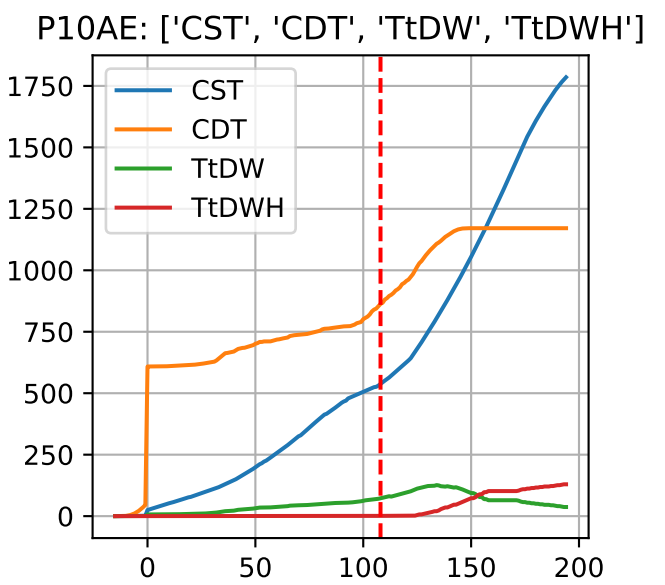
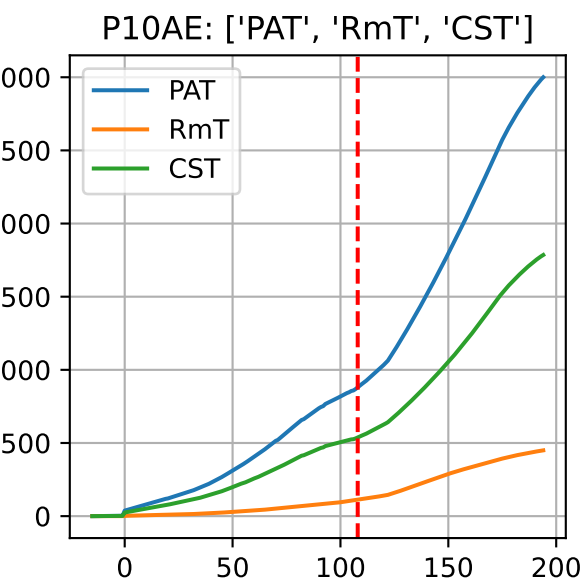
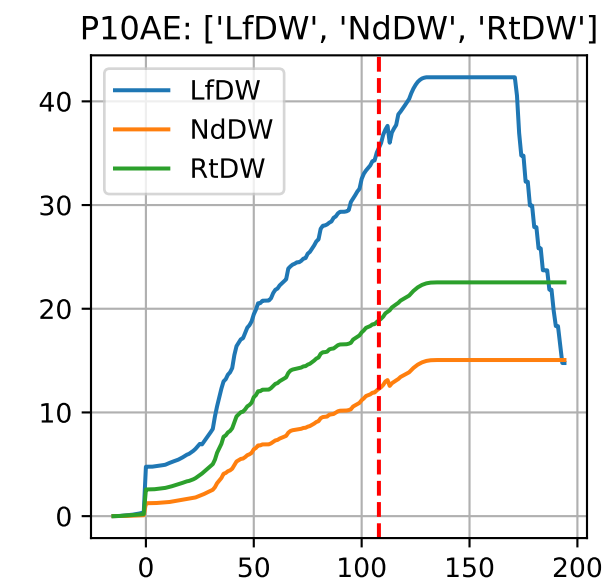
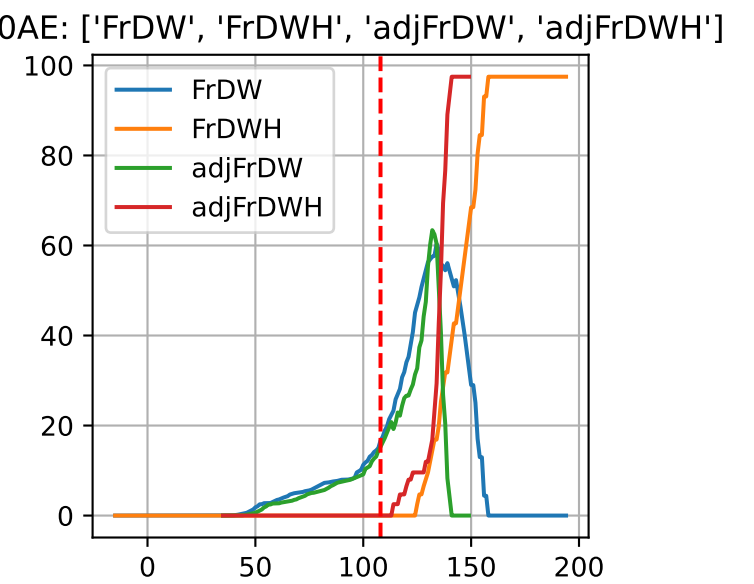
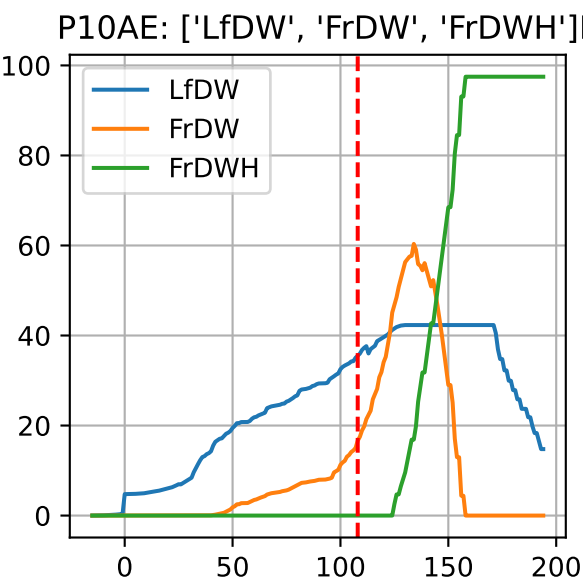
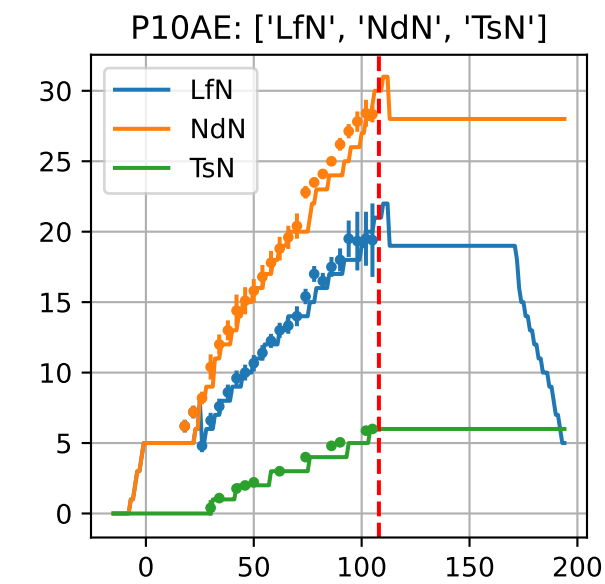
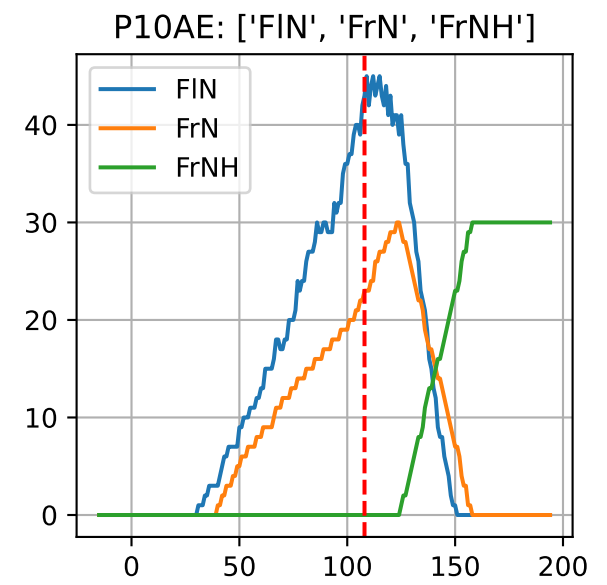
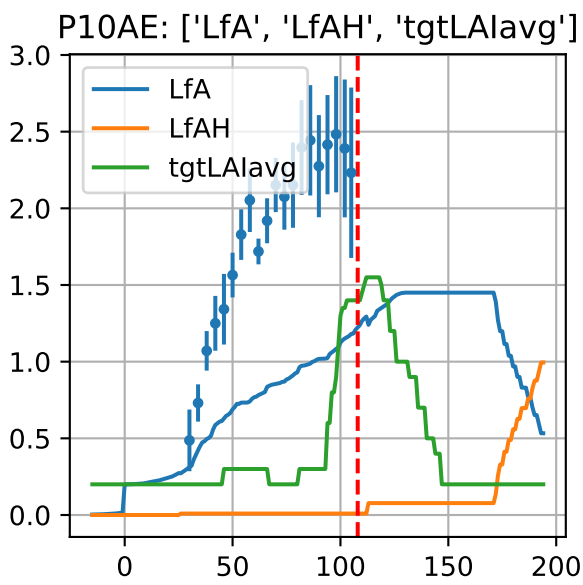
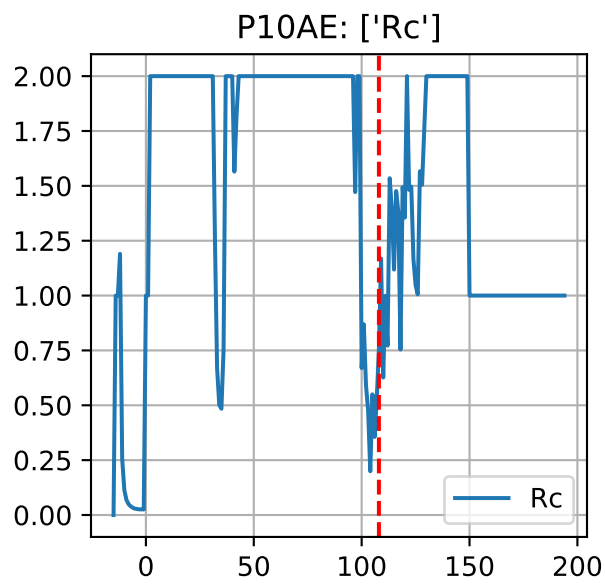
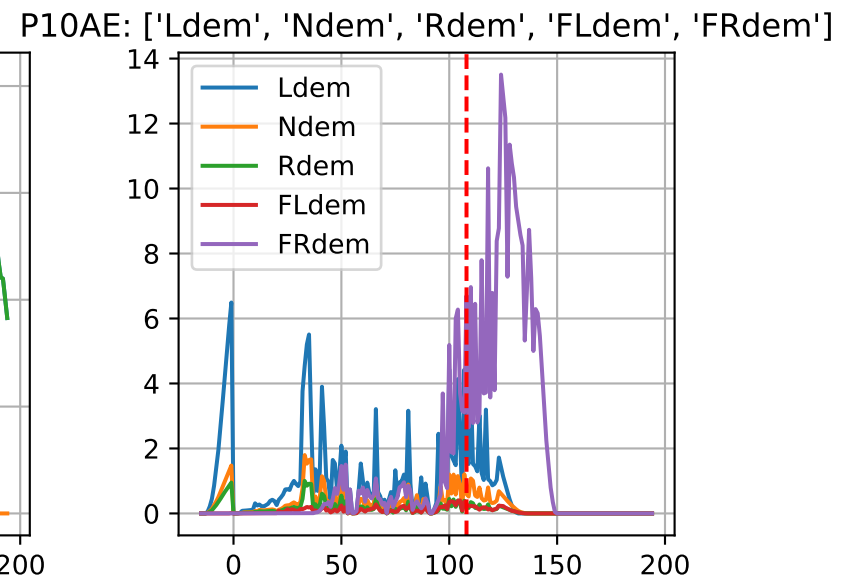
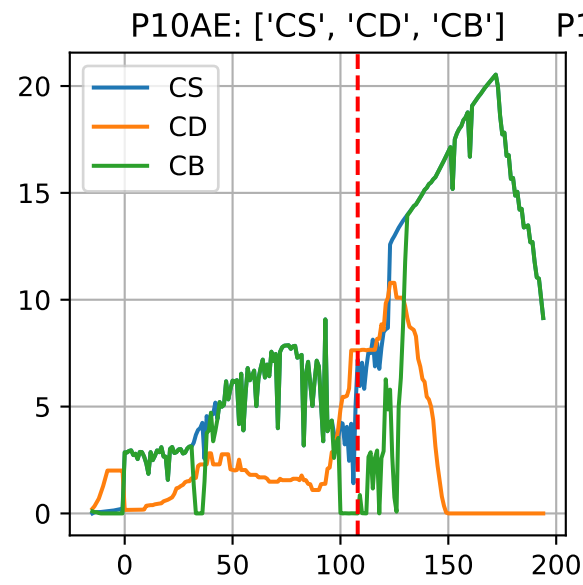
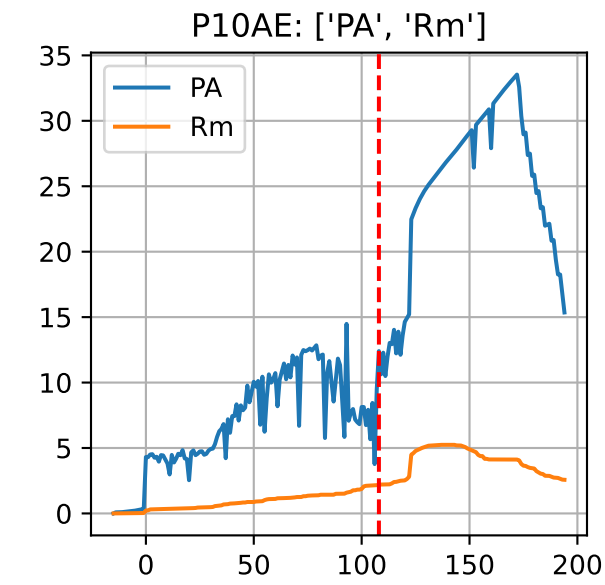
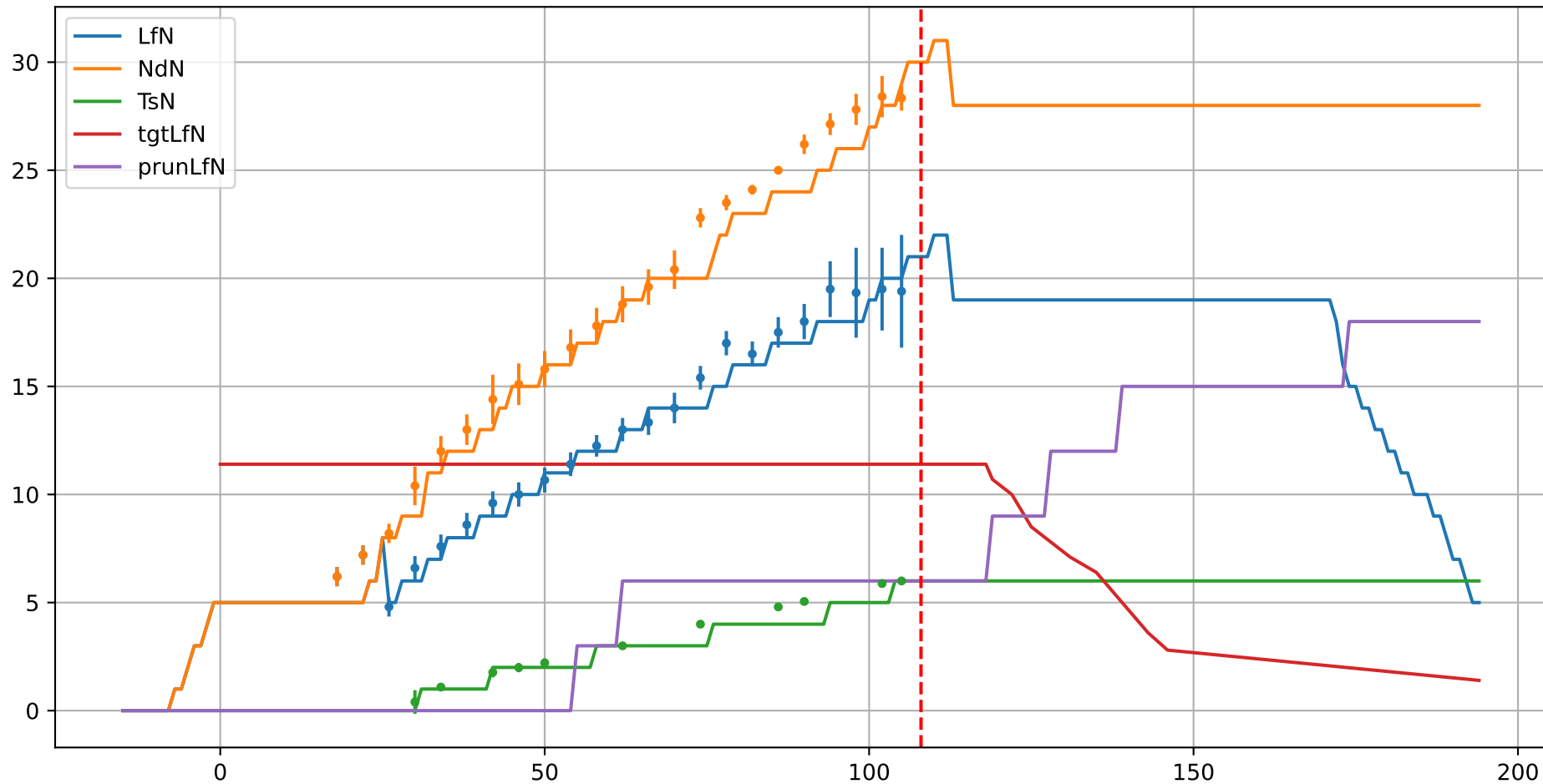


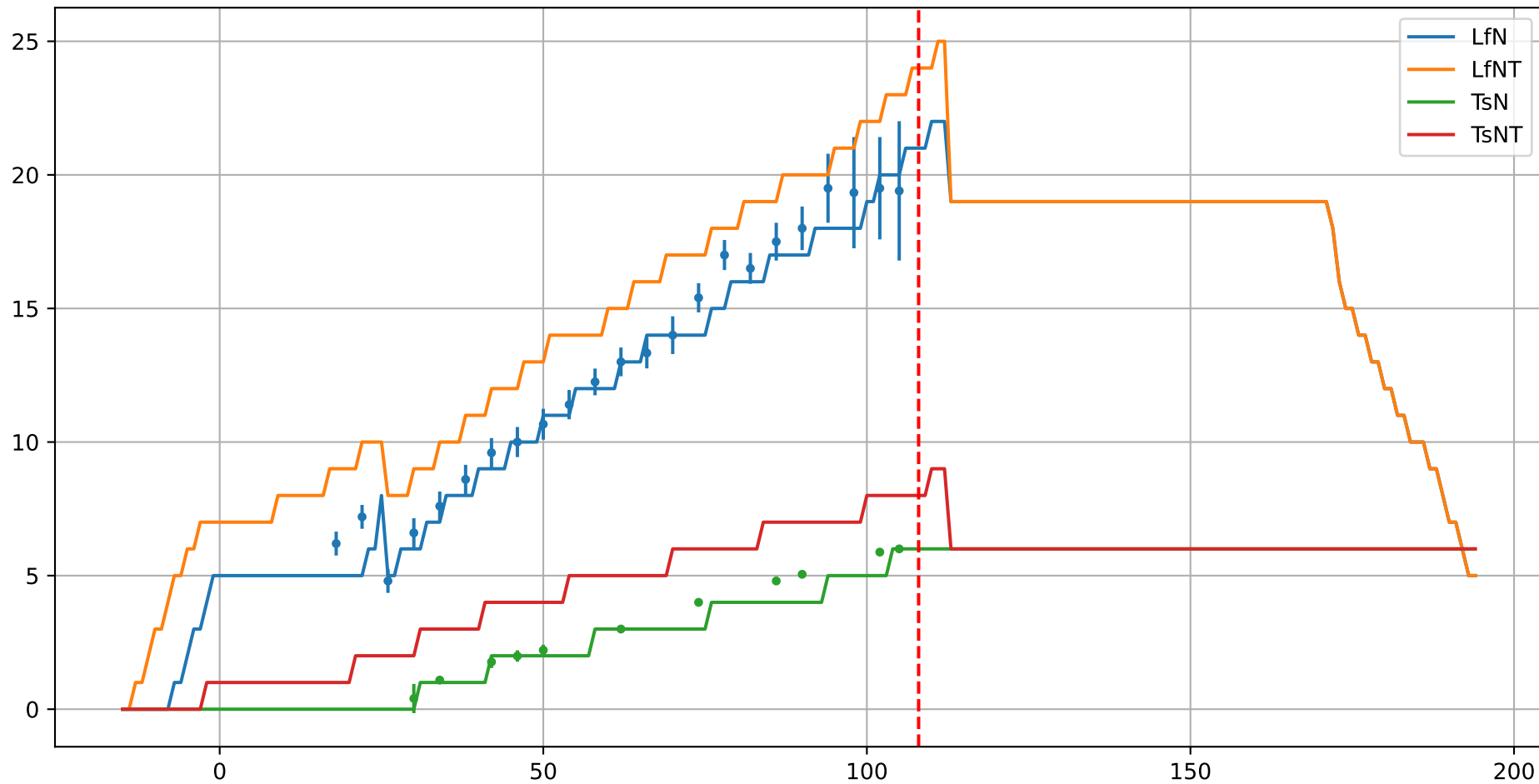
Model Prediction (P10AE)



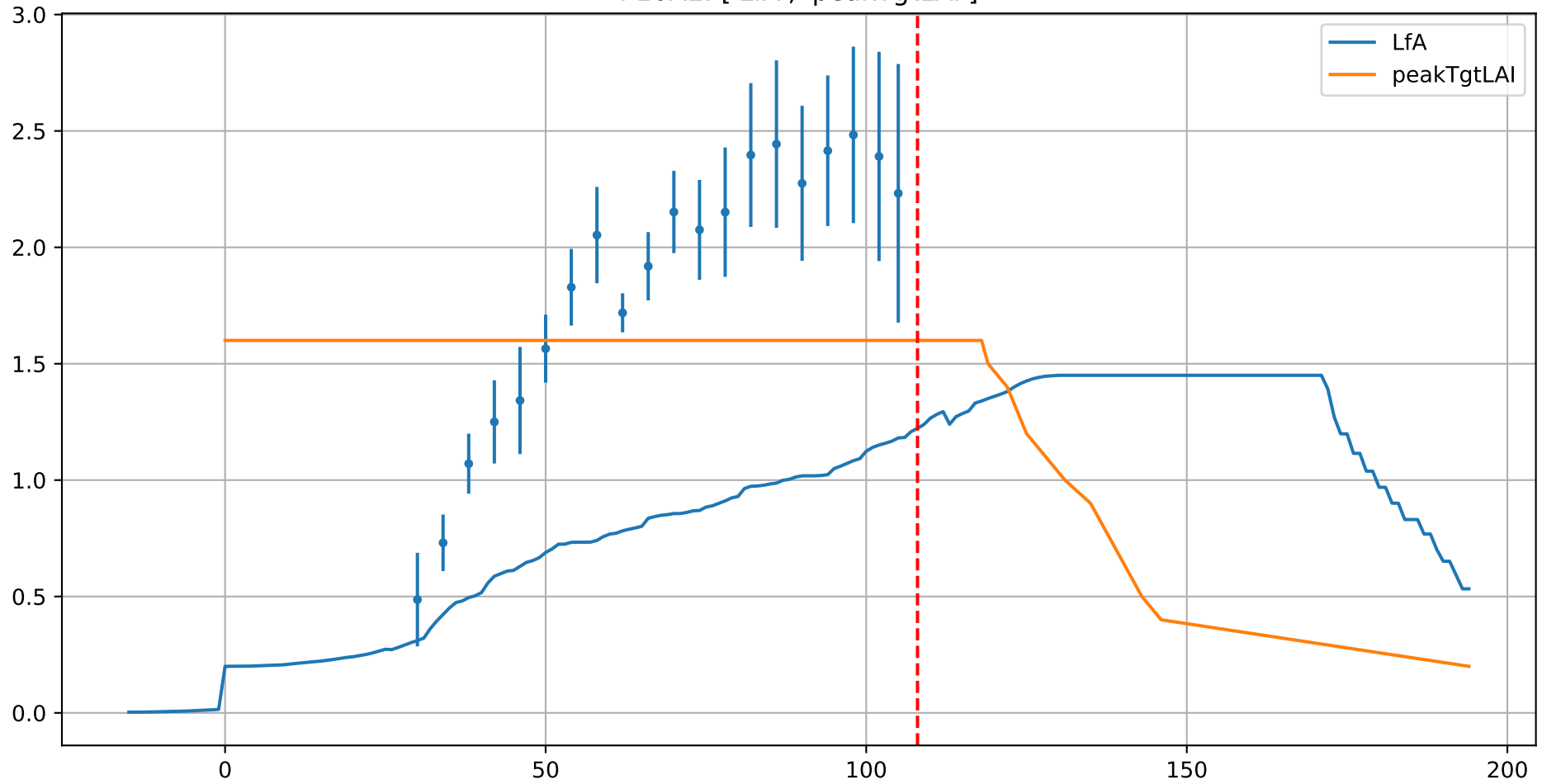
P10AE: ['LfN', 'NdN', 'TsN', 'tgtLfN', 'prunLfN']



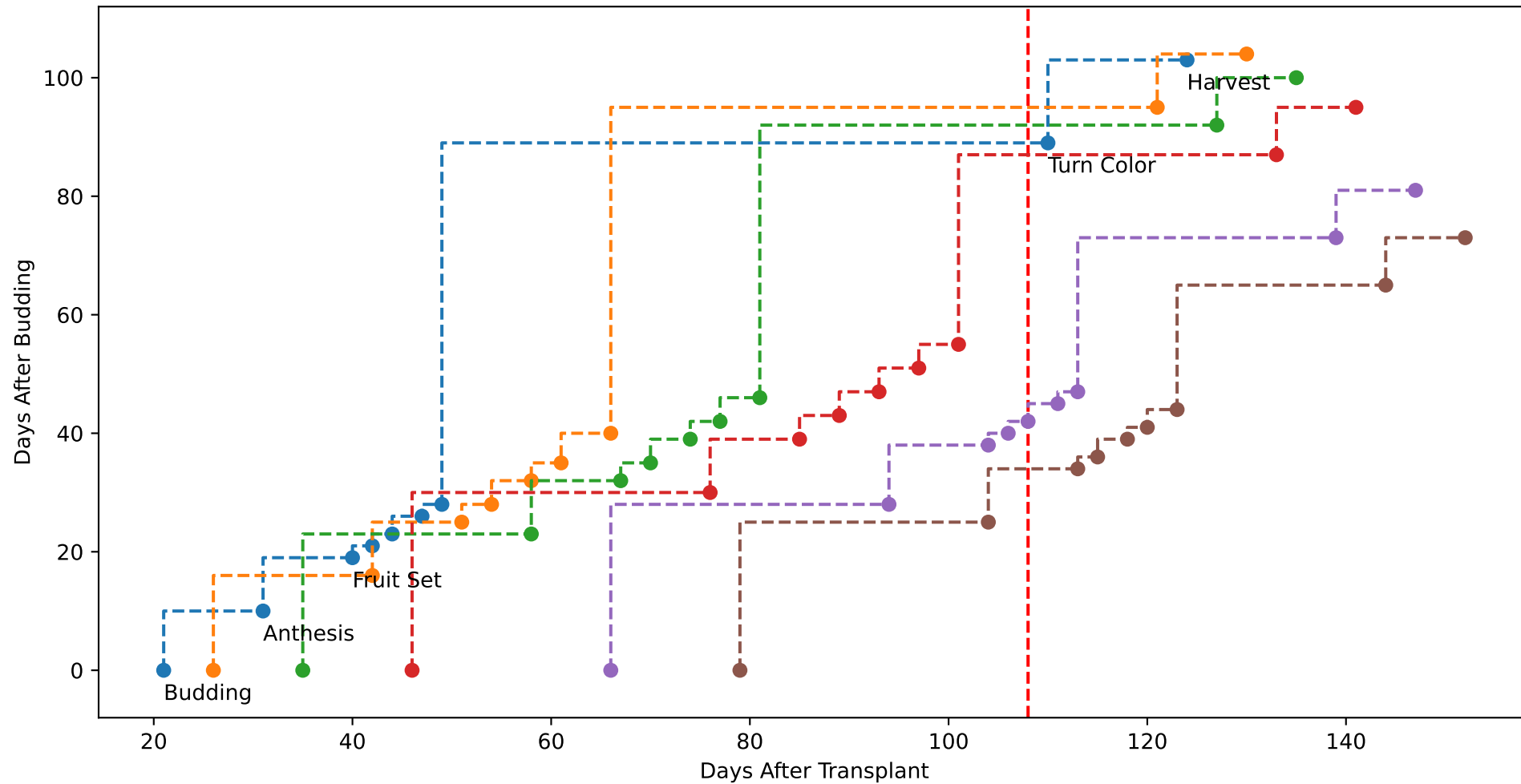
P10AE: ['LfN', 'LfNT', 'TsN', 'TsNT']



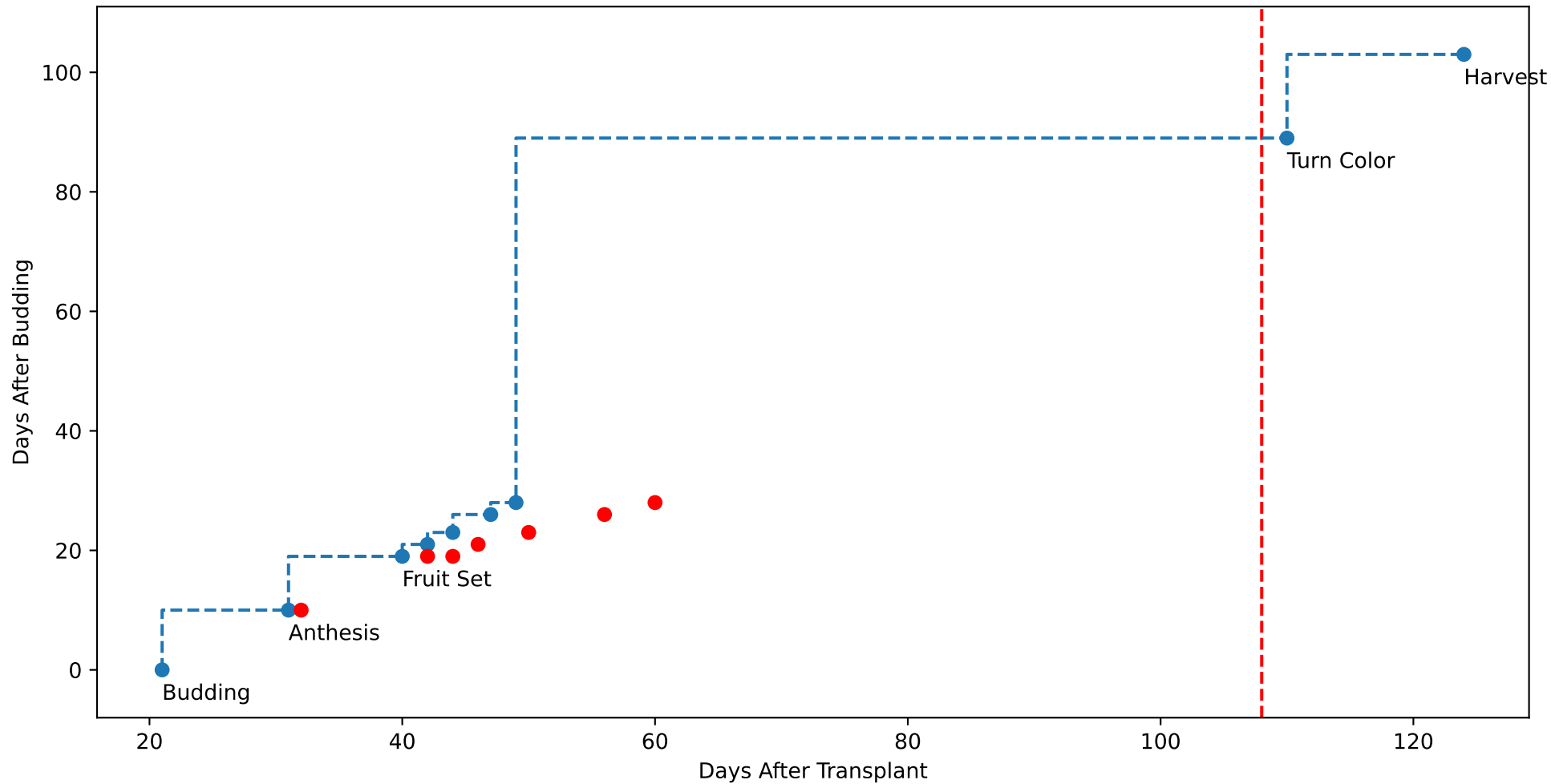
P10AE: ['LfA', 'peakTgtLAI']



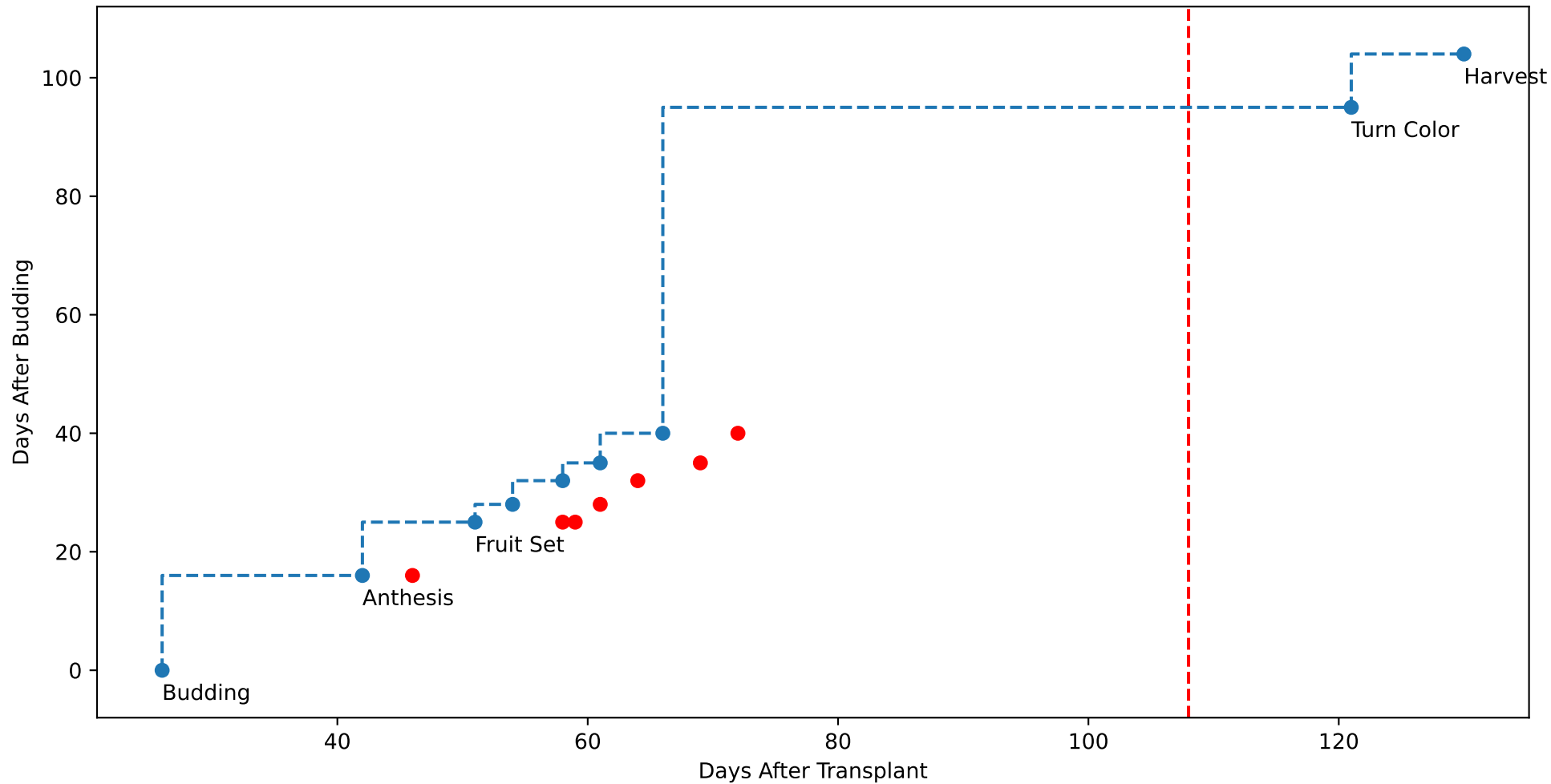
P10AE (plot by DAT)



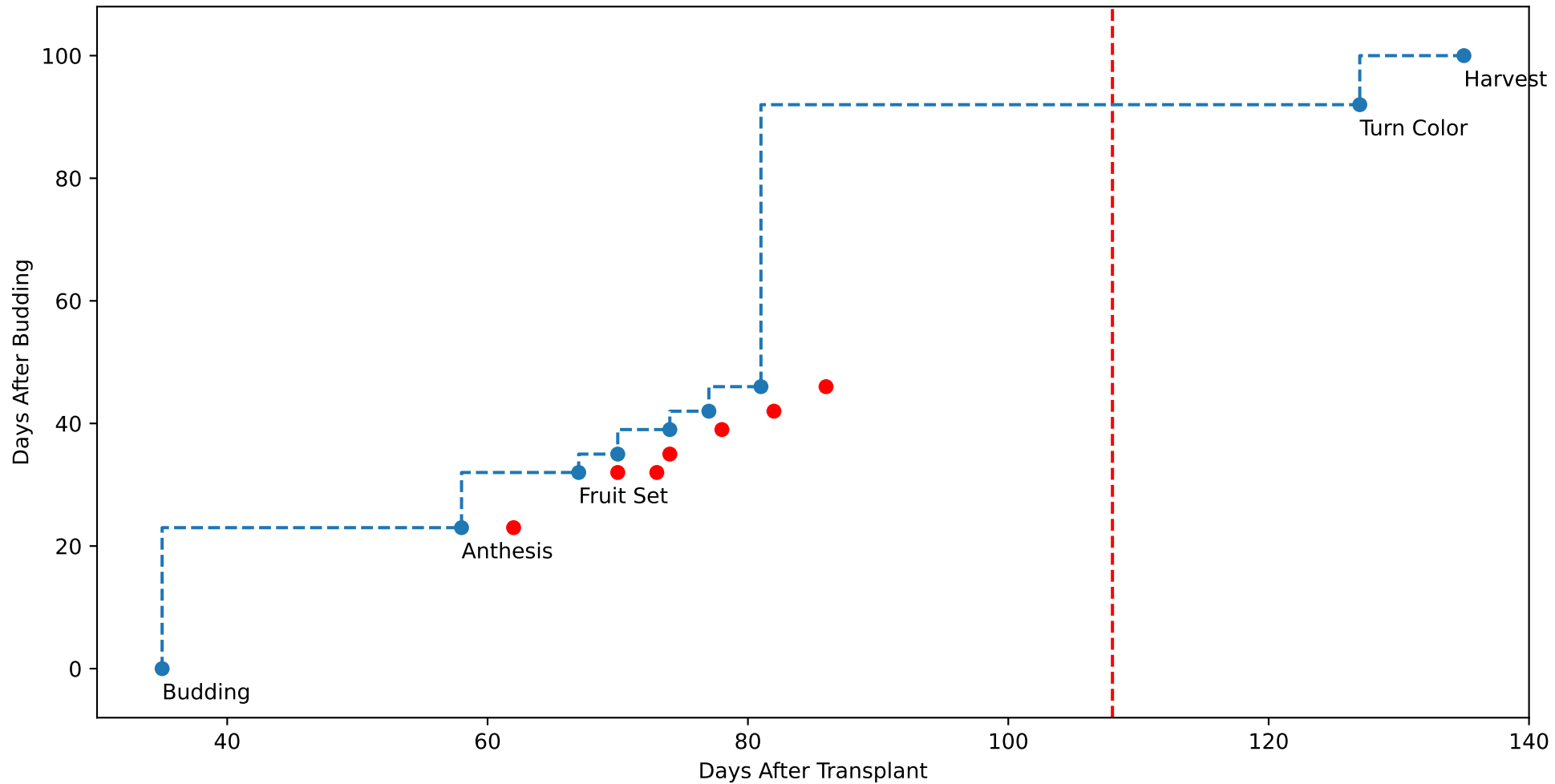
P10AE TsN1 (plot by DAT)



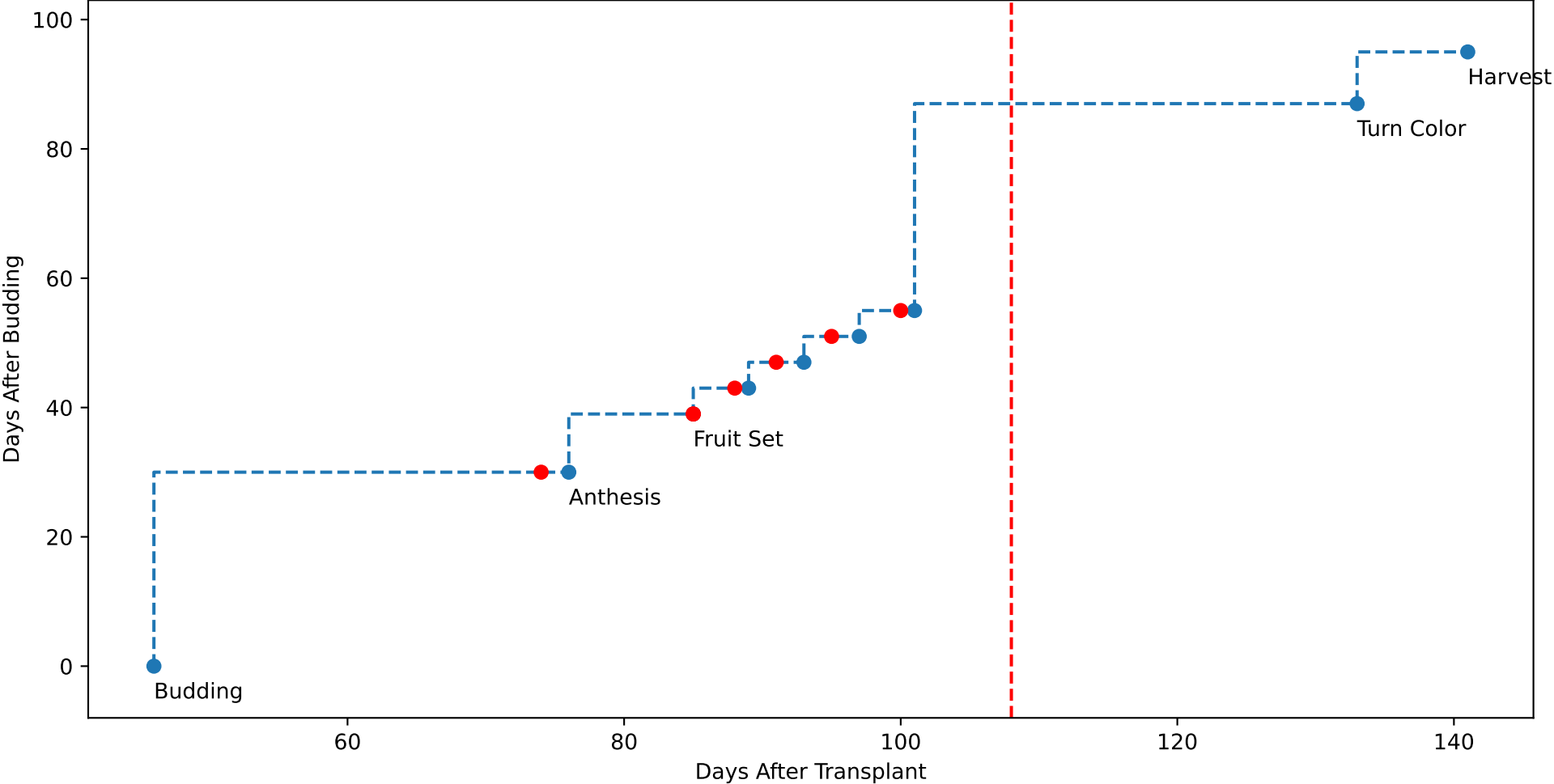
P10AE TsN2 (plot by DAT)



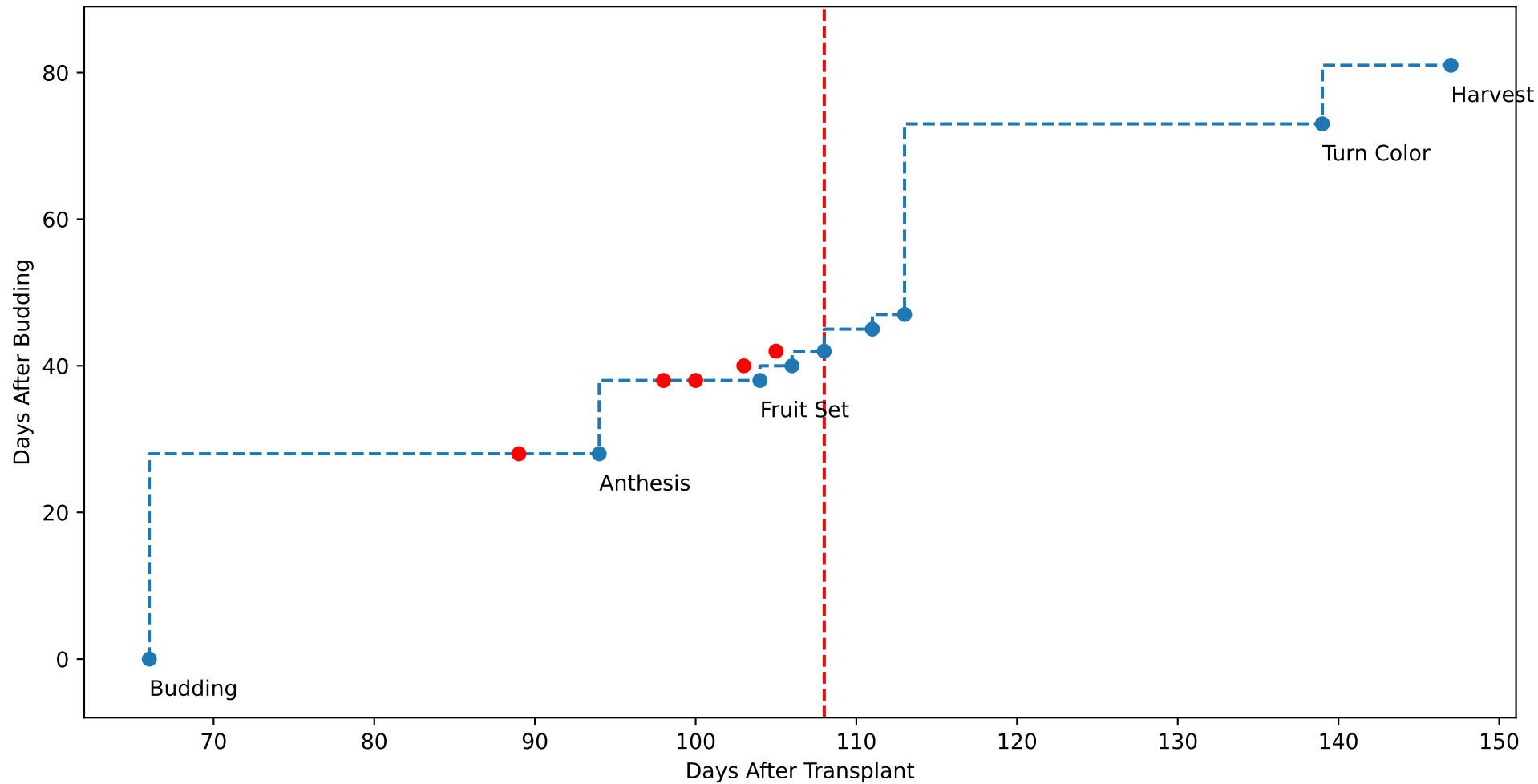
P10AE TsN3 (plot by DAT)



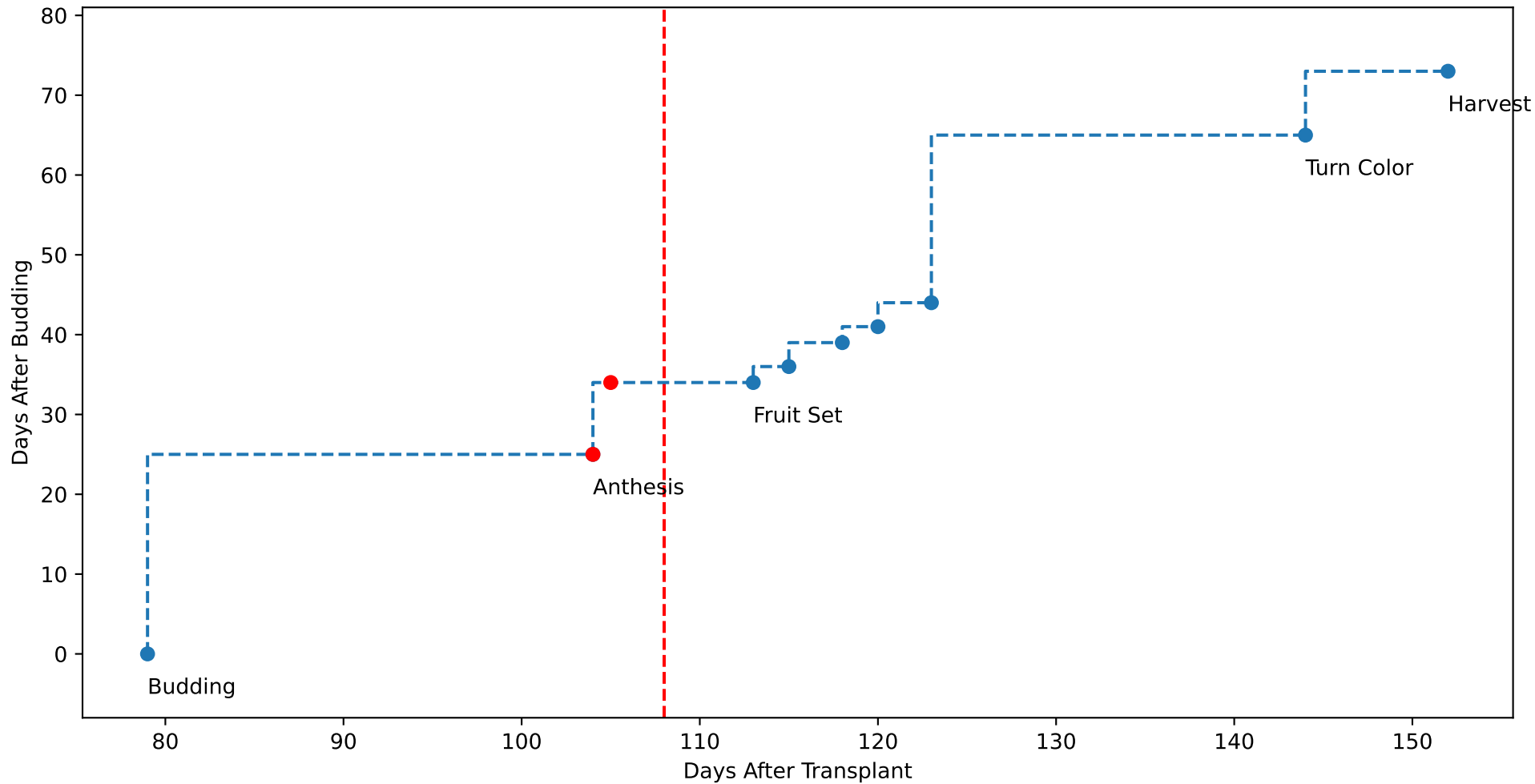
P10AE TsN4 (plot by DAT)



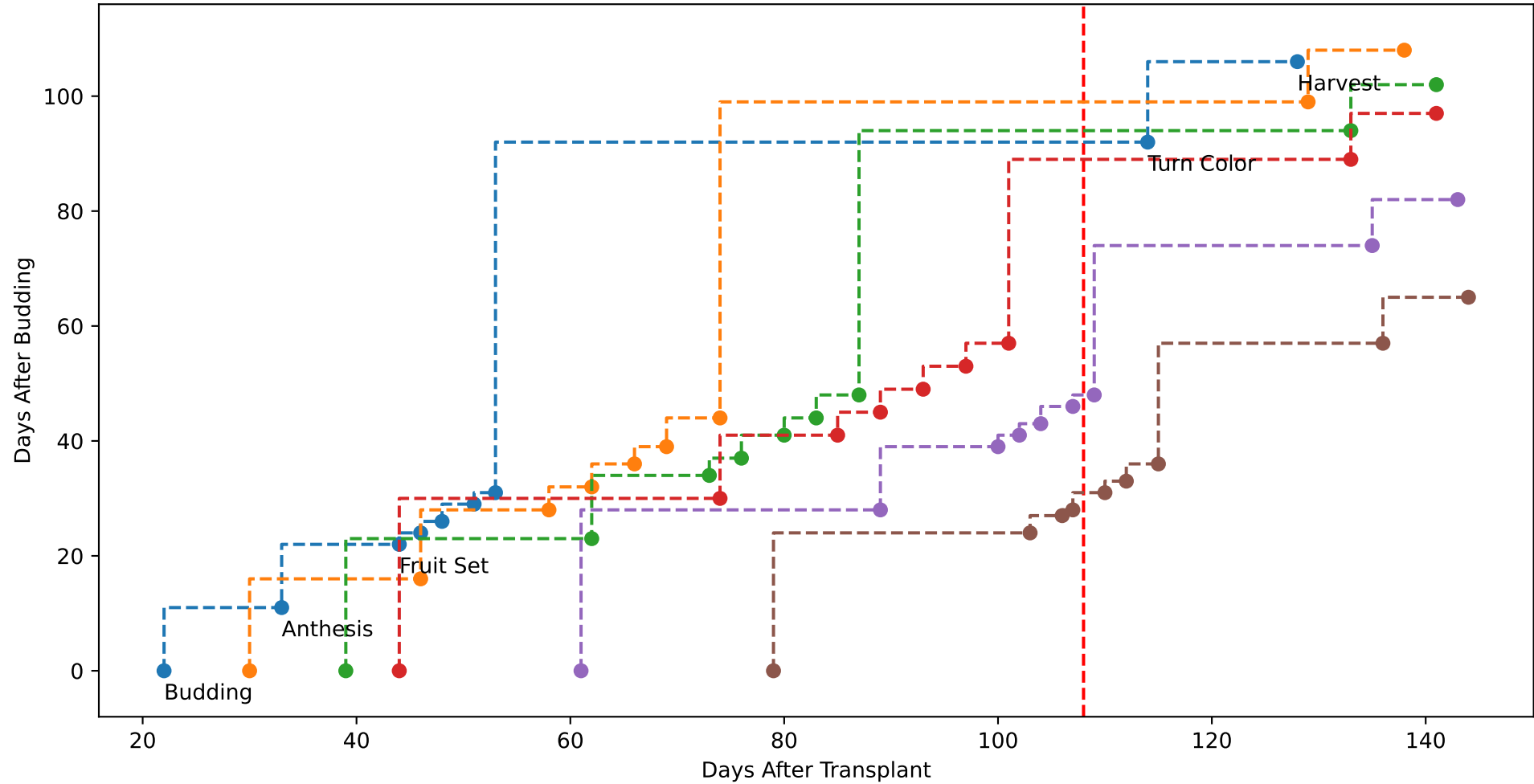
P10AE TsN5 (plot by DAT)



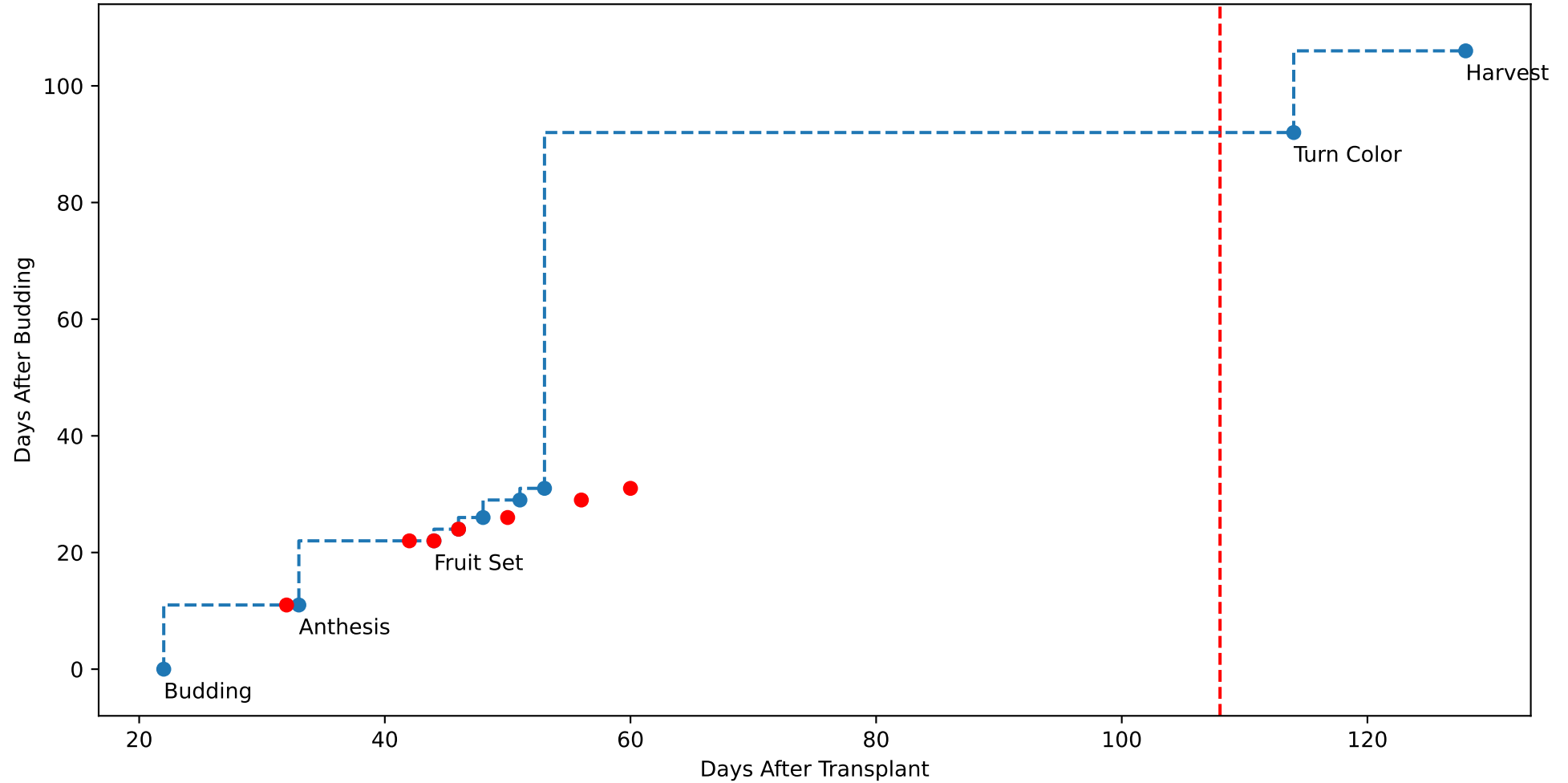
P10AE TsN6 (plot by DAT)



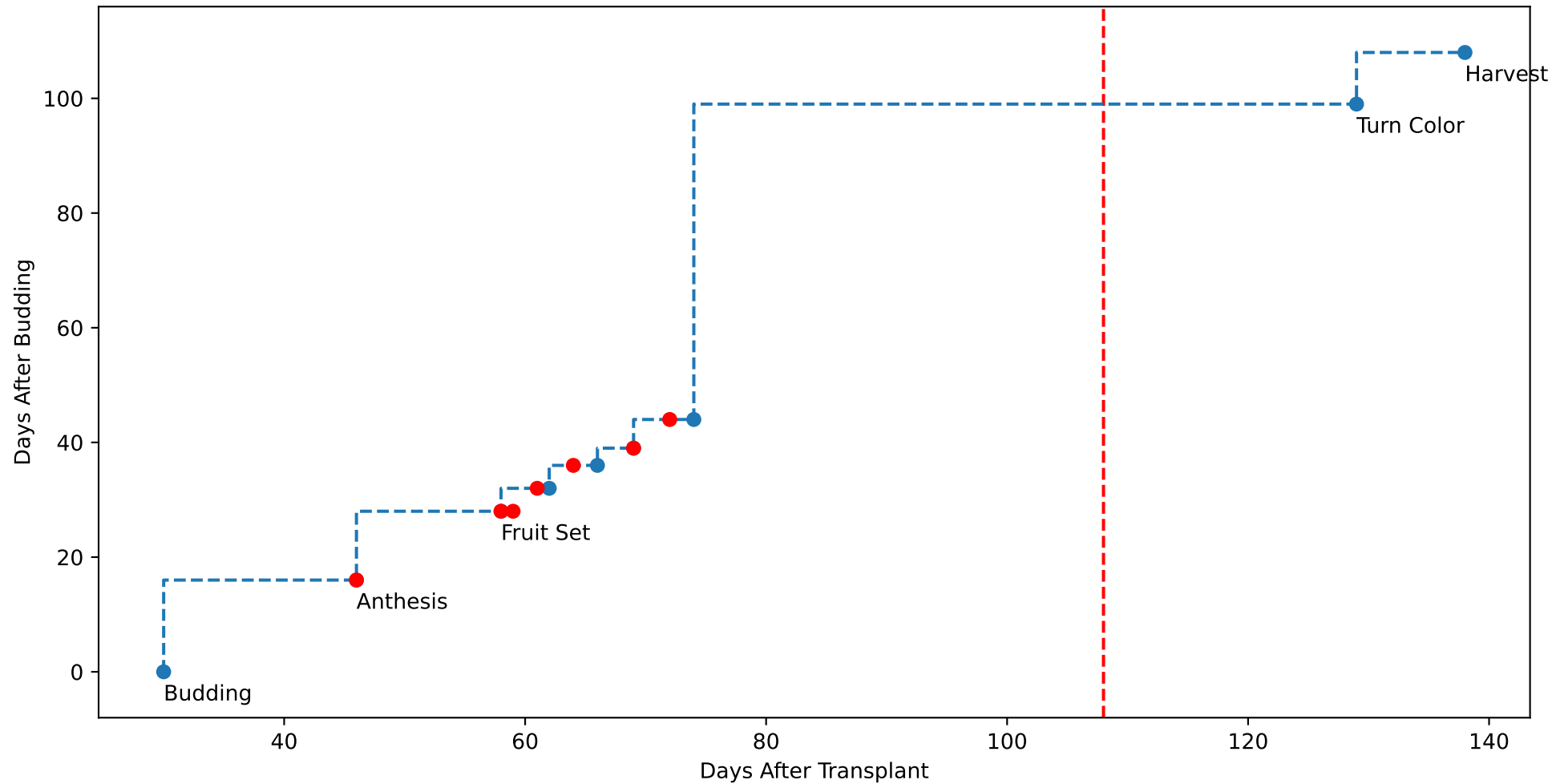
P10AE (plot by adjDAT)



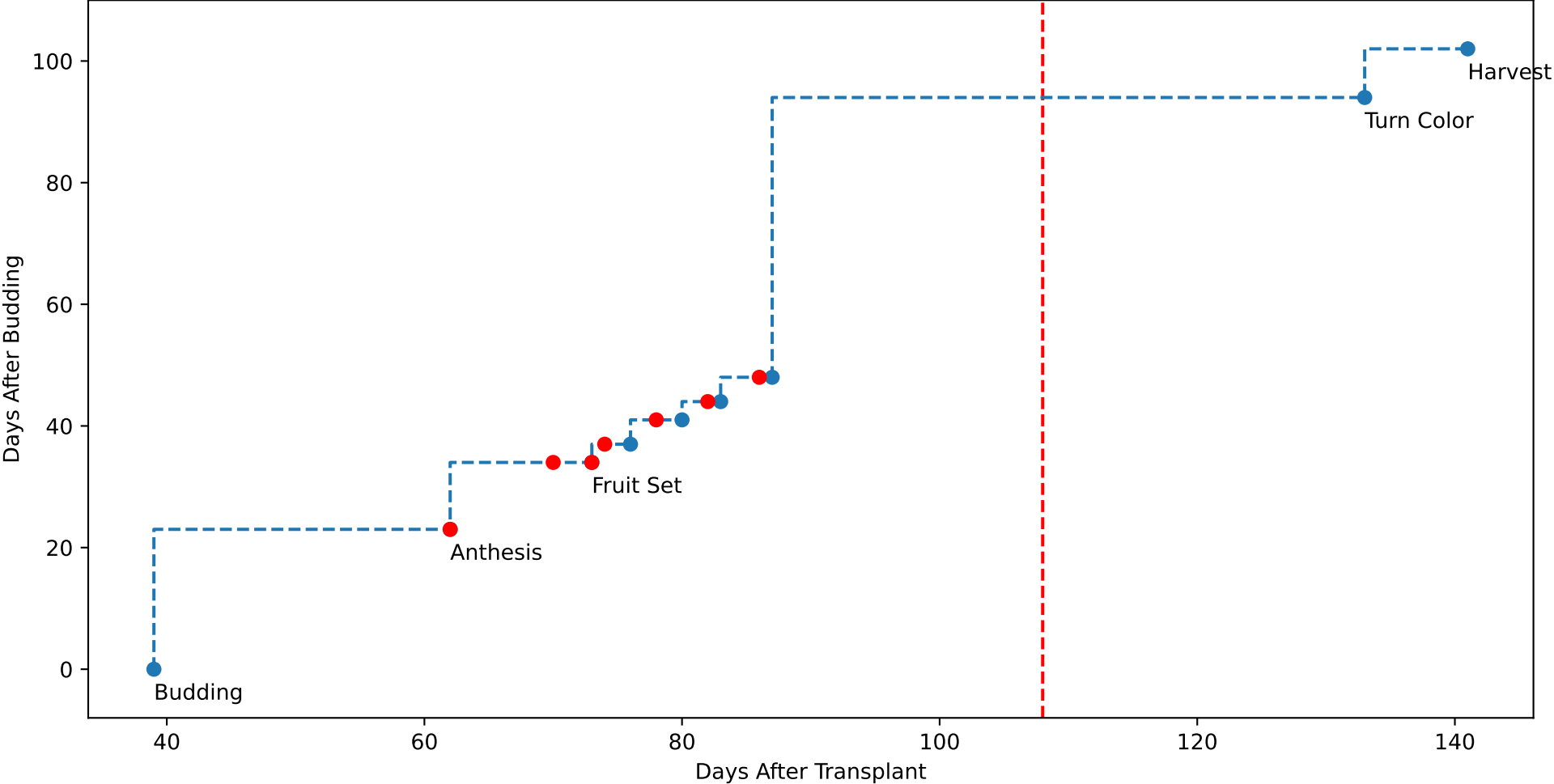
P10AE TsN1 (plot by adjDAT)



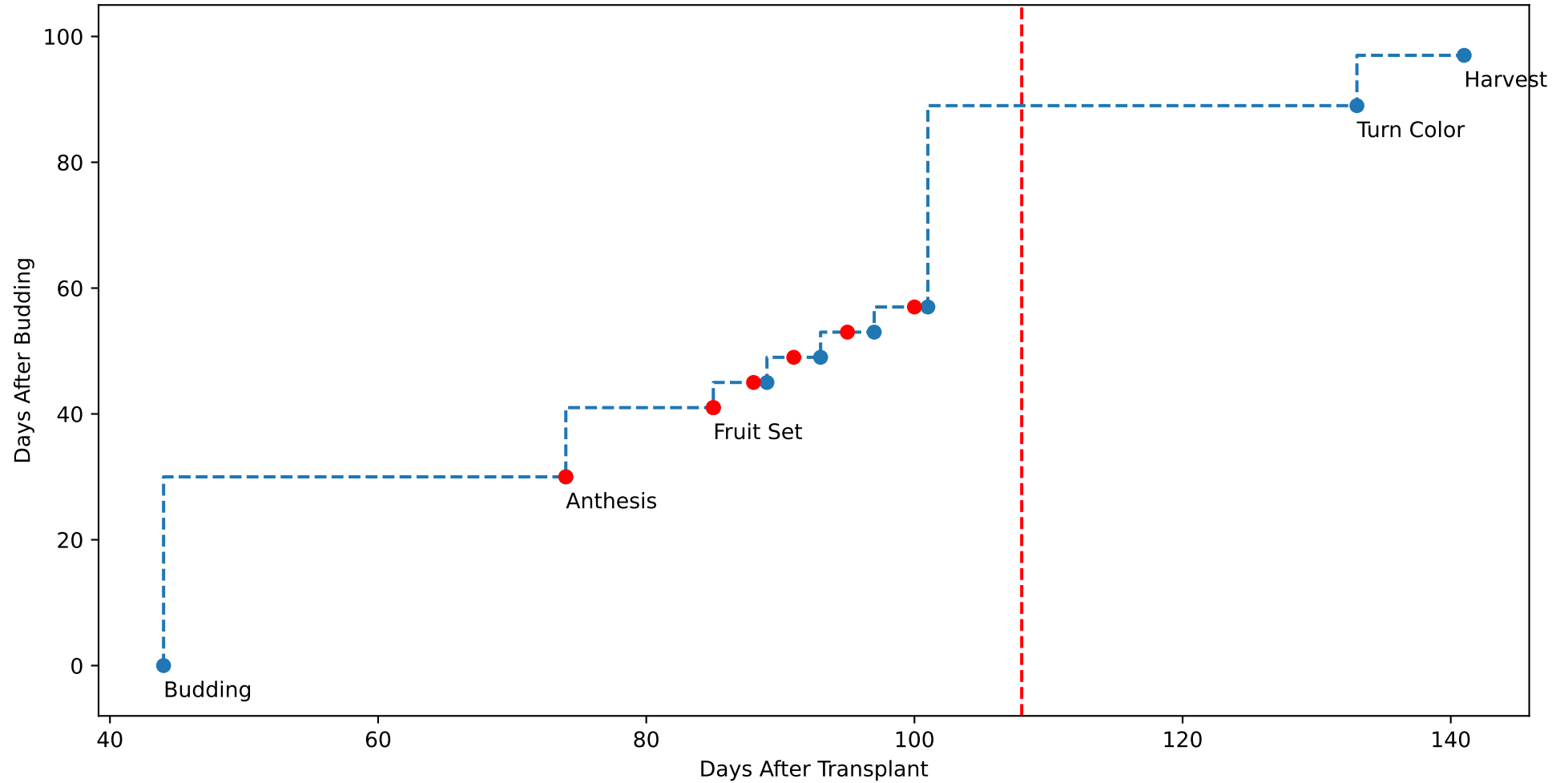
P10AE TsN2 (plot by adjDAT)



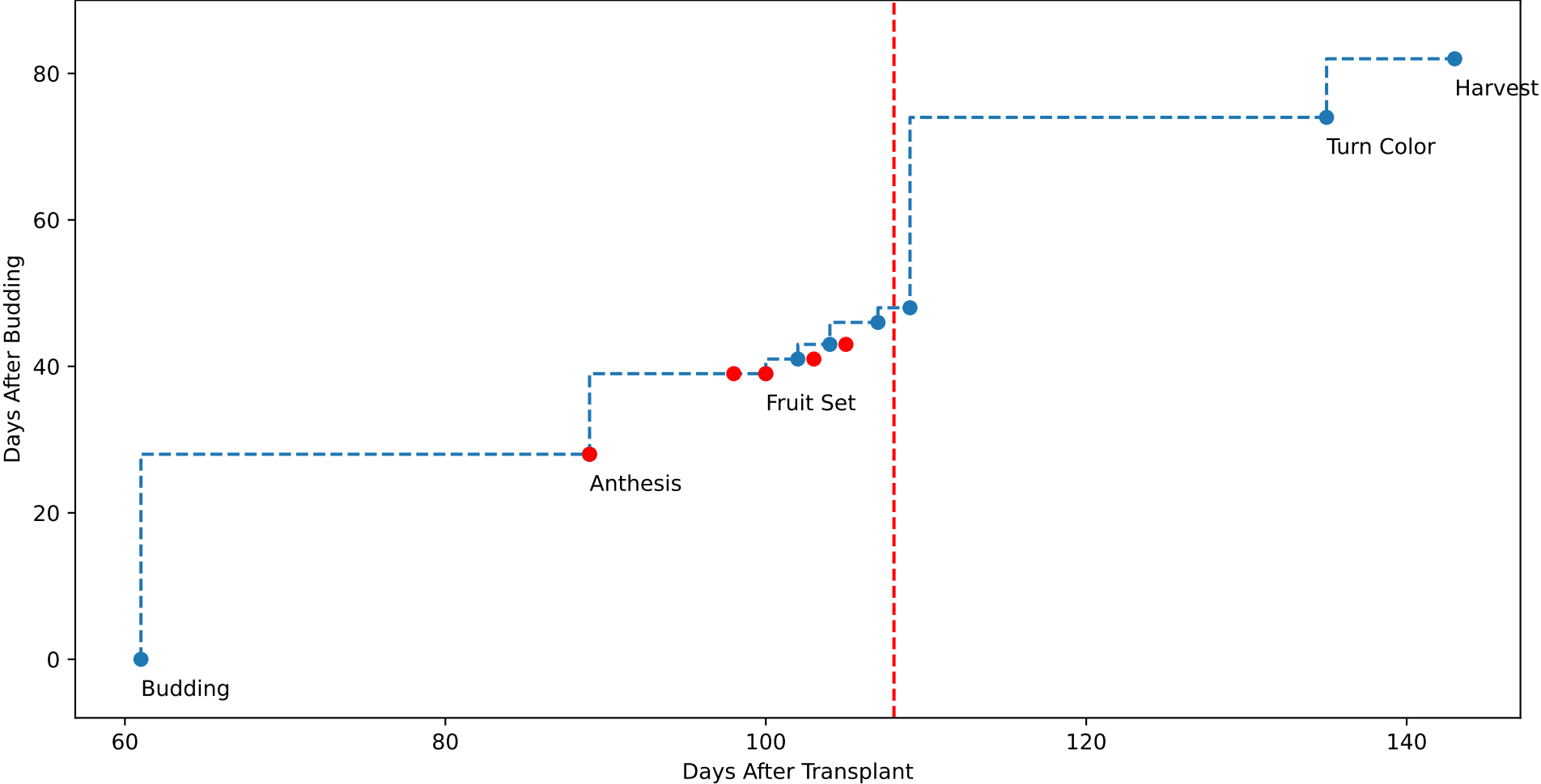
P10AE TsN3 (plot by adjDAT)



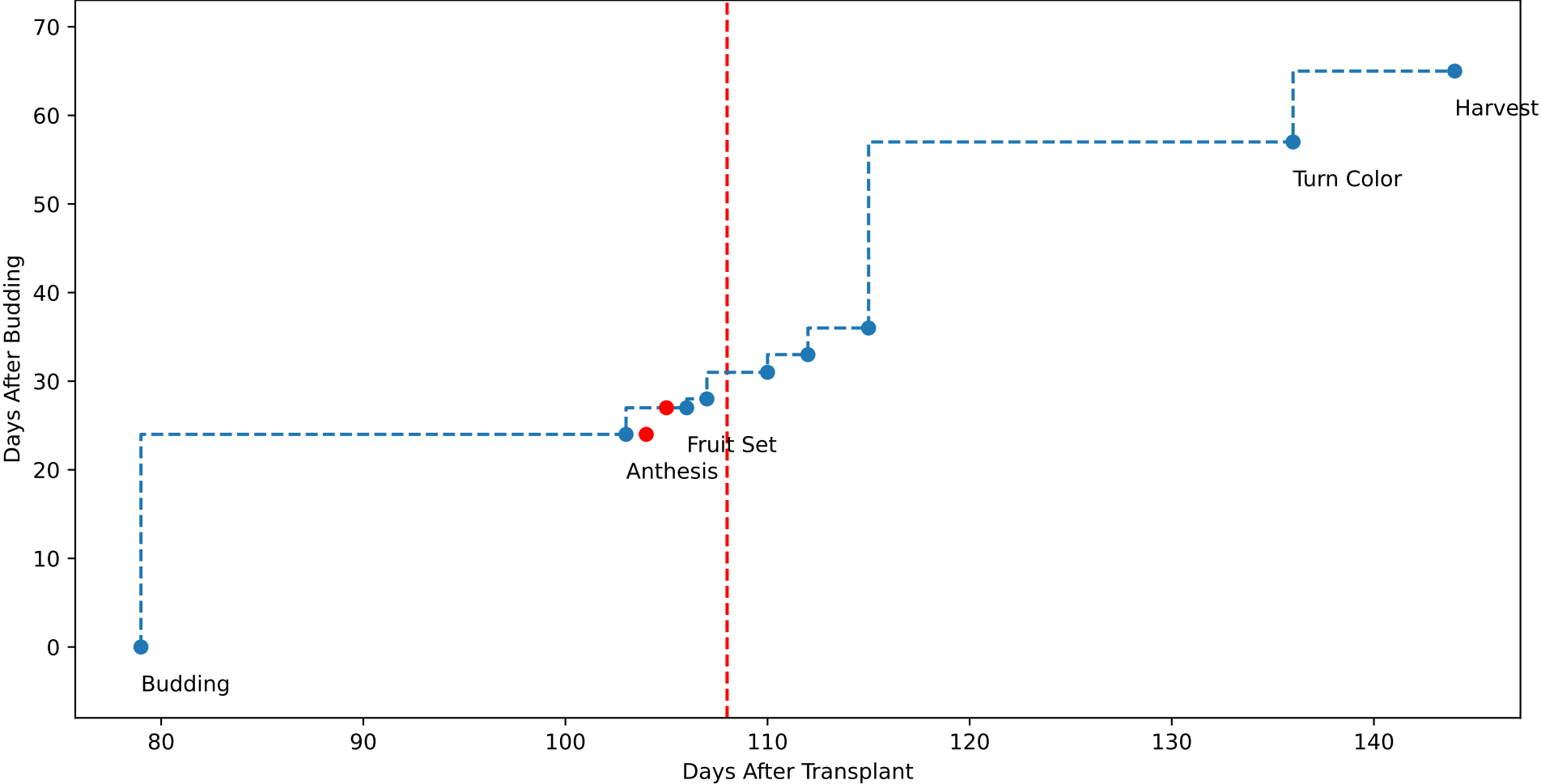
P10AE TsN4 (plot by adjDAT)

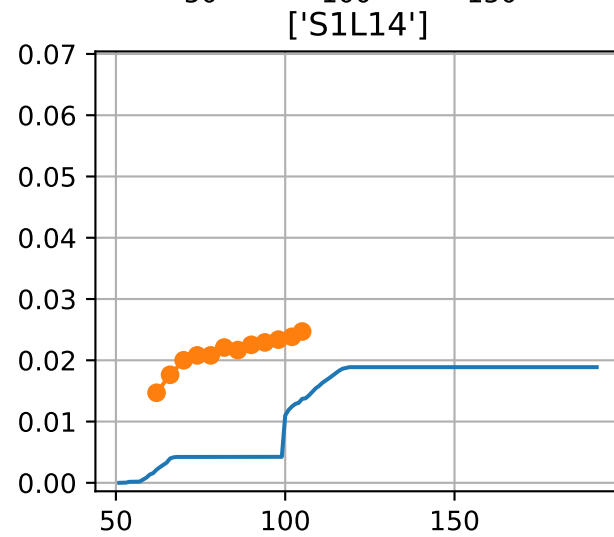
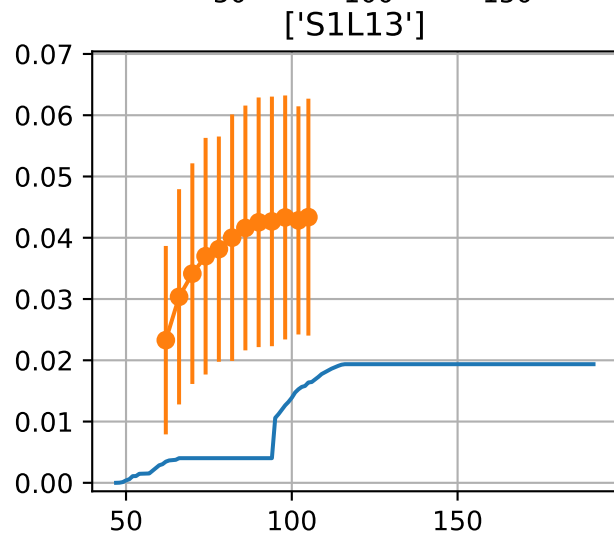
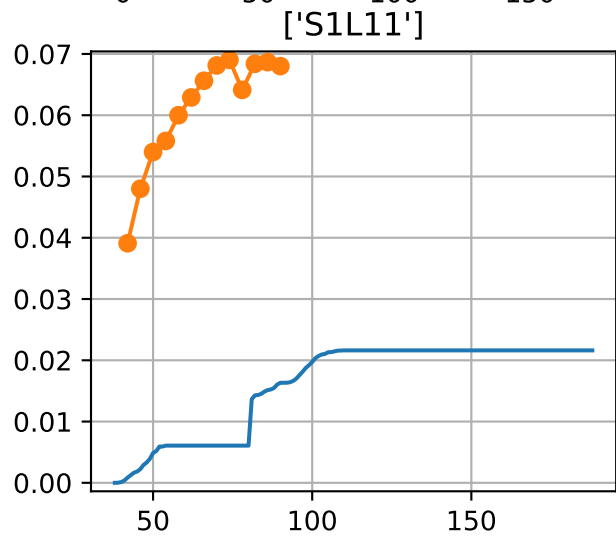
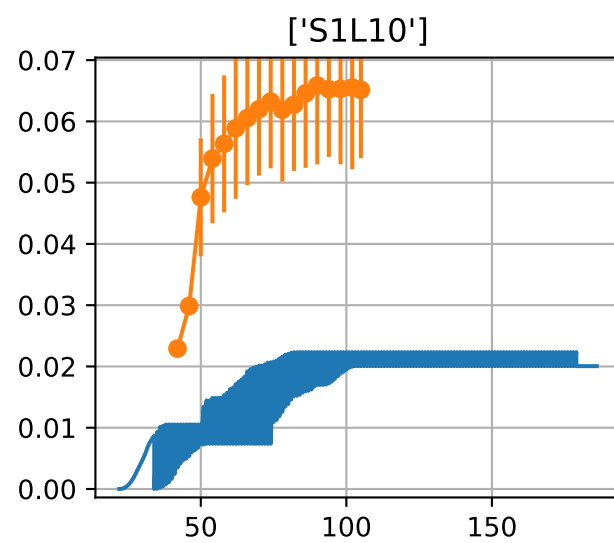
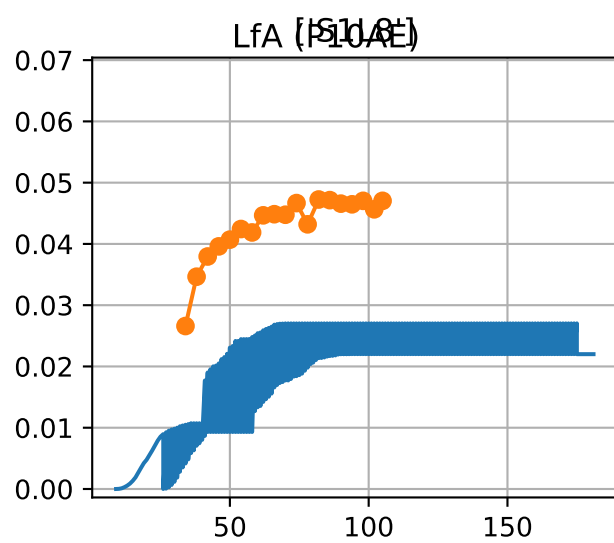
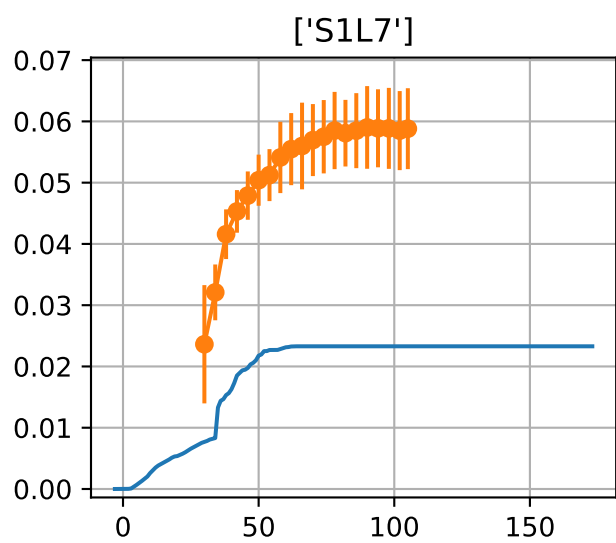


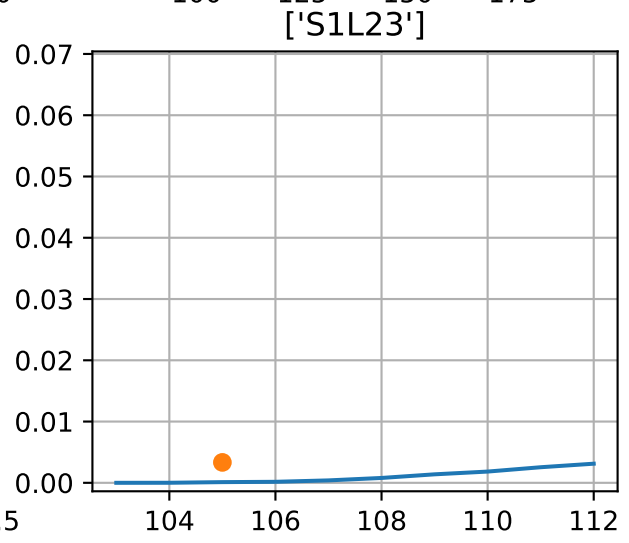
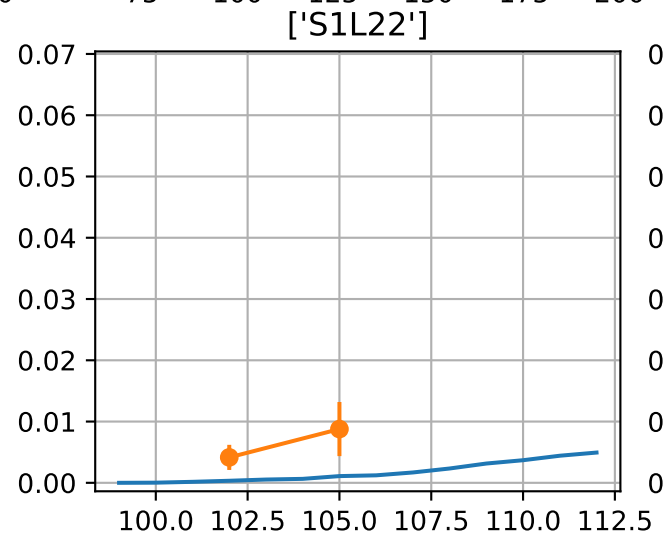
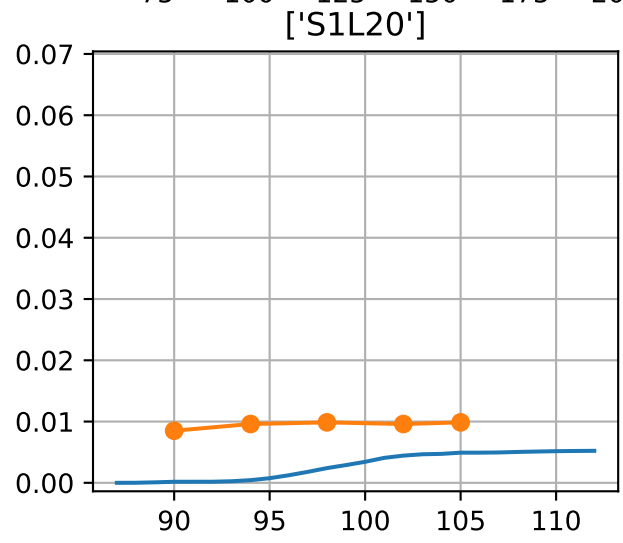
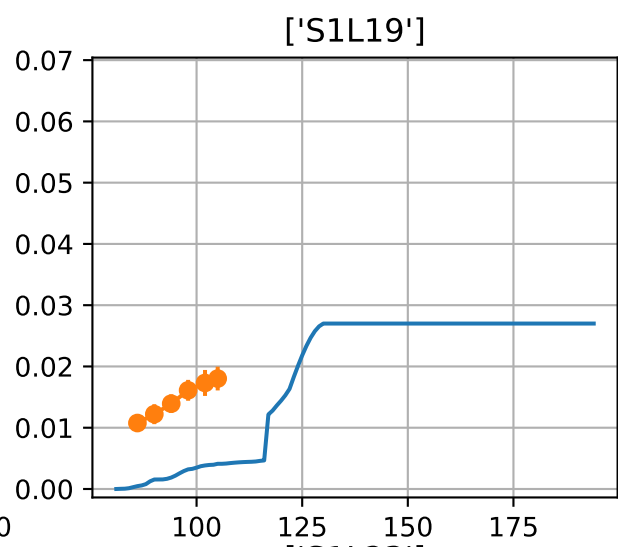
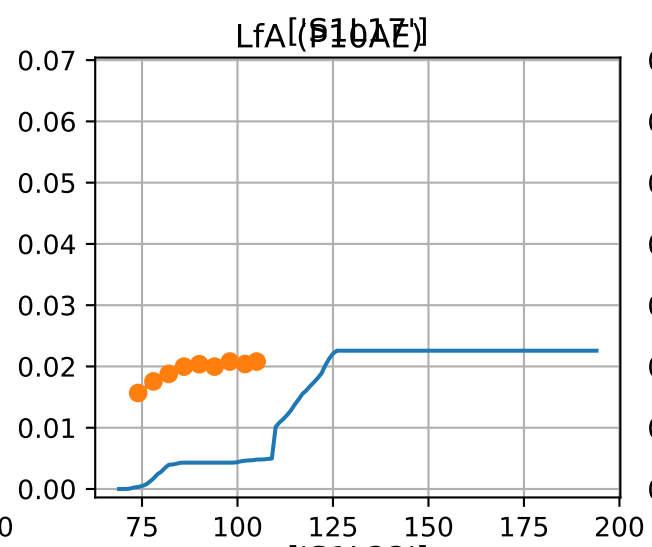
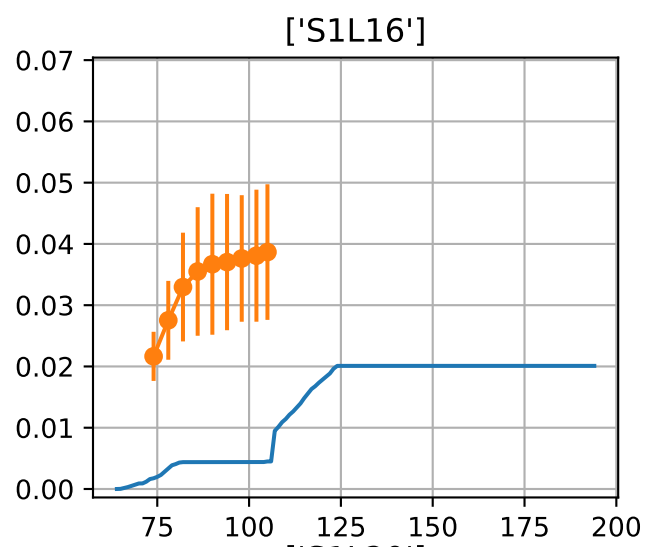
P10AE TsN5 (plot by adjDAT)

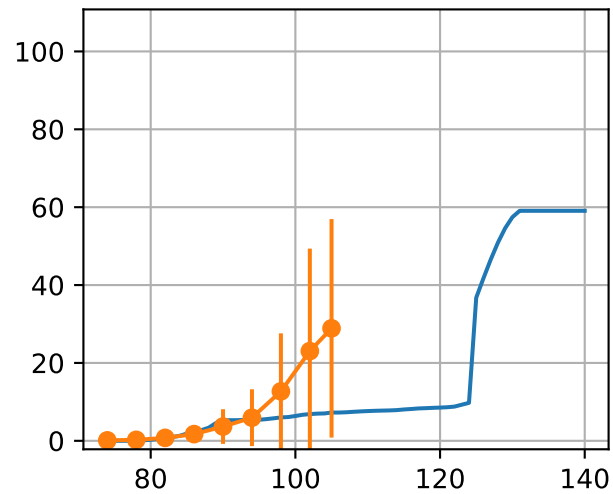
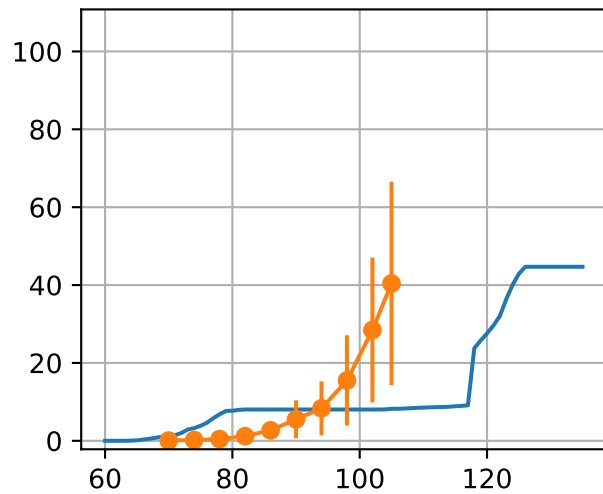
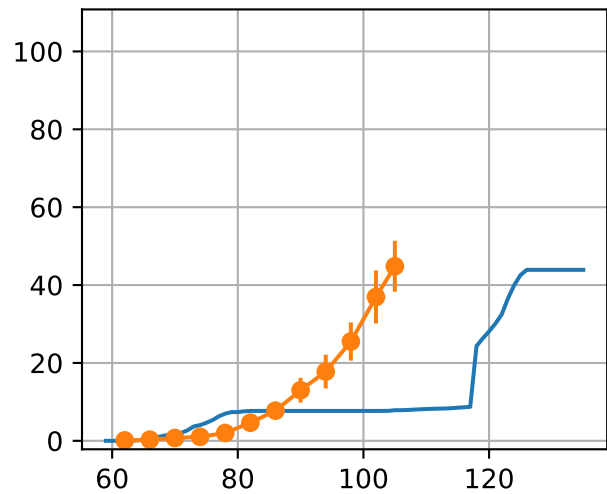
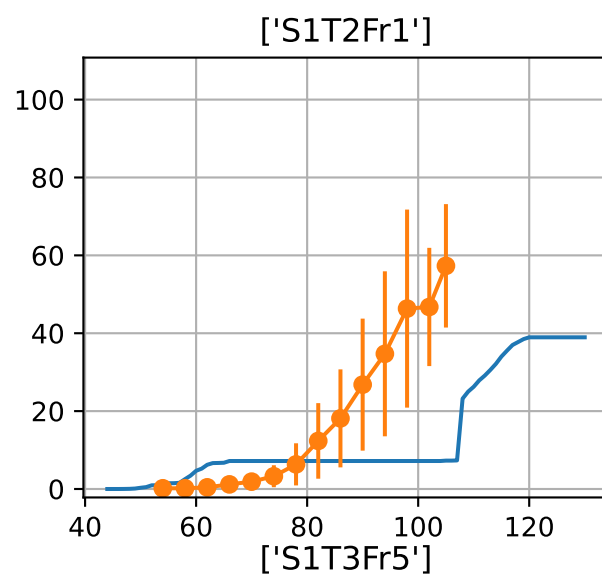
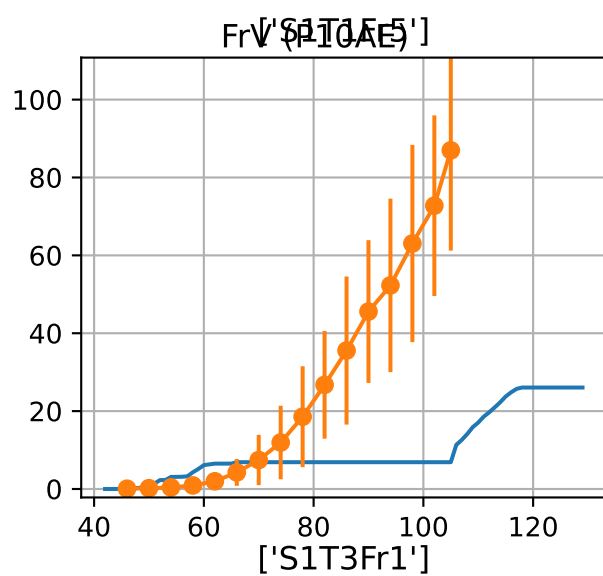
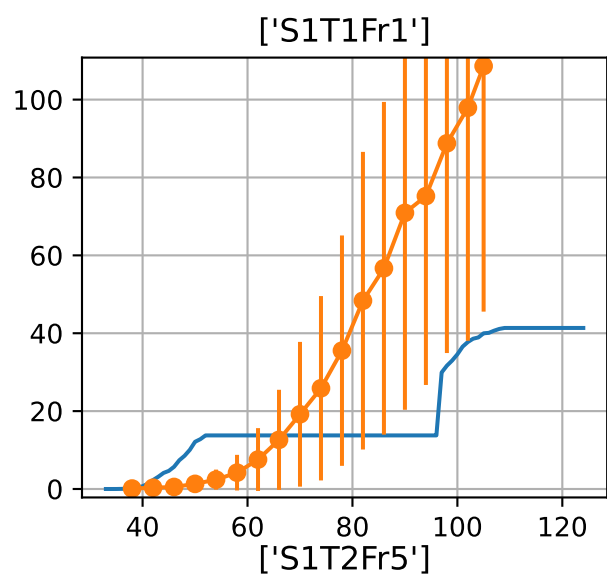


P10AE TsN6 (plot by adjDAT)

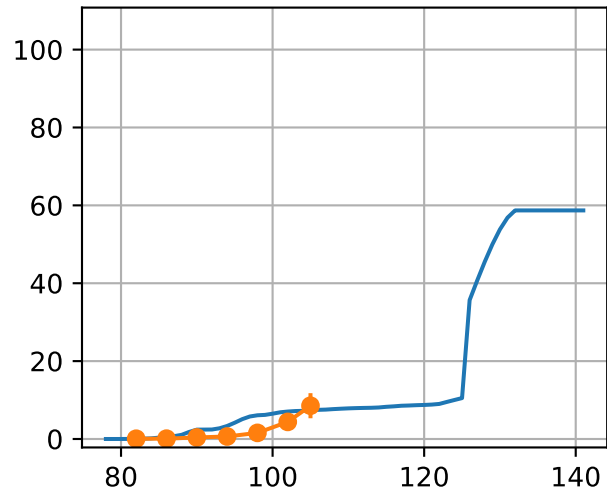




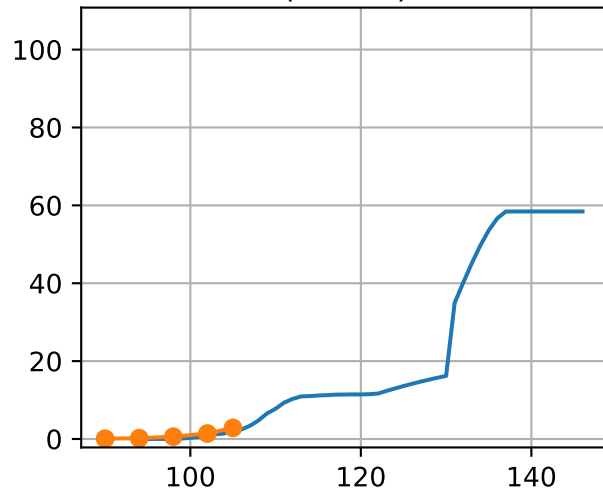




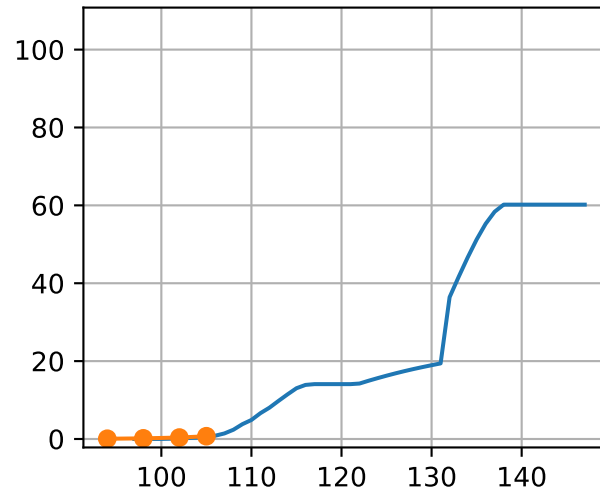
['S1T4Fr1']



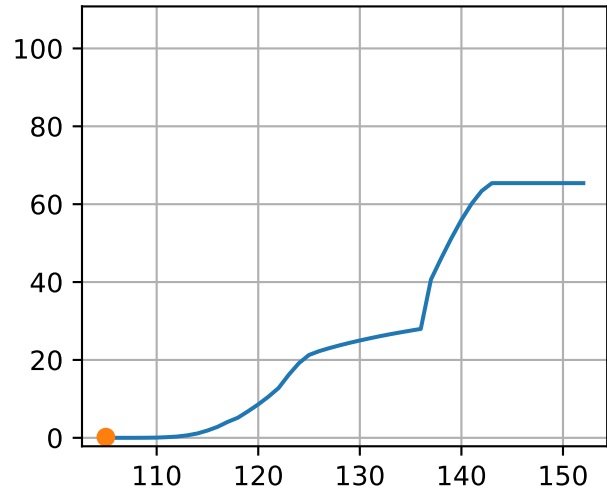
FrV (Å)



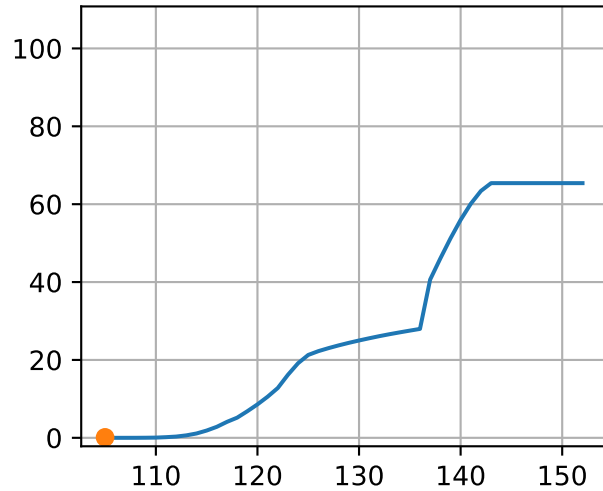
['S1T5Fr1']



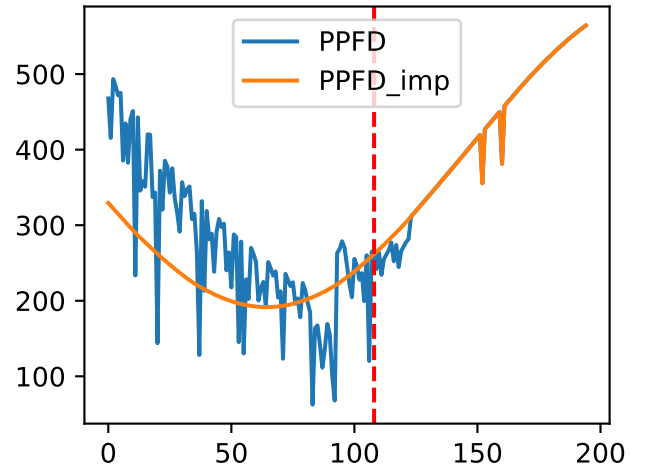
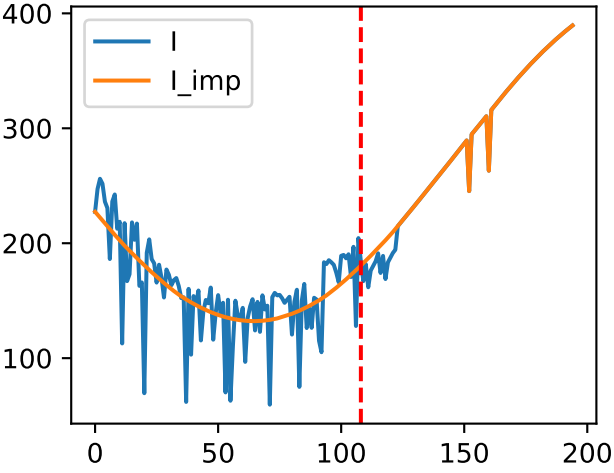
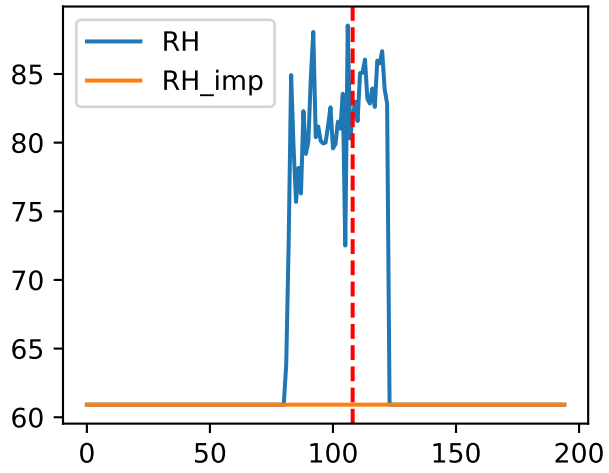
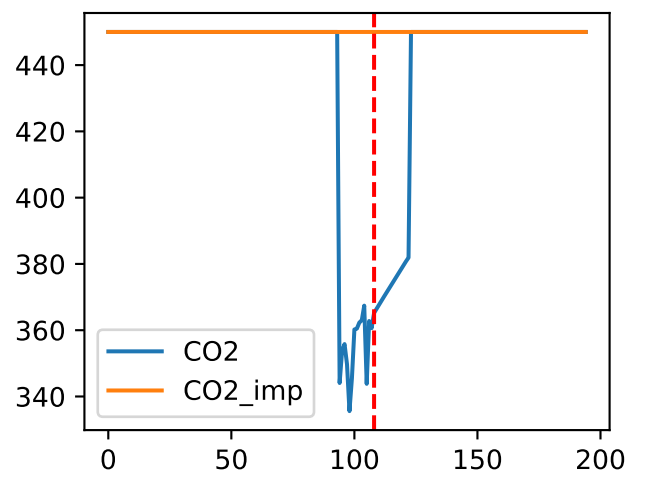
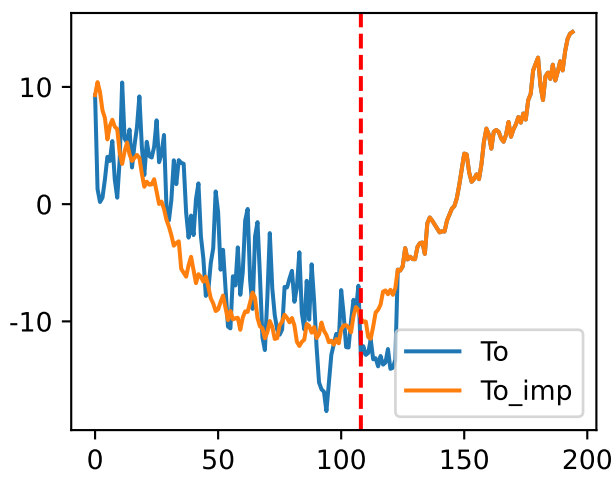
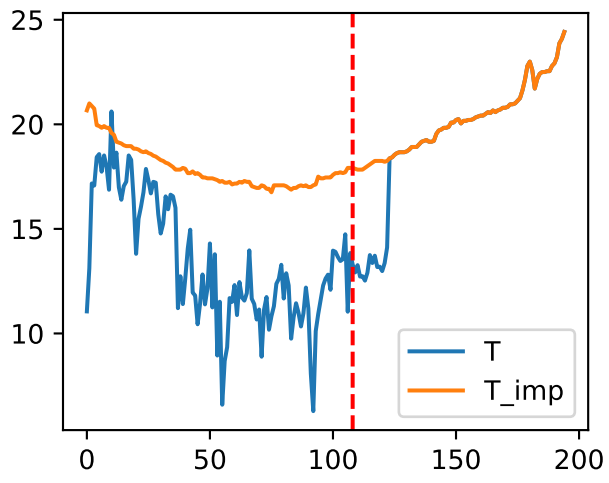
['S1T5Fr5']



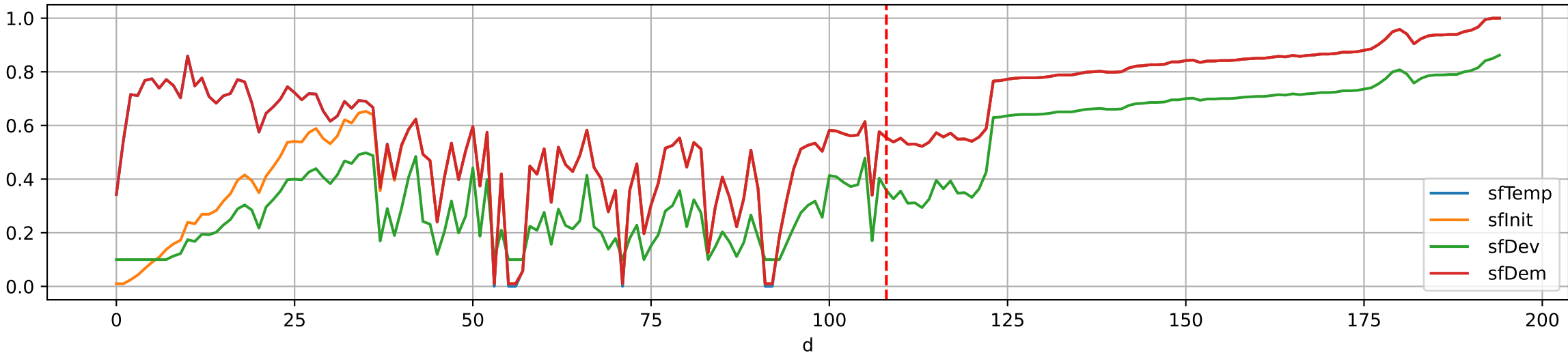
['S1T6Fr1']



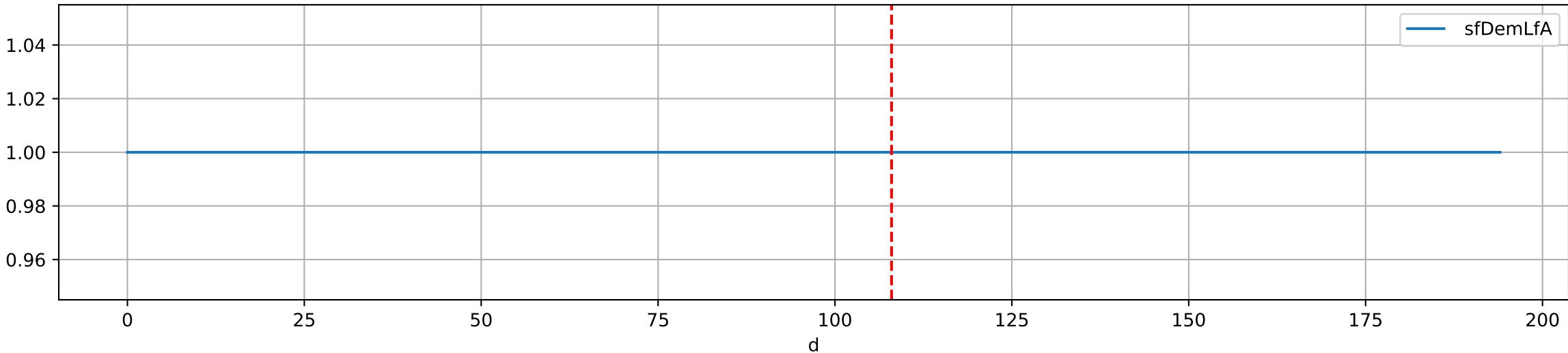
Plot Env Data



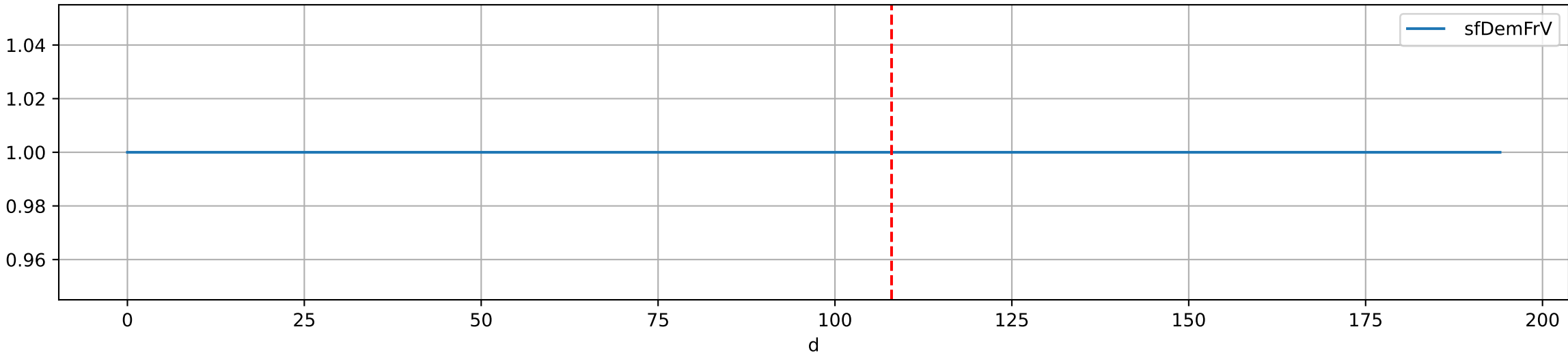
Plot [['sfTemp', 'sfInit', 'sfDev', 'sfDem']]



Plot ['sfDemLfA']



Plot ['sfDemFrV']





Plot EnvOpt Decision

