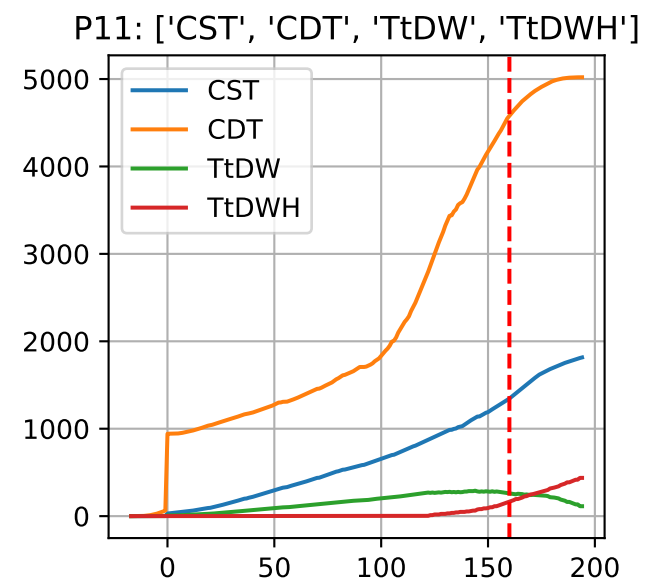
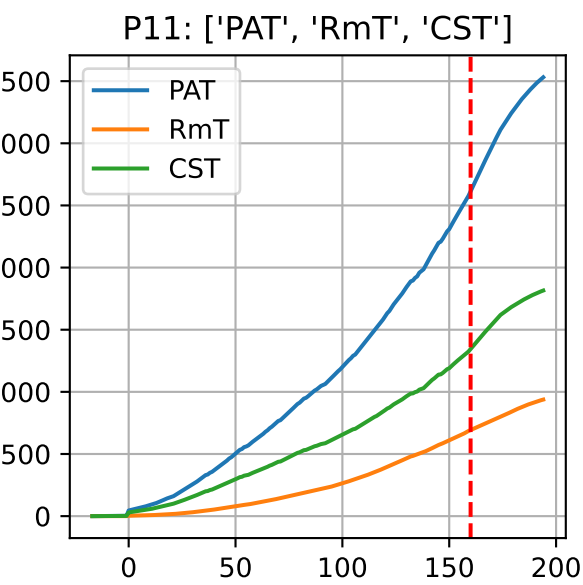
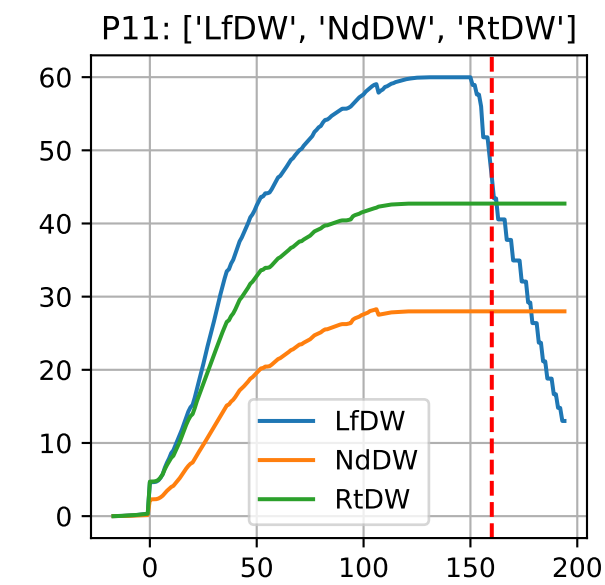
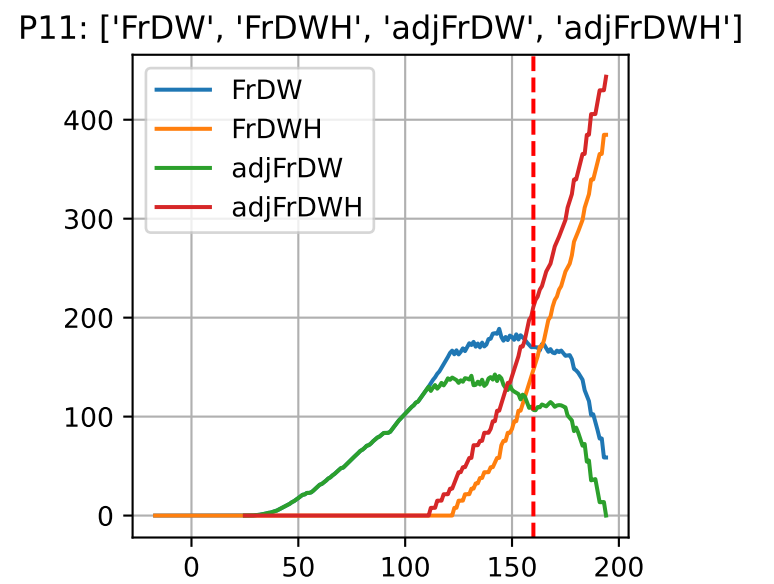
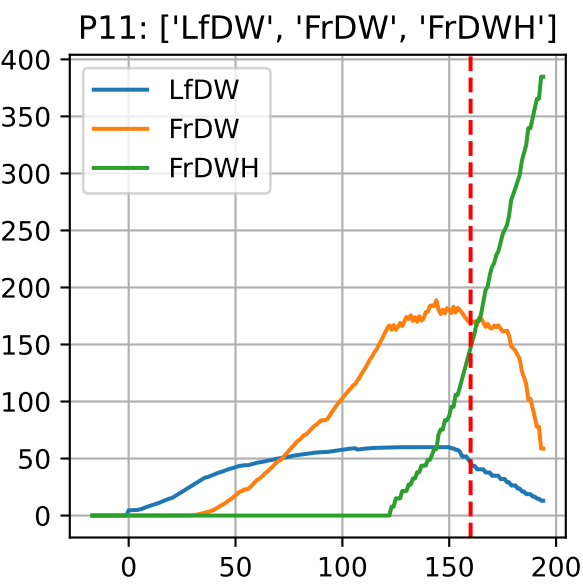
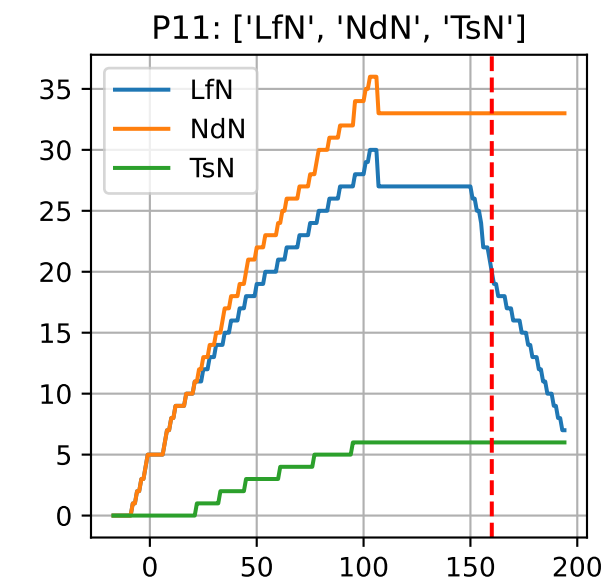
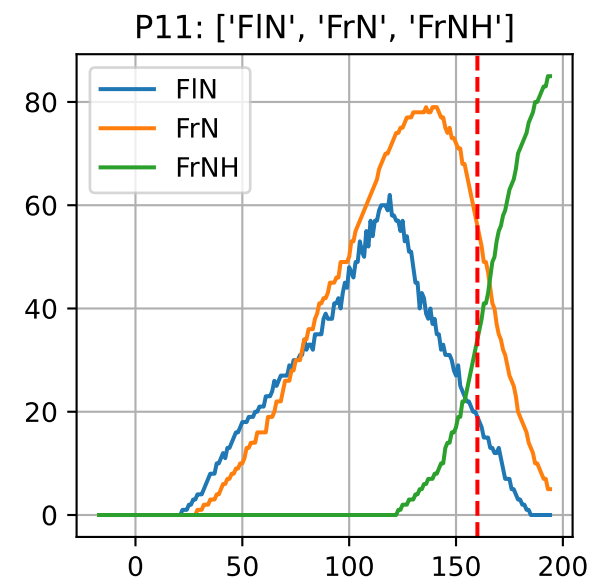
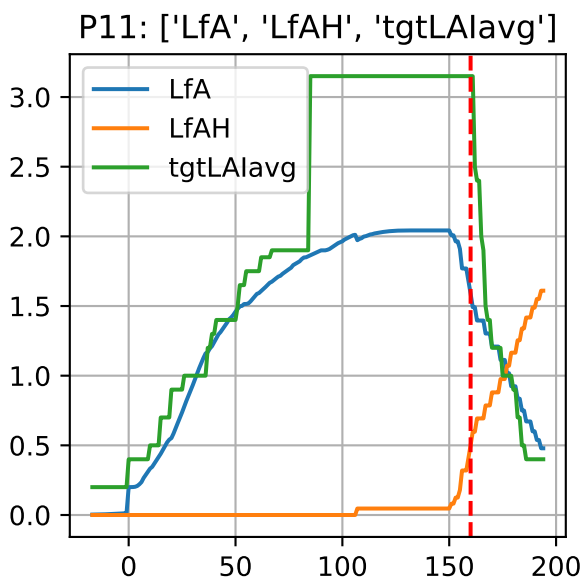
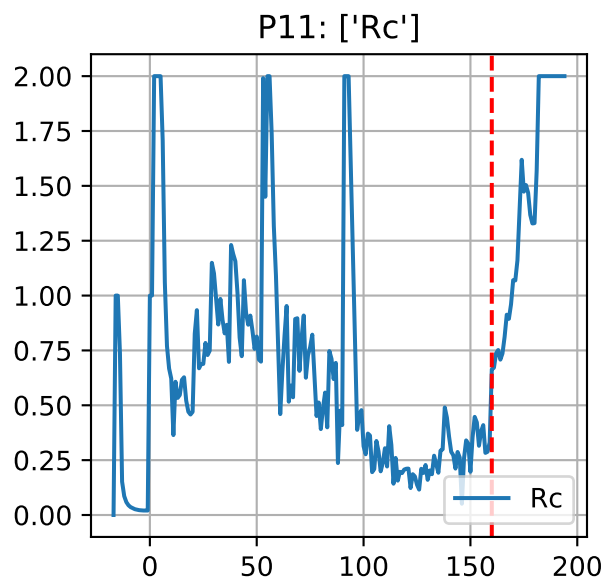
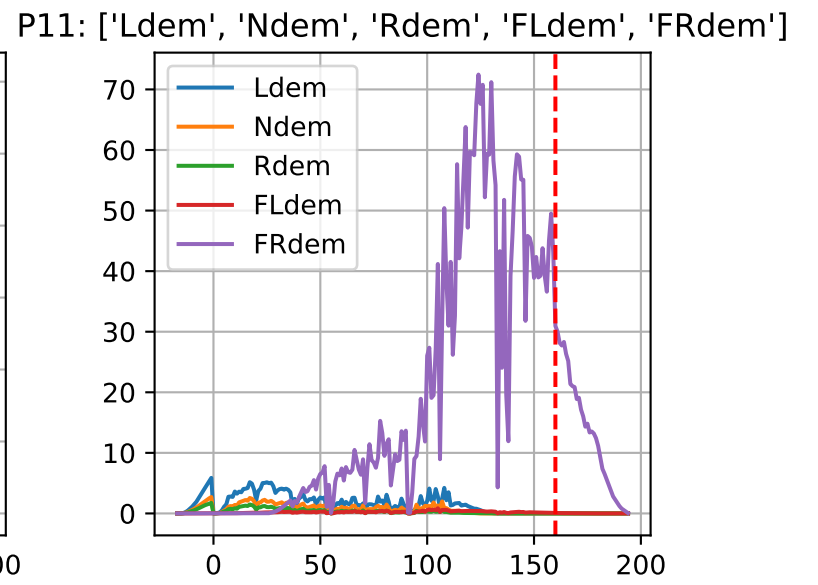
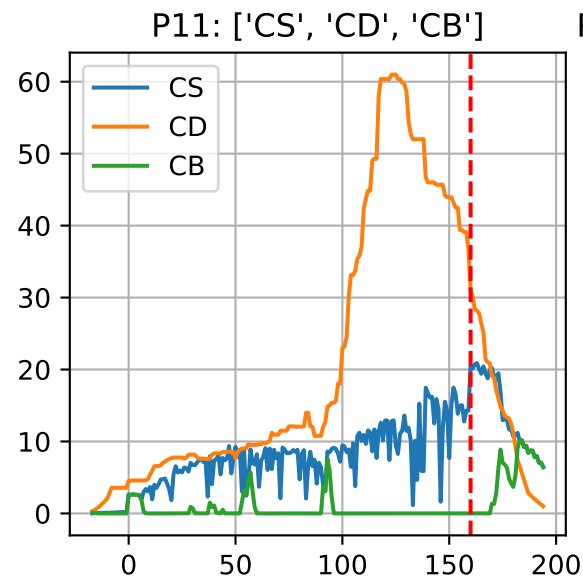
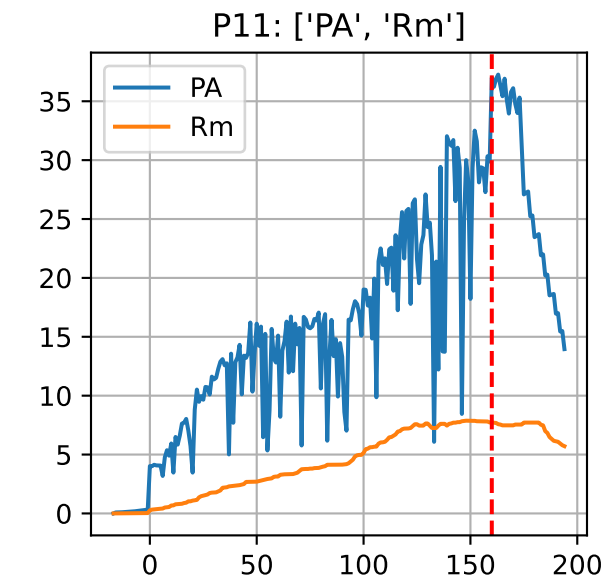
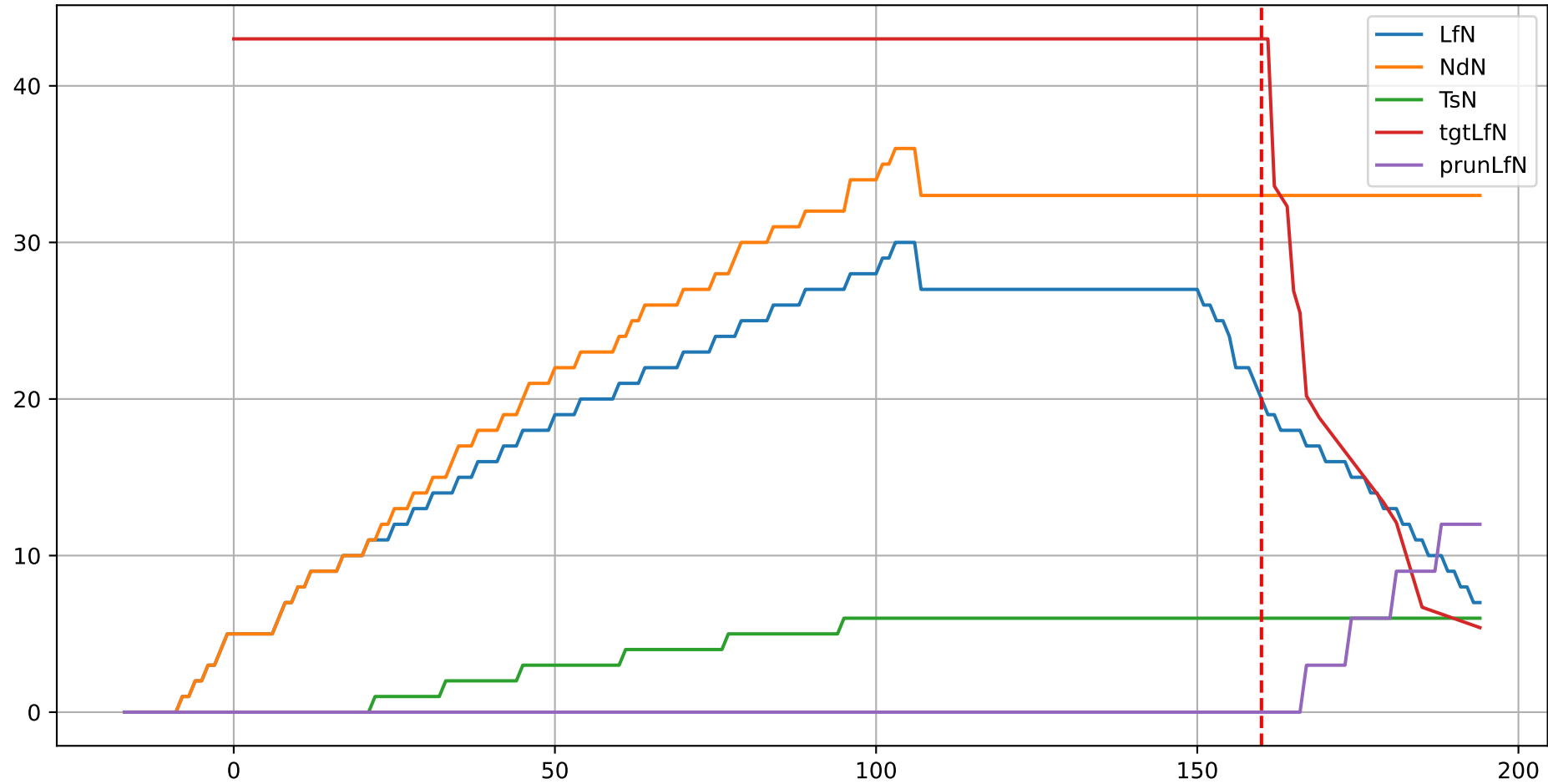


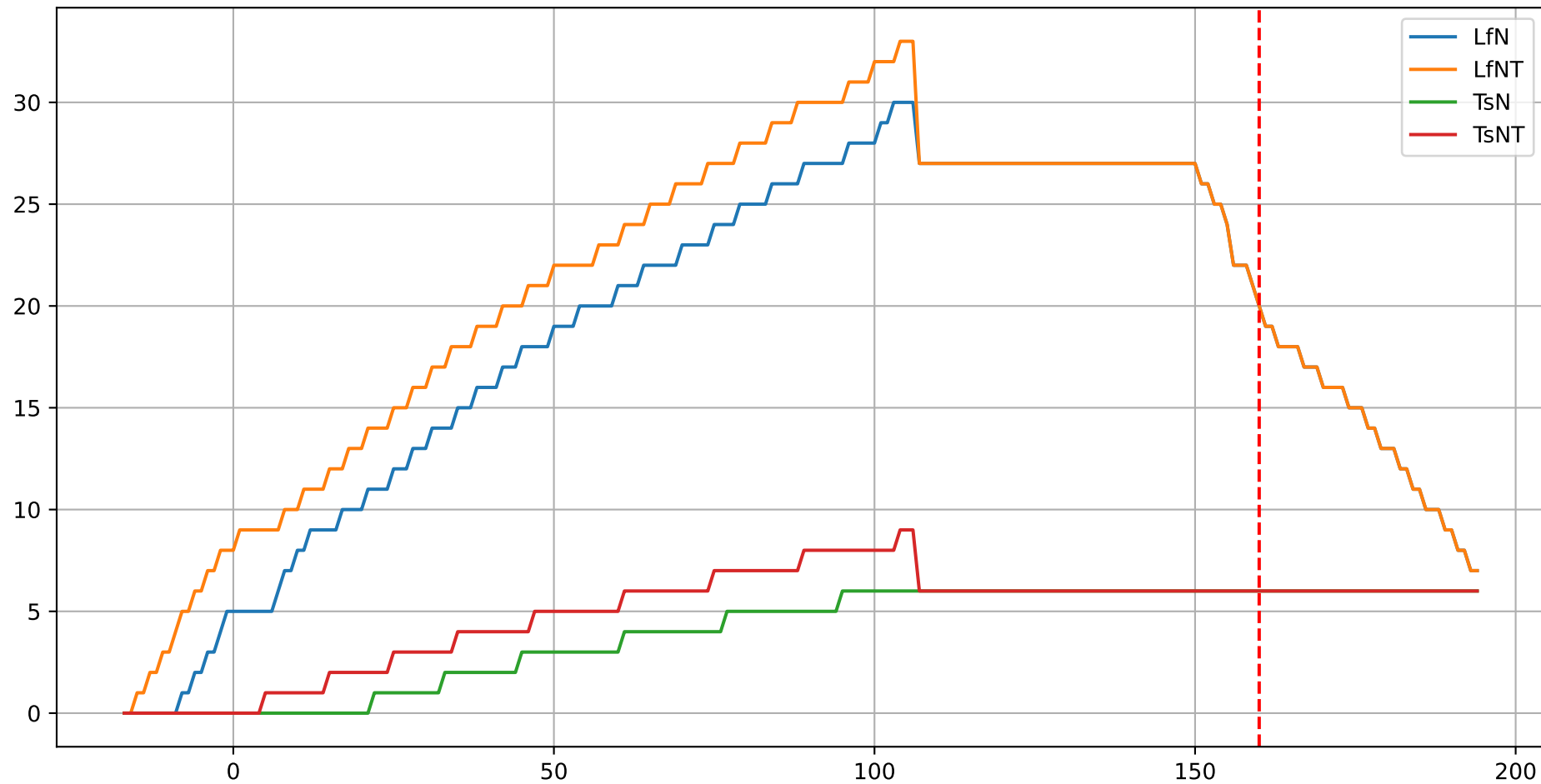
Model Prediction (P11)



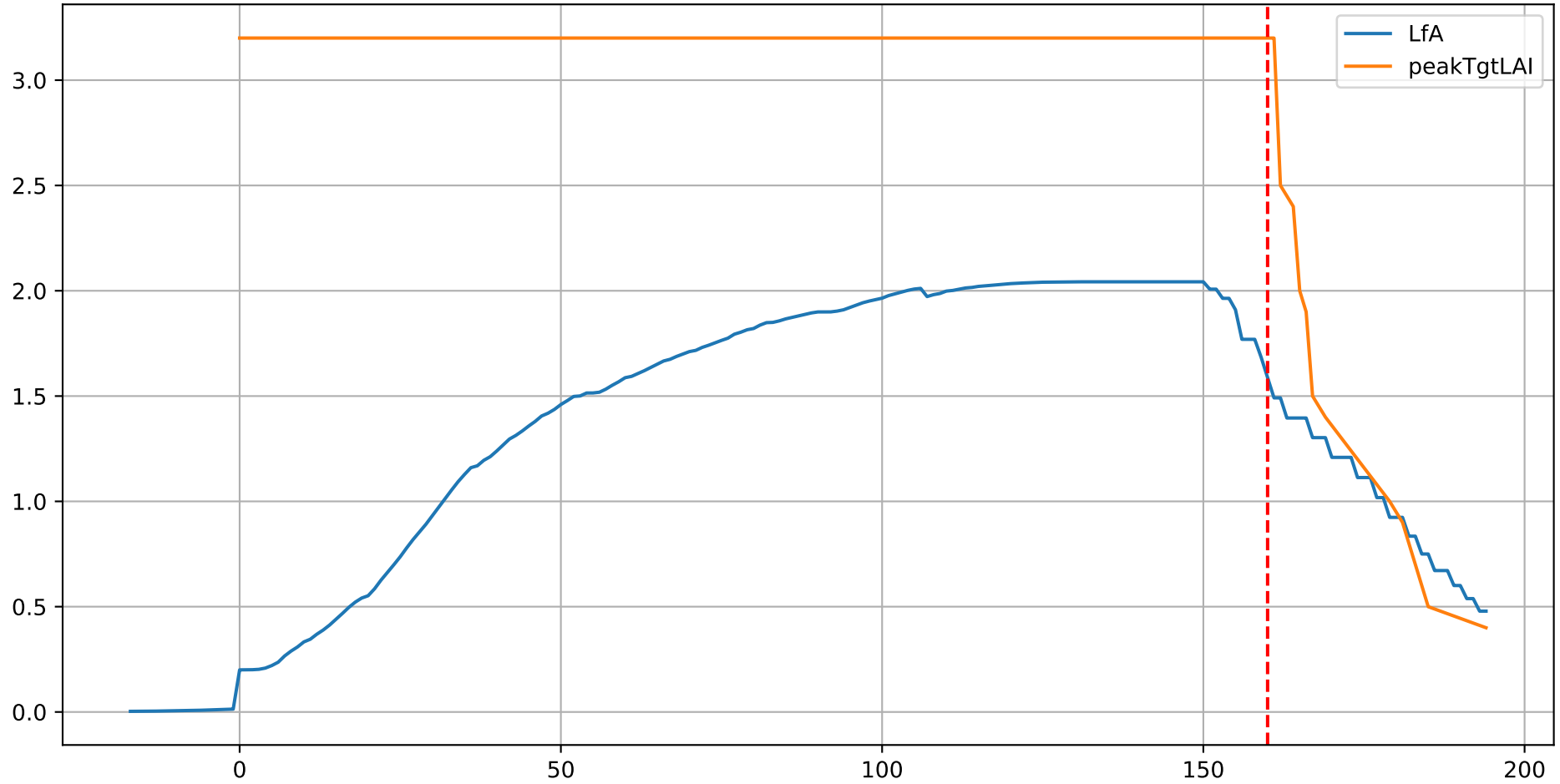
P11: ['LfN', 'NdN', 'TsN', 'tgtLfN', 'prunLfN']



P11: ['LfN', 'LfNT', 'TsN', 'TsNT']

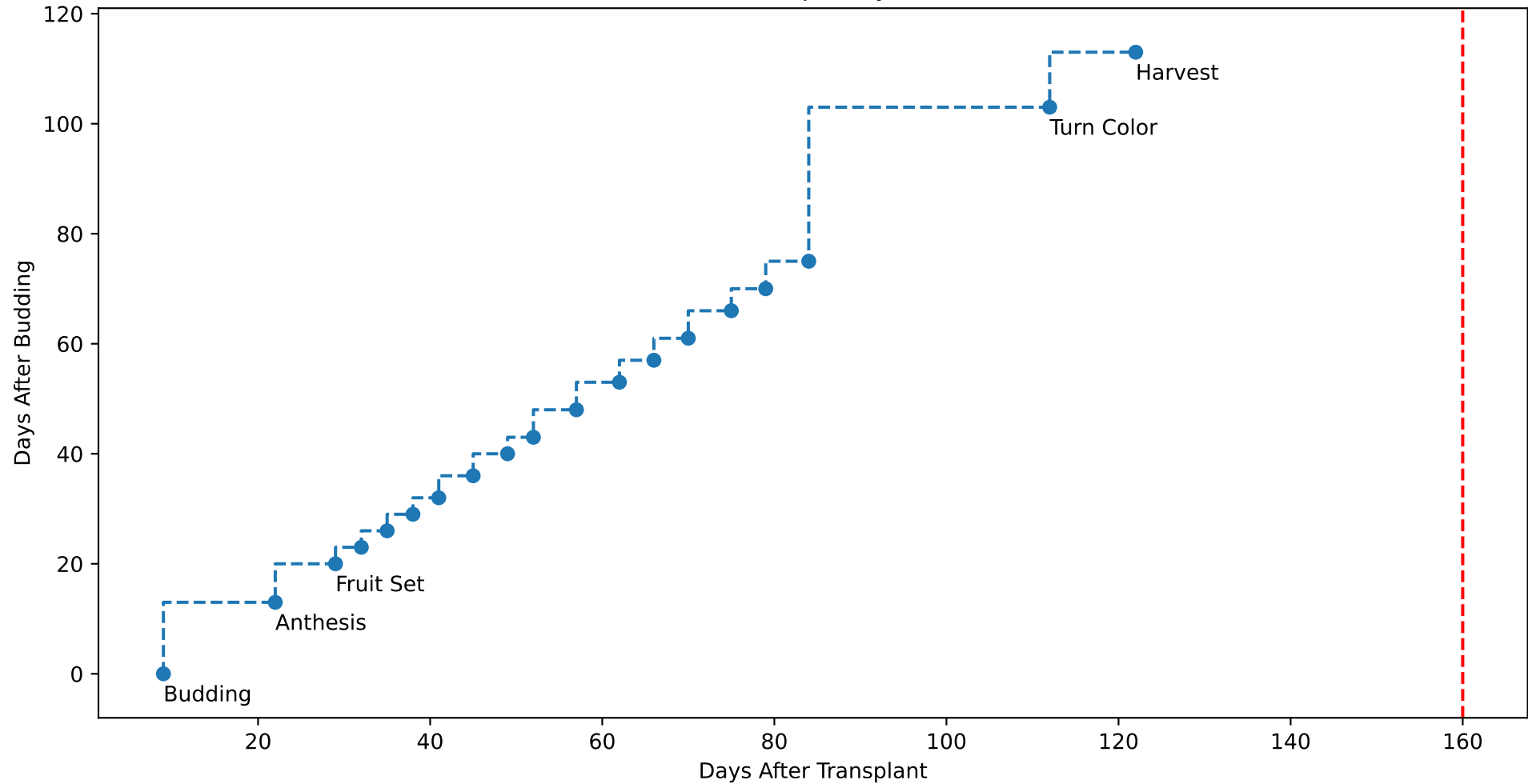


P11: ['LfA', 'peakTgtLAI']

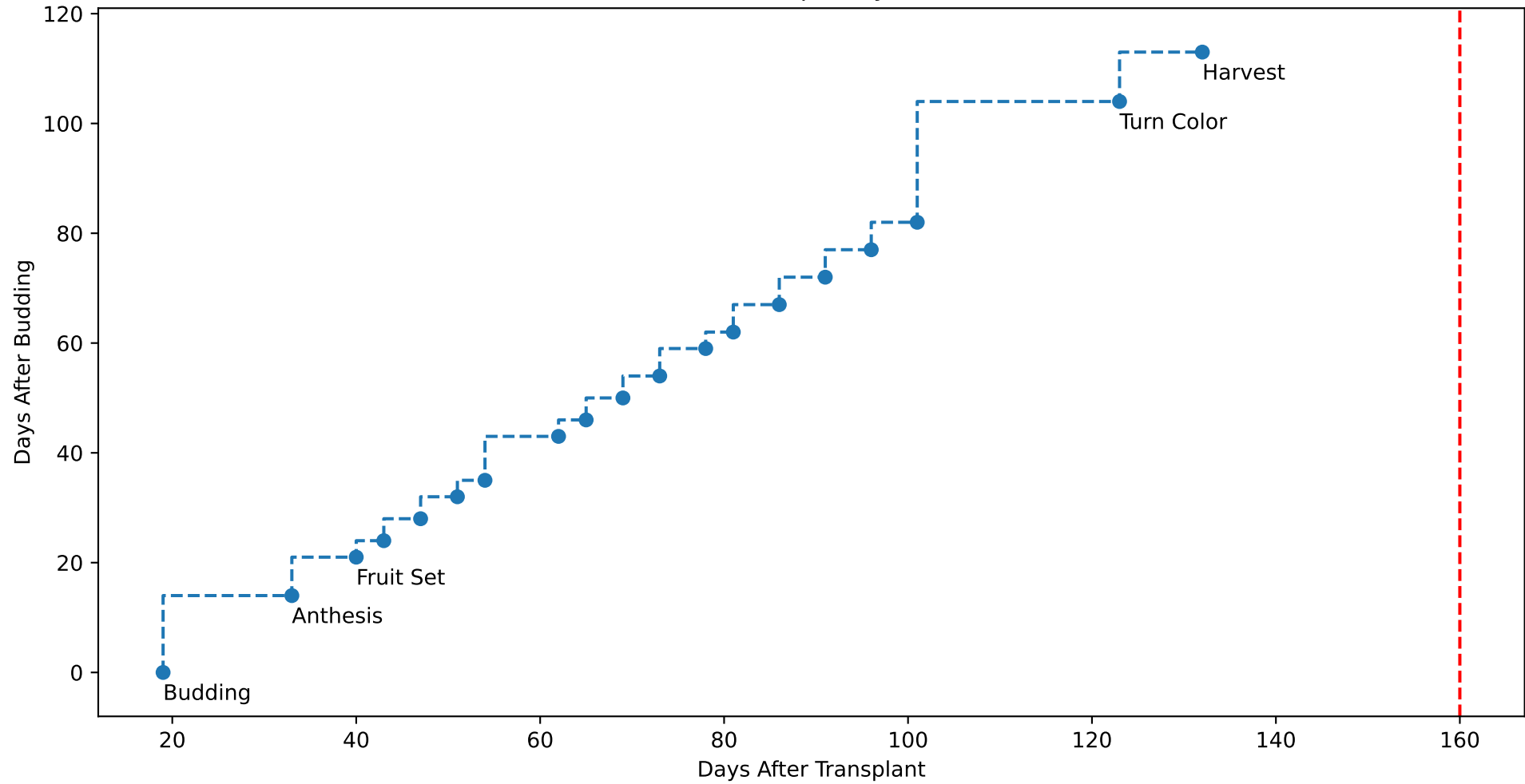




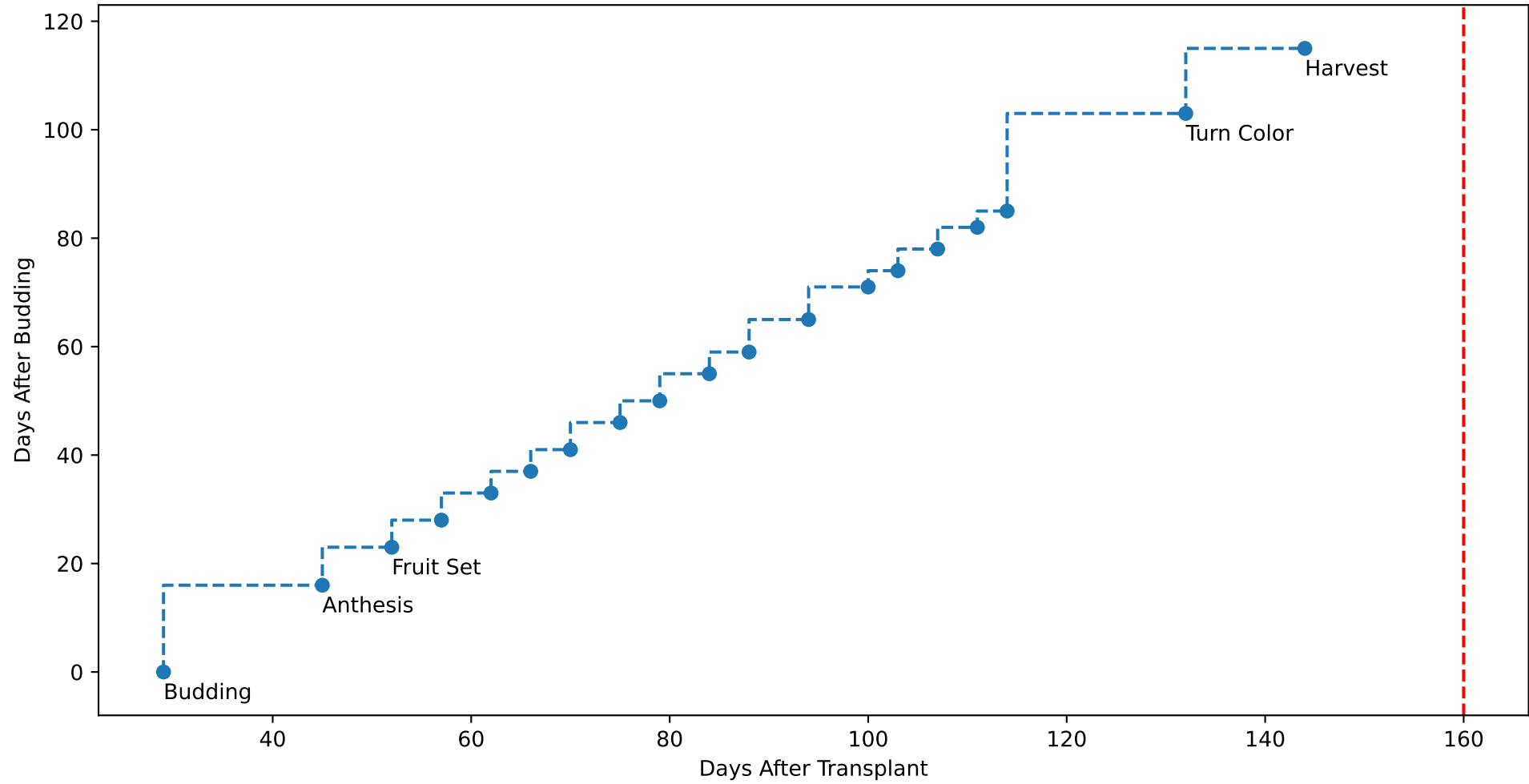
P11 TsN1 (plot by DAT)



P11 TsN2 (plot by DAT)

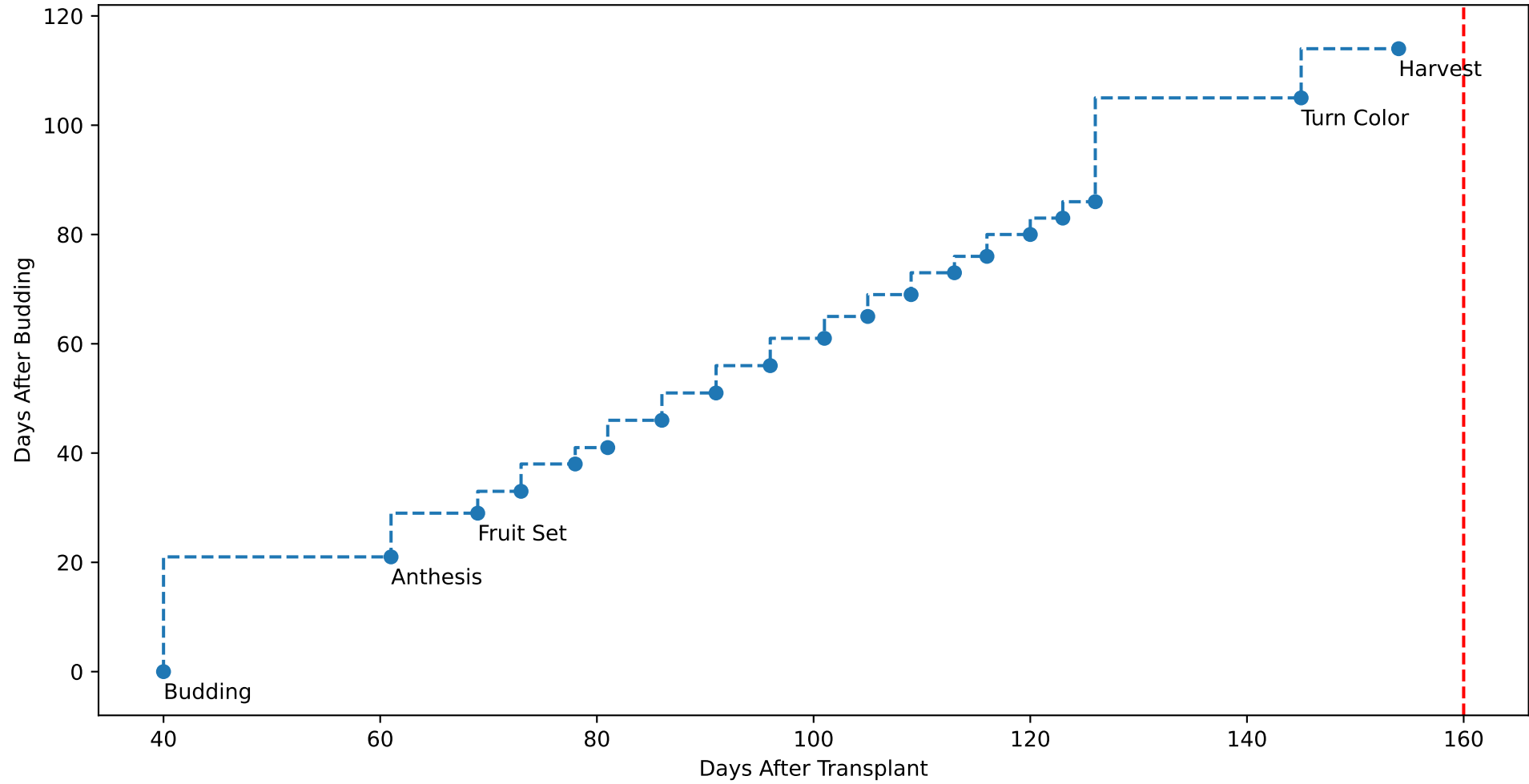


P11 TsN3 (plot by DAT)

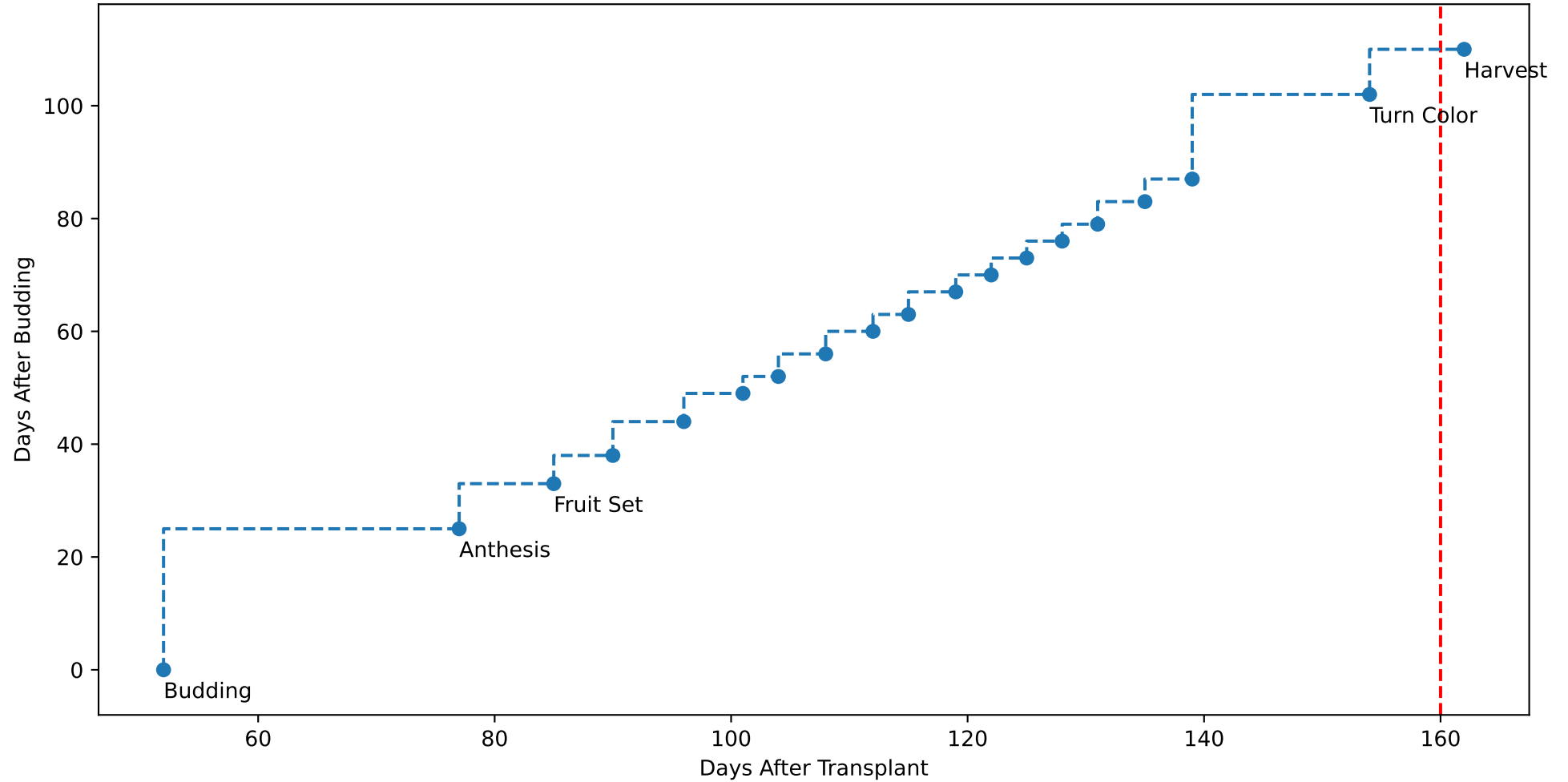




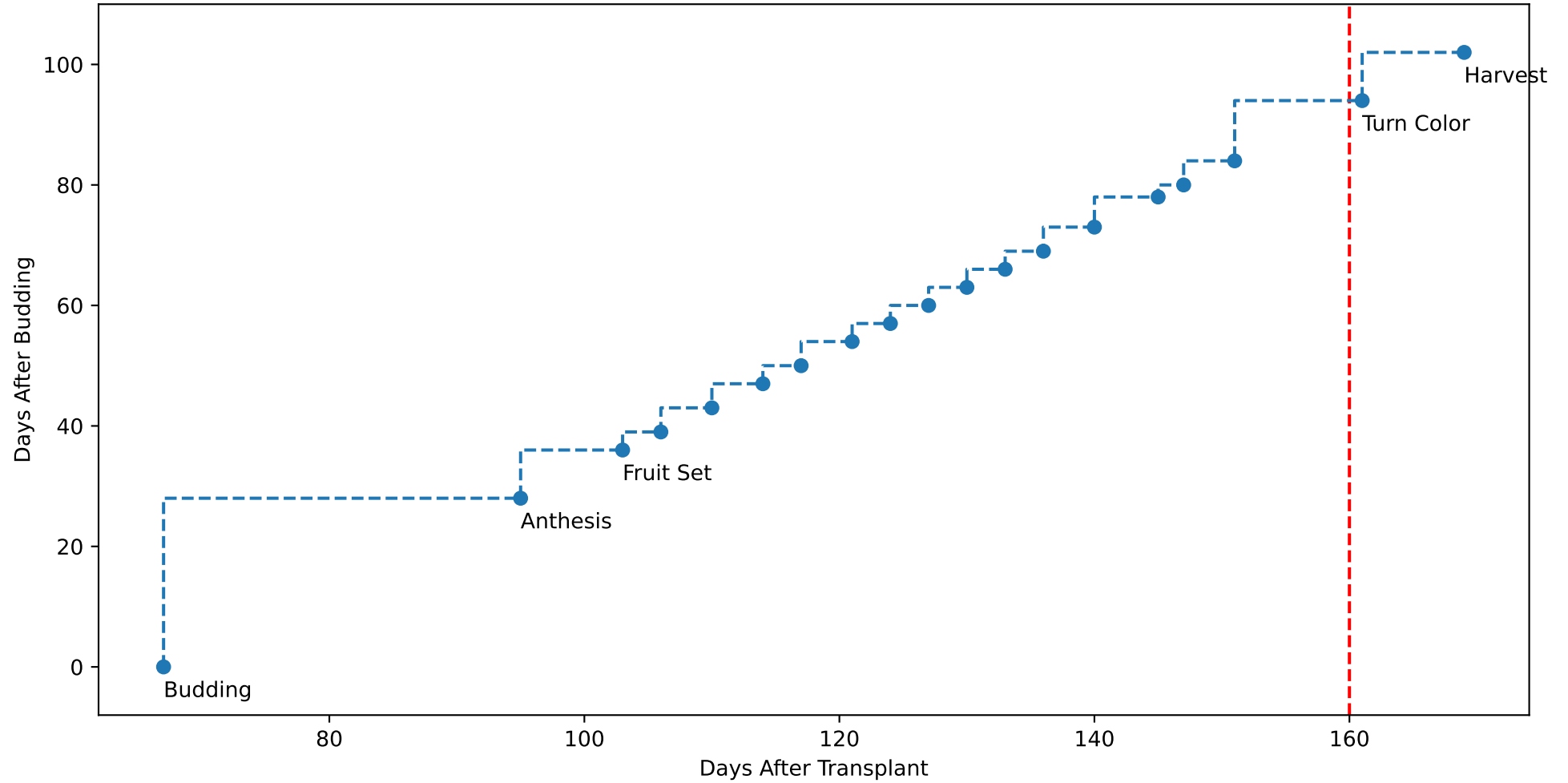
P11 TsN4 (plot by DAT)



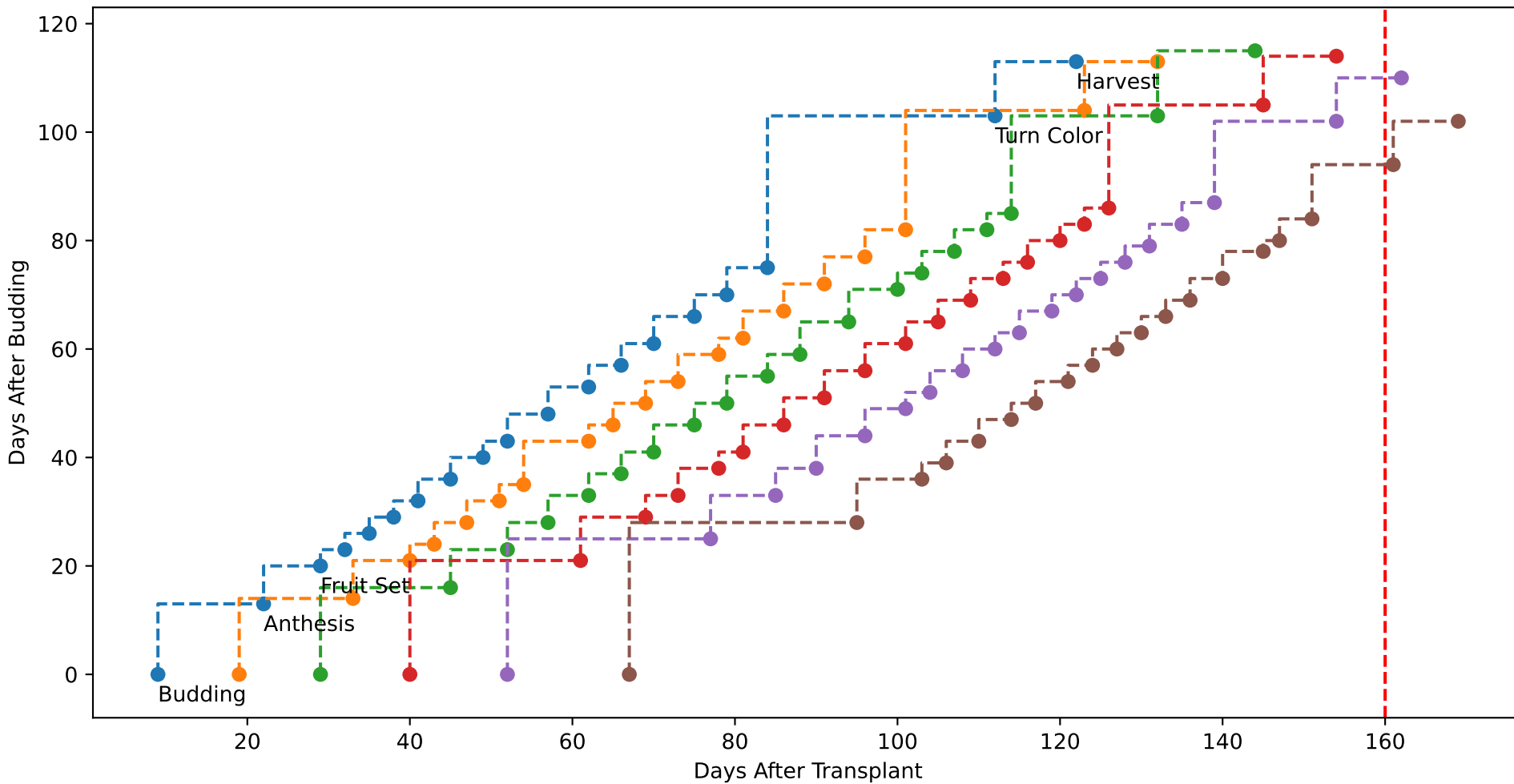
P11 TsN5 (plot by DAT)



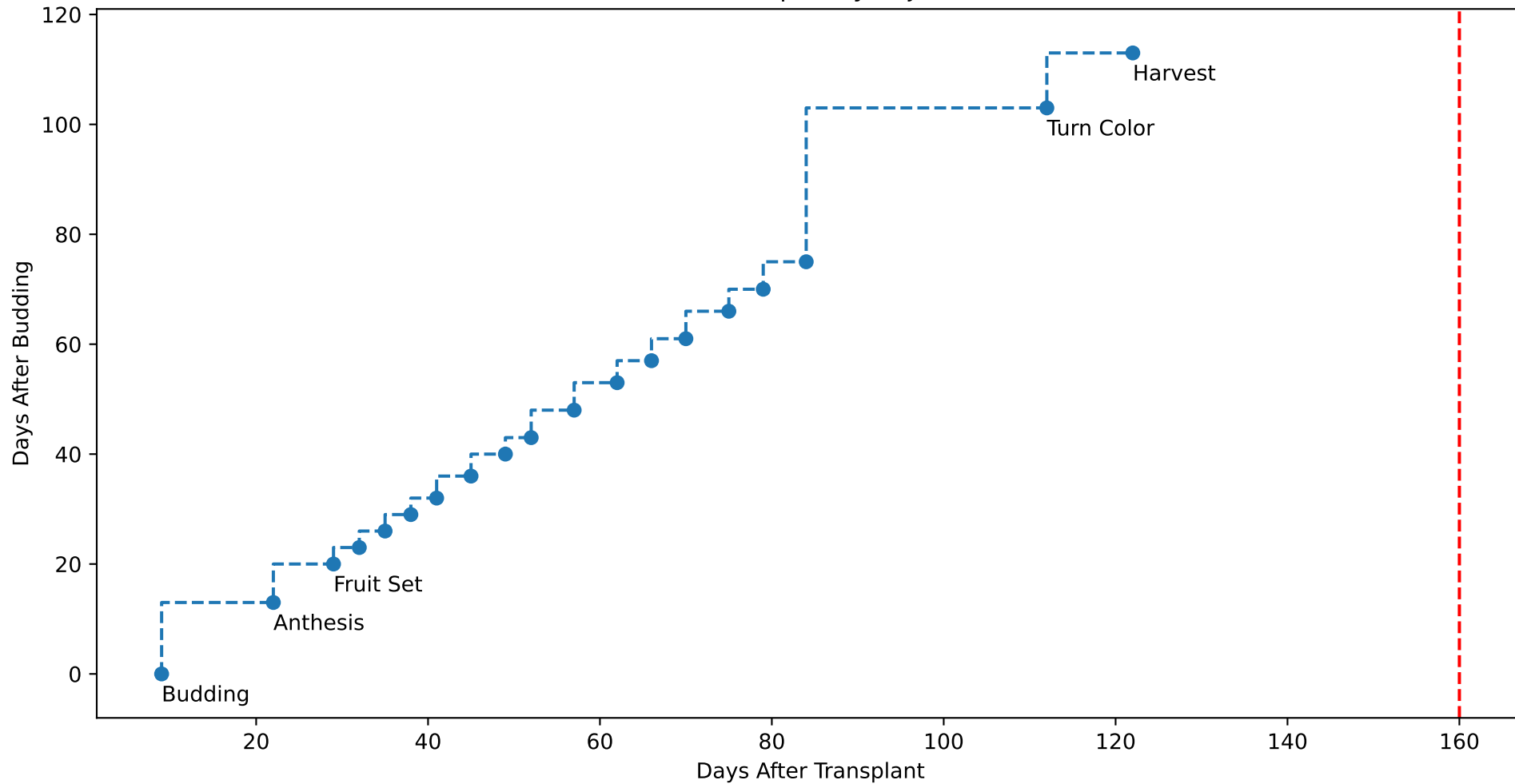
P11 TsN6 (plot by DAT)



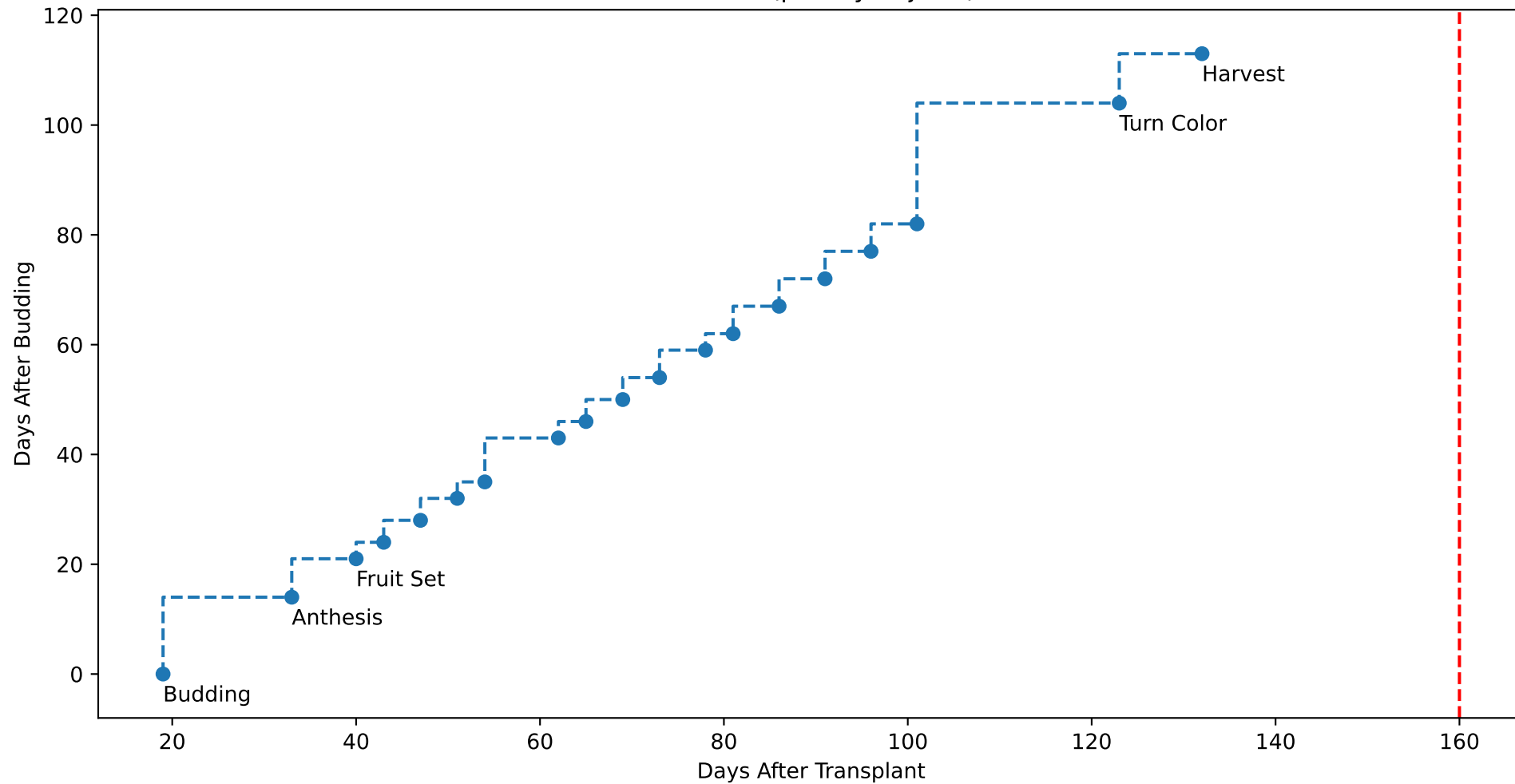
P11 (plot by adjDAT)



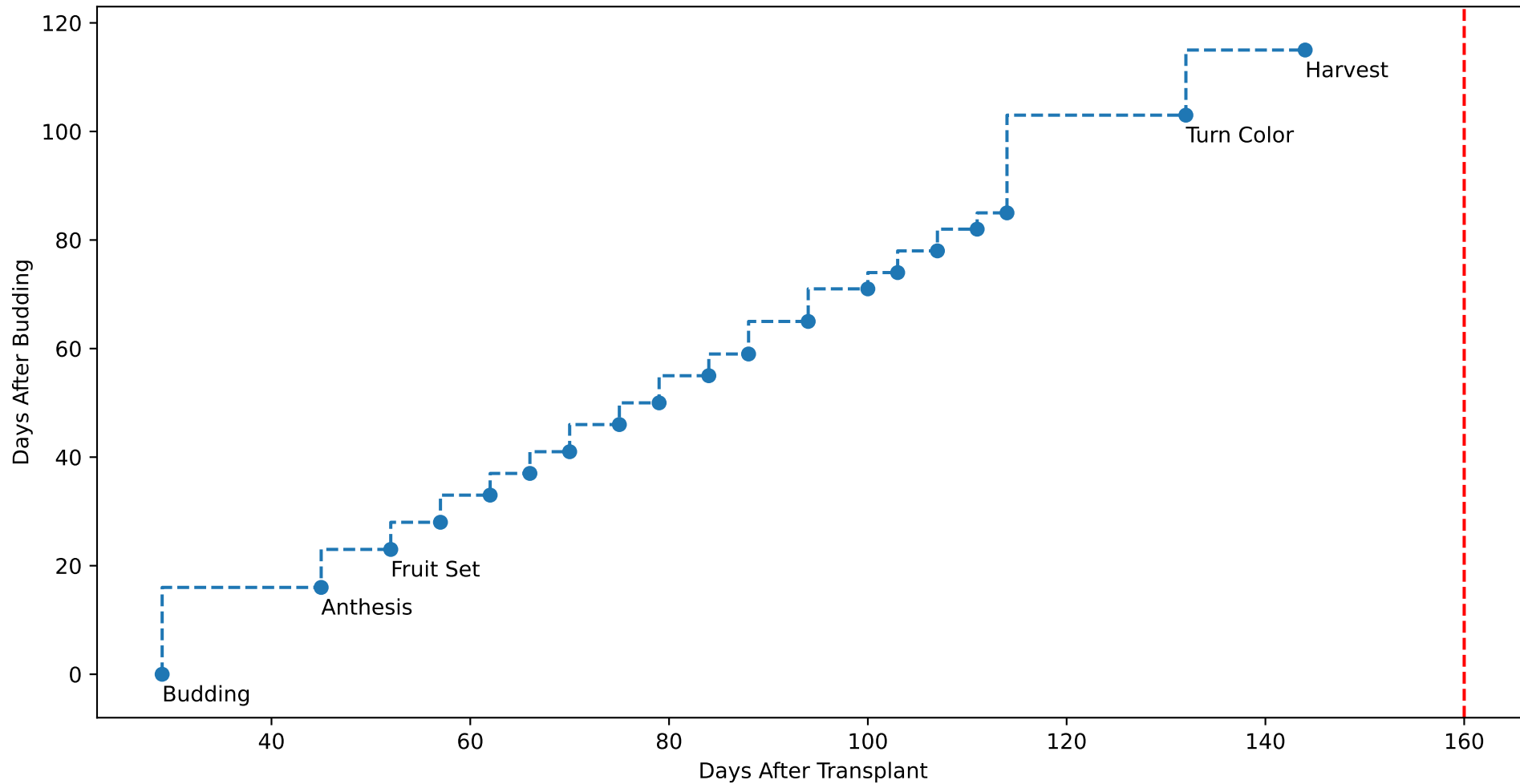
P11 TsN1 (plot by adjDAT)



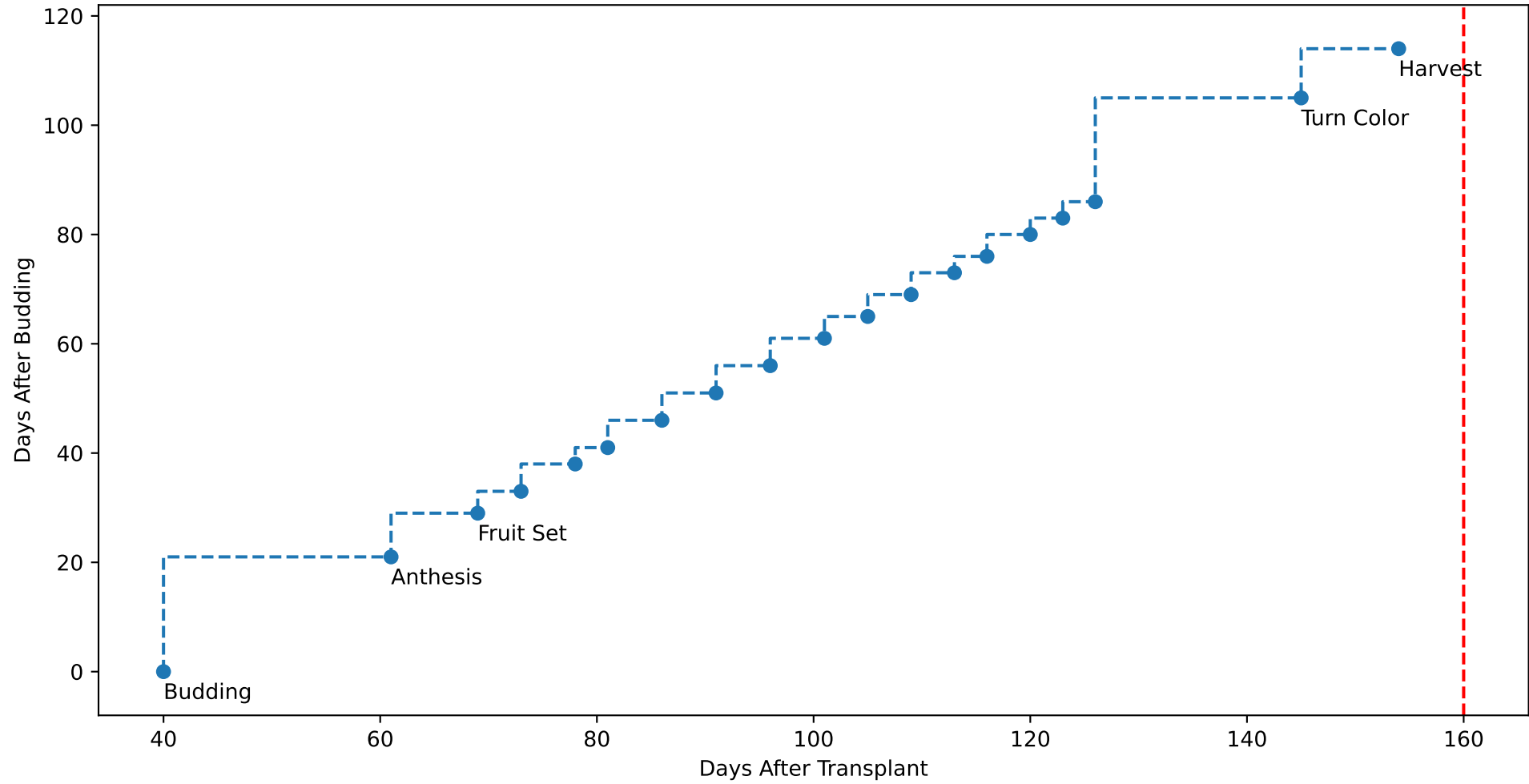
P11 TsN2 (plot by adjDAT)



P11 TsN3 (plot by adjDAT)

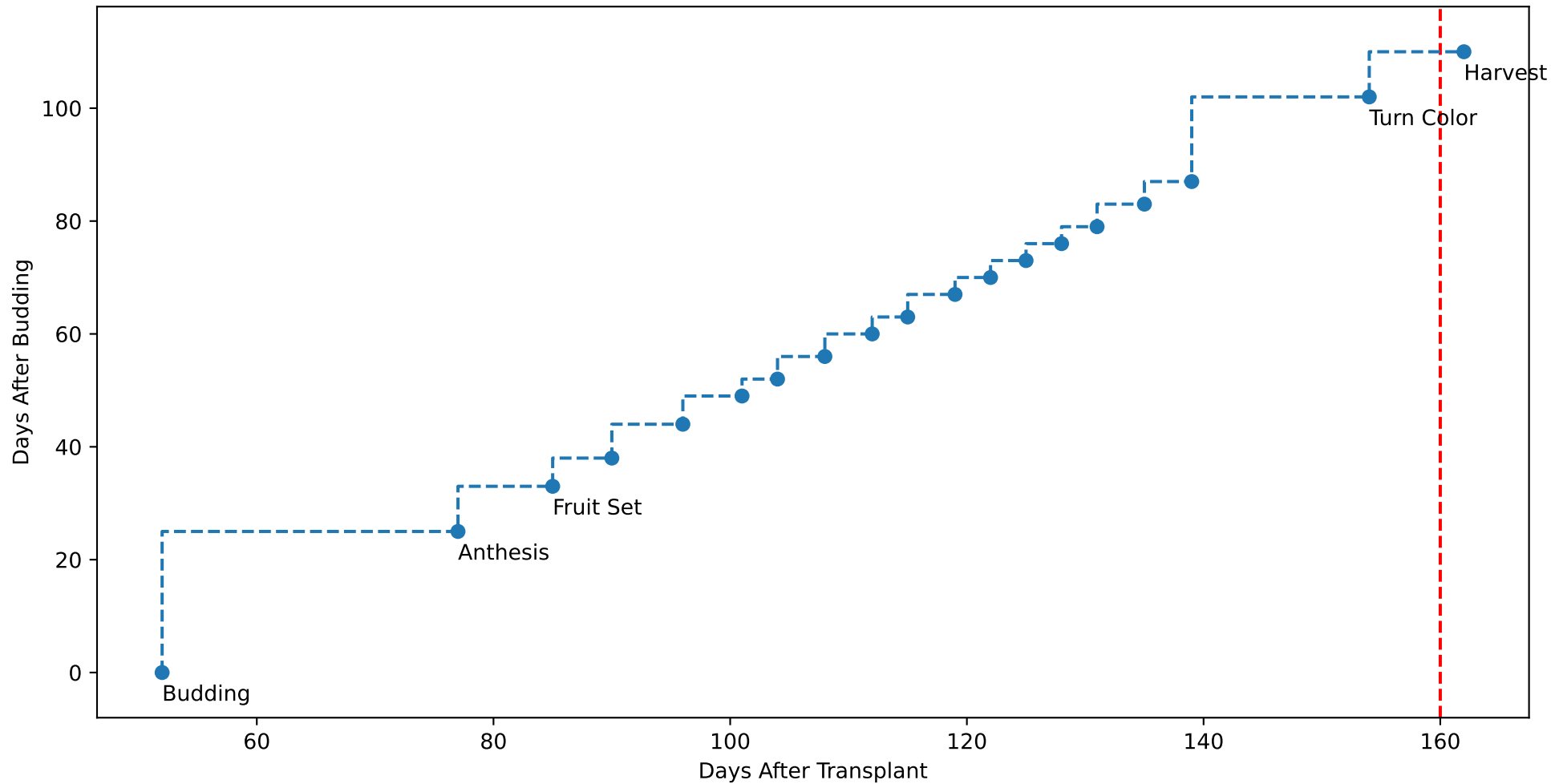


P11 TsN4 (plot by adjDAT)

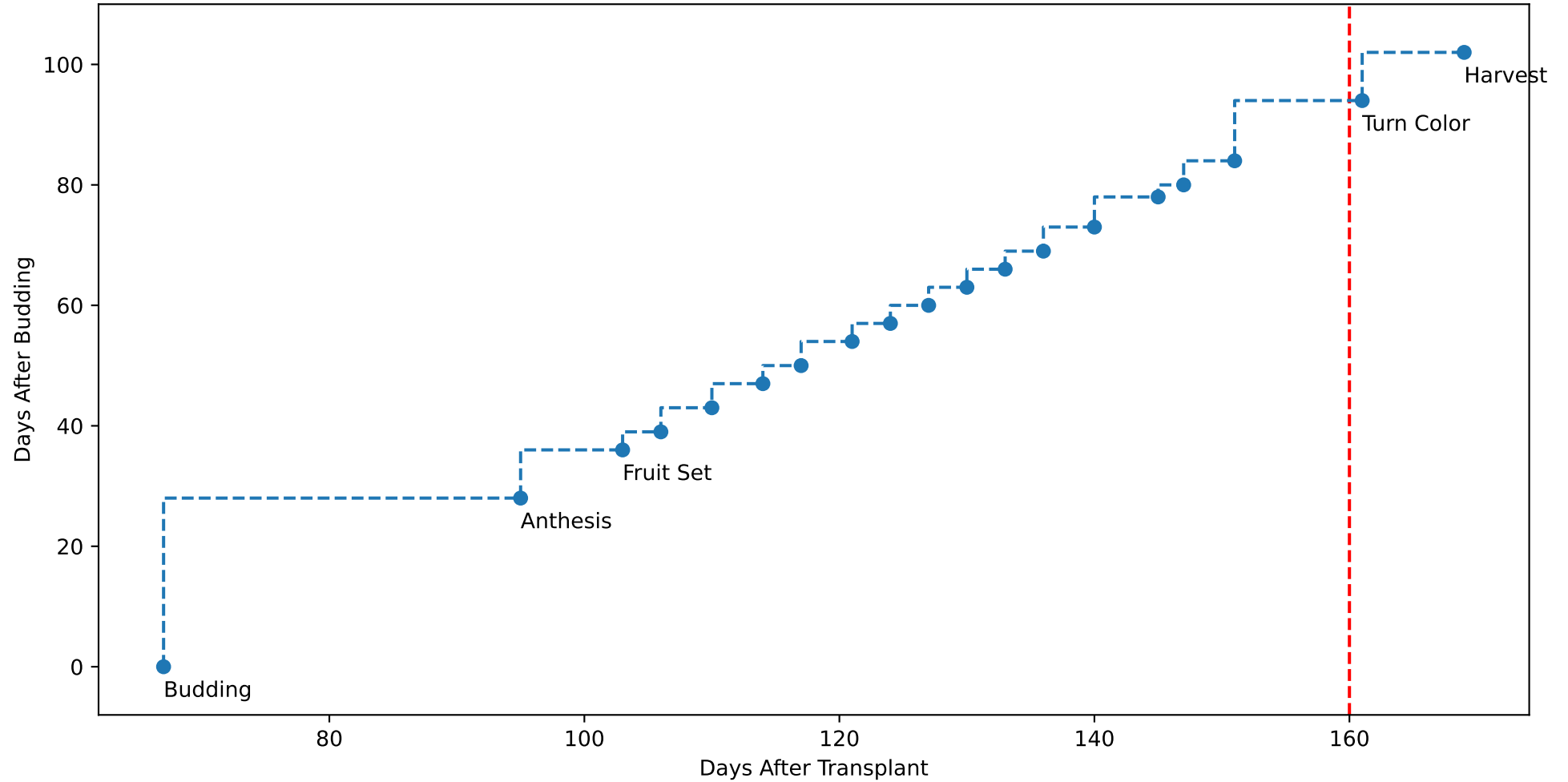




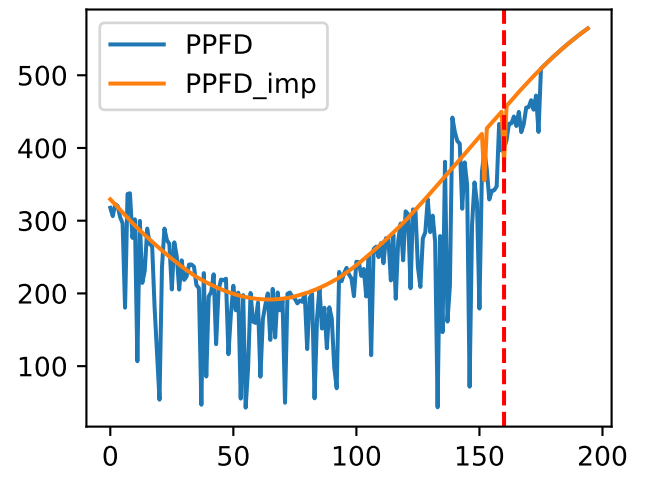
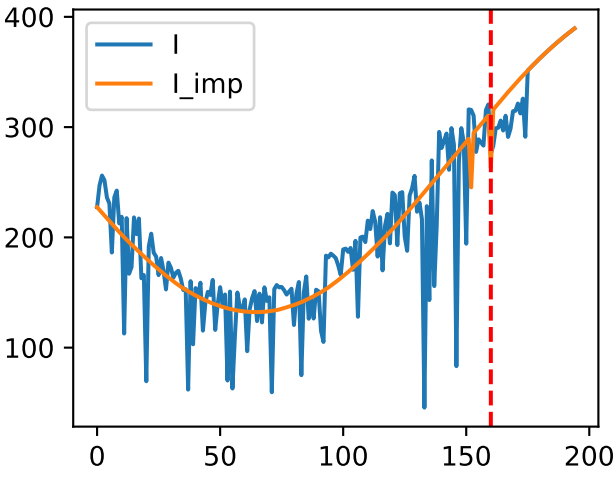
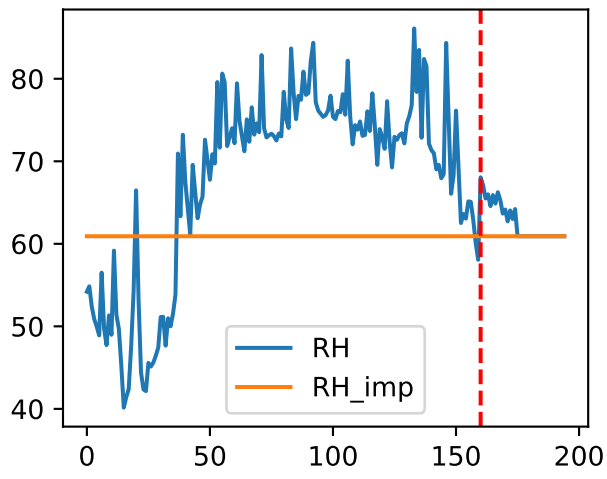
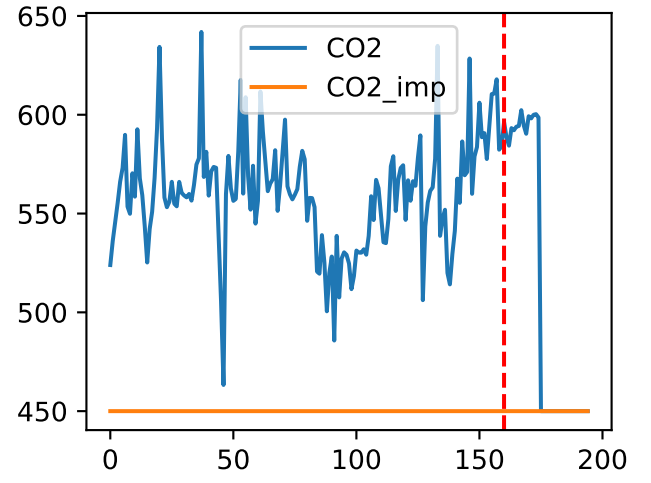
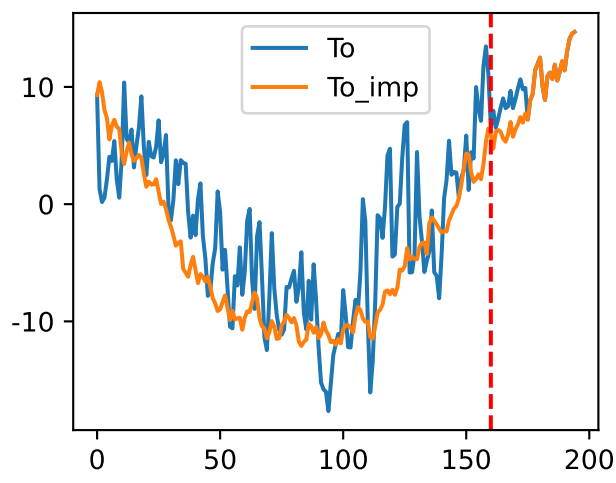
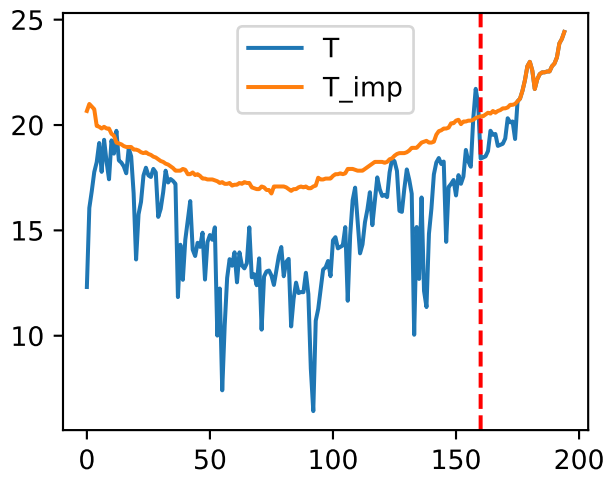
P11 TsN5 (plot by adjDAT)



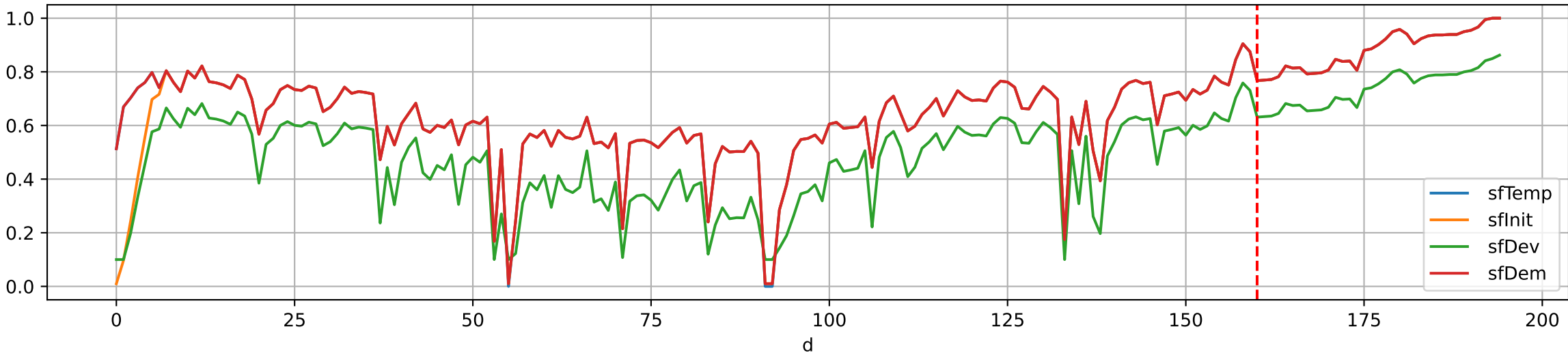
P11 TsN6 (plot by adjDAT)



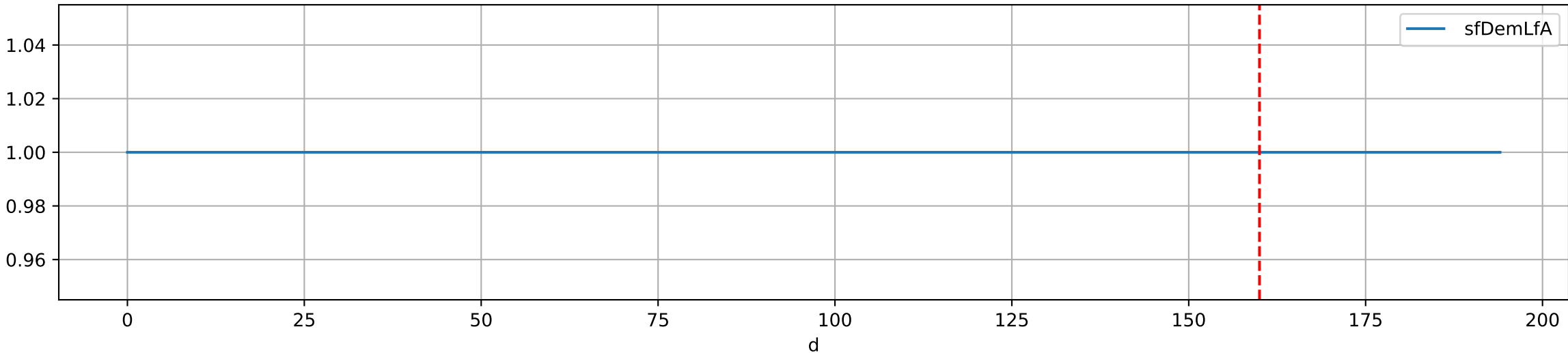
Plot Env Data



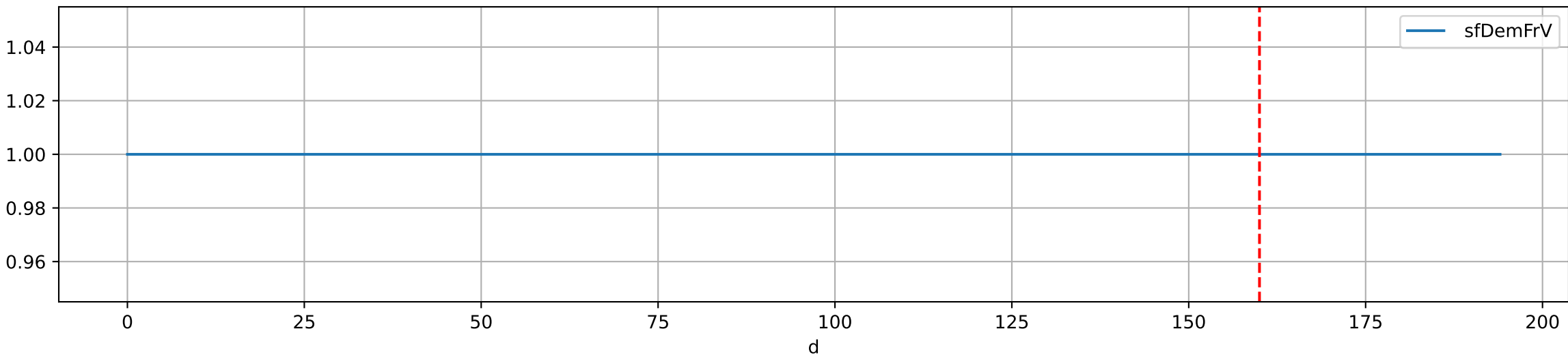
Plot [['sfTemp', 'sfInit', 'sfDev', 'sfDem']]



Plot ['sfDemLfA']



Plot ['sfDemFrV']





Plot EnvOpt Decision

