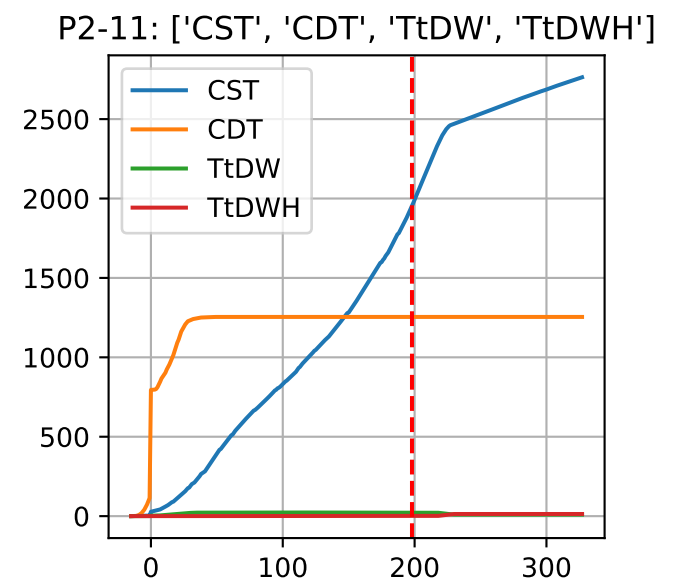
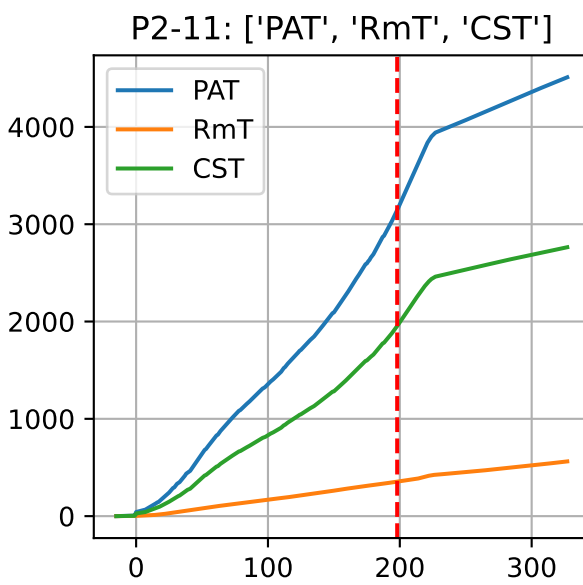
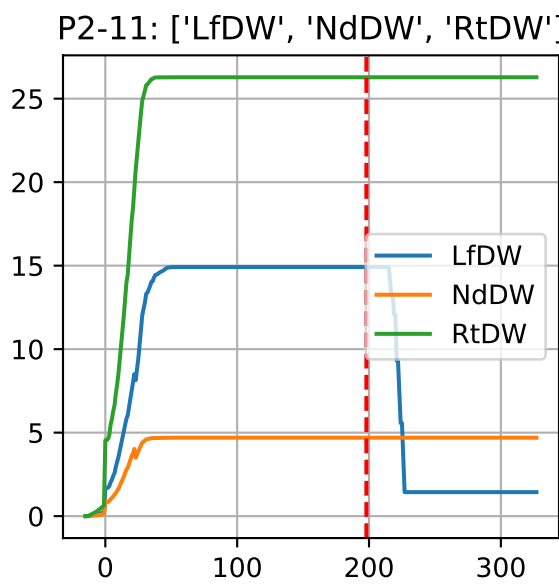
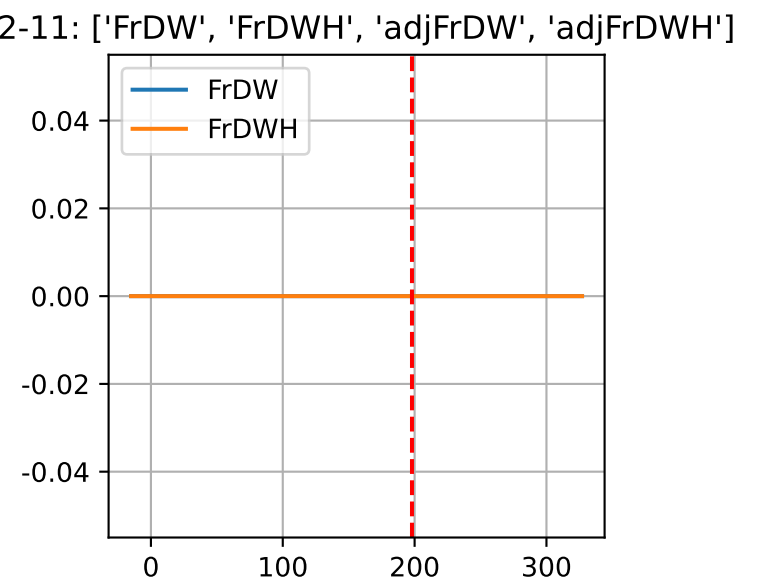
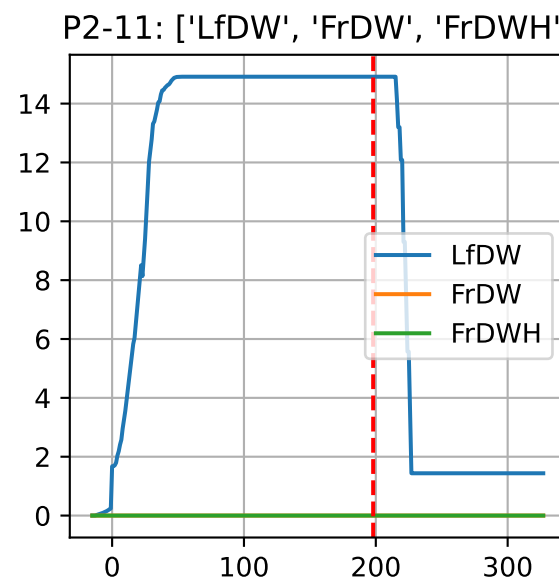
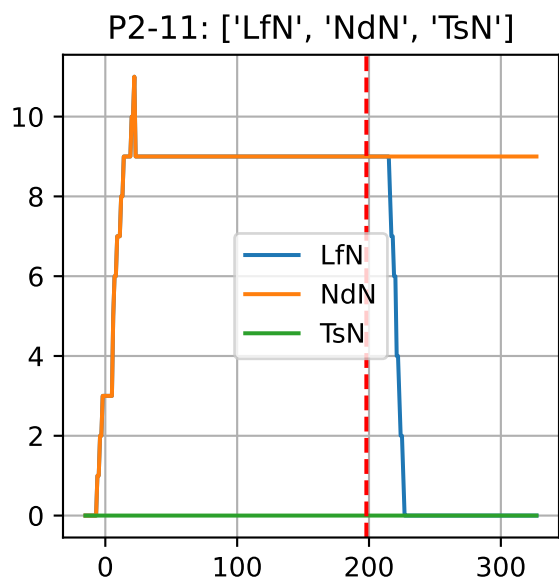
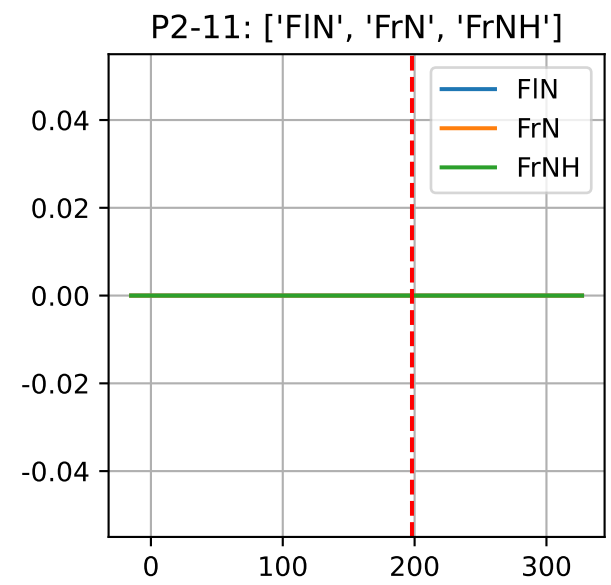
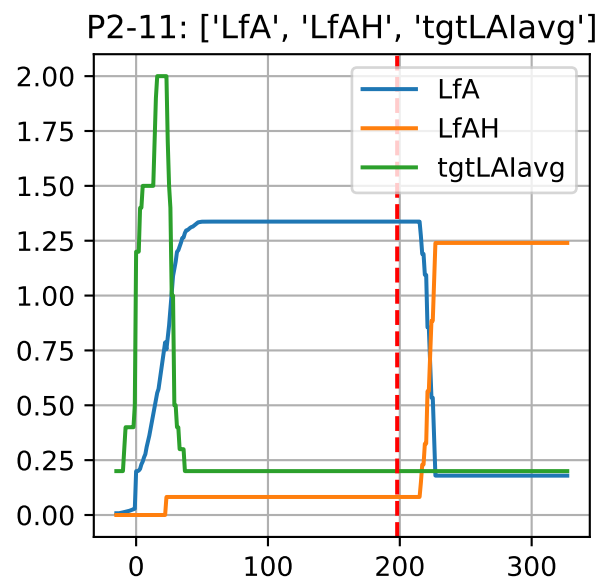
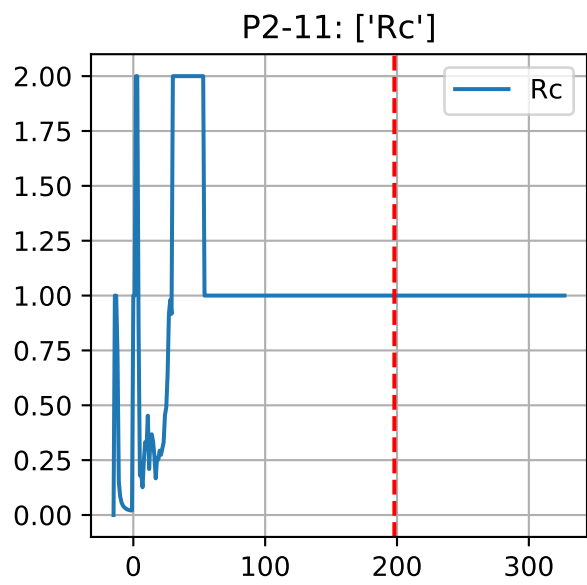
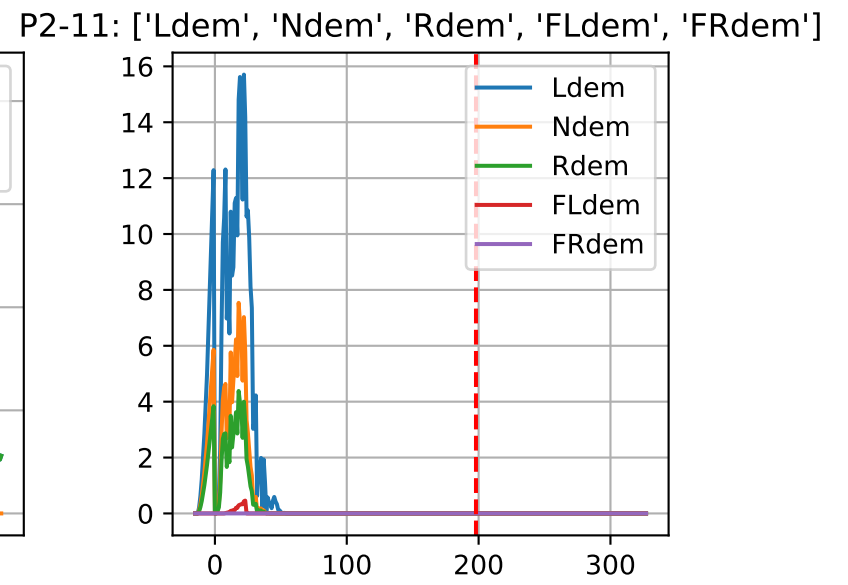
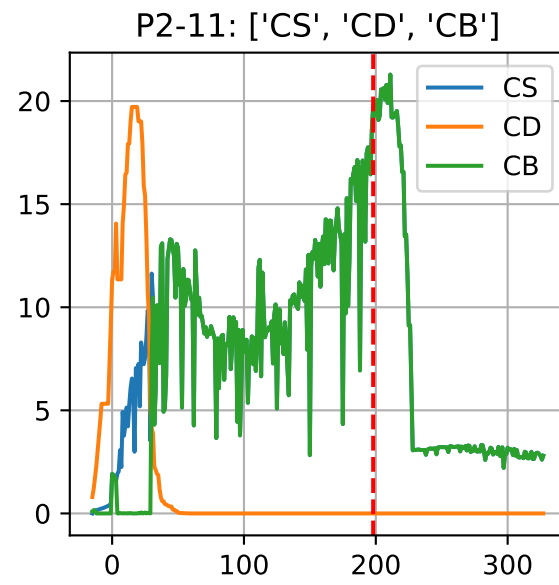
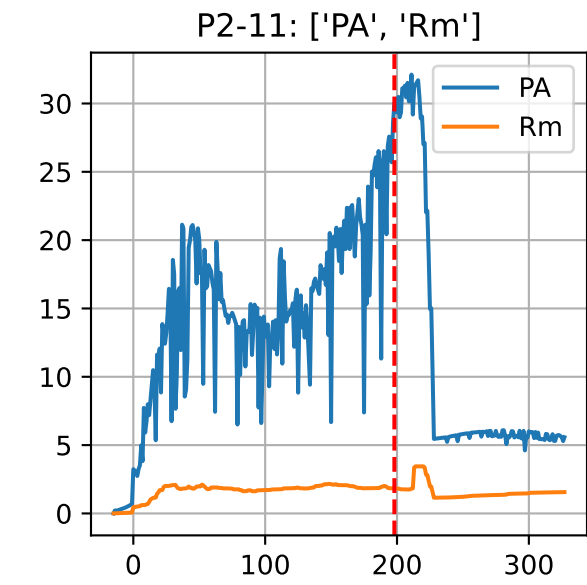
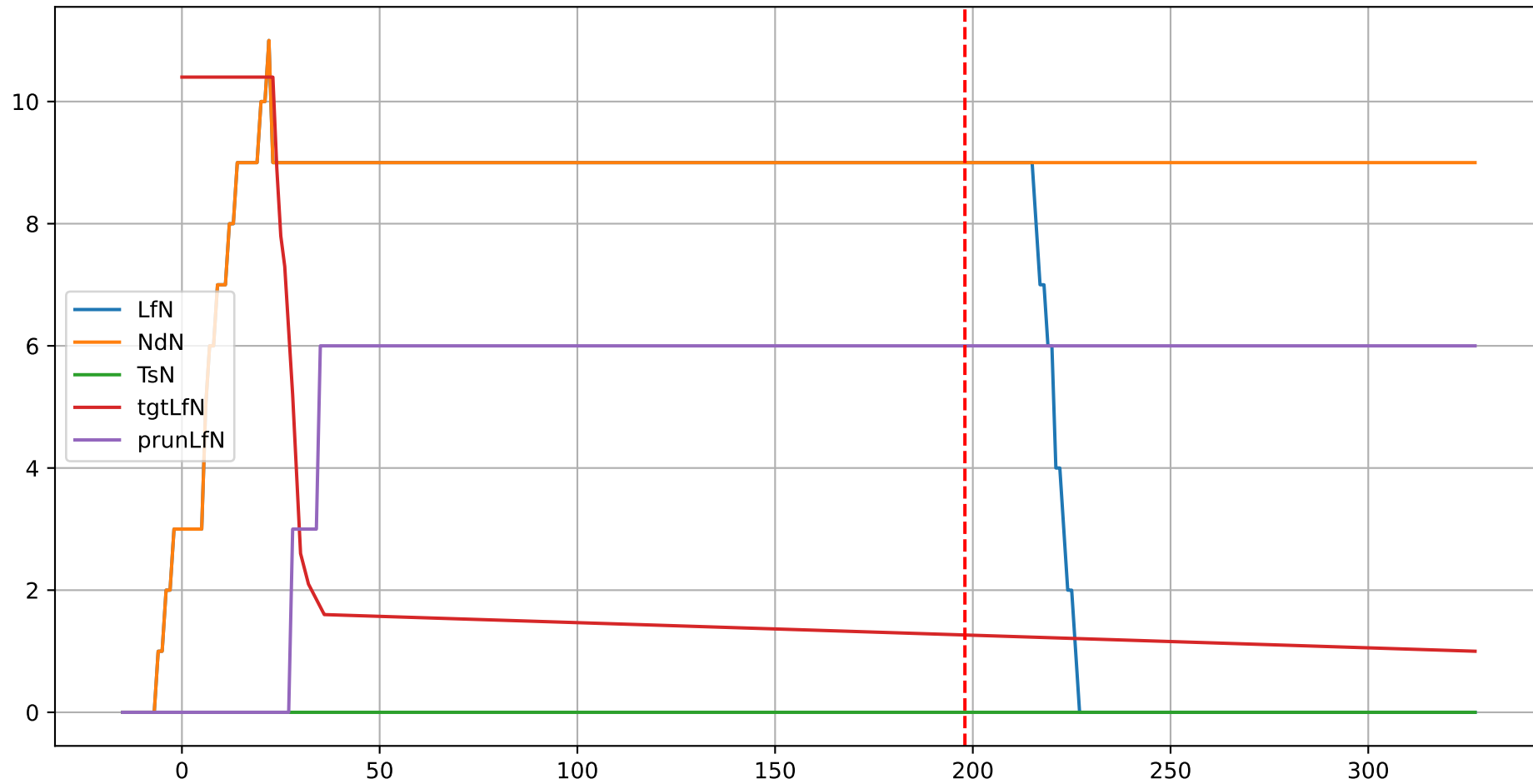


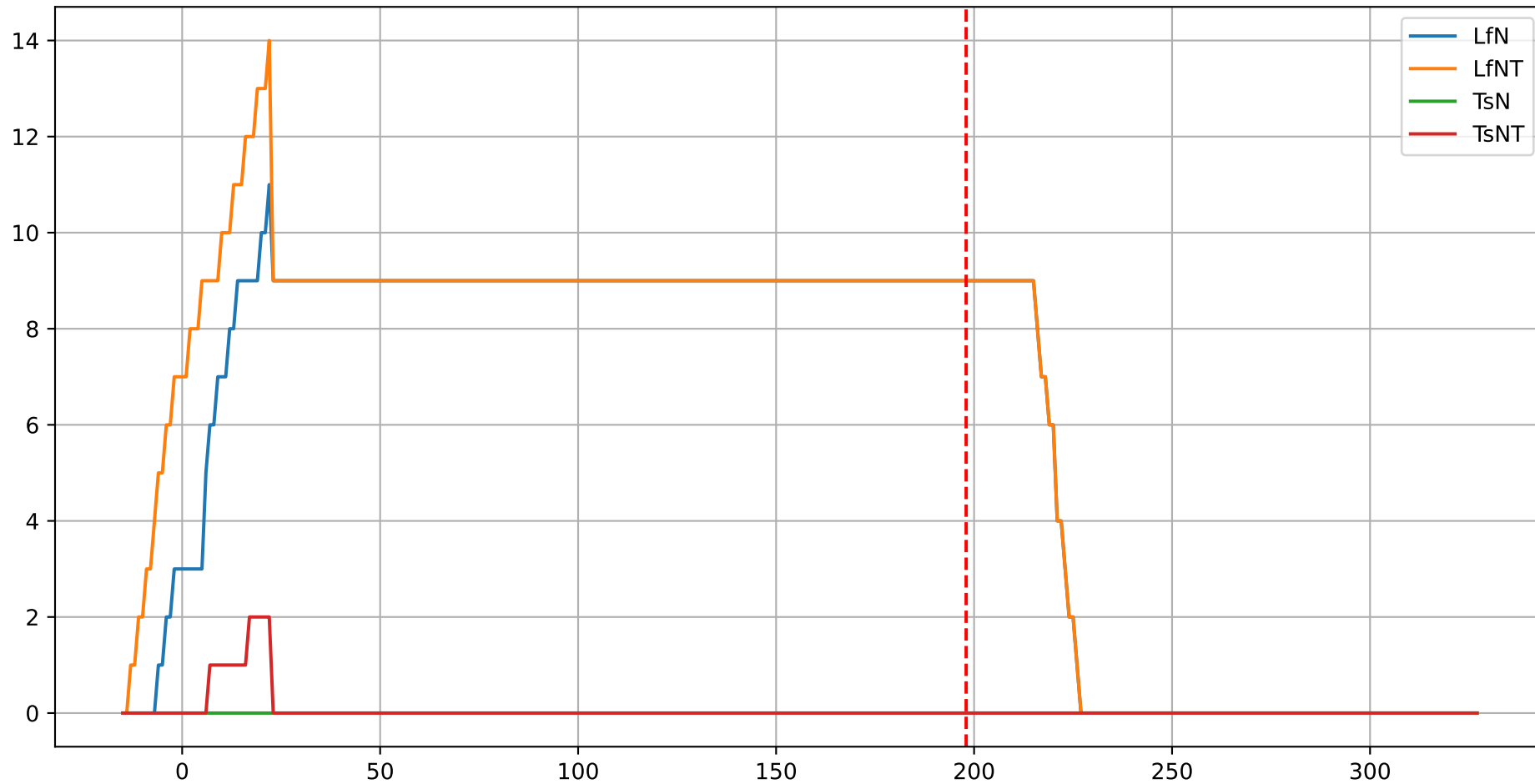
Model Prediction (P2-11)



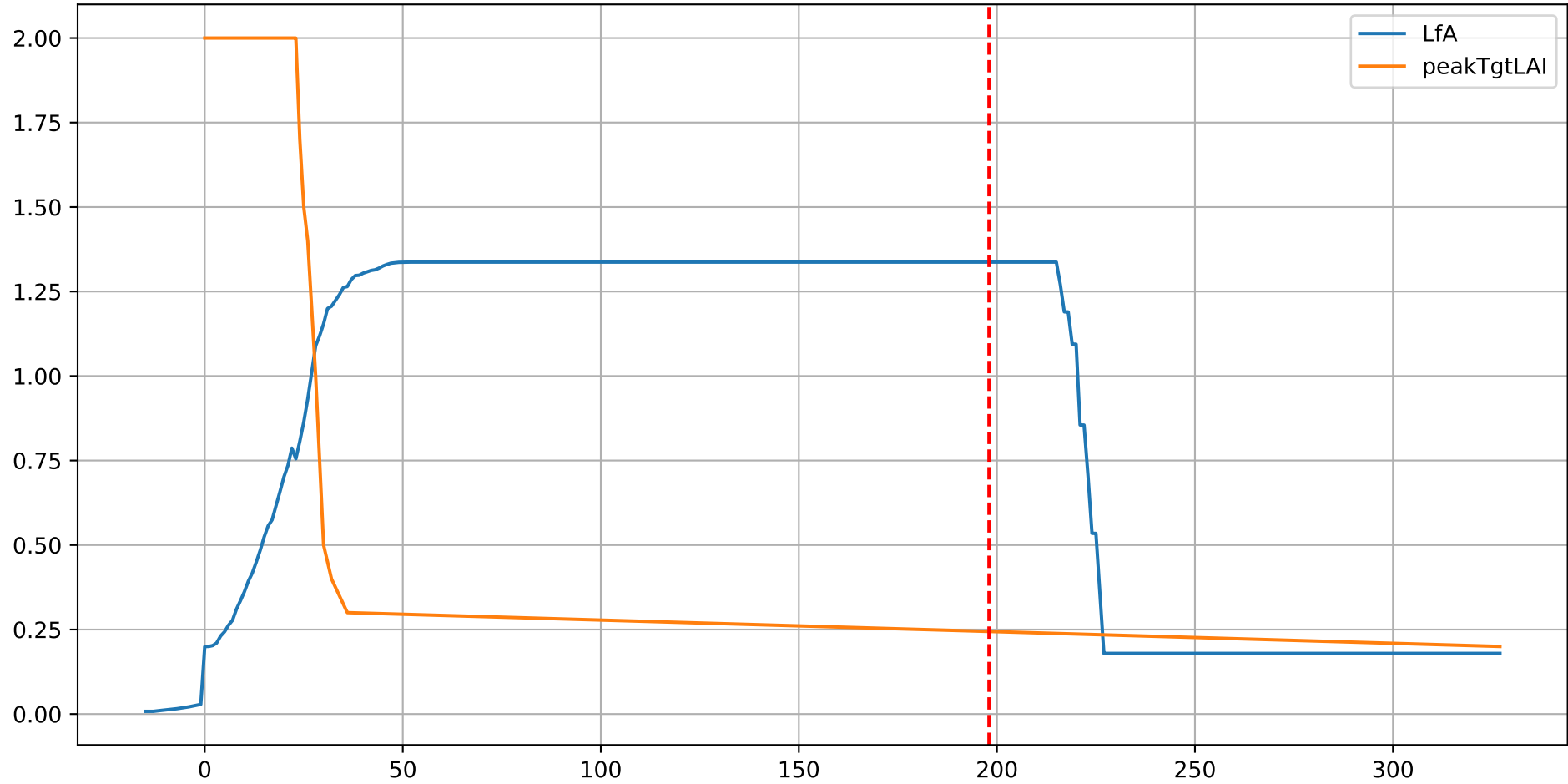
P2-11: ['LfN', 'NdN', 'TsN', 'tgtLfN', 'prunLfN']



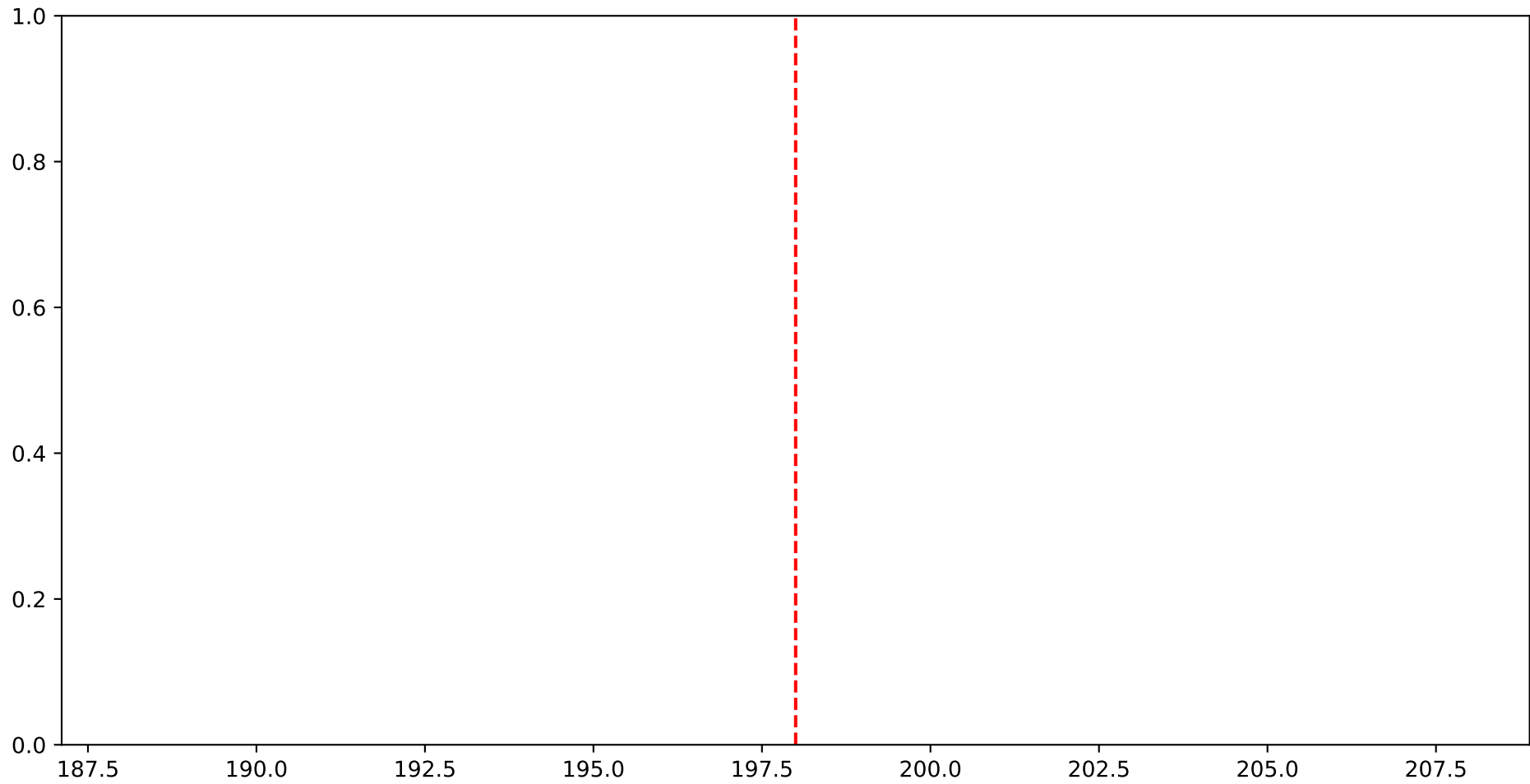
P2-11: ['LfN', 'LfNT', 'TsN', 'TsNT']



P2-11: ['LfA', 'peakTgtLAI']



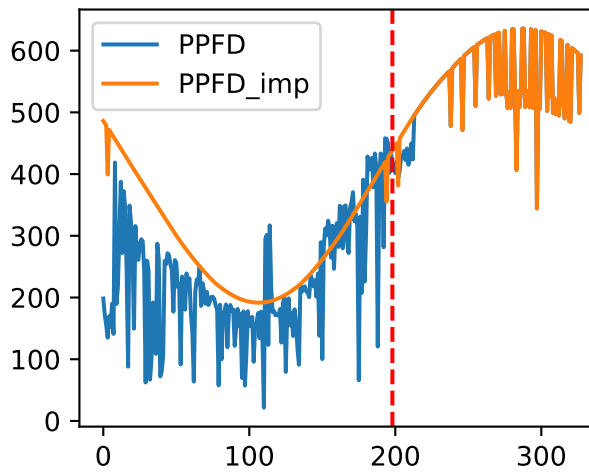
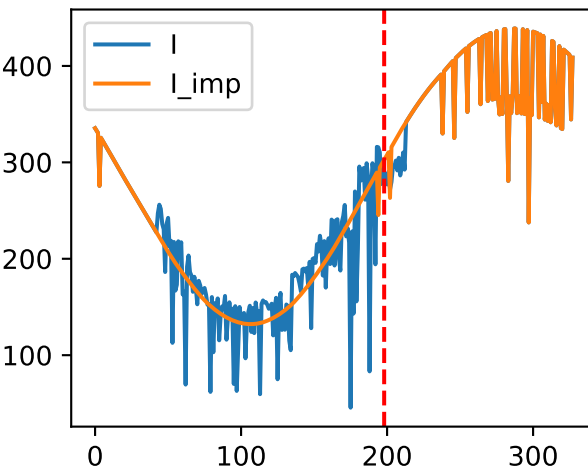
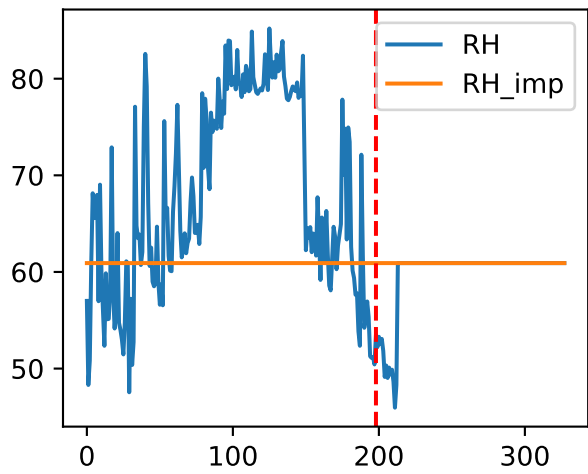
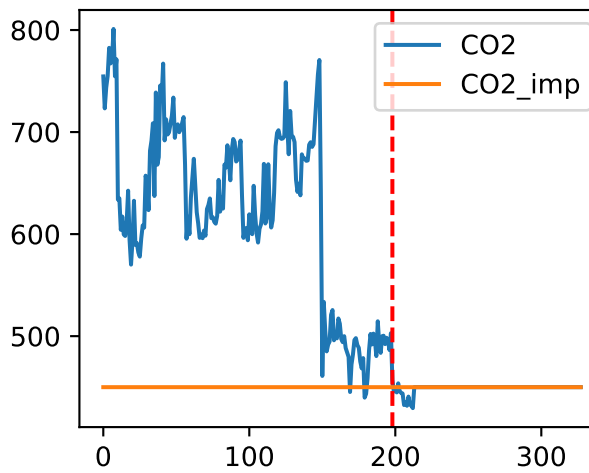
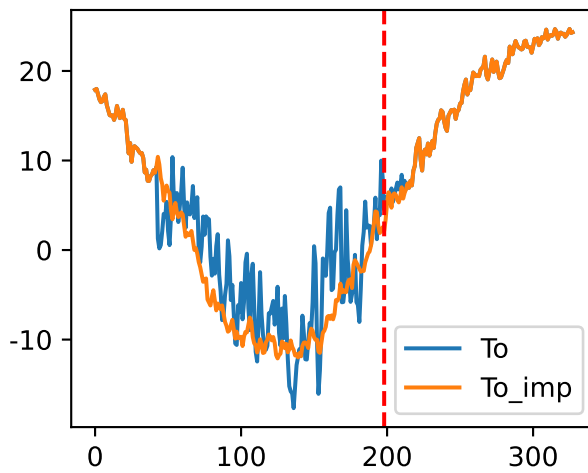
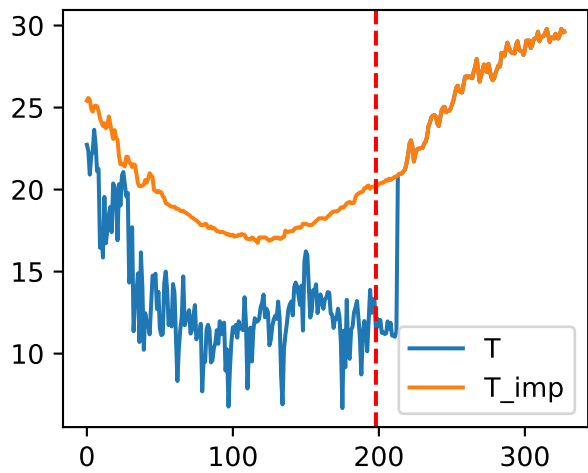
P2-11 (plot by DAT)



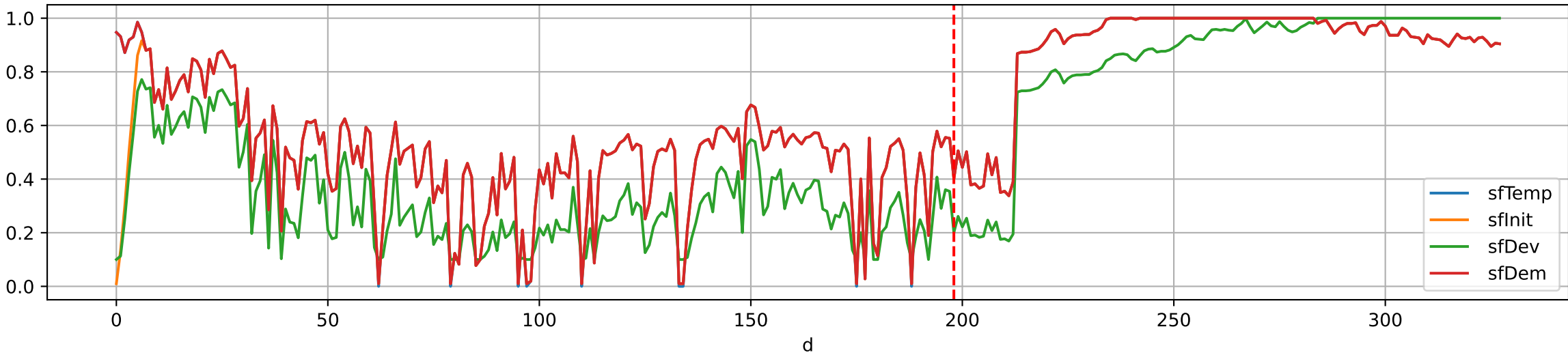
P2-11 (plot by adjDAT)



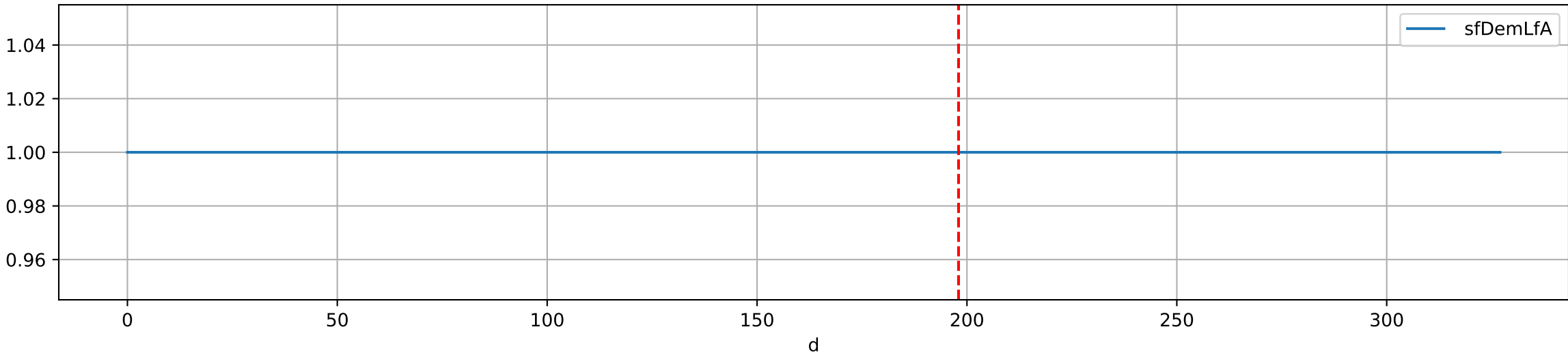
Plot Env Data



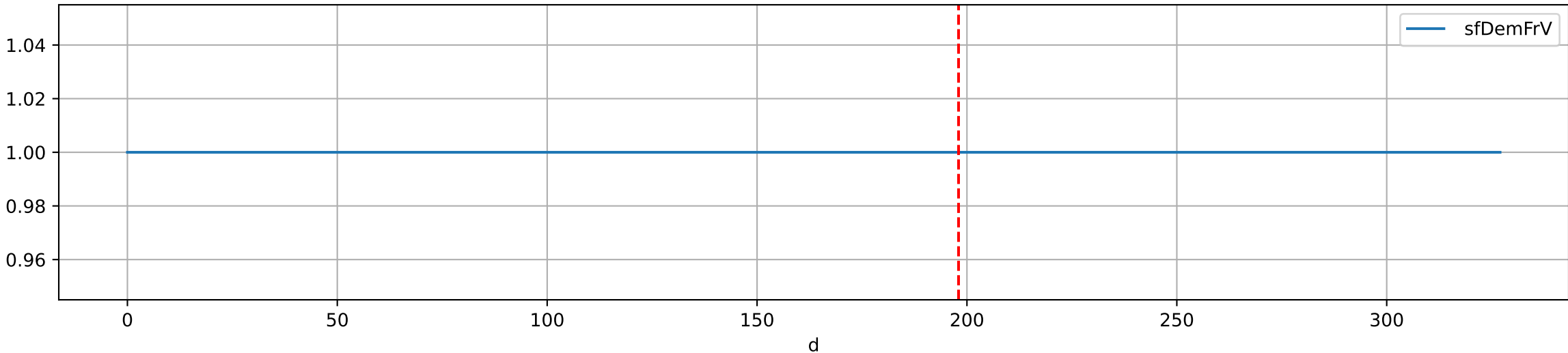
Plot [['sfTemp', 'sfInit', 'sfDev', 'sfDem']]



Plot ['sfDemLfA']



Plot ['sfDemFrV']





Plot EnvOpt Decision

