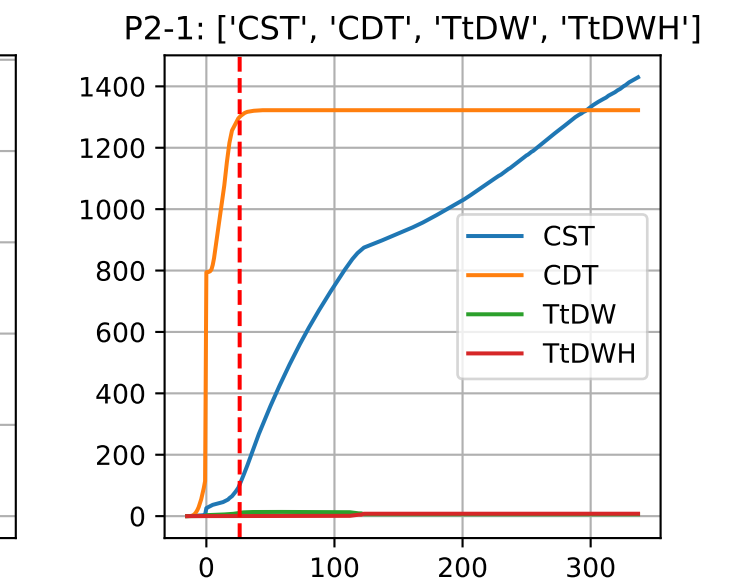
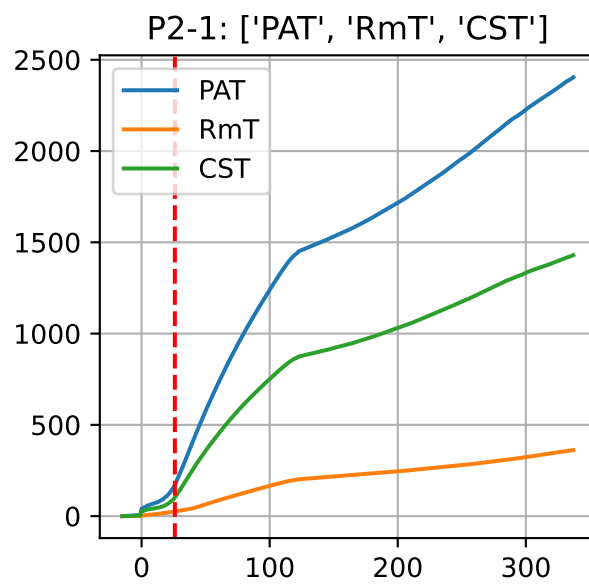
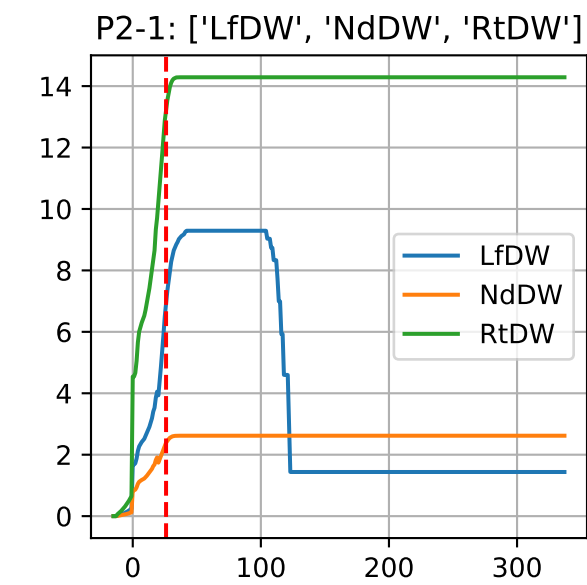
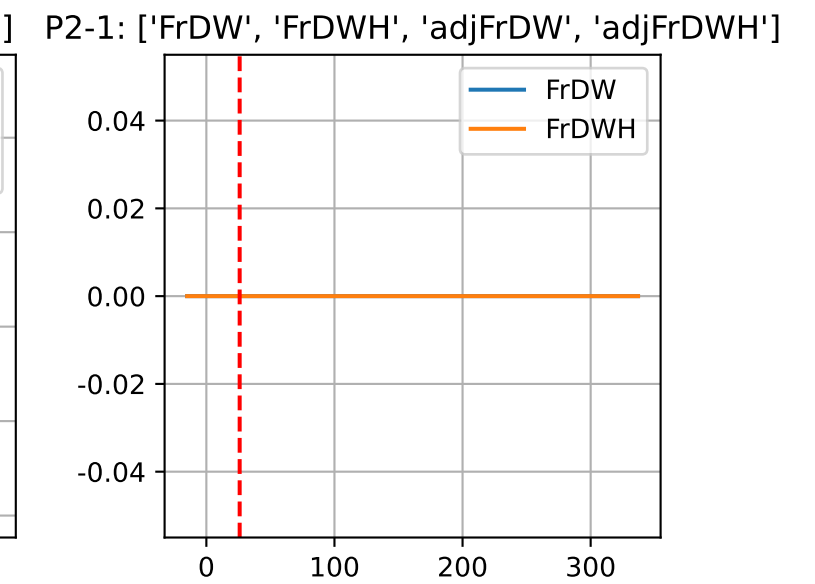
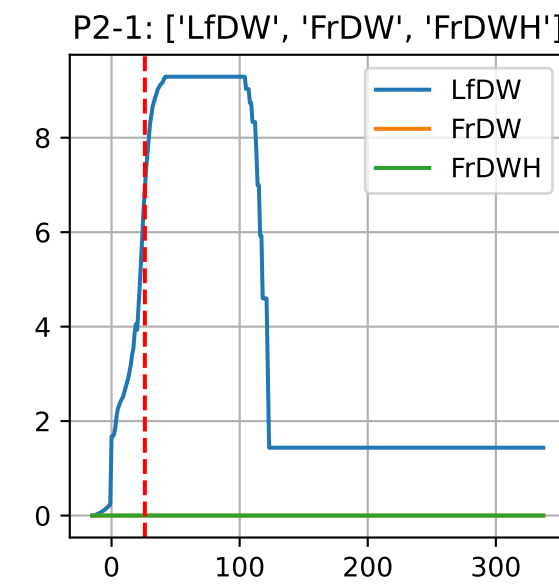
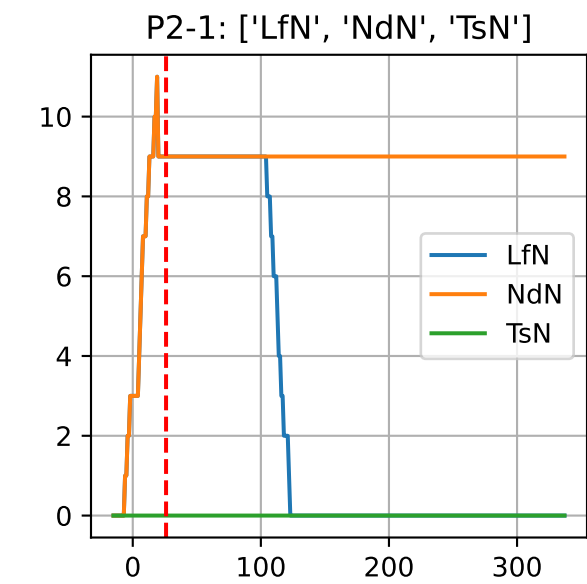
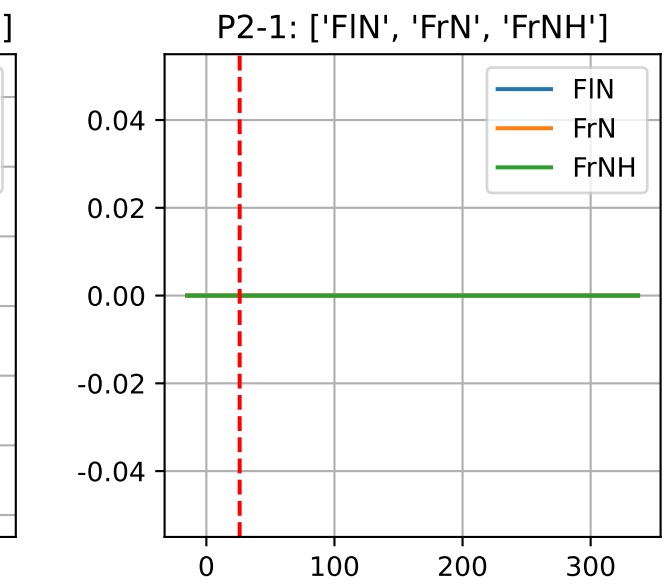
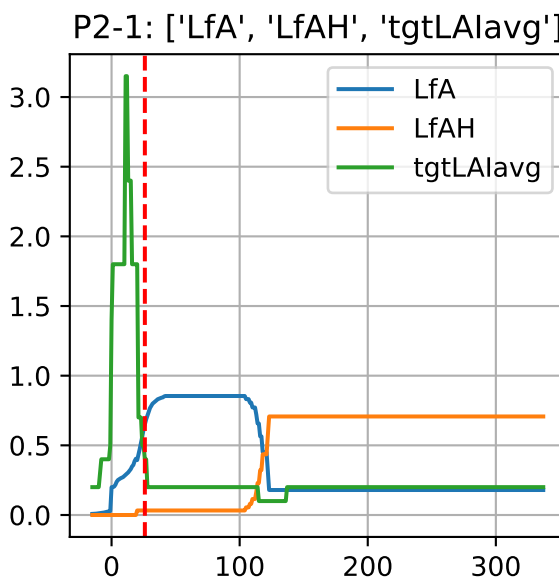
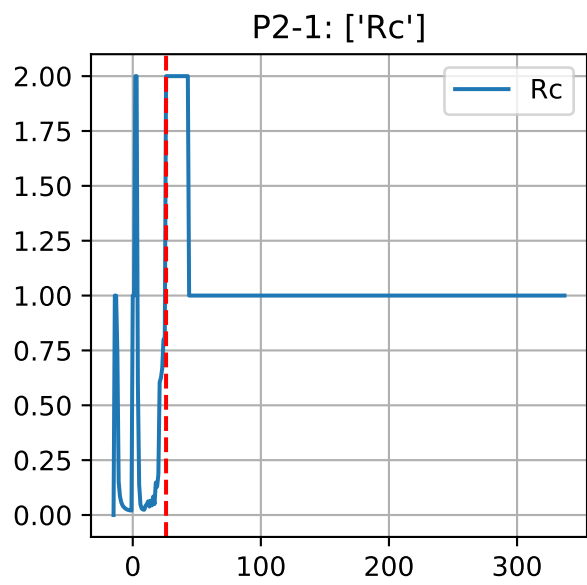
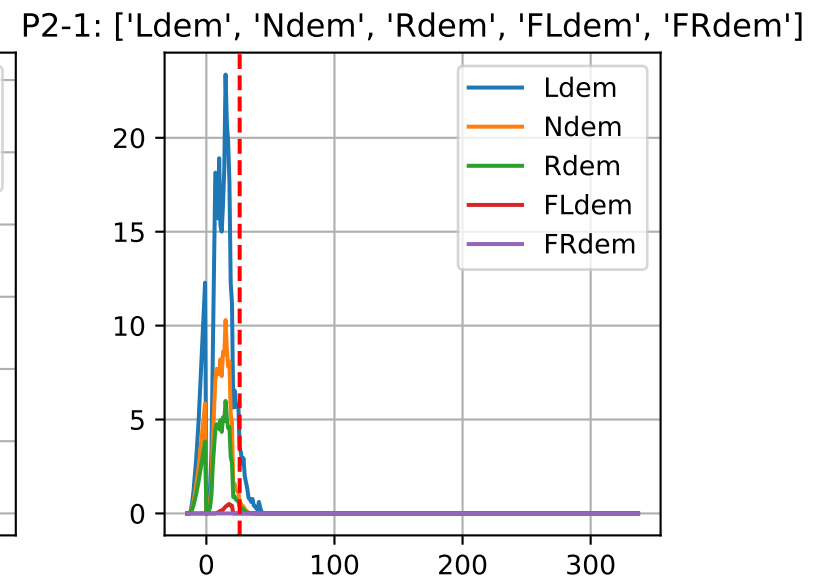
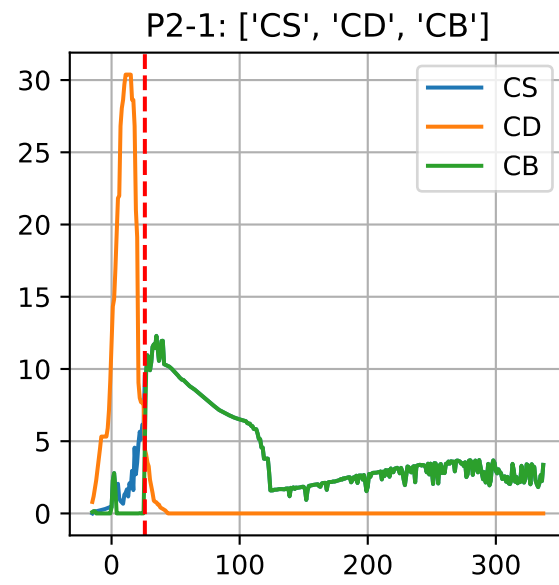
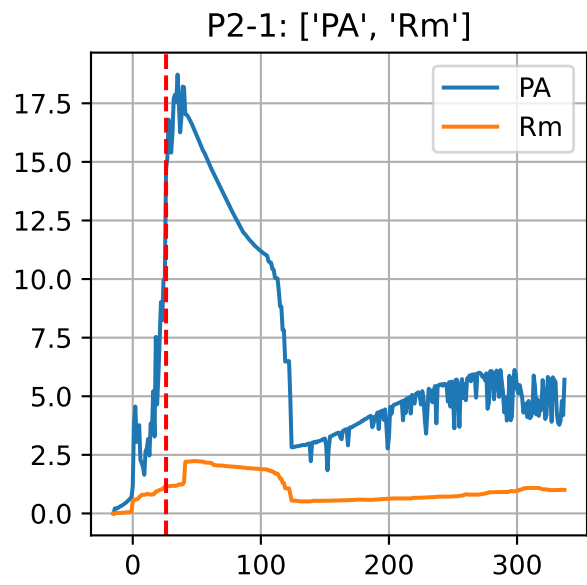
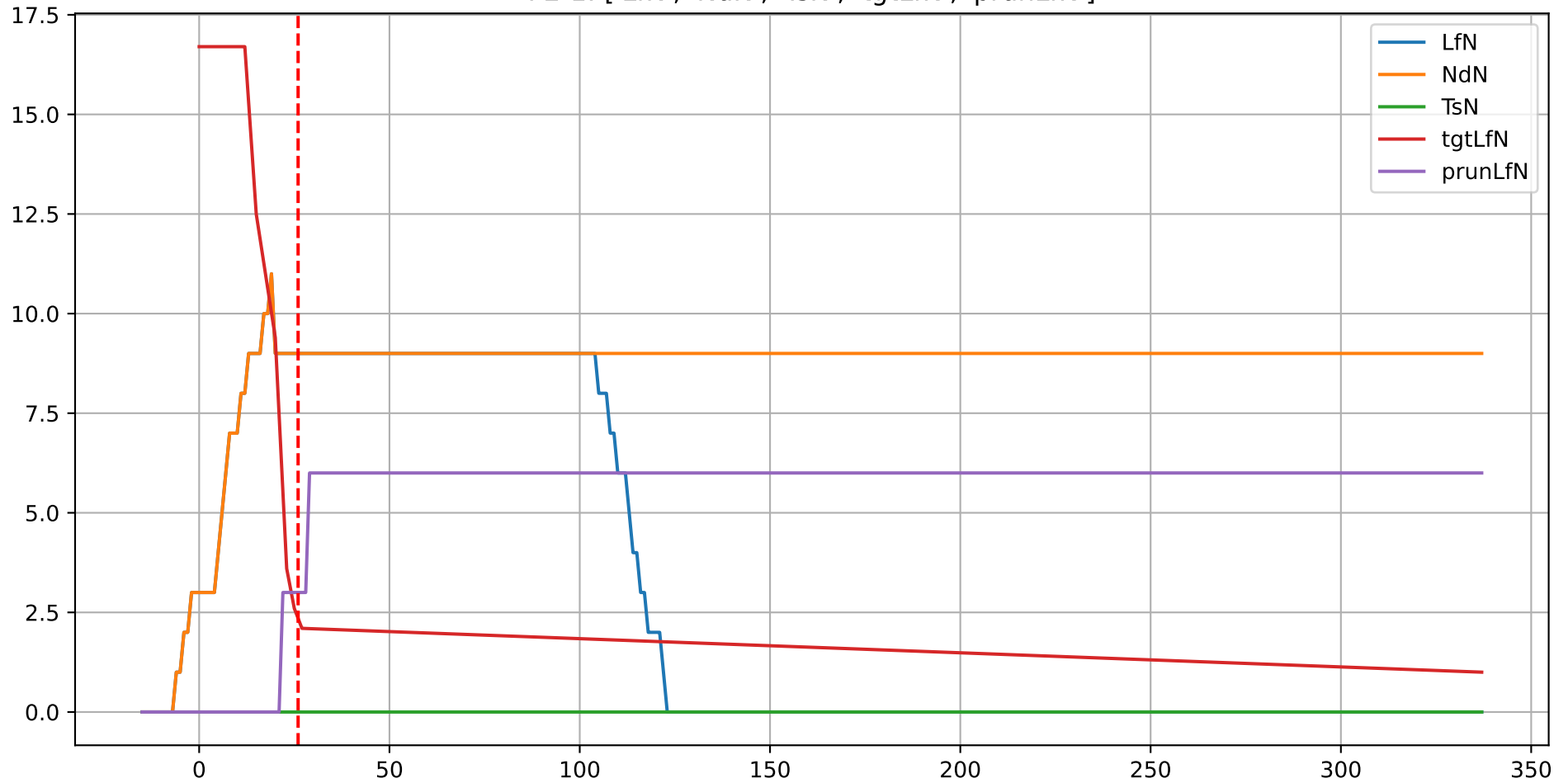


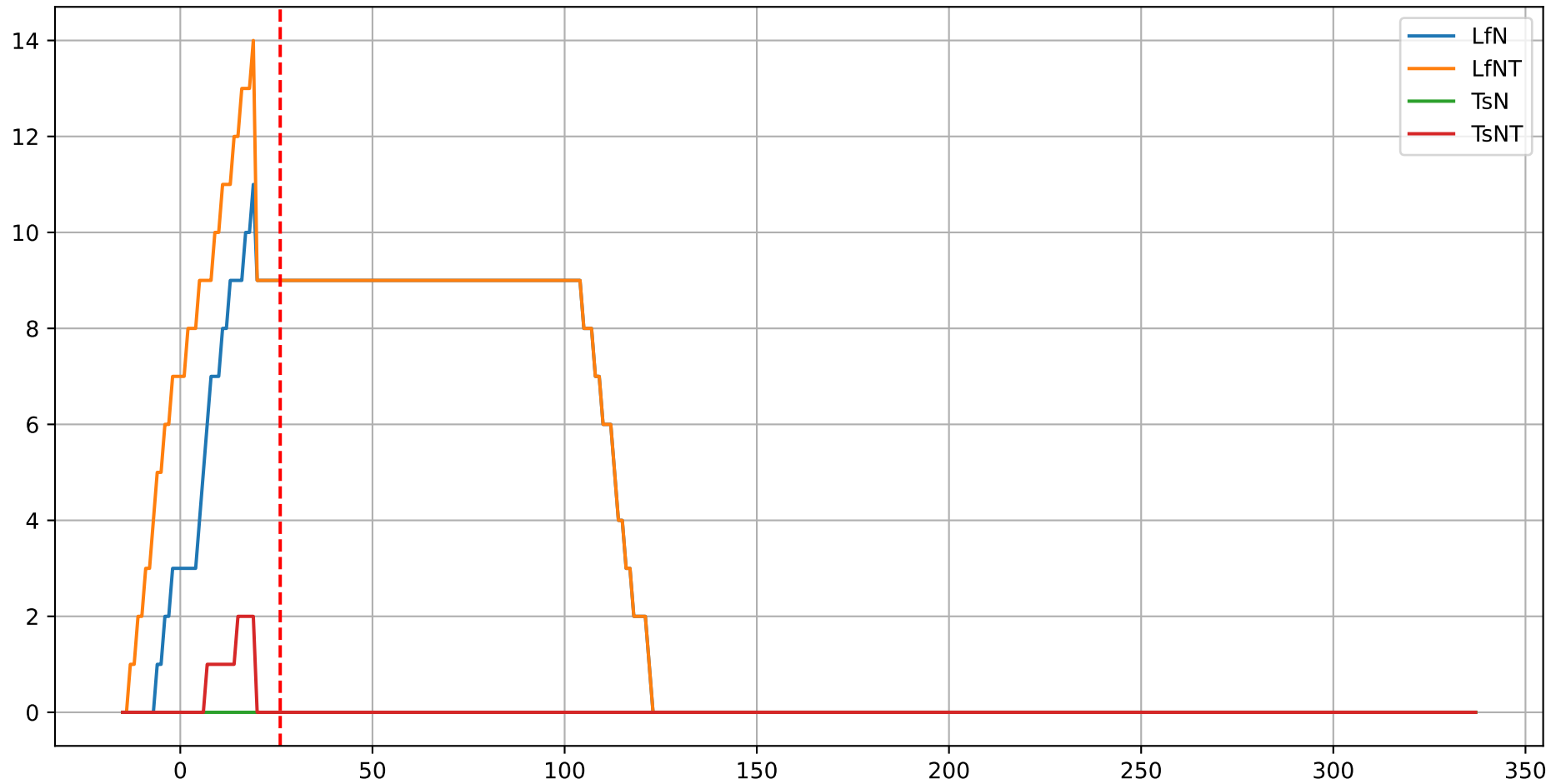
Model Prediction (P2-1)



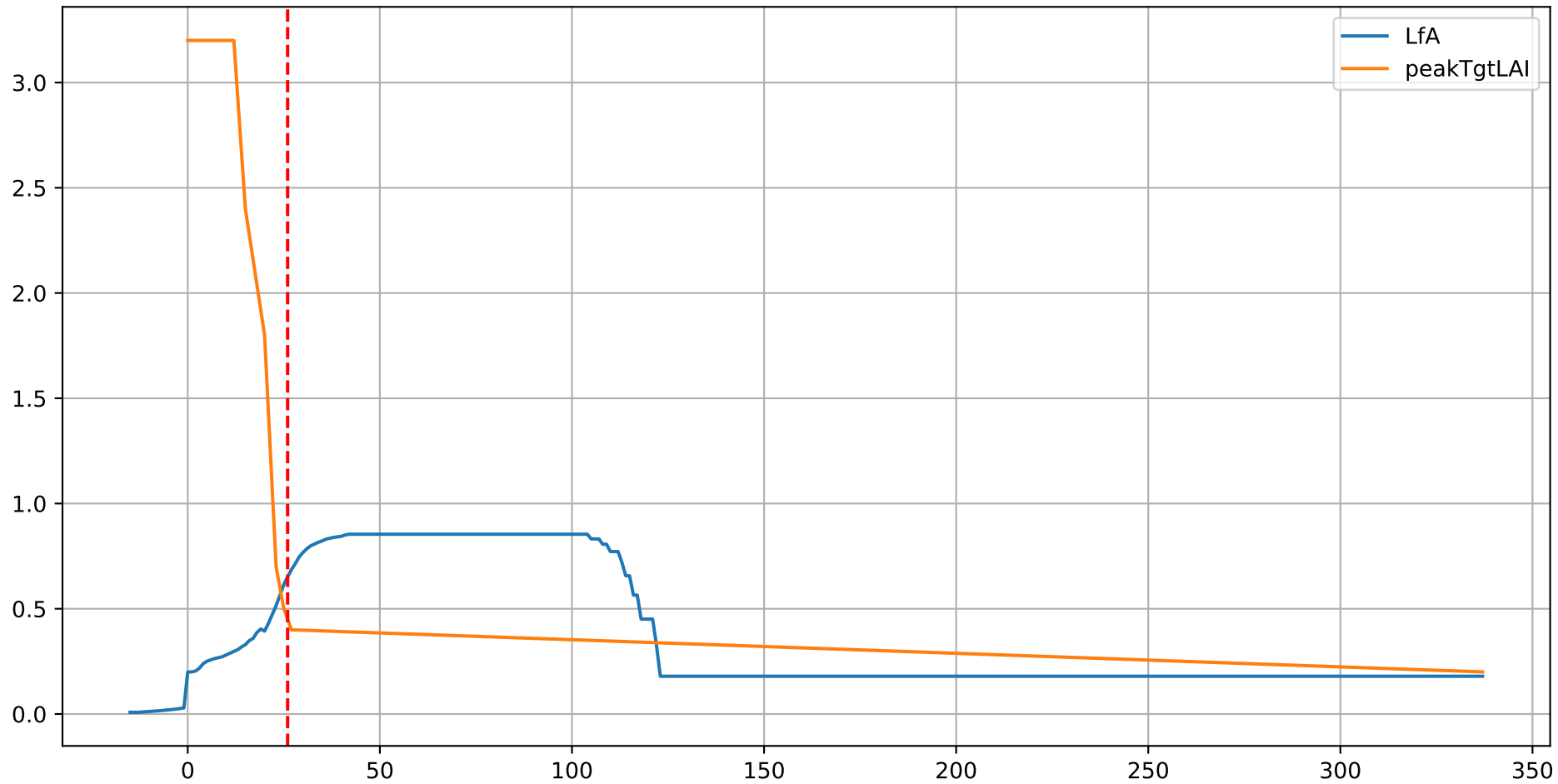
P2-1: ['LfN', 'NdN', 'TsN', 'tgtLfN', 'prunLfN']



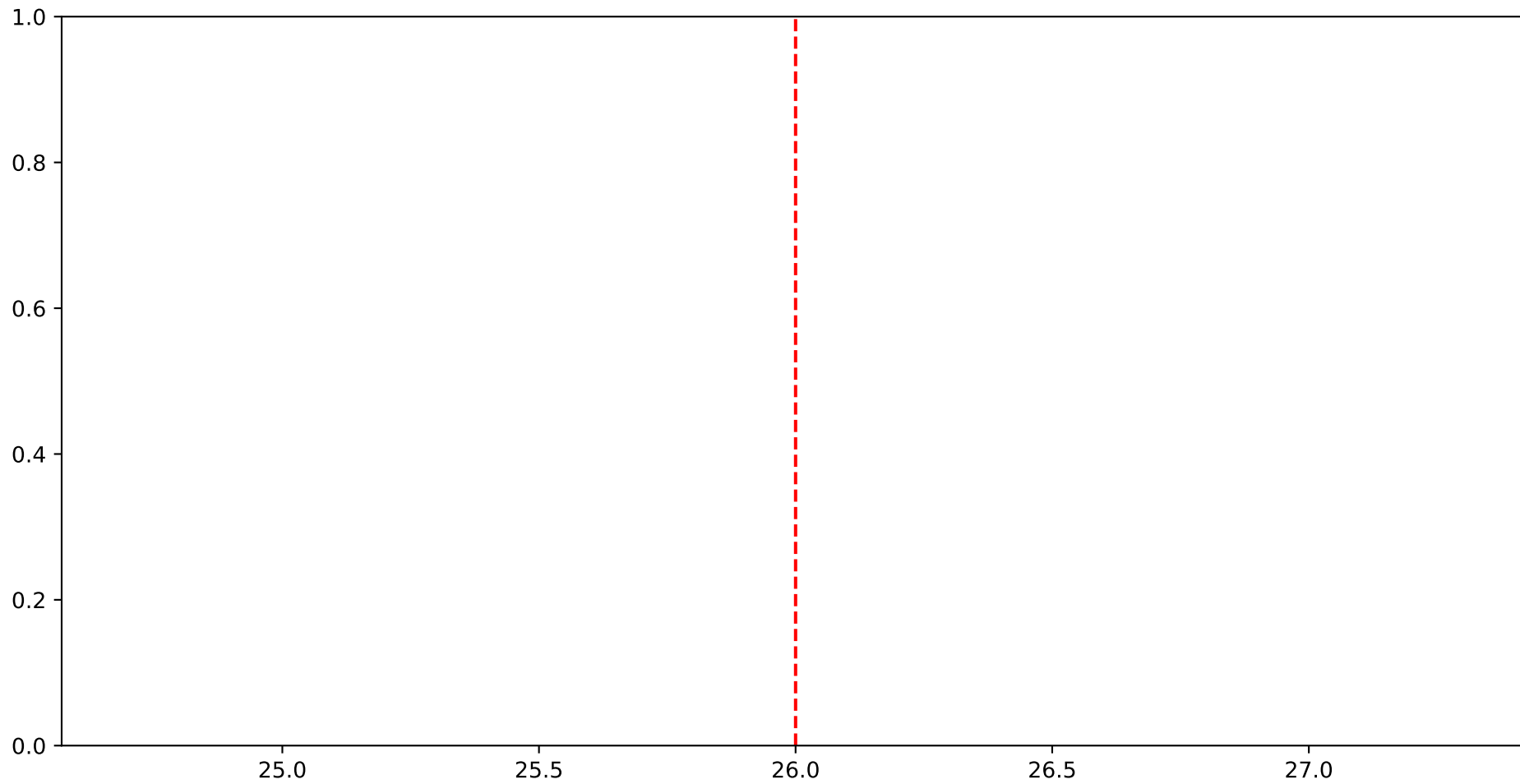
P2-1: ['LfN', 'LfNT', 'TsN', 'TsNT']



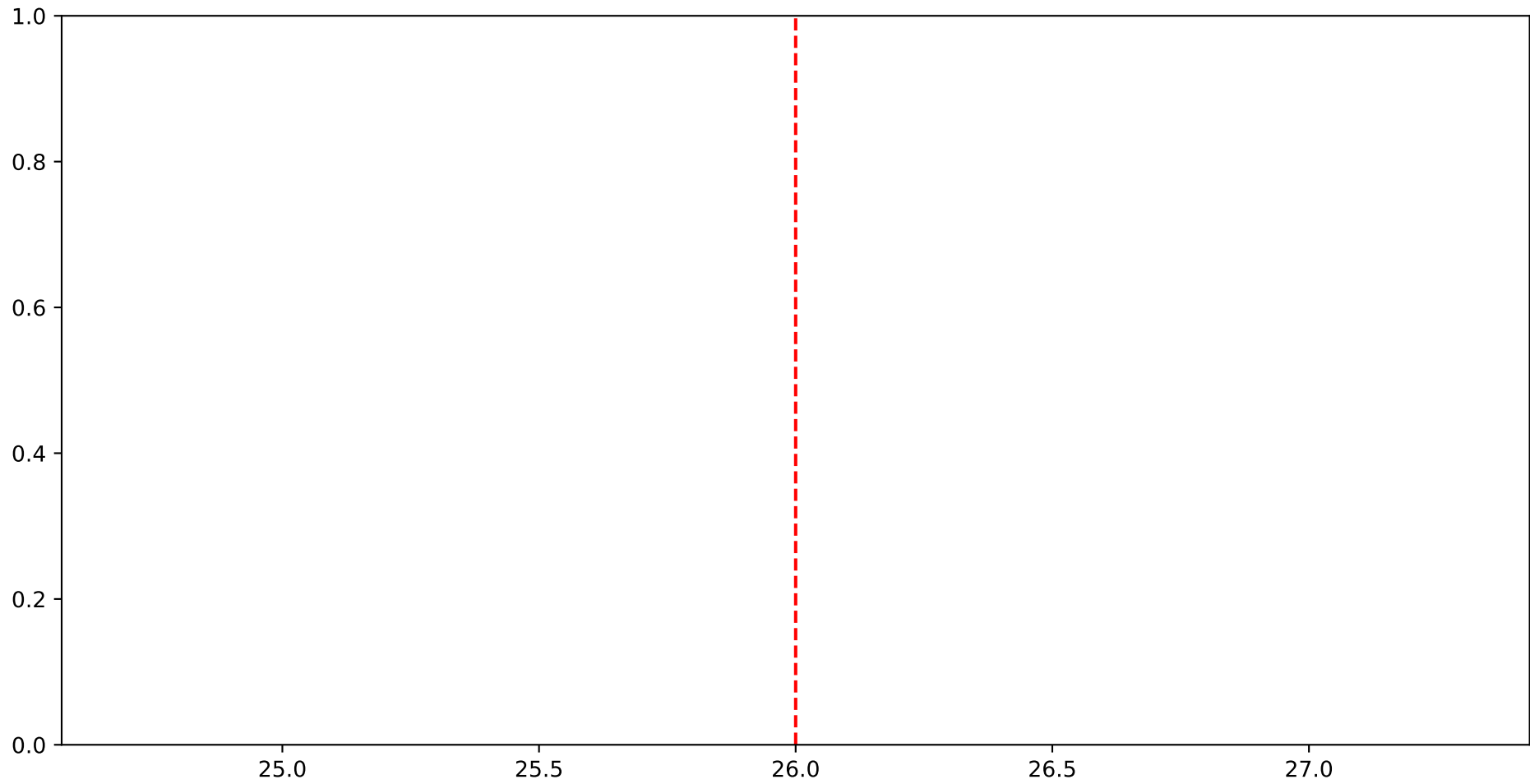
P2-1: ['LfA', 'peakTgtLAI']



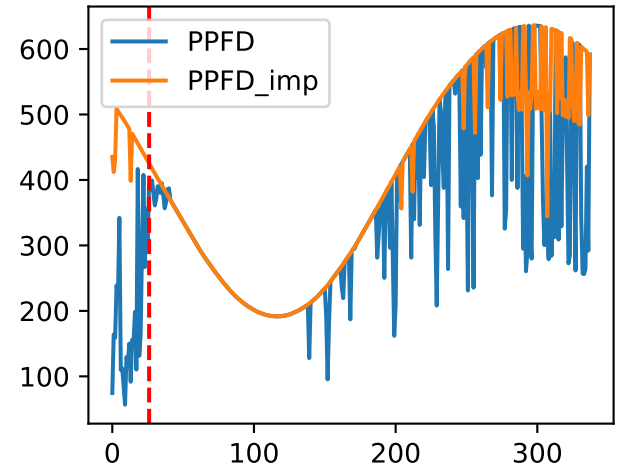
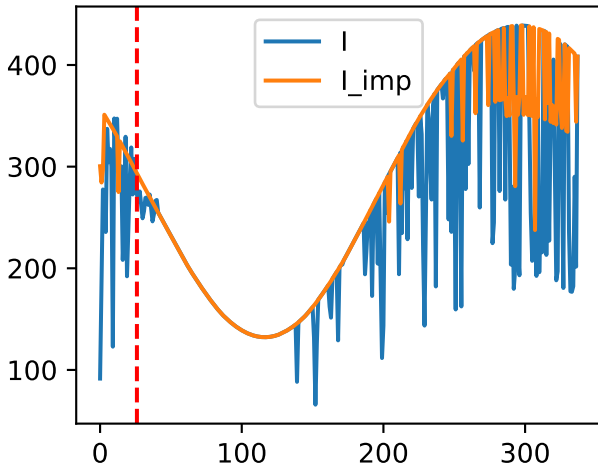
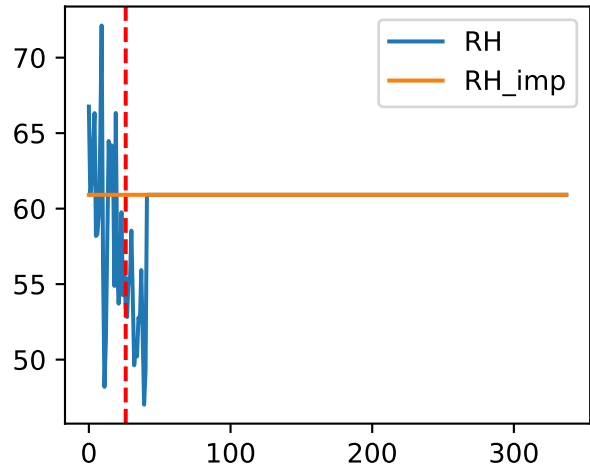
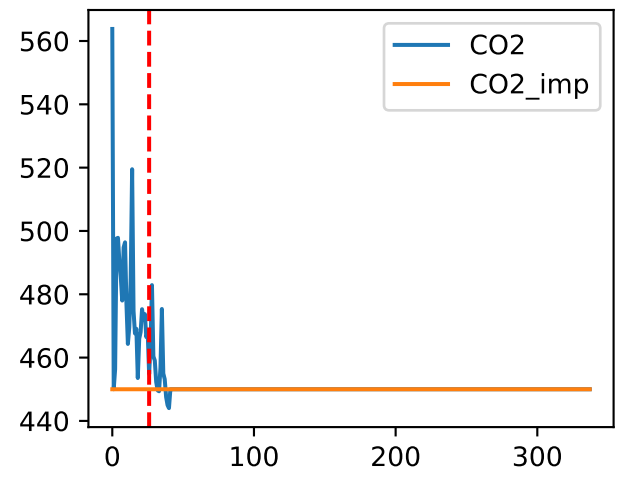
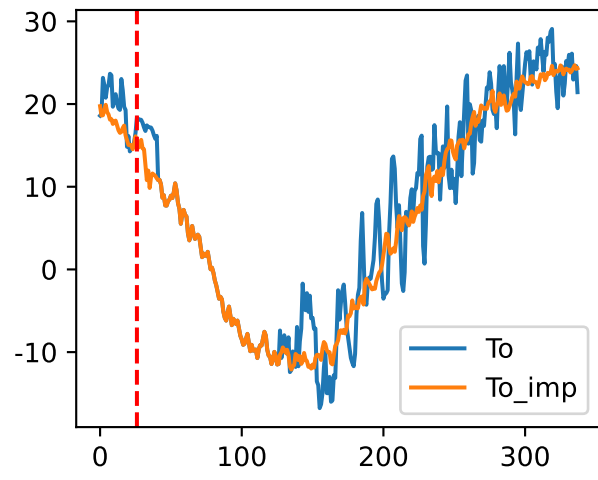
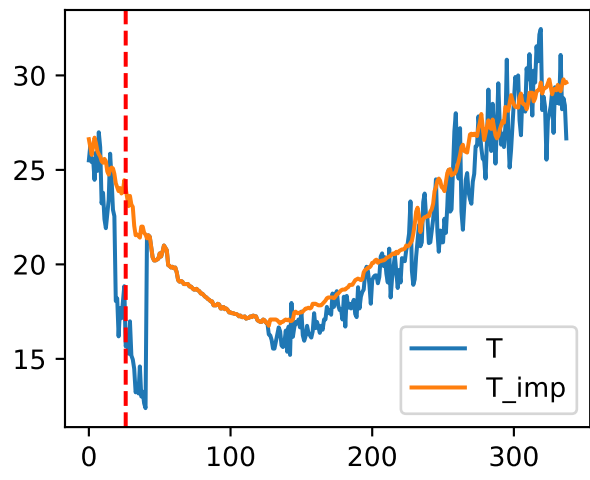
P2-1 (plot by DAT)



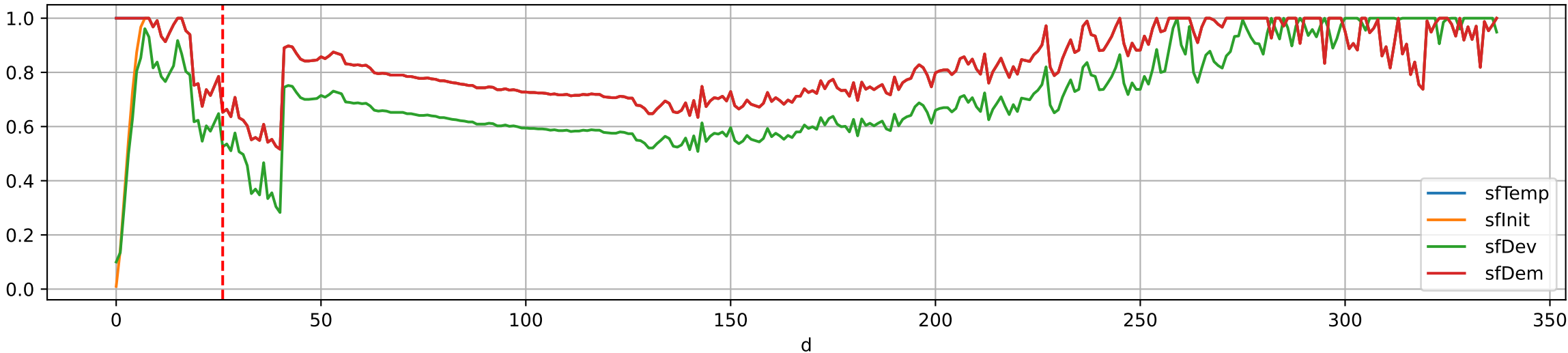
P2-1 (plot by adjDAT)



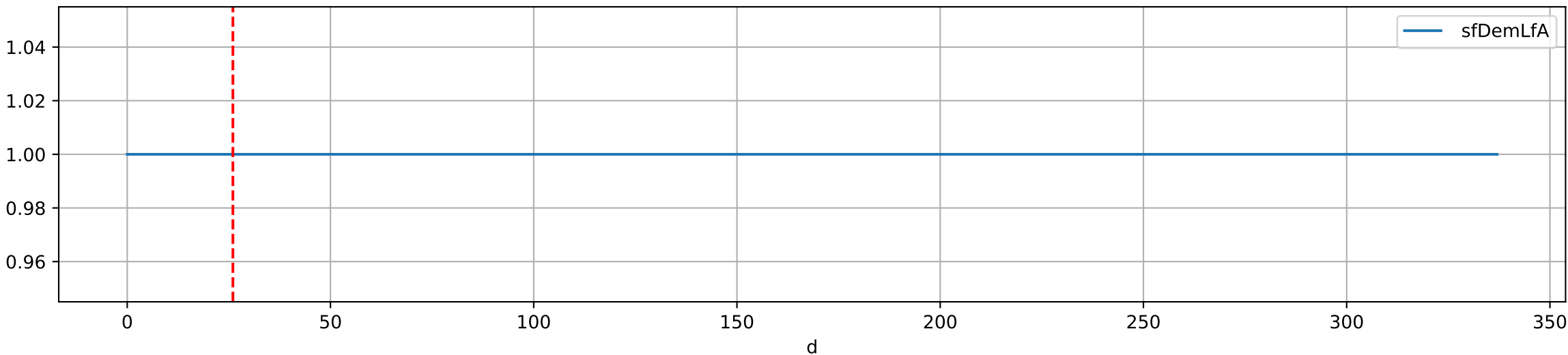
Plot Env Data



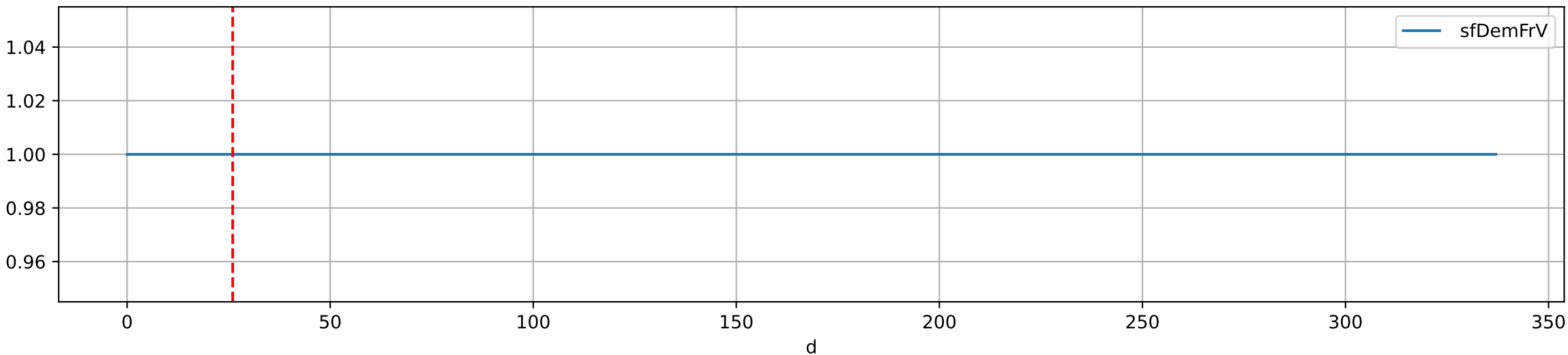
Plot [['sfTemp', 'sfInIt', 'sfDev', 'sfDem']]



Plot ['sfDemLfA']



Plot ['sfDemFrV']



Plot EnvOpt Decision

