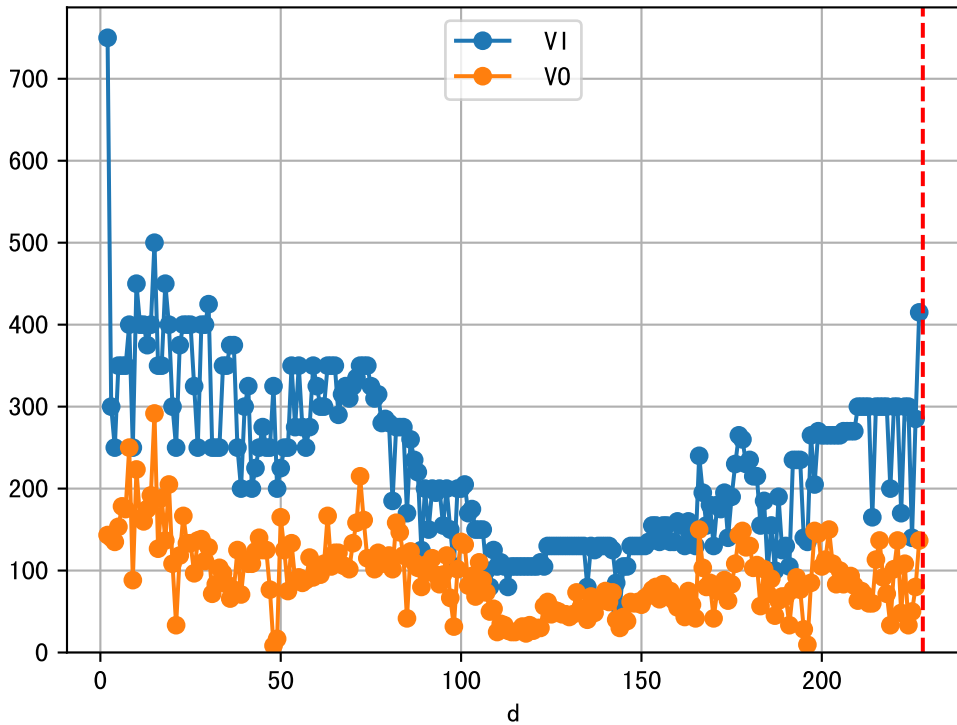
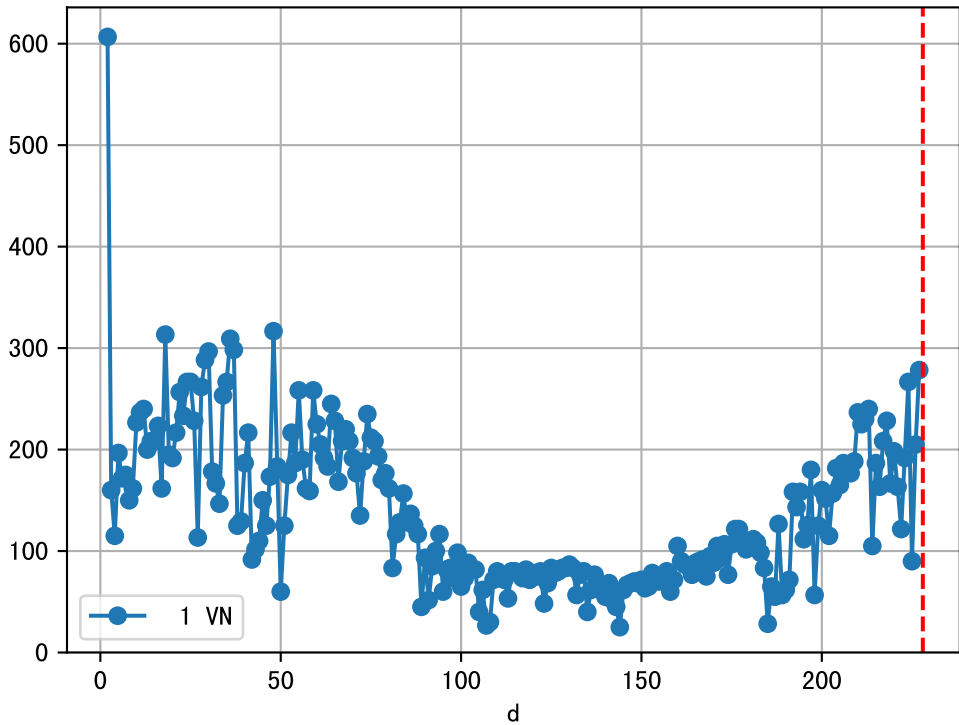
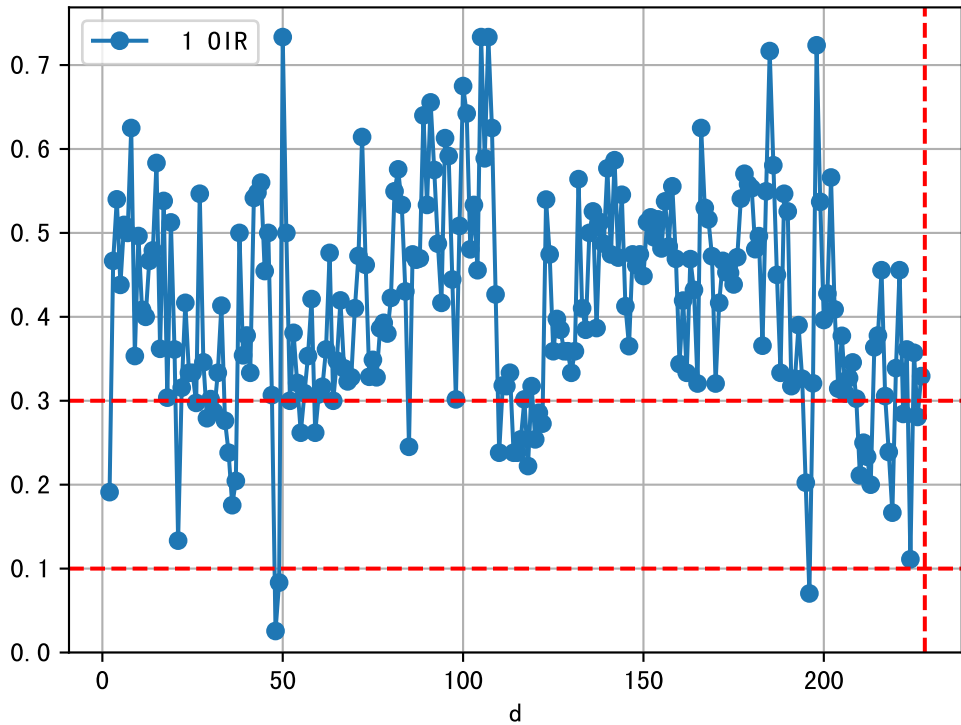


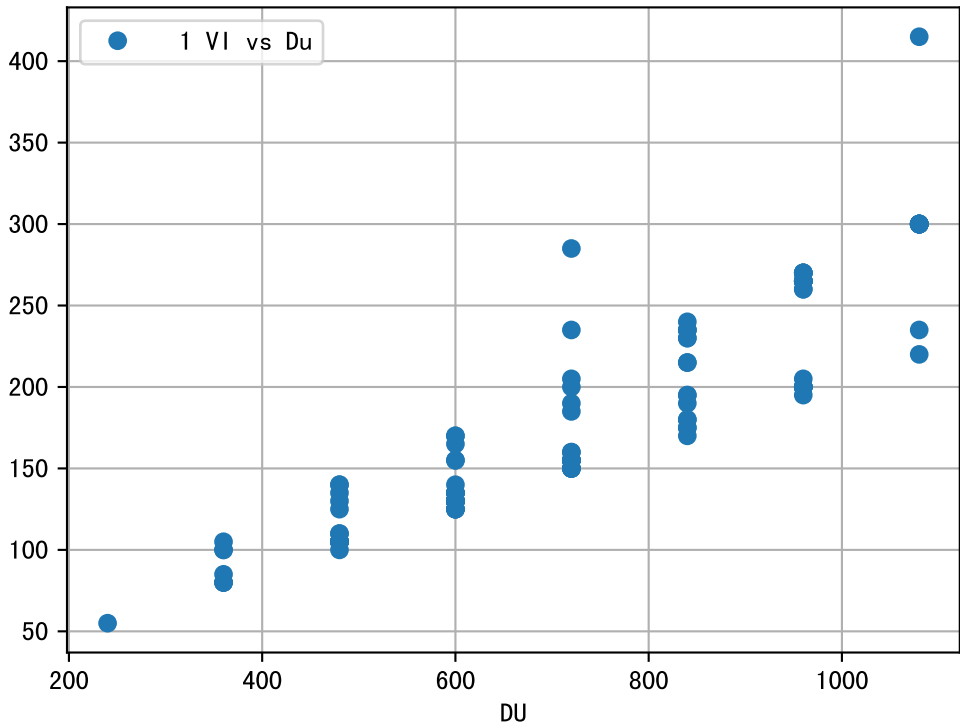
FgArea: [' 0']
NC11 P2-2
2026-04-12 (Day 228)

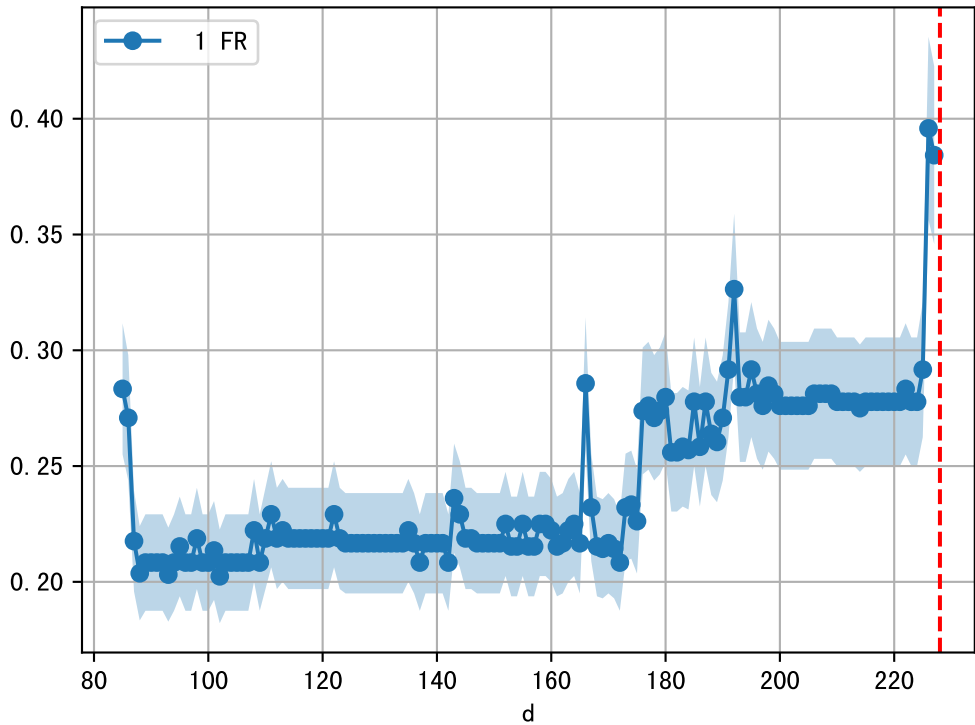
fgNum 1 (at_row = 52.0)

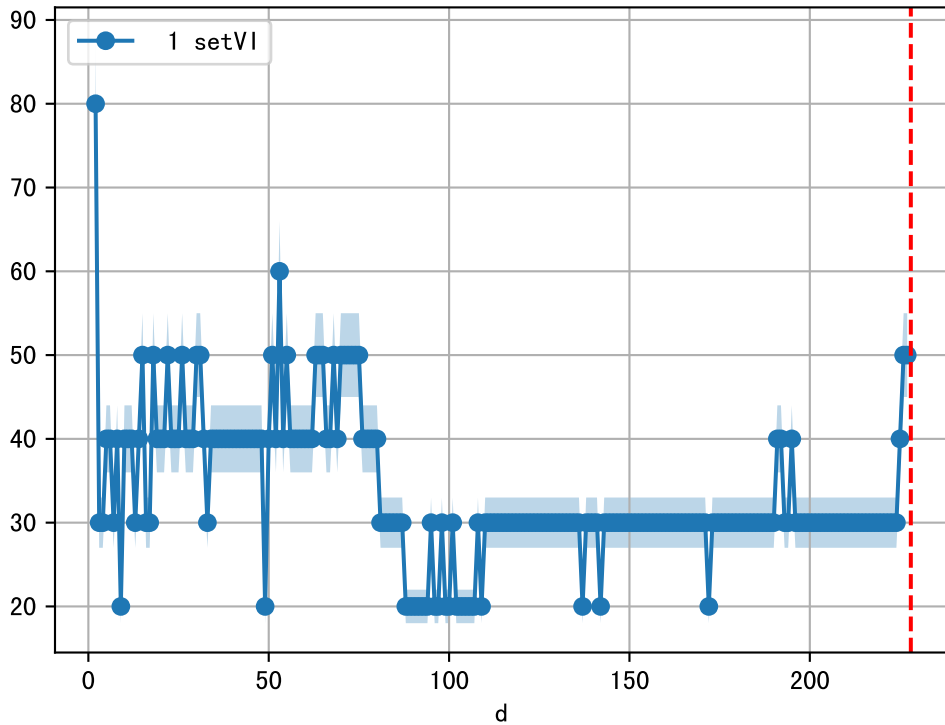




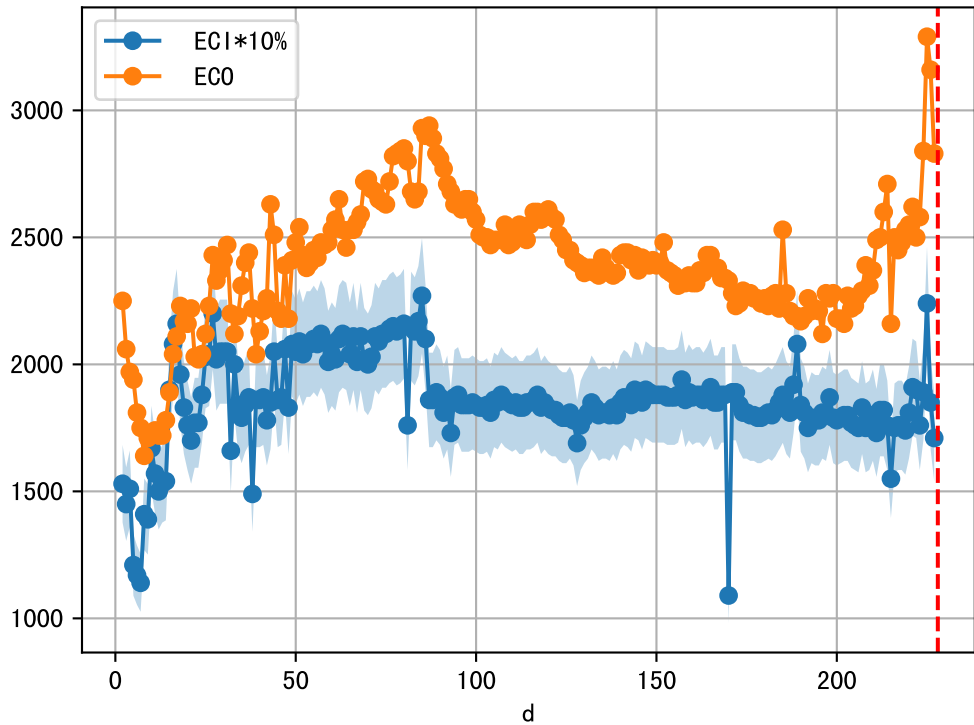


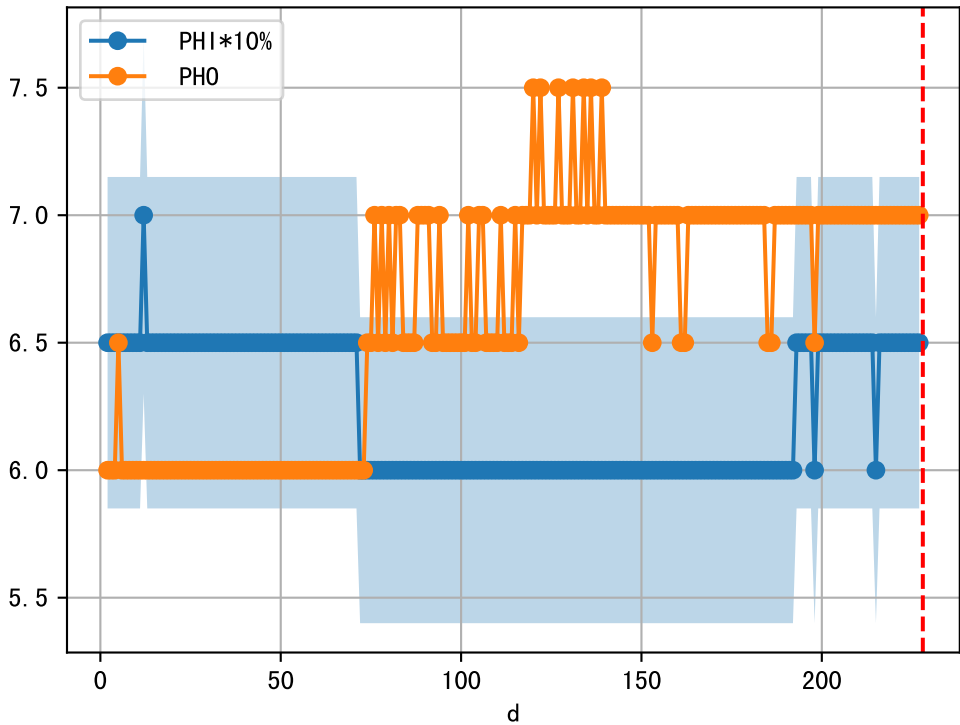




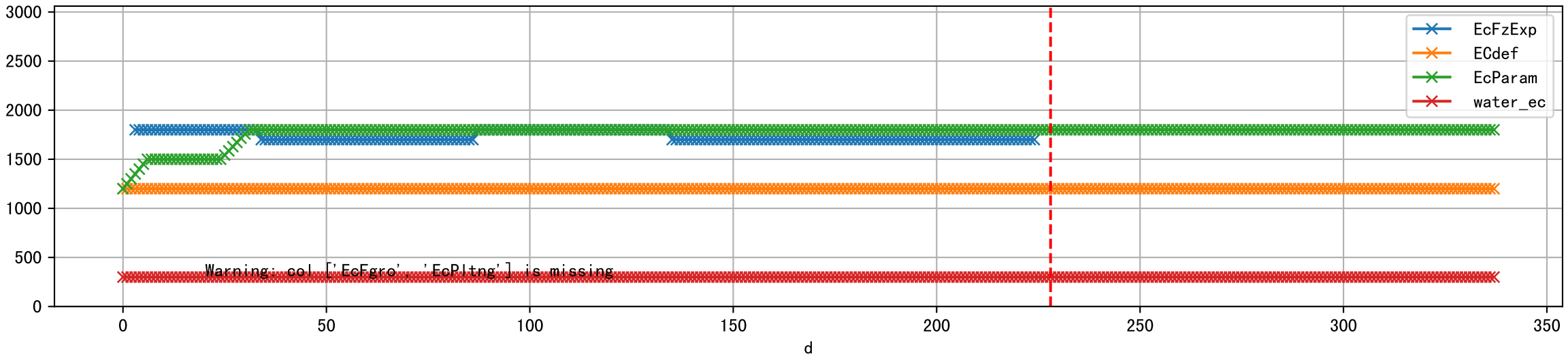


1 (fgArea = NA)

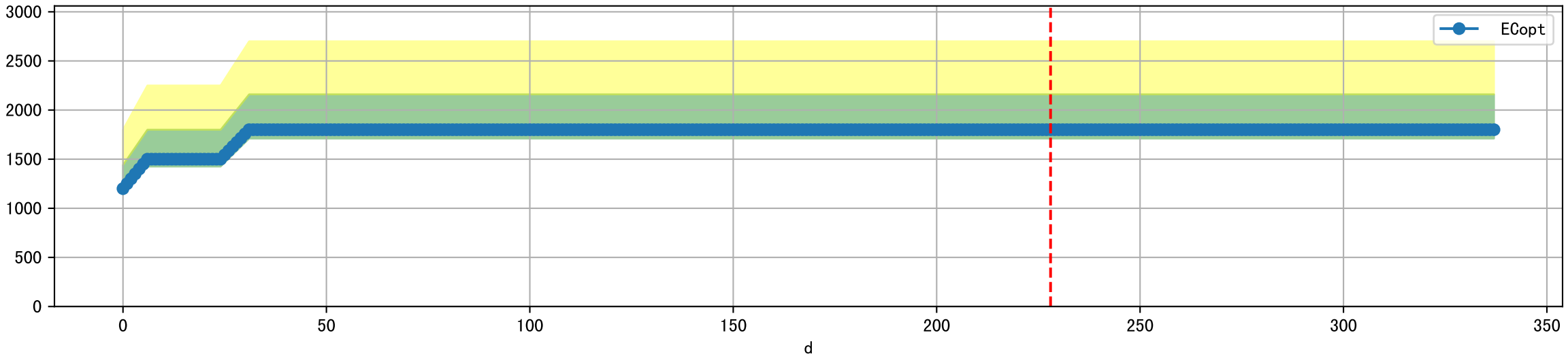




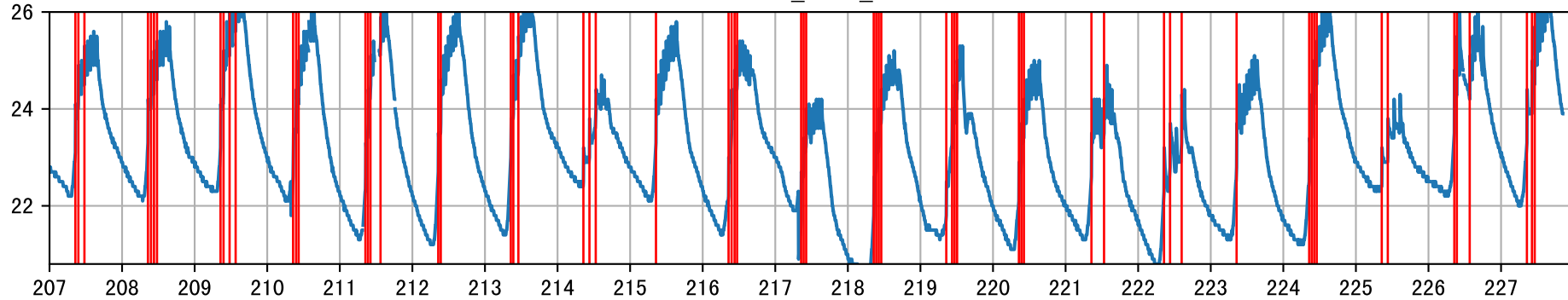
Plot [['EcFgro', 'EcFzExp', 'EcPltng', 'ECdef', 'EcParam', 'water_ec']]



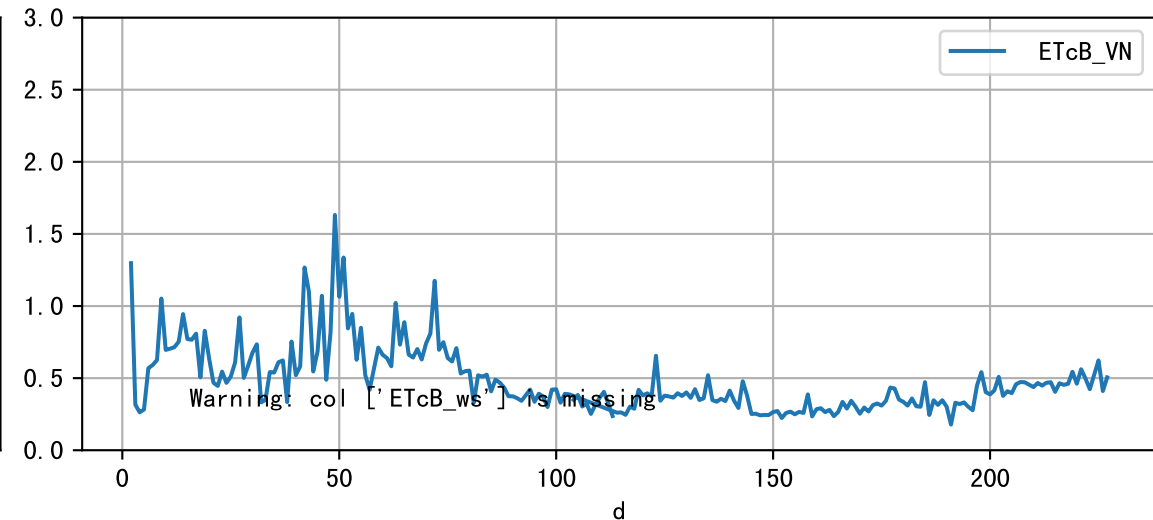
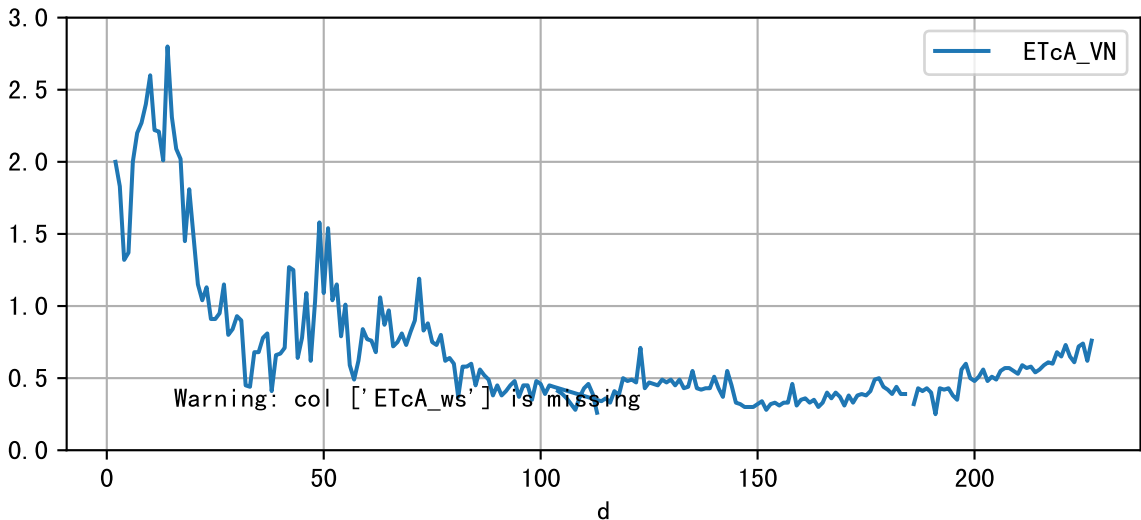
Plot [' ECopt']



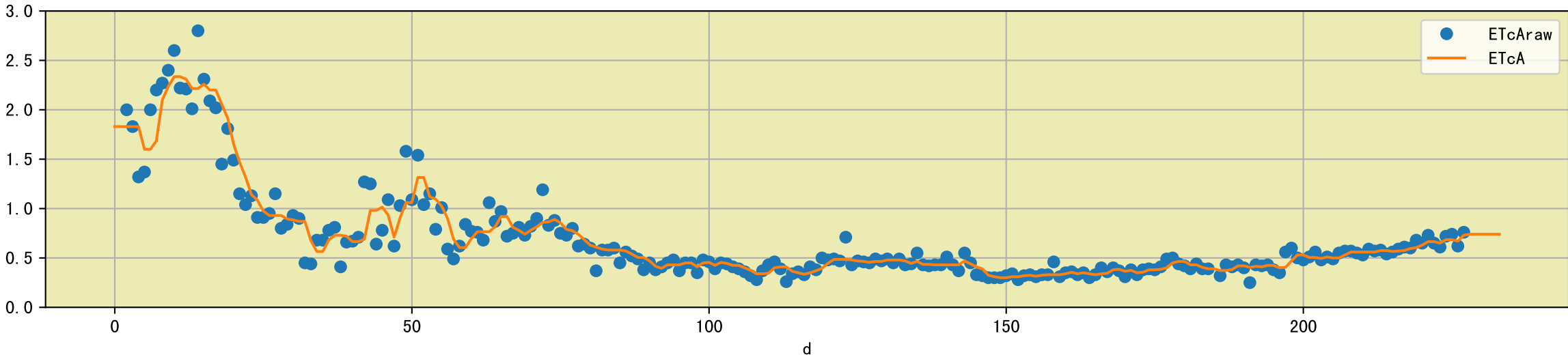
P2-2_0: M_1



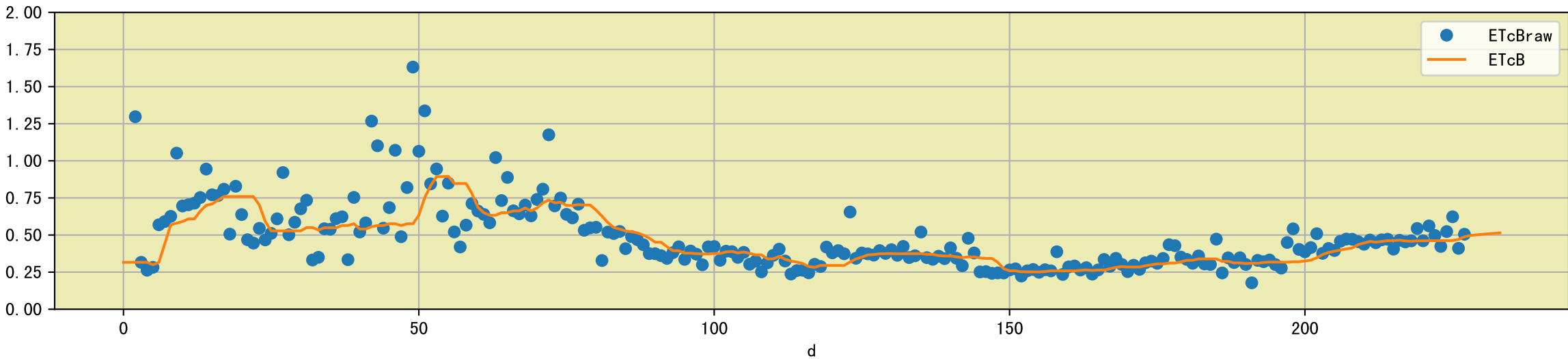
Plot [['ETcA_VN', 'ETcA_ws'], ['ETcB_VN', 'ETcB_ws']]

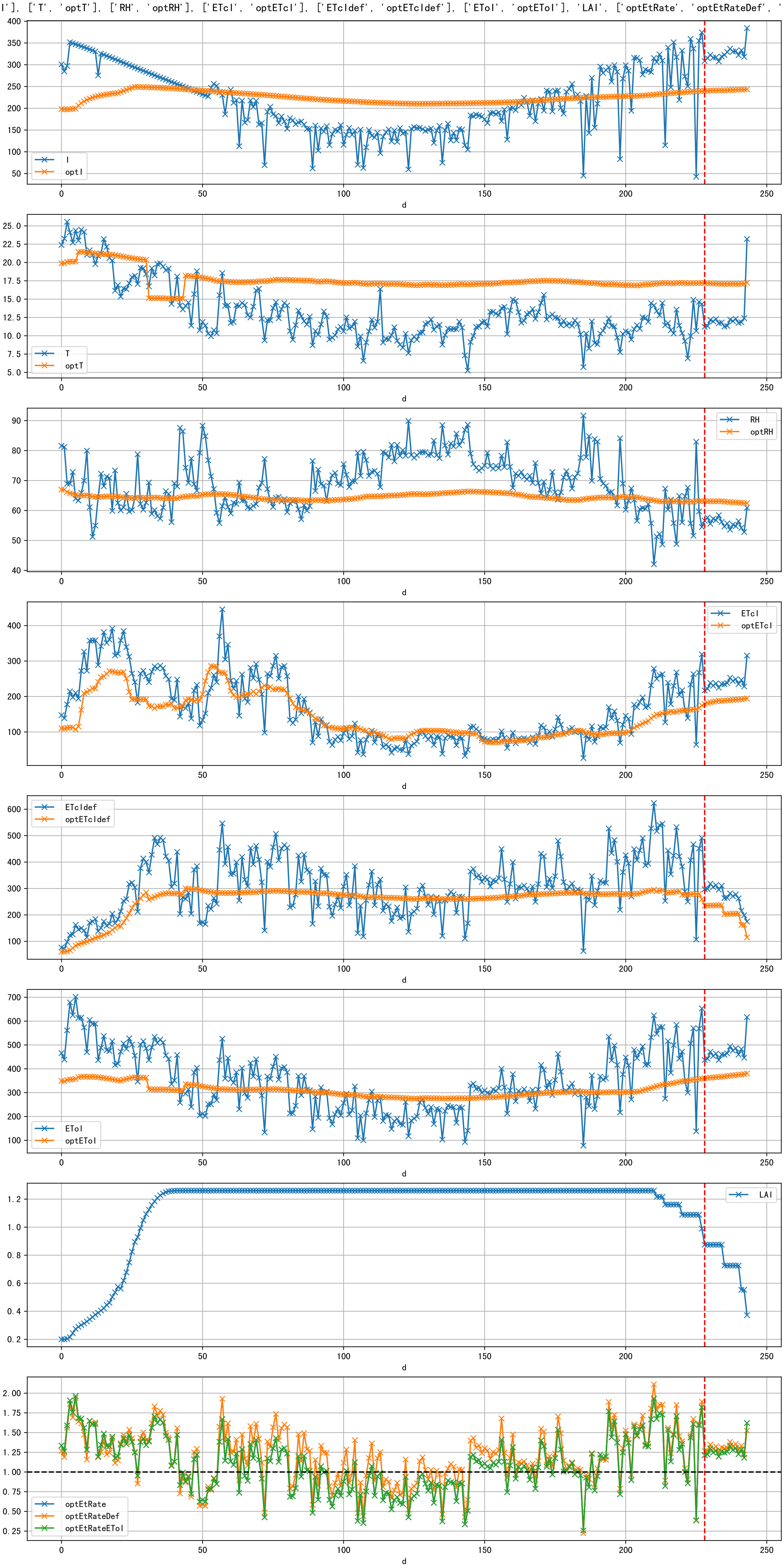


Plot [['ETcAraw:o', 'ETcA']]

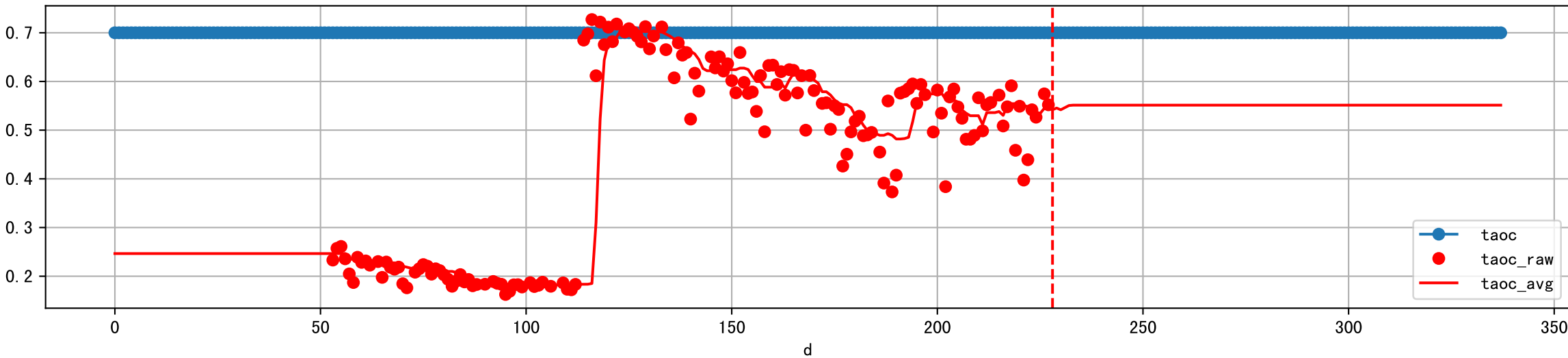


Plot [['ETcBraw:o', 'ETcB']]

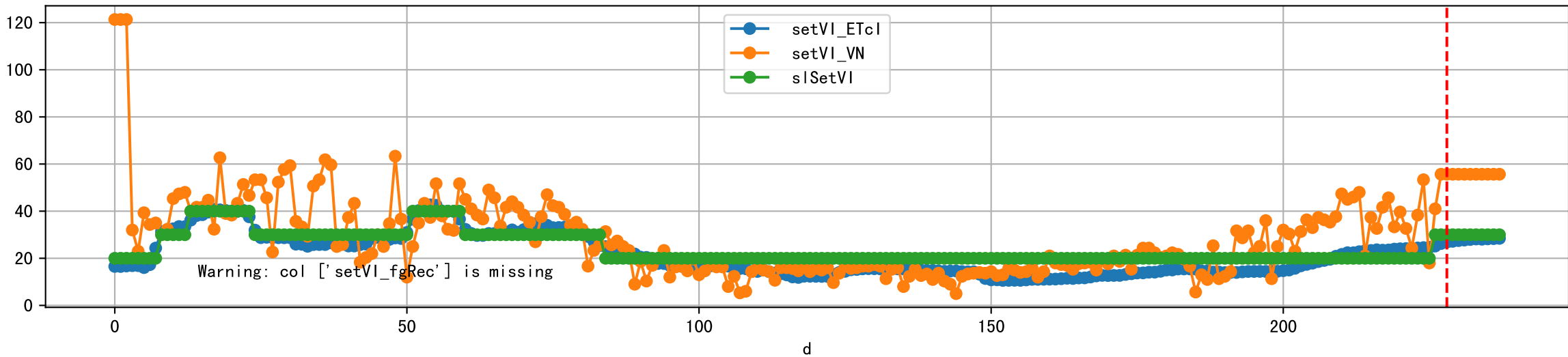




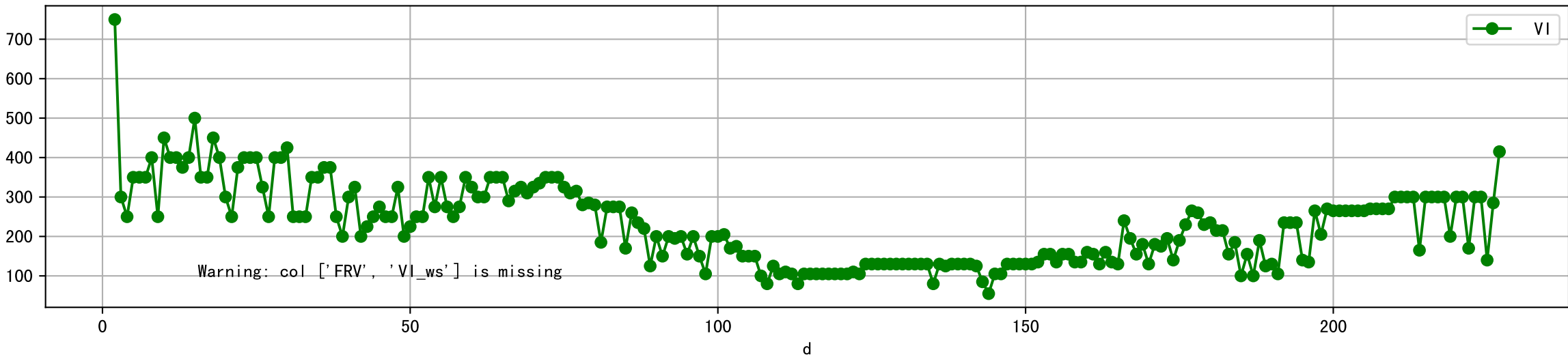
Plot [['taoc', 'taoc_raw:ro', 'taoc_avg:r-']]



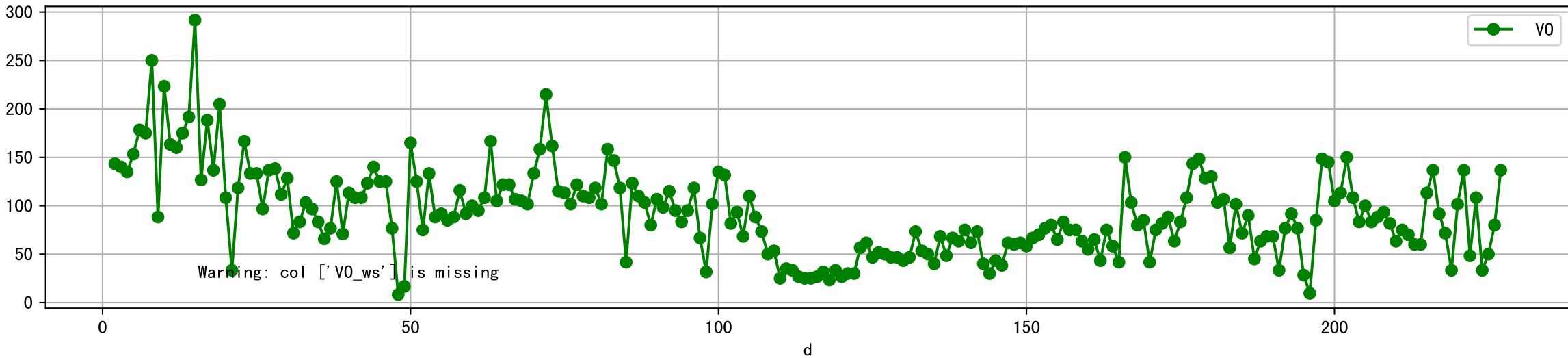
Plot [['setVI_ETcI', 'setVI_fgRec', 'setVI_VN', 'sISetVI']]



Plot [['FRV:b-o', 'VI_ws:r-o', 'VI:g-o']]

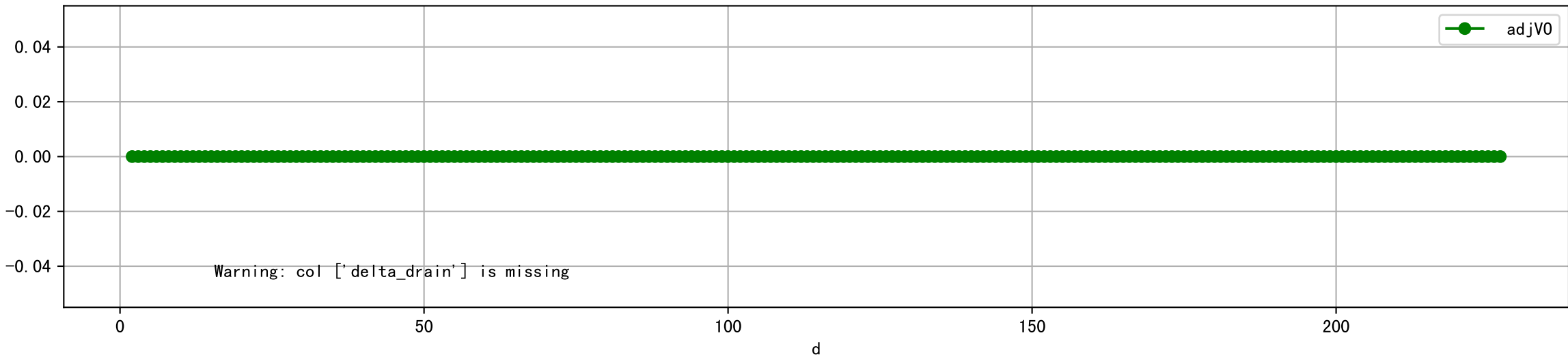


Plot [['V0_ws:r-o', 'V0:g-o']]

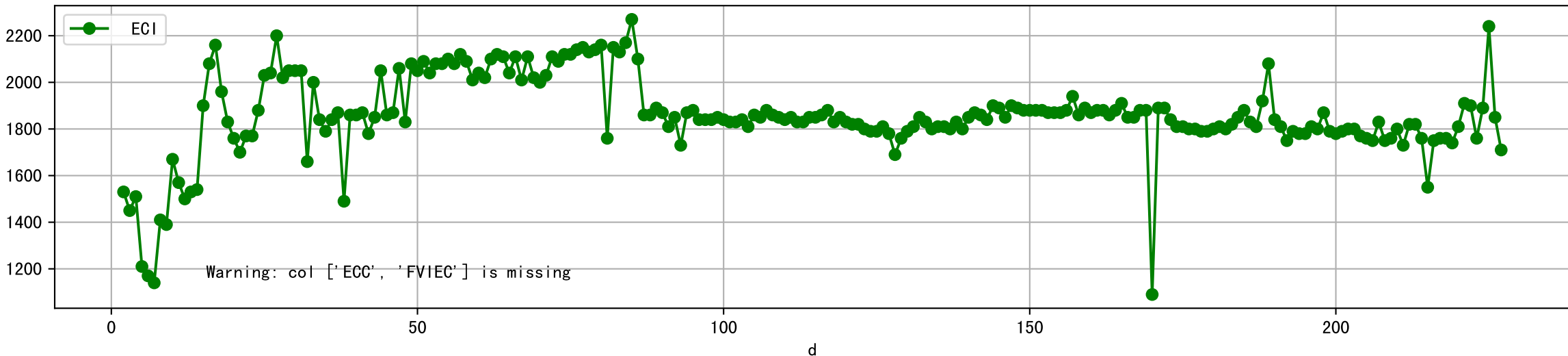


Warning: col ['V0_ws'] is missing

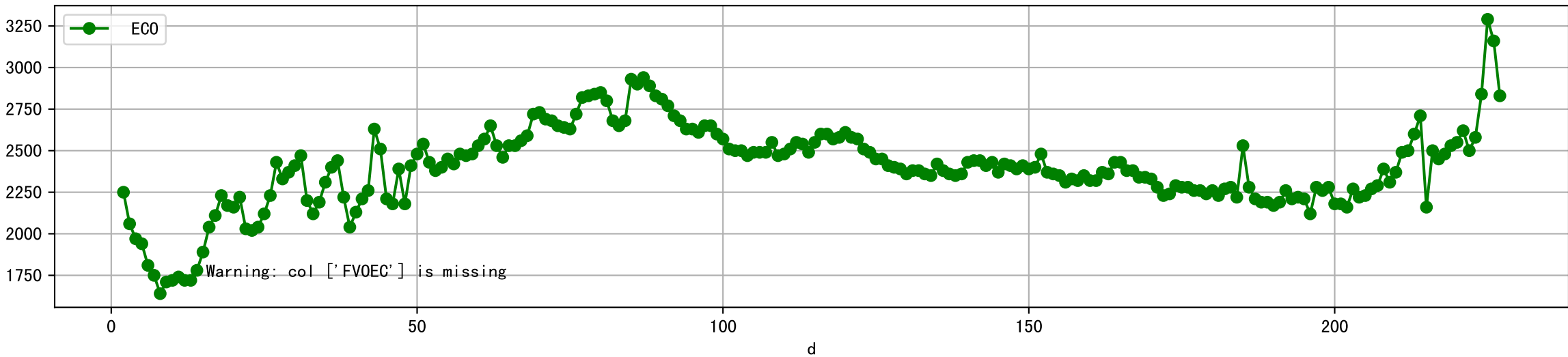
Plot [['delta_drain:ro', 'adjV0:g-o']]



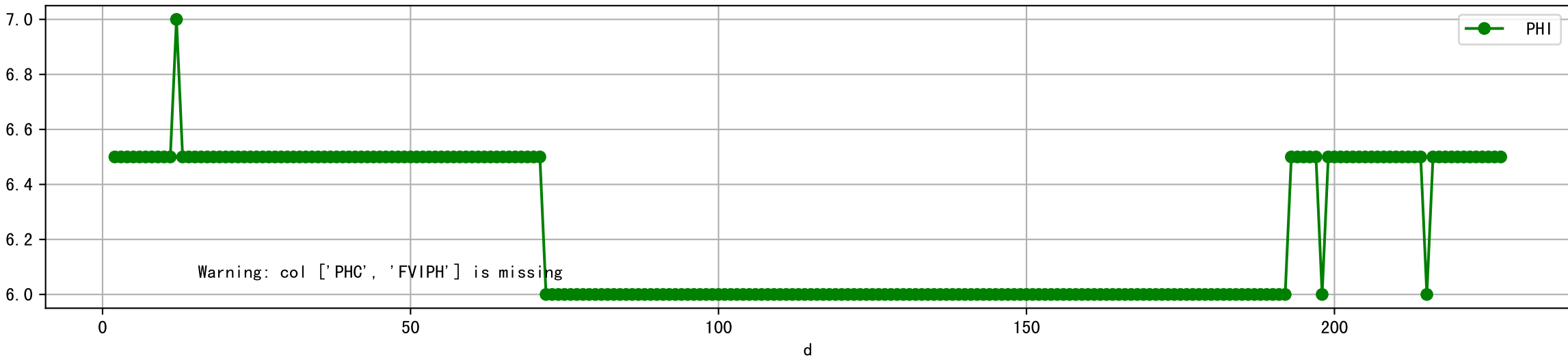
Plot [['ECC:b-o', 'FVIEC:r-o', 'ECI:g-o']]



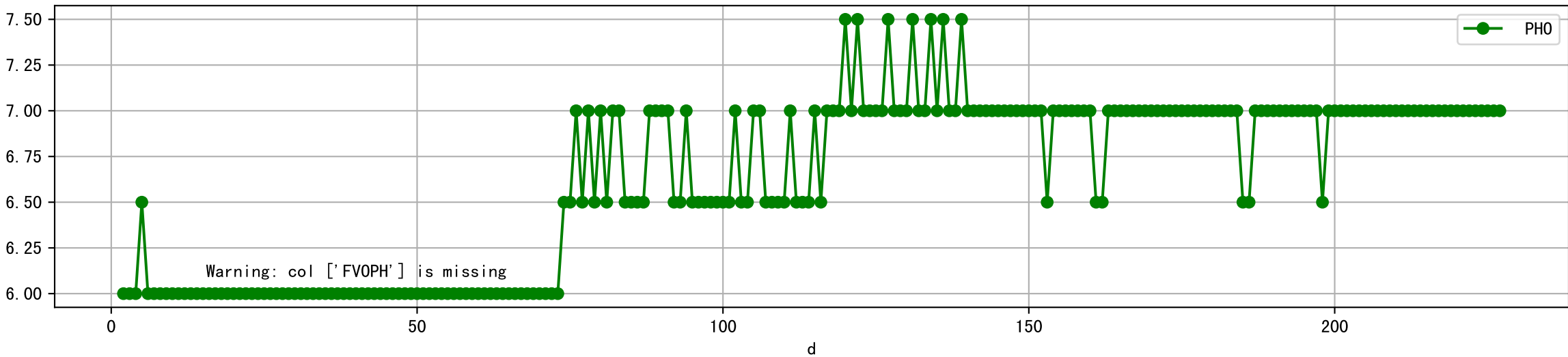
Plot [[' FV0EC:r-o', ' ECO:g-o']]



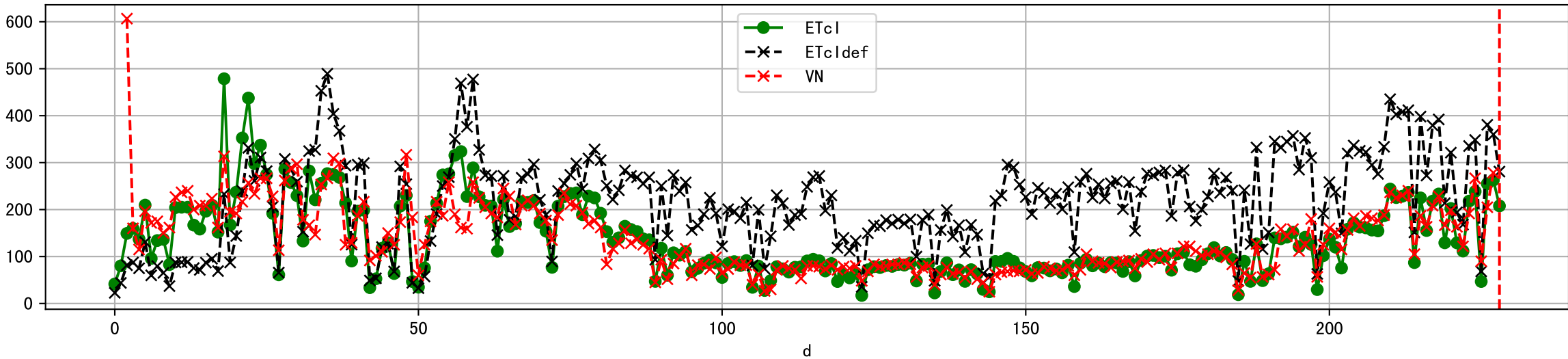
Plot [['PHC:b-o', 'FVIPH:r-o', 'PHI:g-o']]



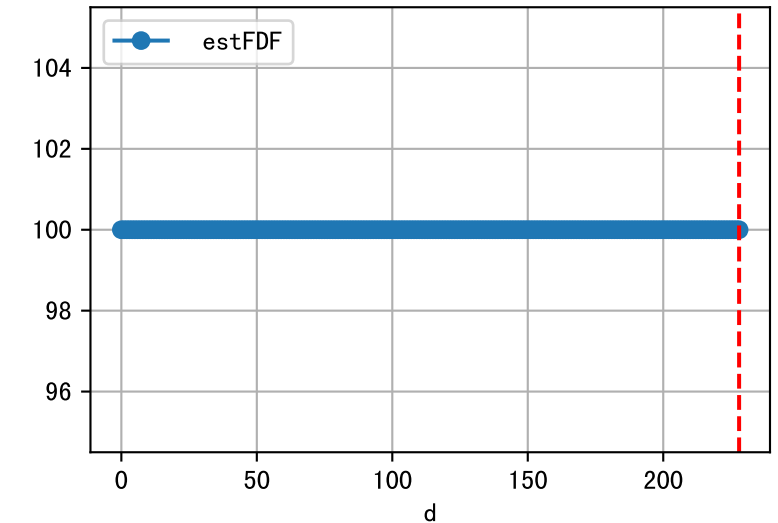
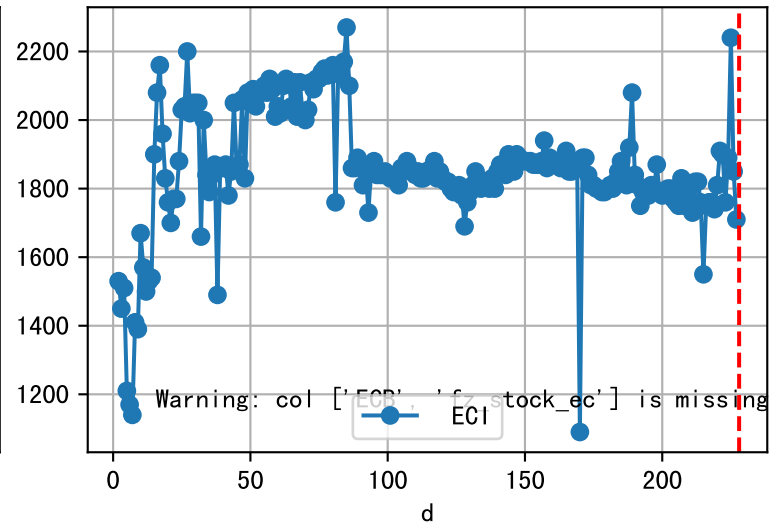
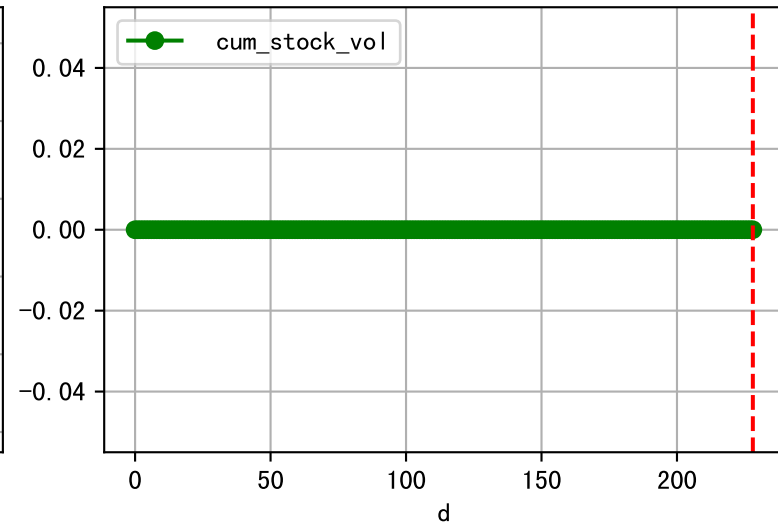
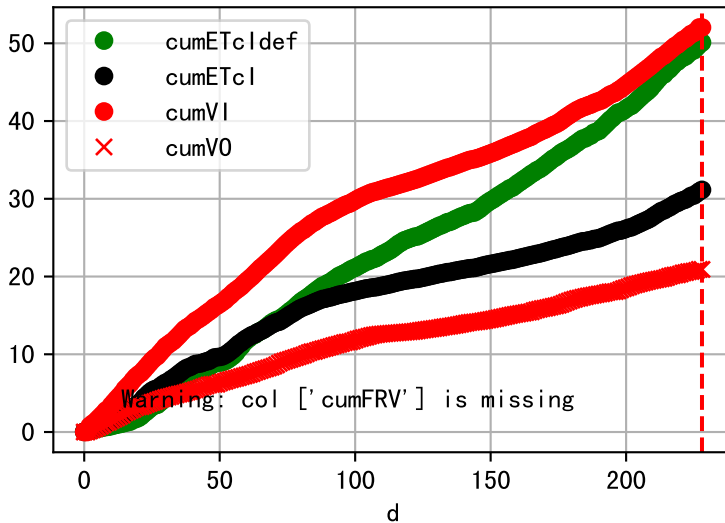
Plot [[' FVOPH:r-o' , ' PH0:g-o']]



Plot ET/VN



Plot Fv and fertilizer usage

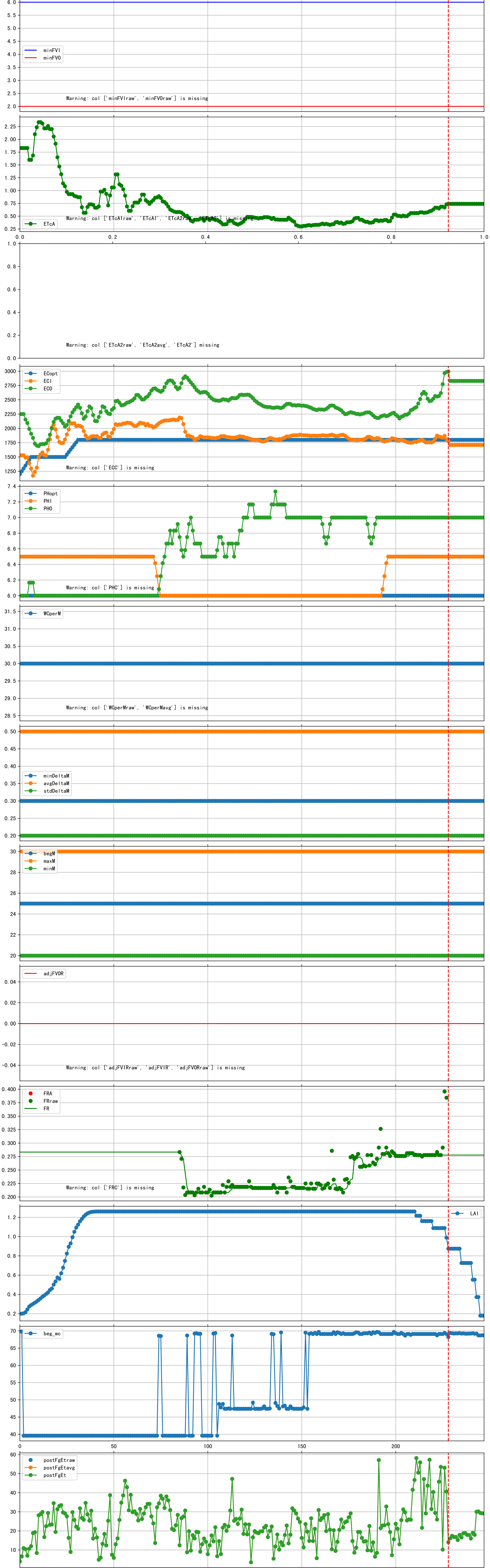




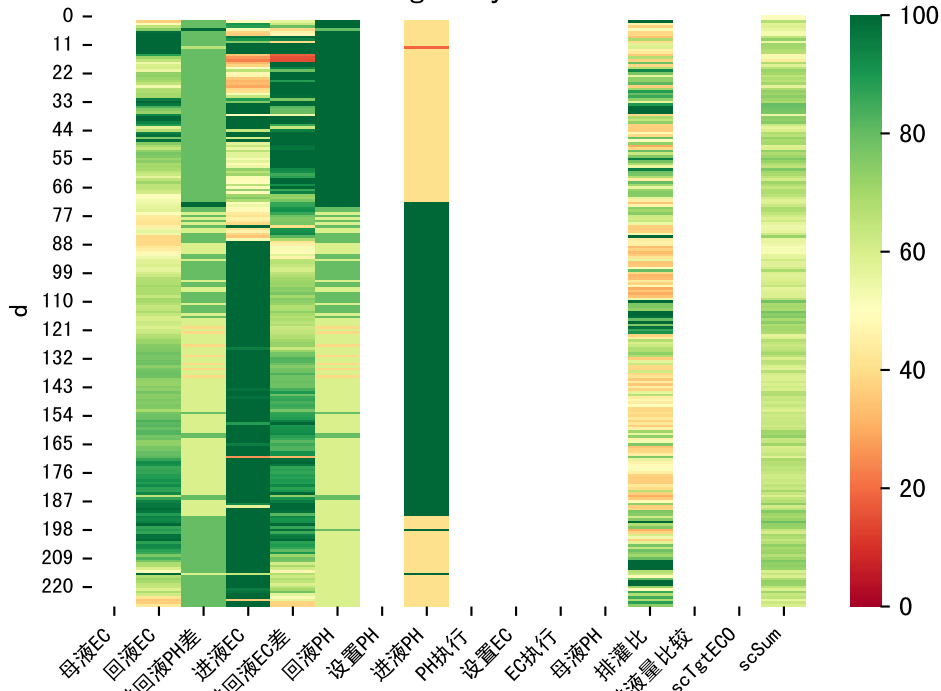
Fertilizer Range Source: kerleyL, kerleyH, UnivFL, TNAI, Haifa

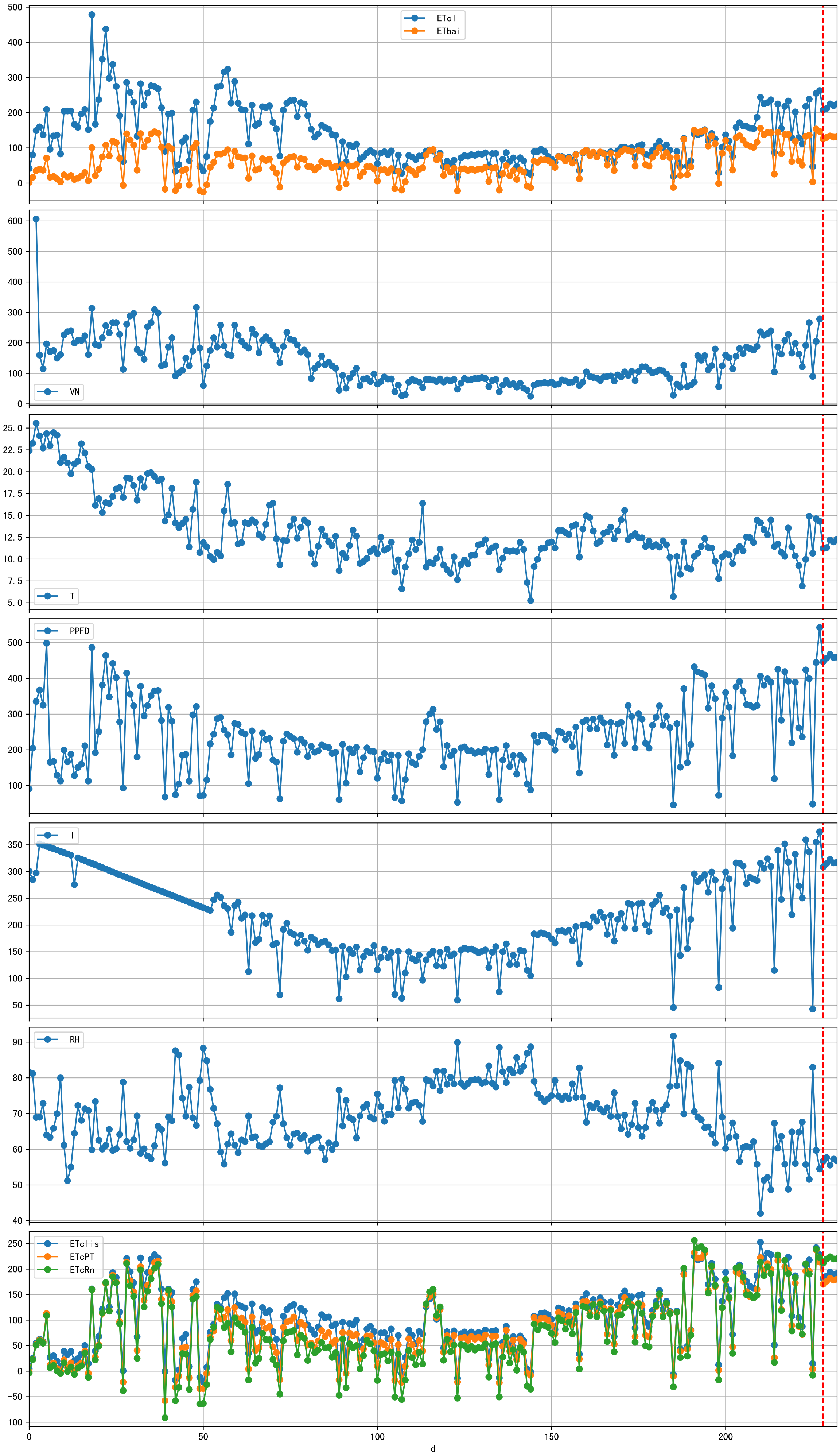


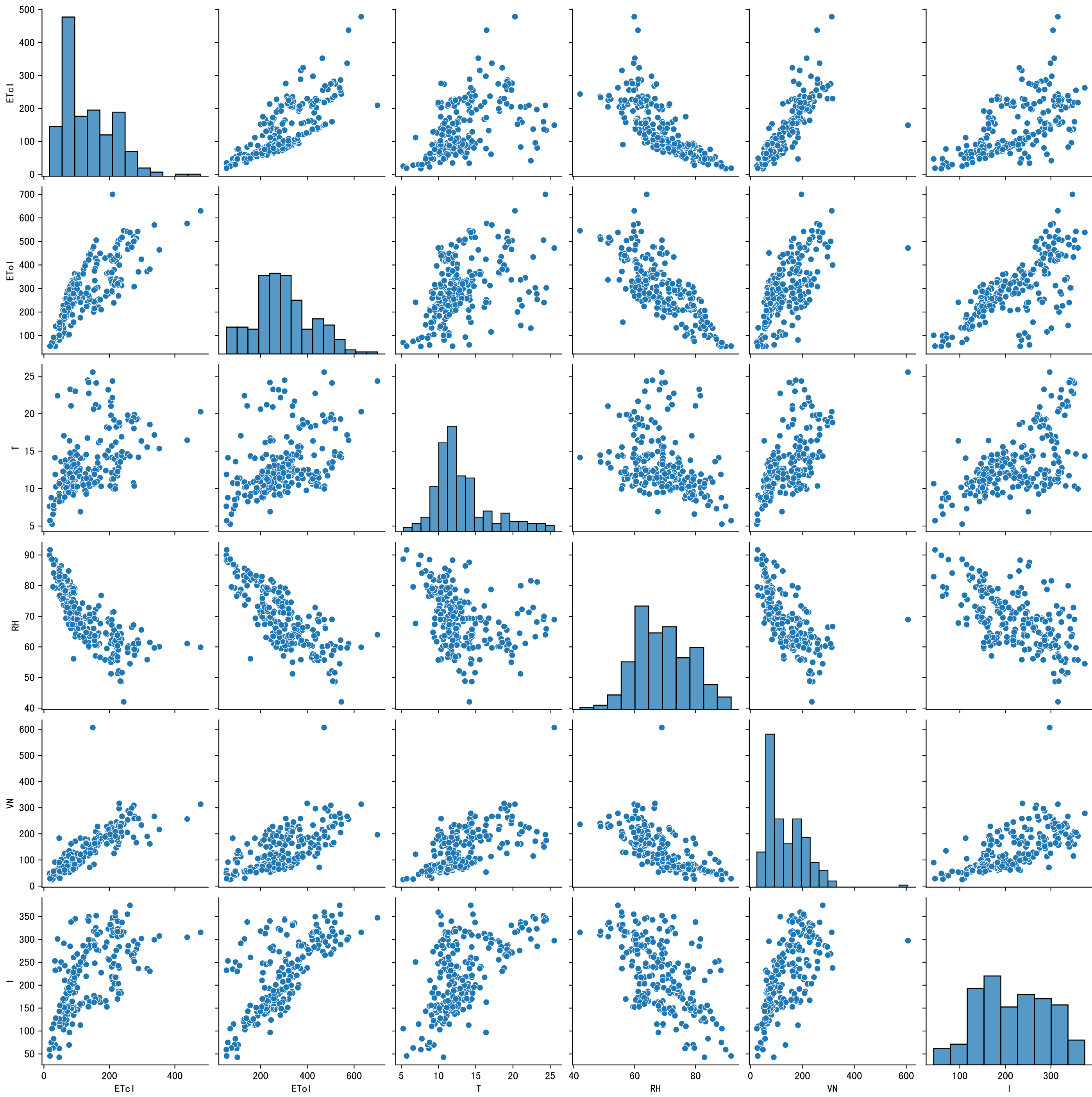
Trend plot for P2-2_0

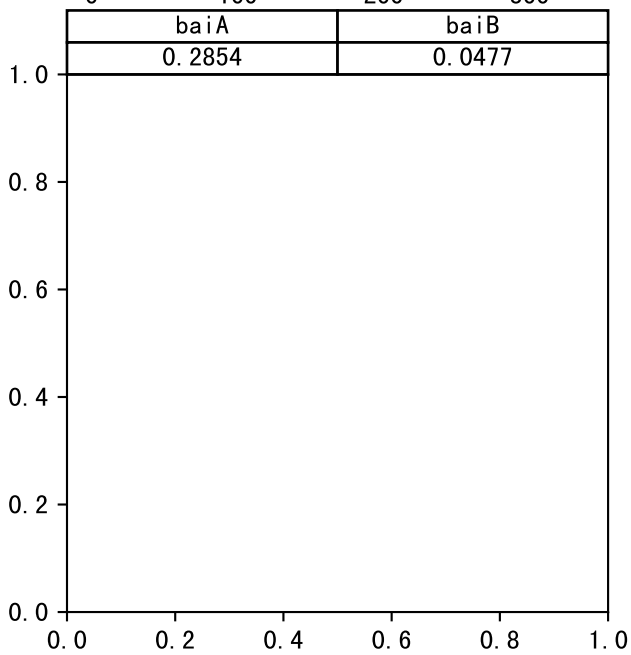
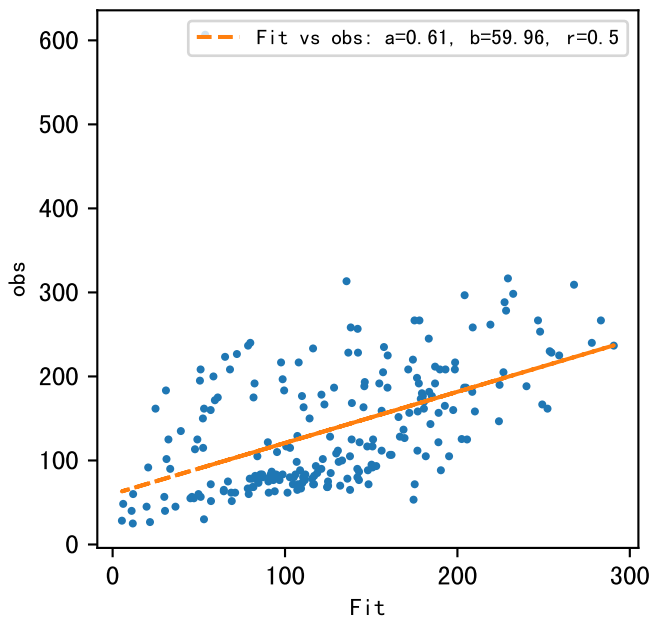
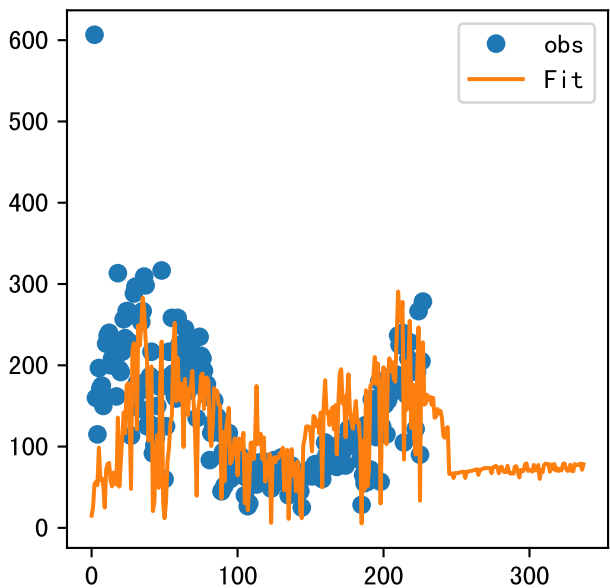


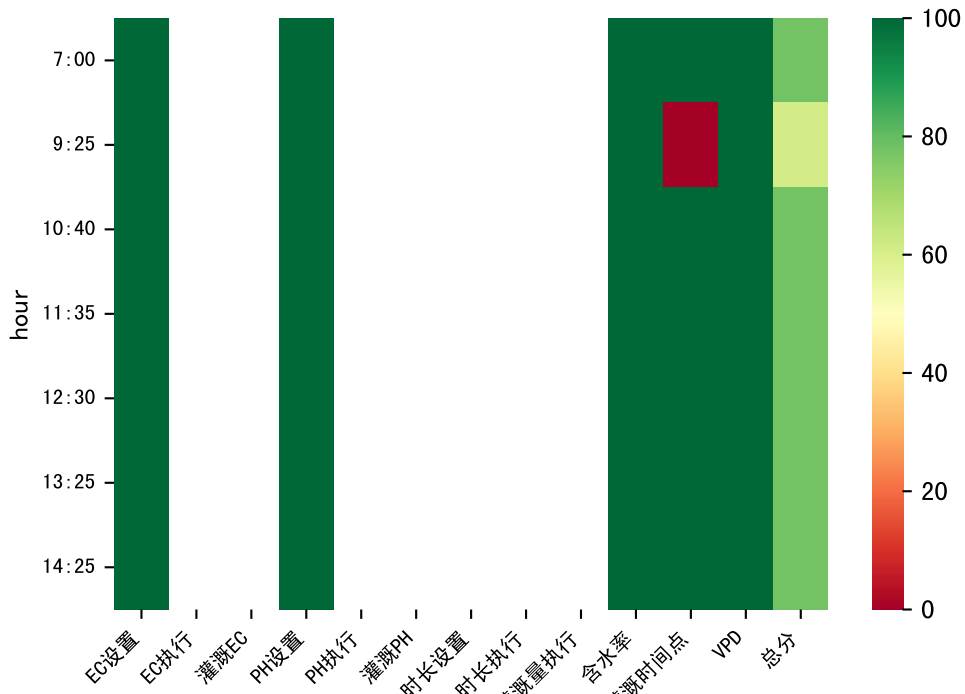
FgDaily



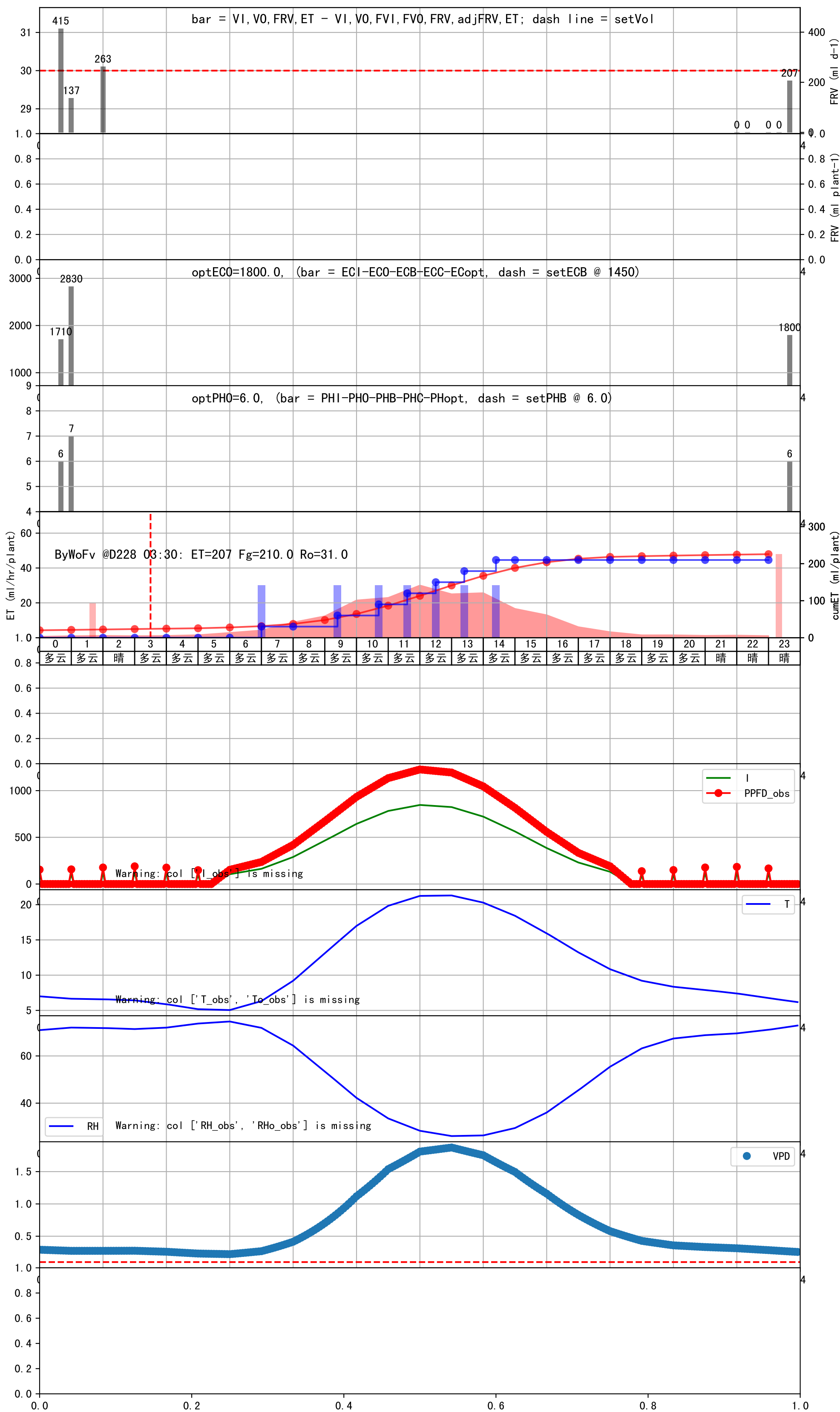




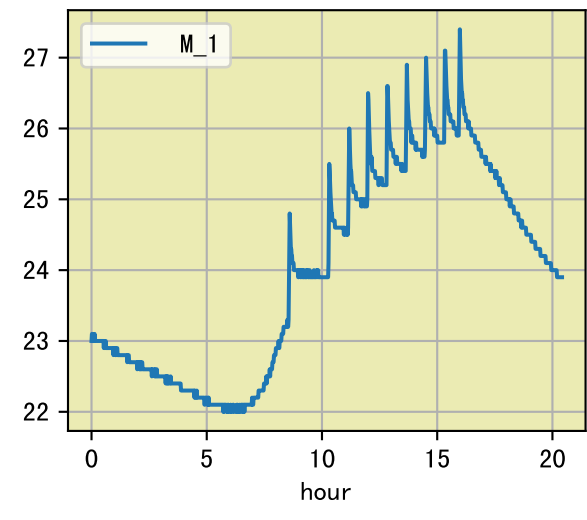




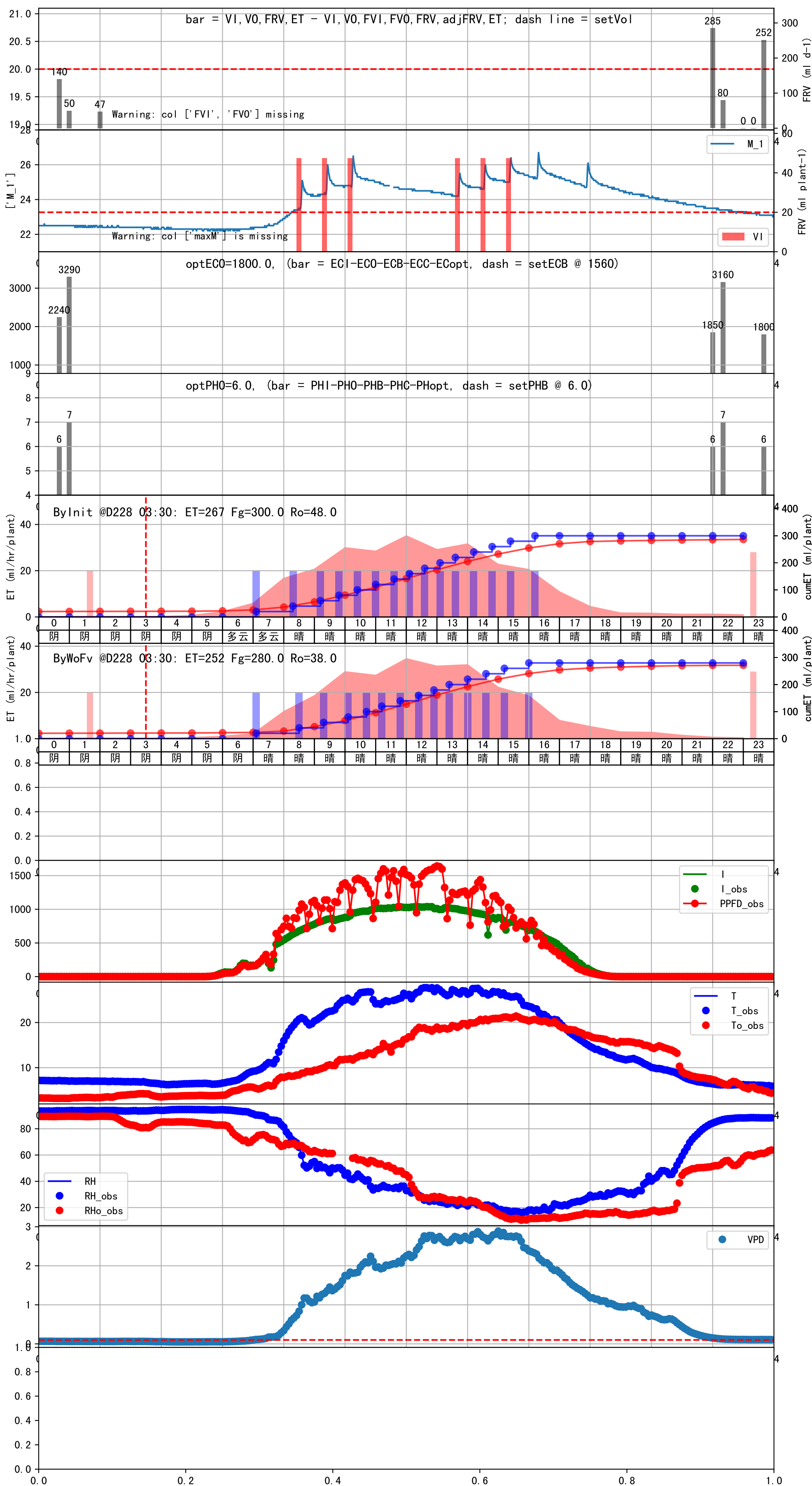
时间	灌溉时长(秒)	灌溉量(毫升/株)	灌溉总量(方/次)	天气	注释
07:00	107	30.0	0.202	多云	预期@07:00 手动 (未用传感器)
09:25	107	30.0	0.202	多云	预期@09:25 手动 (未用传感器)
10:40	107	30.0	0.202	多云	预期@10:40 手动 (未用传感器)
11:35	107	30.0	0.202	多云	预期@11:35 手动 (未用传感器)
12:30	107	30.0	0.202	多云	预期@12:30 手动 (未用传感器)
13:25	107	30.0	0.202	多云	预期@13:25 手动 (未用传感器)
14:25	107	30.0	0.202	多云	预期@14:25 手动 (未用传感器)
总计	749.0 (7次)	210.0			建议进液EC: 1450, PH: 6.0

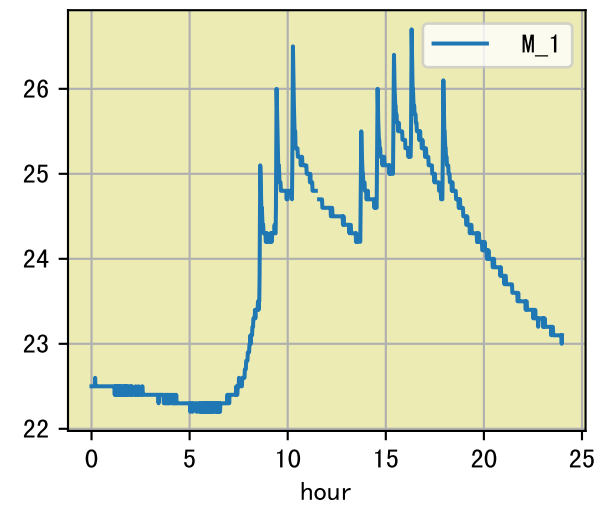


时间	灌溉时长(秒)	灌溉量(毫升/株)	灌溉总量(方/次)	天气	注释
07:05	107	30.0	0.202	晴	假设@07:05 未知程序 (未用传感器)
09:15	107	30.0	0.202	晴	假设@09:15 未知程序 (未用传感器)
10:20	107	30.0	0.202	晴	假设@10:20 未知程序 (未用传感器)
11:15	107	30.0	0.202	晴	假设@11:15 未知程序 (未用传感器)
12:05	107	30.0	0.202	晴	假设@12:05 未知程序 (未用传感器)
12:55	107	30.0	0.202	晴	假设@12:55 未知程序 (未用传感器)
13:45	107	30.0	0.202	晴	假设@13:45 未知程序 (未用传感器)
14:35	107	30.0	0.202	晴	假设@14:35 未知程序 (未用传感器)
15:35	107	30.0	0.202	晴	假设@15:35 未知程序 (未用传感器)
总计	963.0 (9次)	270.0			建议进液EC: 1570, PH: 6.0

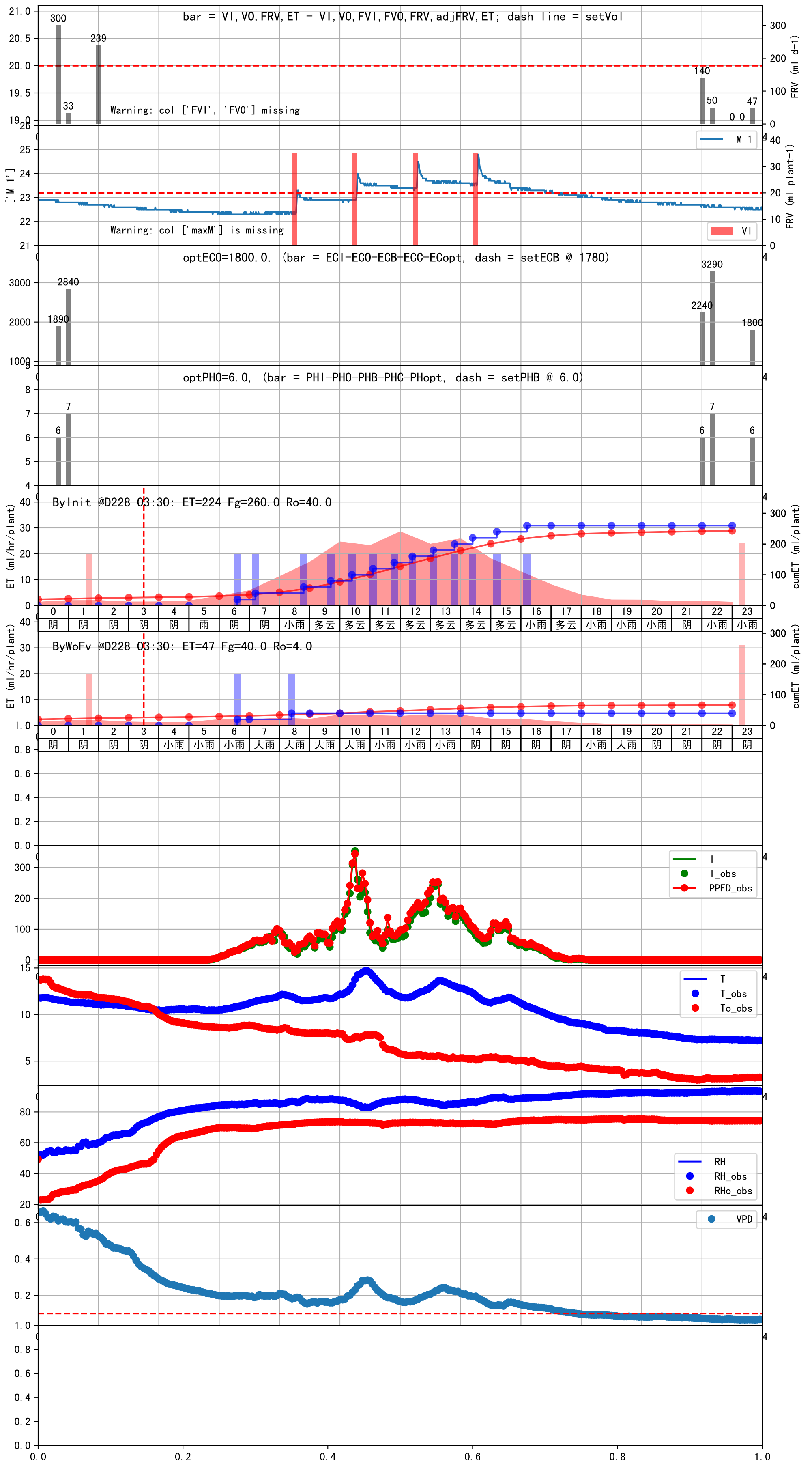


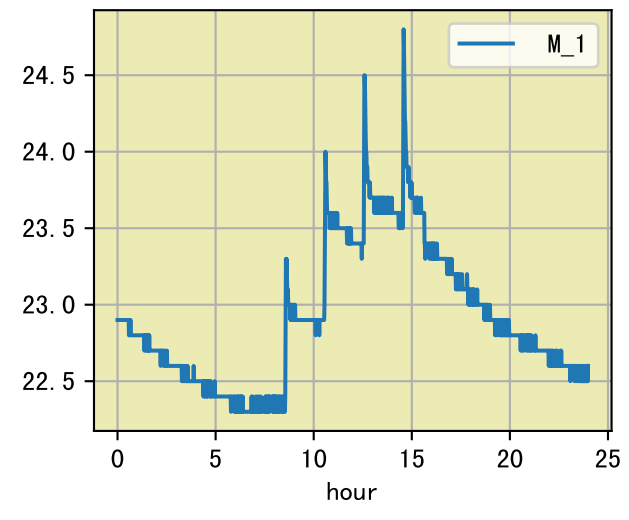
时间	灌溉时长(秒)	灌溉量(毫升/株)	灌溉总量(方/次)	天气	注释
07:05	71	20.0	0.134	晴	假设@07:05 未知程序 (未用传感器)
08:30	71	20.0	0.134	晴	假设@08:30 未知程序 (未用传感器)
09:20	71	20.0	0.134	晴	假设@09:20 未知程序 (未用传感器)
10:05	71	20.0	0.134	晴	假设@10:05 未知程序 (未用传感器)
10:40	71	20.0	0.134	晴	假设@10:40 未知程序 (未用传感器)
11:15	71	20.0	0.134	晴	假设@11:15 未知程序 (未用传感器)
11:50	71	20.0	0.134	晴	假设@11:50 未知程序 (未用传感器)
12:25	71	20.0	0.134	晴	假设@12:25 未知程序 (未用传感器)
12:55	71	20.0	0.134	晴	假设@12:55 未知程序 (未用传感器)
13:25	71	20.0	0.134	晴	假设@13:25 未知程序 (未用传感器)
14:00	71	20.0	0.134	晴	假设@14:00 未知程序 (未用传感器)
14:35	71	20.0	0.134	晴	假设@14:35 未知程序 (未用传感器)
15:15	71	20.0	0.134	晴	假设@15:15 未知程序 (未用传感器)
16:00	71	20.0	0.134	晴	假设@16:00 未知程序 (未用传感器)
总计	994.0 (14次)	280.0			建议进液EC: 1560, PH: 6.0





时间	灌溉时长(秒)	灌溉量(毫升/株)	灌溉总量(方/次)	天气	注释
06:35	71	20.0	0.134	小雨	假设@06:35 未知程序 (未用传感器)
08:25	71	20.0	0.134	大雨	假设@08:25 未知程序 (未用传感器)
总计	142.0 (2次)	40.0			建议进液EC: 1780, PH: 6.0





时间	灌溉时长(秒)	灌溉量(毫升/株)	灌溉总量(方/次)	天气	注释
07:10	71	20.0	0.134	晴	假设@07:10 未知程序 (未用传感器)
08:30	71	20.0	0.134	晴	假设@08:30 未知程序 (未用传感器)
09:20	71	20.0	0.134	晴	假设@09:20 未知程序 (未用传感器)
10:05	71	20.0	0.134	晴	假设@10:05 未知程序 (未用传感器)
10:40	71	20.0	0.134	晴	假设@10:40 未知程序 (未用传感器)
11:15	71	20.0	0.134	晴	假设@11:15 未知程序 (未用传感器)
11:50	71	20.0	0.134	晴	假设@11:50 未知程序 (未用传感器)
12:20	71	20.0	0.134	晴	假设@12:20 未知程序 (未用传感器)
12:50	71	20.0	0.134	晴	假设@12:50 未知程序 (未用传感器)
13:25	71	20.0	0.134	多云	假设@13:25 未知程序 (未用传感器)
14:00	71	20.0	0.134	多云	假设@14:00 未知程序 (未用传感器)
14:40	71	20.0	0.134	多云	假设@14:40 未知程序 (未用传感器)
15:25	71	20.0	0.134	多云	假设@15:25 未知程序 (未用传感器)
16:40	71	20.0	0.134	晴	假设@16:40 未知程序 (未用传感器)
总计	994.0 (14次)	280.0			建议进液EC: 1500, PH: 6.0

