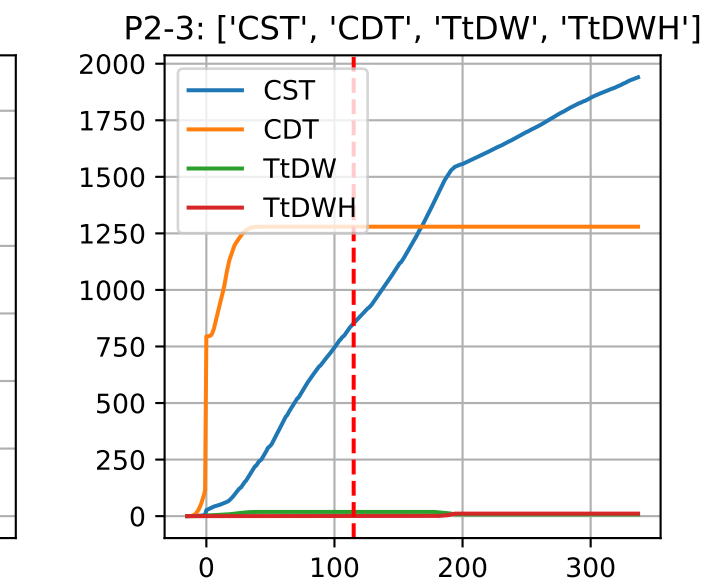
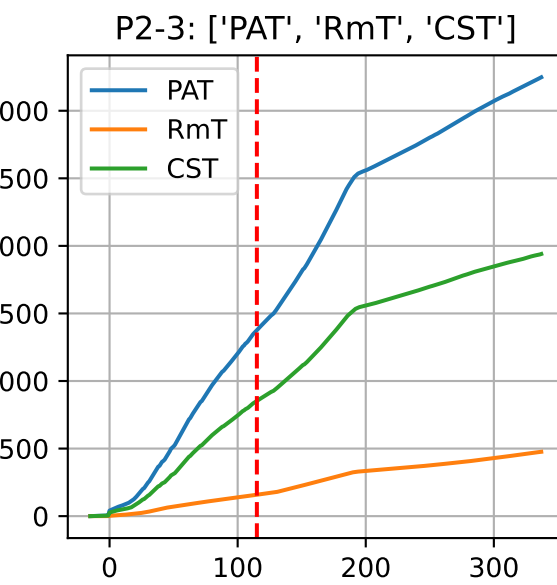
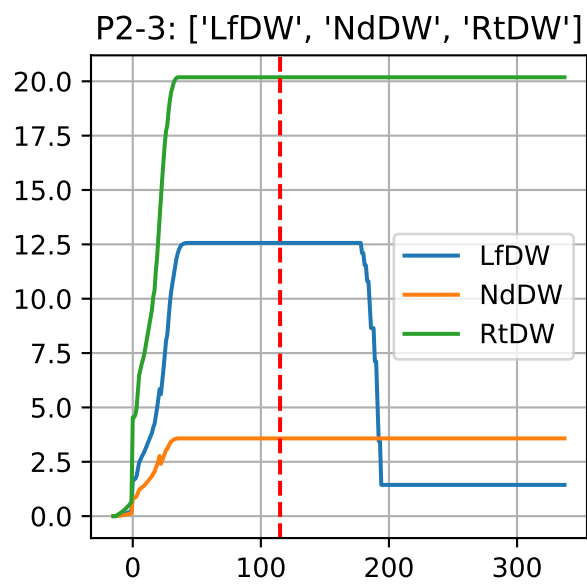
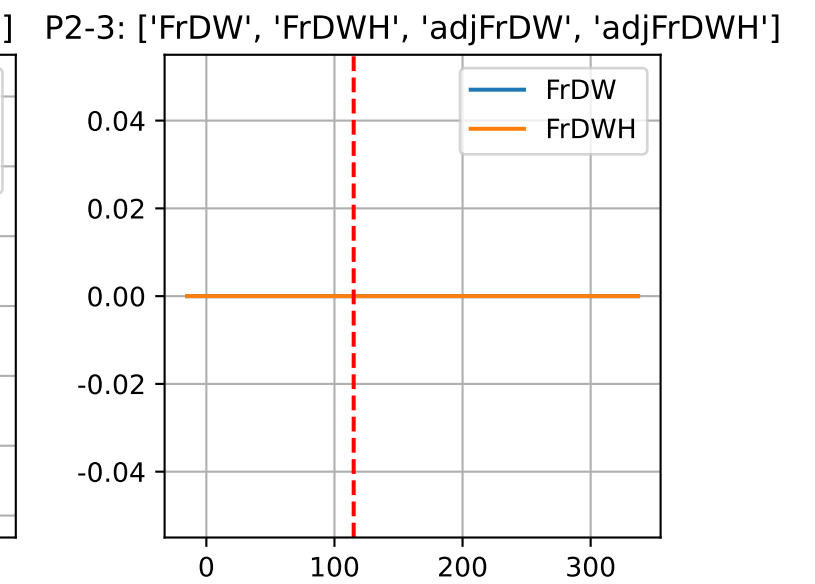
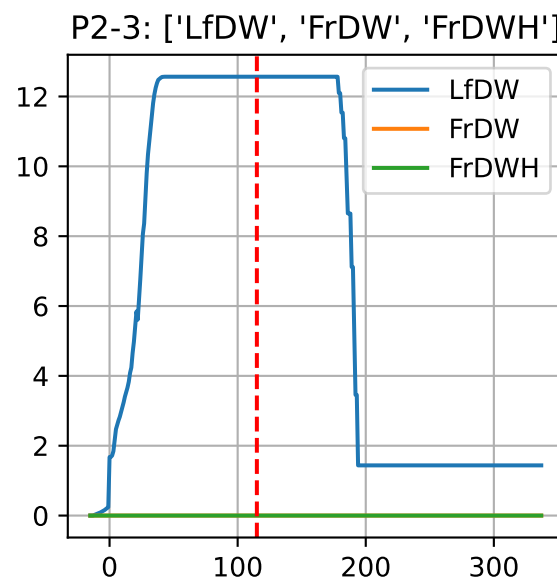
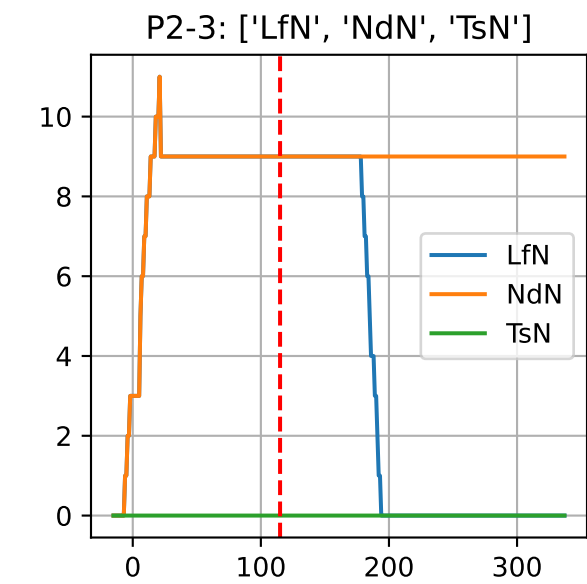
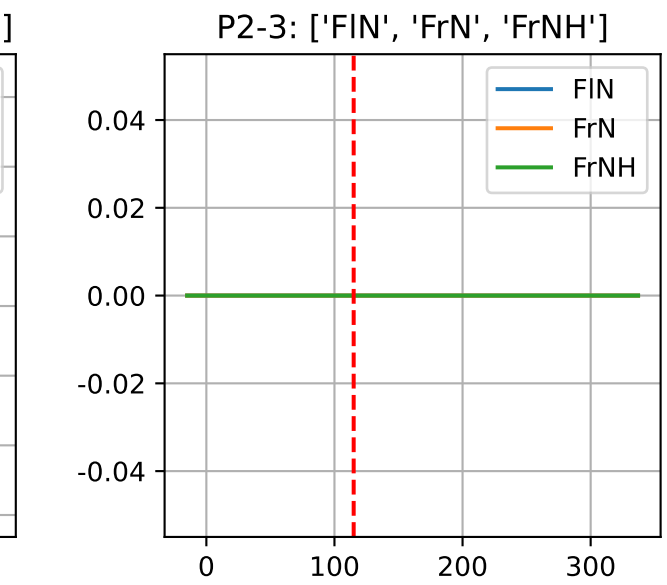
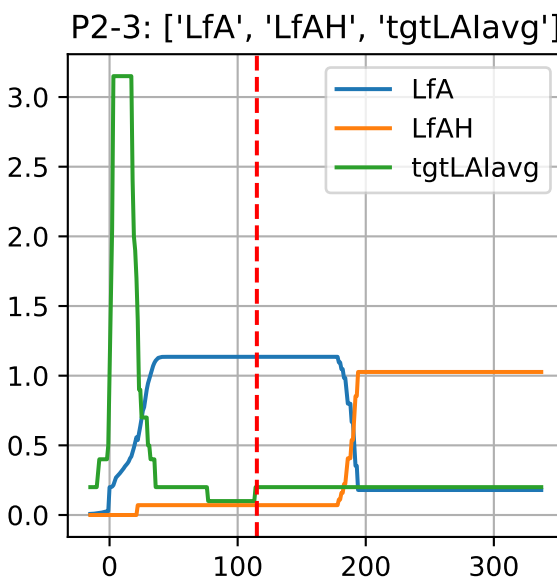
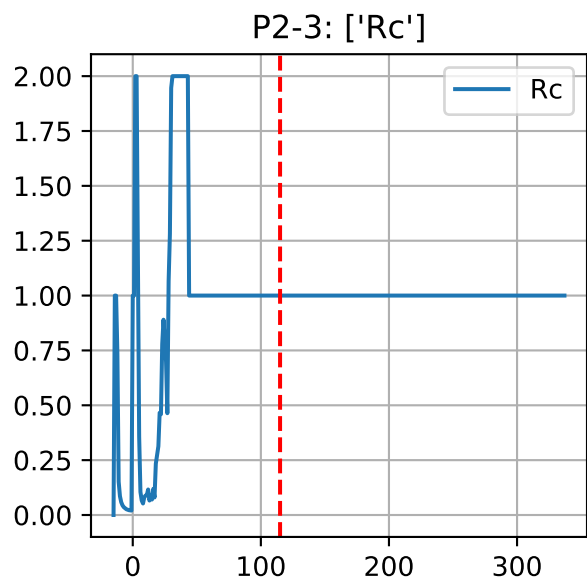
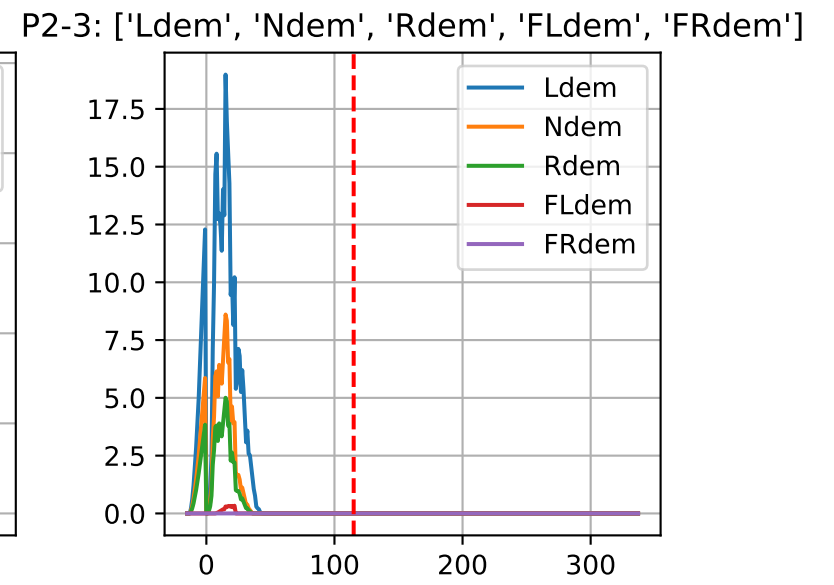
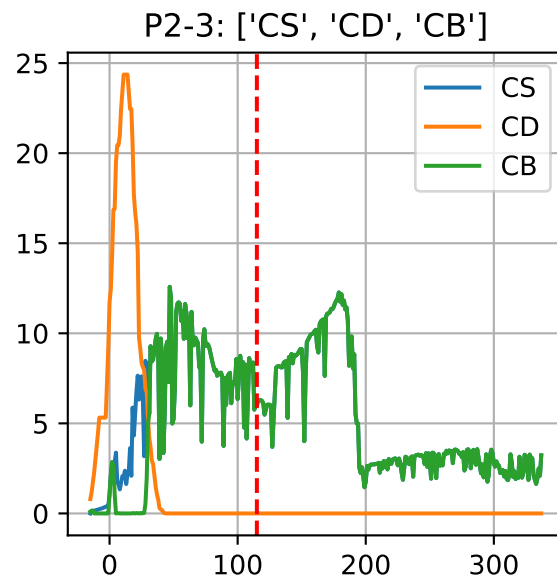
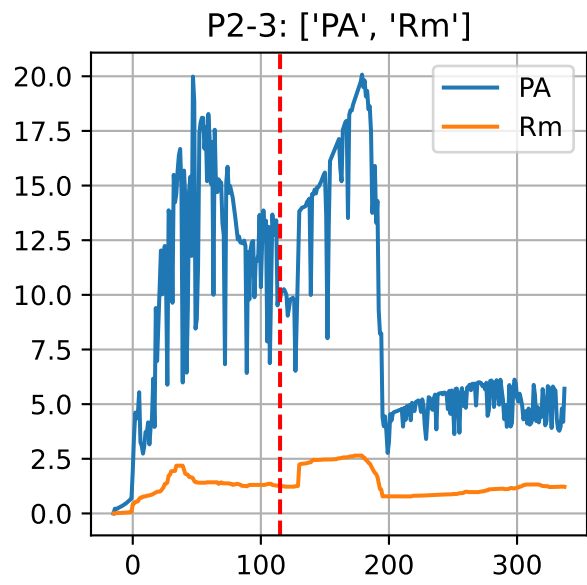
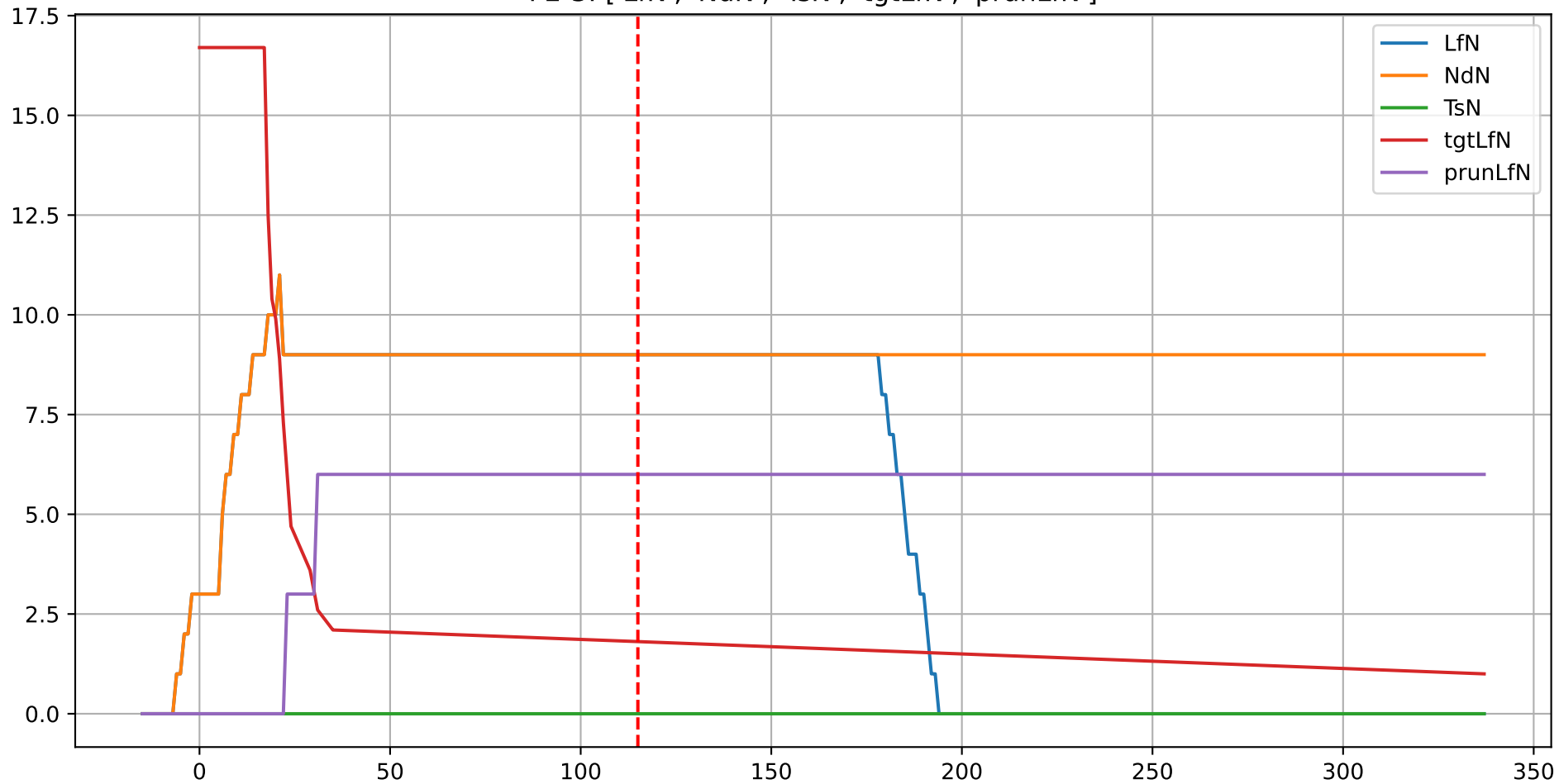


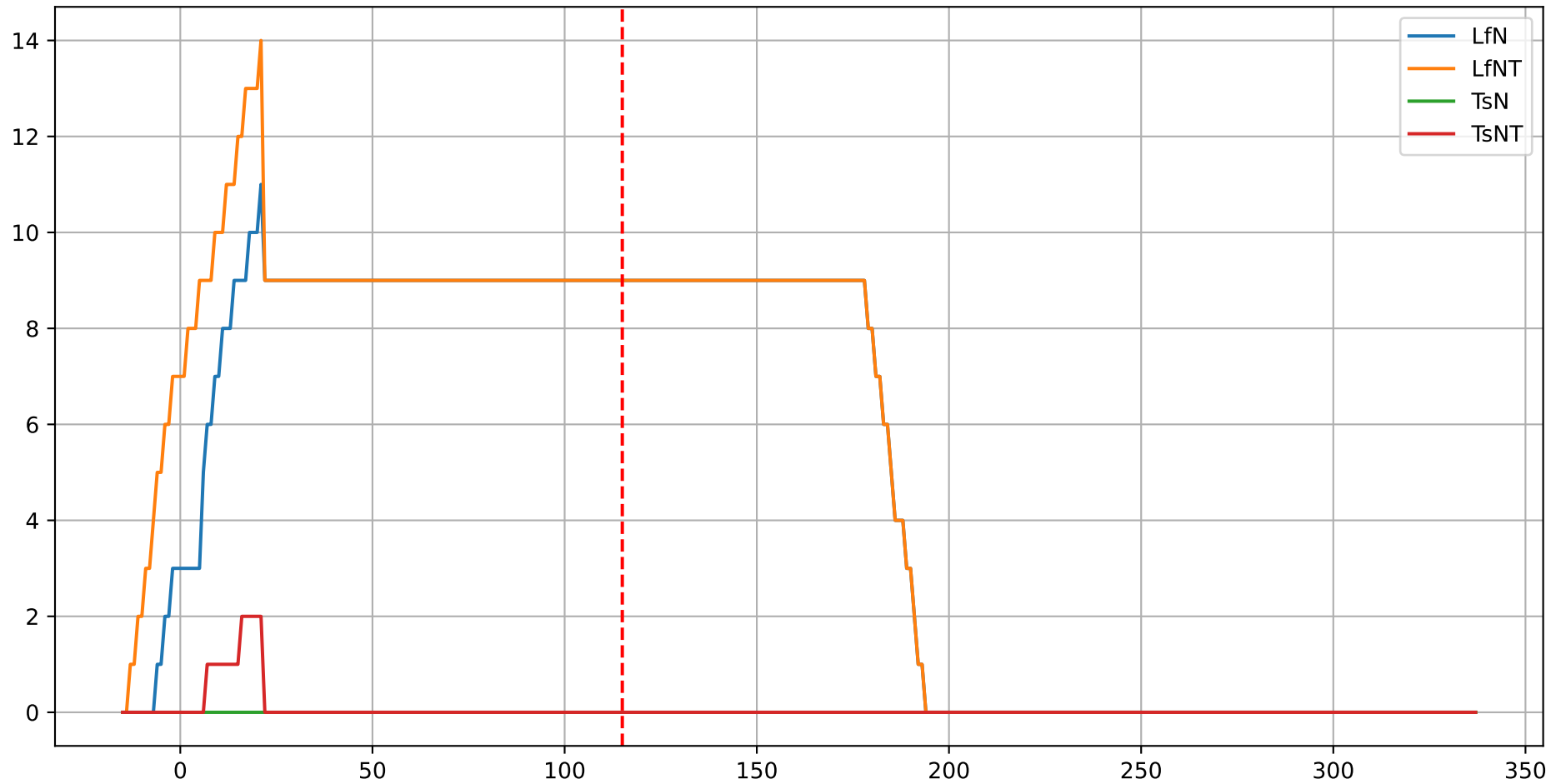
## Model Prediction (P2-3)



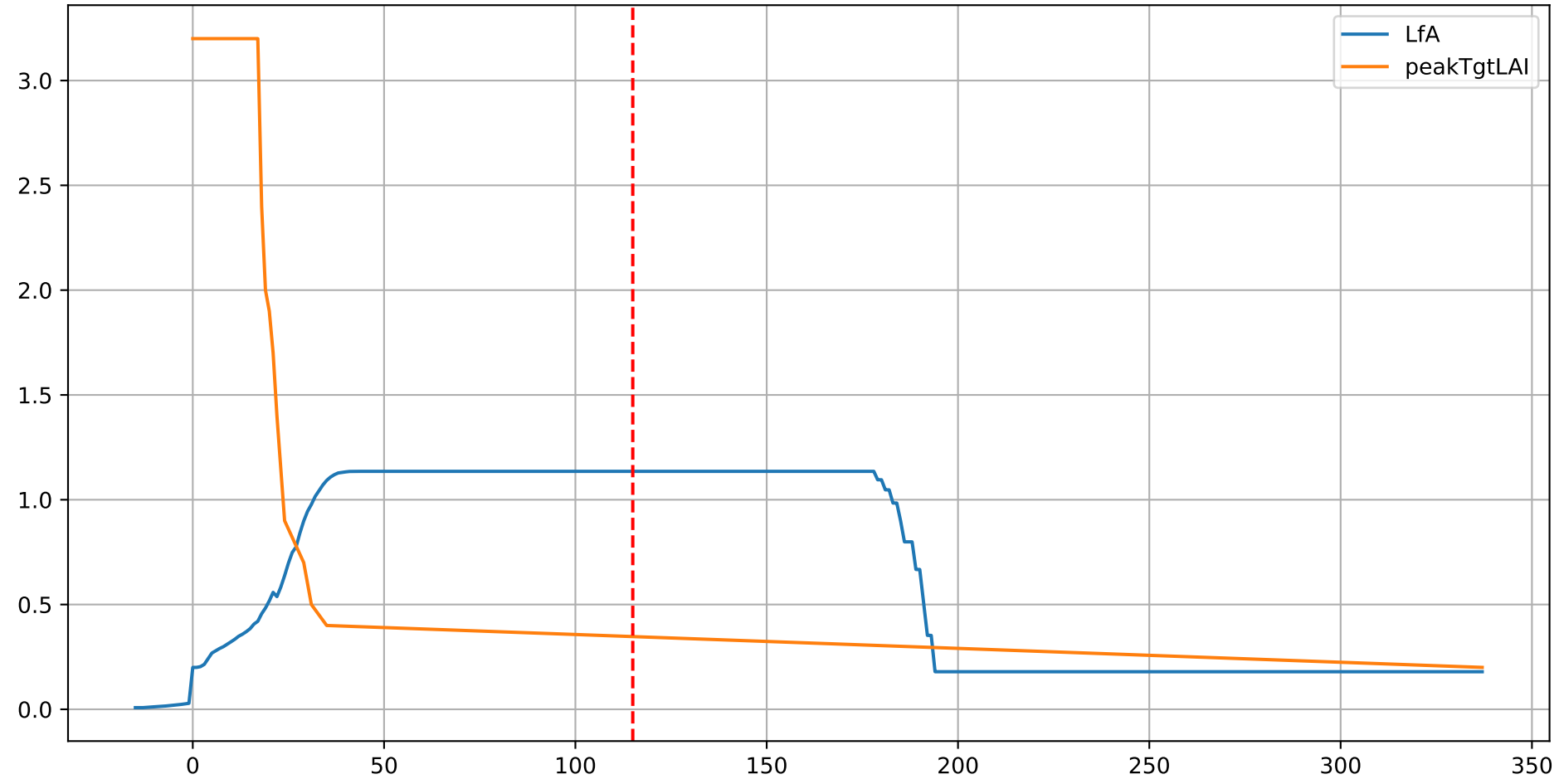
P2-3: ['LfN', 'NdN', 'TsN', 'tgtLfN', 'prunLfN']



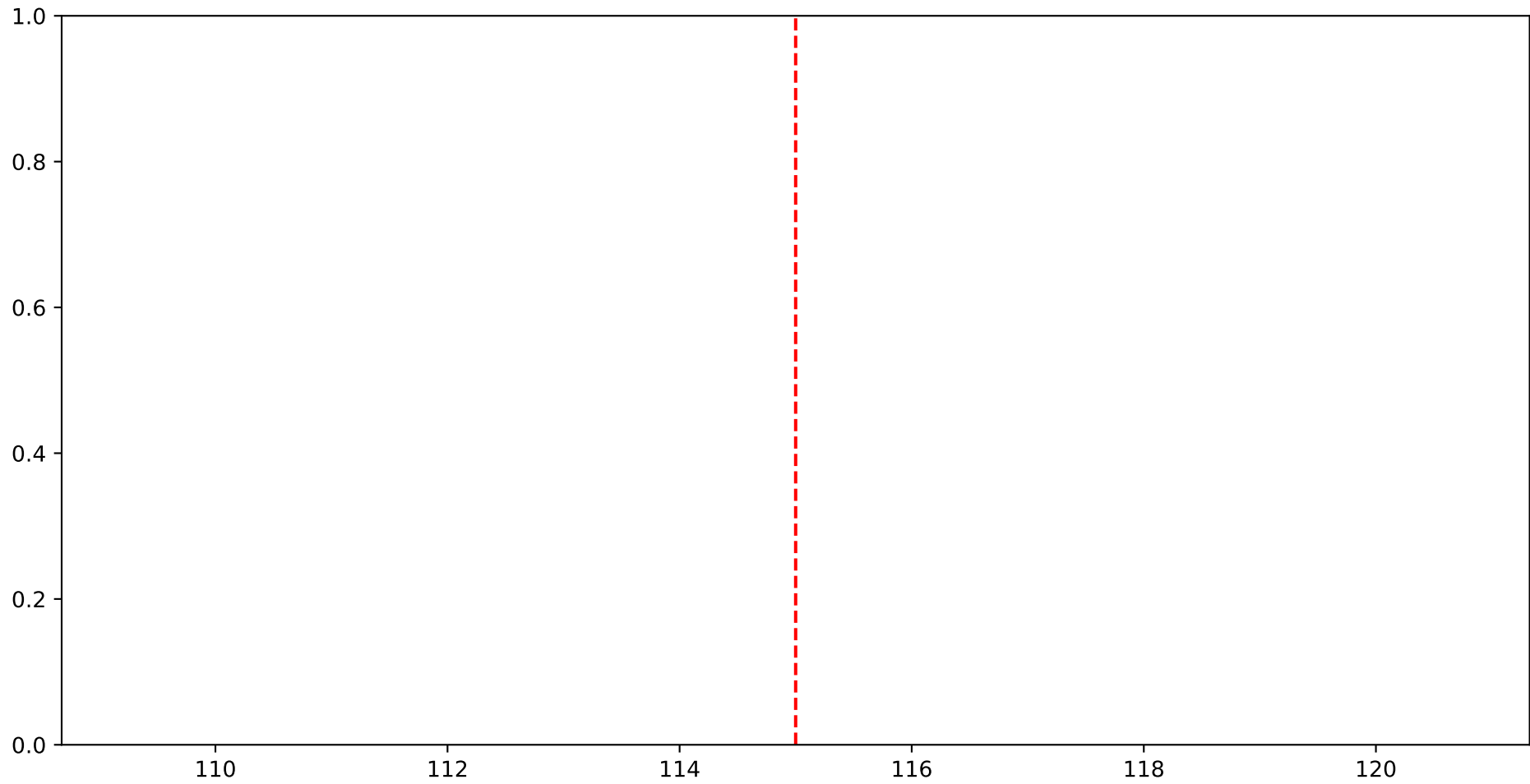
P2-3: ['LfN', 'LfNT', 'TsN', 'TsNT']



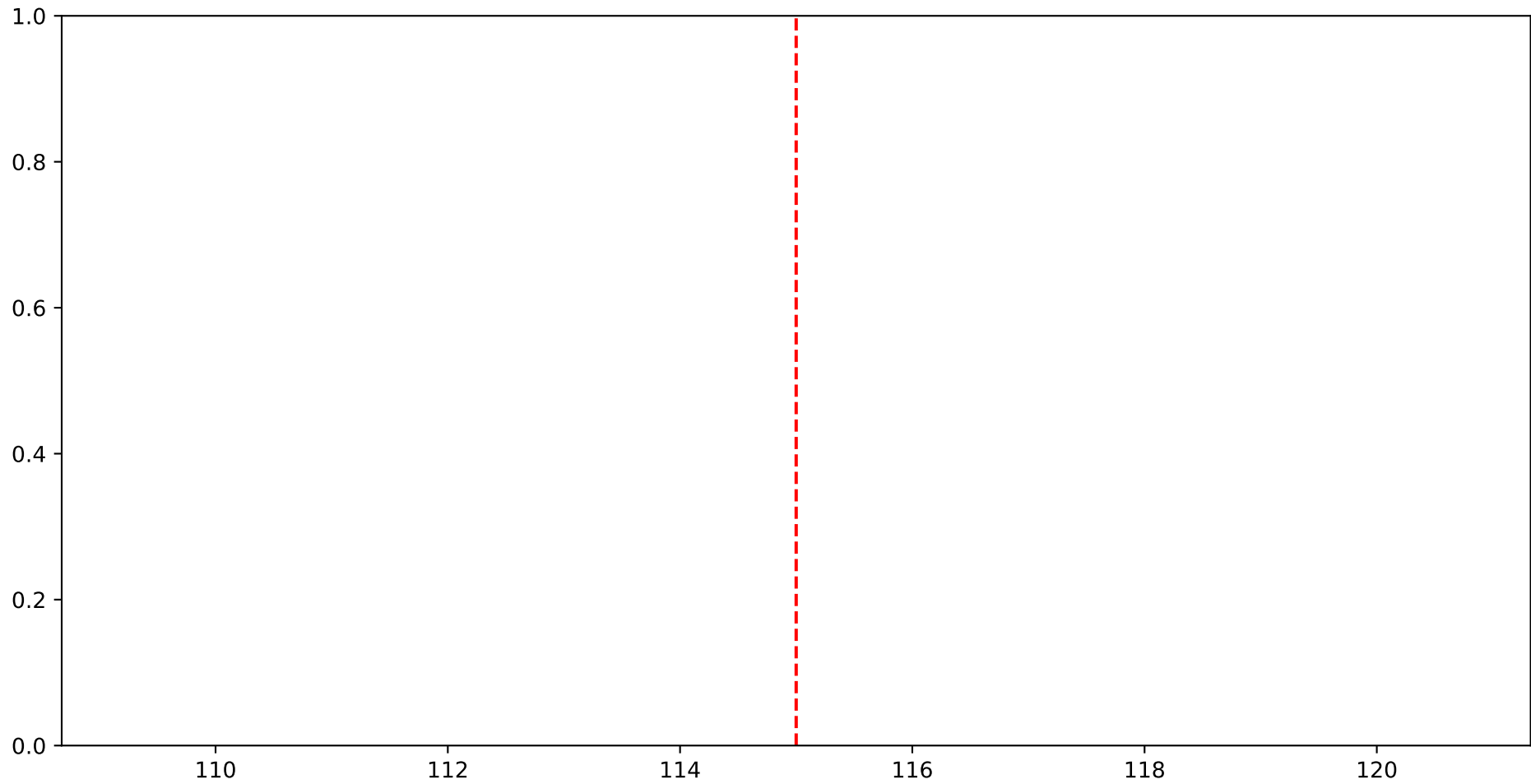
P2-3: ['LfA', 'peakTgtLAI']



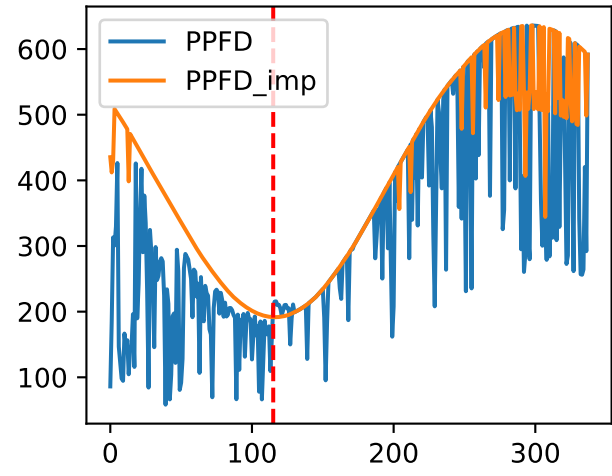
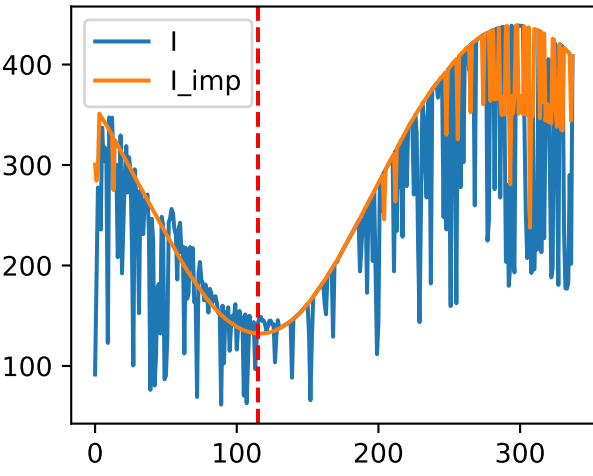
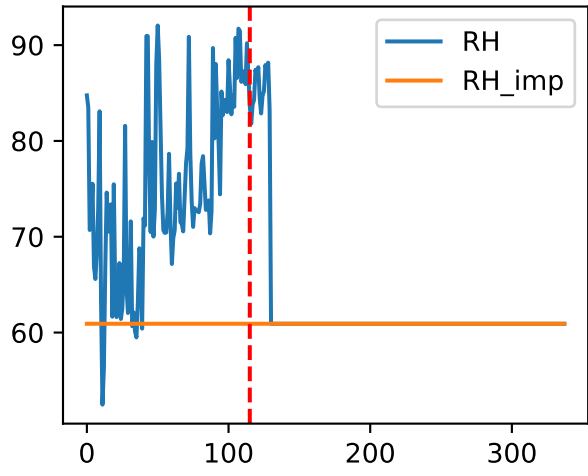
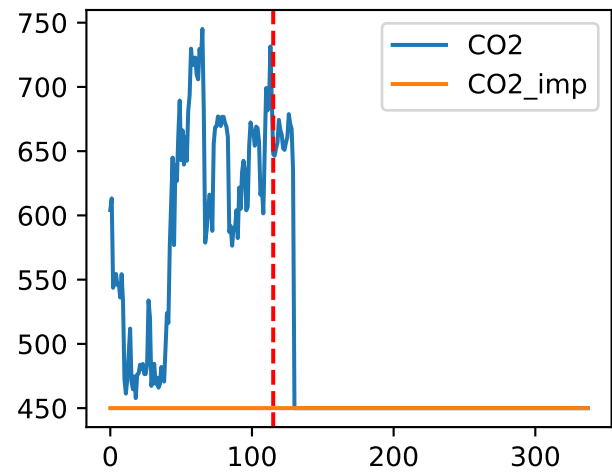
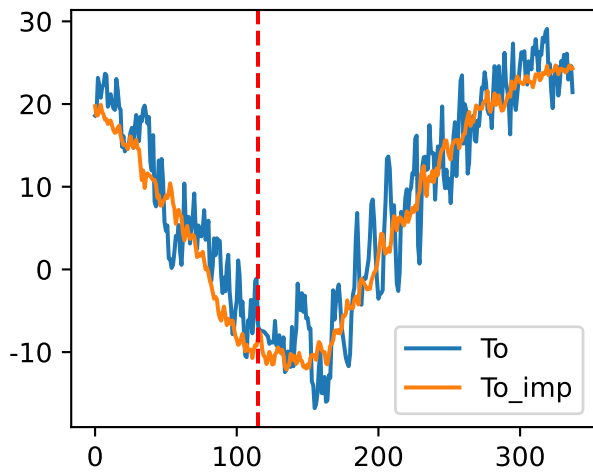
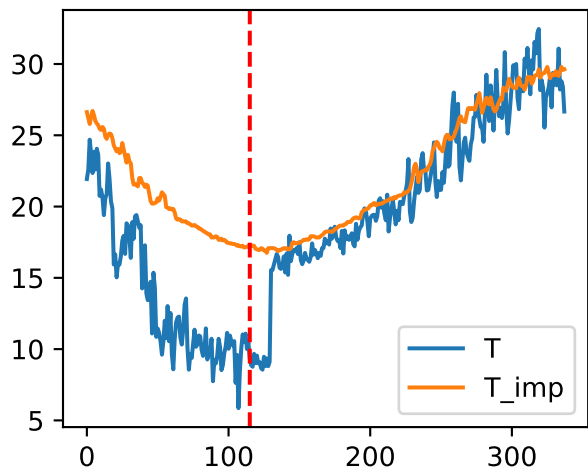
P2-3 (plot by DAT)



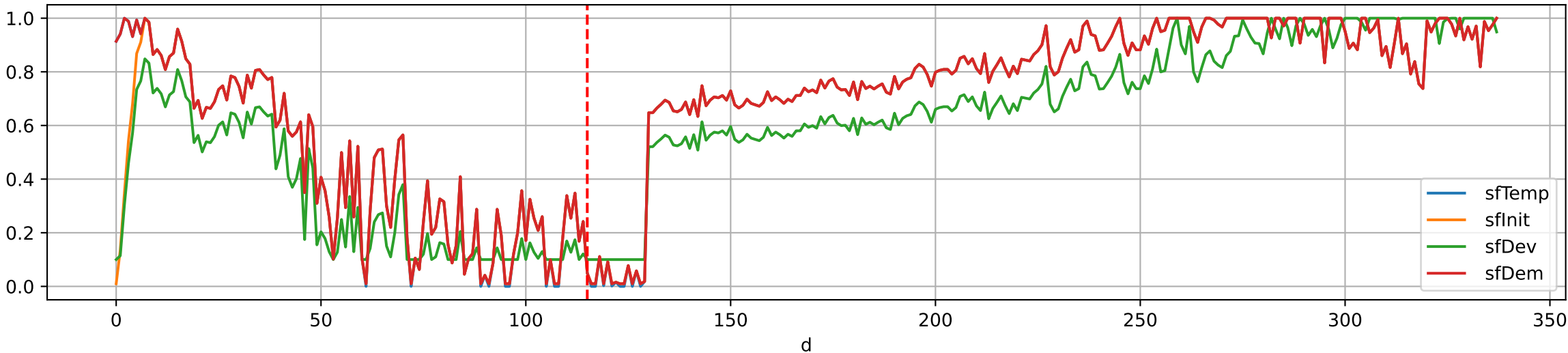
P2-3 (plot by adjDAT)



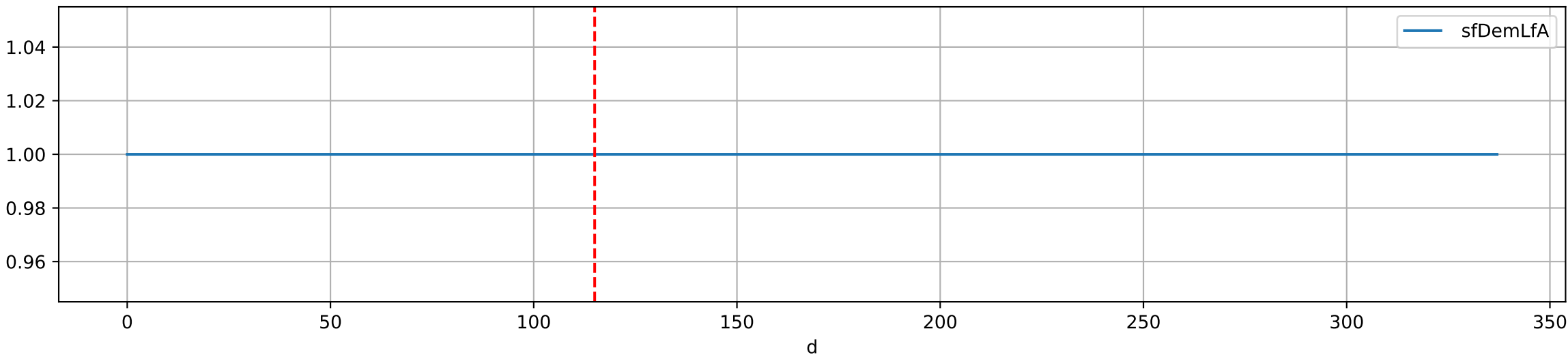
Plot Env Data



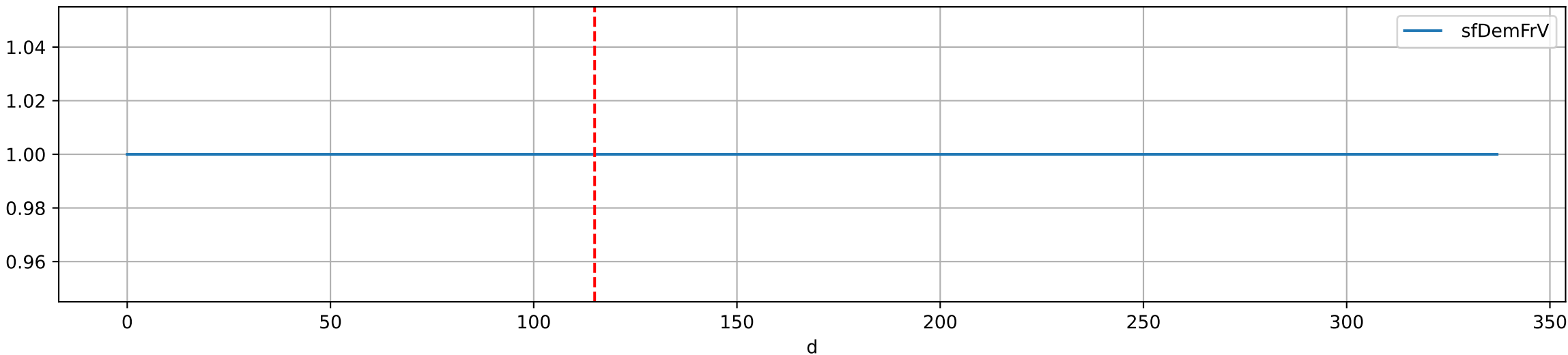
Plot [['sfTemp', 'sfInit', 'sfDev', 'sfDem']]



Plot ['sfDemLfA']



Plot ['sfDemFrV']





Plot EnvOpt Decision

