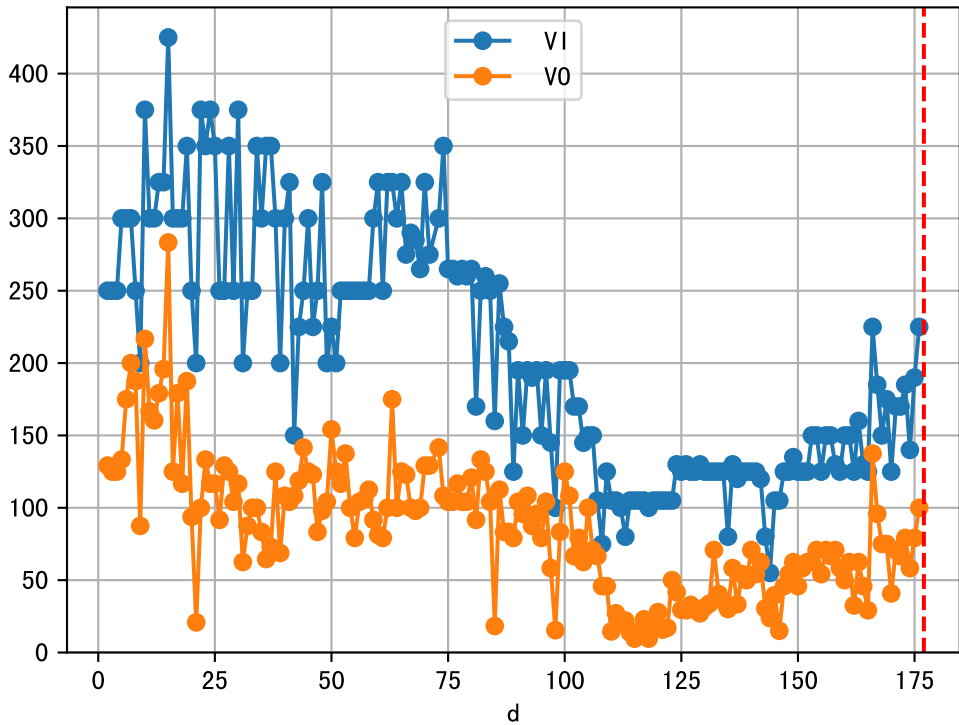
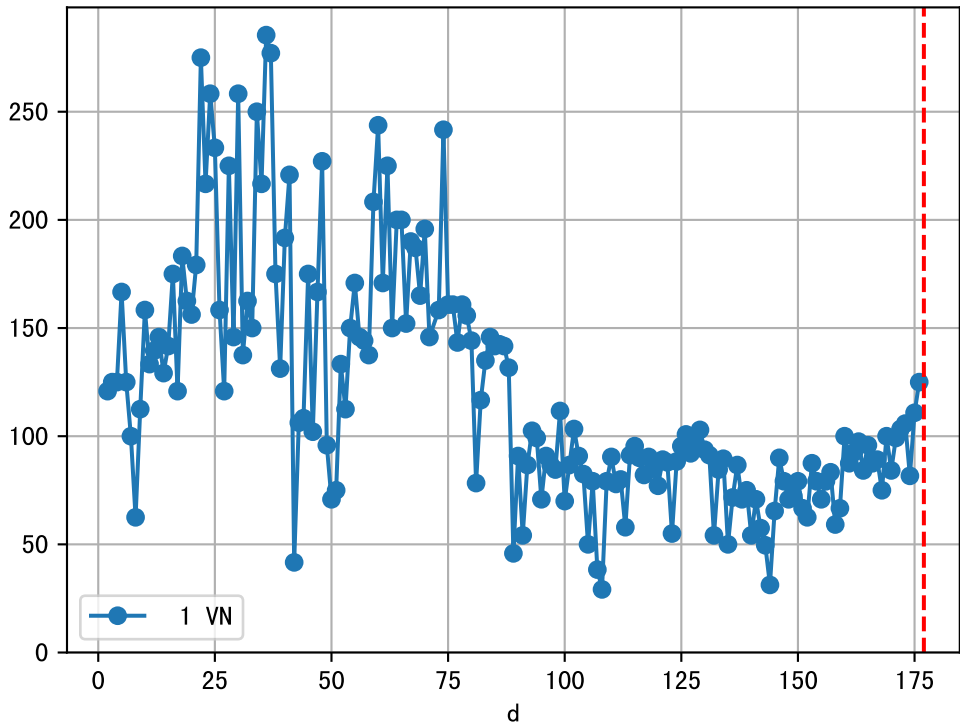
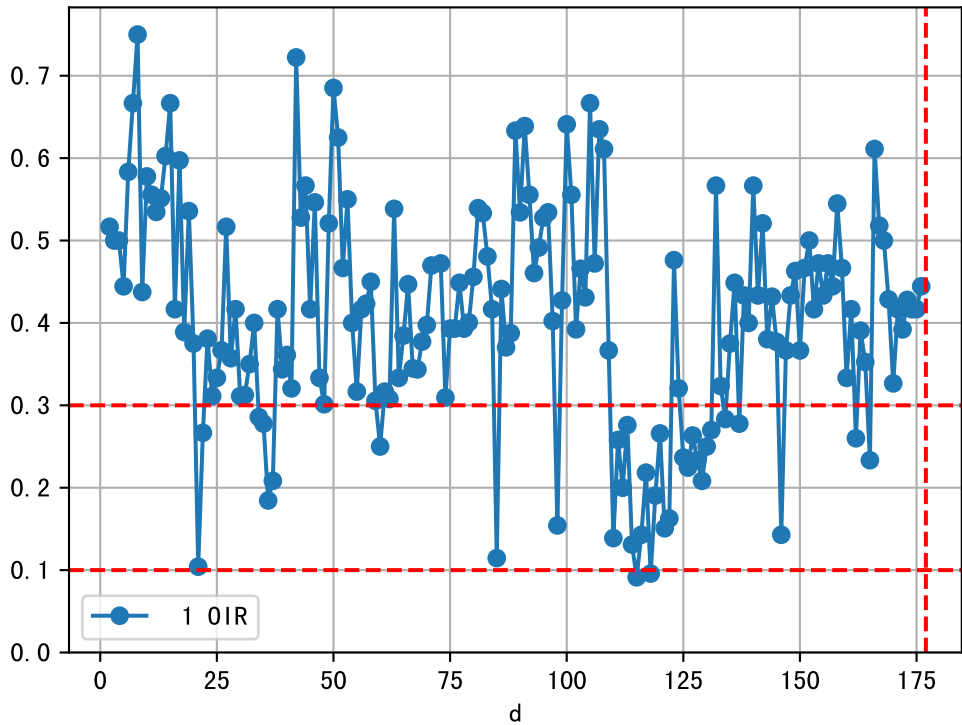


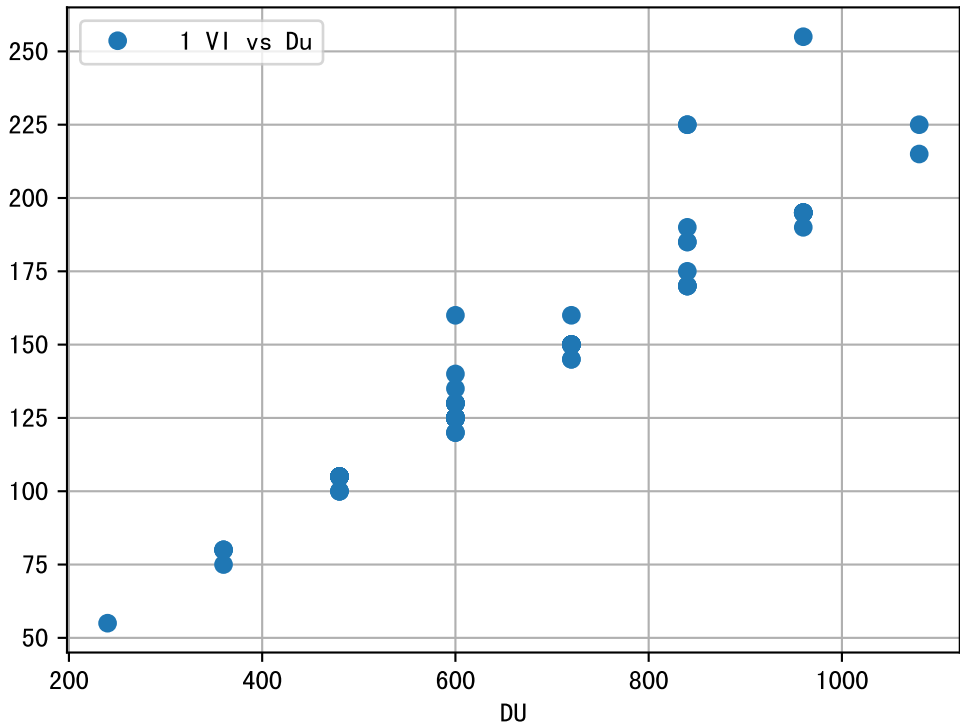
FgArea: [ ' 0' ]  
NC11 P2-3  
2026-02-20 (Day 177)

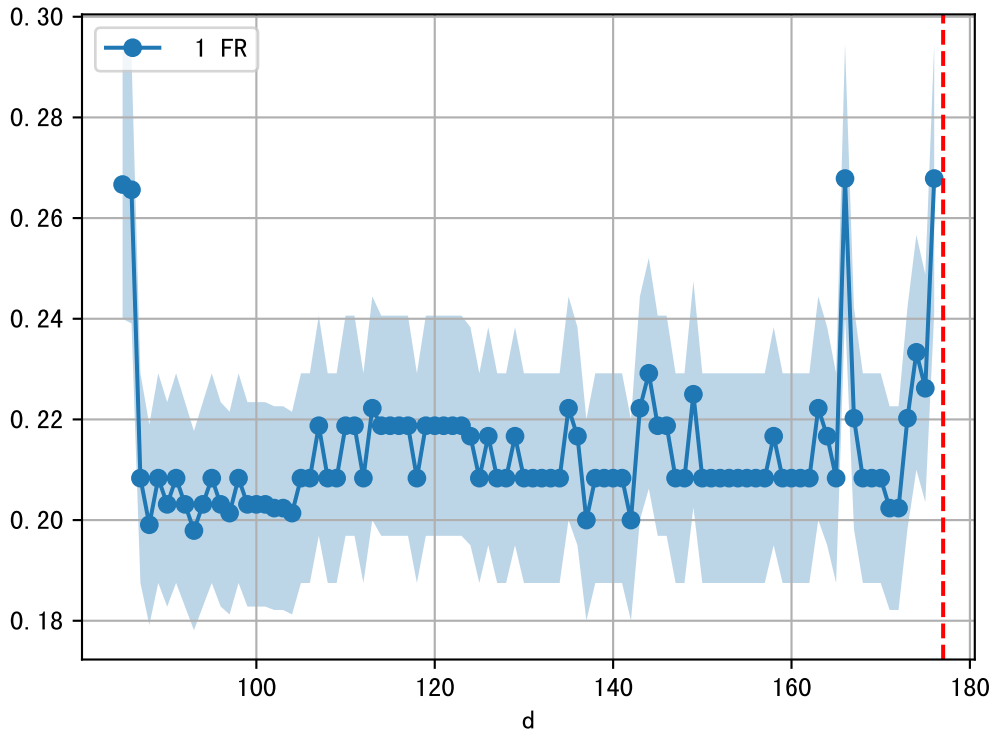
fgNum 1 (at\_row = 4)

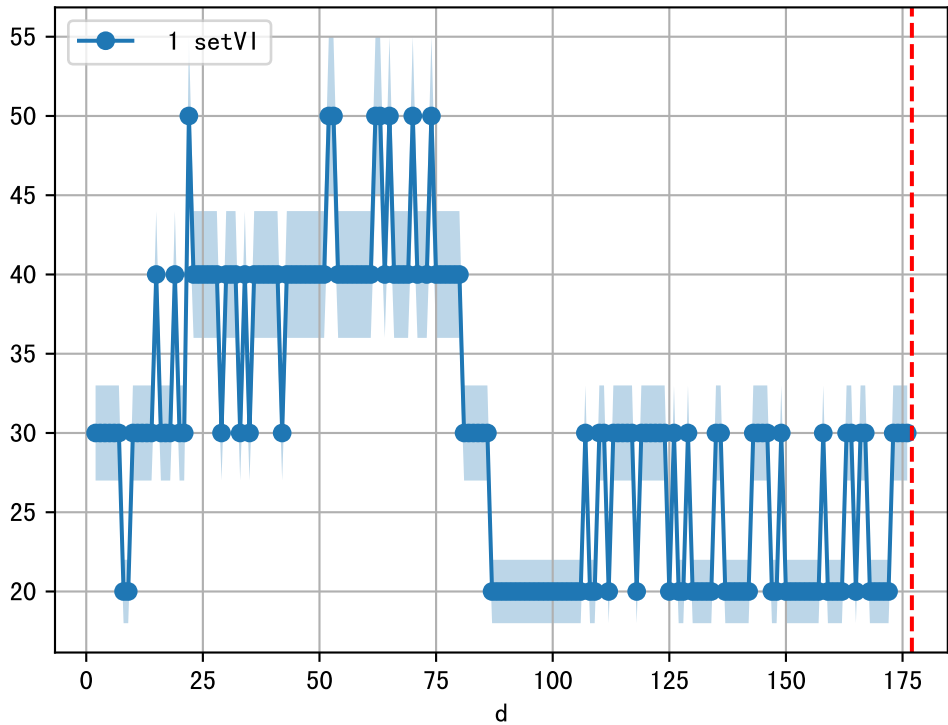




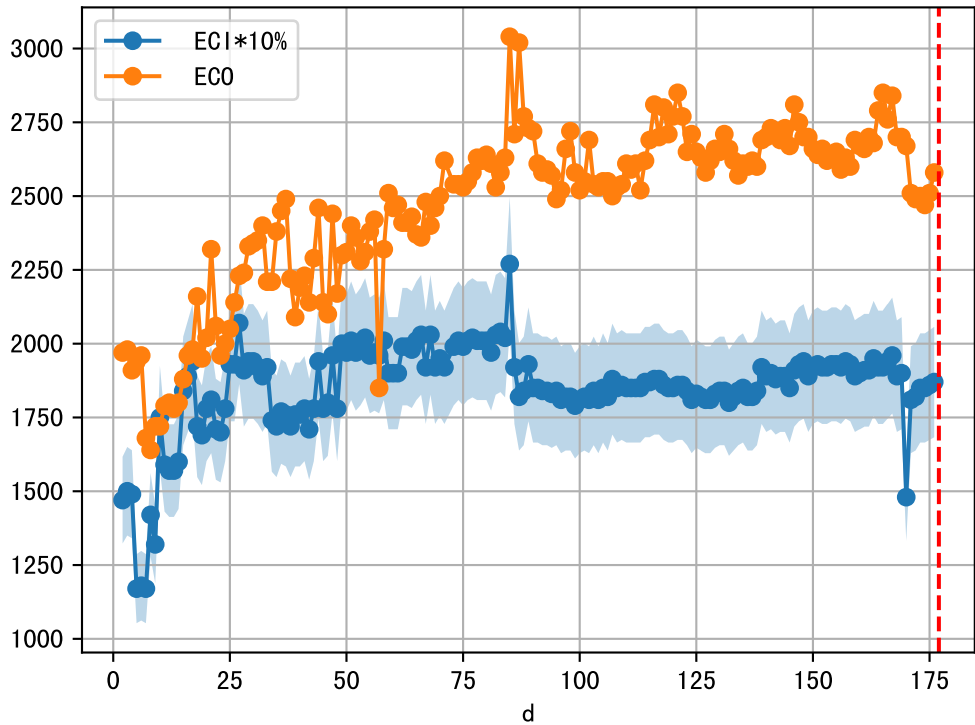


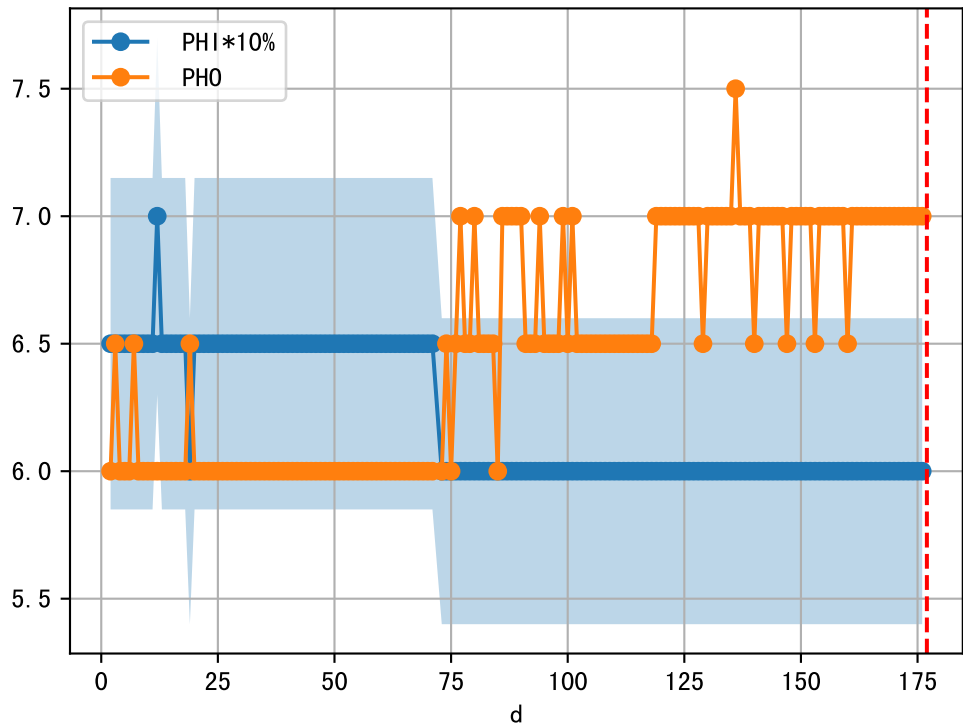




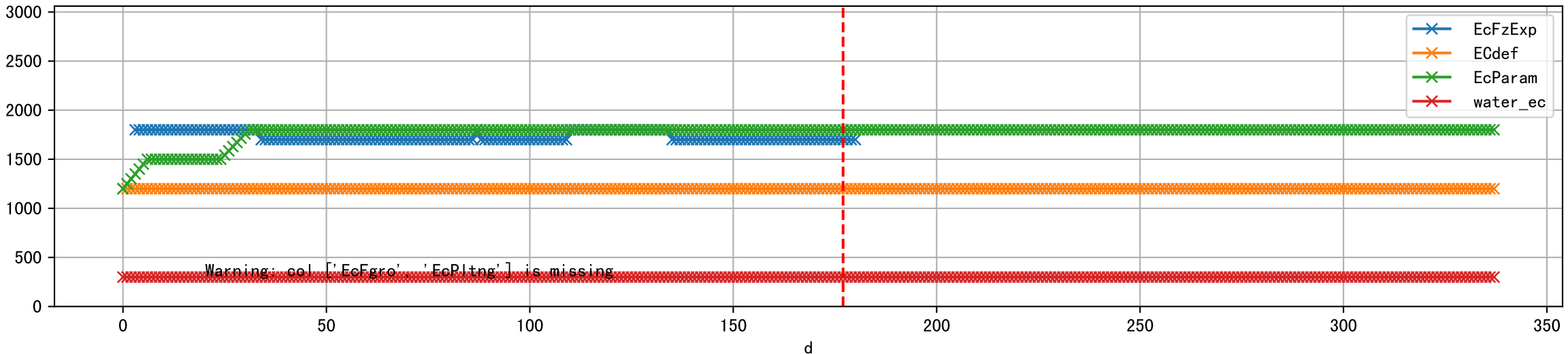


1 (fgArea = NA)

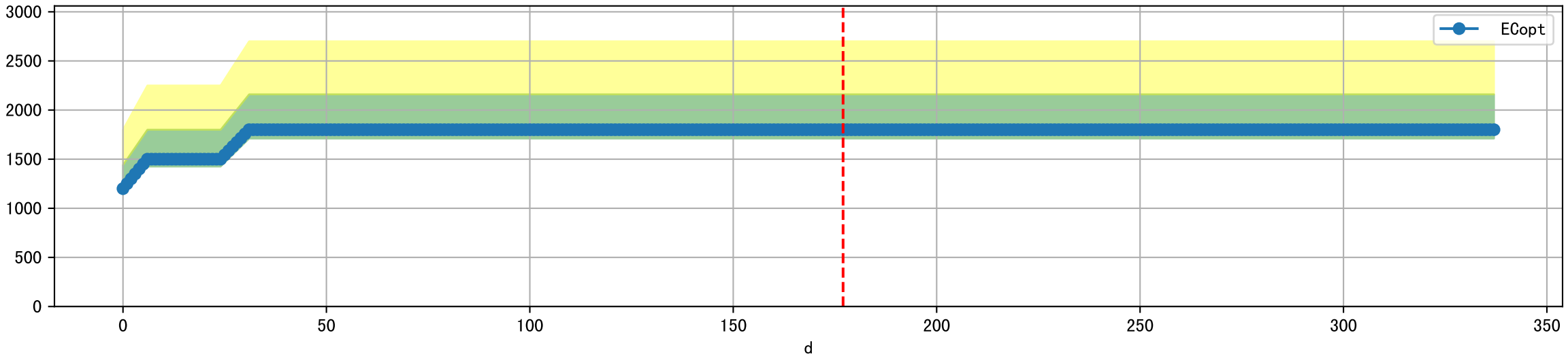




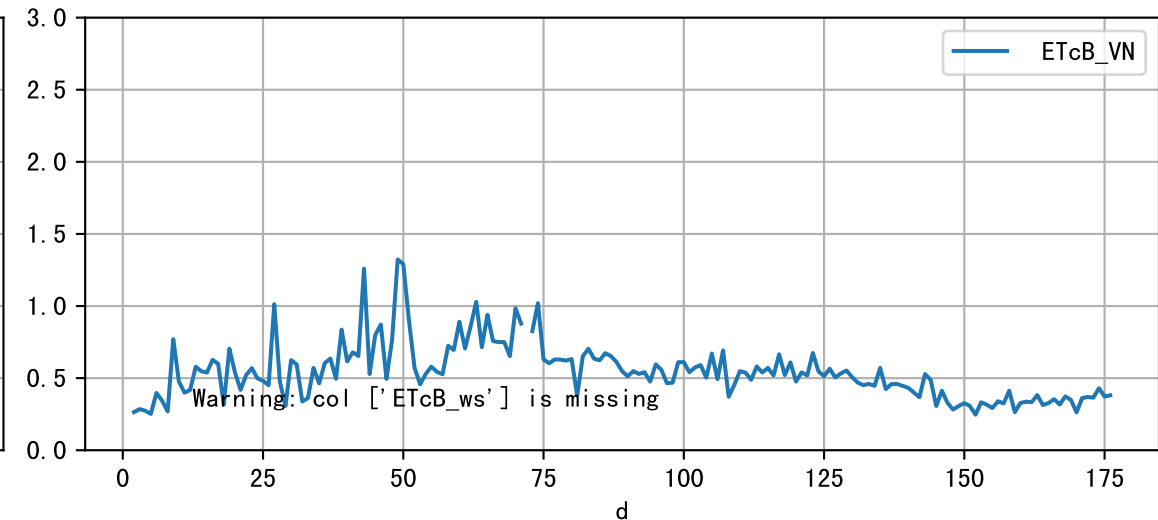
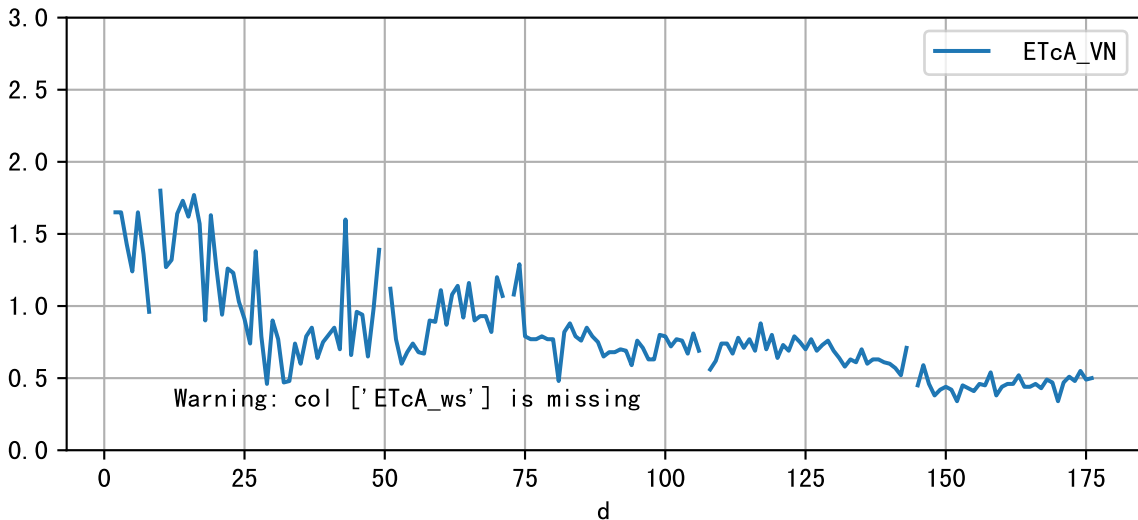
Plot [['EcFgro', 'EcFzExp', 'EcPltng', 'ECdef', 'EcParam', 'water\_ec']]



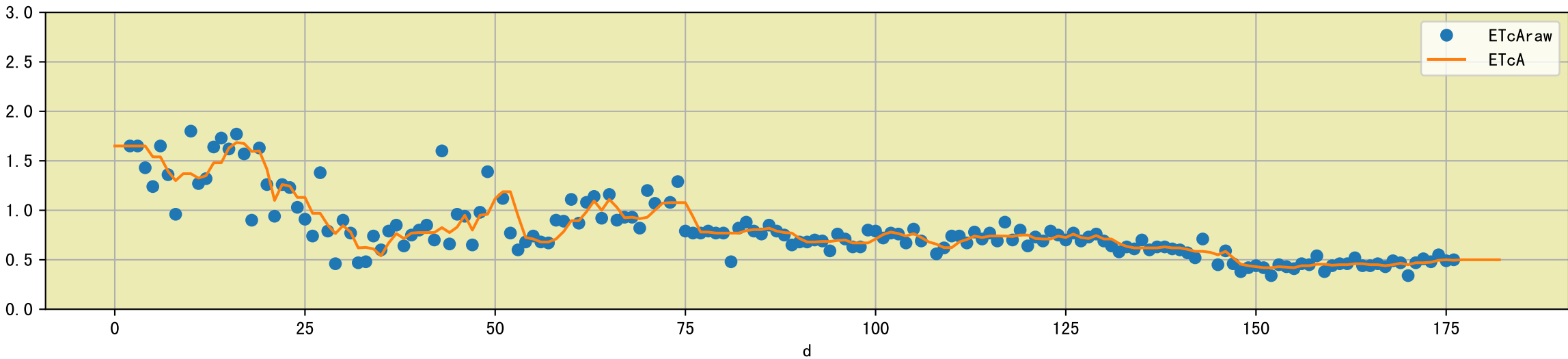
Plot [' ECopt ']



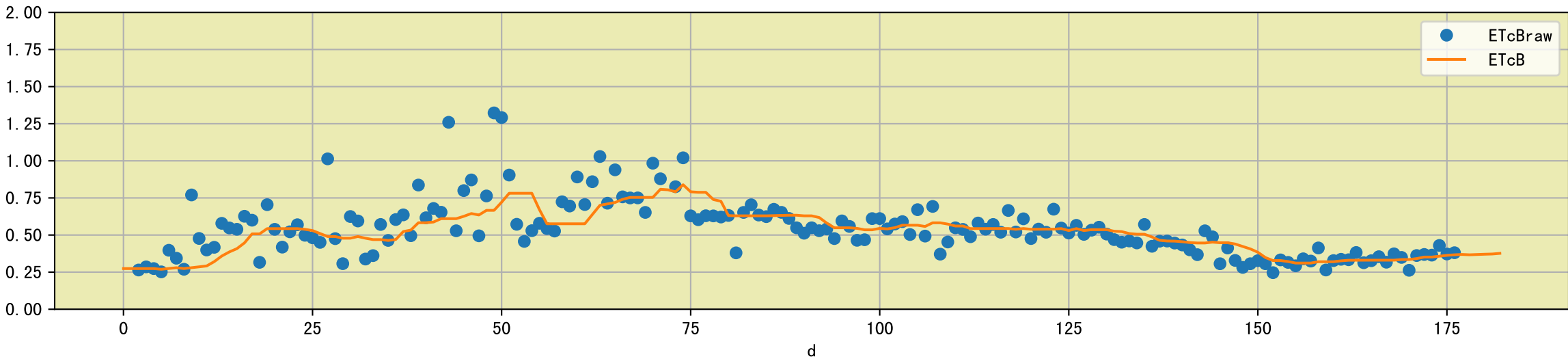
Plot [['ETcA\_VN', 'ETcA\_ws'], ['ETcB\_VN', 'ETcB\_ws']]

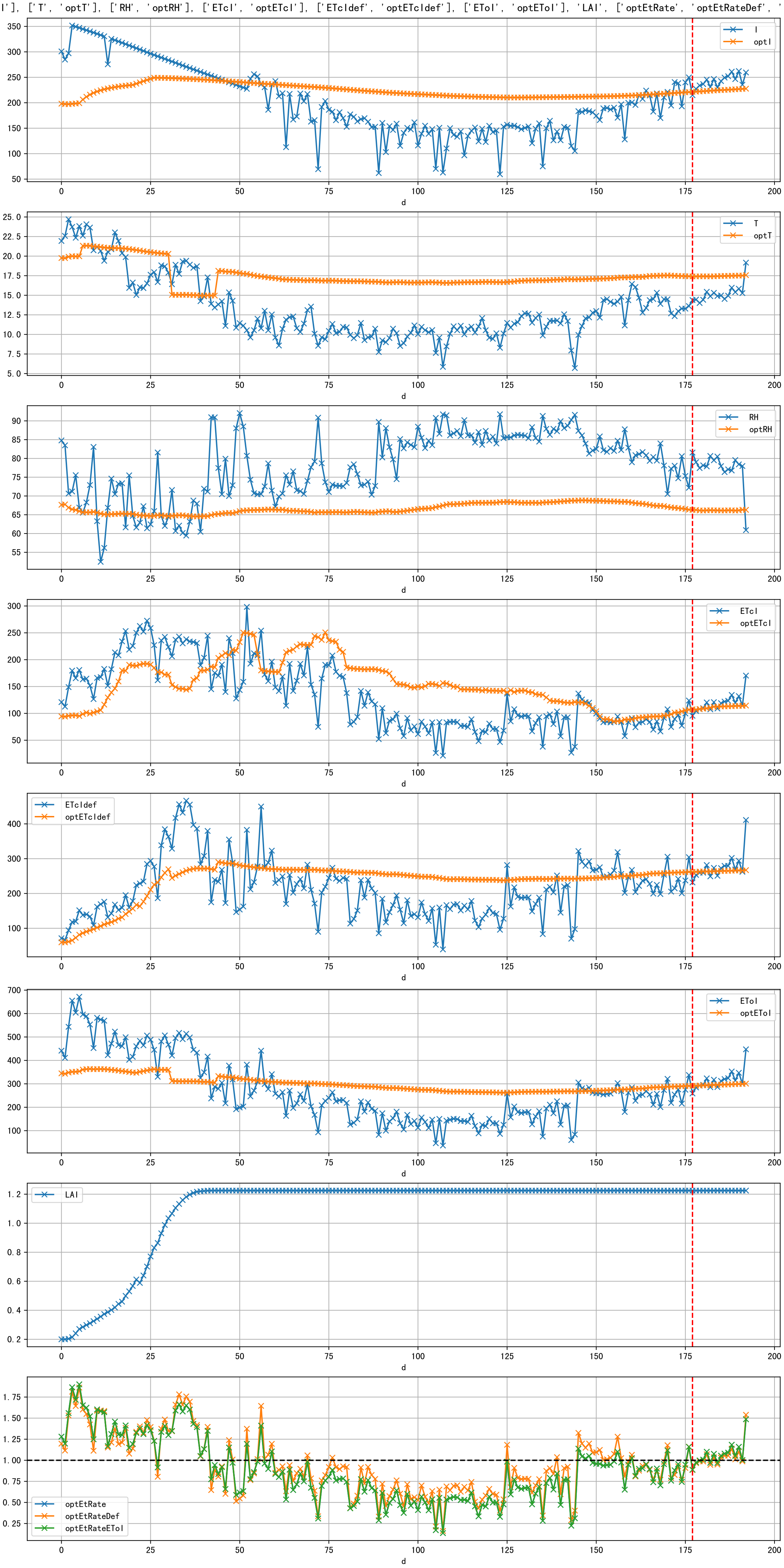


Plot [['ETcAraw:o', 'ETcA']]

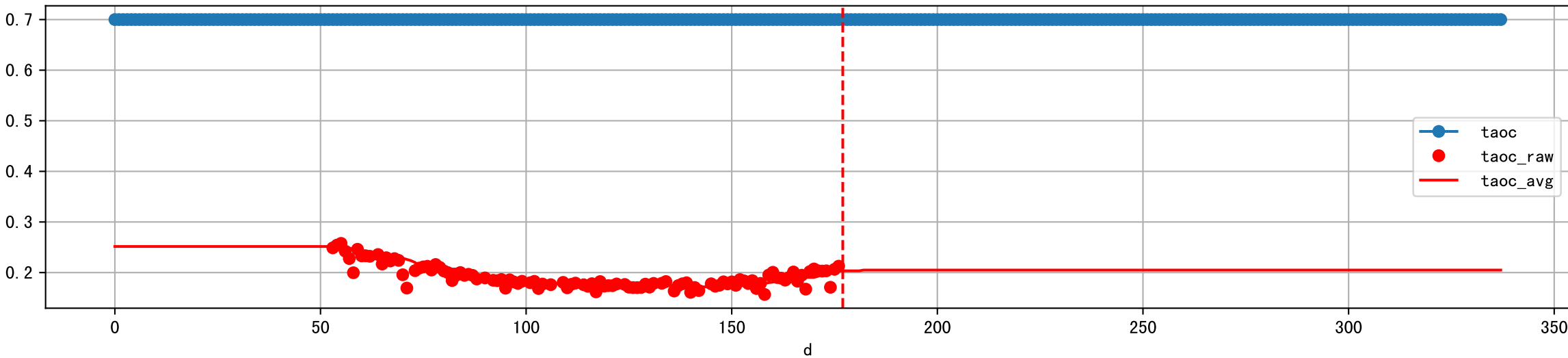


Plot [['ETcBraw:o', 'ETcB']]

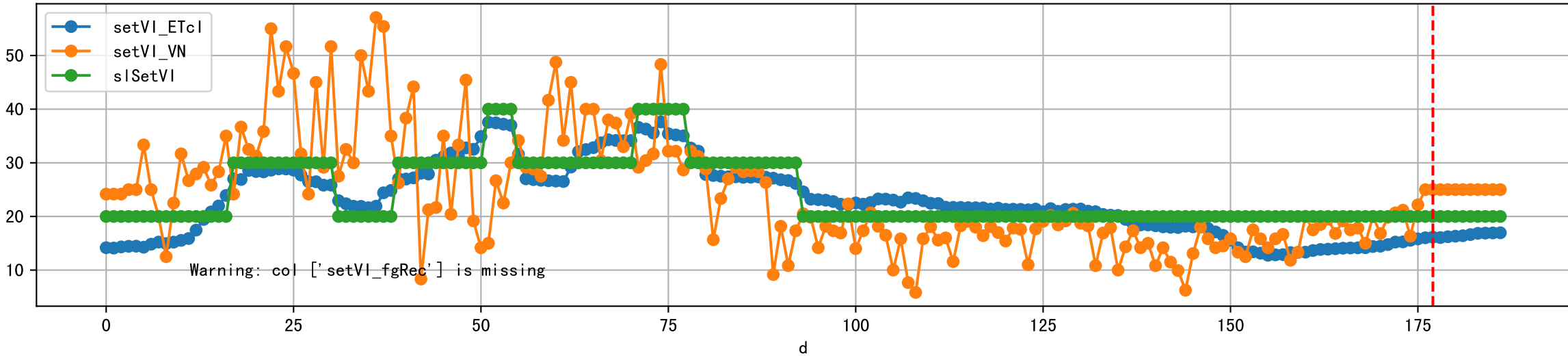




Plot [['taoc', 'taoc\_raw:ro', 'taoc\_avg:r-']]

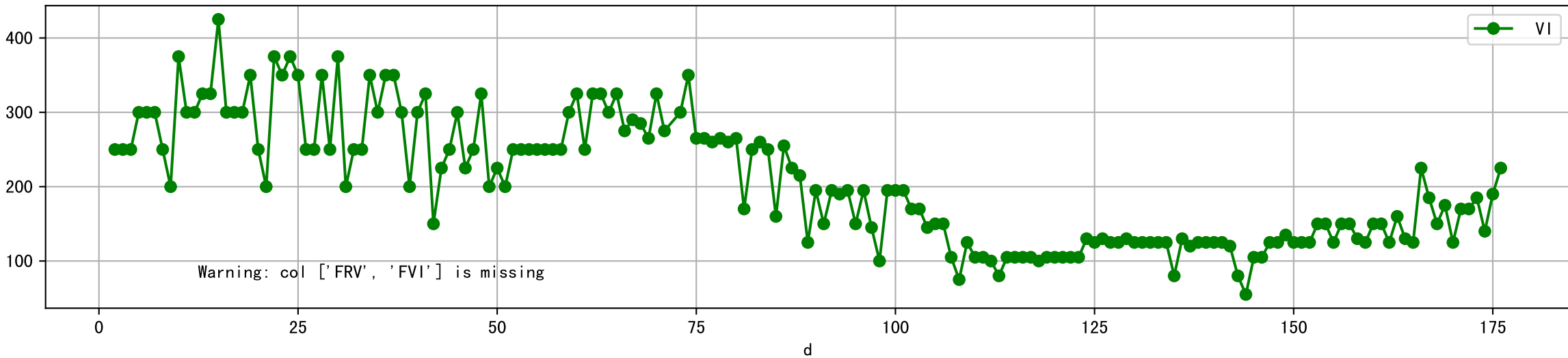


Plot [['setVI\_ETcI', 'setVI\_fgRec', 'setVI\_VN', 'sISetVI']]

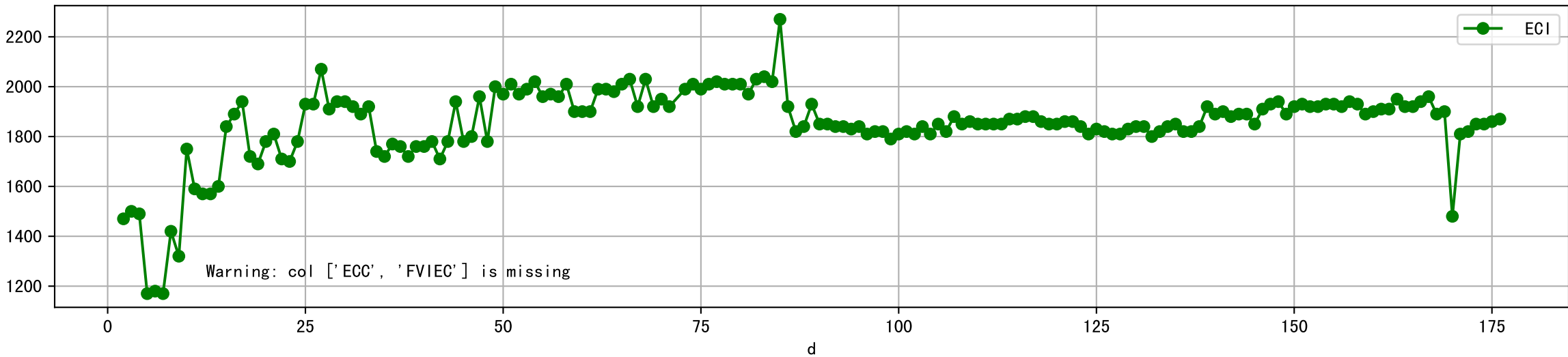




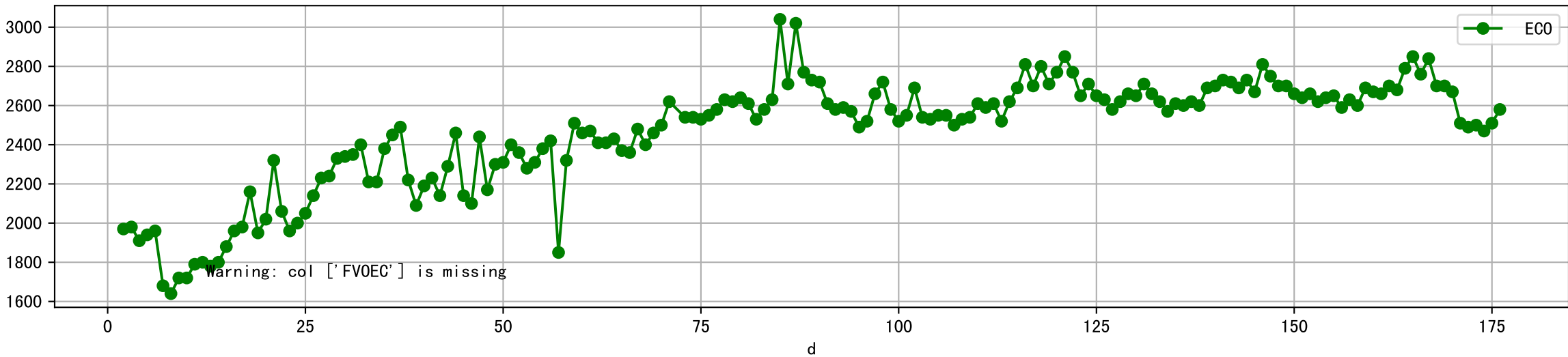
Plot [['FRV:b-o', 'FVI:r-o', 'VI:g-o']]



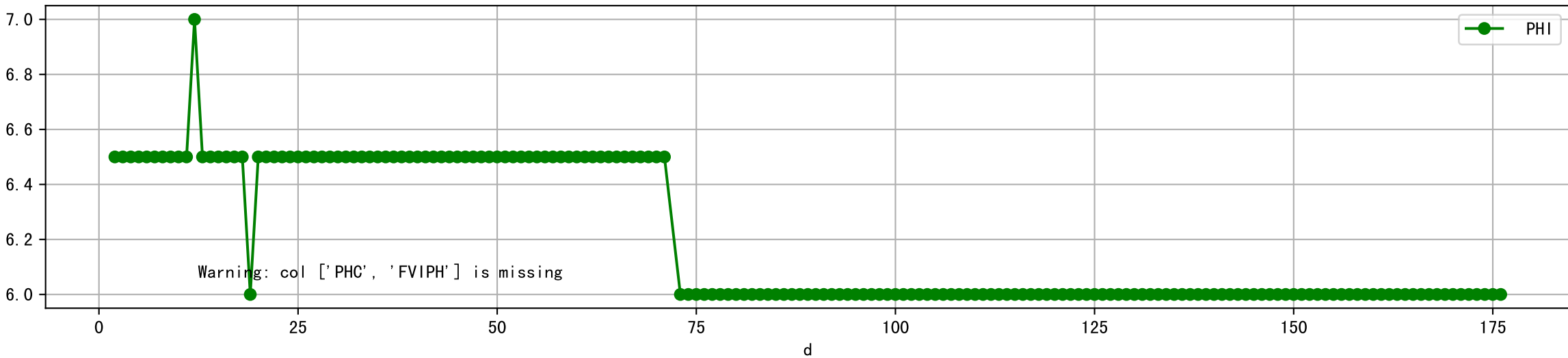
Plot [['ECC:b-o', 'FVIEC:r-o', 'ECI:g-o']]



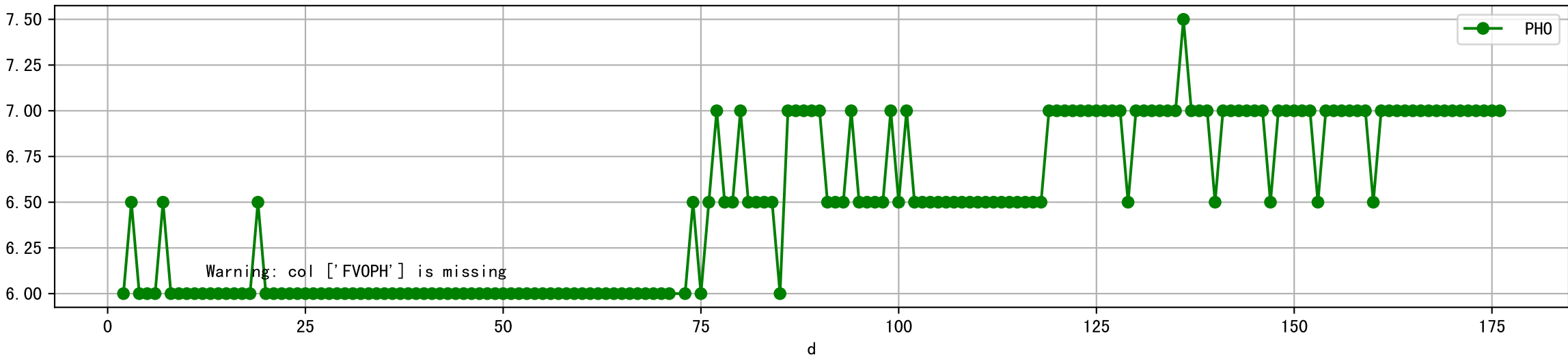
Plot [[' FV0EC:r-o' , ' ECO:g-o' ]]



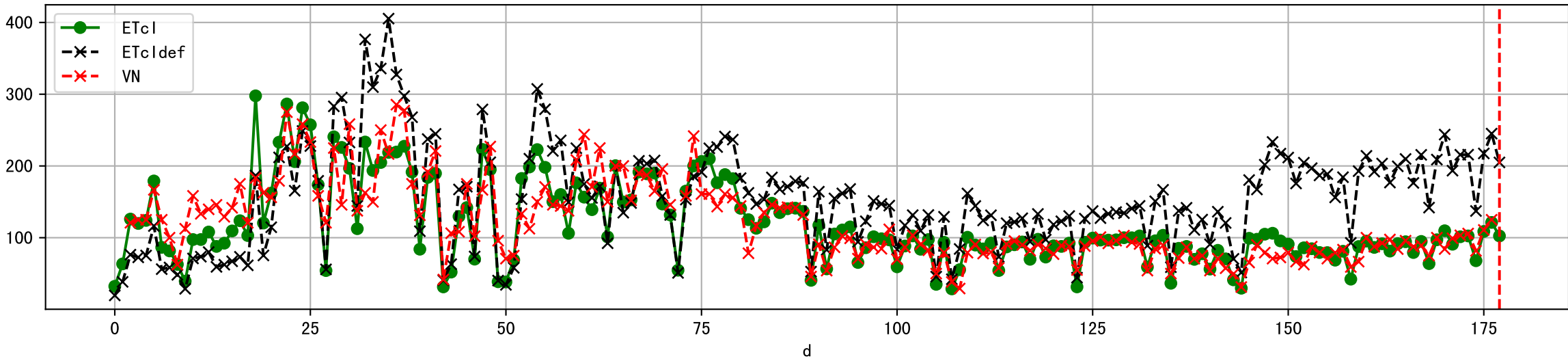
Plot [['PHC:b-o', 'FVIPH:r-o', 'PHI:g-o']]



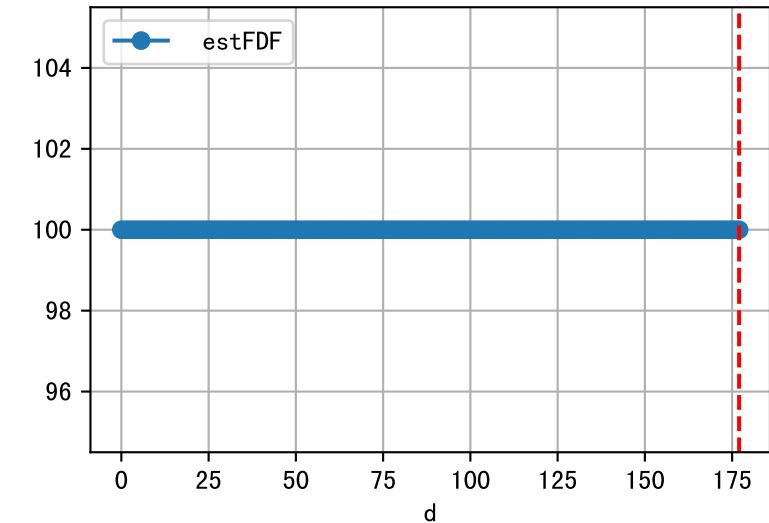
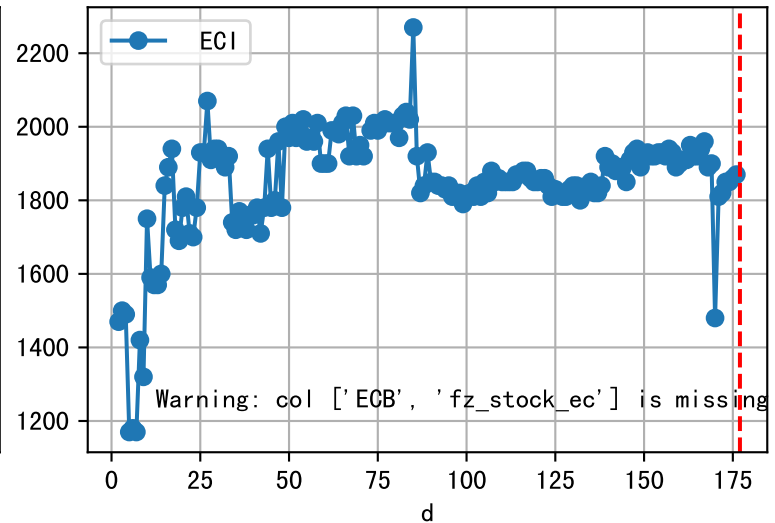
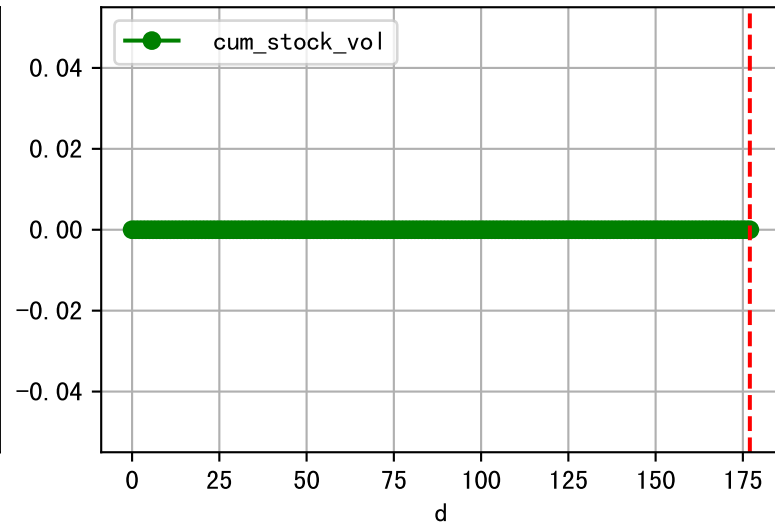
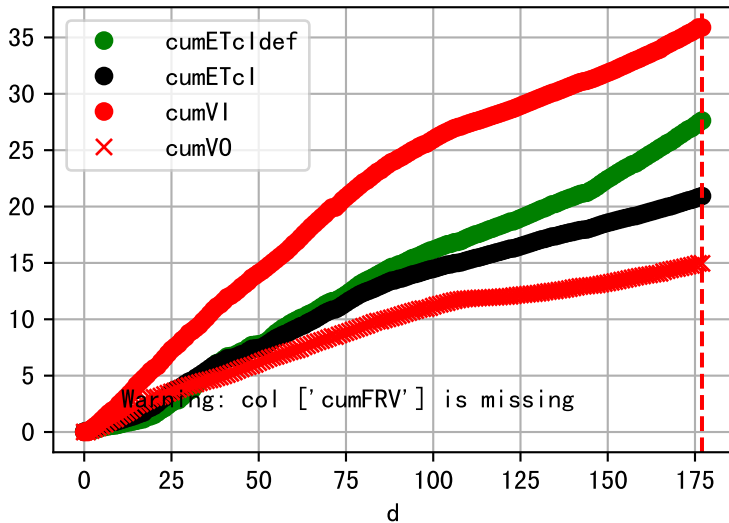
Plot [[' FVOPH:r-o', ' PHO:g-o' ]]



Plot ET/VN



Plot Fv and fertilizer usage

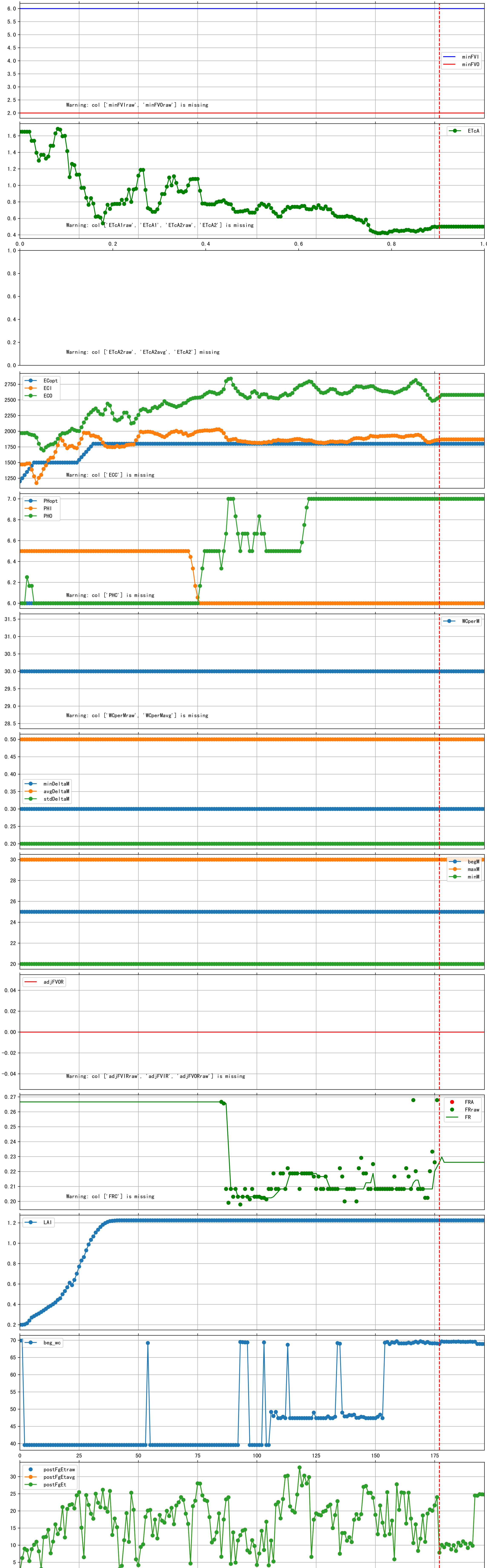




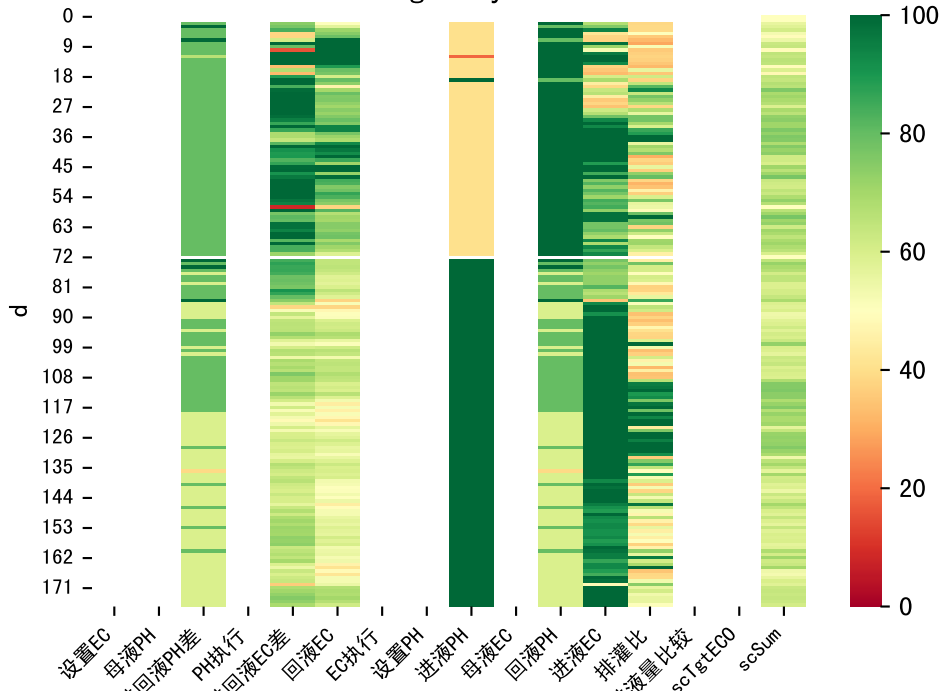
Fertilizer Range Source: kerleyL, kerleyH, UnivFL, TNAI, Haifa

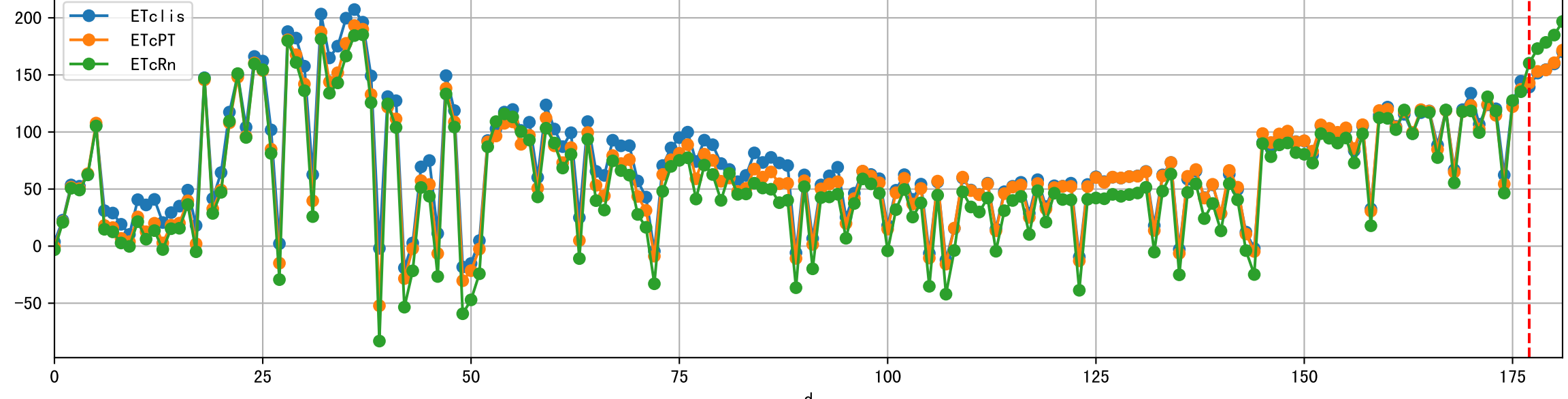
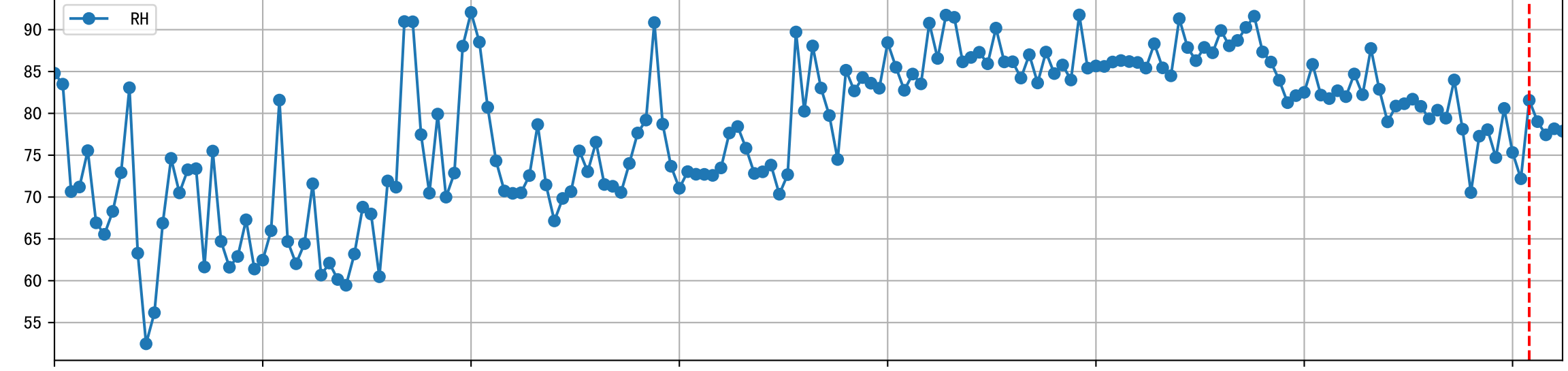
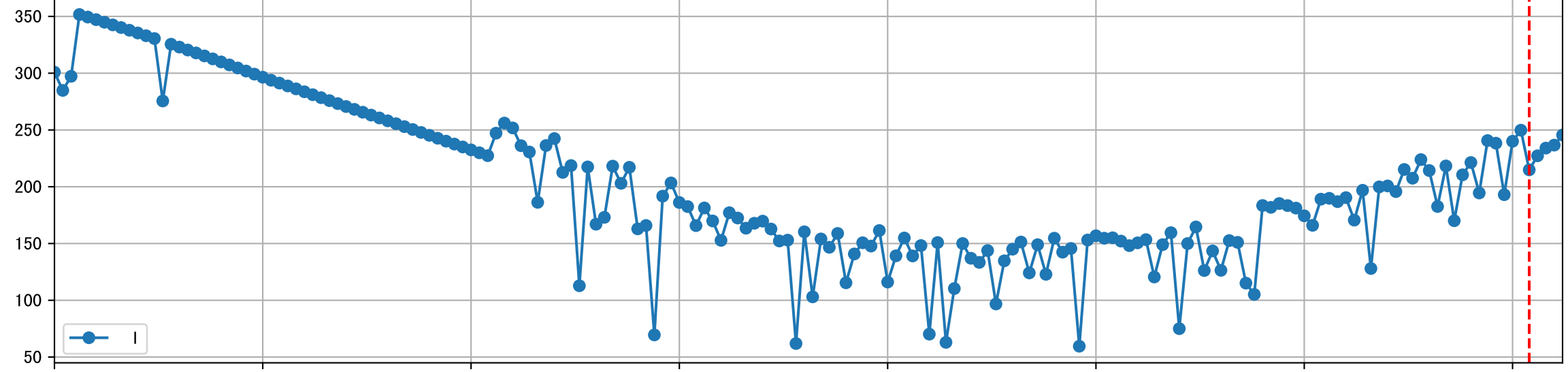
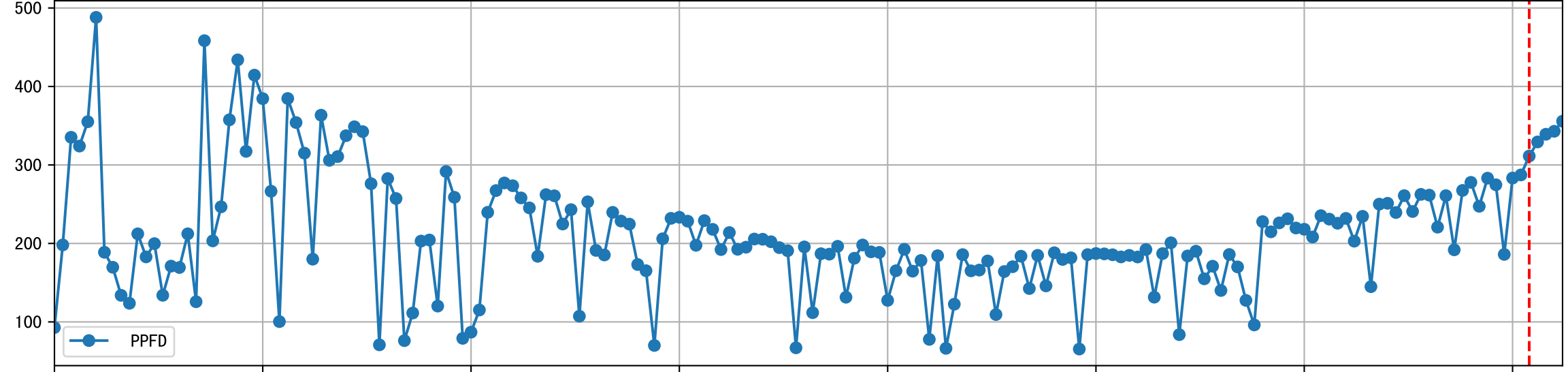
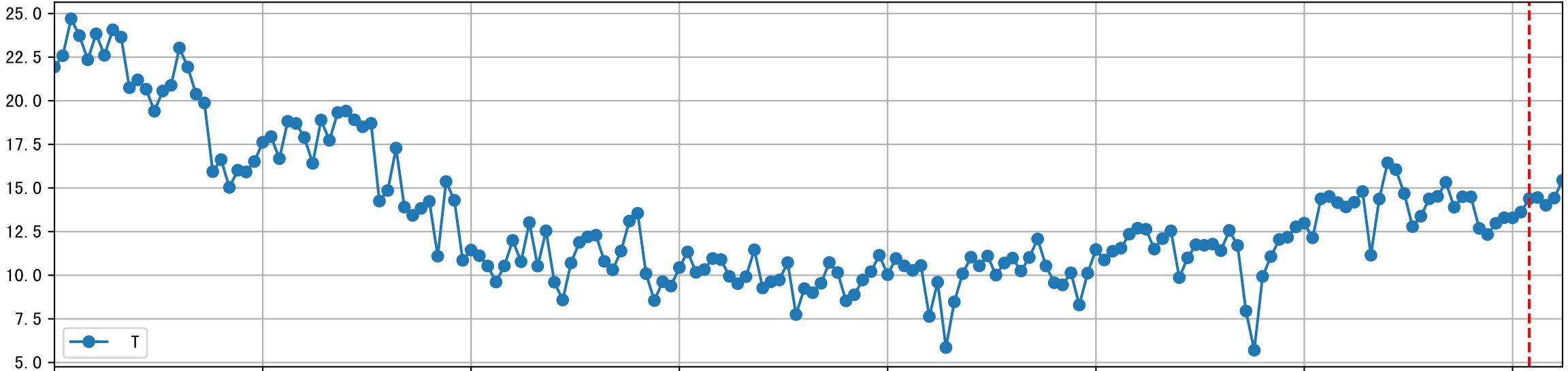
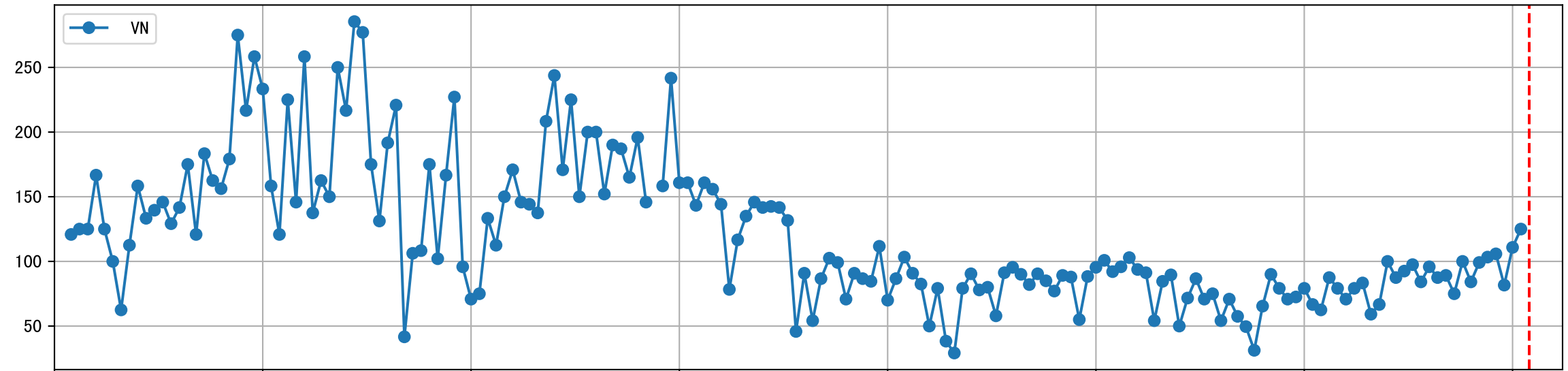
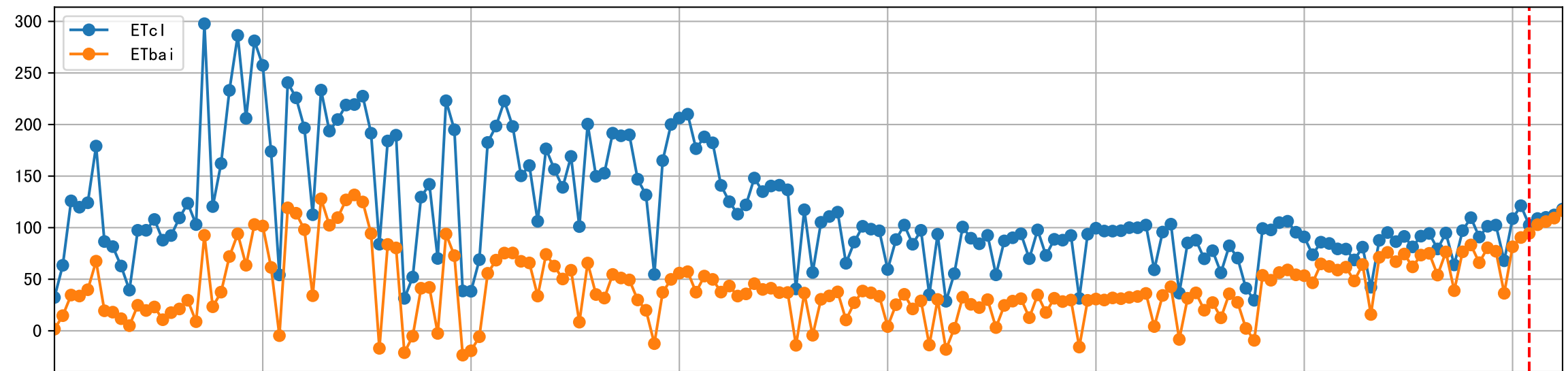


Trend plot for P2-3\_0

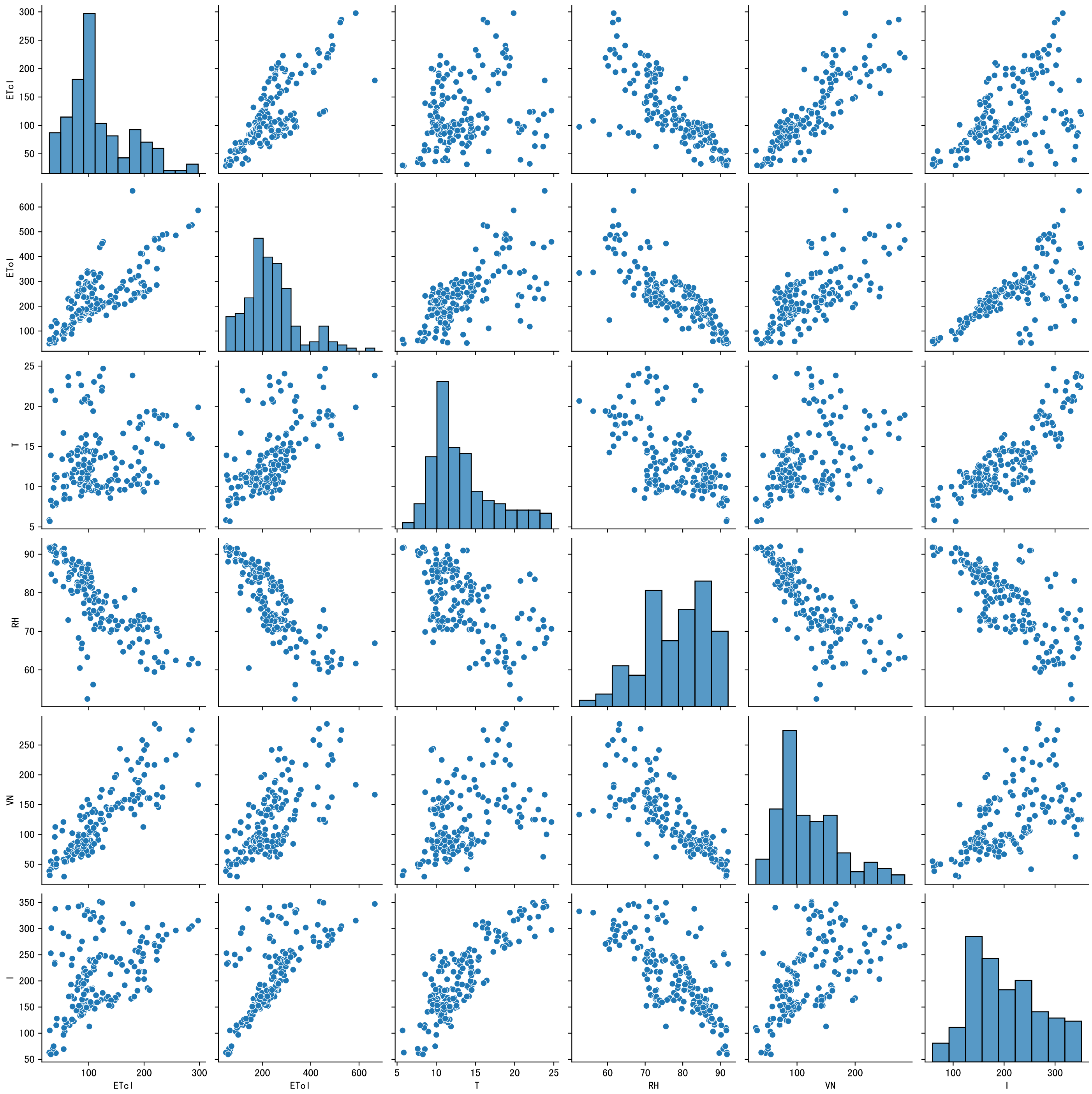


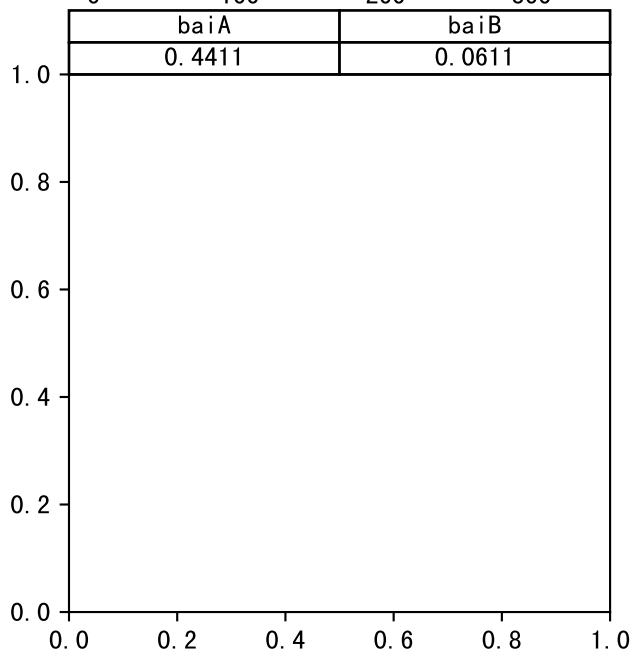
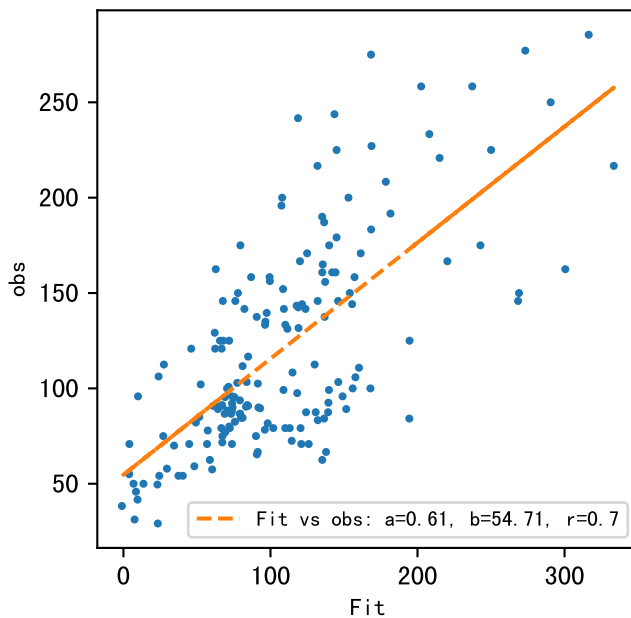
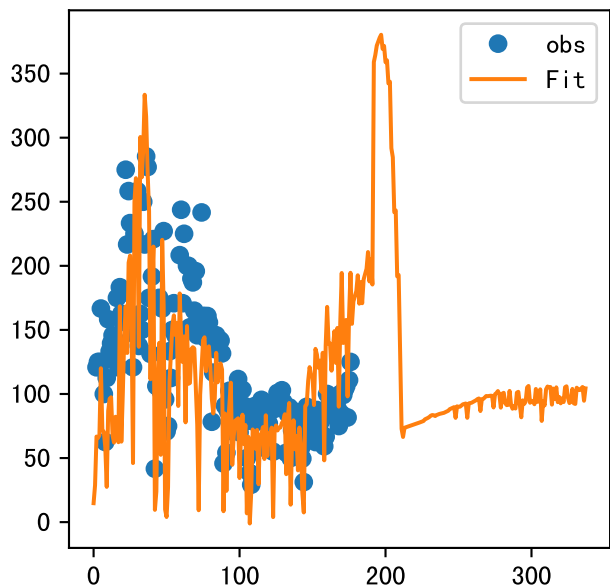
# FgDaily

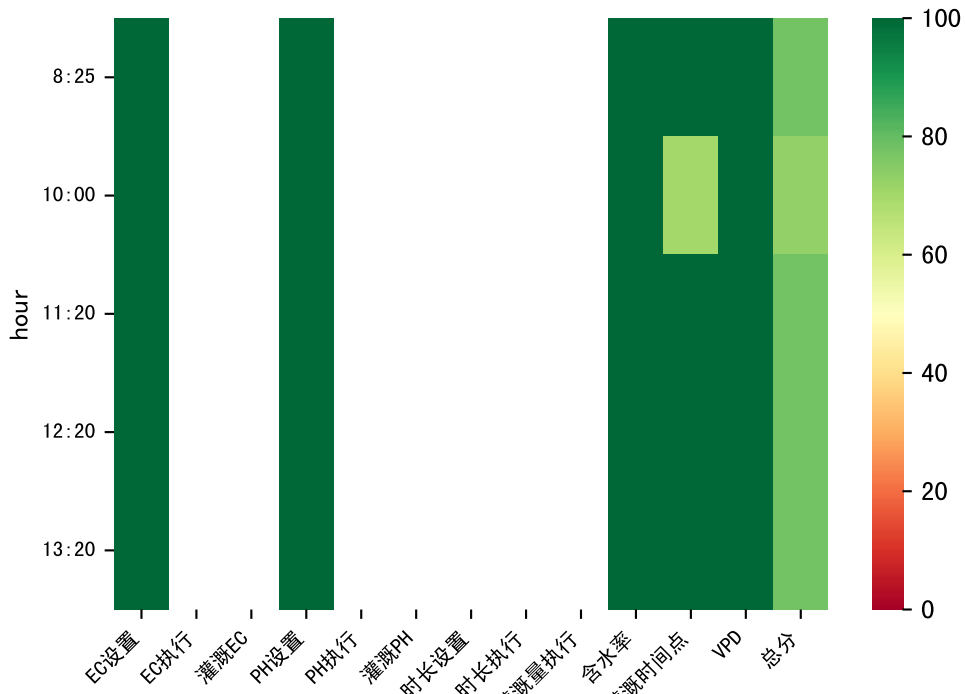




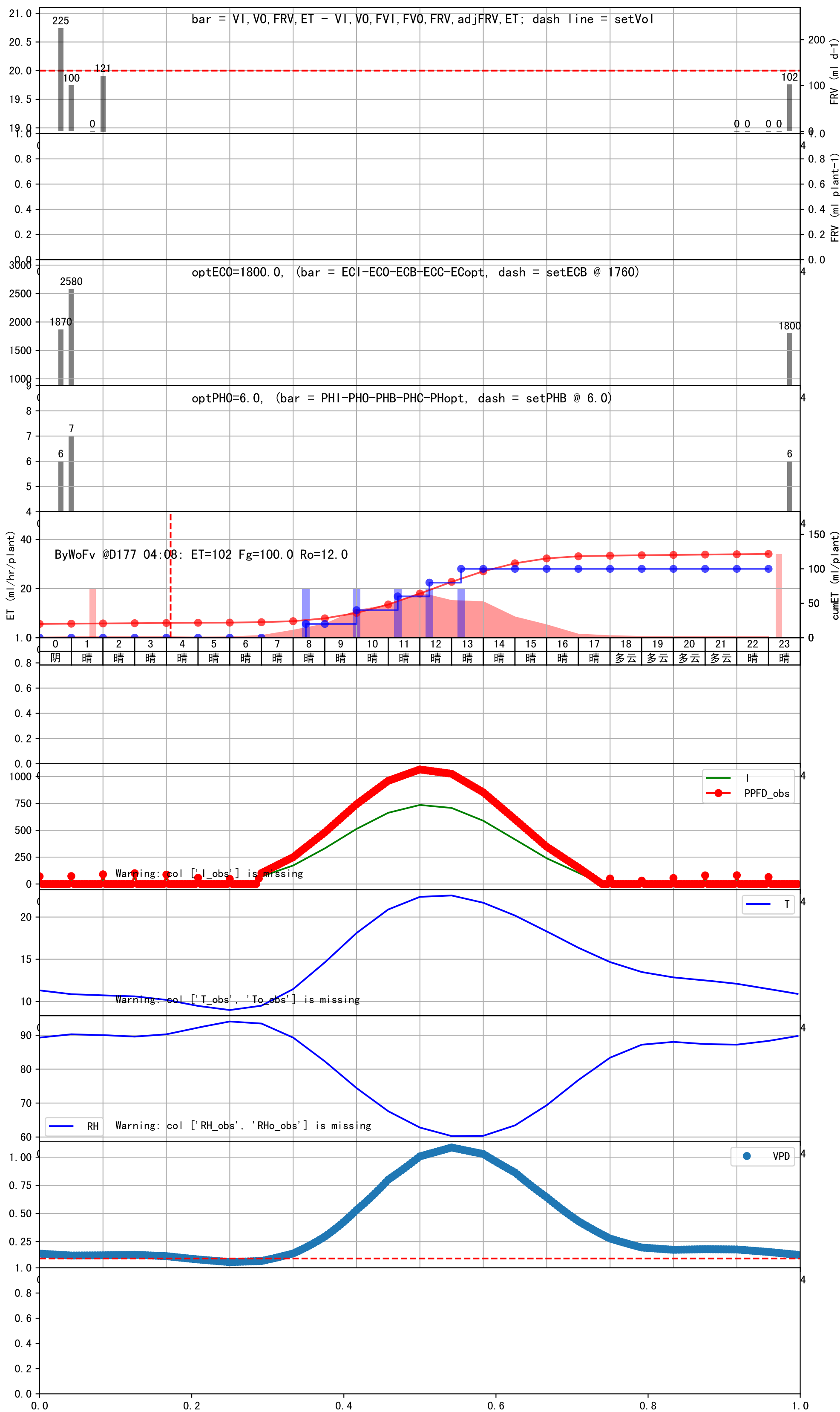






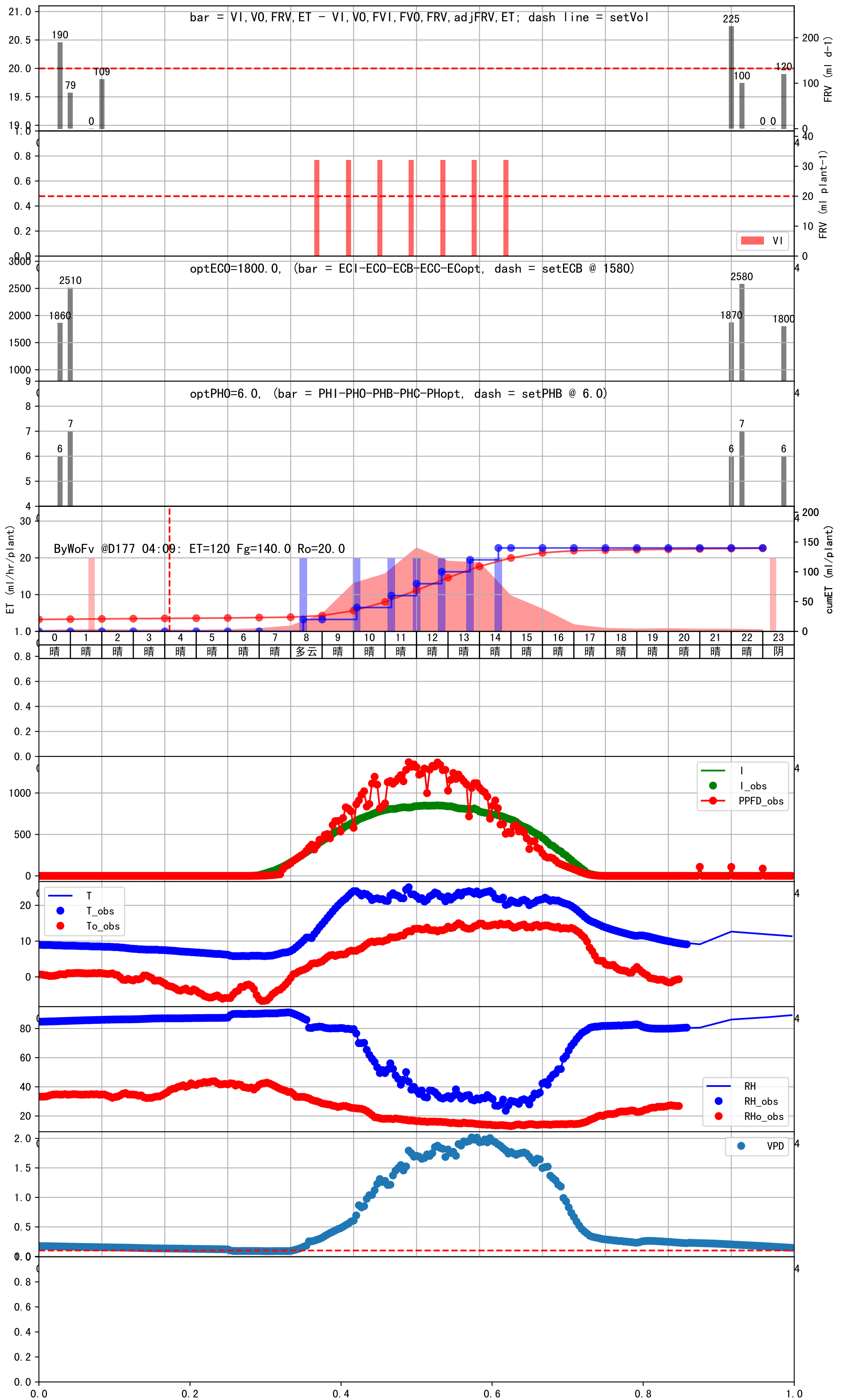


时间	灌溉时长(秒)	灌溉量(毫升/株)	灌溉总量(方/次)	天气	注释
08:25	87	20.0	0.01	晴	预期@08:25 手动 (未用传感器)
10:00	87	20.0	0.01	晴	预期@10:00 手动 (未用传感器)
11:20	87	20.0	0.01	晴	预期@11:20 手动 (未用传感器)
12:20	87	20.0	0.01	晴	预期@12:20 手动 (未用传感器)
13:20	87	20.0	0.01	晴	预期@13:20 手动 (未用传感器)
总计	435.0 (5次)	100.0			建议进液EC: 1760, PH: 6.0



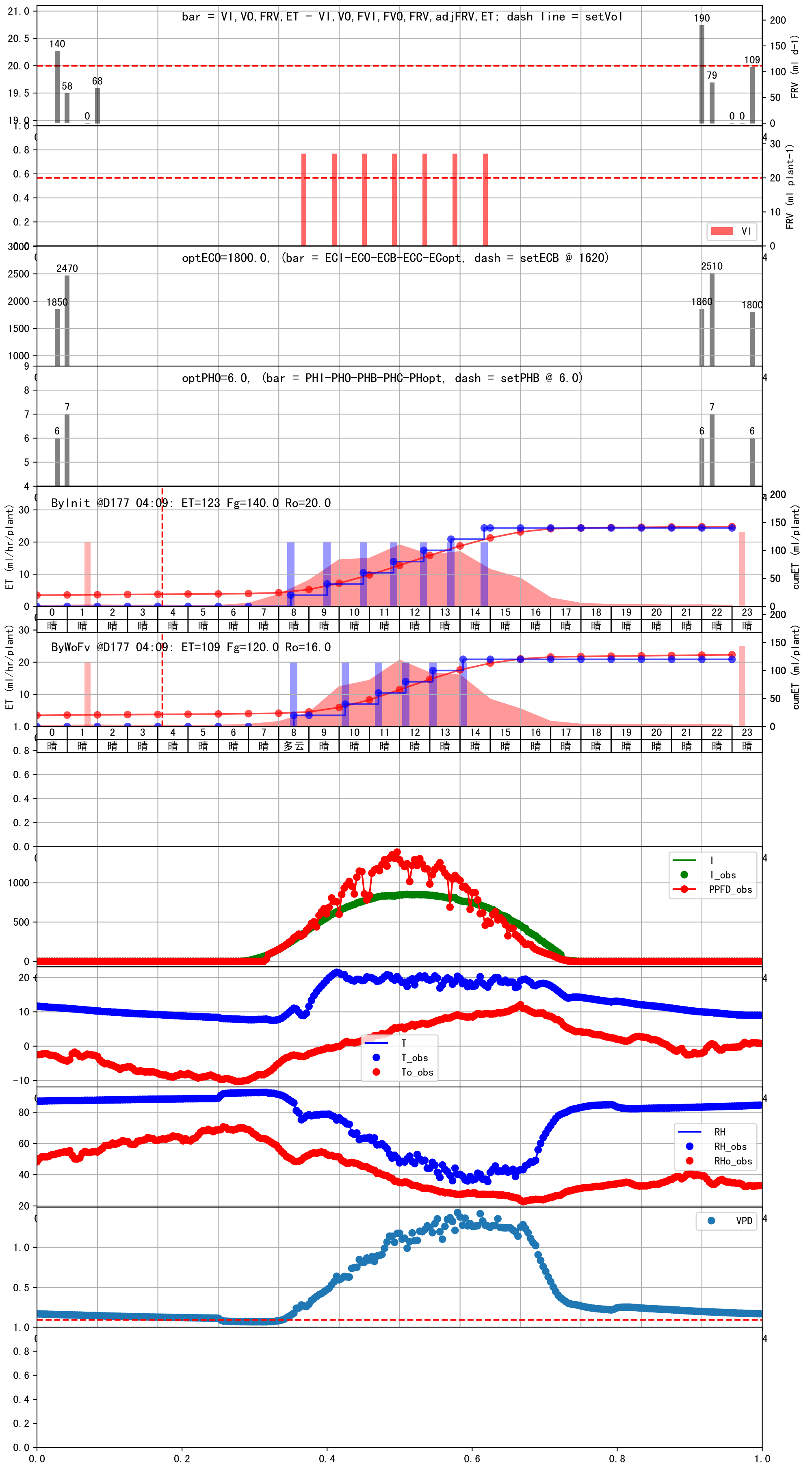


时间	灌溉时长(秒)	灌溉量(毫升/株)	灌溉总量(方/次)	天气	注释
08:25	91	20.0	0.01	多云	假设@08:25 未知程序 (未用传感器)
10:05	91	20.0	0.01	晴	假设@10:05 未知程序 (未用传感器)
11:10	91	20.0	0.01	晴	假设@11:10 未知程序 (未用传感器)
12:00	91	20.0	0.01	晴	假设@12:00 未知程序 (未用传感器)
12:50	91	20.0	0.01	晴	假设@12:50 未知程序 (未用传感器)
13:40	91	20.0	0.01	晴	假设@13:40 未知程序 (未用传感器)
14:35	91	20.0	0.01	晴	假设@14:35 未知程序 (未用传感器)
总计	637.0 (7次)	140.0			建议进液EC: 1580, PH: 6.0



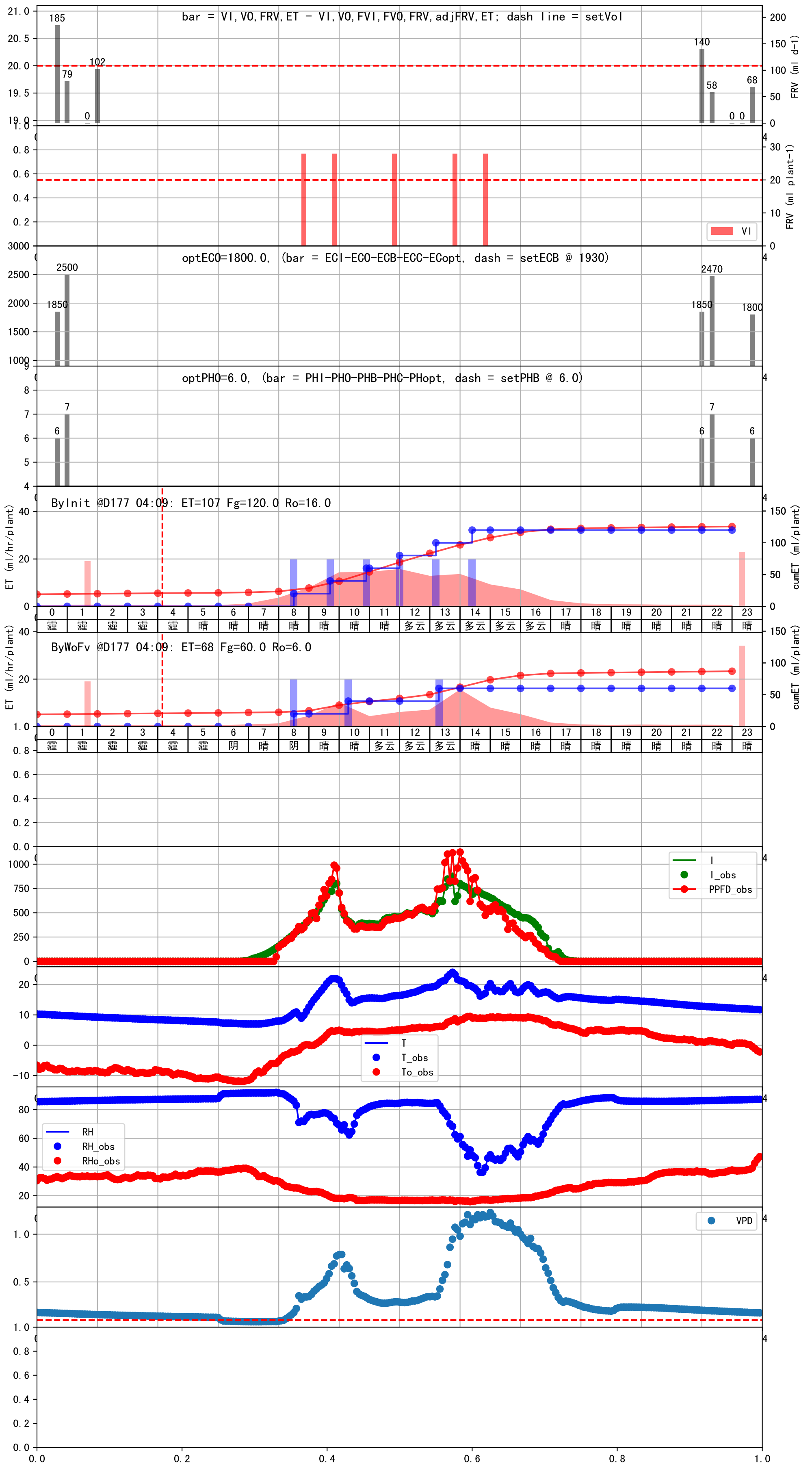


时间	灌溉时长(秒)	灌溉量(毫升/株)	灌溉总量(方/次)	天气	注释
08:30	95	20.0	0.01	多云	假设@08:30 未知程序 (未用传感器)
10:10	95	20.0	0.01	晴	假设@10:10 未知程序 (未用传感器)
11:20	95	20.0	0.01	晴	假设@11:20 未知程序 (未用传感器)
12:10	95	20.0	0.01	晴	假设@12:10 未知程序 (未用传感器)
13:05	95	20.0	0.01	晴	假设@13:05 未知程序 (未用传感器)
14:05	95	20.0	0.01	晴	假设@14:05 未知程序 (未用传感器)
总计	570.0 (6次)	120.0			建议进液EC: 1620, PH: 6.0





时间	灌溉时长(秒)	灌溉量(毫升/株)	灌溉总量(方/次)	天气	注释
08:30	95	20.0	0.01	阴	假设@08:30 未知程序(未用传感器)
10:20	95	20.0	0.01	晴	假设@10:20 未知程序(未用传感器)
13:20	95	20.0	0.01	多云	假设@13:20 未知程序(未用传感器)
总计	285.0 (3次)	60.0			建议进液EC: 1930, PH: 6.0





时间	灌溉时长(秒)	灌溉量(毫升/株)	灌溉总量(方/次)	天气	注释
08:30	95	20.0	0.01	多云	假设@08:30 未知程序 (未用传感器)
10:35	95	20.0	0.01	晴	假设@10:35 未知程序 (未用传感器)
11:40	95	20.0	0.01	晴	假设@11:40 未知程序 (未用传感器)
12:35	95	20.0	0.01	晴	假设@12:35 未知程序 (未用传感器)
13:35	95	20.0	0.01	晴	假设@13:35 未知程序 (未用传感器)
总计	475.0 (5次)	100.0			建议进液EC: 1640, PH: 6.0

