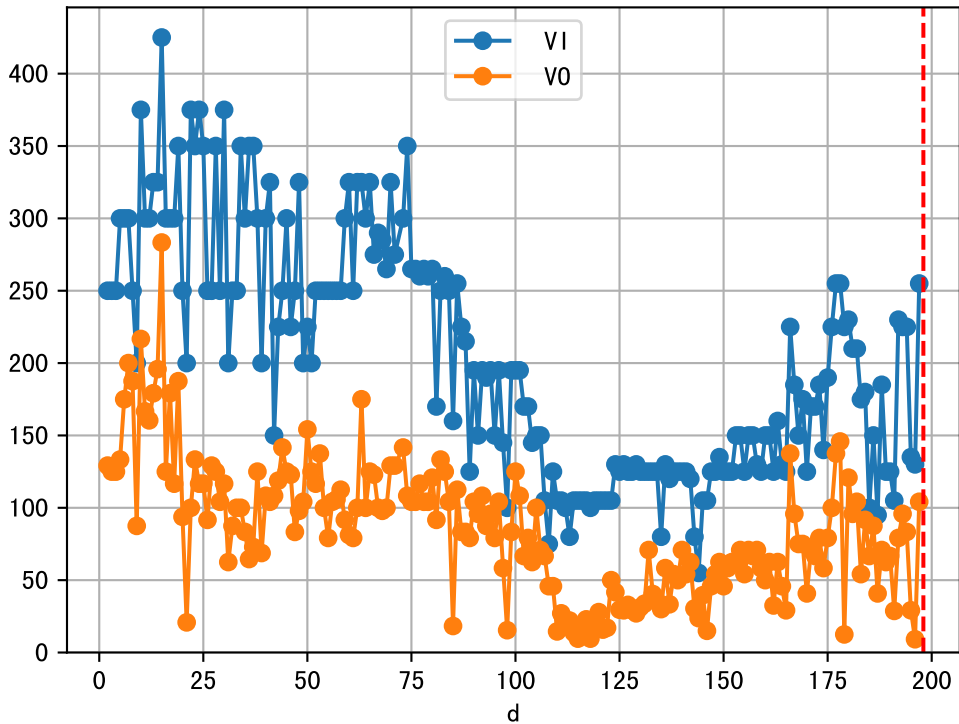
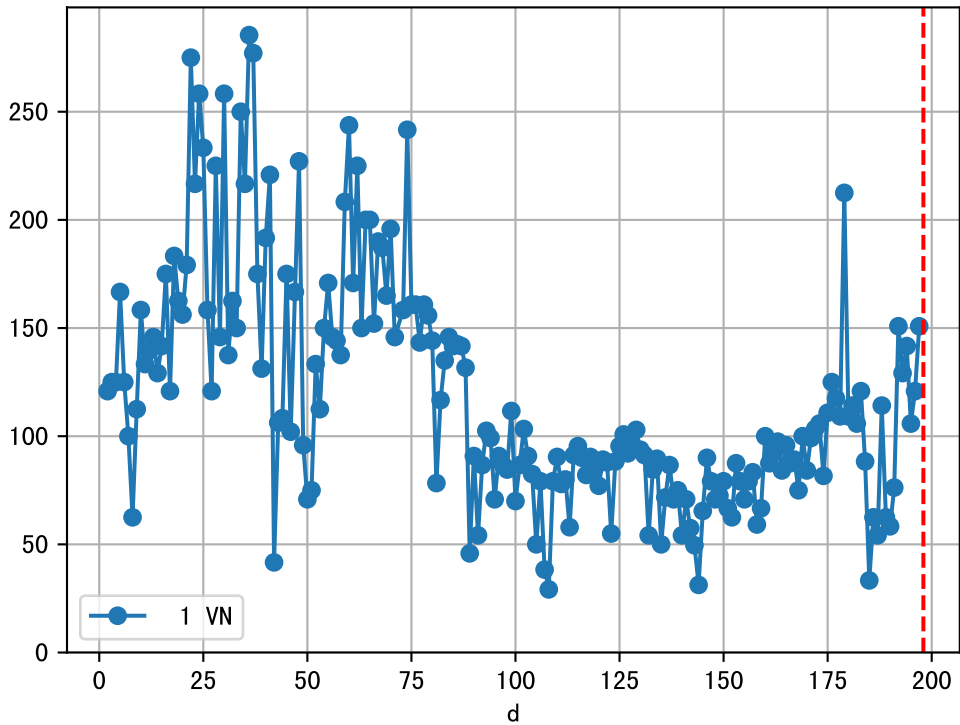
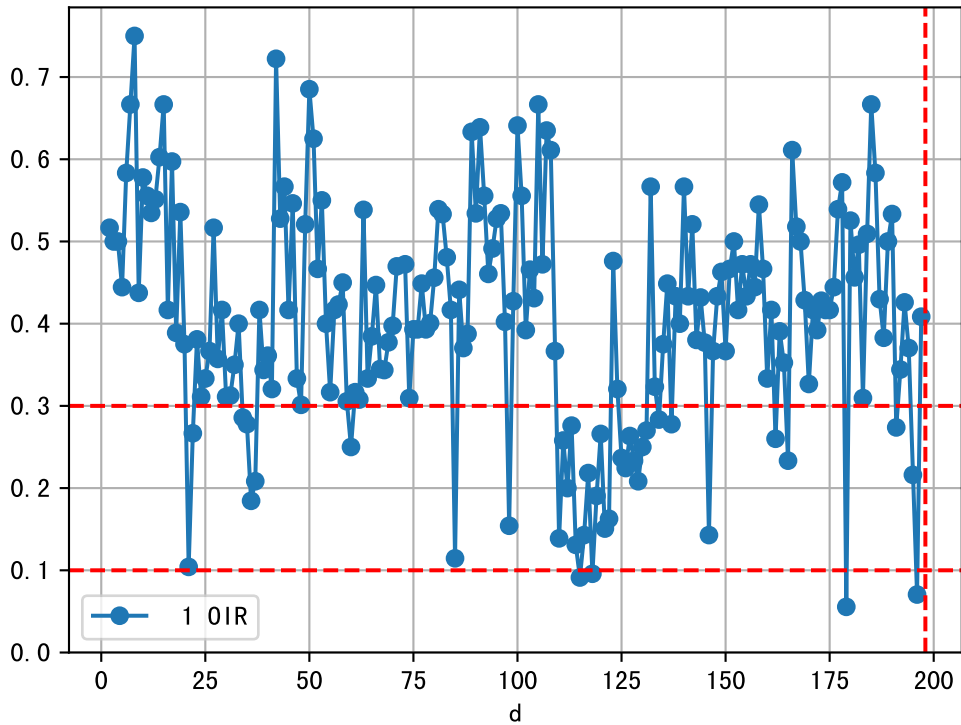


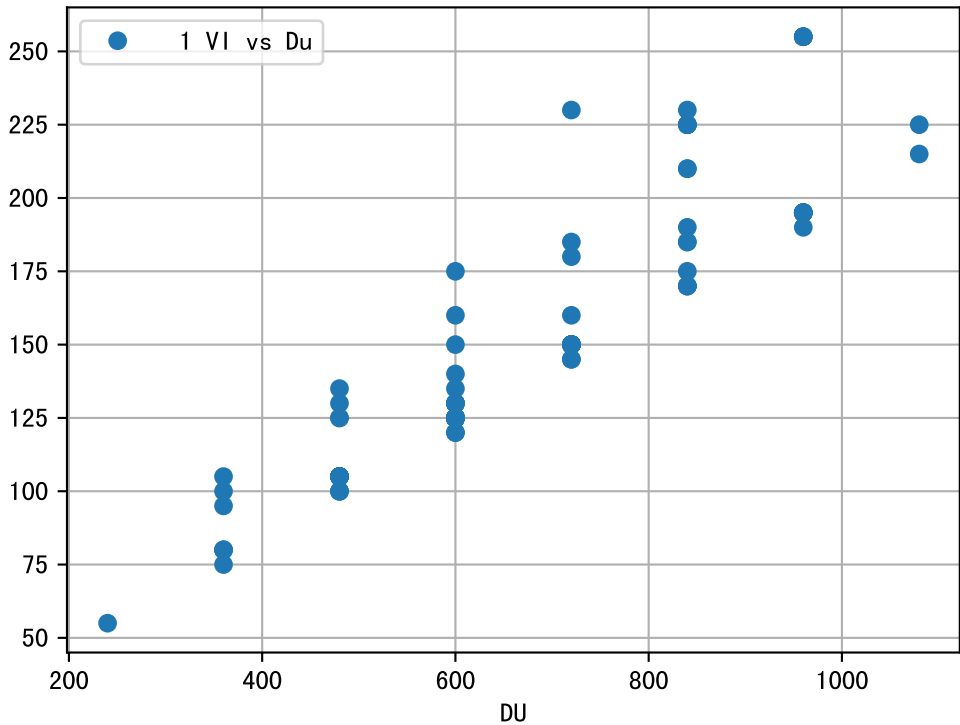
FgArea: [' 0']
NC11 P2-3
2026-03-13 (Day 198)

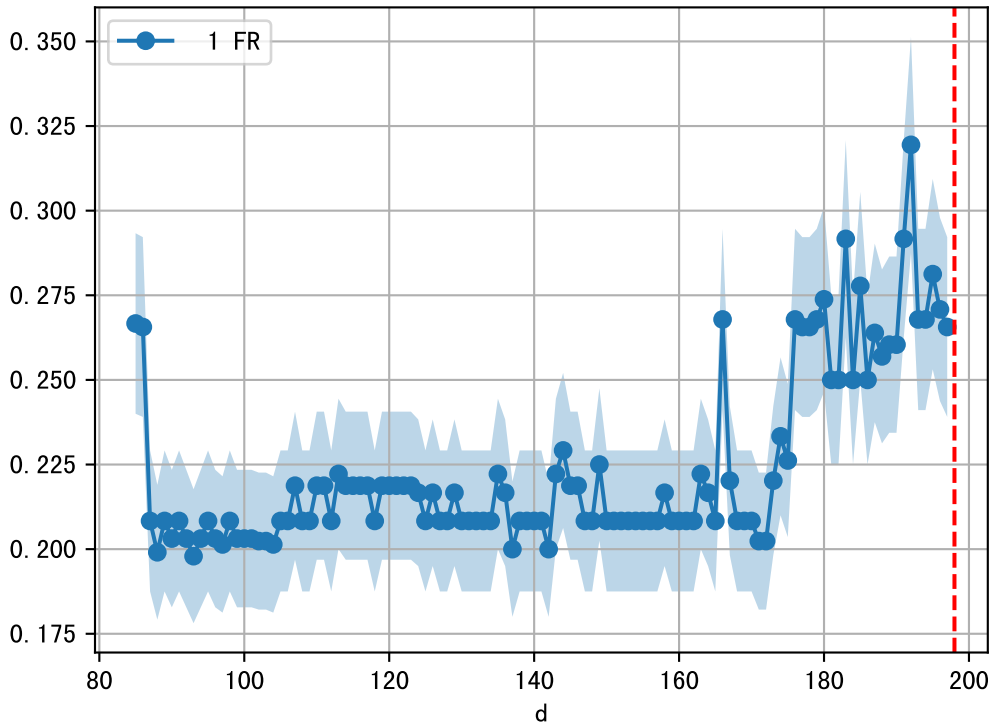
fgNum 1 (at_row = 4.0)

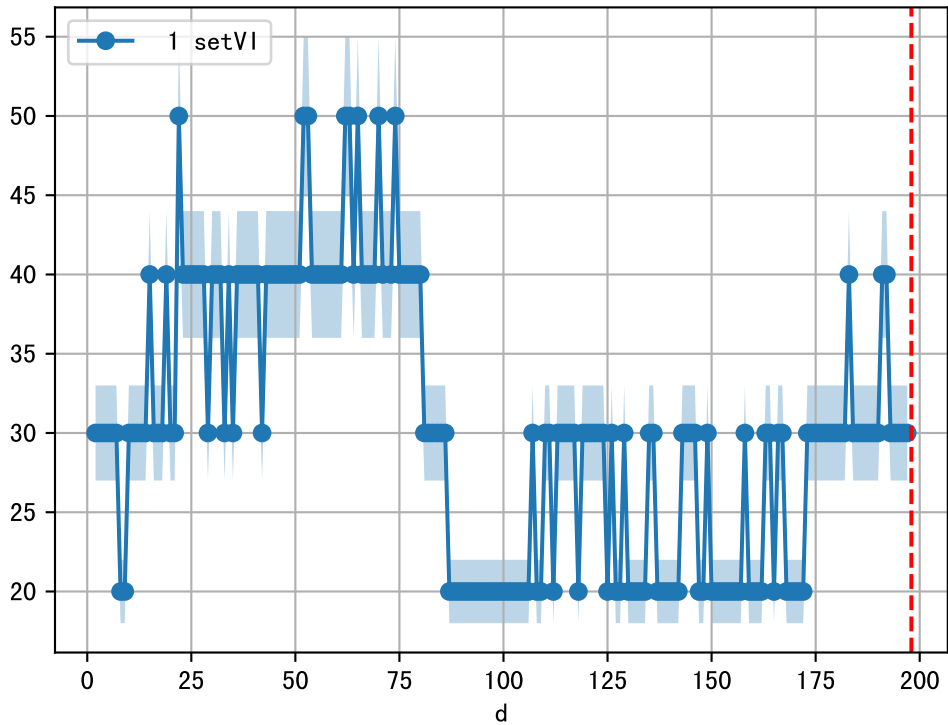




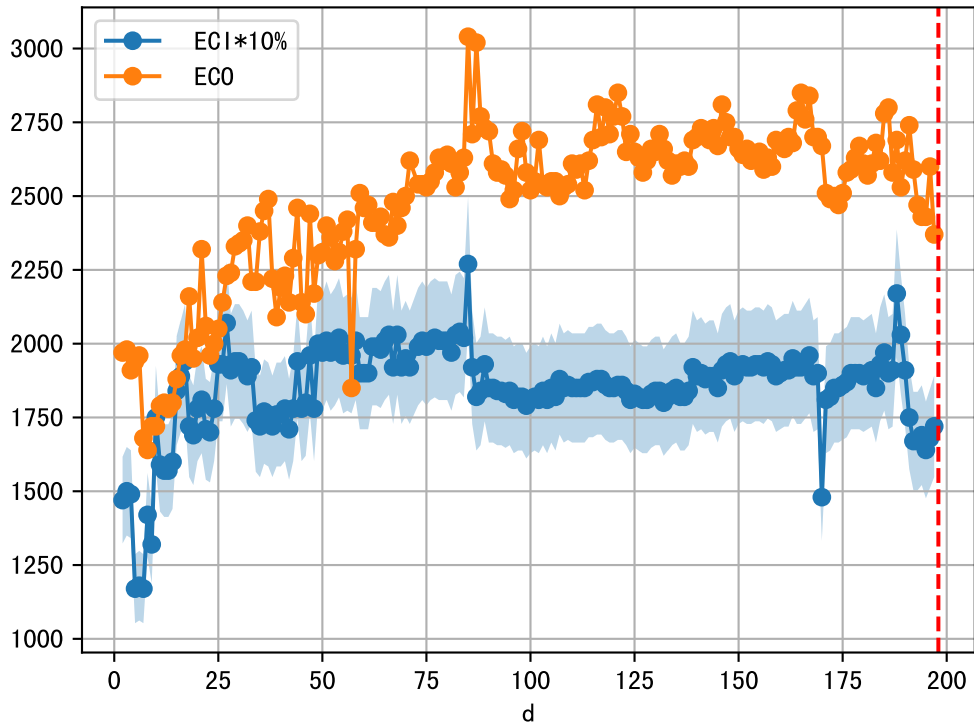


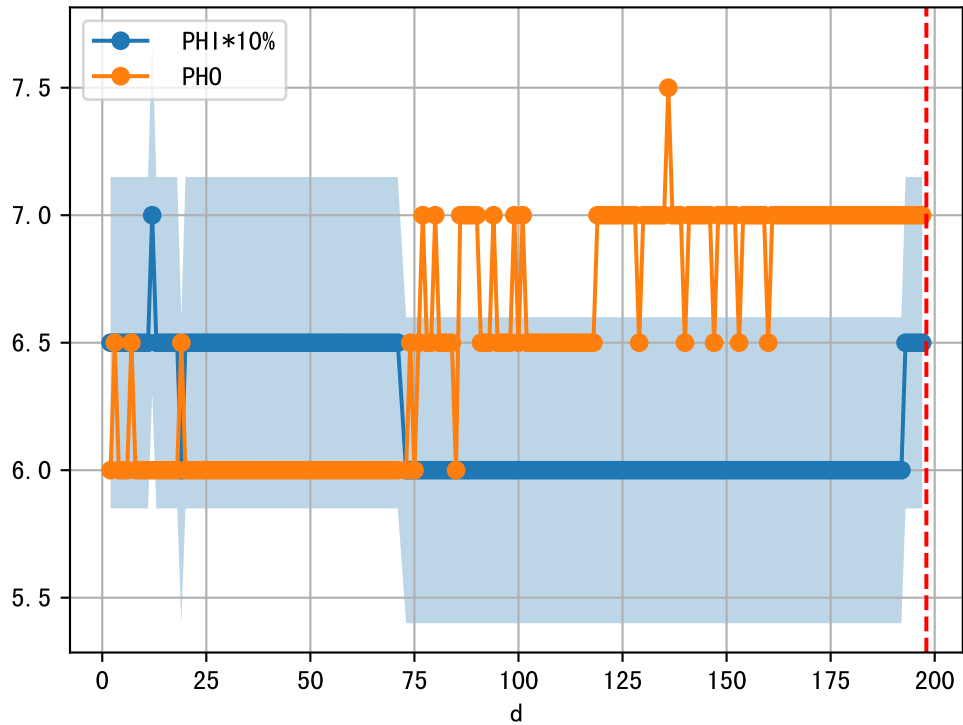




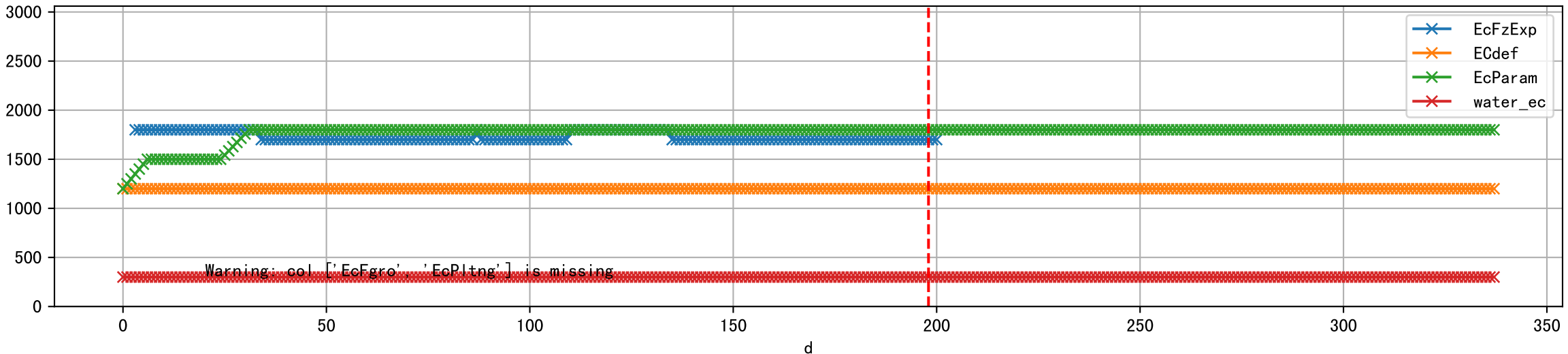


1 (fgArea = NA)

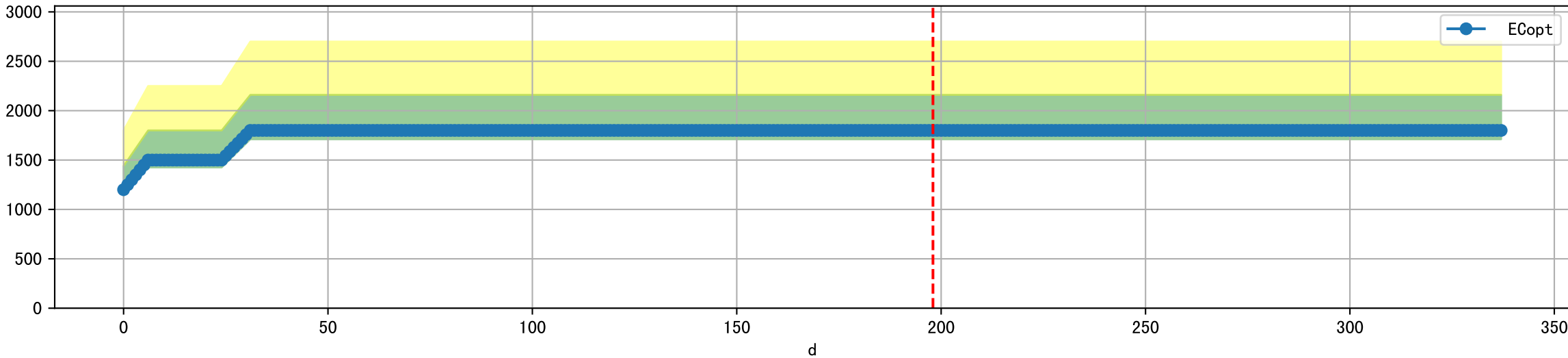




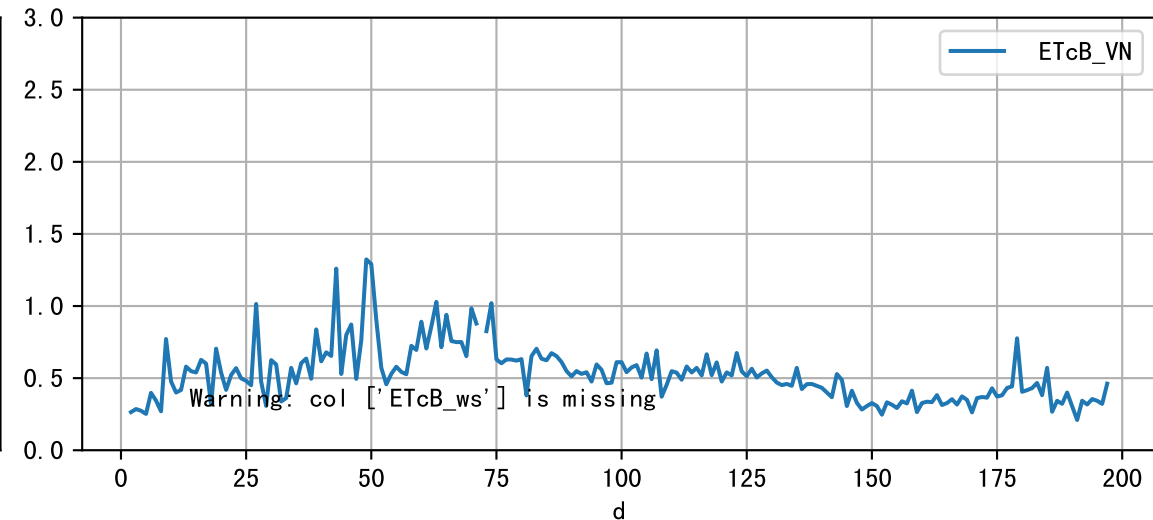
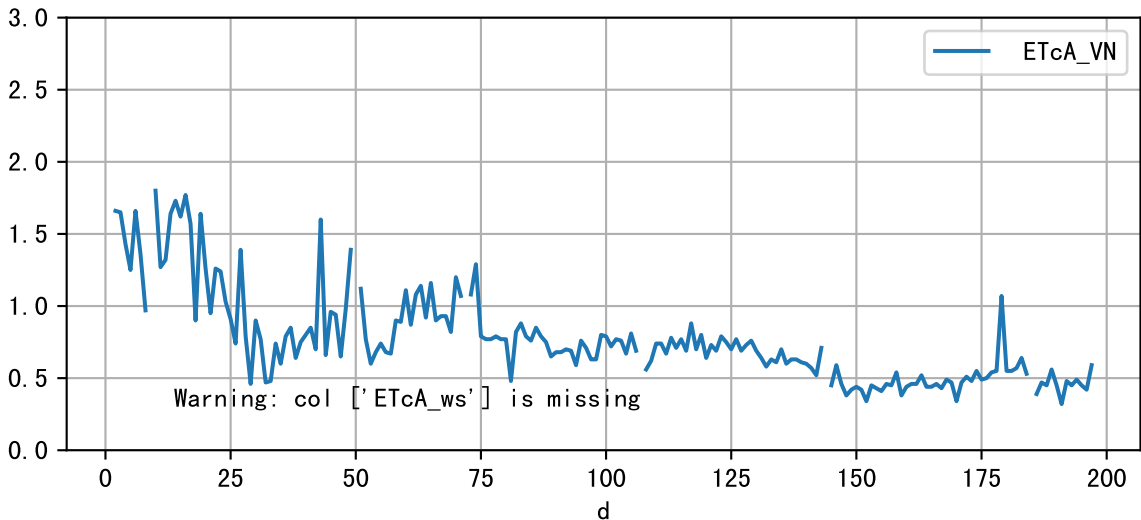
Plot [['EcFgro', 'EcFzExp', 'EcPltng', 'ECdef', 'EcParam', 'water_ec']]



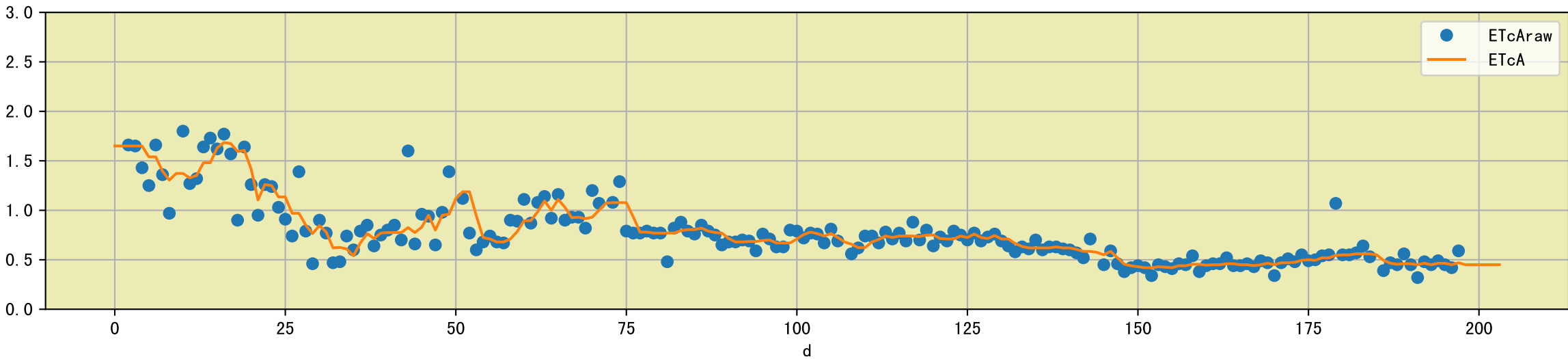
Plot [' ECopt']



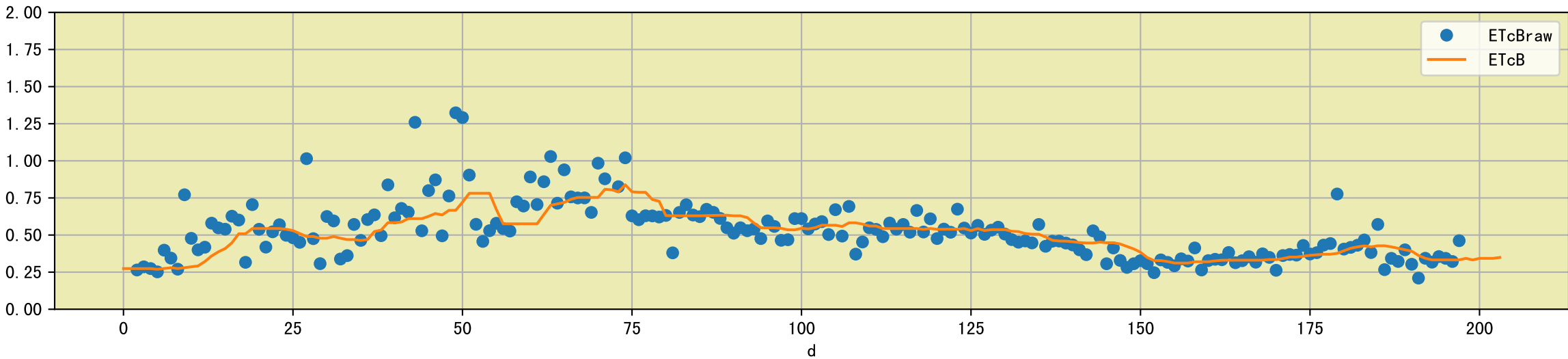
Plot [['ETcA_VN', 'ETcA_ws'], ['ETcB_VN', 'ETcB_ws']]

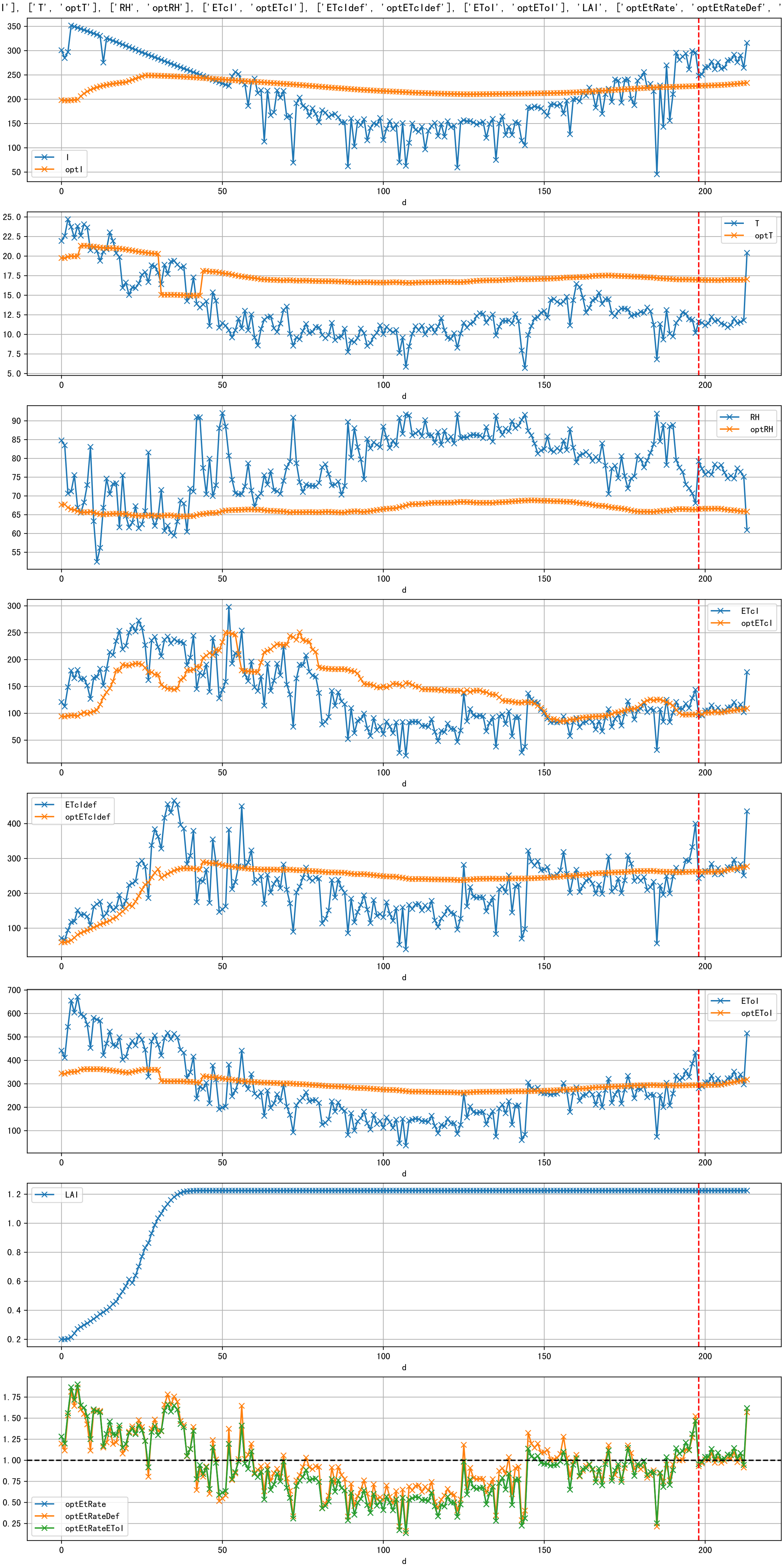


Plot [['ETcAraw:o', 'ETcA']]

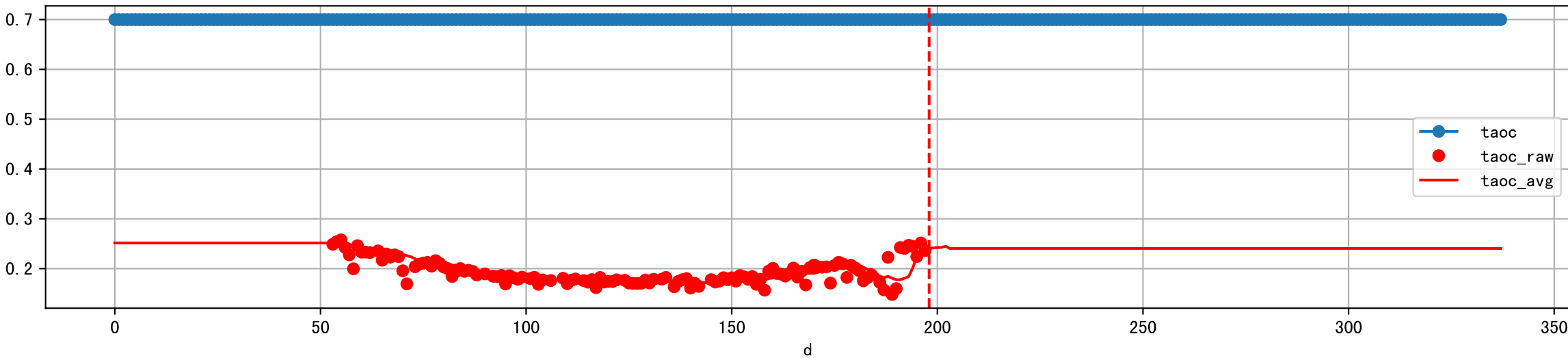


Plot [['ETcBraw:o', 'ETcB']]

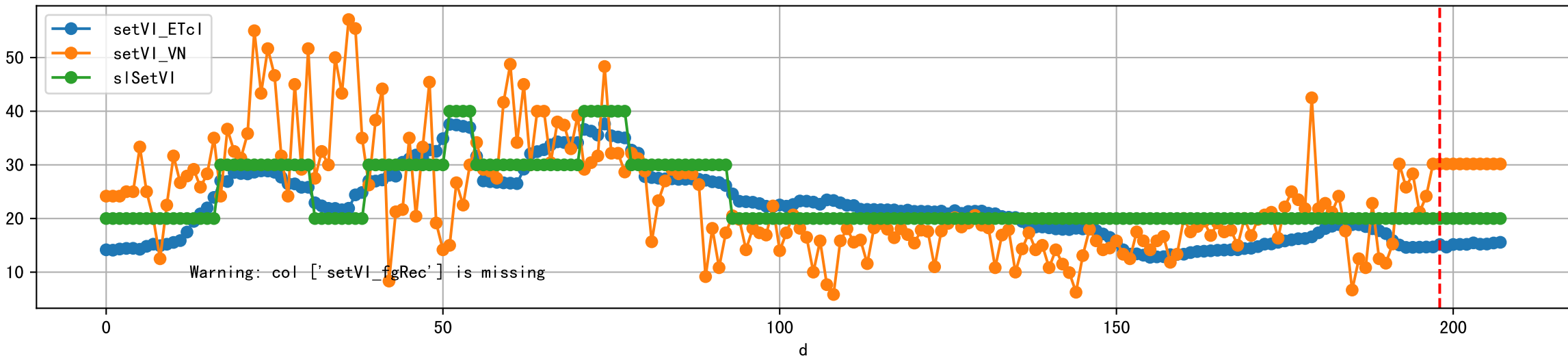




Plot [['taoc', 'taoc_raw:ro', 'taoc_avg:r-']]

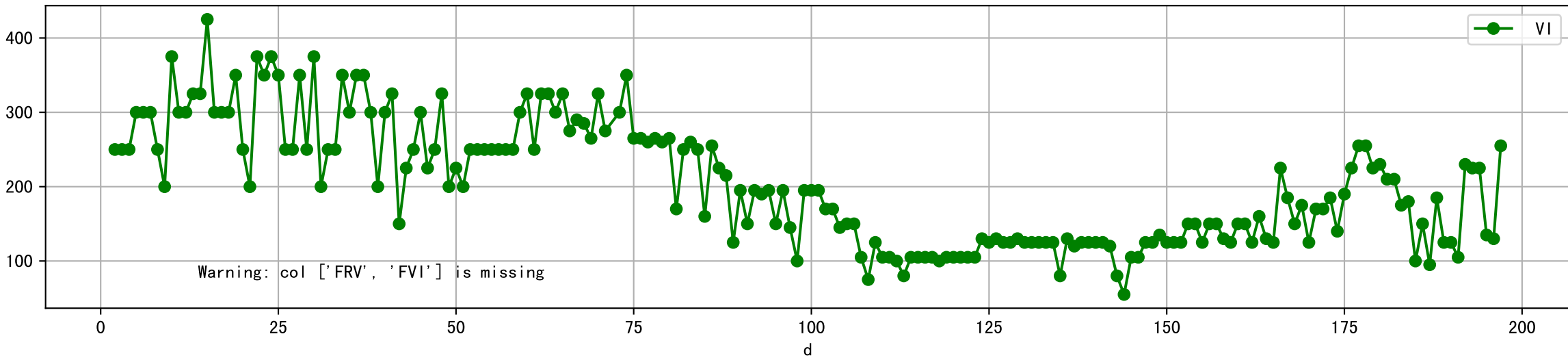


Plot [['setVI_ETcI', 'setVI_fgRec', 'setVI_VN', 'sISetVI']]

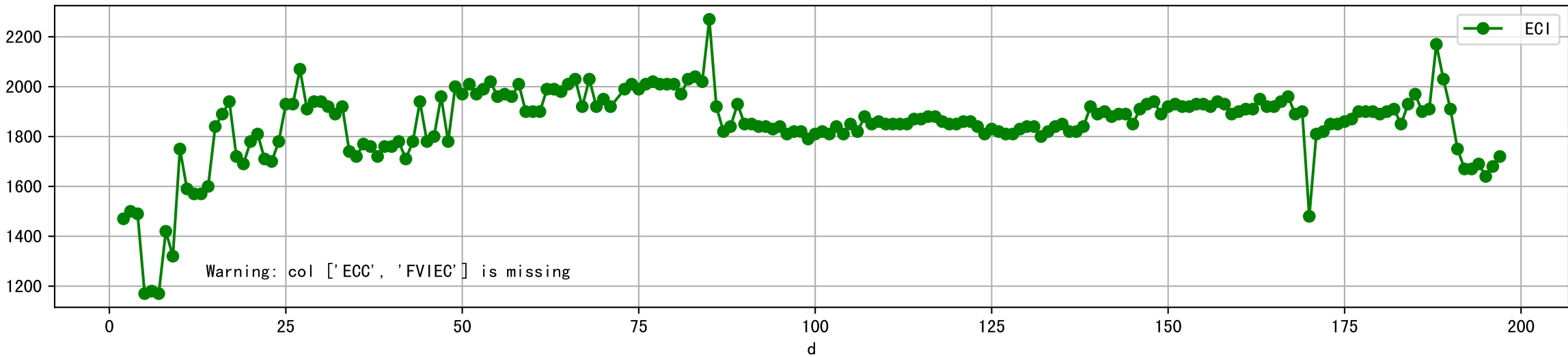




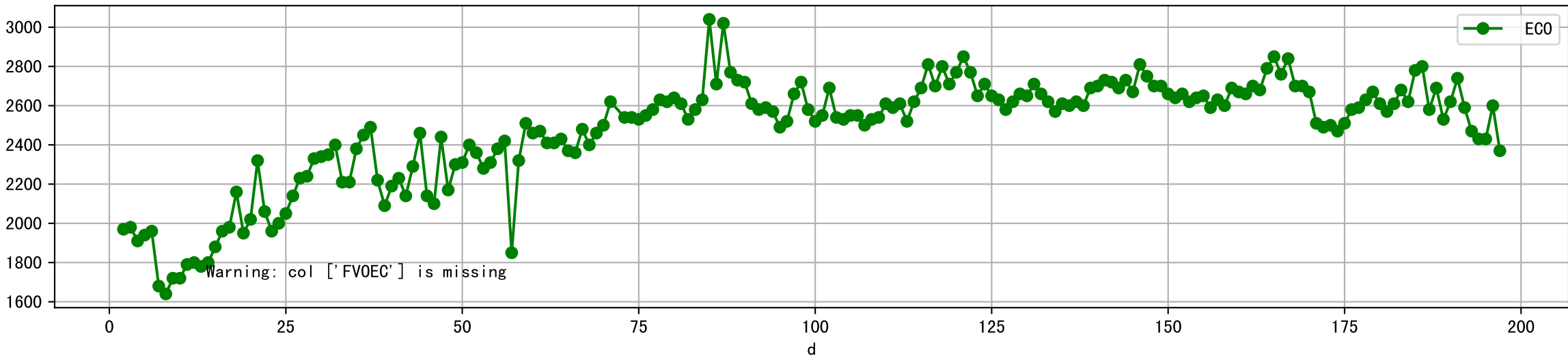
Plot [['FRV:b-o', 'FVI:r-o', 'VI:g-o']]



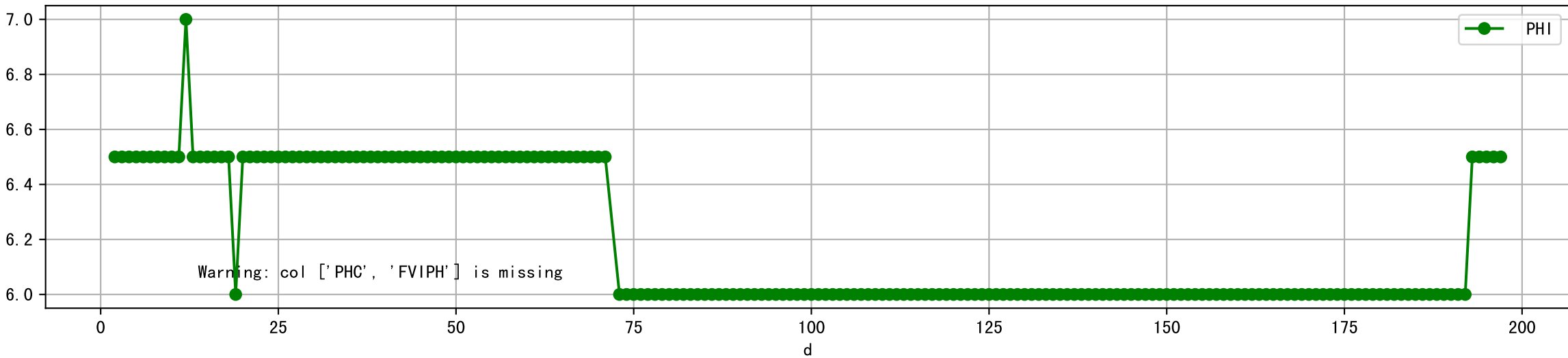
Plot [['ECC:b-o', 'FVIEC:r-o', 'ECI:g-o']]



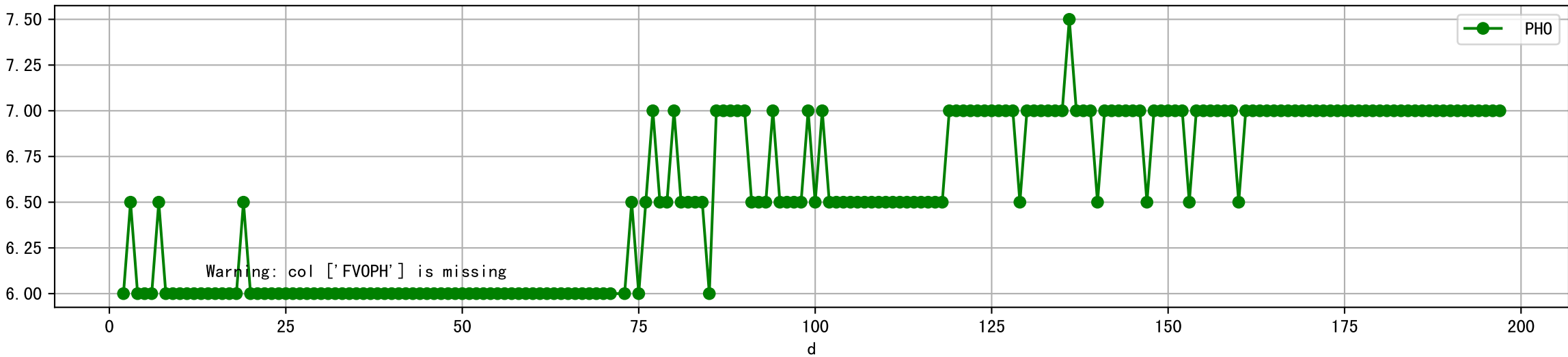
Plot [[' FV0EC:r-o', ' ECO:g-o']]



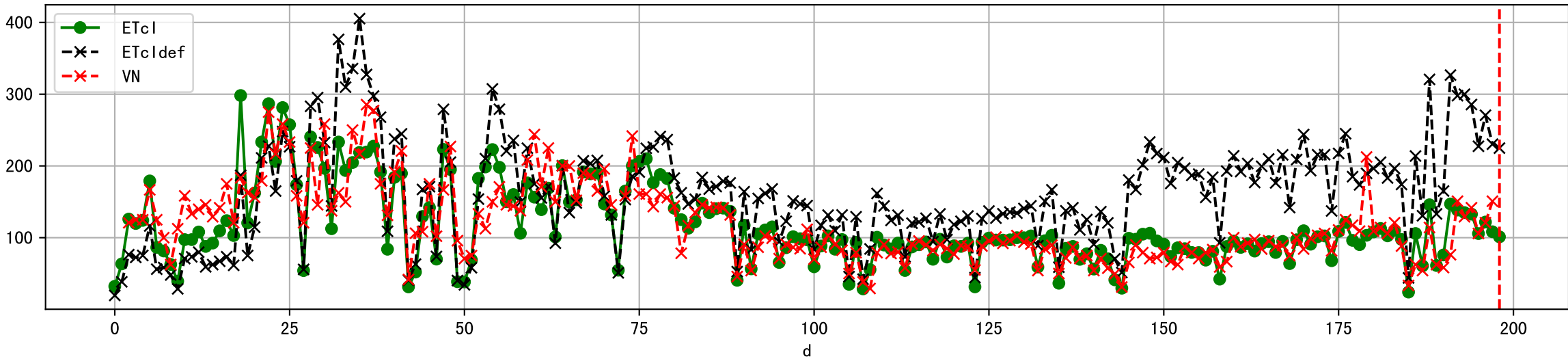
Plot [['PHC:b-o', 'FVIPH:r-o', 'PHI:g-o']]



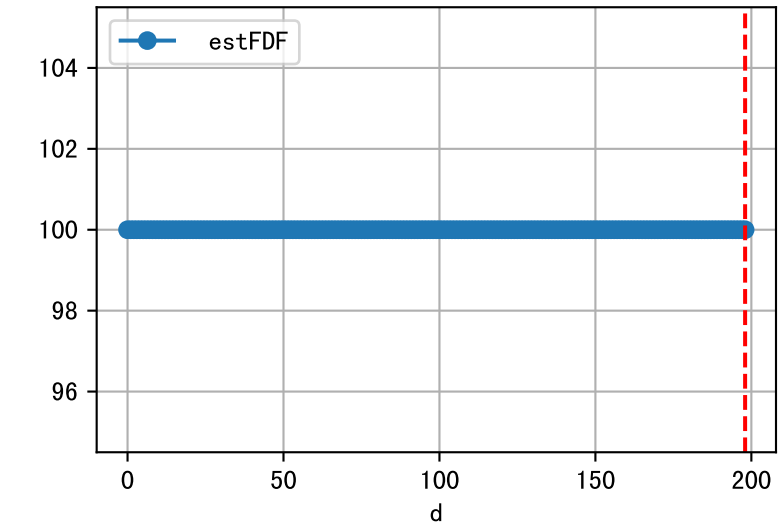
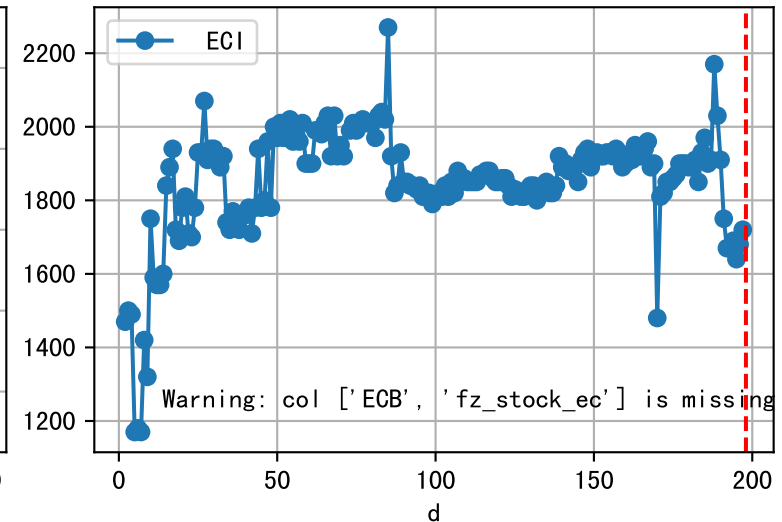
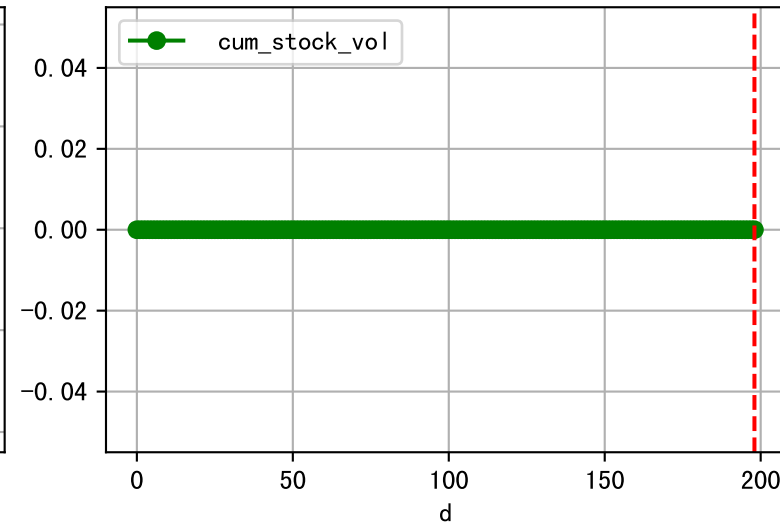
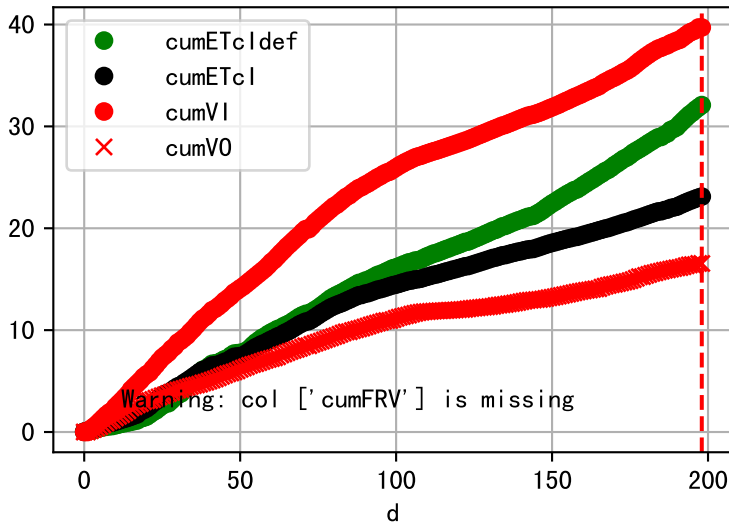
Plot [[' FVOPH:r-o' , ' PH0:g-o']]



Plot ET/VN



Plot Fv and fertilizer usage

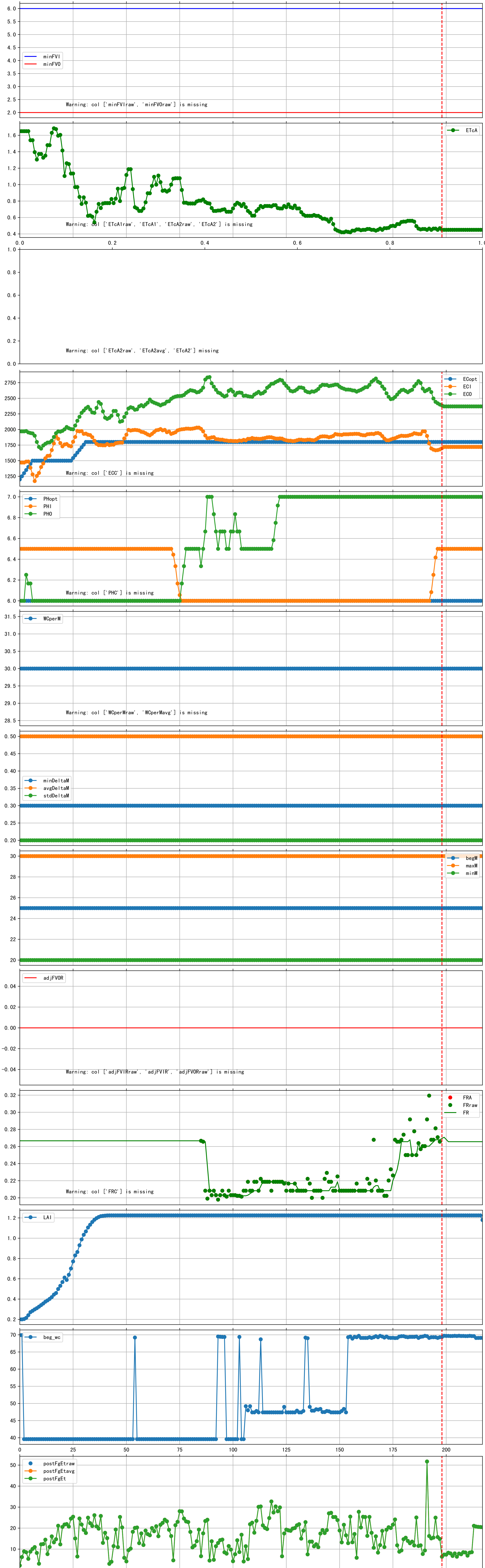


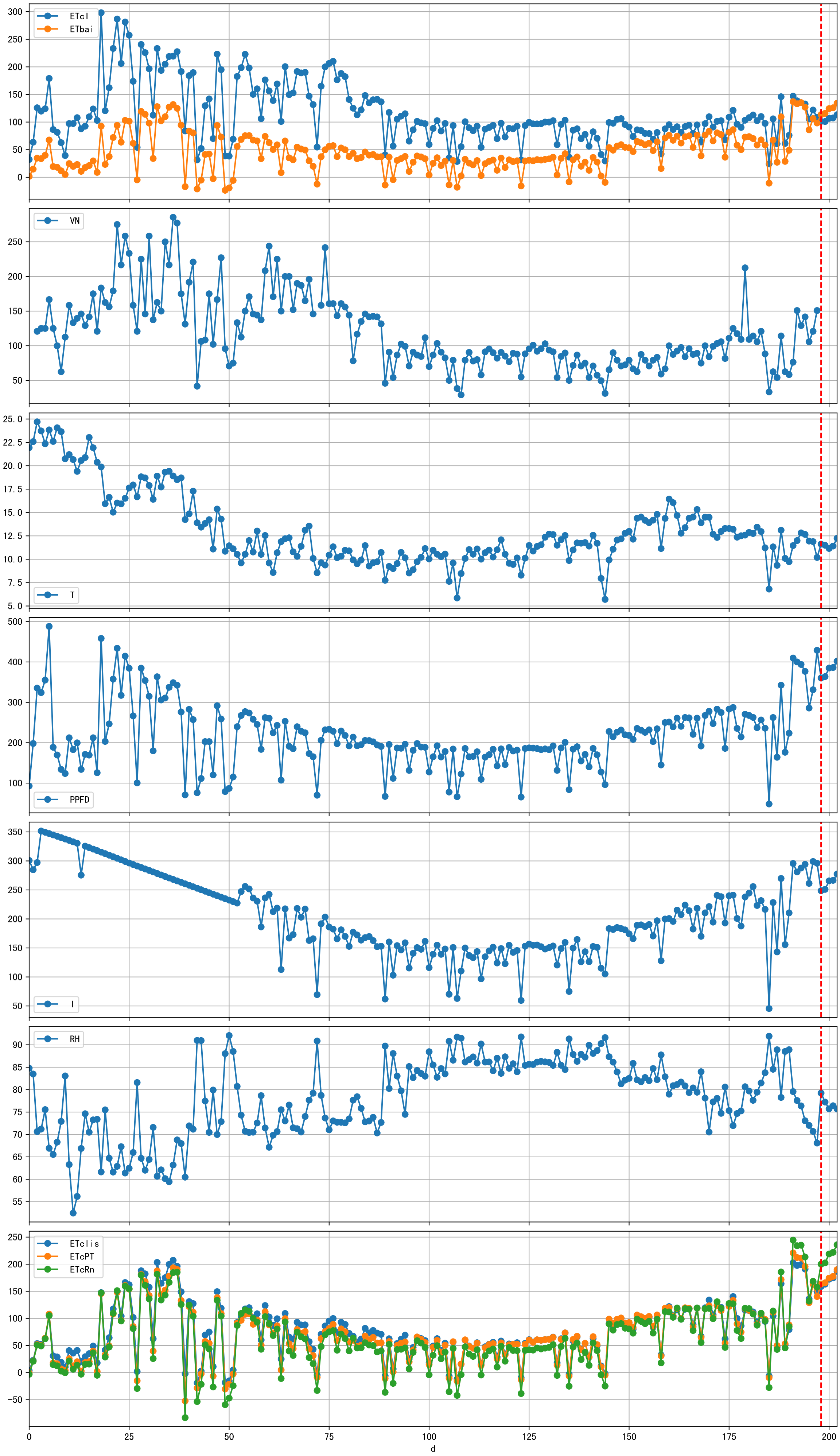


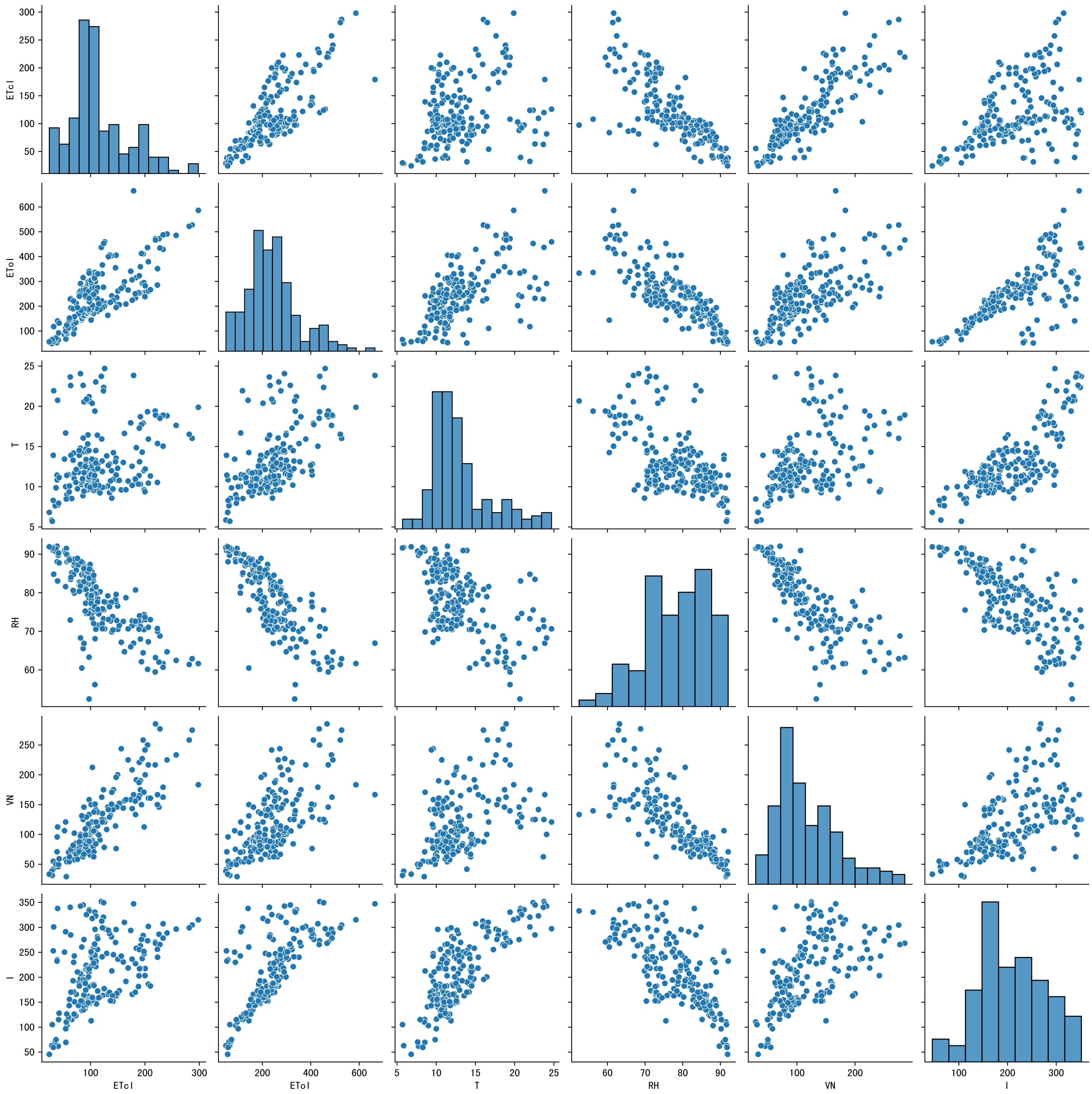
Fertilizer Range Source: kerleyL, kerleyH, UnivFL, TNAI, Haifa

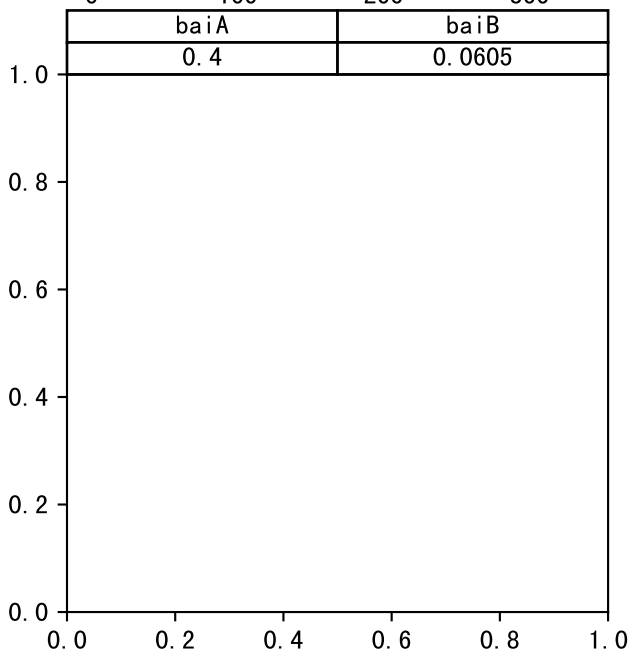
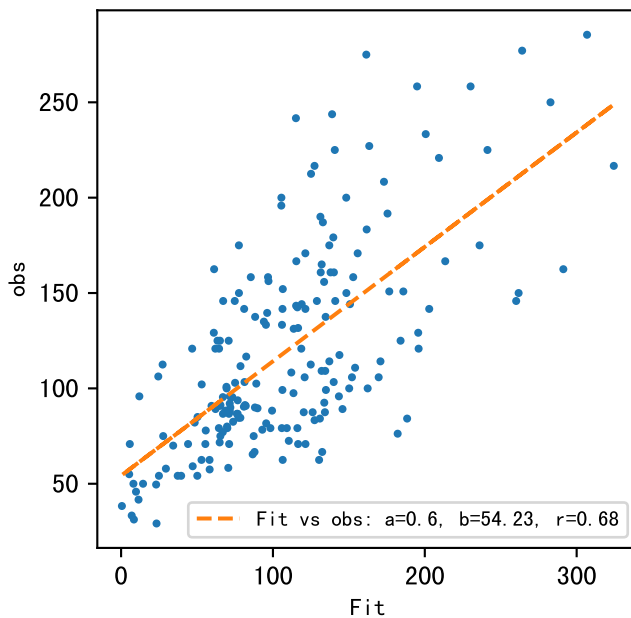
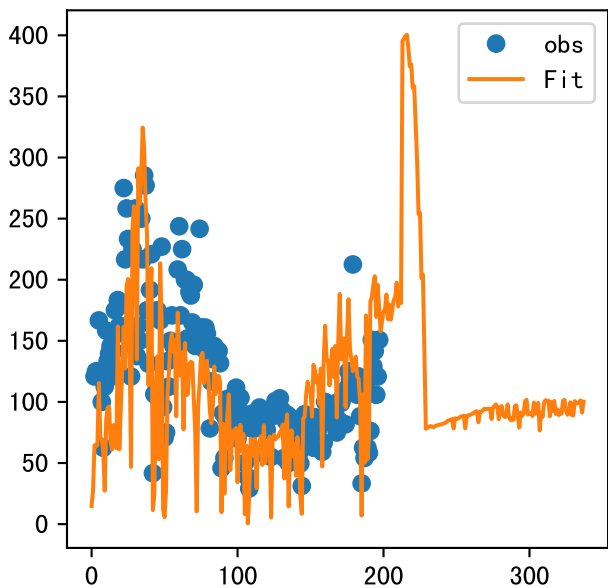


Trend plot forP2-3_0

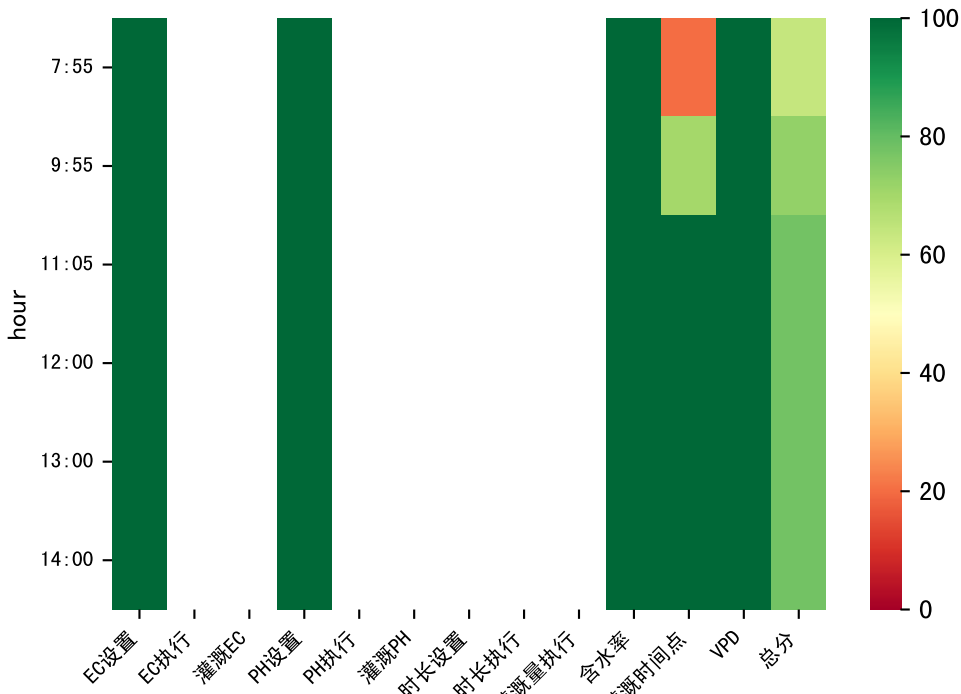




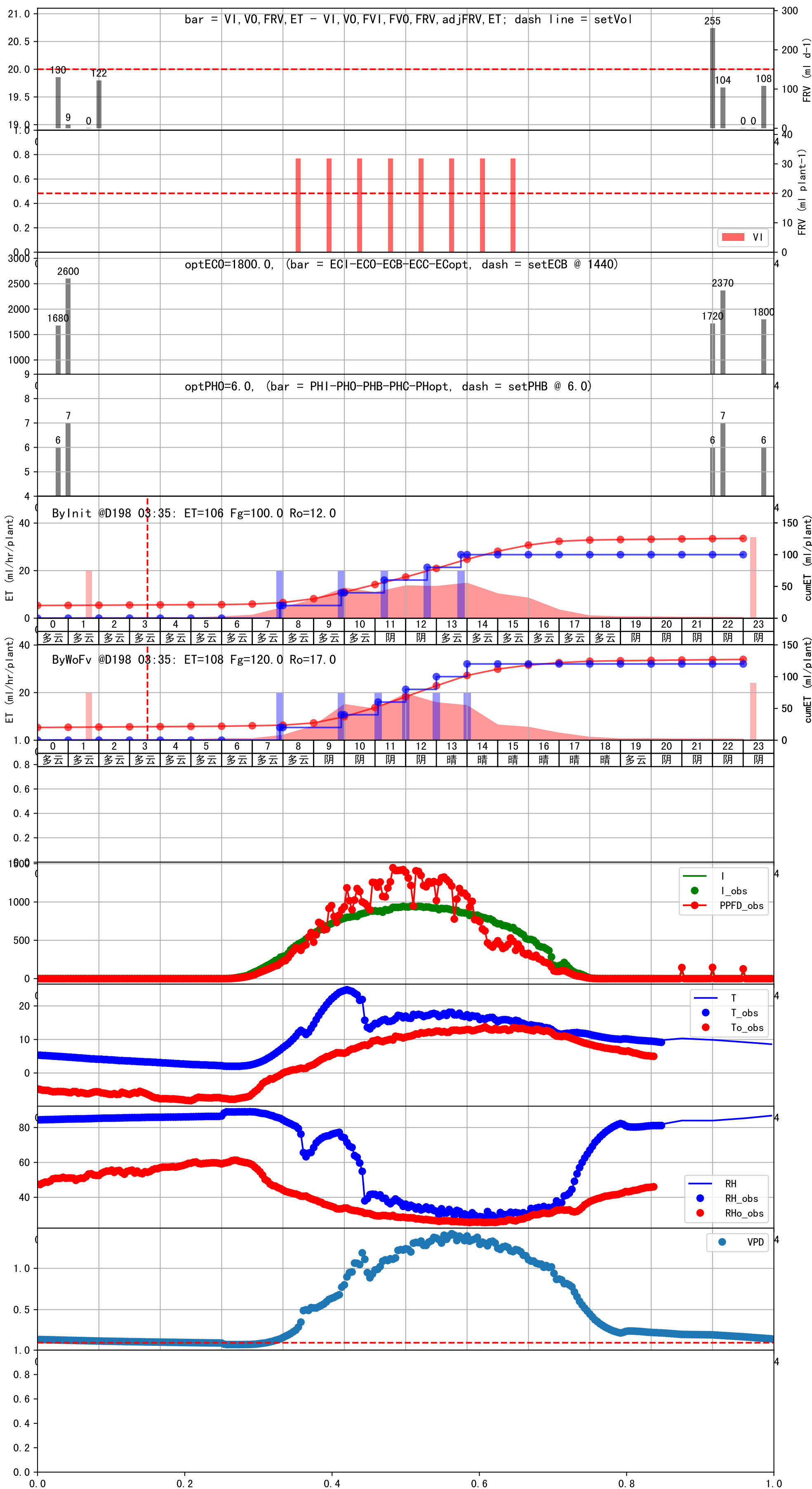


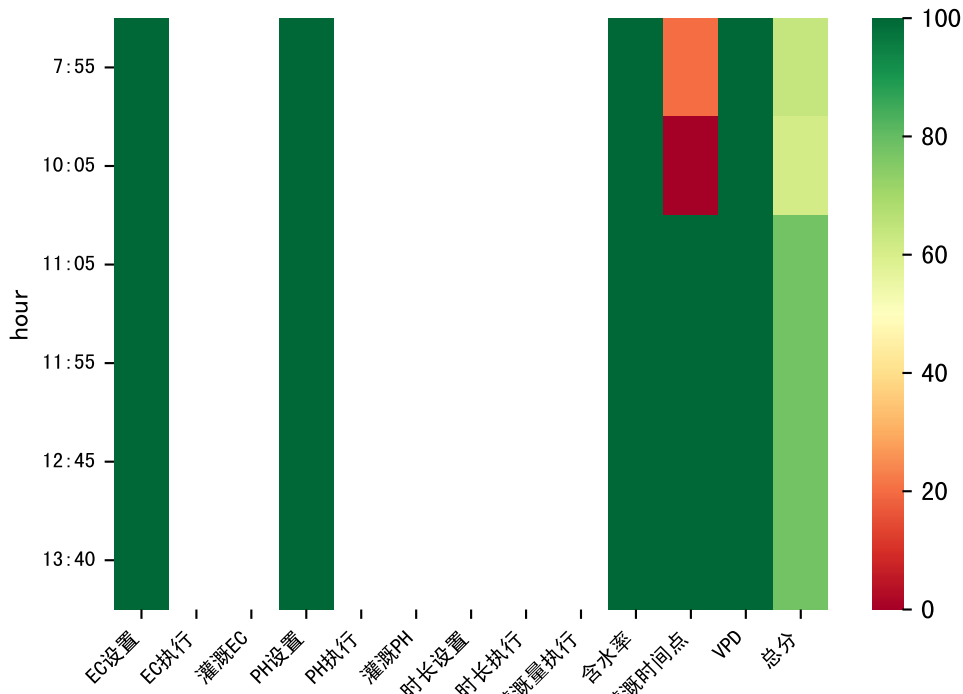


时间	灌溉时长(秒)	灌溉量(毫升/株)	灌溉总量(方/次)	天气	注释
07:50	74	20.0	0.01	多云	预期@07:50 手动 (未用传感器)
10:20	74	20.0	0.01	多云	预期@10:20 手动 (未用传感器)
11:30	74	20.0	0.01	多云	预期@11:30 手动 (未用传感器)
12:30	74	20.0	0.01	多云	预期@12:30 手动 (未用传感器)
13:40	74	20.0	0.01	多云	预期@13:40 手动 (未用传感器)
总计	370.0 (5次)	100.0			建议进液EC: 1620, PH: 6.0

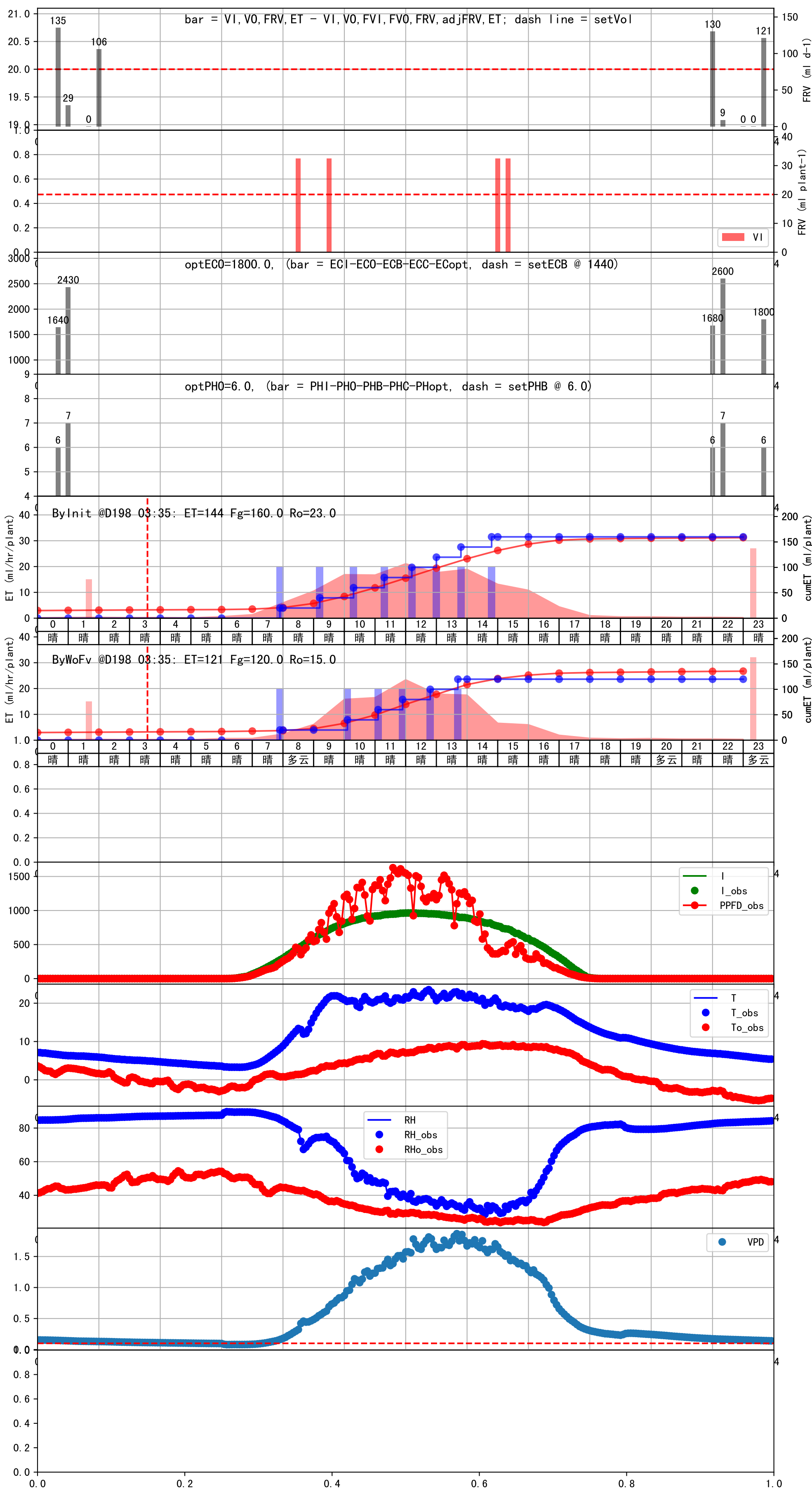


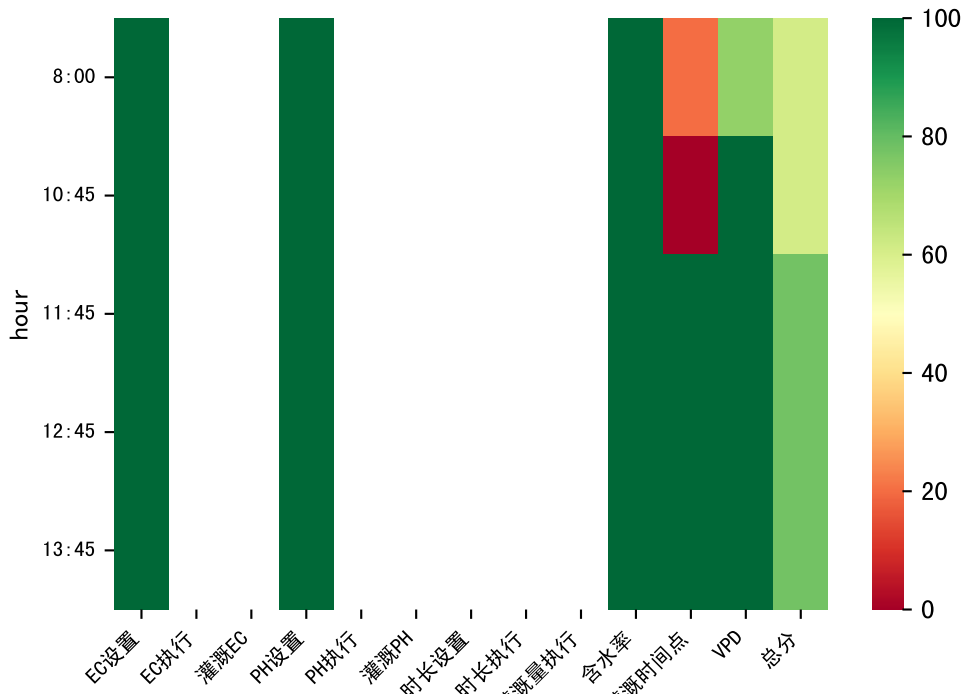
时间	灌溉时长(秒)	灌溉量(毫升/株)	灌溉总量(方/次)	天气	注释
07:55	74	20.0	0.01	多云	假设@07:55 未知程序 (未用传感器)
09:55	74	20.0	0.01	阴	假设@09:55 未知程序 (未用传感器)
11:05	74	20.0	0.01	阴	假设@11:05 未知程序 (未用传感器)
12:00	74	20.0	0.01	阴	假设@12:00 未知程序 (未用传感器)
13:00	74	20.0	0.01	晴	假设@13:00 未知程序 (未用传感器)
14:00	74	20.0	0.01	晴	假设@14:00 未知程序 (未用传感器)
总计	444.0 (6次)	120.0			建议进液EC: 1440, PH: 6.0



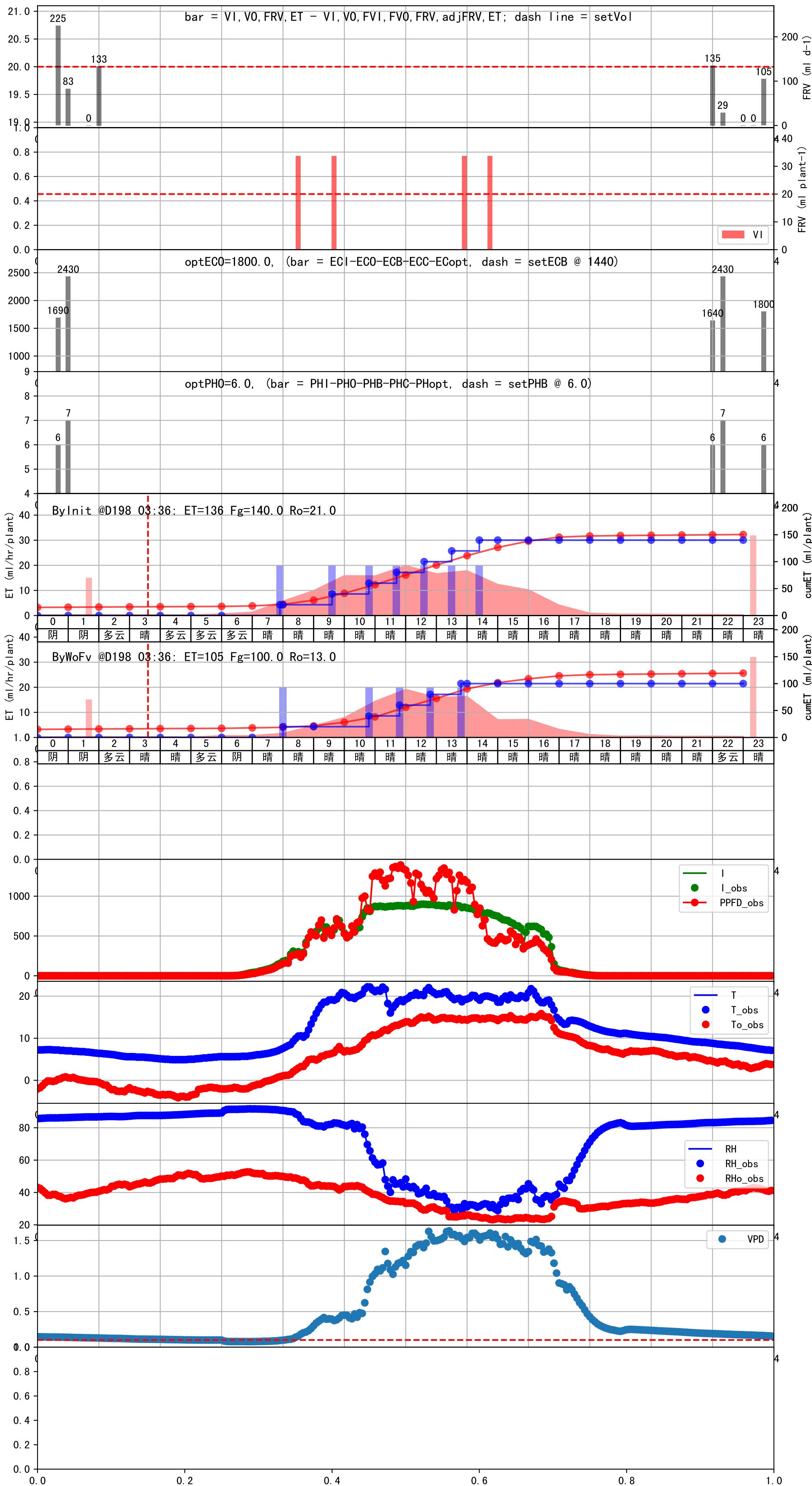


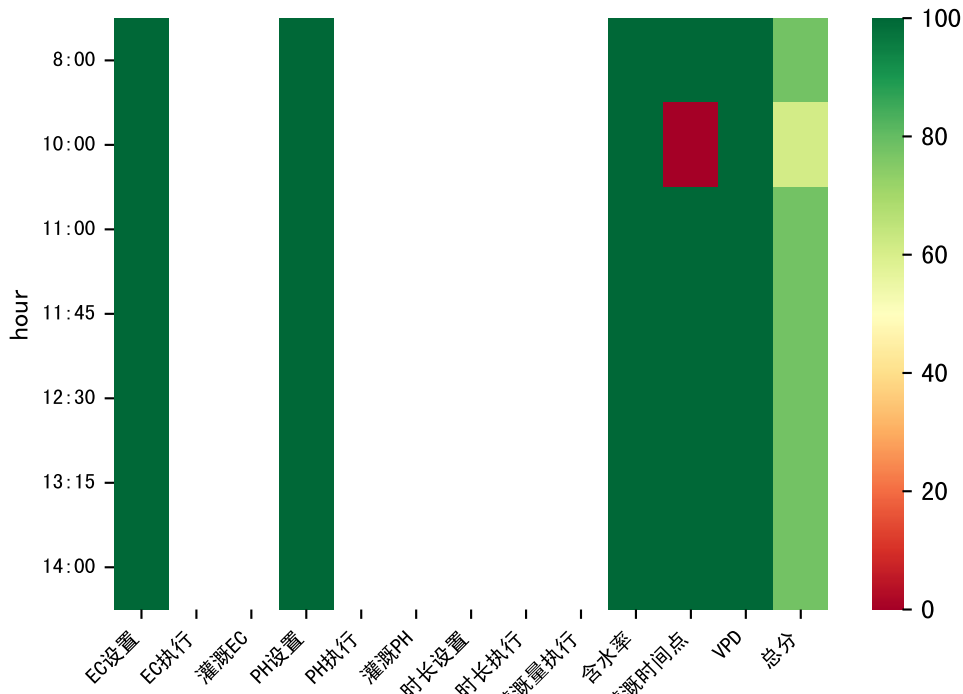
时间	灌溉时长(秒)	灌溉量(毫升/株)	灌溉总量(方/次)	天气	注释
07:55	74	20.0	0.01	晴	假设@07:55 未知程序 (未用传感器)
10:05	74	20.0	0.01	晴	假设@10:05 未知程序 (未用传感器)
11:05	74	20.0	0.01	晴	假设@11:05 未知程序 (未用传感器)
11:55	74	20.0	0.01	晴	假设@11:55 未知程序 (未用传感器)
12:45	74	20.0	0.01	晴	假设@12:45 未知程序 (未用传感器)
13:40	74	20.0	0.01	晴	假设@13:40 未知程序 (未用传感器)
总计	444.0 (6次)	120.0			建议进液EC: 1440, PH: 6.0





时间	灌溉时长(秒)	灌溉量(毫升/株)	灌溉总量(方/次)	天气	注释
08:00	74	20.0	0.01	晴	假设@08:00 未知程序 (未用传感器)
10:45	74	20.0	0.01	晴	假设@10:45 未知程序 (未用传感器)
11:45	74	20.0	0.01	晴	假设@11:45 未知程序 (未用传感器)
12:45	74	20.0	0.01	晴	假设@12:45 未知程序 (未用传感器)
13:45	74	20.0	0.01	晴	假设@13:45 未知程序 (未用传感器)
总计	370.0 (5次)	100.0			建议进液EC: 1440, PH: 6.0





时间	灌溉时长(秒)	灌溉量(毫升/株)	灌溉总量(方/次)	天气	注释
08:00	77	20.0	0.01	晴	假设@08:00 未知程序 (未用传感器)
10:00	77	20.0	0.01	晴	假设@10:00 未知程序 (未用传感器)
11:00	77	20.0	0.01	晴	假设@11:00 未知程序 (未用传感器)
11:45	77	20.0	0.01	晴	假设@11:45 未知程序 (未用传感器)
12:30	77	20.0	0.01	晴	假设@12:30 未知程序 (未用传感器)
13:15	77	20.0	0.01	晴	假设@13:15 未知程序 (未用传感器)
14:00	77	20.0	0.01	晴	假设@14:00 未知程序 (未用传感器)
总计	539.0 (7次)	140.0			建议进液EC: 1440, PH: 6.0

