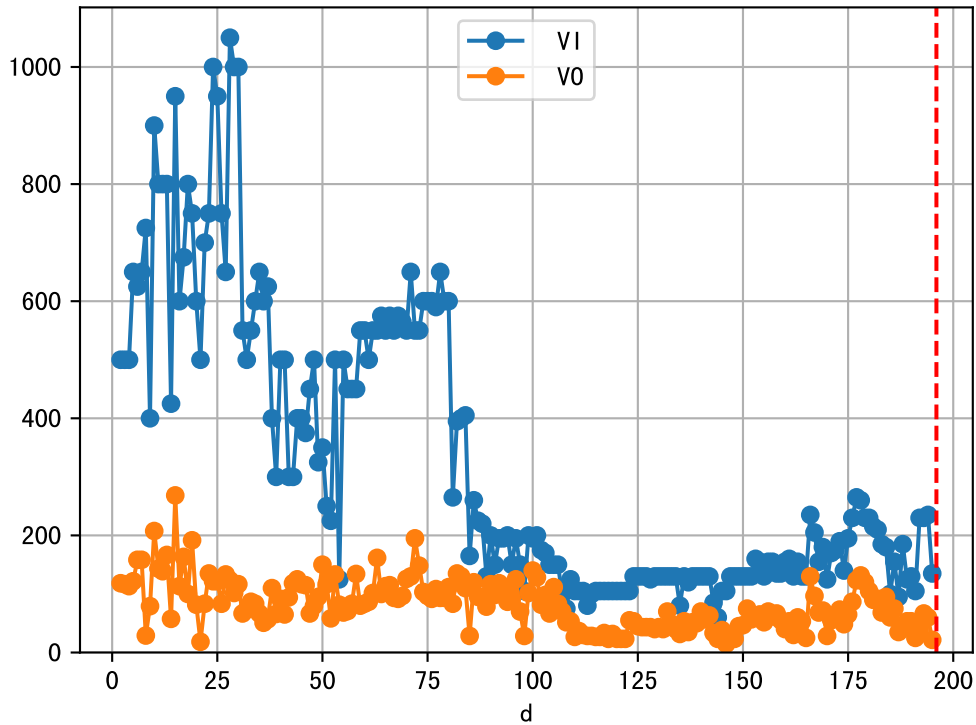
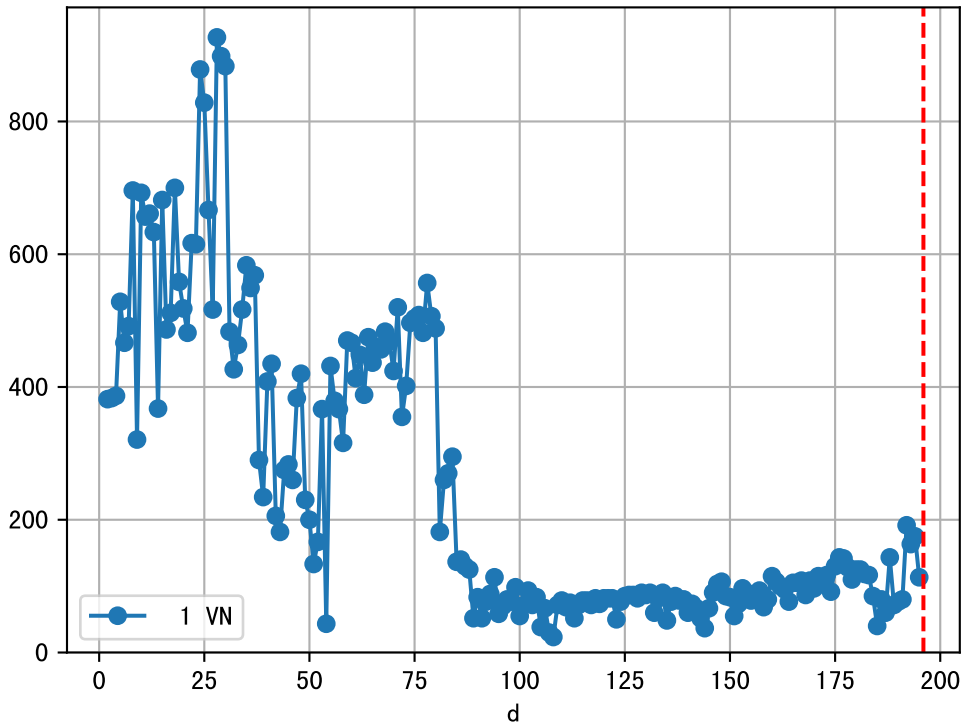
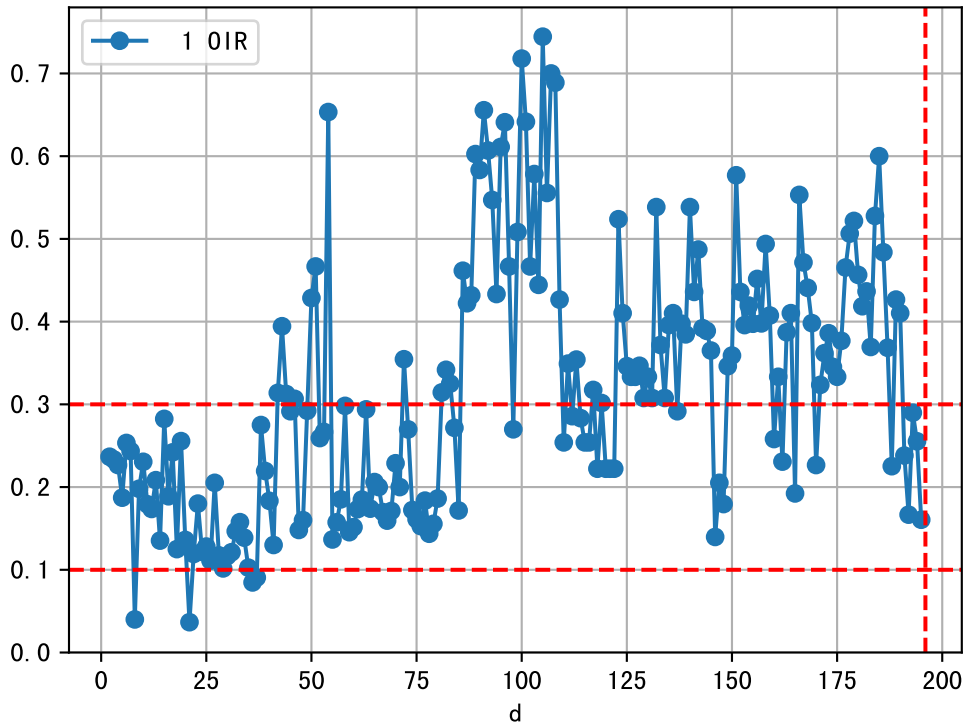


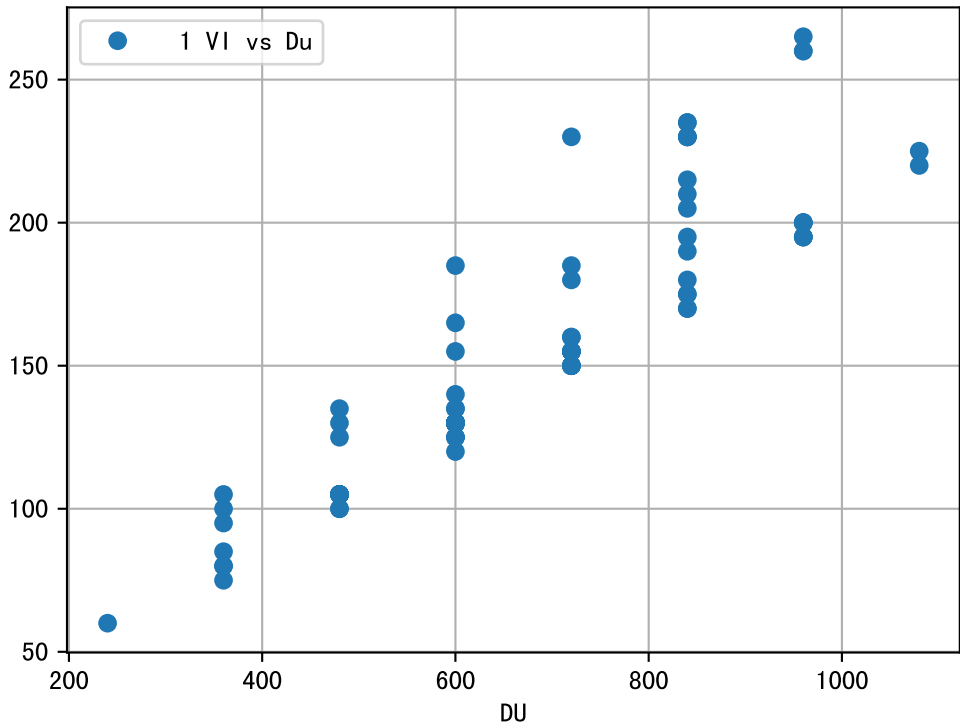
FgArea: [' 0']
NC11 P2-4
2026-03-11 (Day 196)

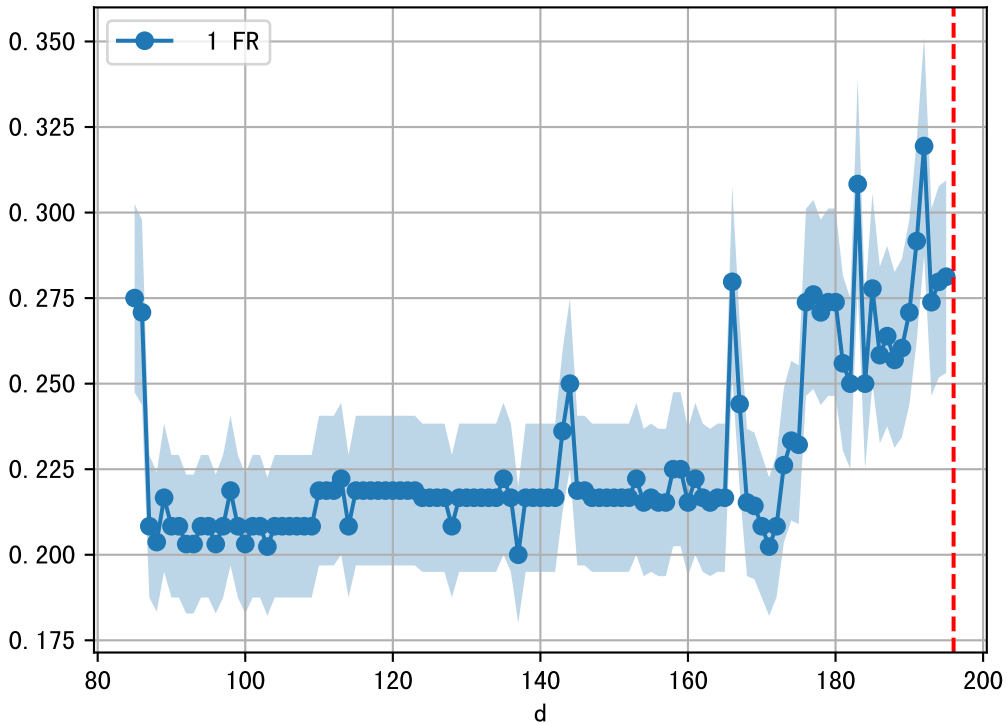
fgNum 1 (at_row = 49.0)

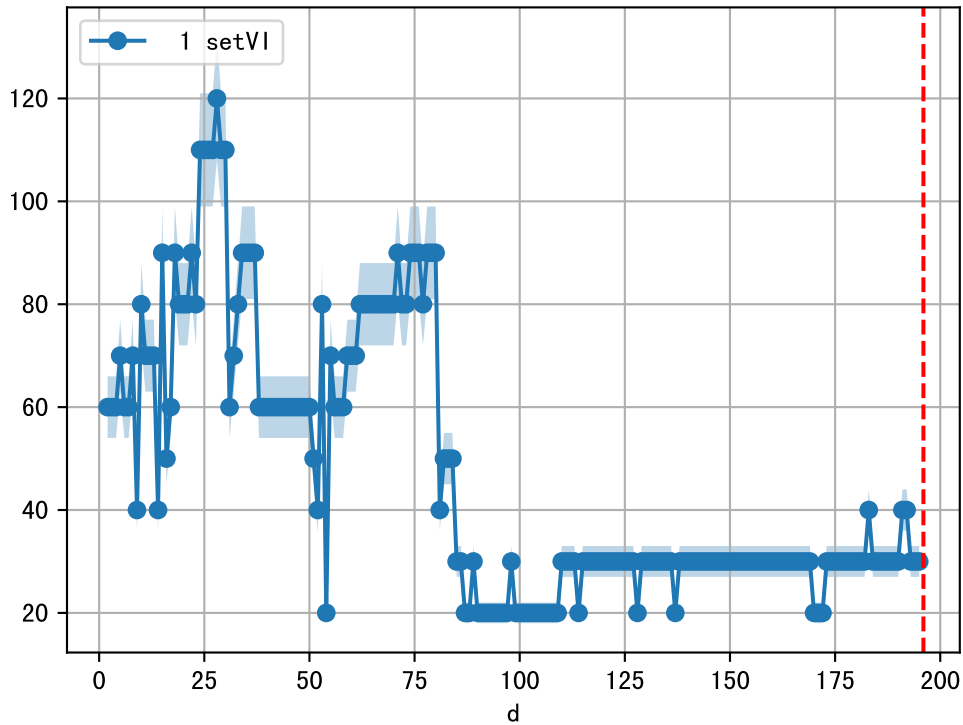




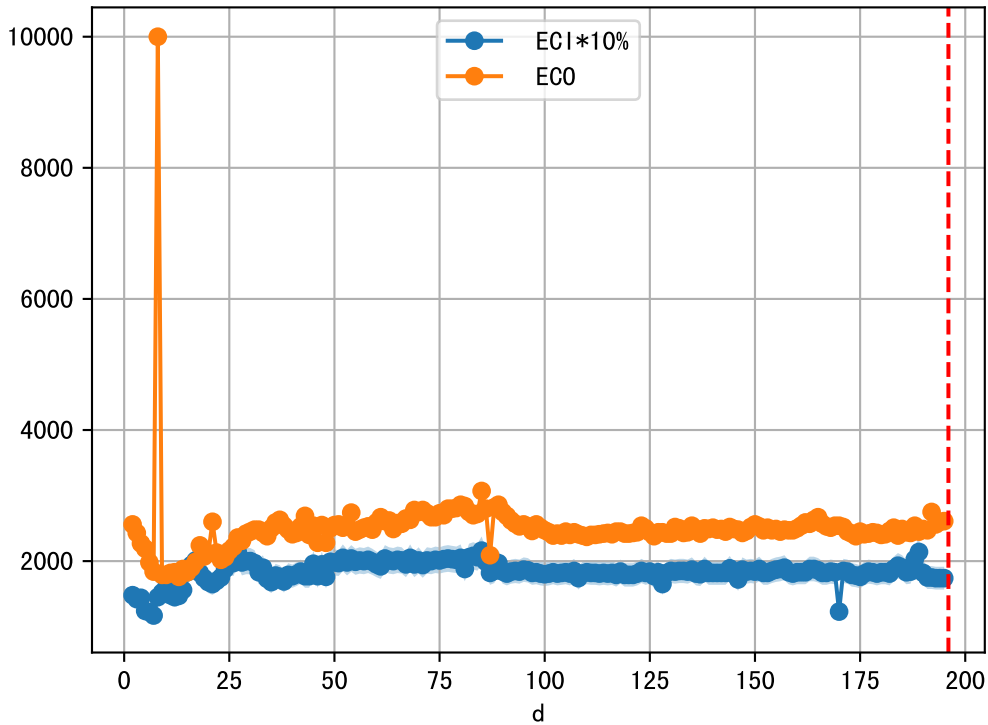


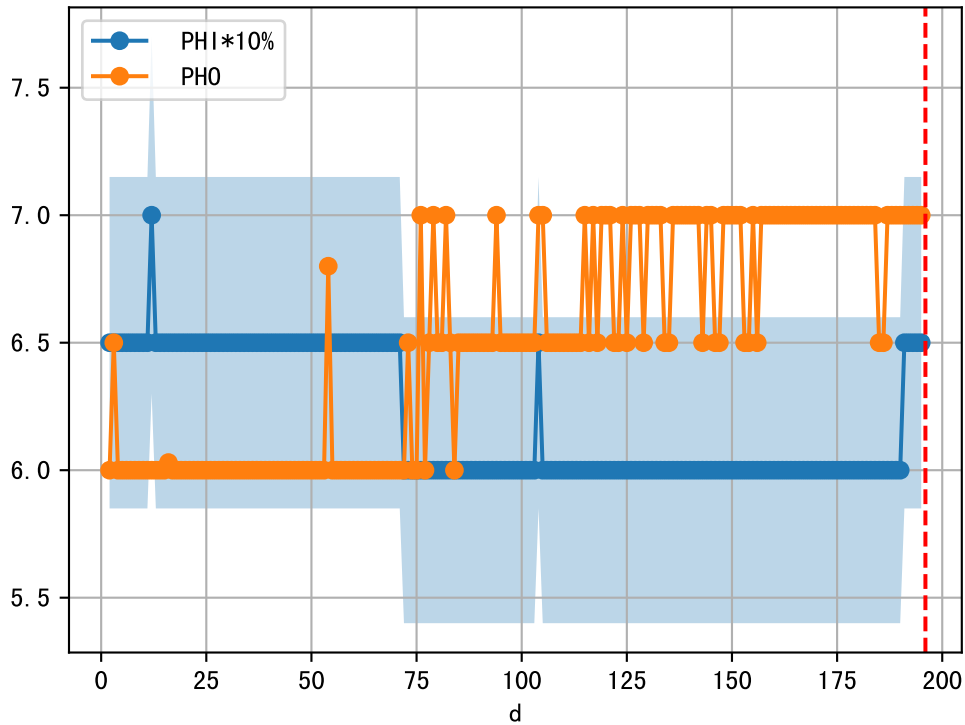




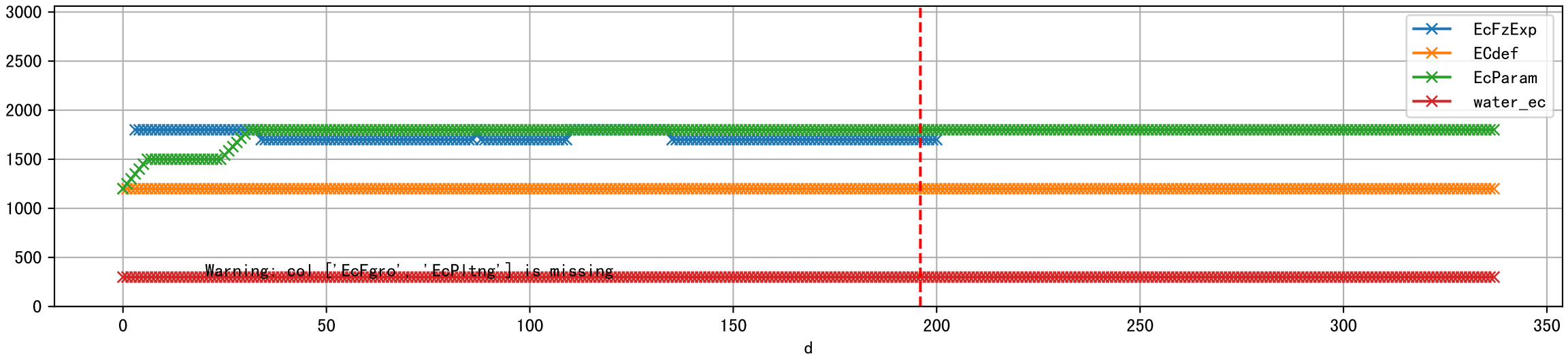


1 (fgArea = NA)

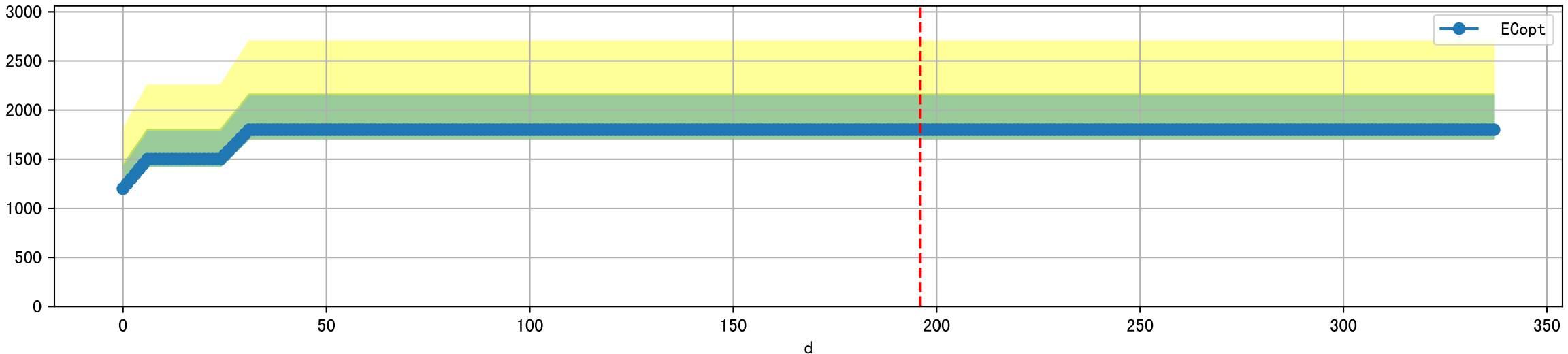




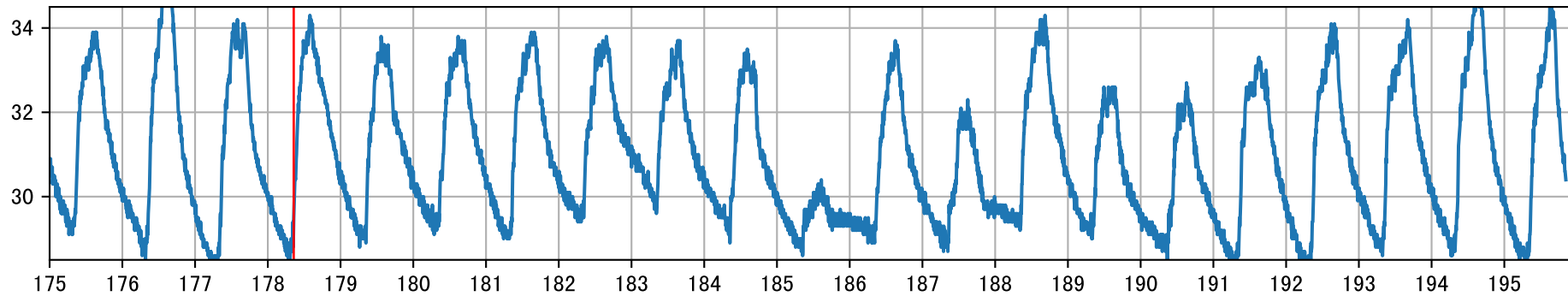
Plot [['EcFgro', 'EcFzExp', 'EcPltng', 'ECdef', 'EcParam', 'water_ec']]



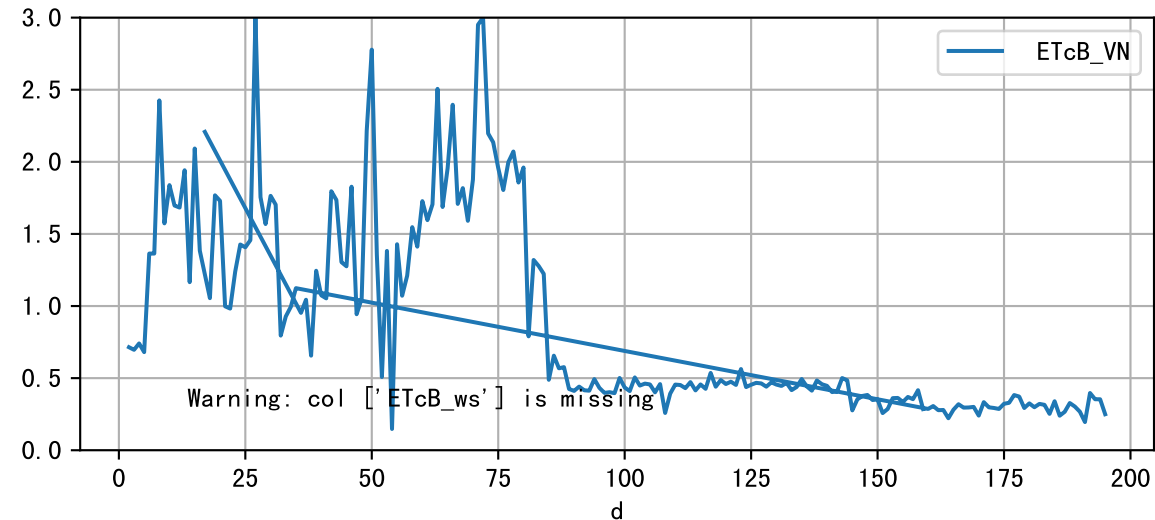
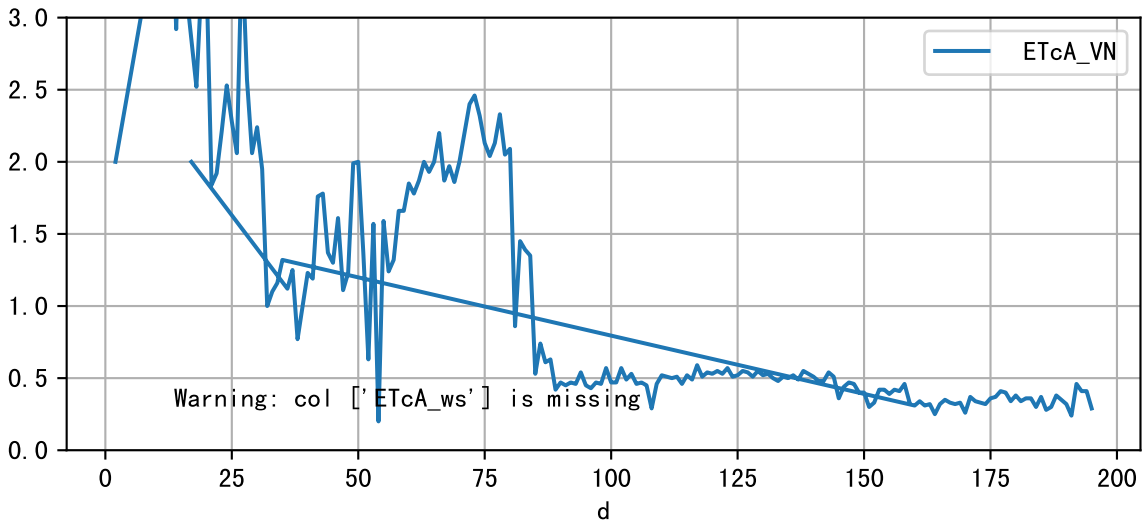
Plot [' ECopt']



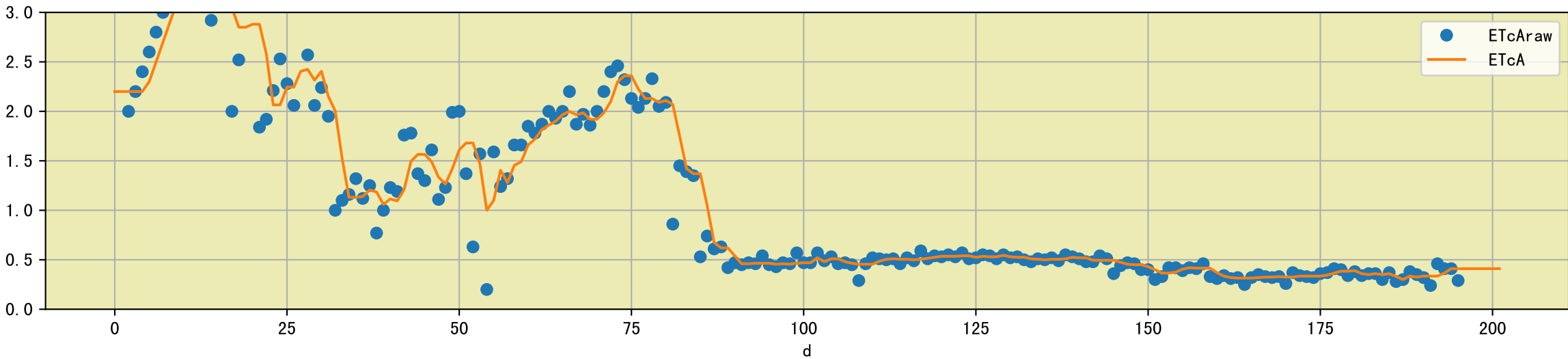
P2-4_0: M_1



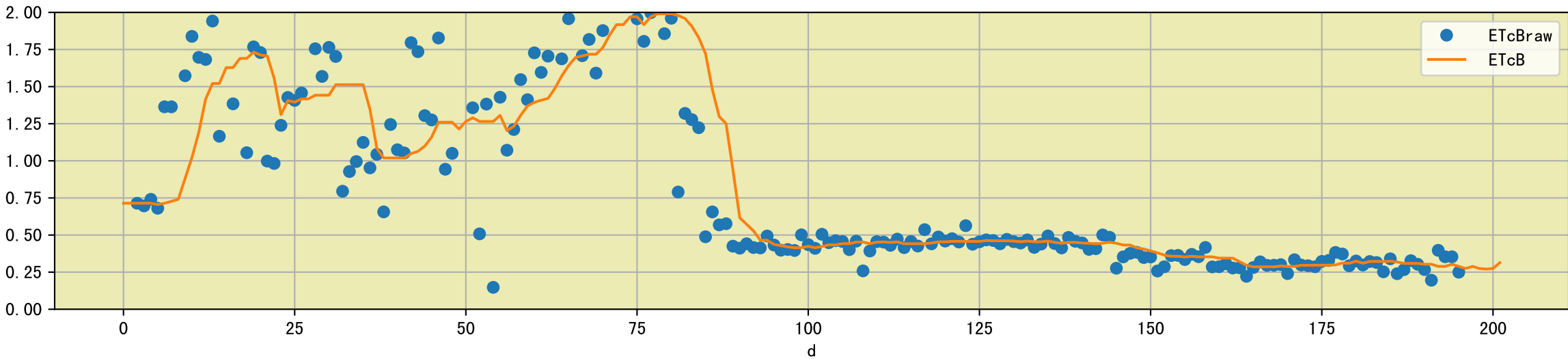
Plot [['ETcA_VN', 'ETcA_ws'], ['ETcB_VN', 'ETcB_ws']]

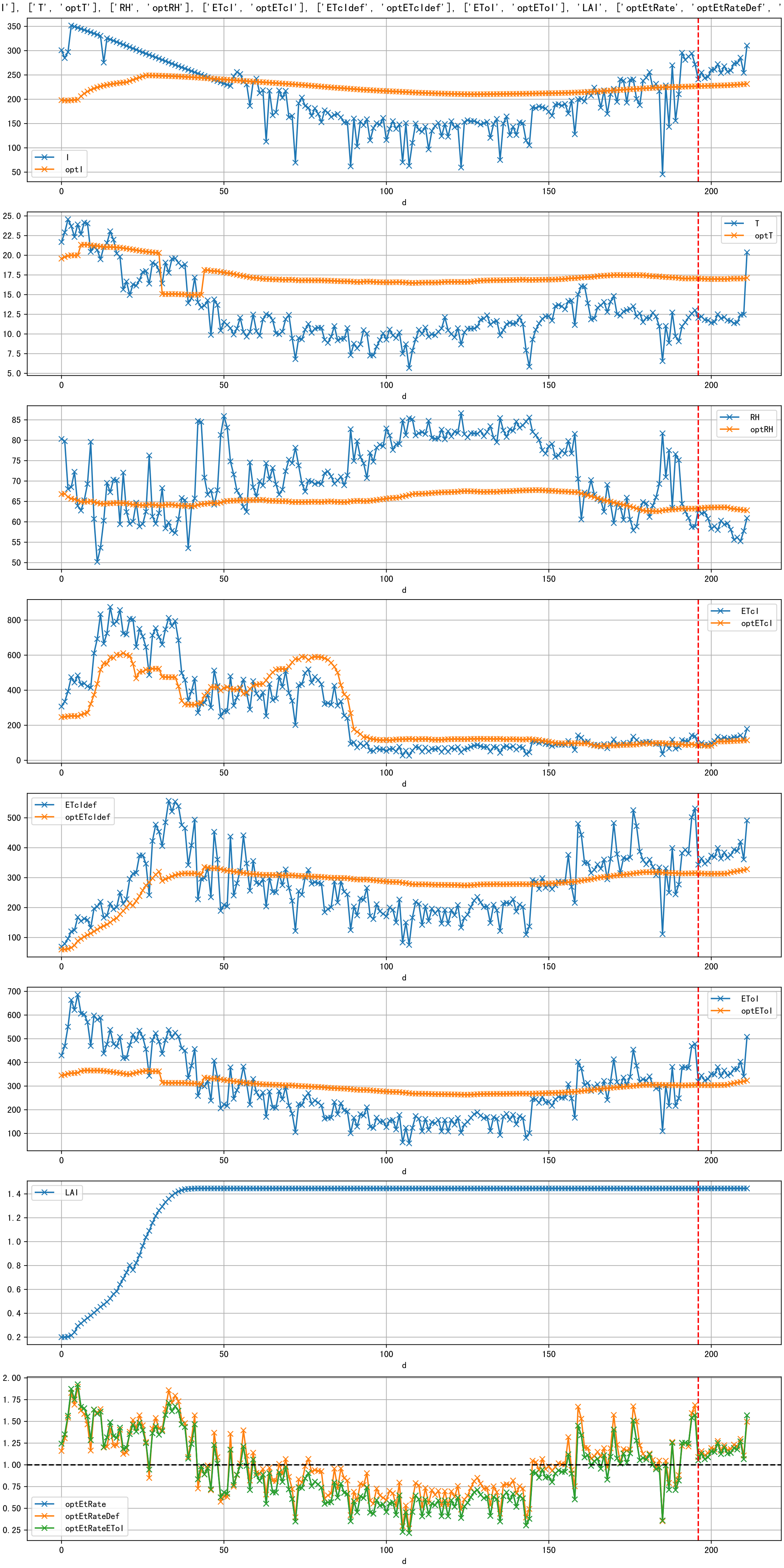


Plot [['ETcAraw:o', 'ETcA']]

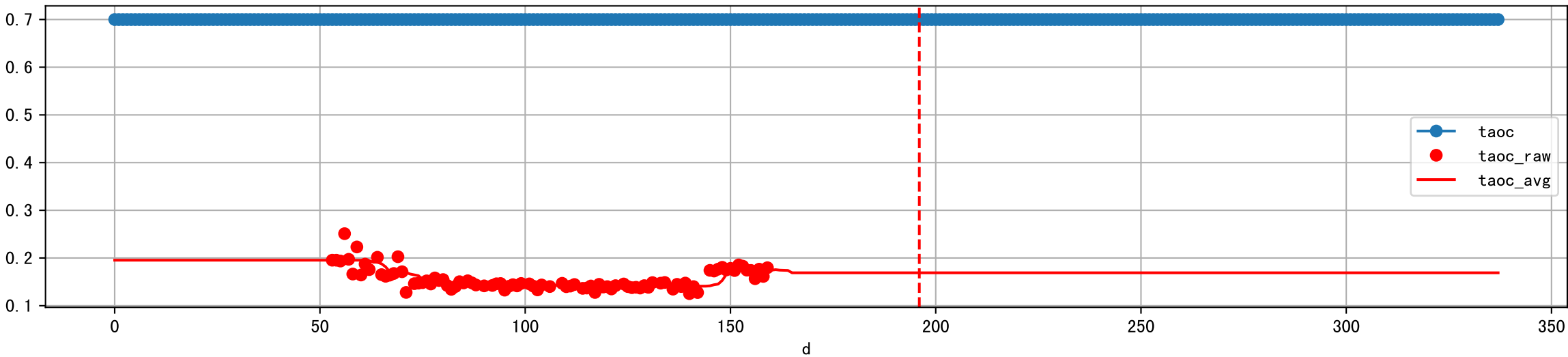


Plot [['ETcBraw:o', 'ETcB']]

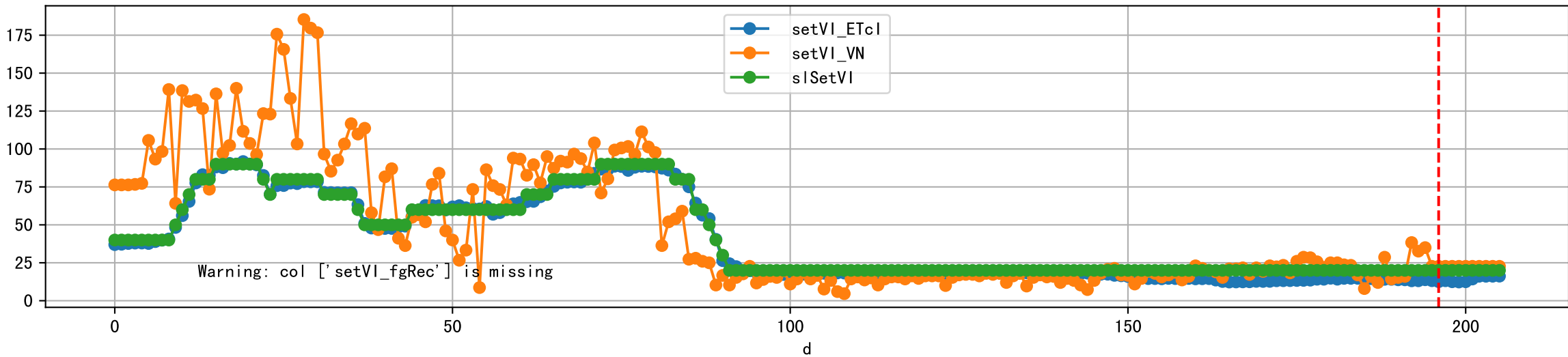




Plot [['taoc', 'taoc_raw:ro', 'taoc_avg:r-']]

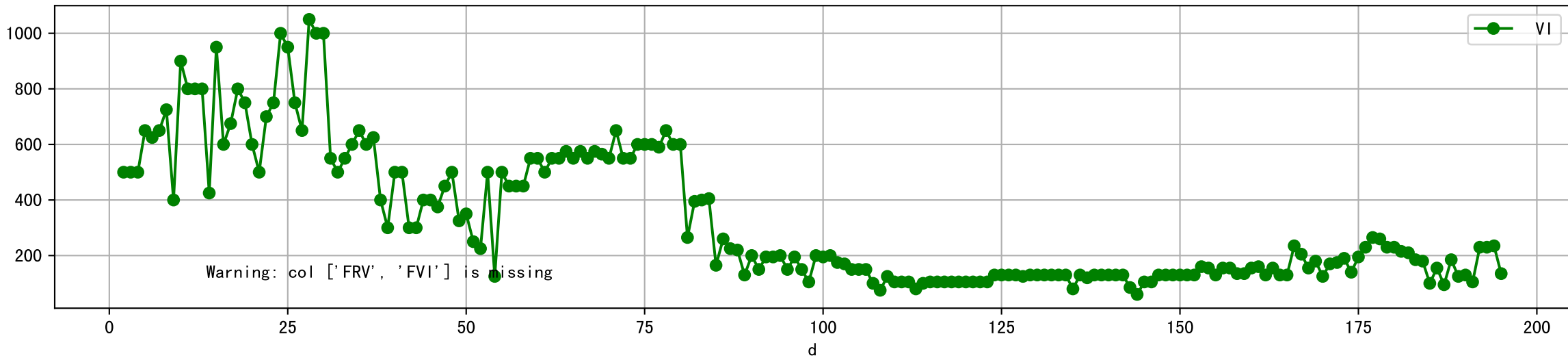


Plot [['setVI_ETcI', 'setVI_fgRec', 'setVI_VN', 'sISetVI']]

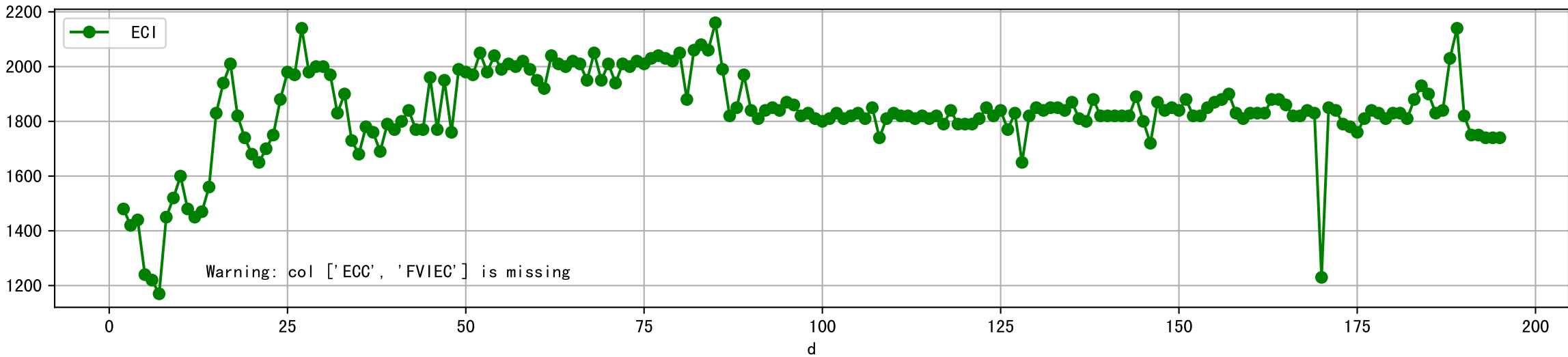




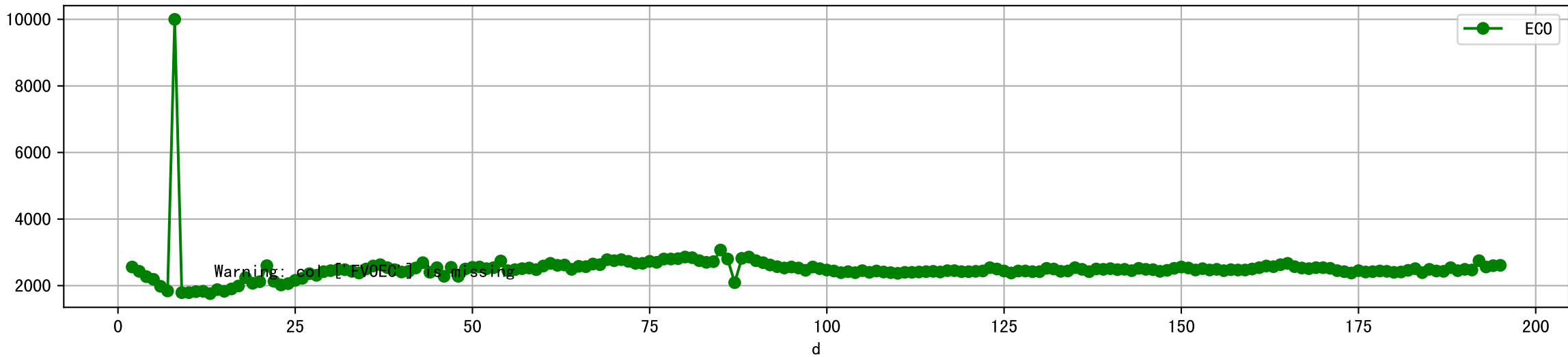
Plot [['FRV:b-o', 'FVI:r-o', 'VI:g-o']]



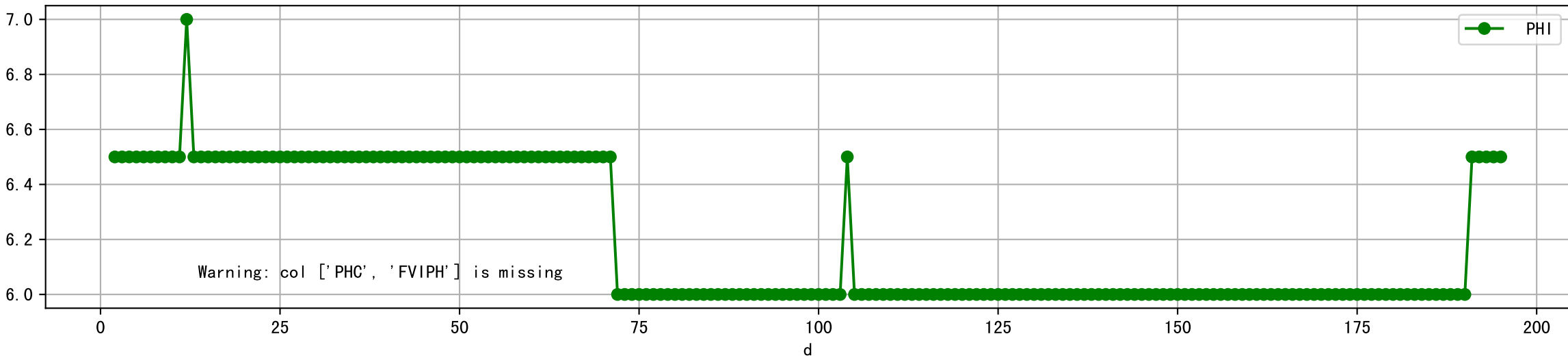
Plot [['ECC:b-o', 'FVIEC:r-o', 'ECI:g-o']]



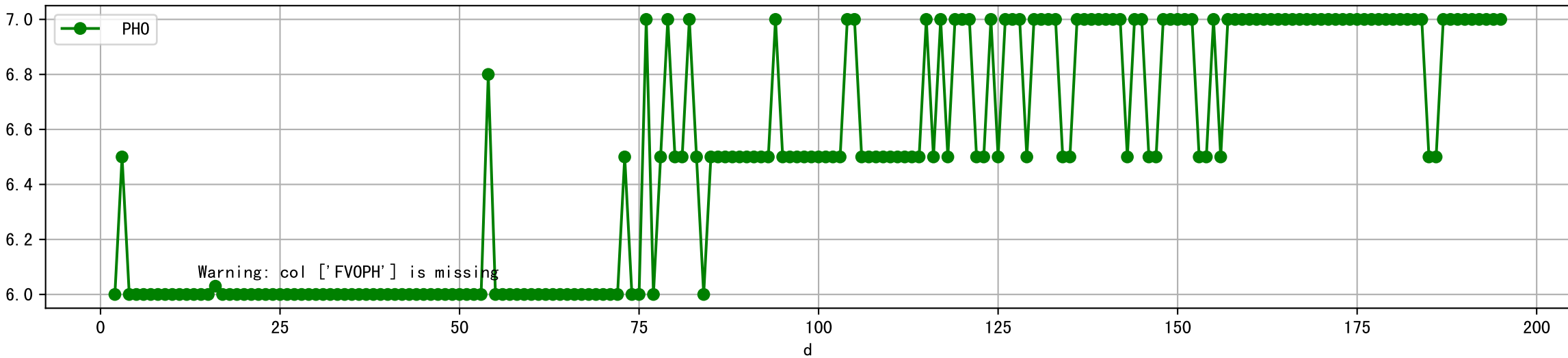
Plot [[' FV0EC:r-o', ' ECO:g-o']]



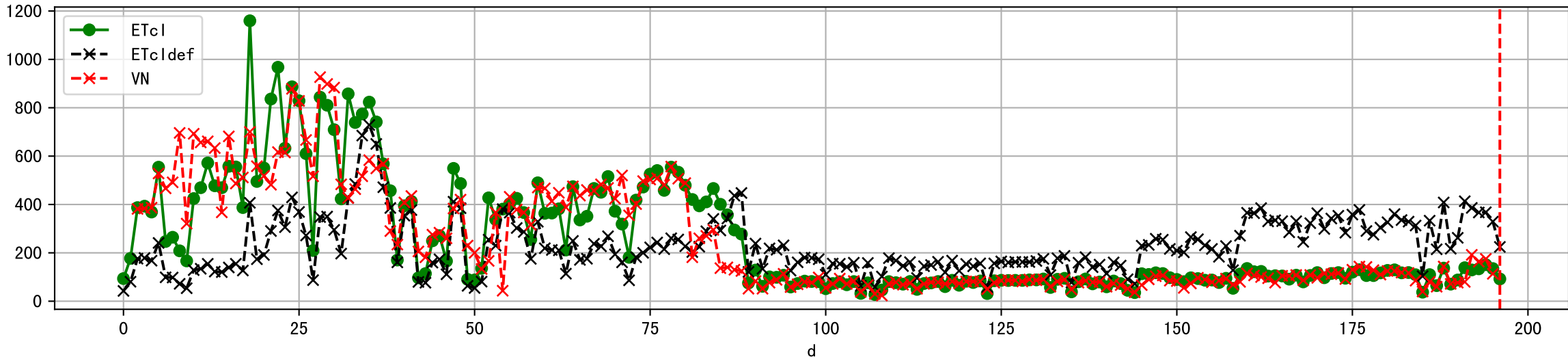
Plot [['PHC:b-o', 'FVIPH:r-o', 'PHI:g-o']]



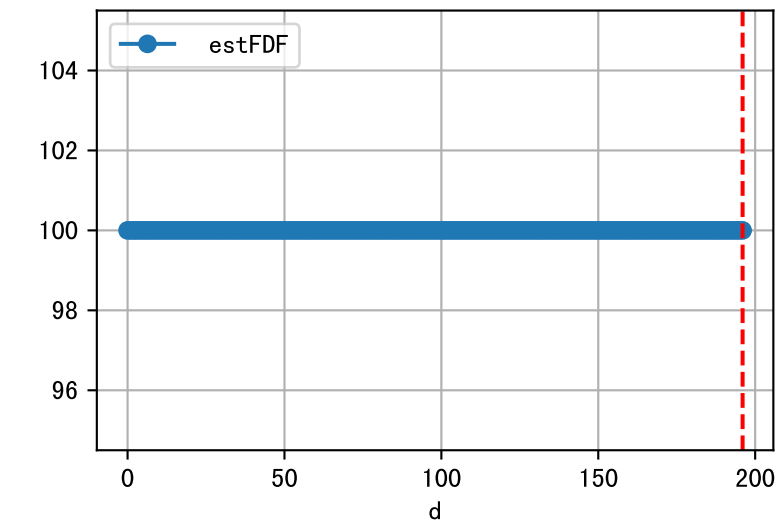
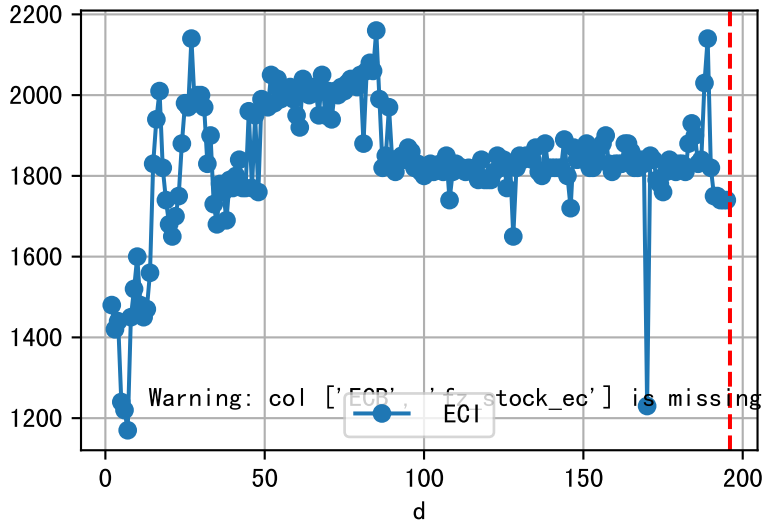
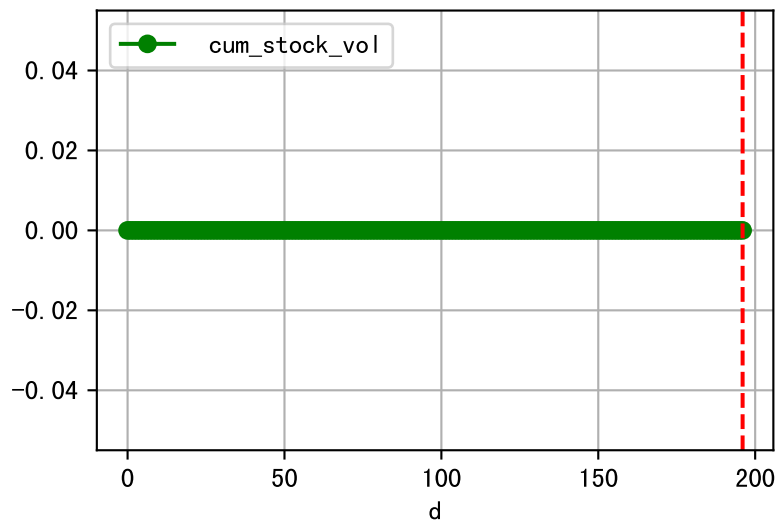
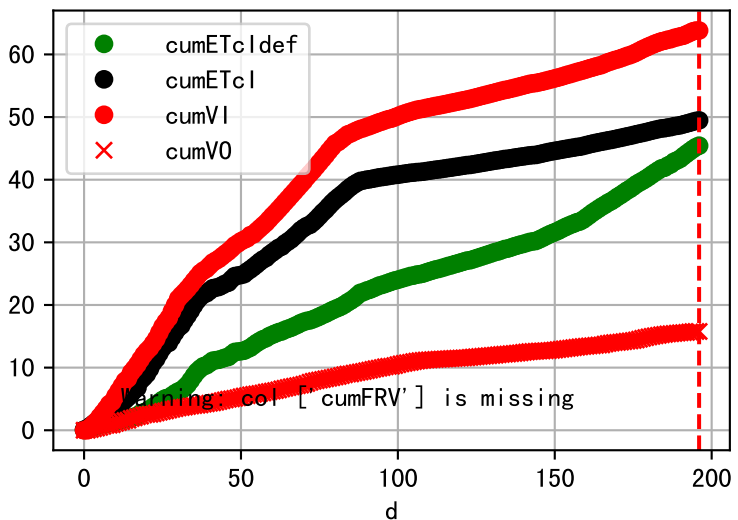
Plot [[' FVOPH:r-o', ' PHO:g-o']]



Plot ET/VN



Plot Fv and fertilizer usage

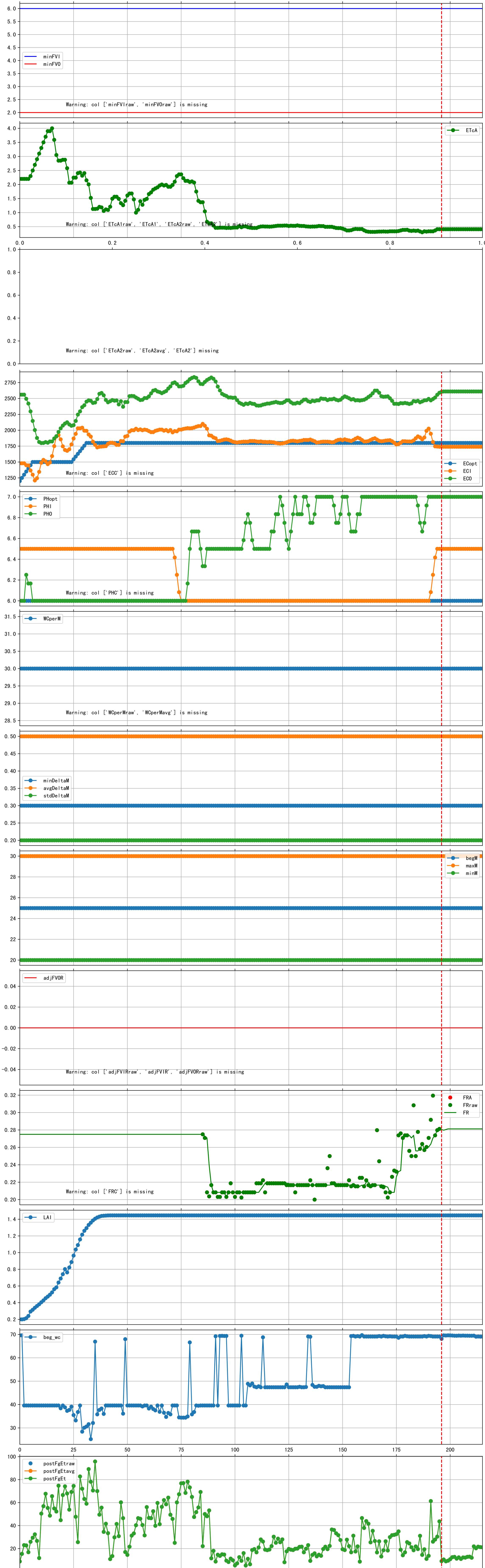




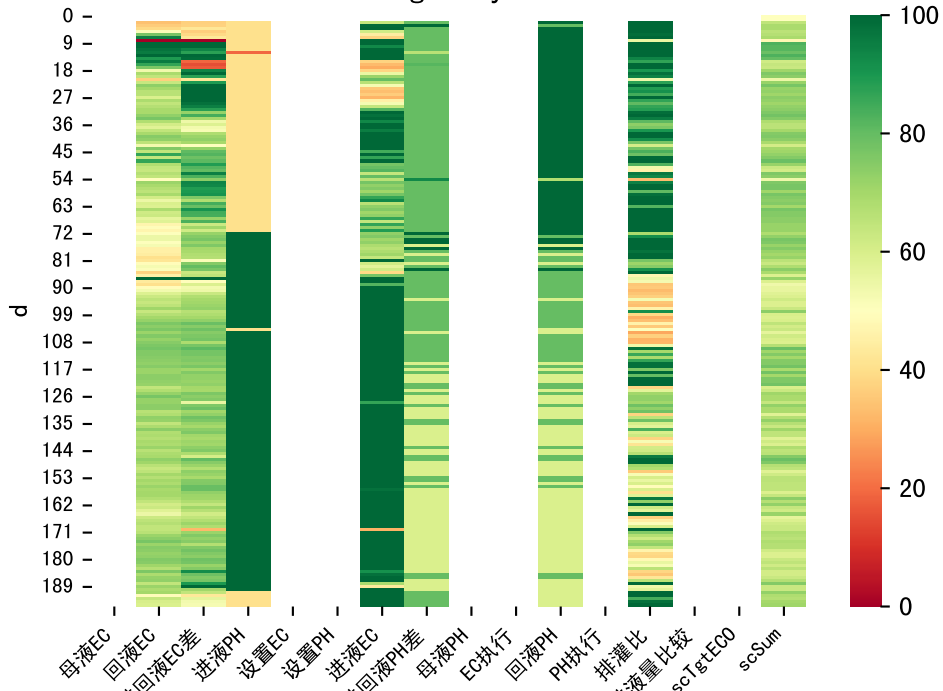
Fertilizer Range Source: kerleyL, kerleyH, UnivFL, TNAI, Haifa

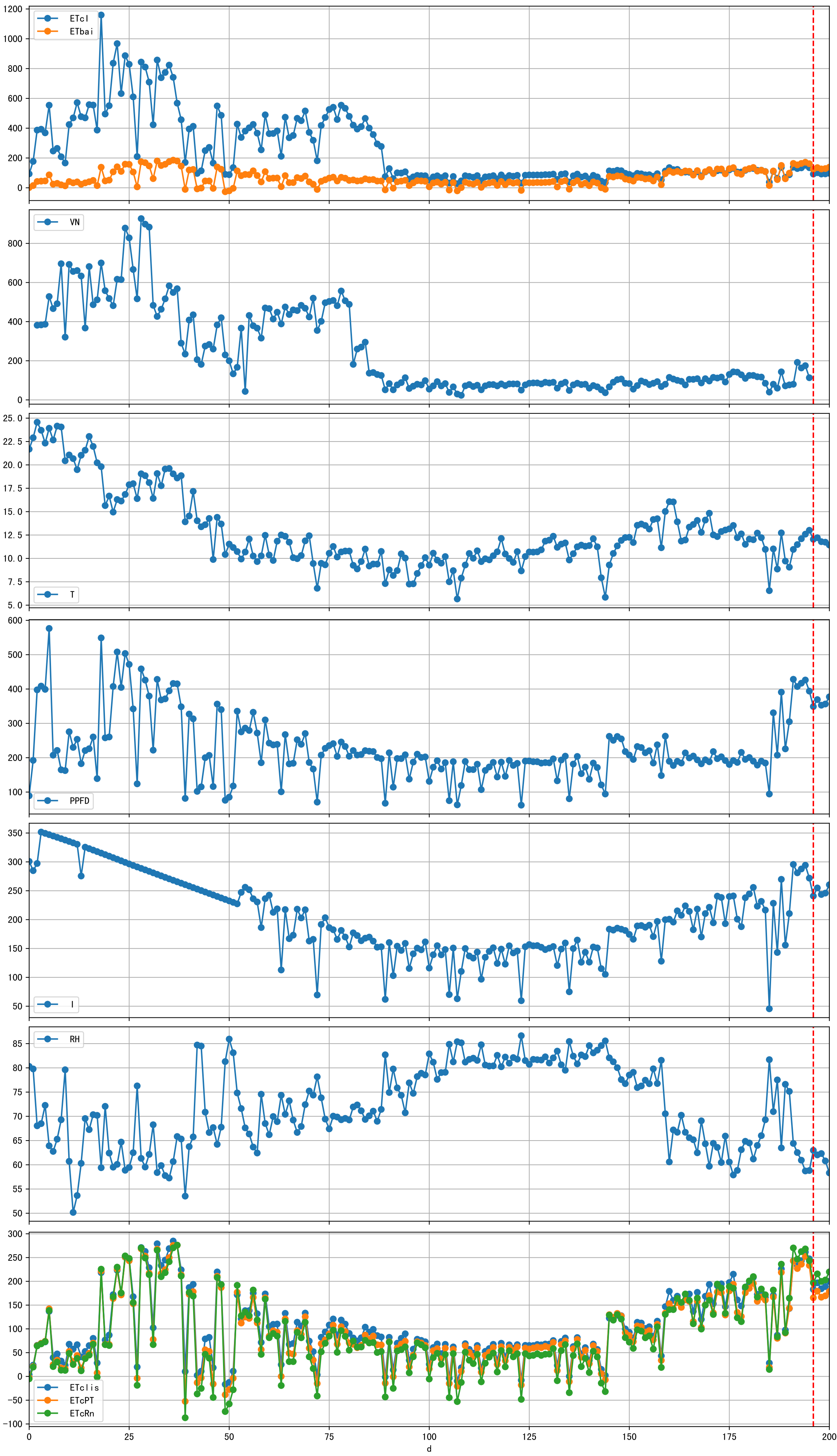


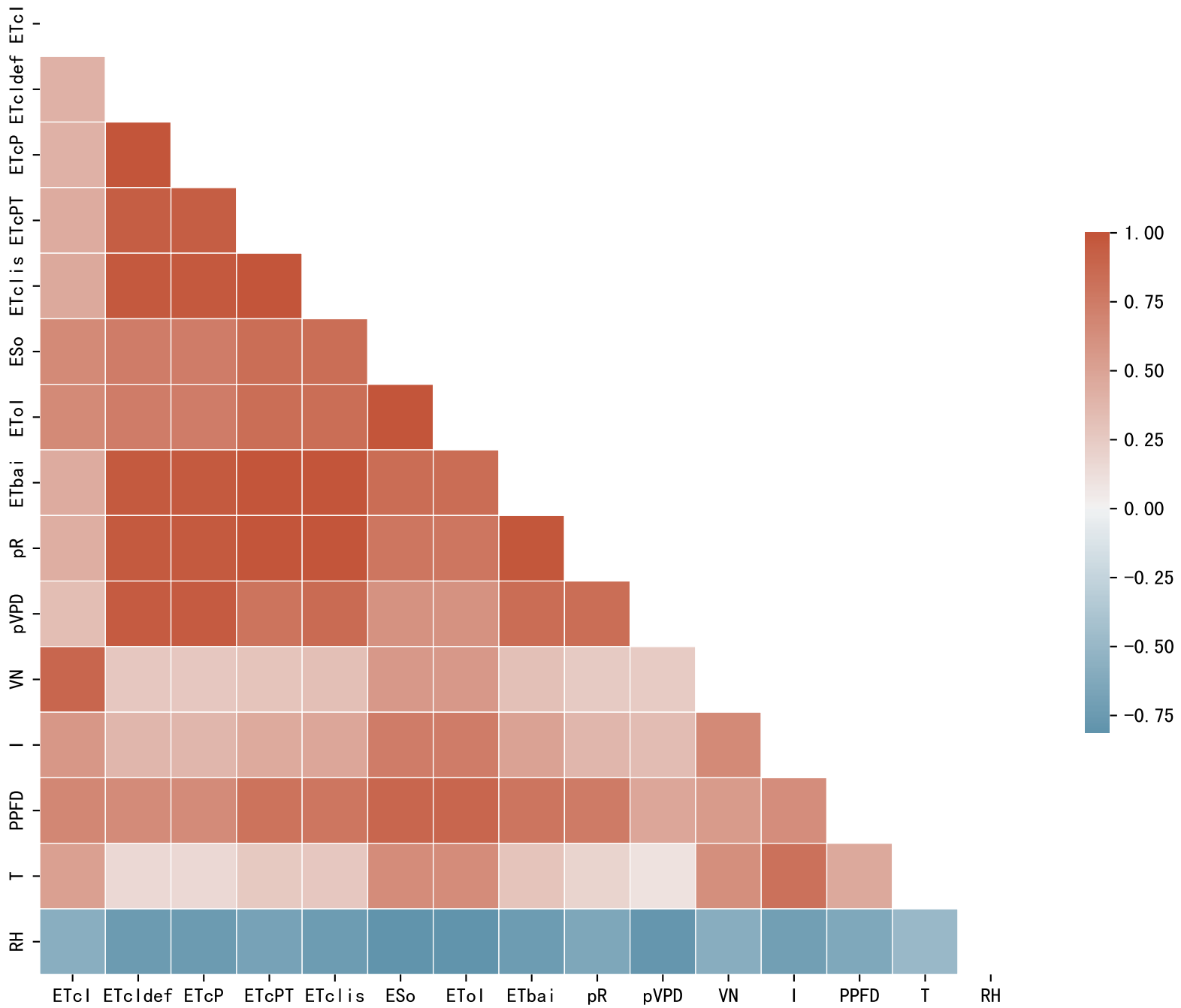
Trend plot for P2-4_0

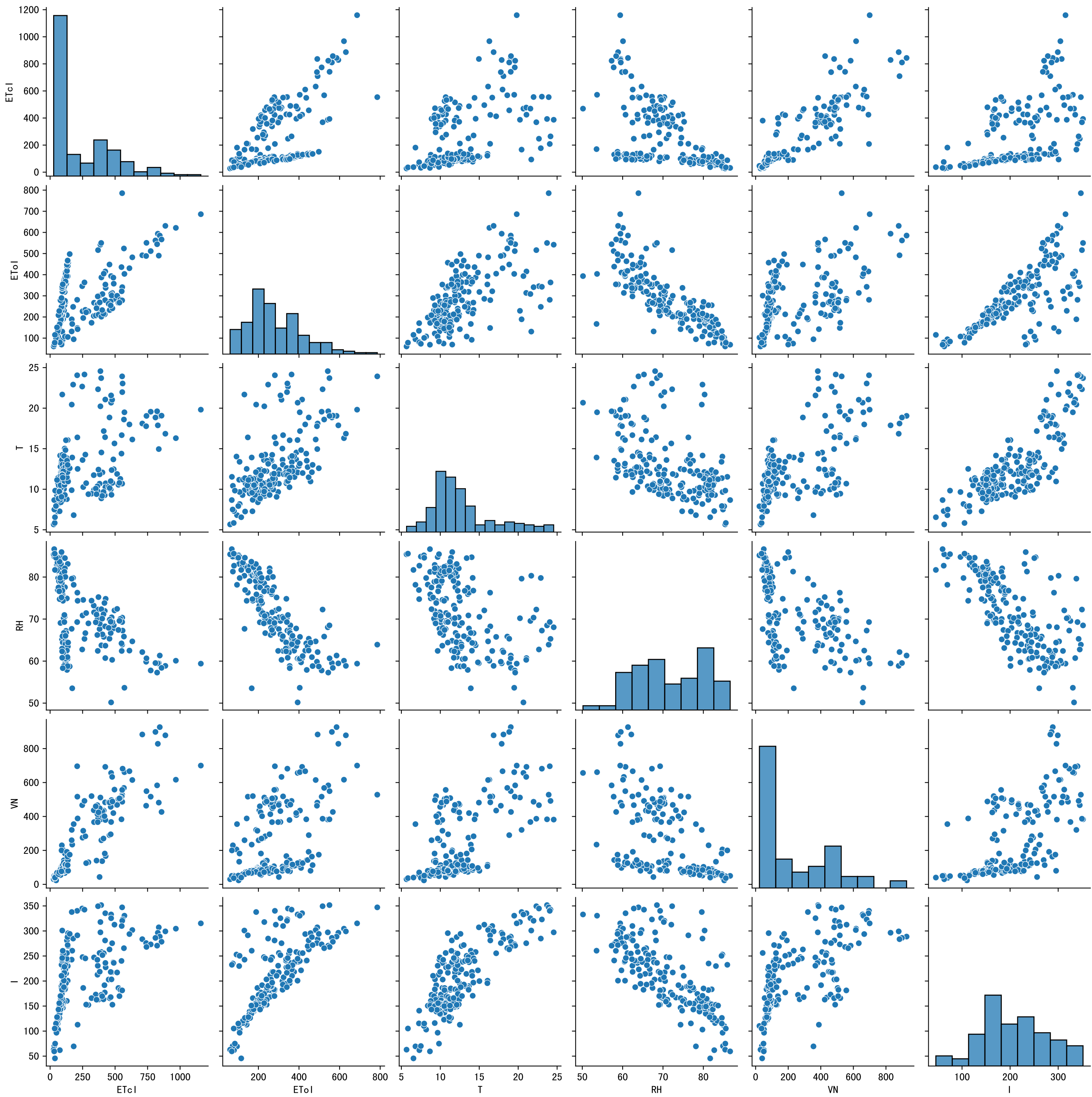


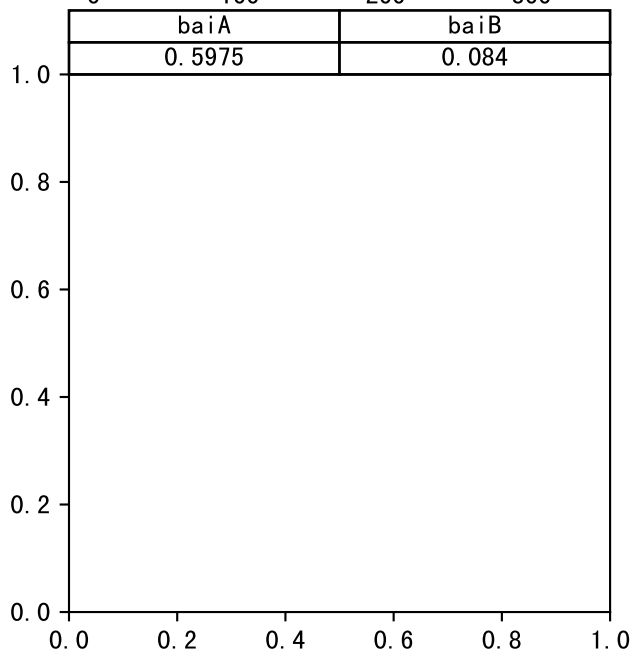
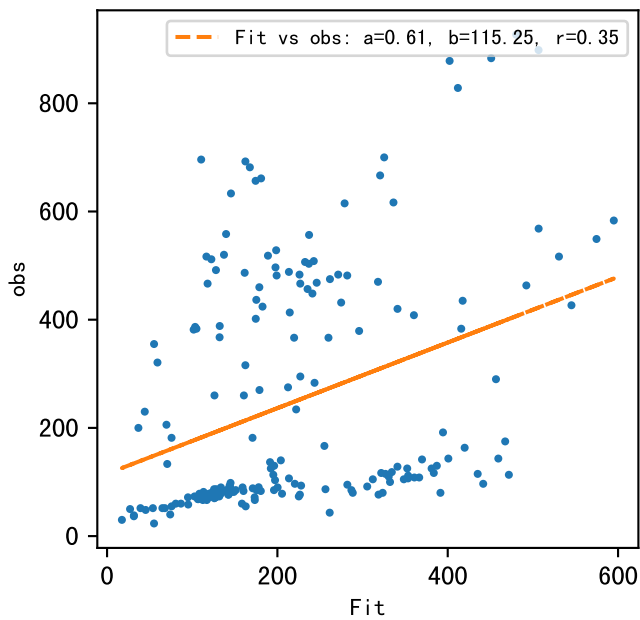
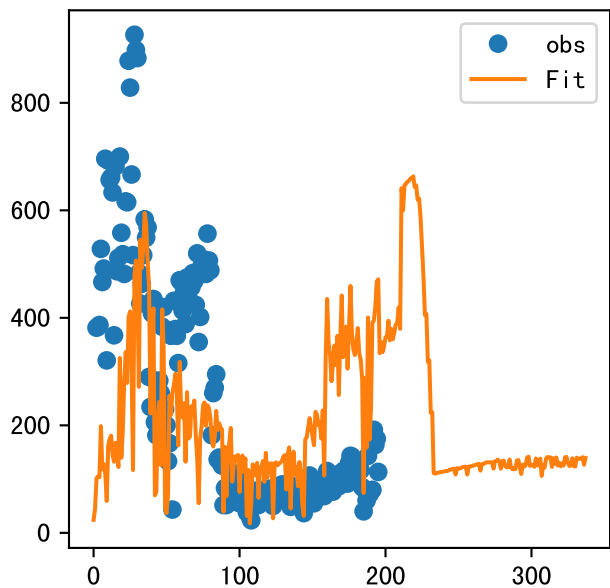
FgDaily



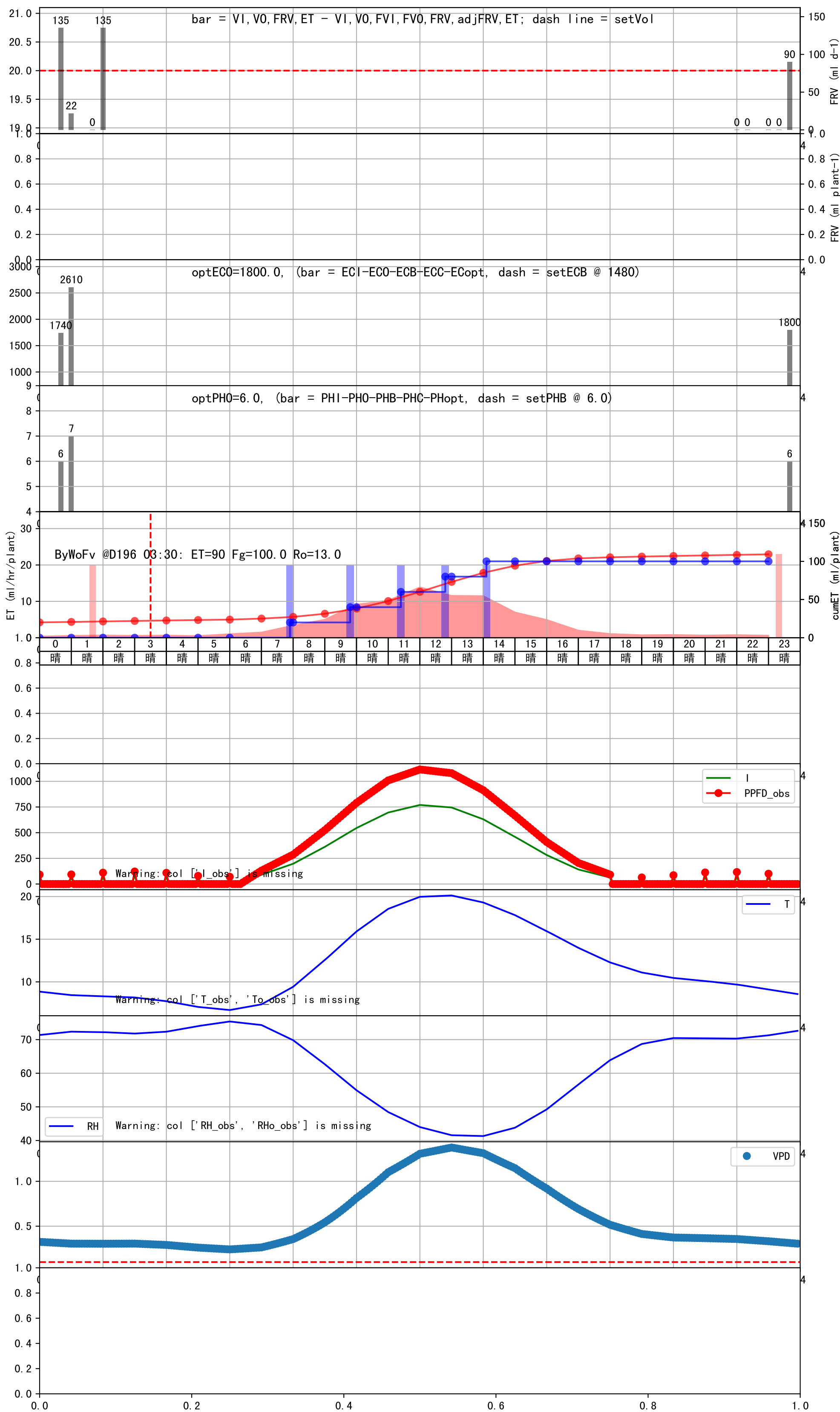




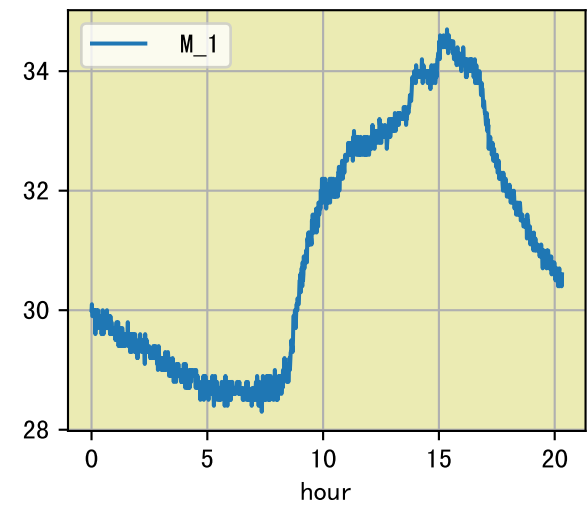




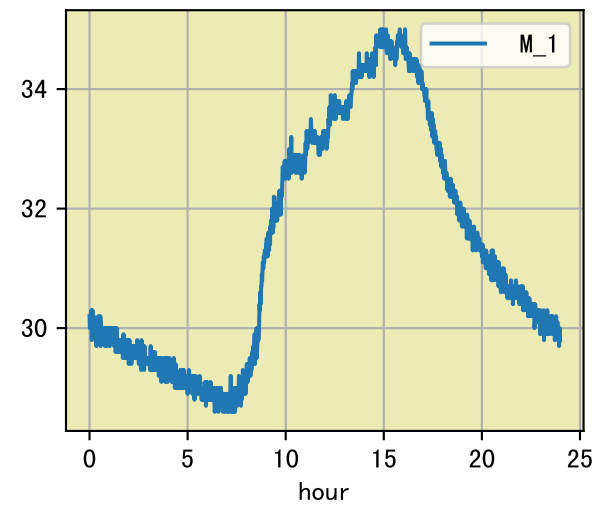
时间	灌溉时长(秒)	灌溉量(毫升/株)	灌溉总量(方/次)	天气	注释
07:55	71	20.0	0.132	晴	预期@07:55 手动 (未用传感器)
09:45	71	20.0	0.132	晴	预期@09:45 手动 (未用传感器)
11:25	71	20.0	0.132	晴	预期@11:25 手动 (未用传感器)
12:45	71	20.0	0.132	晴	预期@12:45 手动 (未用传感器)
14:05	71	20.0	0.132	晴	预期@14:05 手动 (未用传感器)
总计	355.0 (5次)	100.0			建议进液EC: 1480, PH: 6.0



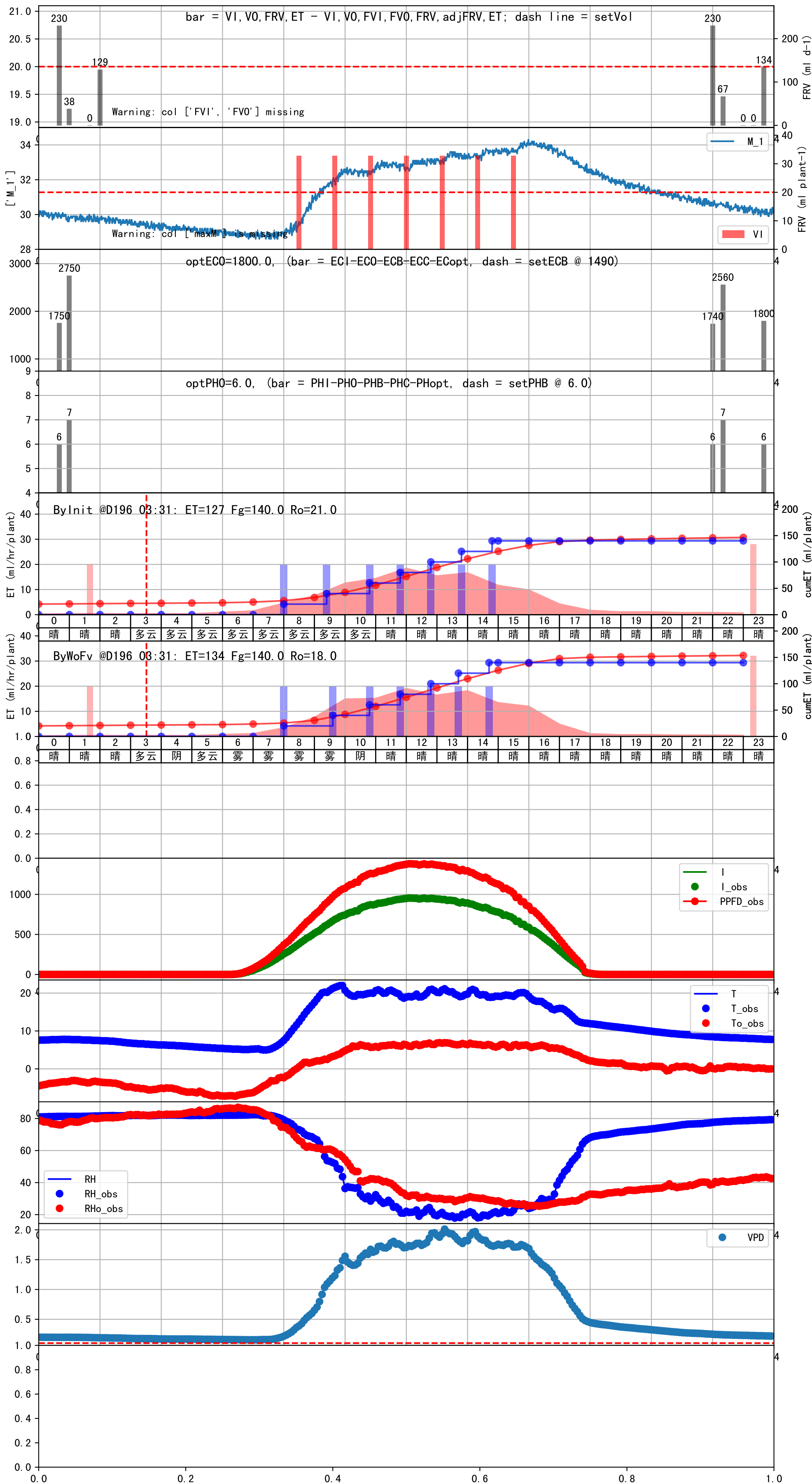
时间	灌溉时长(秒)	灌溉量(毫升/株)	灌溉总量(方/次)	天气	注释
08:00	71	20.0	0.132	晴	假设@08:00 未知程序 (未用传感器)
09:35	71	20.0	0.132	晴	假设@09:35 未知程序 (未用传感器)
10:55	71	20.0	0.132	晴	假设@10:55 未知程序 (未用传感器)
11:50	71	20.0	0.132	晴	假设@11:50 未知程序 (未用传感器)
12:45	71	20.0	0.132	晴	假设@12:45 未知程序 (未用传感器)
13:35	71	20.0	0.132	晴	假设@13:35 未知程序 (未用传感器)
14:25	71	20.0	0.132	晴	假设@14:25 未知程序 (未用传感器)
15:25	71	20.0	0.132	晴	假设@15:25 未知程序 (未用传感器)
总计	568.0 (8次)	160.0			建议进液EC: 1480, PH: 6.0

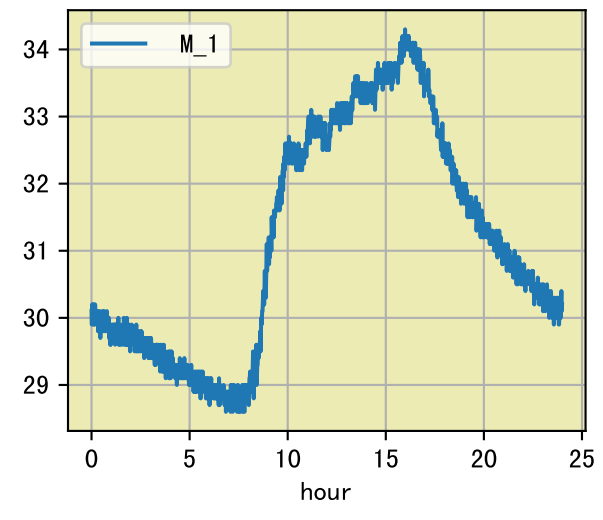


时间	灌溉时长(秒)	灌溉量(毫升/株)	灌溉总量(方/次)	天气	注释
08:00	74	20.0	0.132	晴	假设@08:00 未知程序 (未用传感器)
09:20	74	20.0	0.132	晴	假设@09:20 未知程序 (未用传感器)
10:30	74	20.0	0.132	晴	假设@10:30 未知程序 (未用传感器)
11:30	74	20.0	0.132	晴	假设@11:30 未知程序 (未用传感器)
12:25	74	20.0	0.132	晴	假设@12:25 未知程序 (未用传感器)
13:15	74	20.0	0.132	晴	假设@13:15 未知程序 (未用传感器)
14:05	74	20.0	0.132	晴	假设@14:05 未知程序 (未用传感器)
15:05	74	20.0	0.132	晴	假设@15:05 未知程序 (未用传感器)
总计	592.0 (8次)	160.0			建议进液EC: 1480, PH: 6.0



时间	灌溉时长(秒)	灌溉量(毫升/株)	灌溉总量(方/次)	天气	注释
08:00	74	20.0	0.132	雾	假设@08:00 未知程序 (未用传感器)
09:35	74	20.0	0.132	雾	假设@09:35 未知程序 (未用传感器)
10:45	74	20.0	0.132	阴	假设@10:45 未知程序 (未用传感器)
11:45	74	20.0	0.132	晴	假设@11:45 未知程序 (未用传感器)
12:45	74	20.0	0.132	晴	假设@12:45 未知程序 (未用传感器)
13:40	74	20.0	0.132	晴	假设@13:40 未知程序 (未用传感器)
14:40	74	20.0	0.132	晴	假设@14:40 未知程序 (未用传感器)
总计	518.0 (7次)	140.0			建议进液EC: 1490, PH: 6.0





时间	灌溉时长(秒)	灌溉量(毫升/株)	灌溉总量(方/次)	天气	注释
08:05	77	20.0	0.132	雾	假设@08:05 未知程序 (未用传感器)
09:55	77	20.0	0.132	雾	假设@09:55 未知程序 (未用传感器)
10:55	77	20.0	0.132	晴	假设@10:55 未知程序 (未用传感器)
11:50	77	20.0	0.132	晴	假设@11:50 未知程序 (未用传感器)
12:45	77	20.0	0.132	晴	假设@12:45 未知程序 (未用传感器)
13:40	77	20.0	0.132	晴	假设@13:40 未知程序 (未用传感器)
14:35	77	20.0	0.132	多云	假设@14:35 未知程序 (未用传感器)
总计	539.0 (7次)	140.0			建议进液EC: 1490, PH: 6.0

