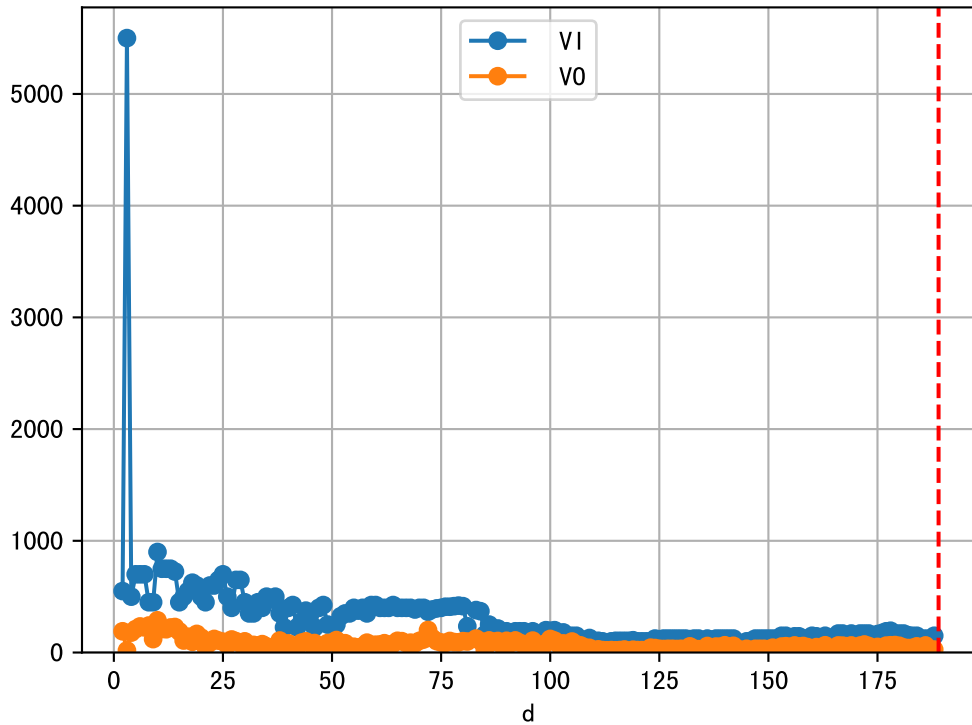
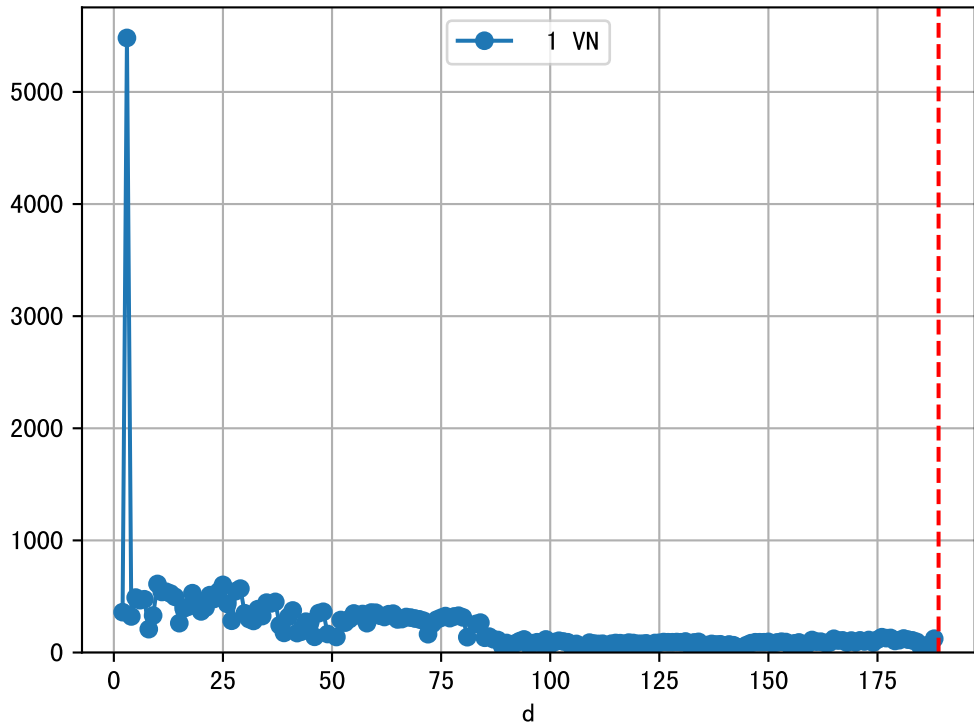
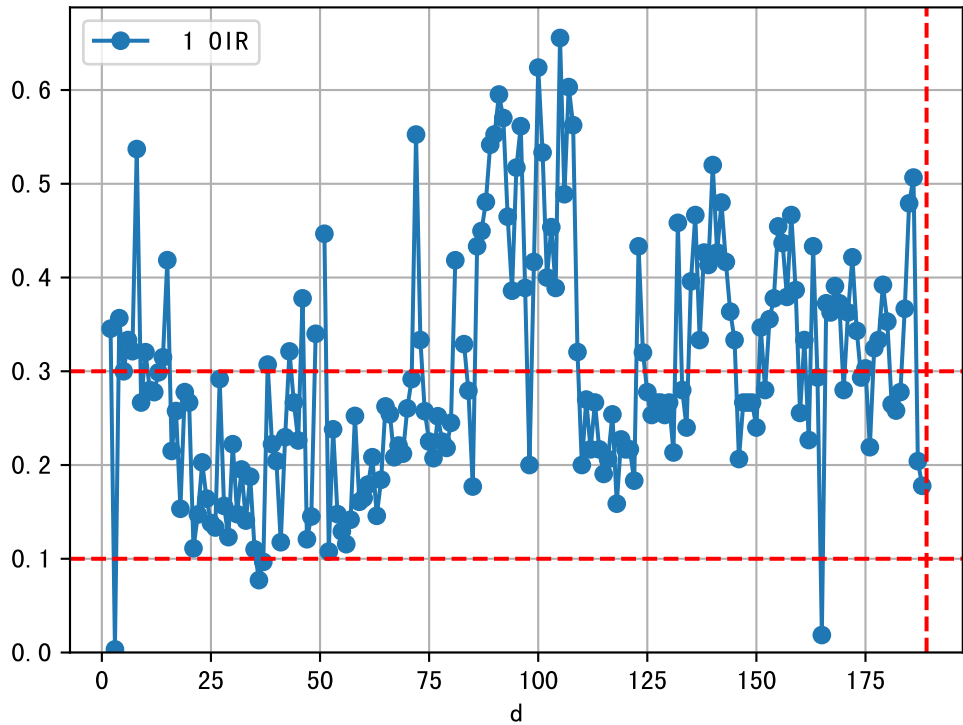


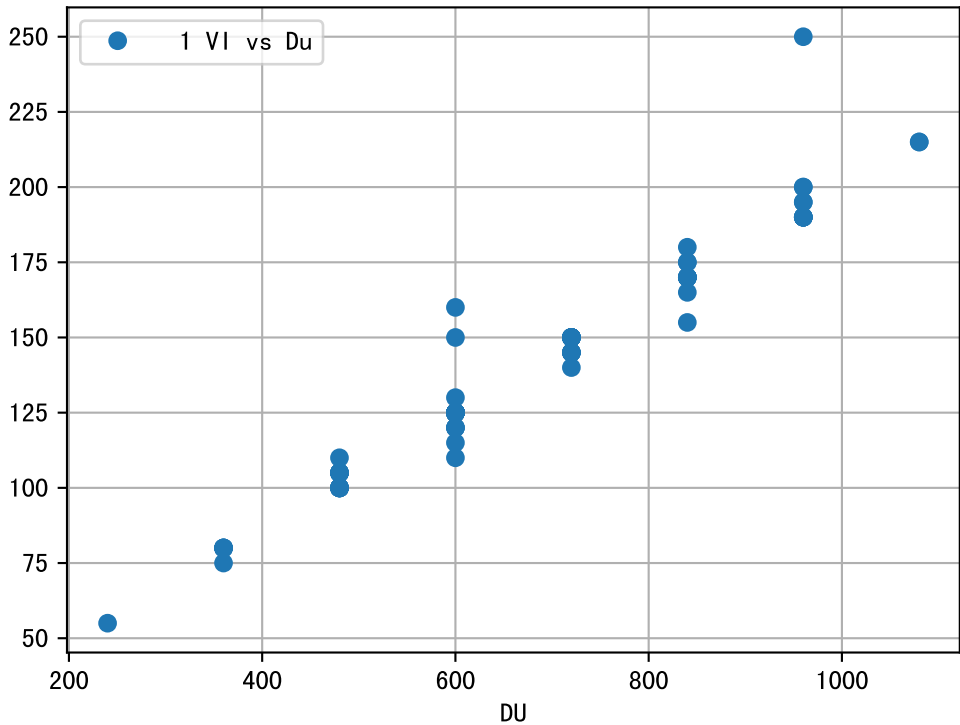
FgArea: [' 0']
NC11 P2-8
2026-03-04 (Day 189)

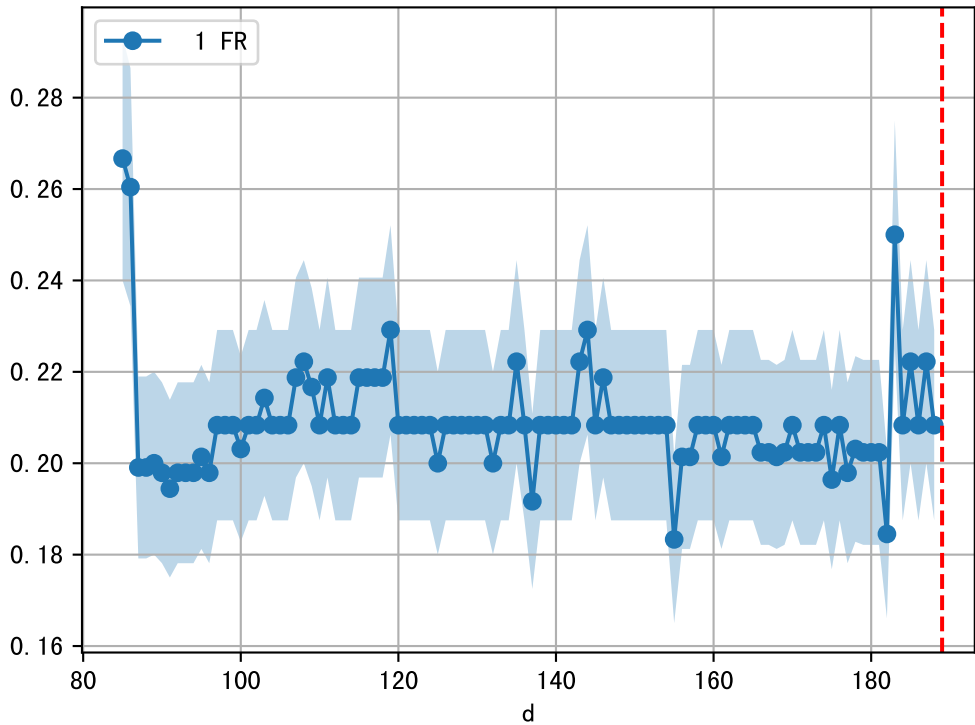
fgNum 1 (at_row = 80)

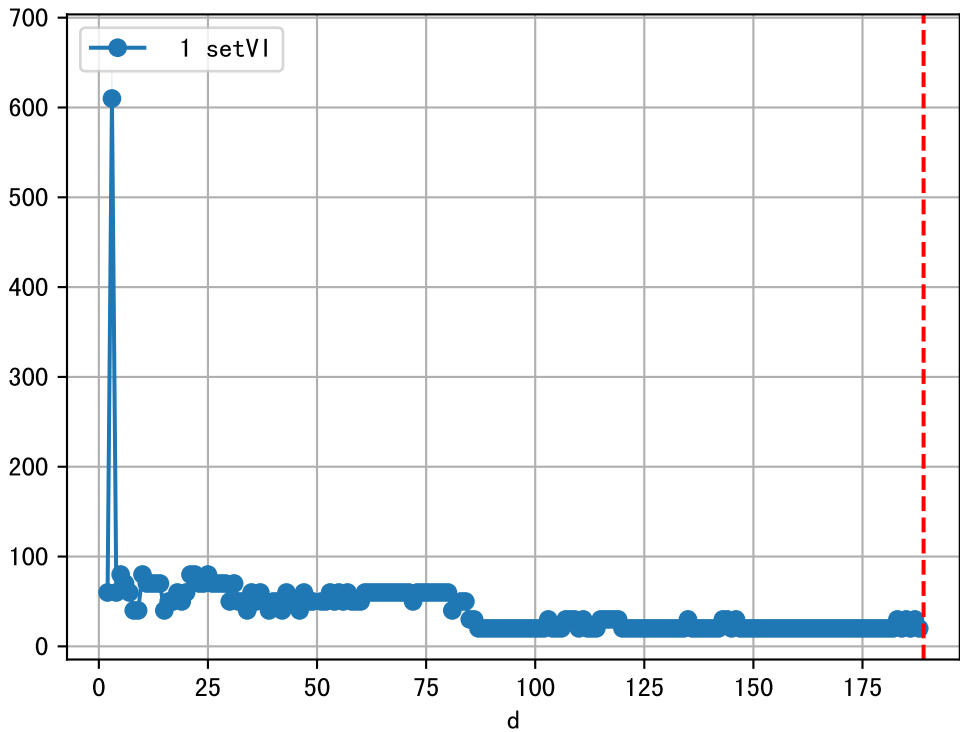




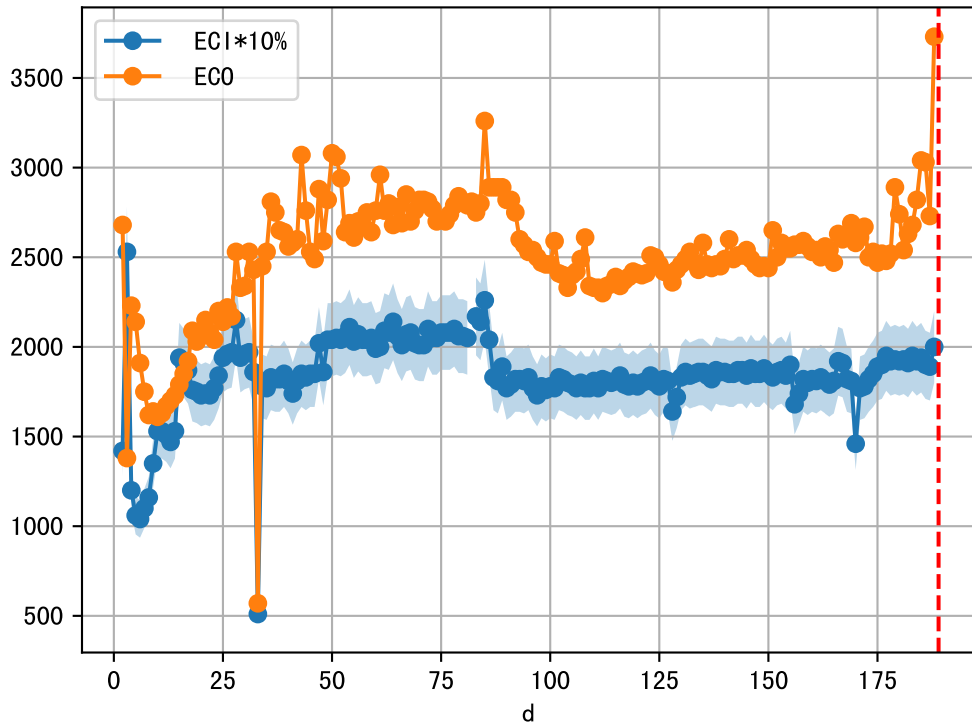


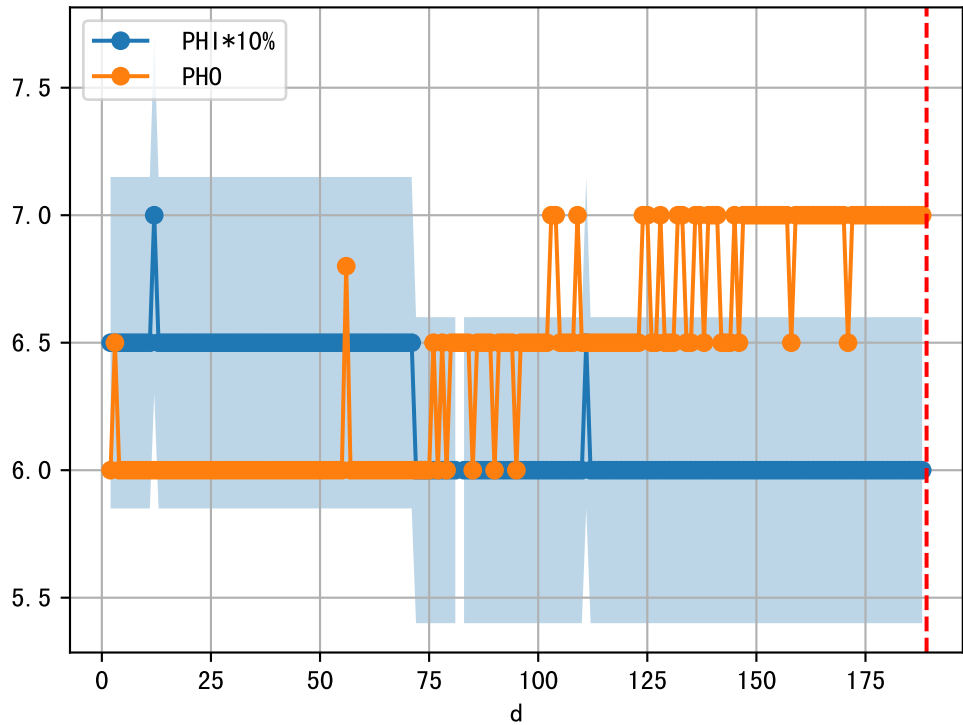




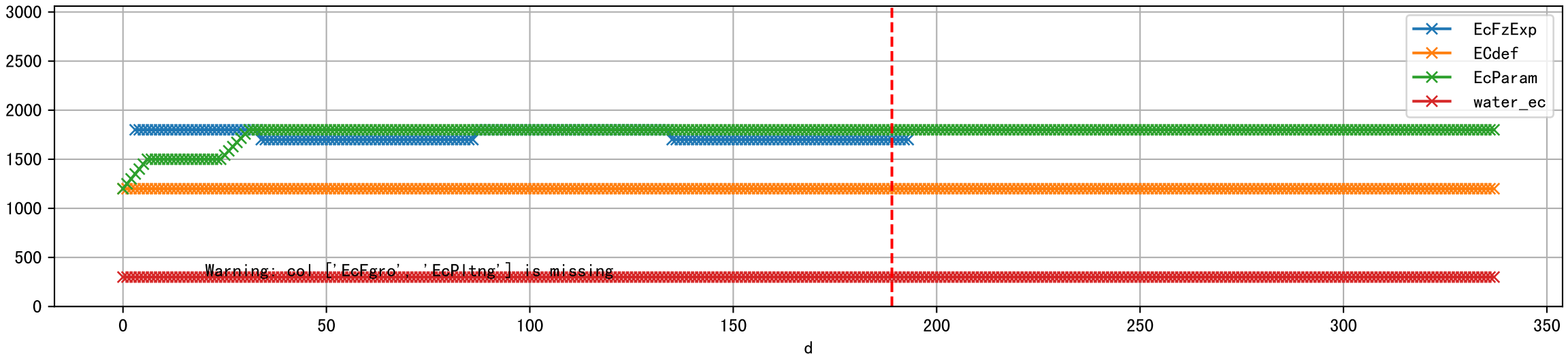


1 (fgArea = NA)

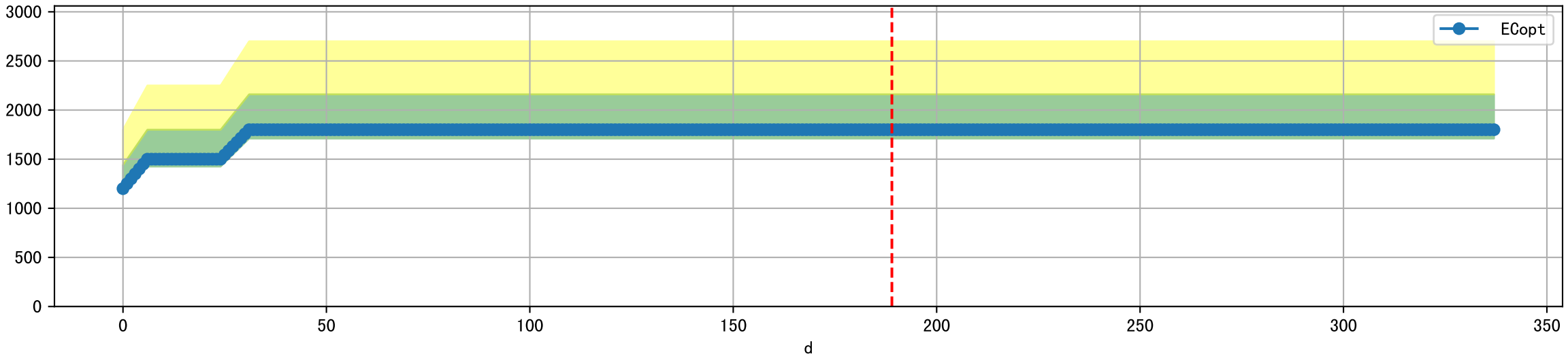




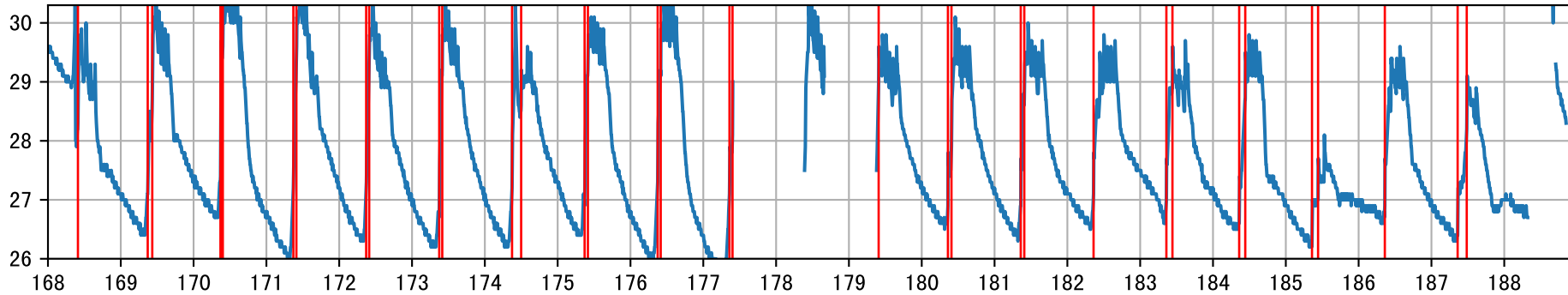
Plot [['EcFgro', 'EcFzExp', 'EcPltng', 'ECdef', 'EcParam', 'water_ec']]



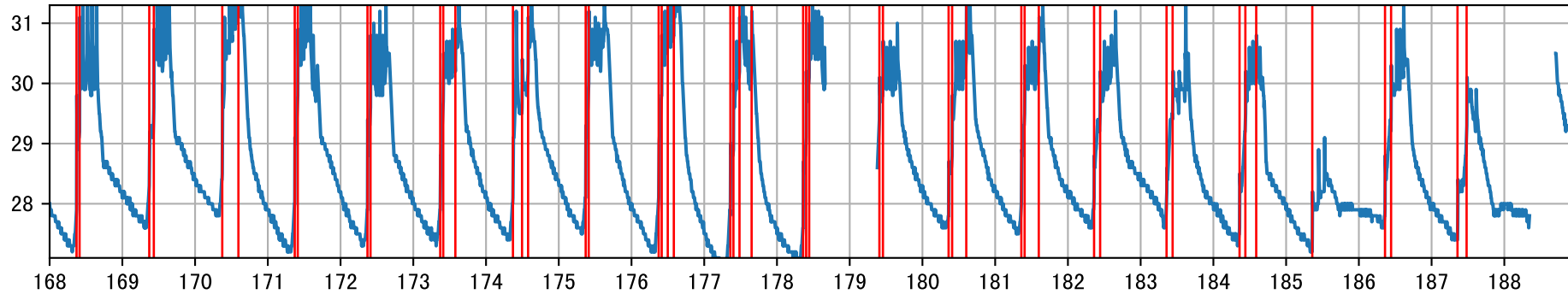
Plot [' ECopt']



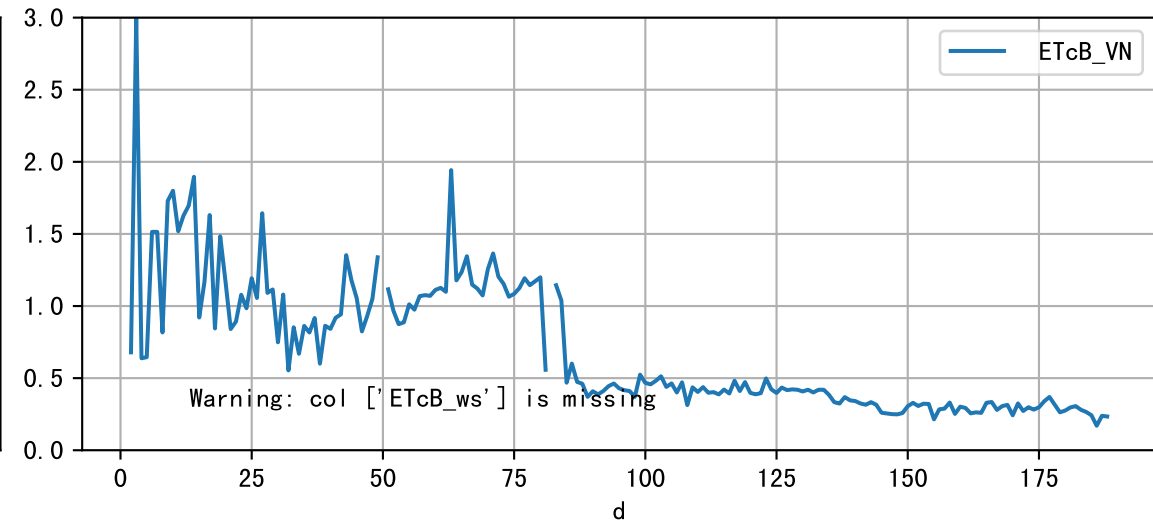
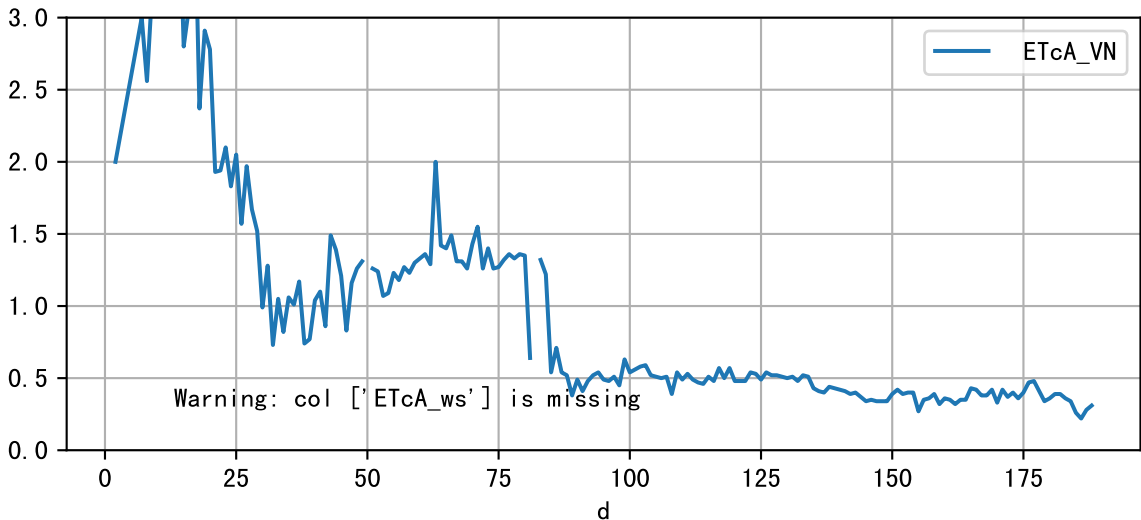
P2-8_0: M_E



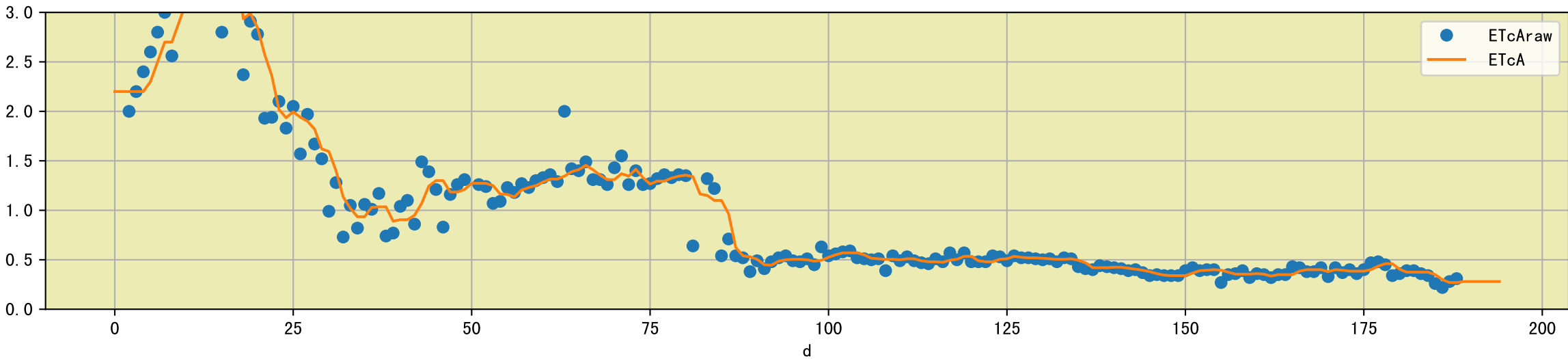
P2-8_0: M_W



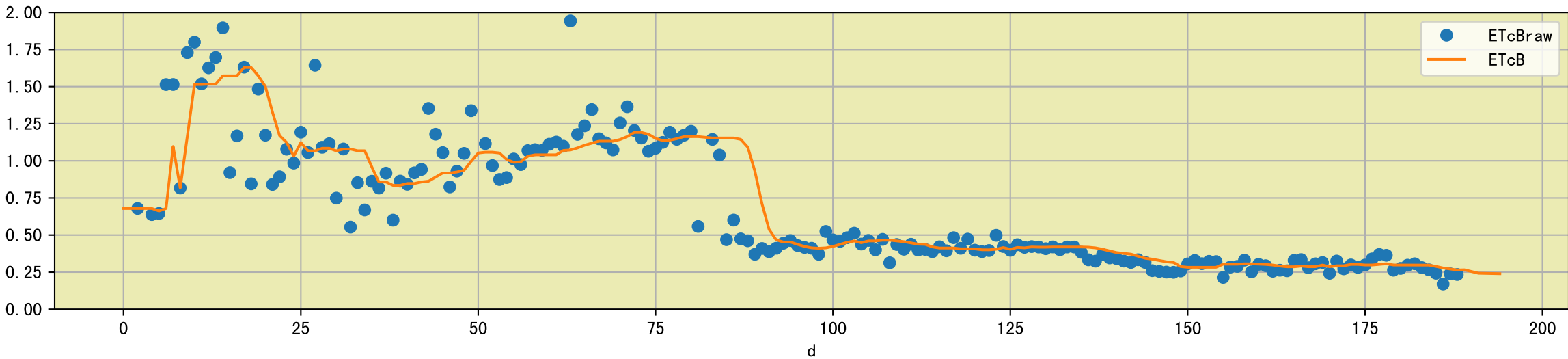
Plot [['ETcA_VN', 'ETcA_ws'], ['ETcB_VN', 'ETcB_ws']]

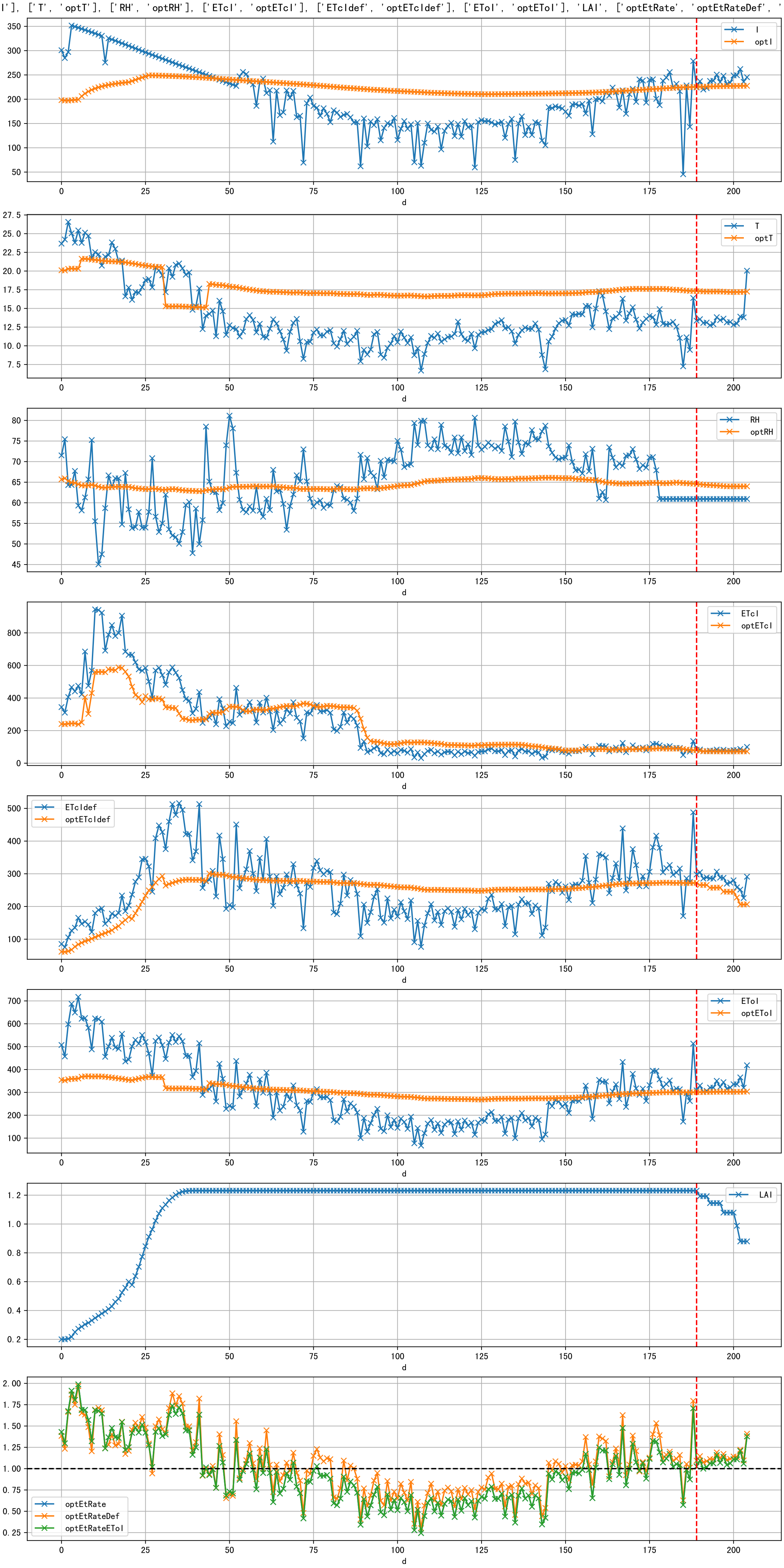


Plot [['ETcAraw:o', 'ETcA']]

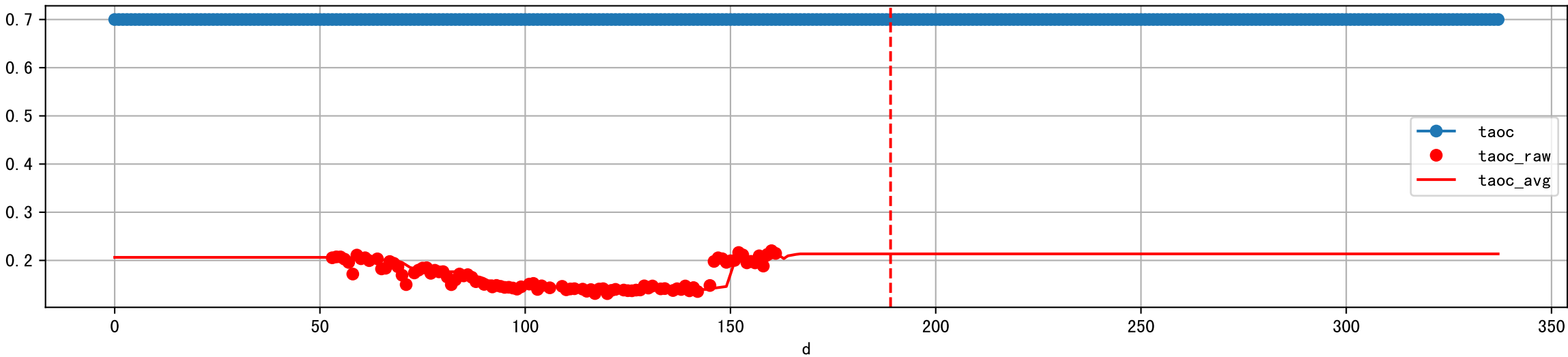


Plot [['ETcBraw:o', 'ETcB']]

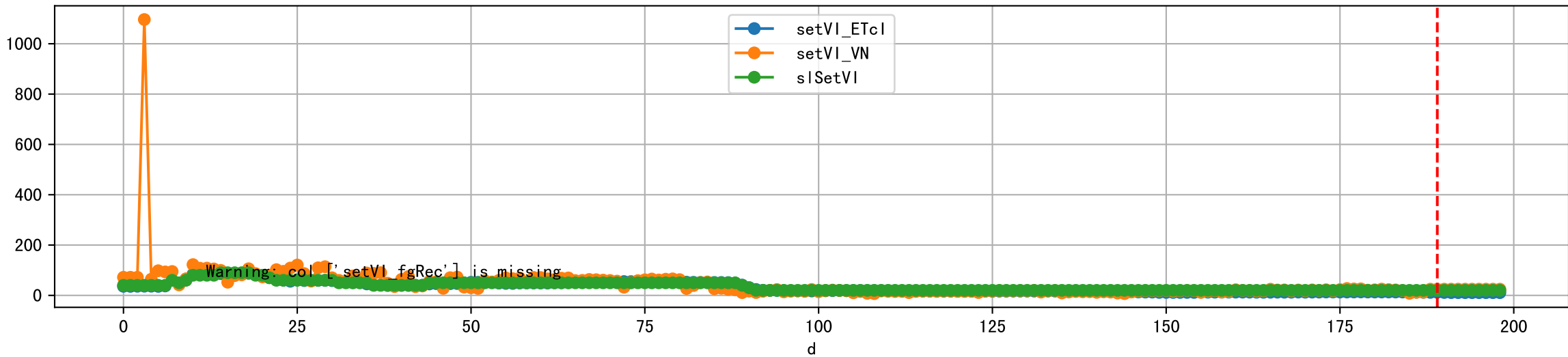




Plot [['taoc', 'taoc_raw:ro', 'taoc_avg:r-']]

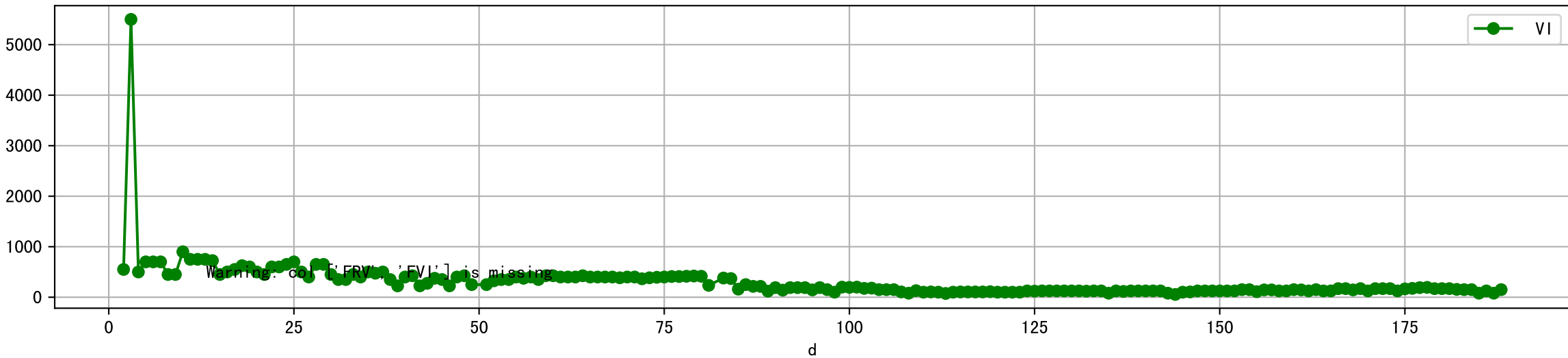


Plot [['setVI_ETcI', 'setVI_fgRec', 'setVI_VN', 'sISetVI']]

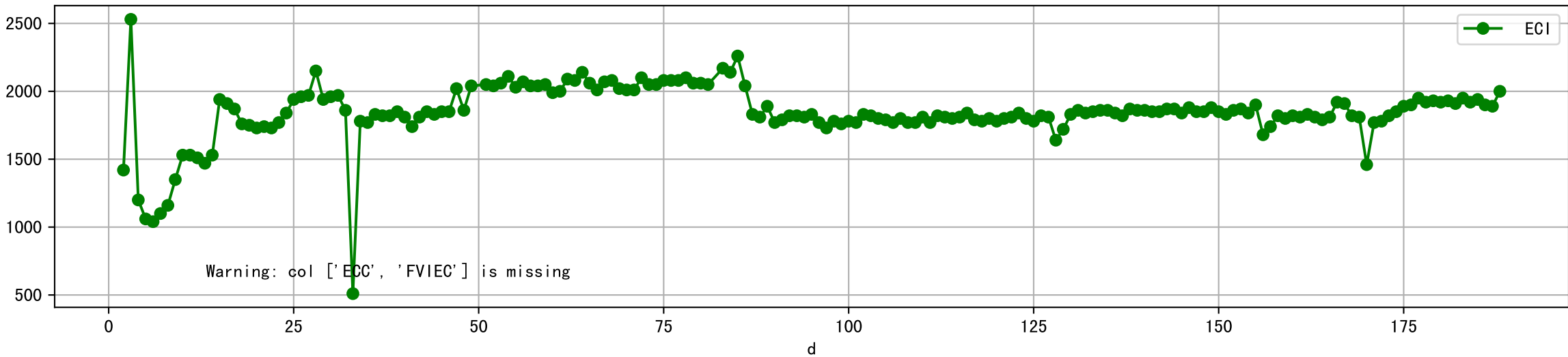




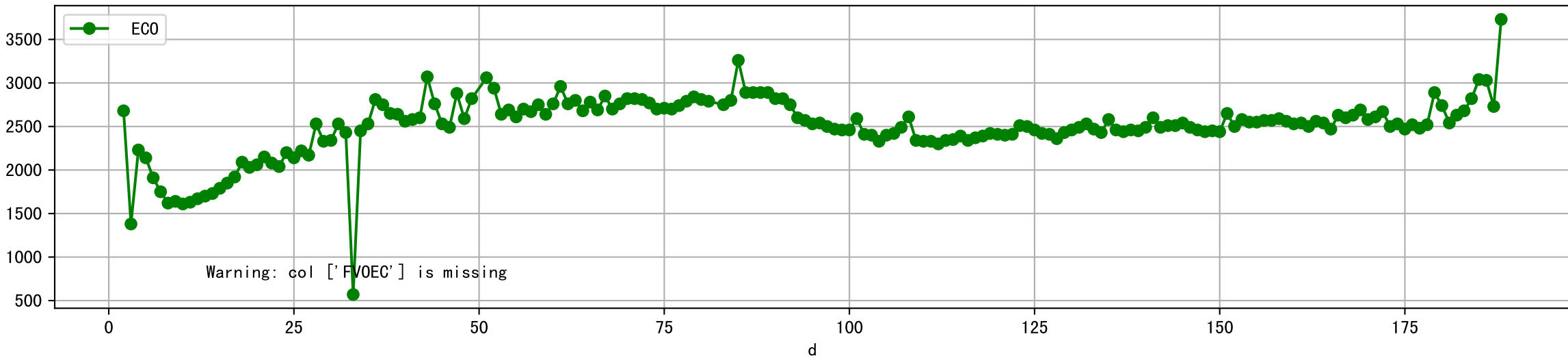
Plot [['FRV:b-o', 'FVI:r-o', 'VI:g-o']]



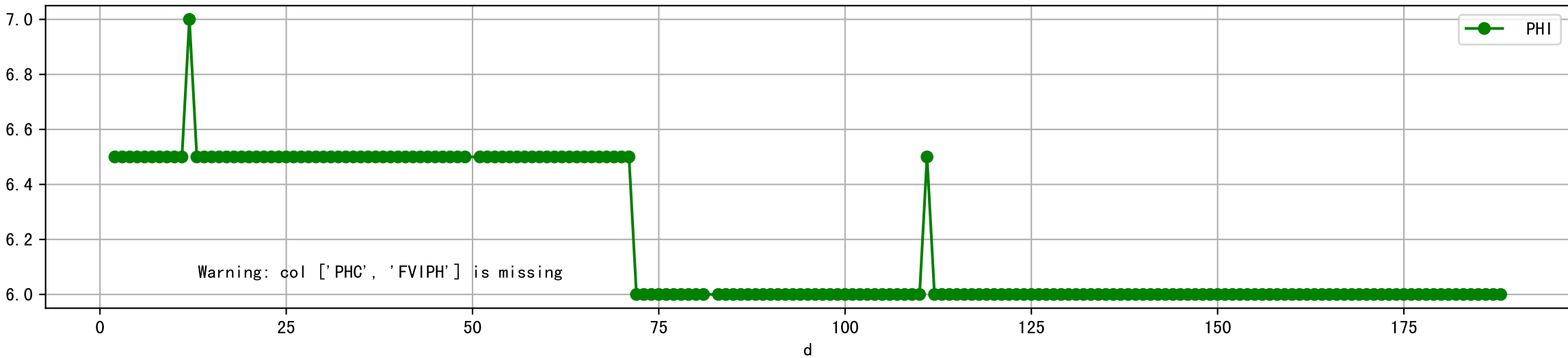
Plot [['ECC:b-o', 'FVIEC:r-o', 'ECI:g-o']]



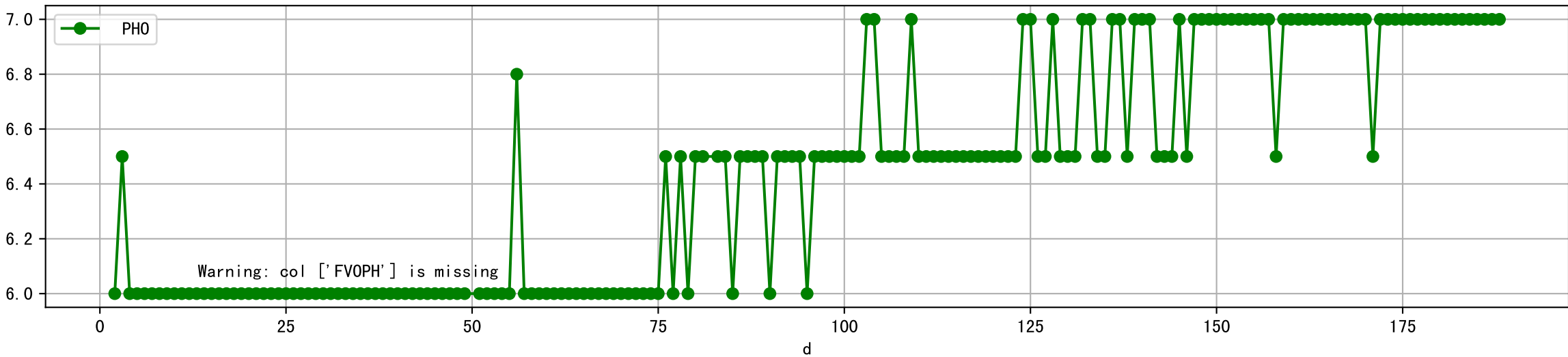
Plot [[' FV0EC:r-o', ' ECO:g-o']]



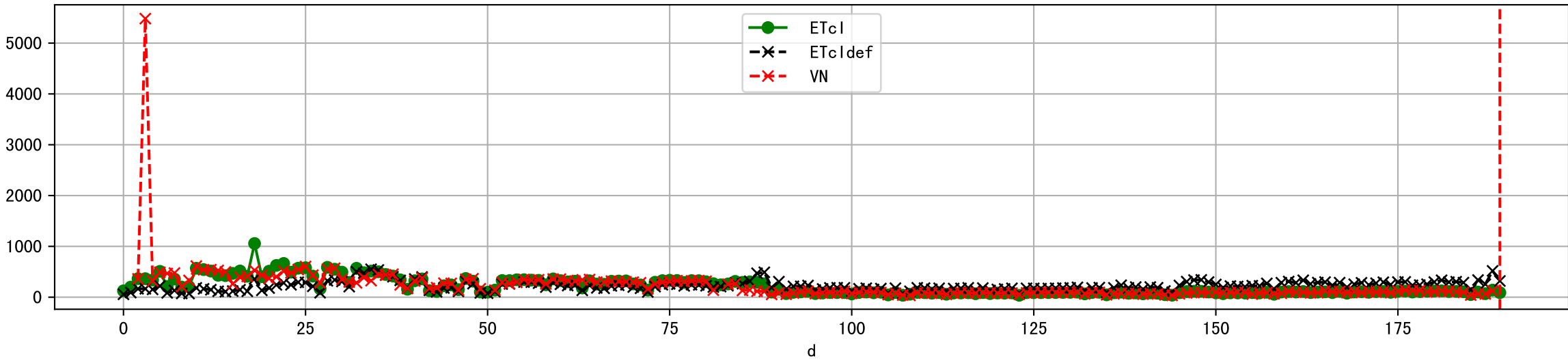
Plot [['PHC:b-o', 'FVIPH:r-o', 'PHI:g-o']]



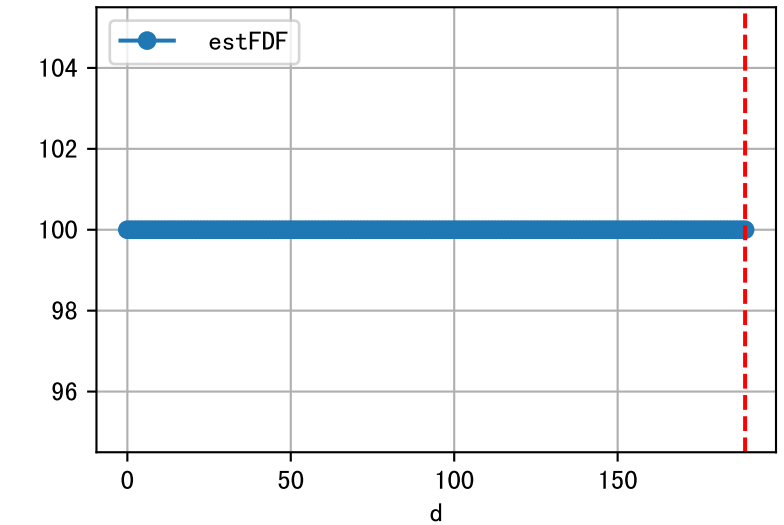
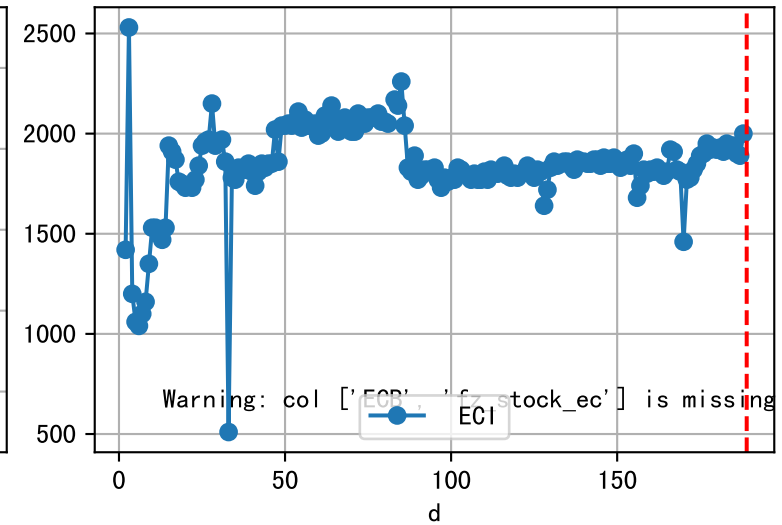
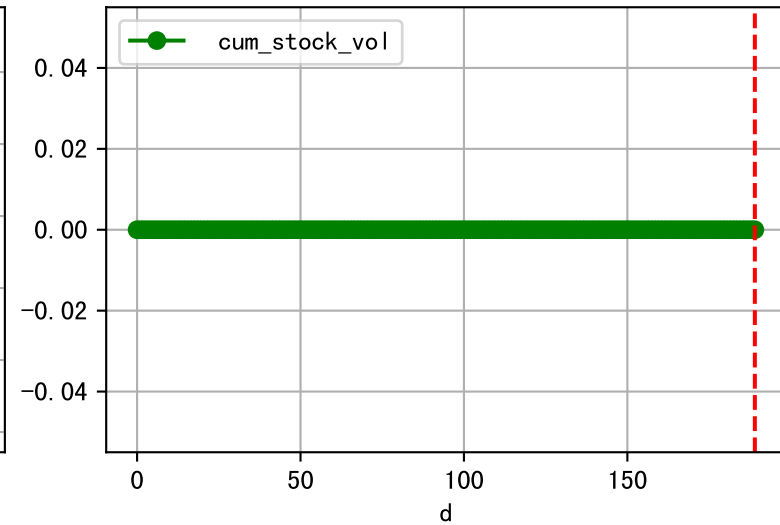
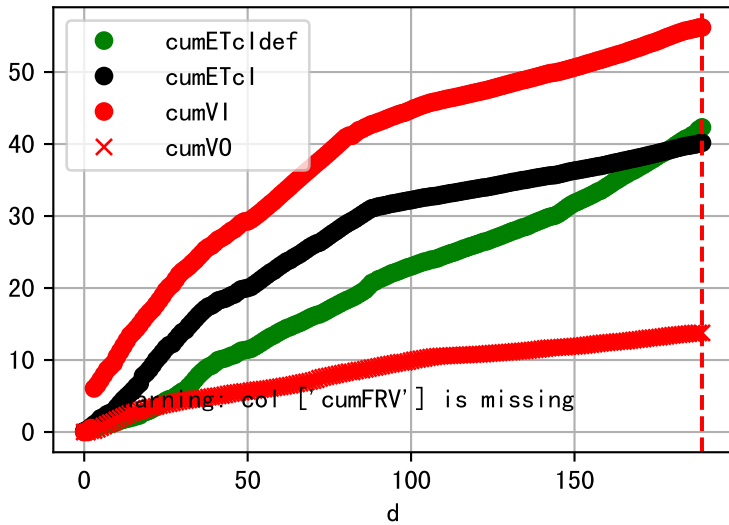
Plot [[' FVOPH:r-o' , ' PHO:g-o']]



Plot ET/VN



Plot Fv and fertilizer usage

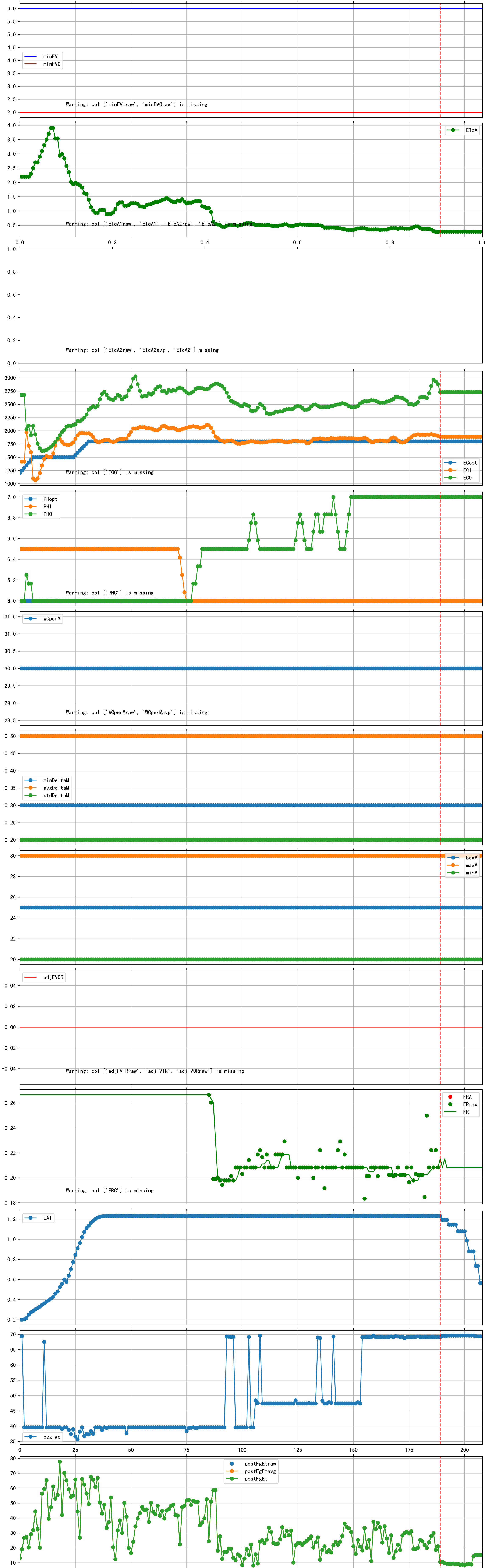


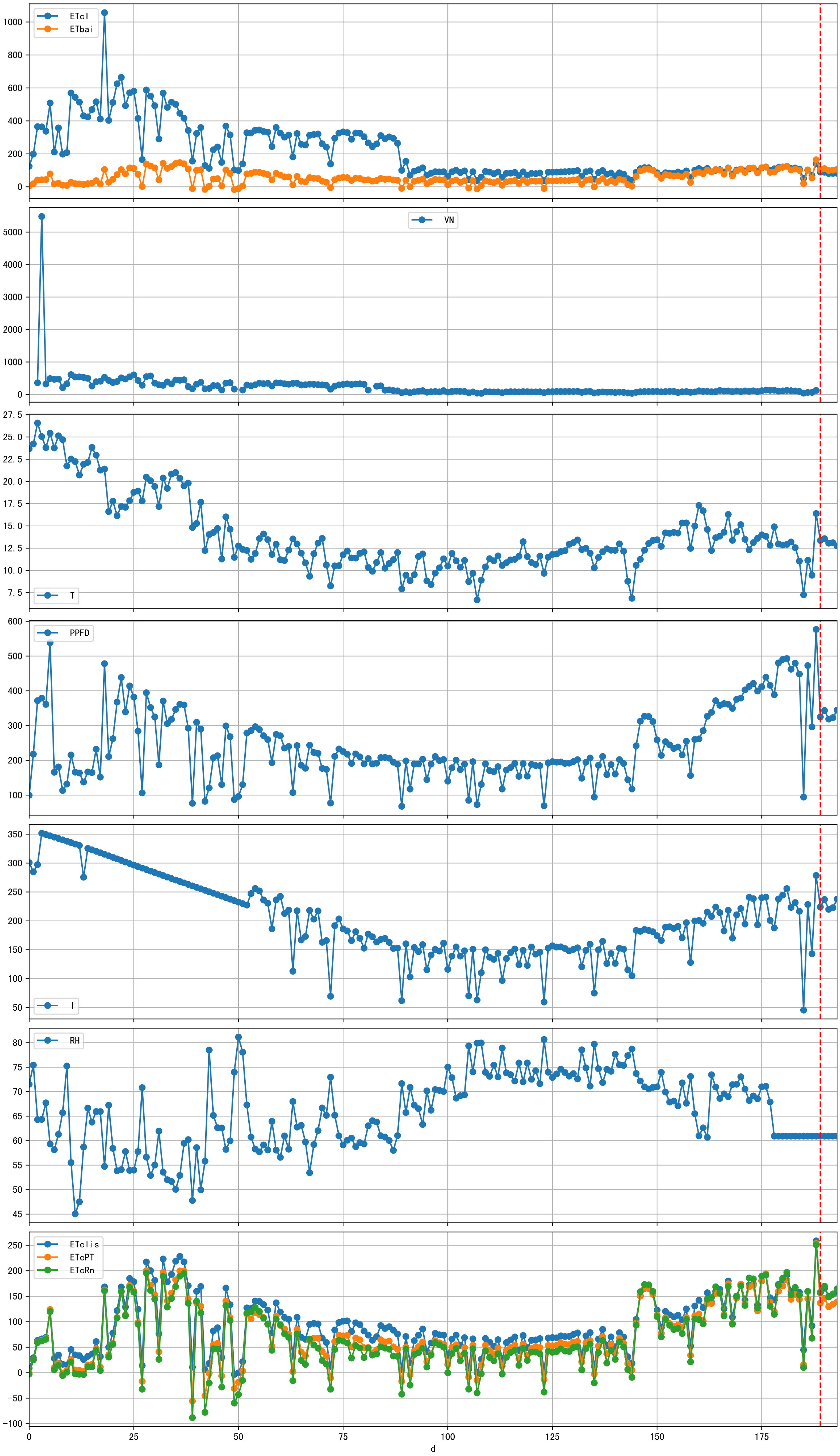


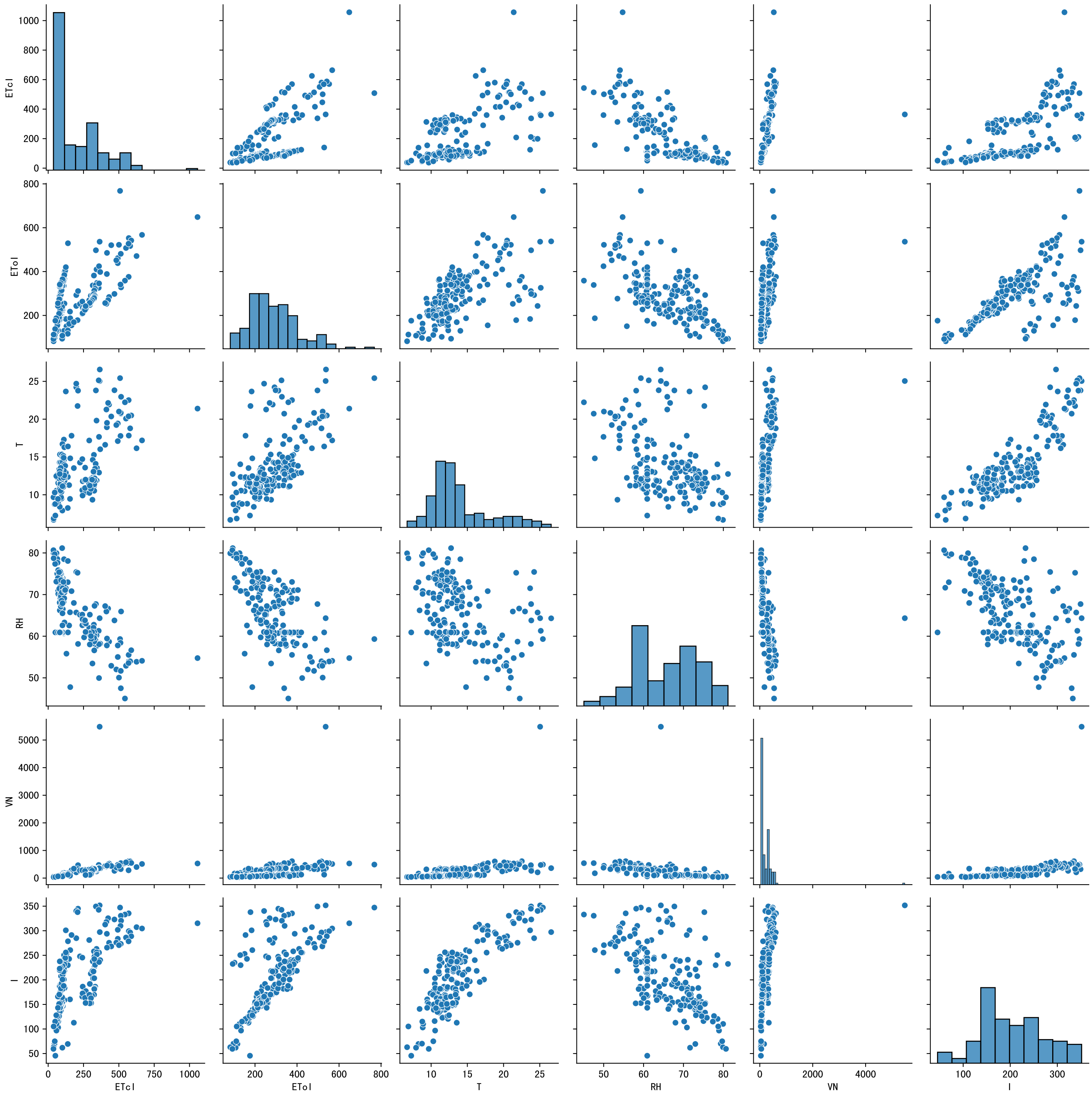
Fertilizer Range Source: kerleyL, kerleyH, UnivFL, TNAI, Haifa

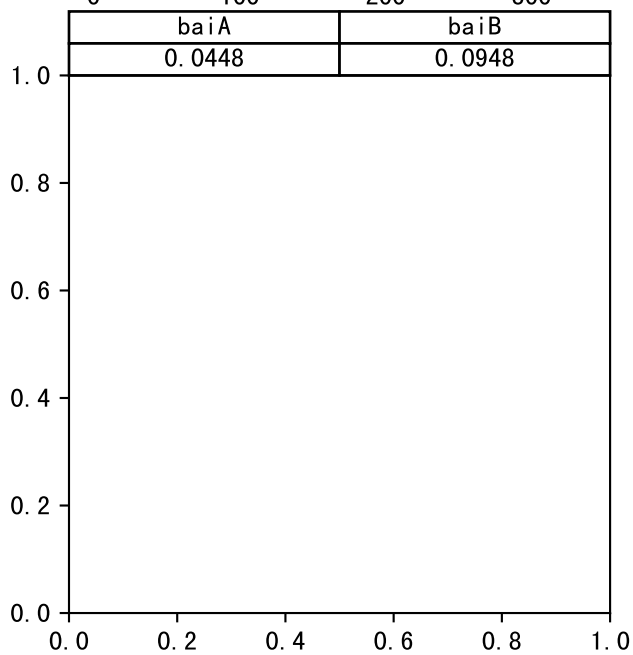
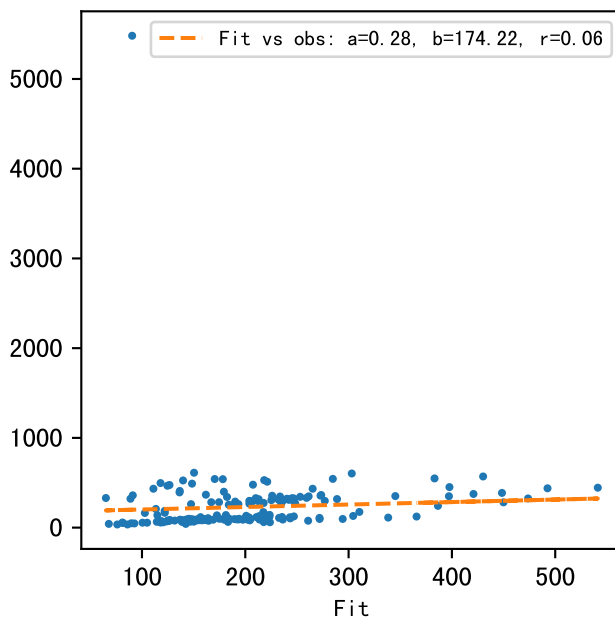
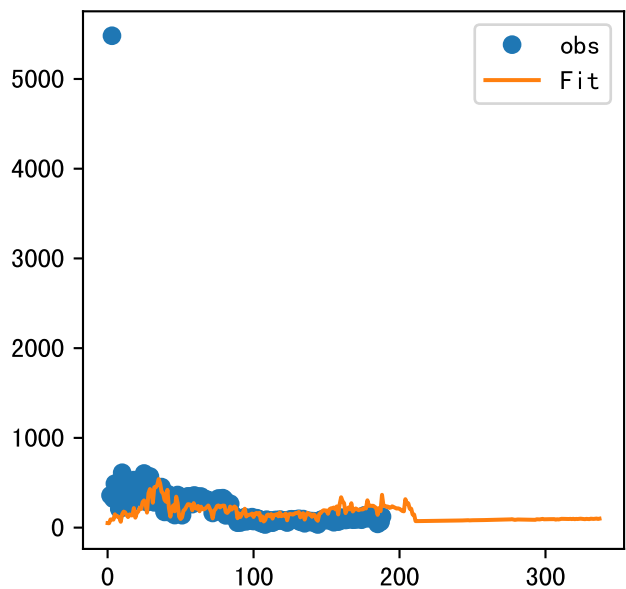


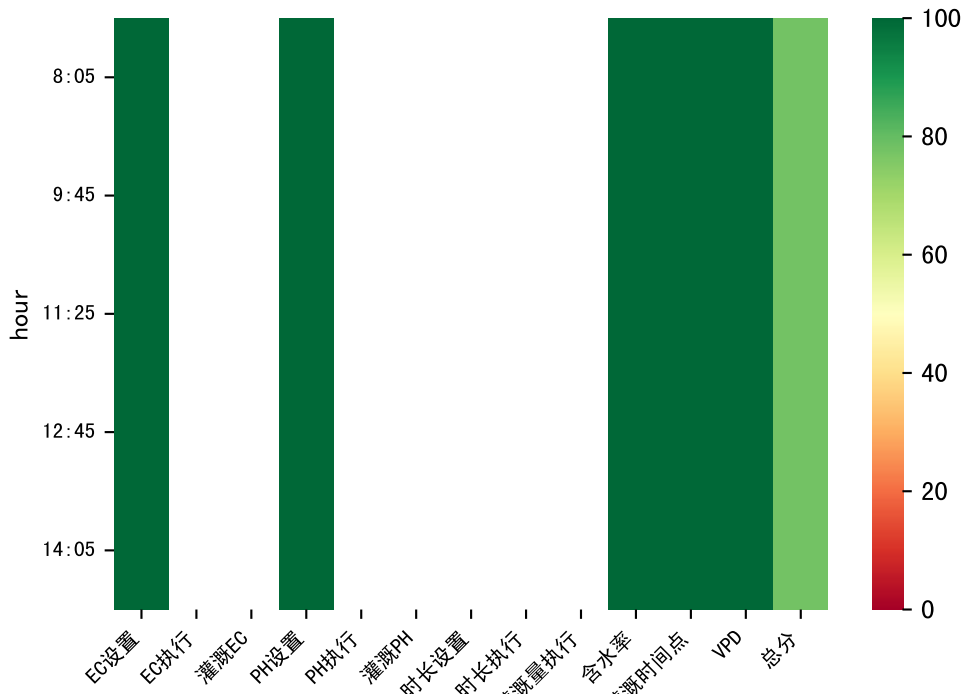
Trend plot for P2-8_0



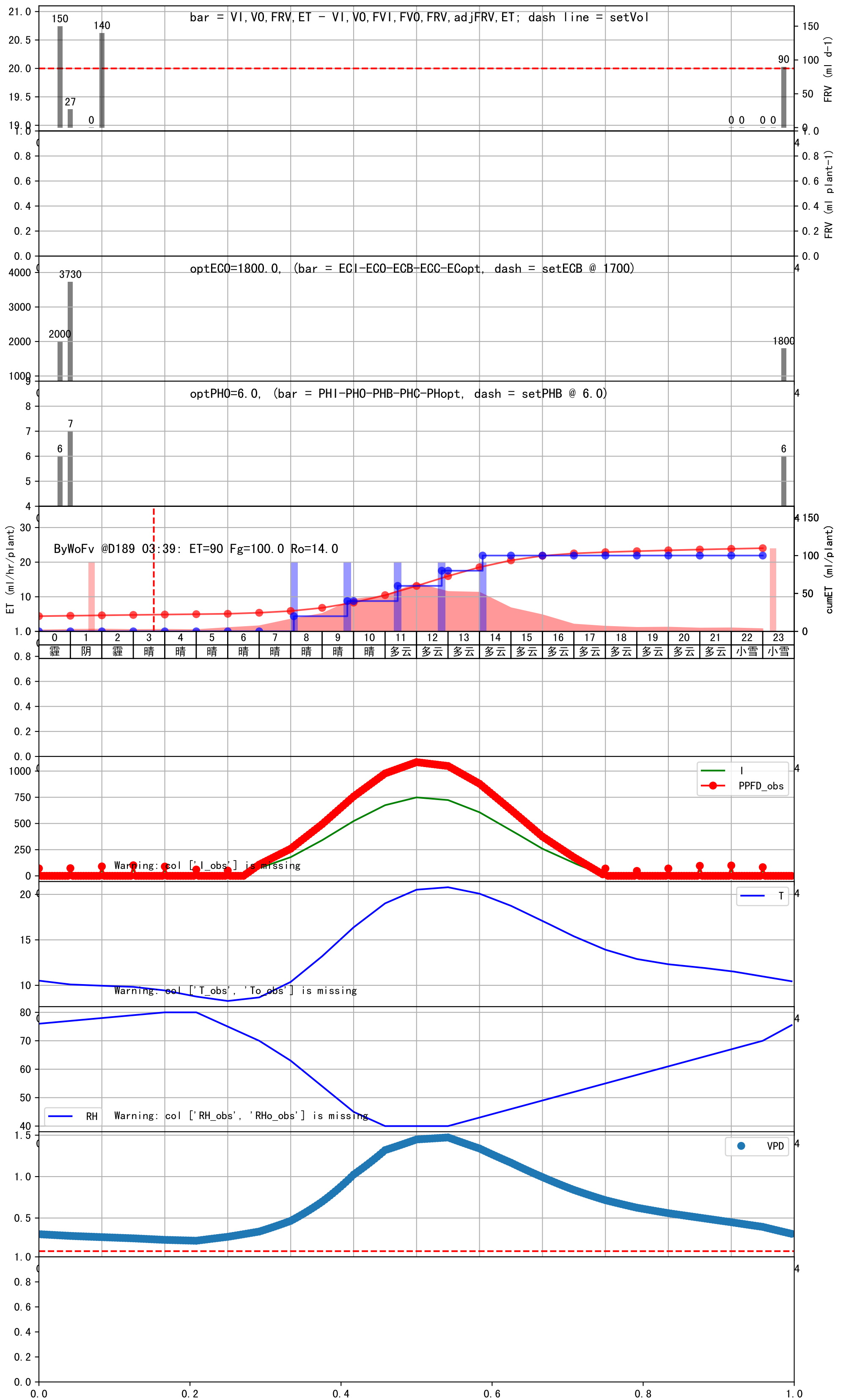


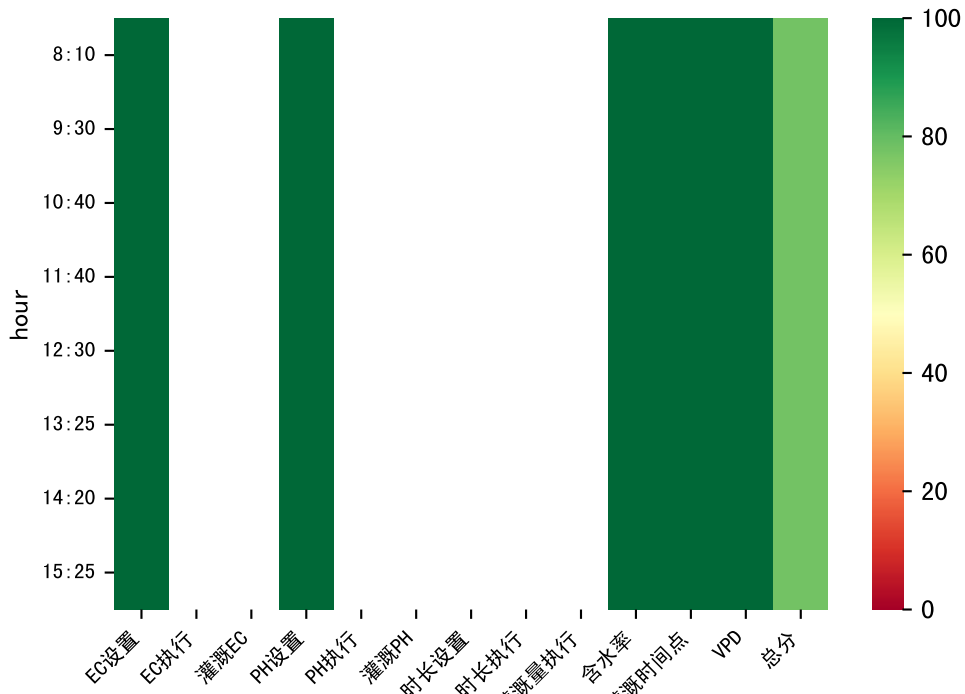




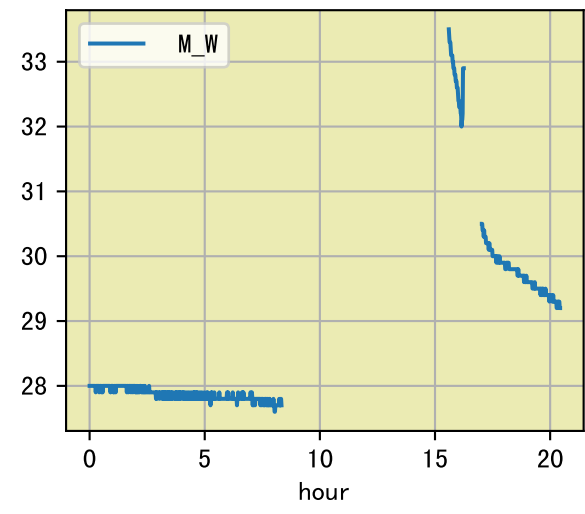
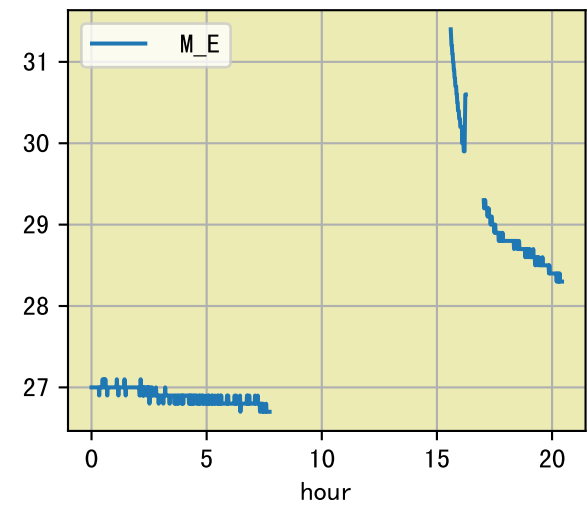


时间	灌溉时长(秒)	灌溉量(毫升/株)	灌溉总量(方/次)	天气	注释
08:05	91	20.0	0.227	晴	预期@08:05 手动 (未用传感器)
09:45	91	20.0	0.227	晴	预期@09:45 手动 (未用传感器)
11:25	91	20.0	0.227	多云	预期@11:25 手动 (未用传感器)
12:45	91	20.0	0.227	多云	预期@12:45 手动 (未用传感器)
14:05	91	20.0	0.227	多云	预期@14:05 手动 (未用传感器)
总计	455.0 (5次)	100.0			建议进液EC: 1700, PH: 6.0

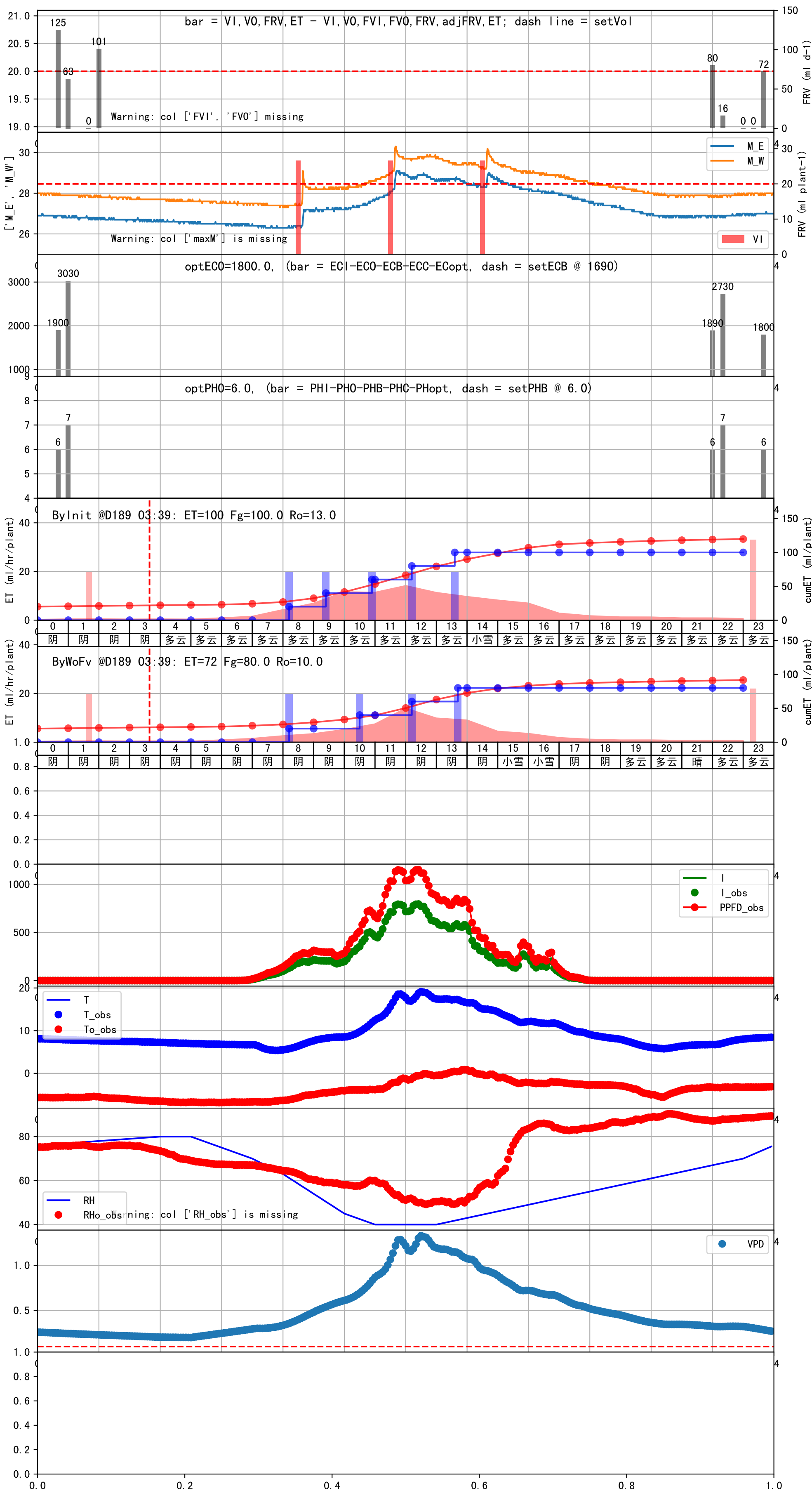


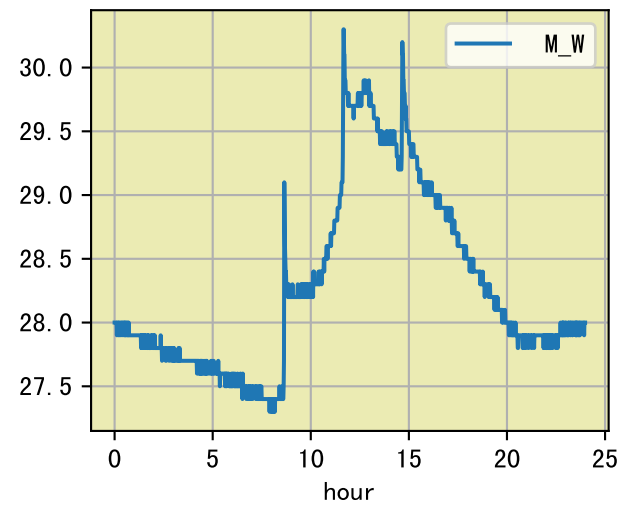
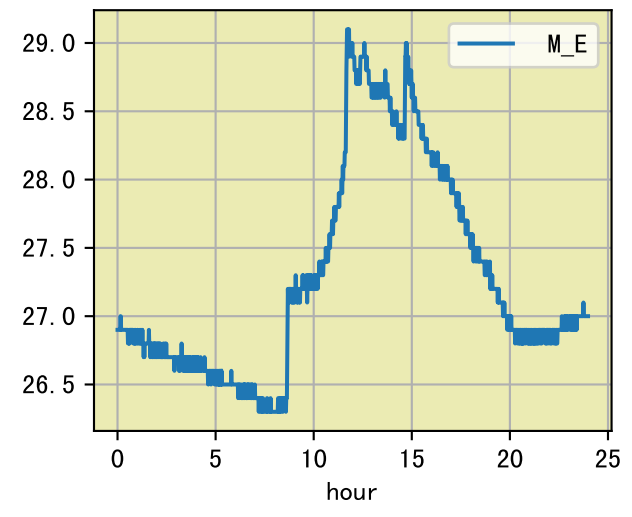


时间	灌溉时长(秒)	灌溉量(毫升/株)	灌溉总量(方/次)	天气	注释
08:10	95	20.0	0.227	阴	假设@08:10 未知程序 (未用传感器)
09:30	95	20.0	0.227	雾	假设@09:30 未知程序 (未用传感器)
10:40	95	20.0	0.227	雾	假设@10:40 未知程序 (未用传感器)
11:40	95	20.0	0.227	多云	假设@11:40 未知程序 (未用传感器)
12:30	95	20.0	0.227	多云	假设@12:30 未知程序 (未用传感器)
13:25	95	20.0	0.227	多云	假设@13:25 未知程序 (未用传感器)
14:20	95	20.0	0.227	多云	假设@14:20 未知程序 (未用传感器)
15:25	95	20.0	0.227	多云	假设@15:25 未知程序 (未用传感器)
总计	760.0 (8次)	160.0			建议进液EC: 1610, PH: 6.0

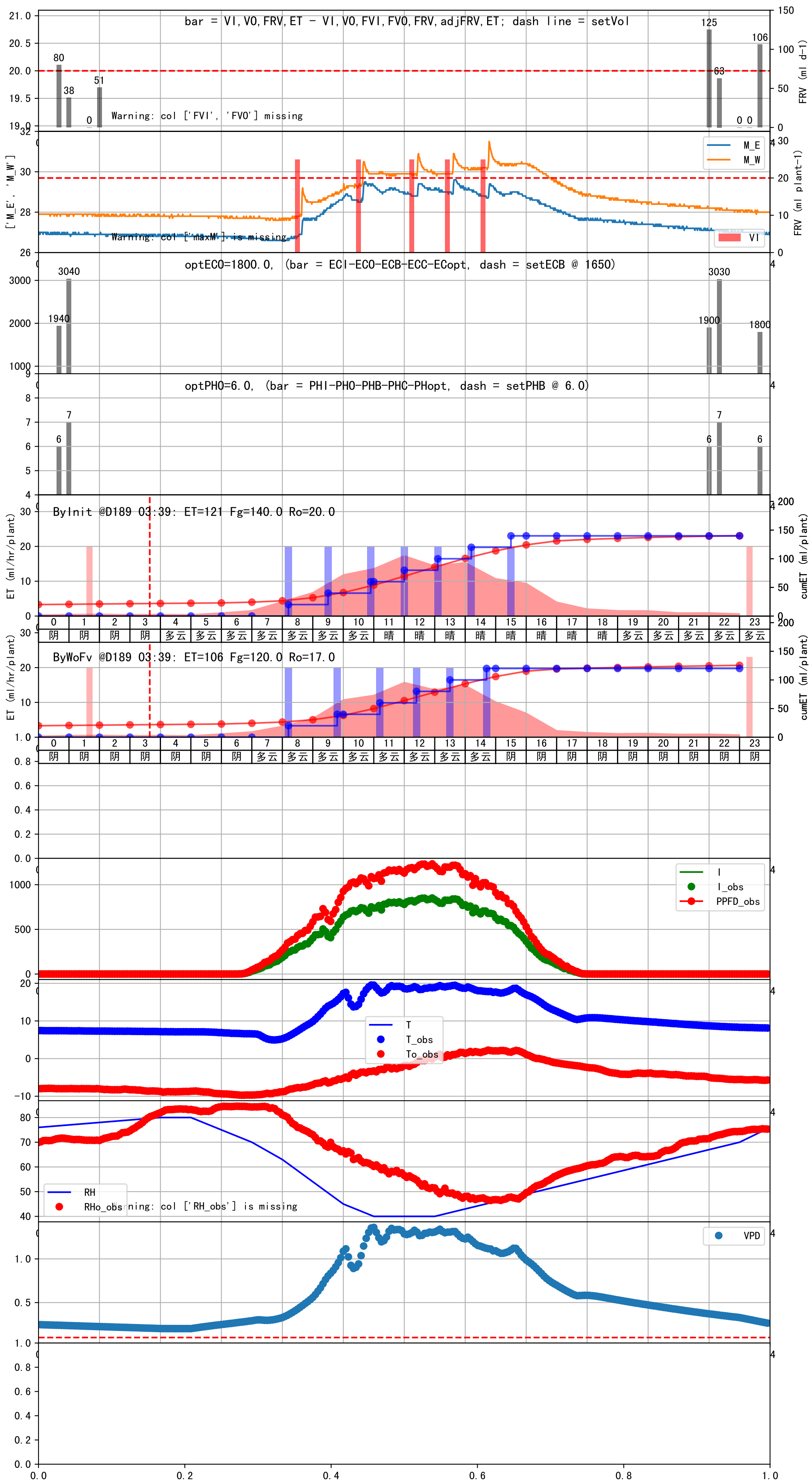


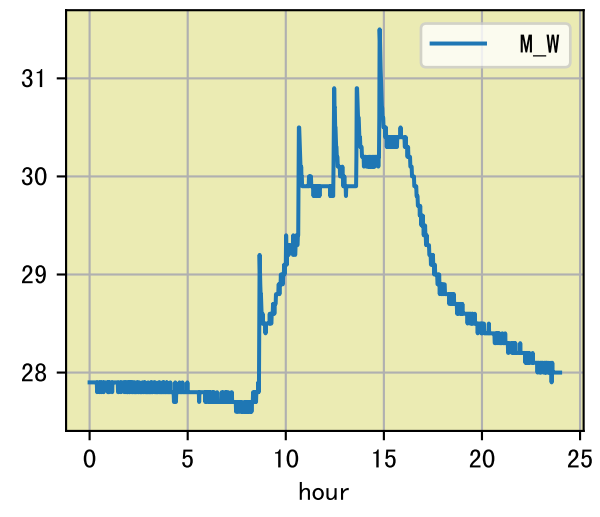
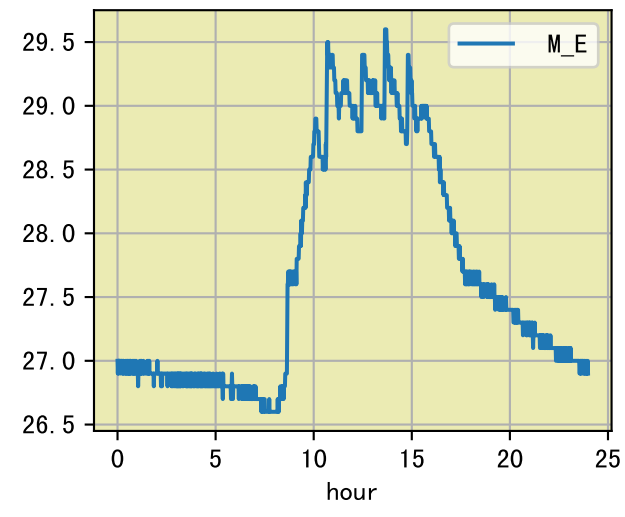
时间	灌溉时长(秒)	灌溉量(毫升/株)	灌溉总量(方/次)	天气	注释
08:10	95	20.0	0.227	阴	假设@08:10 未知程序 (未用传感器)
10:30	95	20.0	0.227	阴	假设@10:30 未知程序 (未用传感器)
12:10	95	20.0	0.227	阴	假设@12:10 未知程序 (未用传感器)
13:40	95	20.0	0.227	阴	假设@13:40 未知程序 (未用传感器)
总计	380.0 (4次)	80.0			建议进液EC: 1690, PH: 6.0

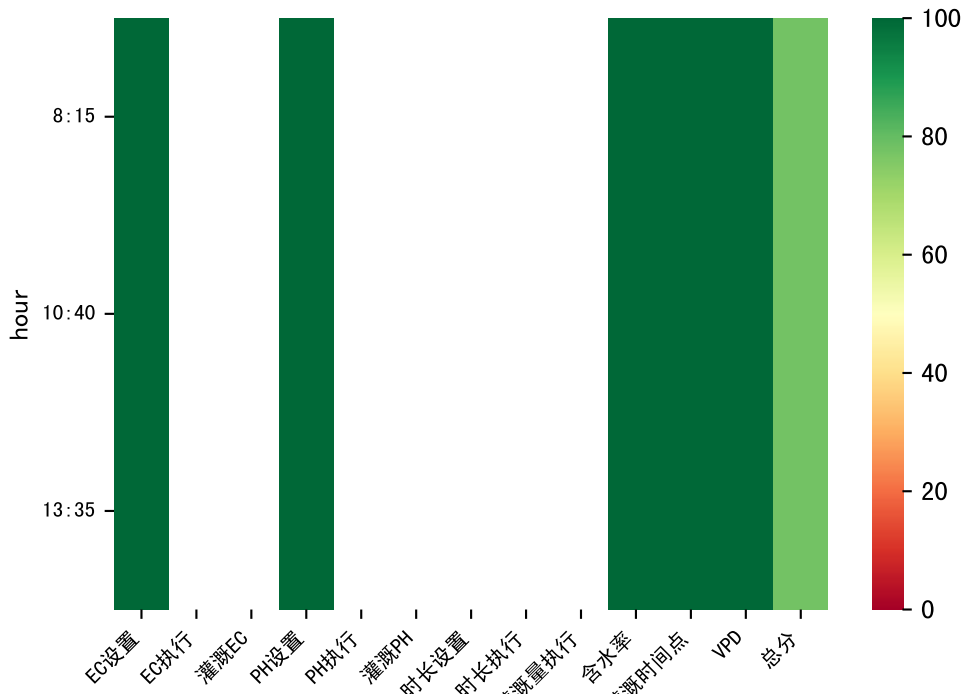




时间	灌溉时长(秒)	灌溉量(毫升/株)	灌溉总量(方/次)	天气	注释
08:10	95	20.0	0.227	多云	假设@08:10 未知程序 (未用传感器)
09:50	95	20.0	0.227	多云	假设@09:50 未知程序 (未用传感器)
11:15	95	20.0	0.227	多云	假设@11:15 未知程序 (未用传感器)
12:25	95	20.0	0.227	多云	假设@12:25 未知程序 (未用传感器)
13:30	95	20.0	0.227	多云	假设@13:30 未知程序 (未用传感器)
14:40	95	20.0	0.227	多云	假设@14:40 未知程序 (未用传感器)
总计	570.0 (6次)	120.0			建议进液EC: 1650, PH: 6.0







时间	灌溉时长(秒)	灌溉量(毫升/株)	灌溉总量(方/次)	天气	注释
08:15	100	20.0	0.227	阴	假设@08:15 未知程序(未用传感器)
10:40	100	20.0	0.227	阴	假设@10:40 未知程序(未用传感器)
13:35	100	20.0	0.227	阴	假设@13:35 未知程序(未用传感器)
总计	300.0 (3次)	60.0			建议进液EC: 1830, PH: 6.0

