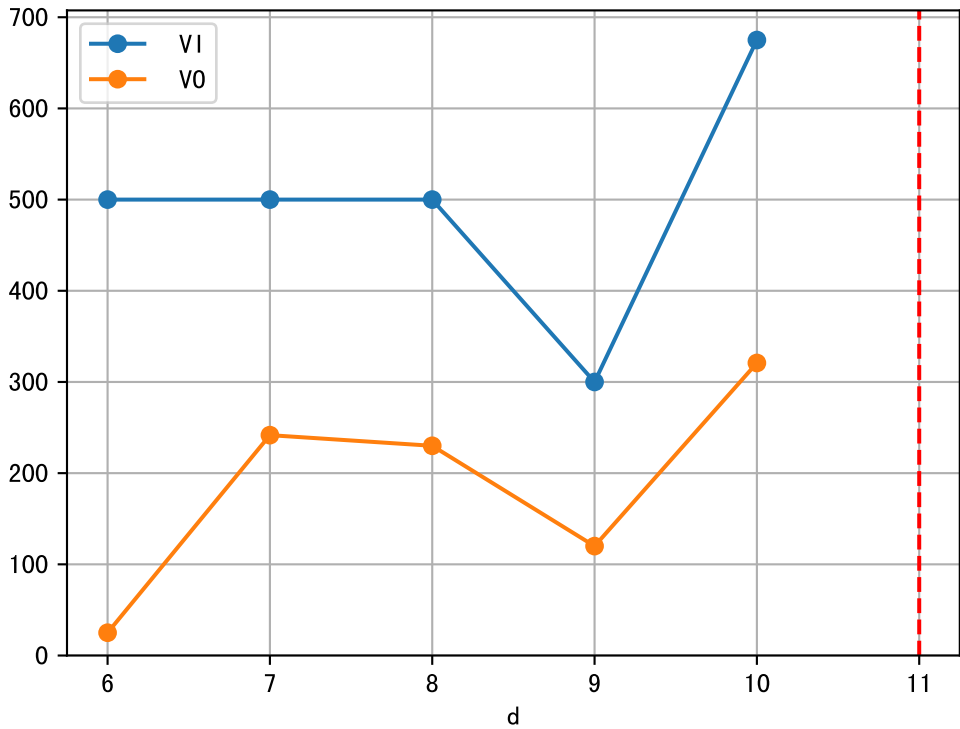
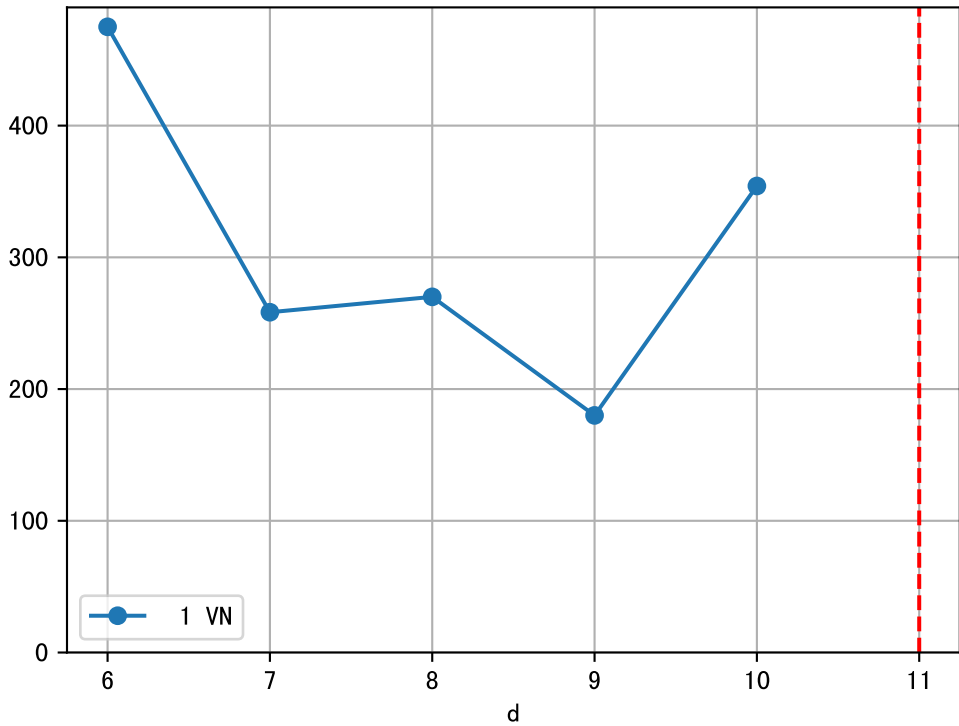
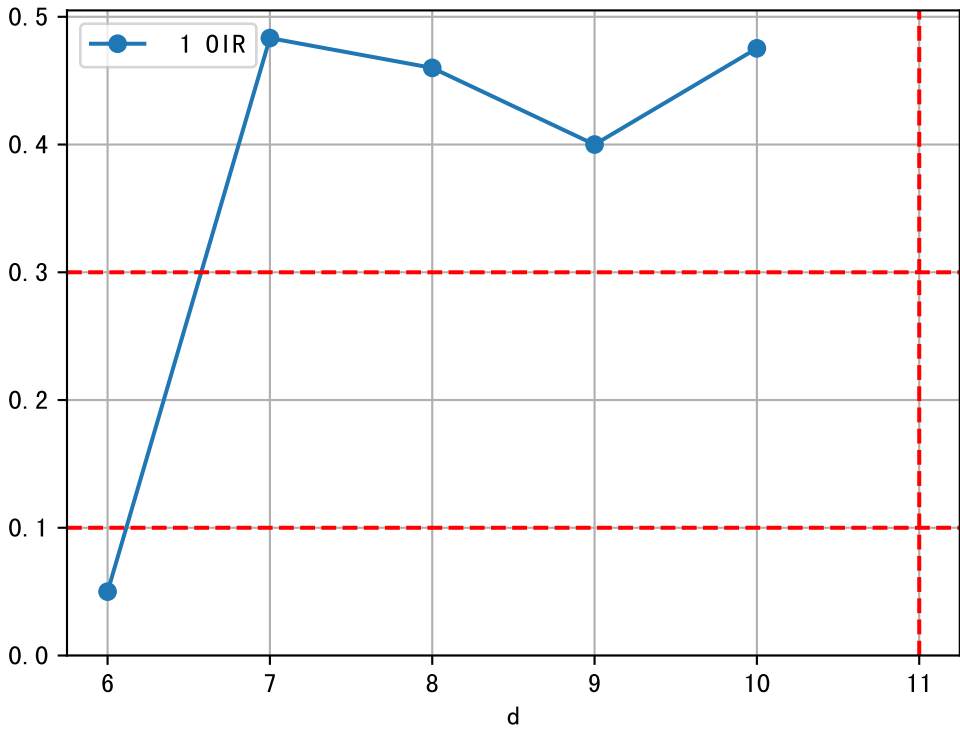


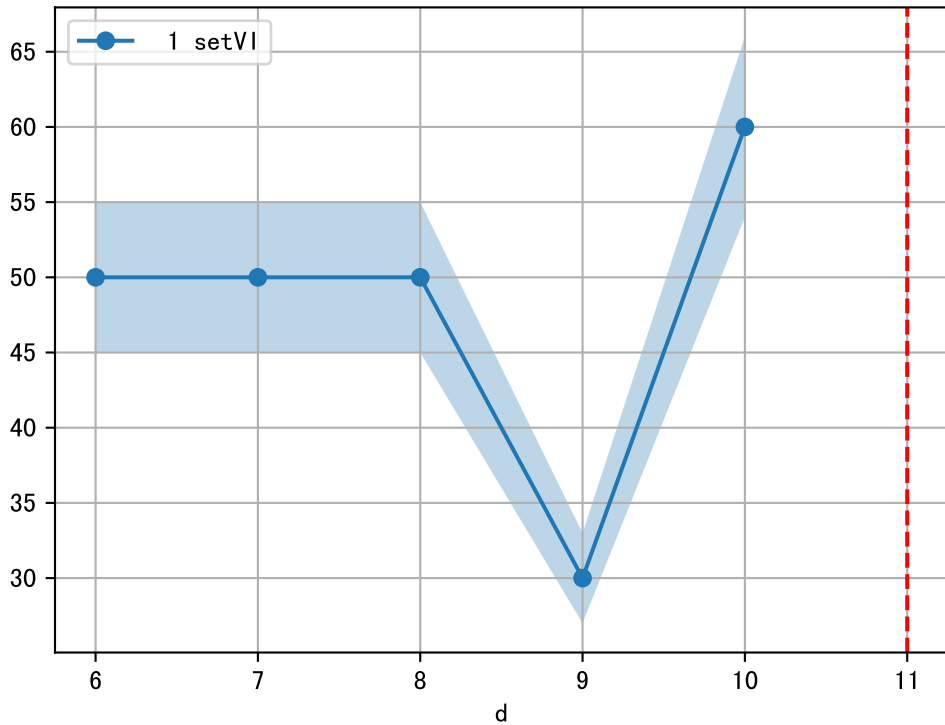
FgArea: [' 0']
NC11 P2-9
2025-09-07 (Day 11)



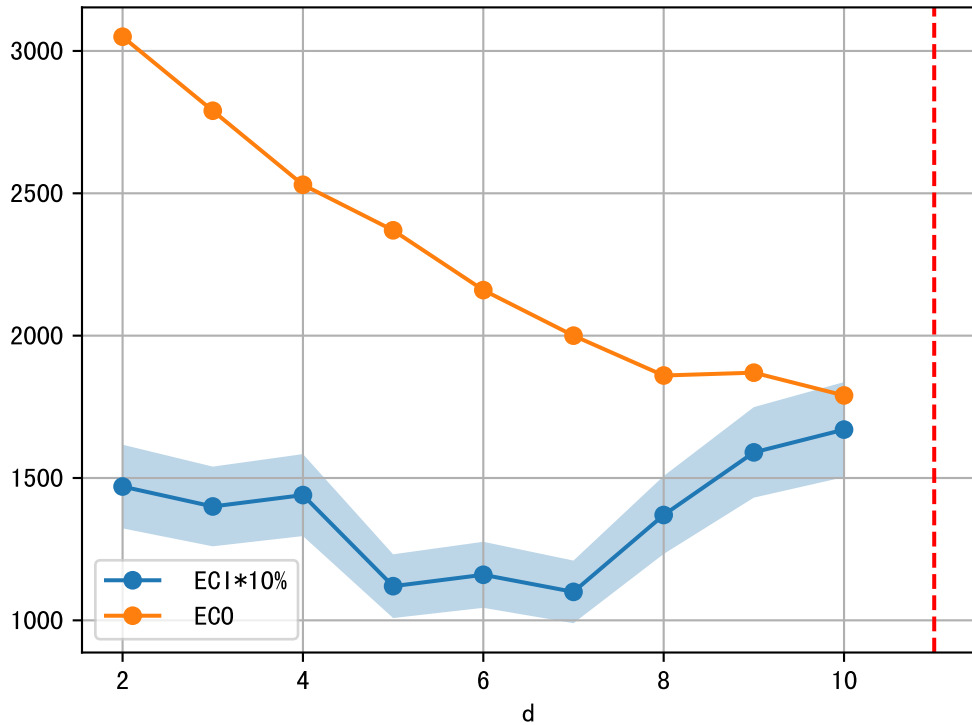


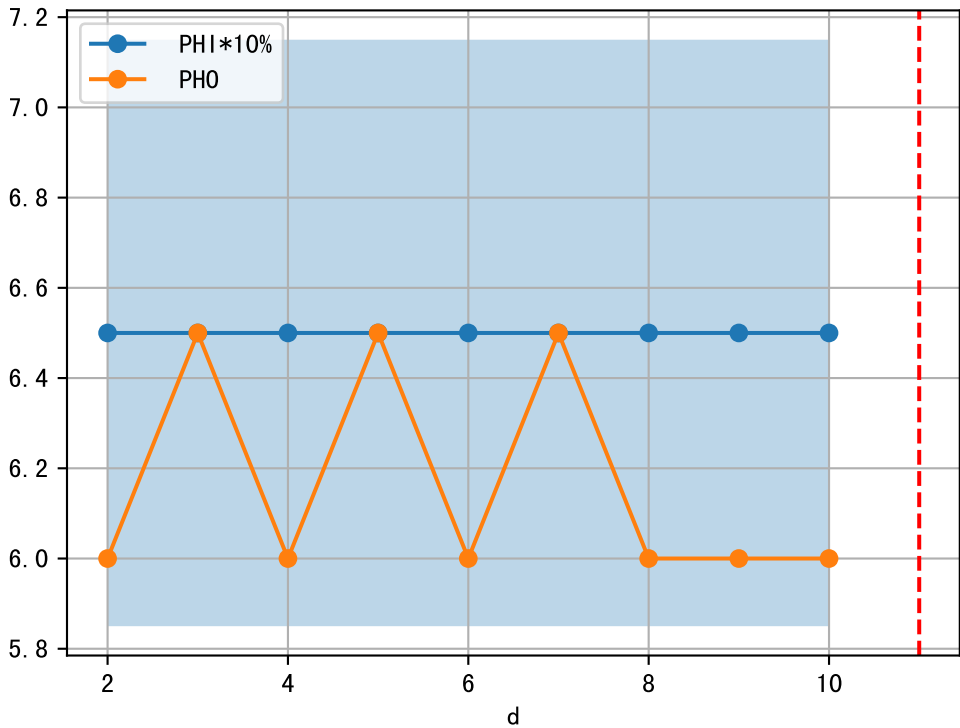




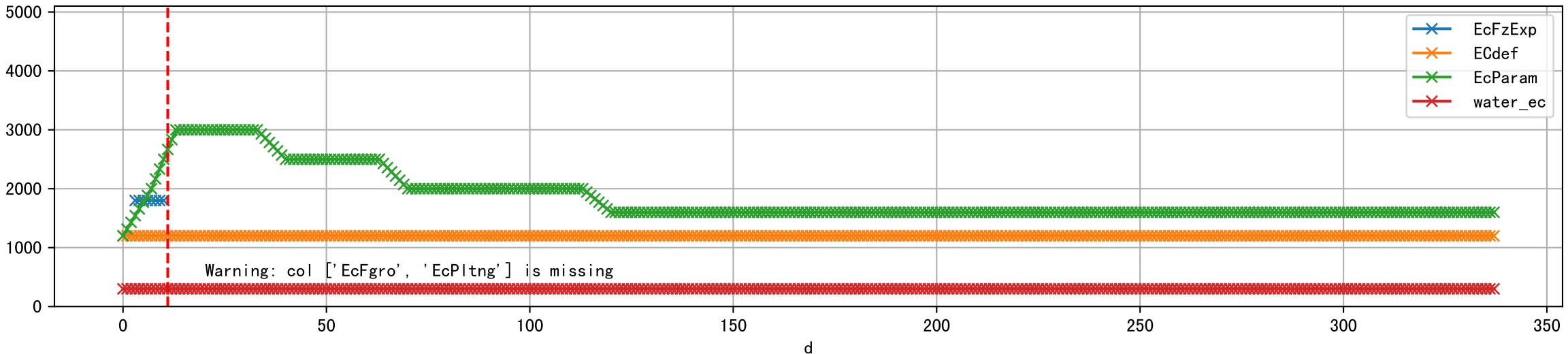


1 (fgArea = NA)

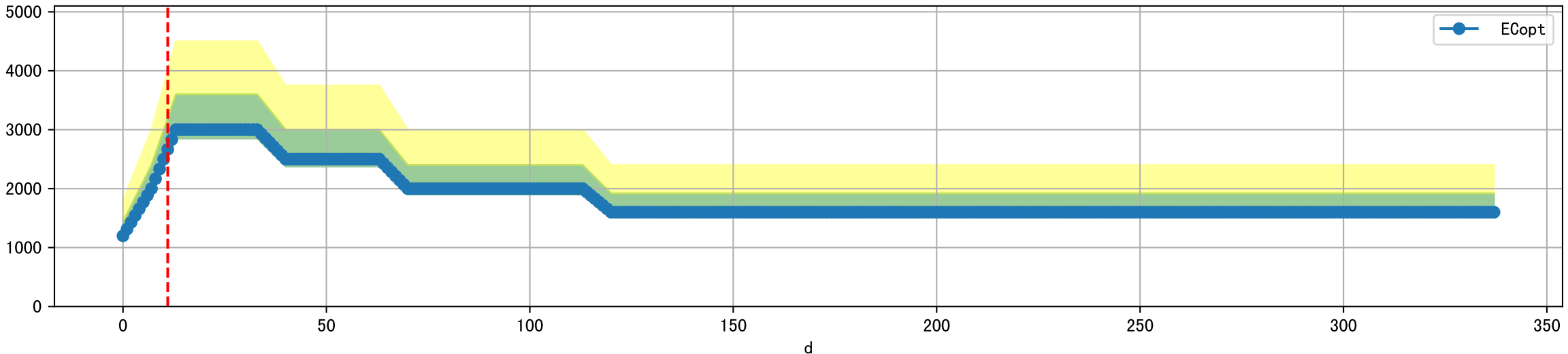


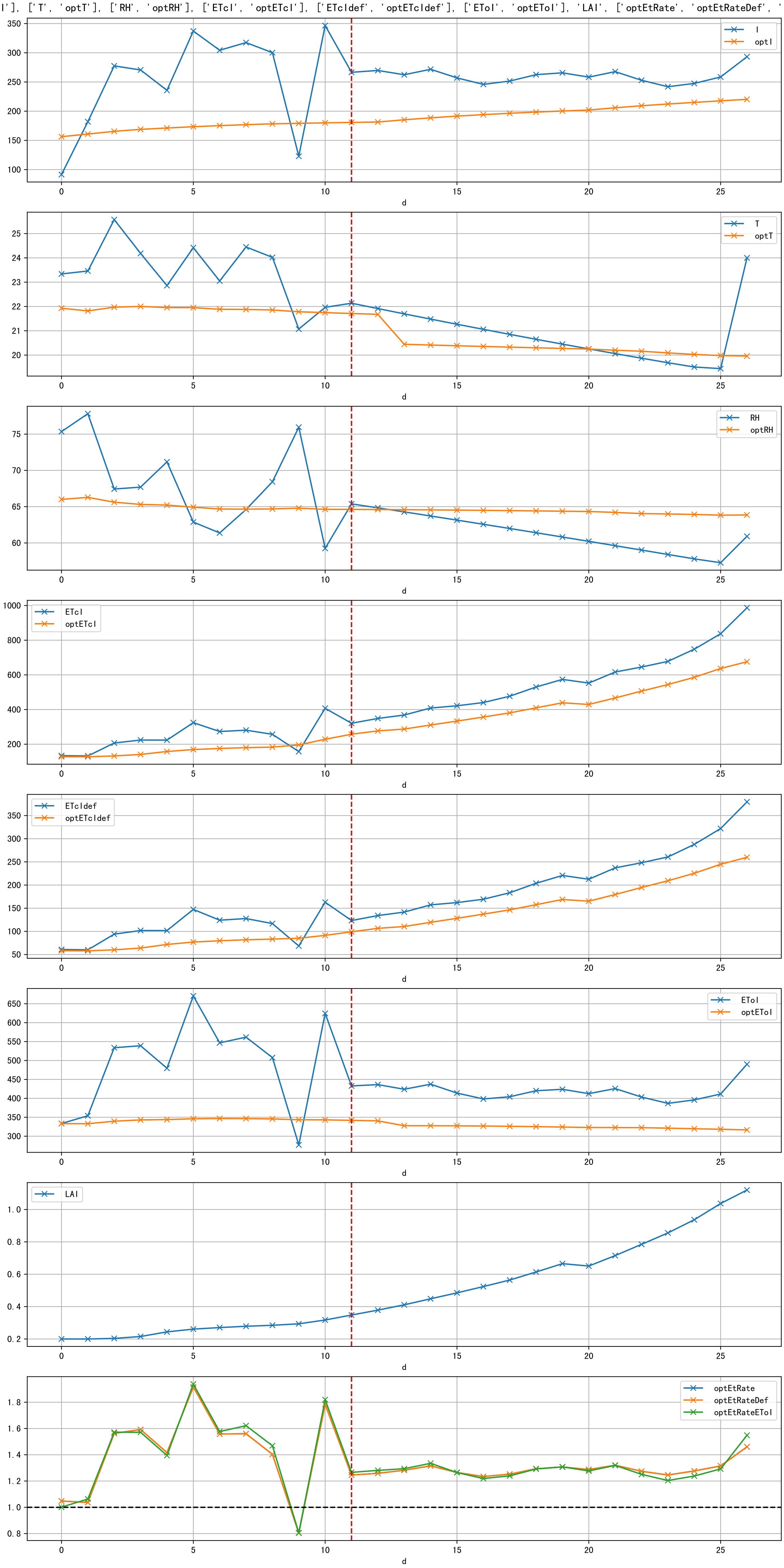


Plot [['EcFgro', 'EcFzExp', 'EcPltng', 'ECdef', 'EcParam', 'water_ec']]

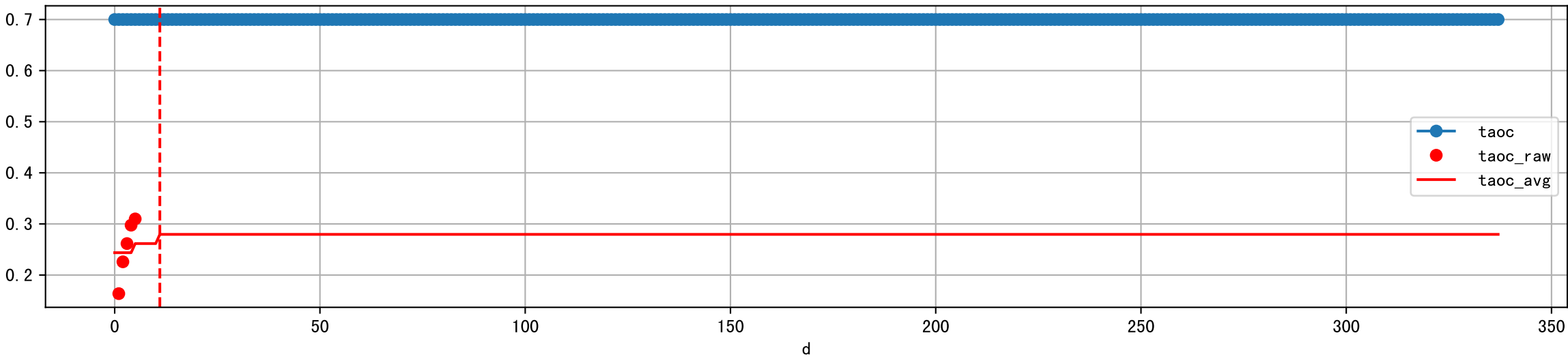


Plot [' ECopt ']

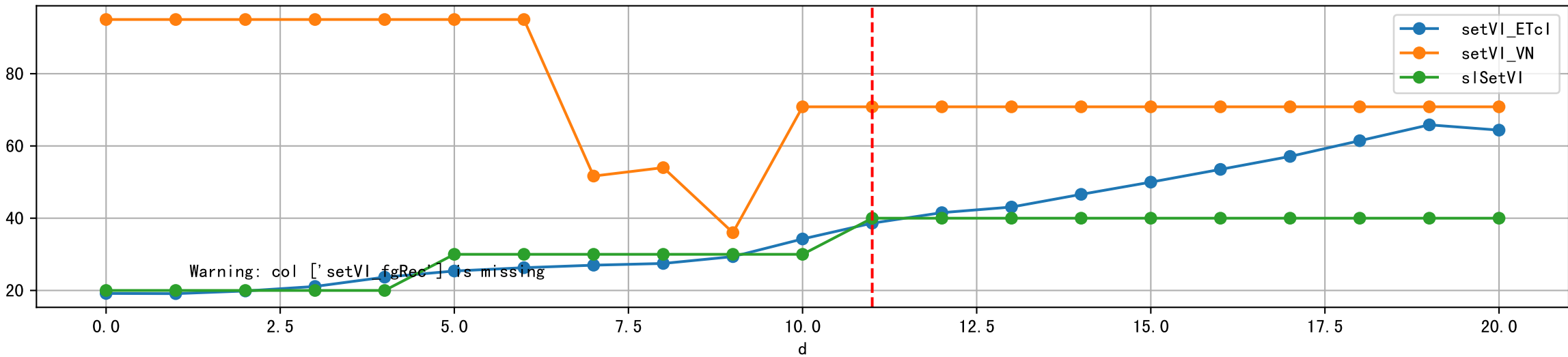




Plot [['taoc', 'taoc_raw:ro', 'taoc_avg:r-']]

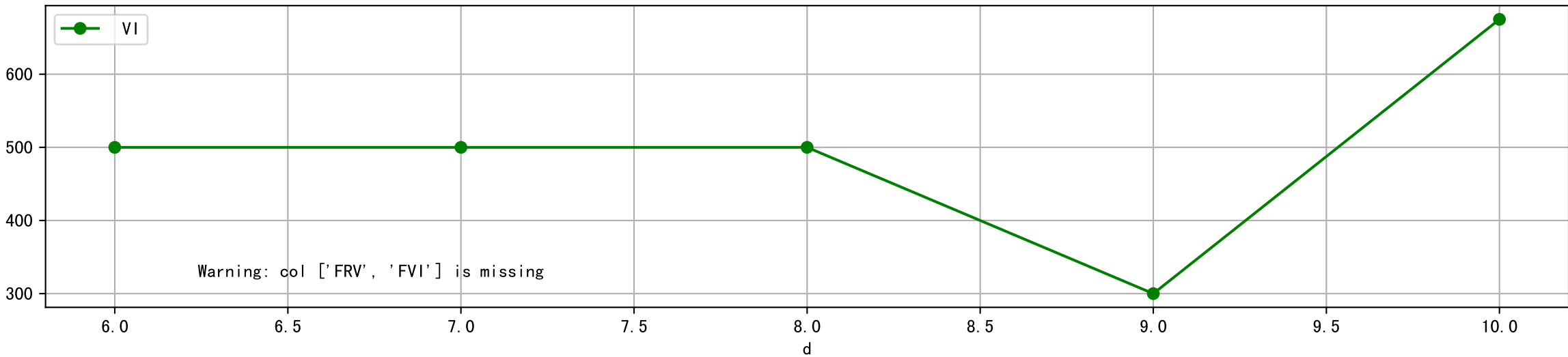


Plot [['setVI_ETcI', 'setVI_fgRec', 'setVI_VN', 'sISetVI']]

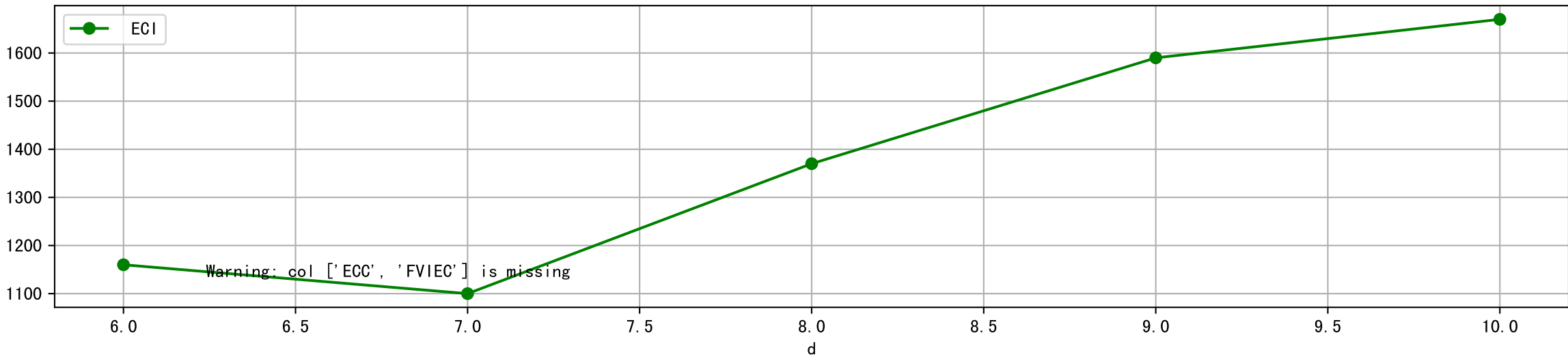




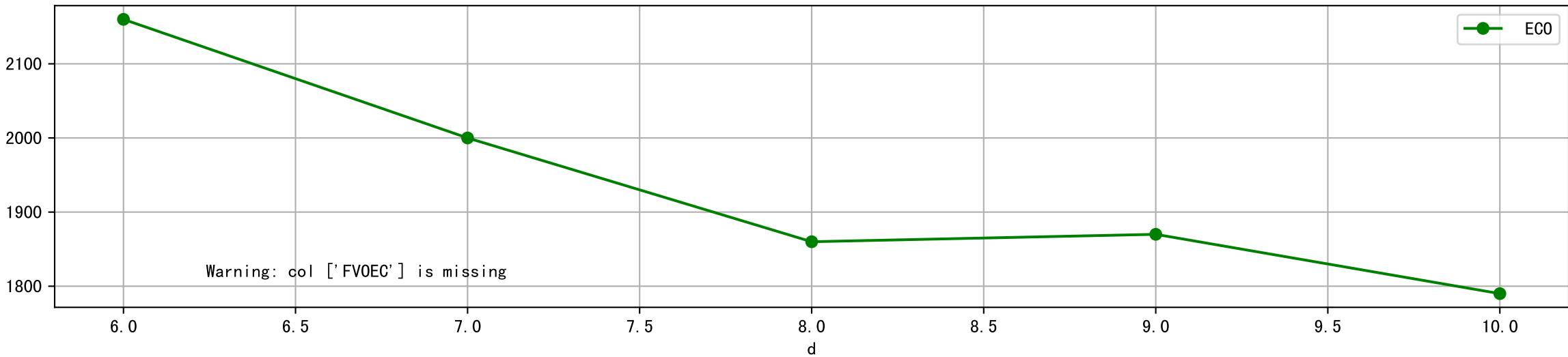
Plot [['FRV:b-o', 'FVI:r-o', 'VI:g-o']]



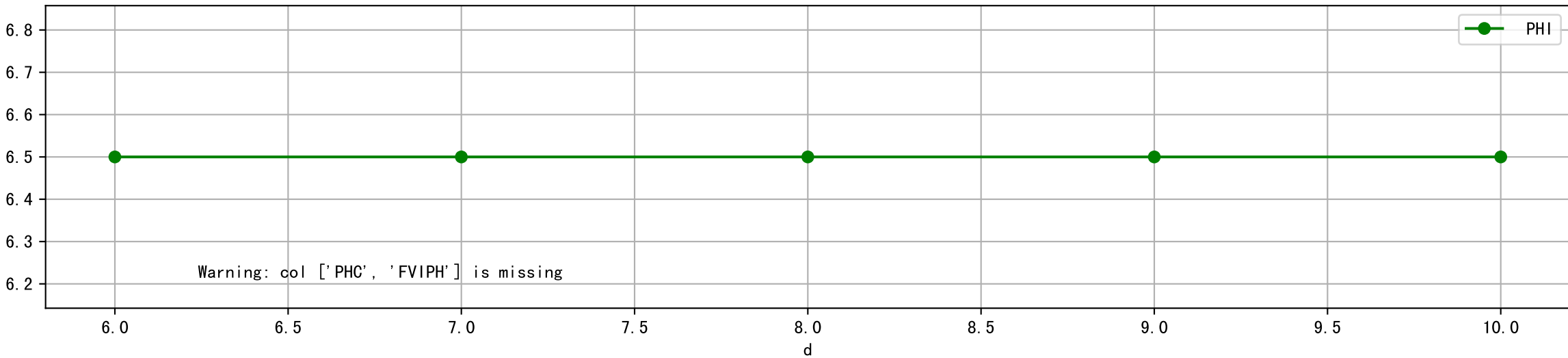
Plot [['ECC:b-o', 'FVIEC:r-o', 'ECI:g-o']]



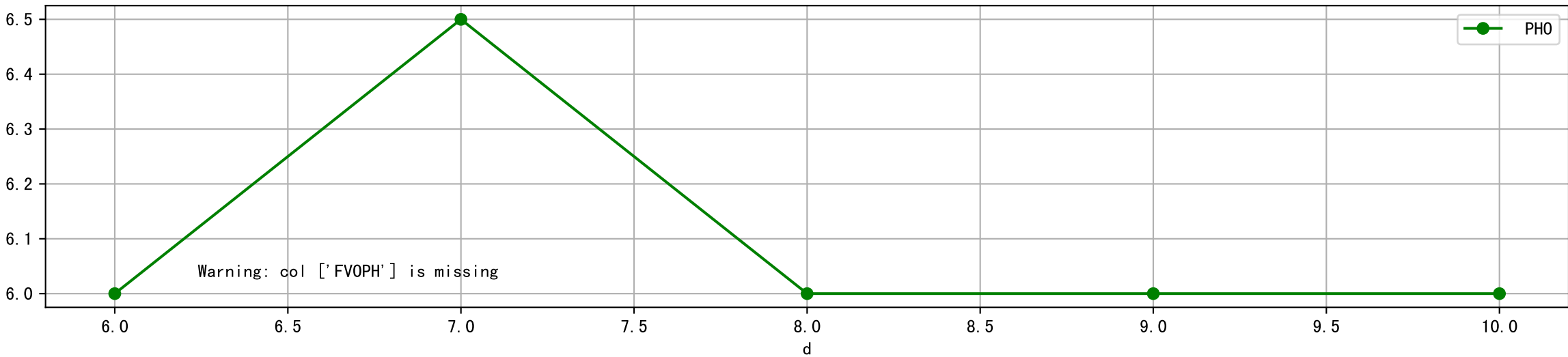
Plot [[' FVOEC:r-o', ' ECO:g-o']]



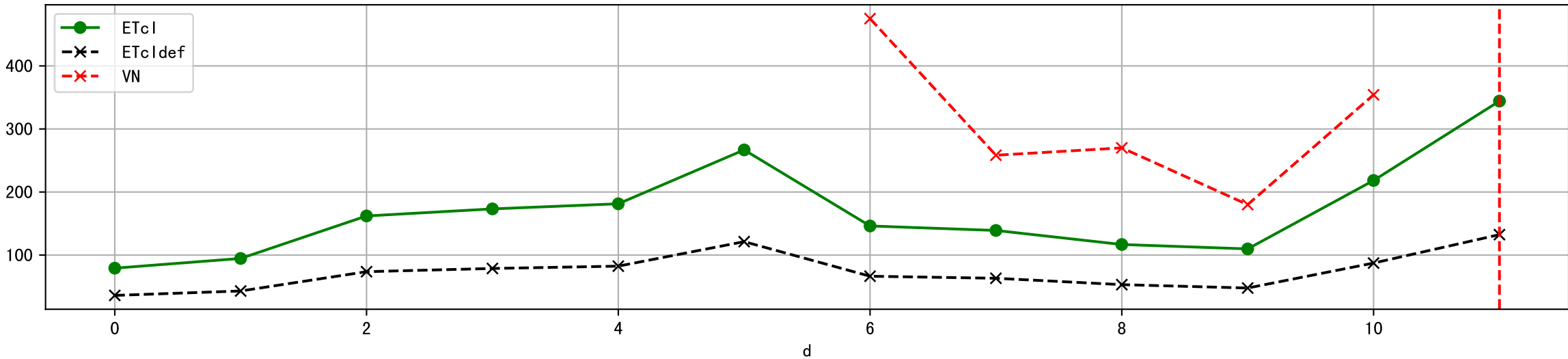
Plot [['PHC:b-o', 'FVIPH:r-o', 'PHI:g-o']]



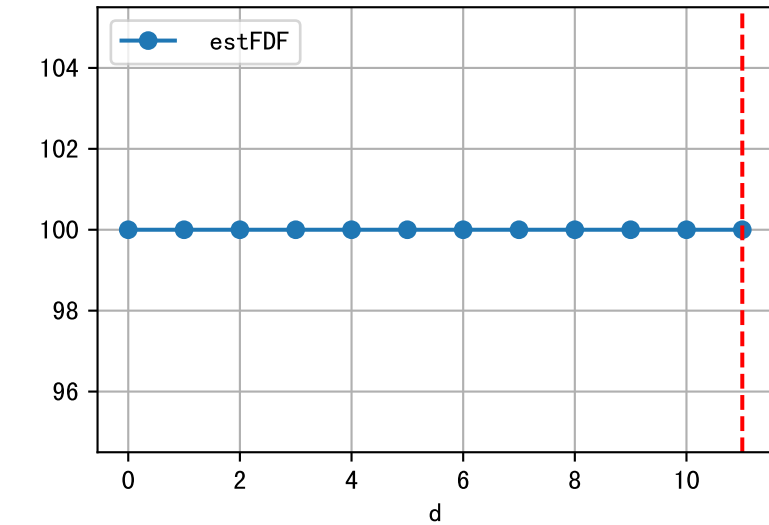
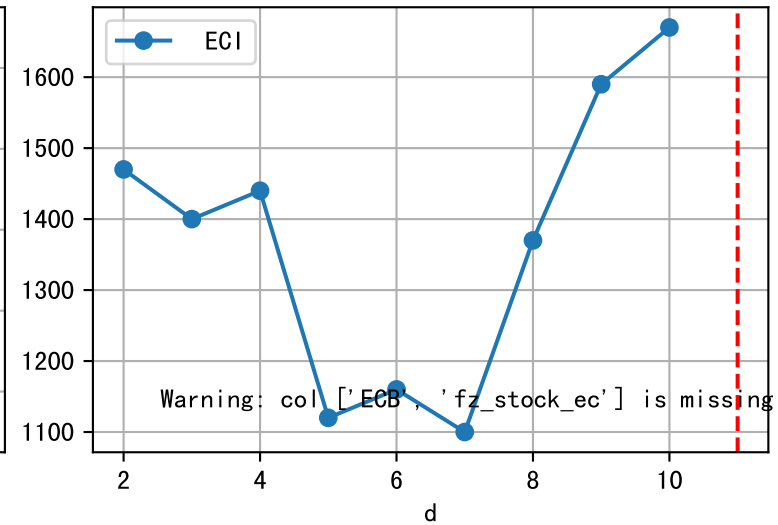
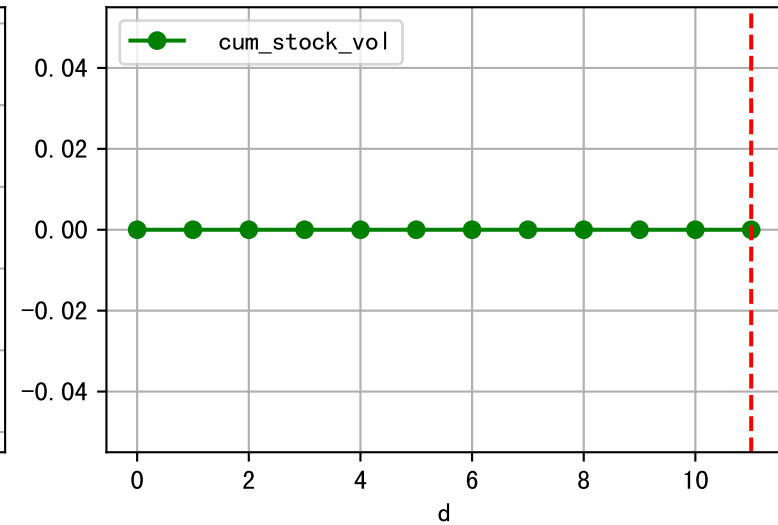
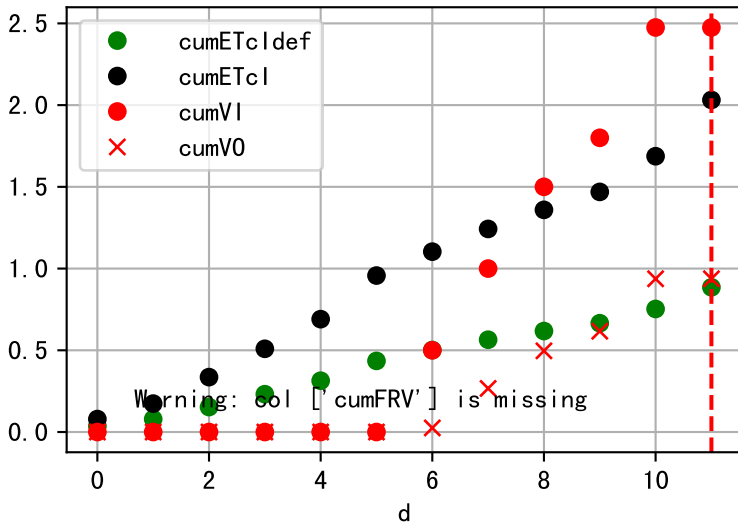
Plot [[' FVOPH:r-o', ' PHO:g-o']]



Plot ET/VN



Plot Fv and fertilizer usage





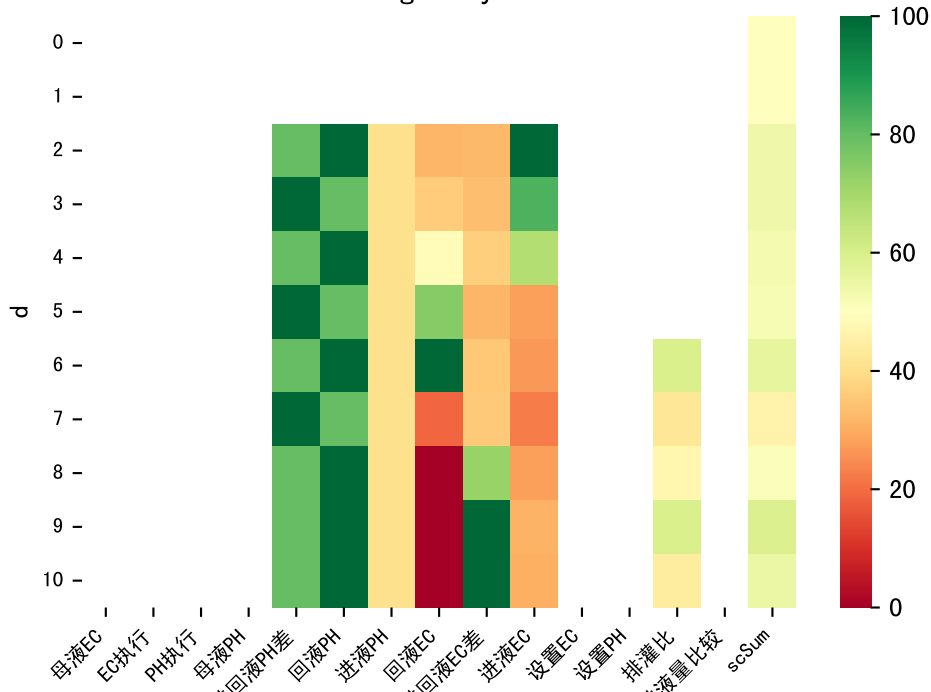
Fertilizer Range Source: kerleyL, kerleyH, UnivFL, TNAI, Haifa

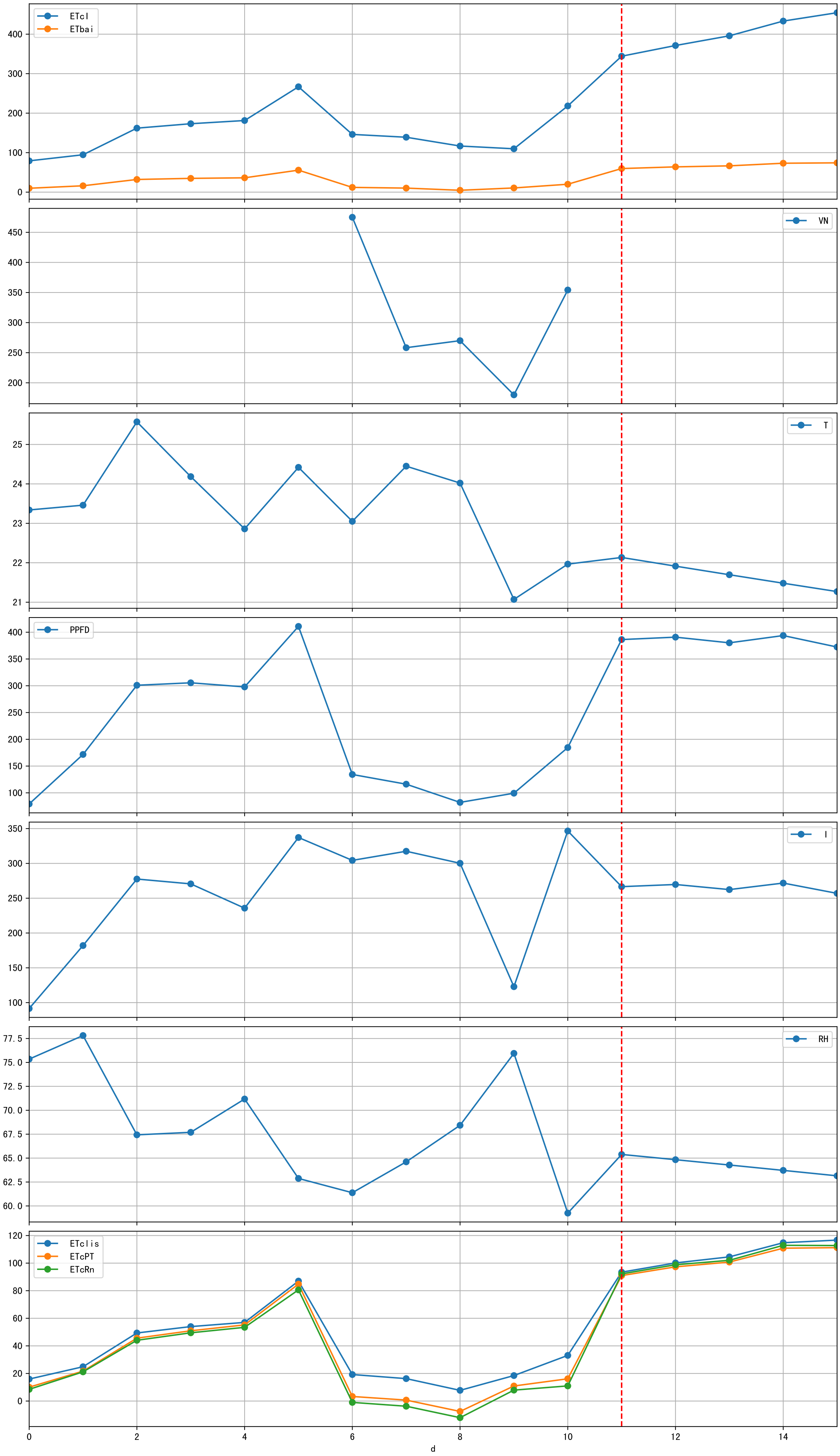


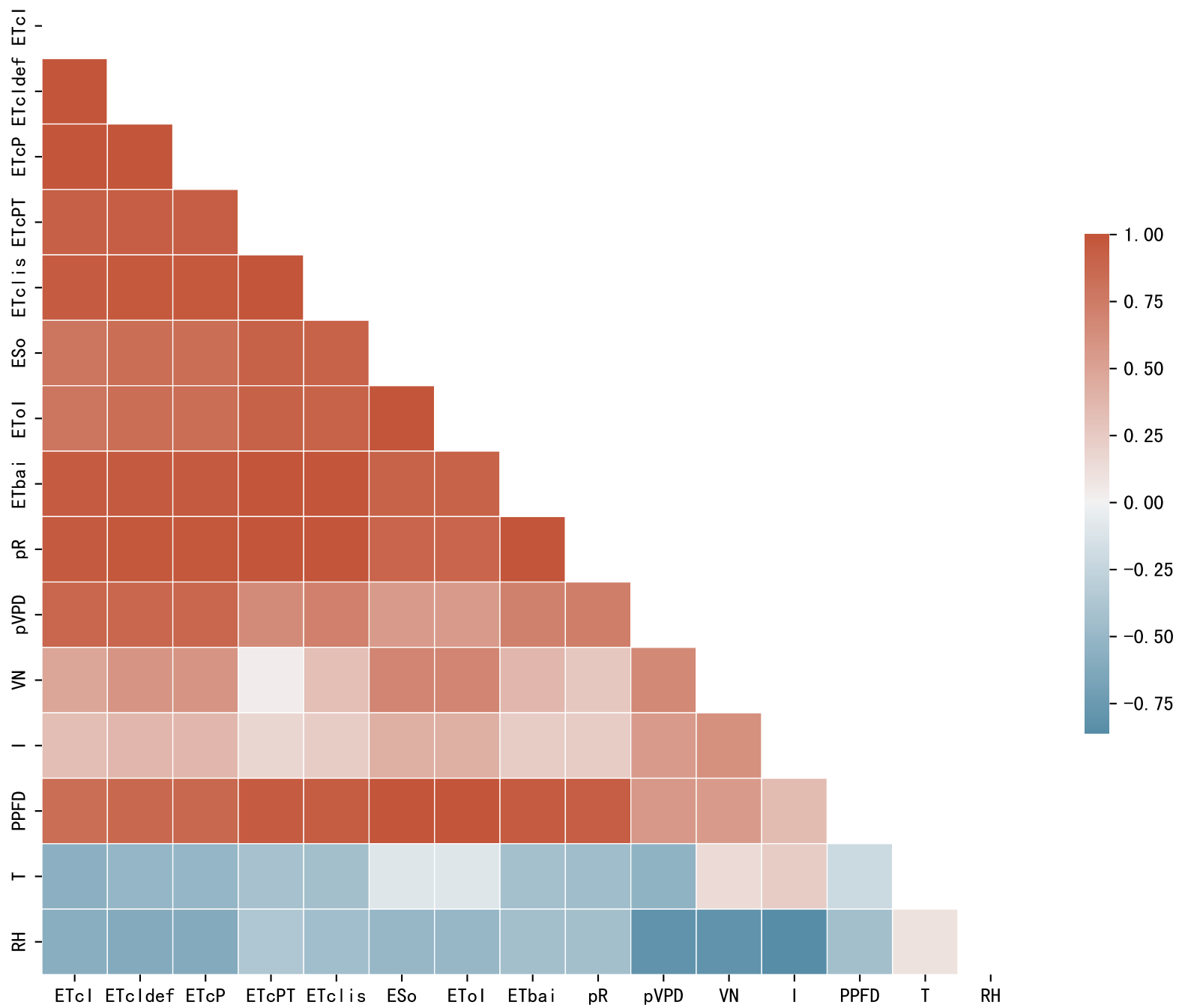
Trend plot for P2-9_0

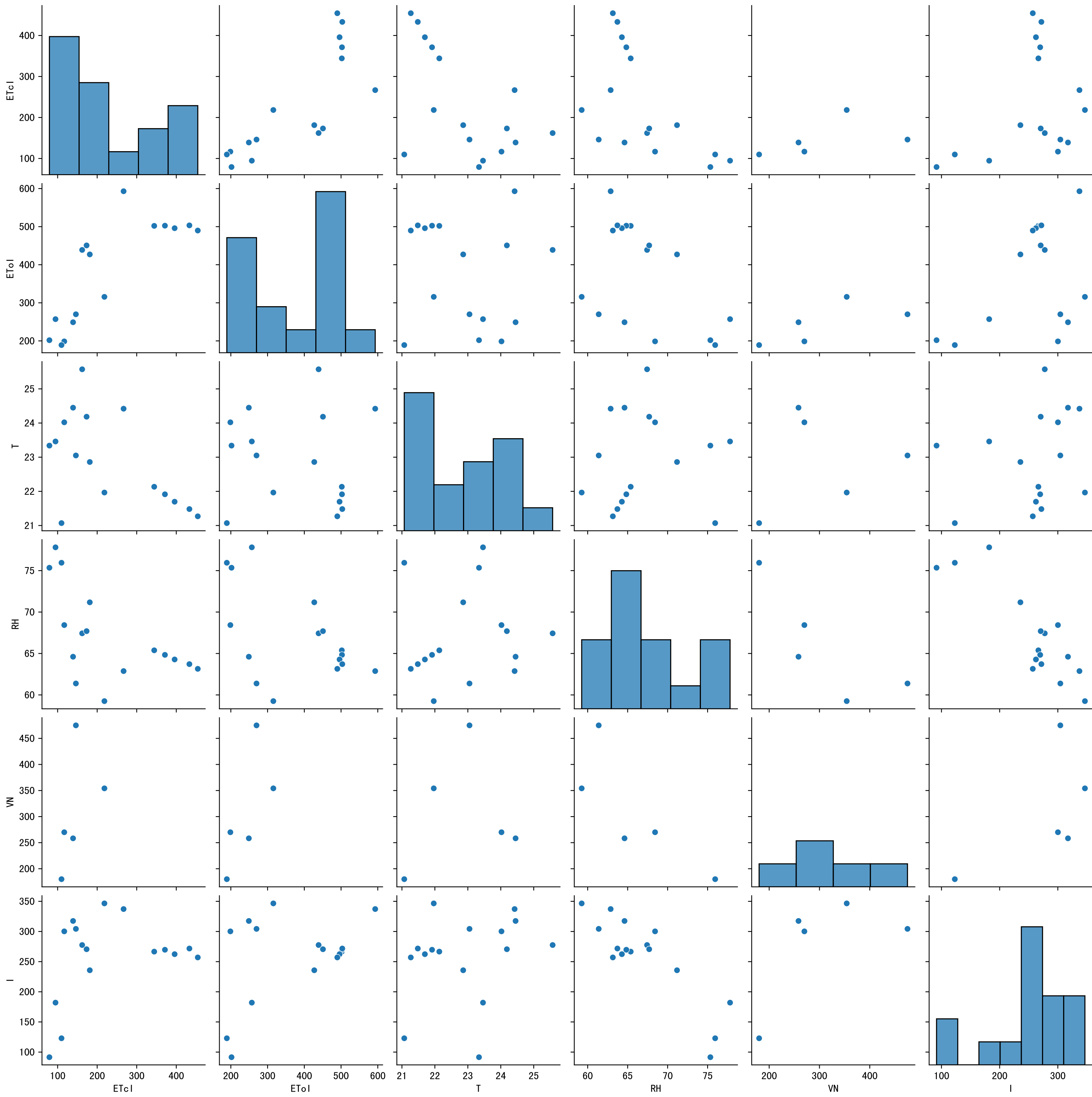


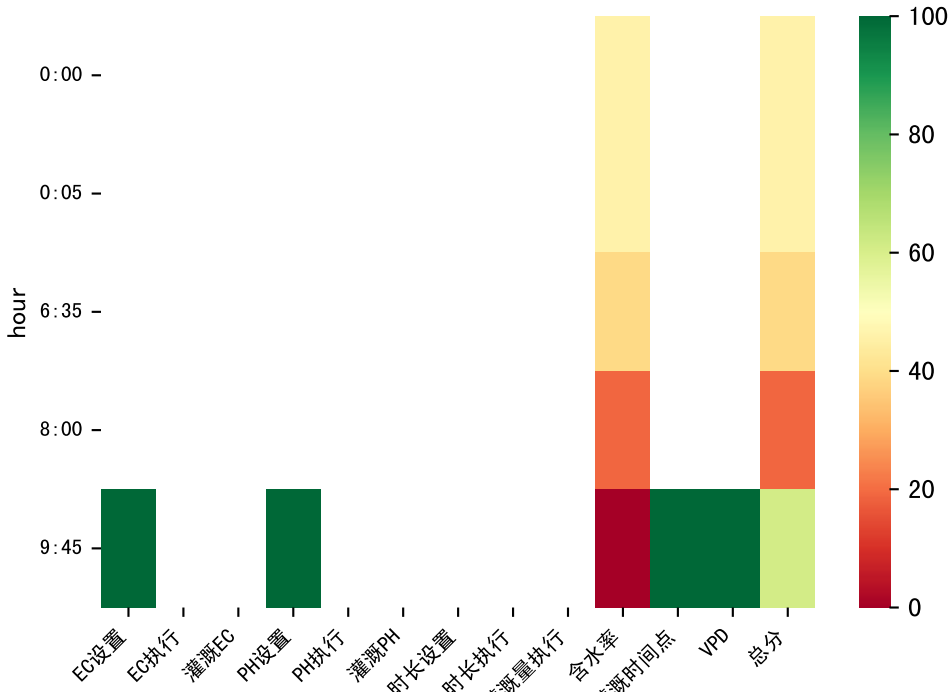
FgDaily



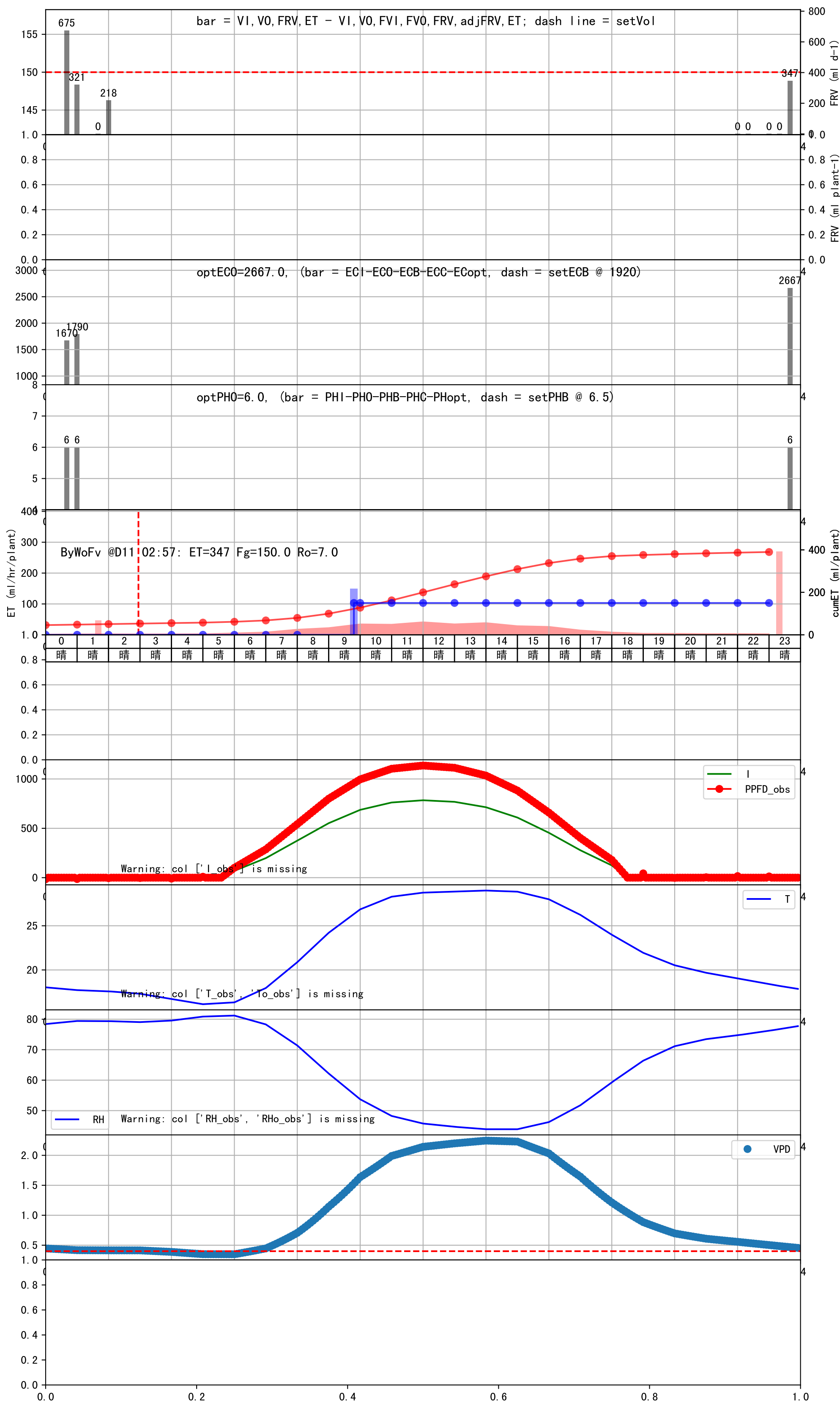


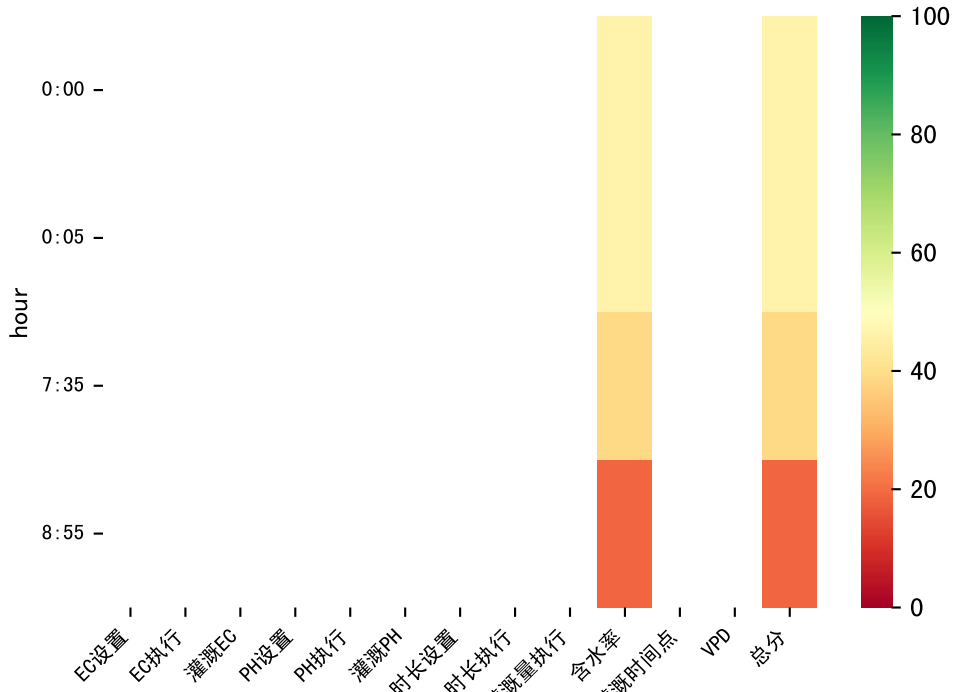




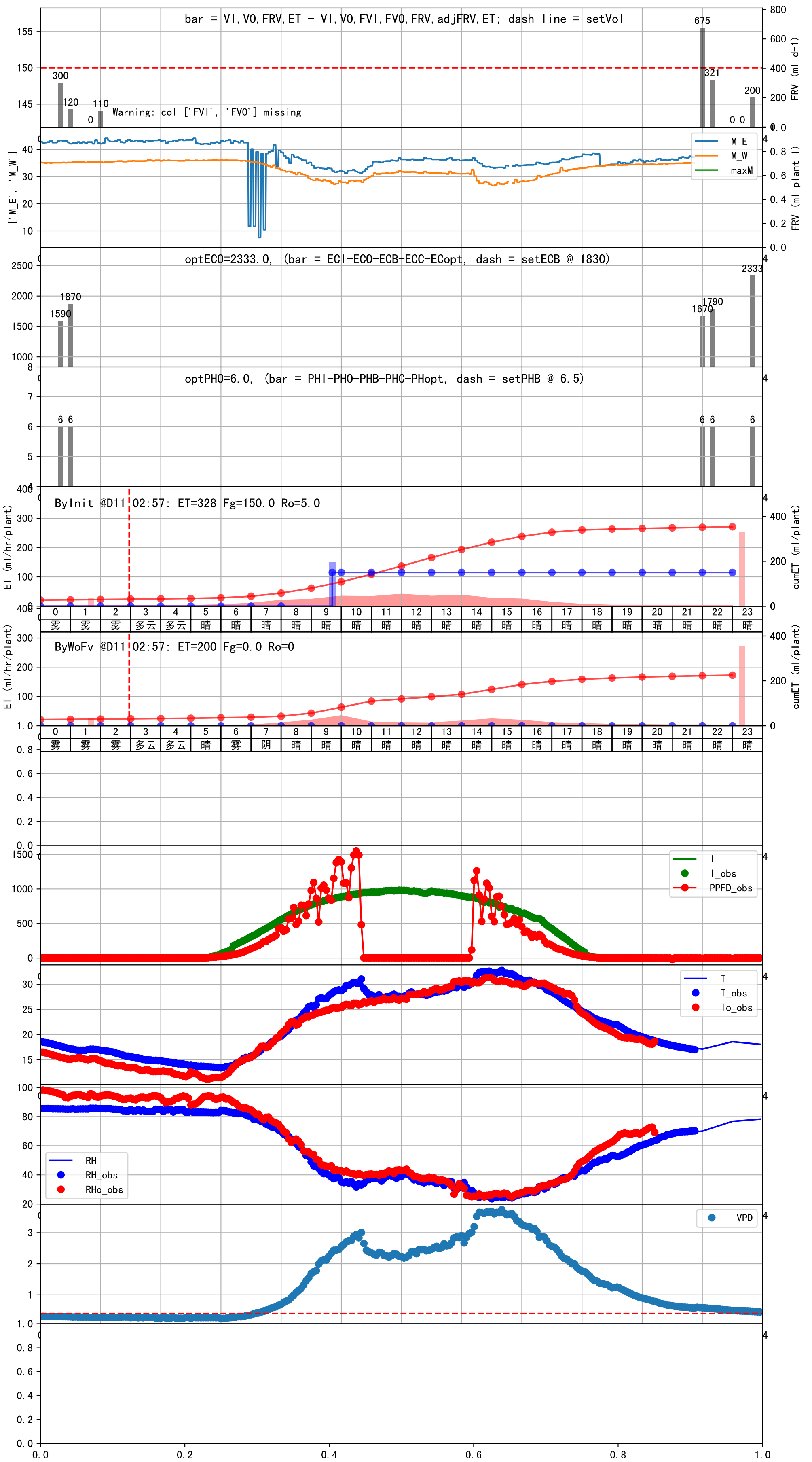


时间	灌溉时长(秒)	灌溉量(毫升/株)	灌溉总量(方/次)	天气	注释
09:45	300	150.0	1.62	晴	预期@09:45 手动 (未用传感器)
总计	300.0 (1次)	150.0			建议进液EC: 1920, PH: 6.5

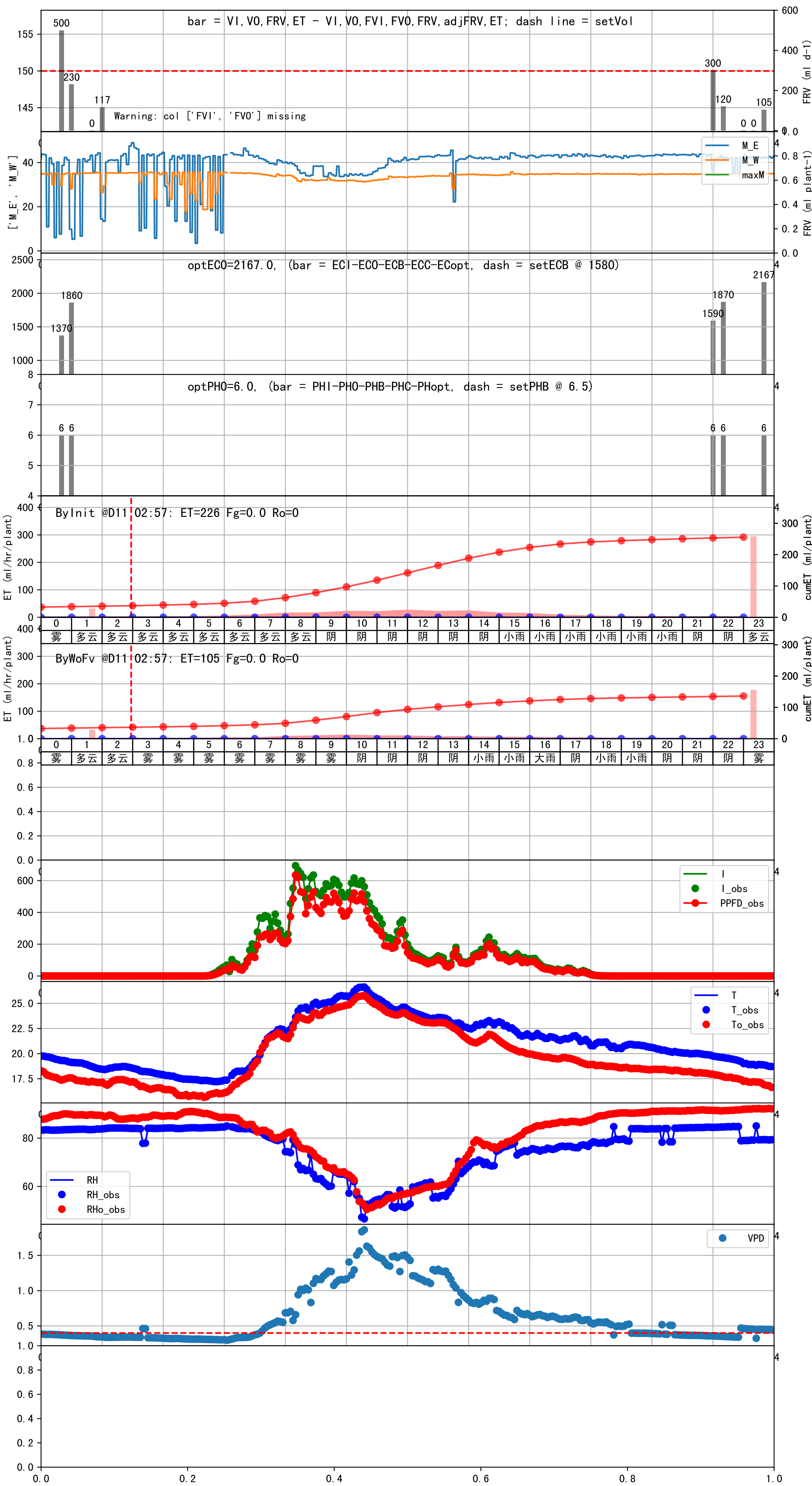


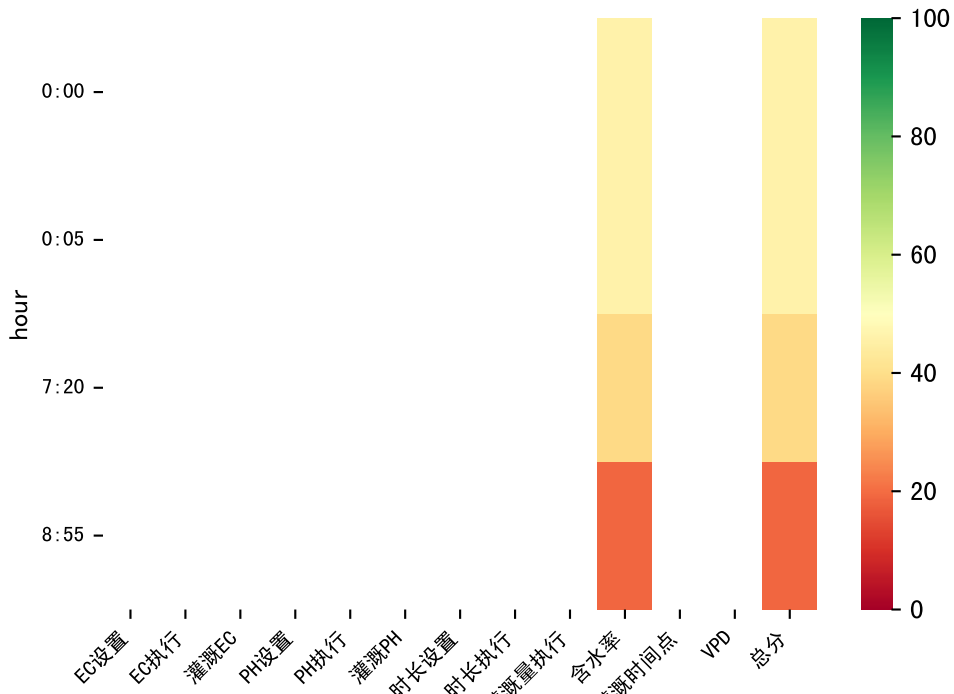


时间	灌溉时长(秒)	灌溉量(毫升/株)	灌溉总量(方/次)	天气	注释
总计	0 (0次)	0			建议进液EC: 1830, PH: 6.5

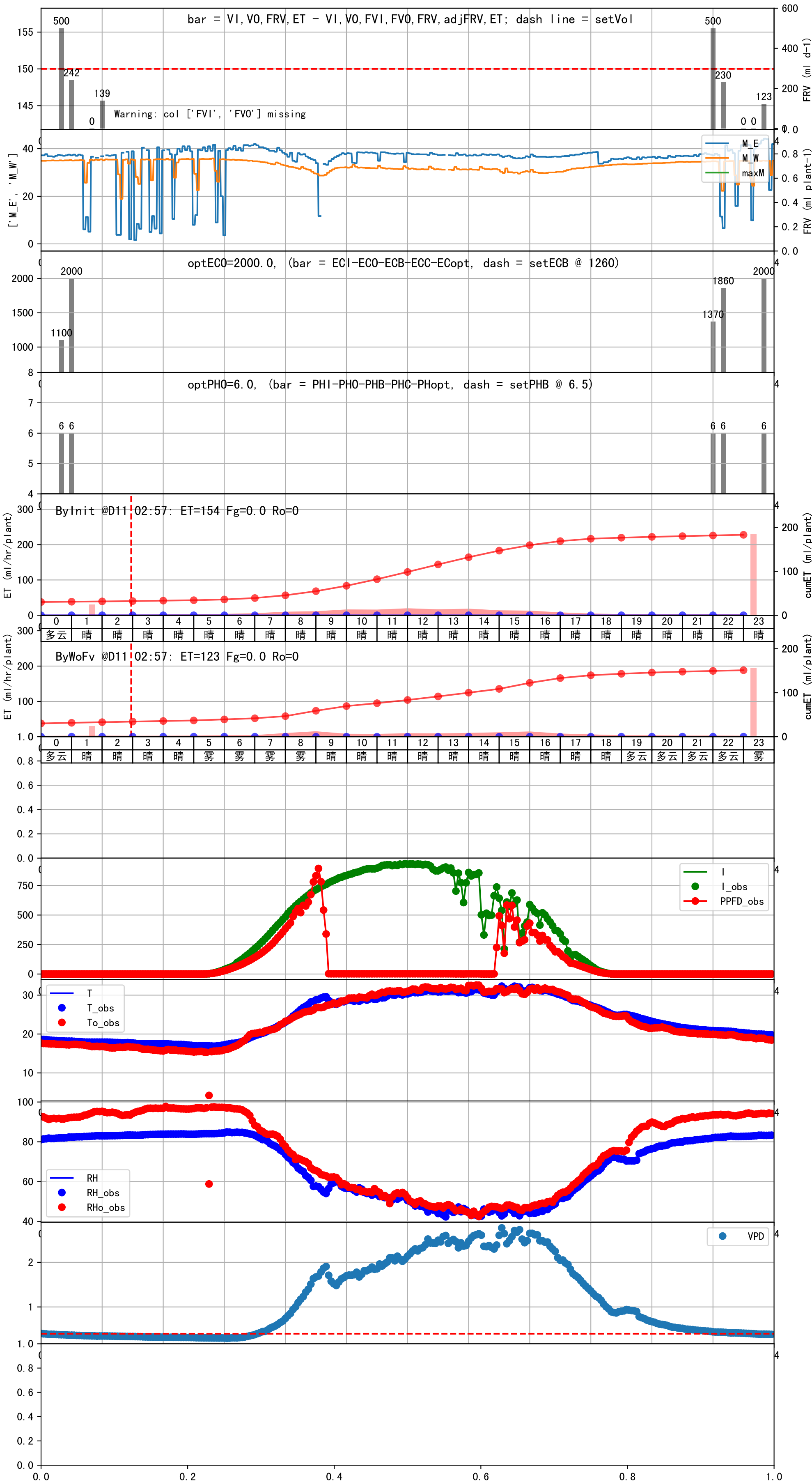


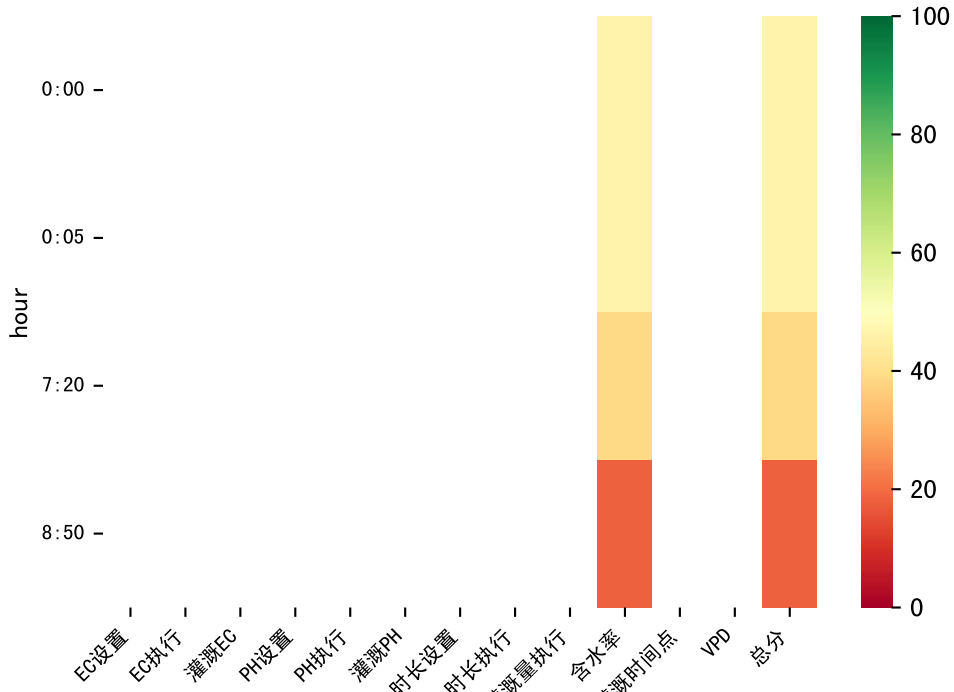
时间	灌溉时长(秒)	灌溉量(毫升/株)	灌溉总量(方/次)	天气	注释
总计	0 (0次)	0			建议进液EC: 1580, PH: 6.5





时间	灌溉时长(秒)	灌溉量(毫升/株)	灌溉总量(方/次)	天气	注释
总计	0 (0次)	0			建议进液EC: 1260, PH: 6.5





时间	灌溉时长(秒)	灌溉量(毫升/株)	灌溉总量(方/次)	天气	注释
总计	0 (0次)	0			建议进液EC: 1330, PH: 6.5

