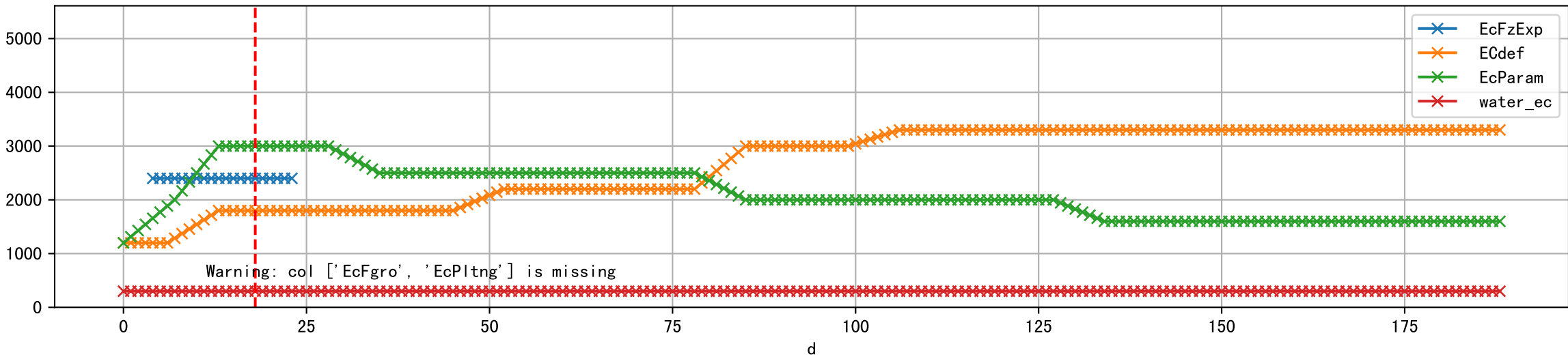
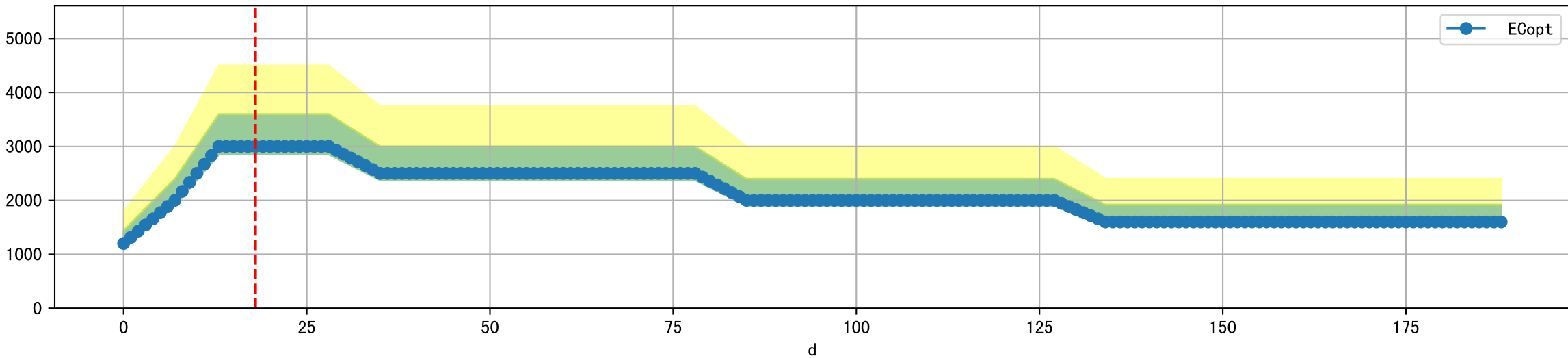


FgArea: [' 0']
NC11 P3-17
2025-11-11 (Day 18)

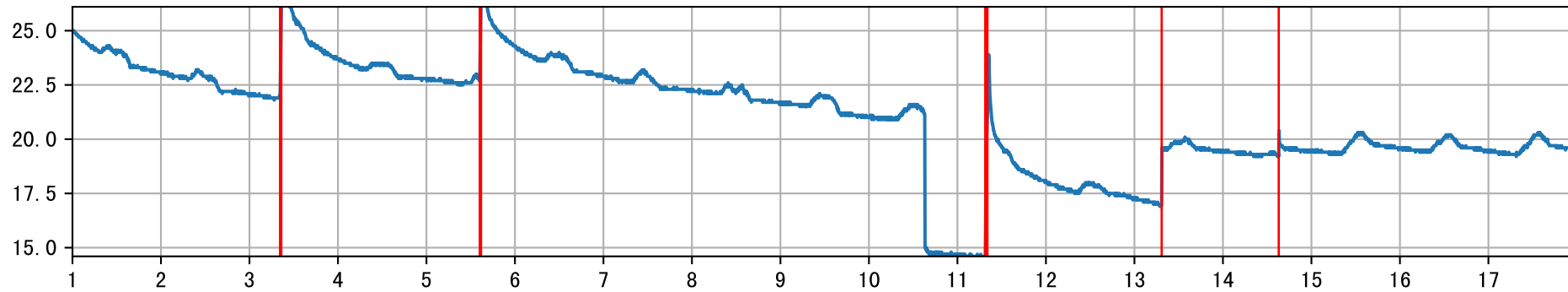
Plot [['EcFgro', 'EcFzExp', 'EcPltng', 'ECdef', 'EcParam', 'water_ec']]



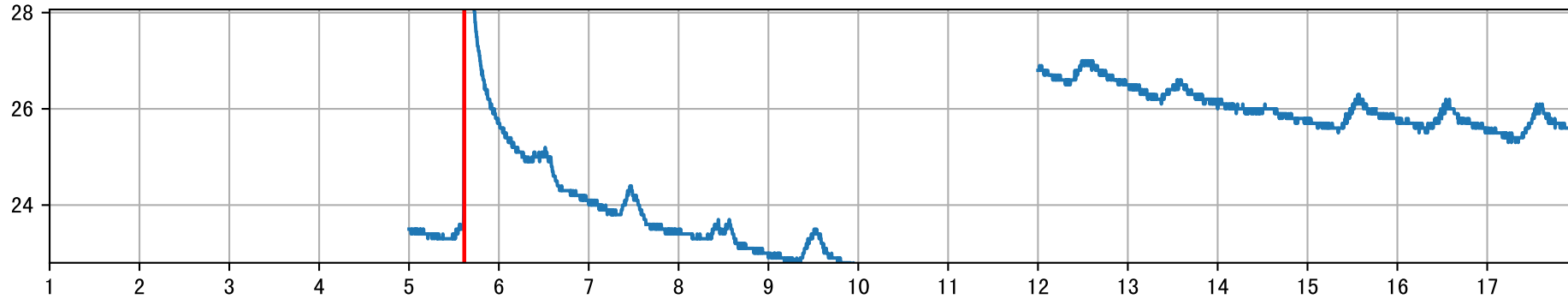
Plot [' ECopt ']



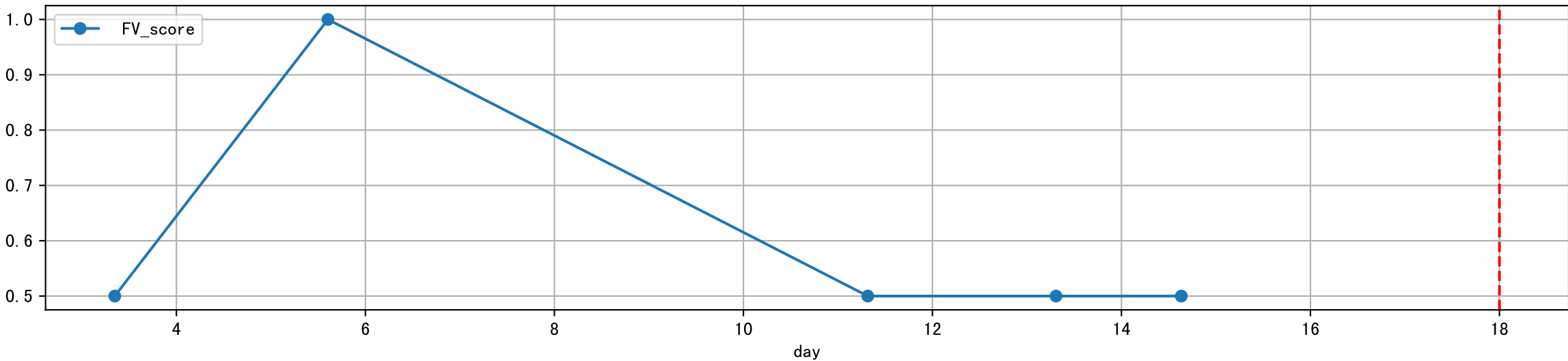
P3-17_0: M_E



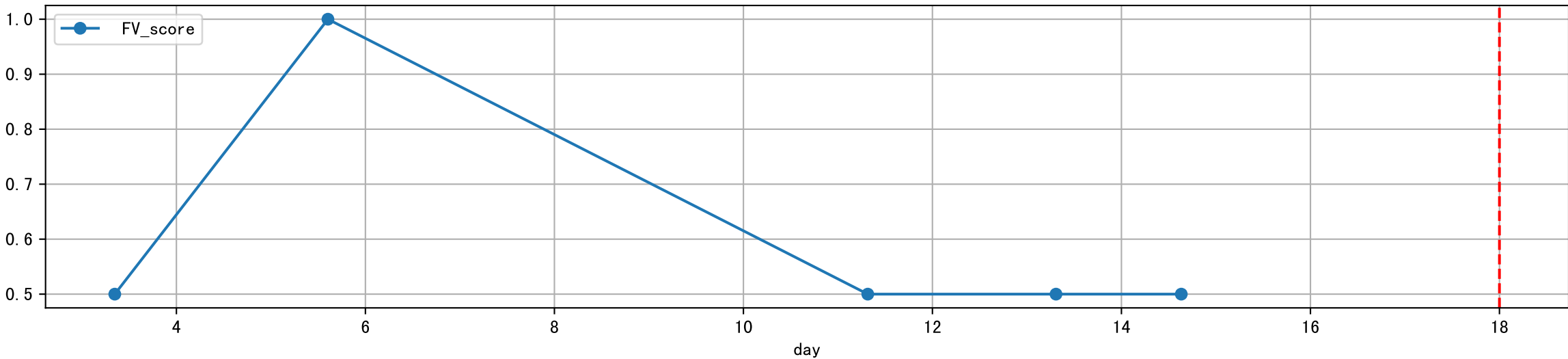
P3-17_0: M_W

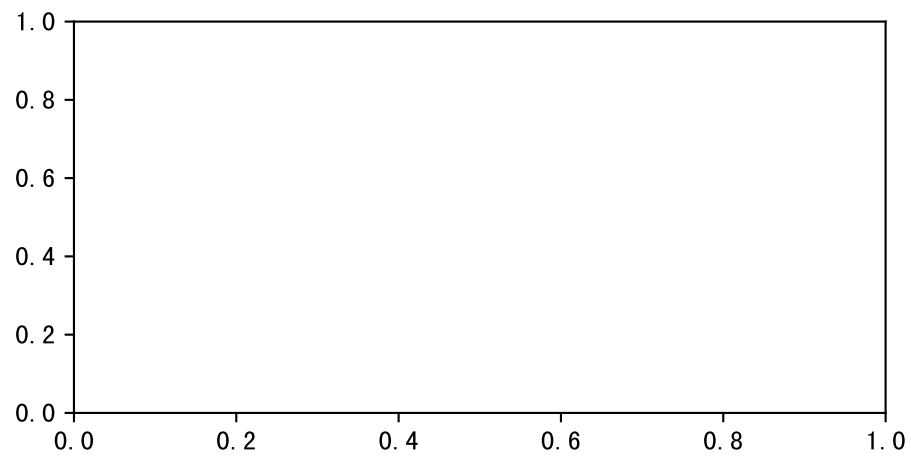
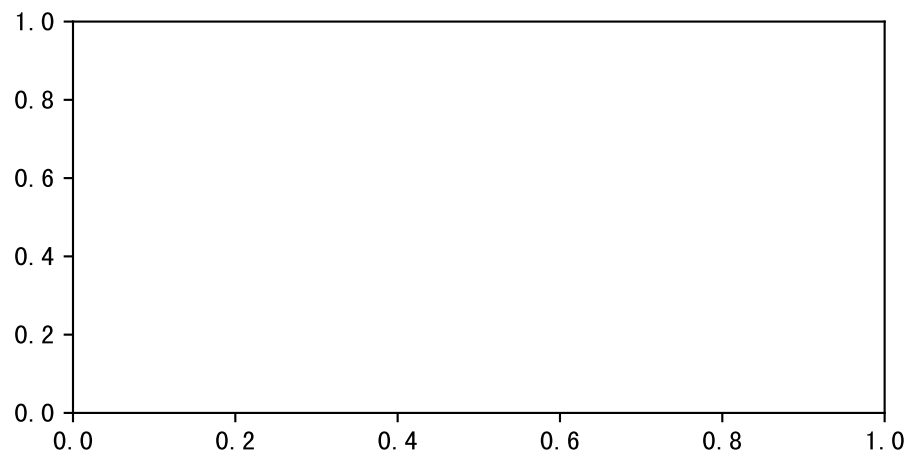
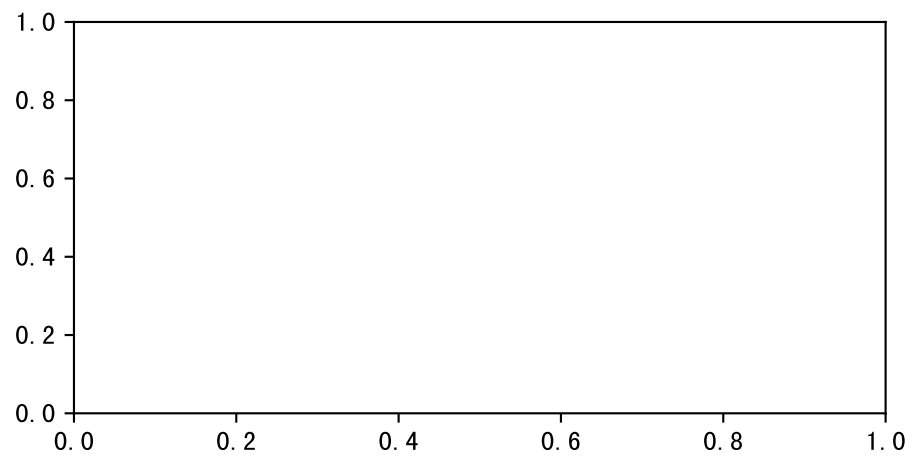
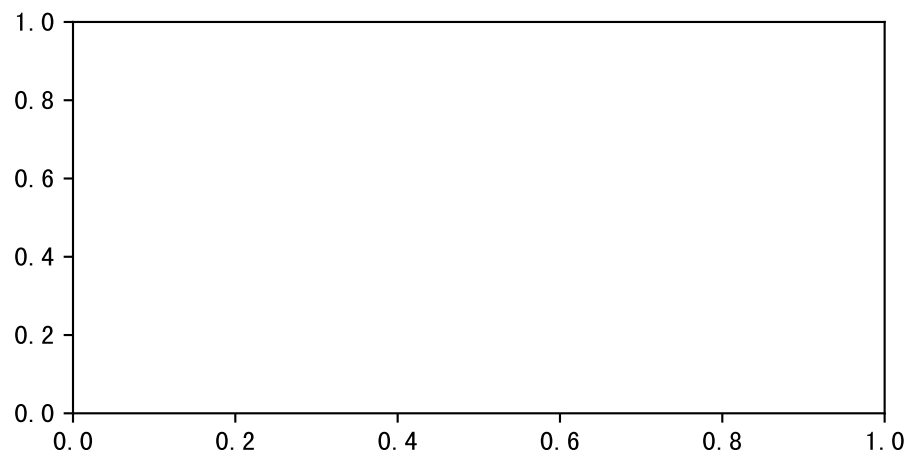
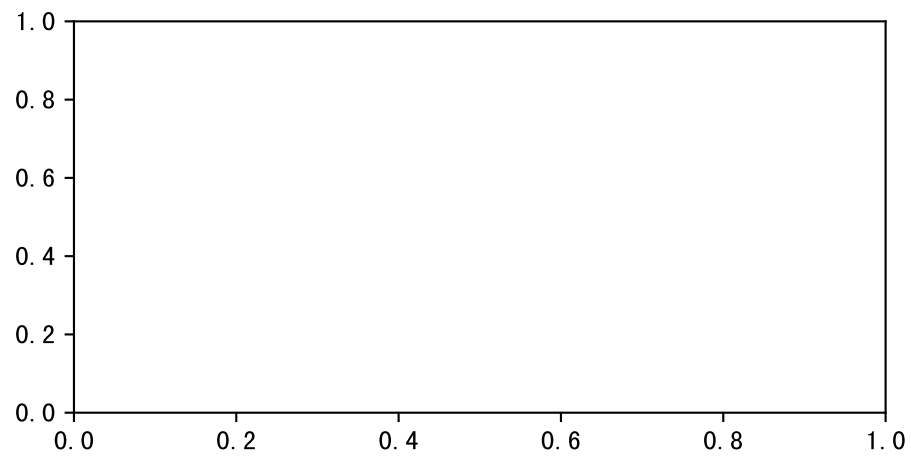
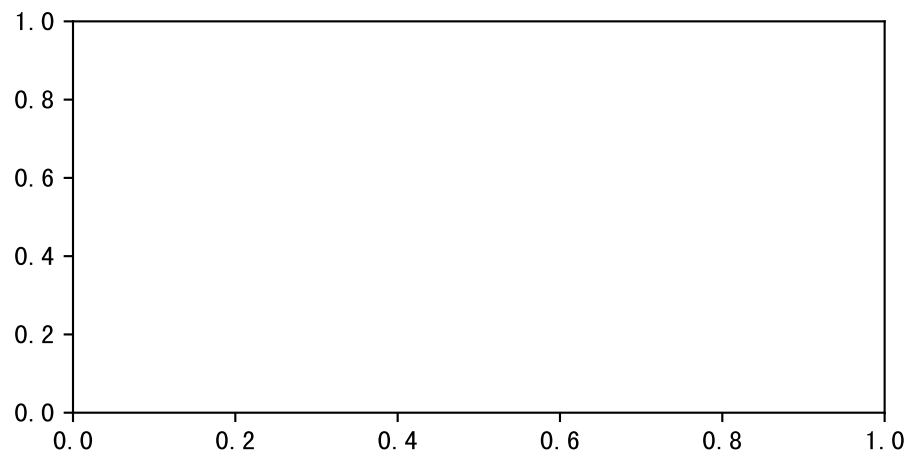


plot dfFv

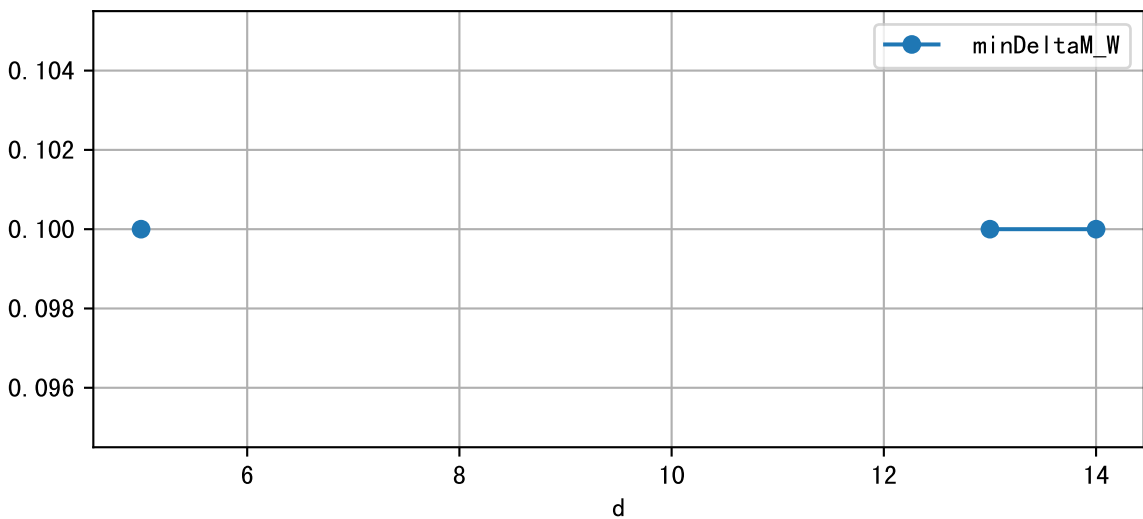


plot dfFv (daily Agg)

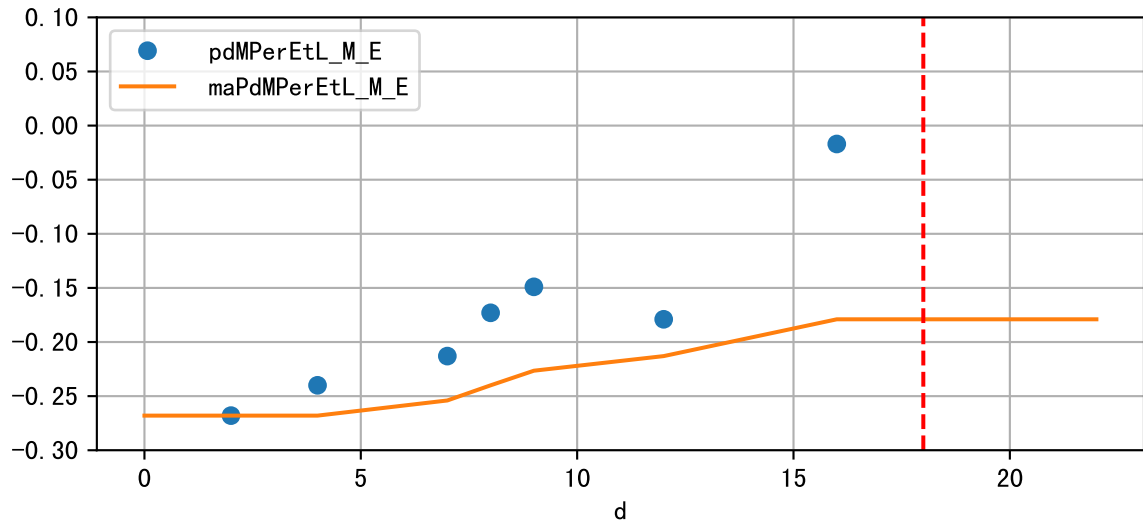
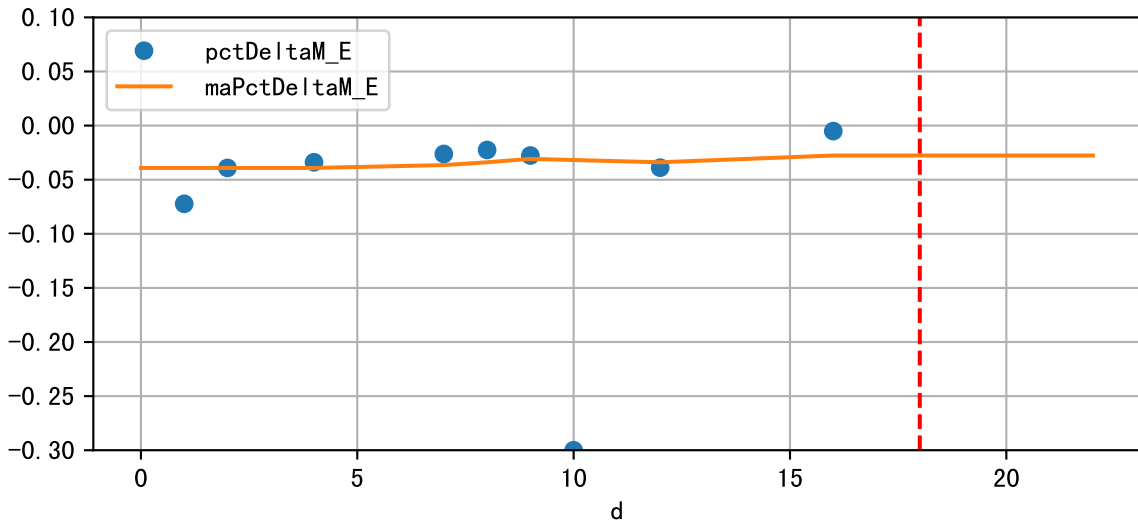




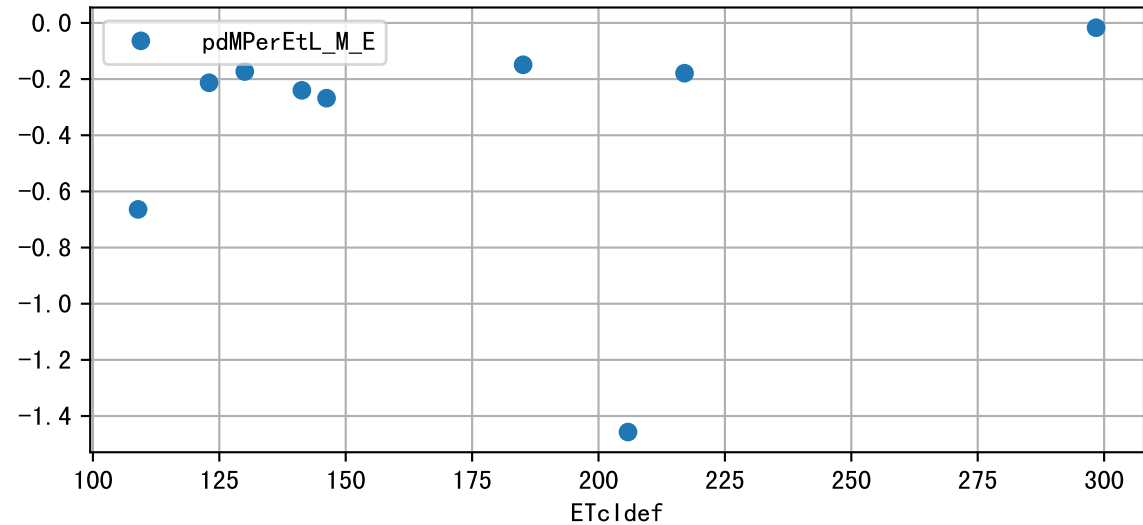
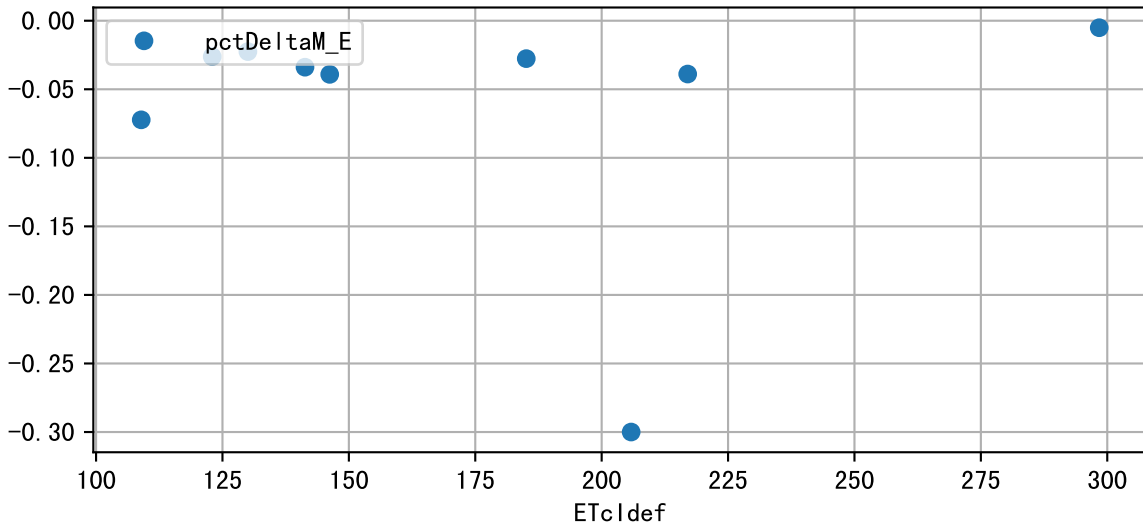
Plot minDeltaM, minDeltaMs, minDeltaMt



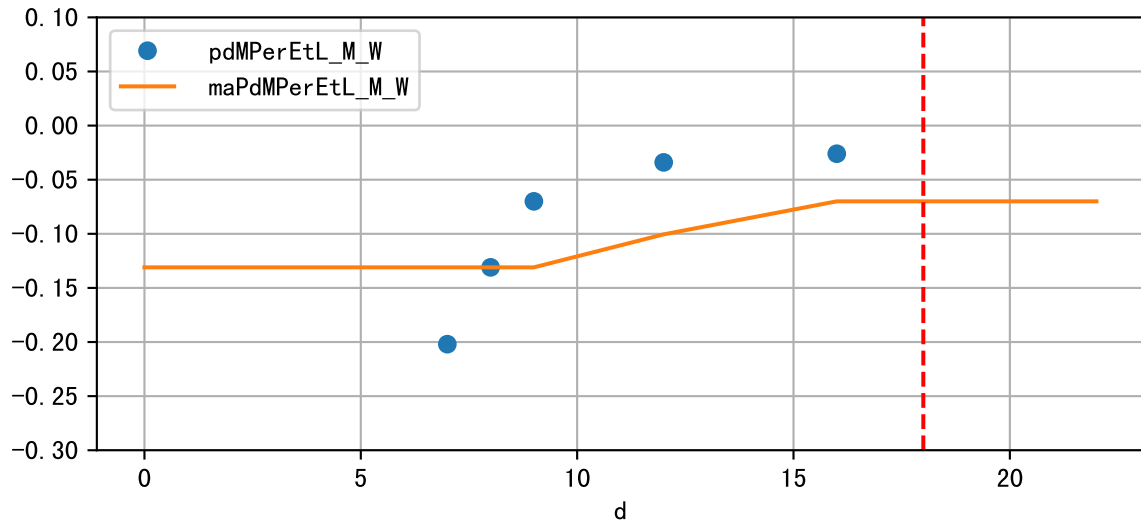
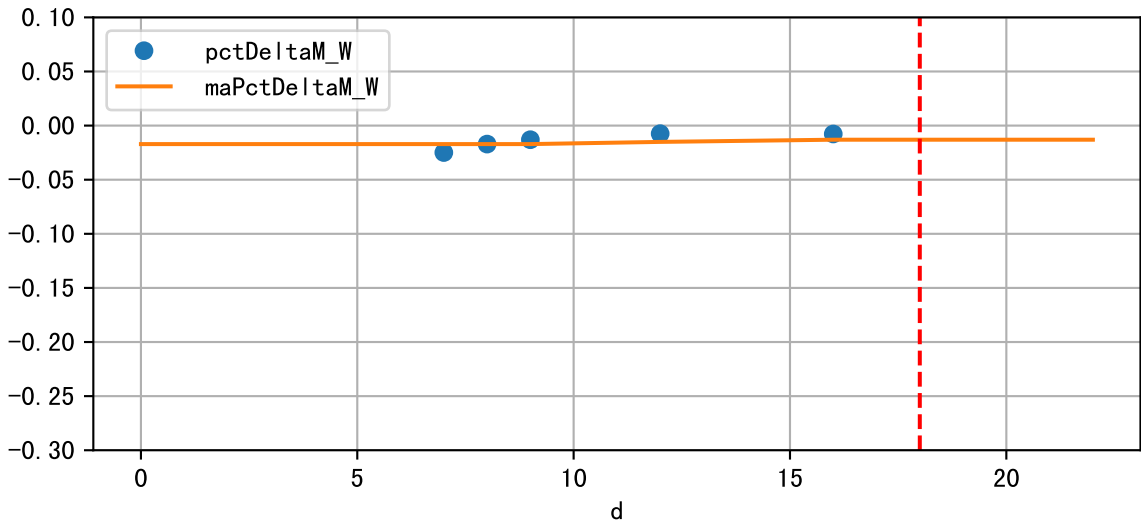
Daily %DeltaM and %DeltaM/1000ml ETcIdef for M_E (-2.8%/D, -17.9%/1000ml ET)



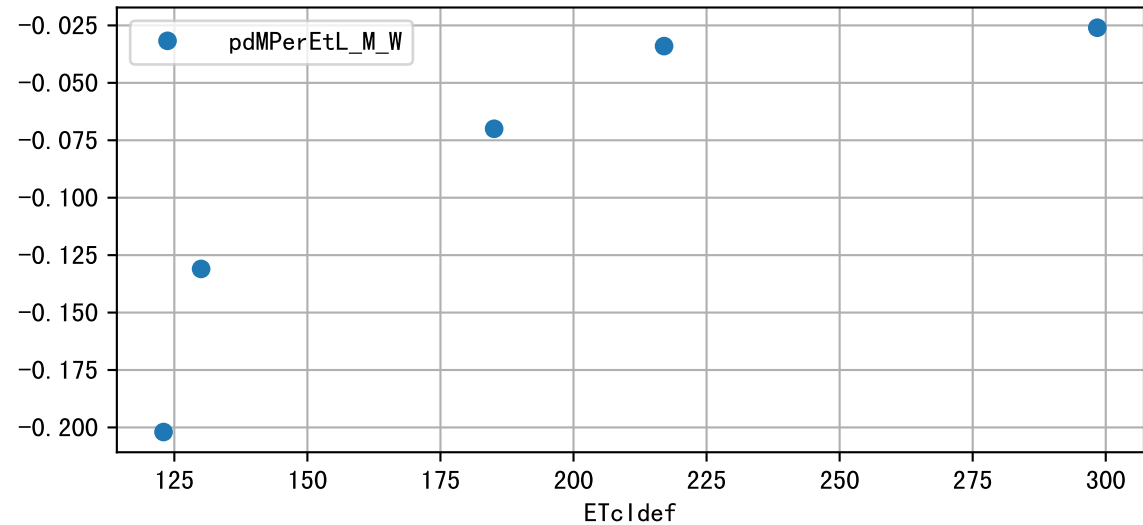
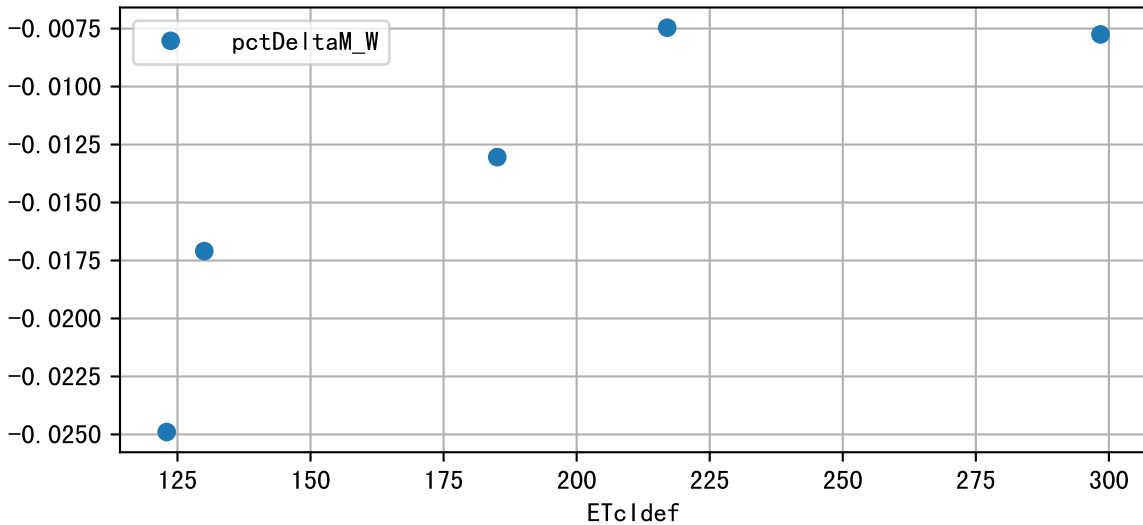
ETcldef vs pctDeltaM and pdMPerEtL for M_E



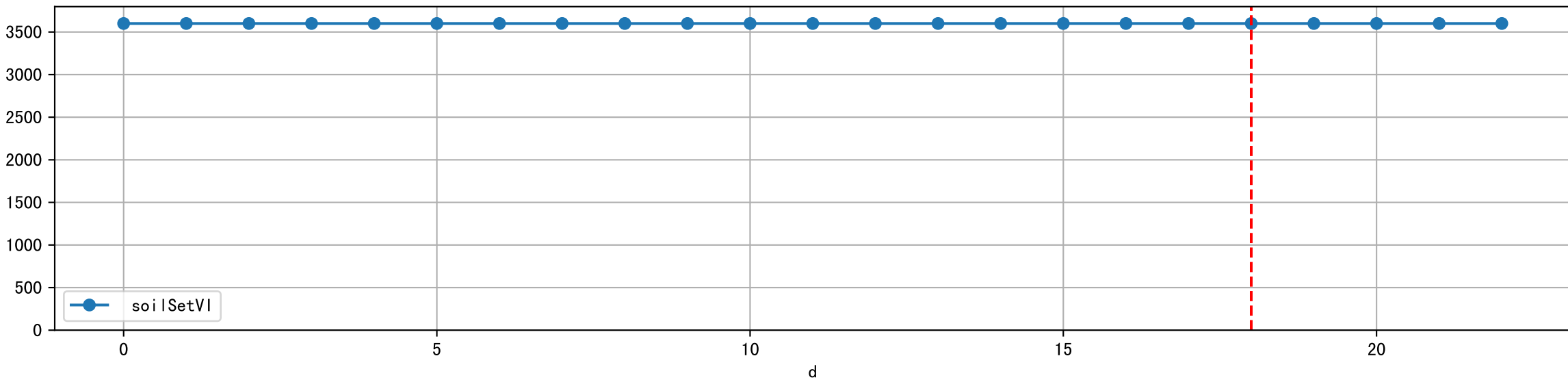
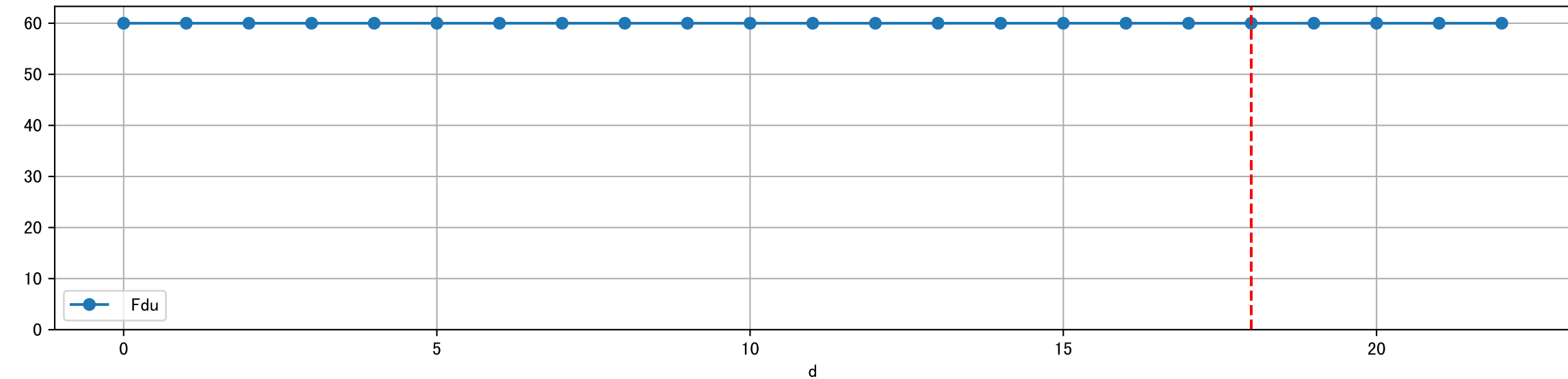
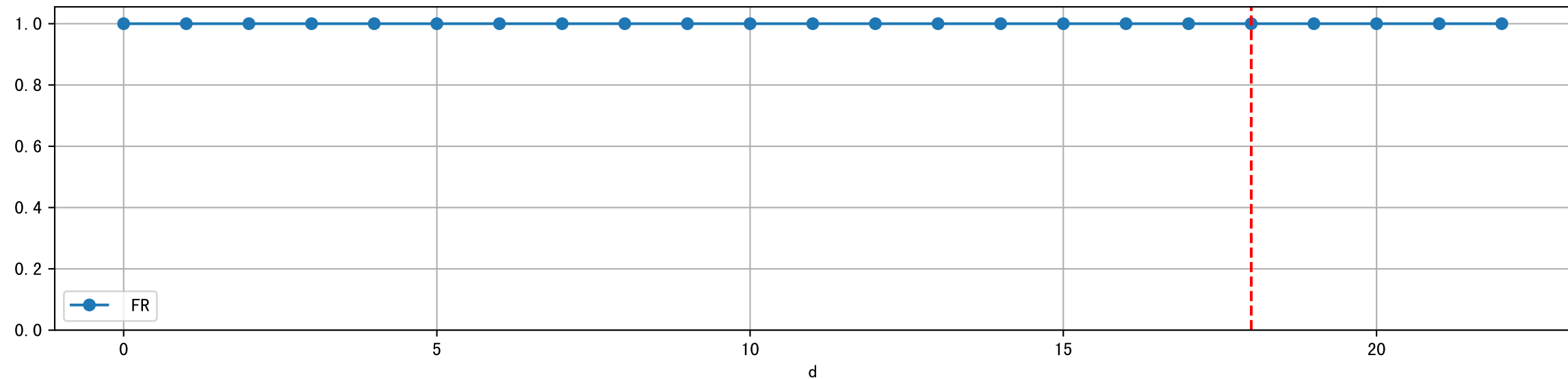
Daily %DeltaM and %DeltaM/1000ml ETcIdef for M_W (-1.3%/D, -7.0%/1000ml ET)



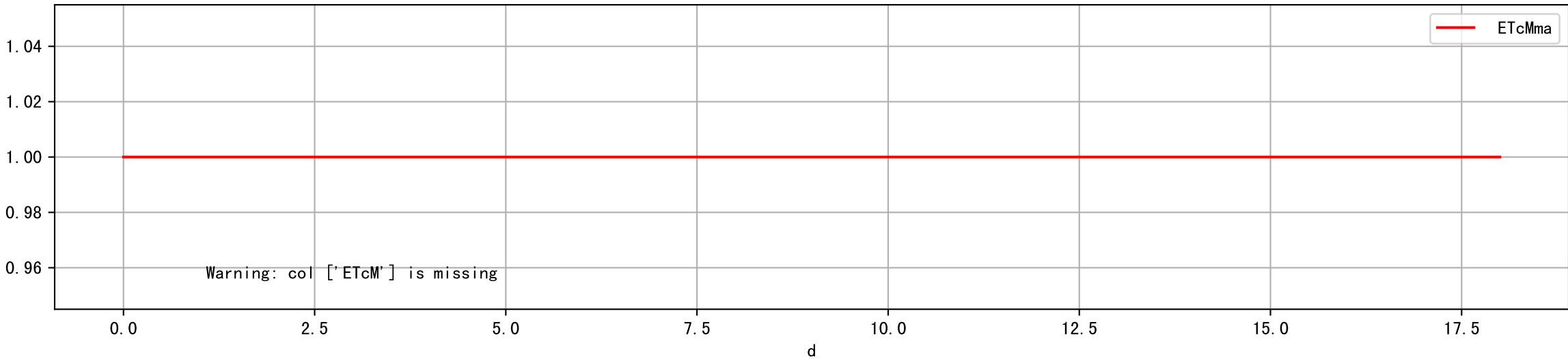
ETcldef vs pctDeltaM and pdMPerEtL for M_W



Plot ['FR', 'Fdu', 'soilSetVI']

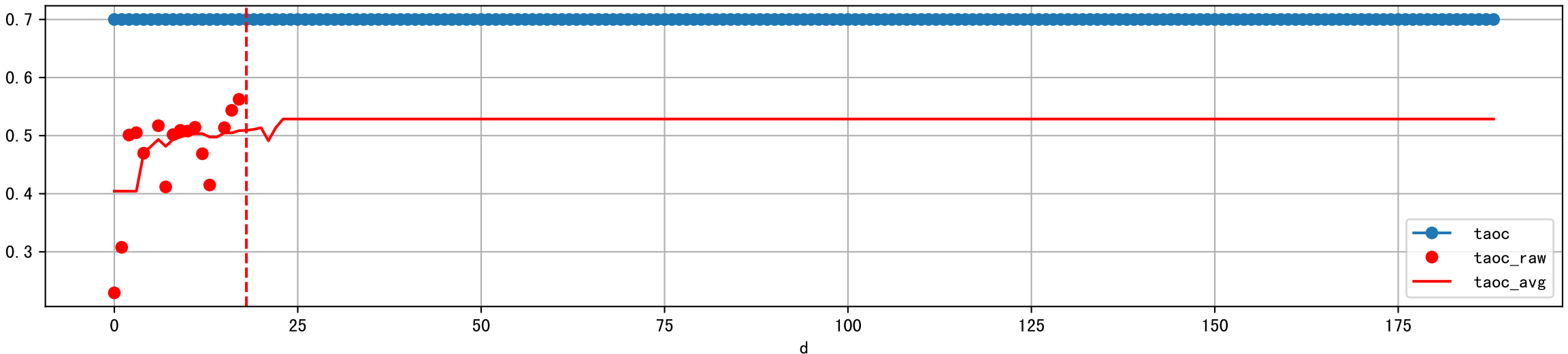


ETcM and ETcMma

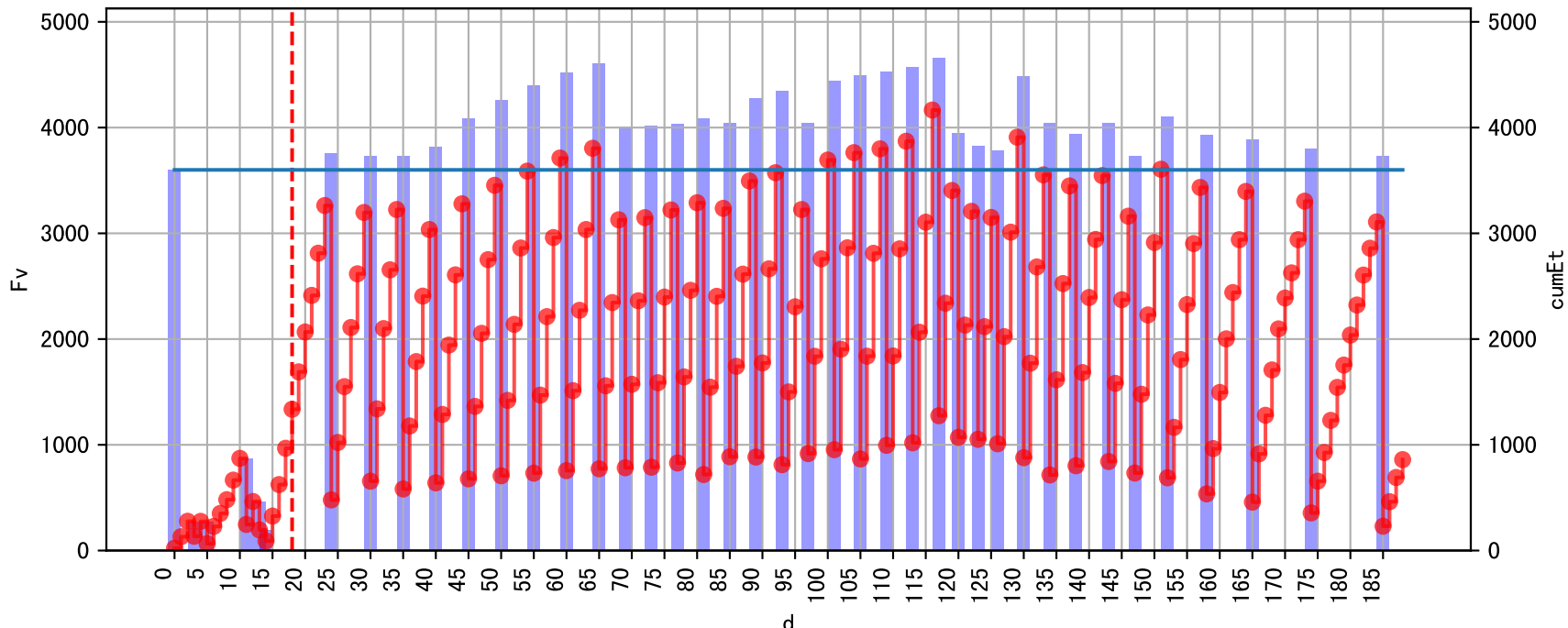


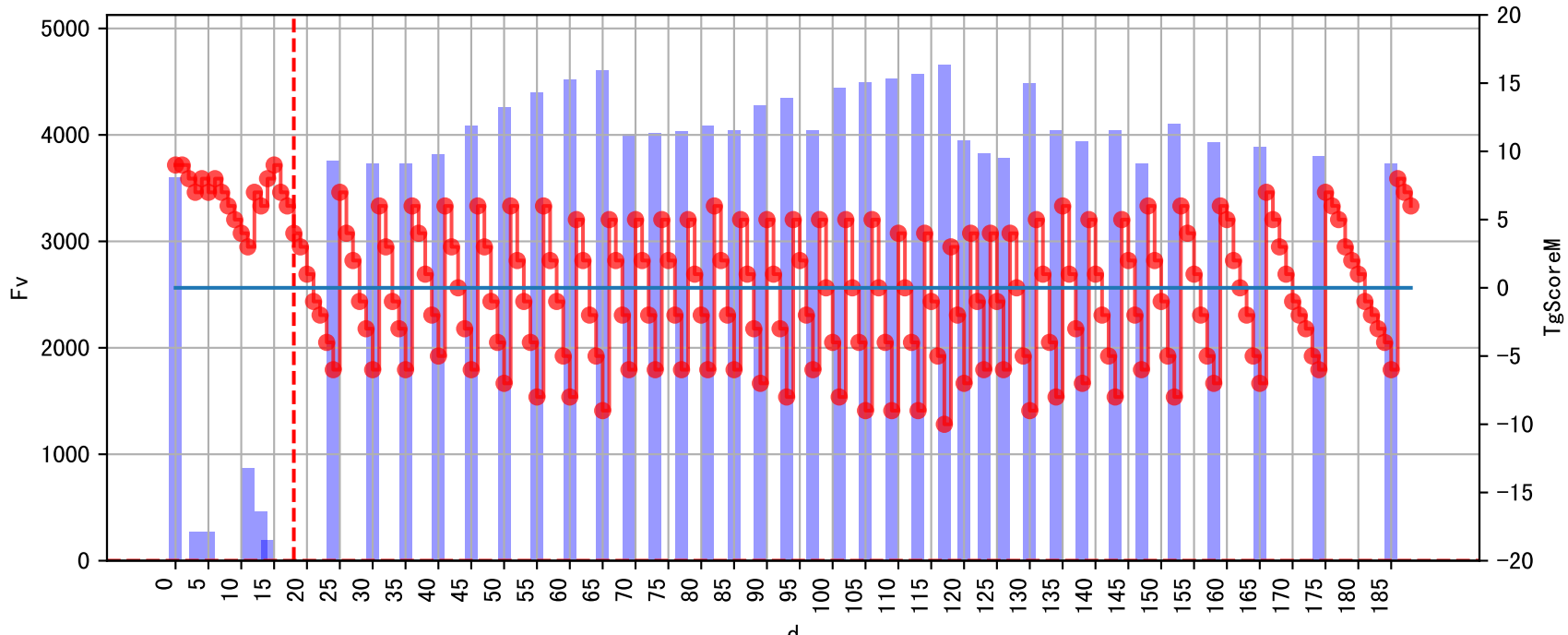


Plot [['taoc', 'taoc_raw:ro', 'taoc_avg:r-']]

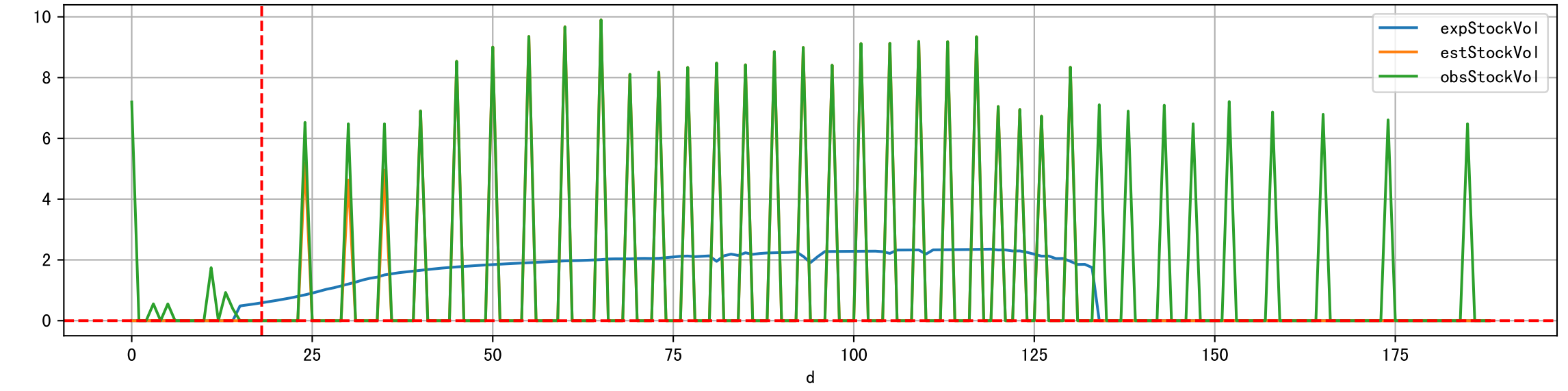
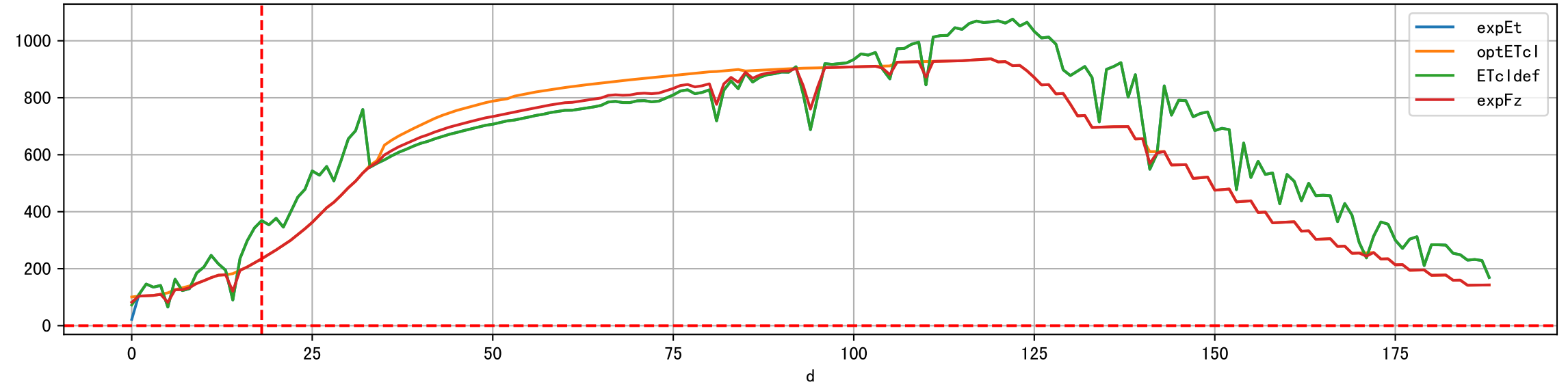
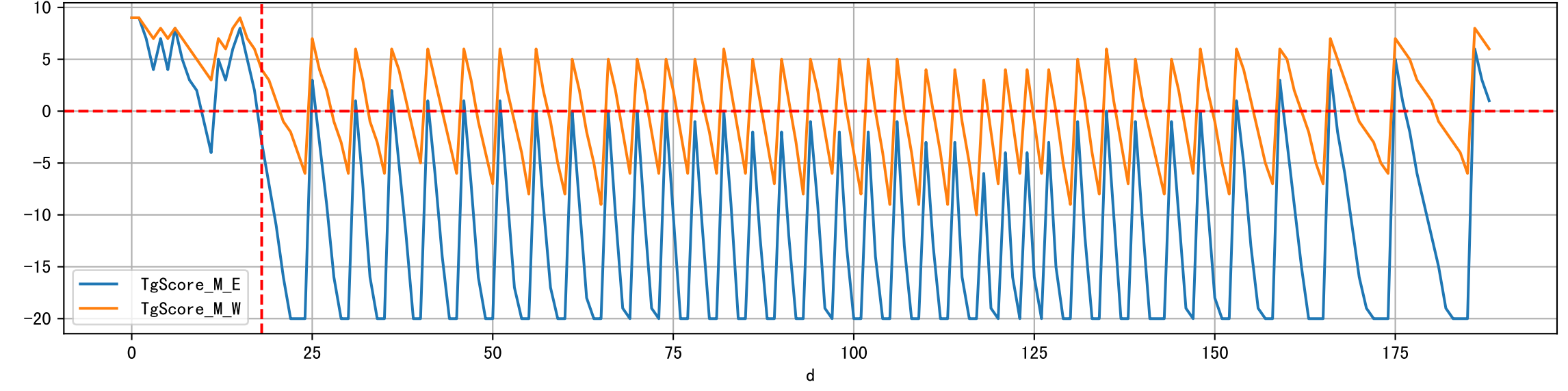
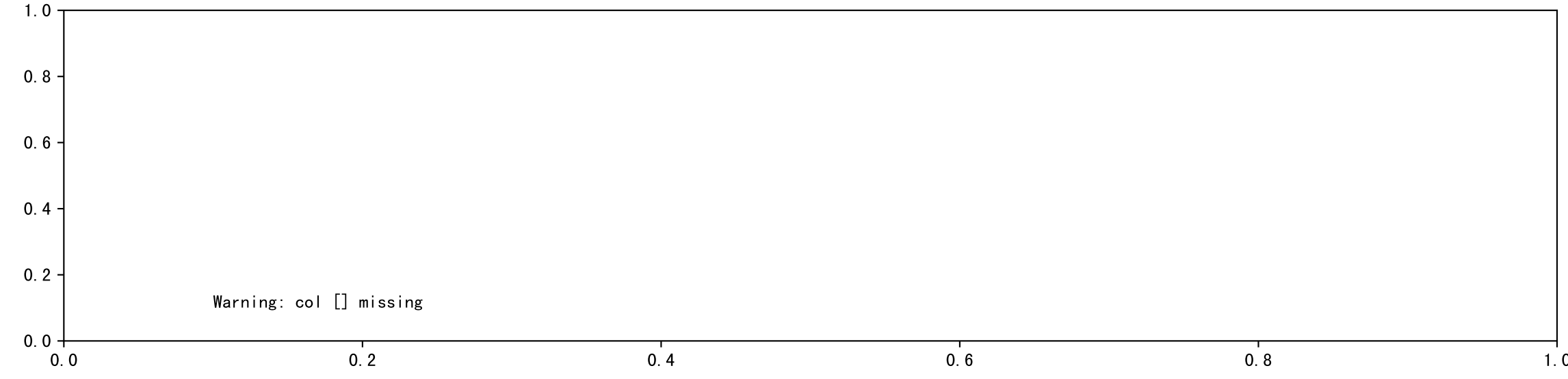
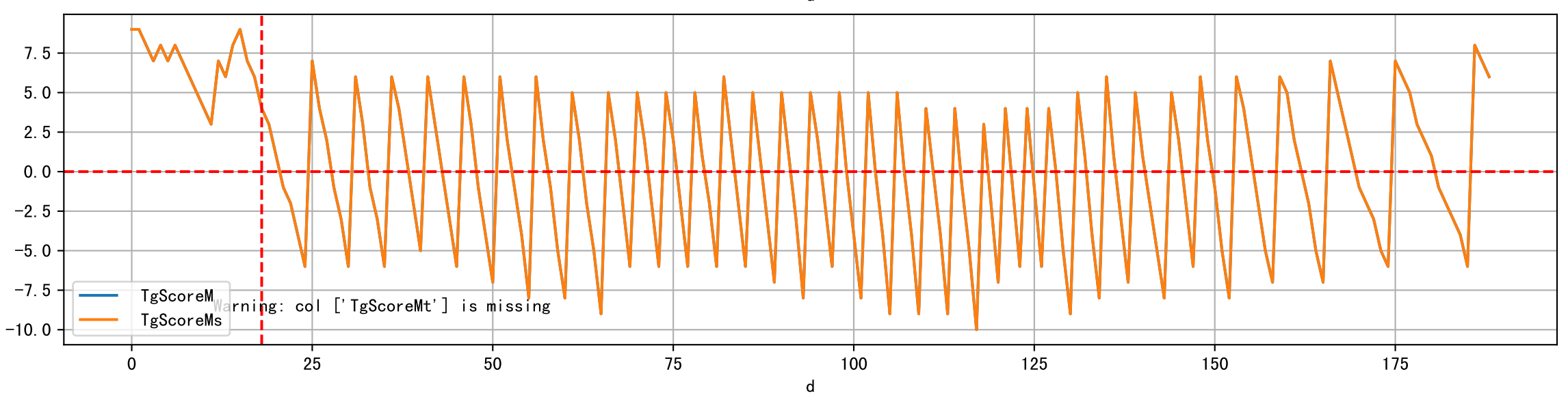
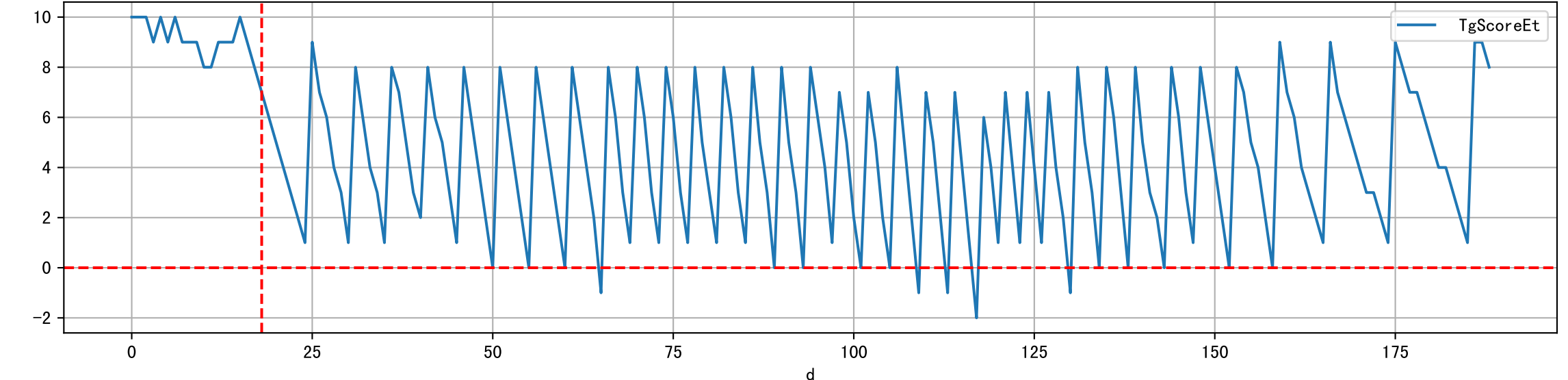


note	fz	fzStockID	expFDF	expEC	preDu	f
假设有灌溉, 有检测无记录未预期, 灌溉信息缺失(假设标准肥按需灌溉)	清水	NA	500.0	300.0	0.0	11
假设有灌溉, 有检测无记录未预期, 灌溉信息缺失(假设标准肥按需灌溉)	清水	NA	500.0	300.0	0.0	6
假设有灌溉, 有检测无记录未预期, 灌溉信息缺失(假设标准肥按需灌溉)	清水	NA	500.0	300.0	0.0	2
预期灌溉, 土壤肥已过量, 逐渐减肥	丰码有品苗期肥	1035	500.0	703.0	360.0	43
预期灌溉, 土壤肥已过量, 逐渐减肥	丰码有品苗期肥	1035	500.0	703.0	360.0	43
预期灌溉, 土壤肥已过量, 逐渐减肥	丰码有品果期肥	TBD	500.0	663.0	360.0	43
预期灌溉	丰码有品果期肥	TBD	469.3	679.0	471.0	43

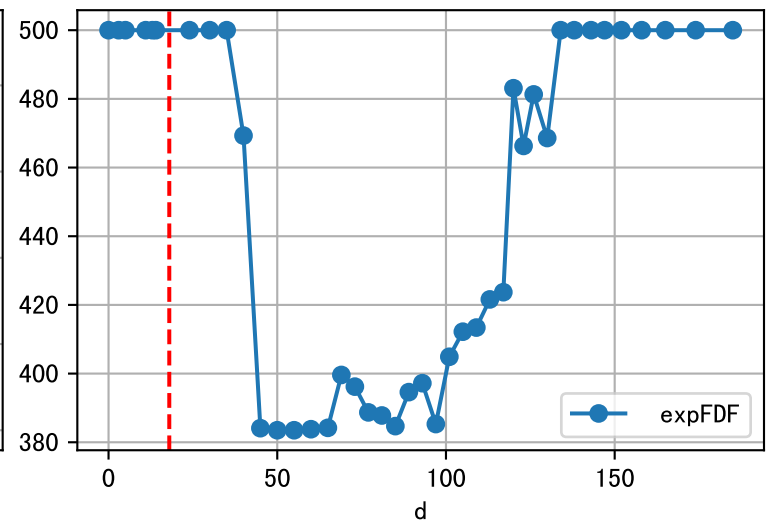
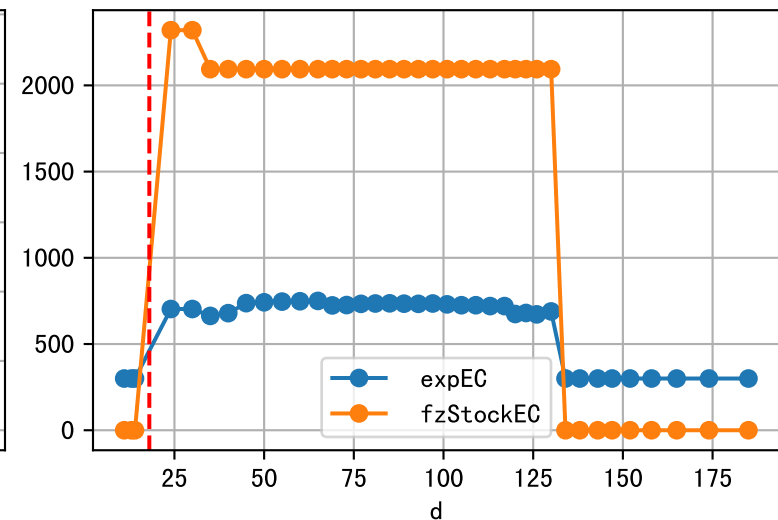
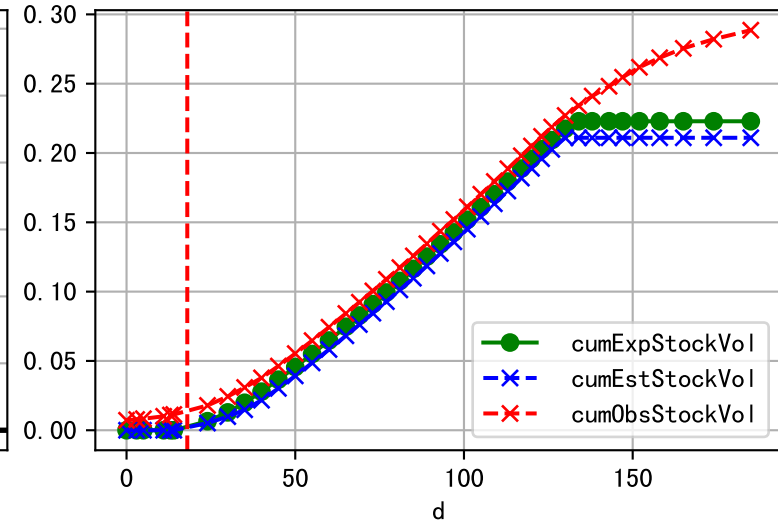
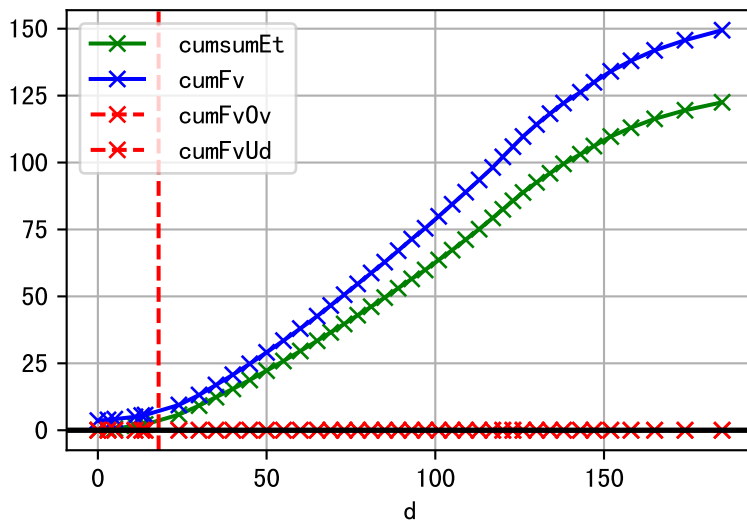




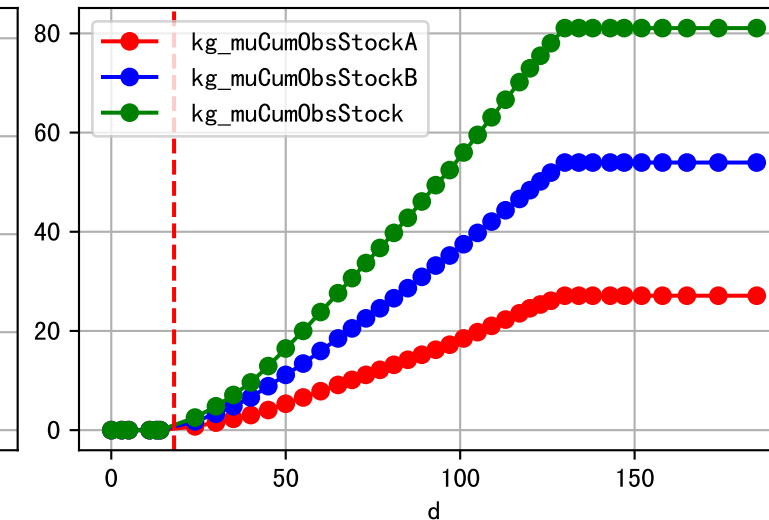
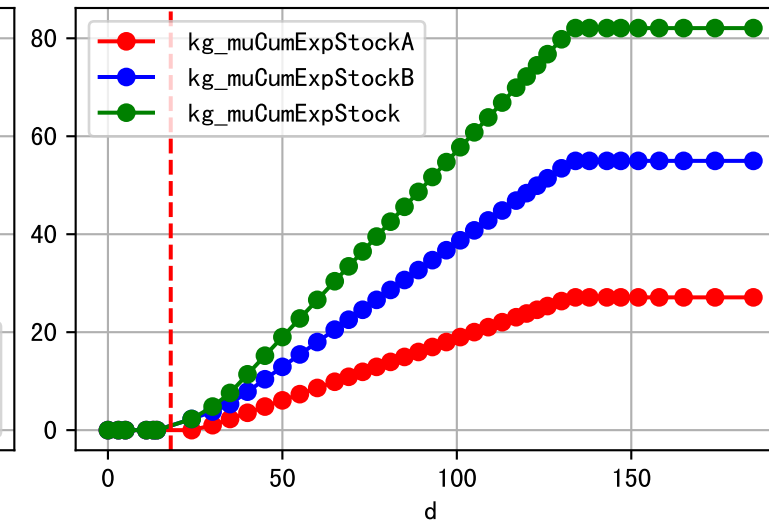
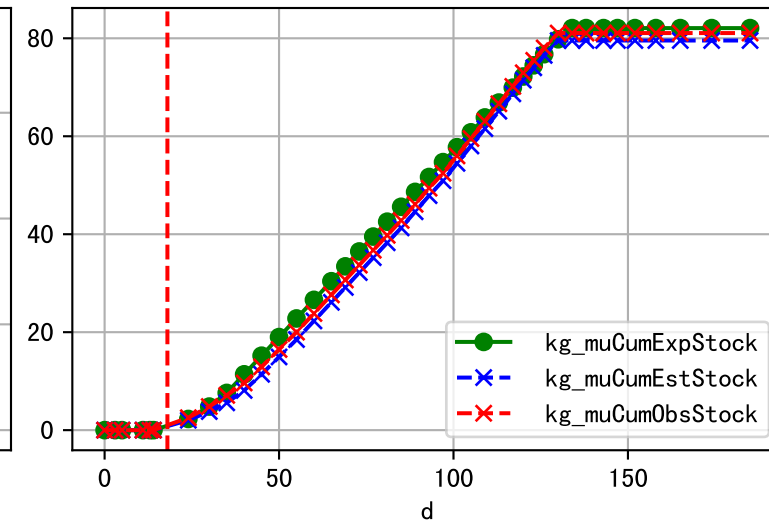
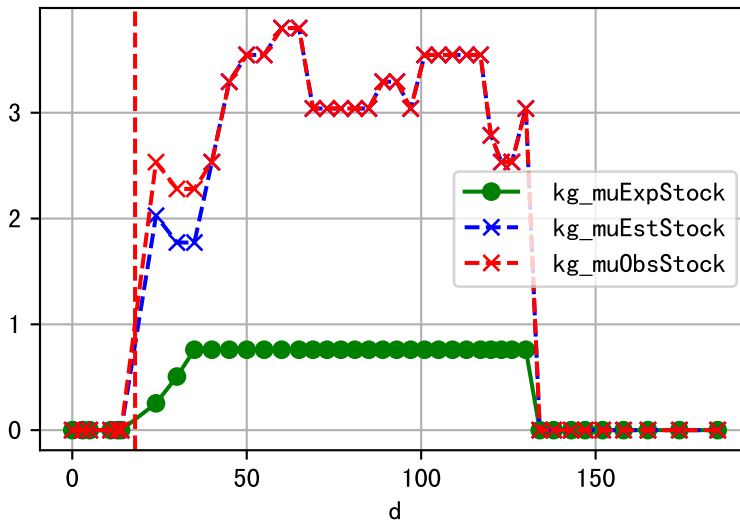
Fg Trigger Score (by Et and sensor)



Plot liquid fertilizer usage



Plot solid fertilizer (kg/mu) usage



Fertilizer Range Source: kerleyL, kerleyH, UnivFL, TNAI, Haifa

