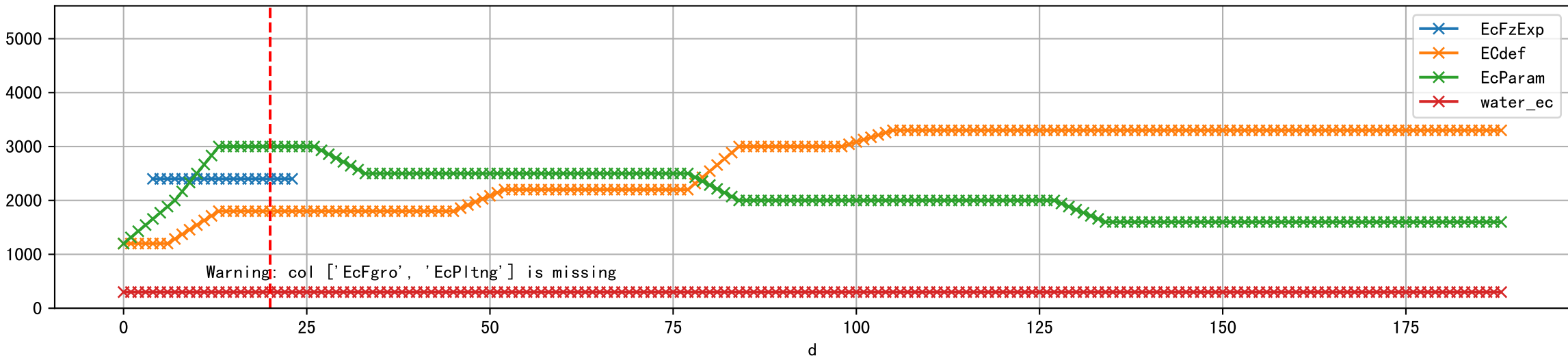
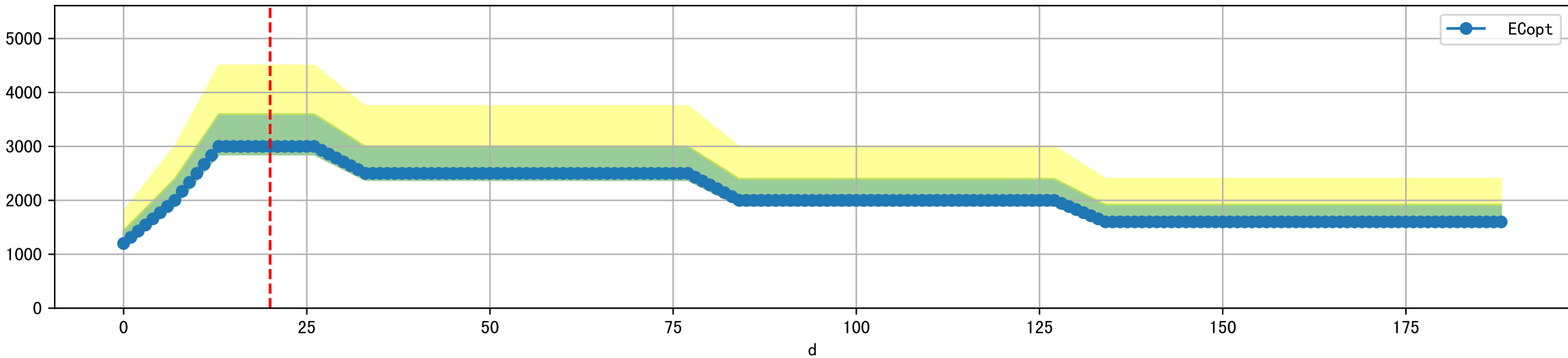


FgArea: [' 0' ]  
NC11 P3-17  
2025-11-13 (Day 20)

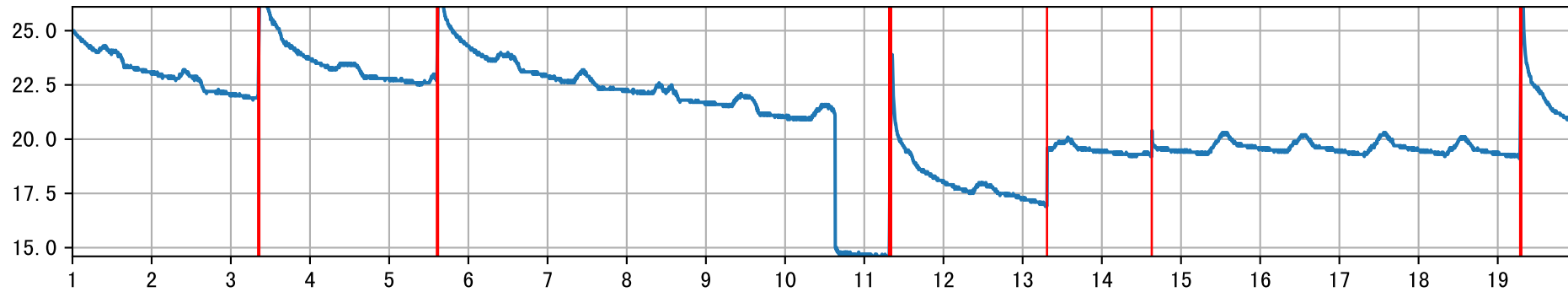
Plot [['EcFgro', 'EcFzExp', 'EcPltng', 'ECdef', 'EcParam', 'water\_ec']]



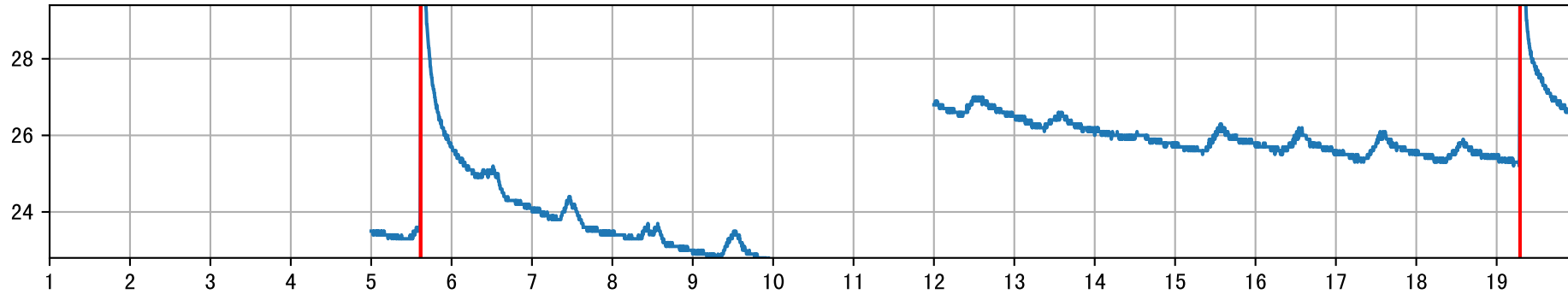
Plot [' ECopt ']



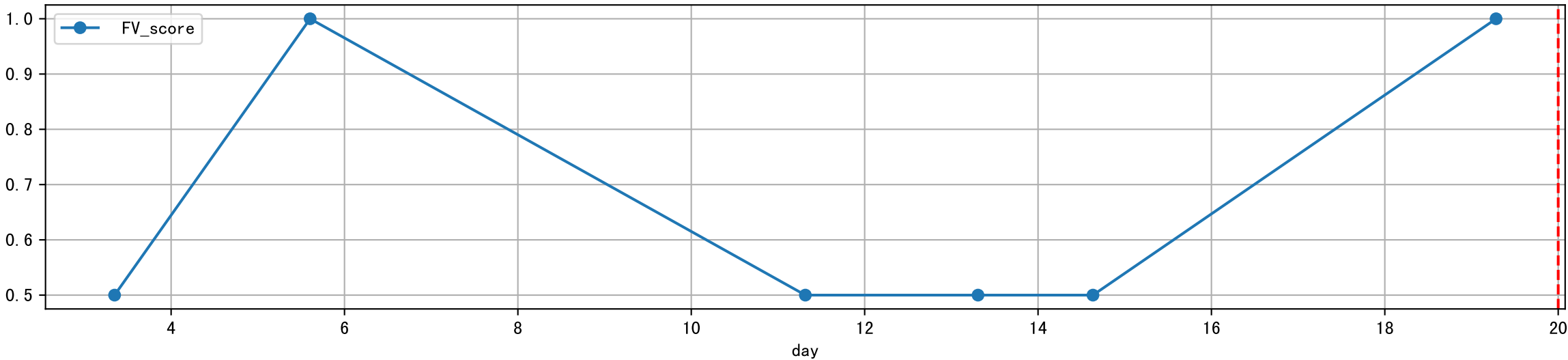
P3-17\_0: M\_E



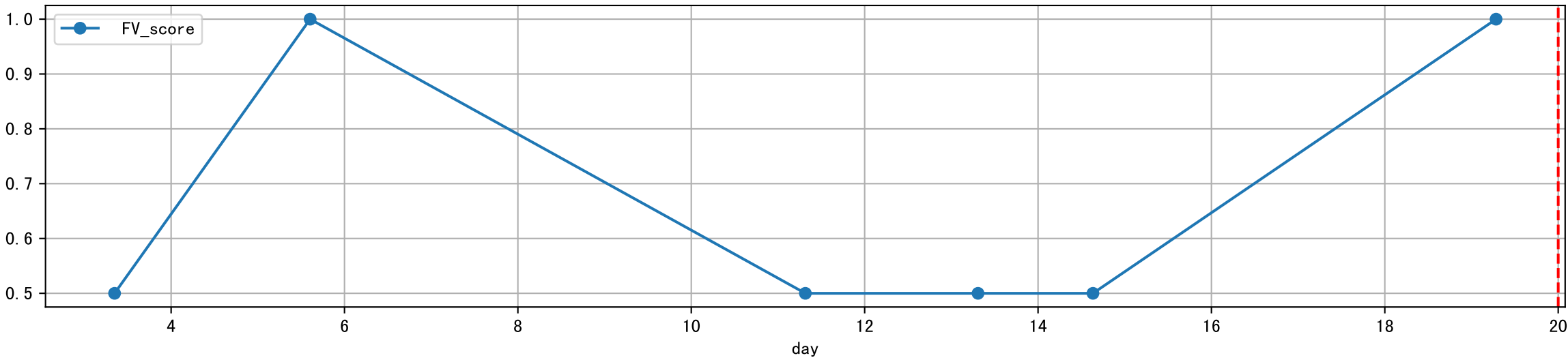
P3-17\_0: M\_W

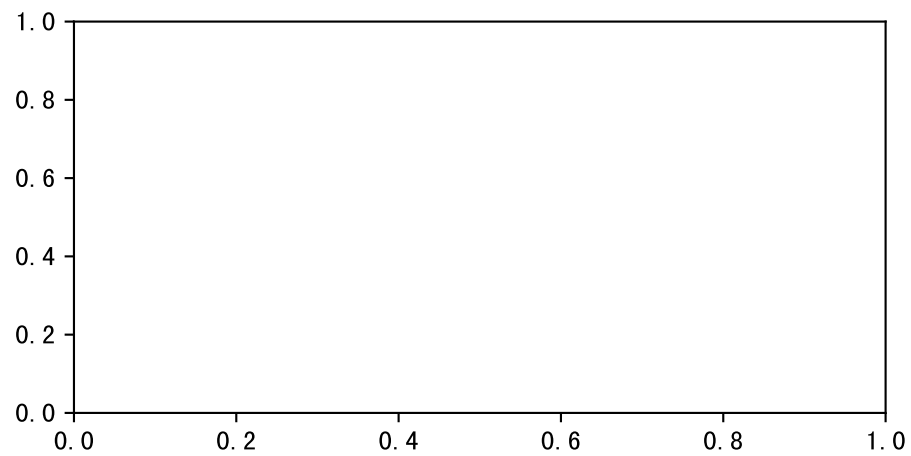
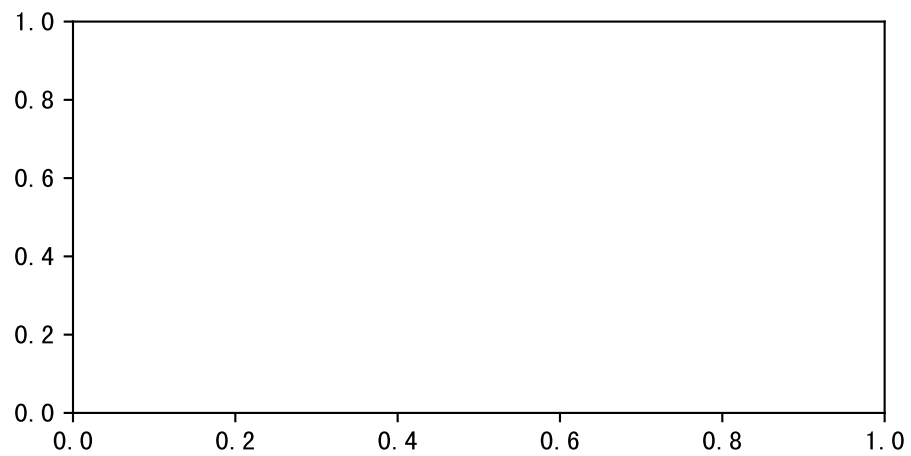
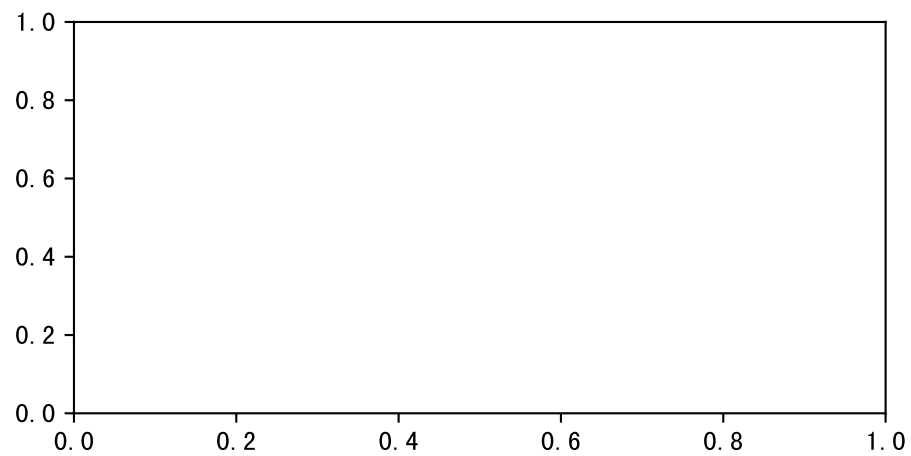
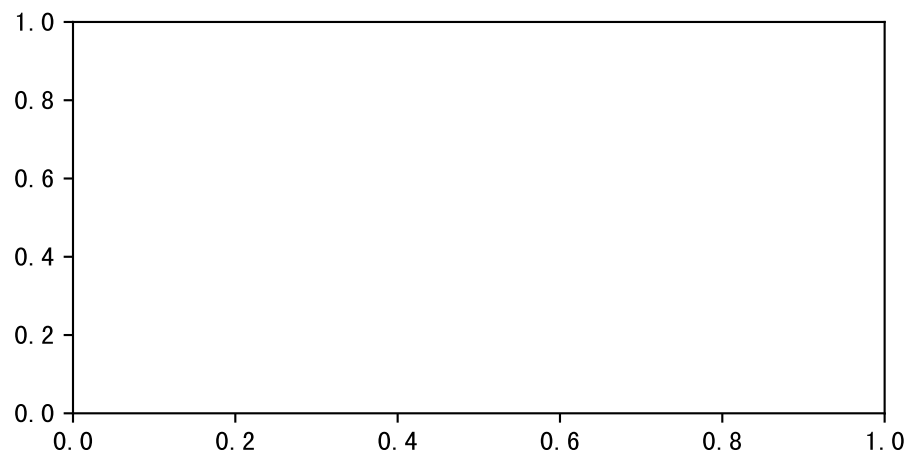
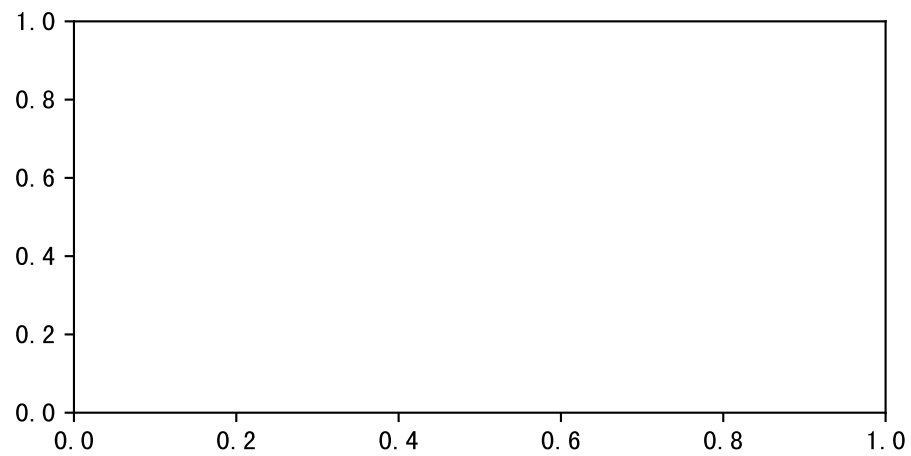
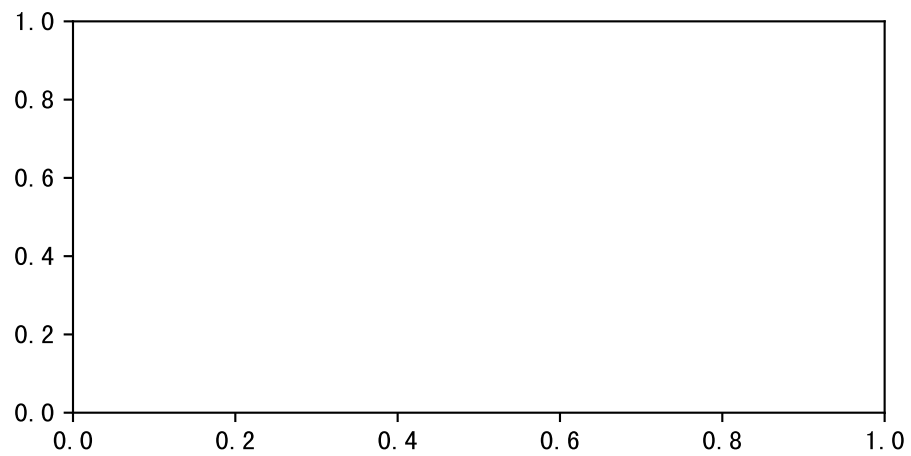


plot dfFv

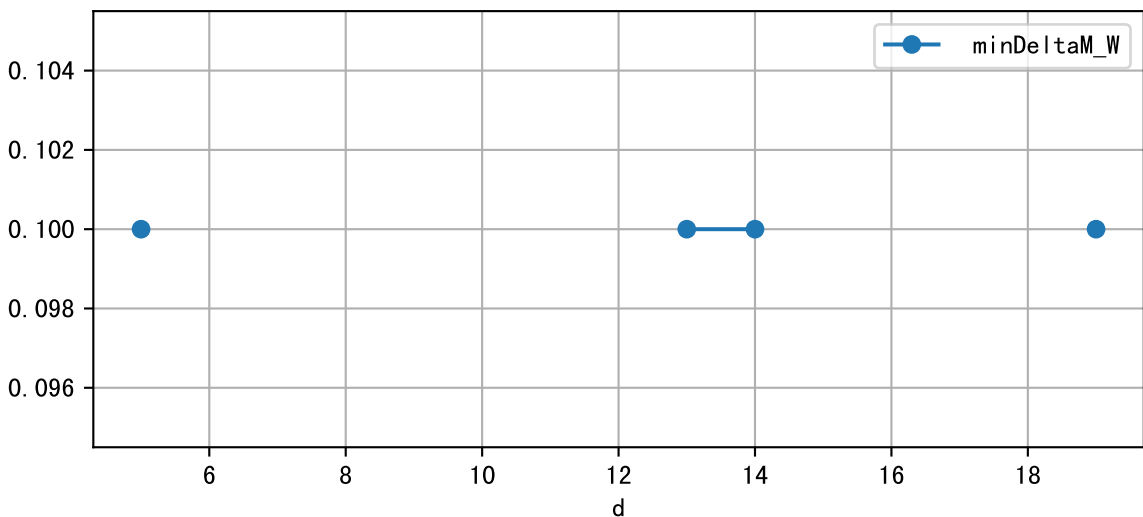


plot dfFv (daily Agg)

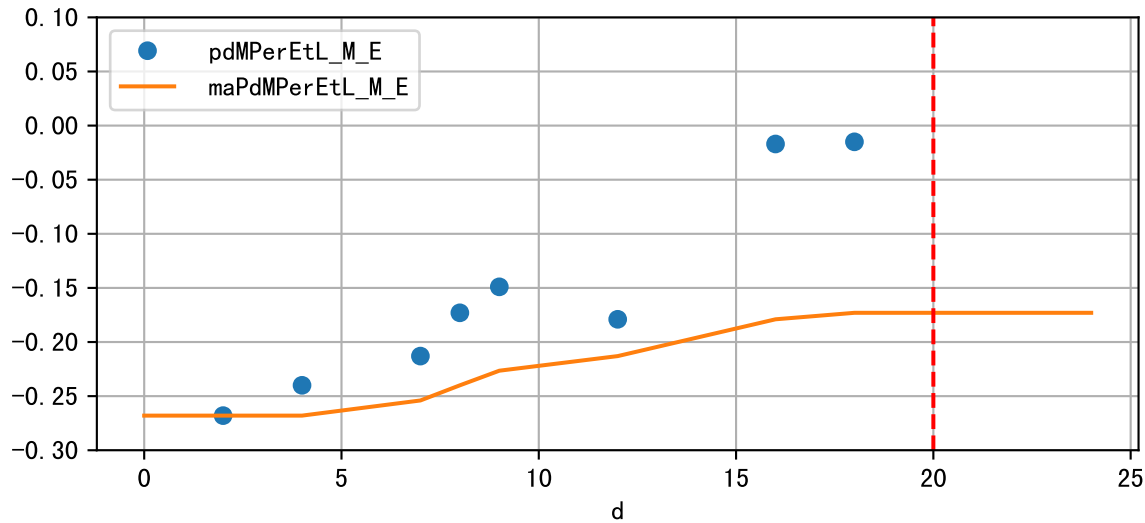
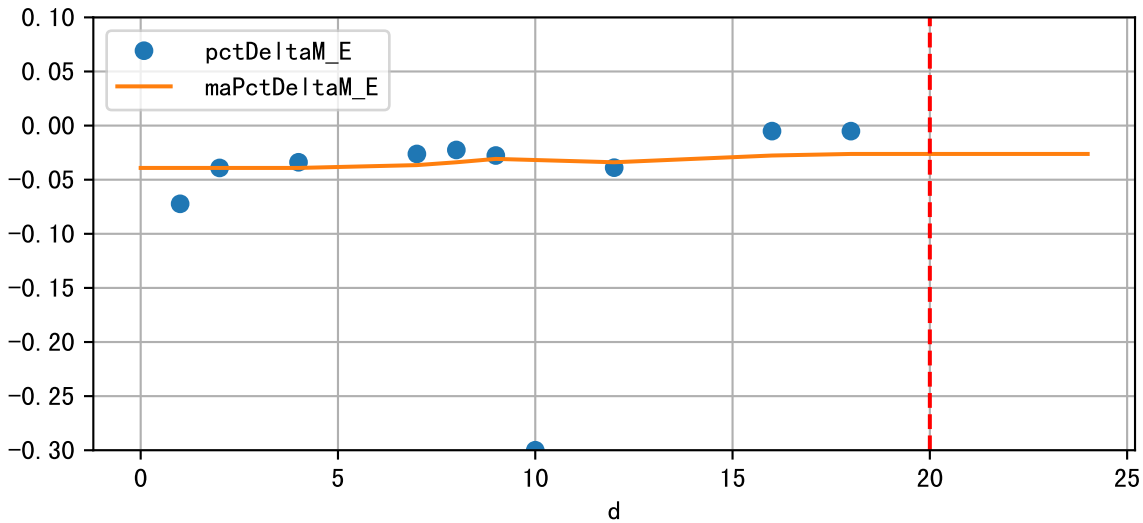




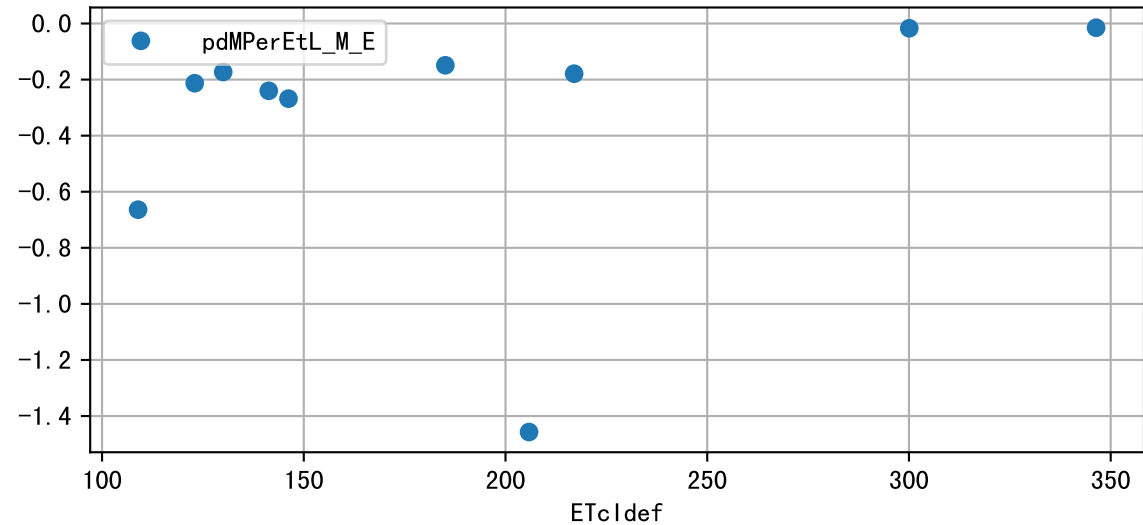
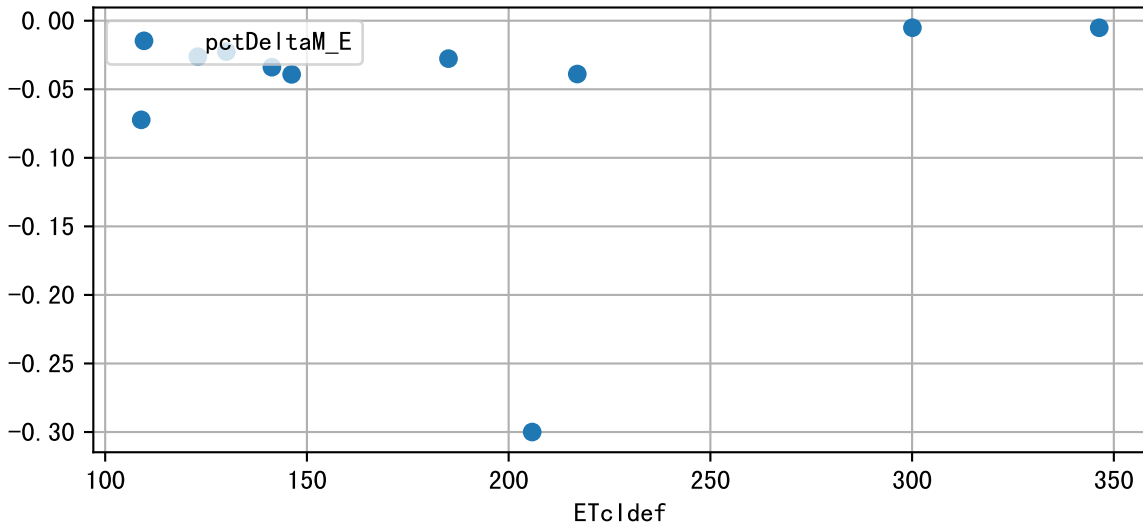
Plot minDeltaM, minDeltaMs, minDeltaMt



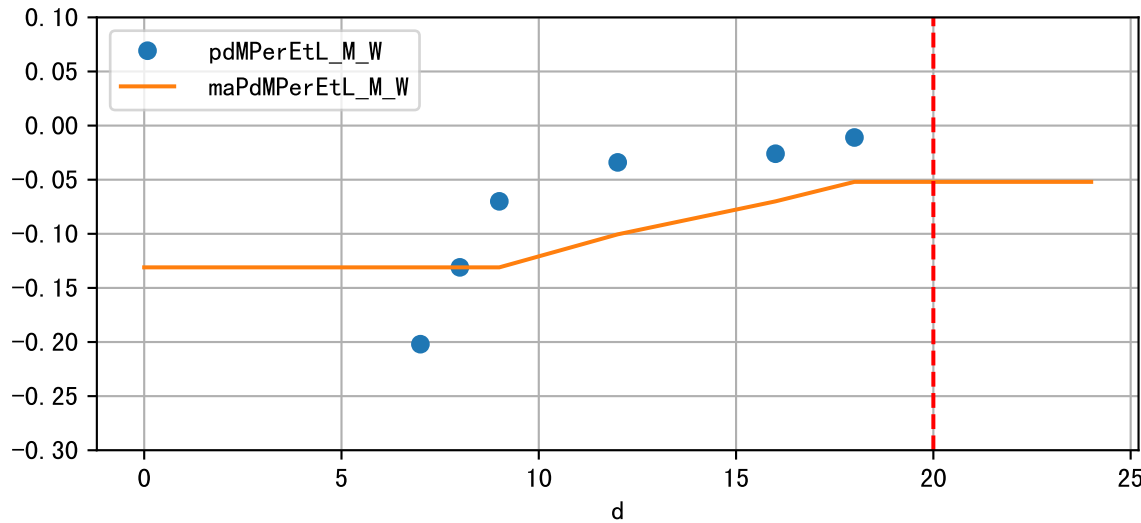
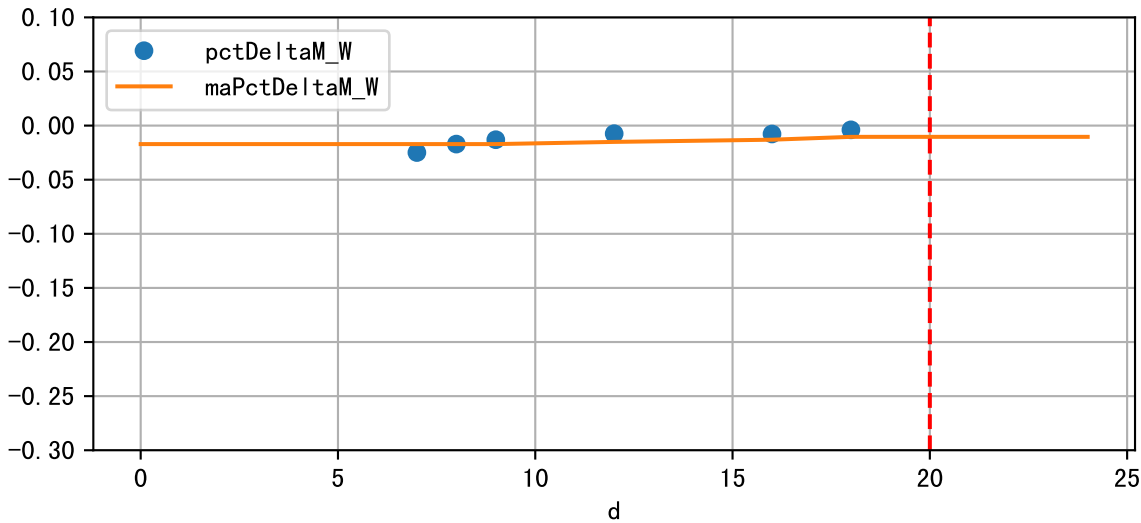
Daily %DeltaM and %DeltaM/1000ml ETcIdef for M\_E (-2.6%/D, -17.3%/1000ml ET)



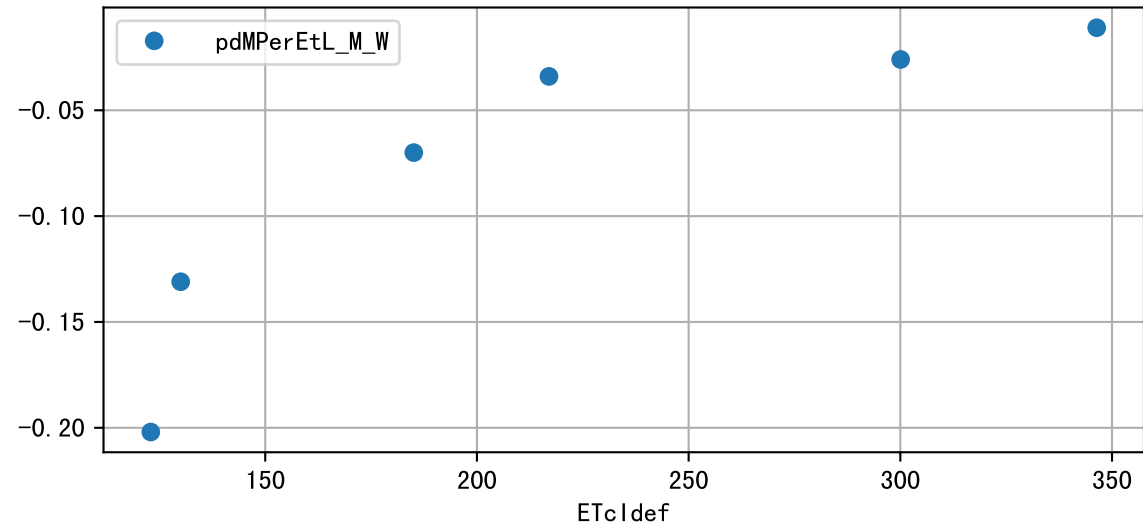
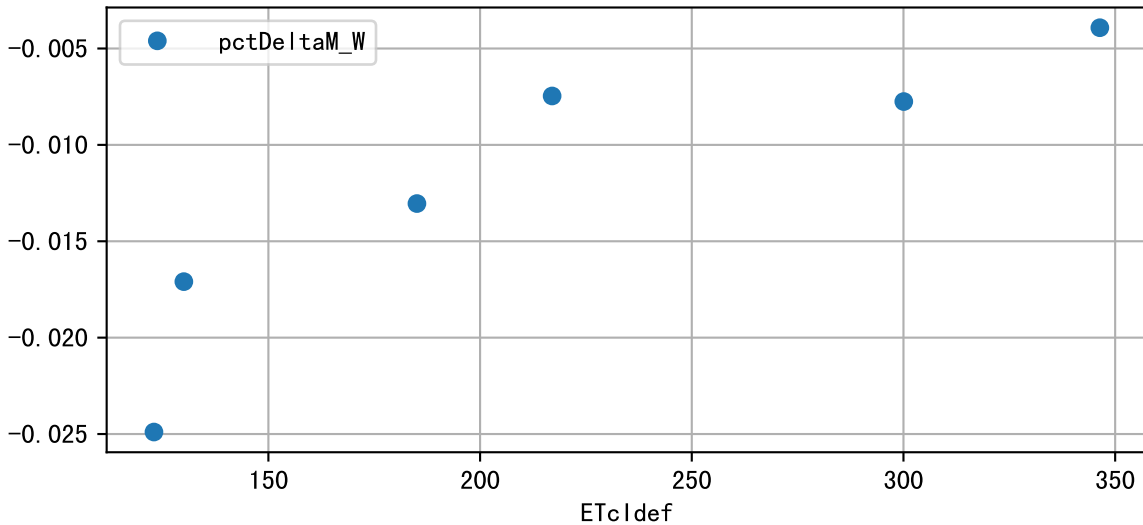
ETcldef vs pctDeltaM and pdMPerEtL for M\_E



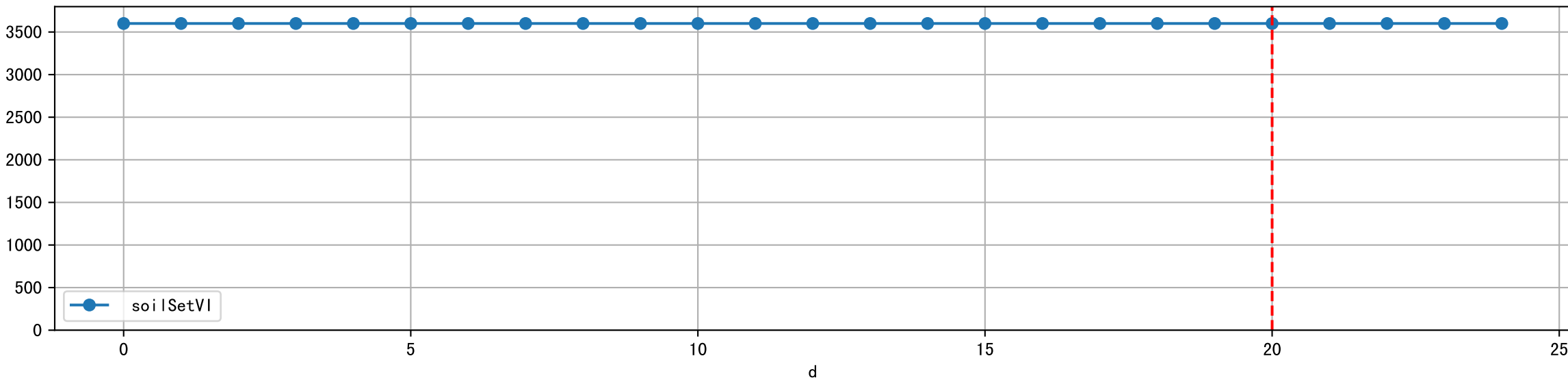
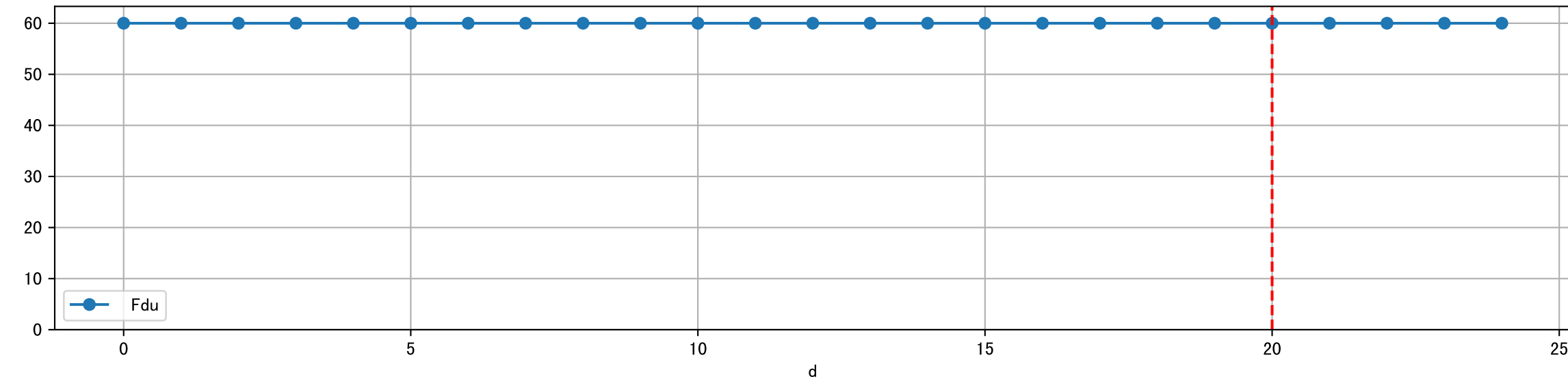
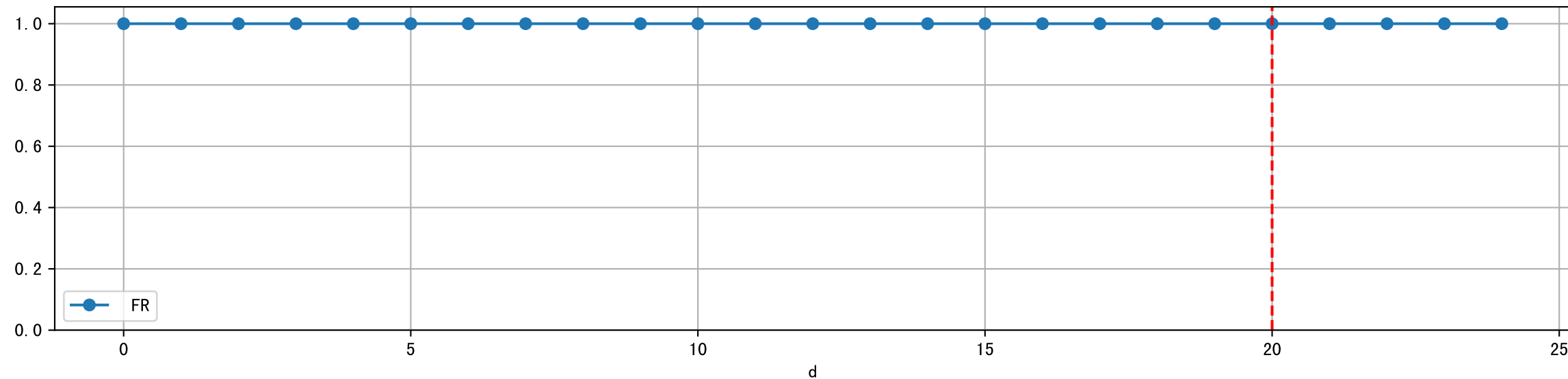
Daily %DeltaM and %DeltaM/1000ml ETcIdef for M\_W (-1.0%/D, -5.2%/1000ml ET)



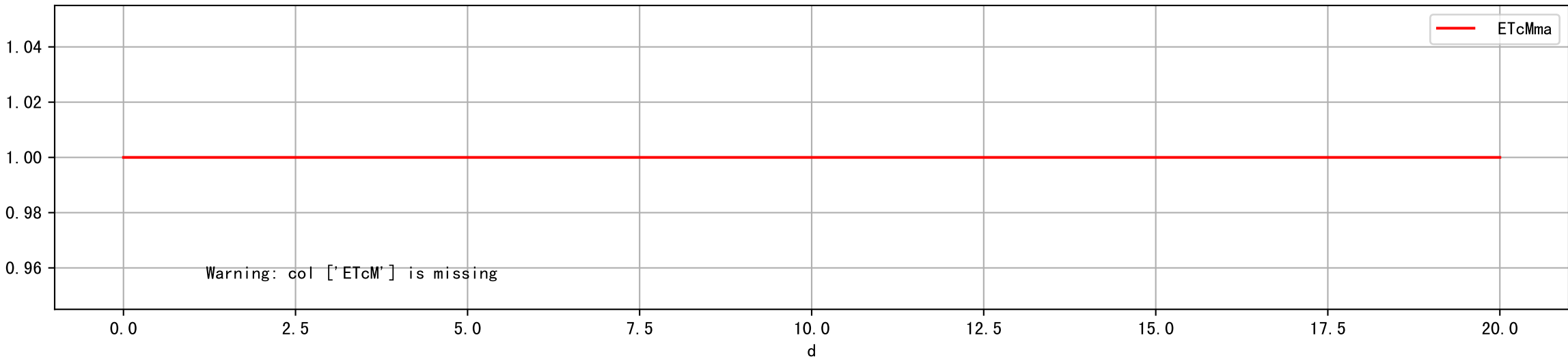
ETcldef vs pctDeltaM and pdMPerEtL for M\_W

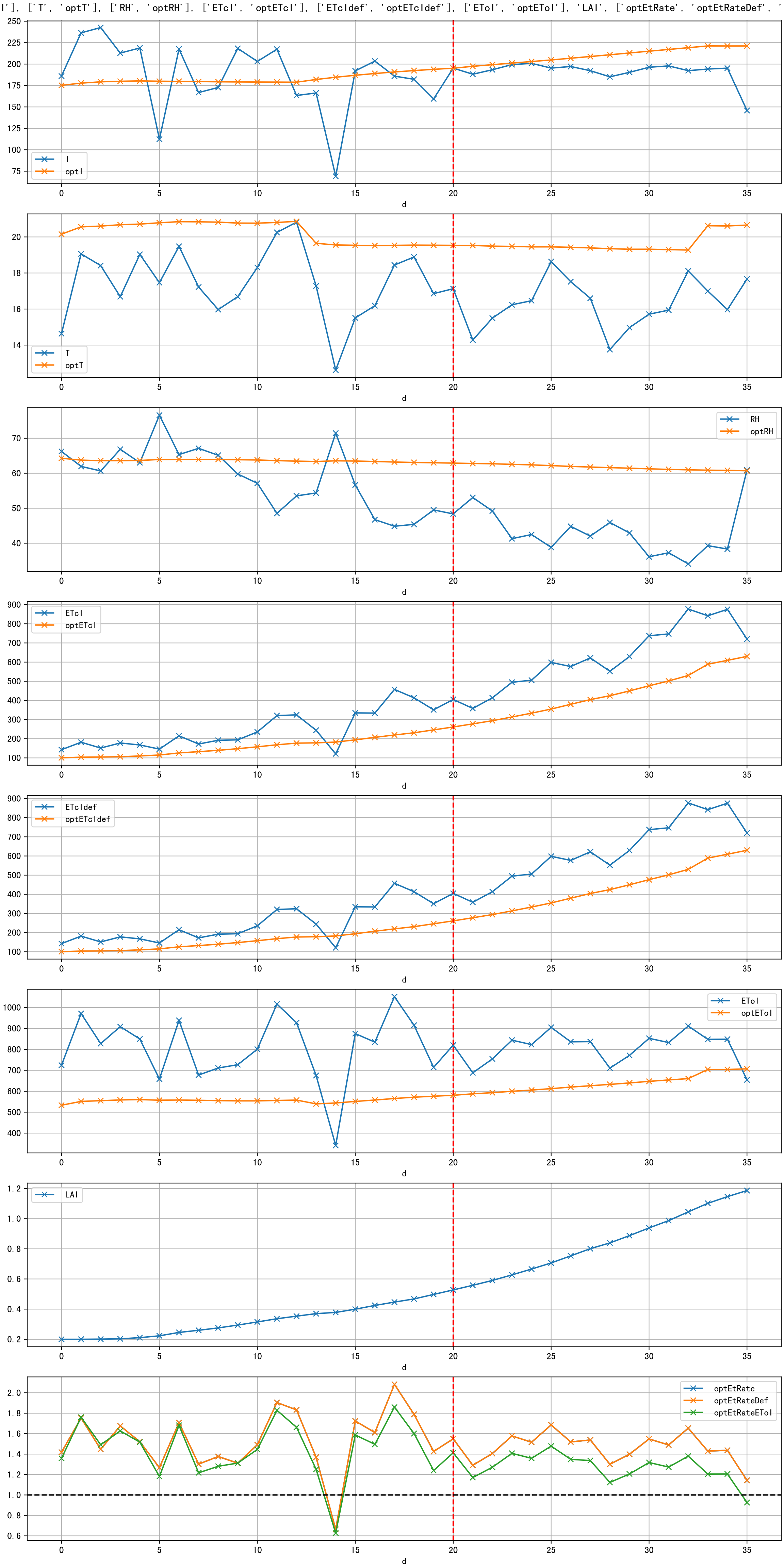


Plot ['FR', 'Fdu', 'soilSetVI']

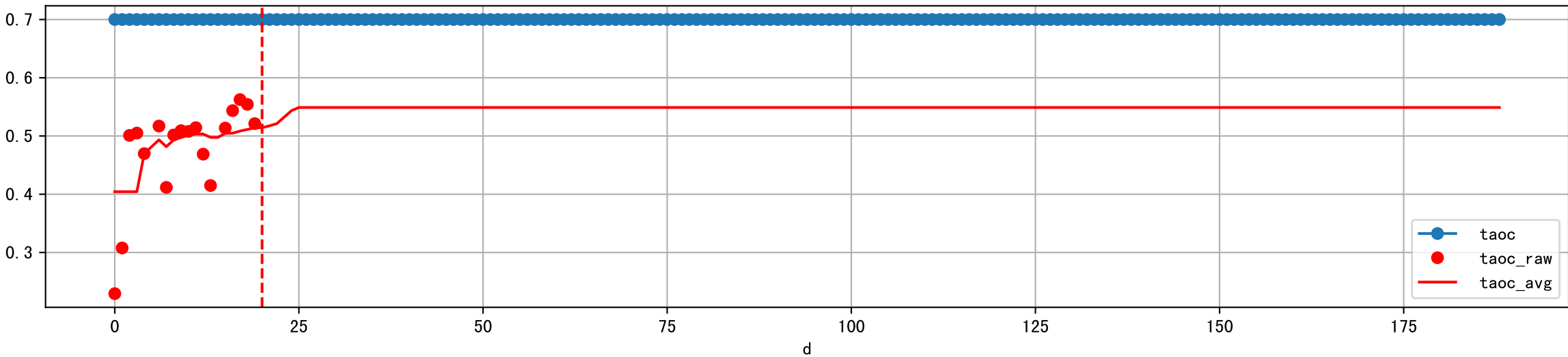


ETcM and ETcMma

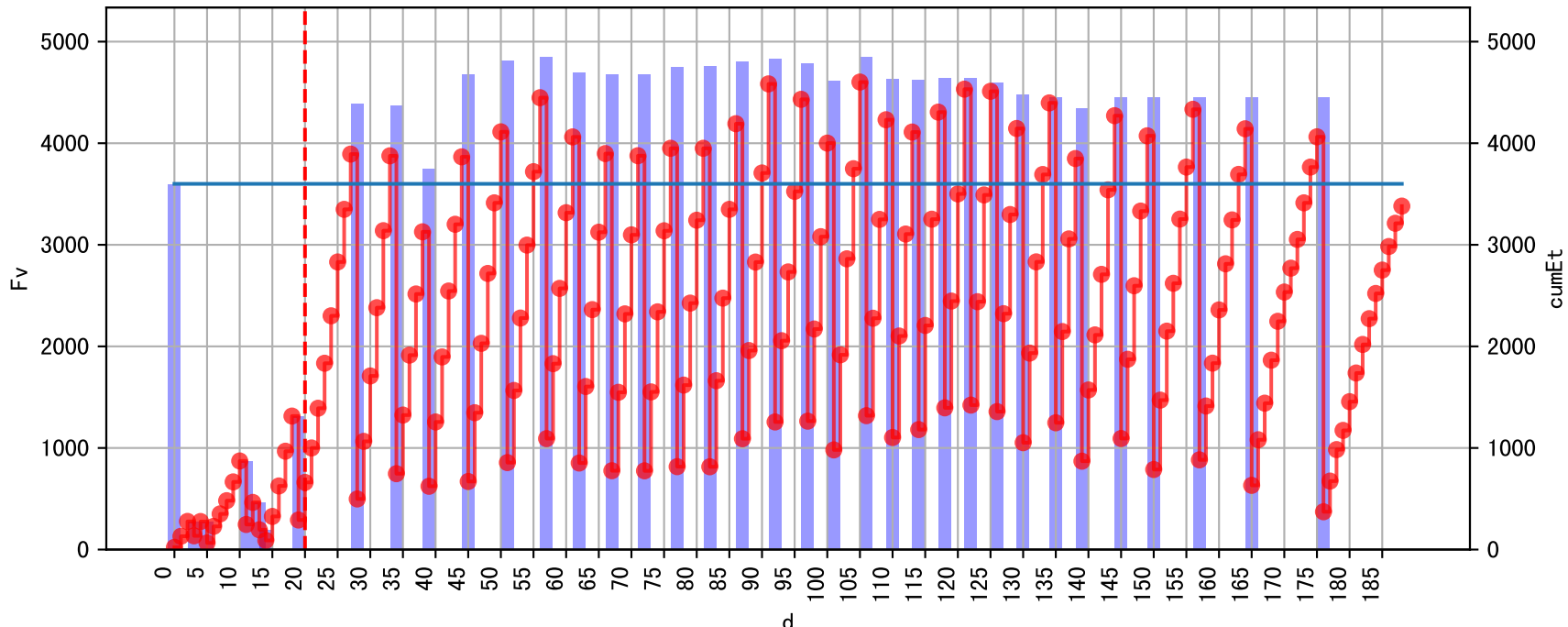


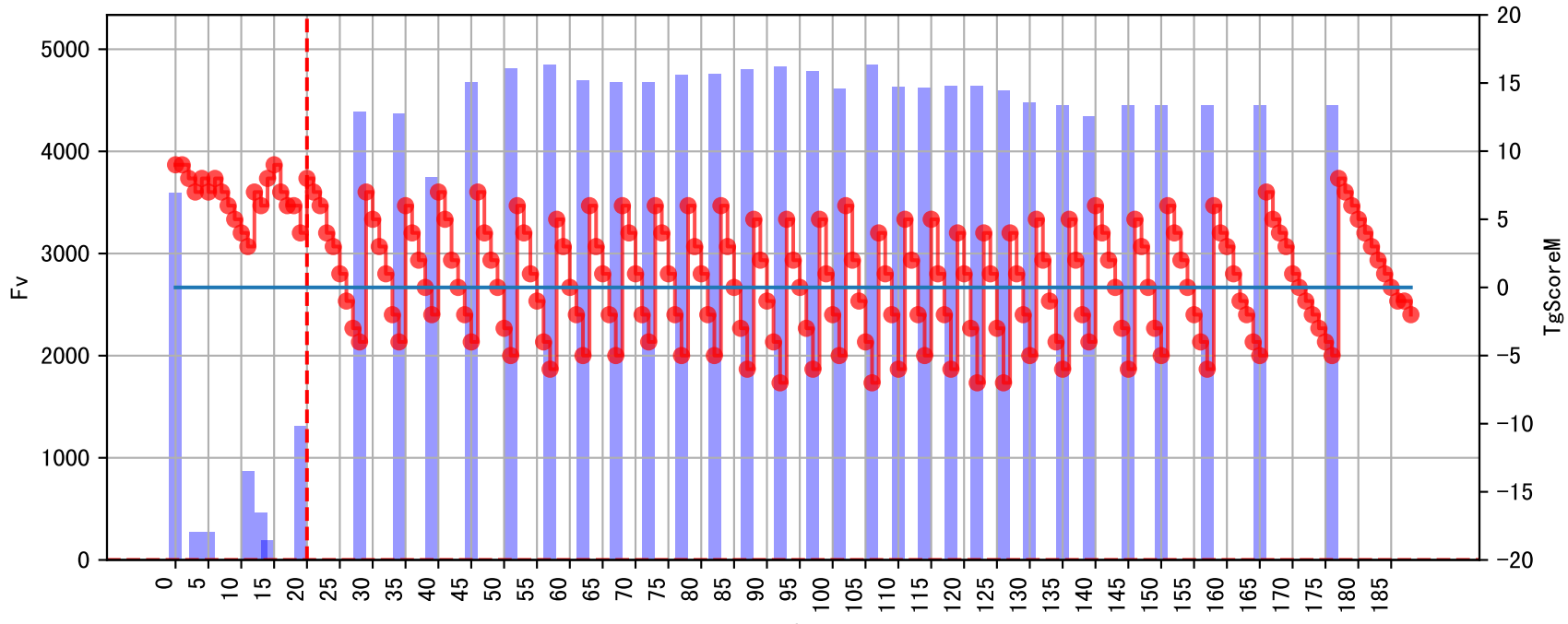


Plot [['taoc', 'taoc\_raw:ro', 'taoc\_avg:r-']]

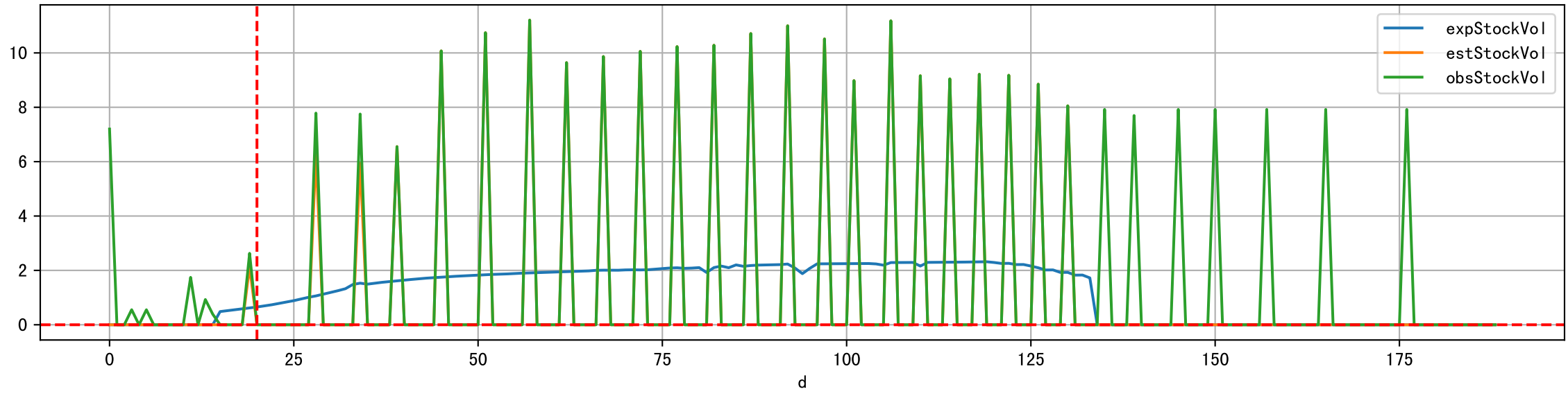
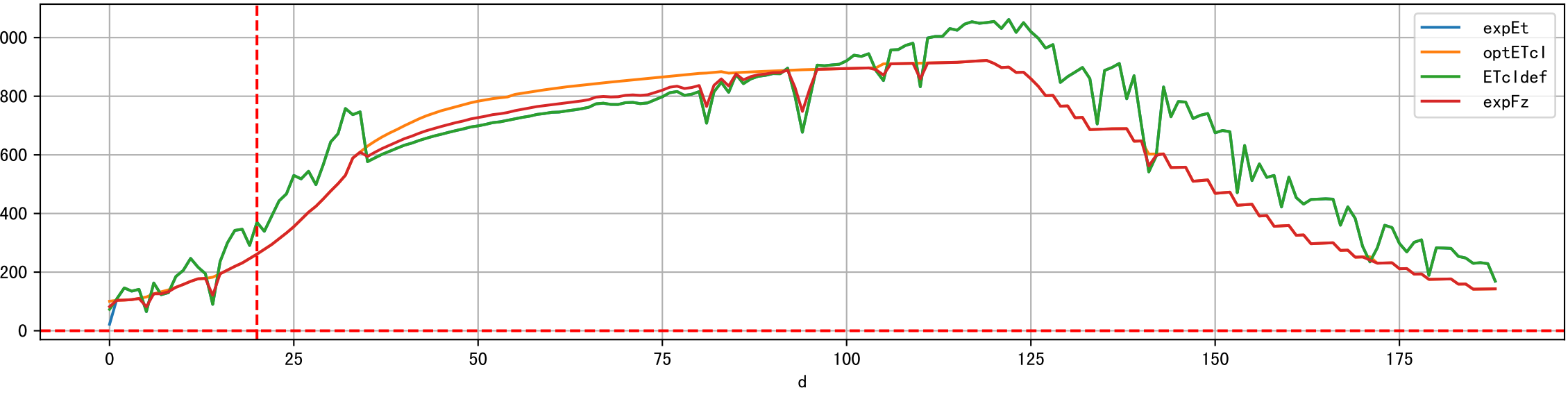
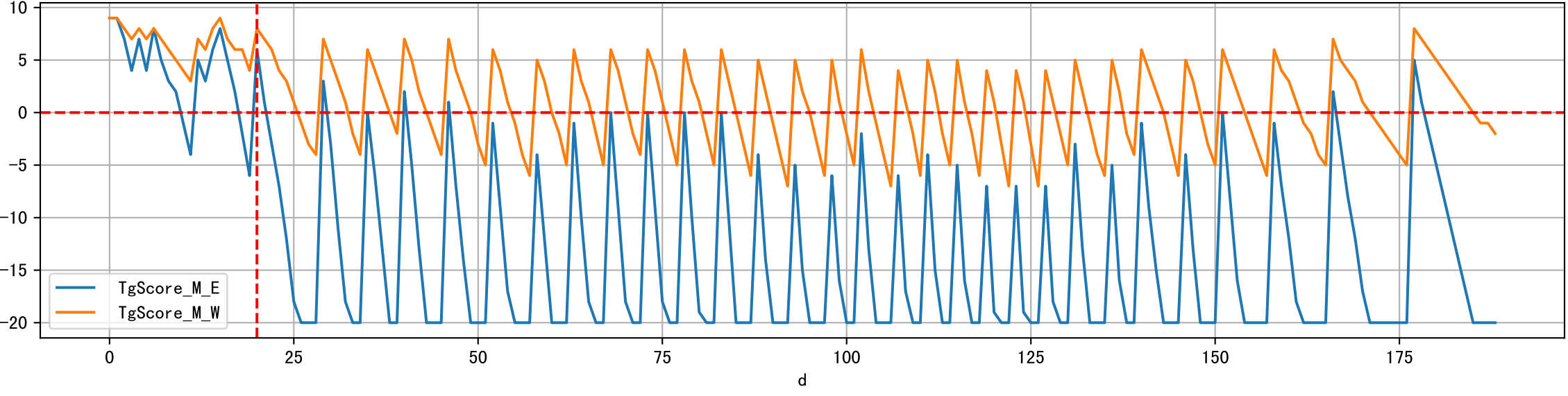
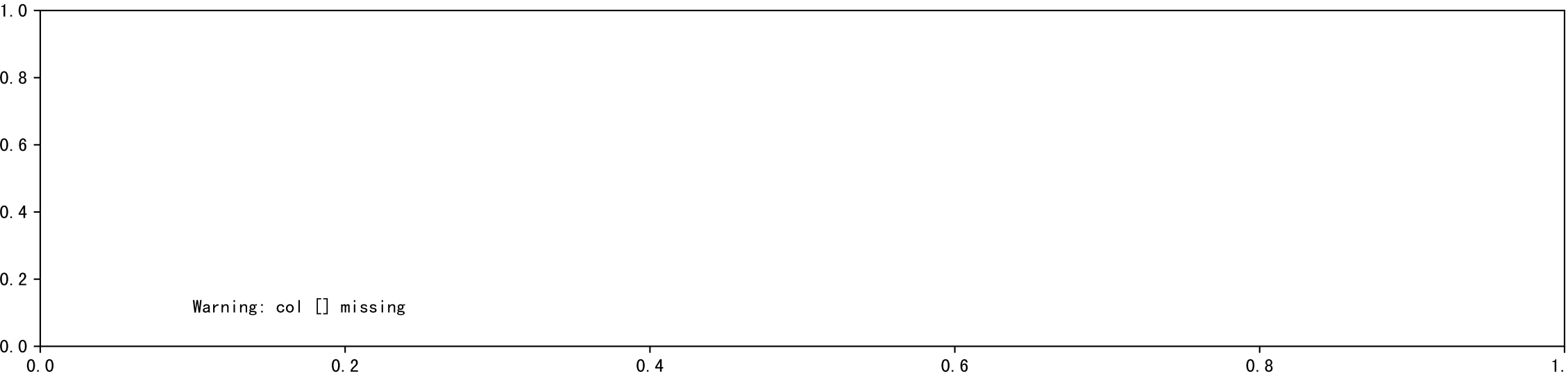
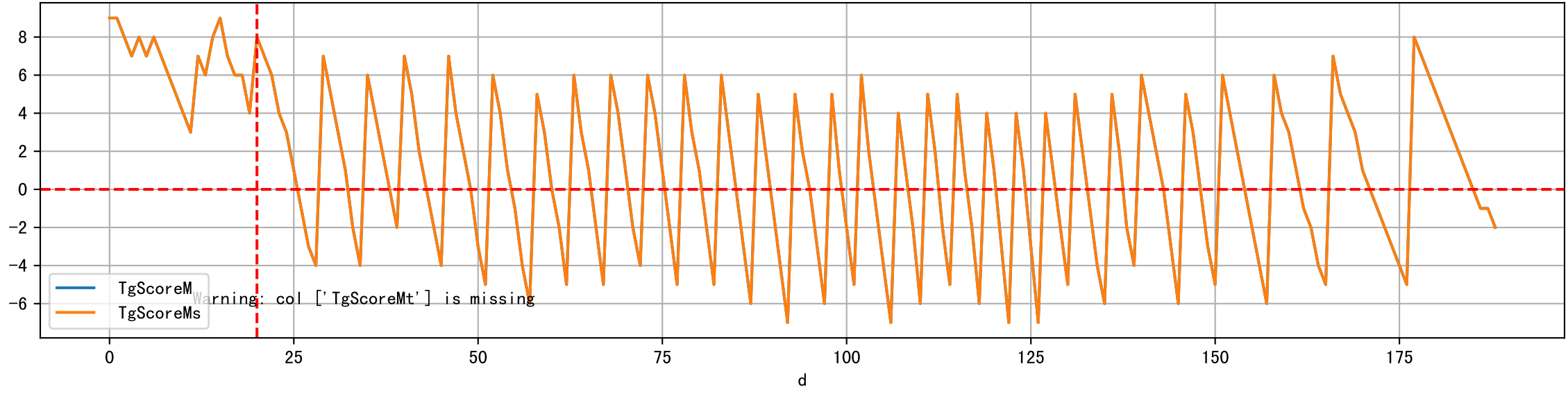
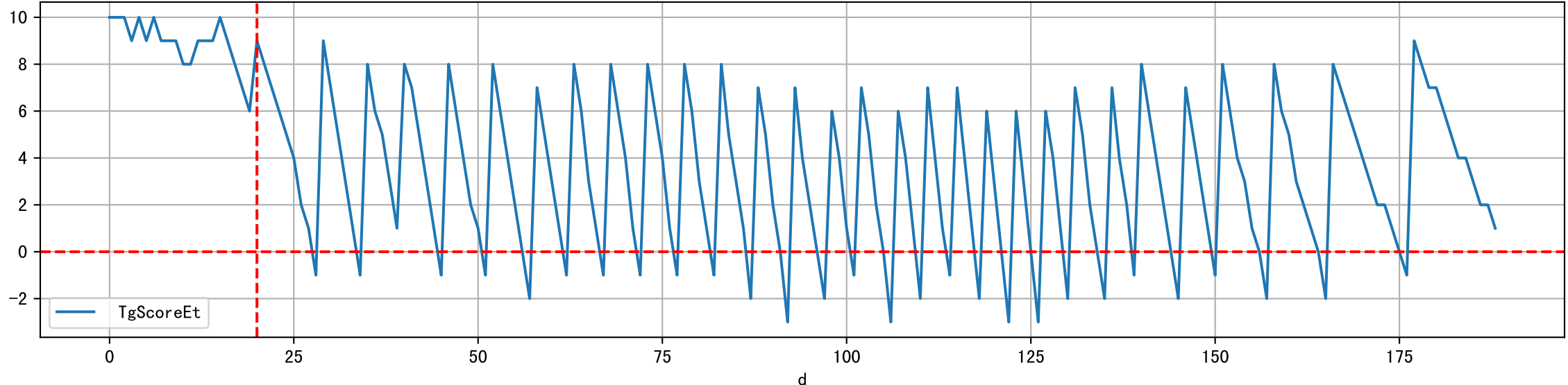


note	fz	fzStockID	expFDF	expEC	preDu	f
假设有灌溉, 有检测无记录未预期, 灌溉信息缺失(假设标准肥按需灌溉)	清水	NA	500.0	300.0	0.0	11
假设有灌溉, 有检测无记录未预期, 灌溉信息缺失(假设标准肥按需灌溉)	清水	NA	500.0	300.0	0.0	6
假设有灌溉, 有检测无记录未预期, 灌溉信息缺失(假设标准肥按需灌溉)	清水	NA	500.0	300.0	0.0	2
假设有灌溉, 有检测无记录未预期, 土壤肥已过量, 逐渐减肥	丰码有品苗期肥	NA	500.0	716.0	0.0	17
预期灌溉, 土壤肥已过量, 逐渐减肥	丰码有品苗期肥	1035	500.0	712.0	360.0	51
预期灌溉, 土壤肥已过量, 逐渐减肥	丰码有品果期肥	1035	500.0	711.0	360.0	51
预期灌溉	丰码有品果期肥	TBD	494.5	666.0	380.0	43

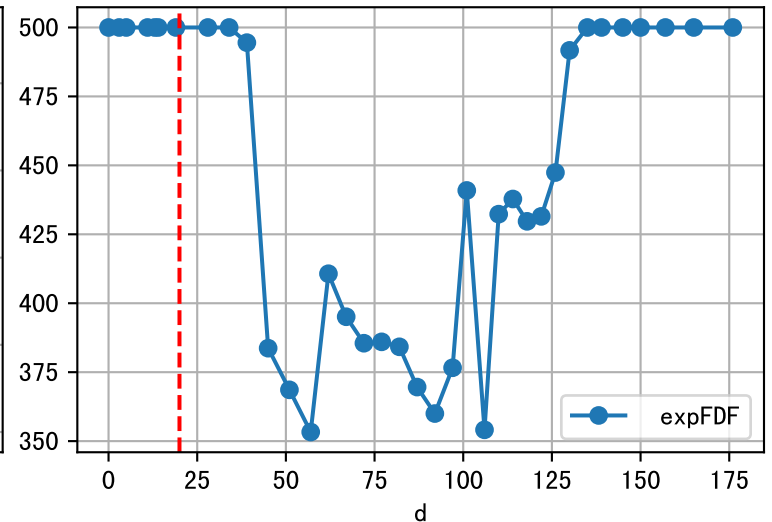
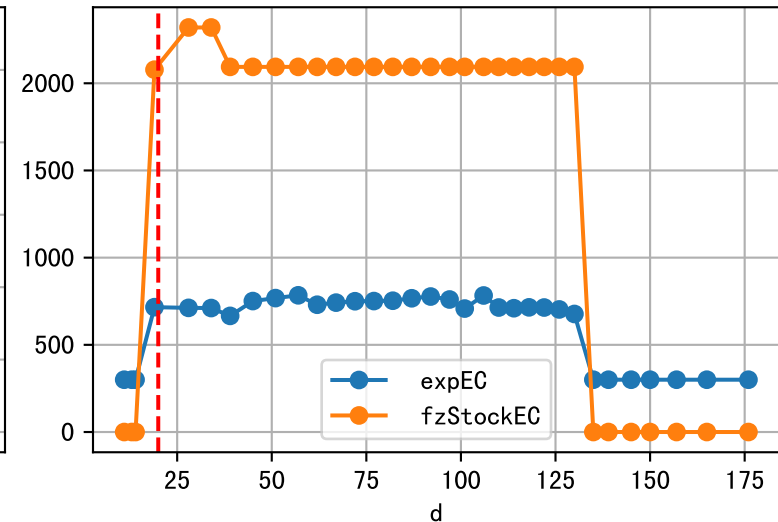
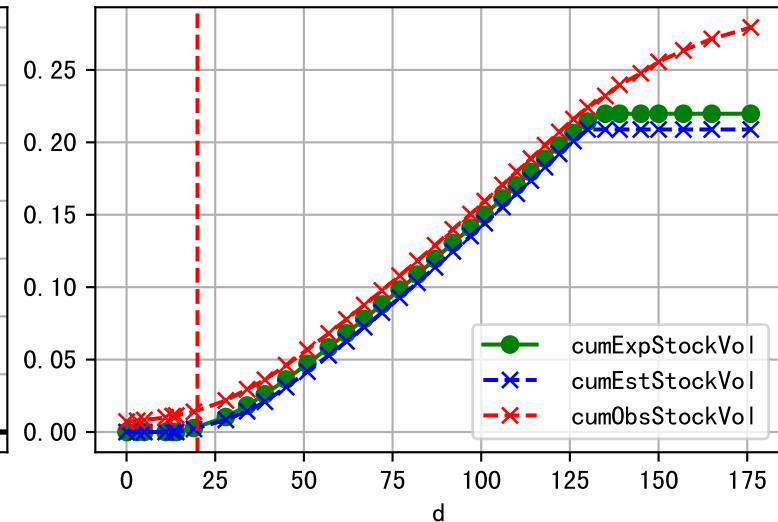
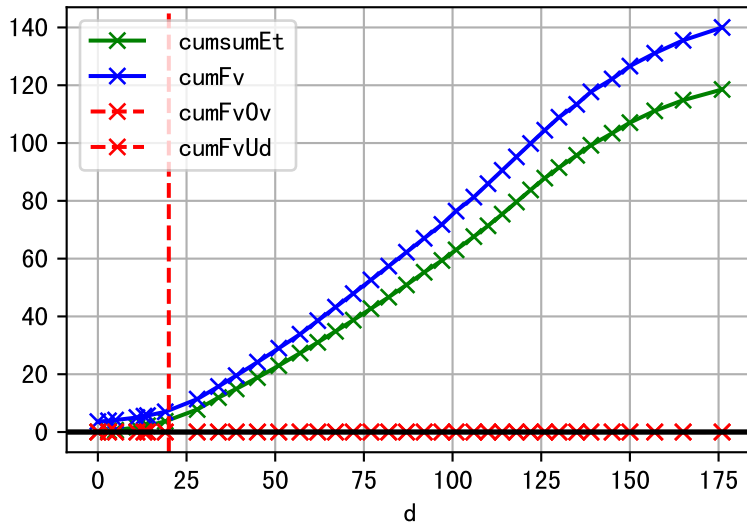




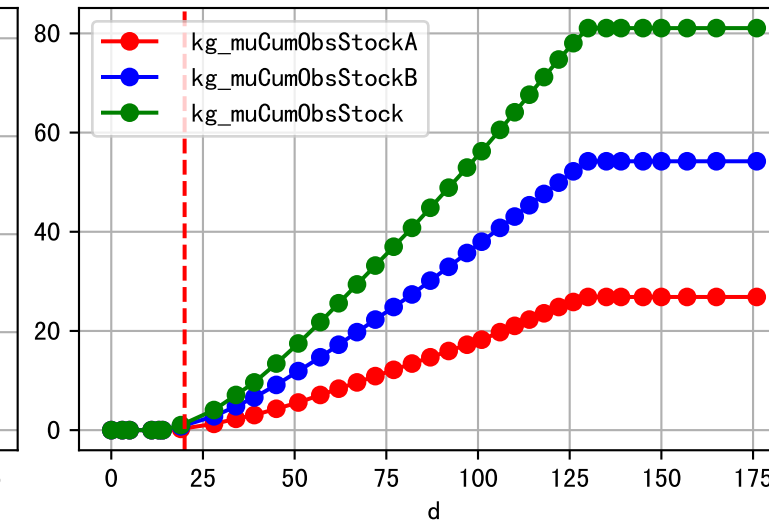
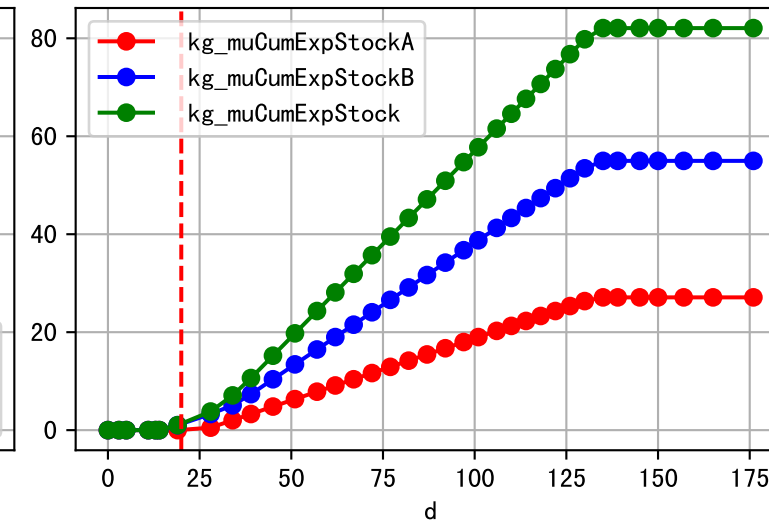
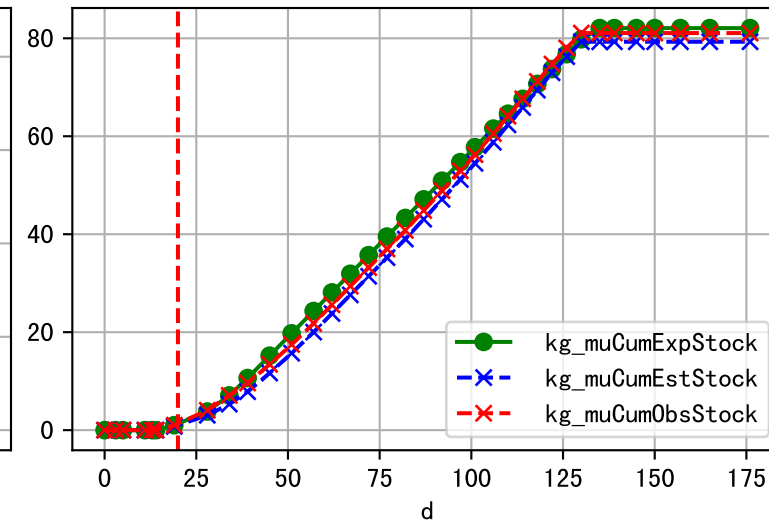
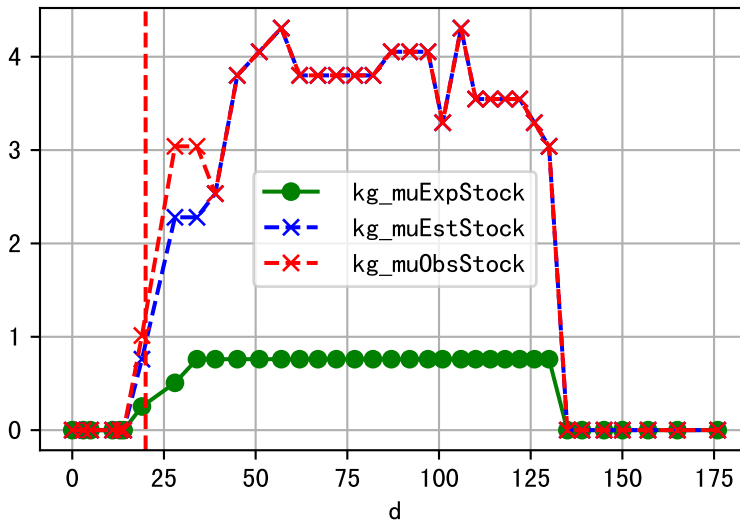
Fg Trigger Score (by Et and sensor)



Plot liquid fertilizer usage



Plot solid fertilizer (kg/mu) usage



Fertilizer Range Source: kerleyL, kerleyH, UnivFL, TNAI, Haifa

