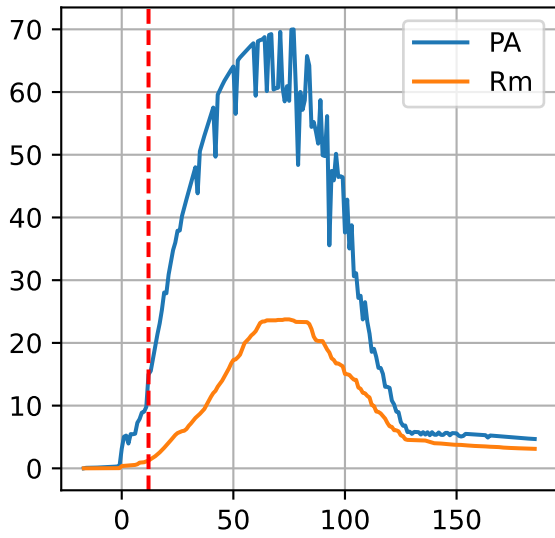
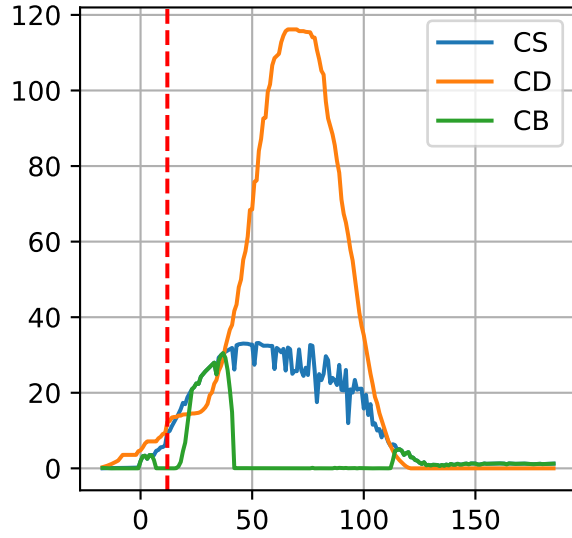


Model Prediction (P3-7)

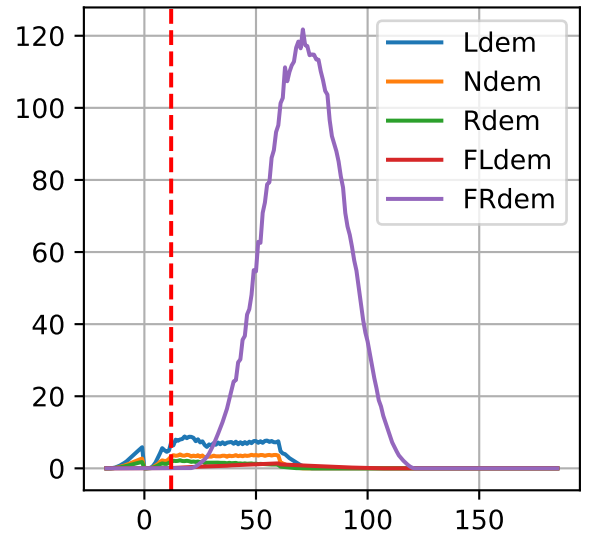
P3-7: ['PA', 'Rm']



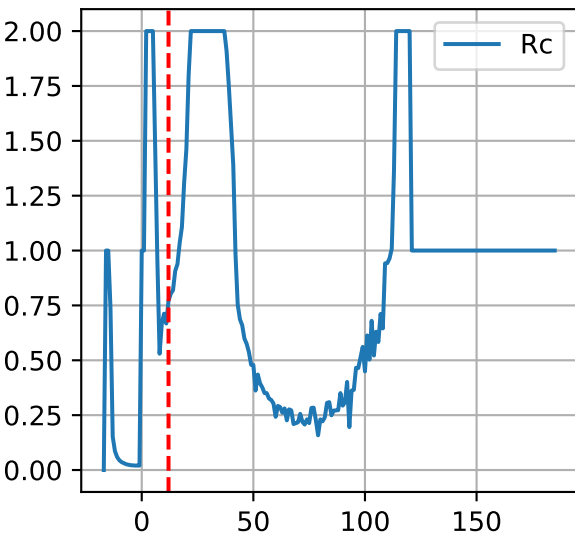
P3-7: ['CS', 'CD', 'CB']



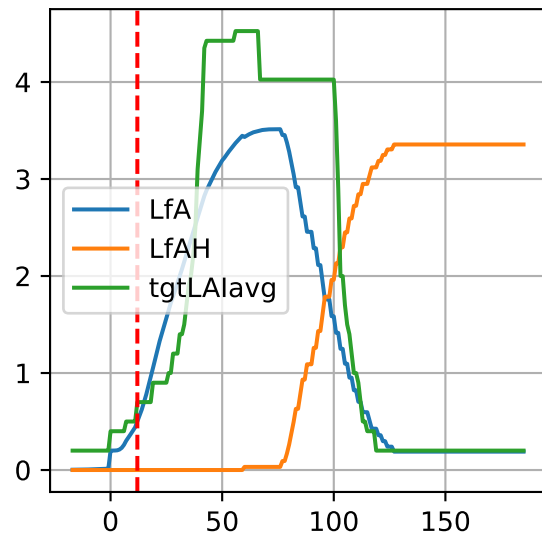
P3-7: ['Ldem', 'Ndem', 'Rdem', 'FLdem', 'FRdem']



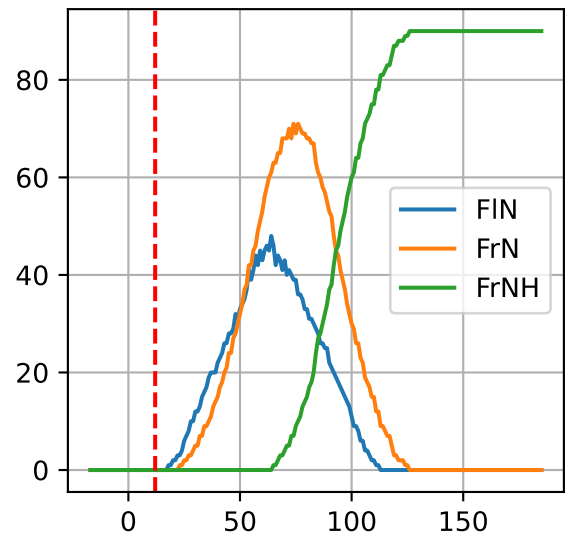
P3-7: ['Rc']



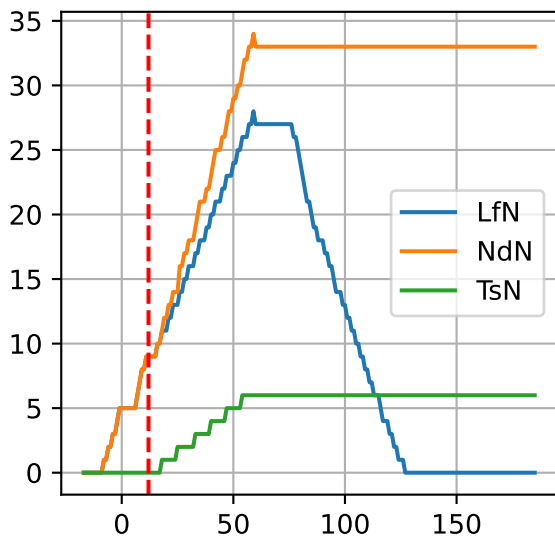
P3-7: ['LfA', 'LfAH', 'tgtLAlavg']



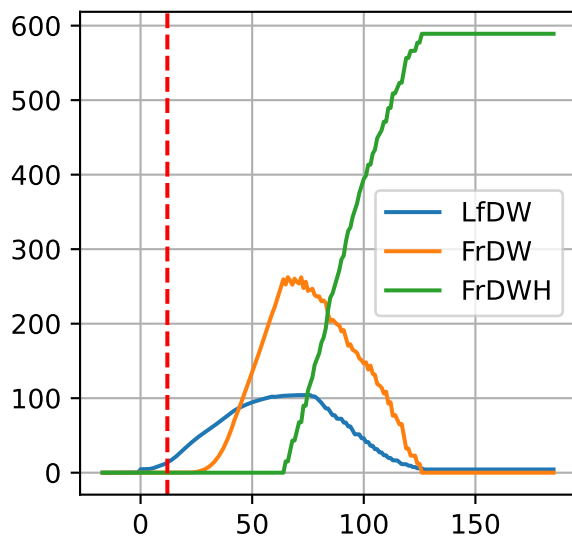
P3-7: ['FIN', 'FrN', 'FrNH']



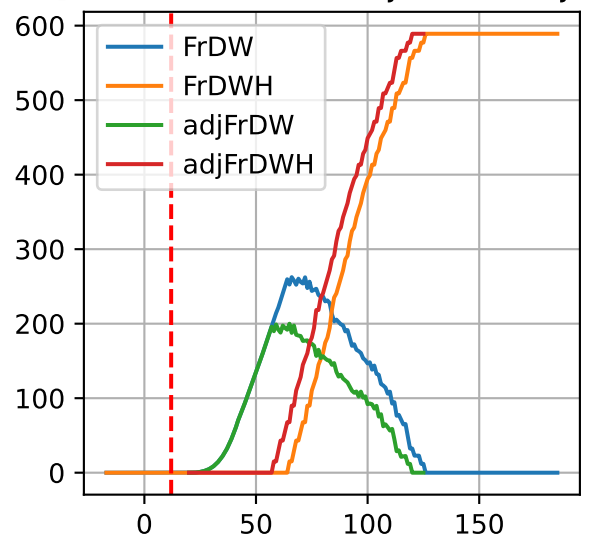
P3-7: ['LfN', 'NdN', 'TsN']



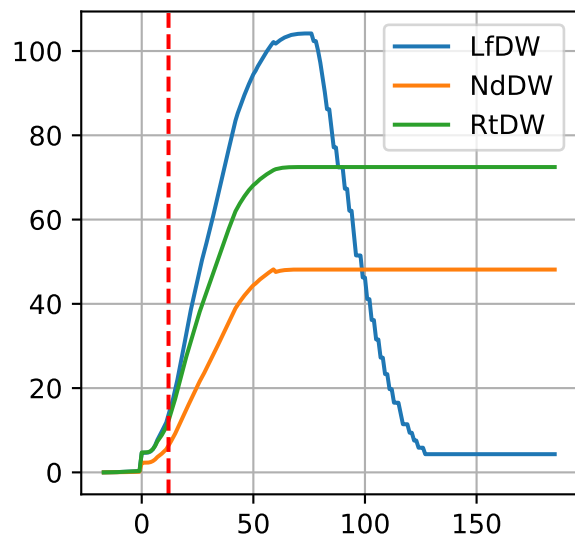
P3-7: ['LfDW', 'FrDW', 'FrDWH']



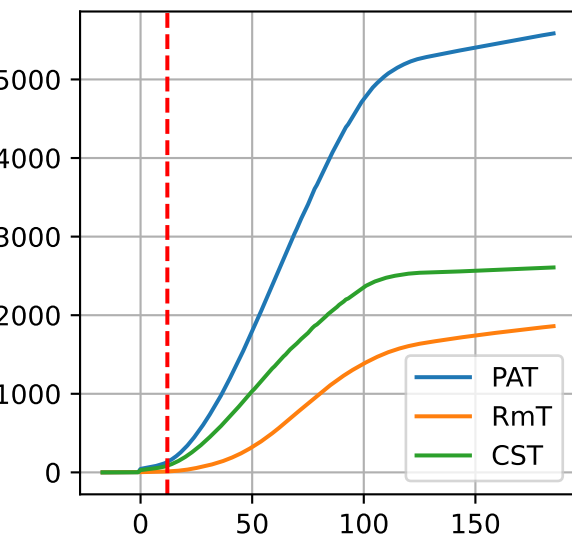
P3-7: ['FrDW', 'FrDWH', 'adjFrDW', 'adjFrDWH']



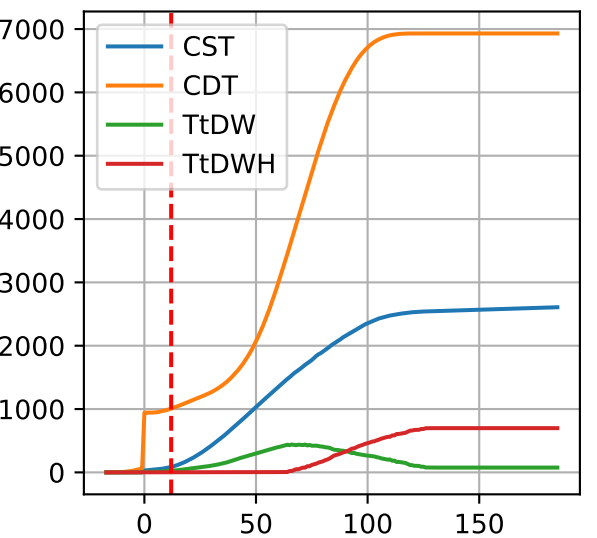
P3-7: ['LfDW', 'NdDW', 'RtDW']



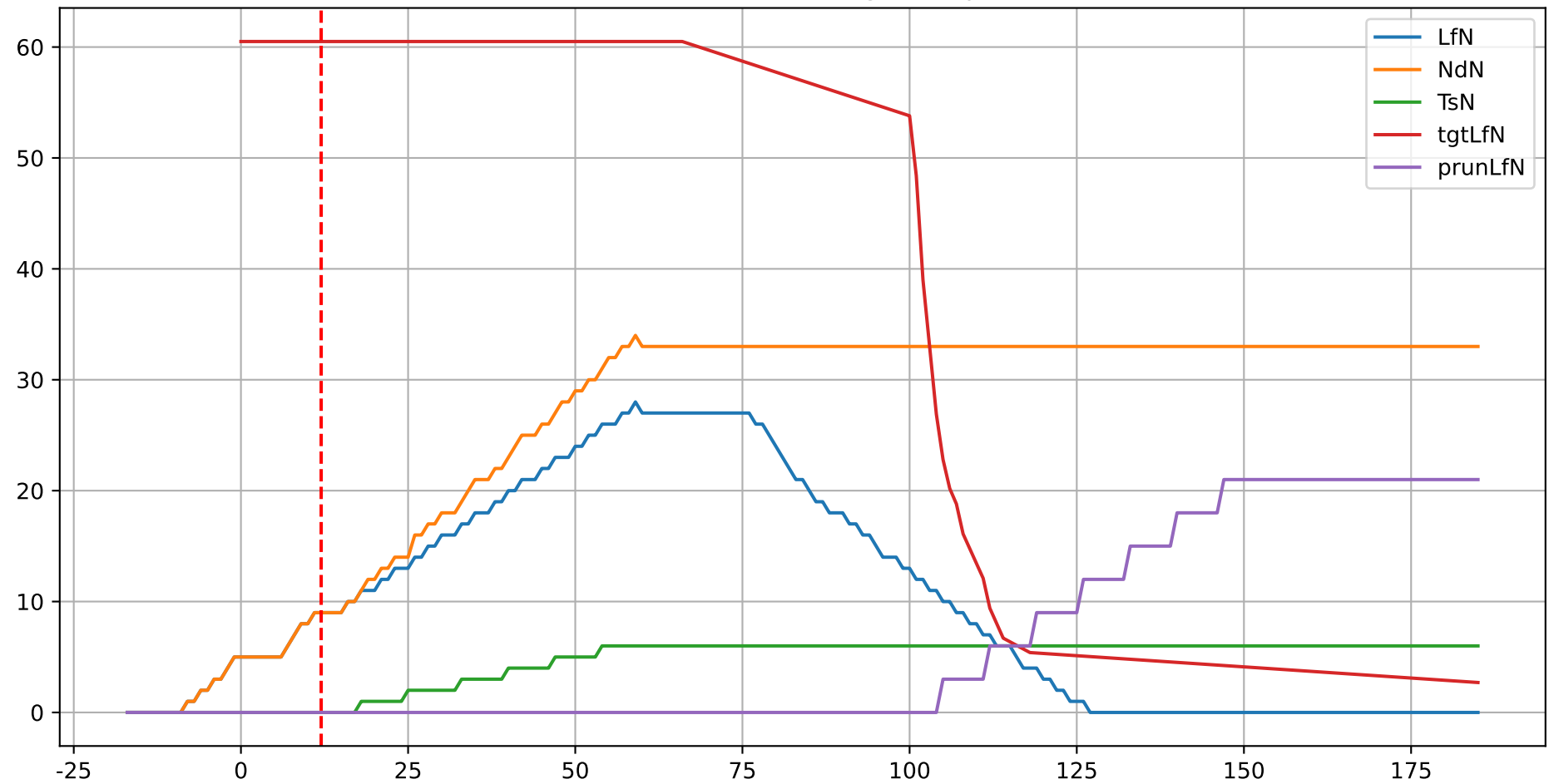
P3-7: ['PAT', 'RmT', 'CST']



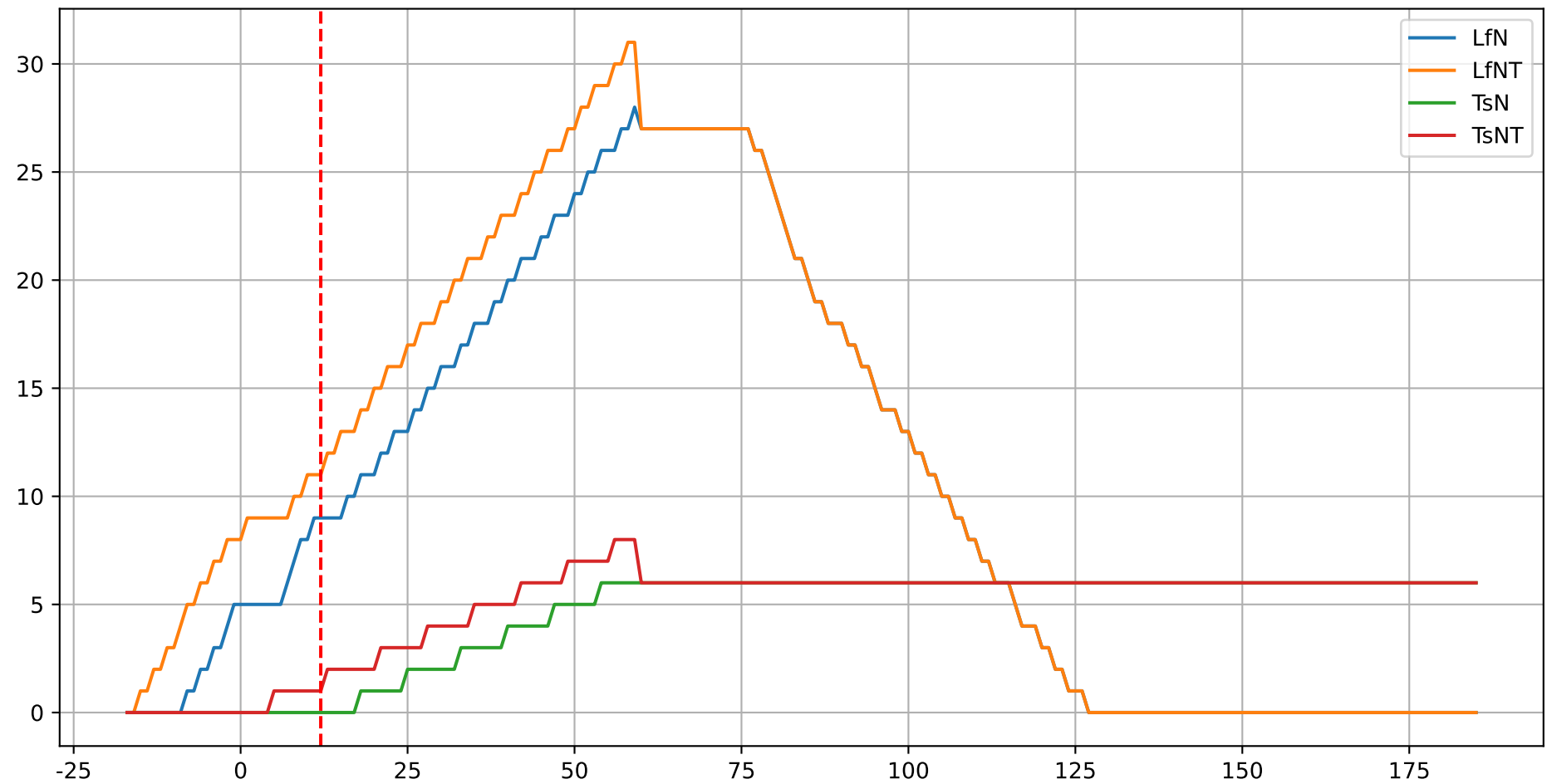
P3-7: ['CST', 'CDT', 'TtDW', 'TtDWH']



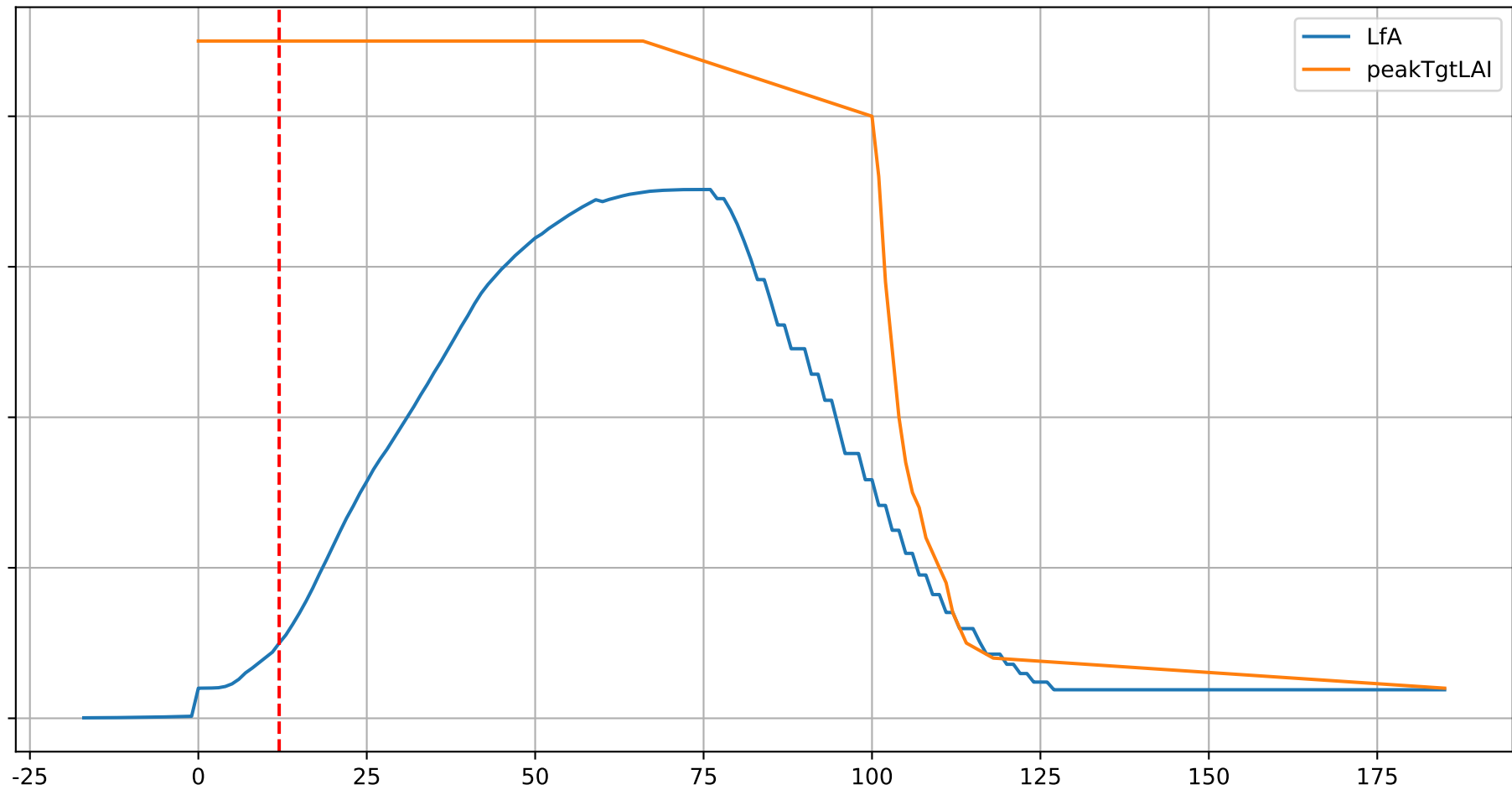
P3-7: ['LfN', 'NdN', 'TsN', 'tgtLfN', 'prunLfN']



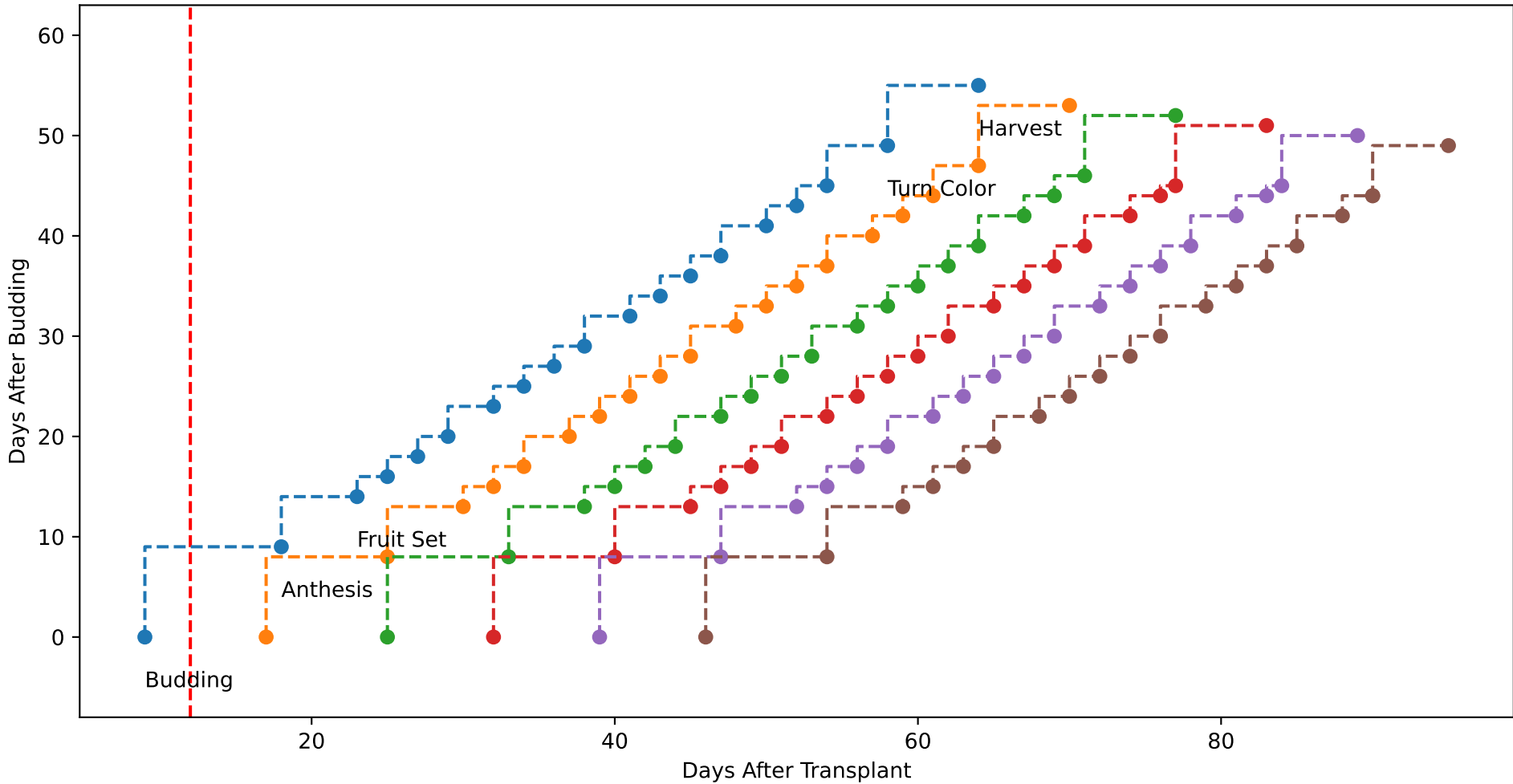
P3-7: ['LfN', 'LfNT', 'TsN', 'TsNT']



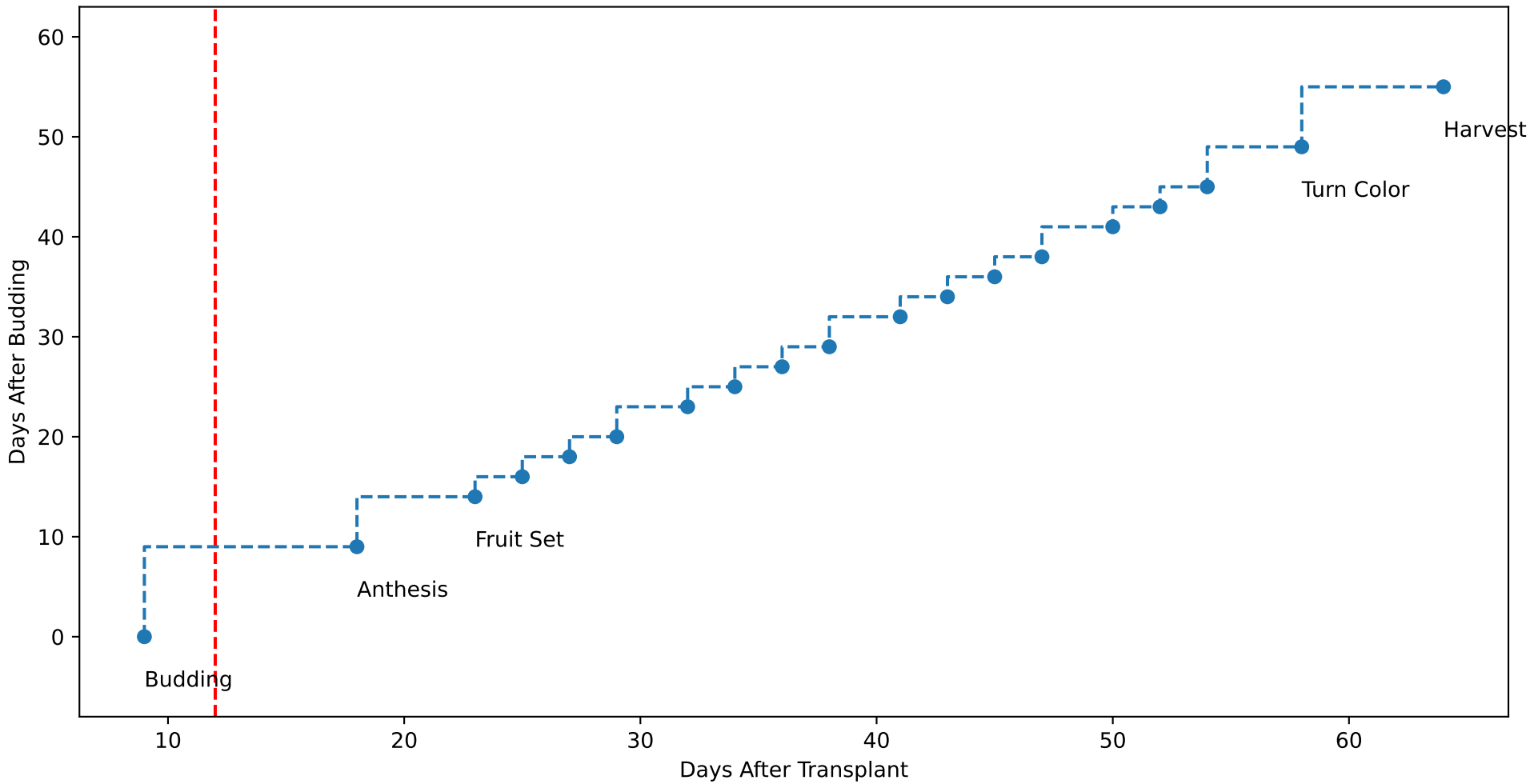
P3-7: ['LfA', 'peakTgtLAI']



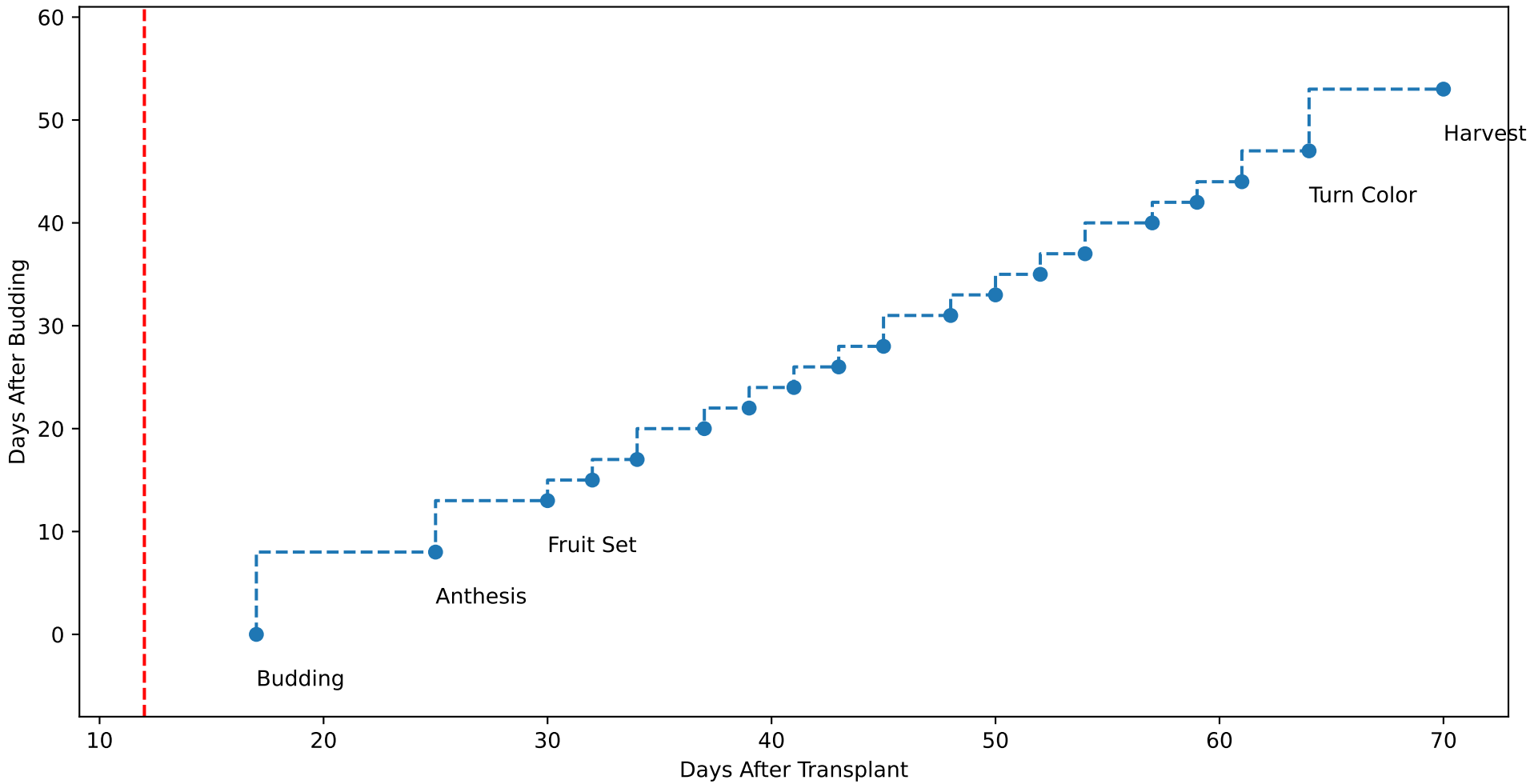
P3-7 (plot by DAT)



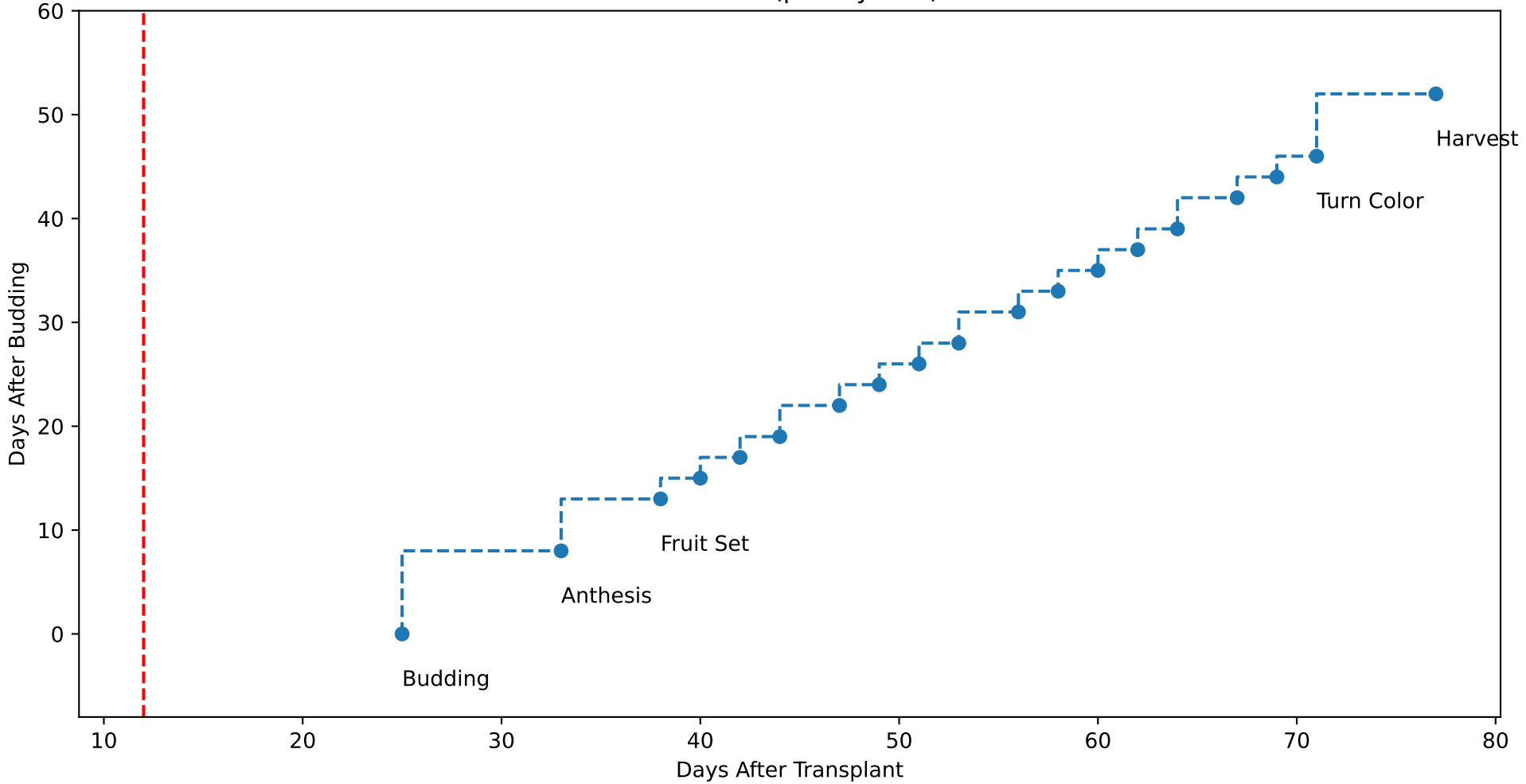
P3-7 TsN1 (plot by DAT)



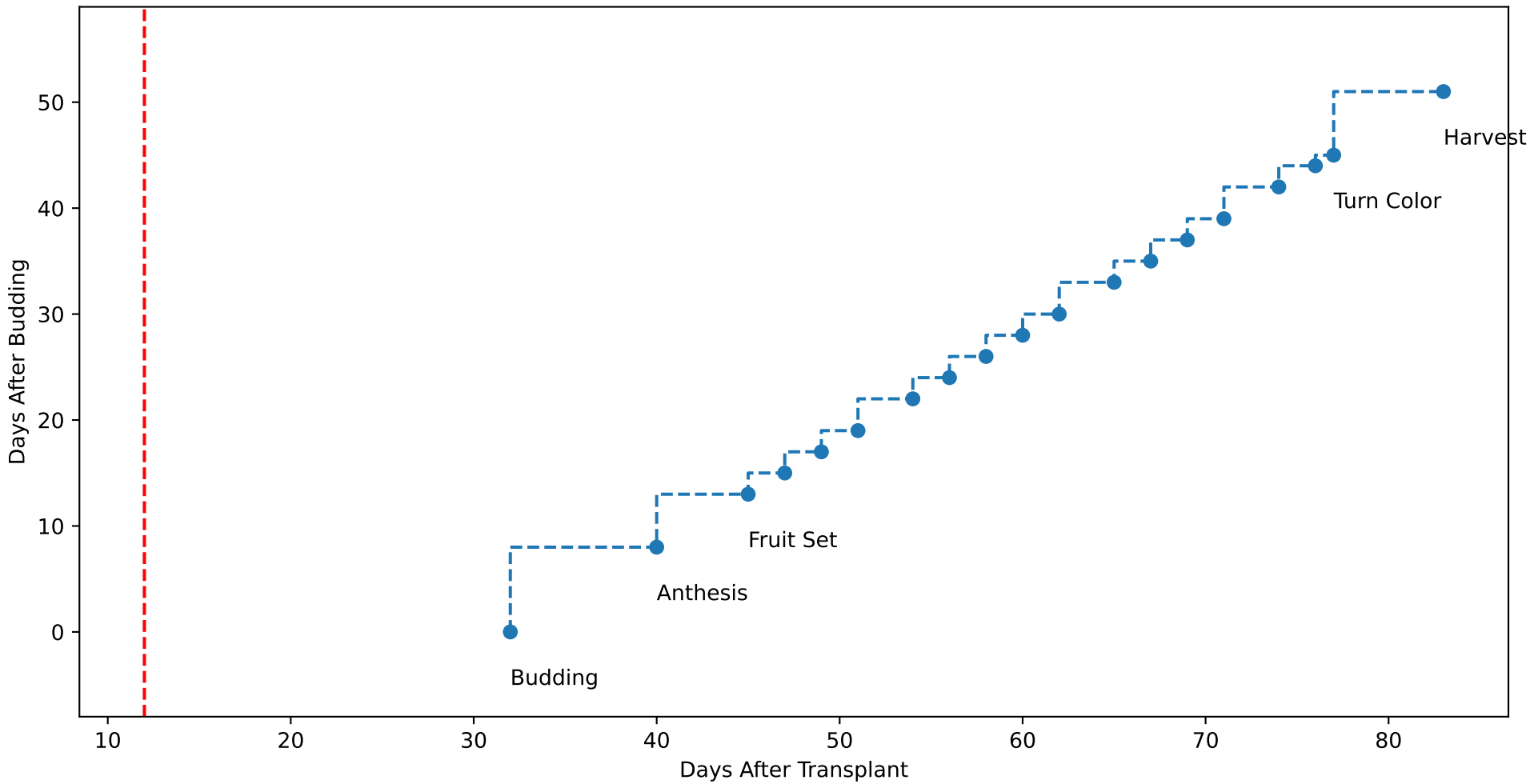
P3-7 TsN2 (plot by DAT)



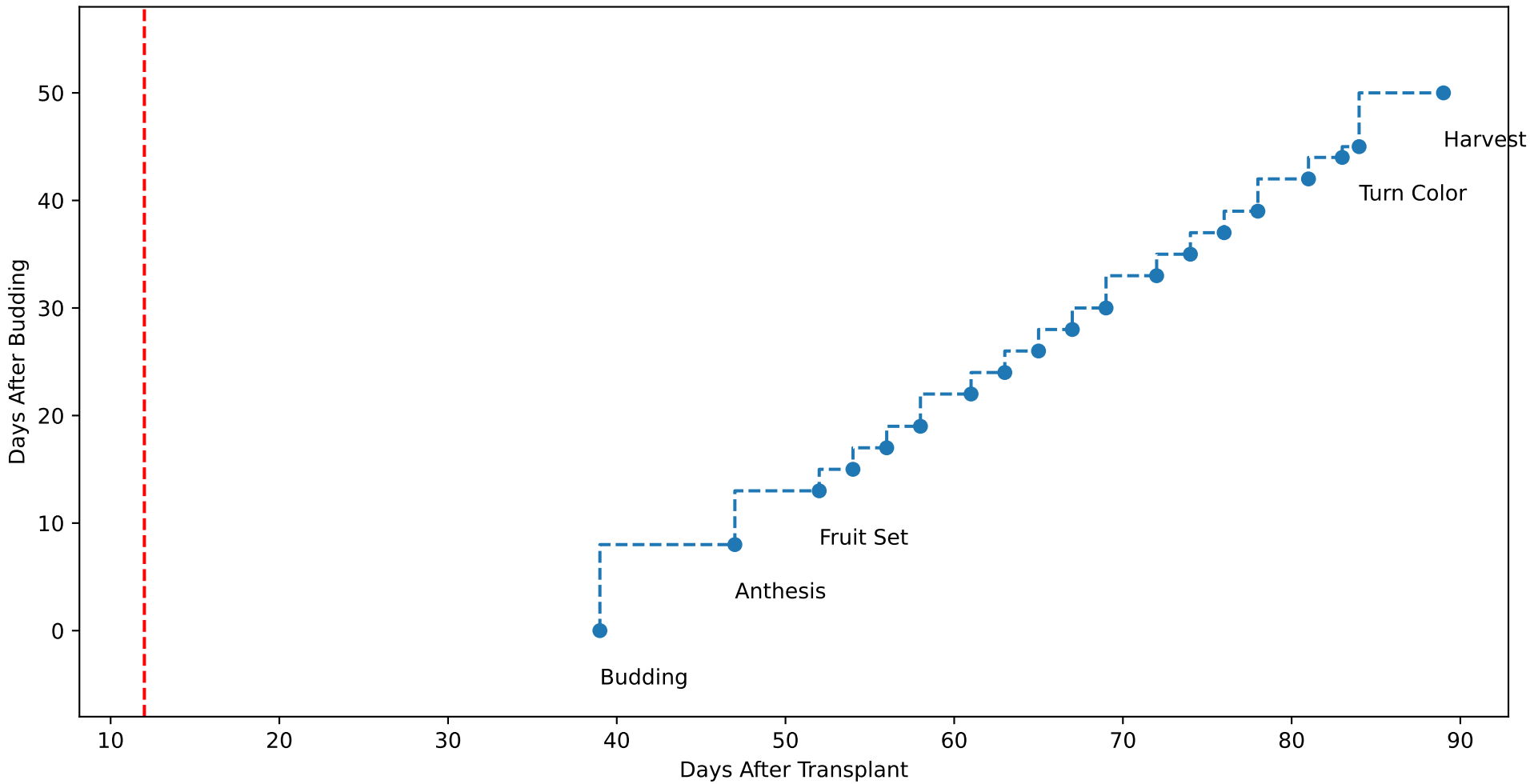
P3-7 TsN3 (plot by DAT)



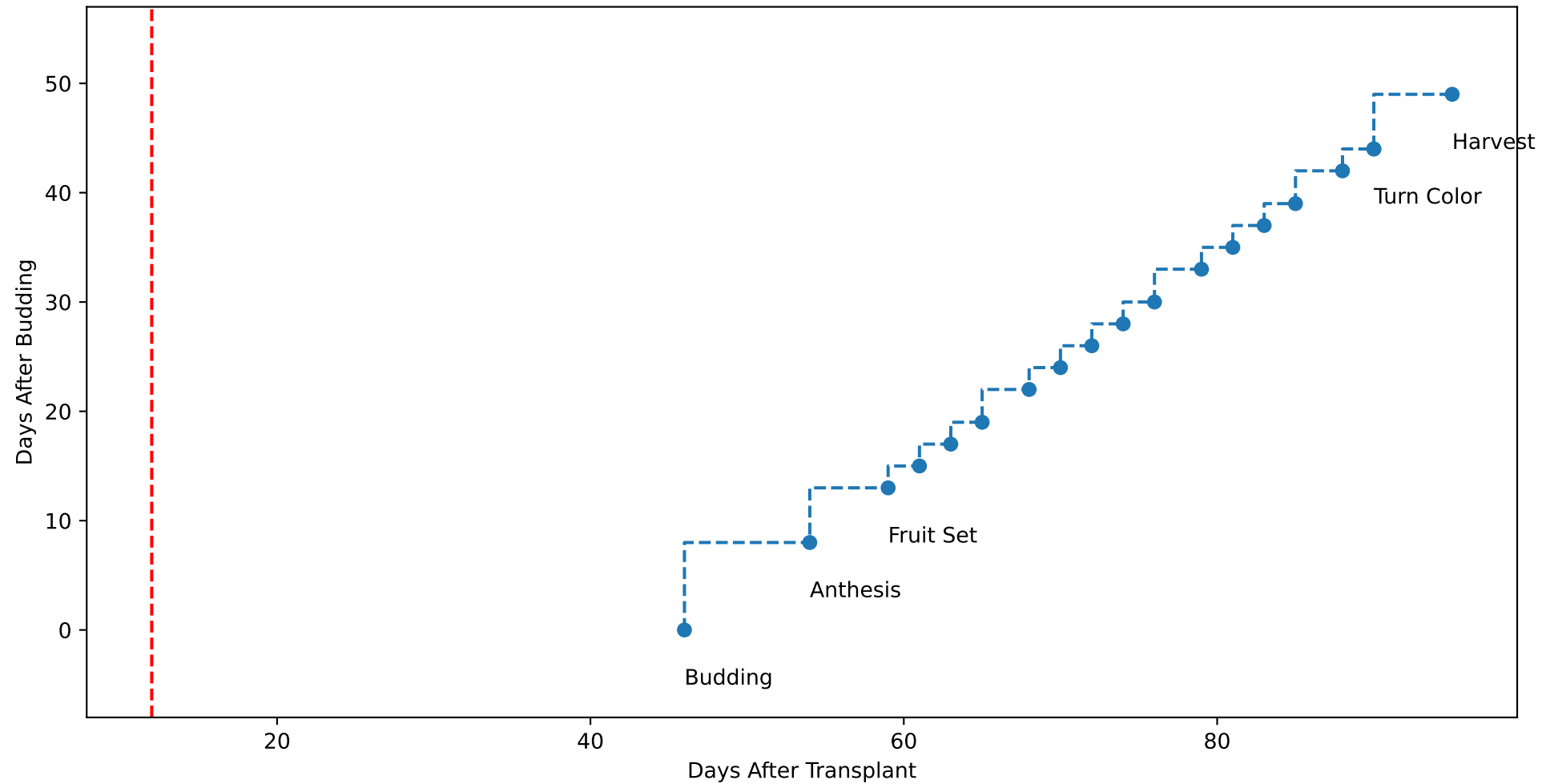
P3-7 TsN4 (plot by DAT)



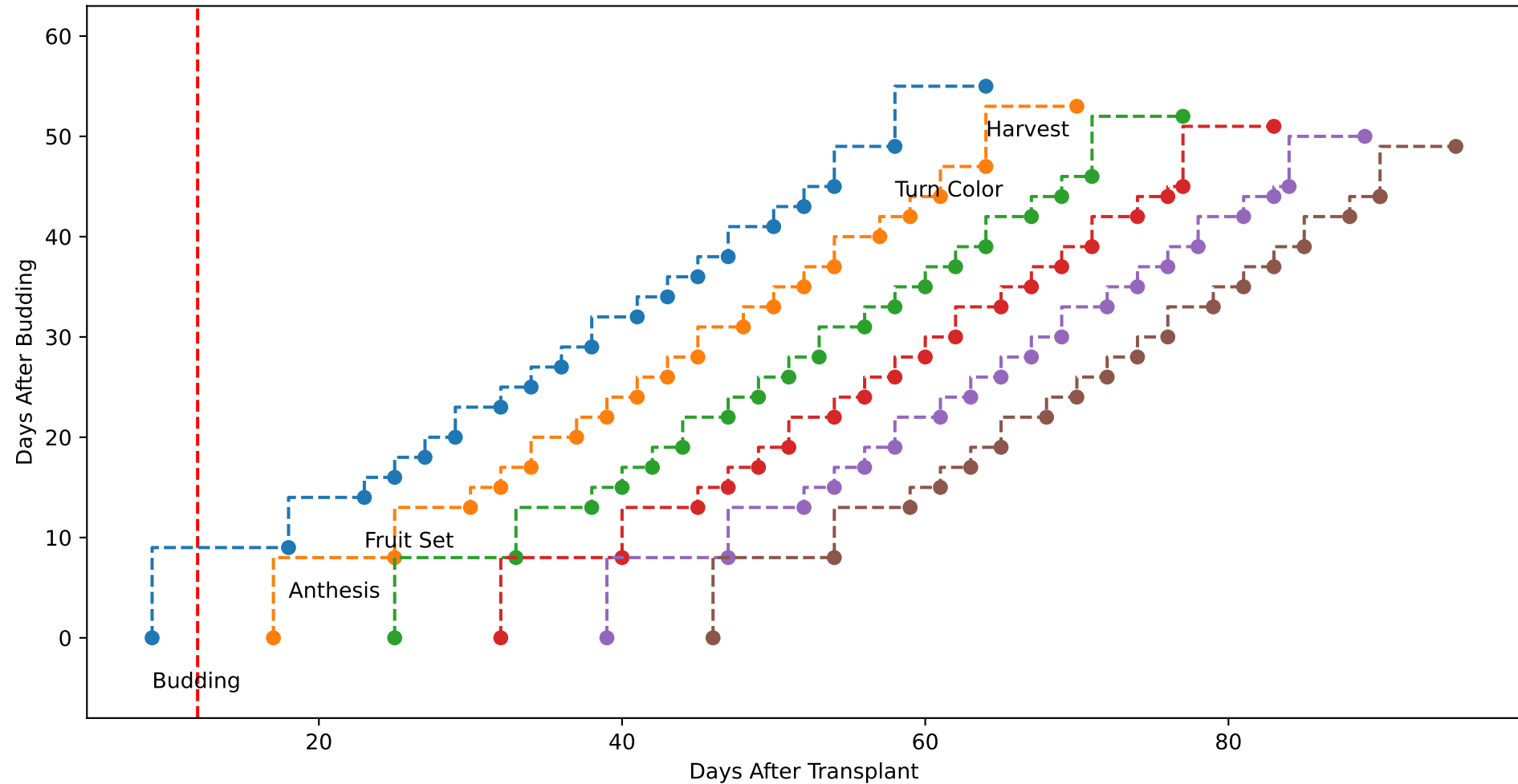
P3-7 TsN5 (plot by DAT)



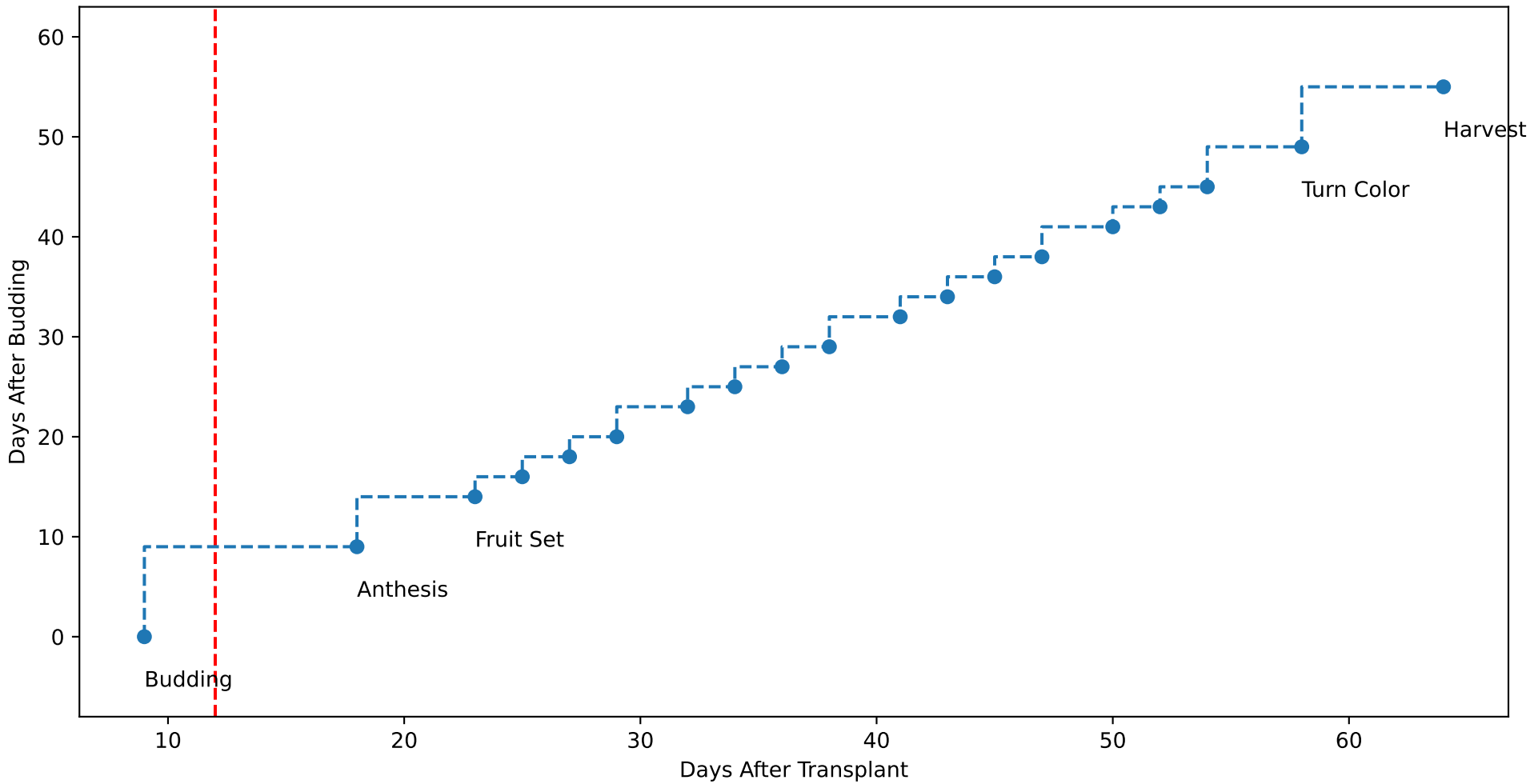
P3-7 TsN6 (plot by DAT)



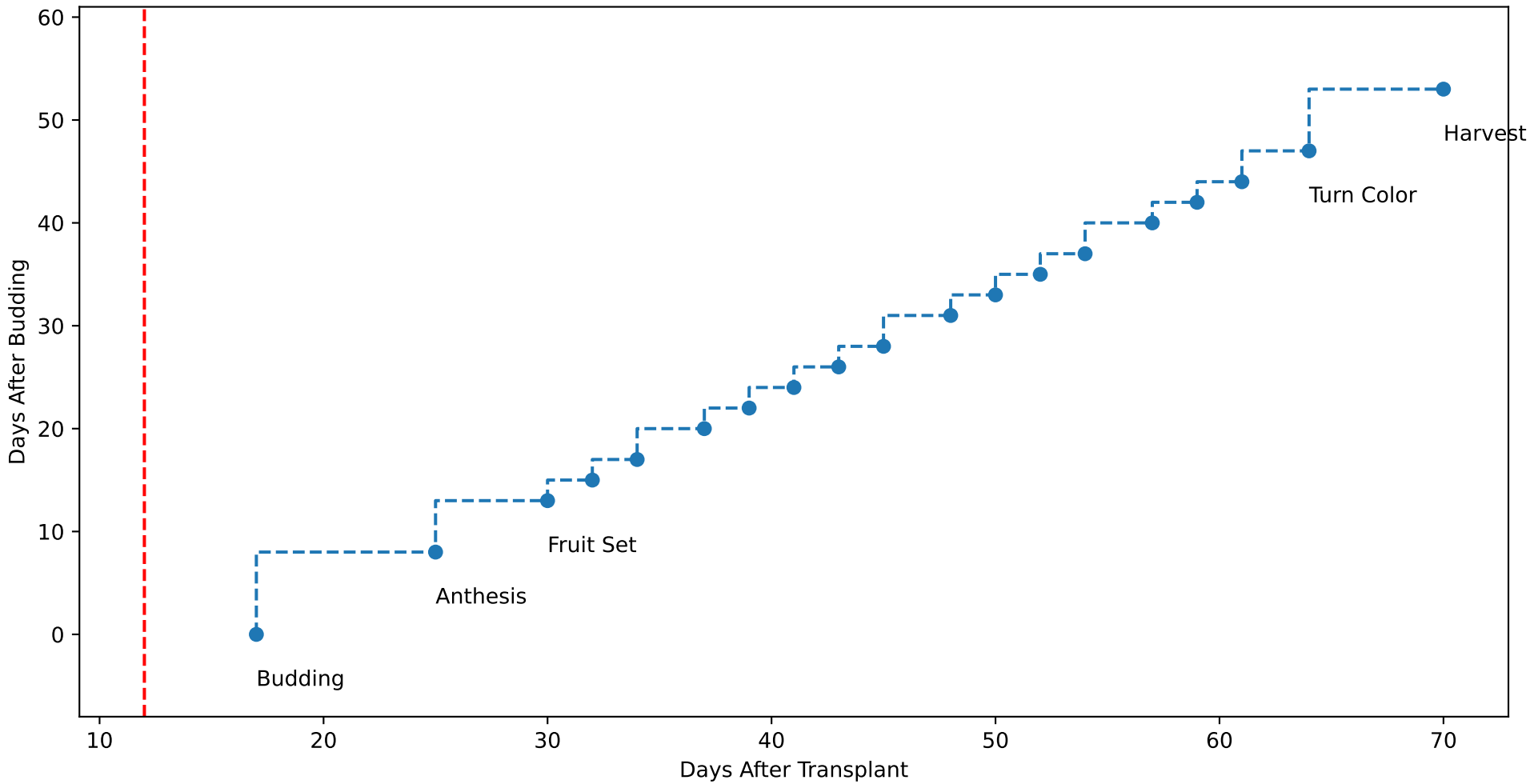
P3-7 (plot by adjDAT)



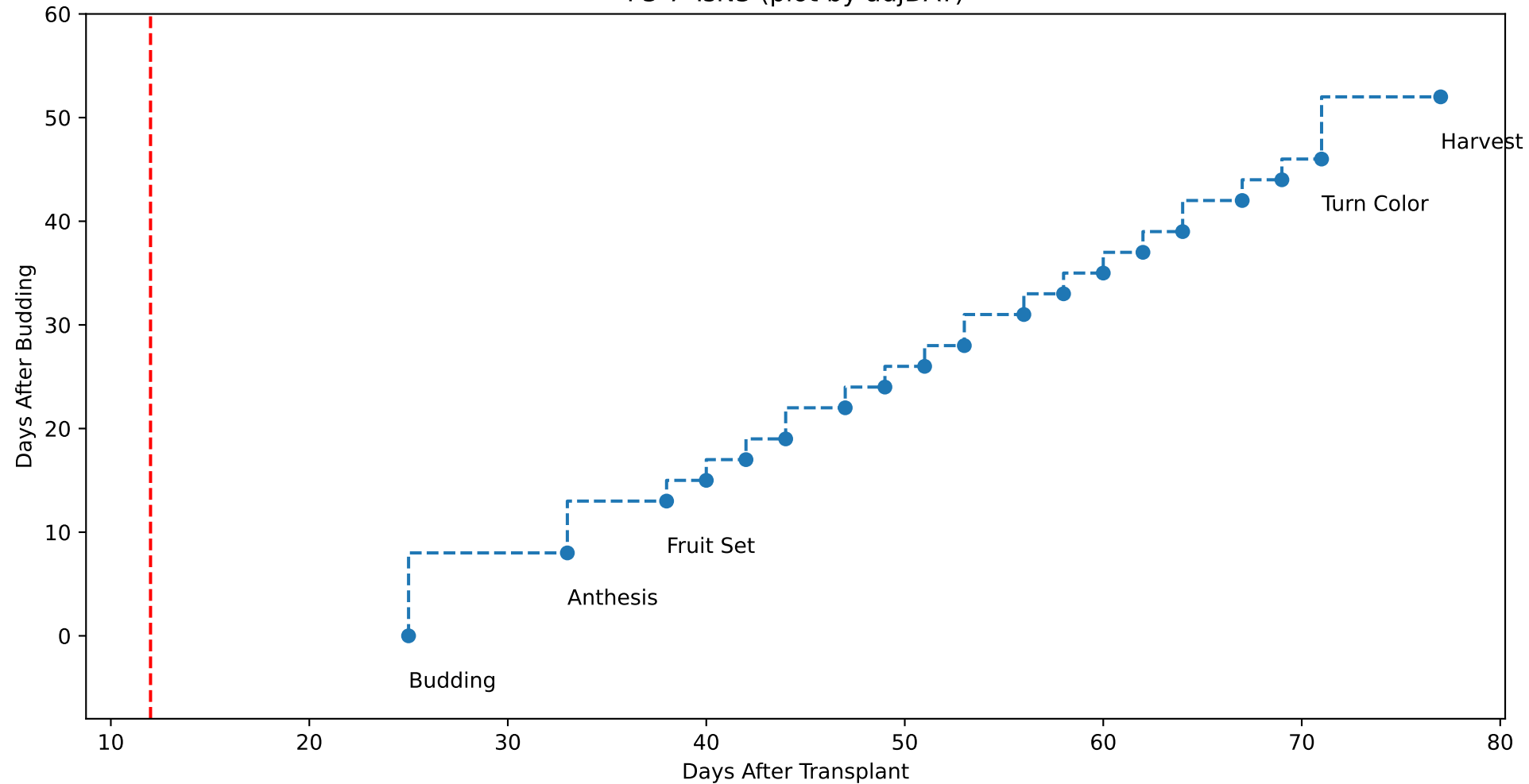
P3-7 TsN1 (plot by adjDAT)



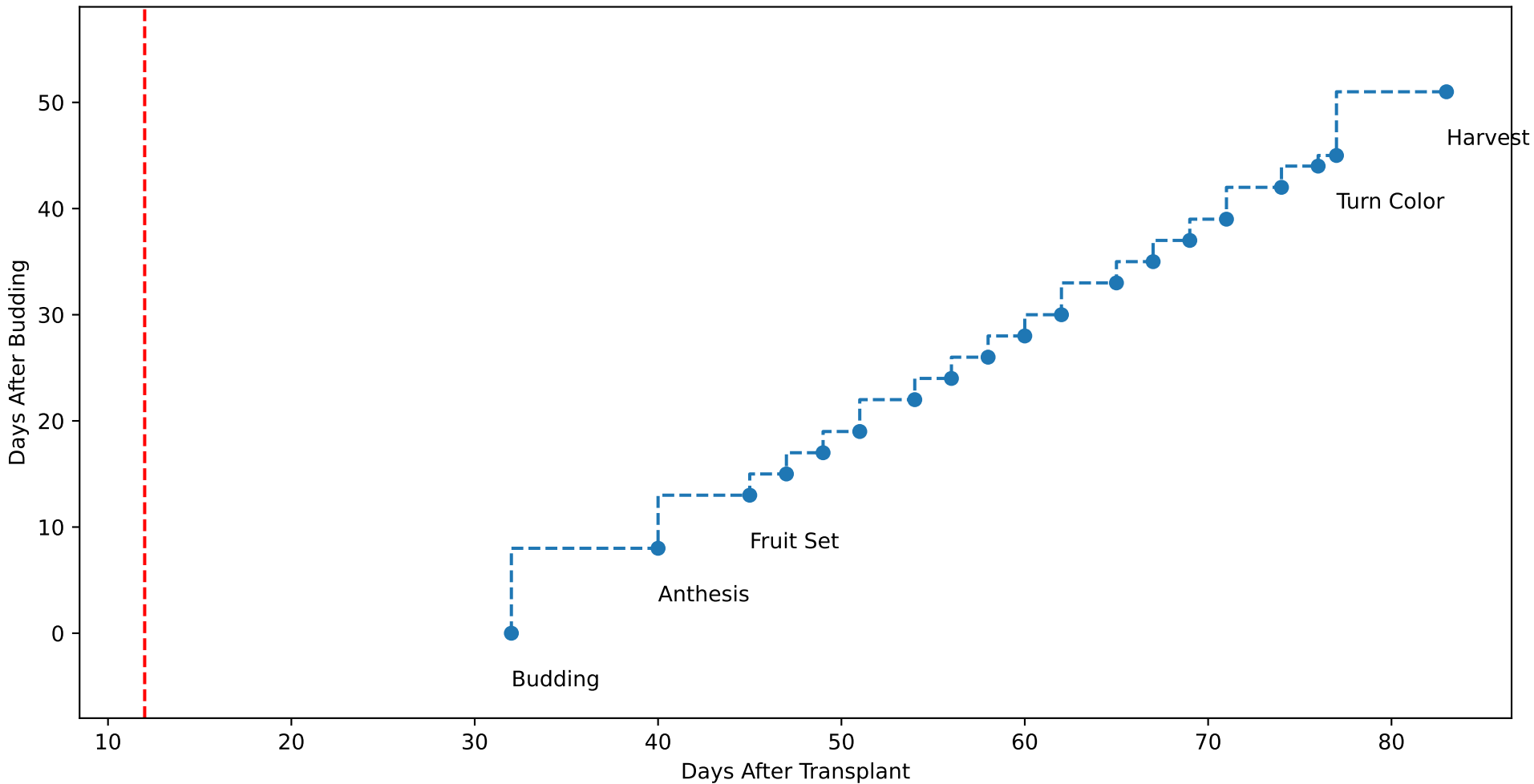
P3-7 TsN2 (plot by adjDAT)



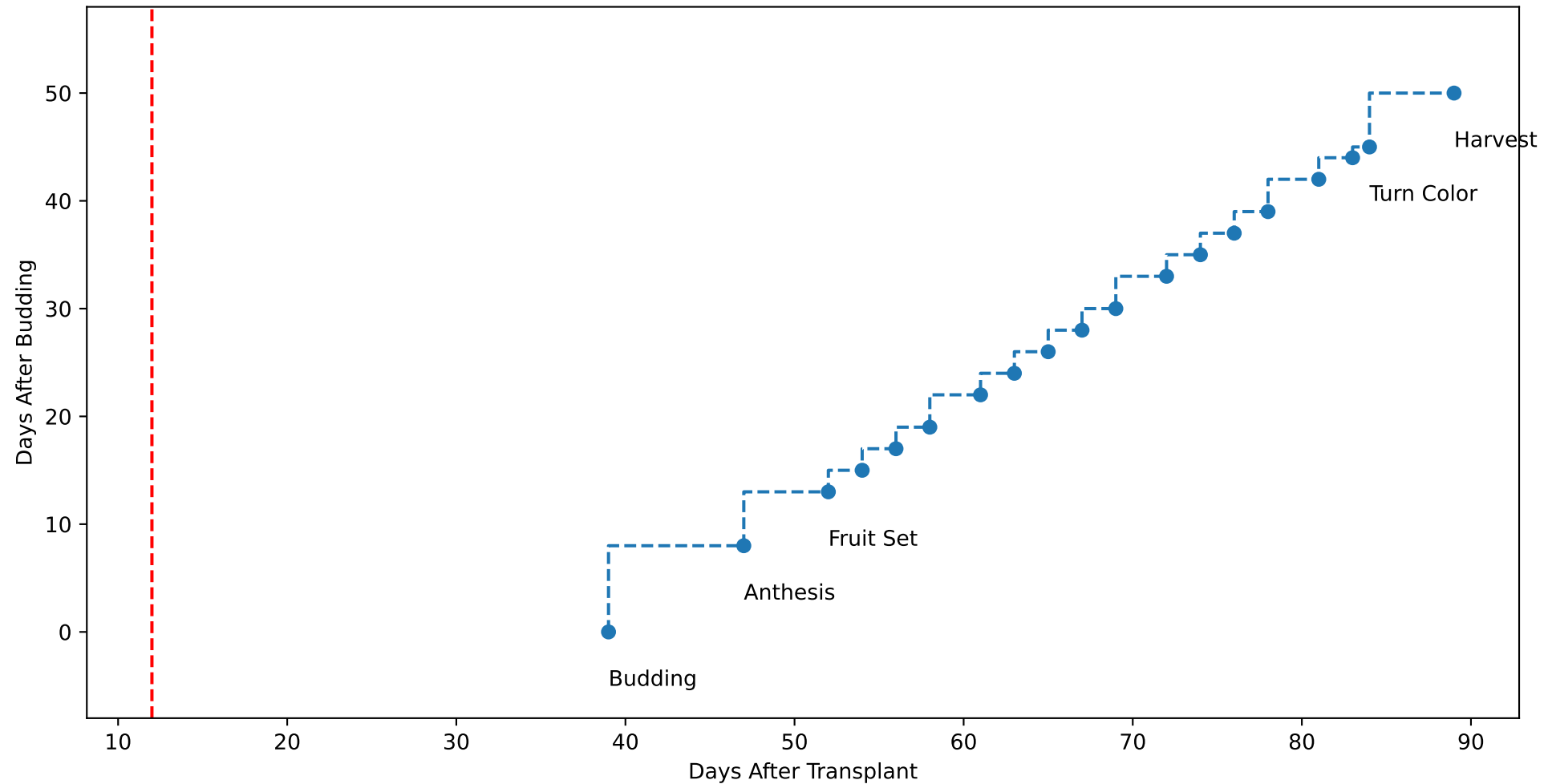
P3-7 TsN3 (plot by adjDAT)



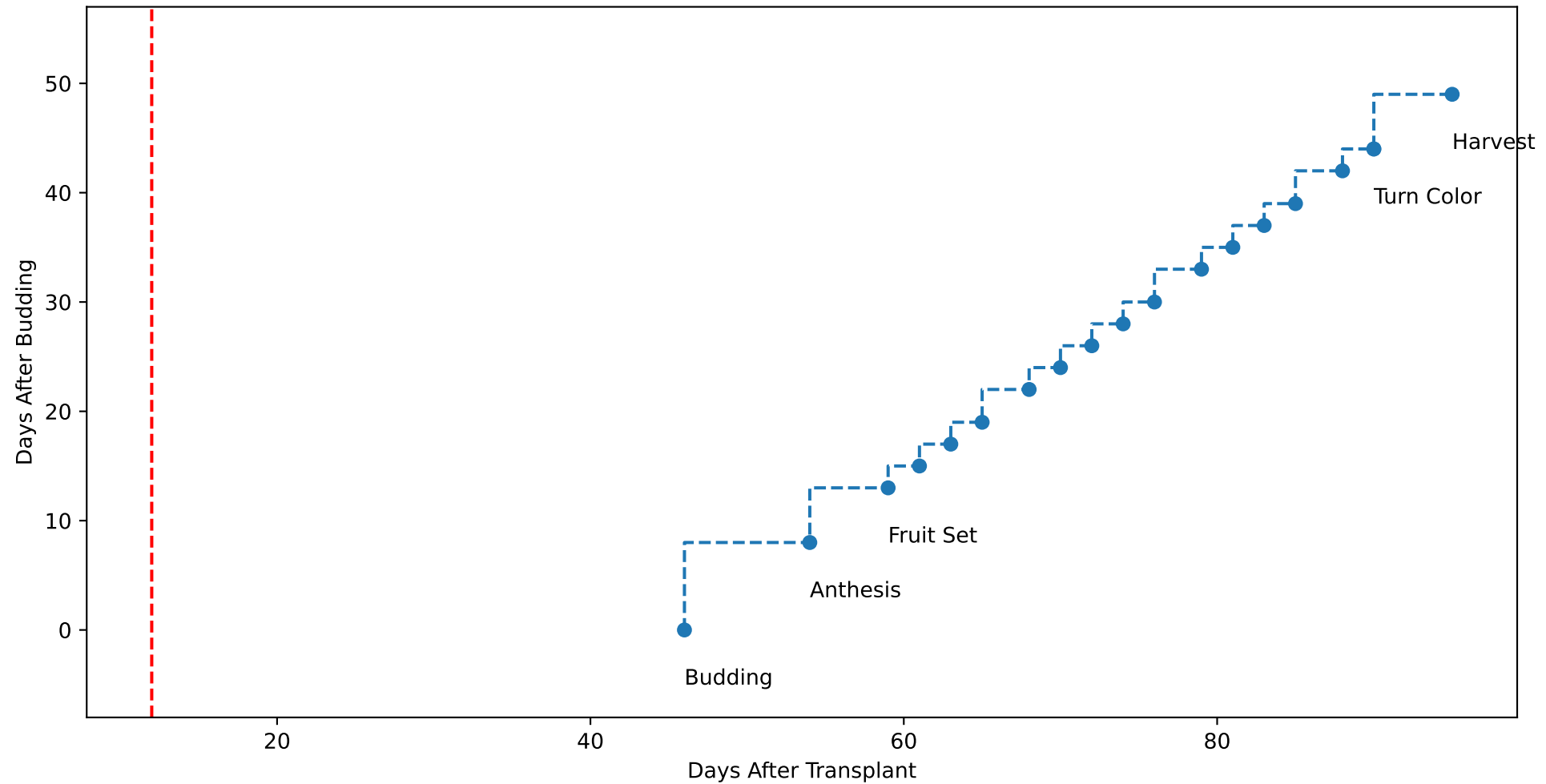
P3-7 TsN4 (plot by adjDAT)



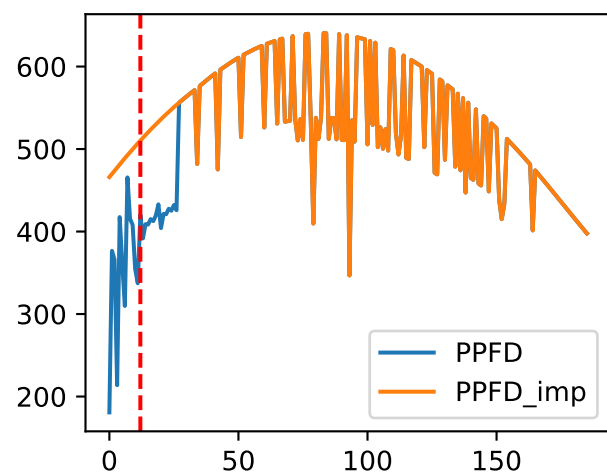
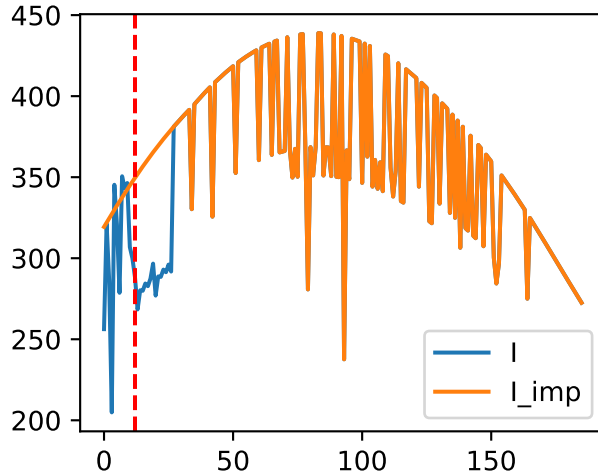
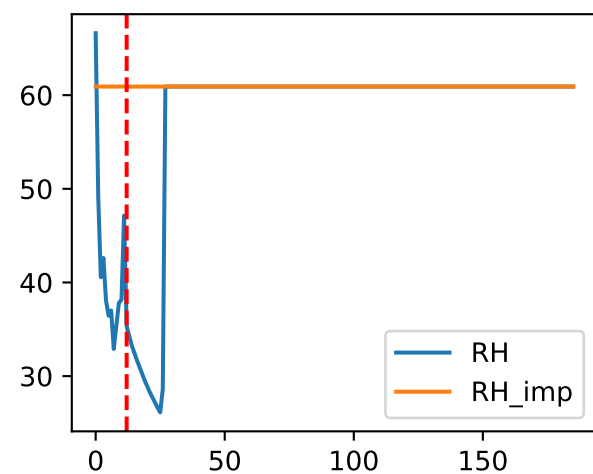
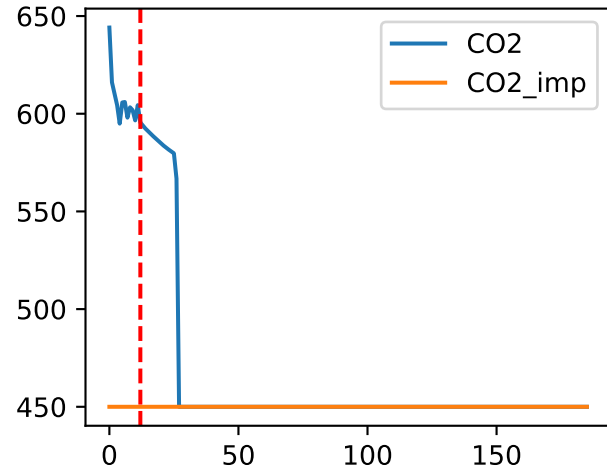
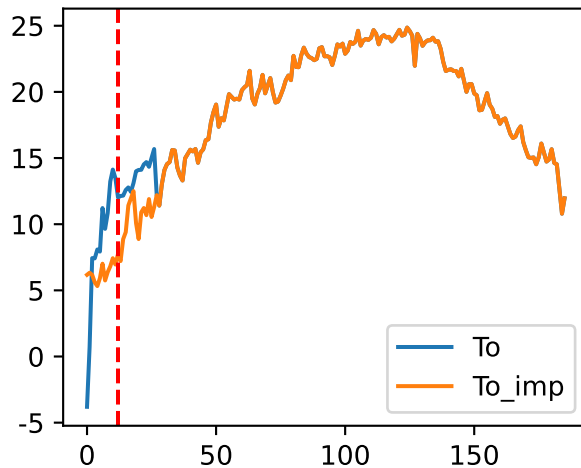
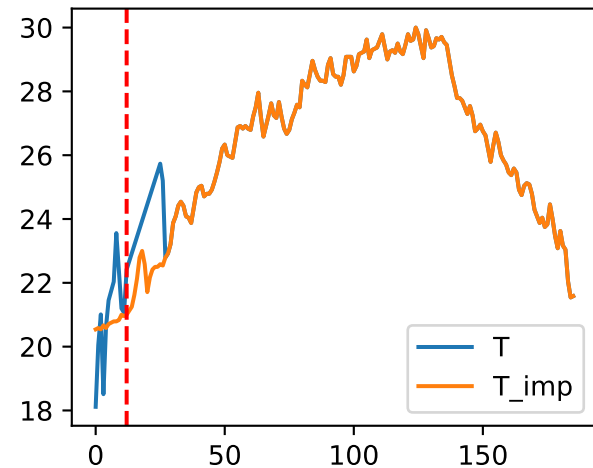
P3-7 TsN5 (plot by adjDAT)



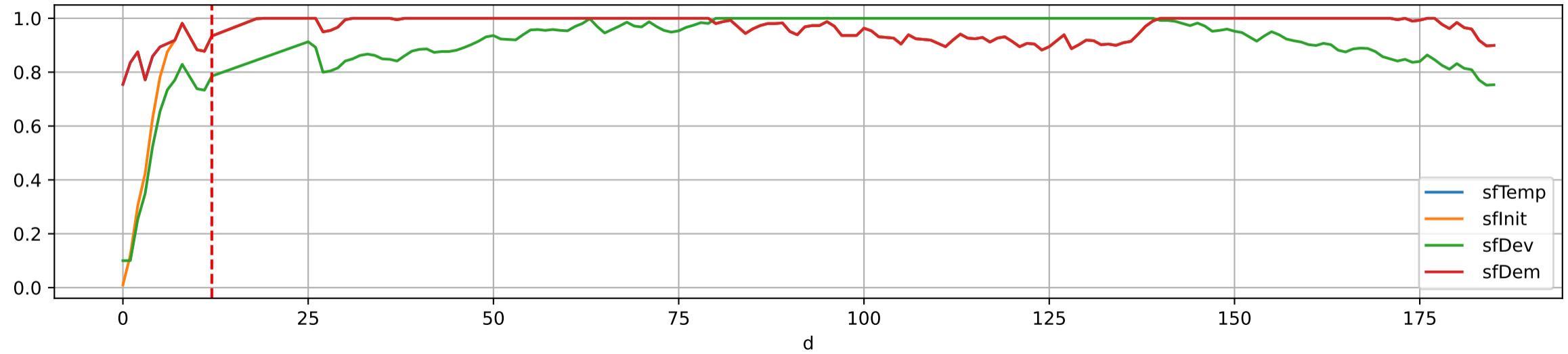
P3-7 TsN6 (plot by adjDAT)



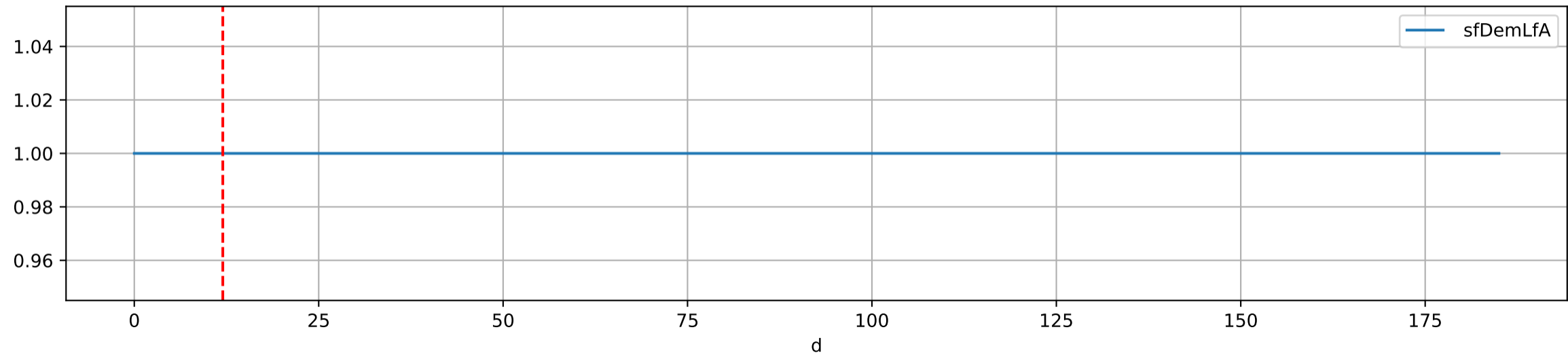
Plot Env Data



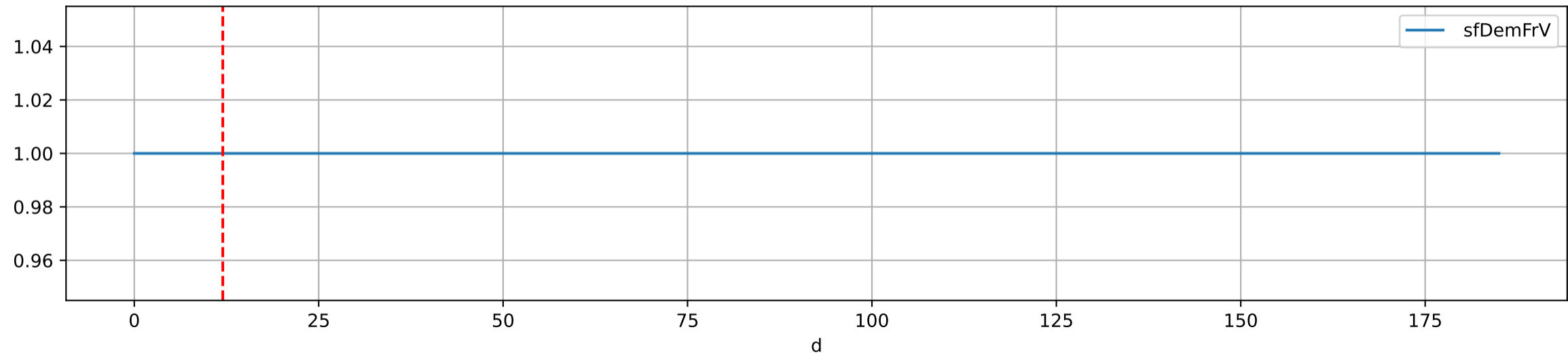
Plot [['sfTemp', 'sfInit', 'sfDev', 'sfDem']]



Plot ['sfDemLfA']



Plot ['sfDemFrV']



Plot EnvOpt Decision

