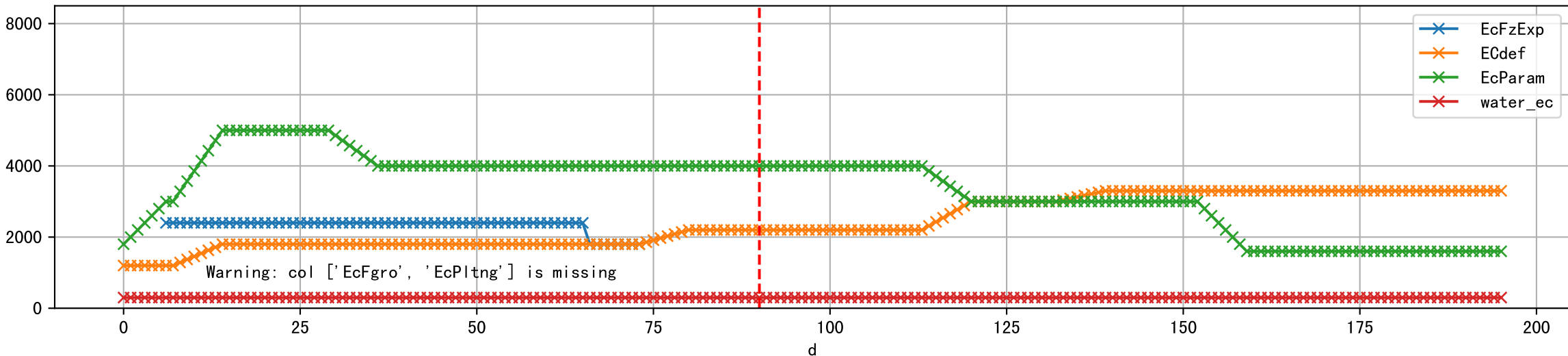
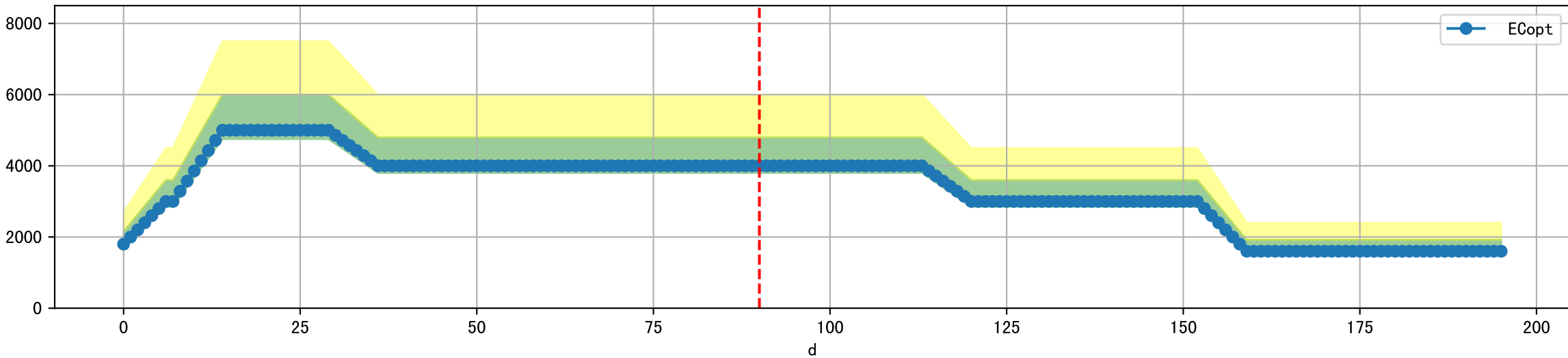


FgArea: [' 0' ]  
NC11 P7  
2026-01-15 (Day 90)

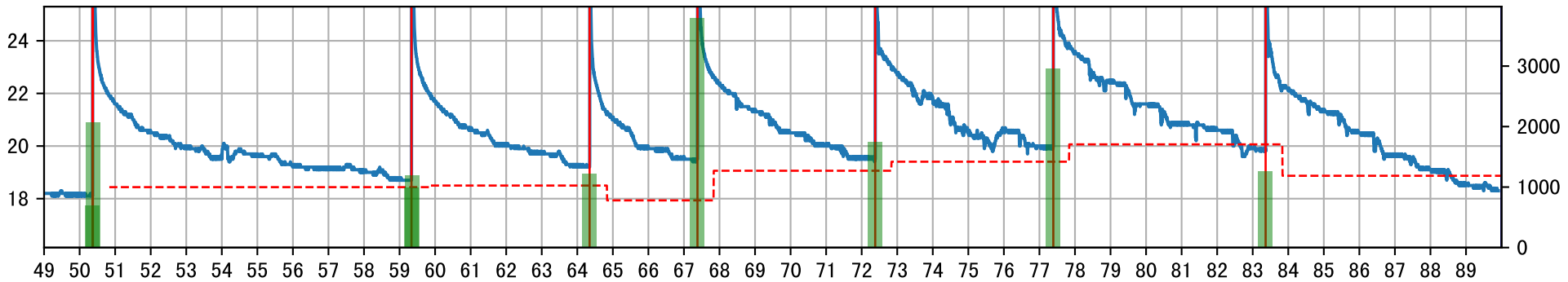
Plot [['EcFgro', 'EcFzExp', 'EcPltng', 'ECdef', 'EcParam', 'water\_ec']]



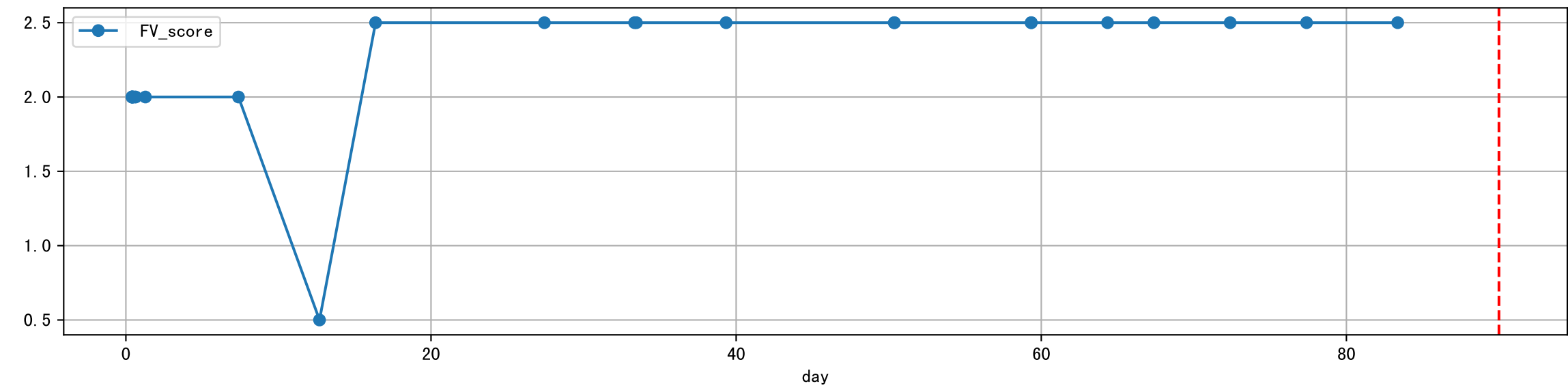
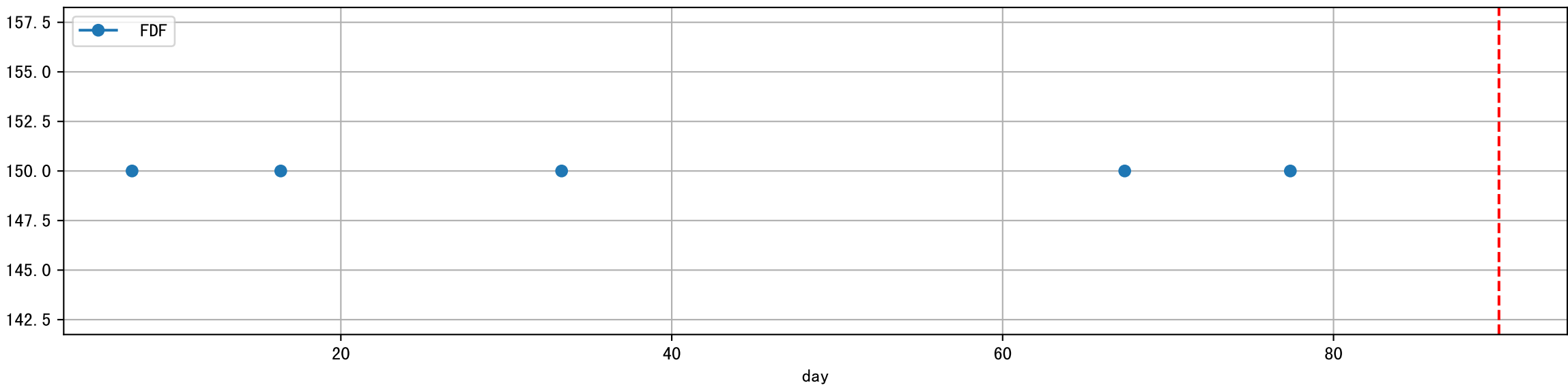
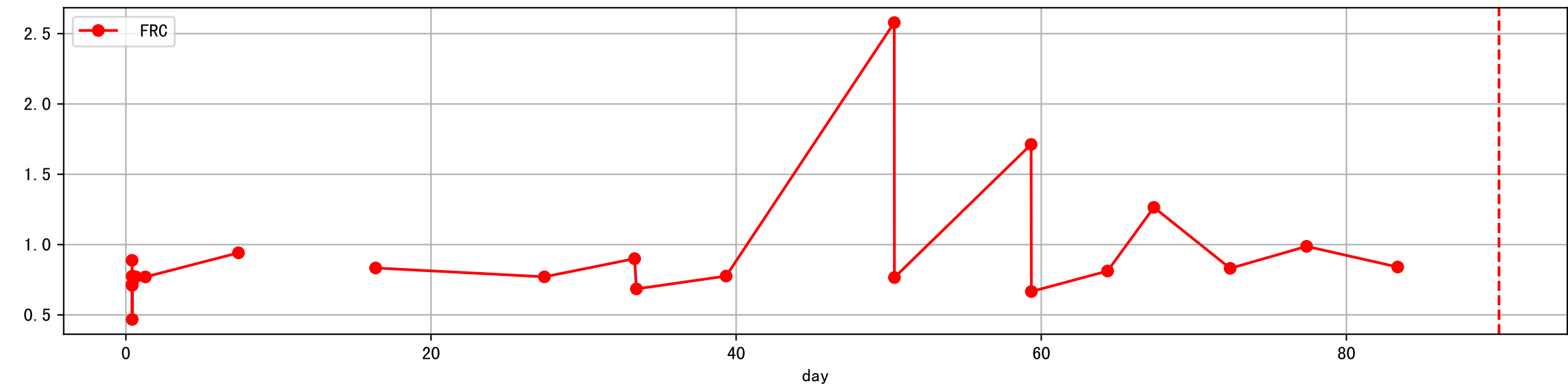
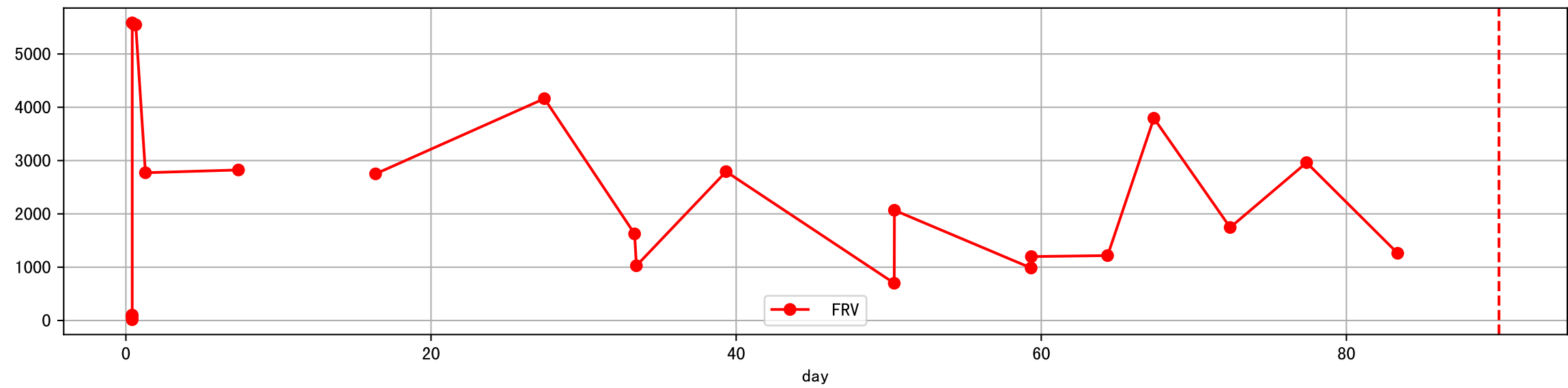
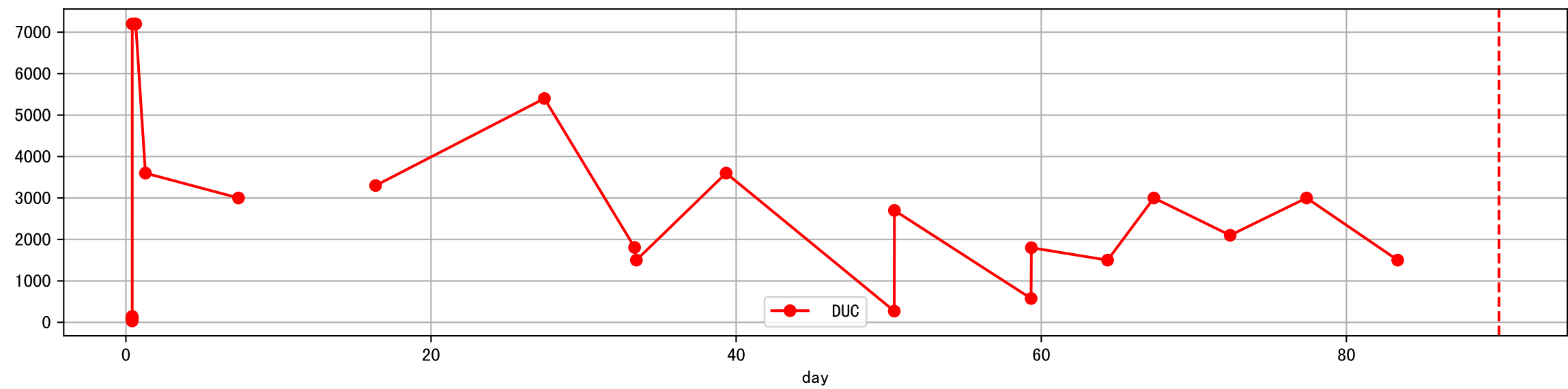
Plot [' ECopt ']



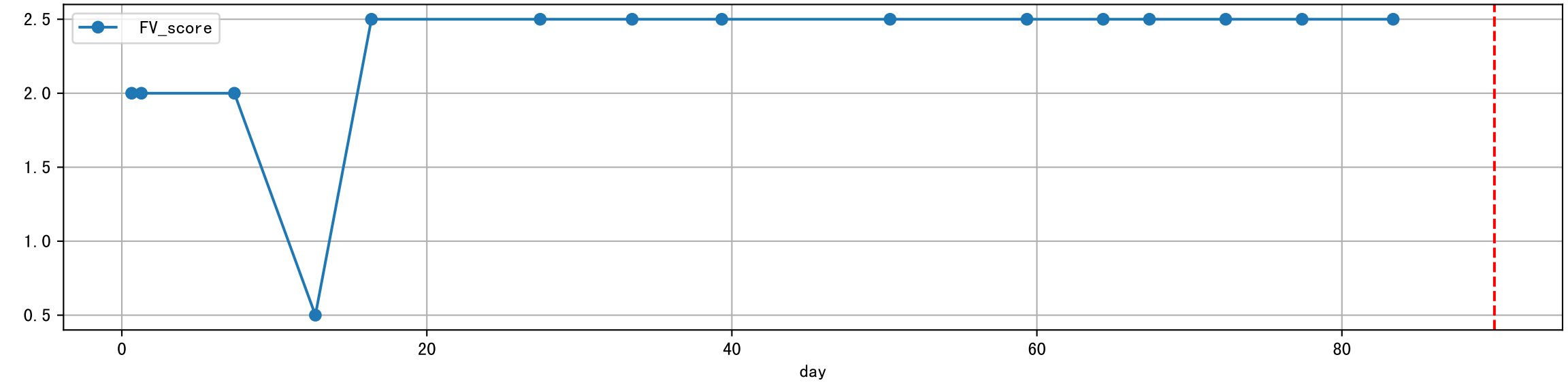
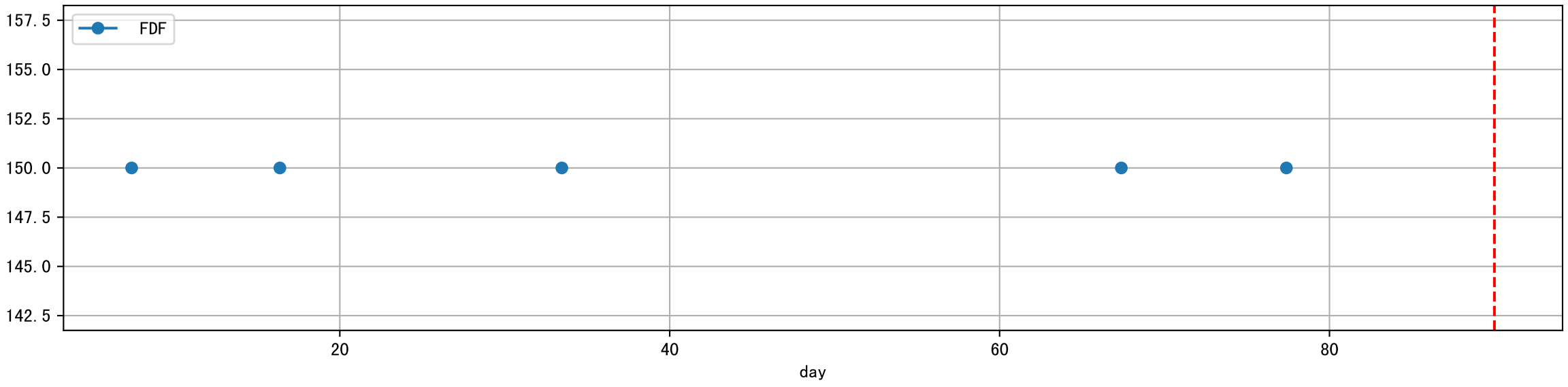
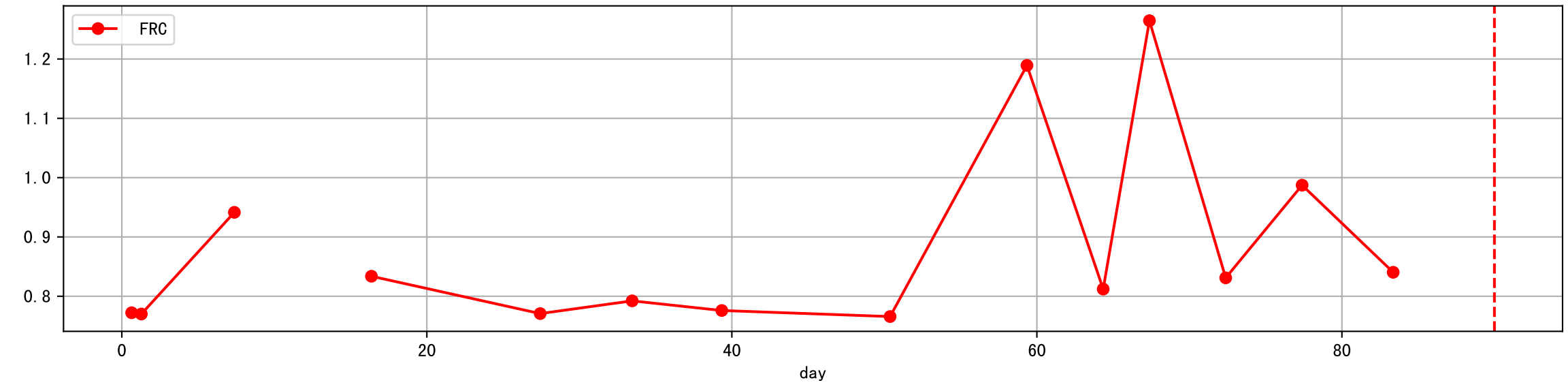
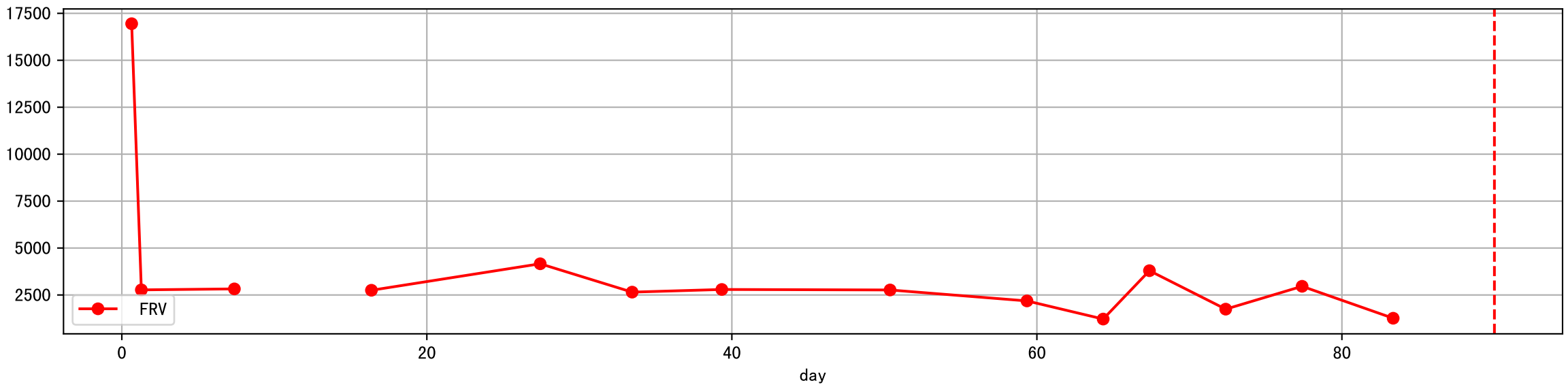
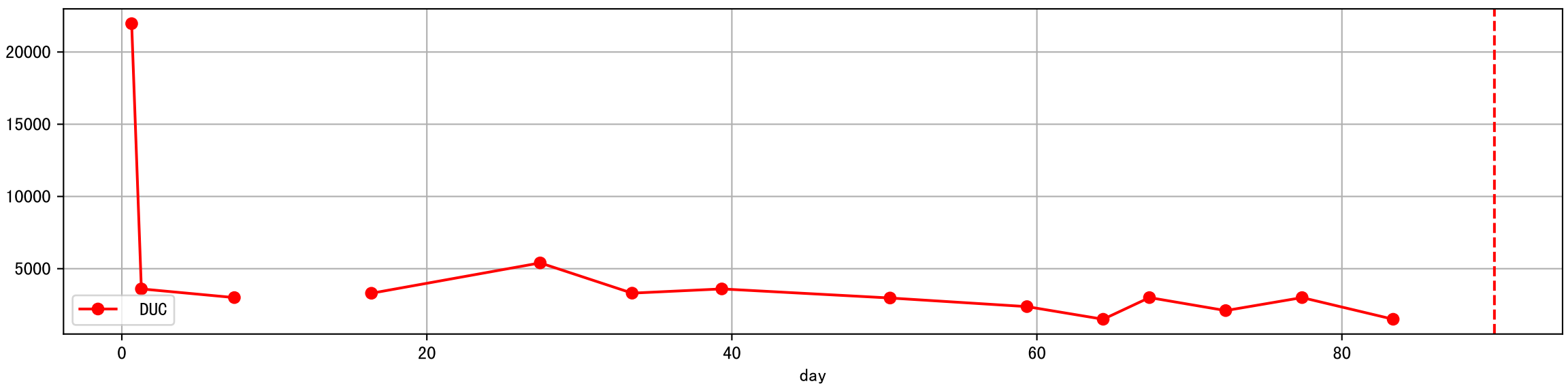
P7\_0: M\_E

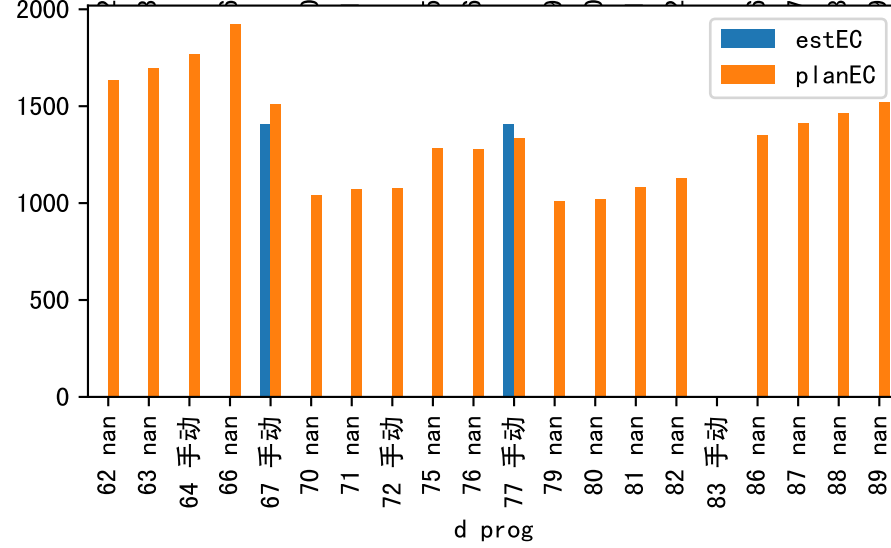
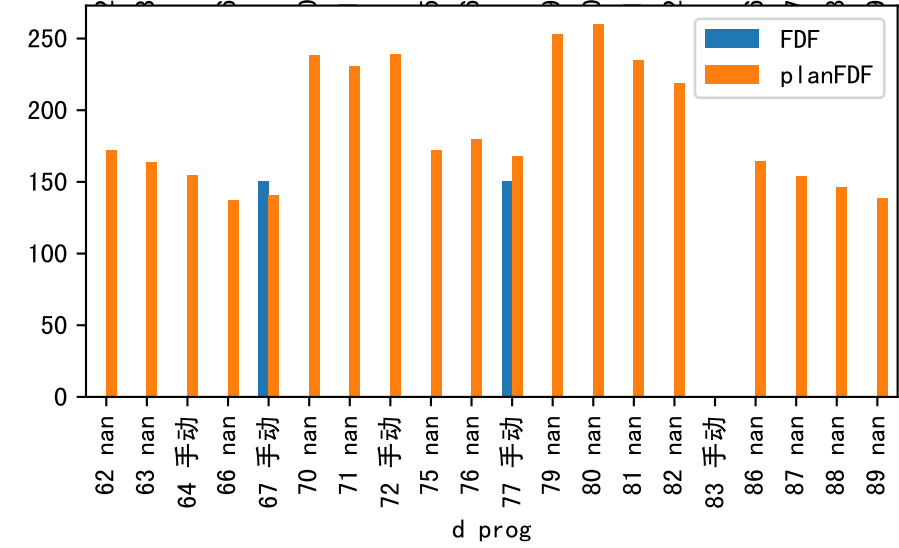
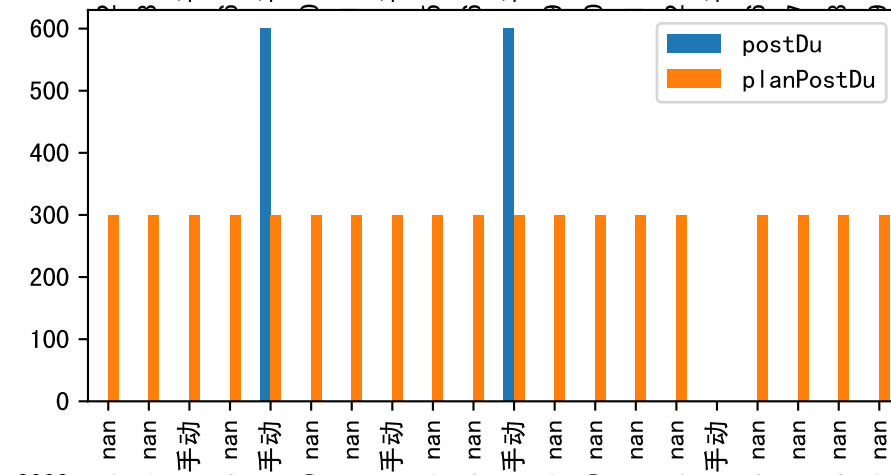
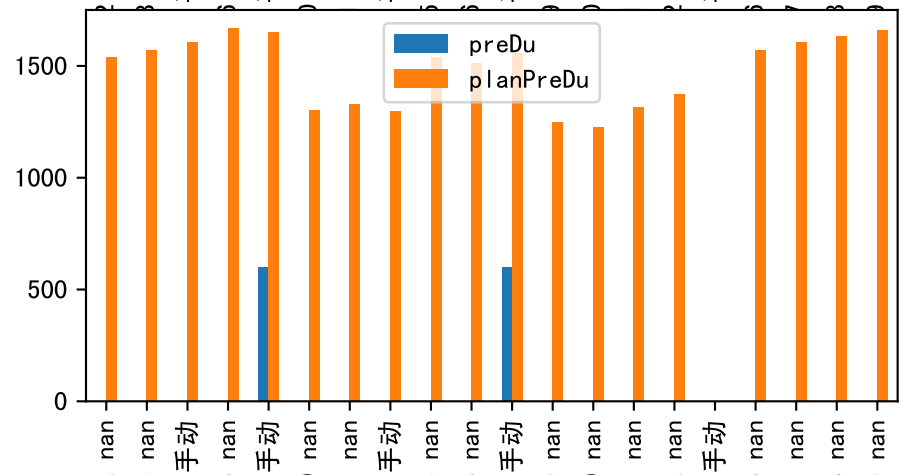
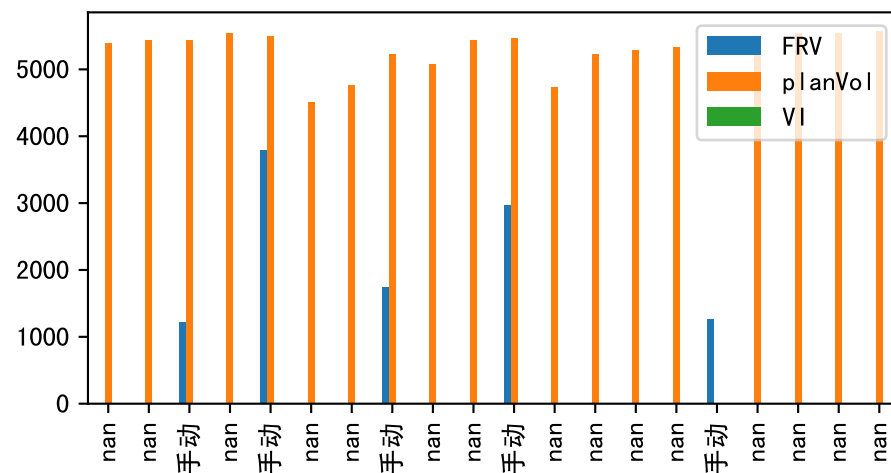
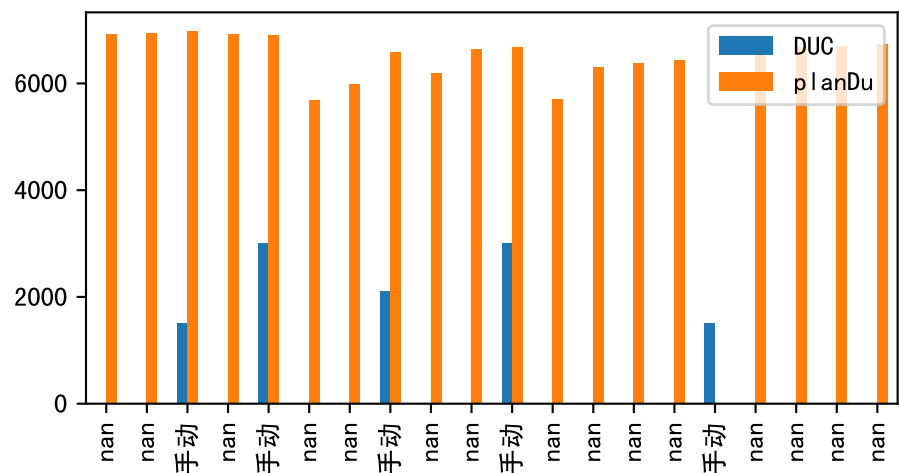


plot dFFv



plot dfFv (daily Agg)

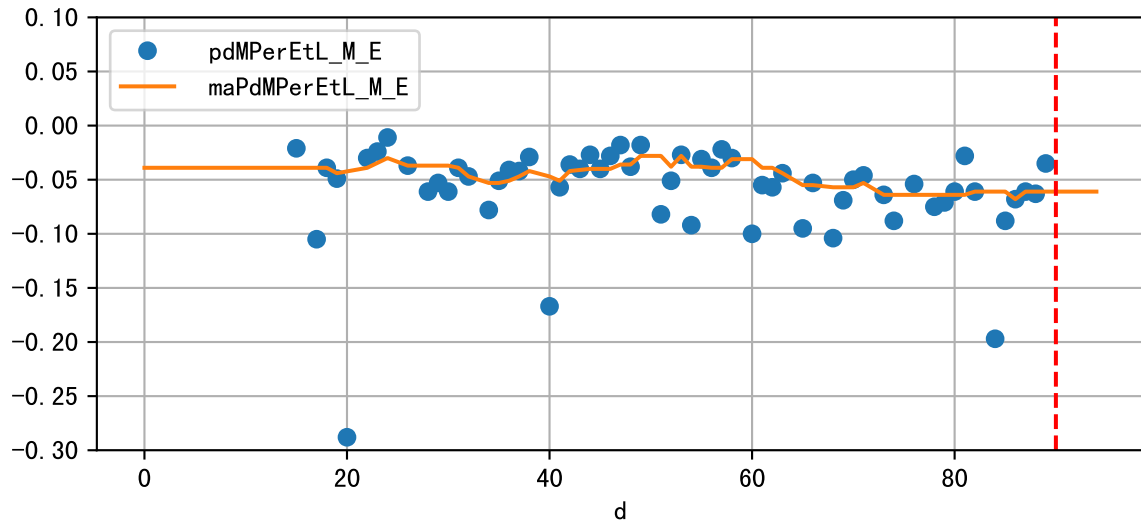
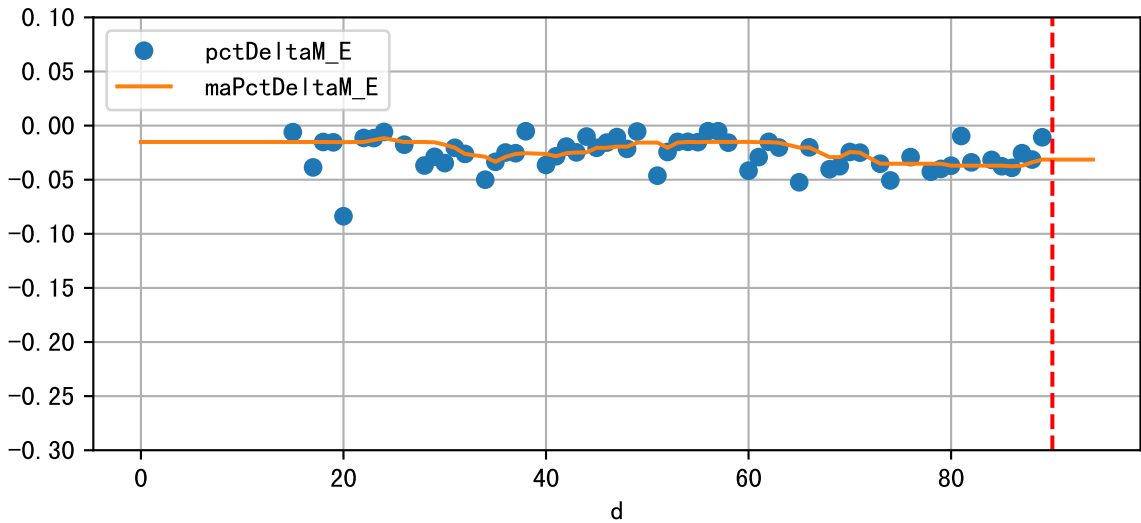




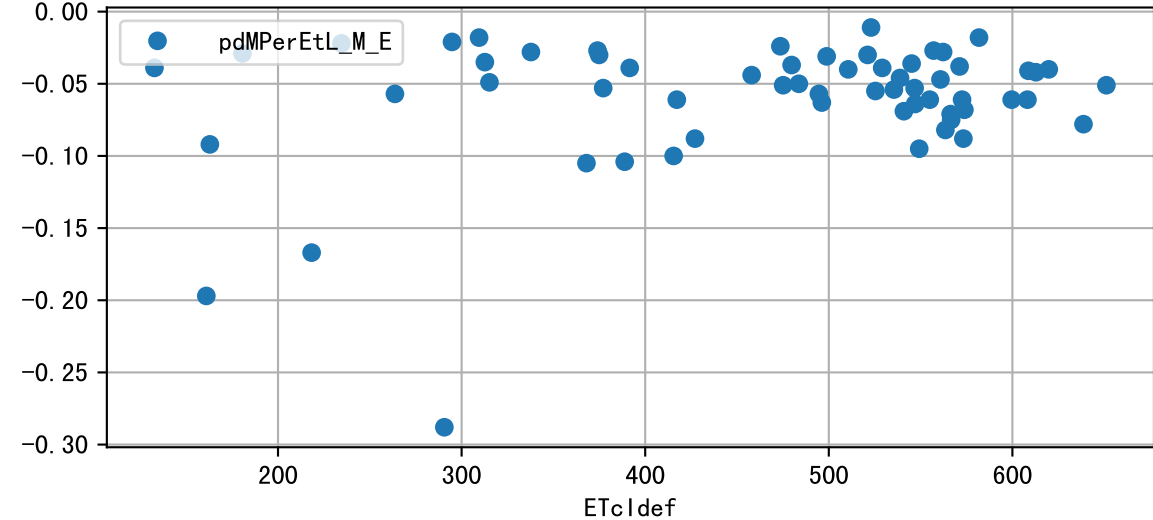
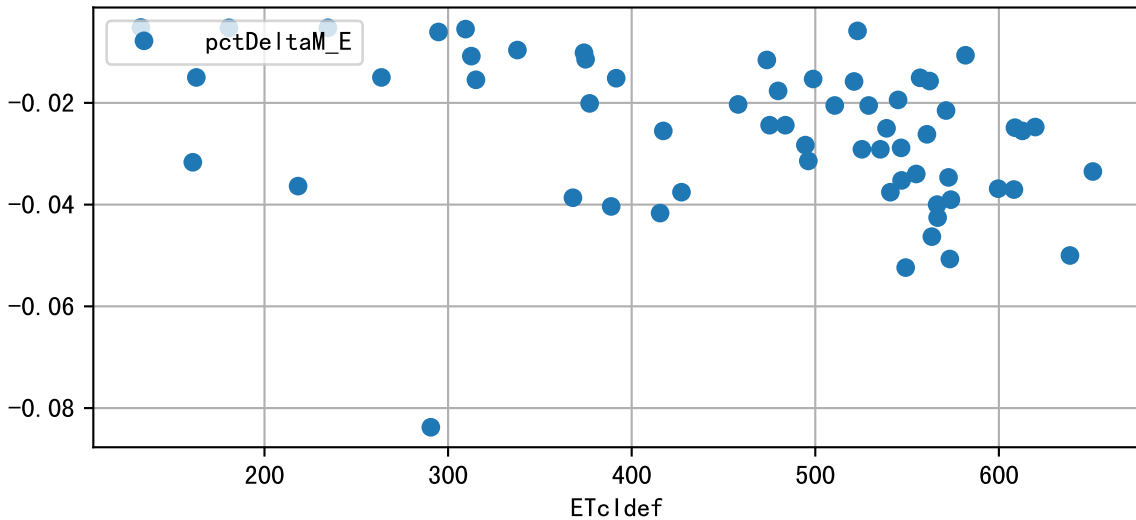
Plot minDeltaM, minDeltaMs, minDeltaMt



Daily %DeltaM and %DeltaM/1000ml ETcIdef for M\_E (-3.1%/D, -6.1%/1000ml ET)

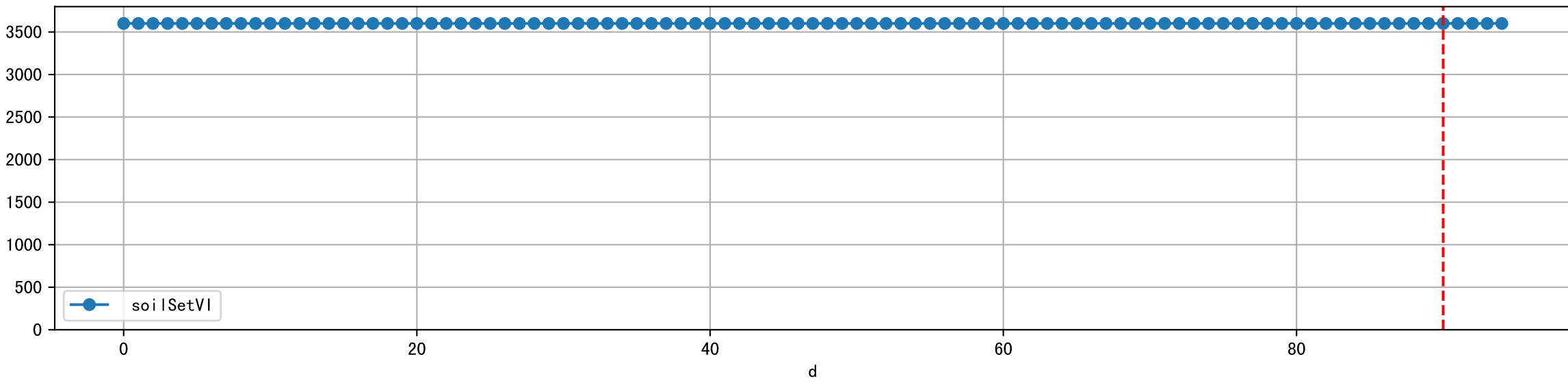
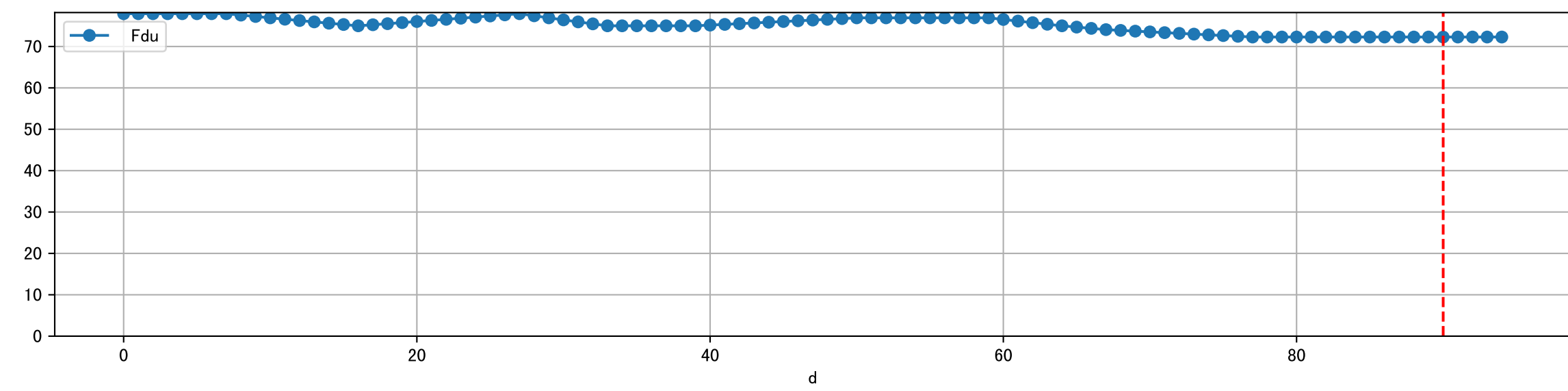
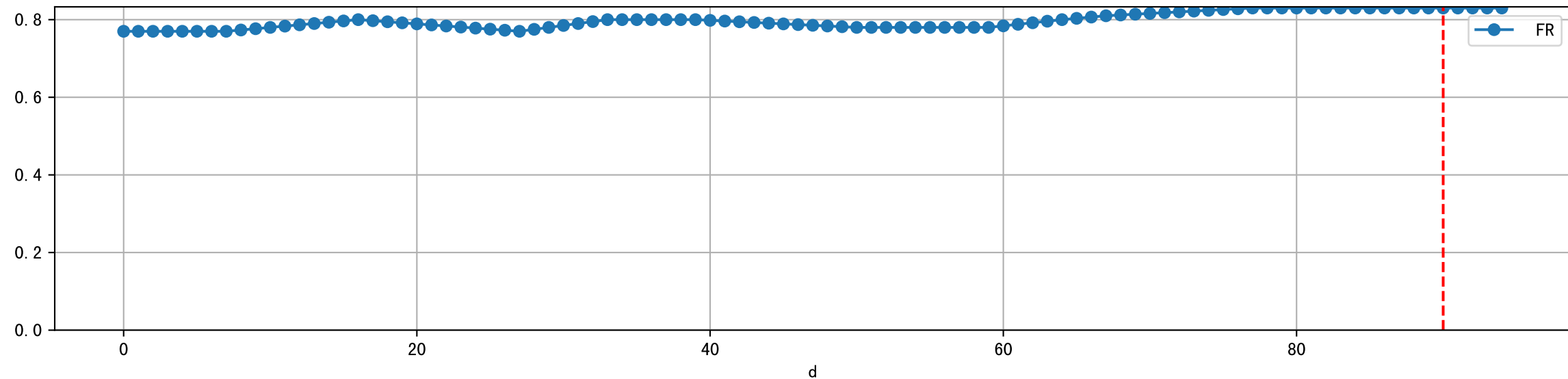


ETcIdef vs pctDeltaM and pdMPerEtL for M\_E

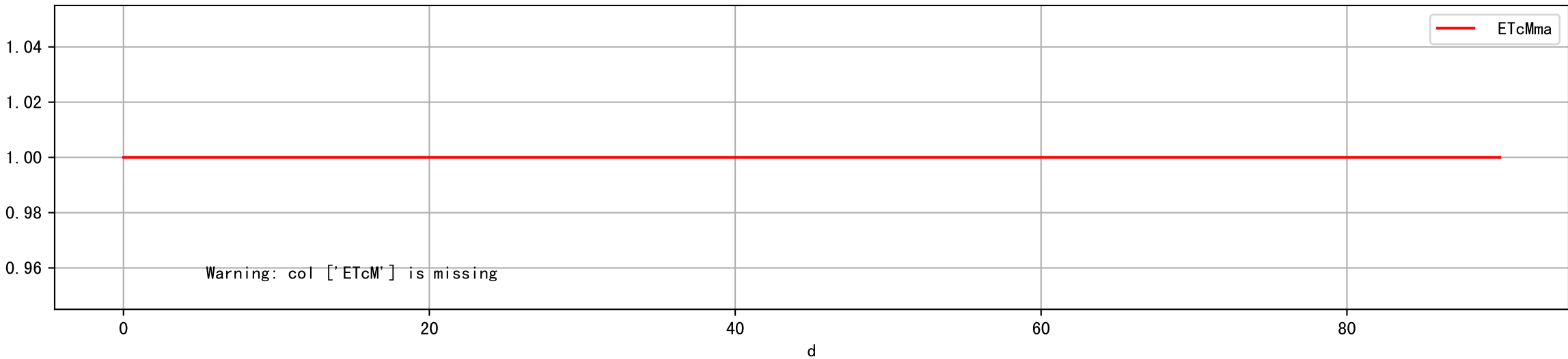


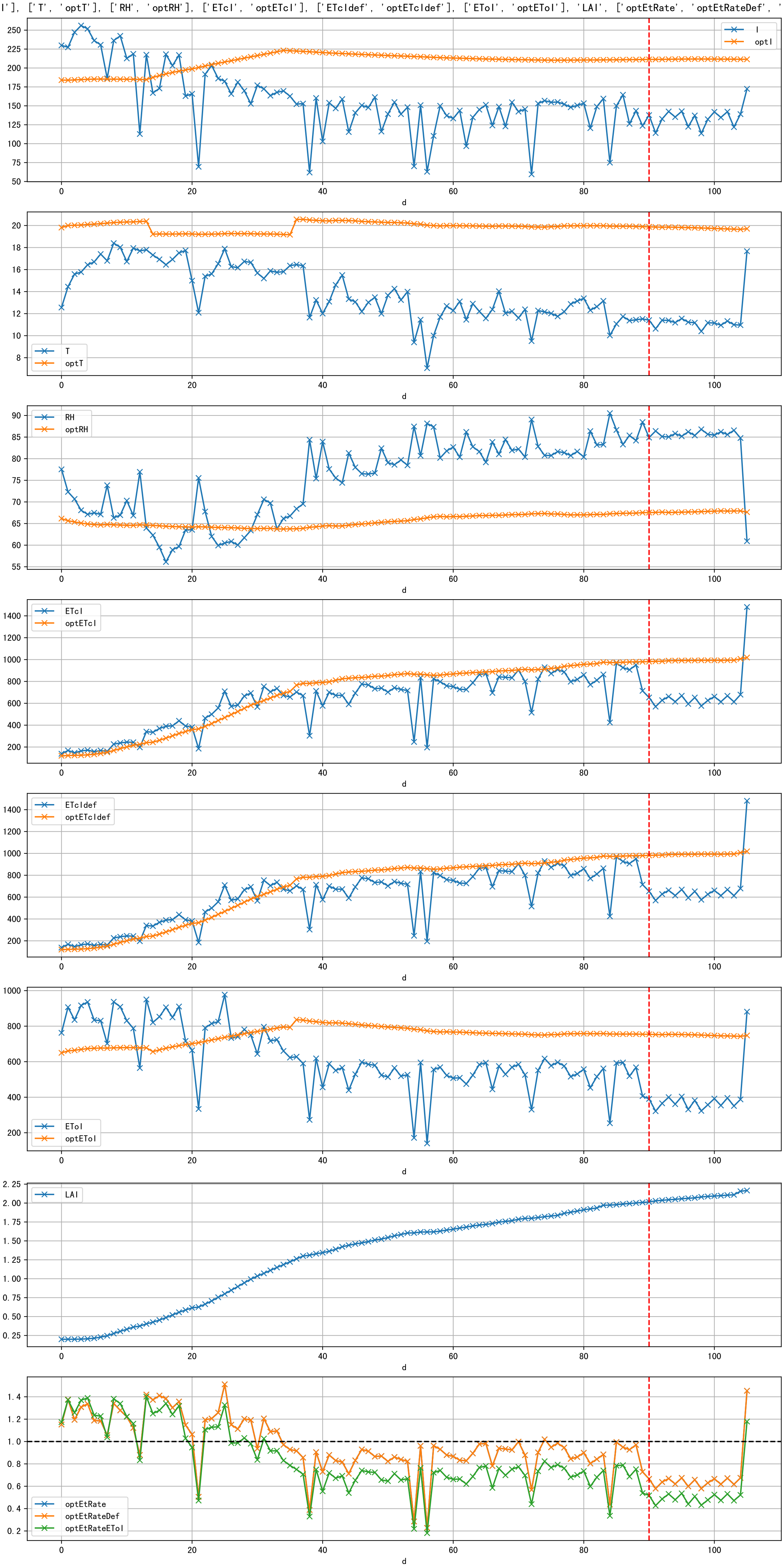


Plot ['FR', 'Fdu', 'soilSetVI']

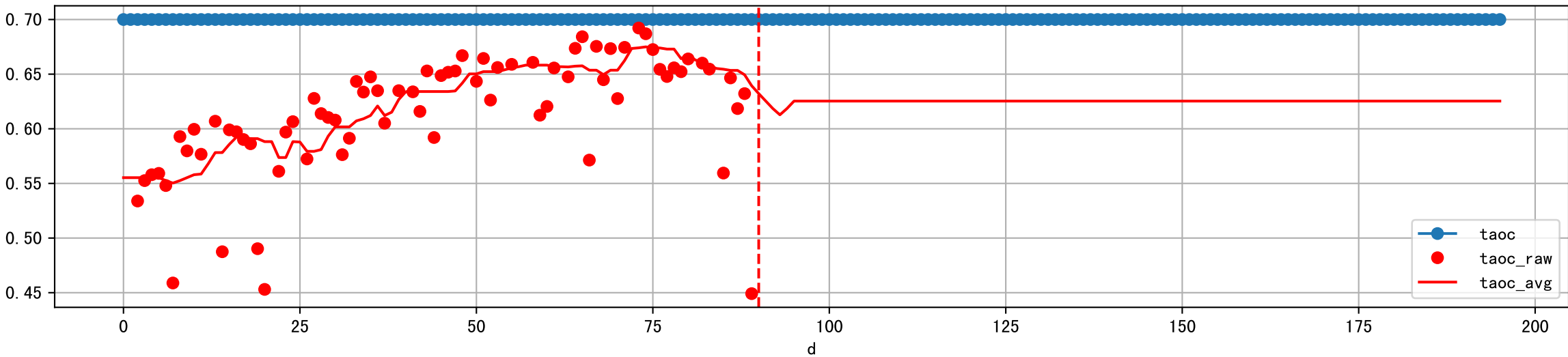


ETcM and ETcMma

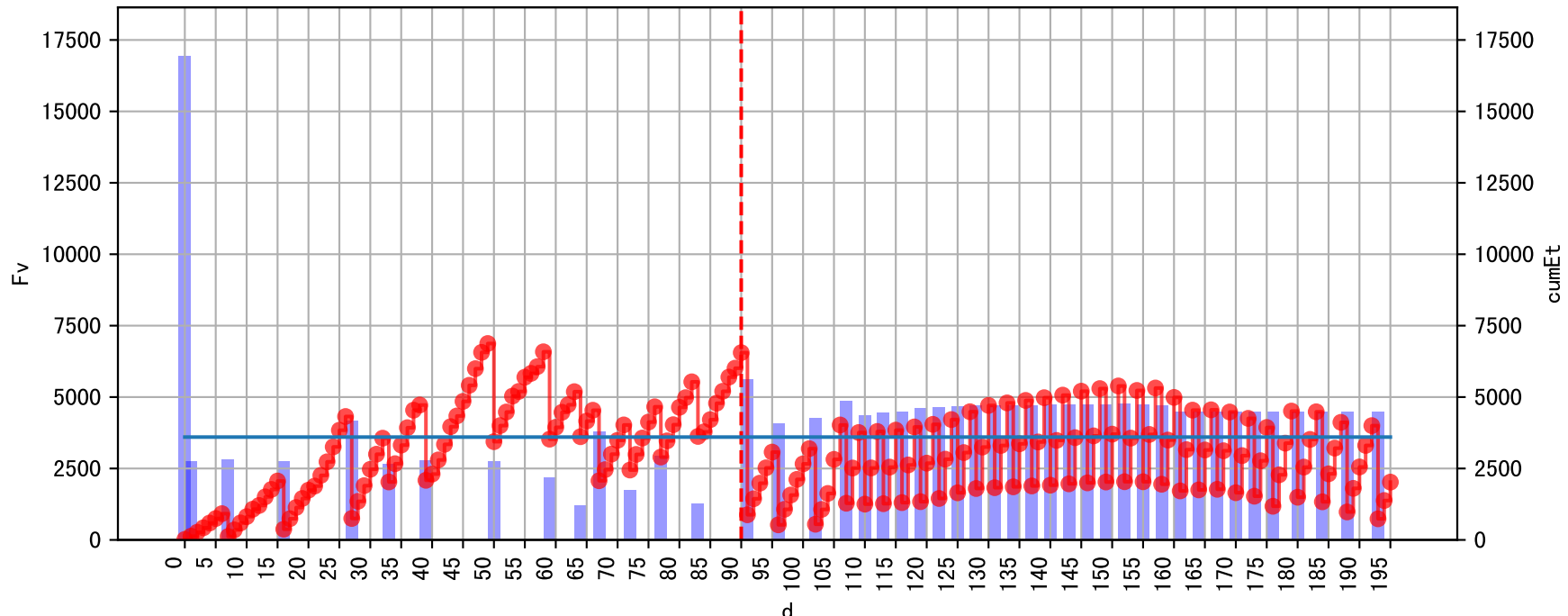


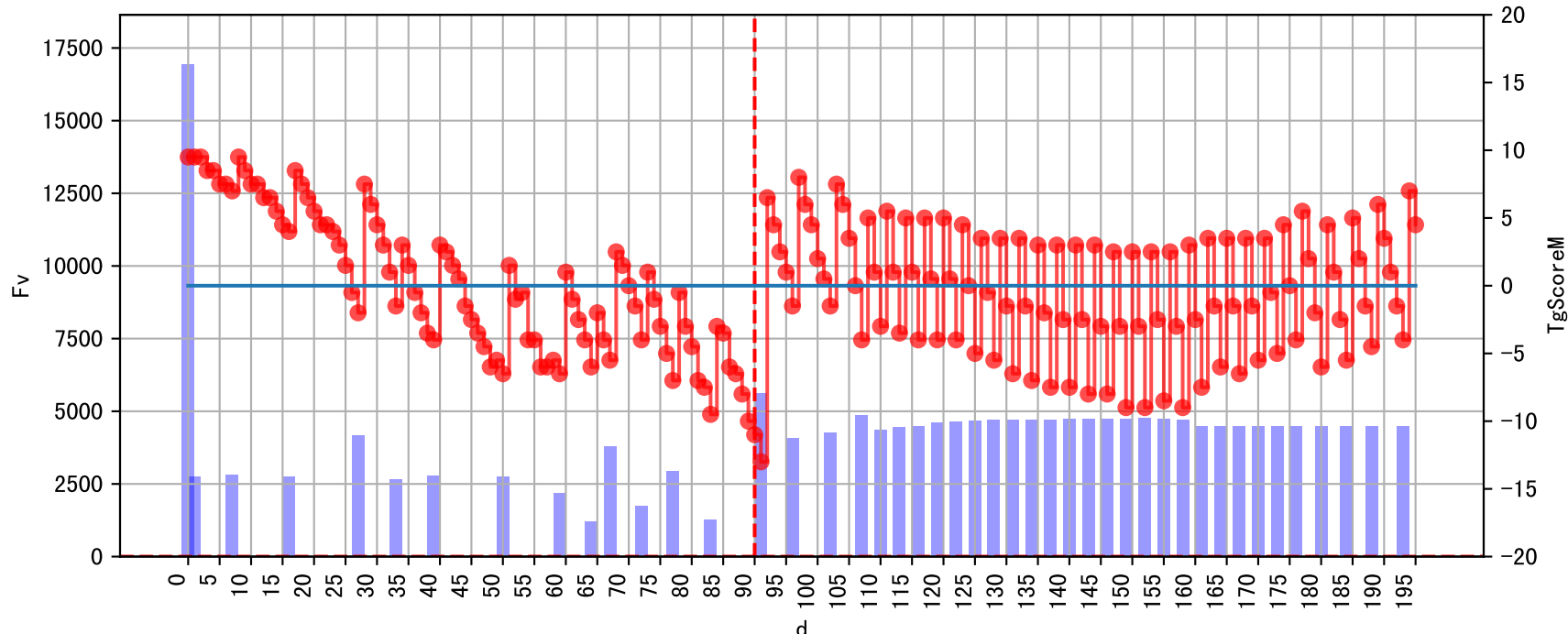


Plot [['taoc', 'taoc\_raw:ro', 'taoc\_avg:r-']]

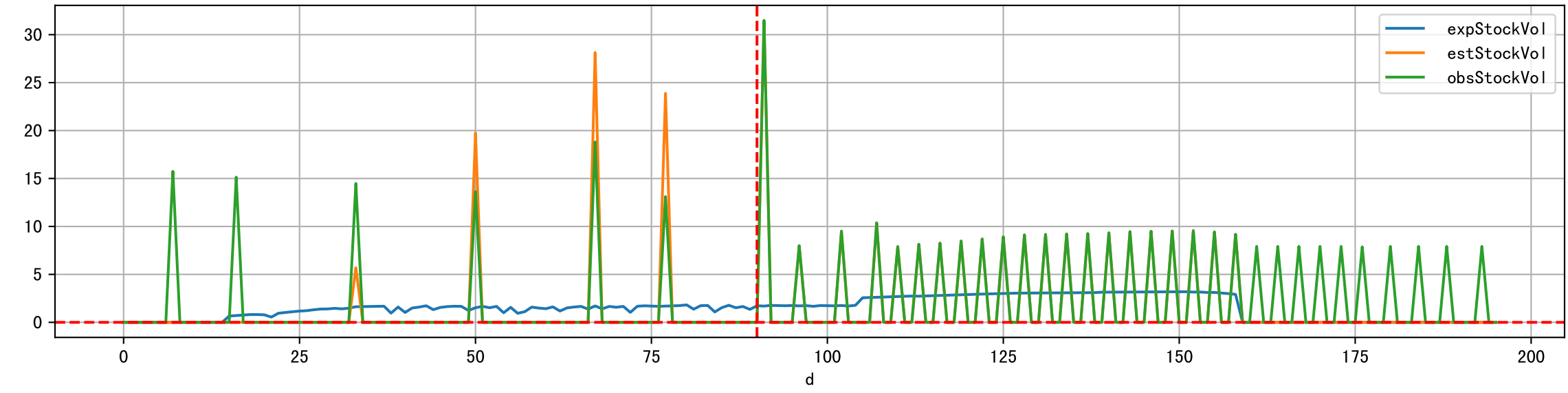
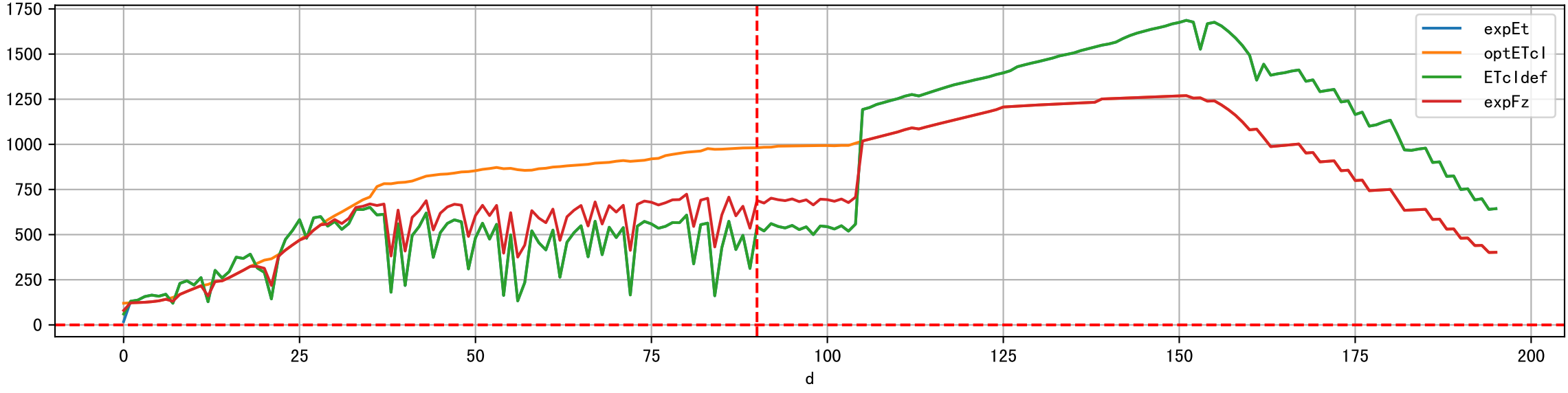
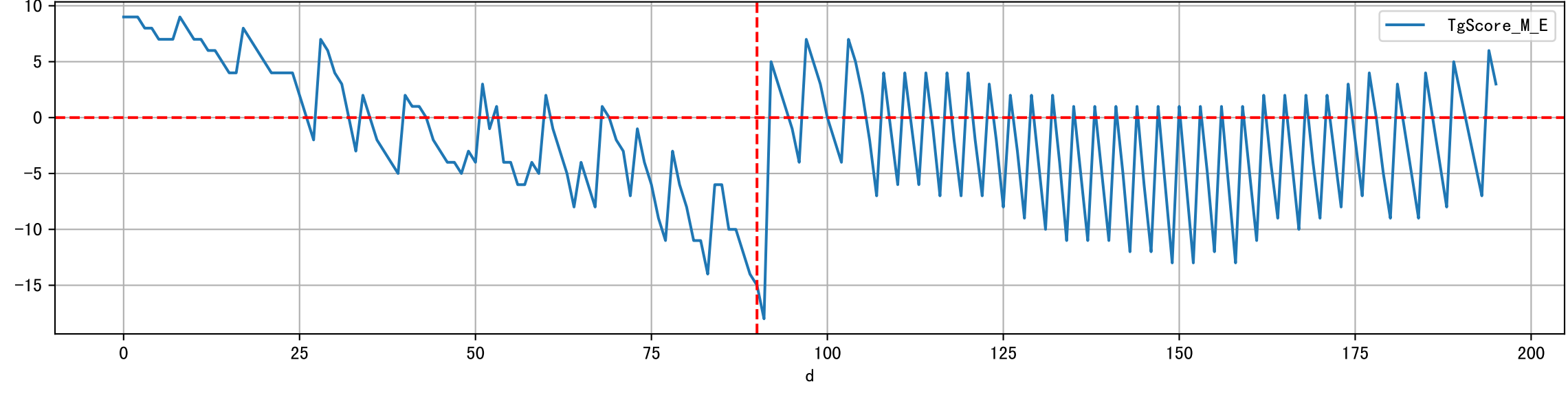
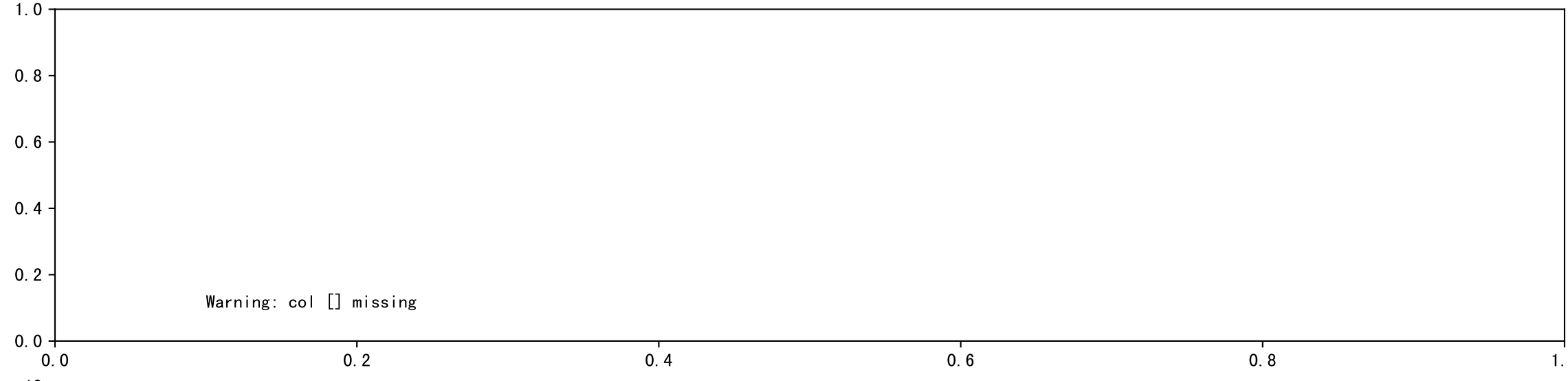
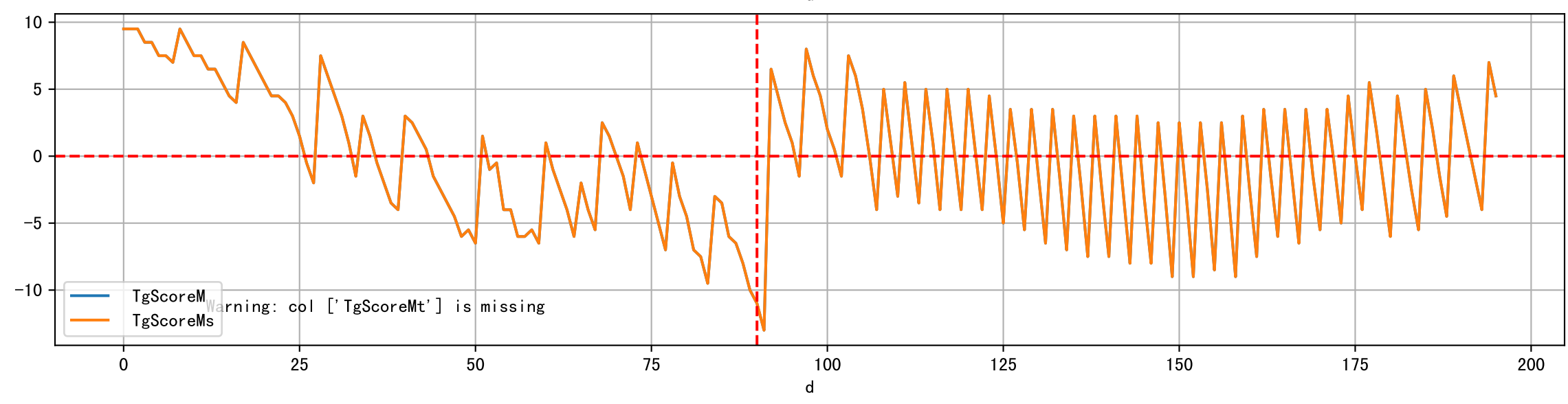
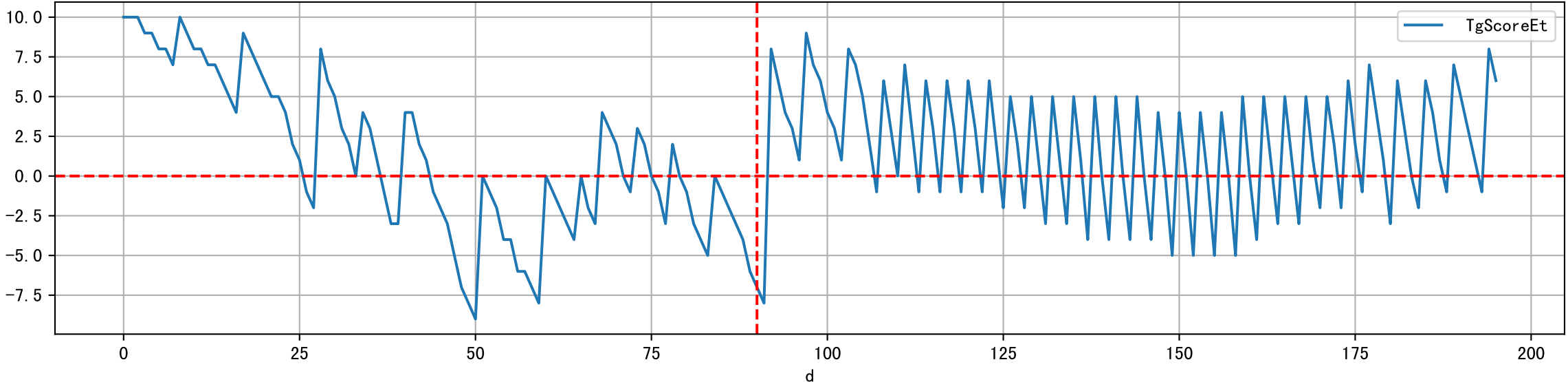


note	fz	fzStockID	expFDF	expEC	preDu	fz
假设未如期灌溉	丰码有品果期肥		nan	nan	0.0	
假设未如期灌溉	丰码有品果期肥		nan	nan	0.0	
假设未如期灌溉	丰码有品果期肥		nan	nan	0.0	
如期灌溉但量少, 灌溉透支3553ml/株, 肥料名缺失(假设只灌清水)	丰码有品果期肥	NA	nan	360.0	0.0	151
假设未如期灌溉	丰码有品果期肥		nan	nan	0.0	
假设未如期灌溉	丰码有品果期肥		nan	nan	0.0	
假设未如期灌溉	丰码有品果期肥		nan	nan	0.0	
假设未如期灌溉	丰码有品果期肥		nan	nan	0.0	
假设未如期灌溉	丰码有品果期肥		nan	nan	0.0	
假设未如期灌溉	丰码有品果期肥		nan	nan	0.0	
推迟(雨天)	丰码有品果期肥		nan	nan	0.0	
预期灌溉, 灌溉透支1874ml/株	丰码有品果期肥	1063	125.8	1625.0	1707.0	477
预期灌溉	丰码有品果期肥	1063	405.6	804.0	700.0	390
预期灌溉	丰码有品果期肥	1063	340.7	864.0	933.0	390
预期灌溉	丰码有品果期肥	TBD	381.6	807.0	786.0	477

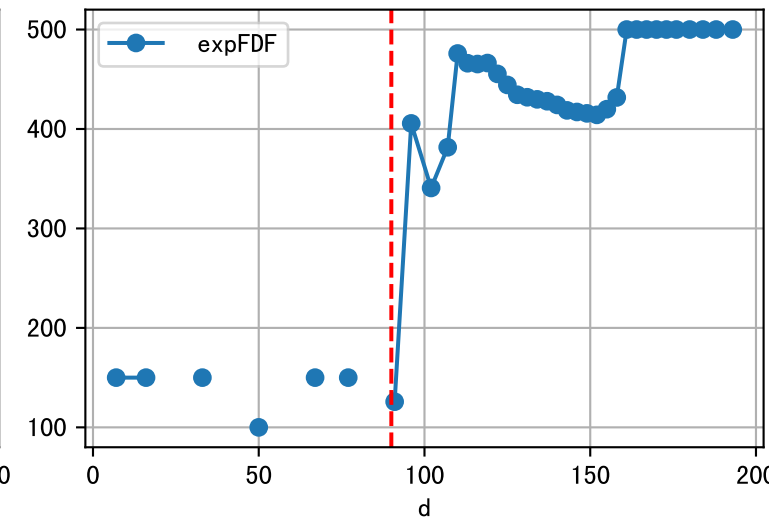
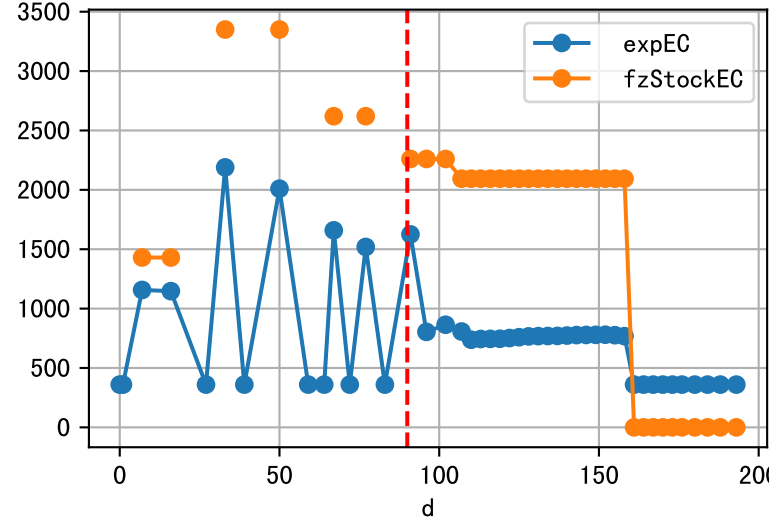
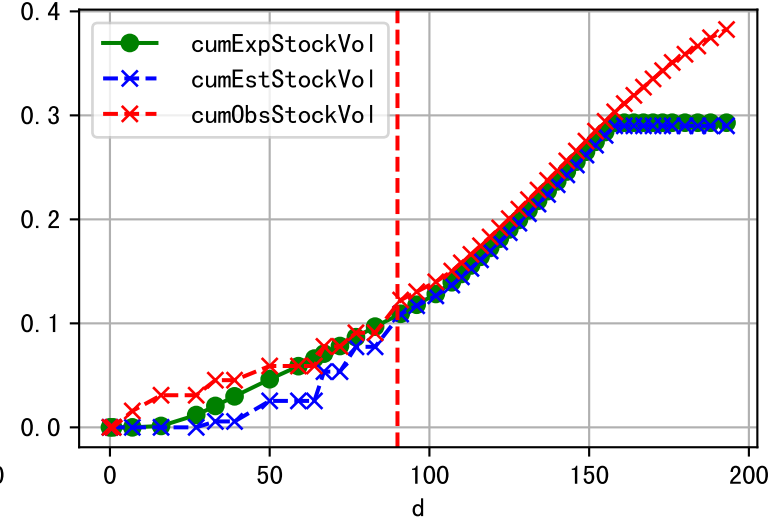
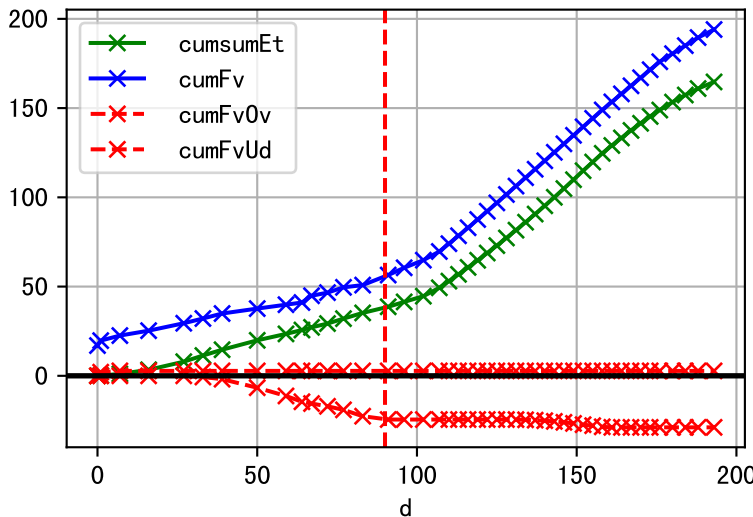


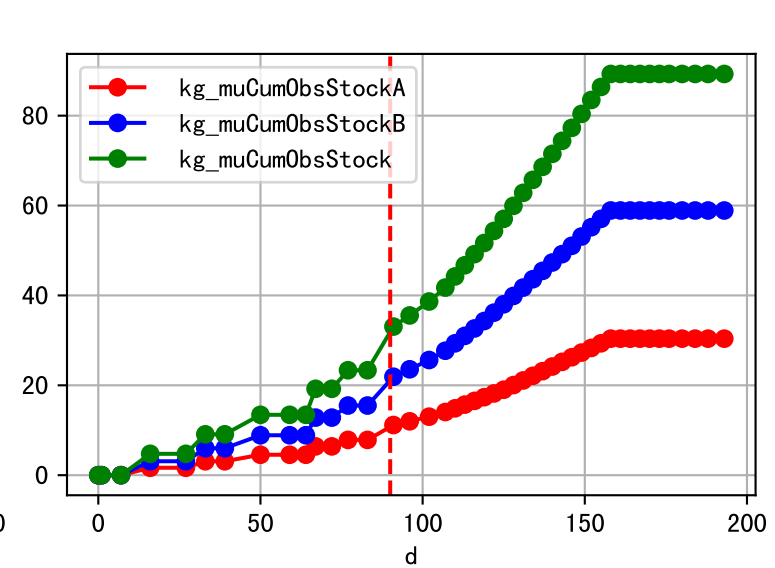
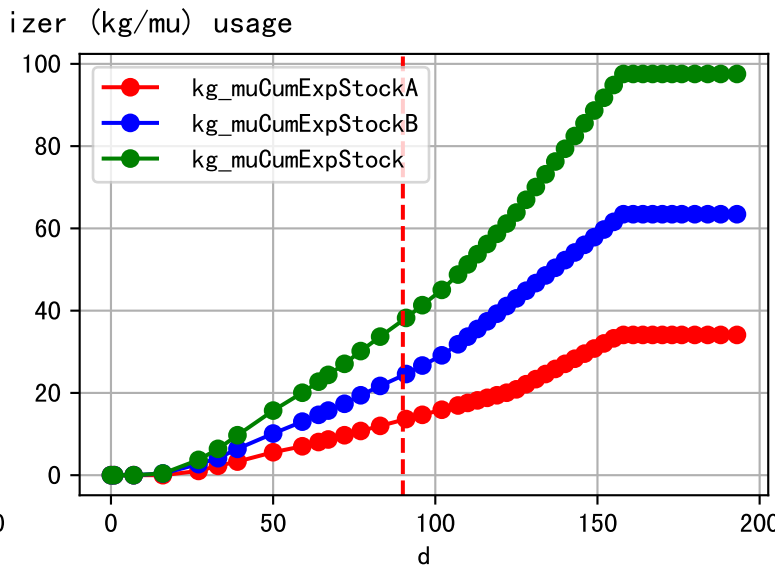
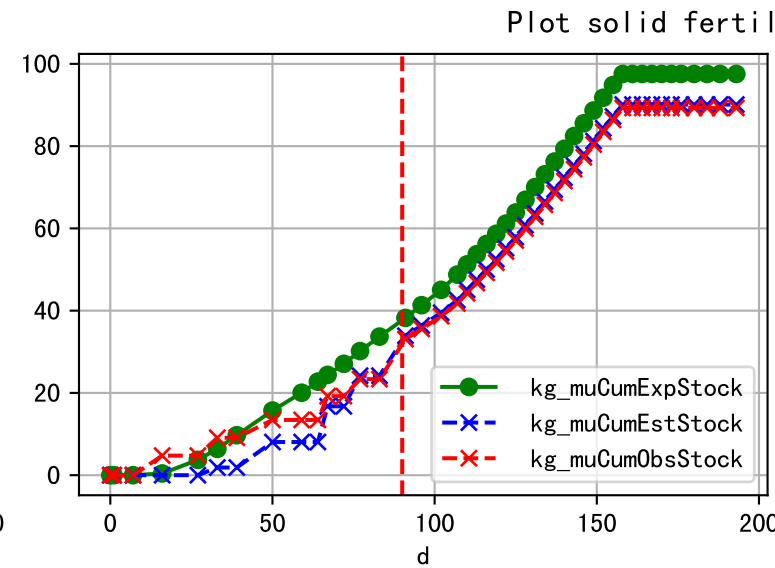
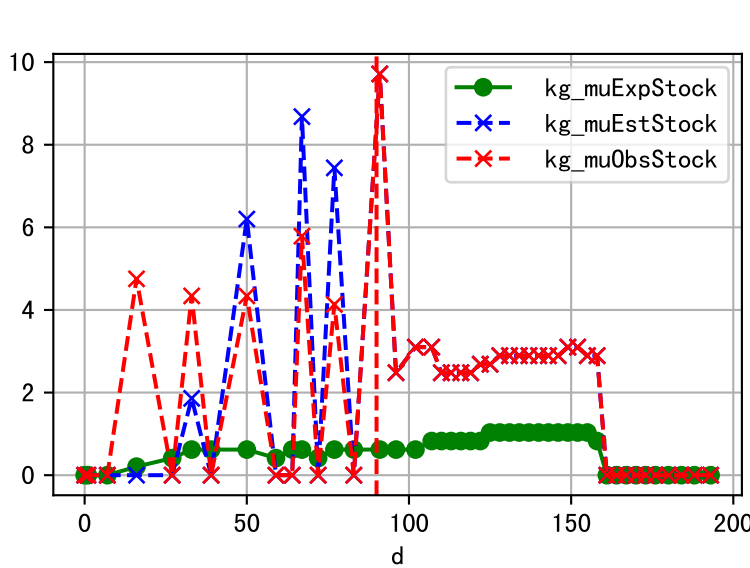


Fg Trigger Score (by Et and sensor)



Plot liquid fertilizer usage





Fertilizer Range Source: kerleyL, kerleyH, UnivFL, TNAI, Haifa

