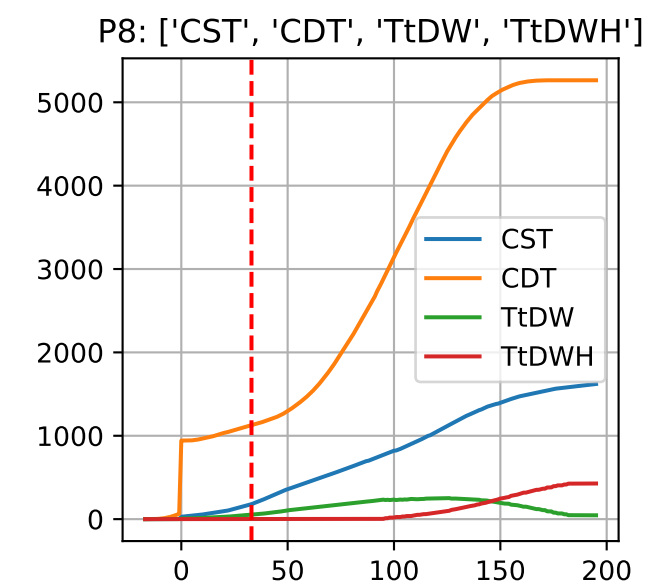
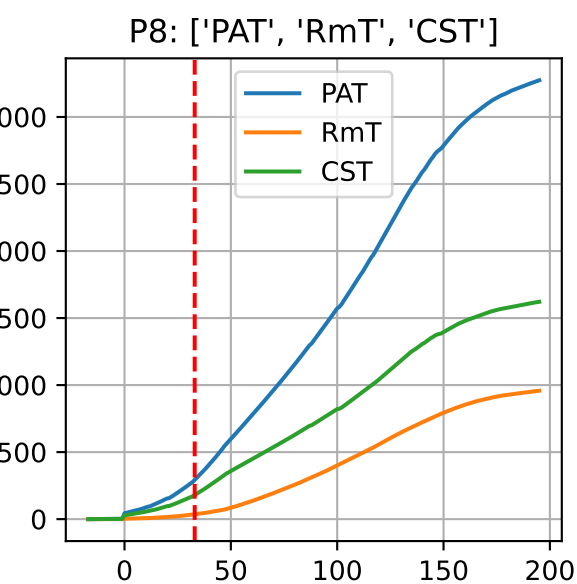
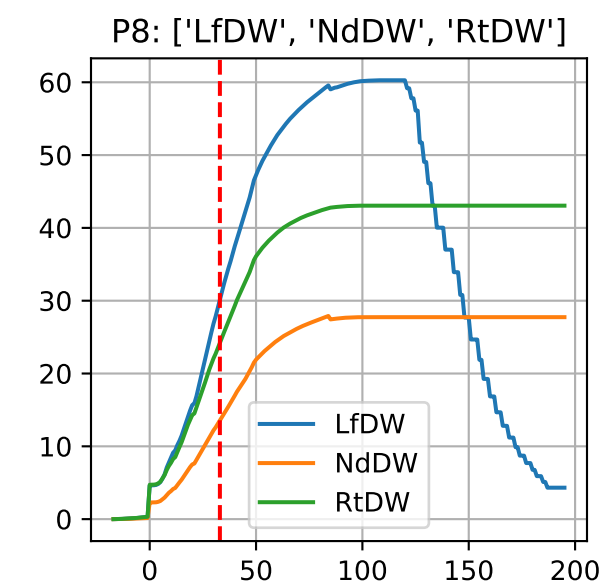
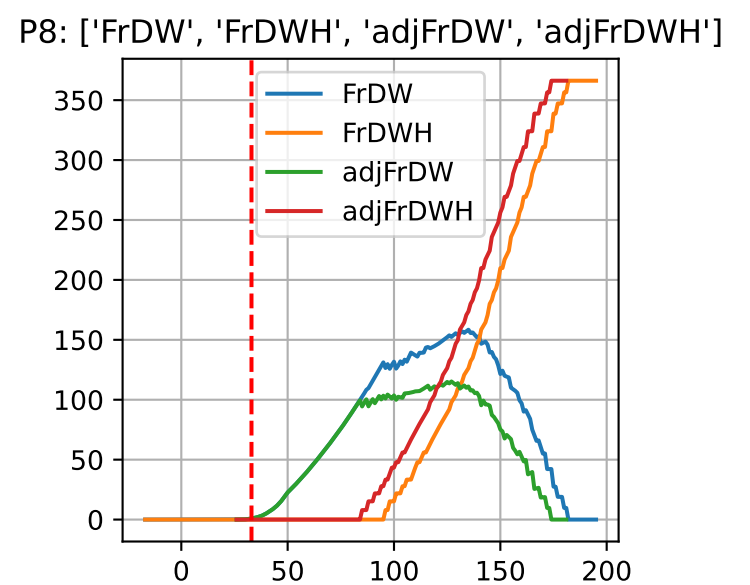
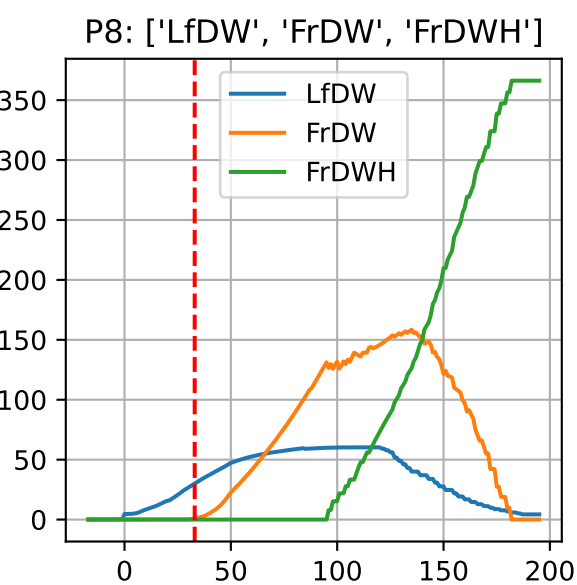
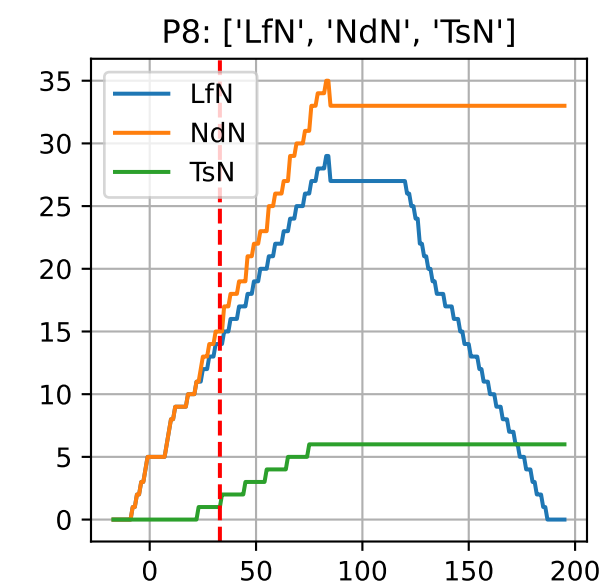
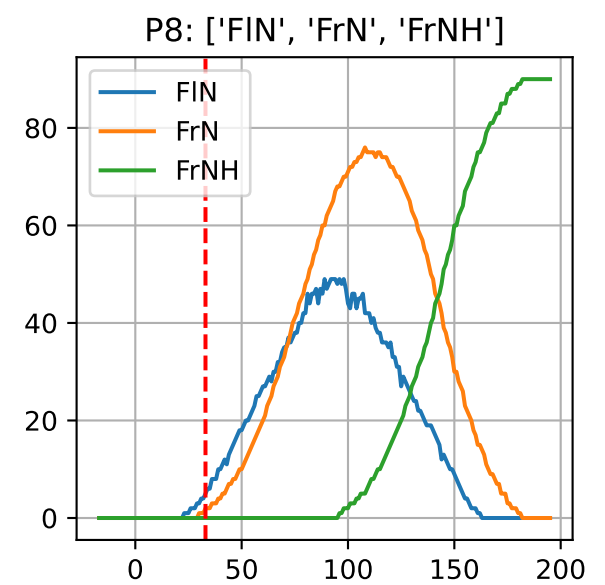
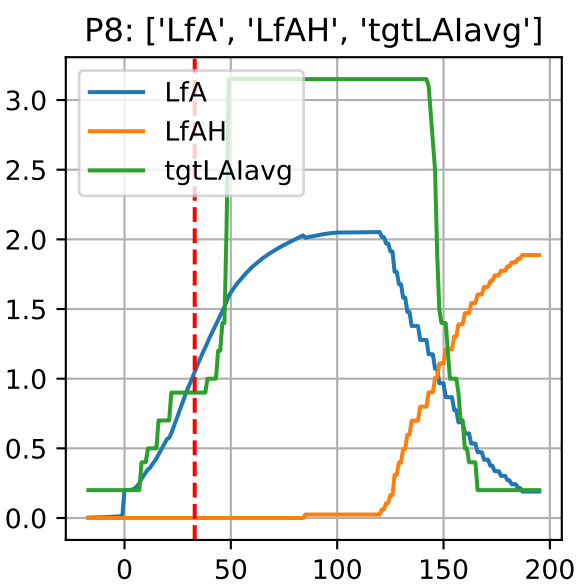
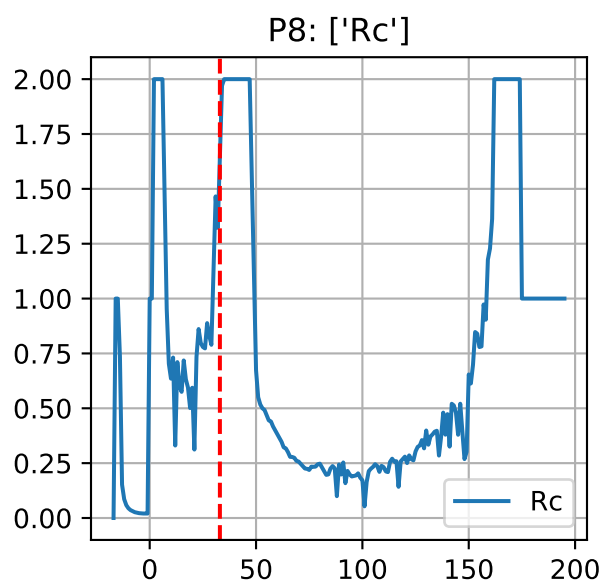
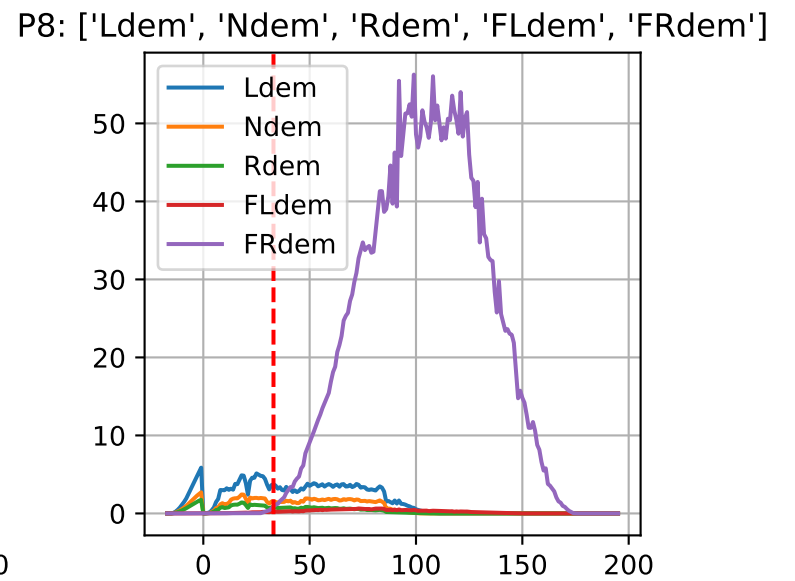
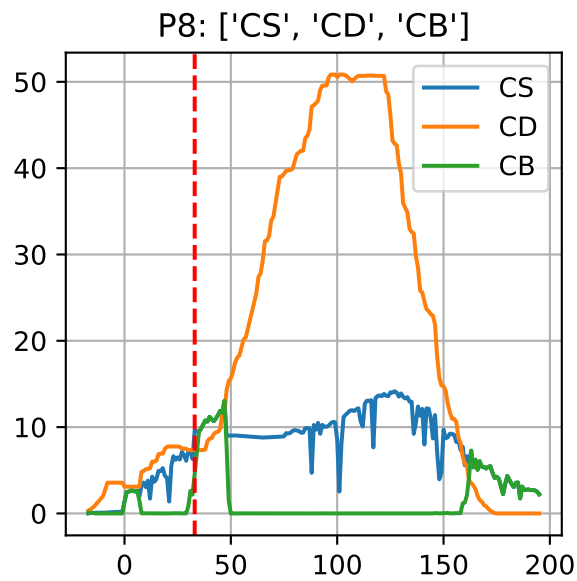
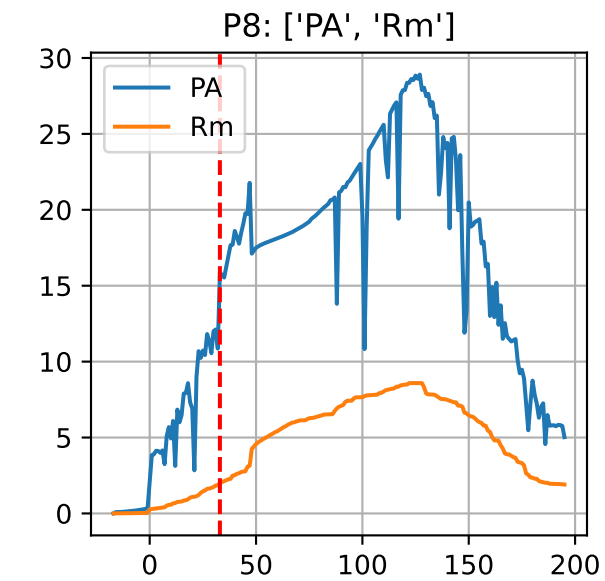
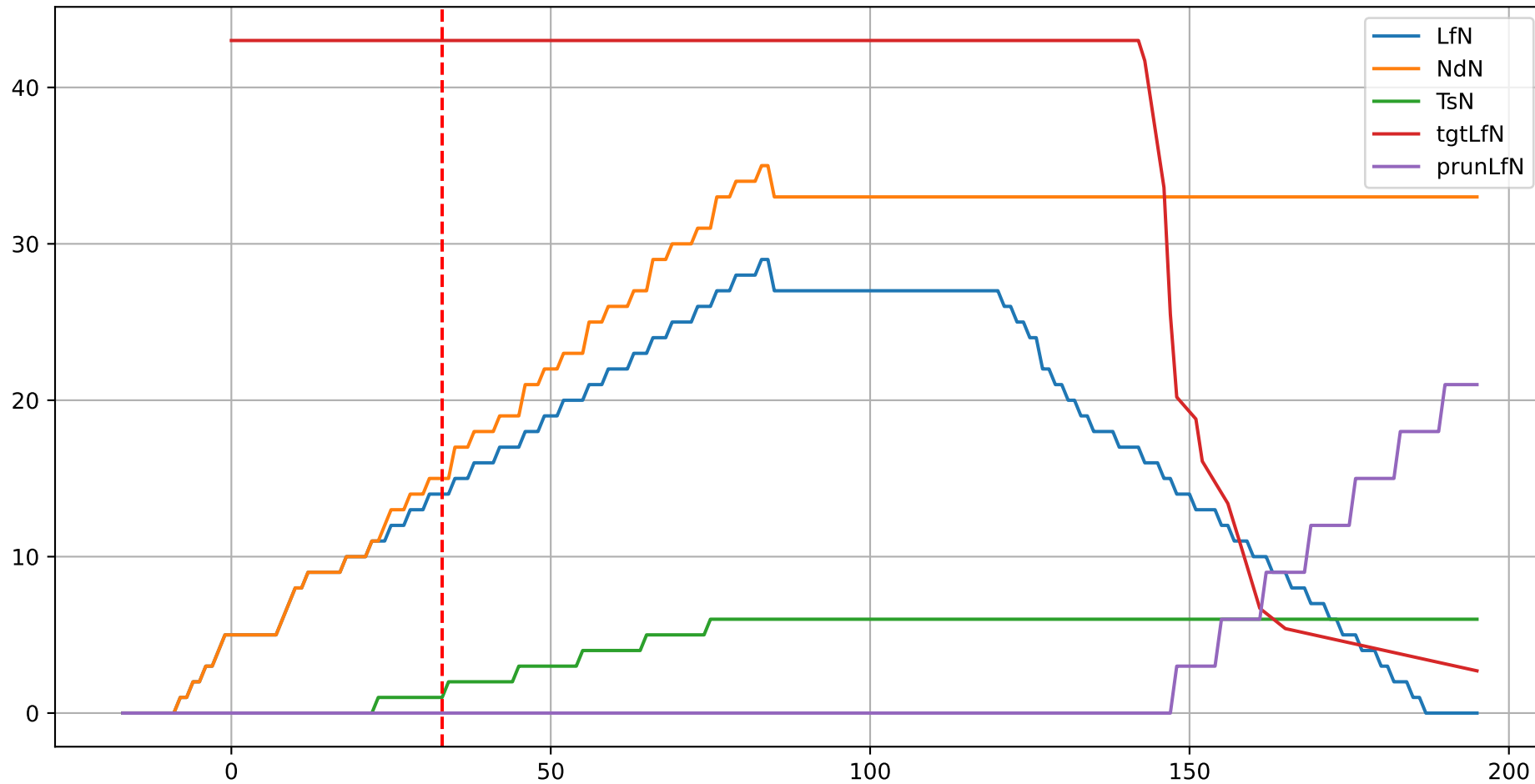


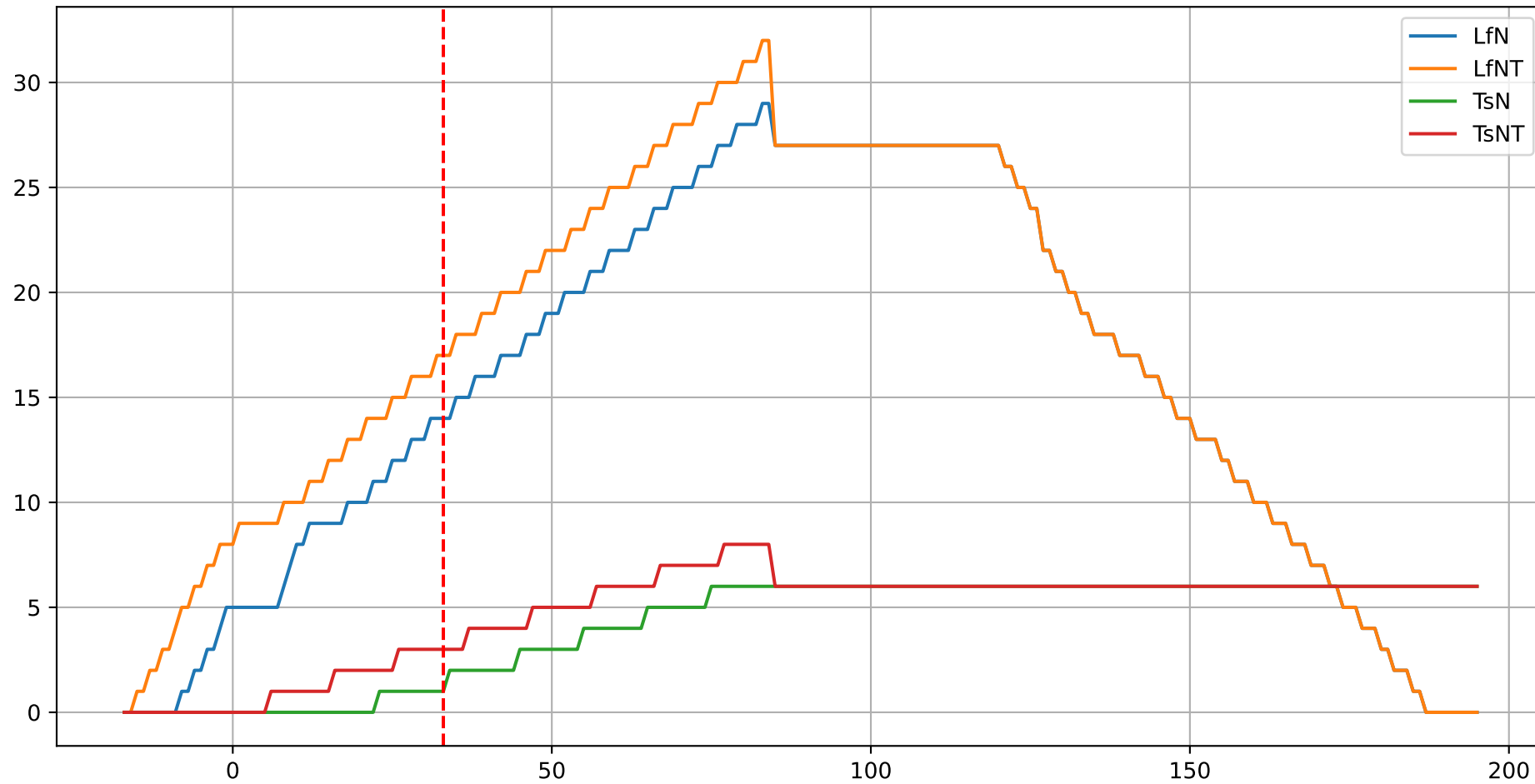
Model Prediction (P8)



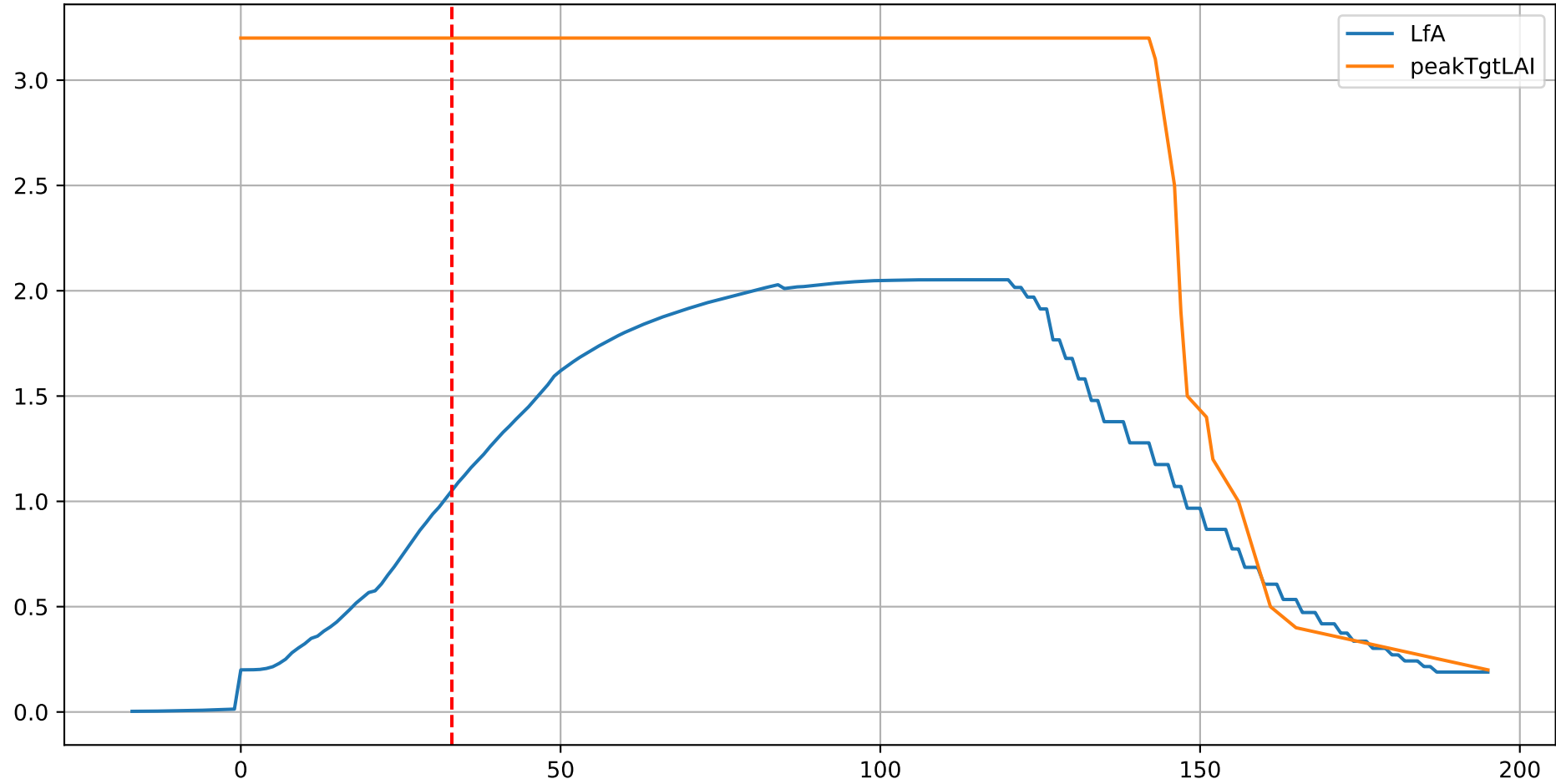
P8: ['LfN', 'NdN', 'TsN', 'tgtLfN', 'prunLfN']



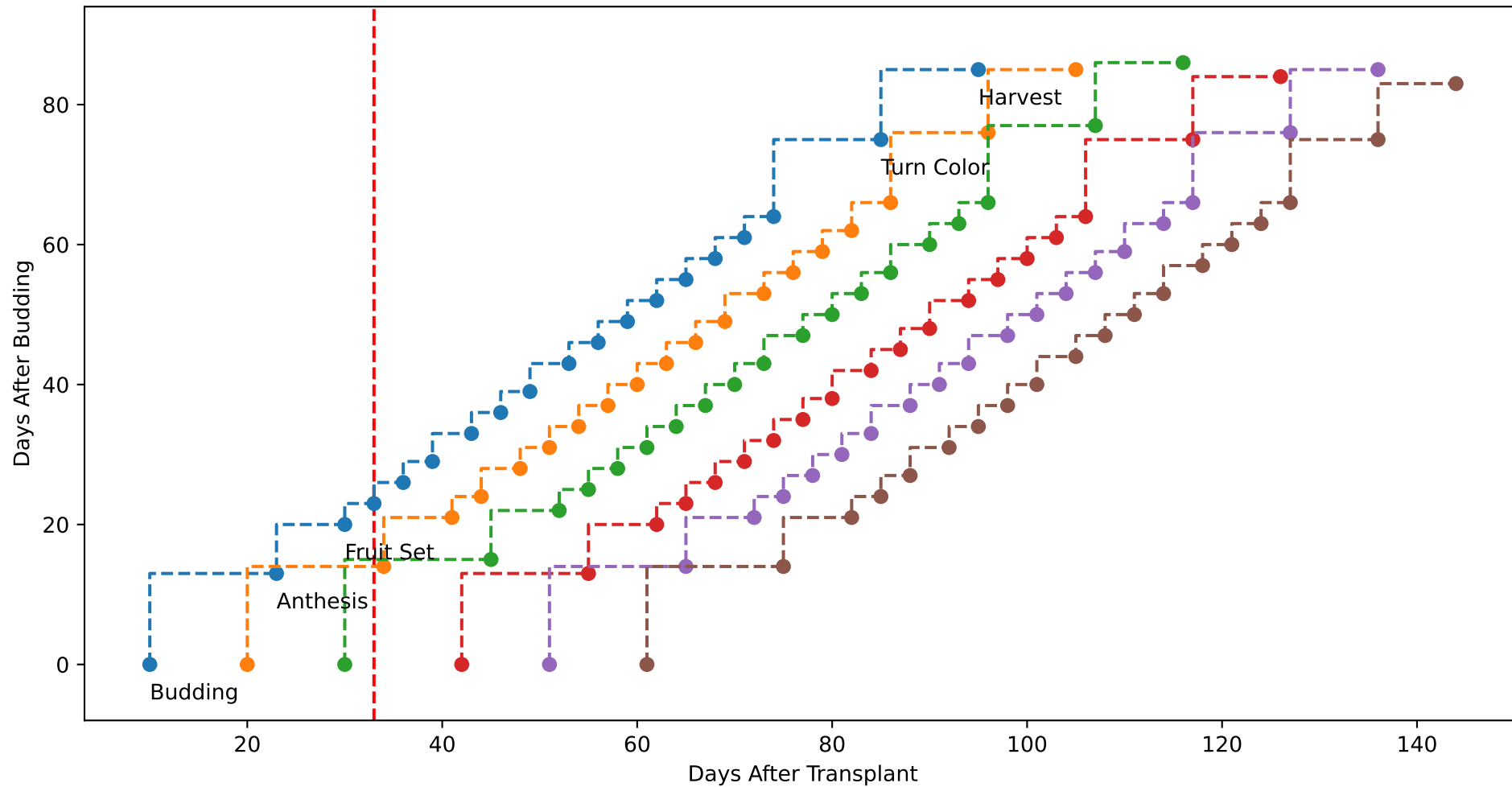
P8: ['LfN', 'LfNT', 'TsN', 'TsNT']



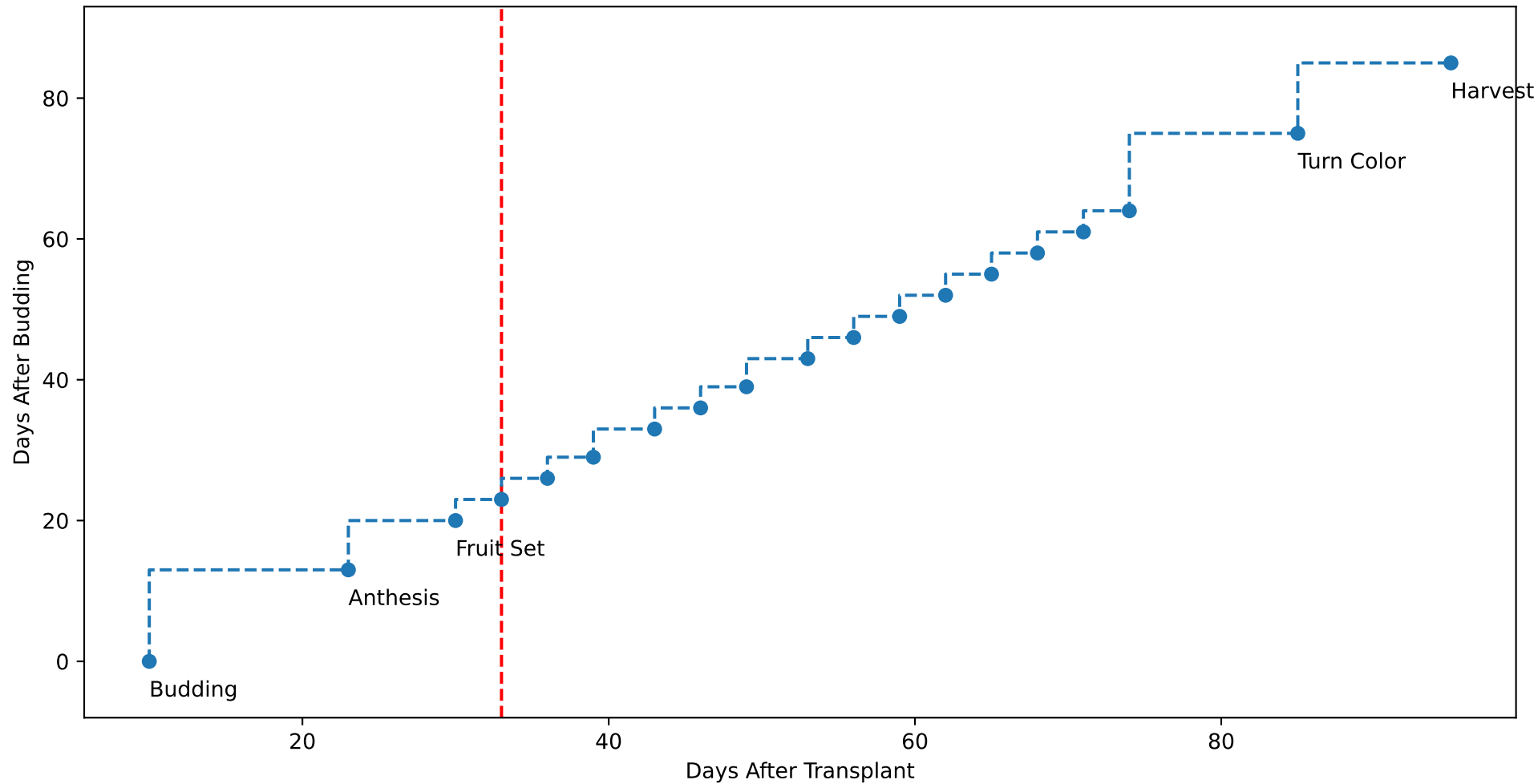
P8: ['LfA', 'peakTgtLAI']



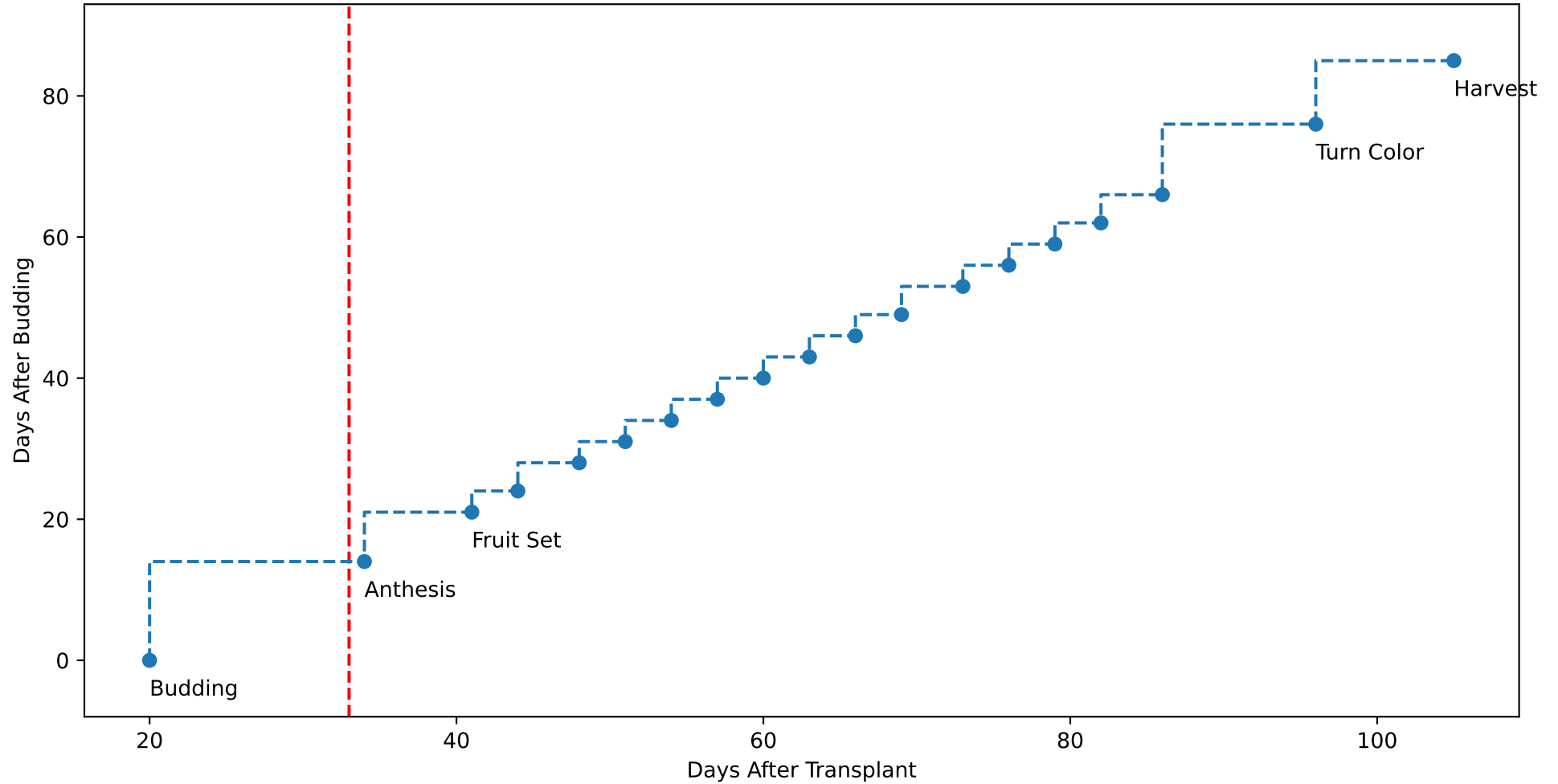
P8 (plot by DAT)



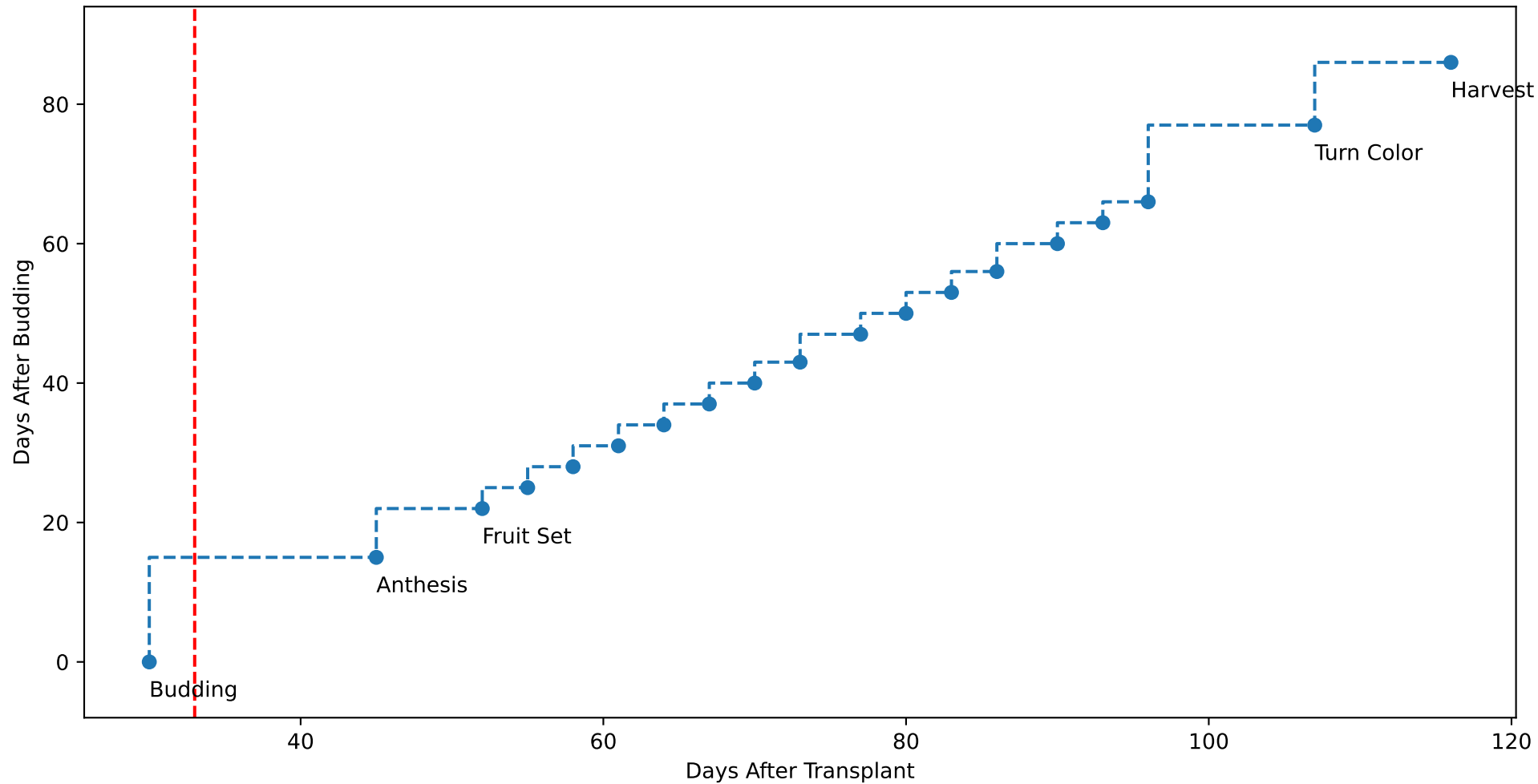
P8 TsN1 (plot by DAT)



P8 TsN2 (plot by DAT)

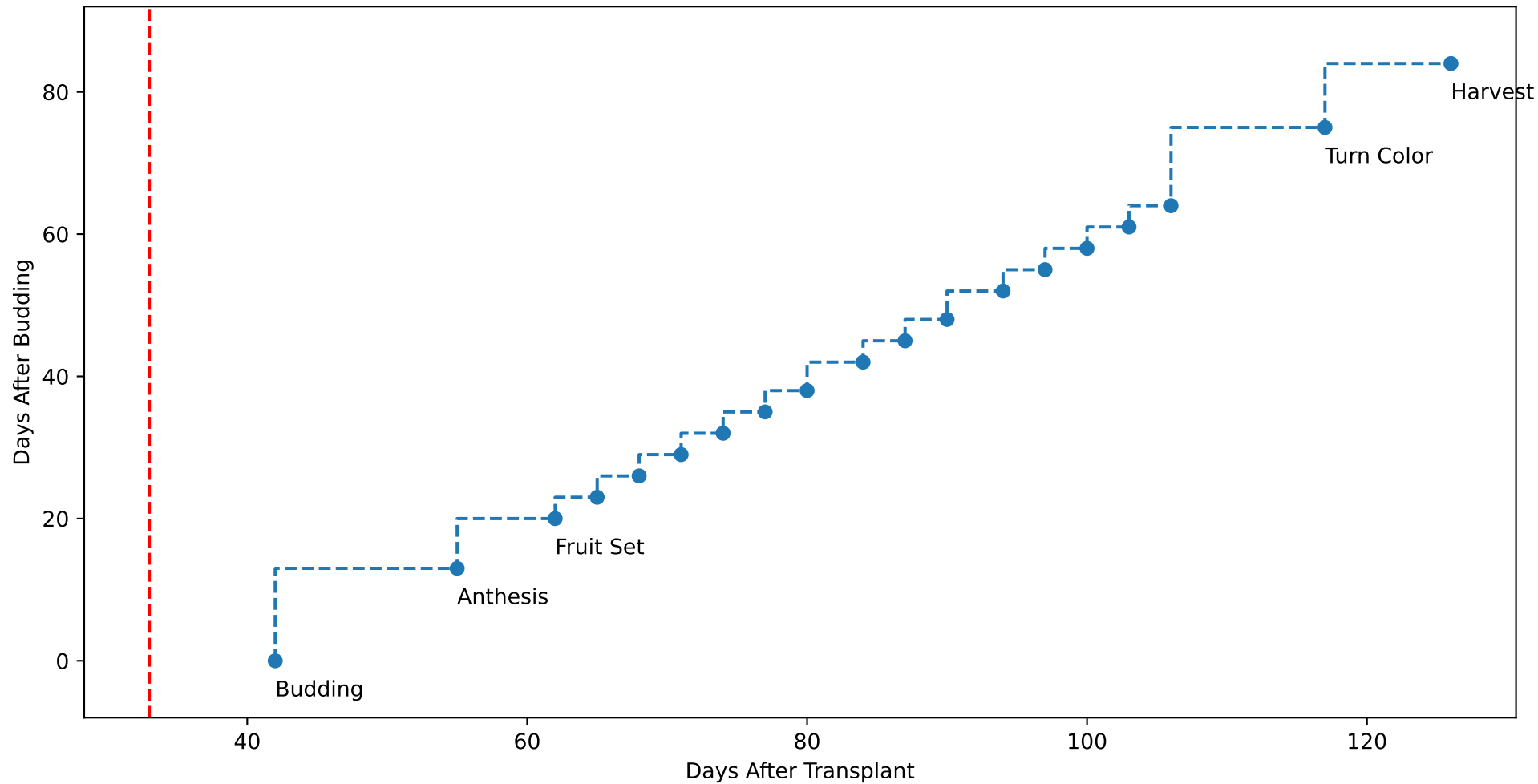


P8 TsN3 (plot by DAT)

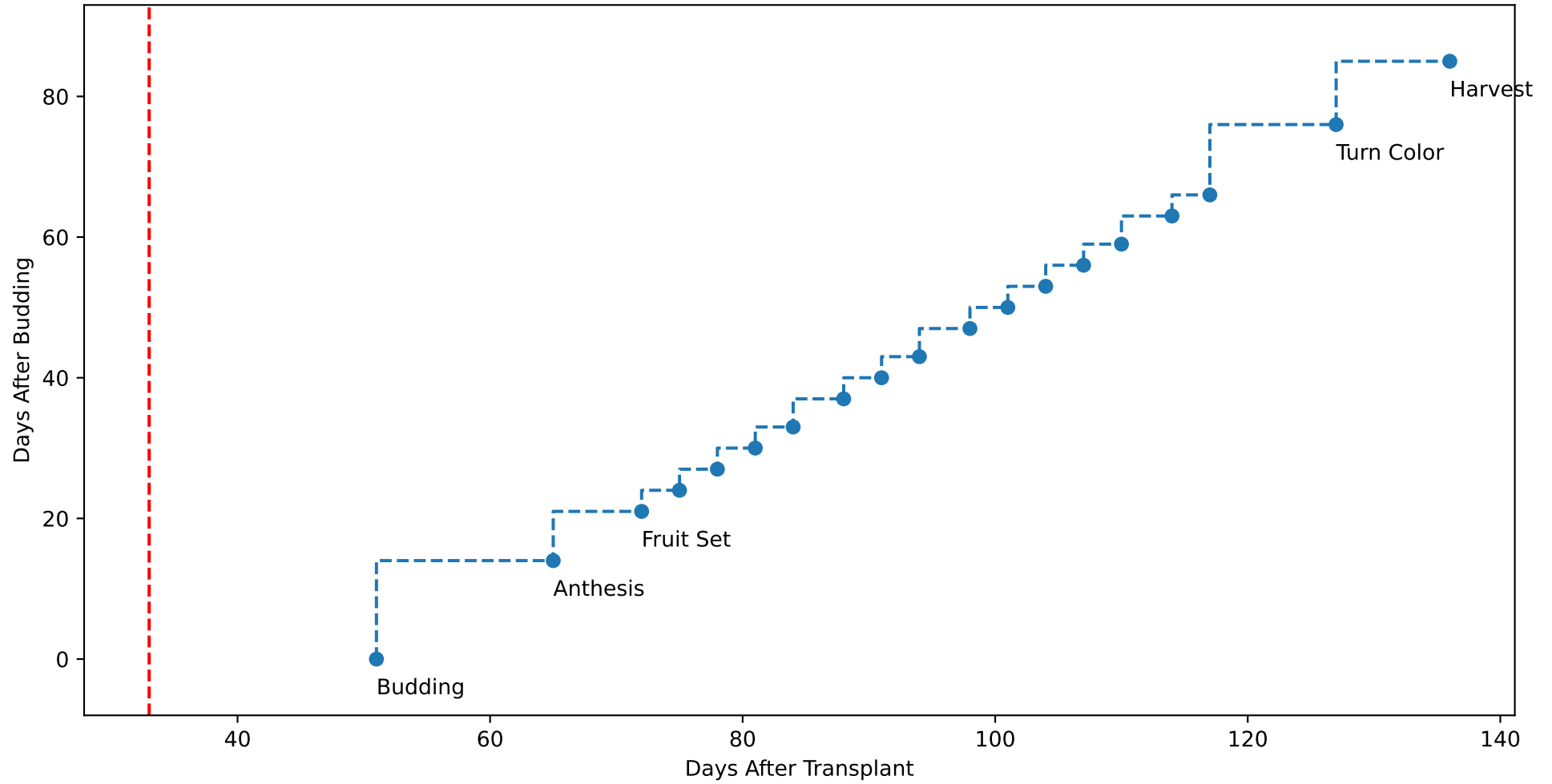




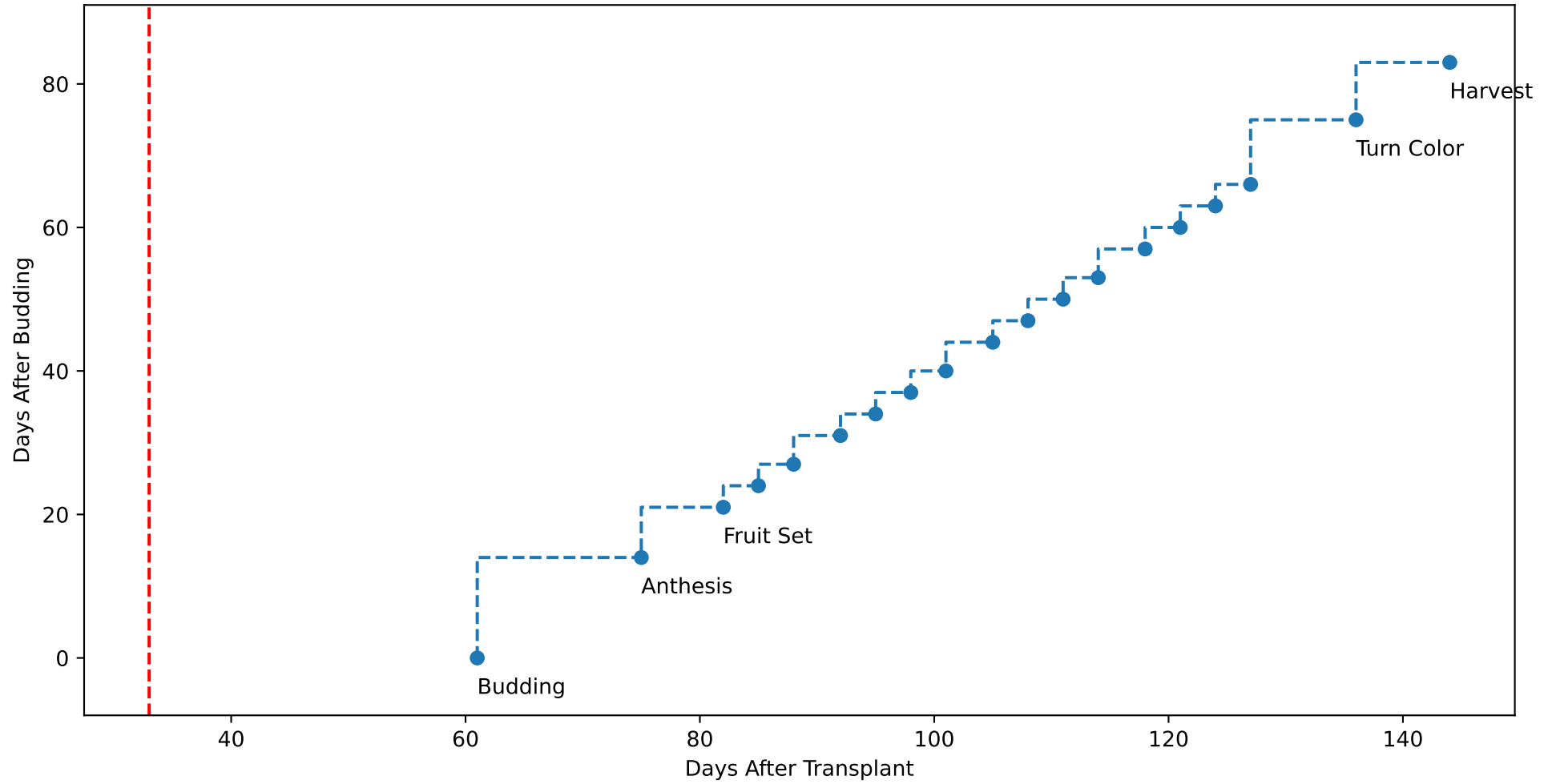
P8 TsN4 (plot by DAT)



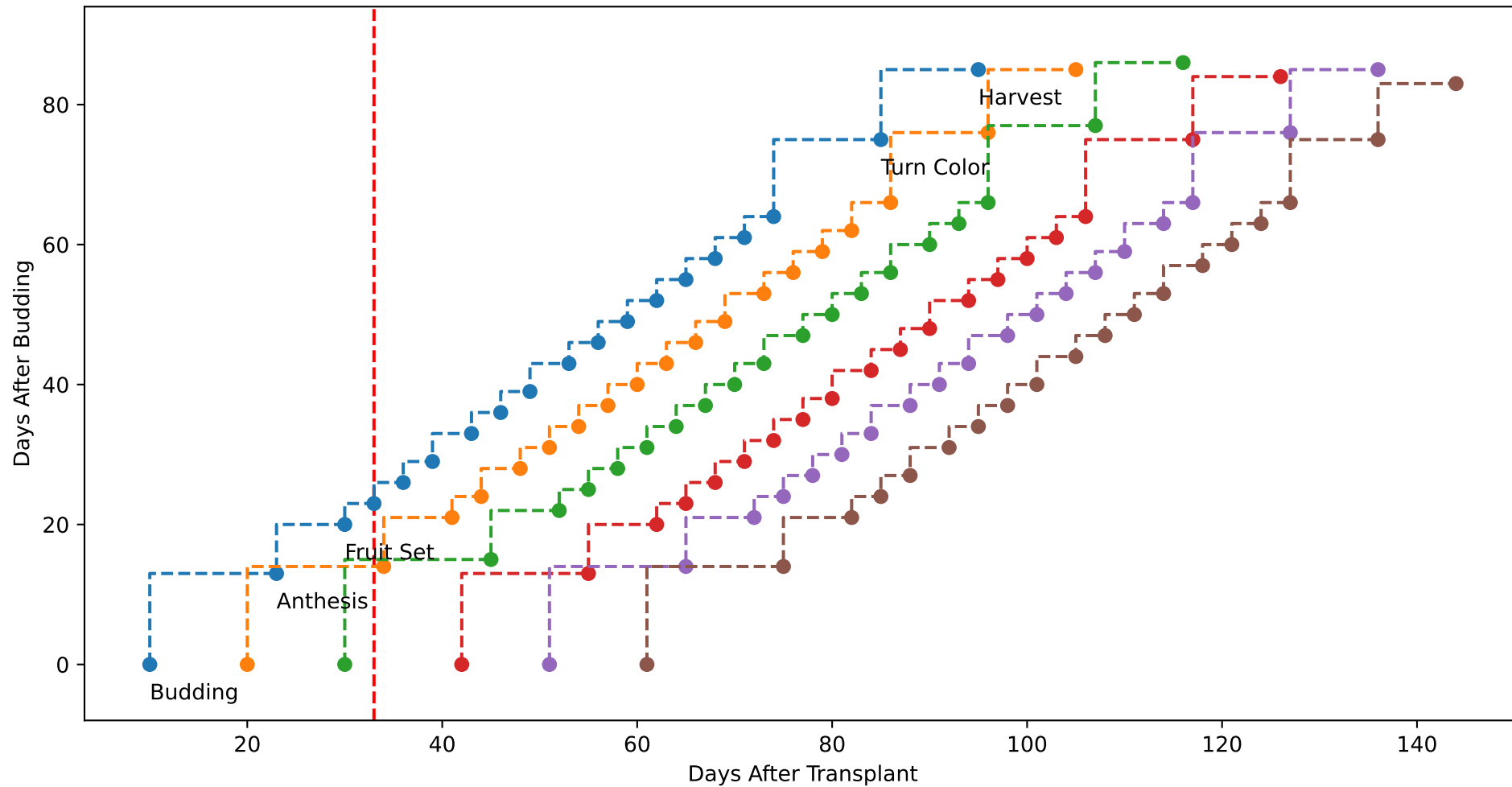
P8 TsN5 (plot by DAT)



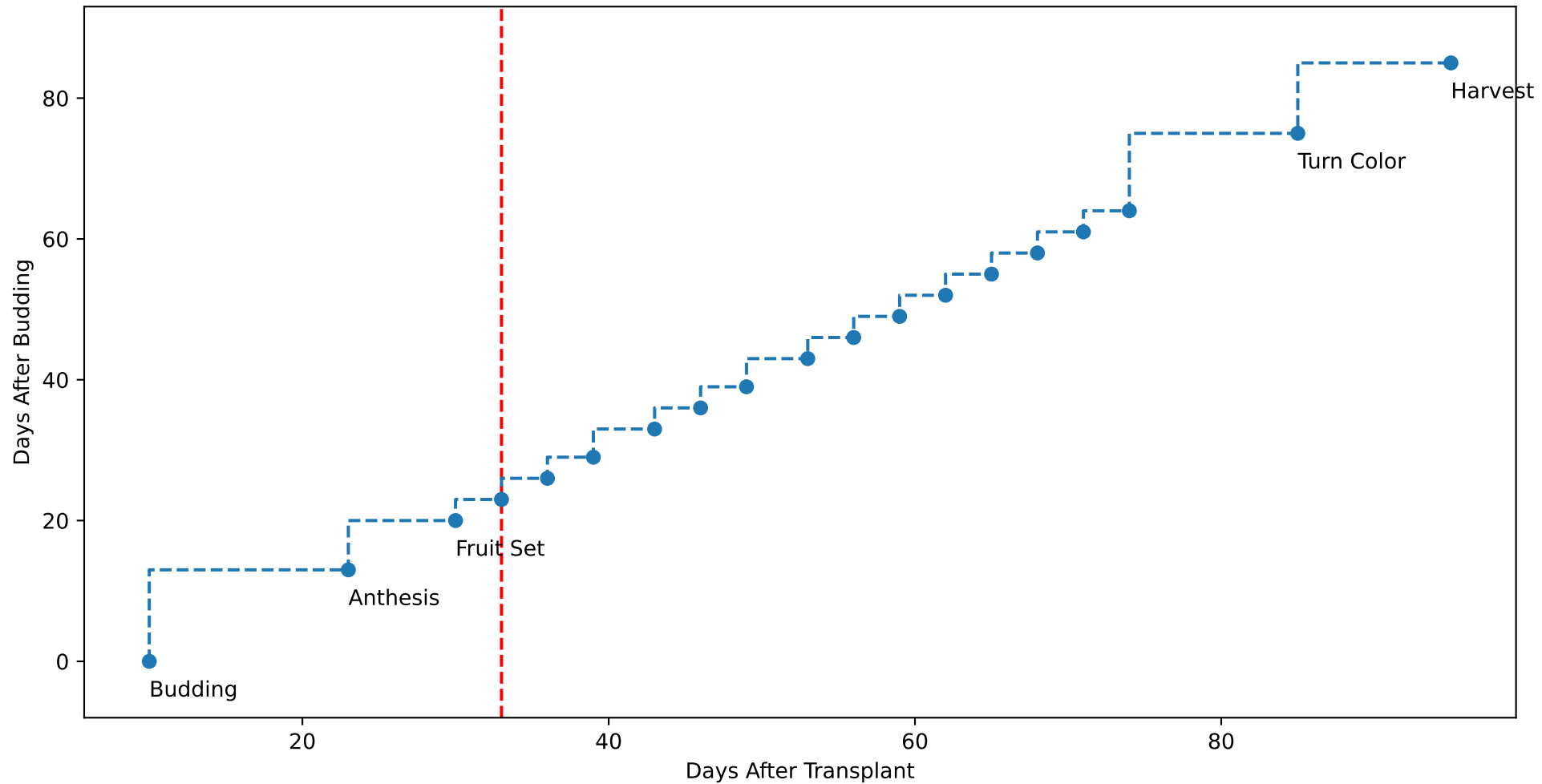
P8 TsN6 (plot by DAT)



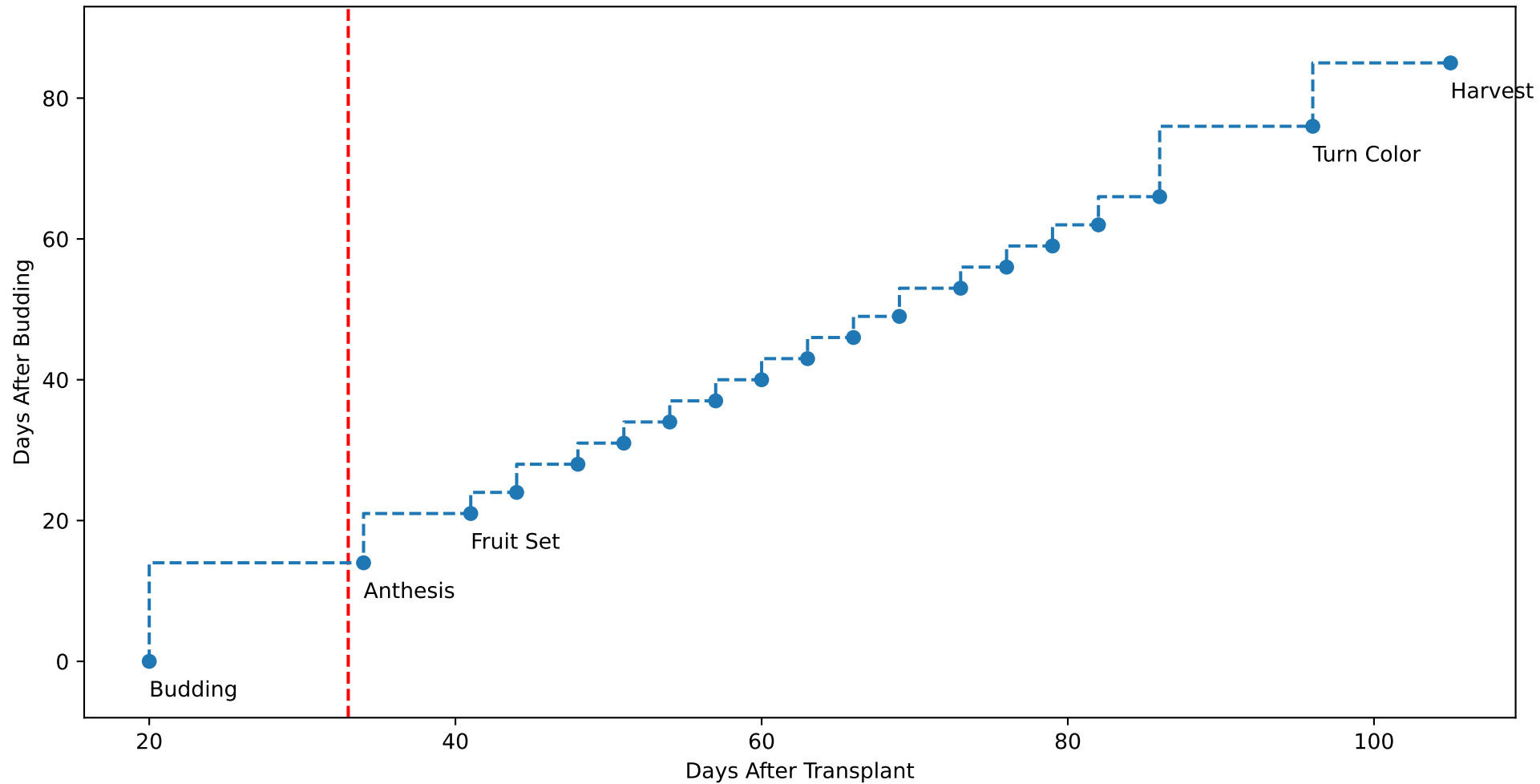
P8 (plot by adjDAT)



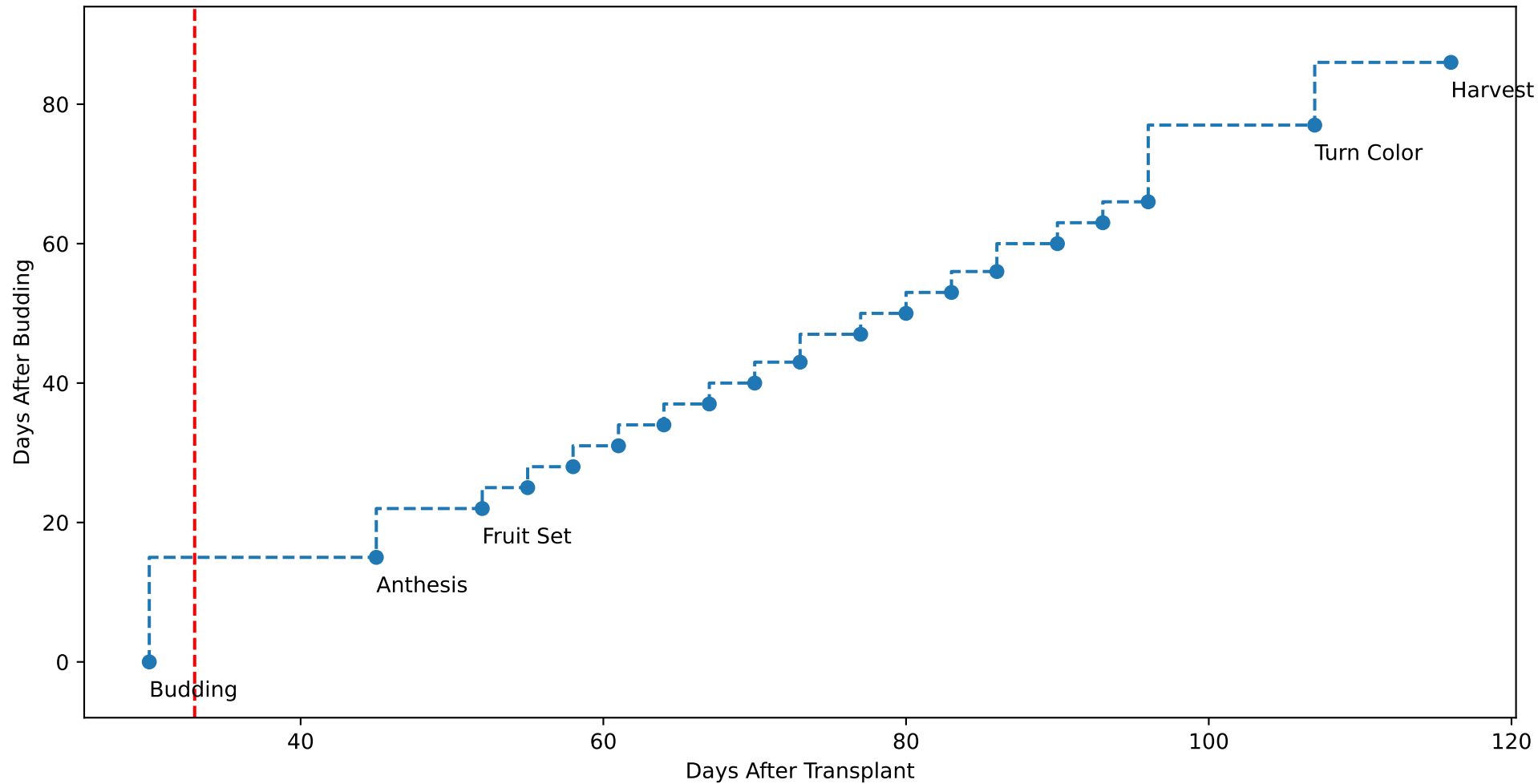
P8 TsN1 (plot by adjDAT)



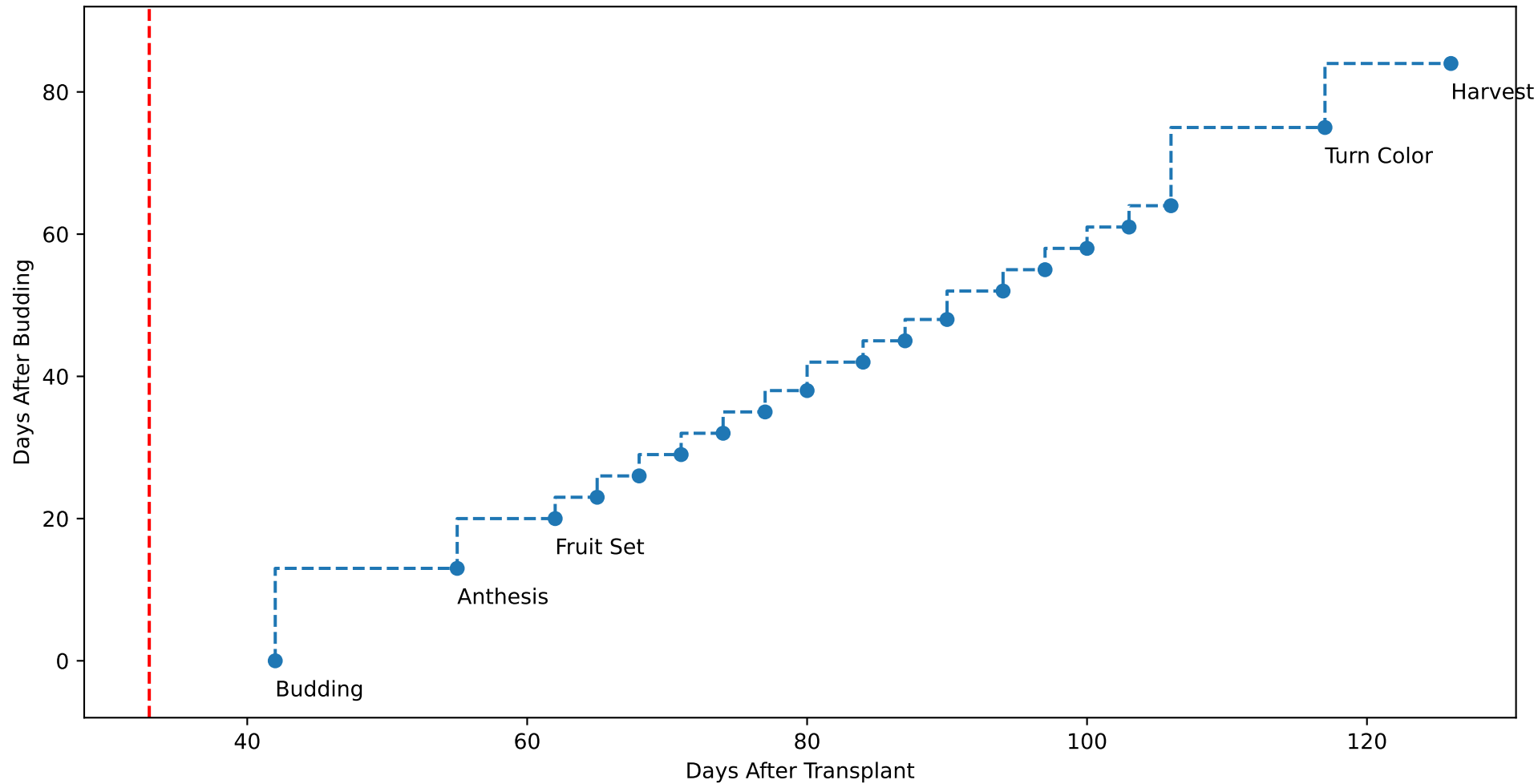
P8 TsN2 (plot by adjDAT)



P8 TsN3 (plot by adjDAT)

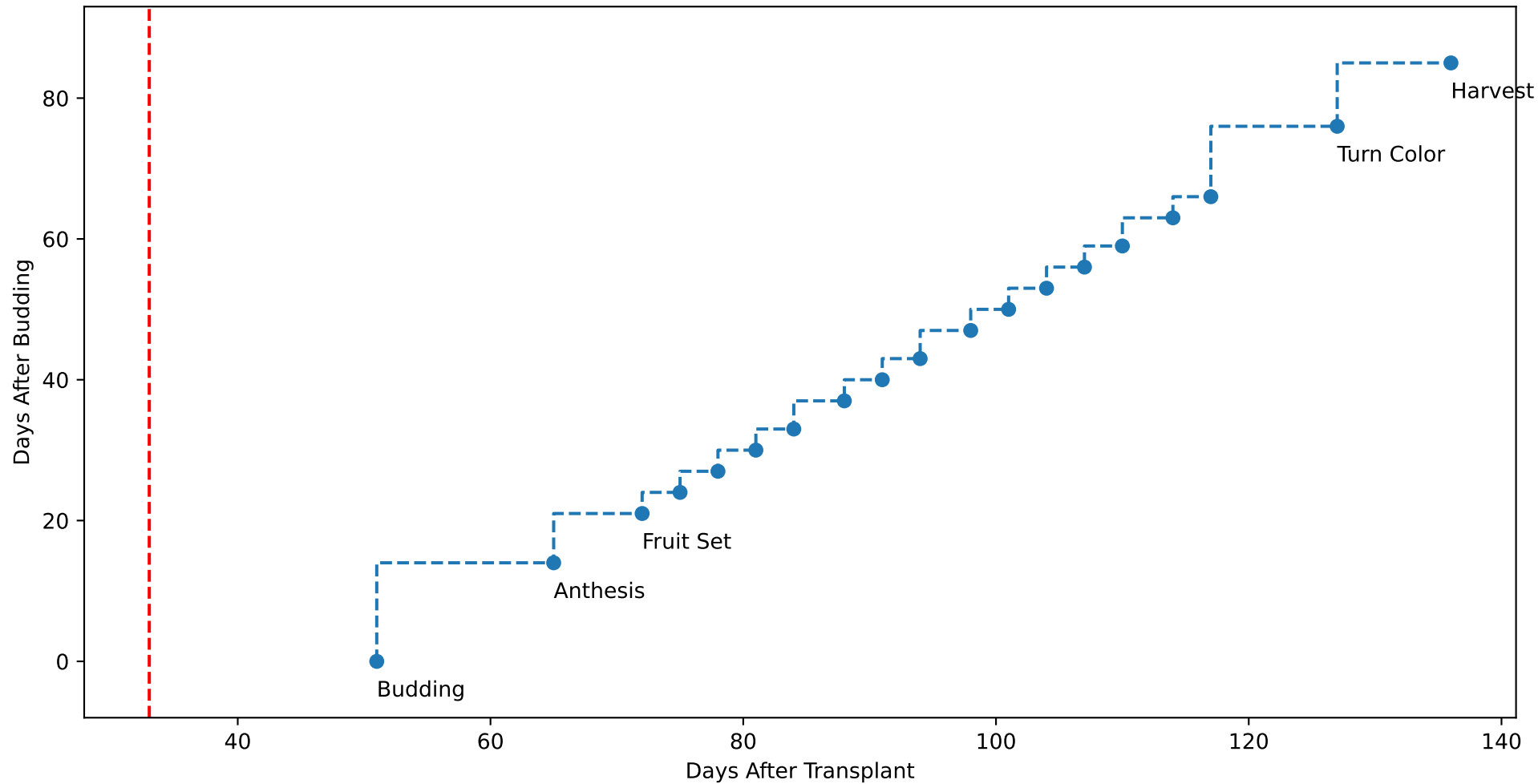


P8 TsN4 (plot by adjDAT)

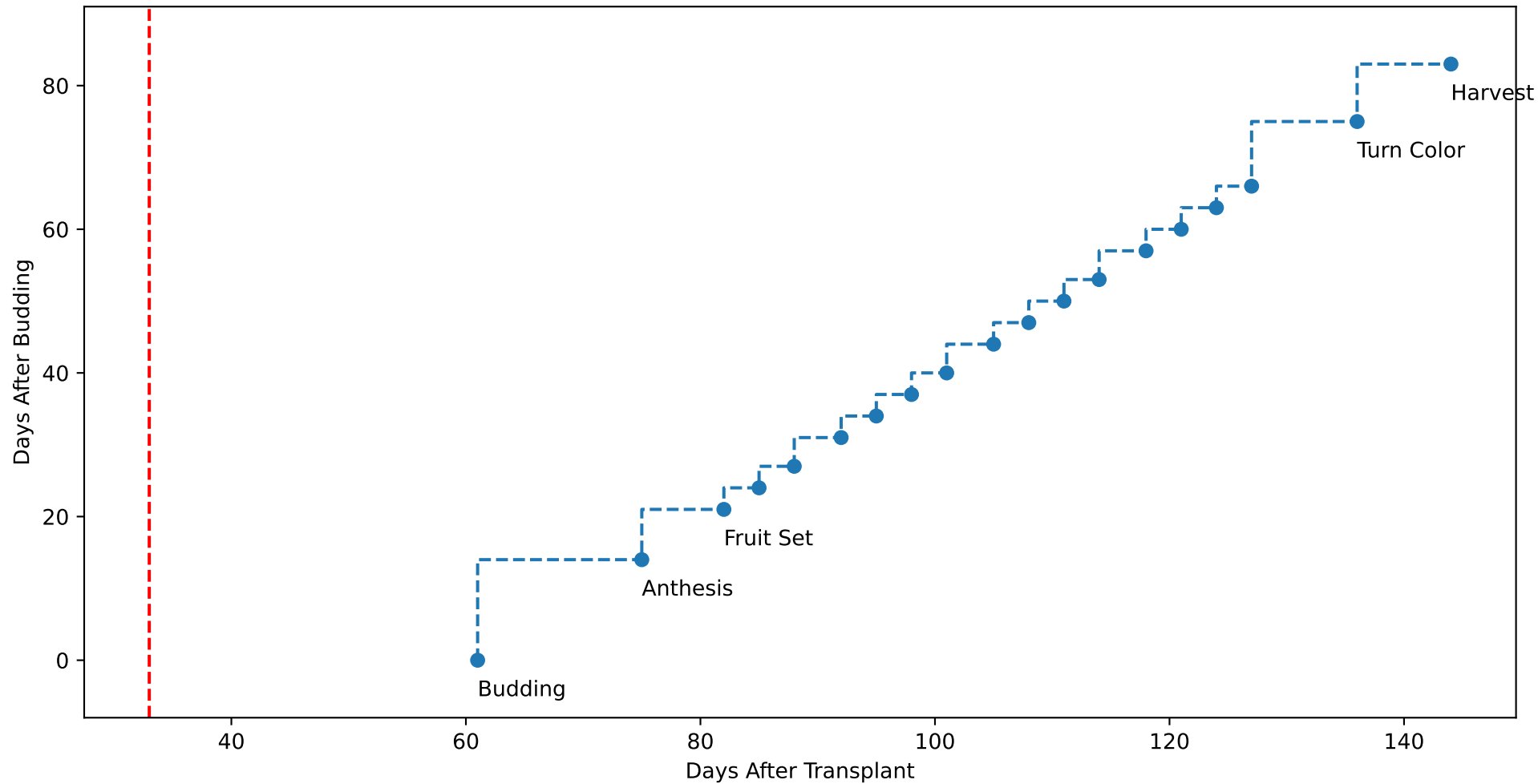




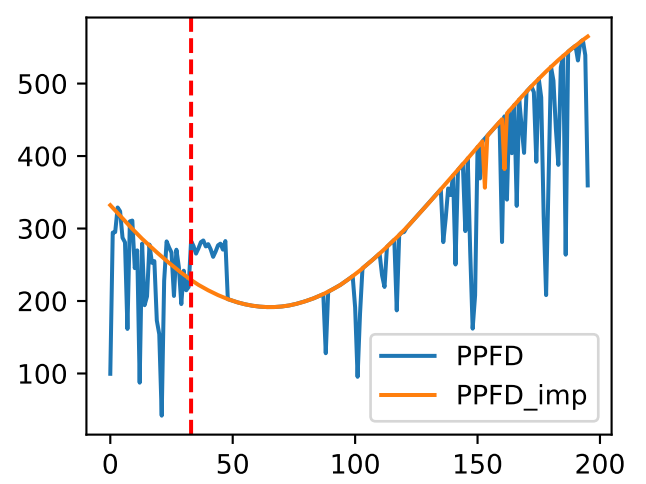
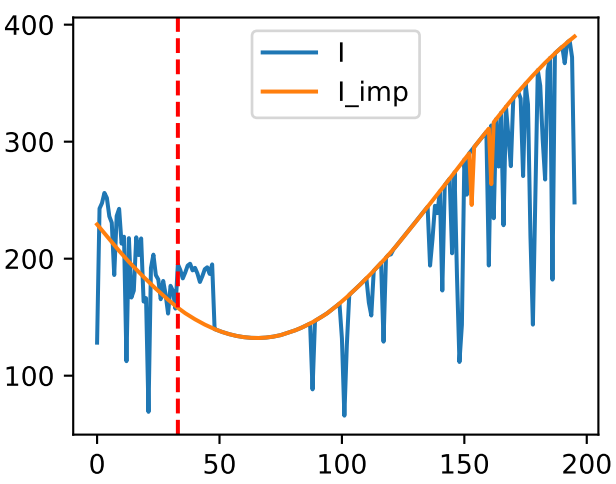
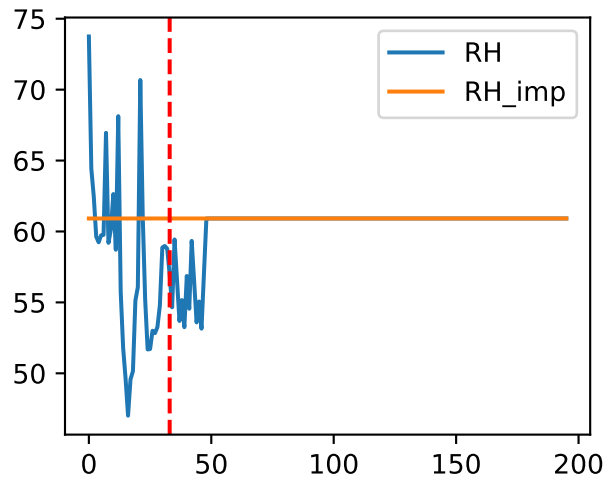
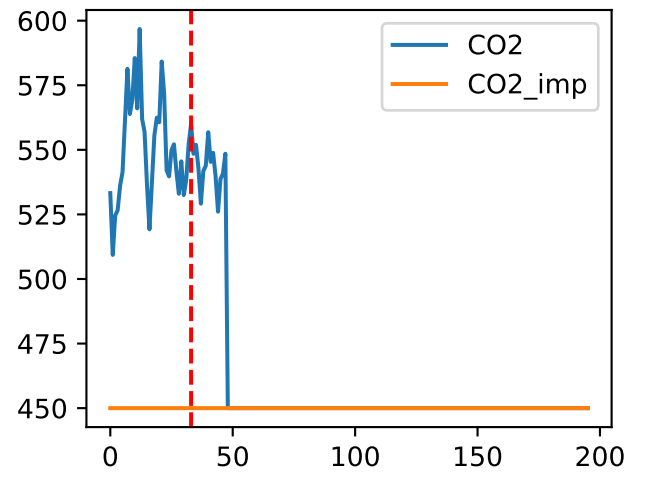
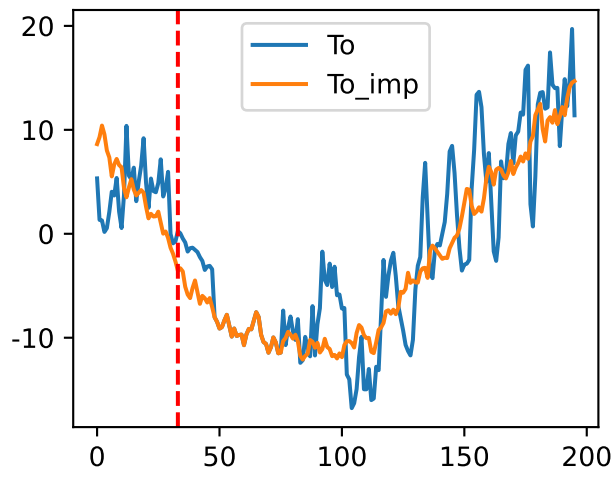
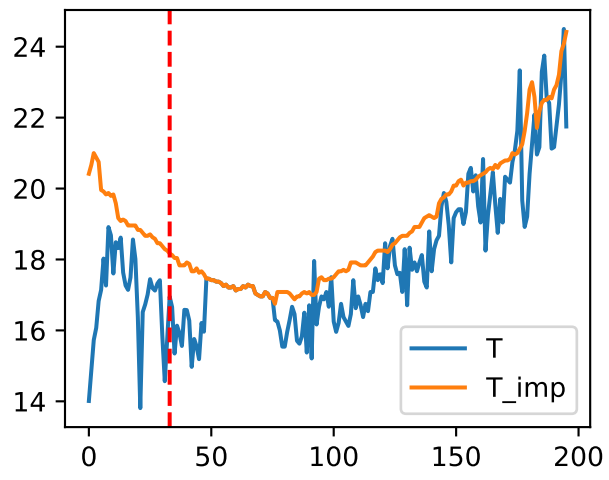
P8 TsN5 (plot by adjDAT)



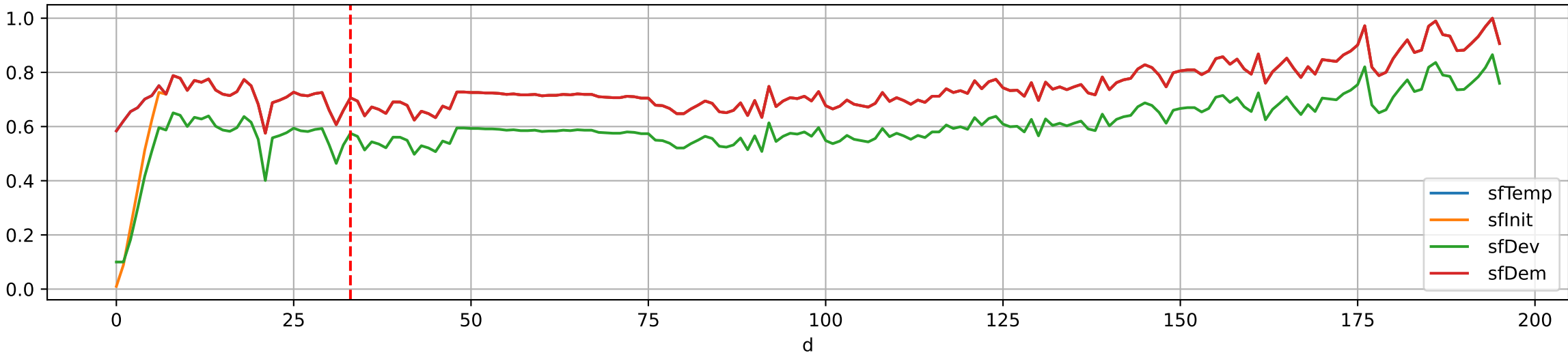
P8 TsN6 (plot by adjDAT)



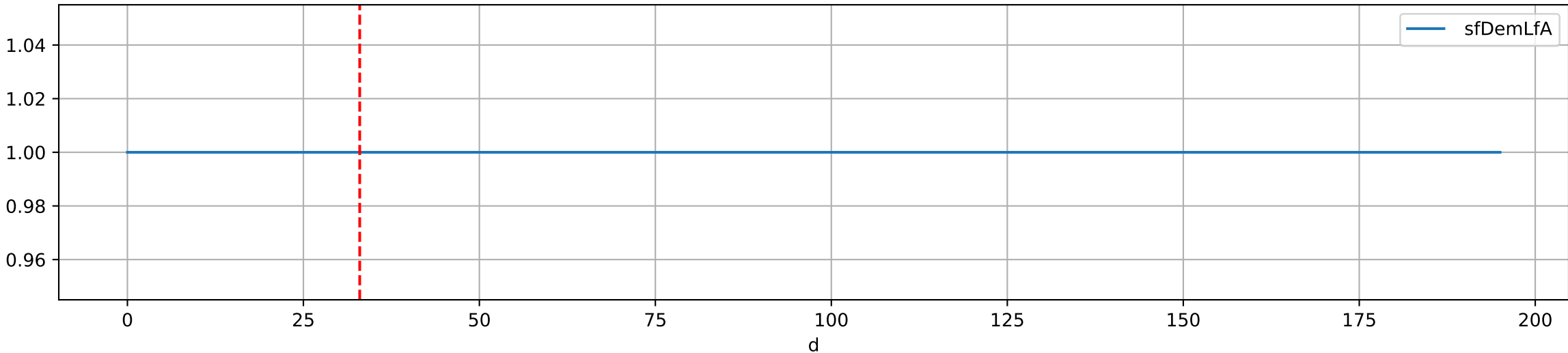
Plot Env Data



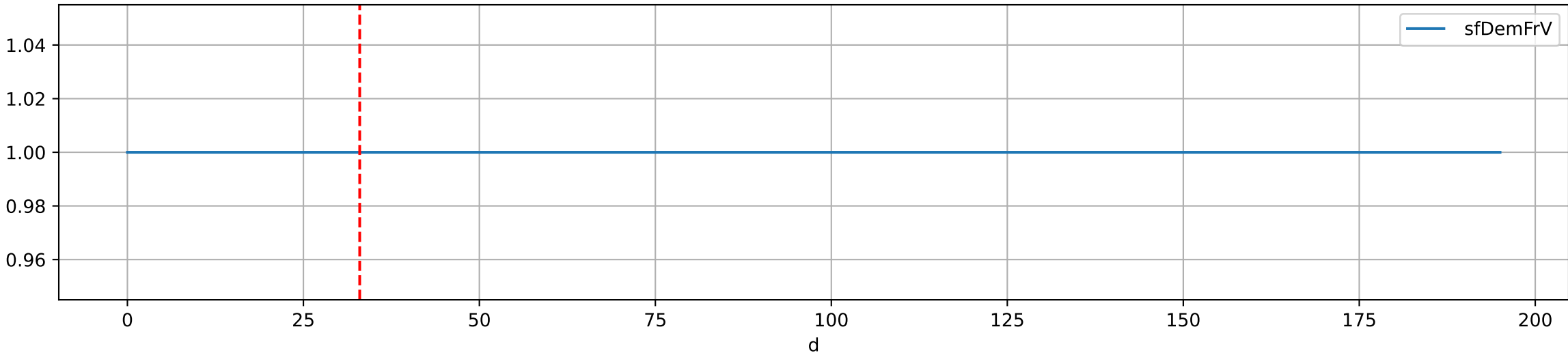
Plot [['sfTemp', 'sfInIt', 'sfDev', 'sfDem']]



Plot ['sfDemLfA']



Plot ['sfDemFrV']





Plot EnvOpt Decision

