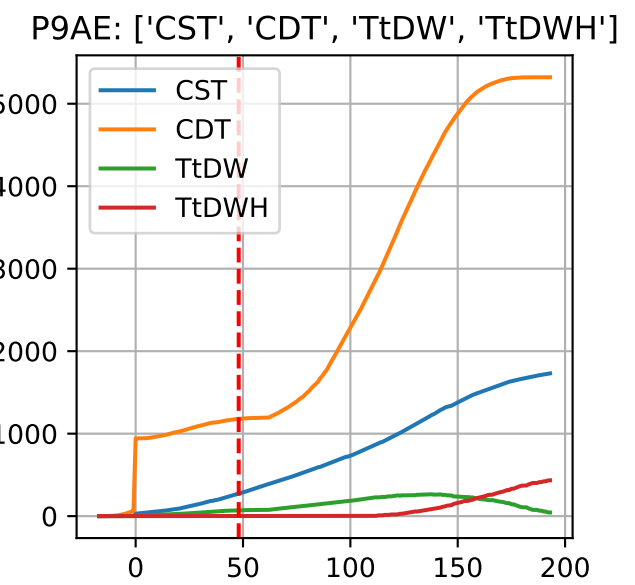
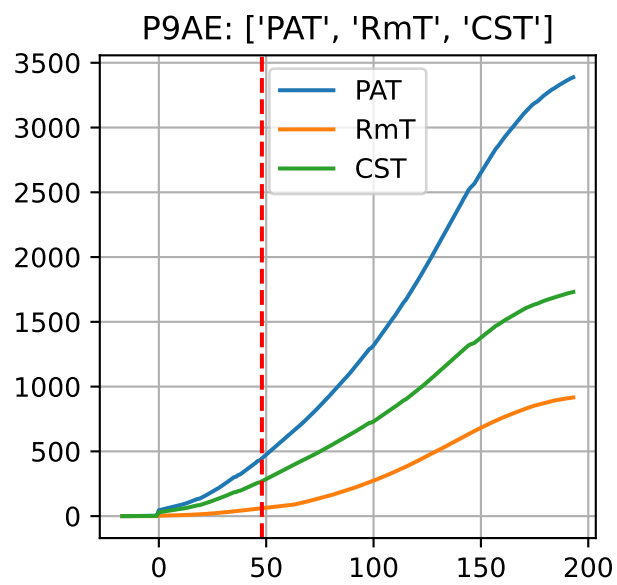
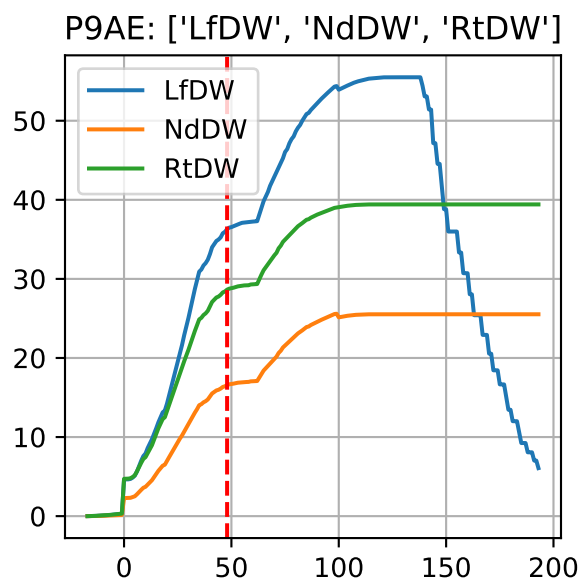
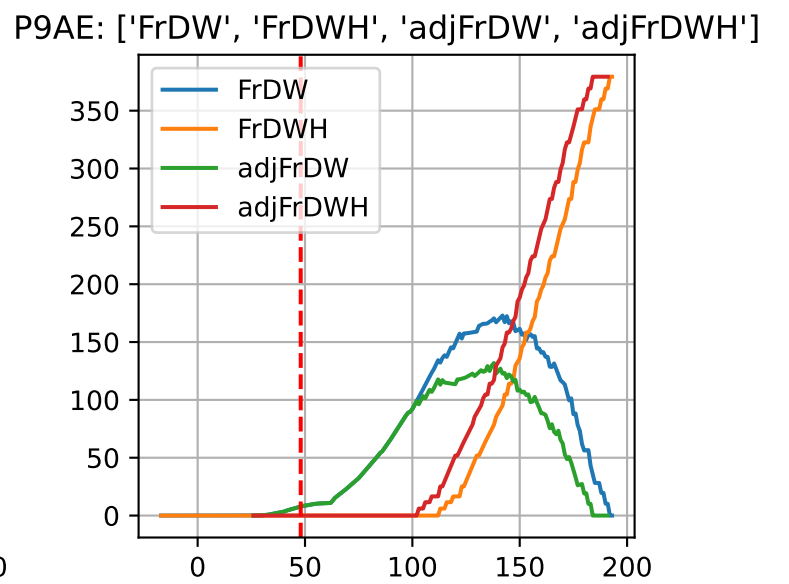
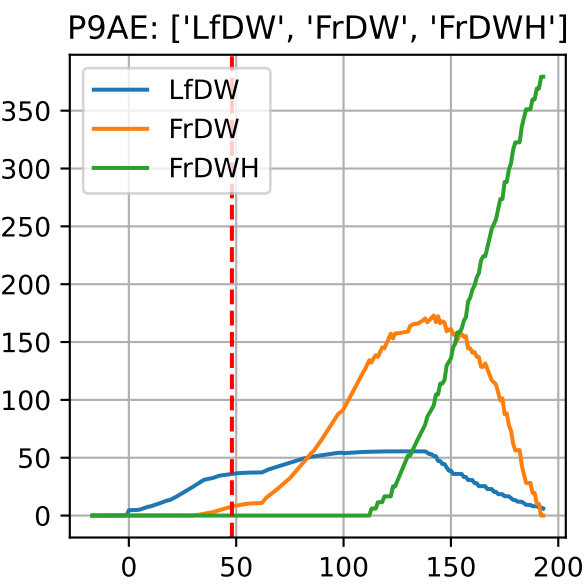
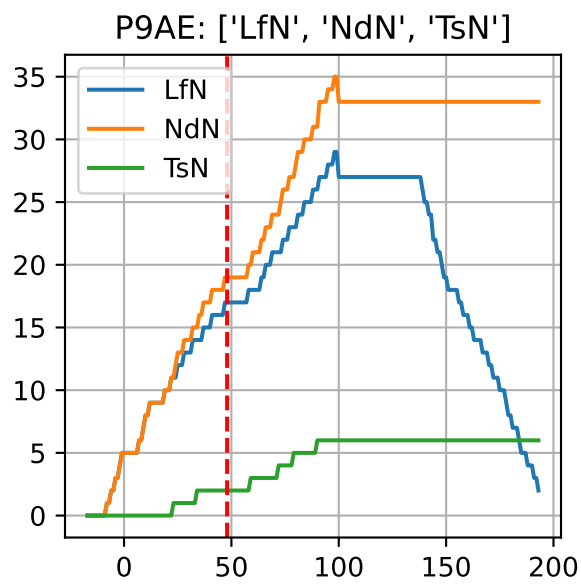
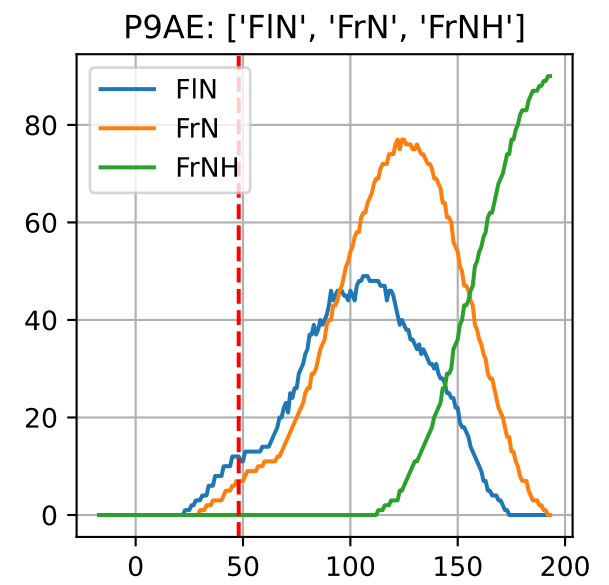
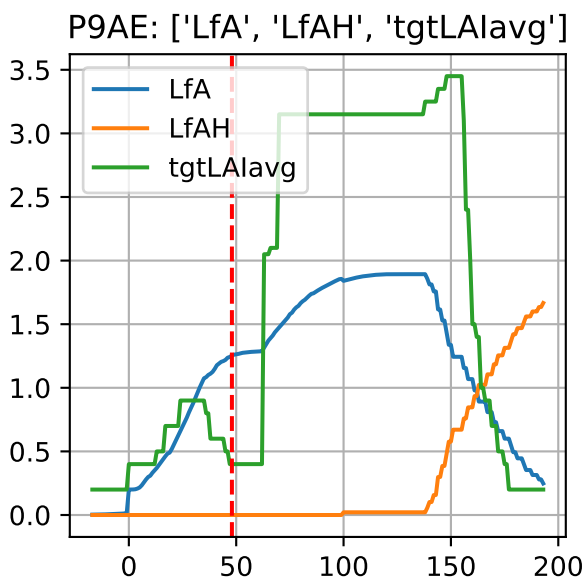
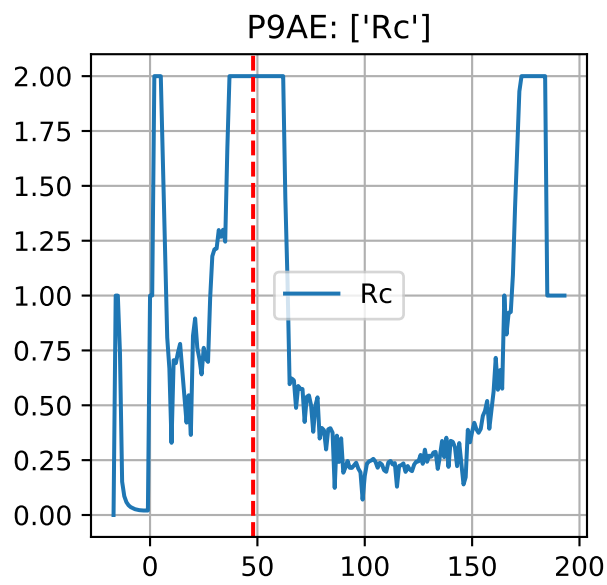
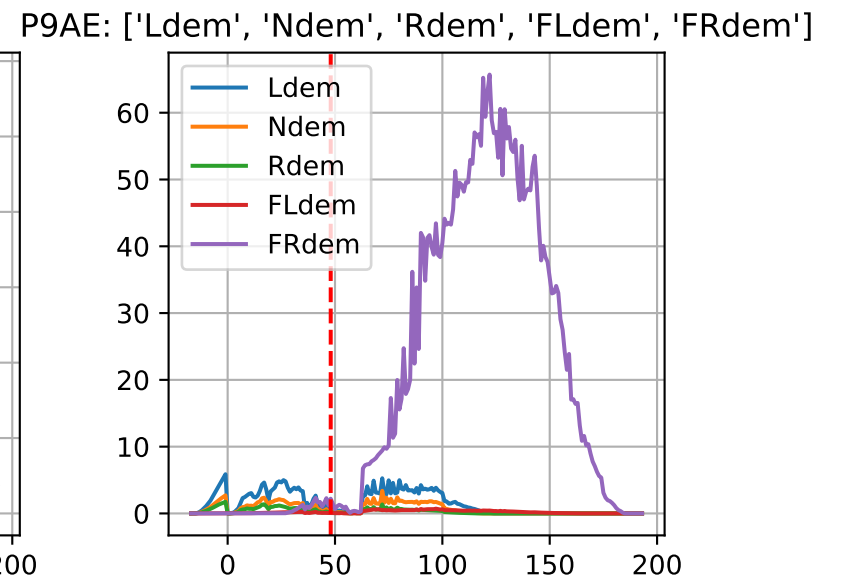
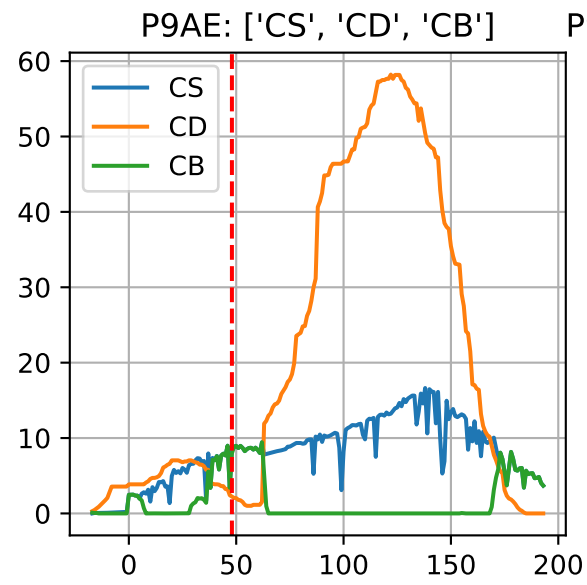
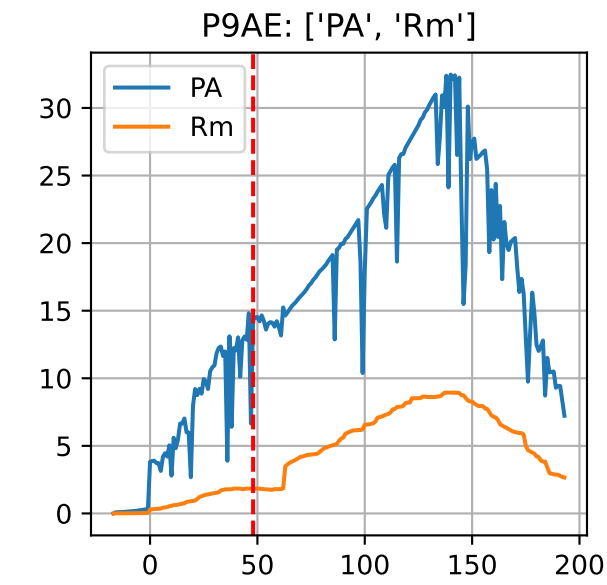
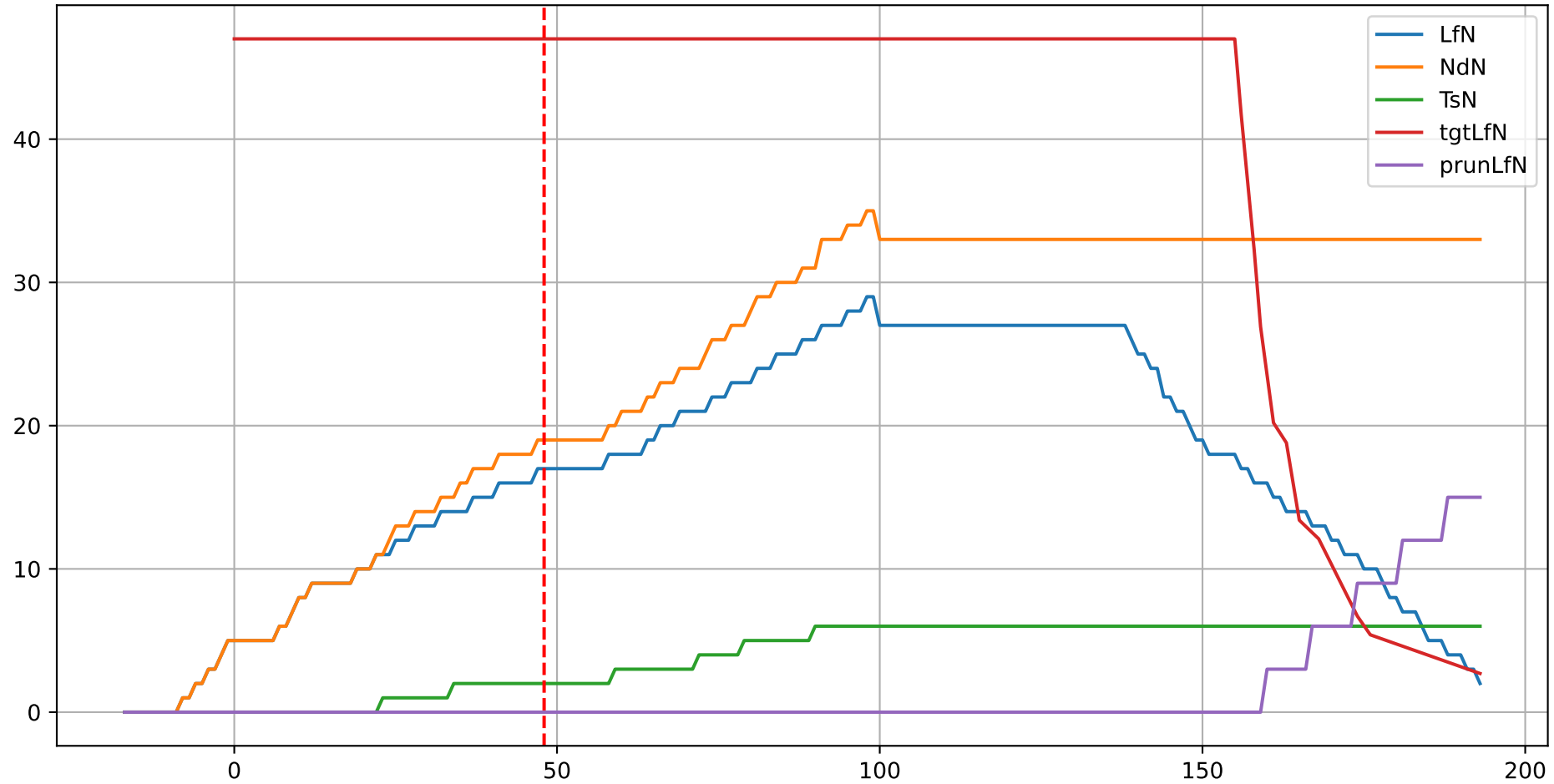


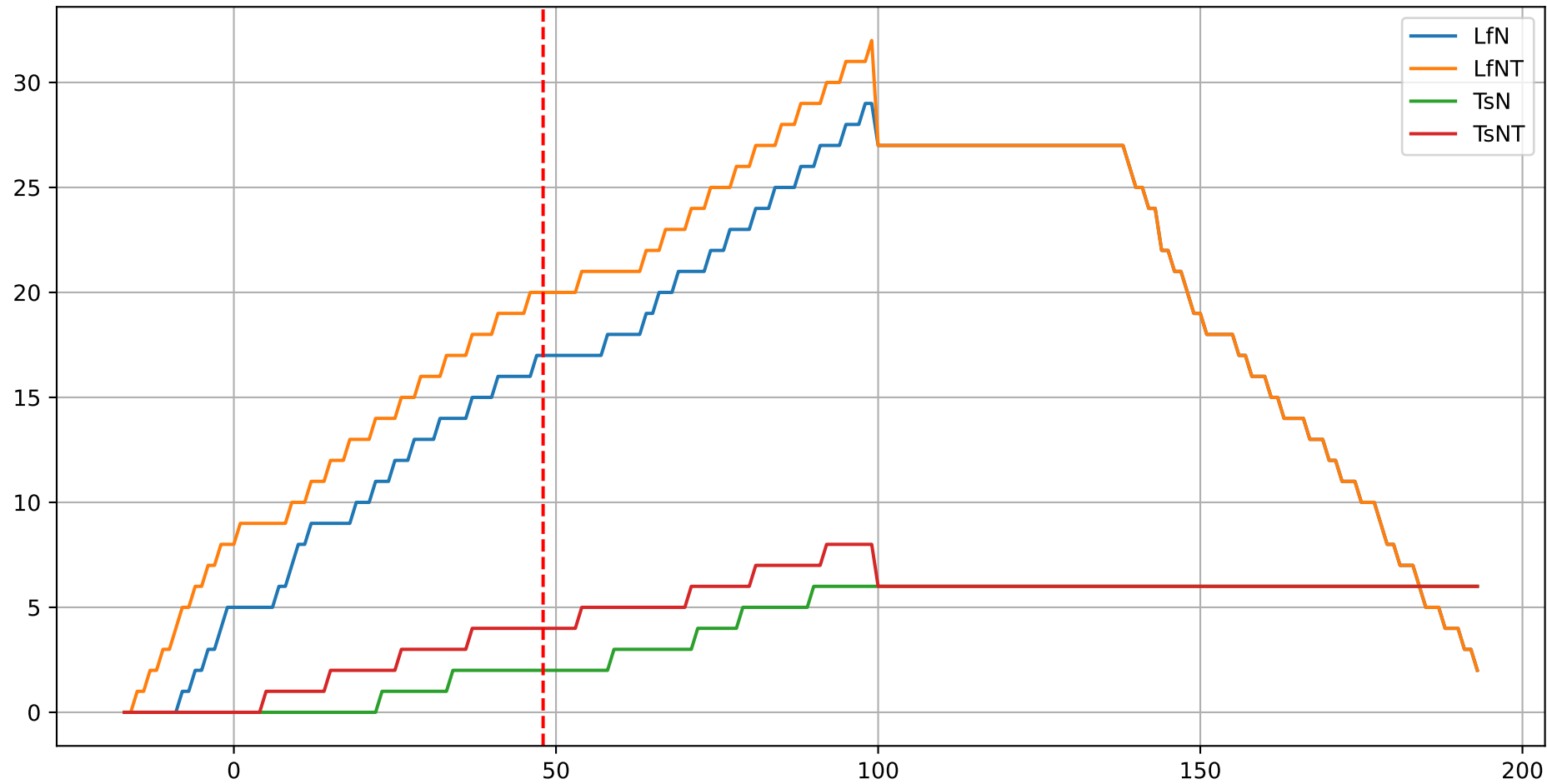
Model Prediction (P9AE)



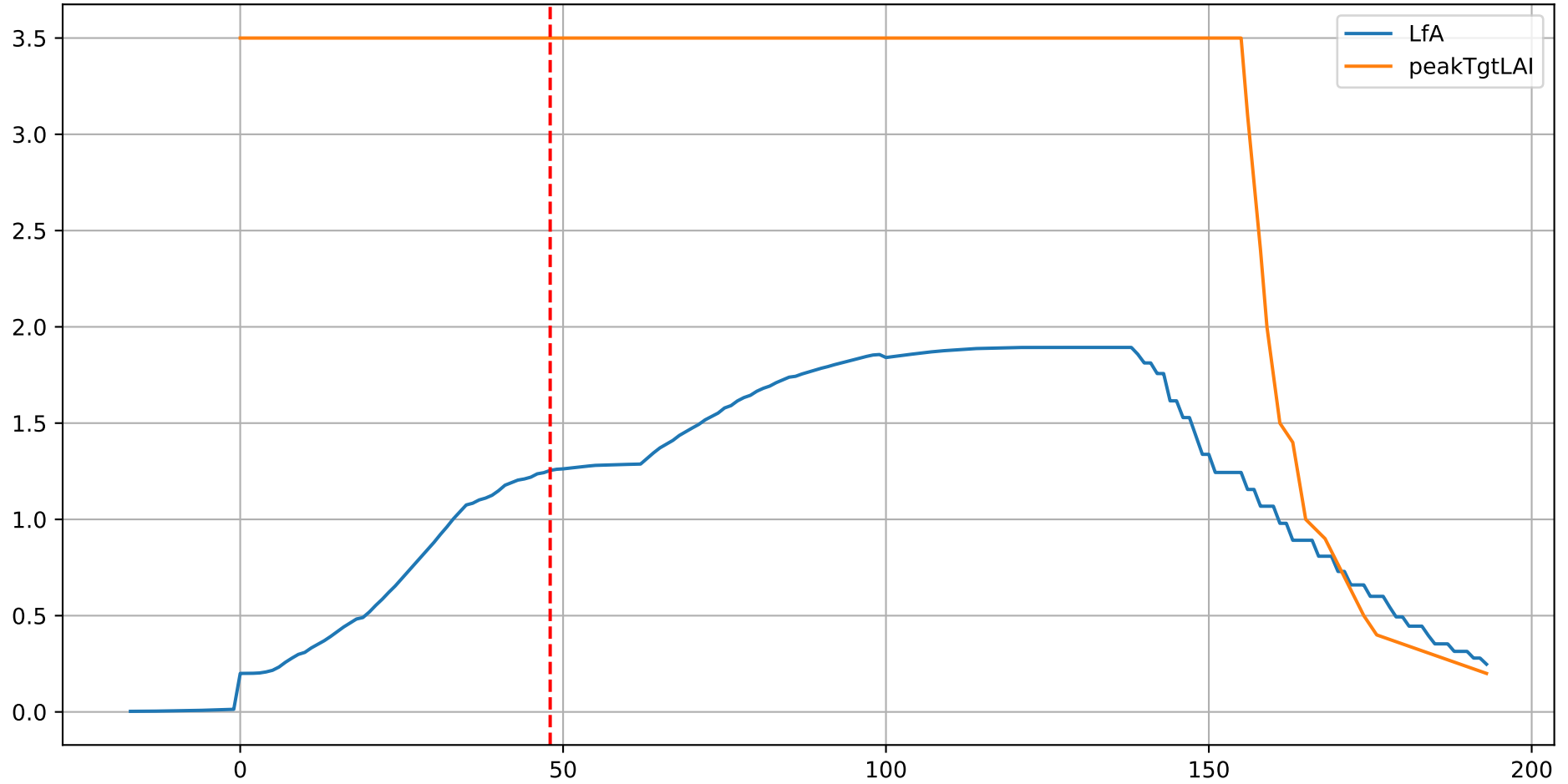
P9AE: ['LfN', 'NdN', 'TsN', 'tgtLfN', 'prunLfN']



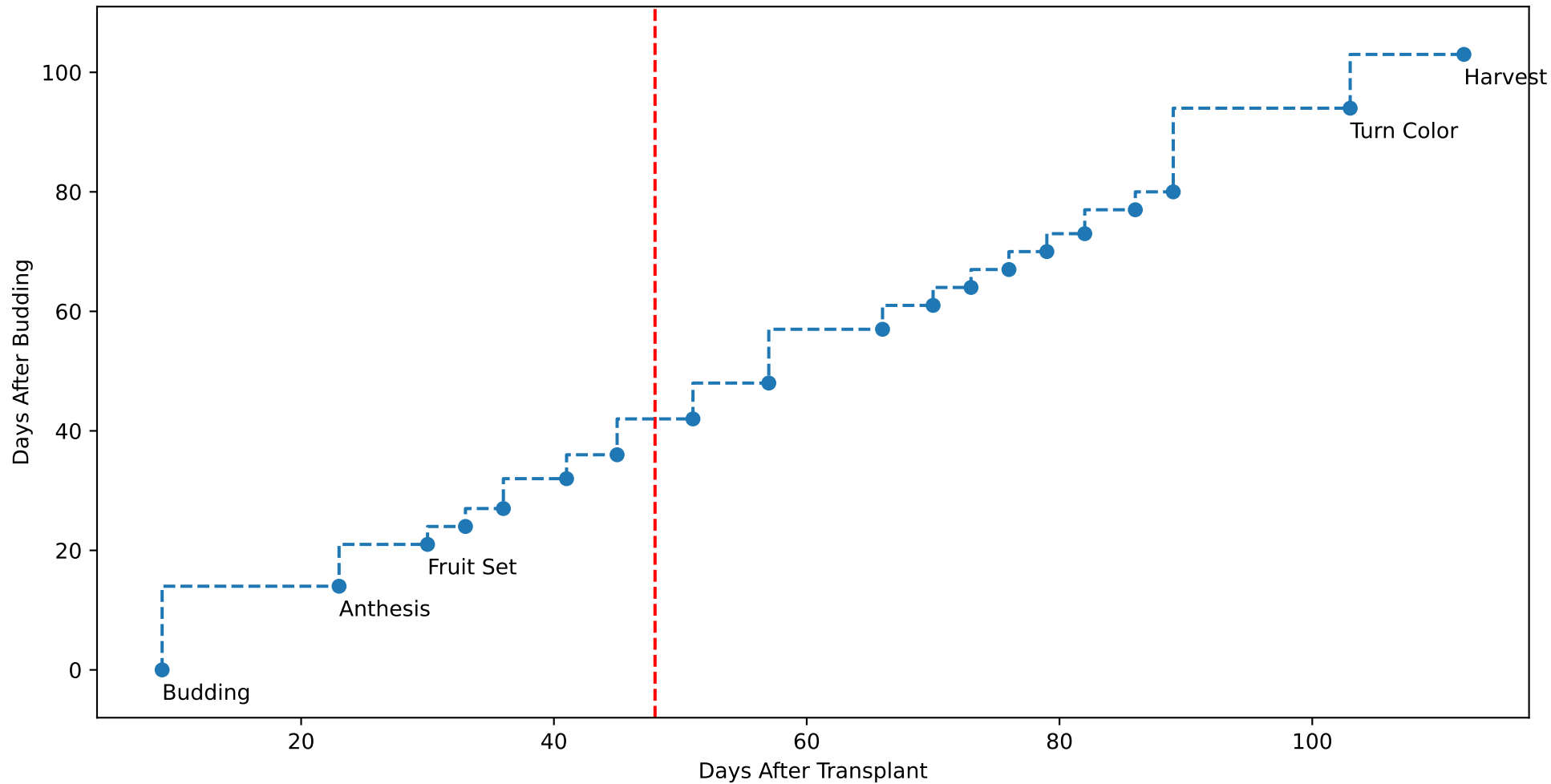
P9AE: ['LfN', 'LfNT', 'TsN', 'TsNT']



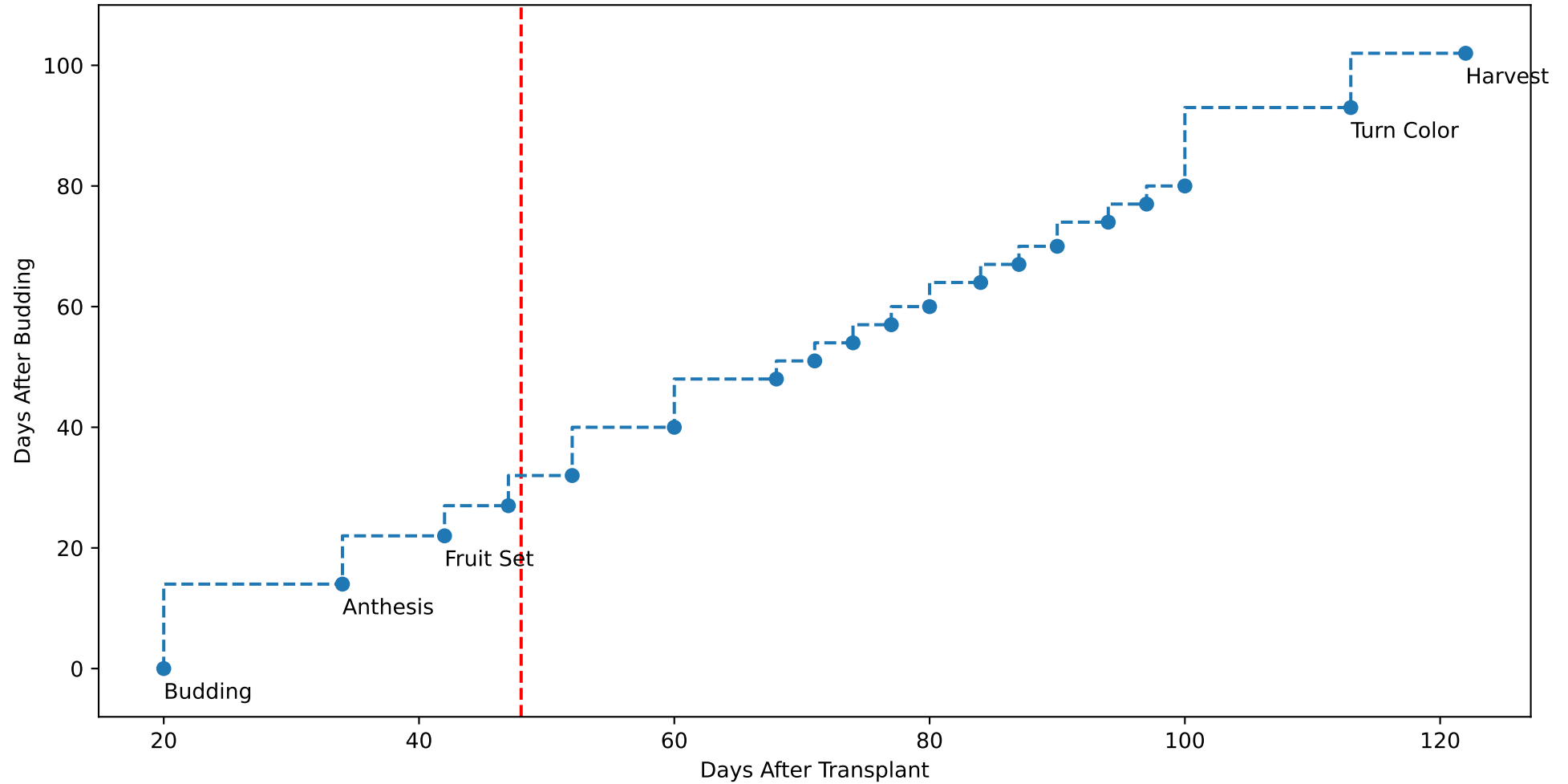
P9AE: ['LfA', 'peakTgtLAI']



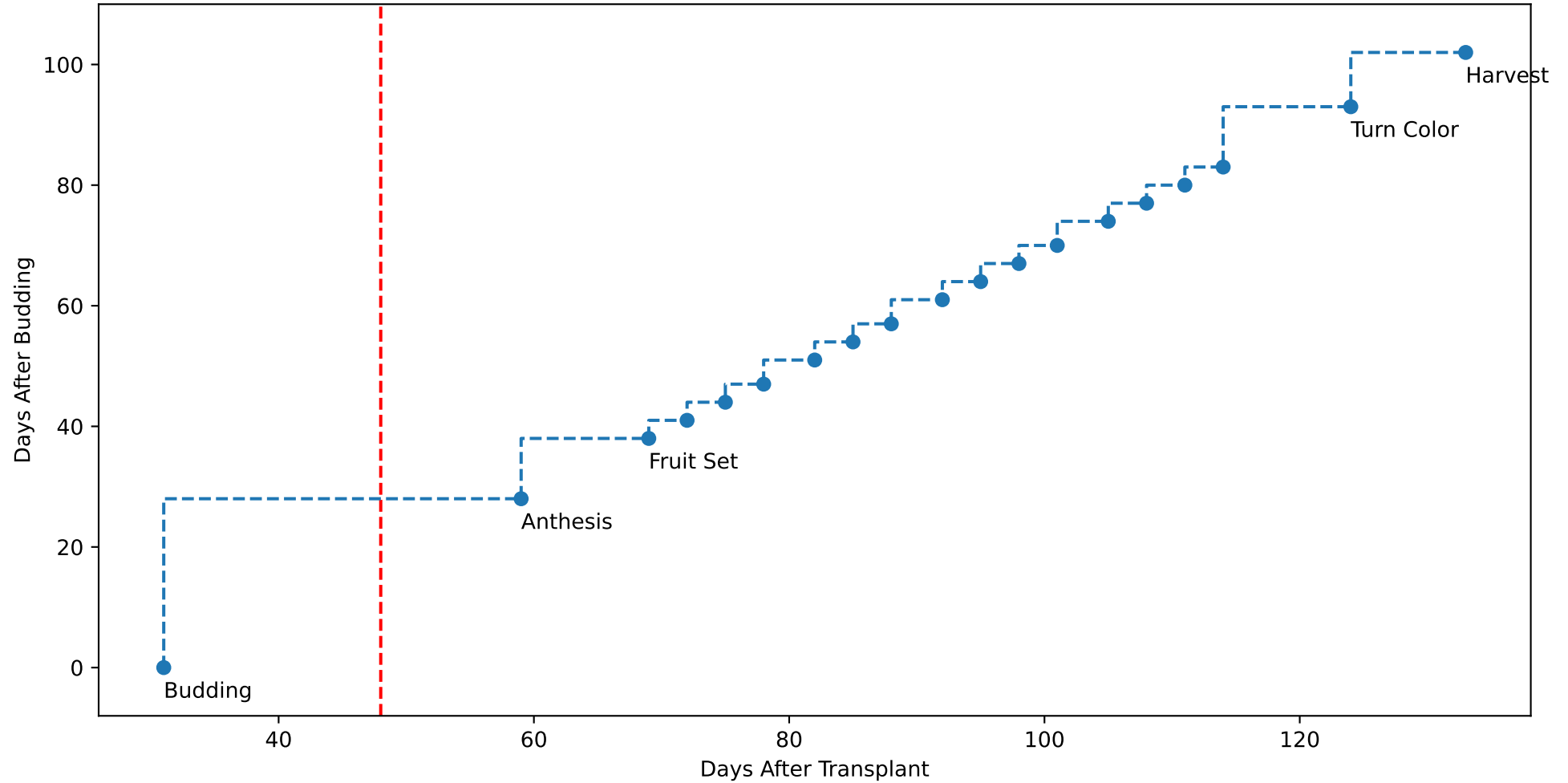
P9AE TsN1 (plot by DAT)



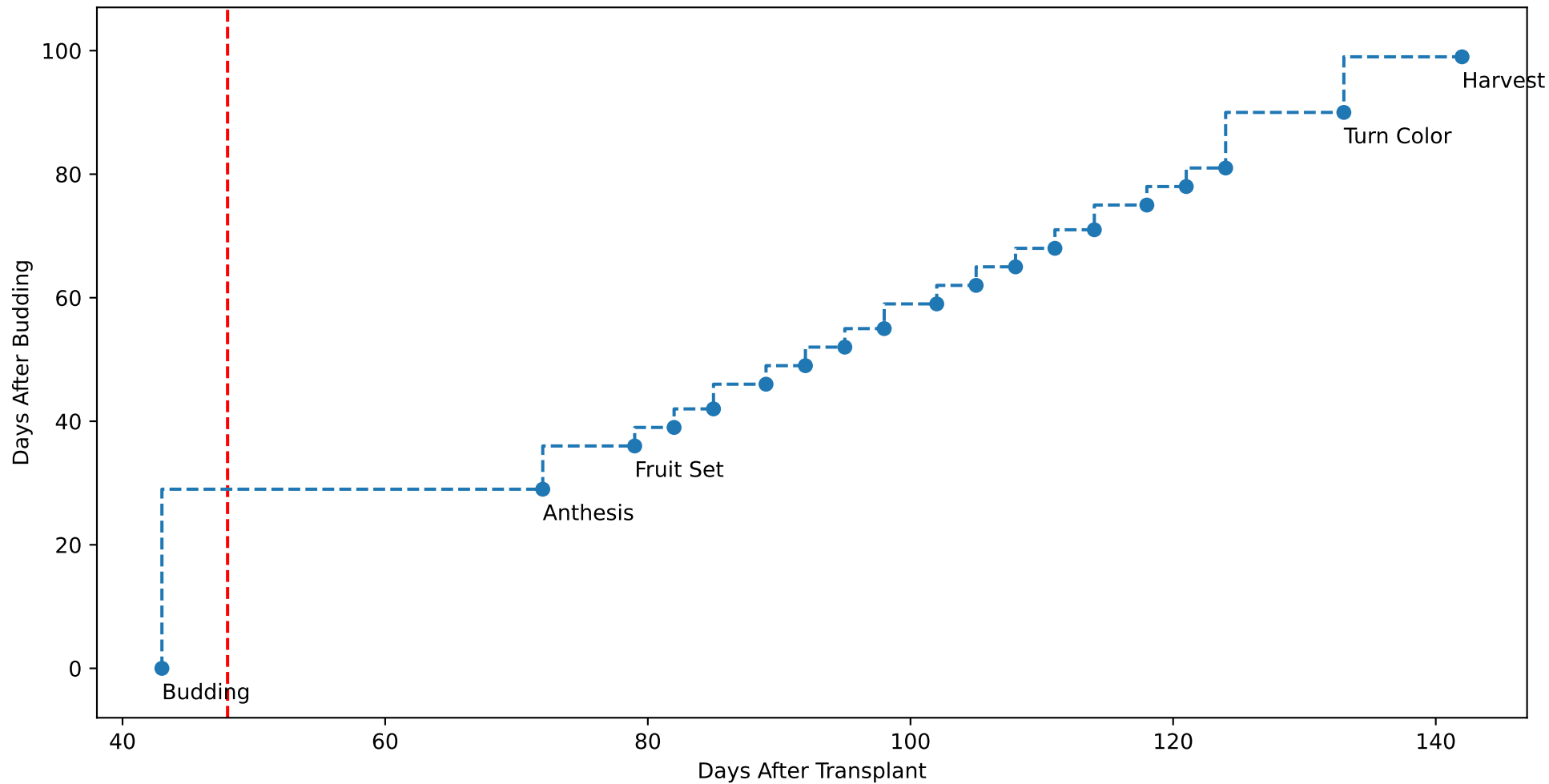
P9AE TsN2 (plot by DAT)



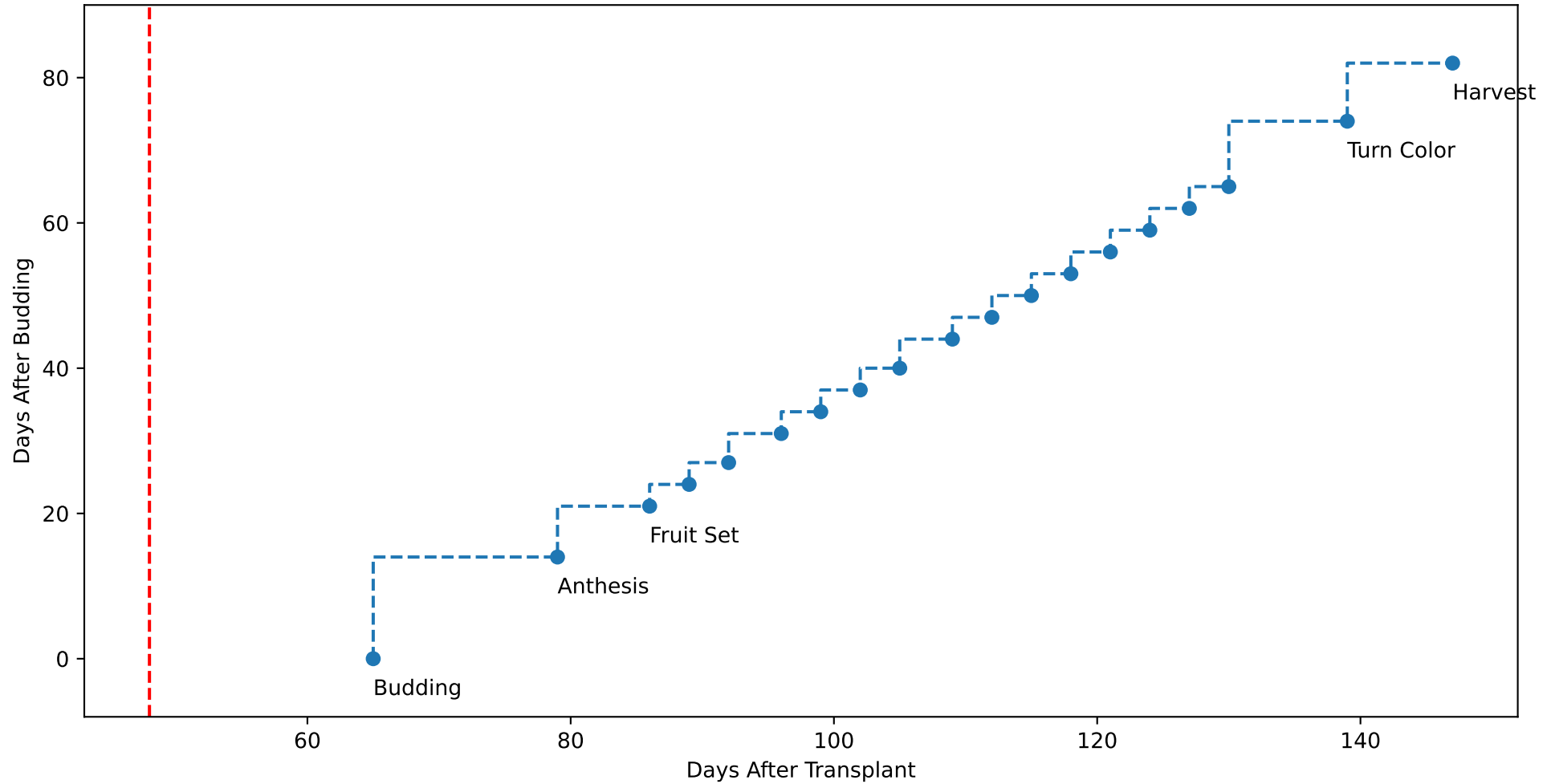
P9AE TsN3 (plot by DAT)



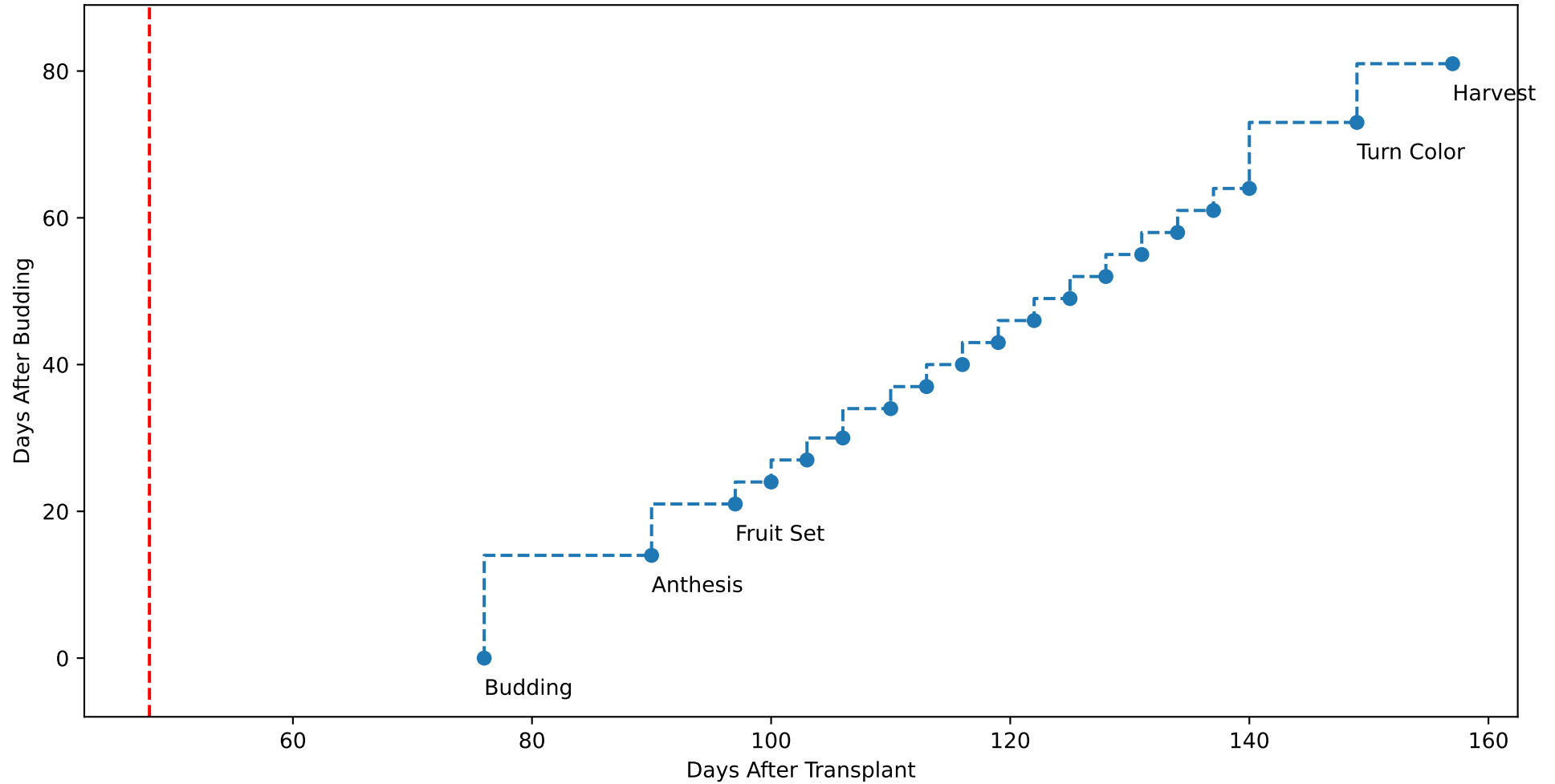
P9AE TsN4 (plot by DAT)



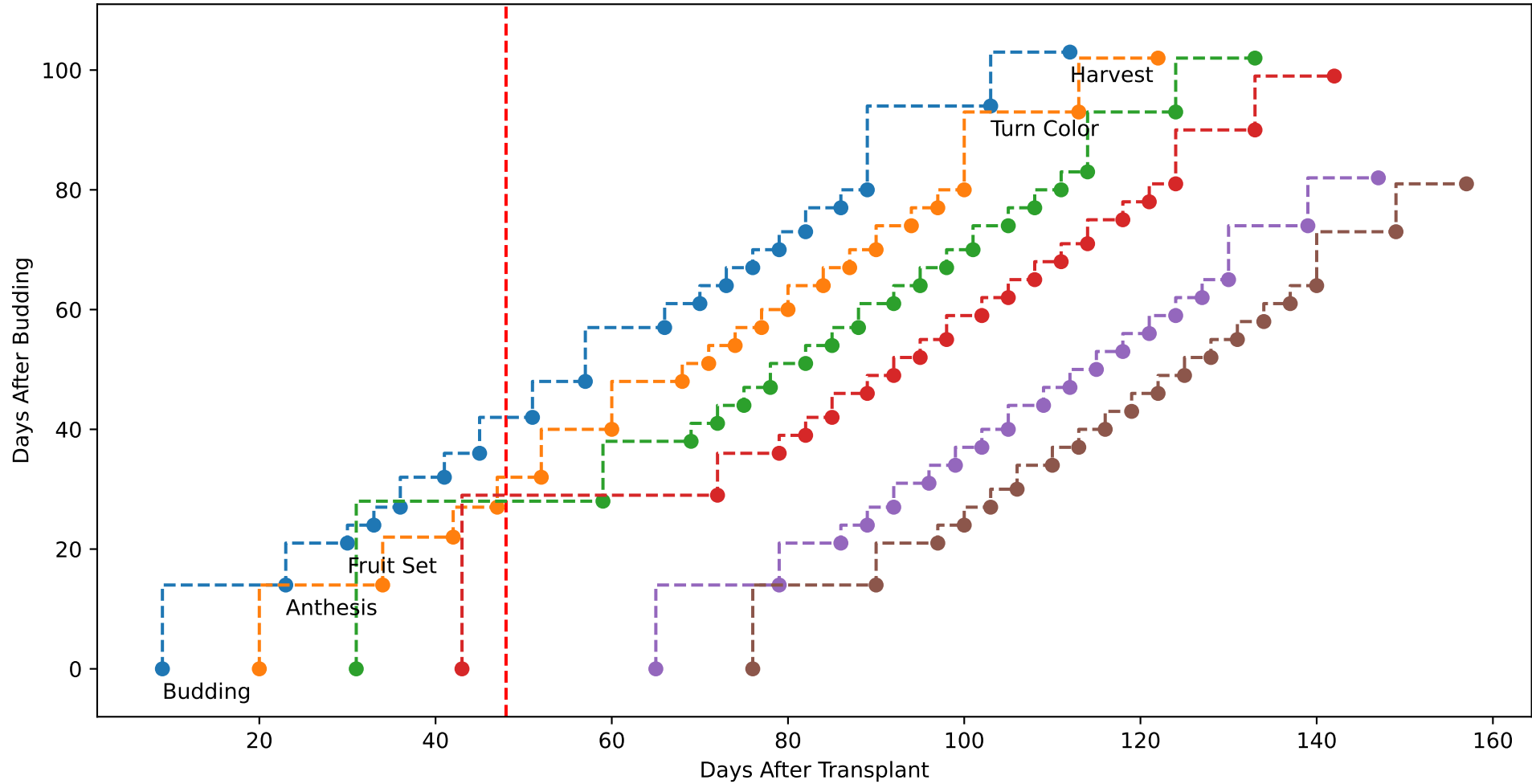
P9AE TsN5 (plot by DAT)



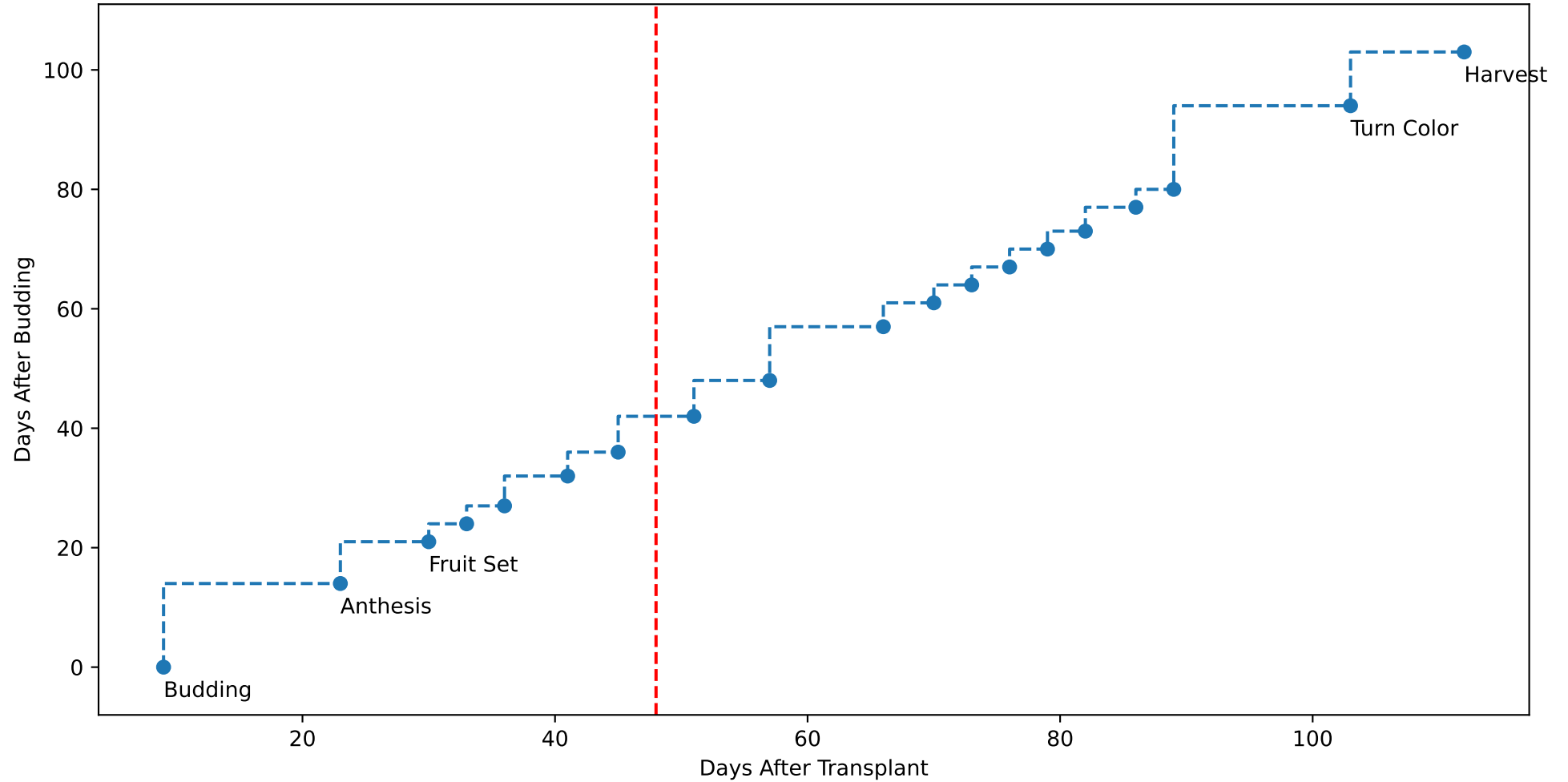
P9AE TsN6 (plot by DAT)



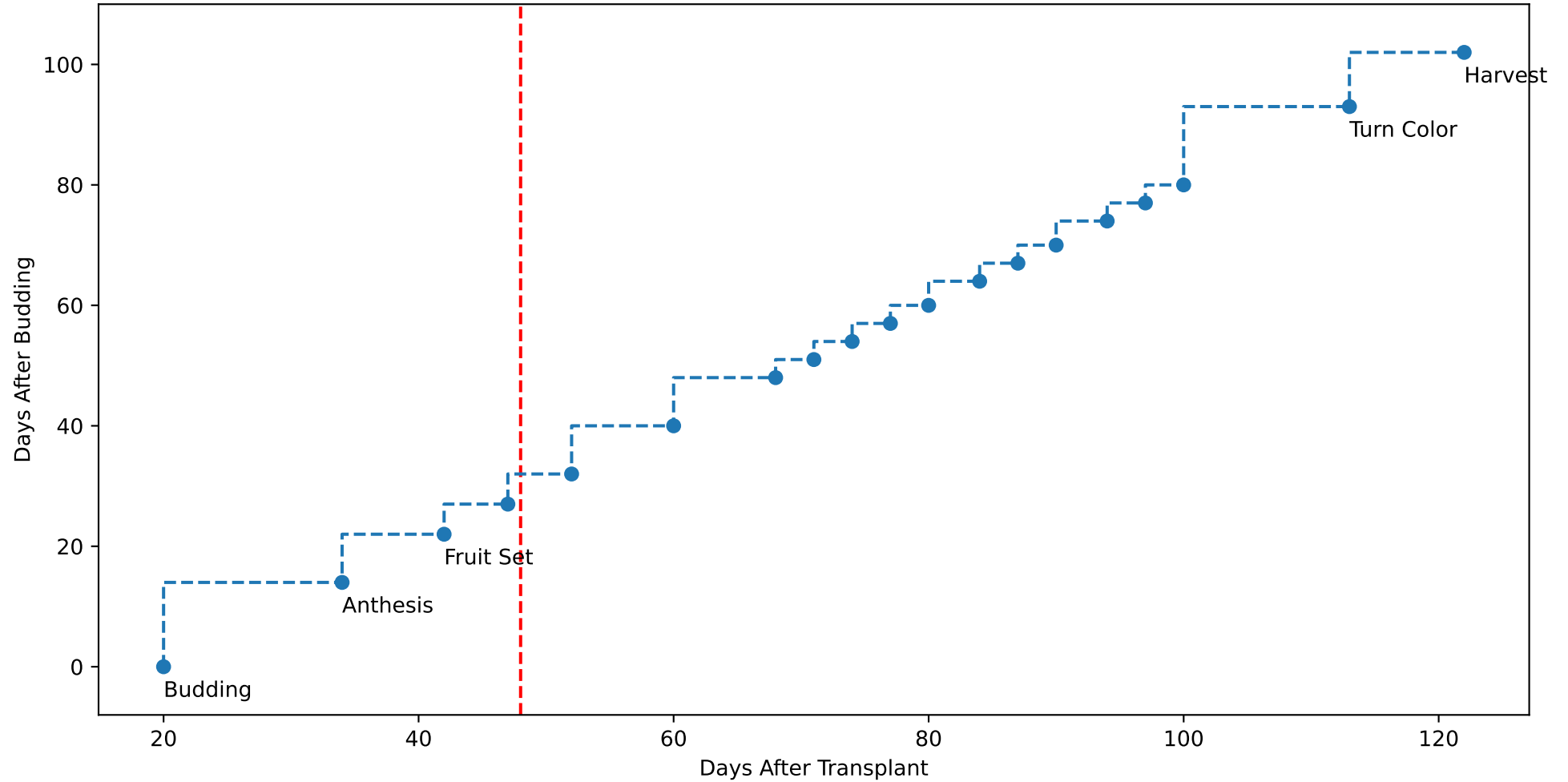
P9AE (plot by adjDAT)



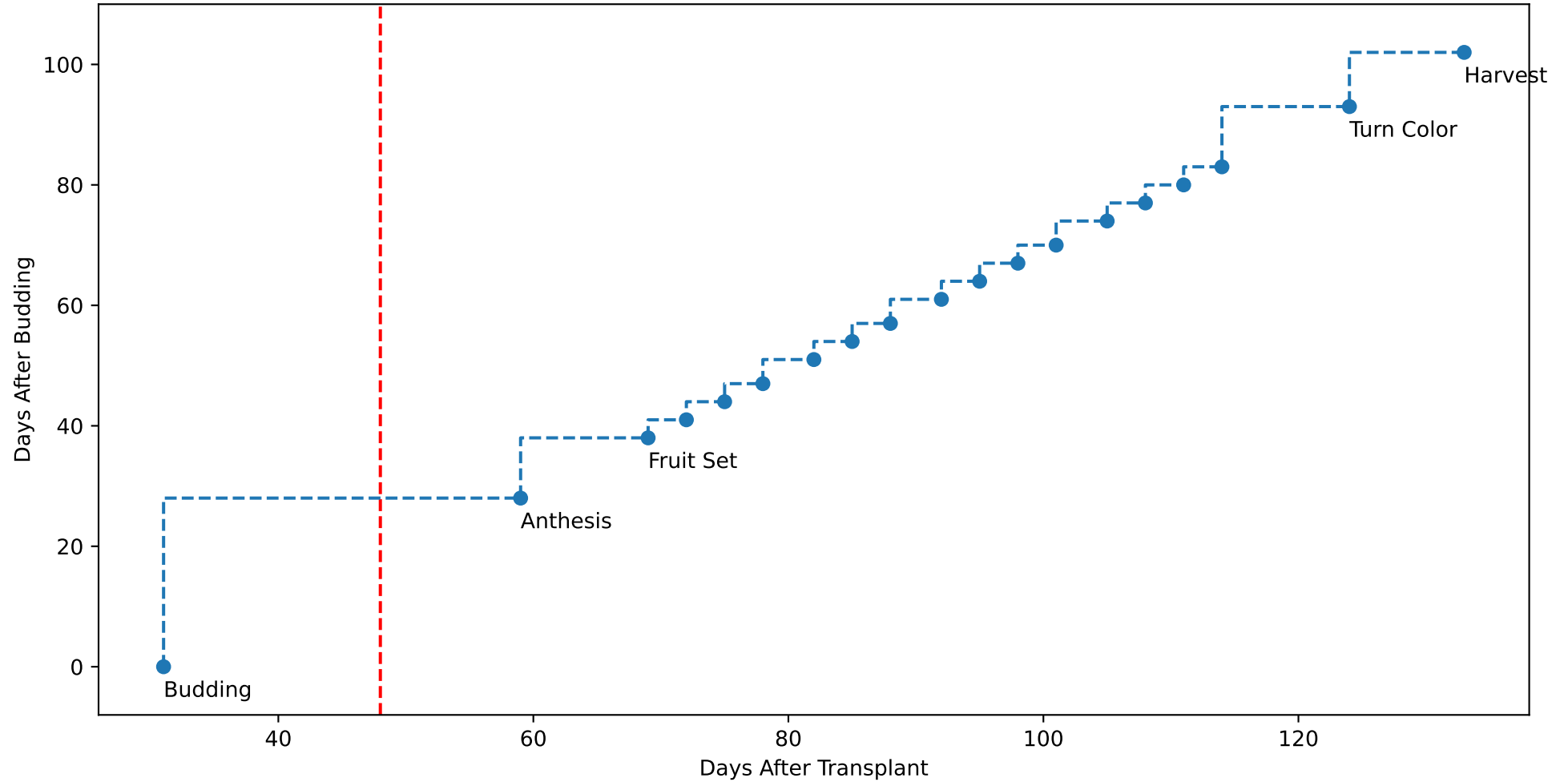
P9AE TsN1 (plot by adjDAT)



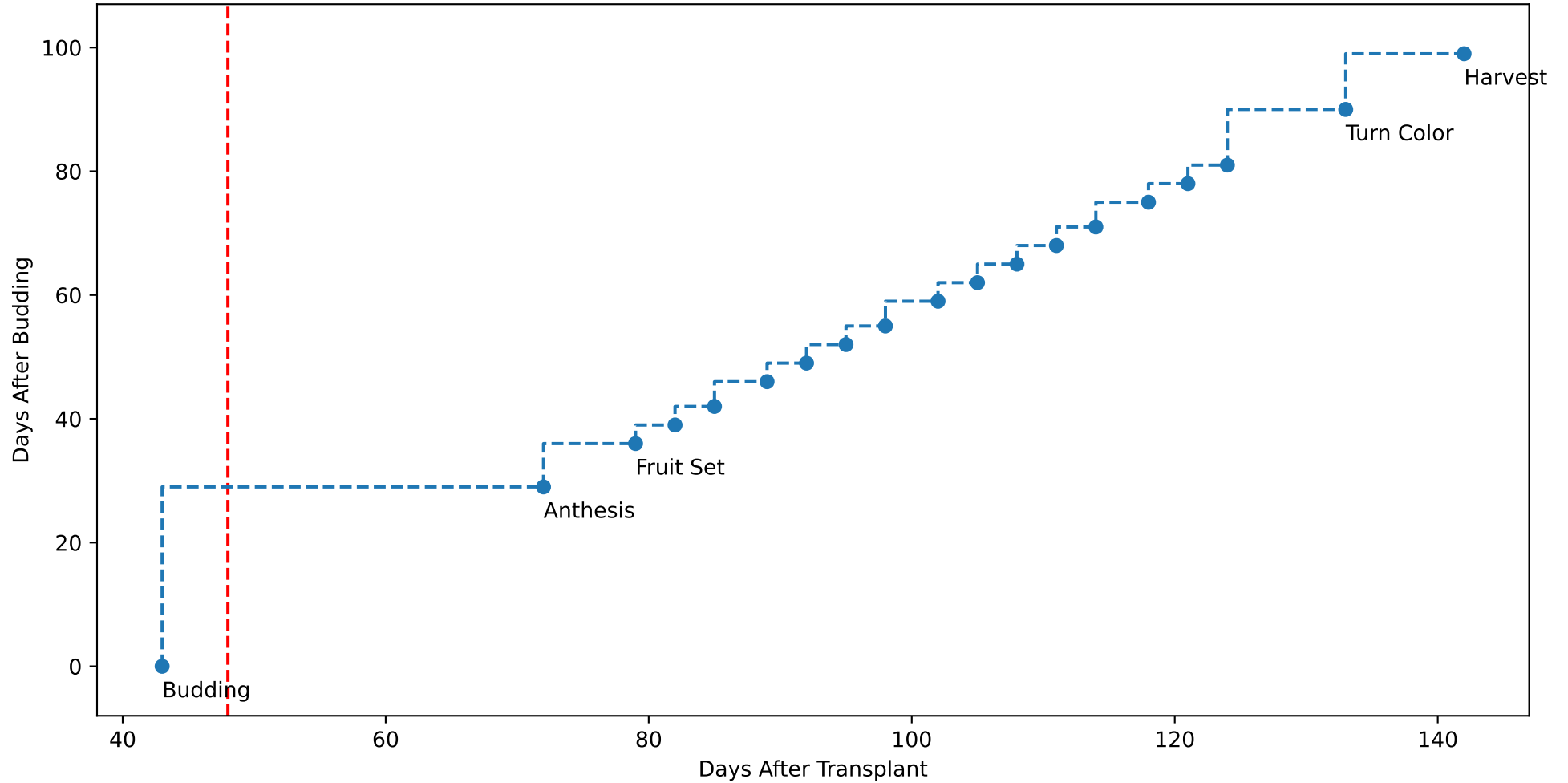
P9AE TsN2 (plot by adjDAT)



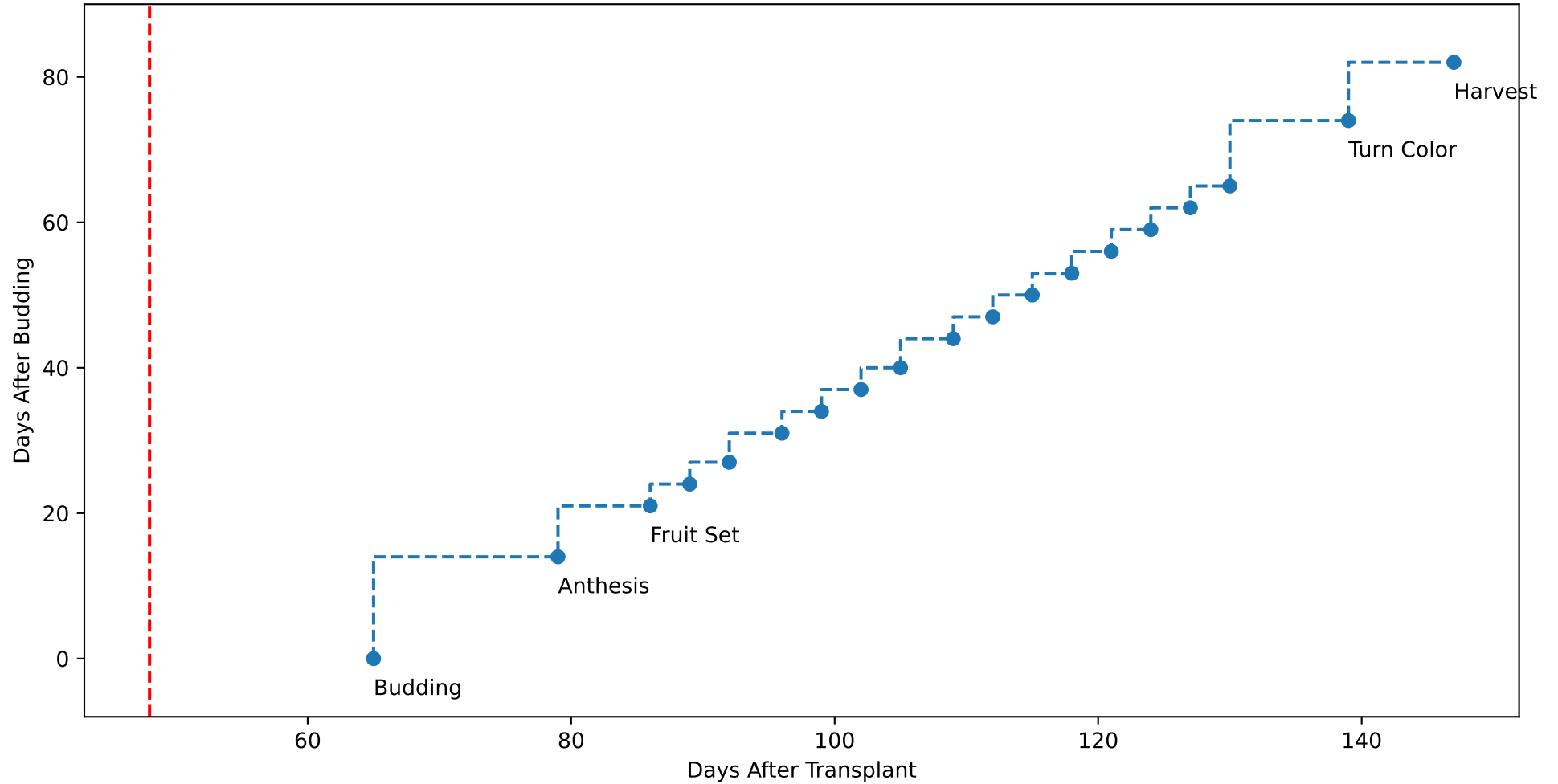
P9AE TsN3 (plot by adjDAT)



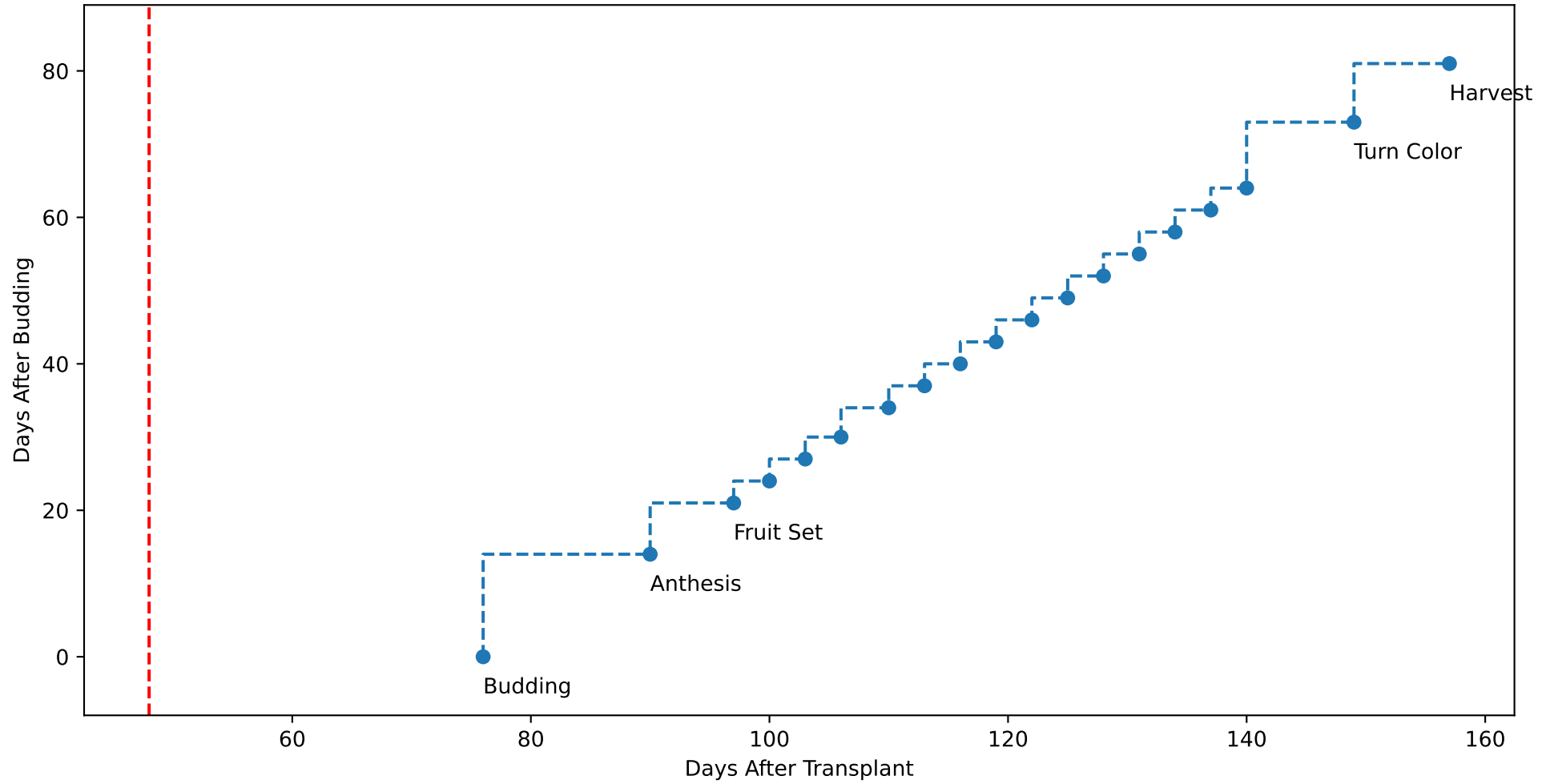
P9AE TsN4 (plot by adjDAT)



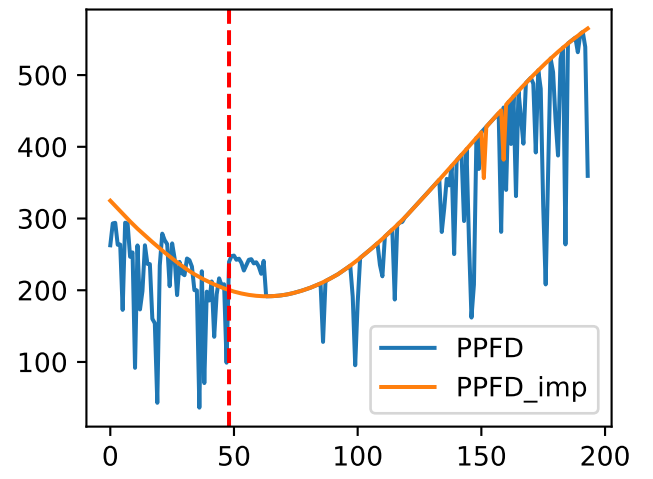
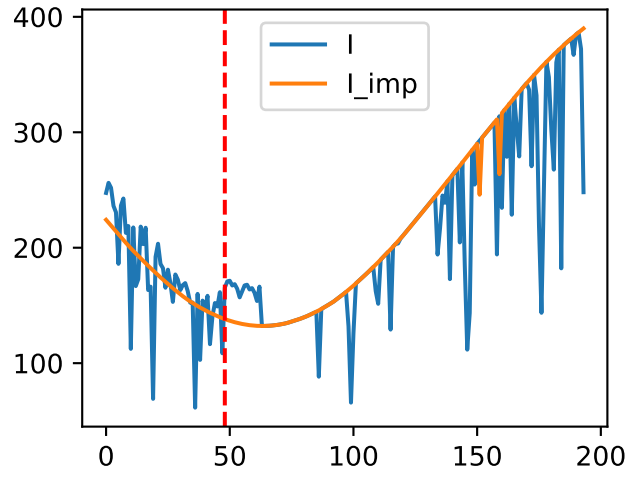
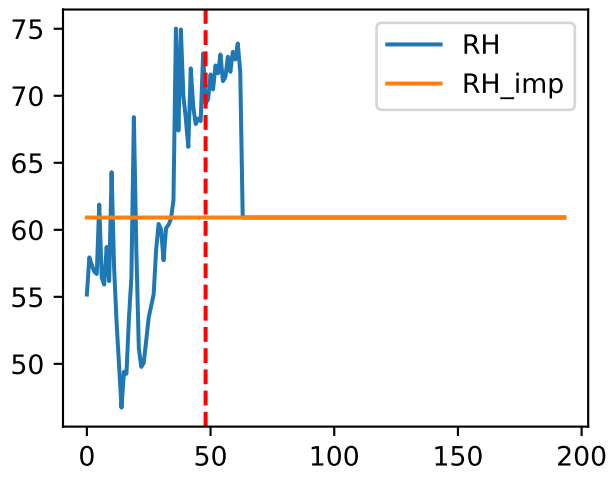
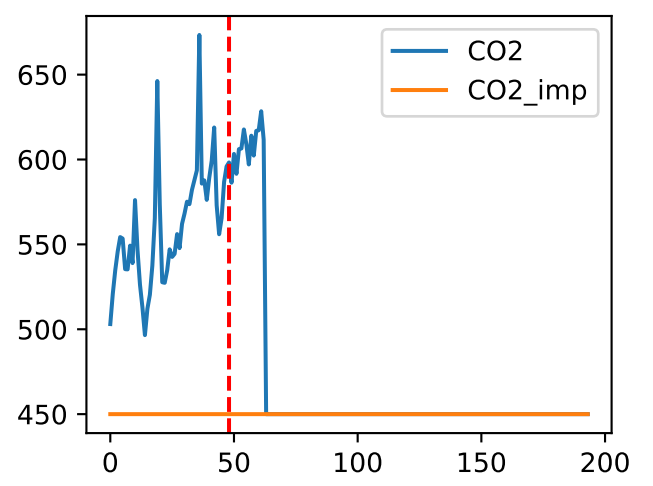
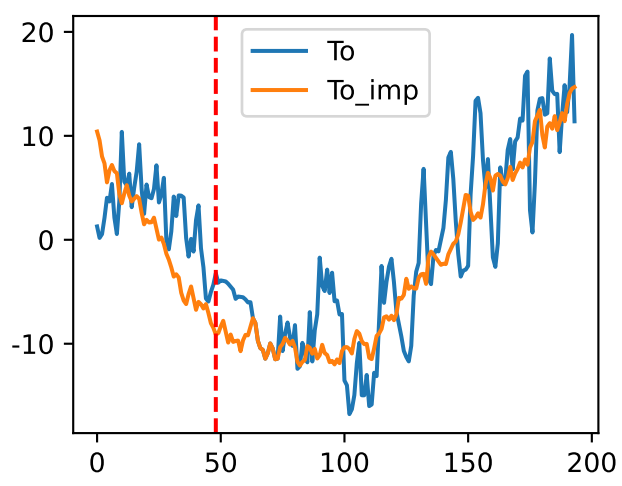
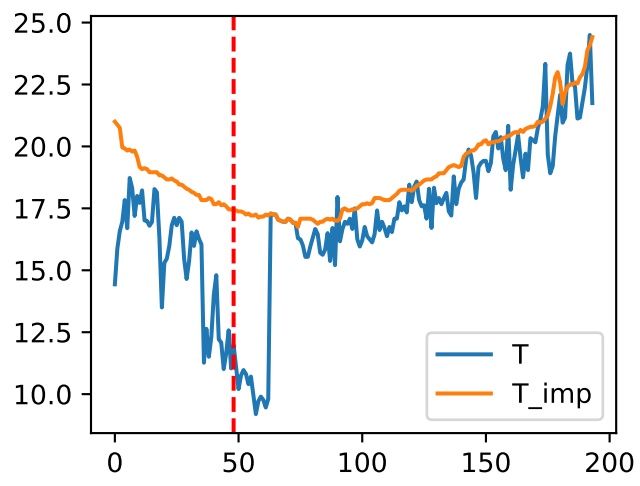
P9AE TsN5 (plot by adjDAT)



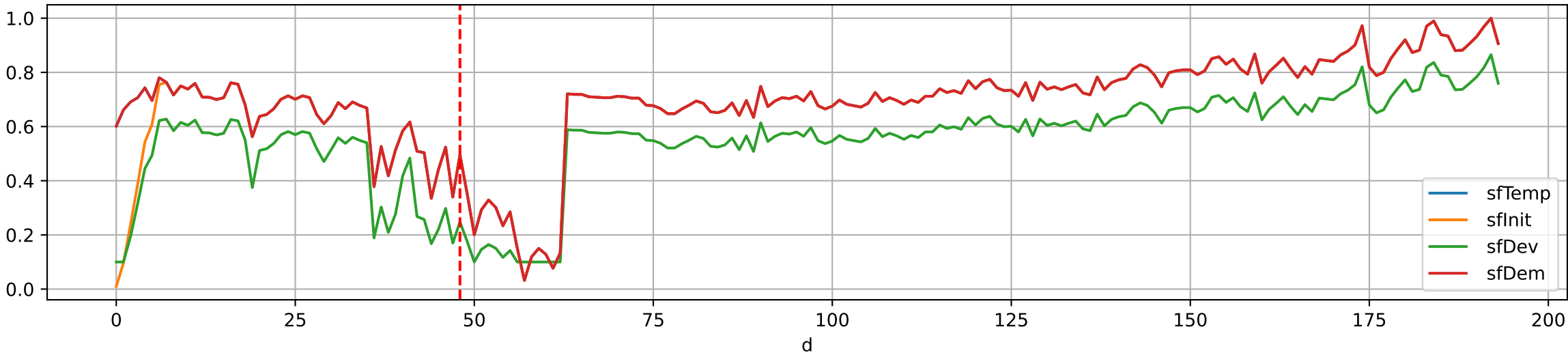
P9AE TsN6 (plot by adjDAT)



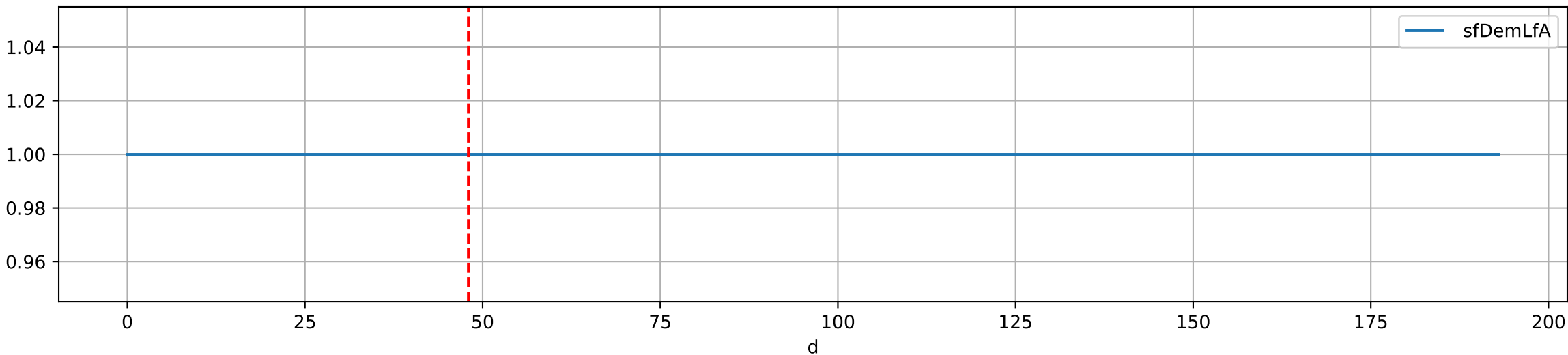
Plot Env Data



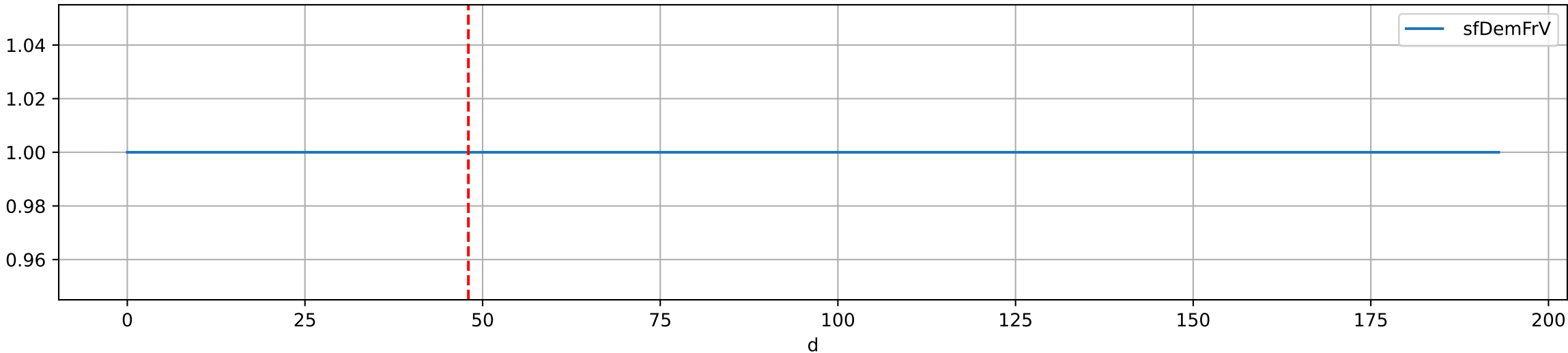
Plot [['sfTemp', 'sfInnit', 'sfDev', 'sfDem']]

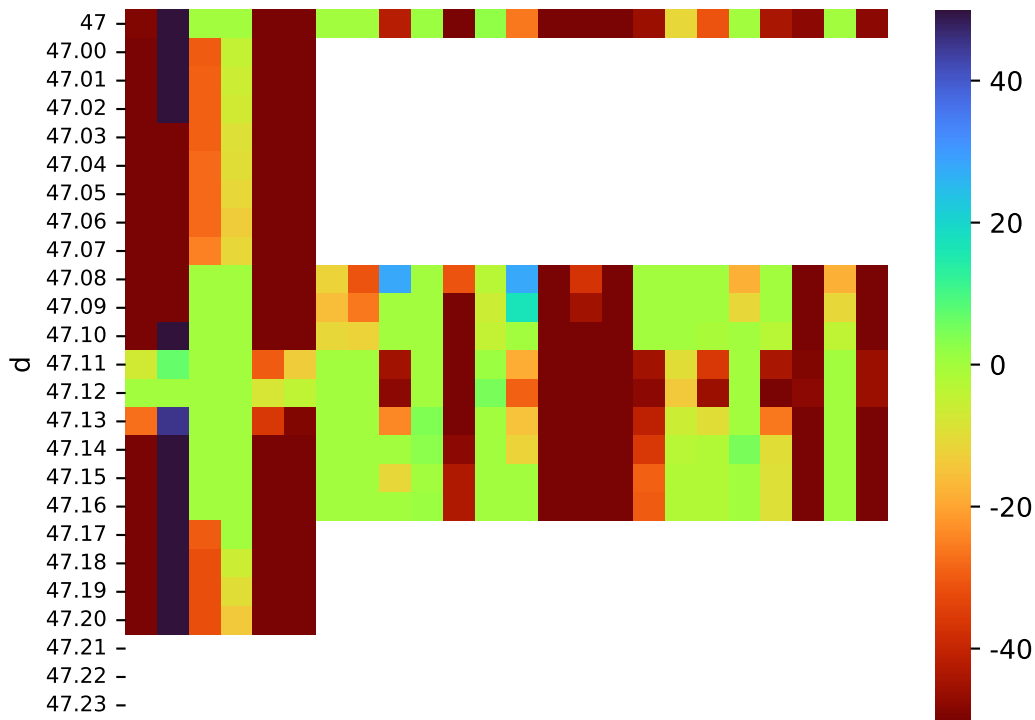


Plot ['sfDemLfA']



Plot ['sfDemFrV']





Plot EnvOpt Decision

