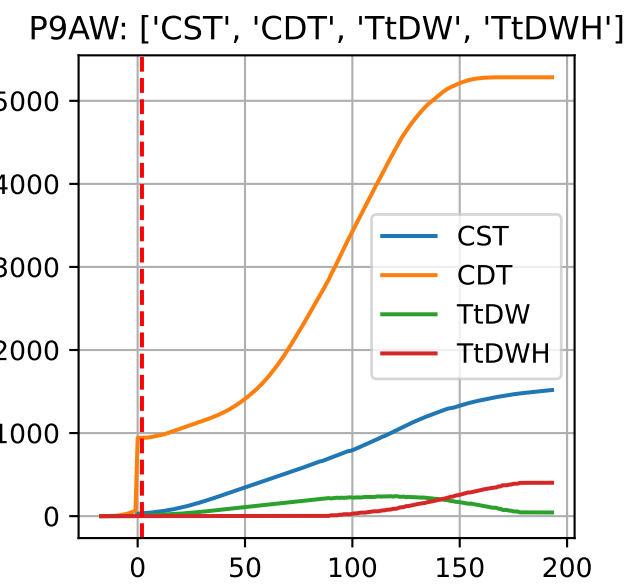
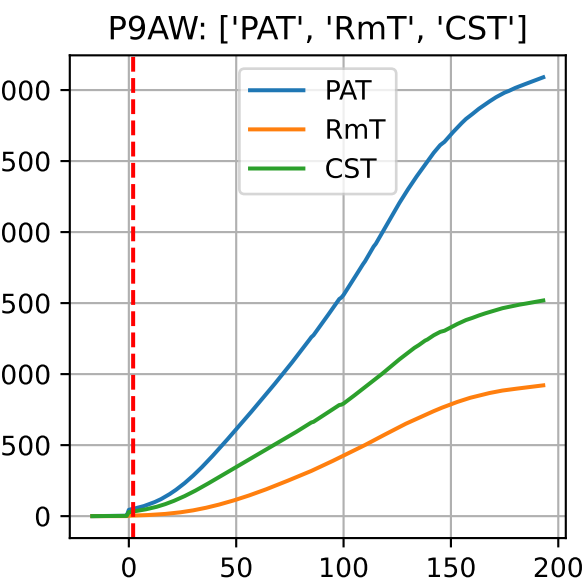
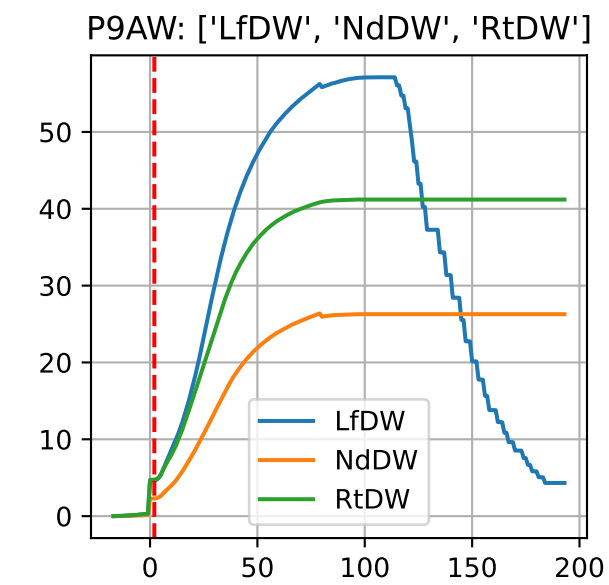
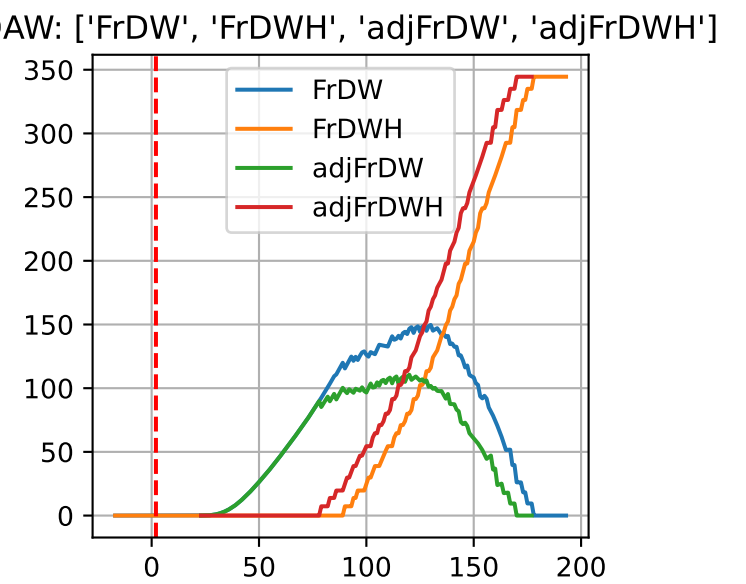
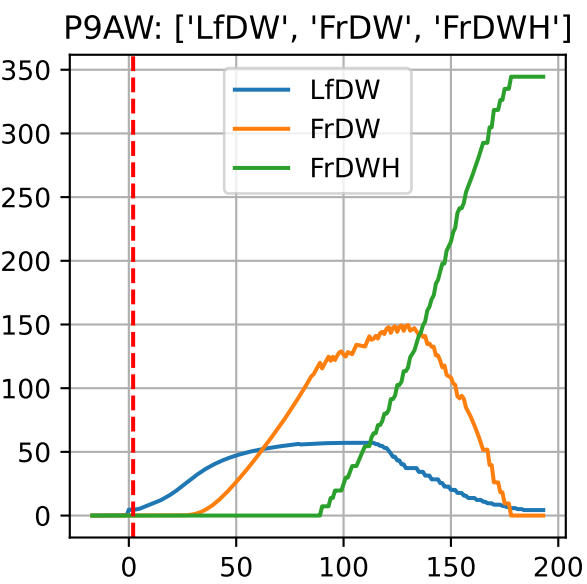
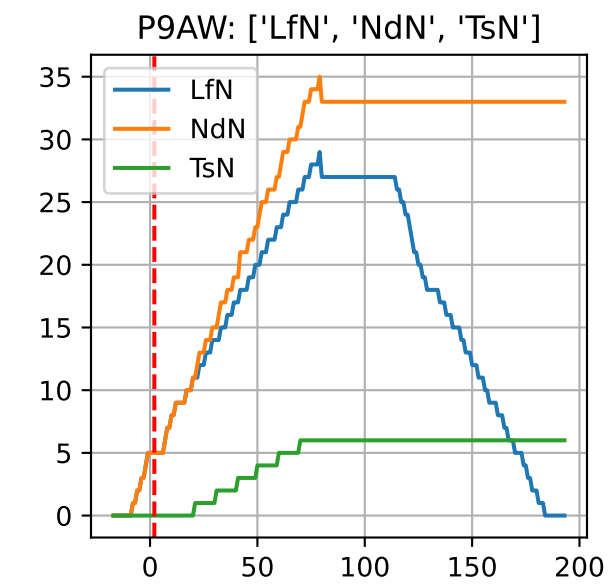
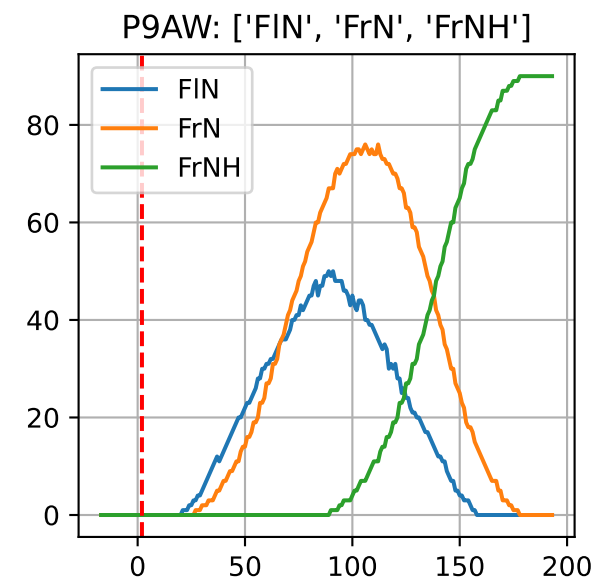
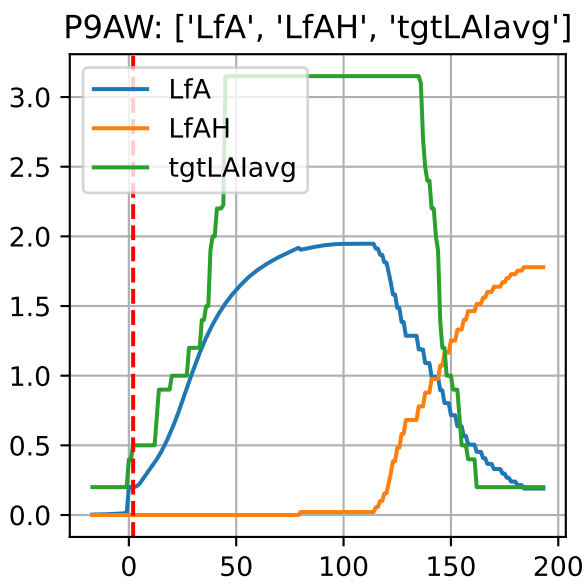
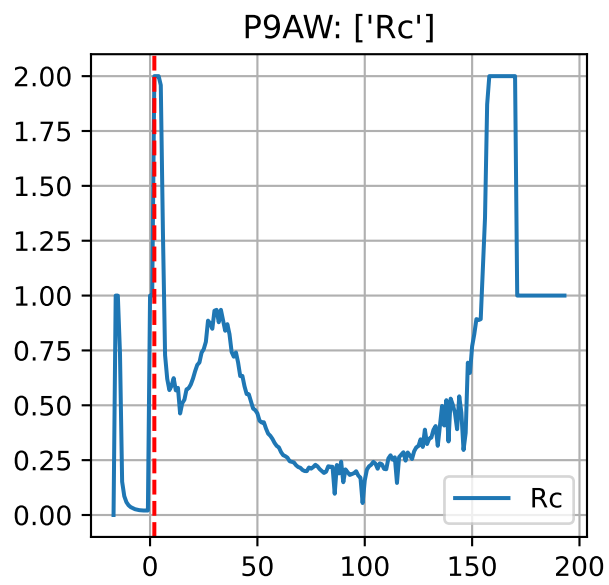
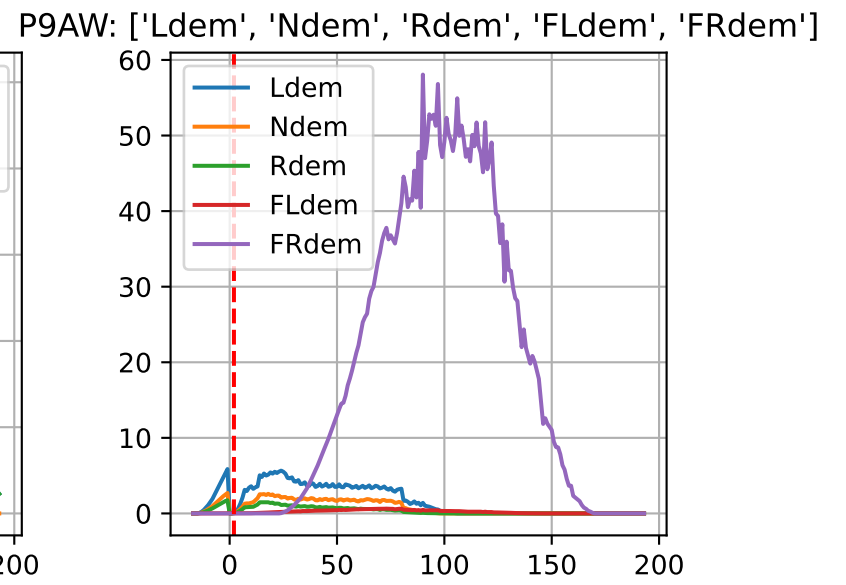
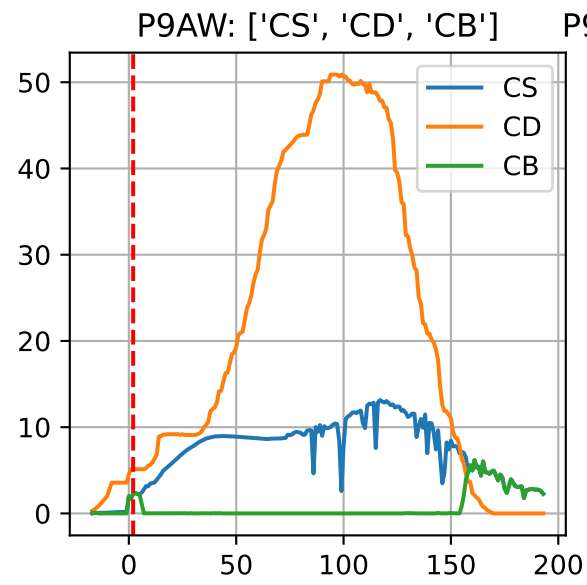
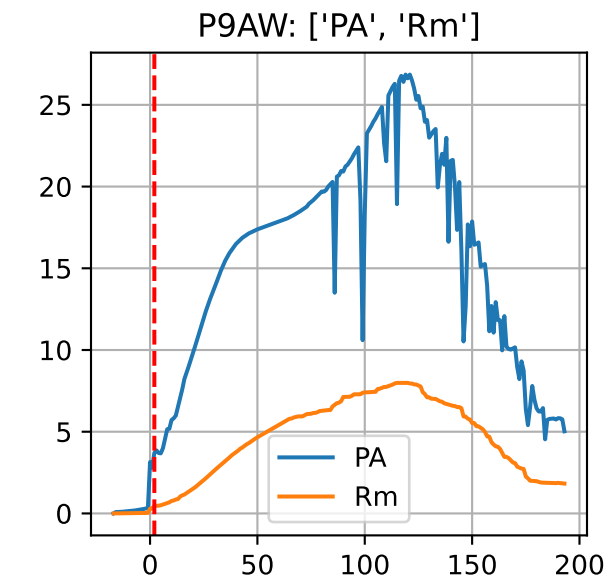
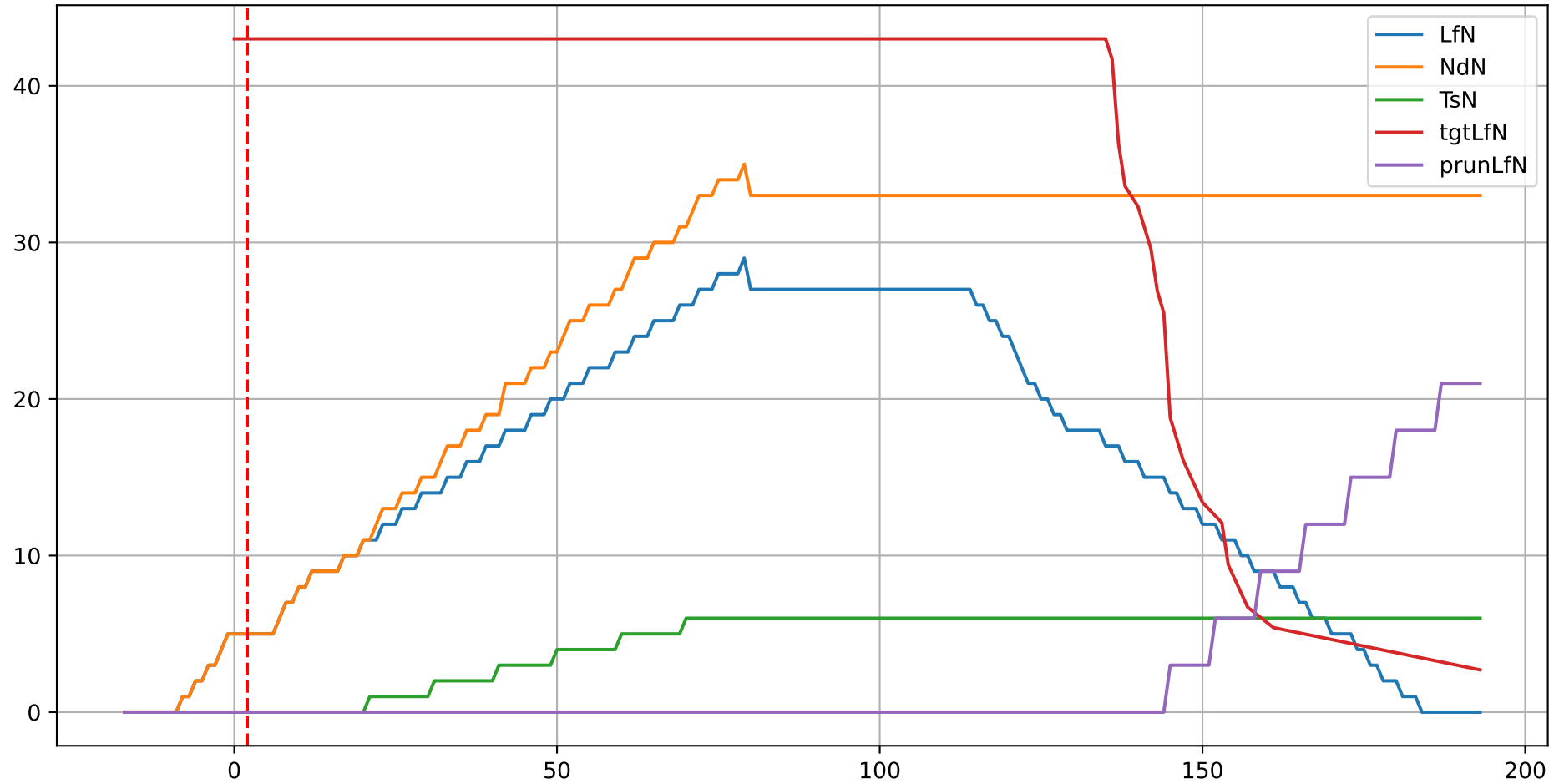


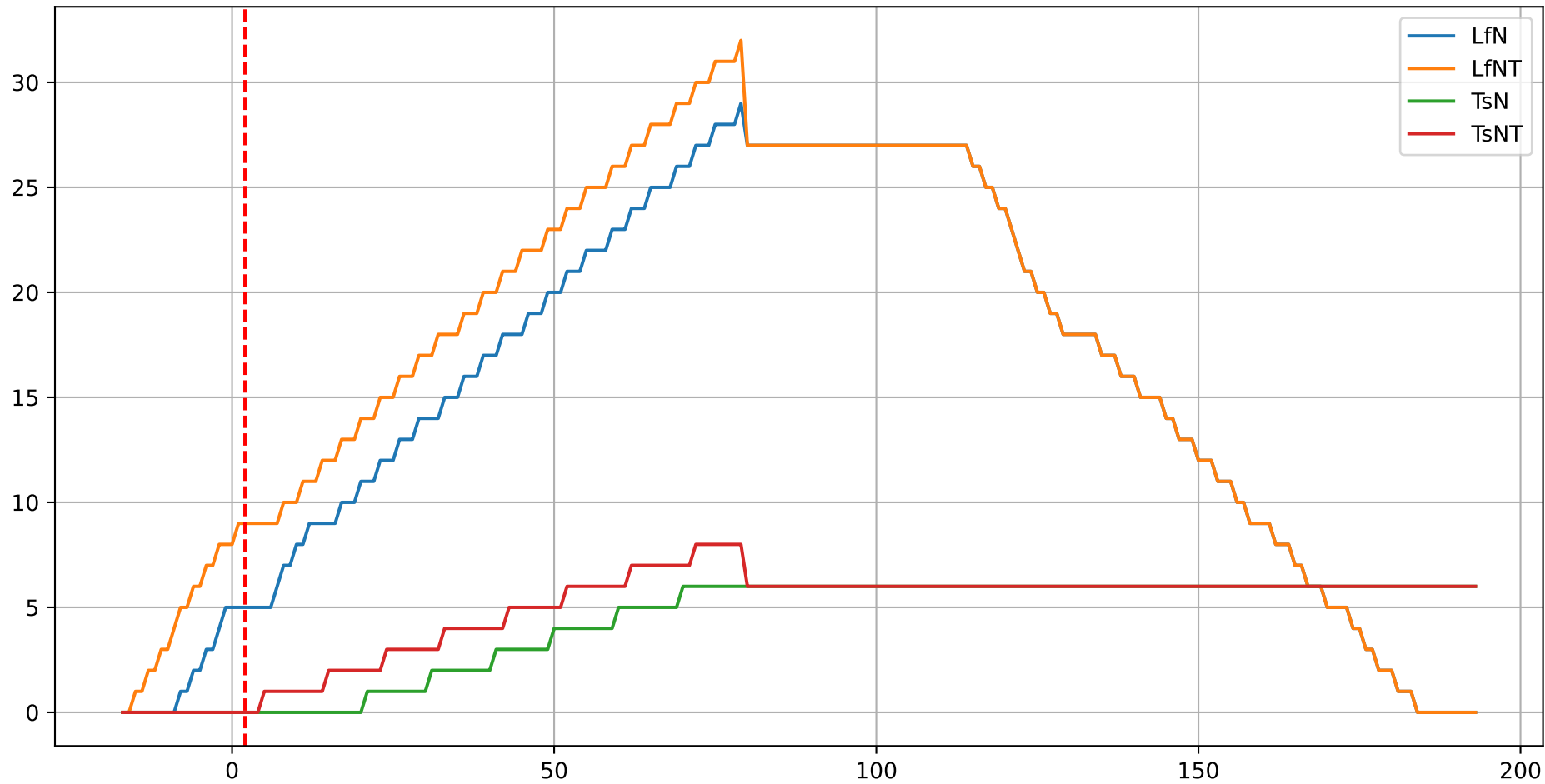
Model Prediction (P9AW)



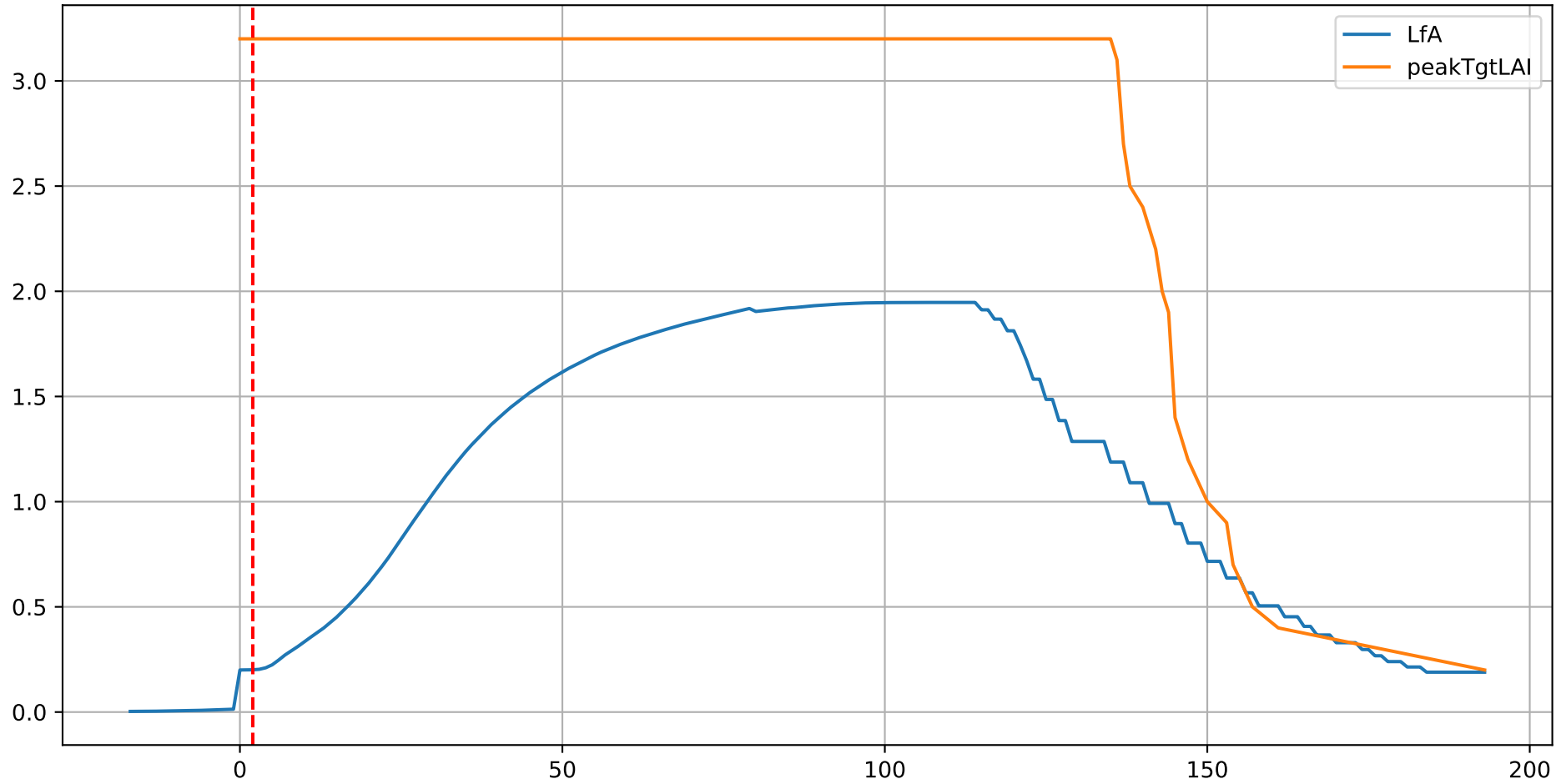
P9AW: ['LfN', 'NdN', 'TsN', 'tgtLfN', 'prunLfN']



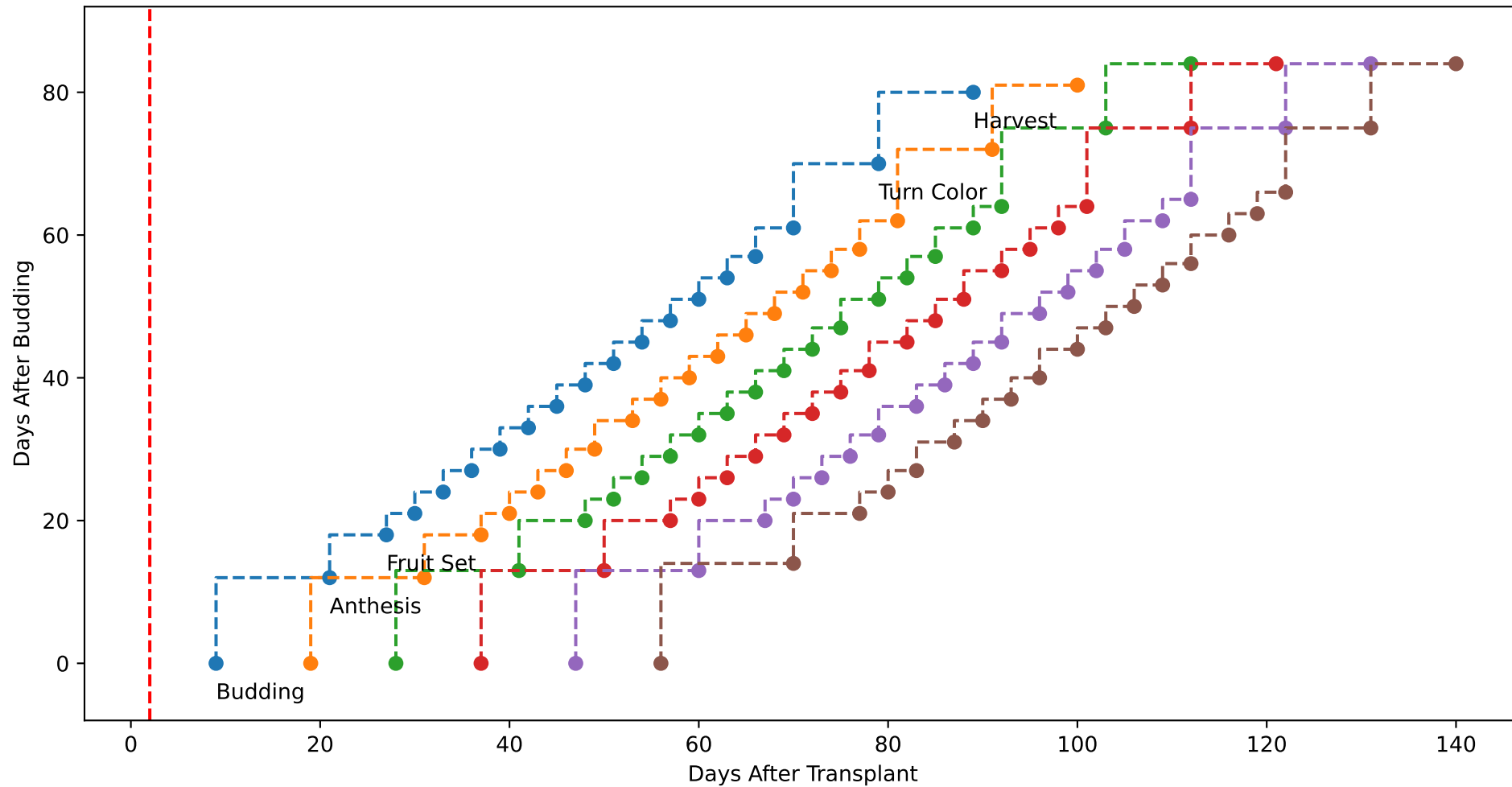
P9AW: ['LfN', 'LfNT', 'TsN', 'TsNT']



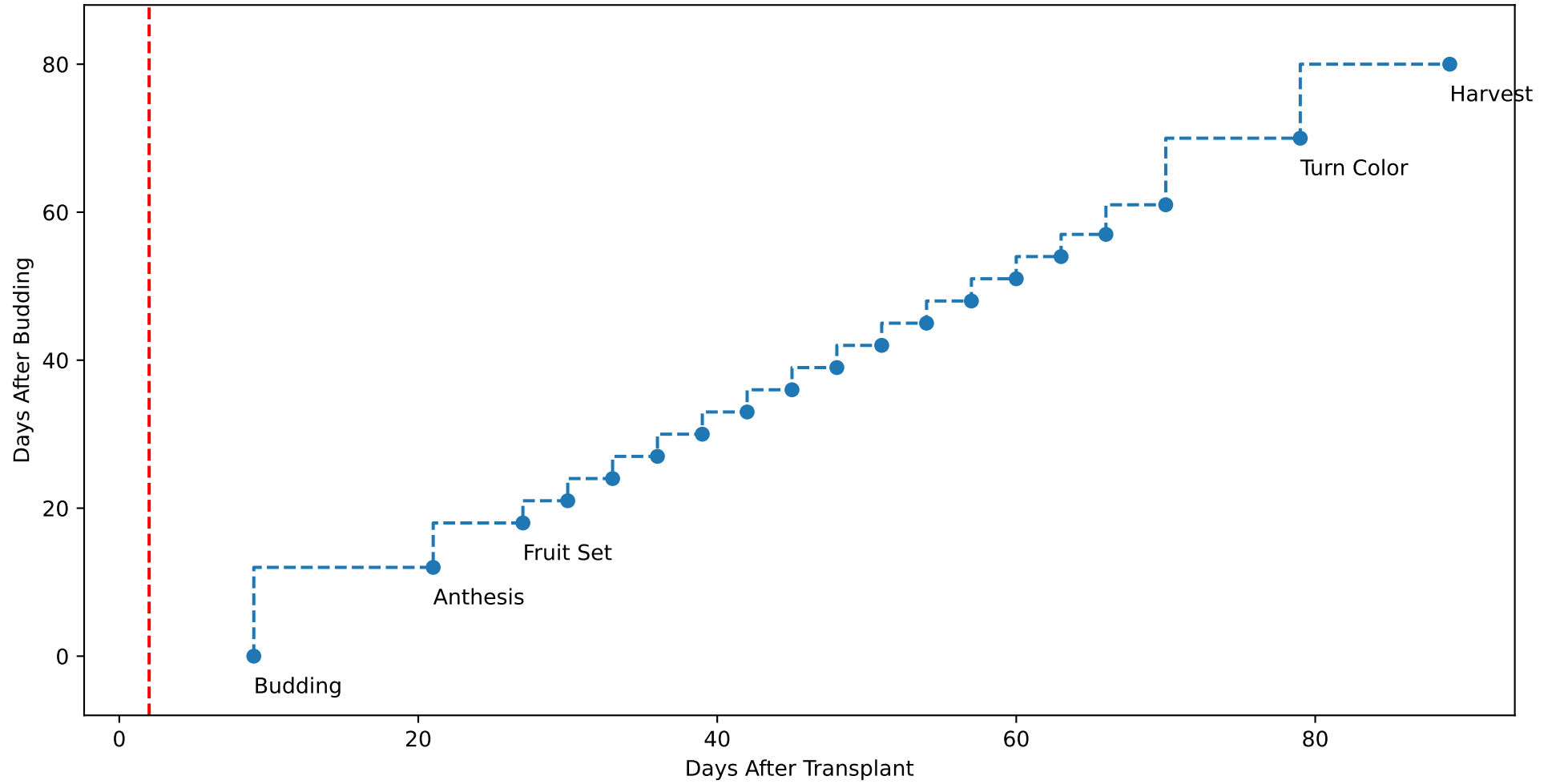
P9AW: ['LfA', 'peakTgtLAI']



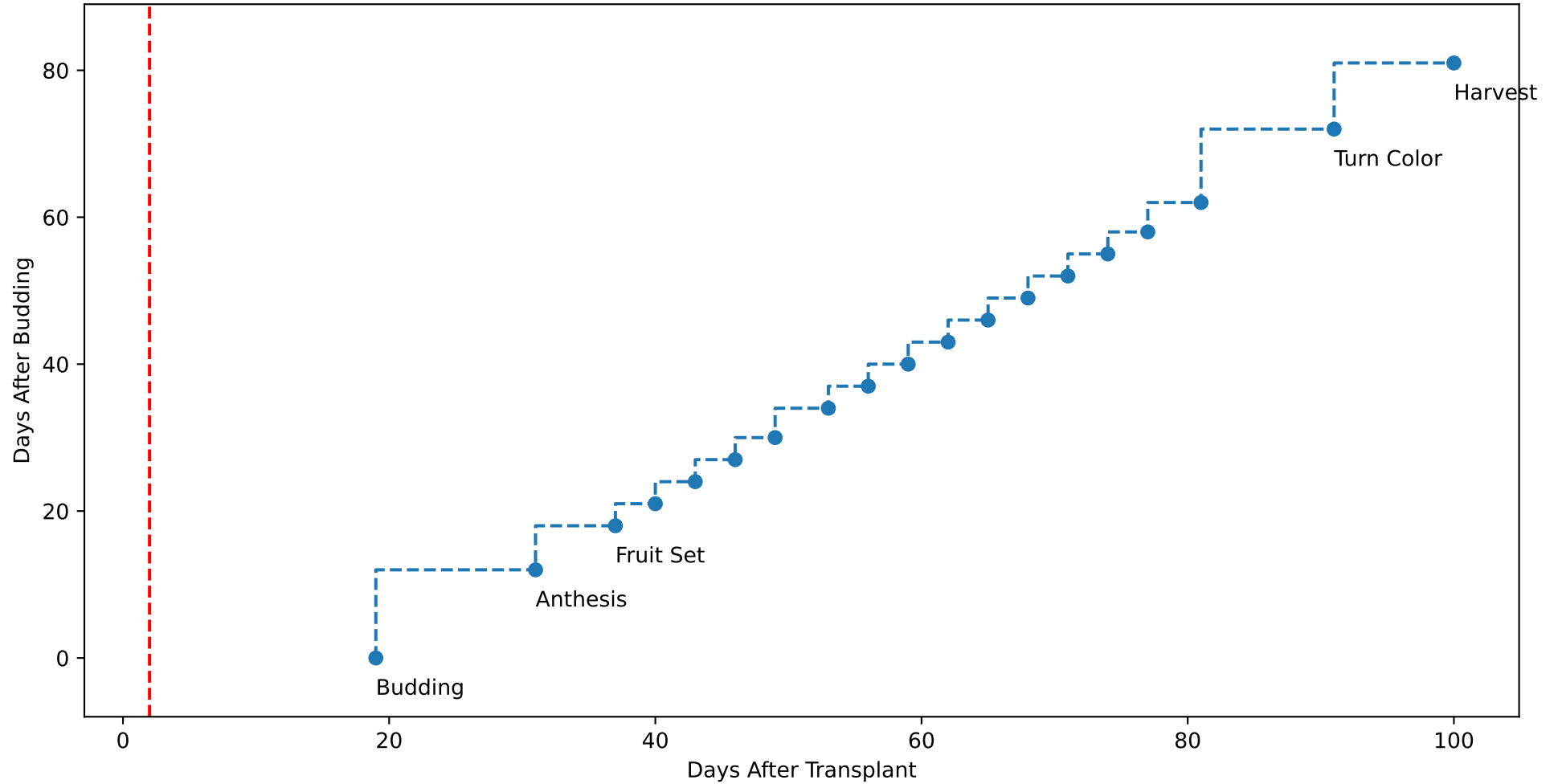
P9AW (plot by DAT)



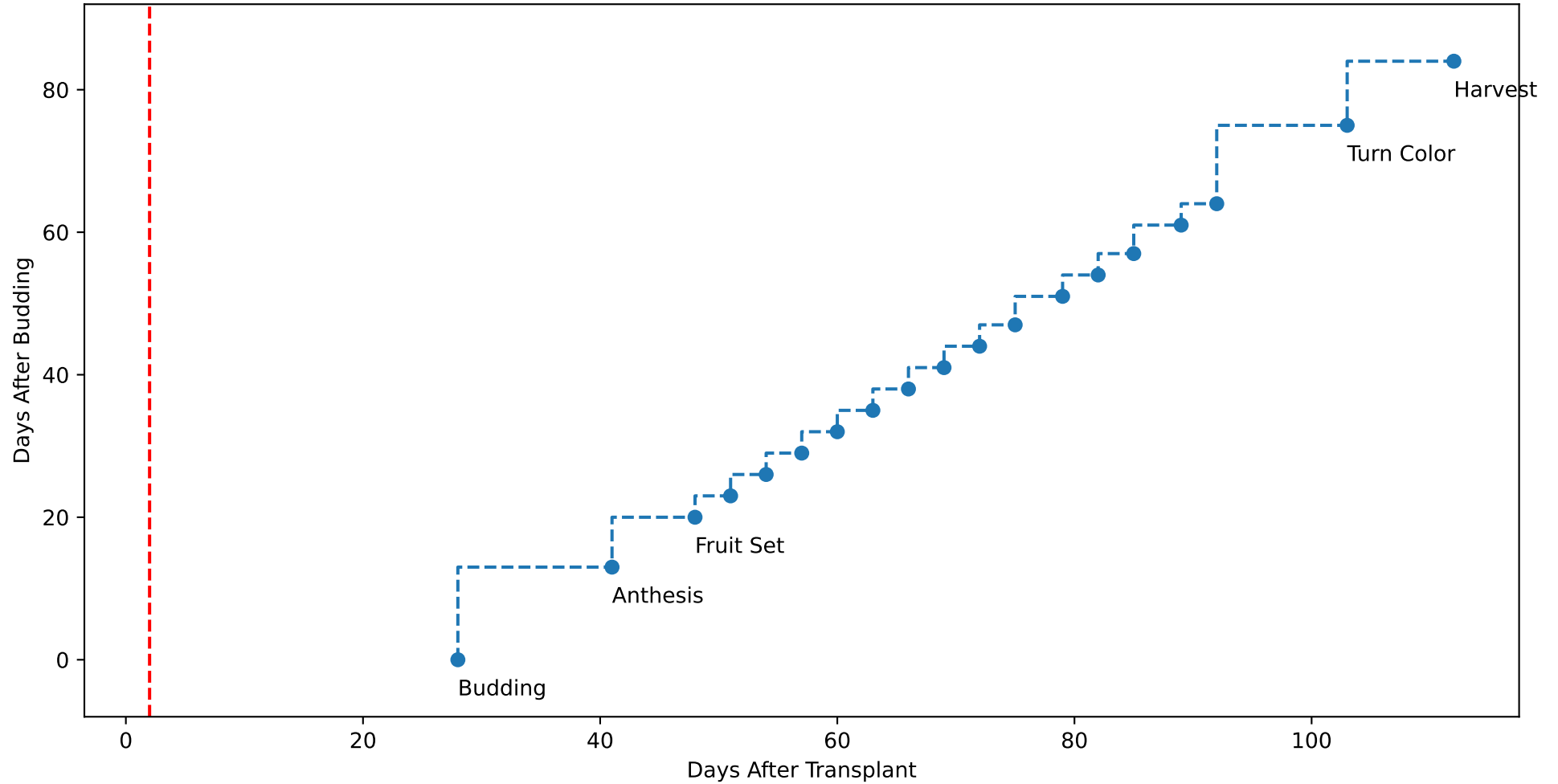
P9AW TsN1 (plot by DAT)



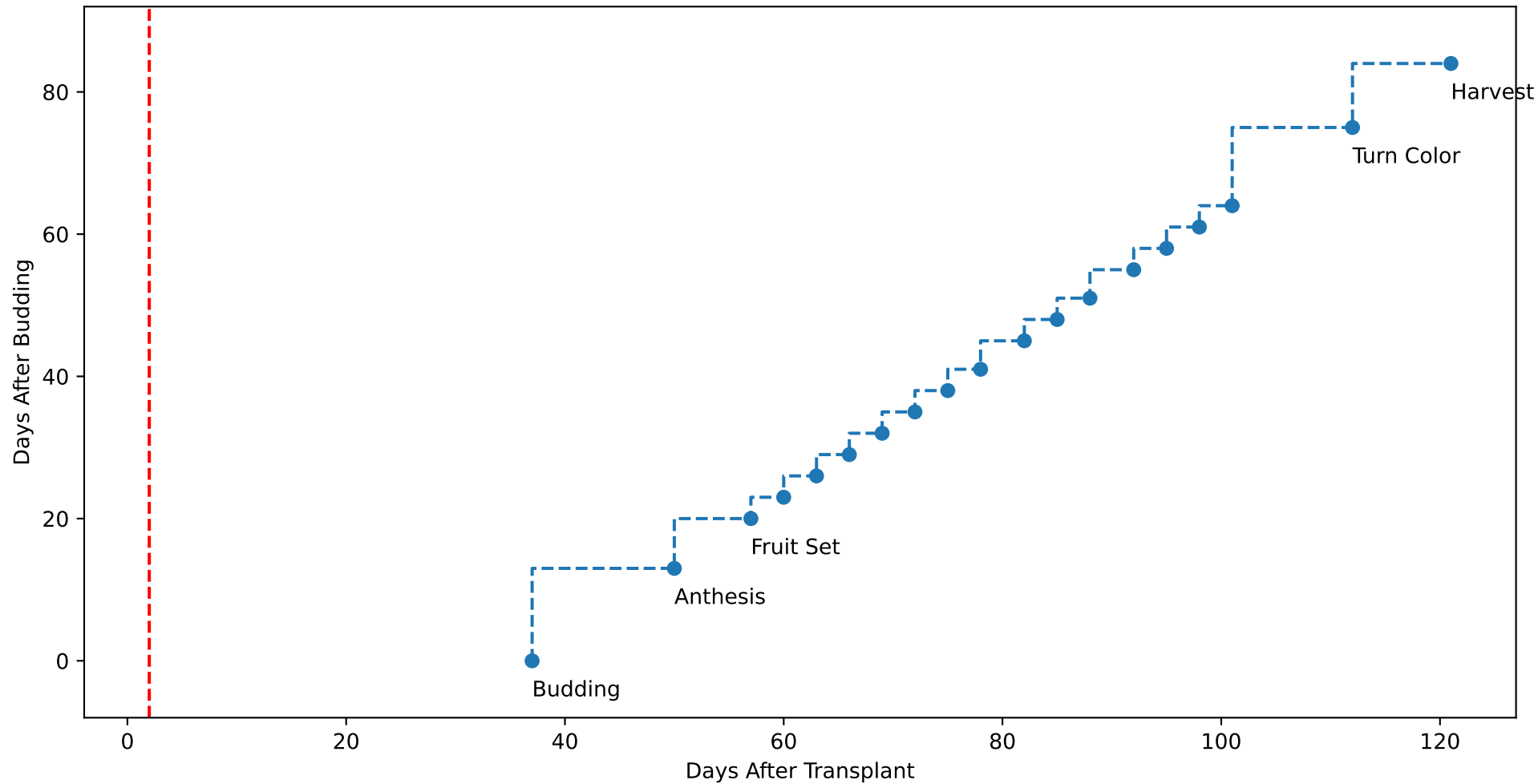
P9AW TsN2 (plot by DAT)



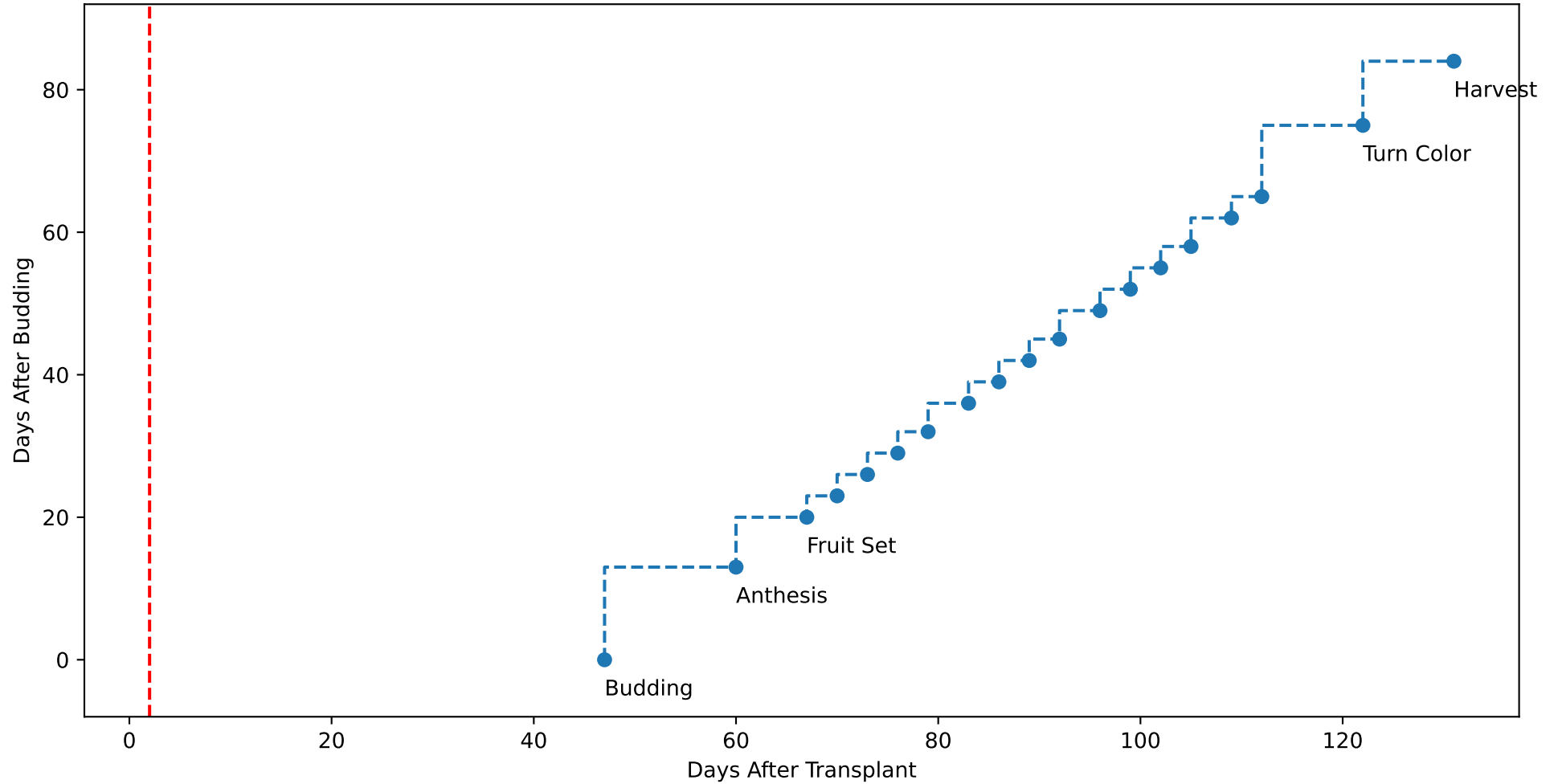
P9AW TsN3 (plot by DAT)



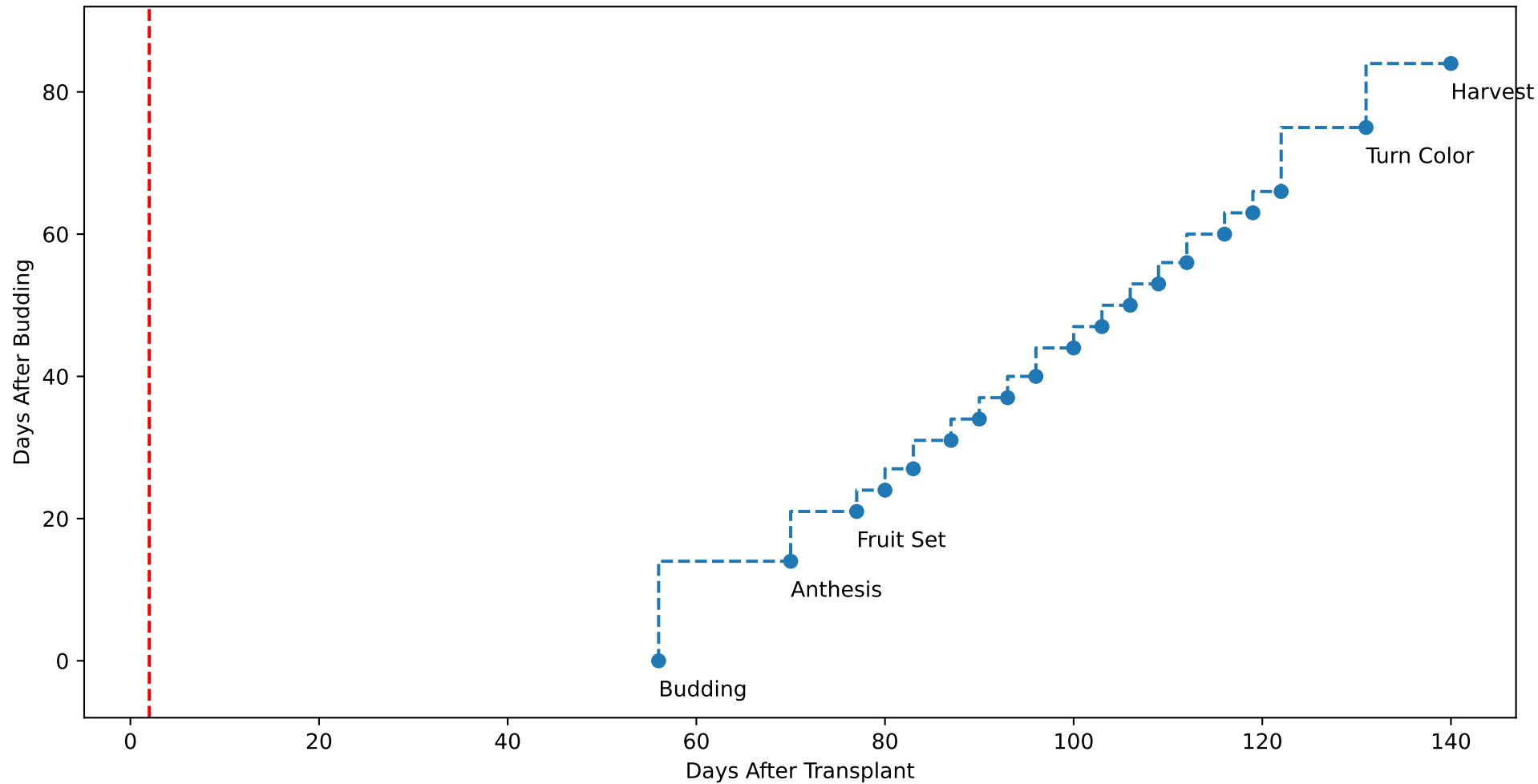
P9AW TsN4 (plot by DAT)



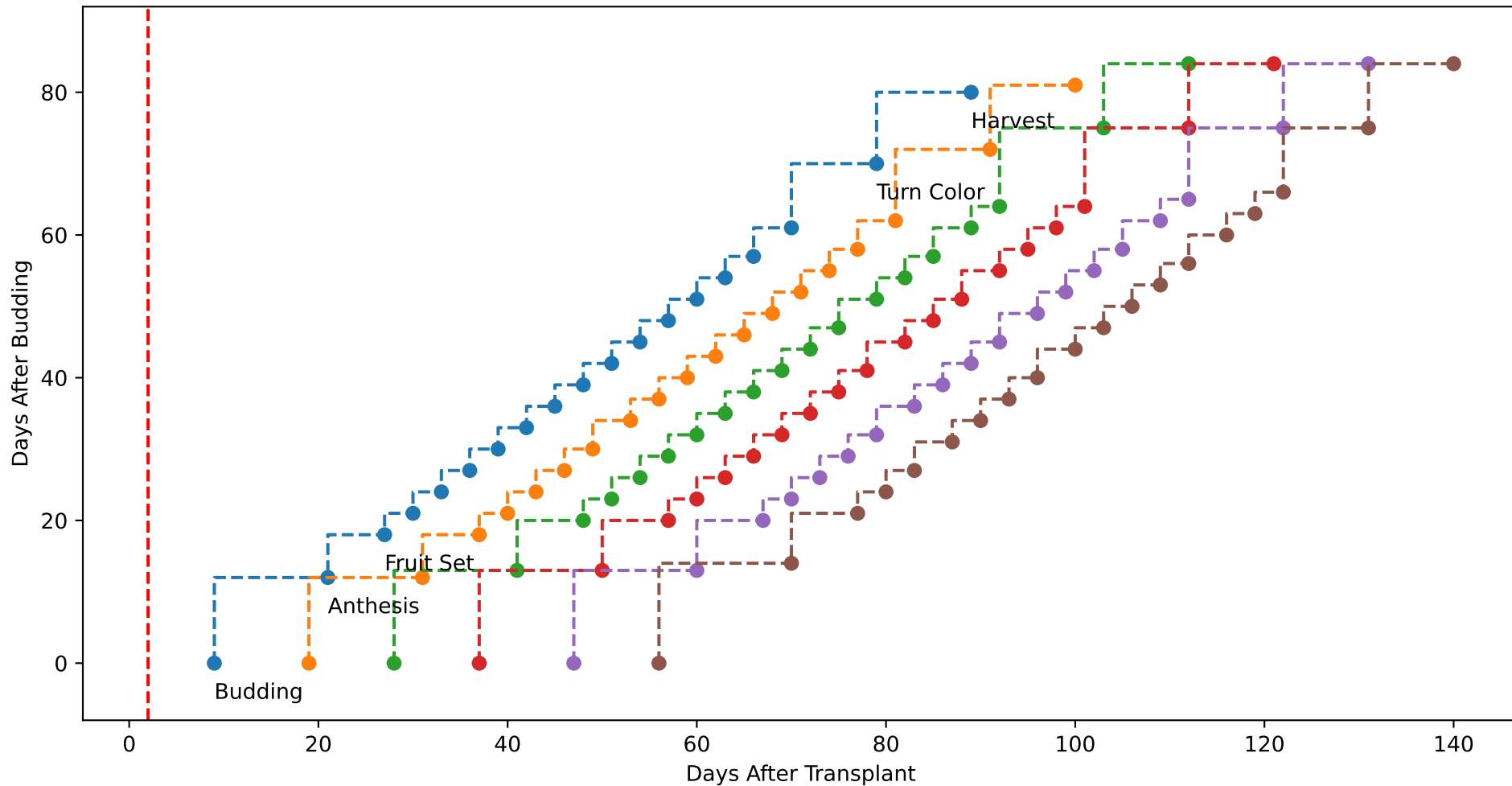
P9AW TsN5 (plot by DAT)



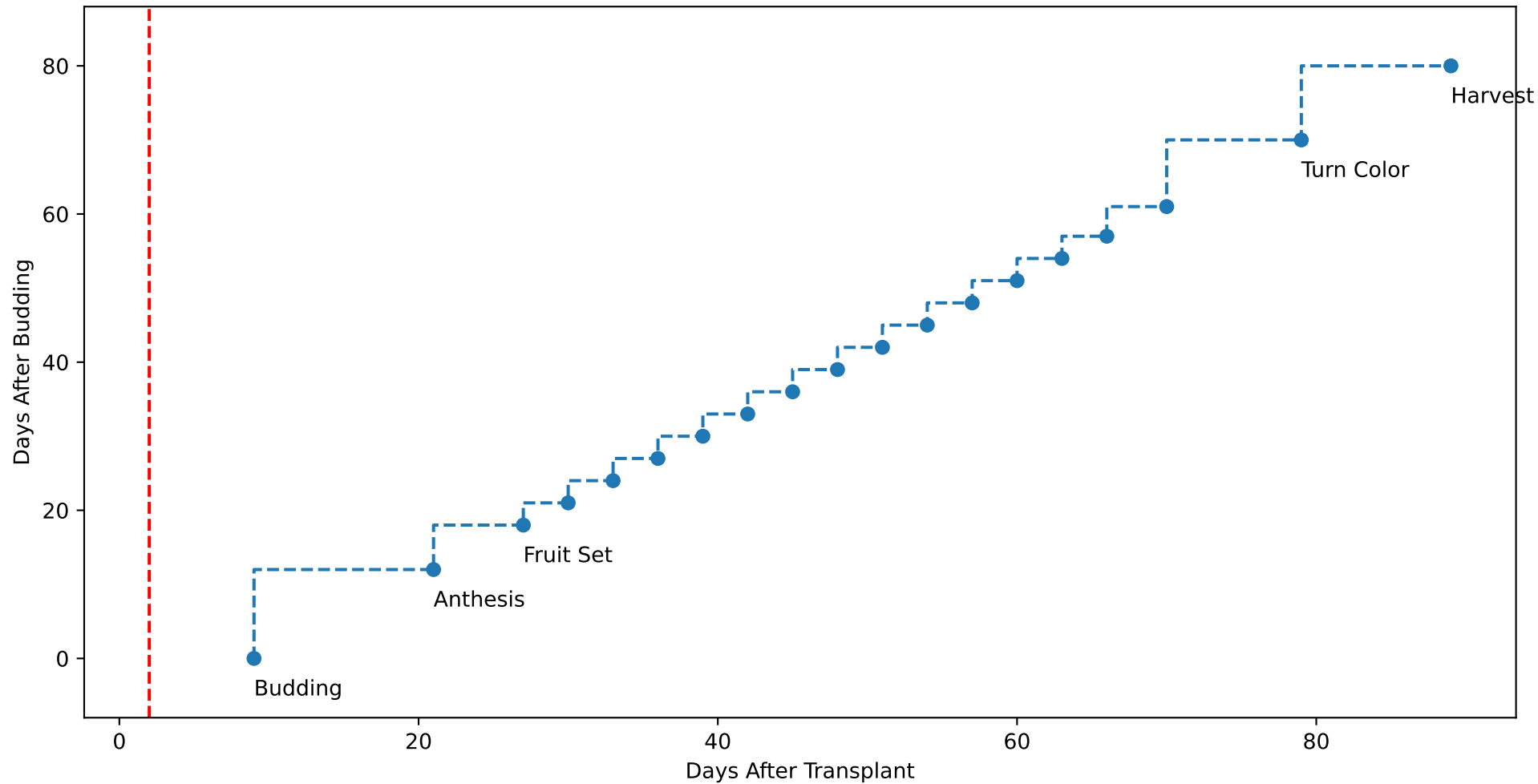
P9AW TsN6 (plot by DAT)



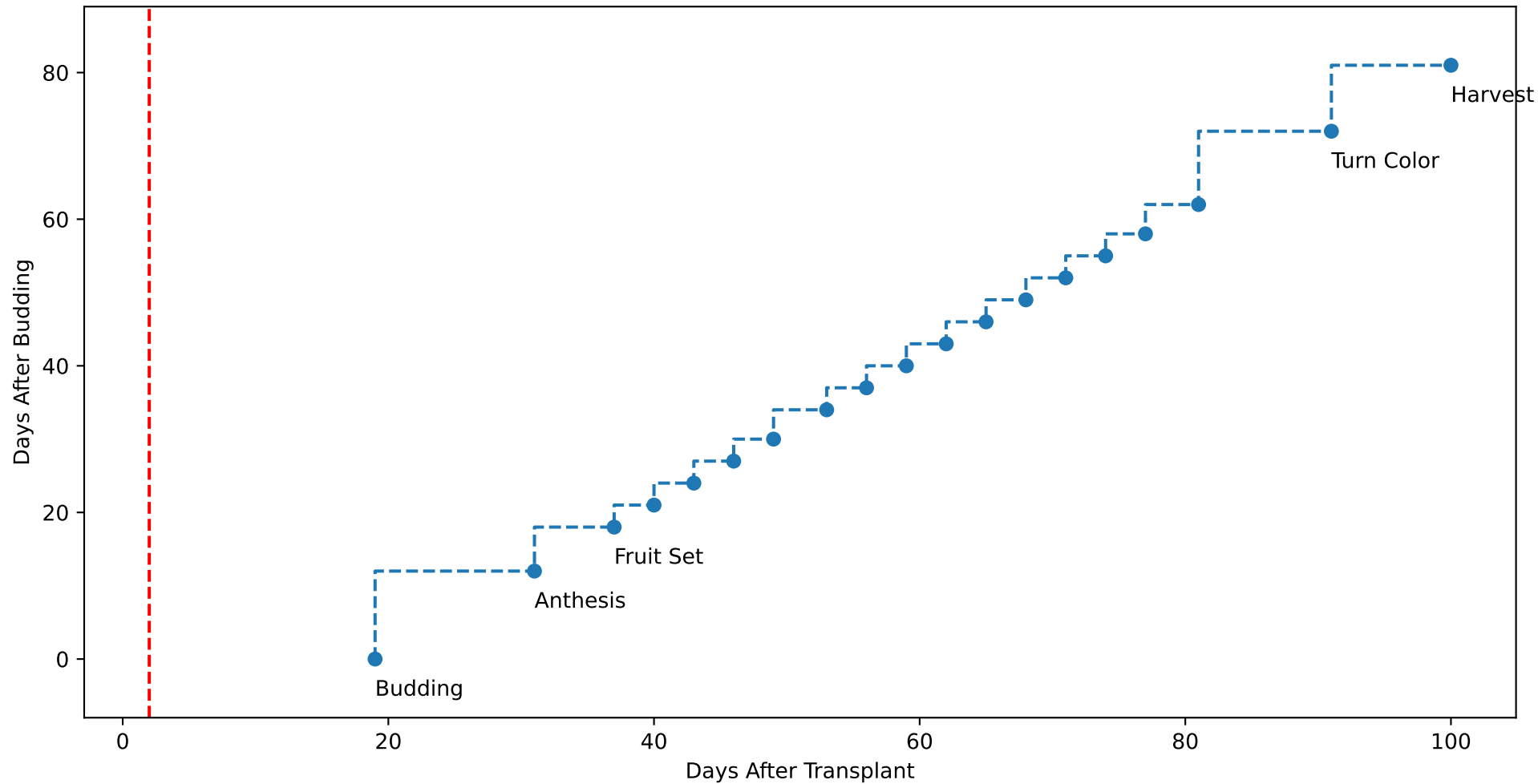
P9AW (plot by adjDAT)



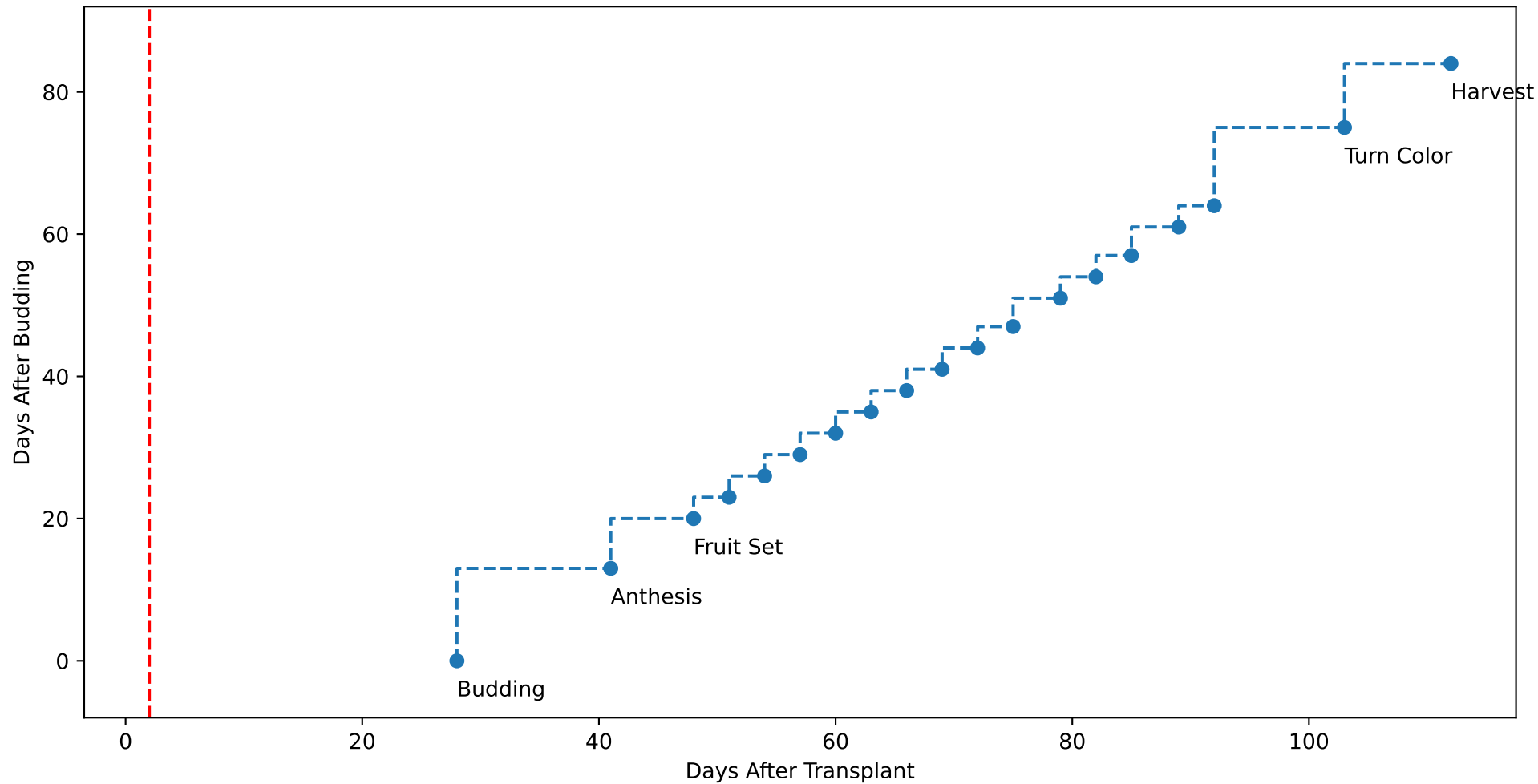
P9AW TsN1 (plot by adjDAT)



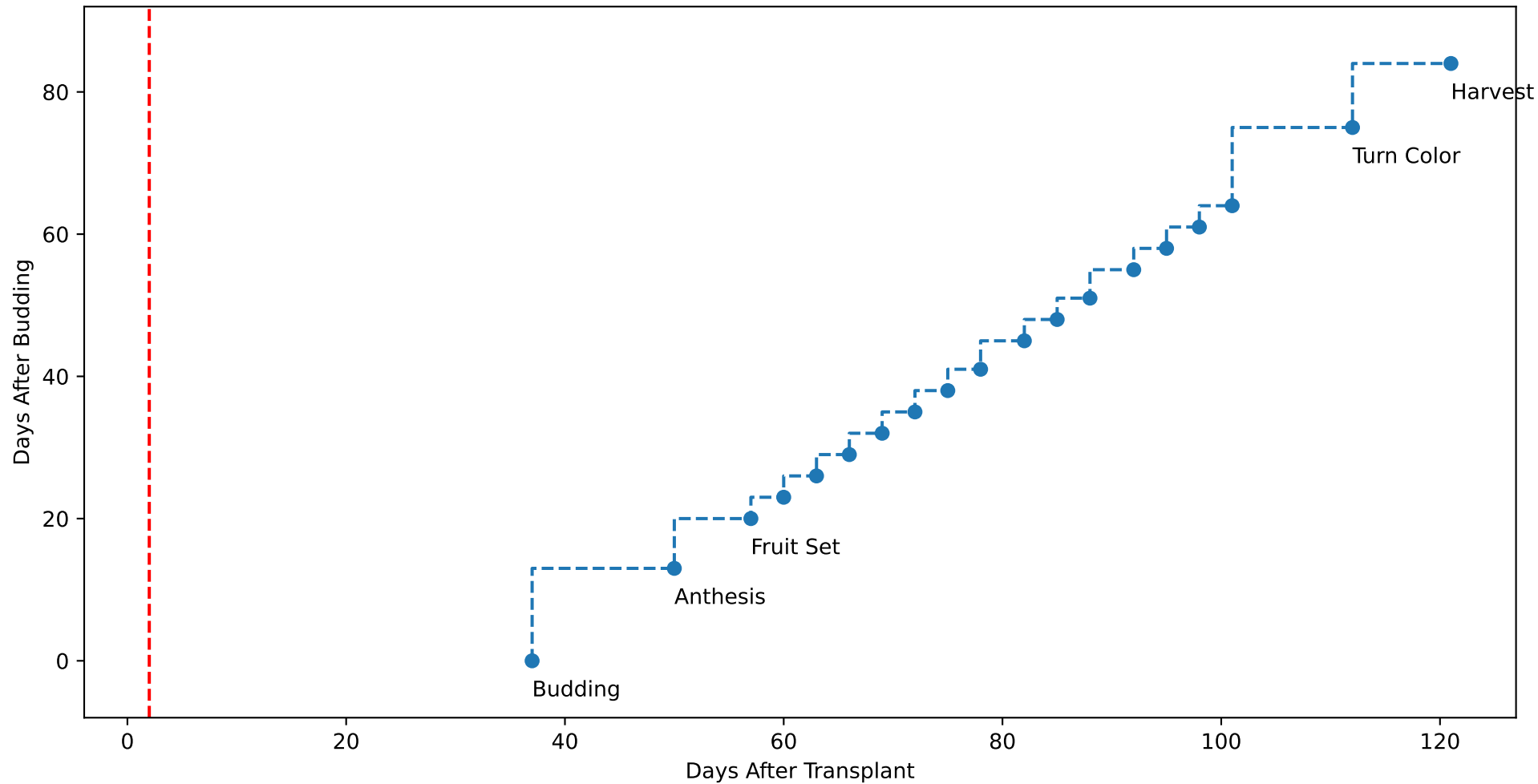
P9AW TsN2 (plot by adjDAT)



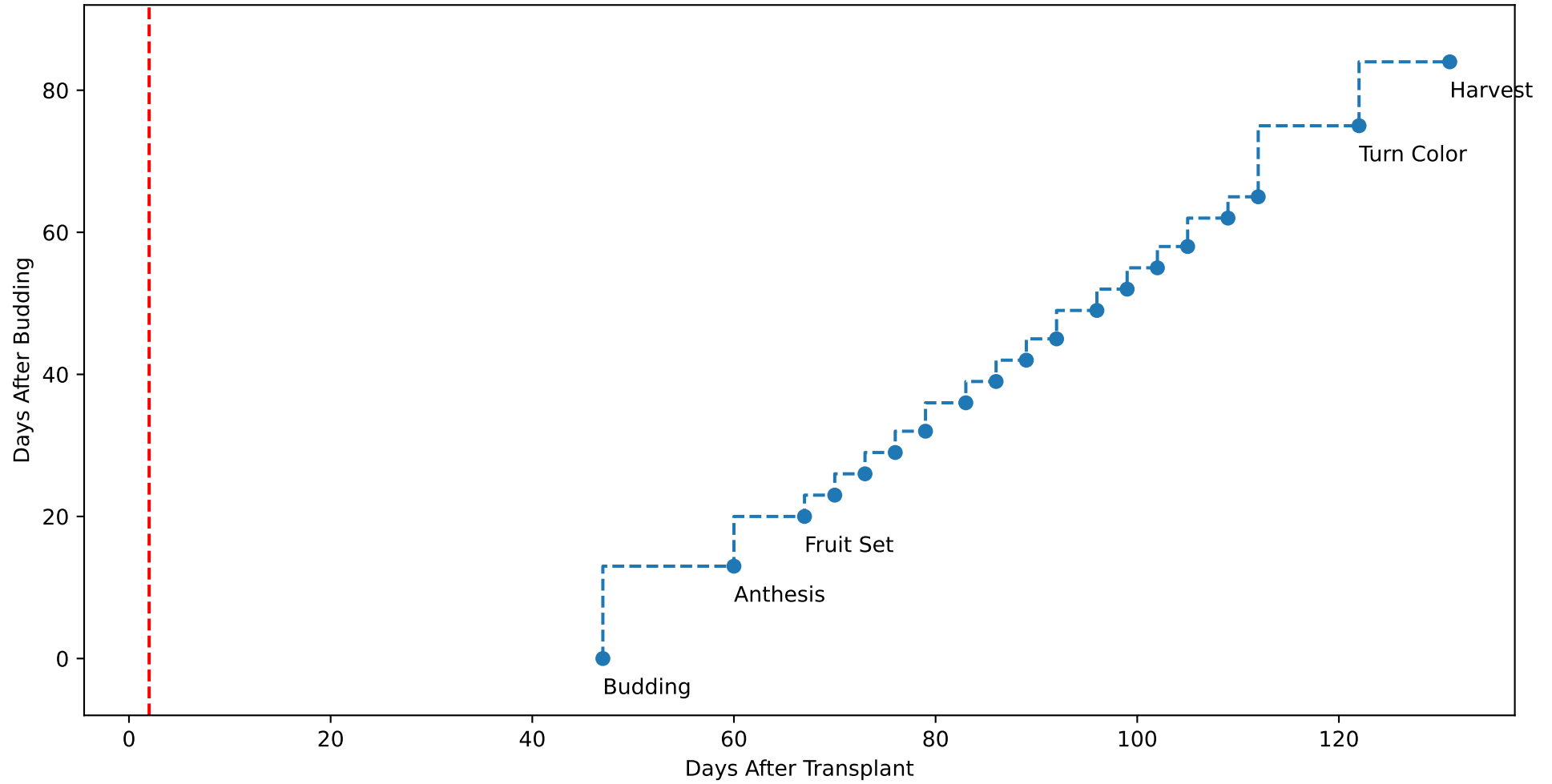
P9AW TsN3 (plot by adjDAT)



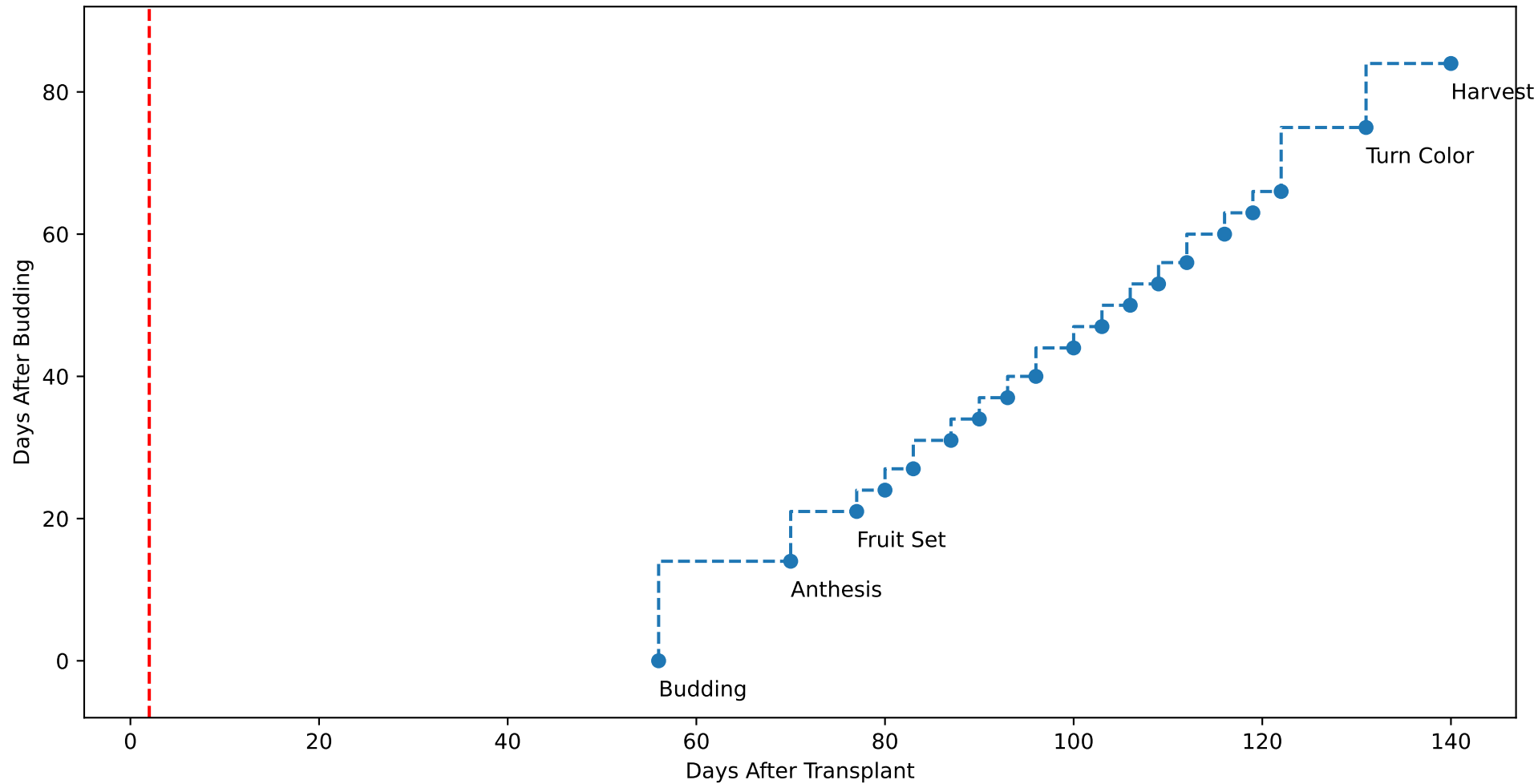
P9AW TsN4 (plot by adjDAT)



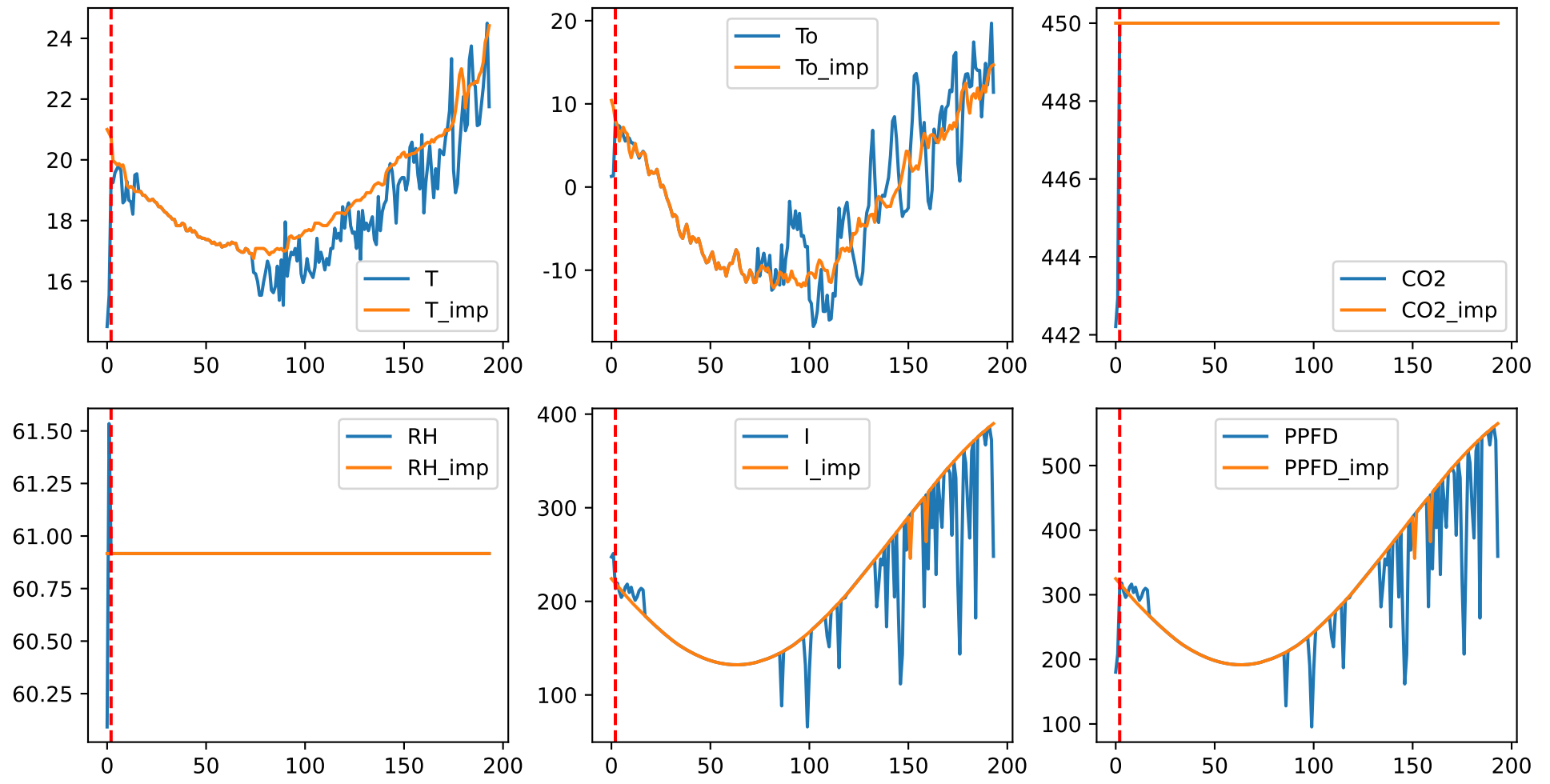
P9AW TsN5 (plot by adjDAT)



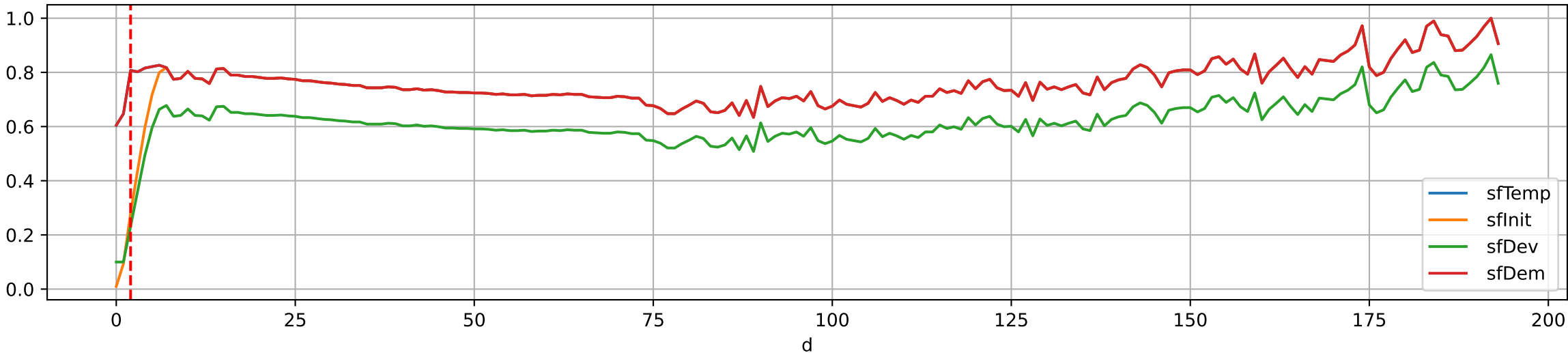
P9AW TsN6 (plot by adjDAT)



Plot Env Data



Plot [['sfTemp', 'sfInit', 'sfDev', 'sfDem']]





Plot EnvOpt Decision

