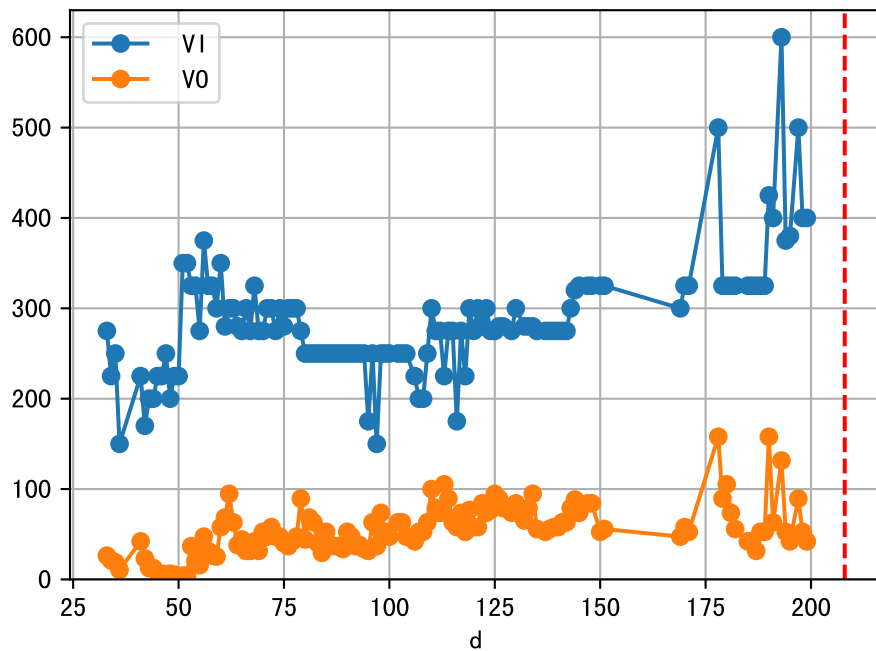
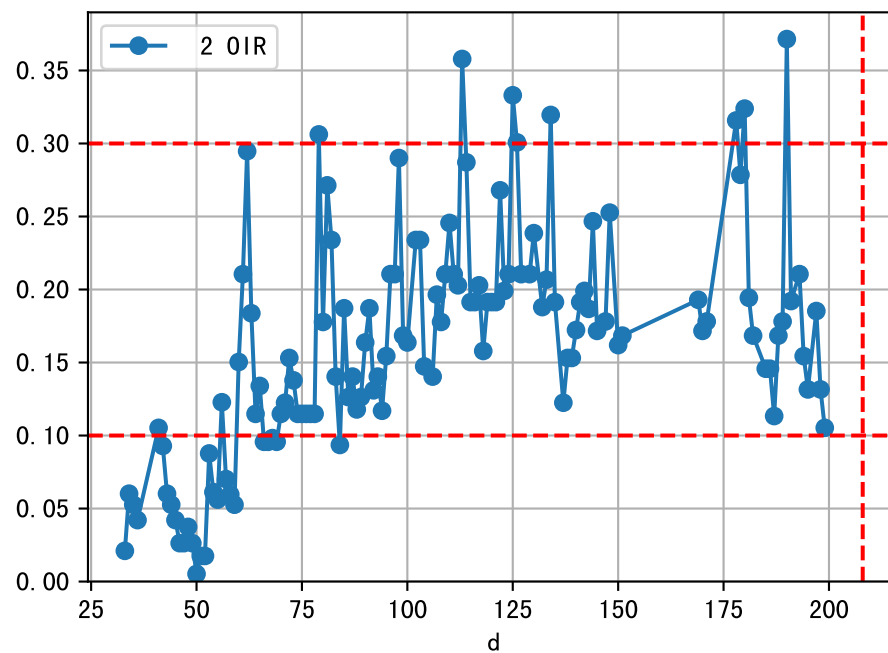
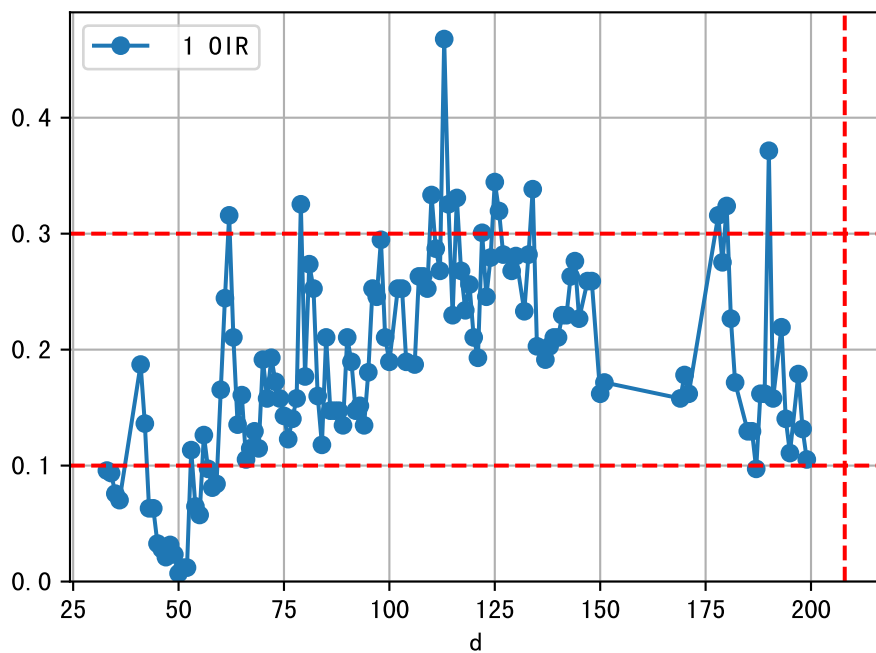
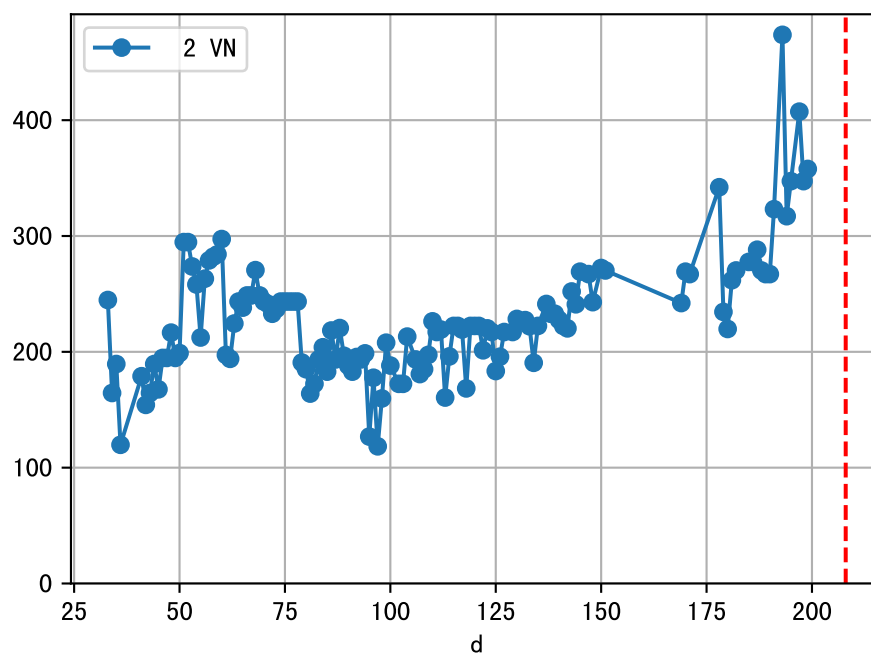
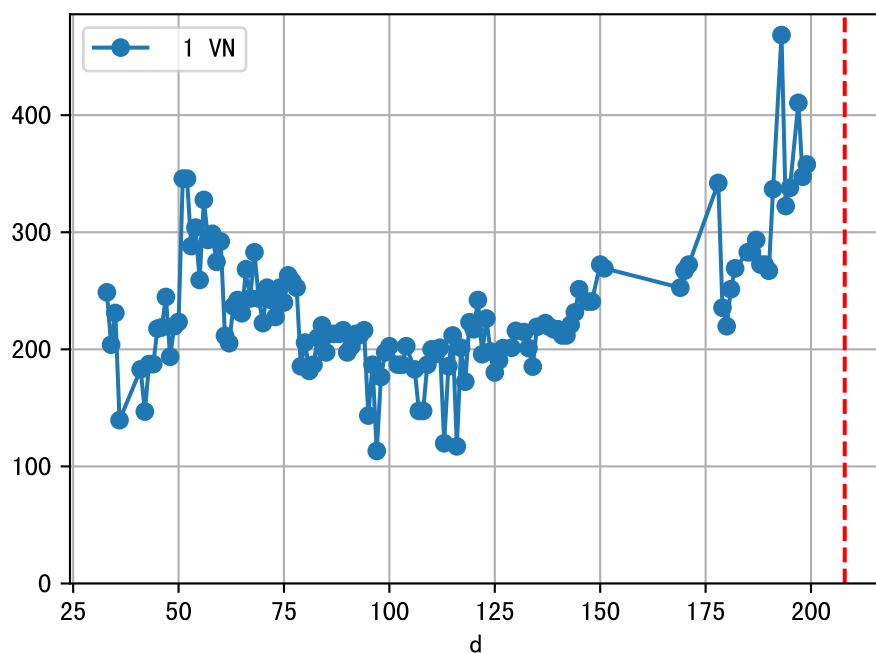
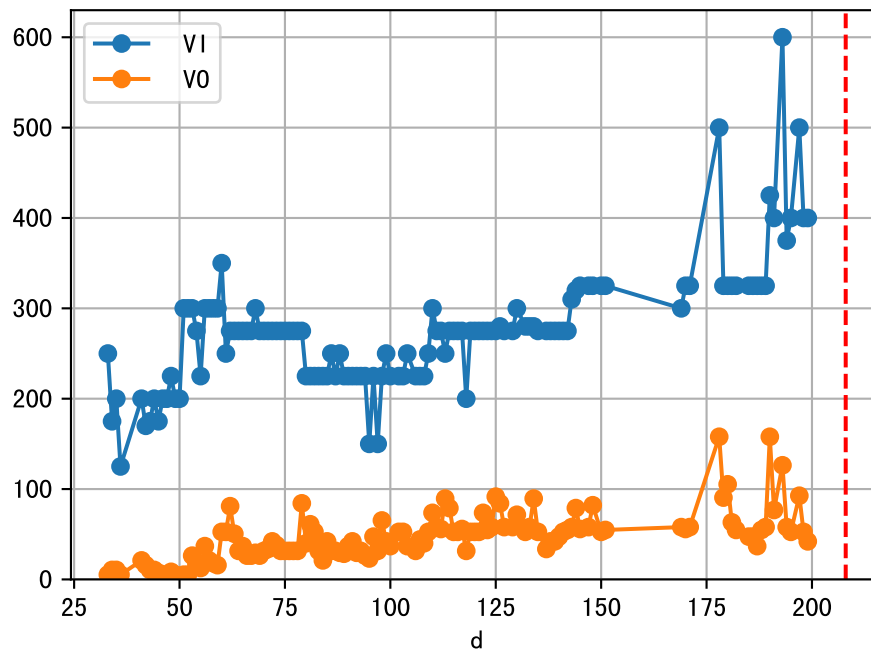


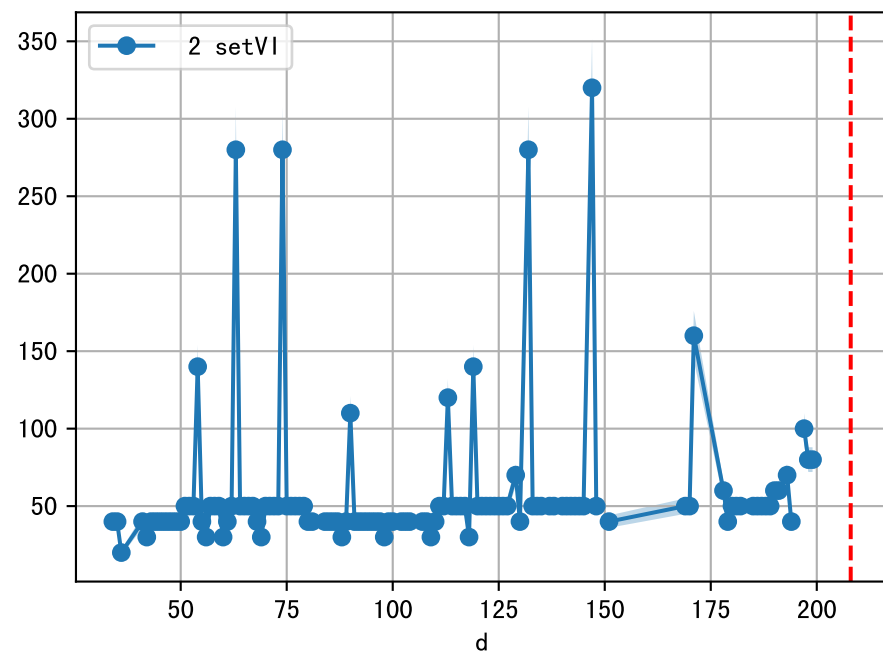
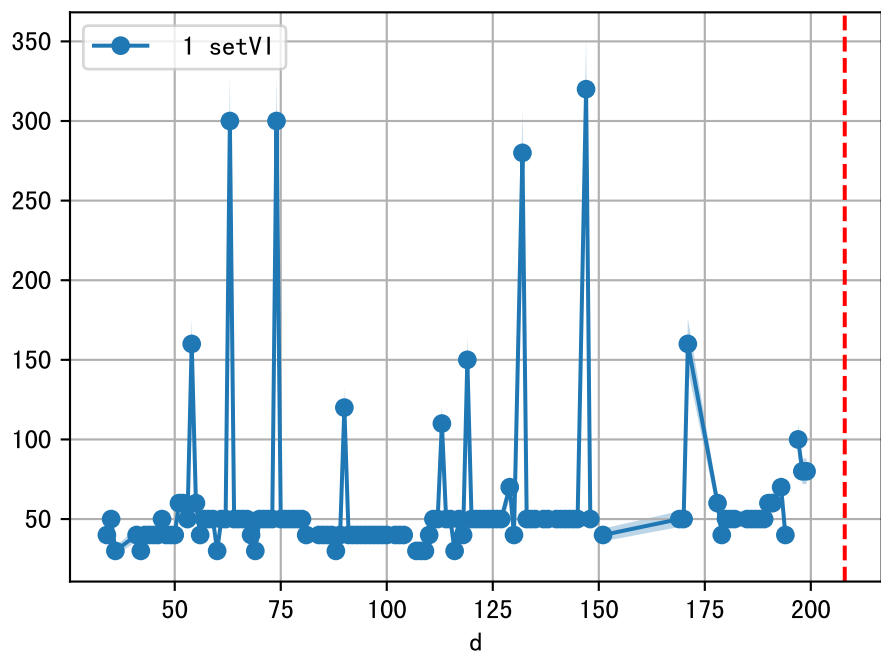
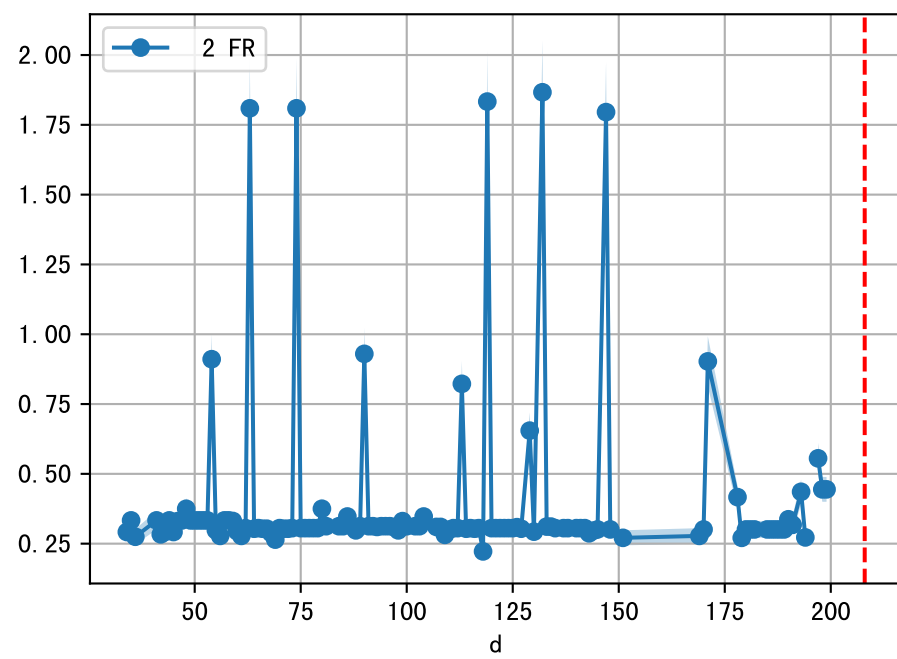
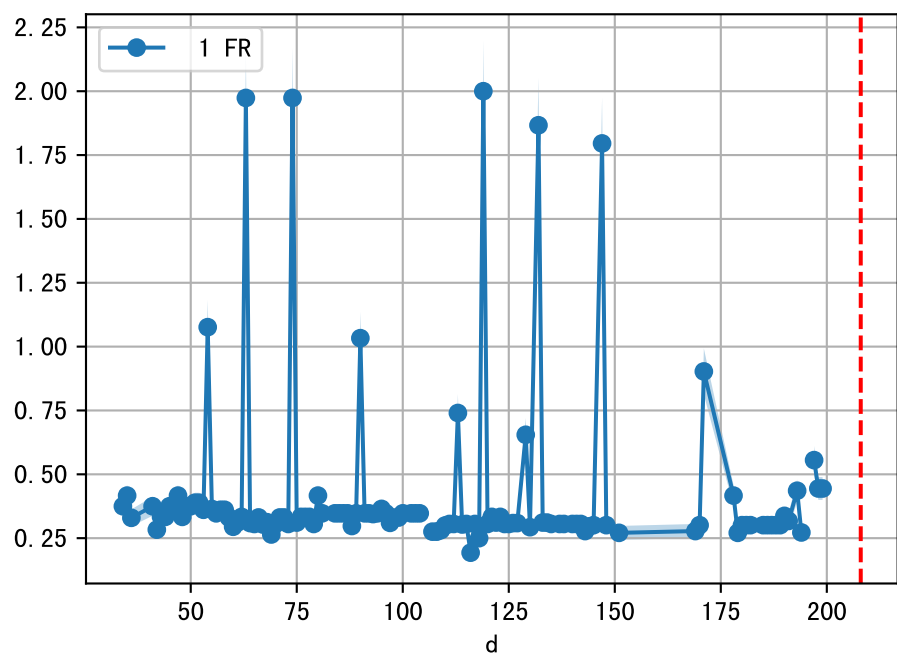
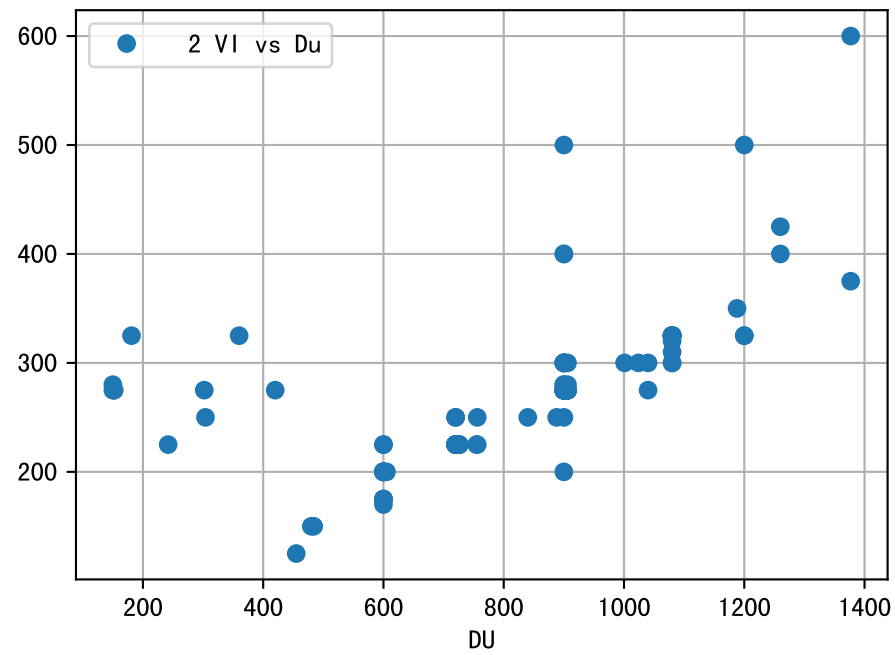
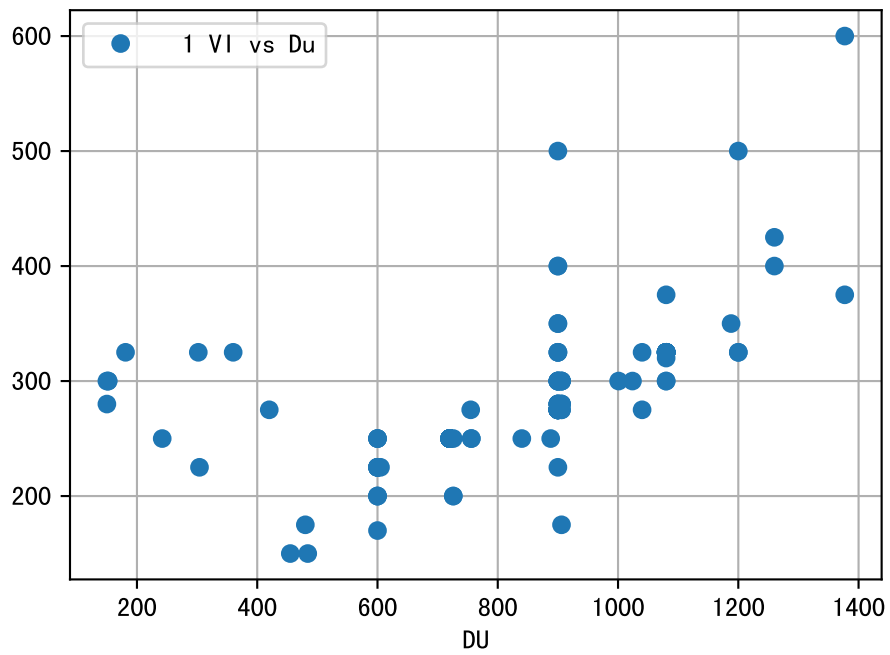
FgArea: [' 0']
SS40 XX11
2026-04-02 (Day 208)

fgNum 1 (at_row = 2)

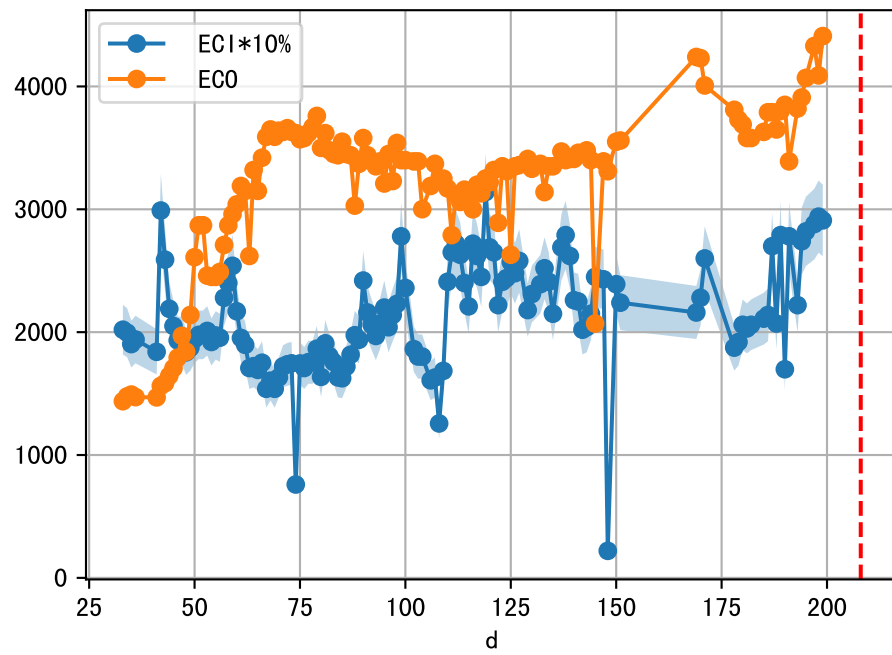


fgNum 2 (at_row = 47)

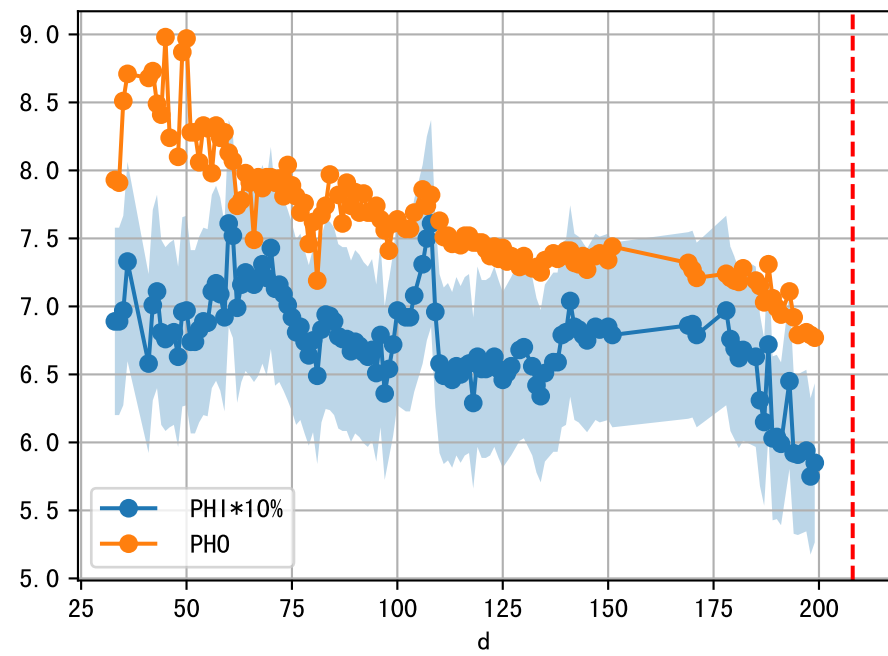
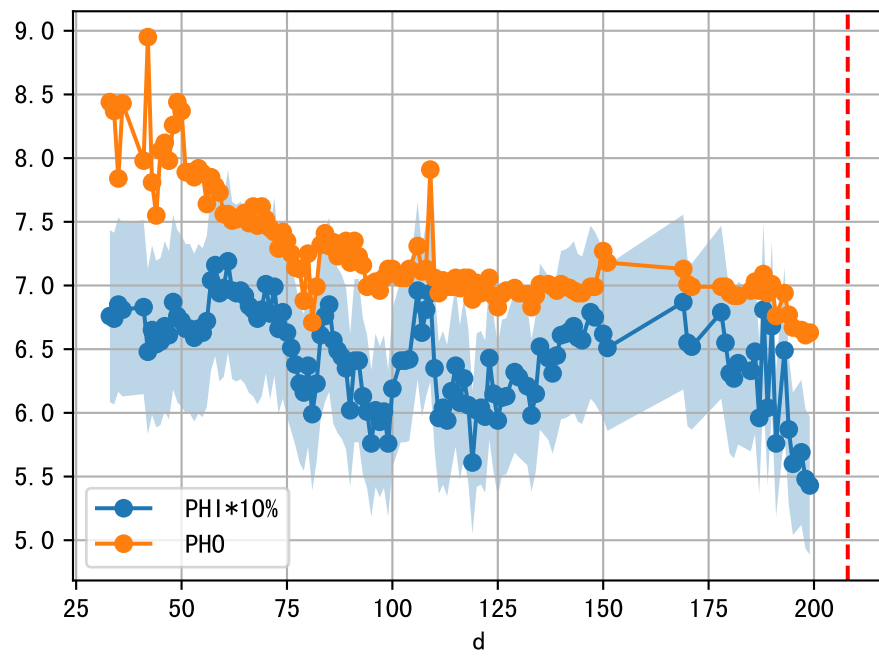
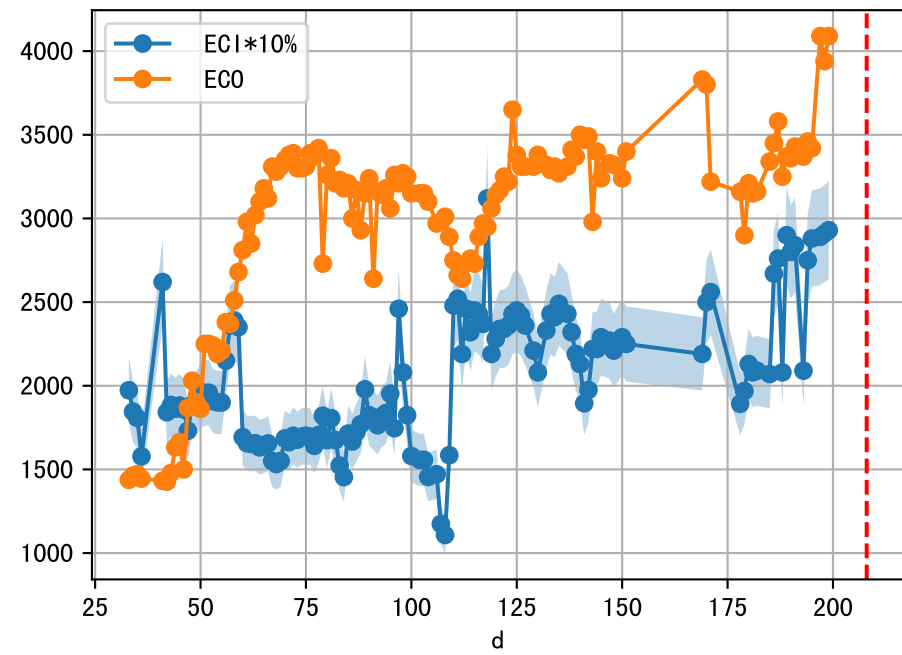




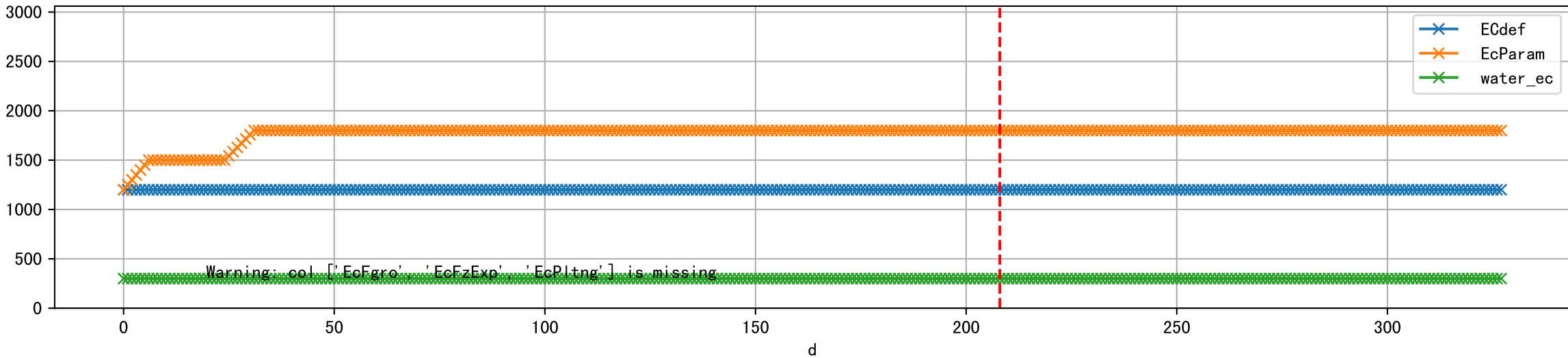
1 (fgArea = NA)



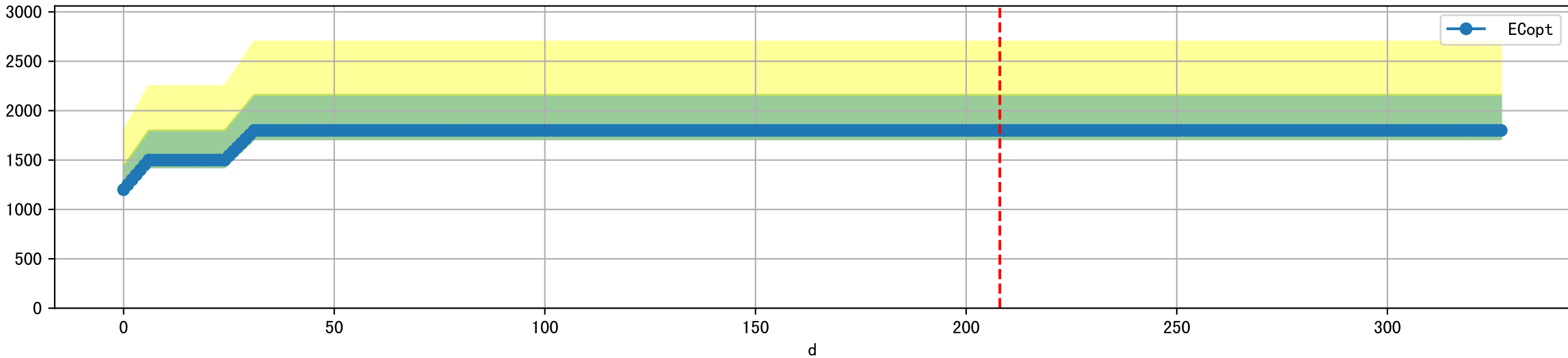
2 (fgArea = NA)



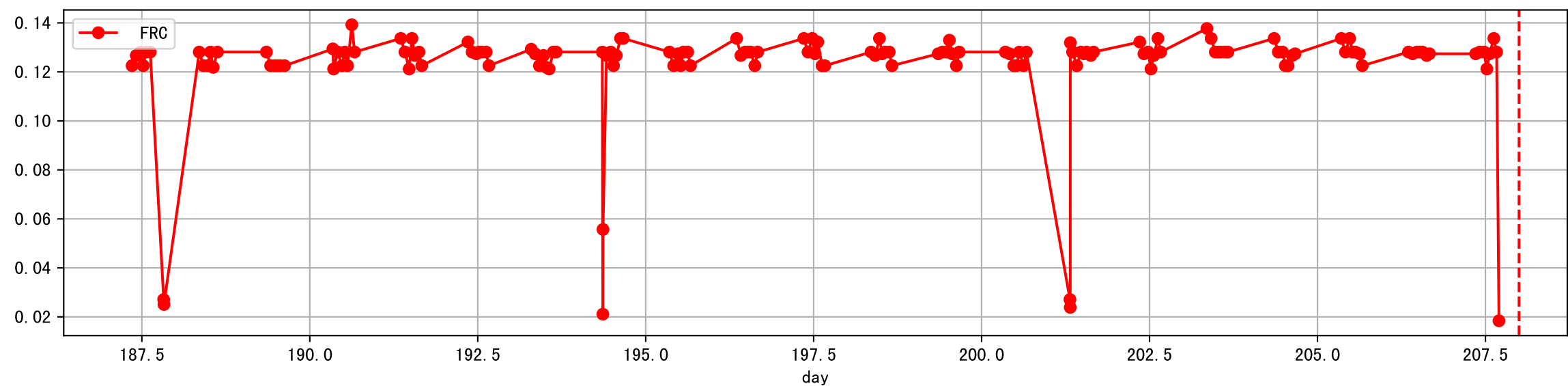
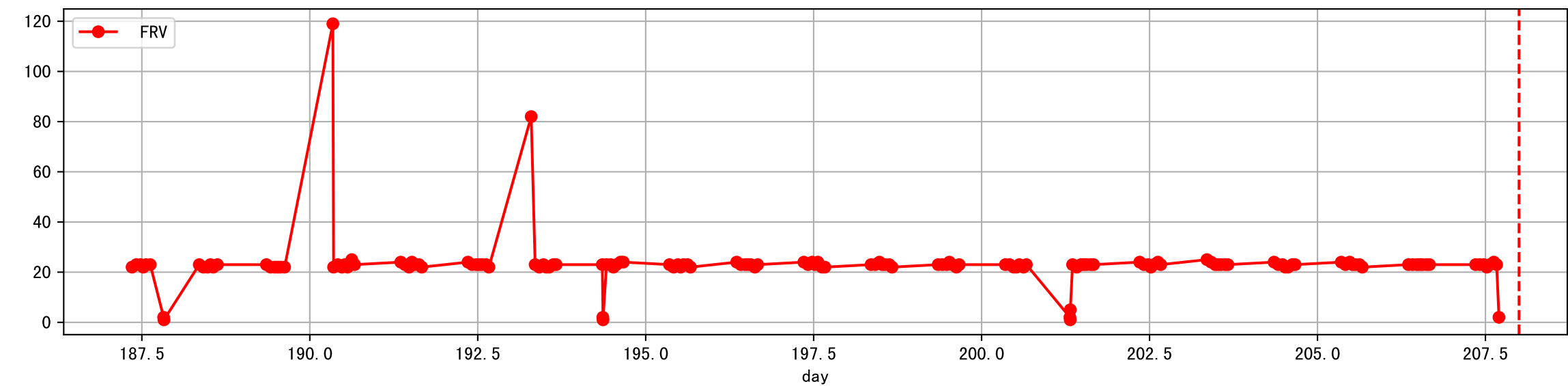
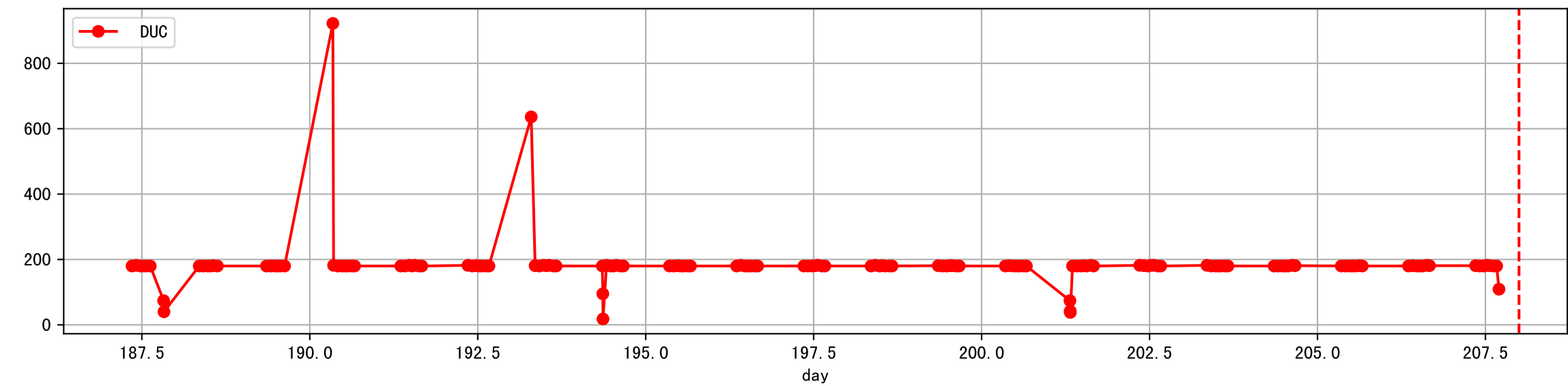
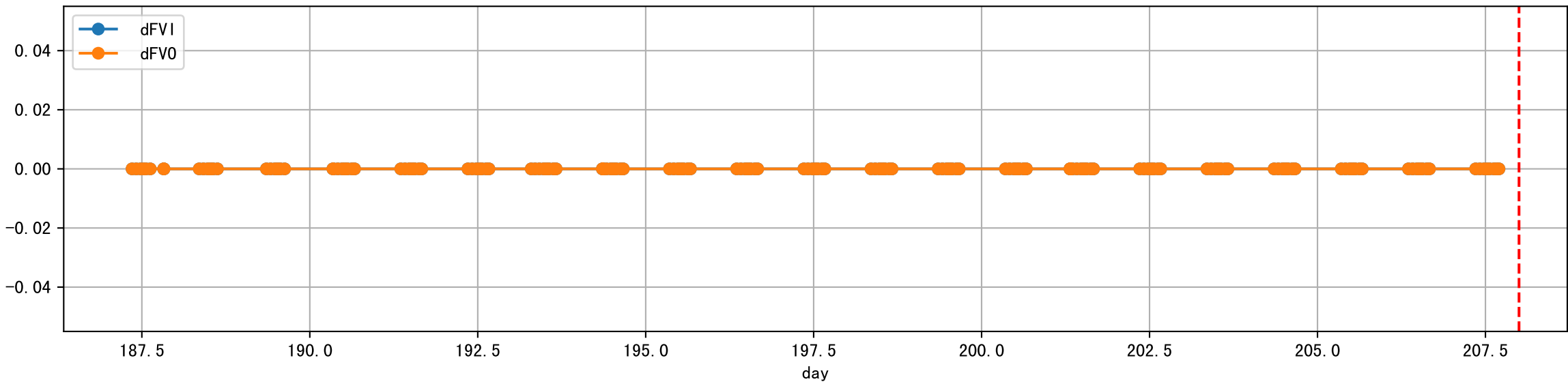
Plot [['EcFgro', 'EcFzExp', 'EcPltng', 'ECdef', 'EcParam', 'water_ec']]



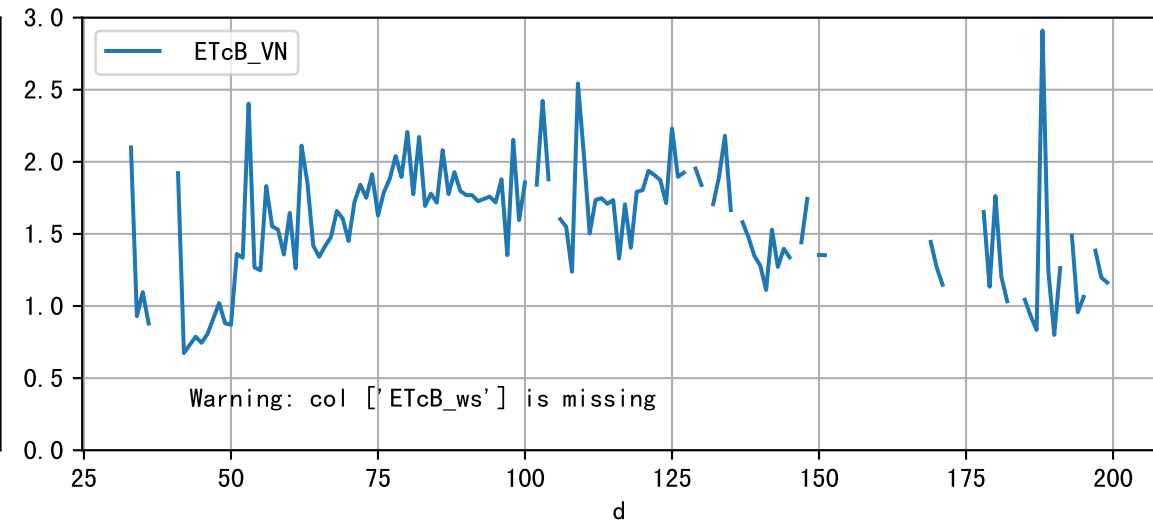
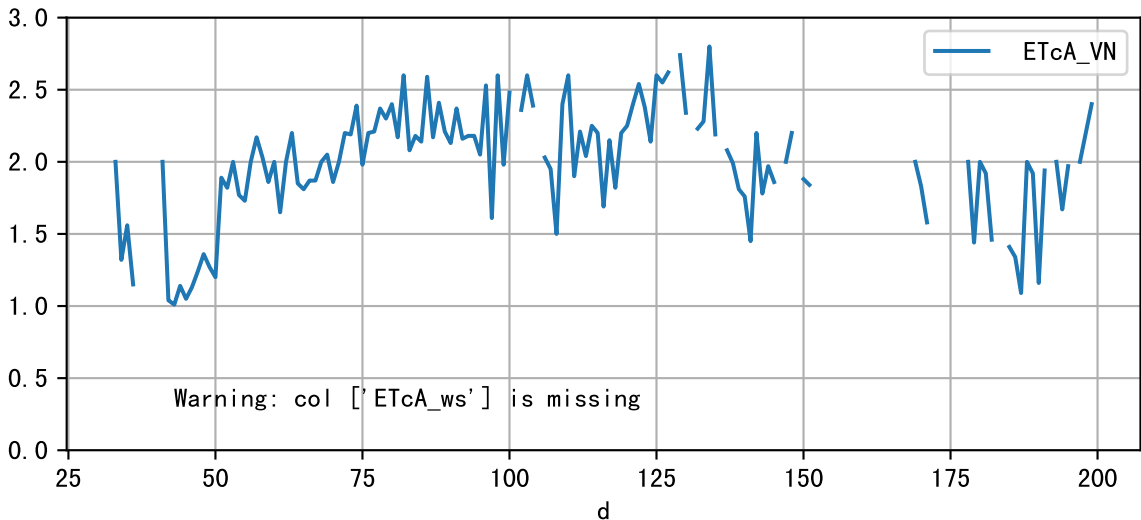
Plot [' ECopt']



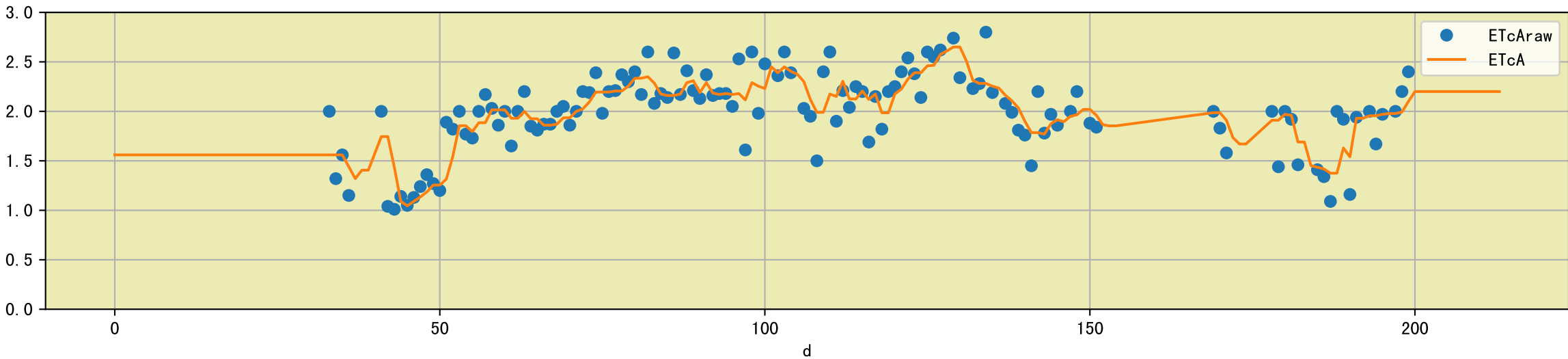
Plot Sensor and FgRec Data



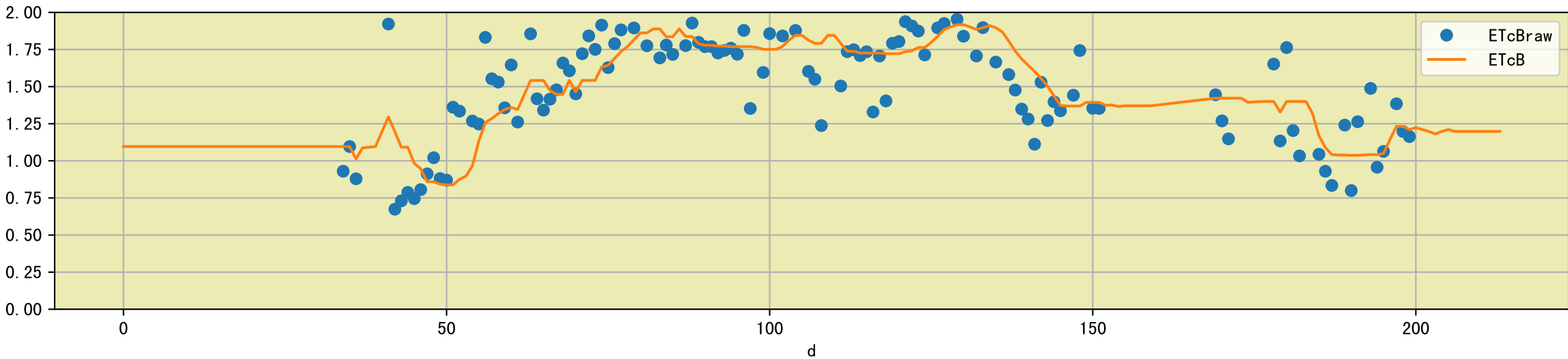
Plot [['ETcA_VN', 'ETcA_ws'], ['ETcB_VN', 'ETcB_ws']]

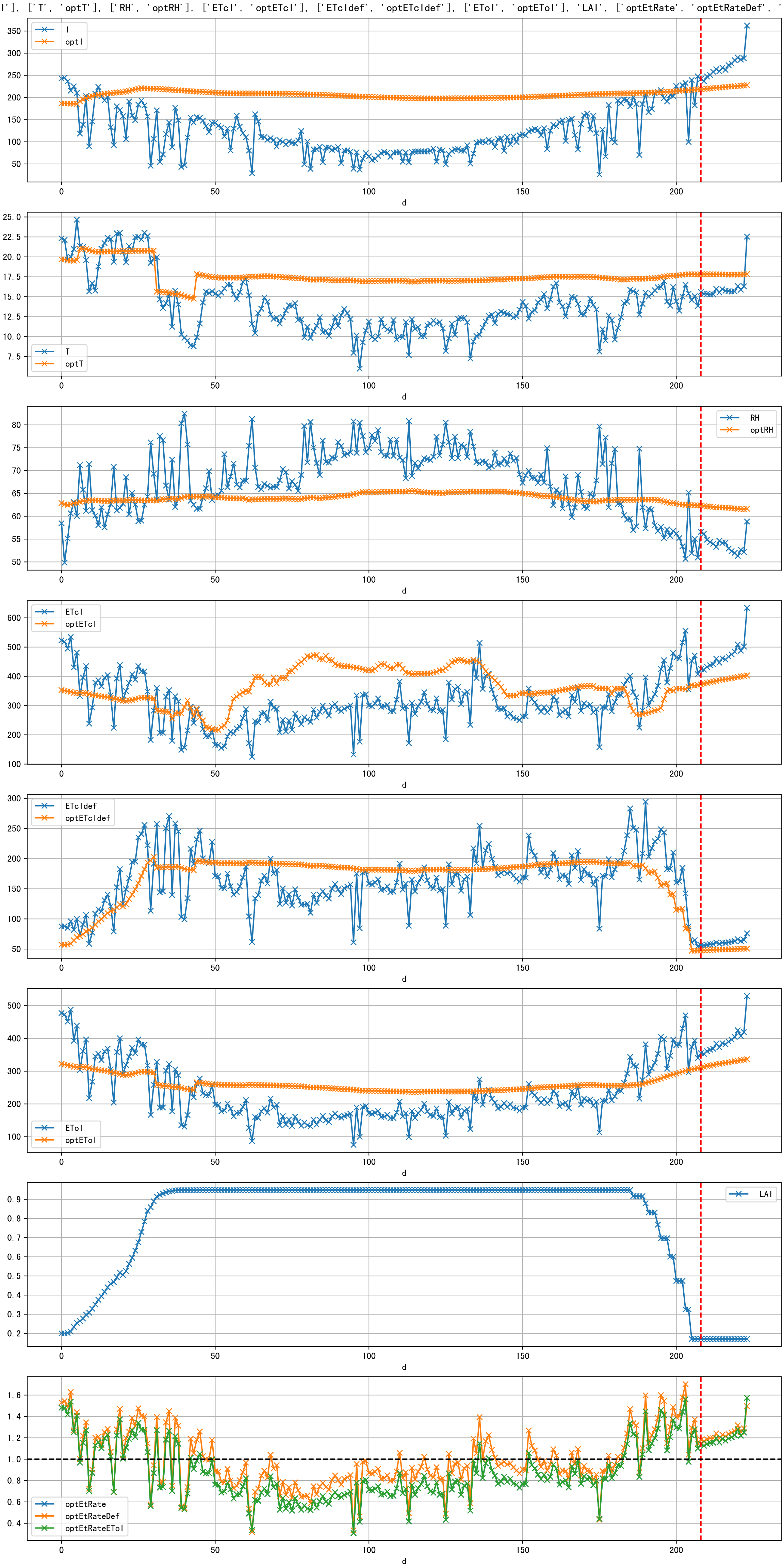


Plot [['ETcAraw:o', 'ETcA']]

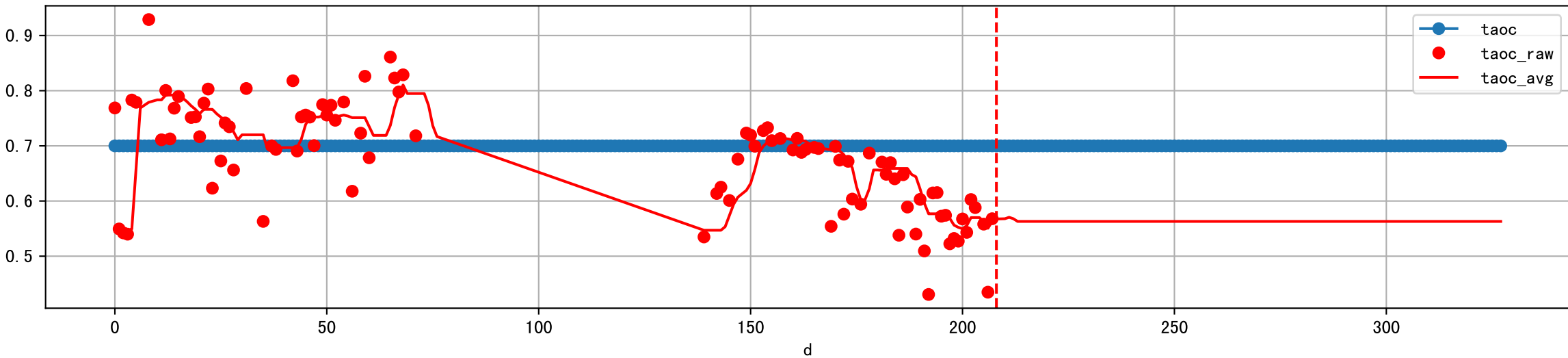


Plot [['ETcBraw:o', 'ETcB']]

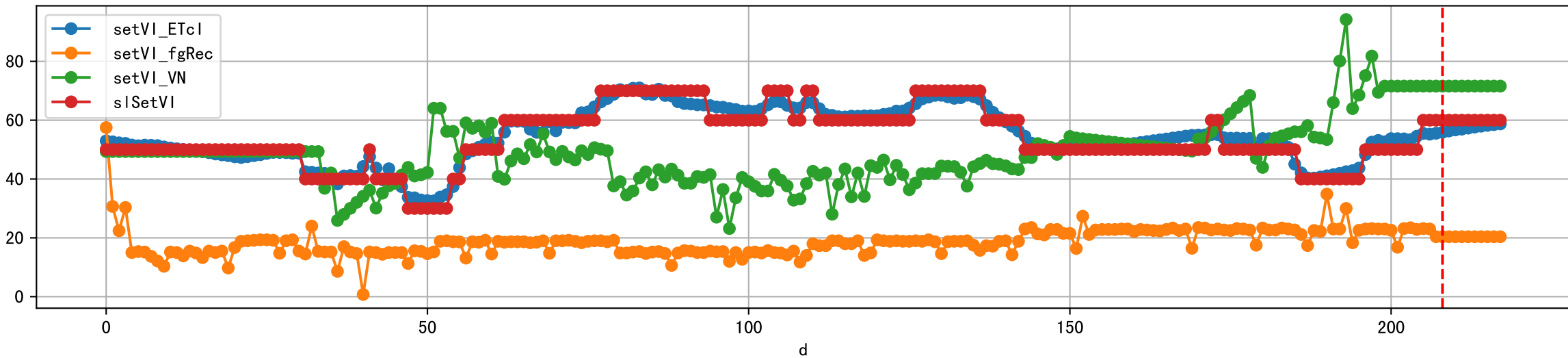




Plot [['taoc', 'taoc_raw:ro', 'taoc_avg:r-']]

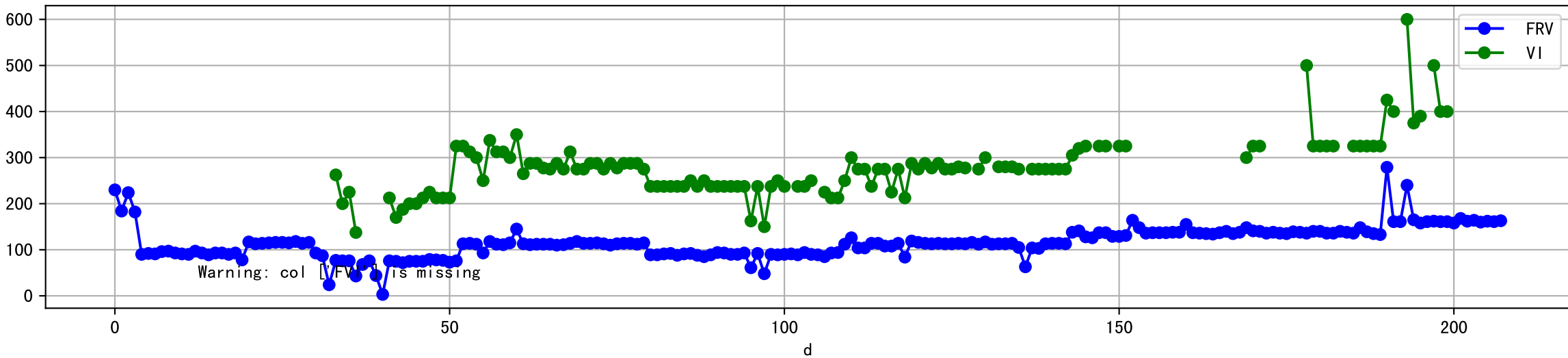


Plot [['setVI_ETcI', 'setVI_fgRec', 'setVI_VN', 'sISetVI']]

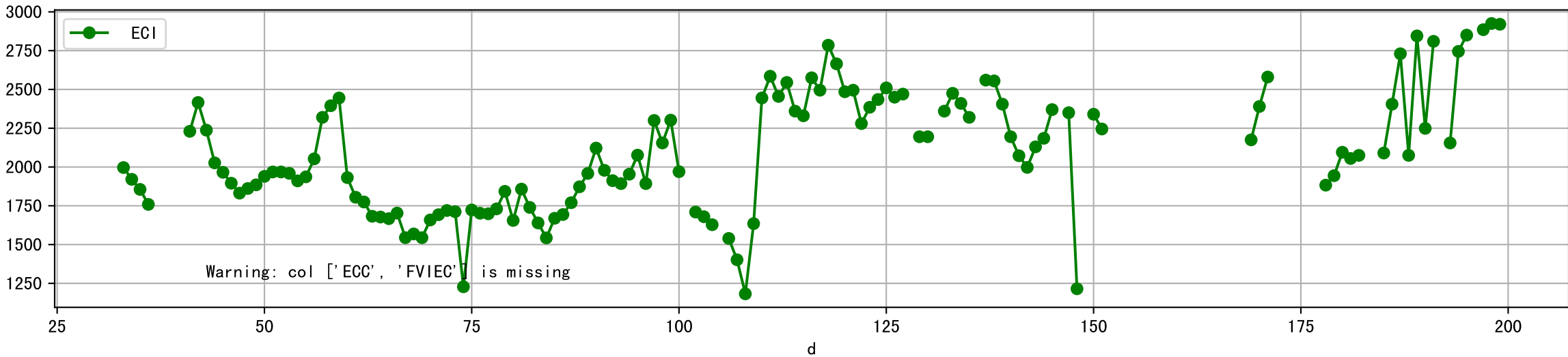




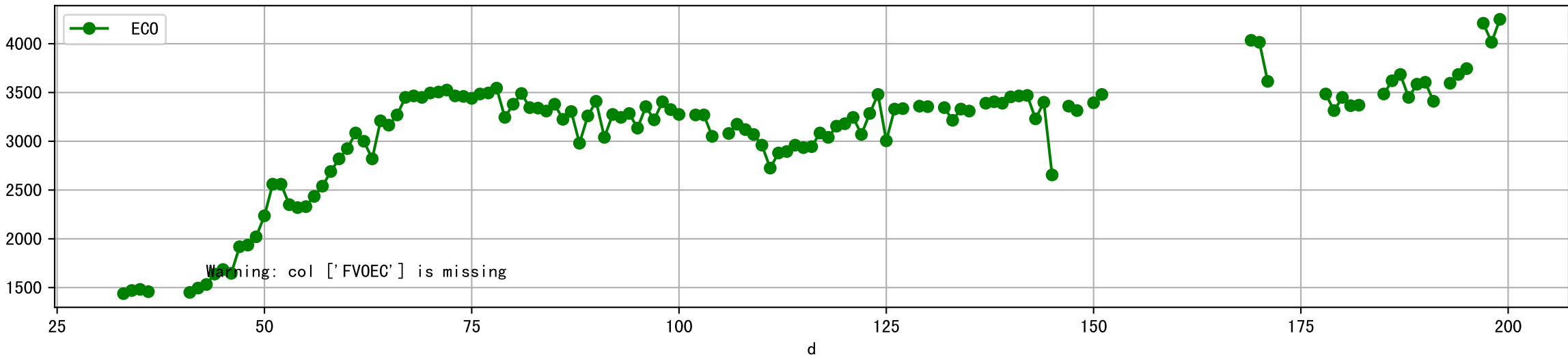
Plot [['FRV:b-o', 'FVI:r-o', 'VI:g-o']]



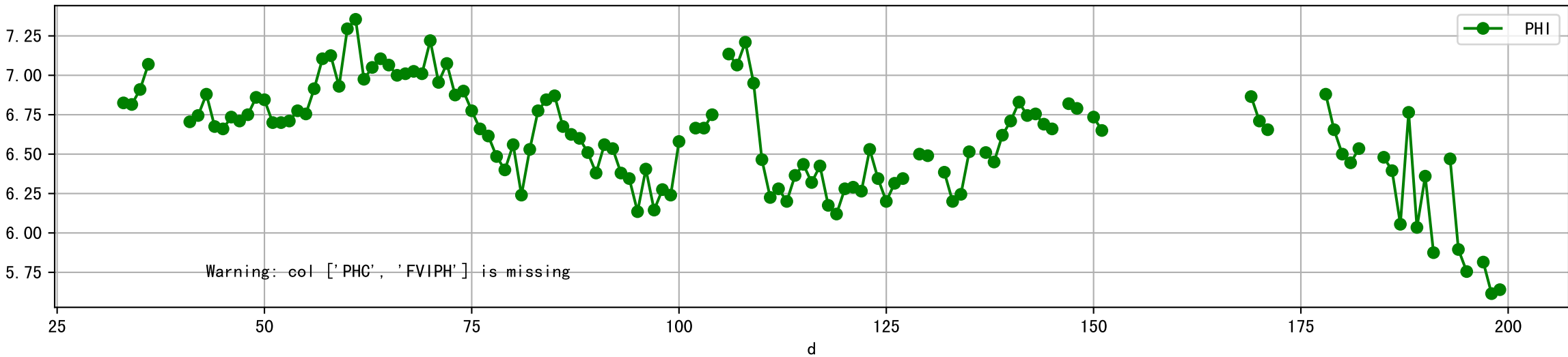
Plot [['ECC:b-o', 'FVIEC:r-o', 'ECI:g-o']]



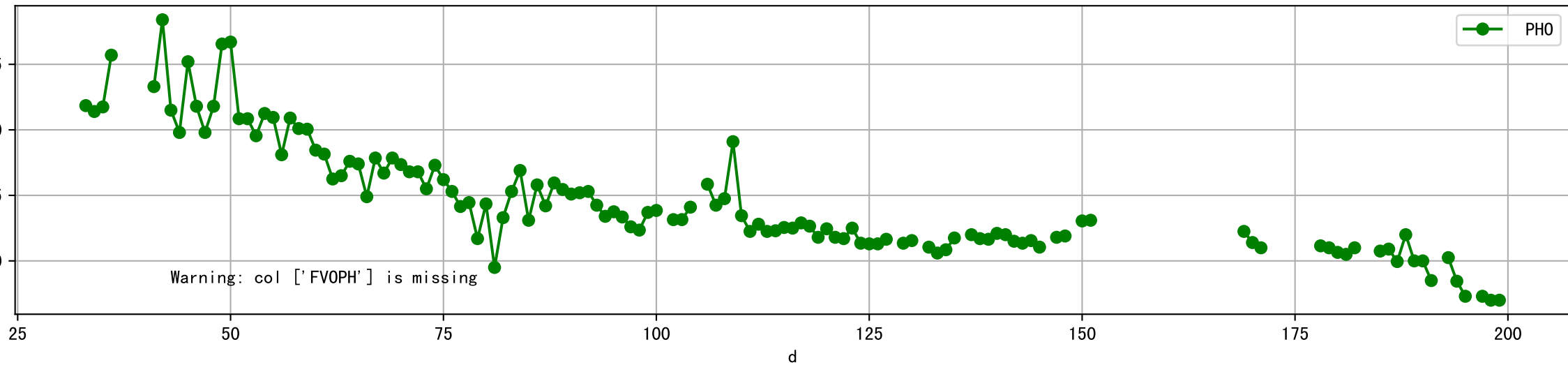
Plot [[' FVOEC:r-o' , ' ECO:g-o']]



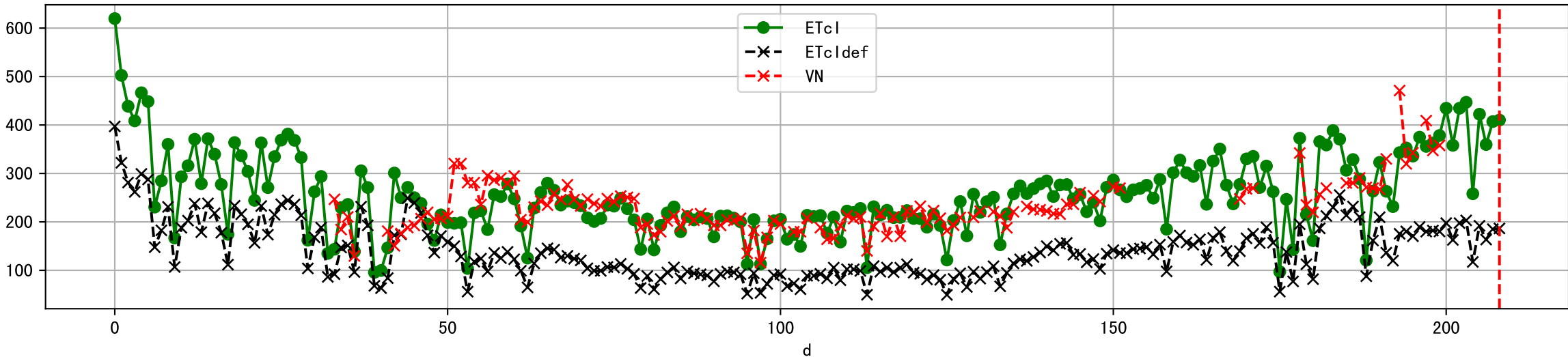
Plot [['PHC:b-o', 'FVIPH:r-o', 'PHI:g-o']]



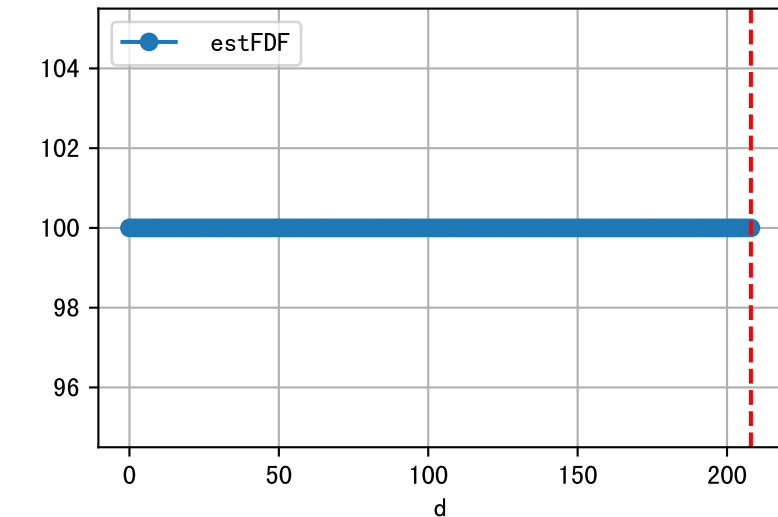
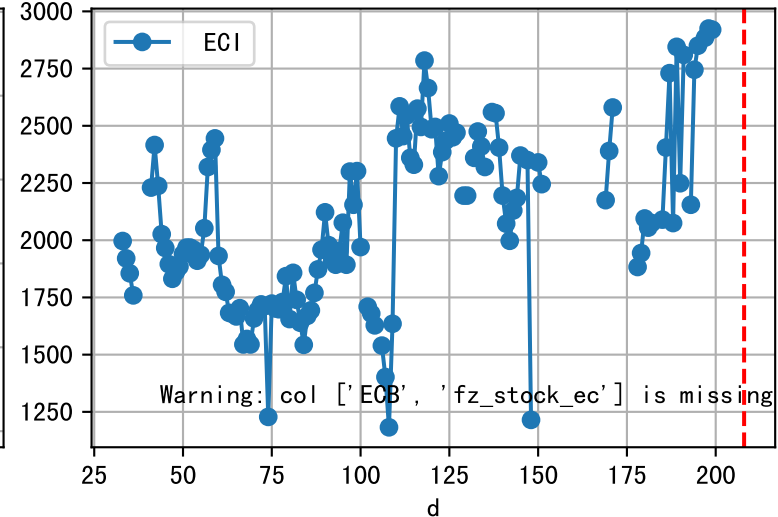
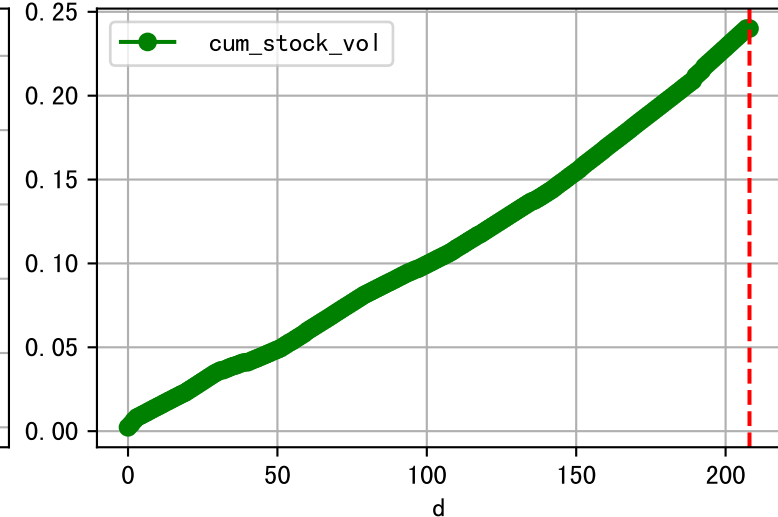
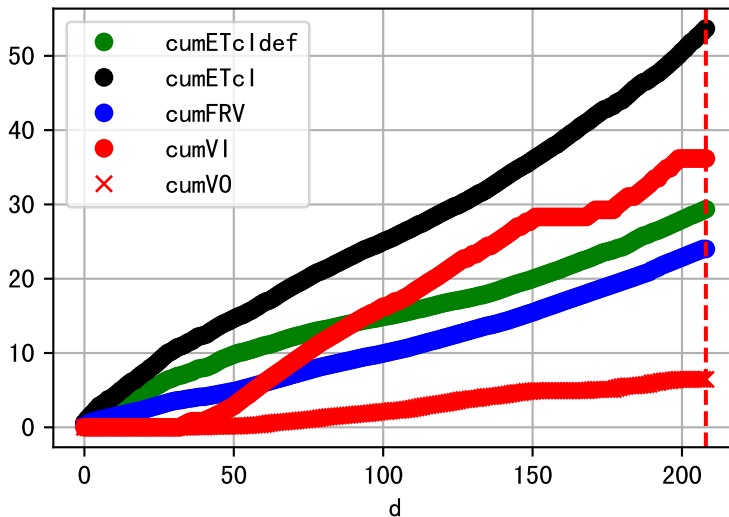
Plot [[' FVOPH:r-o' , ' PHO:g-o']]



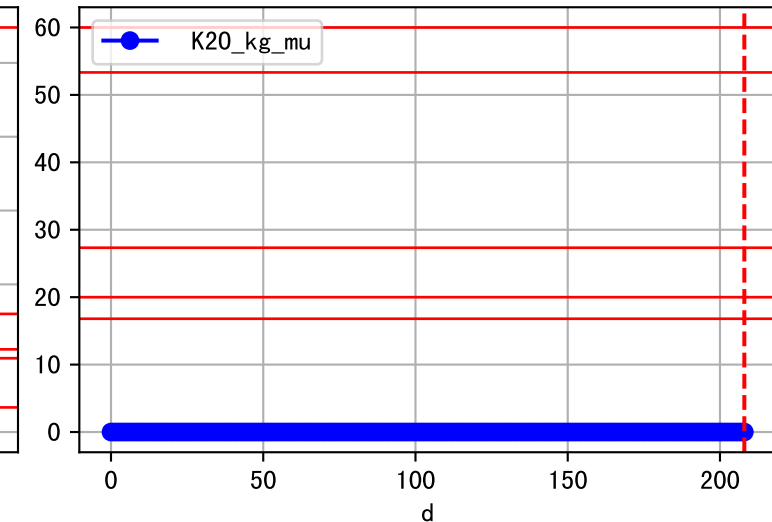
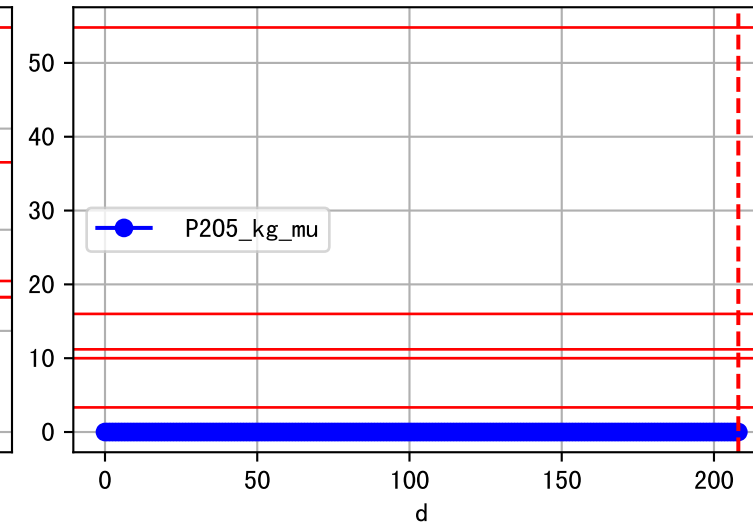
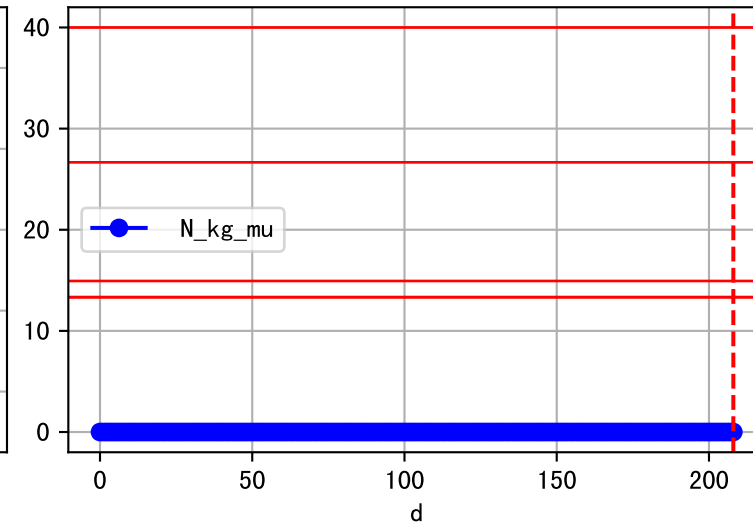
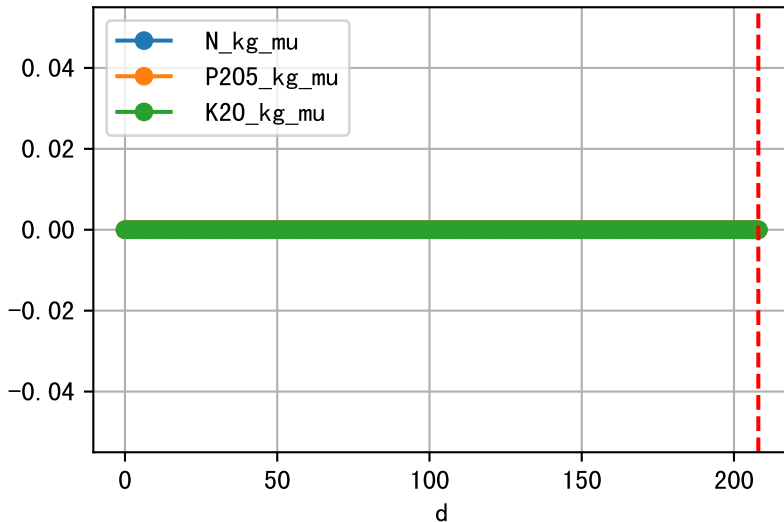
Plot ET/VN



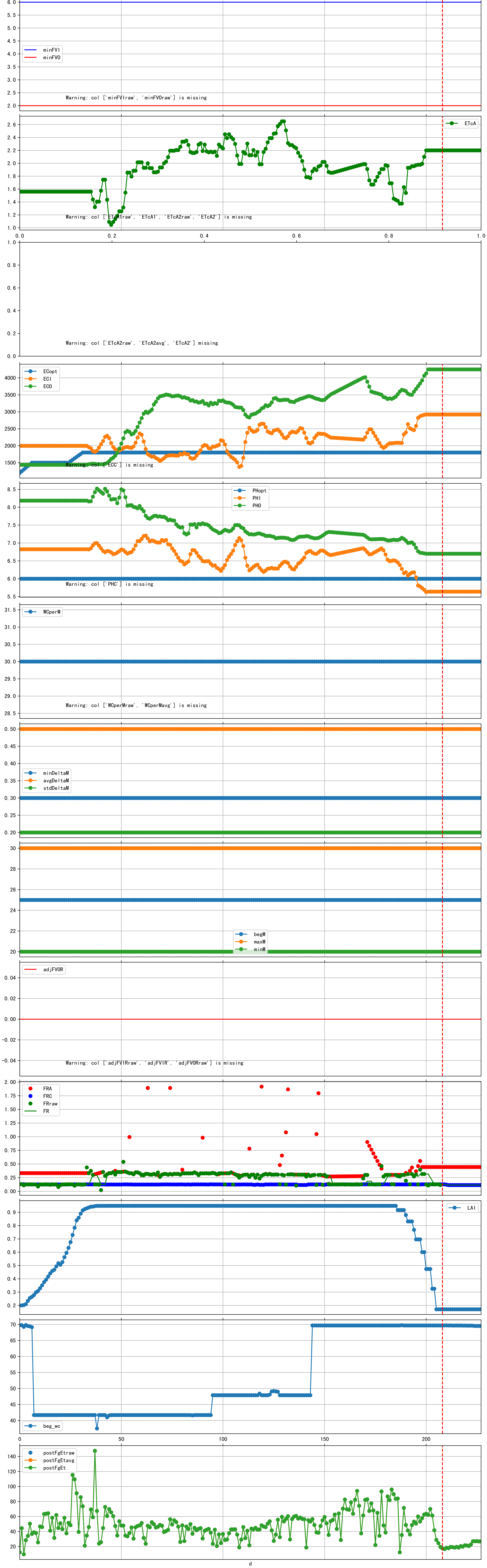
Plot Fv and fertilizer usage

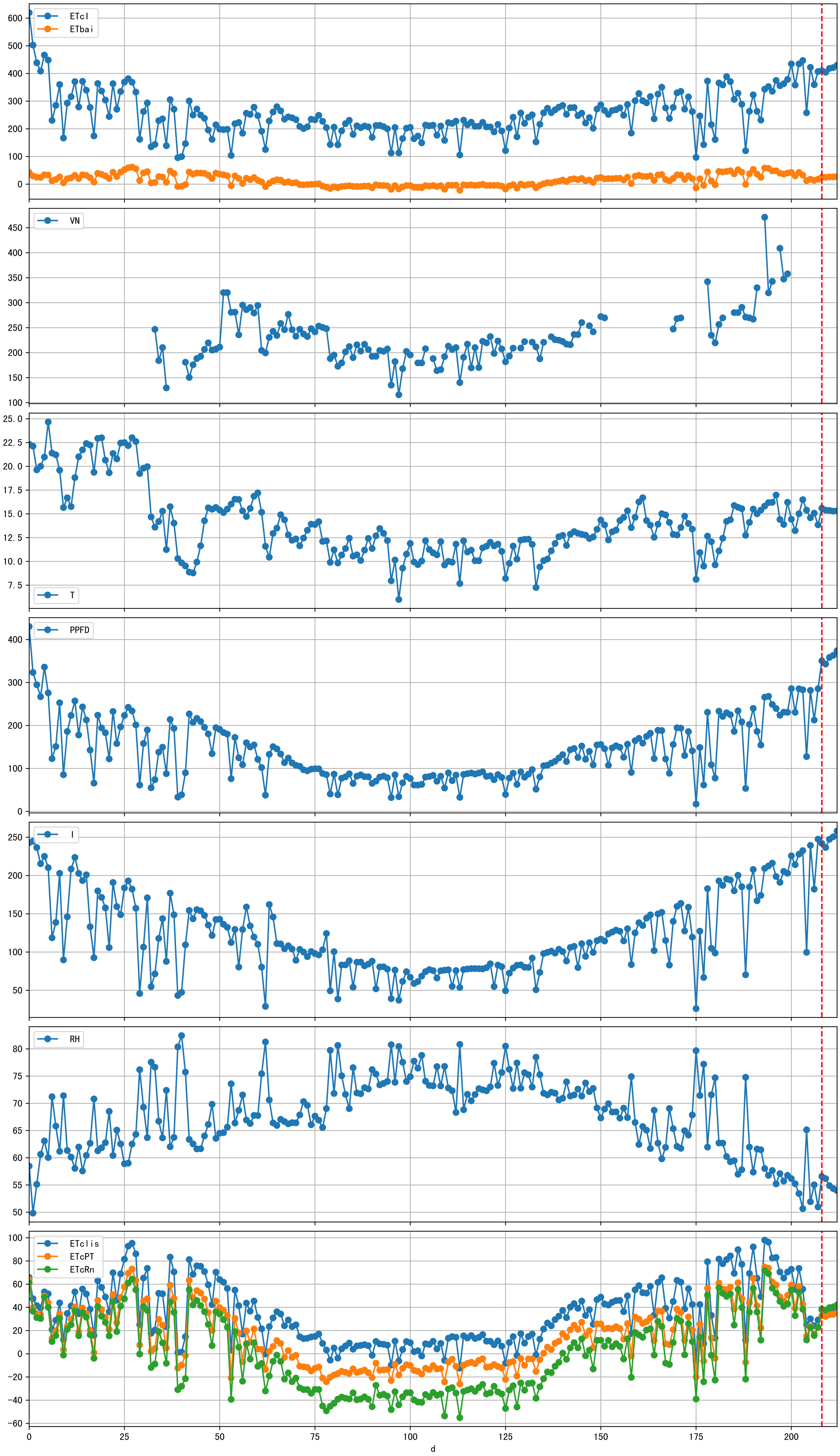


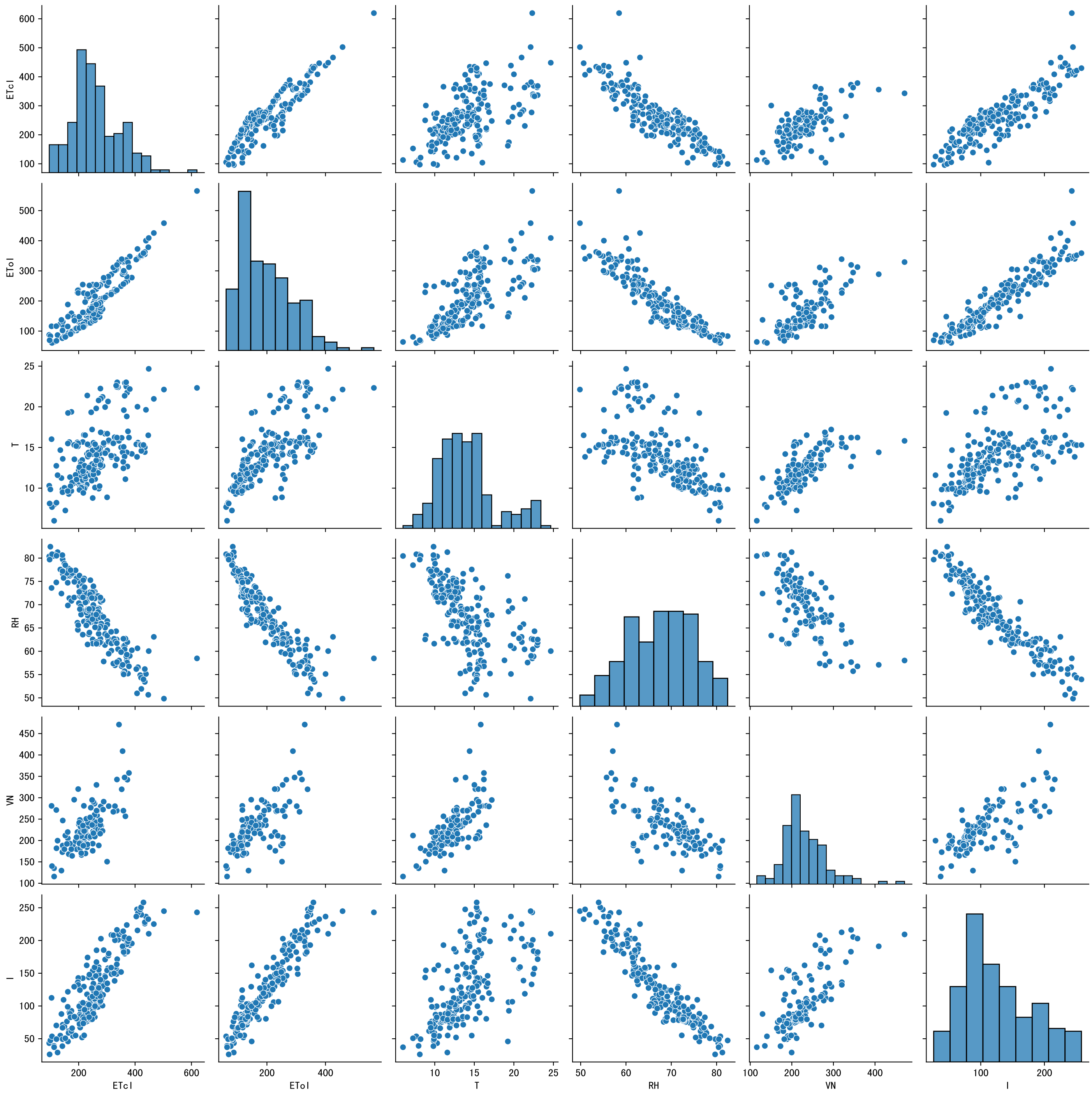
Fertilizer Range Source: kerleyL, kerleyH, UnivFL, TNAI, Haifa

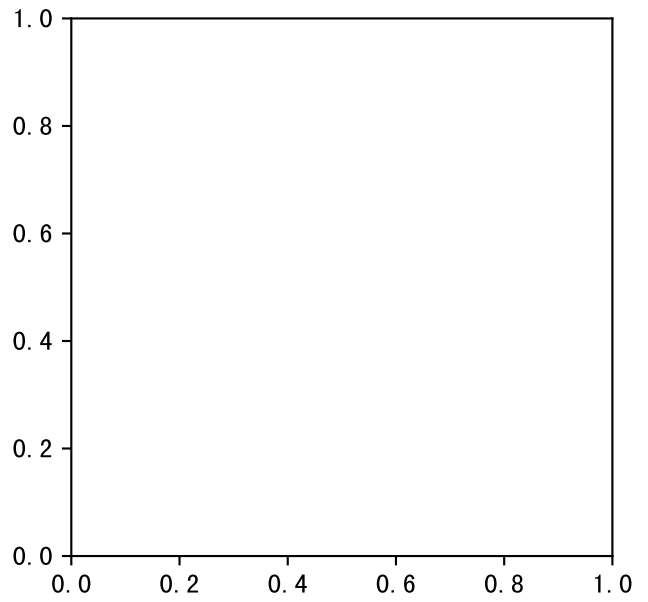
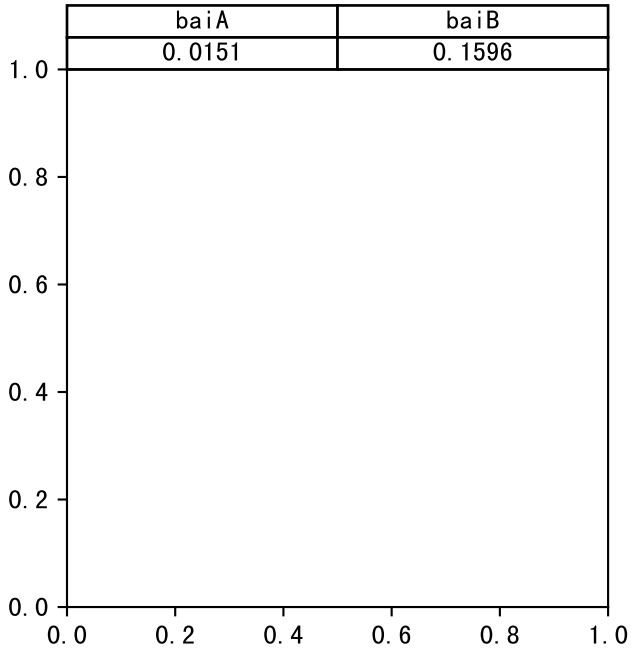
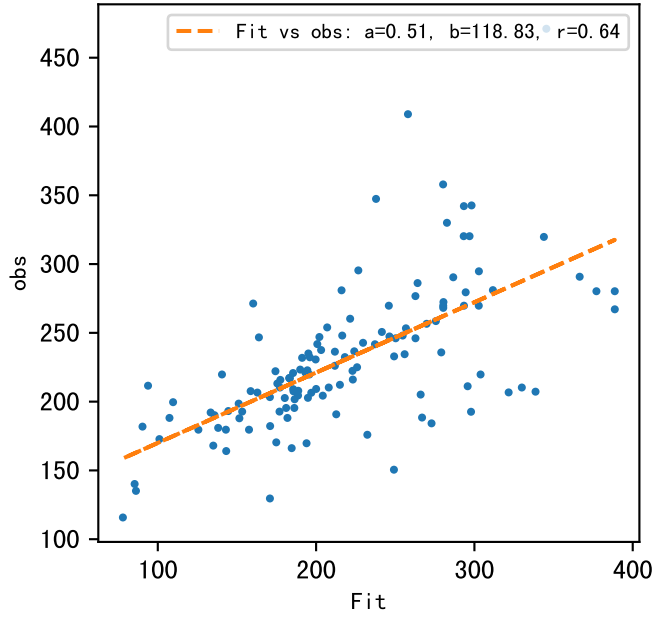
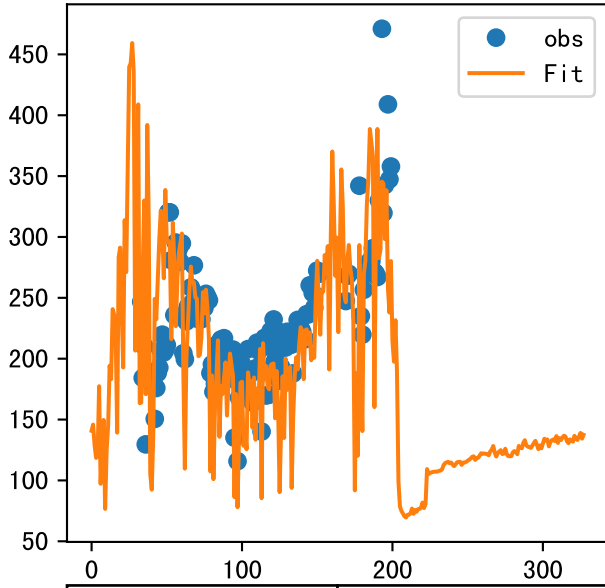


Trend plot forXX11_0

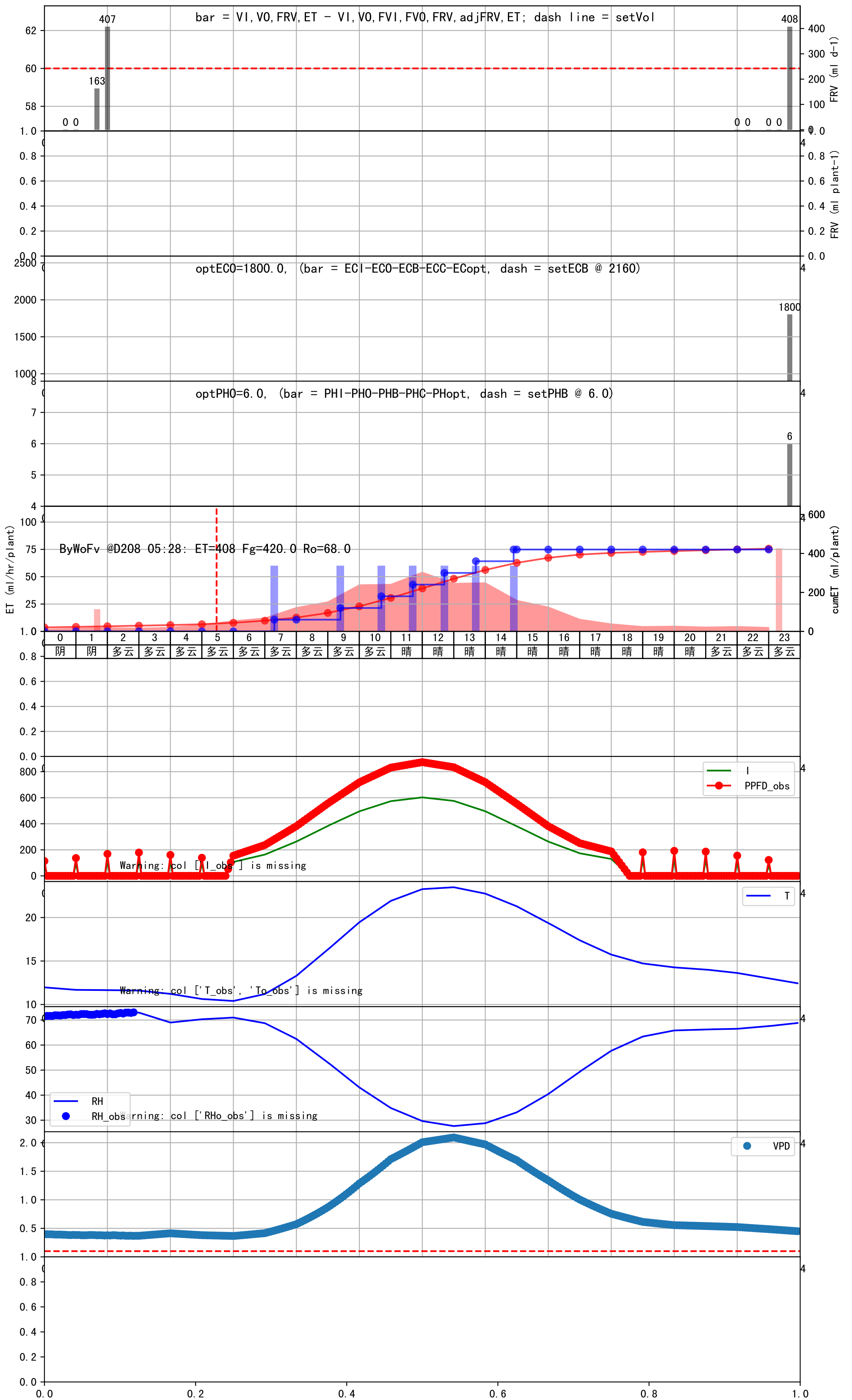








时间	灌溉时长(秒)	灌溉量(毫升/株)	灌溉总量(方/次)	天气	注释
07:20	462	60.0	0.598	多云	预期@07:20 手动 (未用传感器)
09:25	462	60.0	0.598	多云	预期@09:25 手动 (未用传感器)
10:40	462	60.0	0.598	多云	预期@10:40 手动 (未用传感器)
11:40	462	60.0	0.598	晴	预期@11:40 手动 (未用传感器)
12:40	462	60.0	0.598	晴	预期@12:40 手动 (未用传感器)
13:40	462	60.0	0.598	晴	预期@13:40 手动 (未用传感器)
14:55	462	60.0	0.598	晴	预期@14:55 手动 (未用传感器)
总计	3234.0 (7次)	420.0			建议进液EC: 2160, PH: 6.0



时间	灌溉时长(秒)	灌溉量(毫升/株)	灌溉总量(方/次)	天气	注释
07:25	181	60.0	0.598	晴	假设@07:25 手动 (未用传感器)
09:10	181	60.0	0.598	晴	假设@09:10 手动 (未用传感器)
10:20	181	60.0	0.598	晴	假设@10:20 手动 (未用传感器)
11:45	181	60.0	0.598	晴	假设@11:45 手动 (未用传感器)
13:00	181	60.0	0.598	晴	假设@13:00 手动 (未用传感器)
13:50	181	60.0	0.598	晴	假设@13:50 手动 (未用传感器)
14:55	181	60.0	0.598	晴	假设@14:55 手动 (未用传感器)
总计	1267.0 (7次)	420.0			建议进液EC: 2160, PH: 6.0

滴头平均流速偏小 (0.13 vs def 0.5), 请检查

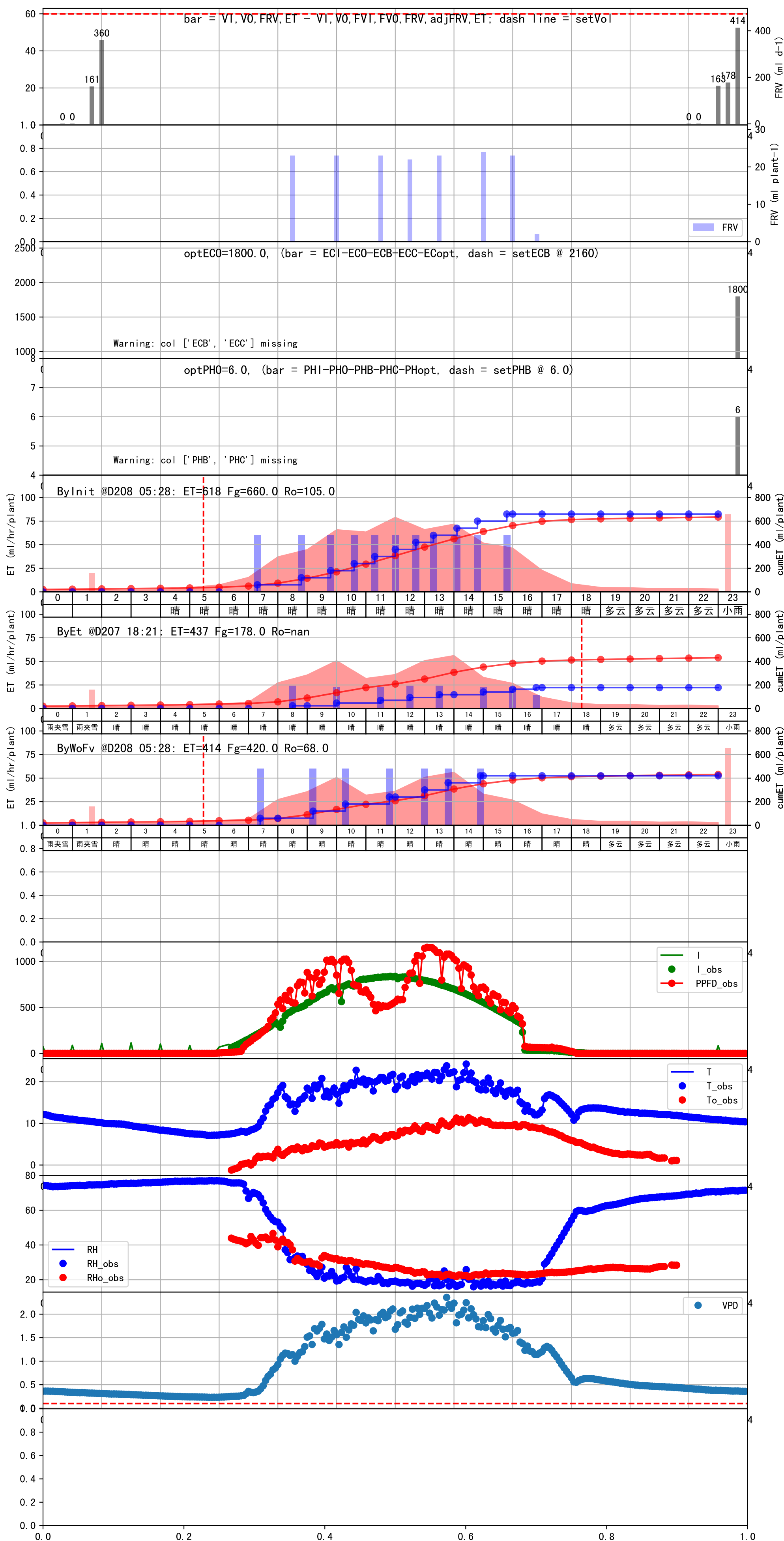
上次灌溉流速比过去5天平均小 (0.02 vs 0.13), 可能管道压力异常或有管道堵塞

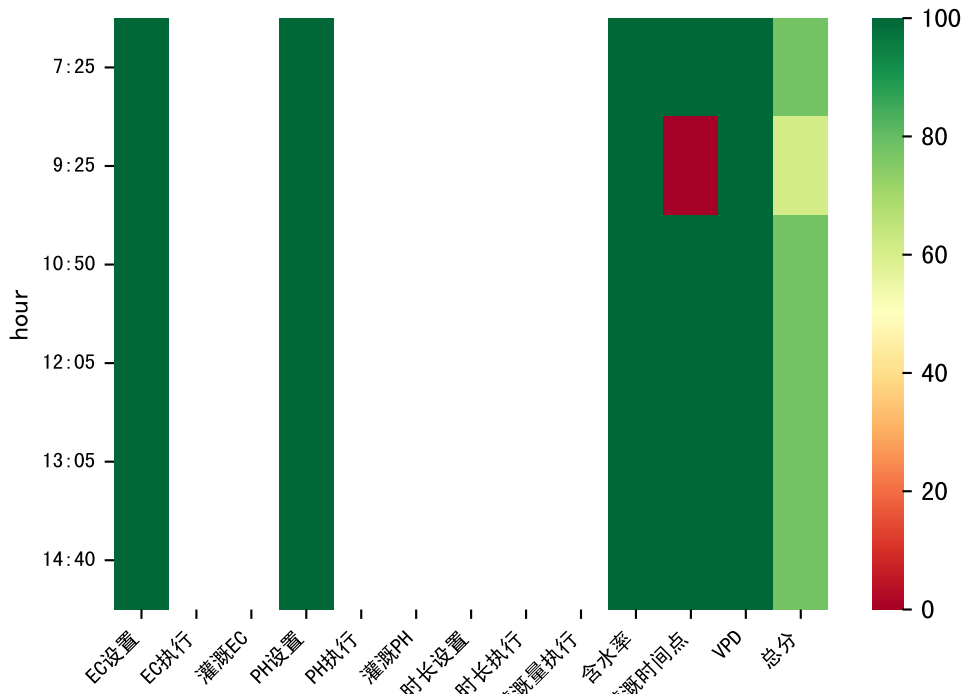
施肥机灌溉量与预期值不符 (2.0 : 14.0), 可能水表需要校准

上次灌溉时长未按模型建议 (109 vs 462.0)

默认实际灌溉14.0 ml.

上次灌溉施肥机流速0.018394610379158908与平均值0.13偏差较大, 请检查。





时间	灌溉时长(秒)	灌溉量(毫升/株)	灌溉总量(方/次)	天气	注释
07:25	180	60.0	0.598	晴	假设@07:25 手动 (未用传感器)
09:25	180	60.0	0.598	晴	假设@09:25 手动 (未用传感器)
10:50	180	60.0	0.598	晴	假设@10:50 手动 (未用传感器)
12:05	180	60.0	0.598	晴	假设@12:05 手动 (未用传感器)
13:05	180	60.0	0.598	晴	假设@13:05 手动 (未用传感器)
14:40	180	60.0	0.598	晴	假设@14:40 手动 (未用传感器)
总计	1080.0 (6次)	360.0			建议进液EC: 2160, PH: 6.0

滴头平均流速偏小 (0.13 vs def 0.5), 请检查
上次灌溉时长未按模型建议 (181 vs 462.0)
默认实际灌溉24.0 ml.

时间	灌溉时长(秒)	灌溉量(毫升/株)	灌溉总量(方/次)	天气	注释
07:25	180	50.0	0.499	晴	假设@07:25 手动 (未用传感器)
09:00	180	50.0	0.499	晴	假设@09:00 手动 (未用传感器)
09:55	180	50.0	0.499	晴	假设@09:55 手动 (未用传感器)
10:55	180	50.0	0.499	晴	假设@10:55 手动 (未用传感器)
12:10	180	50.0	0.499	晴	假设@12:10 手动 (未用传感器)
12:55	180	50.0	0.499	晴	假设@12:55 手动 (未用传感器)
13:40	180	50.0	0.499	晴	假设@13:40 手动 (未用传感器)
14:25	180	50.0	0.499	晴	假设@14:25 手动 (未用传感器)
15:25	180	50.0	0.499	晴	假设@15:25 手动 (未用传感器)
总计	1620.0 (9次)	450.0			建议进液EC: 2160, PH: 6.0

滴头平均流速偏小 (0.13 vs def 0.5), 请检查
上次灌溉时长未按模型建议 (180 vs 385.0)
默认实际灌溉23.0 ml.

时间	灌溉时长(秒)	灌溉量(毫升/株)	灌溉总量(方/次)	天气	注释
07:30	180	50.0	0.499	小雨	假设@07:30 手动 (未用传感器)
11:10	180	50.0	0.499	阴	假设@11:10 手动 (未用传感器)
13:10	180	50.0	0.499	小雨	假设@13:10 手动 (未用传感器)
14:10	180	50.0	0.499	小雨	假设@14:10 手动 (未用传感器)
15:15	180	50.0	0.499	多云	假设@15:15 手动 (未用传感器)
总计	900.0 (5次)	250.0			建议进液EC: 2160, PH: 6.0

滴头平均流速偏小 (0.13 vs def 0.5), 请检查
 施肥机灌溉量与预期值不符 (23.0 : 34.0), 可能水表需要校准
 上次灌溉时长未按模型建议 (181 vs 263.0)
 默认实际灌溉34.0 ml.

