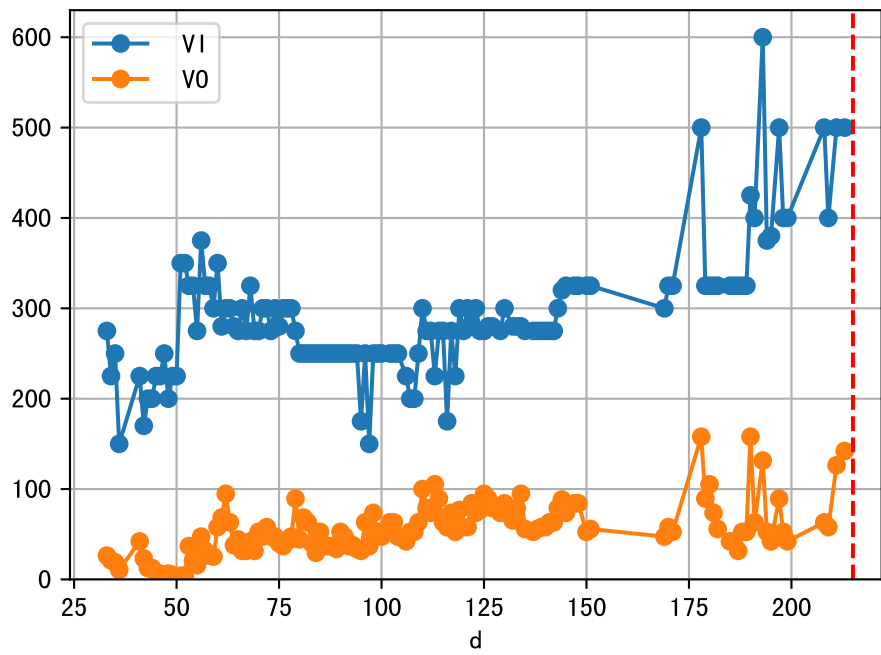
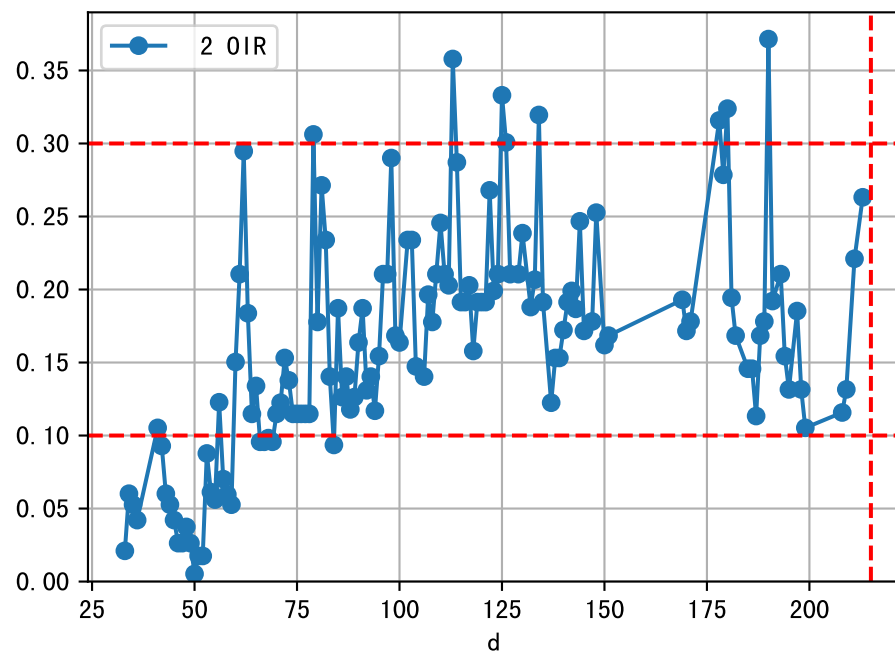
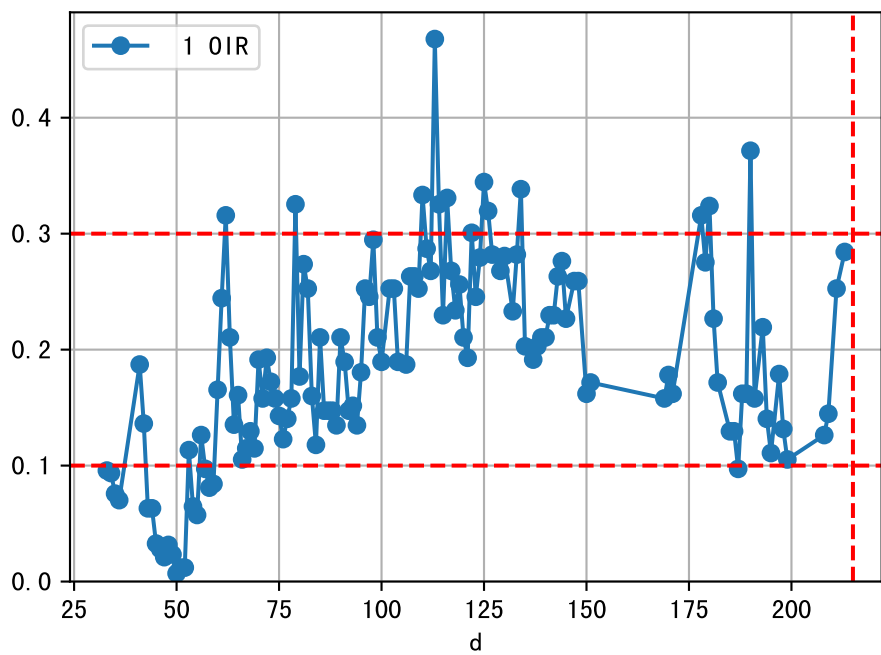
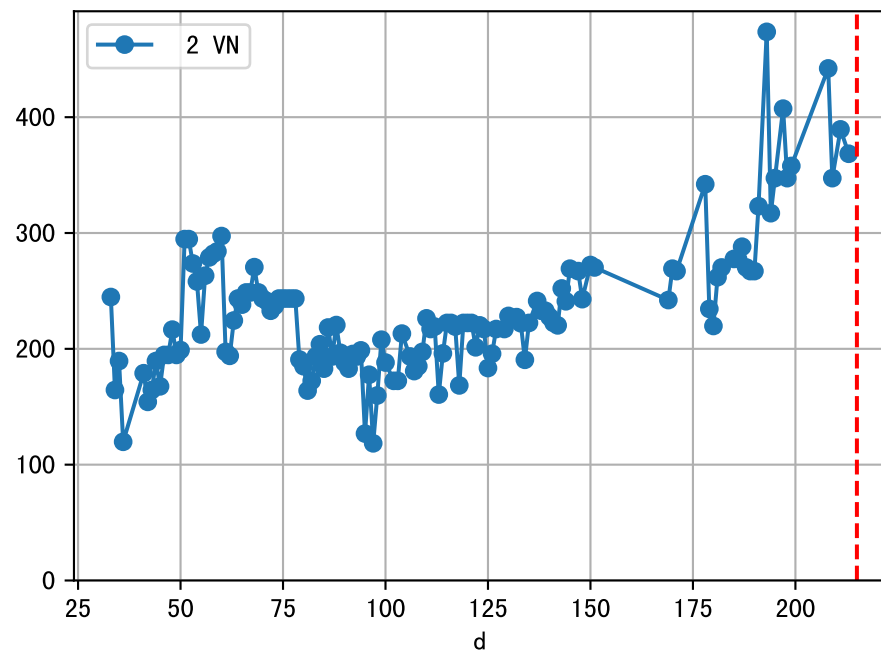
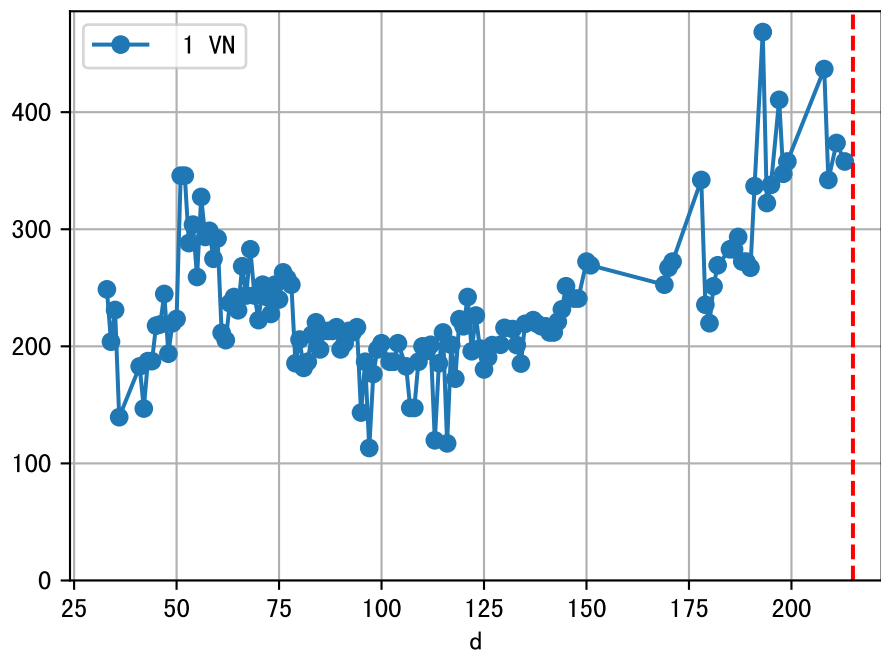
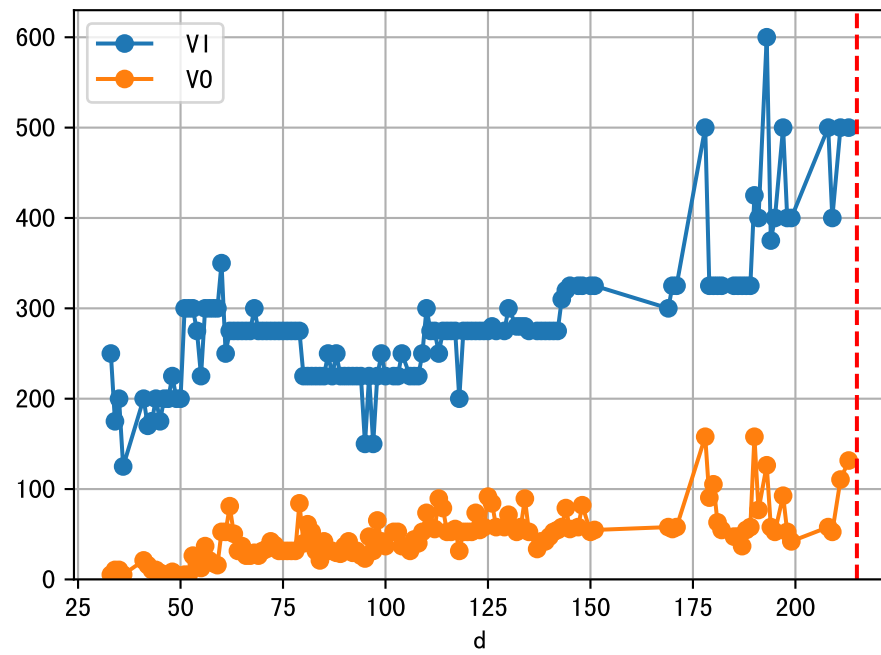


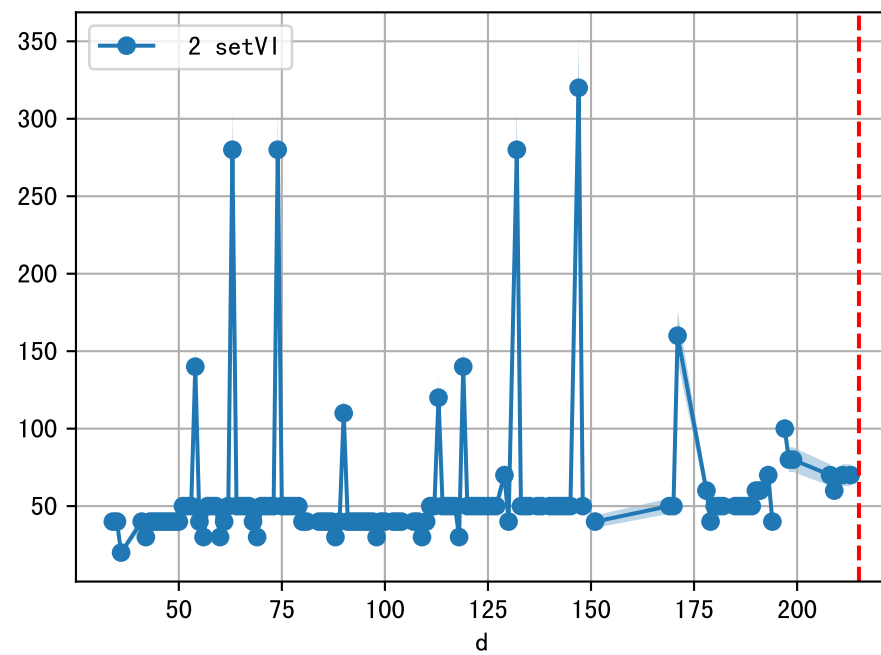
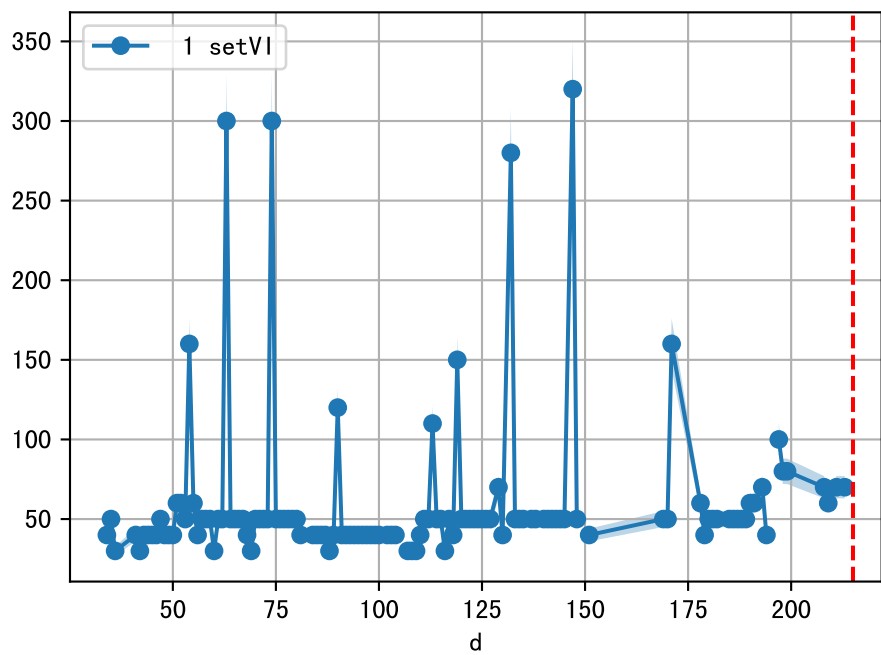
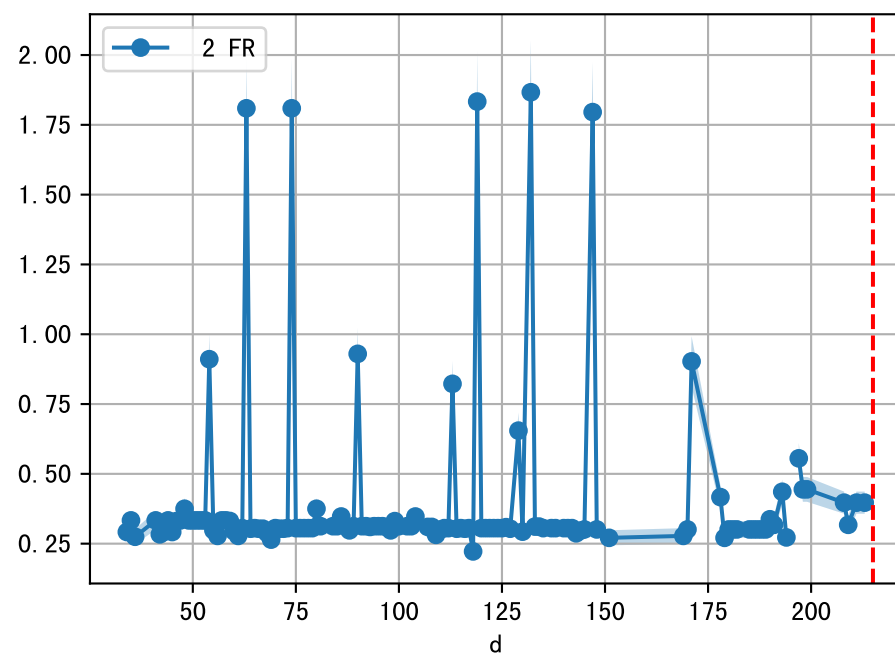
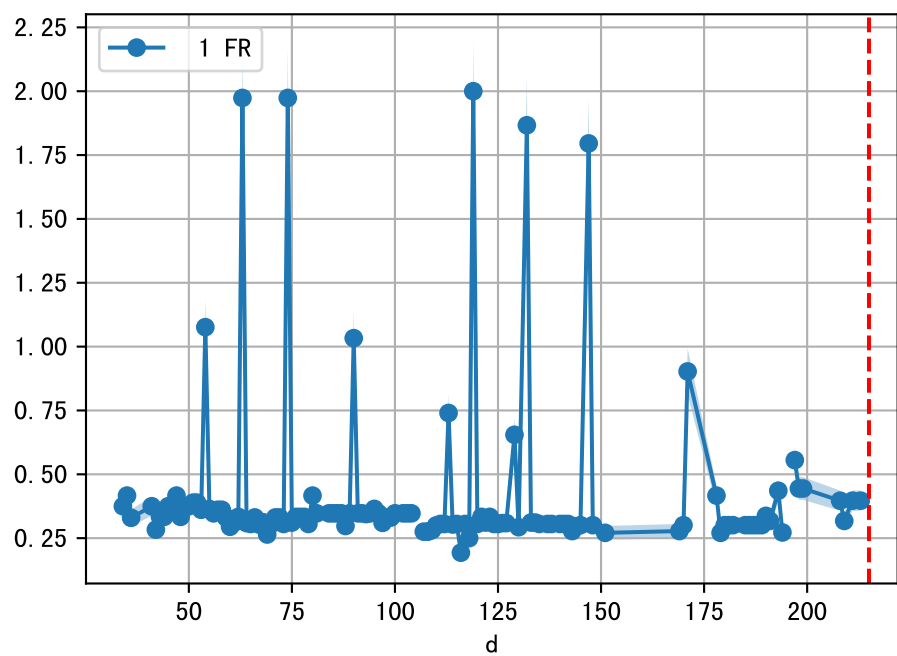
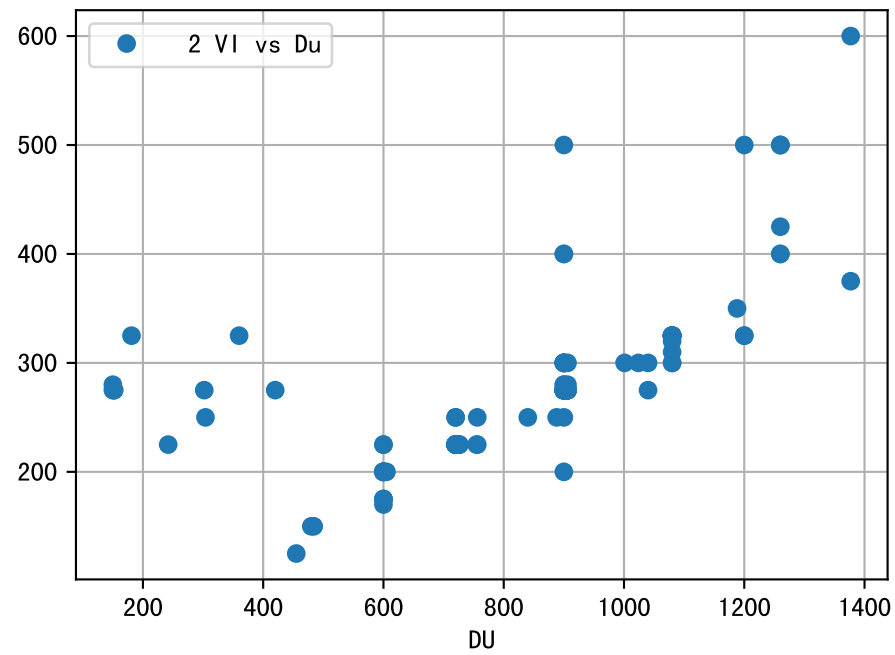
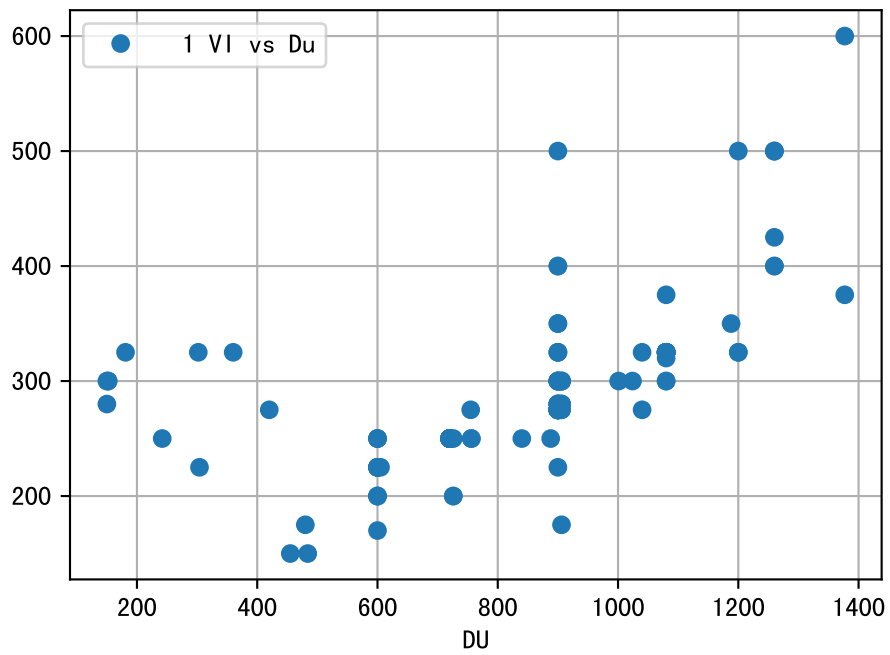
FgArea: [' 0']
SS40 XX11
2026-04-09 (Day 215)

fgNum 1 (at_row = 2.0)

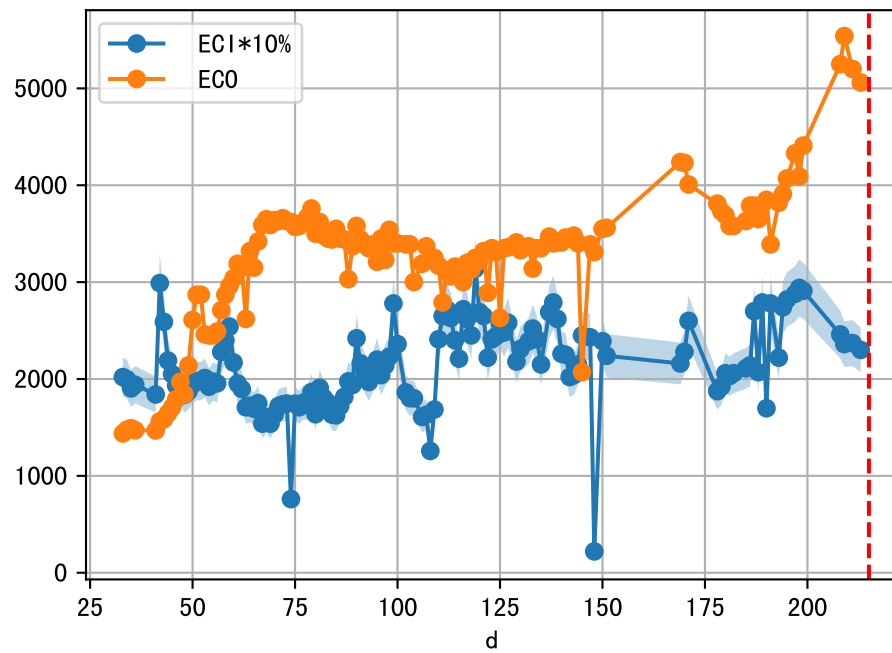


fgNum 2 (at_row = 47.0)

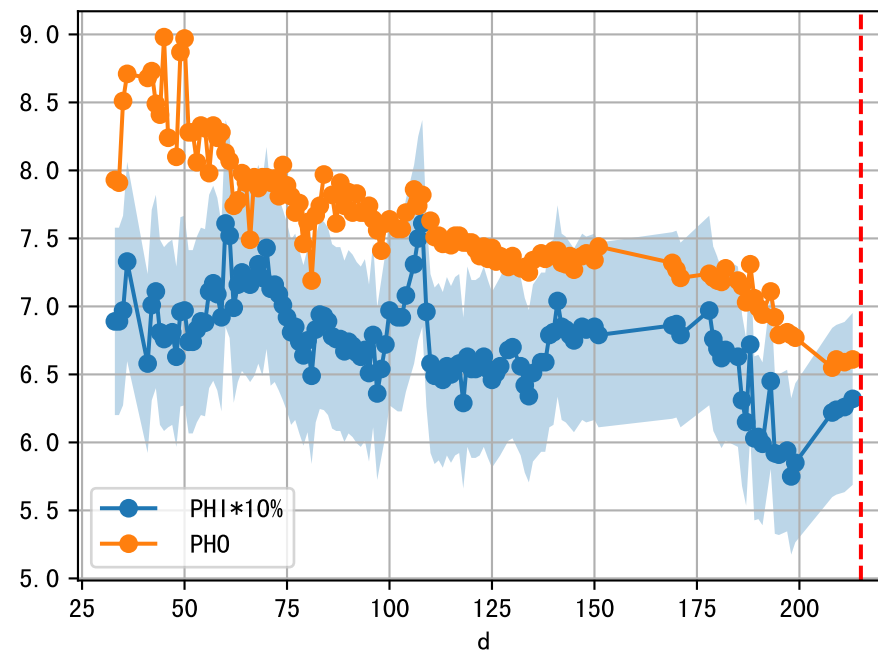
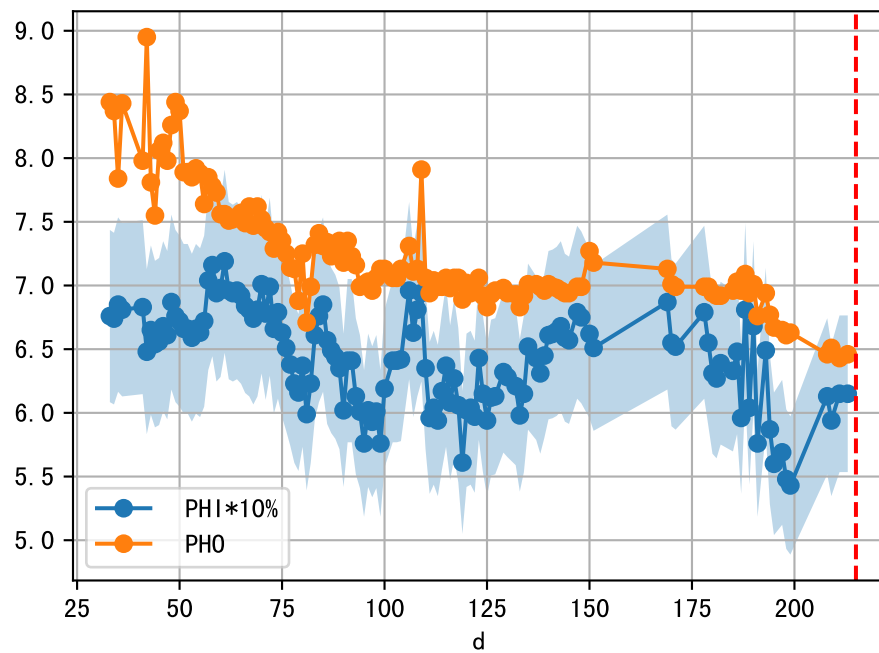
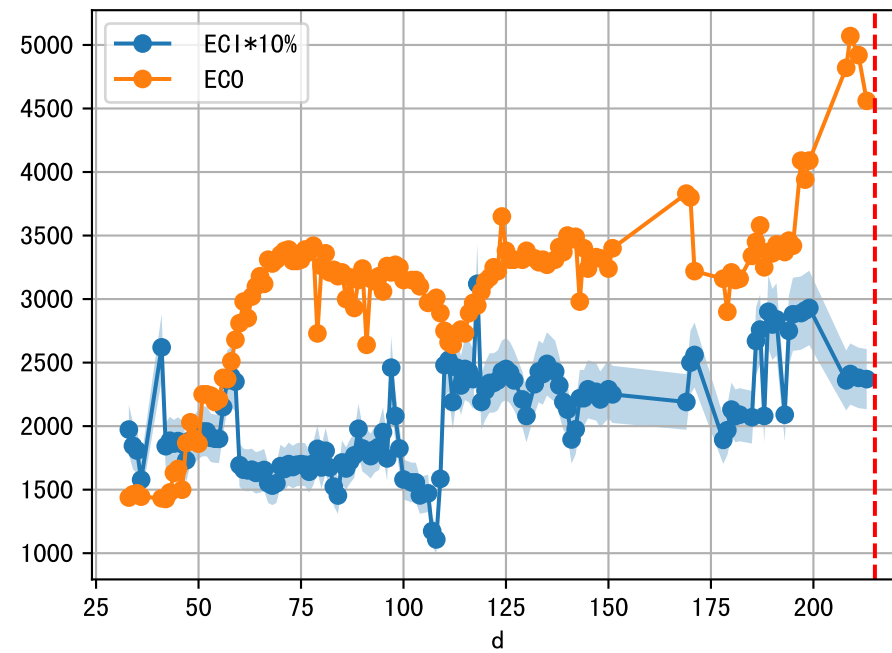




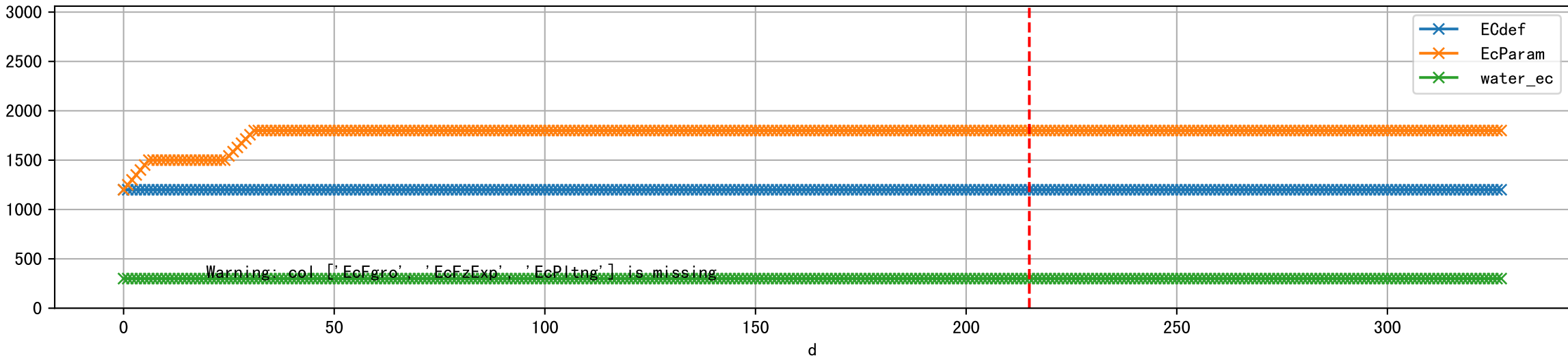
1 (fgArea = NA)



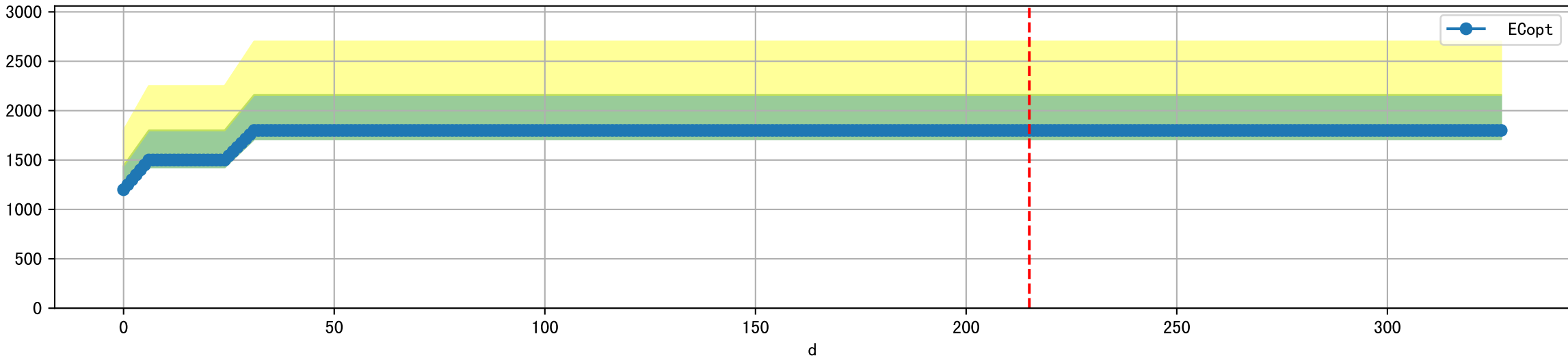
2 (fgArea = NA)



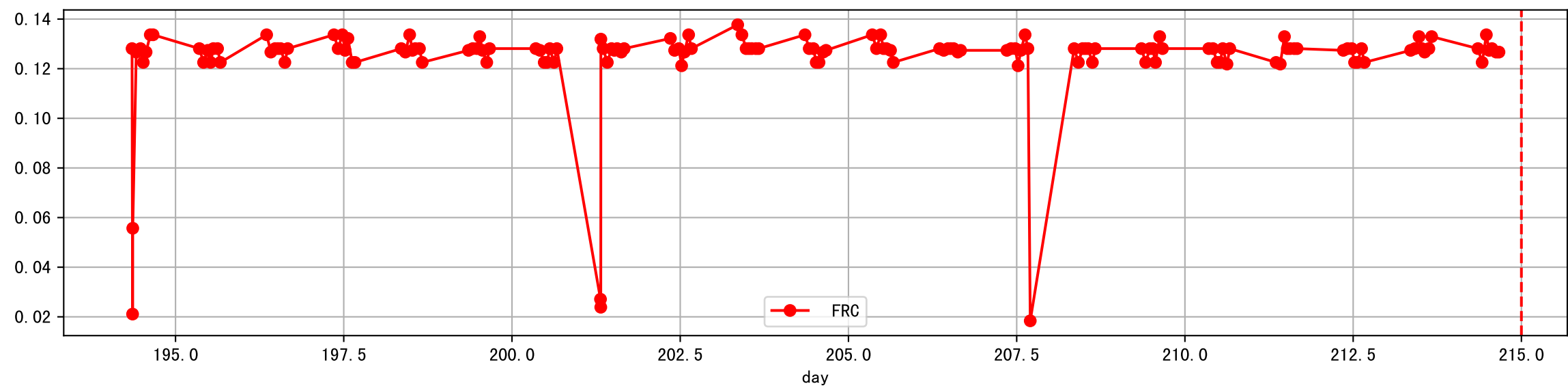
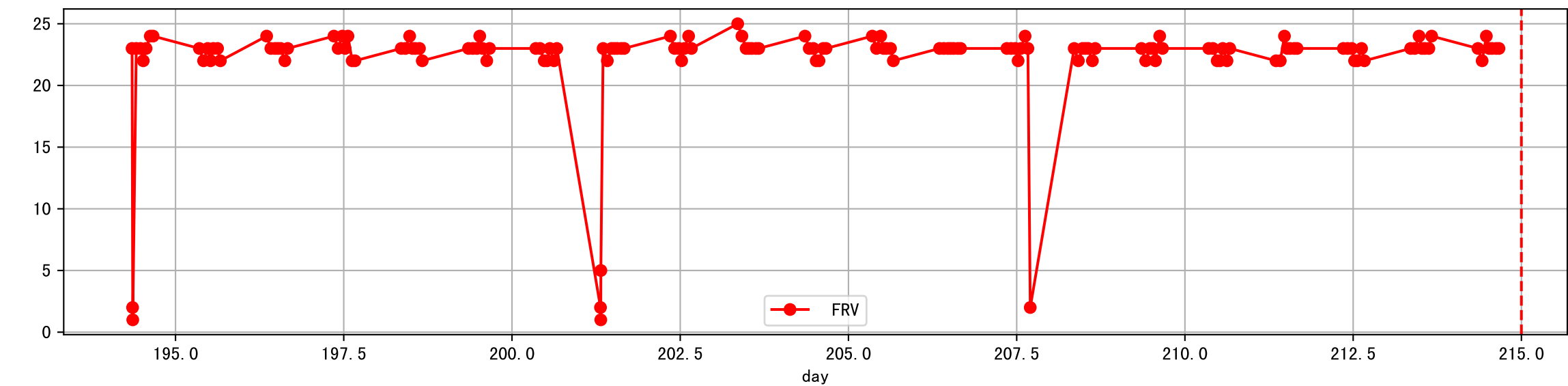
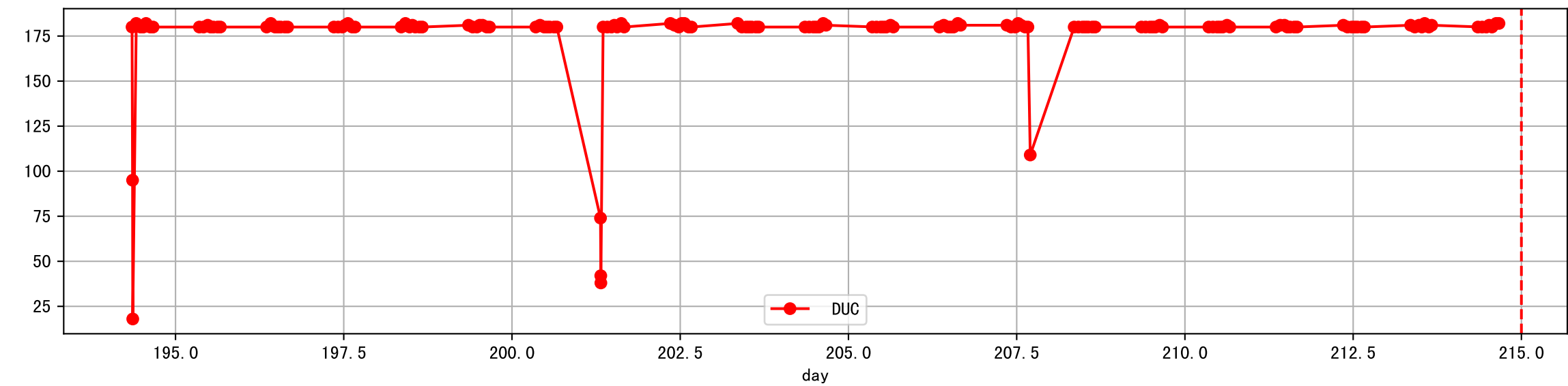
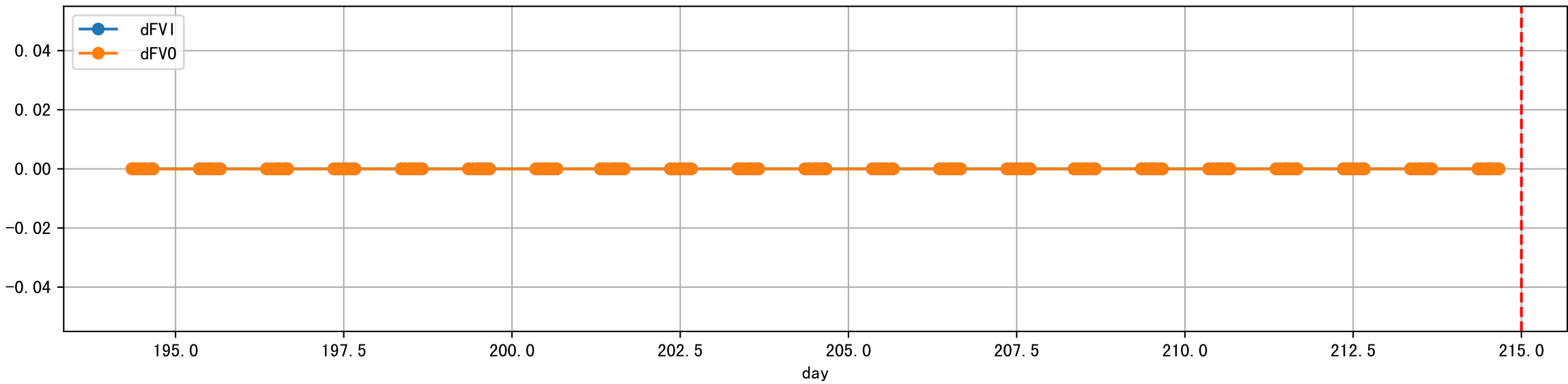
Plot [['EcFgro', 'EcFzExp', 'EcPltng', 'ECdef', 'EcParam', 'water_ec']]



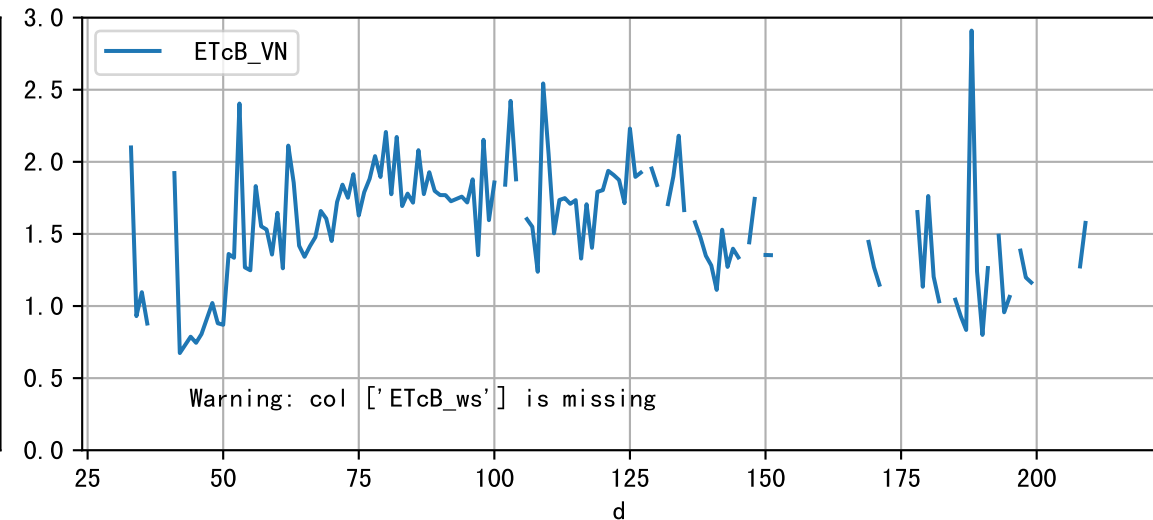
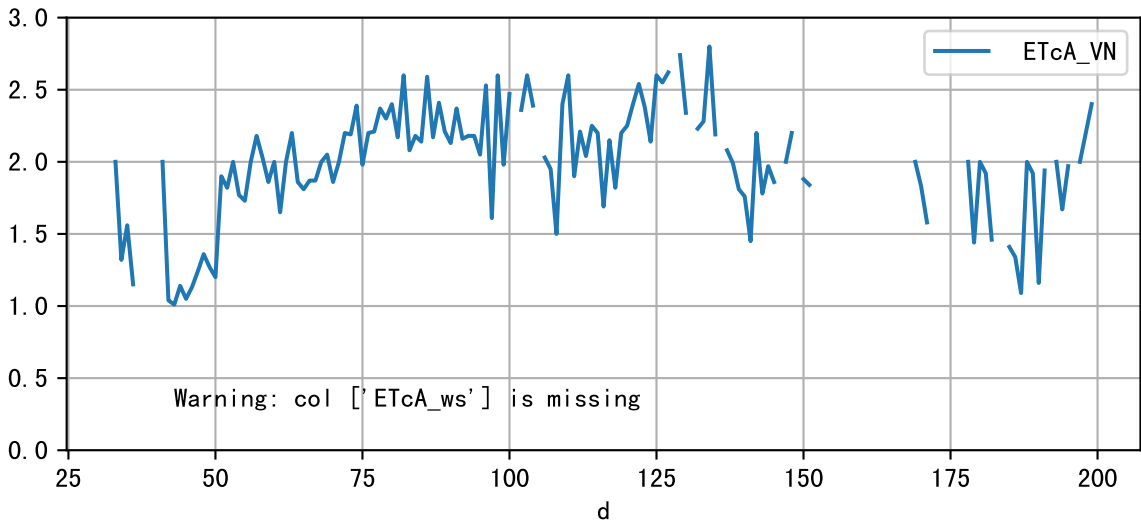
Plot [' ECopt']



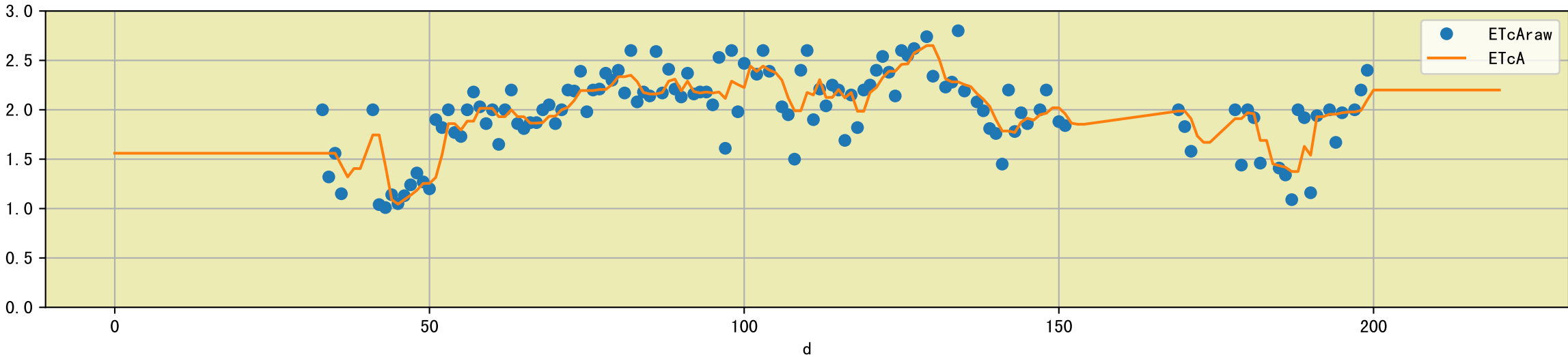
Plot Sensor and FgRec Data



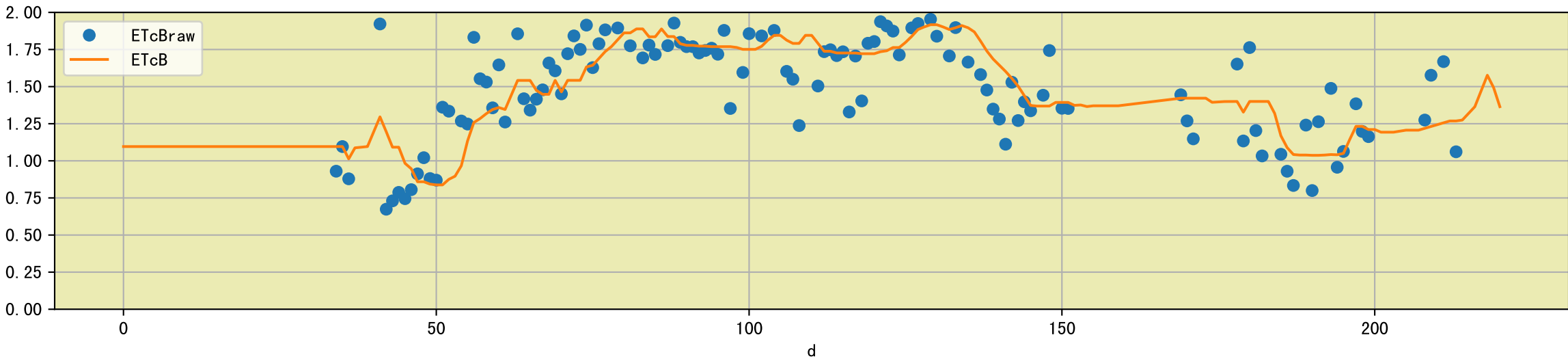
Plot [['ETcA_VN', 'ETcA_ws'], ['ETcB_VN', 'ETcB_ws']]

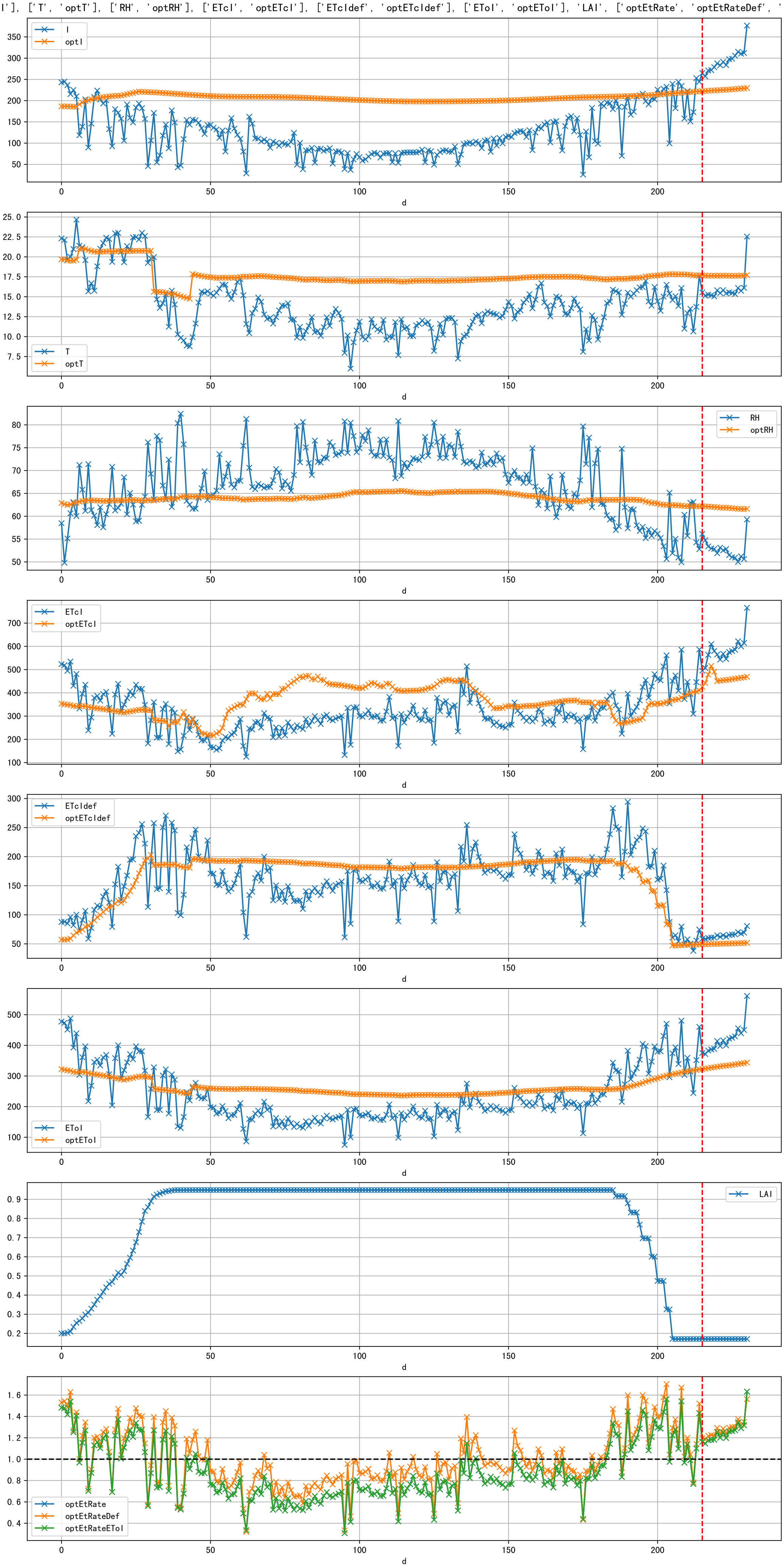


Plot [['ETcAraw:o', 'ETcA']]

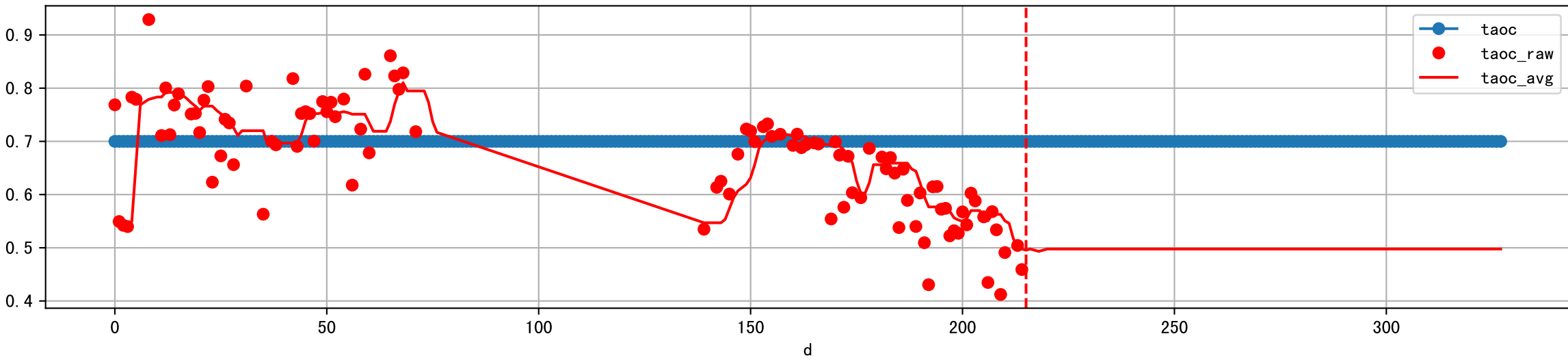


Plot [['ETcBraw:o', 'ETcB']]

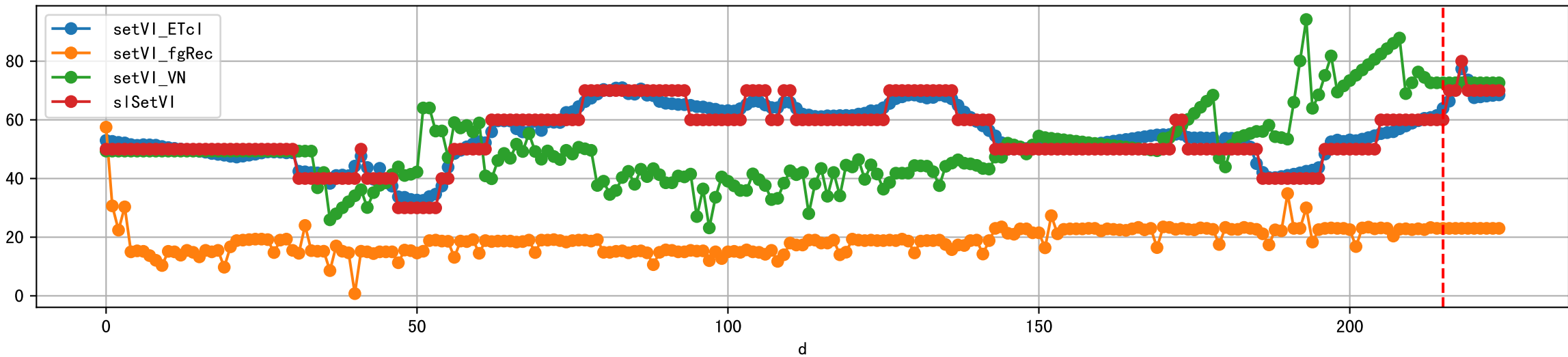




Plot [['taoc', 'taoc_raw:ro', 'taoc_avg:r-']]

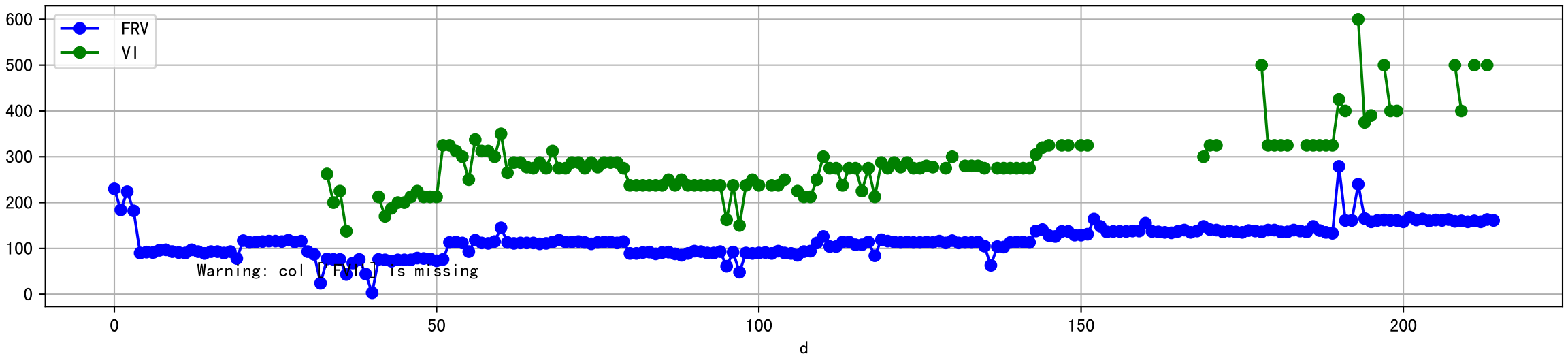


Plot [['setVI_ETcI', 'setVI_fgRec', 'setVI_VN', 'sISetVI']]

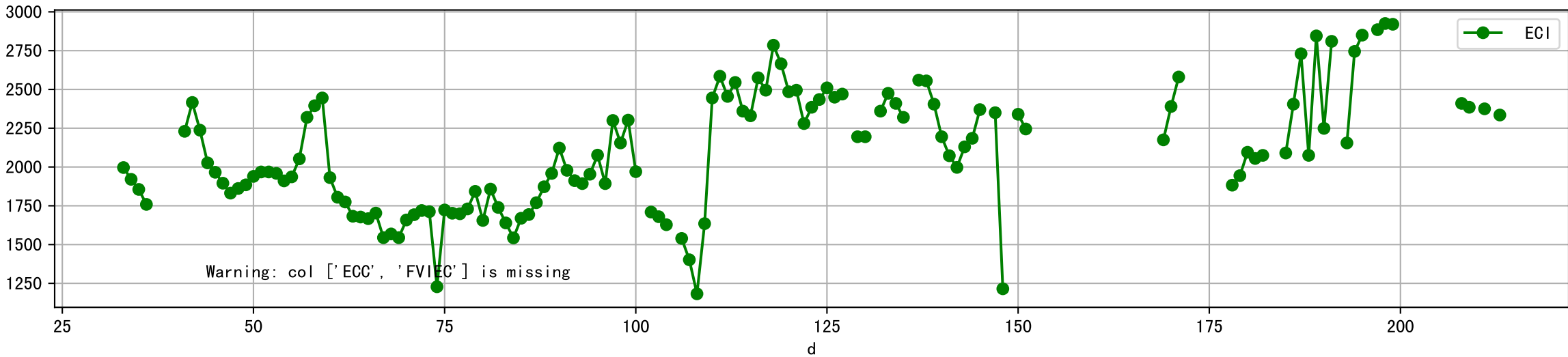




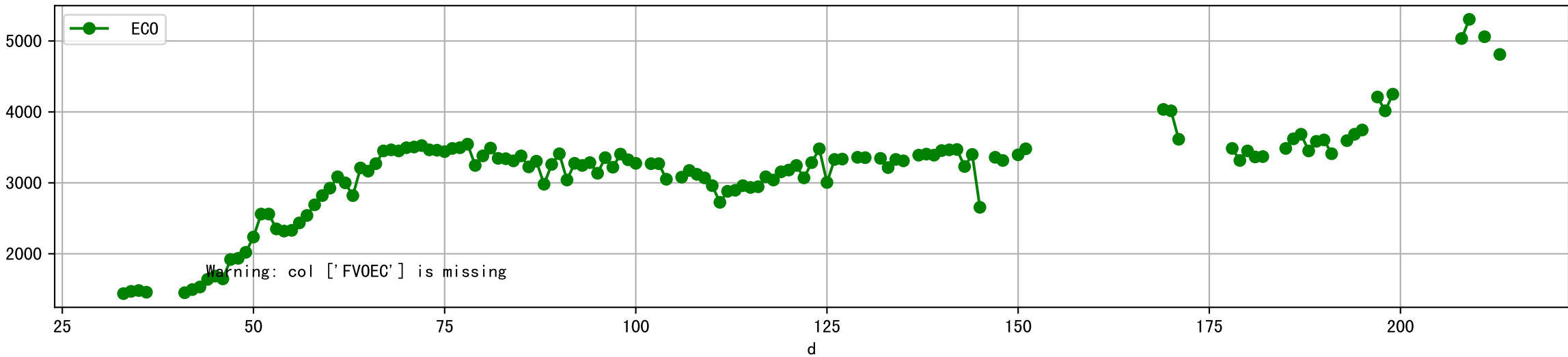
Plot [['FRV:b-o', 'FVI:r-o', 'VI:g-o']]



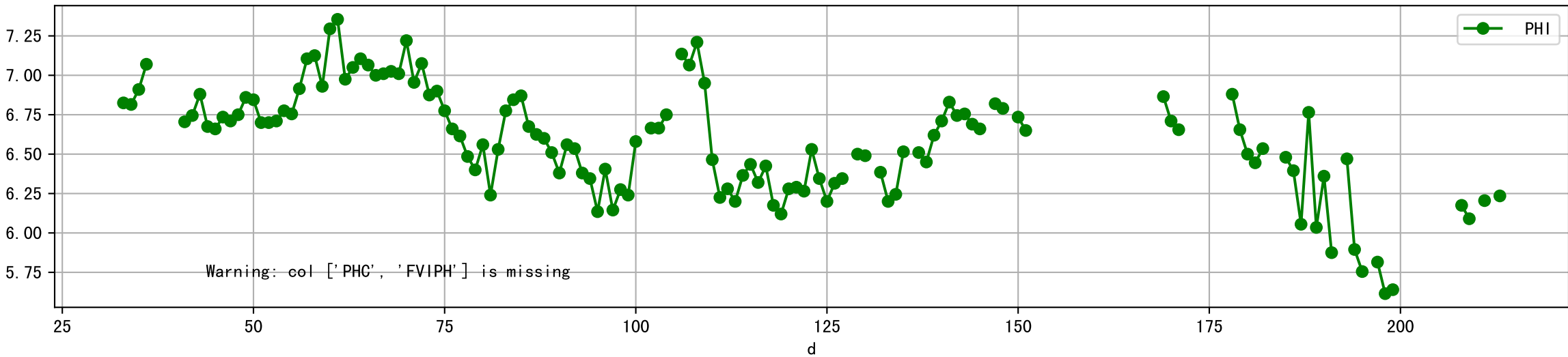
Plot [['ECC:b-o', 'FVIEC:r-o', 'ECI:g-o']]



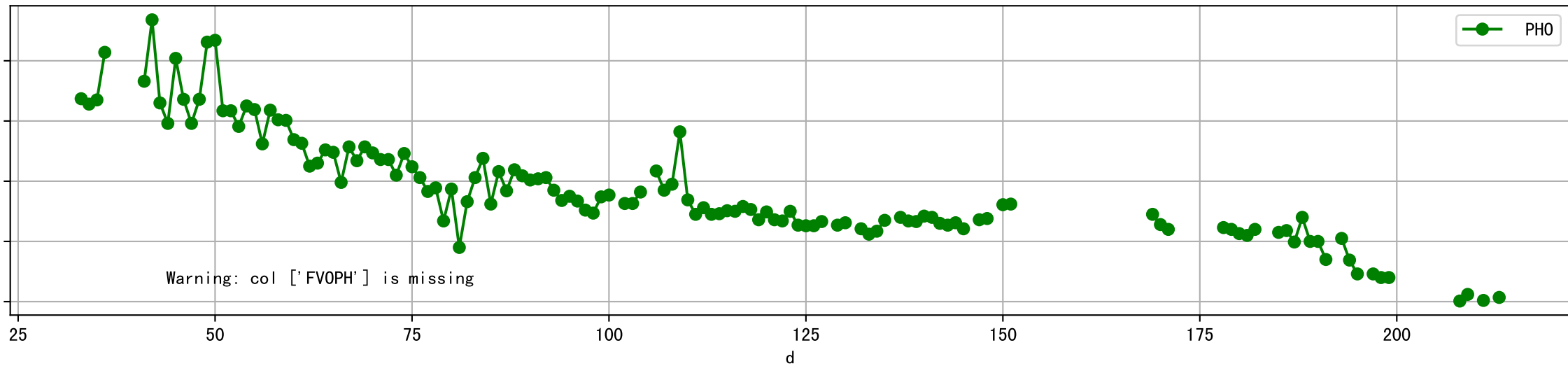
Plot [[' FVOEC:r-o', ' ECO:g-o']]



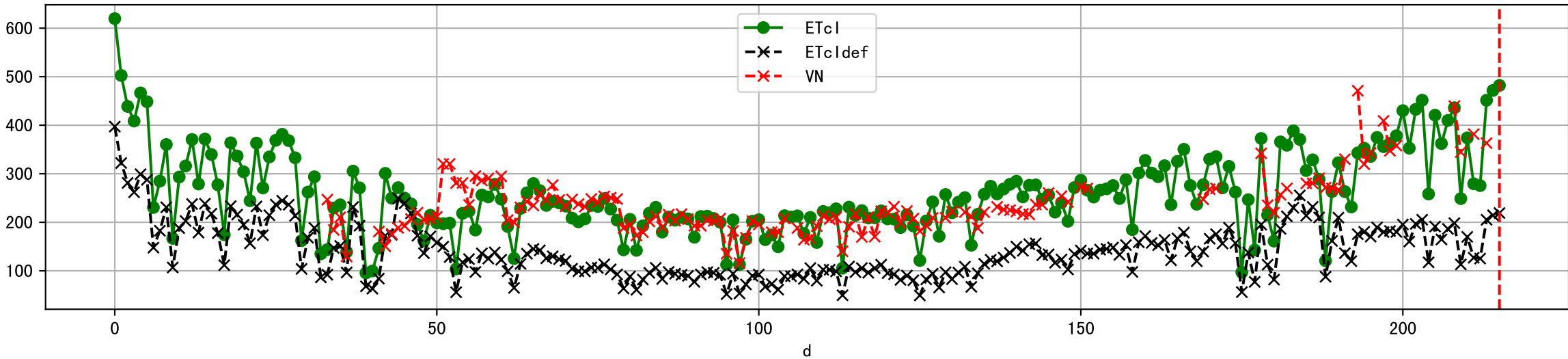
Plot [['PHC:b-o', 'FVIPH:r-o', 'PHI:g-o']]



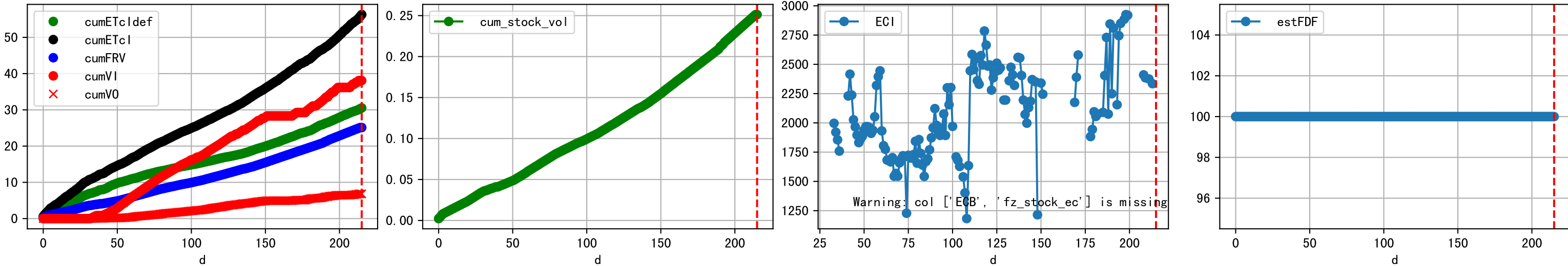
Plot [[' FVOPH:r-o' , ' PHO:g-o']]



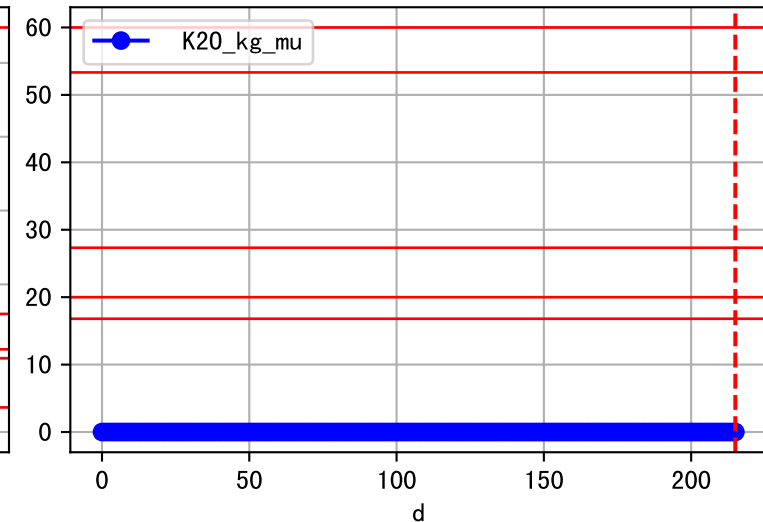
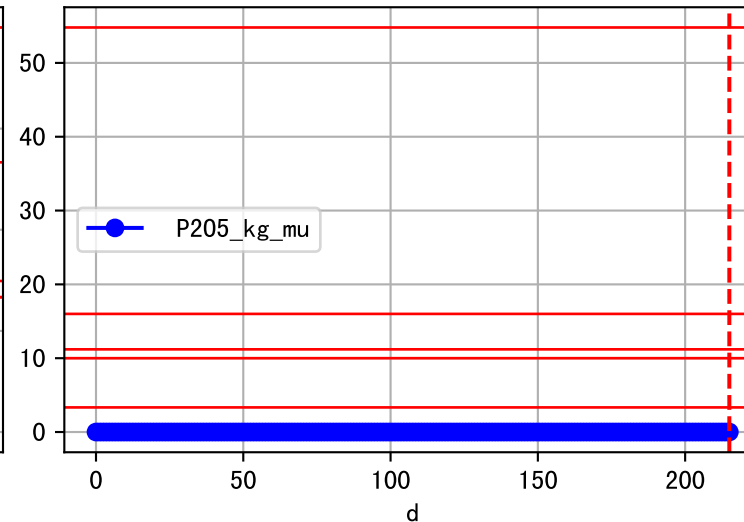
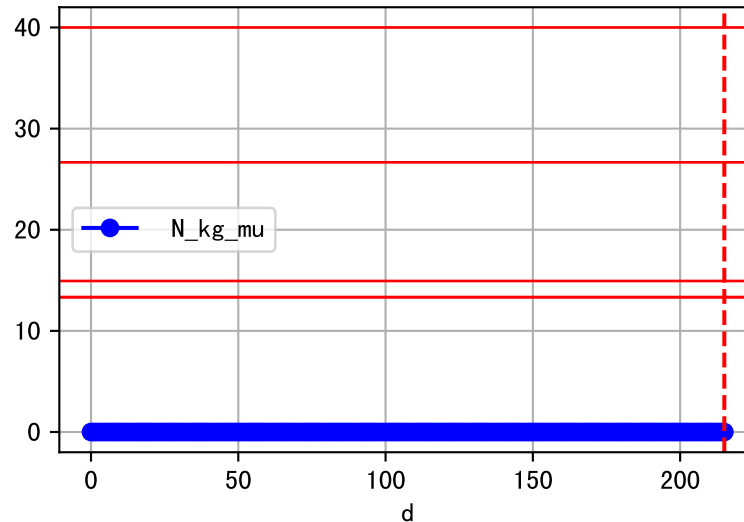
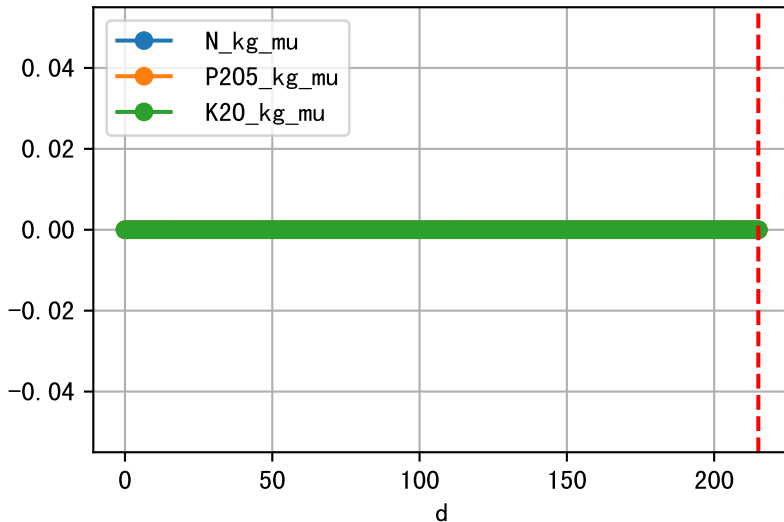
Plot ET/VN



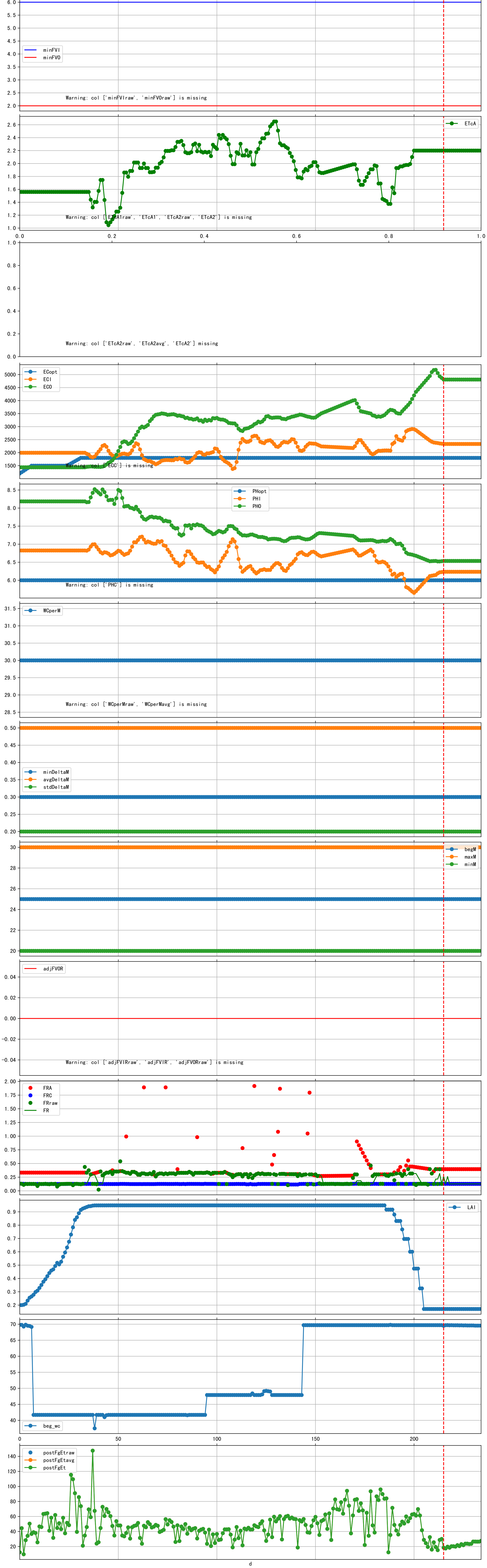
Plot Fv and fertilizer usage

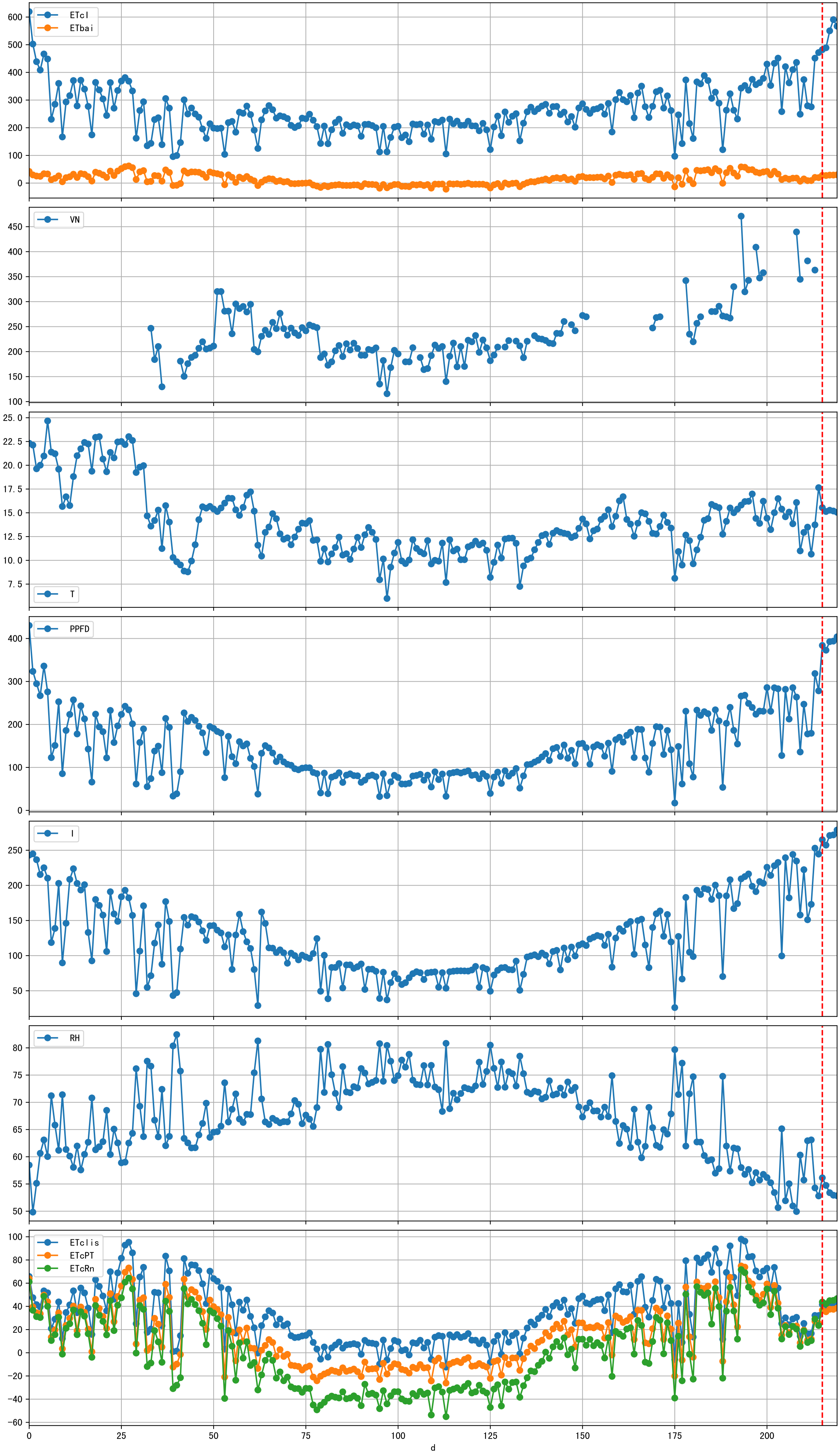


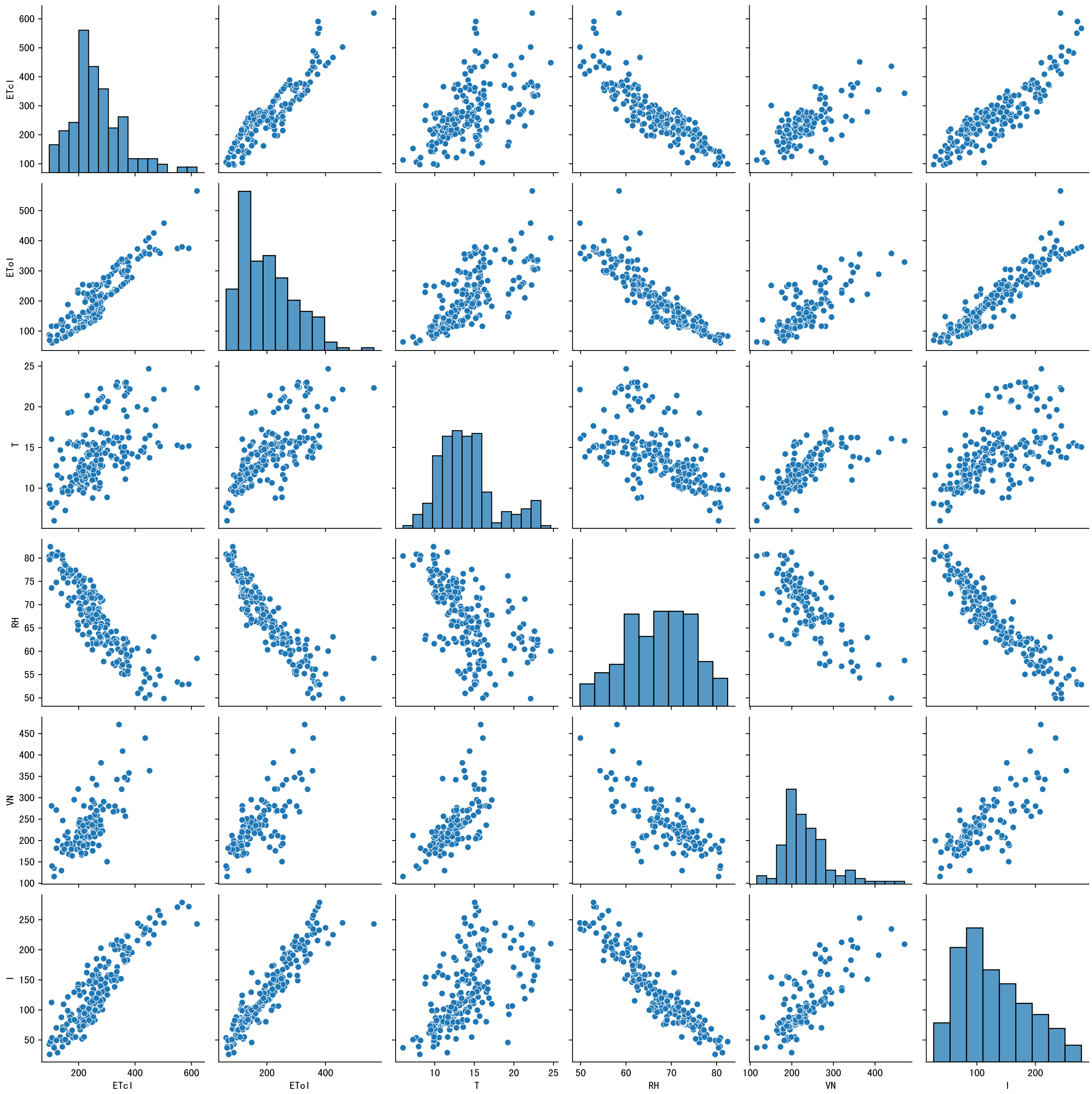
Fertilizer Range Source: kerleyL, kerleyH, UnivFL, TNAI, Haifa

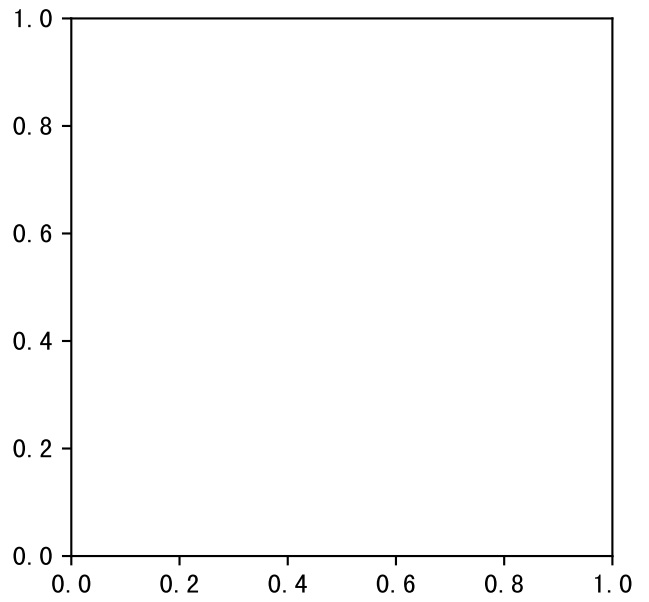
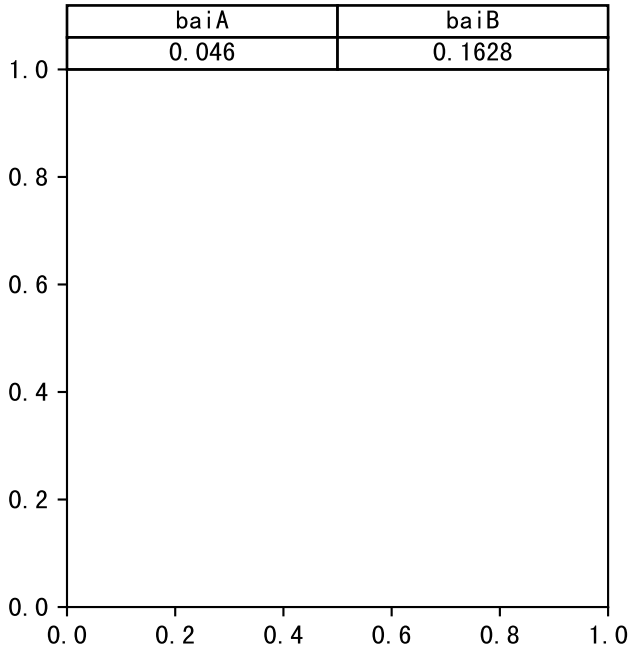
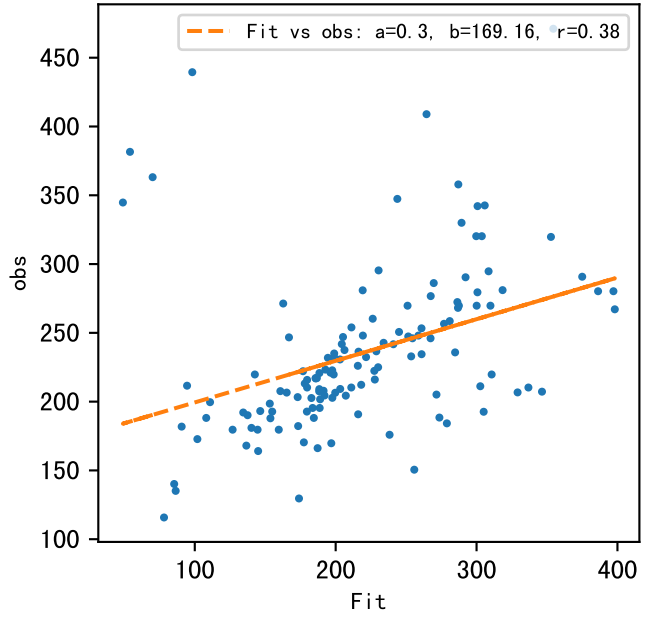
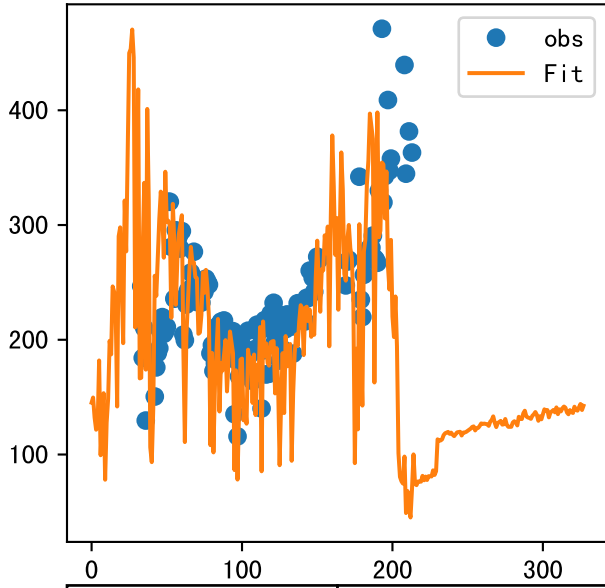


Trend plot forXX11_0

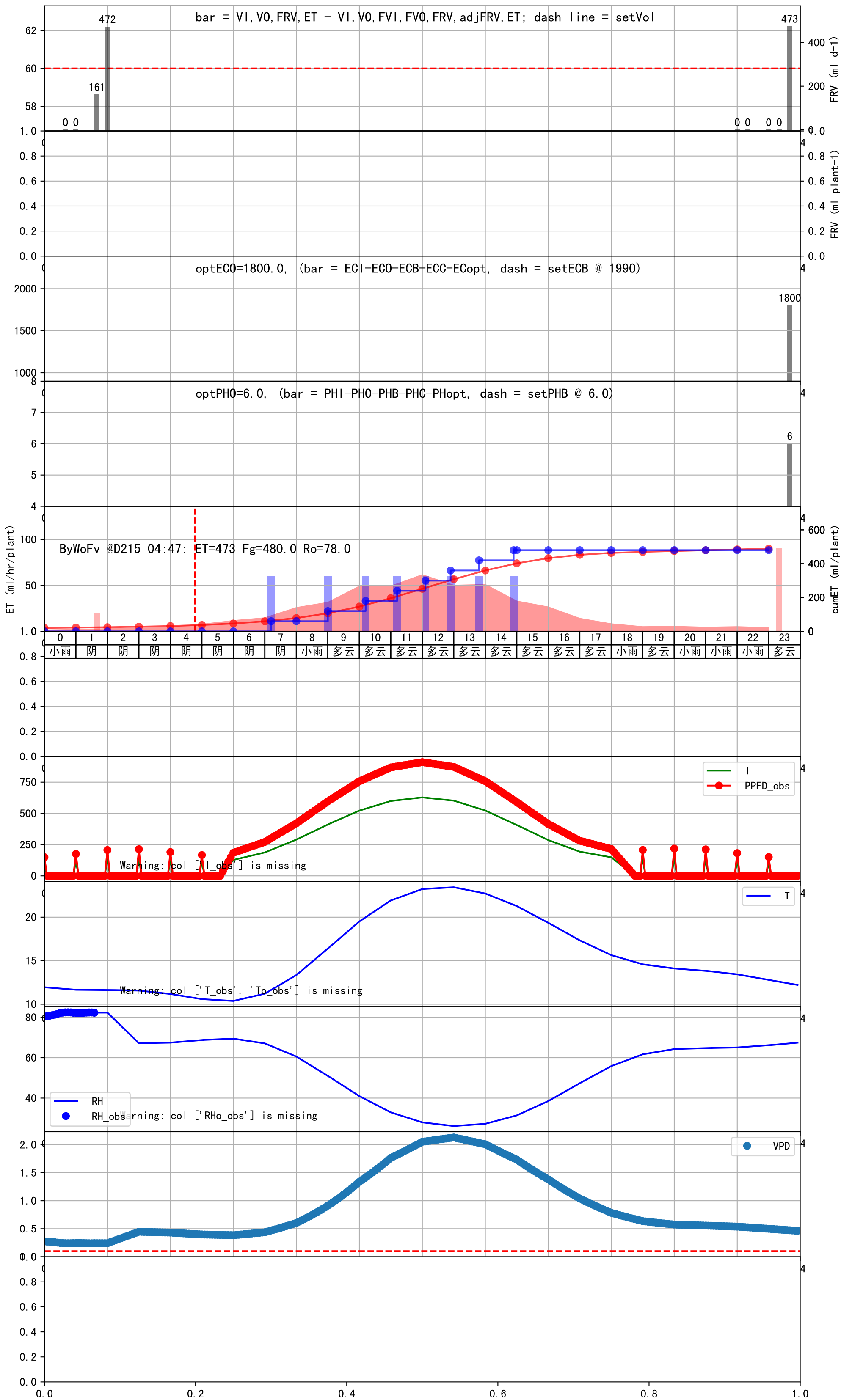








| 时间 | 灌溉时长(秒) | 灌溉量(毫升/株) | 灌溉总量(方/次) | 天气 | 注释 |
|-------|-------------|-----------|-----------|----|-----------------------|
| 07:10 | 231 | 60.0 | 0.598 | 阴 | 预期@07:10 手动 (未用传感器) |
| 09:00 | 231 | 60.0 | 0.598 | 多云 | 预期@09:00 手动 (未用传感器) |
| 10:10 | 231 | 60.0 | 0.598 | 多云 | 预期@10:10 手动 (未用传感器) |
| 11:10 | 231 | 60.0 | 0.598 | 多云 | 预期@11:10 手动 (未用传感器) |
| 12:05 | 231 | 60.0 | 0.598 | 多云 | 预期@12:05 手动 (未用传感器) |
| 12:55 | 231 | 60.0 | 0.598 | 多云 | 预期@12:55 手动 (未用传感器) |
| 13:50 | 231 | 60.0 | 0.598 | 多云 | 预期@13:50 手动 (未用传感器) |
| 14:55 | 231 | 60.0 | 0.598 | 多云 | 预期@14:55 手动 (未用传感器) |
| 总计 | 1848.0 (8次) | 480.0 | | | 建议进液EC: 1990, PH: 6.0 |



| 时间 | 灌溉时长(秒) | 灌溉量(毫升/株) | 灌溉总量(方/次) | 天气 | 注释 |
|-------|-------------|-----------|-----------|----|-----------------------|
| 07:10 | 180 | 60.0 | 0.598 | 多云 | 假设@07:10 手动 (未用传感器) |
| 09:00 | 180 | 60.0 | 0.598 | 多云 | 假设@09:00 手动 (未用传感器) |
| 09:55 | 180 | 60.0 | 0.598 | 多云 | 假设@09:55 手动 (未用传感器) |
| 10:50 | 180 | 60.0 | 0.598 | 多云 | 假设@10:50 手动 (未用传感器) |
| 11:55 | 180 | 60.0 | 0.598 | 多云 | 假设@11:55 手动 (未用传感器) |
| 12:45 | 180 | 60.0 | 0.598 | 多云 | 假设@12:45 手动 (未用传感器) |
| 13:45 | 180 | 60.0 | 0.598 | 多云 | 假设@13:45 手动 (未用传感器) |
| 14:45 | 180 | 60.0 | 0.598 | 多云 | 假设@14:45 手动 (未用传感器) |
| 总计 | 1440.0 (8次) | 480.0 | | | 建议进液EC: 1990, PH: 6.0 |

滴头平均流速偏小 (0.13 vs def 0.5), 请检查
 施肥机灌溉量与预期值不符 (23.0 : 58.0), 可能水表需要校准
 默认实际灌溉58.0 ml.

| 时间 | 灌溉时长(秒) | 灌溉量(毫升/株) | 灌溉总量(方/次) | 天气 | 注释 |
|-------|-------------|-----------|-----------|----|-----------------------|
| 07:15 | 181 | 60.0 | 0.598 | 晴 | 假设@07:15 手动 (未用传感器) |
| 09:05 | 181 | 60.0 | 0.598 | 晴 | 假设@09:05 手动 (未用传感器) |
| 10:10 | 181 | 60.0 | 0.598 | 晴 | 假设@10:10 手动 (未用传感器) |
| 11:30 | 181 | 60.0 | 0.598 | 晴 | 假设@11:30 手动 (未用传感器) |
| 12:35 | 181 | 60.0 | 0.598 | 晴 | 假设@12:35 手动 (未用传感器) |
| 13:25 | 181 | 60.0 | 0.598 | 晴 | 假设@13:25 手动 (未用传感器) |
| 14:20 | 181 | 60.0 | 0.598 | 晴 | 假设@14:20 手动 (未用传感器) |
| 15:30 | 181 | 60.0 | 0.598 | 晴 | 假设@15:30 手动 (未用传感器) |
| 总计 | 1448.0 (8次) | 480.0 | | | 建议进液EC: 2010, PH: 6.0 |

滴头平均流速偏小 (0.13 vs def 0.5), 请检查
 施肥机灌溉量与预期值不符 (24.0 : 40.0), 可能水表需要校准
 上次灌溉时长未按模型建议 (181 vs 273.0)
 默认实际灌溉40.0 ml.

| 时间 | 灌溉时长(秒) | 灌溉量(毫升/株) | 灌溉总量(方/次) | 天气 | 注释 |
|-------|------------|-----------|-----------|----|-----------------------|
| 07:15 | 181 | 60.0 | 0.598 | 多云 | 假设@07:15 手动 (未用传感器) |
| 09:10 | 181 | 60.0 | 0.598 | 多云 | 假设@09:10 手动 (未用传感器) |
| 10:20 | 181 | 60.0 | 0.598 | 多云 | 假设@10:20 手动 (未用传感器) |
| 12:35 | 181 | 60.0 | 0.598 | 多云 | 假设@12:35 手动 (未用传感器) |
| 总计 | 724.0 (4次) | 240.0 | | | 建议进液EC: 2160, PH: 6.0 |

滴头平均流速偏小 (0.13 vs def 0.5), 请检查
 施肥机灌溉量与预期值不符 (22.0 : 40.0), 可能水表需要校准
 上次灌溉时长未按模型建议 (180 vs 273.0)
 默认实际灌溉40.0 ml.

| 时间 | 灌溉时长(秒) | 灌溉量(毫升/株) | 灌溉总量(方/次) | 天气 | 注释 |
|-------|------------|-----------|-----------|----|-----------------------|
| 07:15 | 180 | 60.0 | 0.598 | 晴 | 假设@07:15 手动 (未用传感器) |
| 09:10 | 180 | 60.0 | 0.598 | 多云 | 假设@09:10 手动 (未用传感器) |
| 10:20 | 180 | 60.0 | 0.598 | 多云 | 假设@10:20 手动 (未用传感器) |
| 12:00 | 180 | 60.0 | 0.598 | 多云 | 假设@12:00 手动 (未用传感器) |
| 总计 | 720.0 (4次) | 240.0 | | | 建议进液EC: 2160, PH: 6.0 |

滴头平均流速偏小 (0.13 vs def 0.5), 请检查
 上次灌溉时长未按模型建议 (180 vs 462.0)
 默认实际灌溉23.0 ml.

