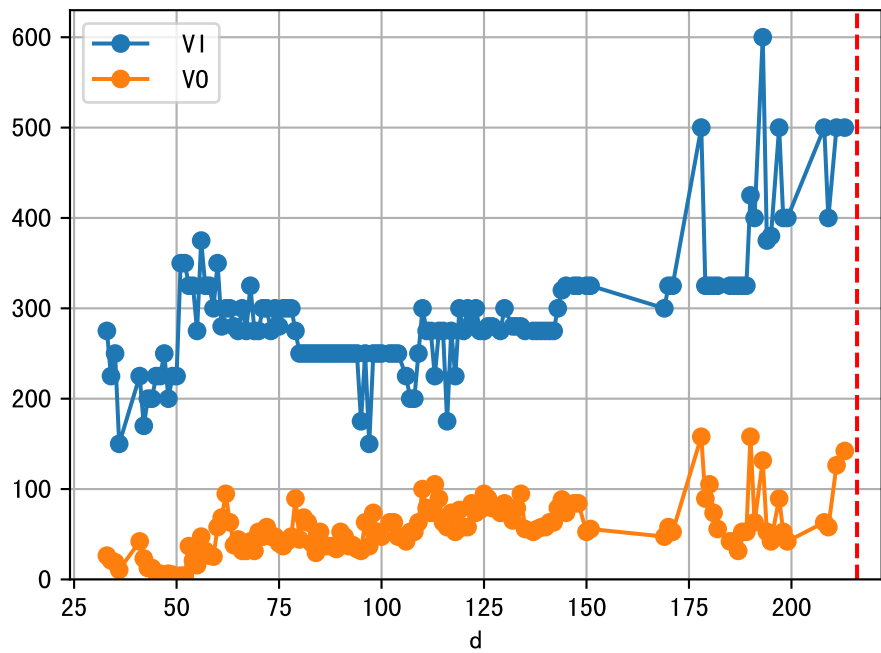
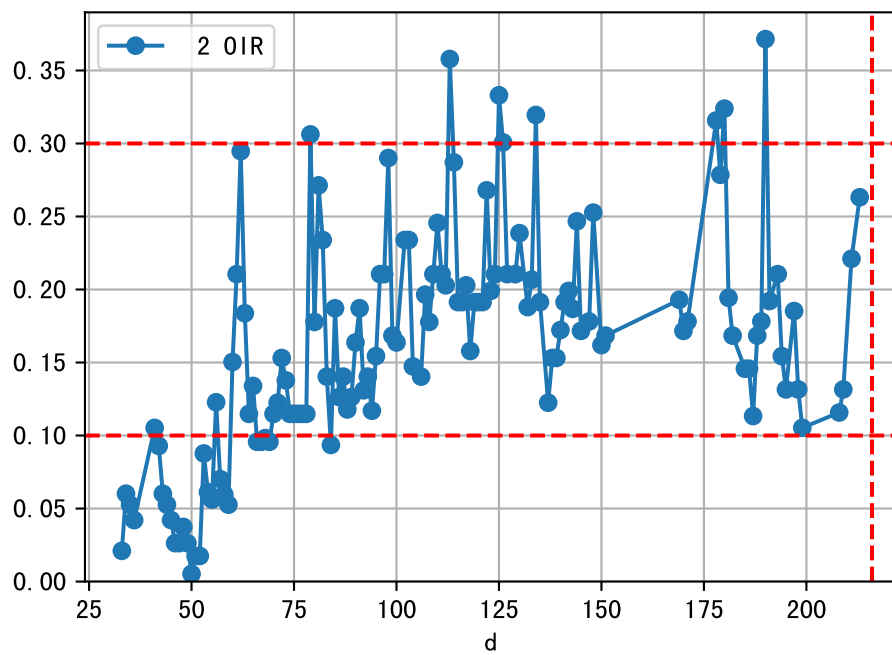
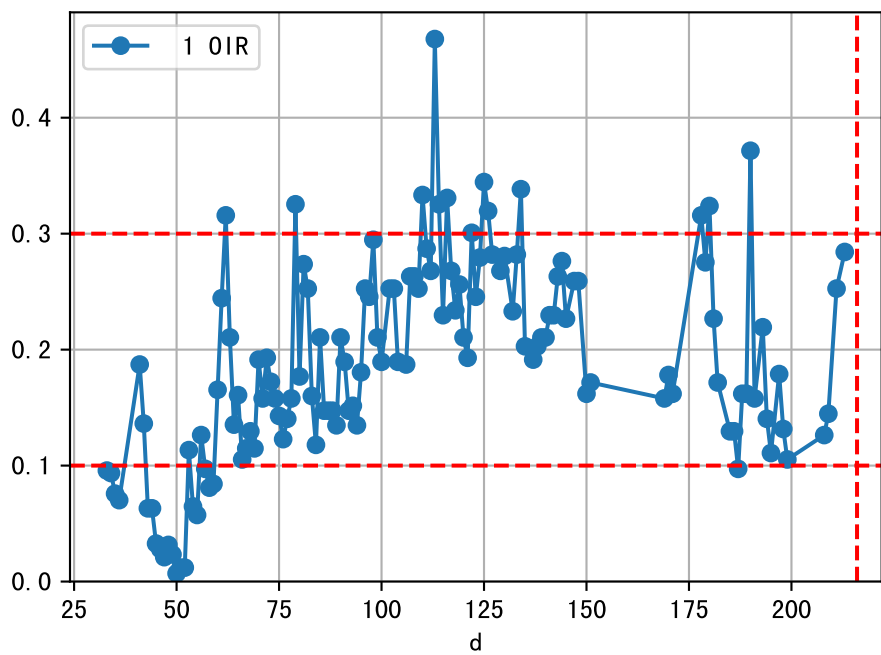
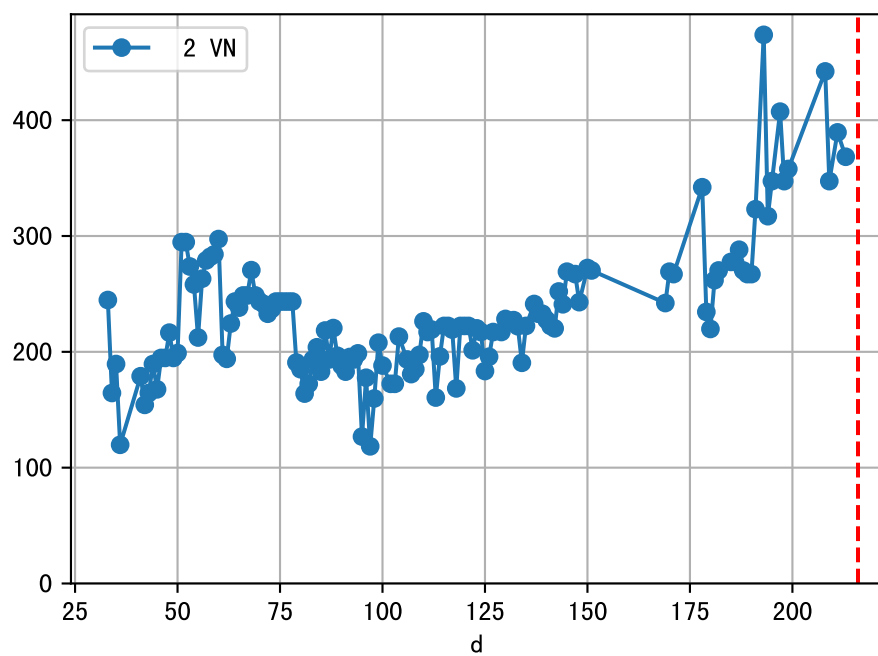
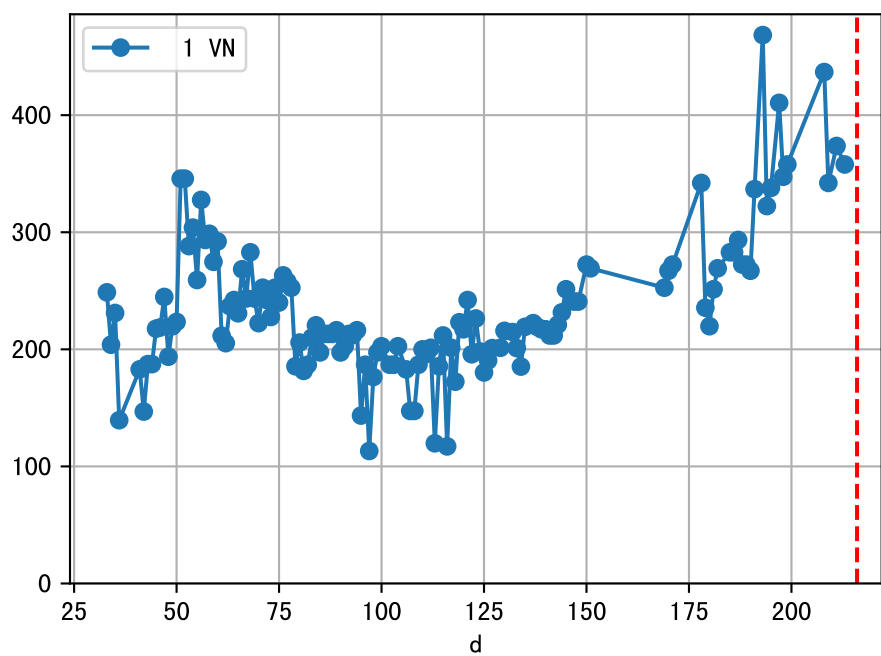
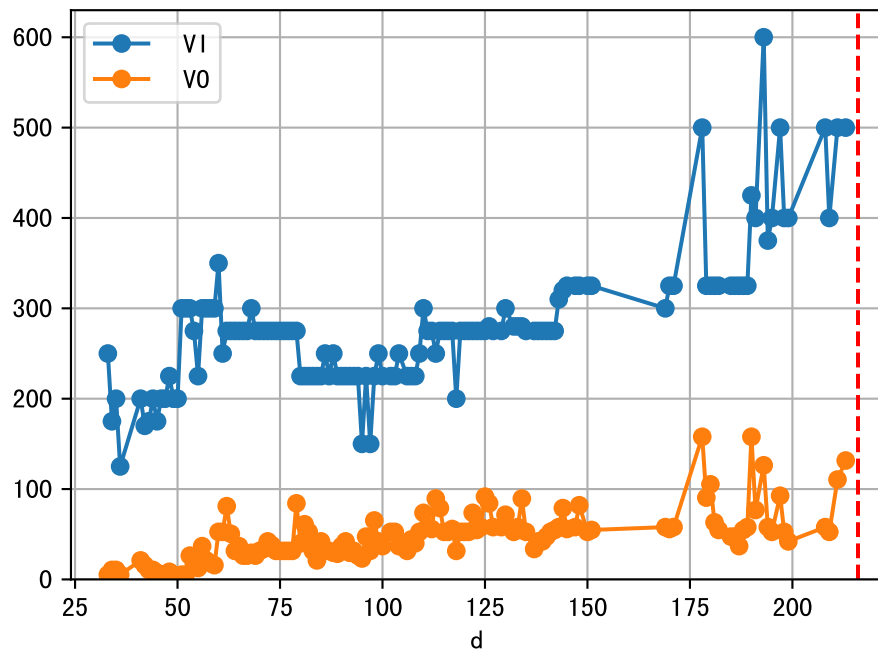


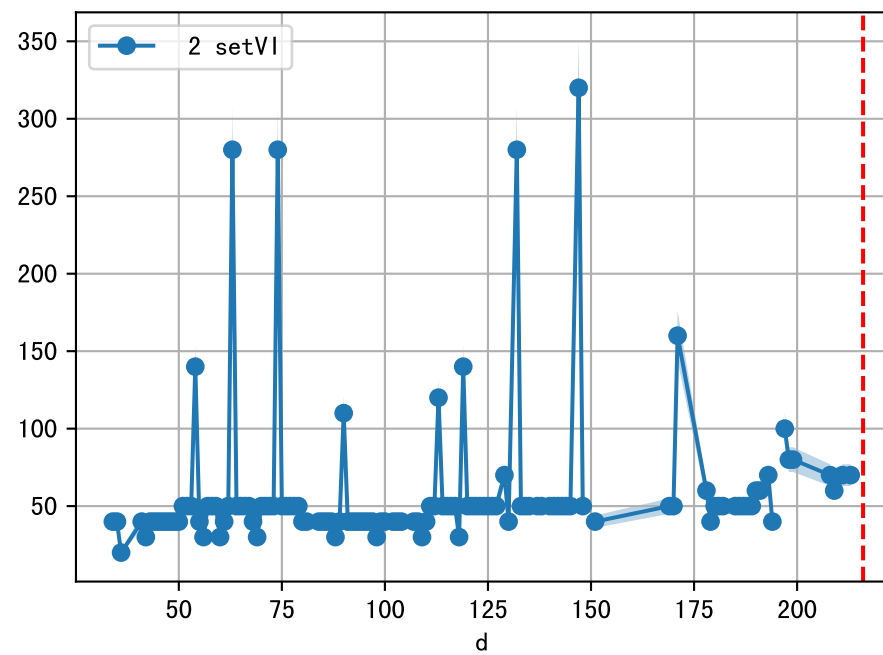
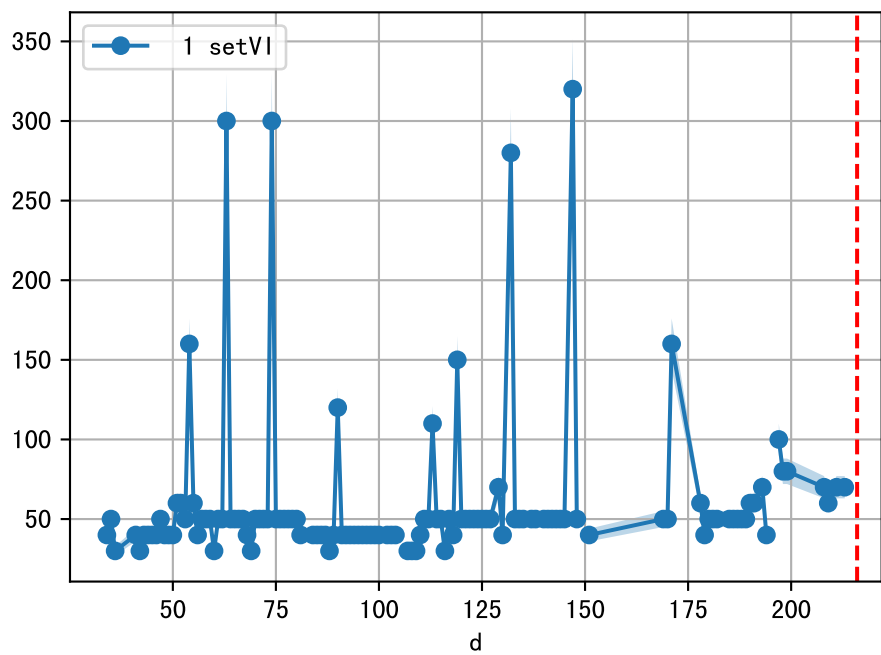
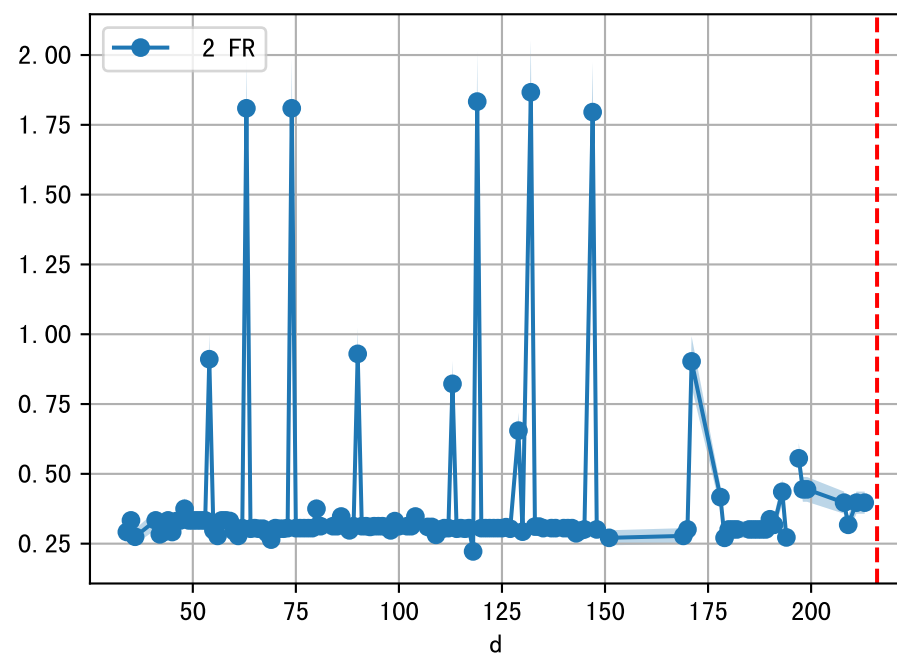
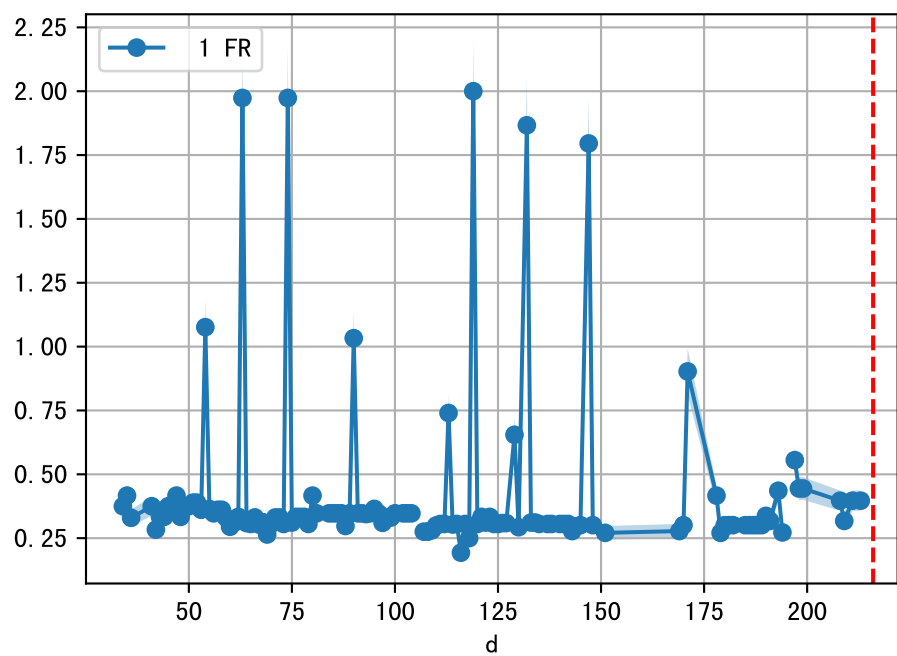
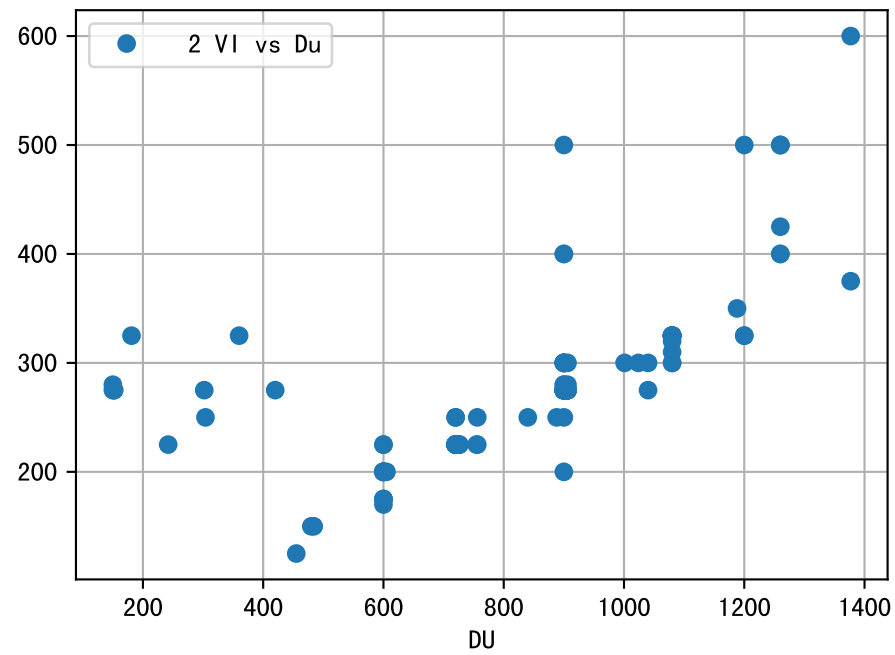
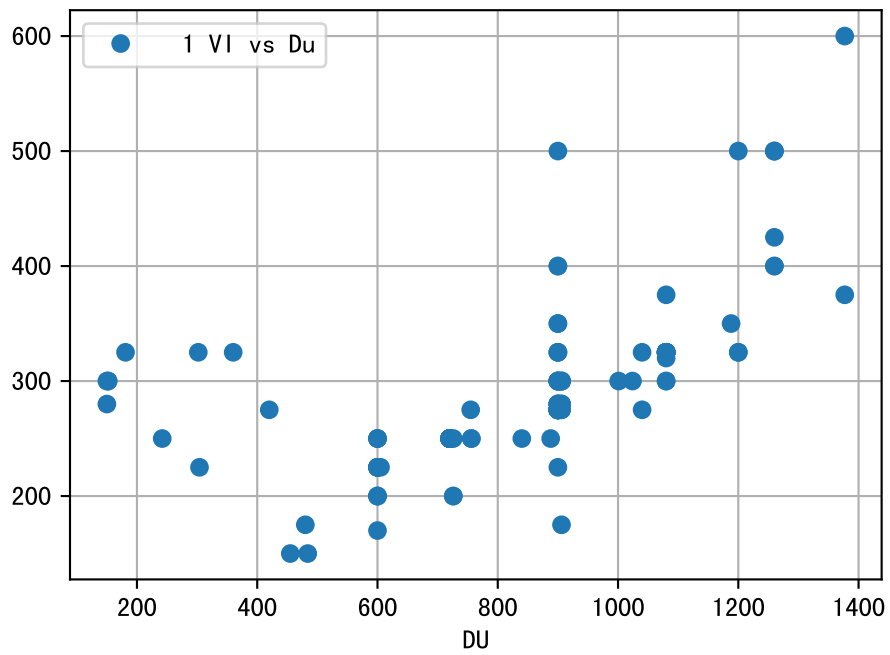
FgArea: [' 0']
SS40 XX11
2026-04-10 (Day 216)

fgNum 1 (at_row = 2.0)

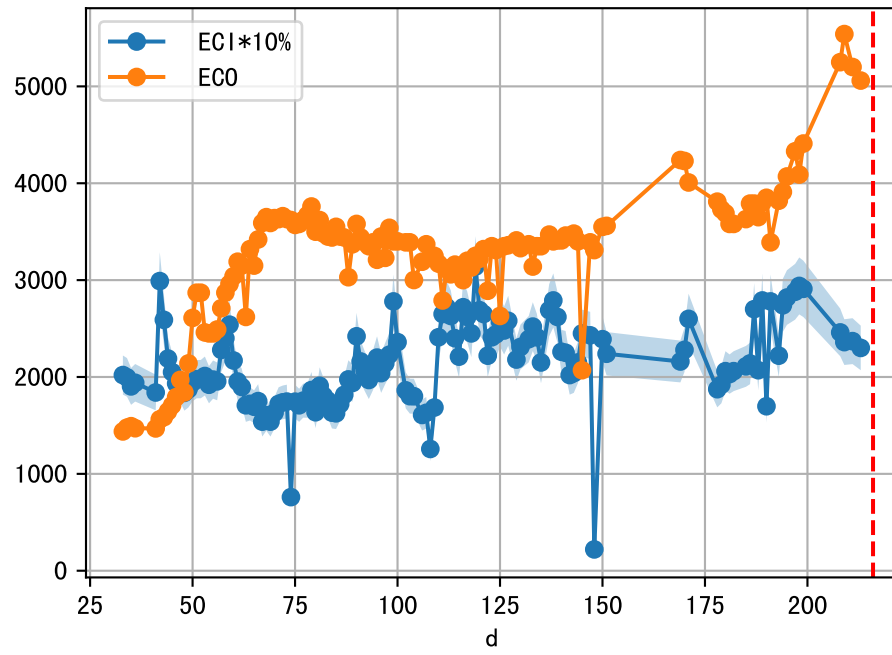


fgNum 2 (at_row = 47.0)

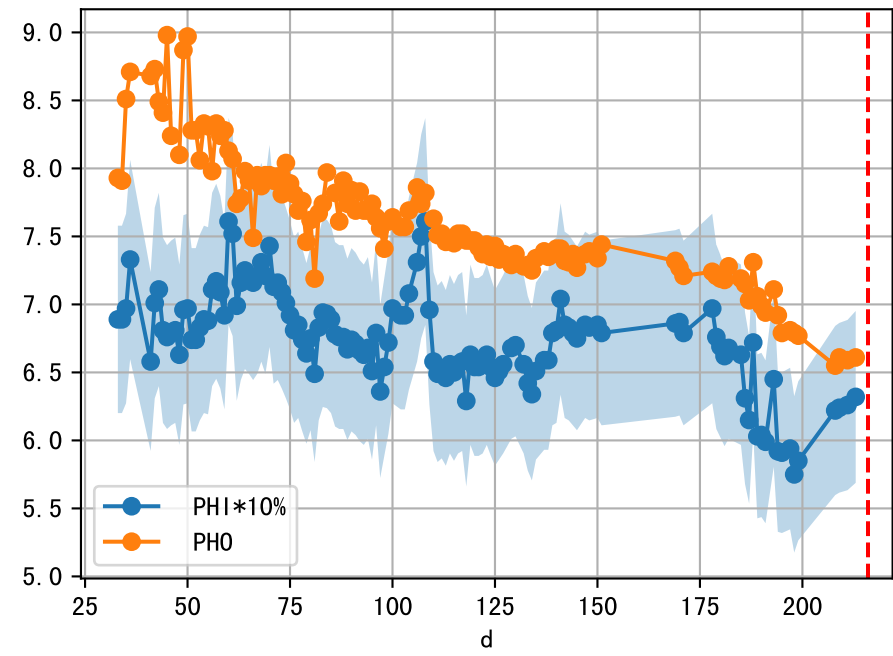
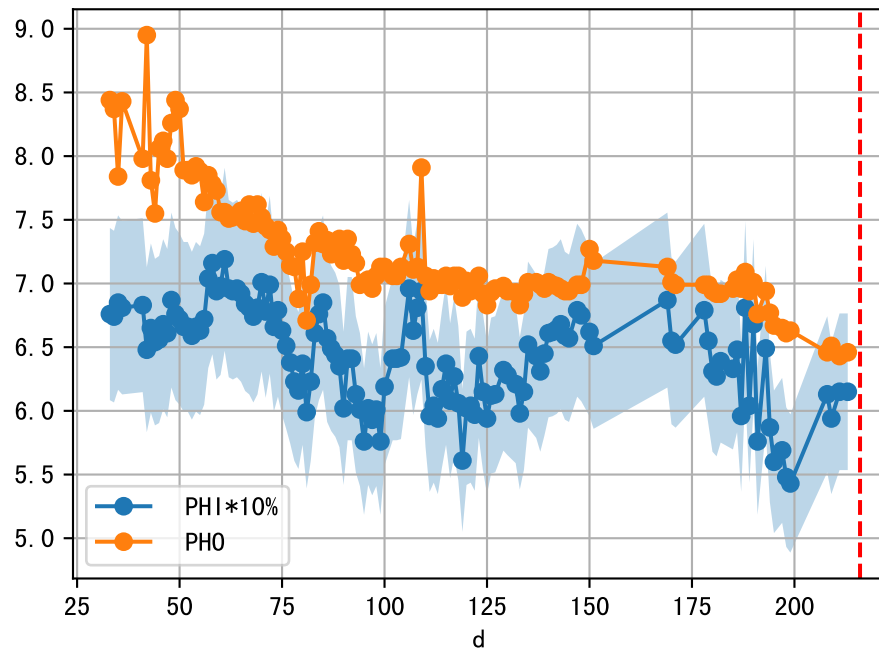
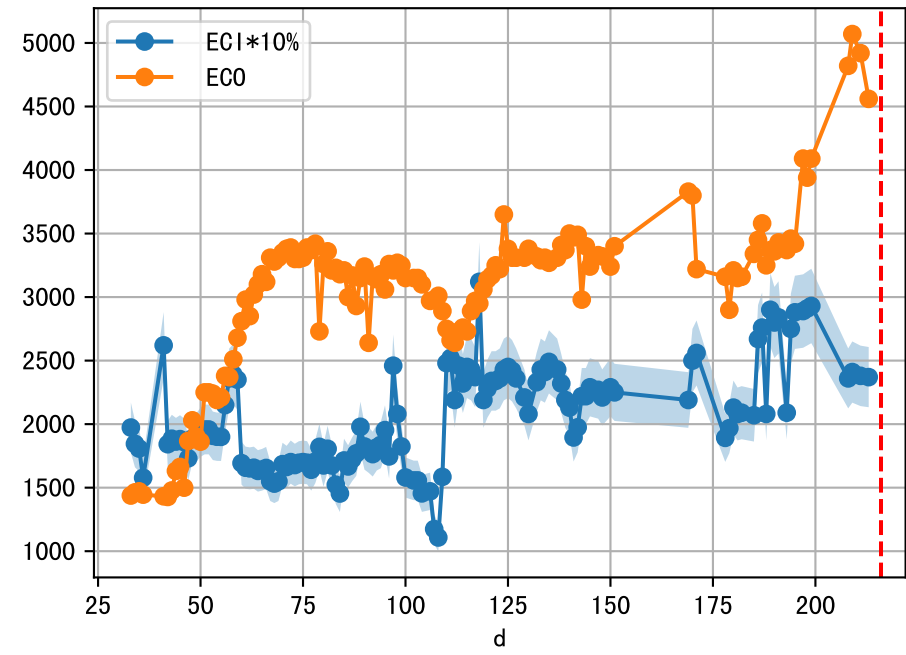




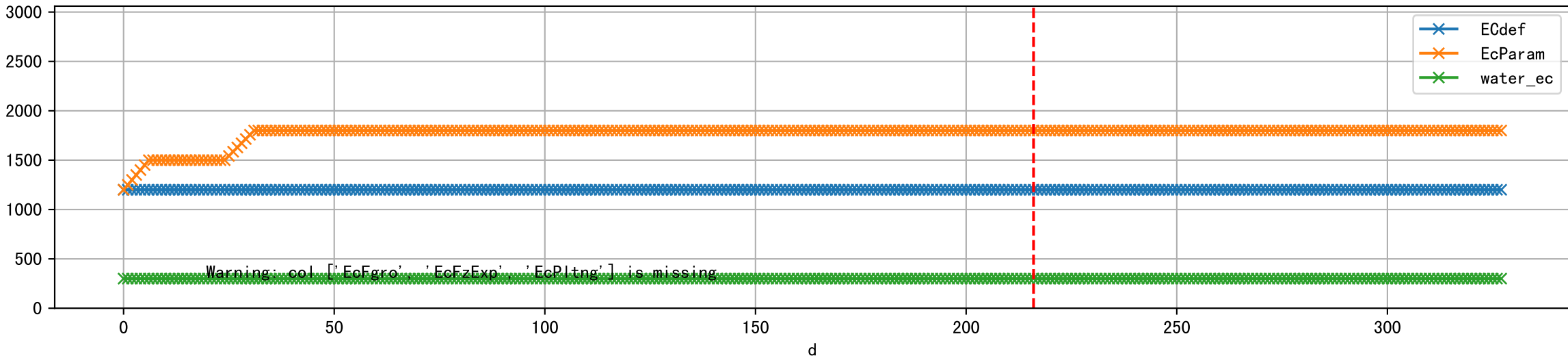
1 (fgArea = NA)



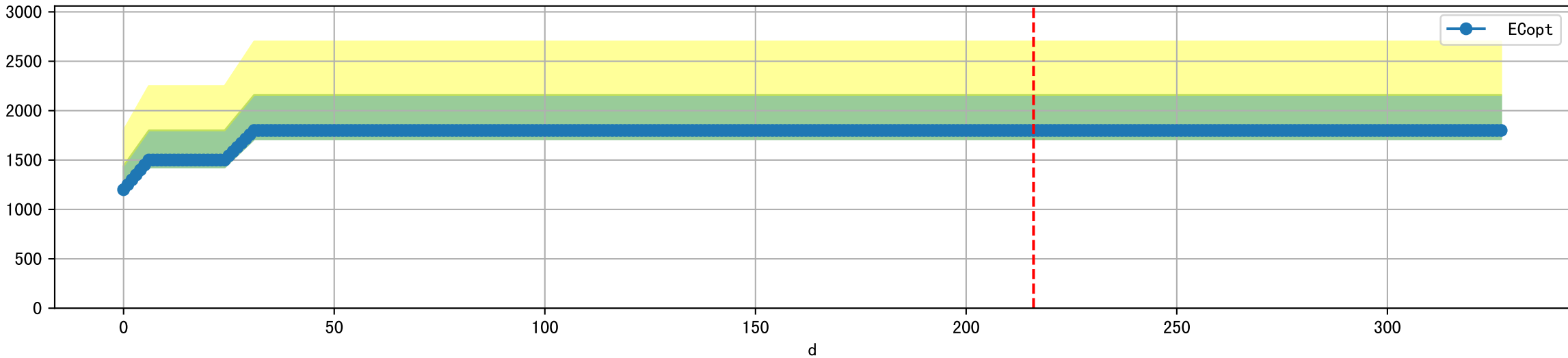
2 (fgArea = NA)



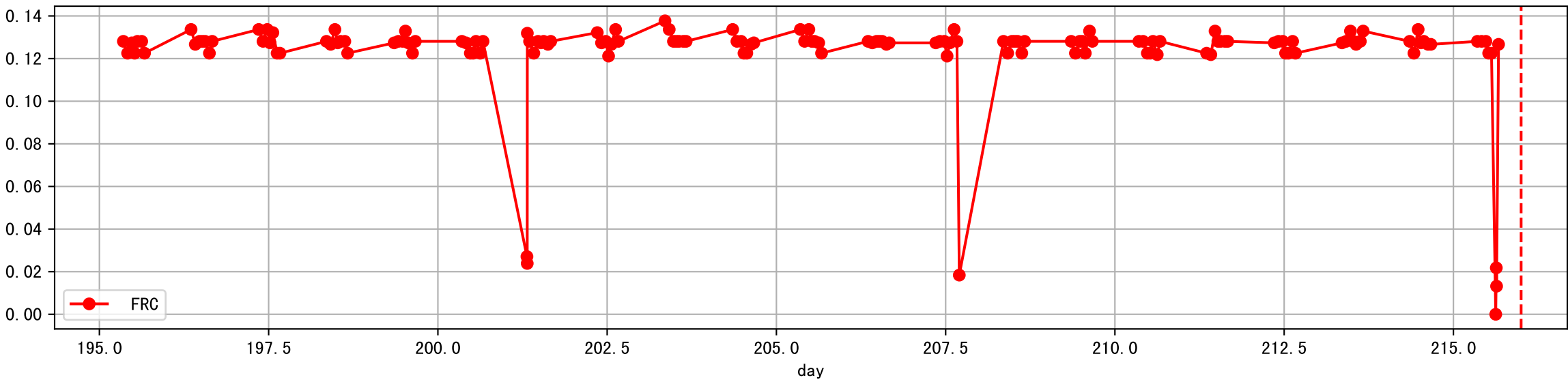
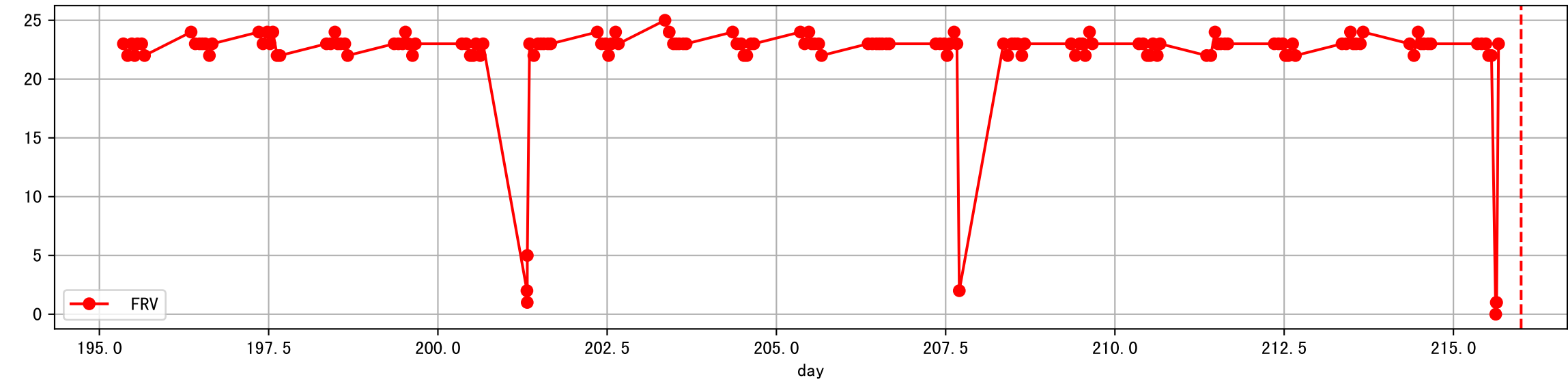
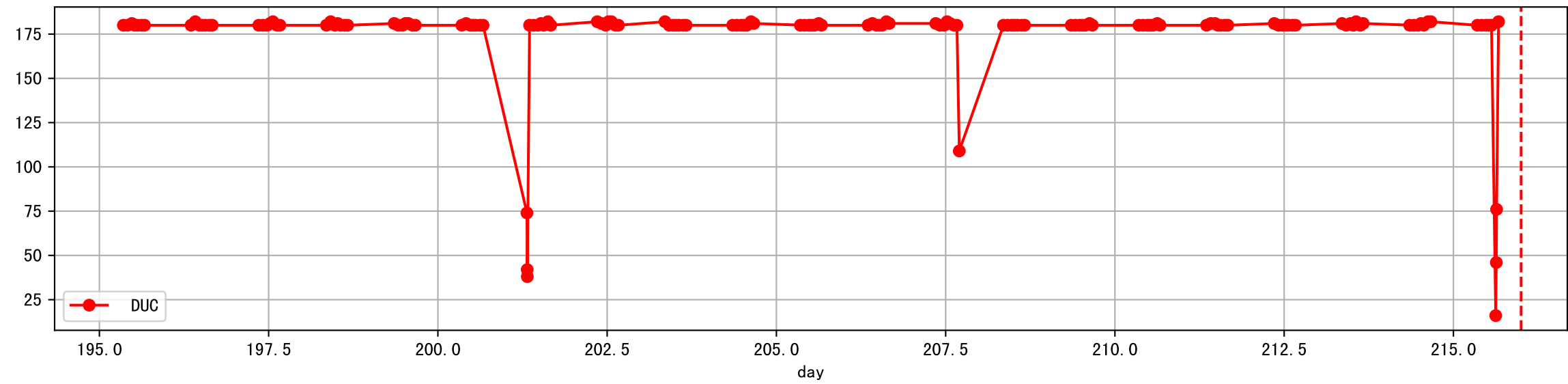
Plot [['EcFgro', 'EcFzExp', 'EcPltng', 'ECdef', 'EcParam', 'water_ec']]



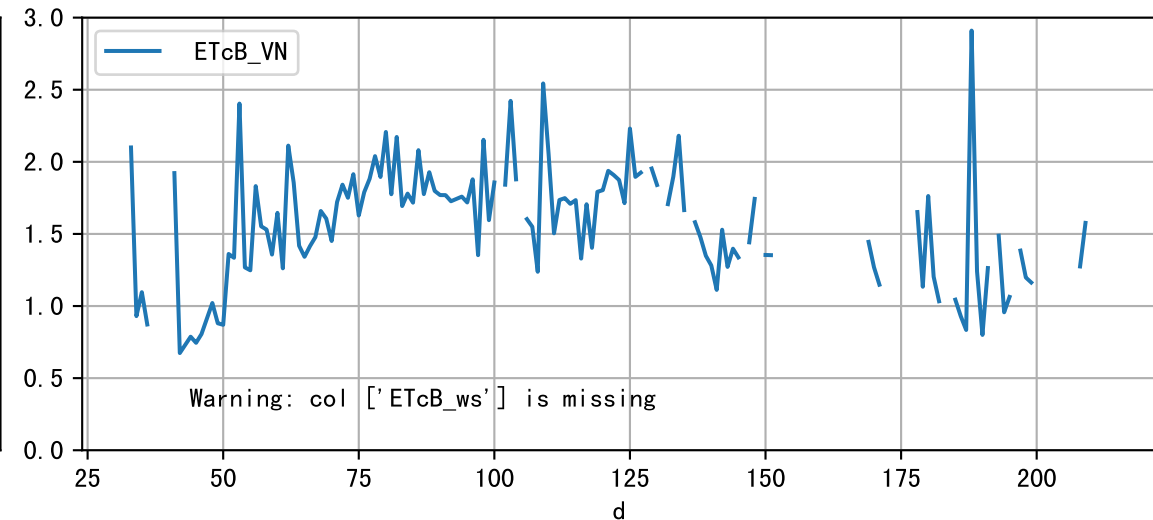
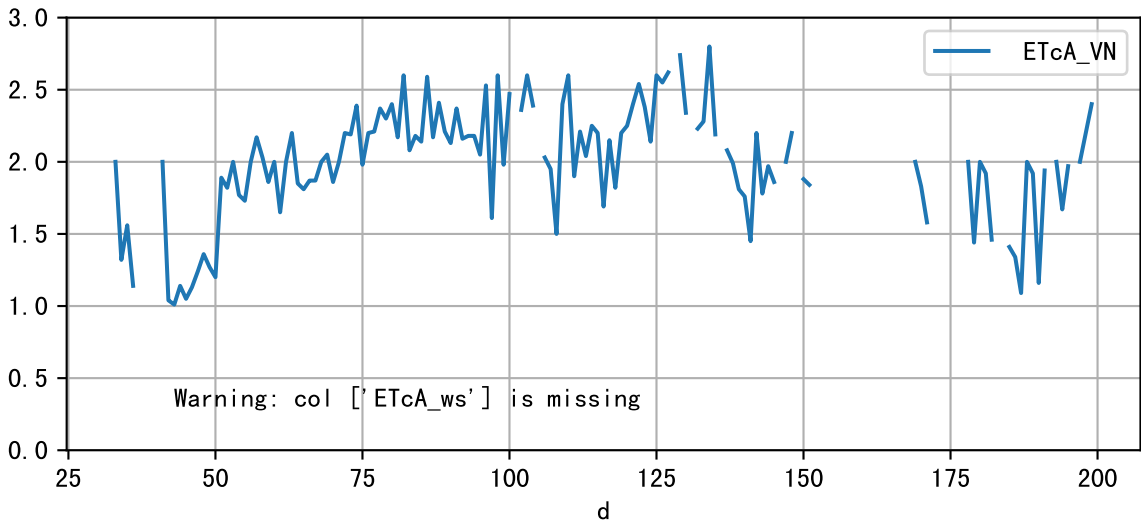
Plot [' ECopt']



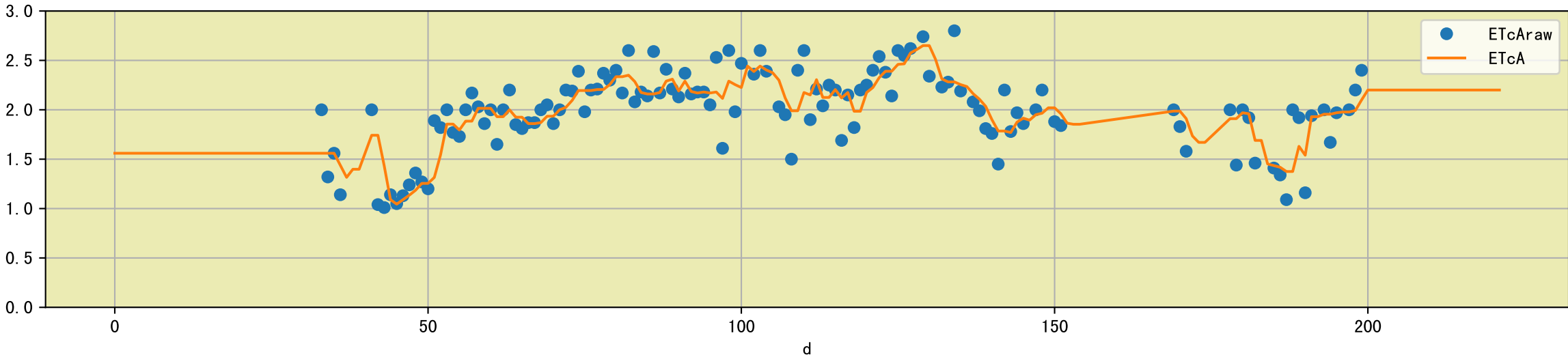
Plot Sensor and FgRec Detail



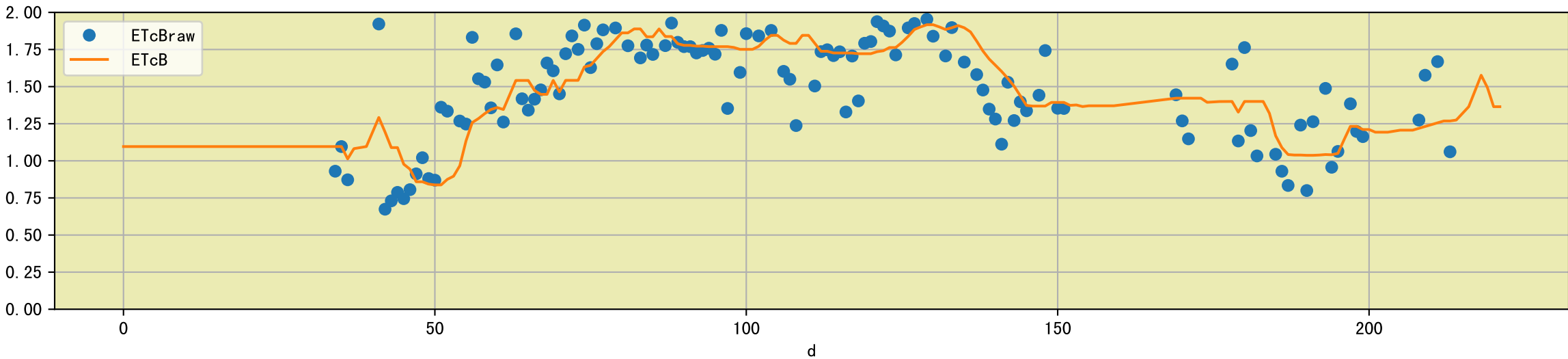
Plot [['ETcA_VN', 'ETcA_ws'], ['ETcB_VN', 'ETcB_ws']]

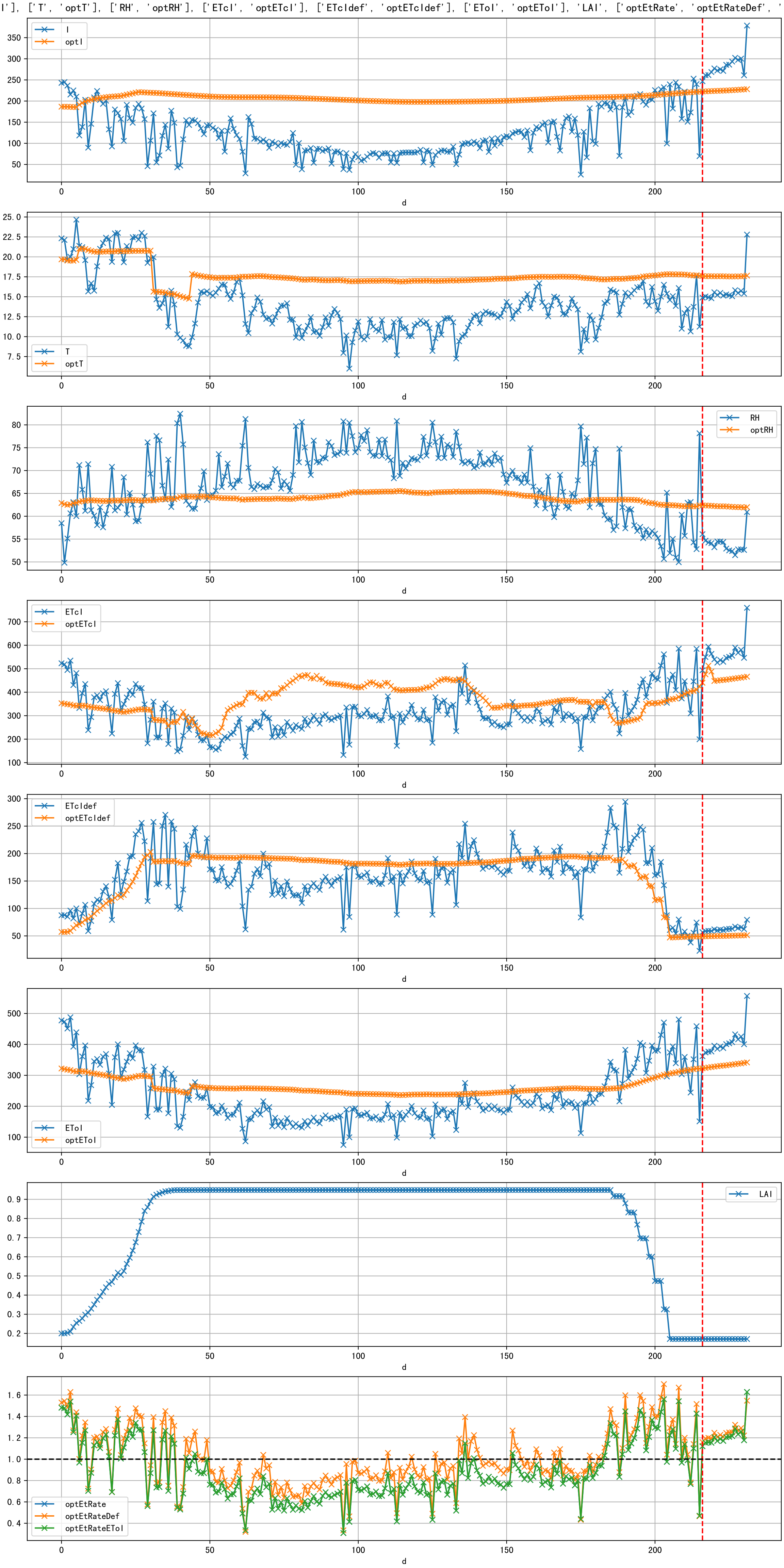


Plot [['ETcAraw:o', 'ETcA']]

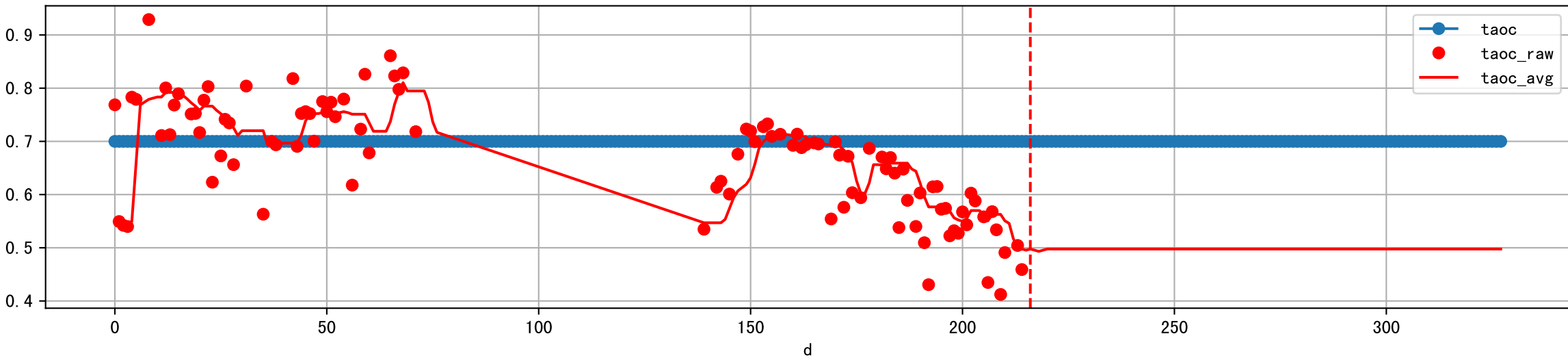


Plot [['ETcBraw:o', 'ETcB']]

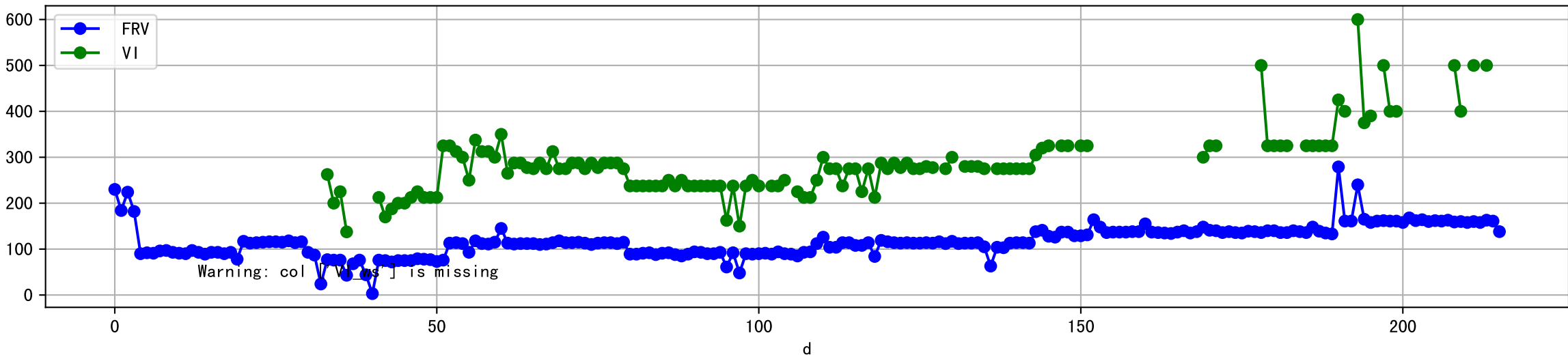




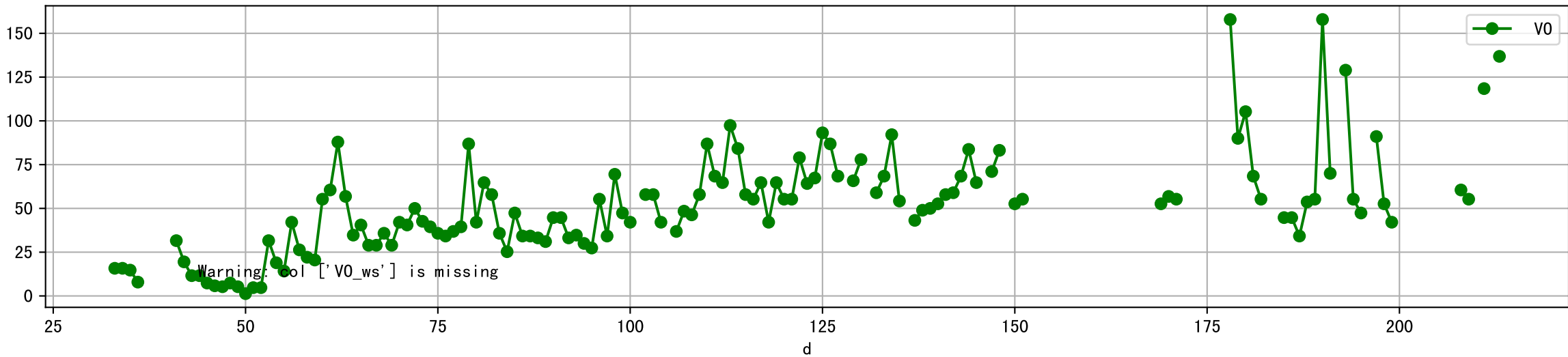
Plot [['taoc', 'taoc_raw:ro', 'taoc_avg:r-']]



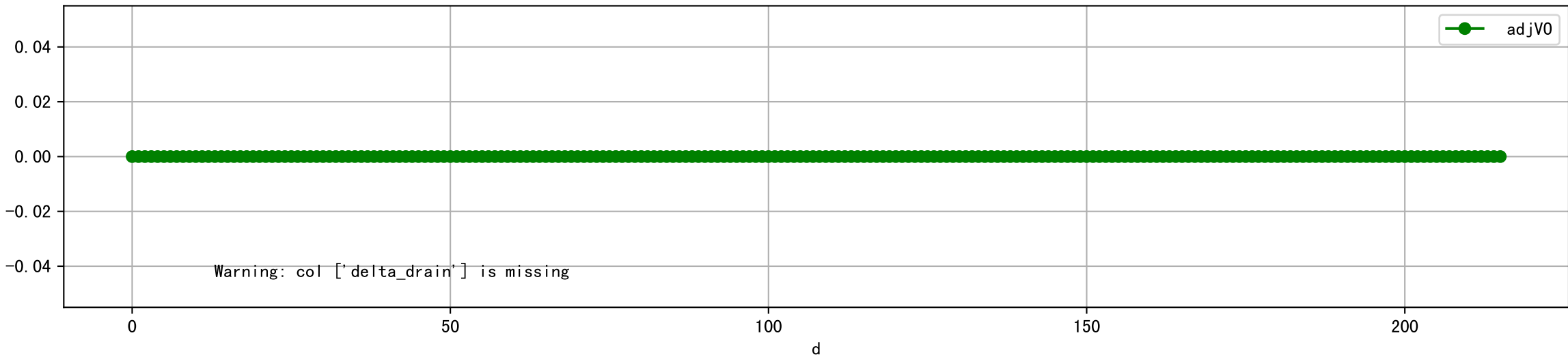
Plot [['FRV:b-o', 'VI_ws:r-o', 'VI:g-o']]



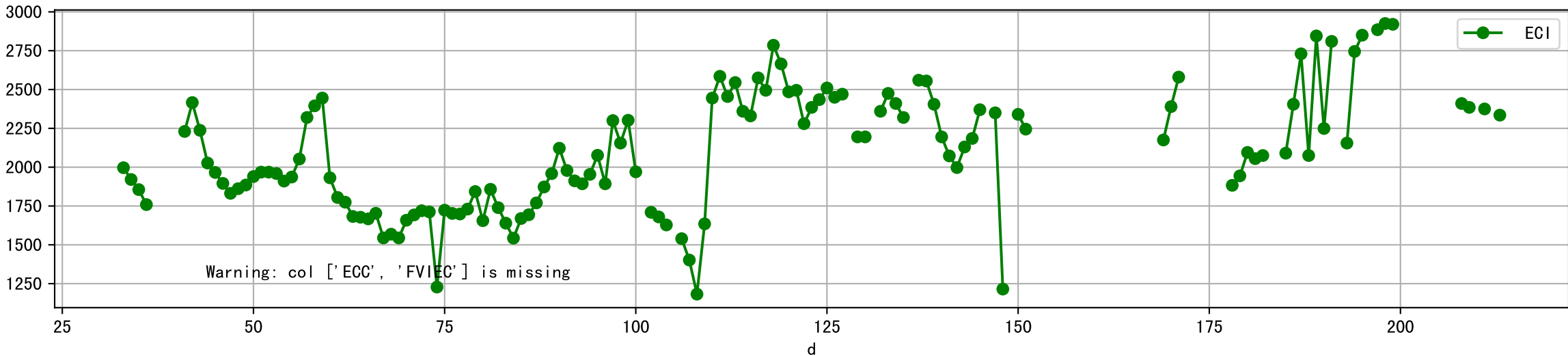
Plot [['V0_ws:r-o', 'V0:g-o']]



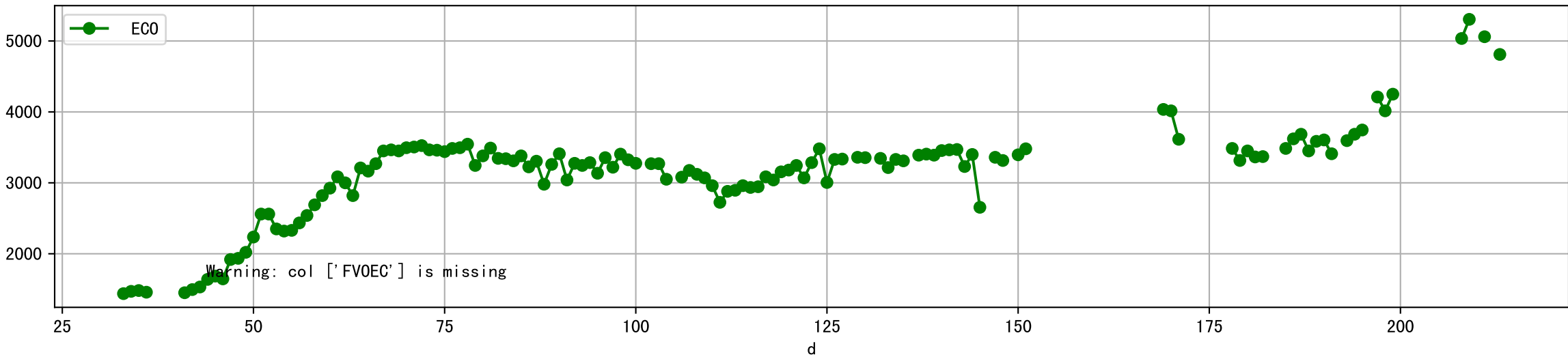
Plot [['delta_drain:ro', 'adjV0:g-o']]



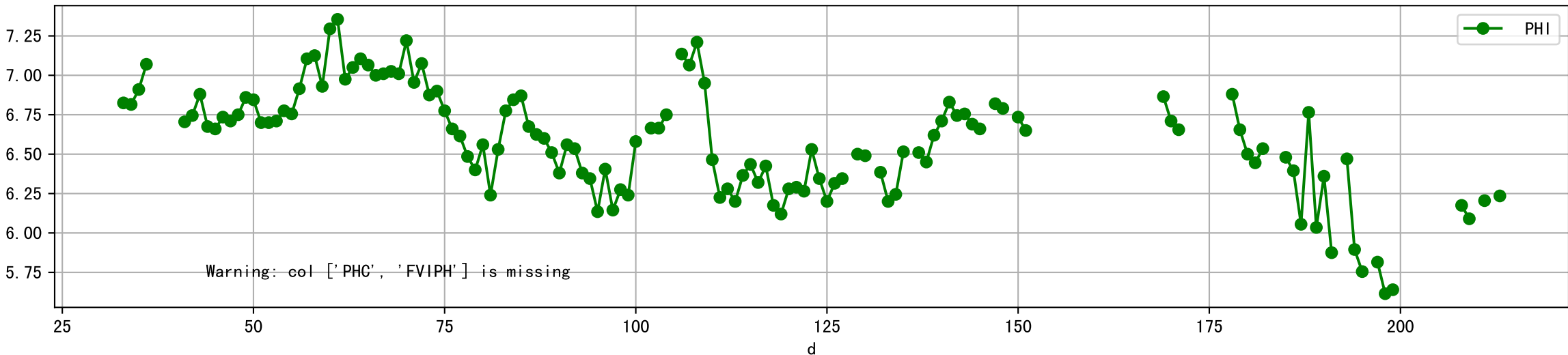
Plot [['ECC:b-o', 'FVIEC:r-o', 'ECI:g-o']]



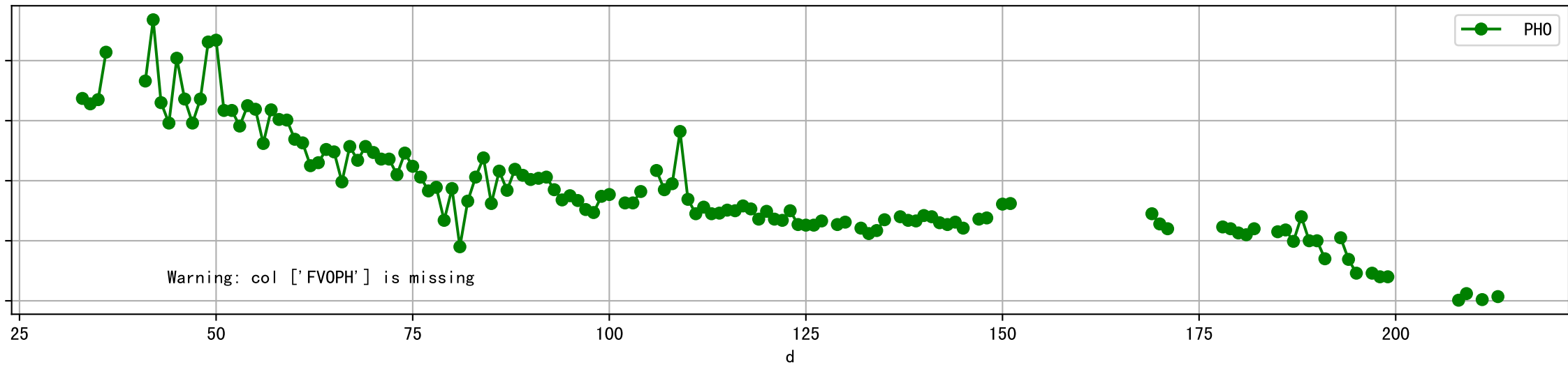
Plot [[' FVOEC:r-o', ' ECO:g-o']]



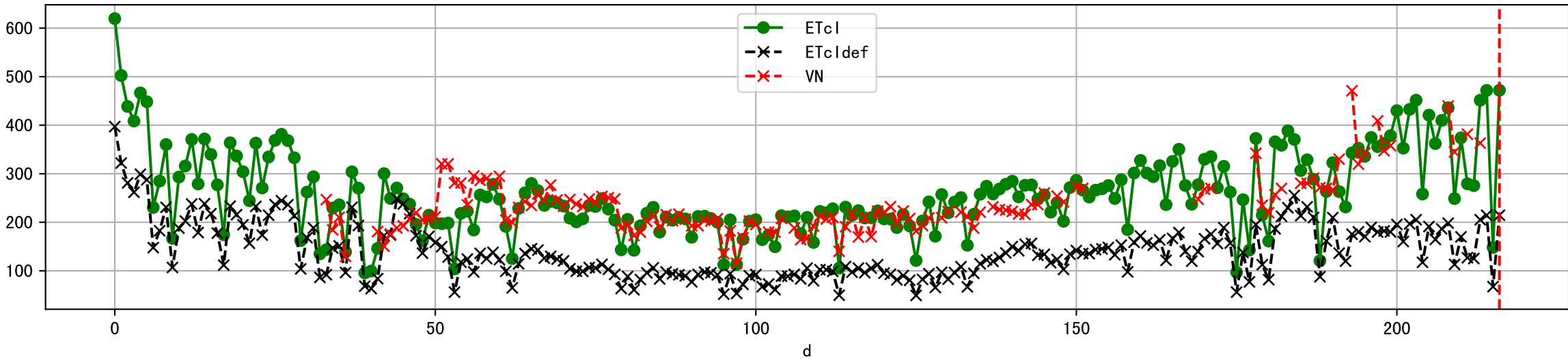
Plot [['PHC:b-o', 'FVIPH:r-o', 'PHI:g-o']]



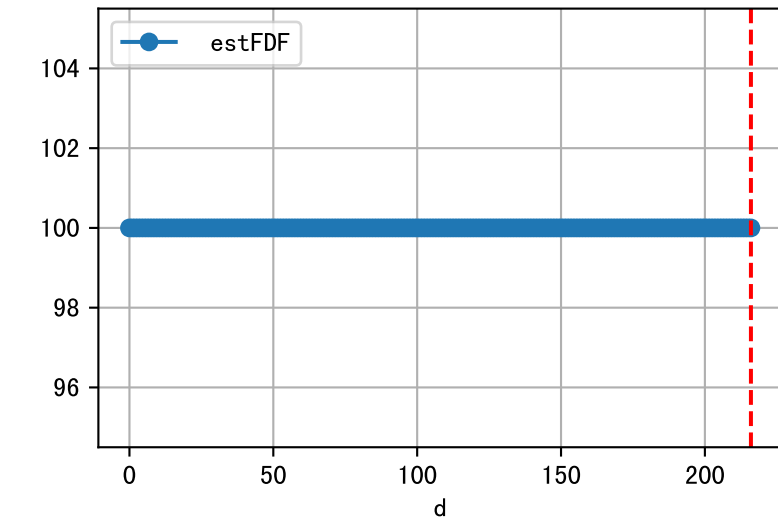
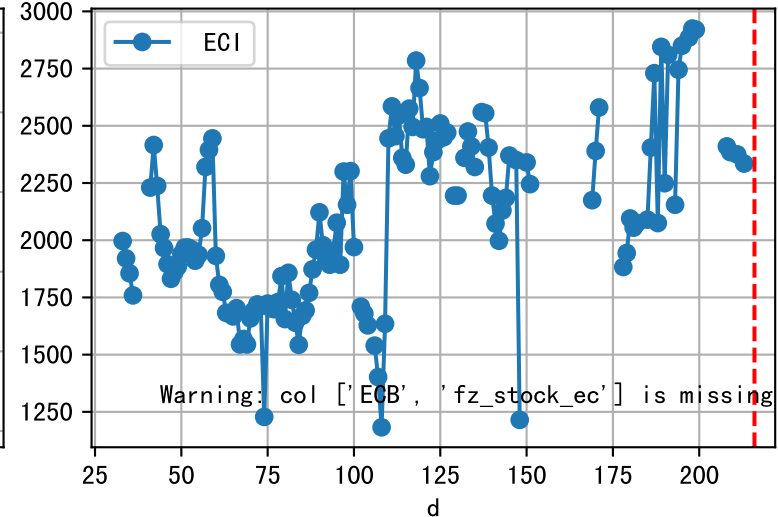
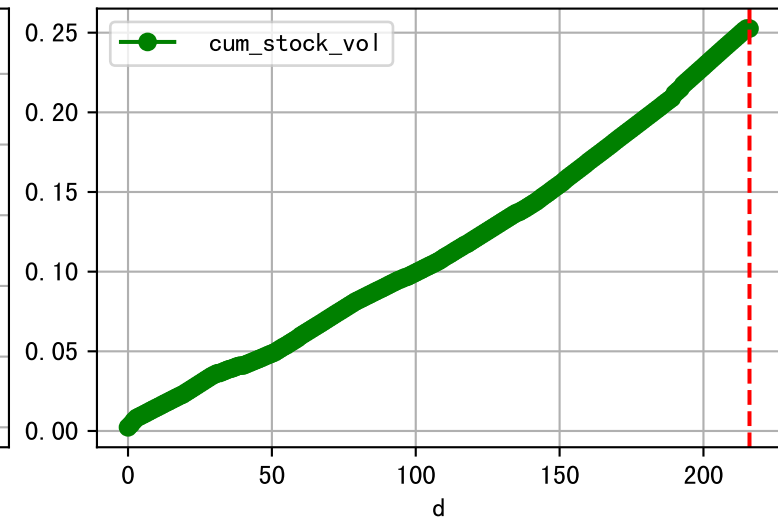
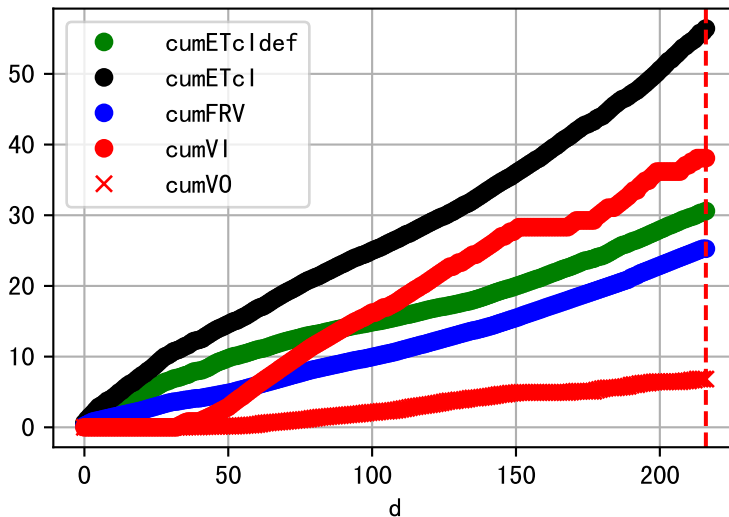
Plot [[' FVOPH:r-o' , ' PHO:g-o']]



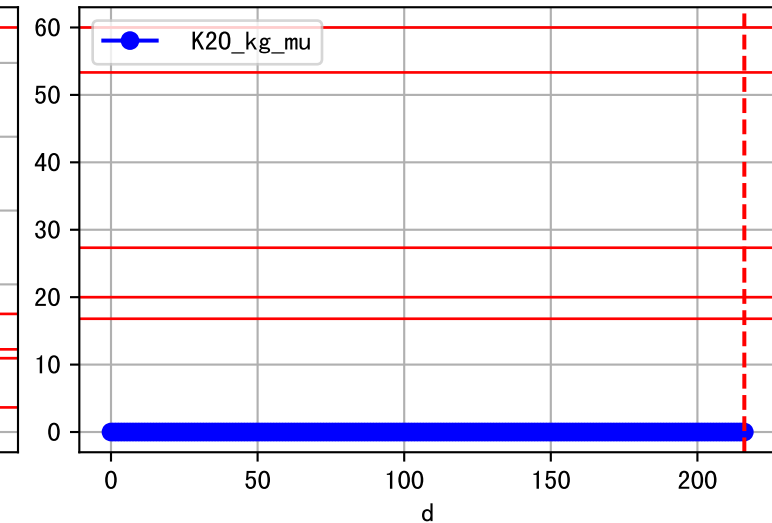
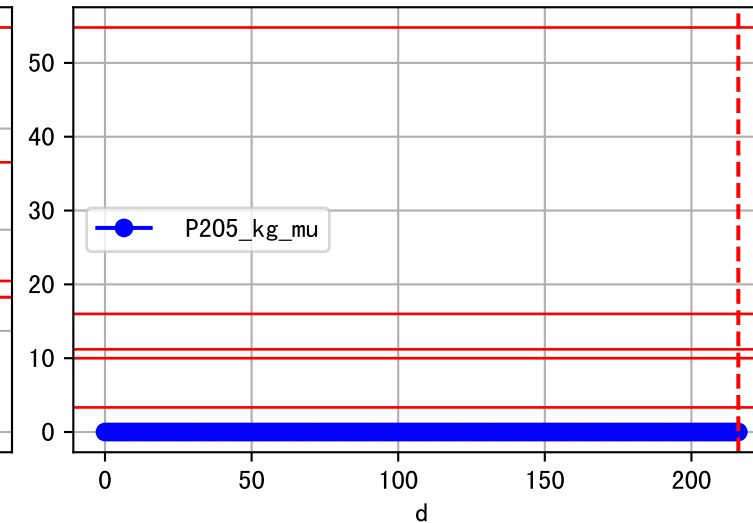
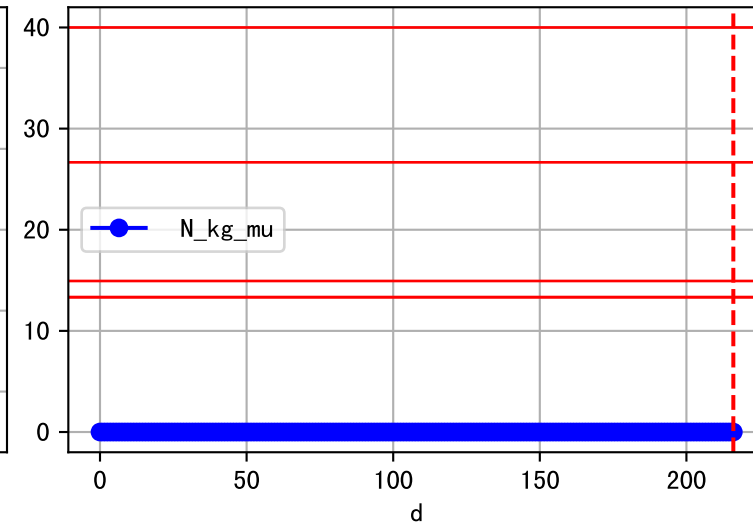
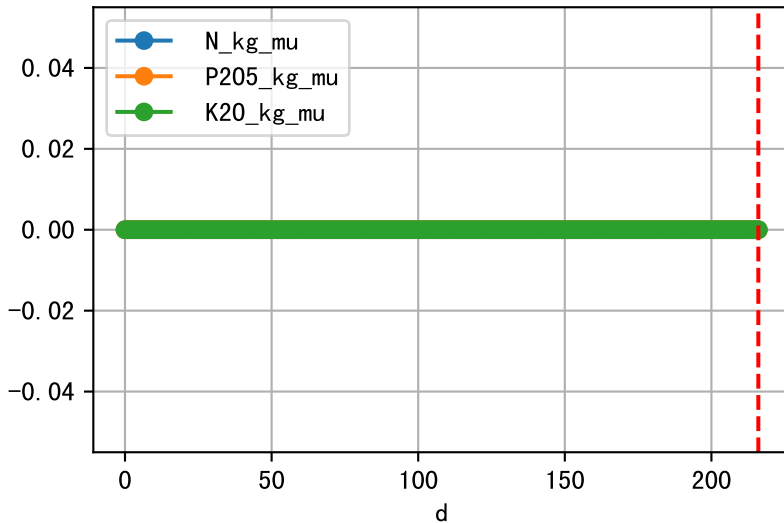
Plot ET/VN



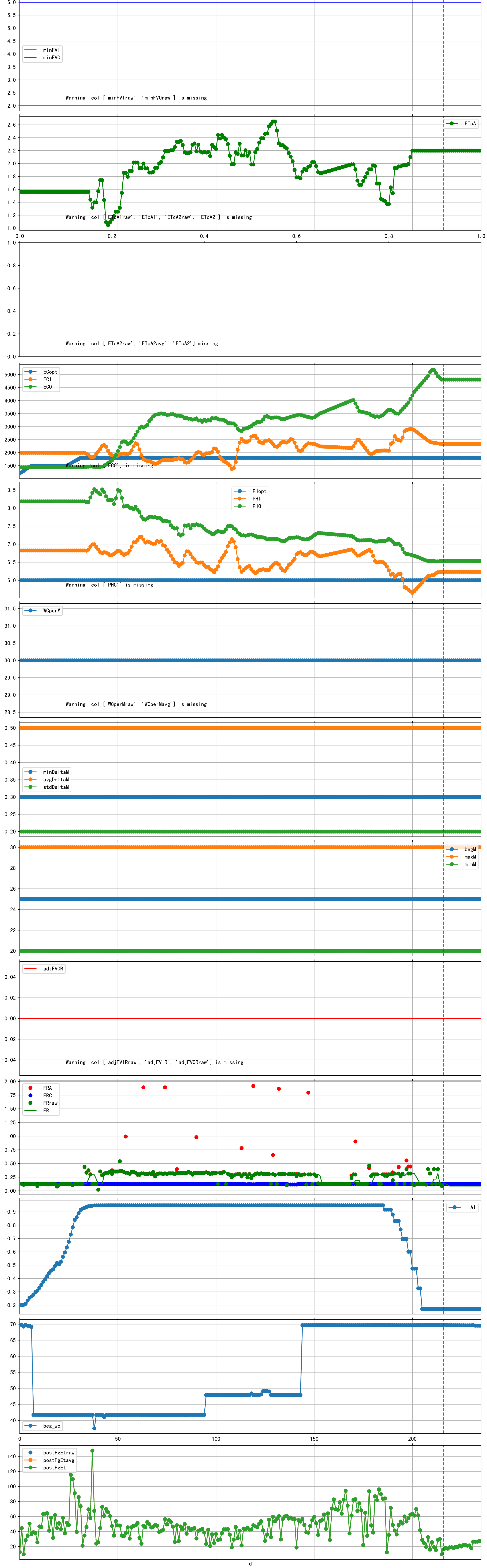
Plot Fv and fertilizer usage

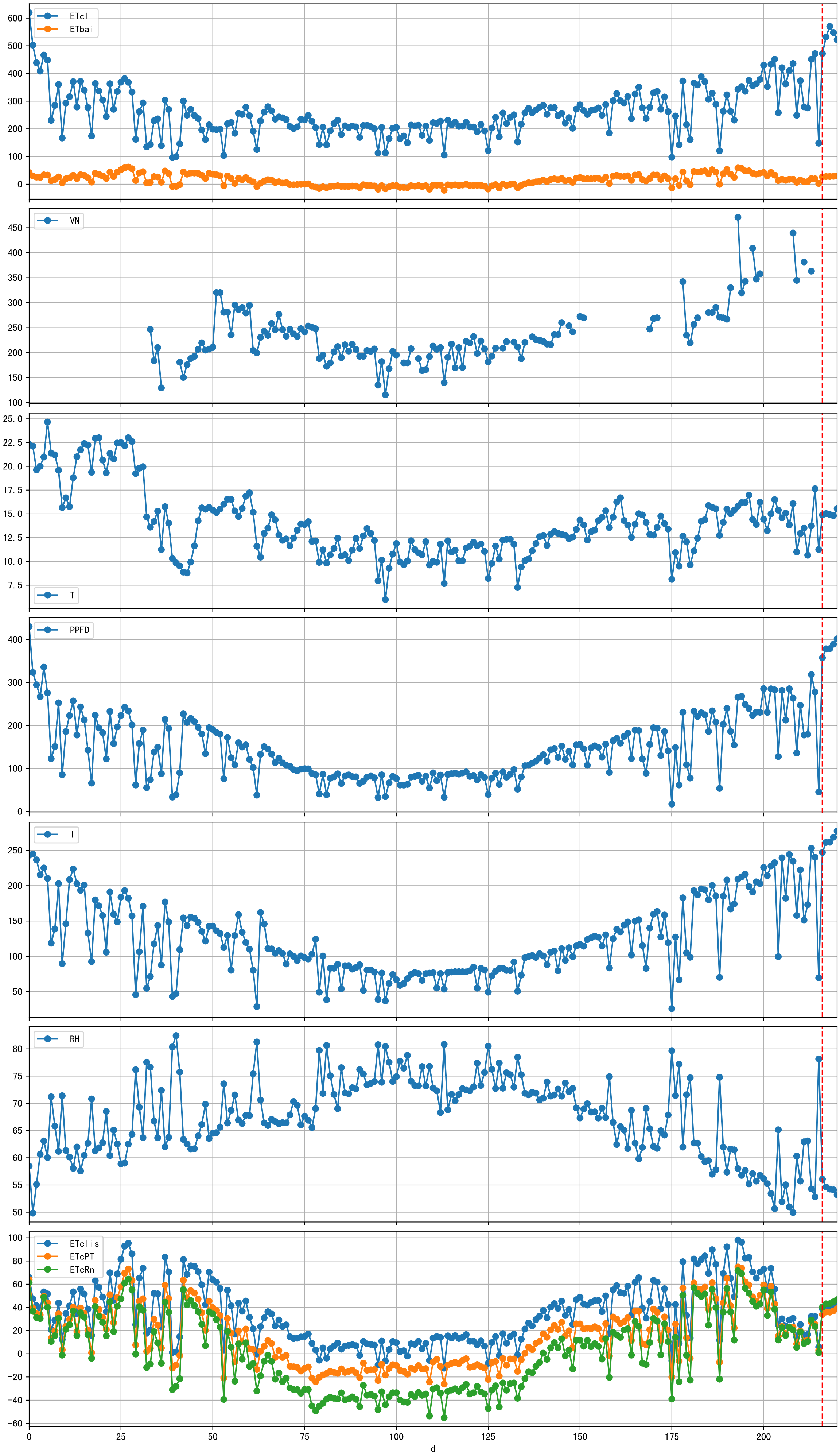


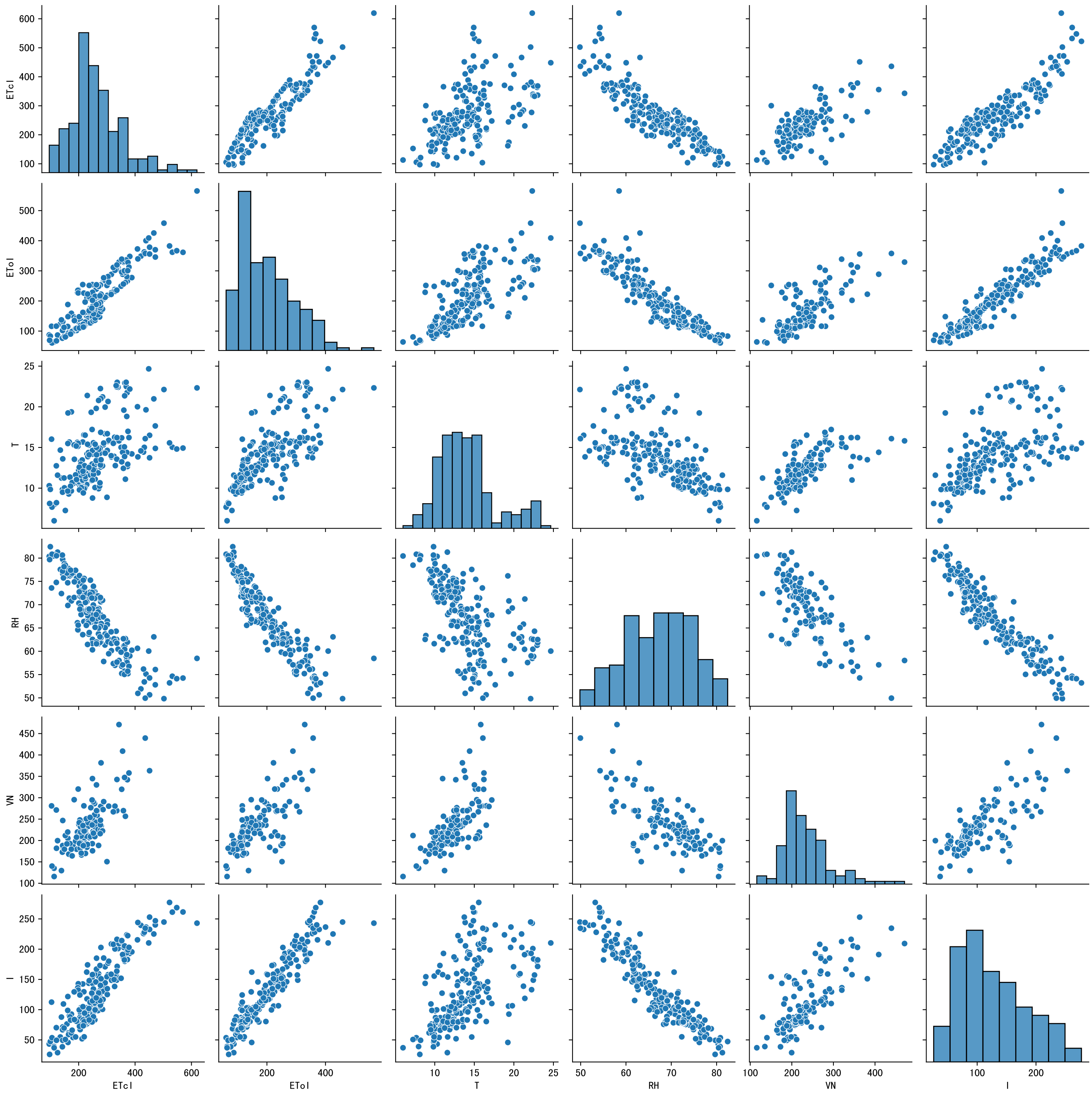
Fertilizer Range Source: kerleyL, kerleyH, UnivFL, TNAI, Haifa

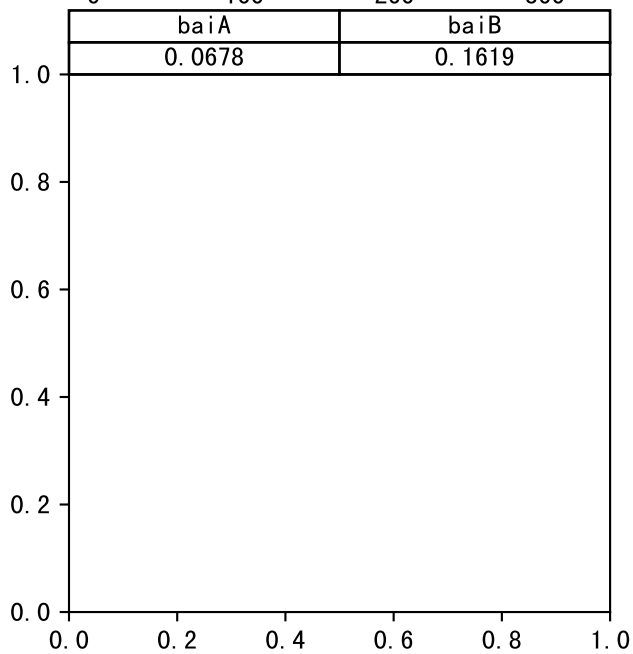
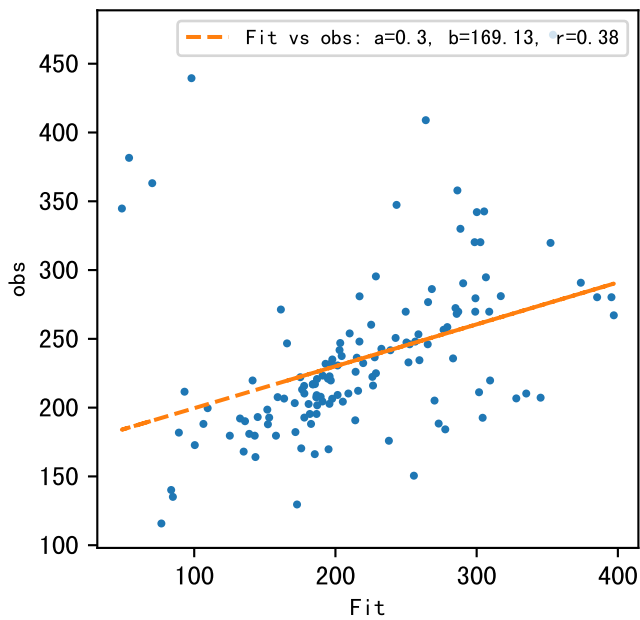
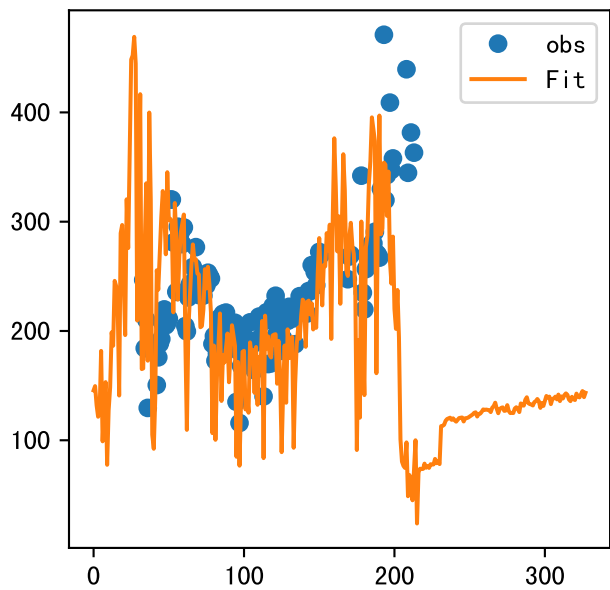


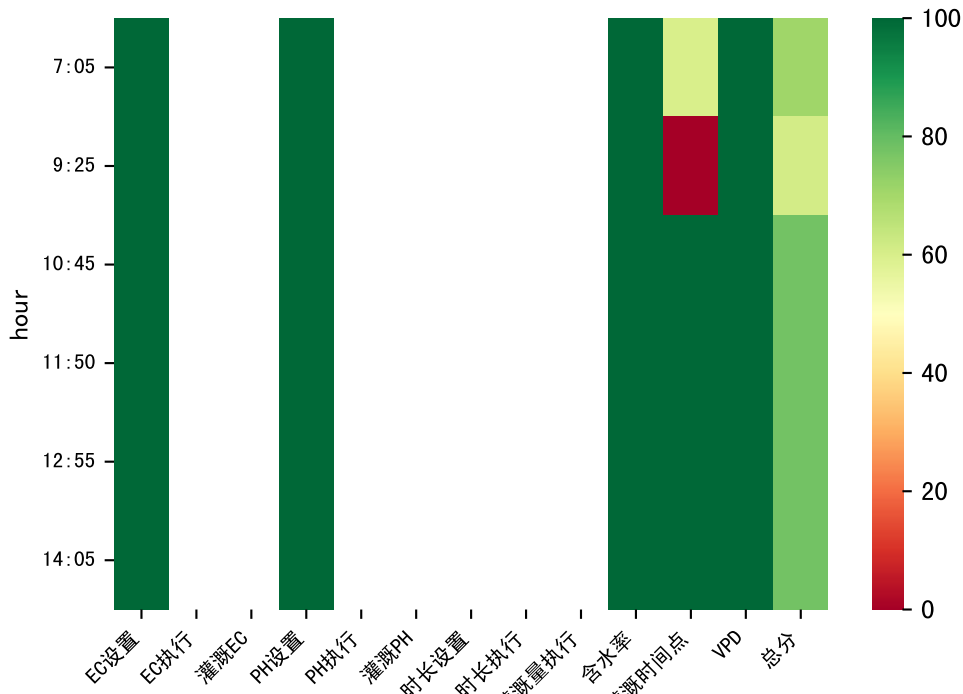
Trend plot forXX11_0



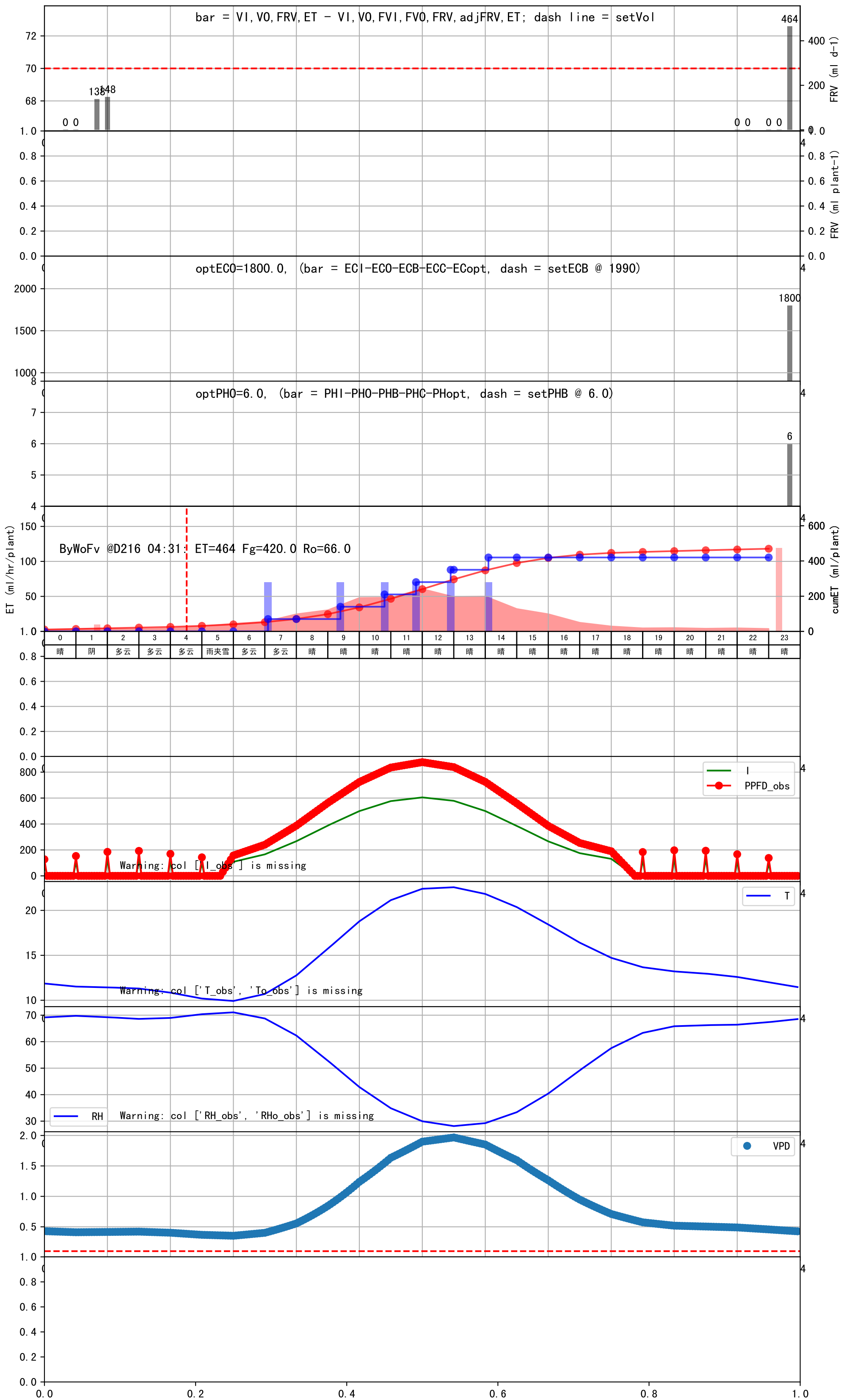


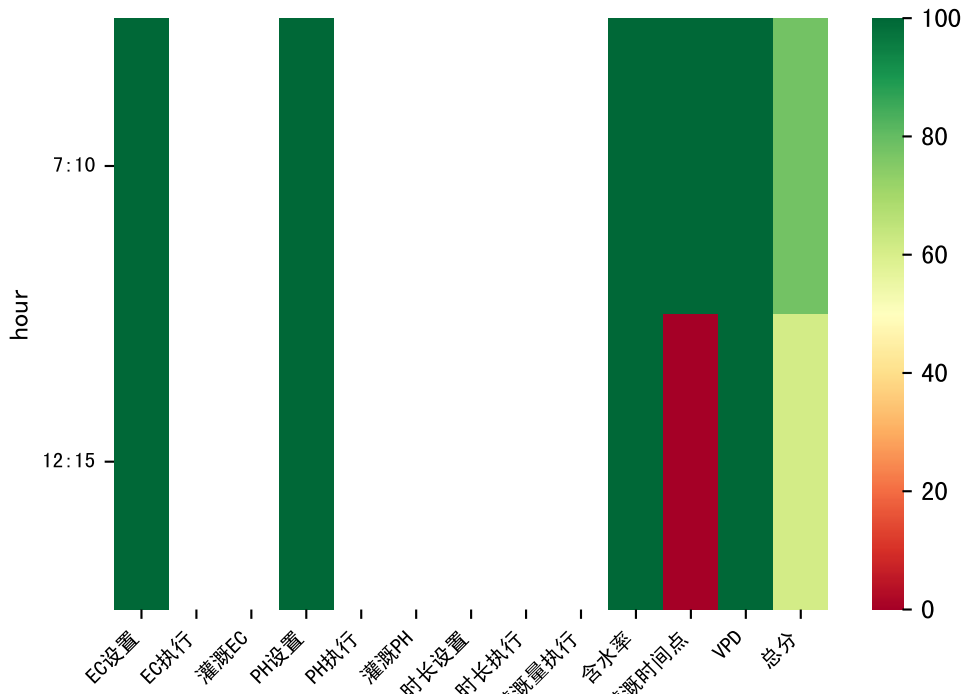






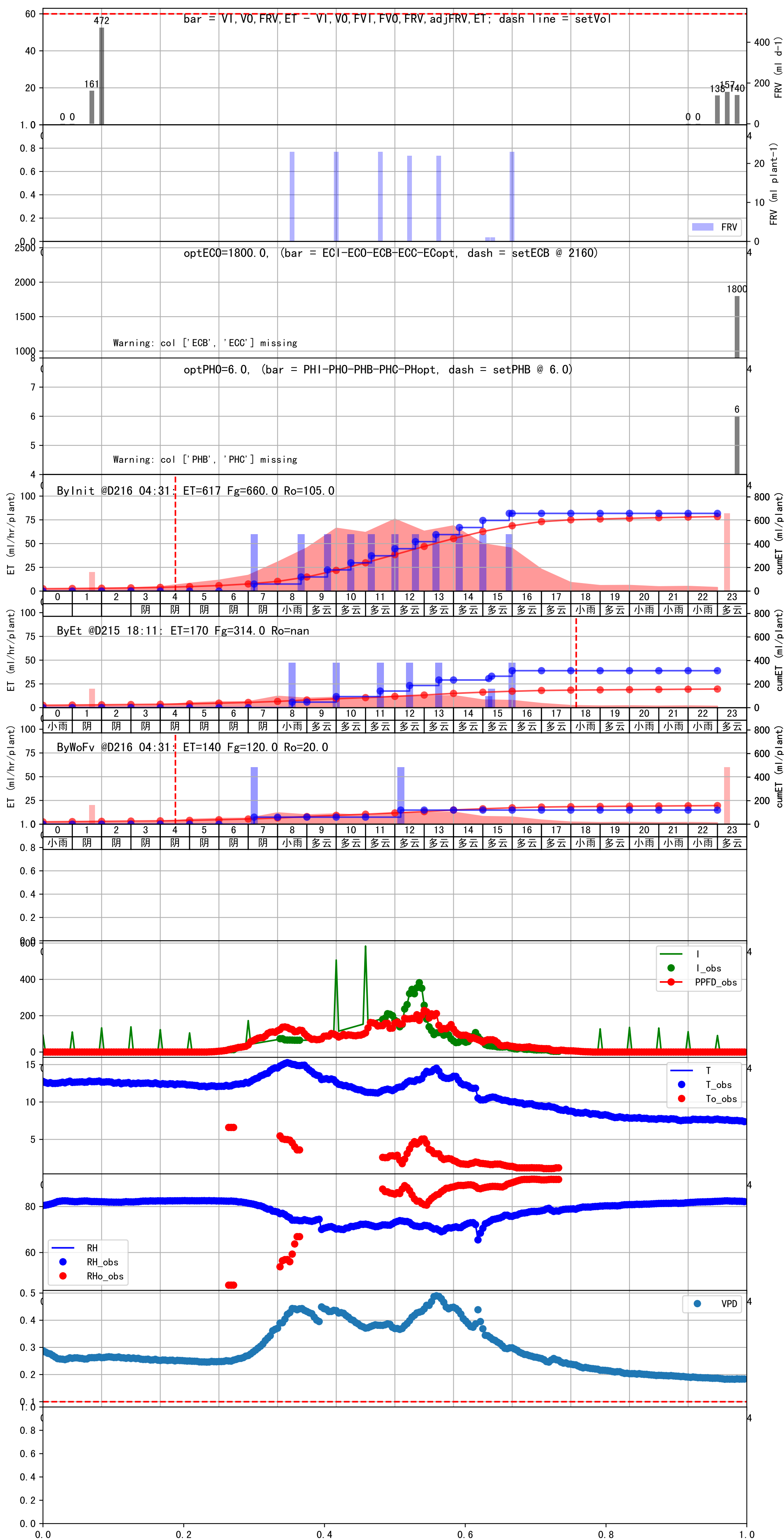
时间	灌溉时长(秒)	灌溉量(毫升/株)	灌溉总量(方/次)	天气	注释
07:05	538	70.0	0.698	多云	预期@07:05 手动 (未用传感器)
09:25	538	70.0	0.698	晴	预期@09:25 手动 (未用传感器)
10:45	538	70.0	0.698	晴	预期@10:45 手动 (未用传感器)
11:50	538	70.0	0.698	晴	预期@11:50 手动 (未用传感器)
12:55	538	70.0	0.698	晴	预期@12:55 手动 (未用传感器)
14:05	538	70.0	0.698	晴	预期@14:05 手动 (未用传感器)
总计	3228.0 (6次)	420.0			建议进液EC: 1990, PH: 6.0





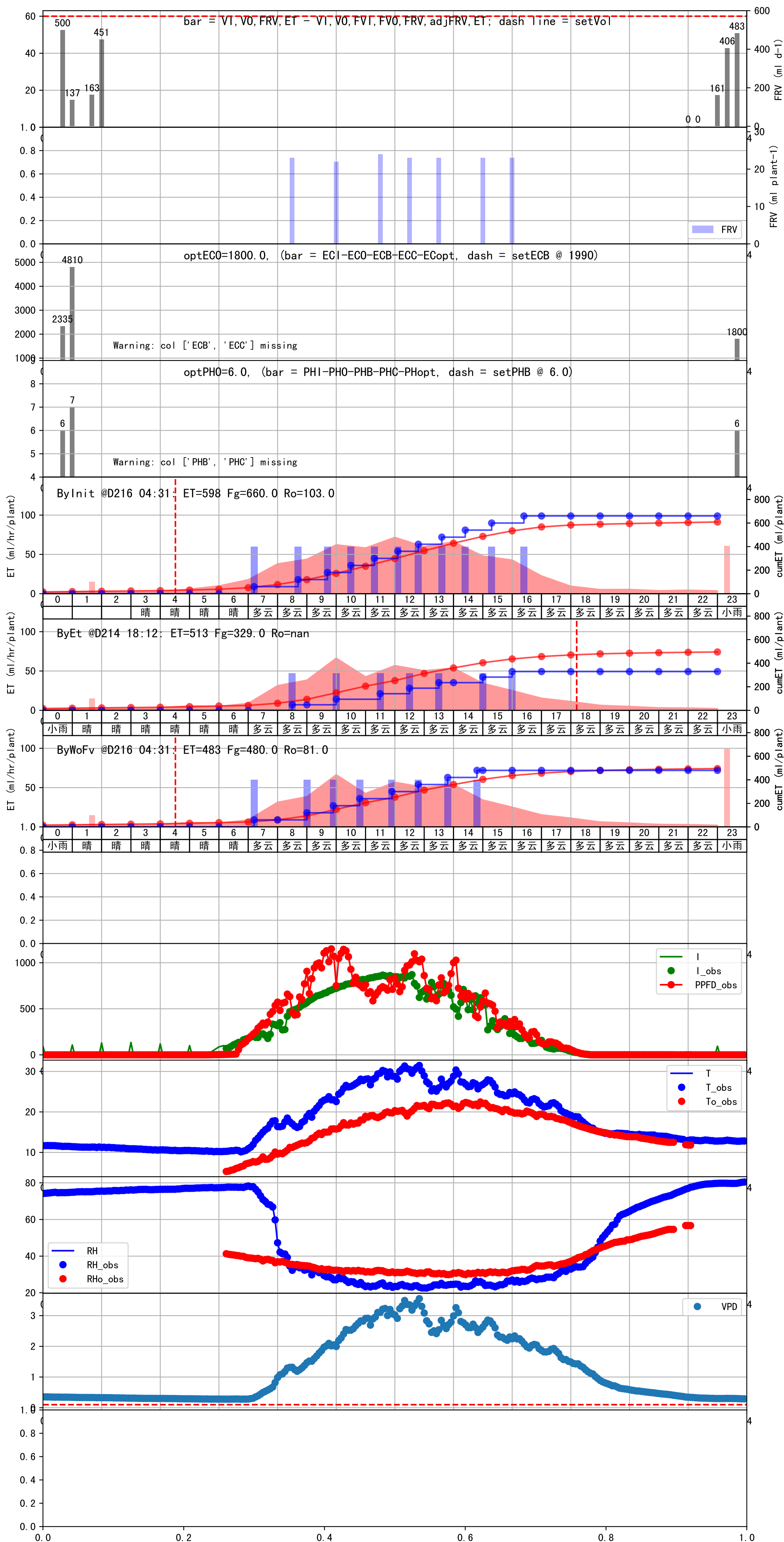
时间	灌溉时长(秒)	灌溉量(毫升/株)	灌溉总量(方/次)	天气	注释
07:10	180	60.0	0.598	阴	假设@07:10 手动 (未用传感器)
12:15	180	60.0	0.598	多云	假设@12:15 手动 (未用传感器)
总计	360.0 (2次)	120.0			建议进液EC: 2160, PH: 6.0

滴头平均流速偏小 (0.13 vs def 0.5), 请检查
 上次灌溉时长未按模型建议 (182 vs 462.0)
 默认实际灌溉24.0 ml.



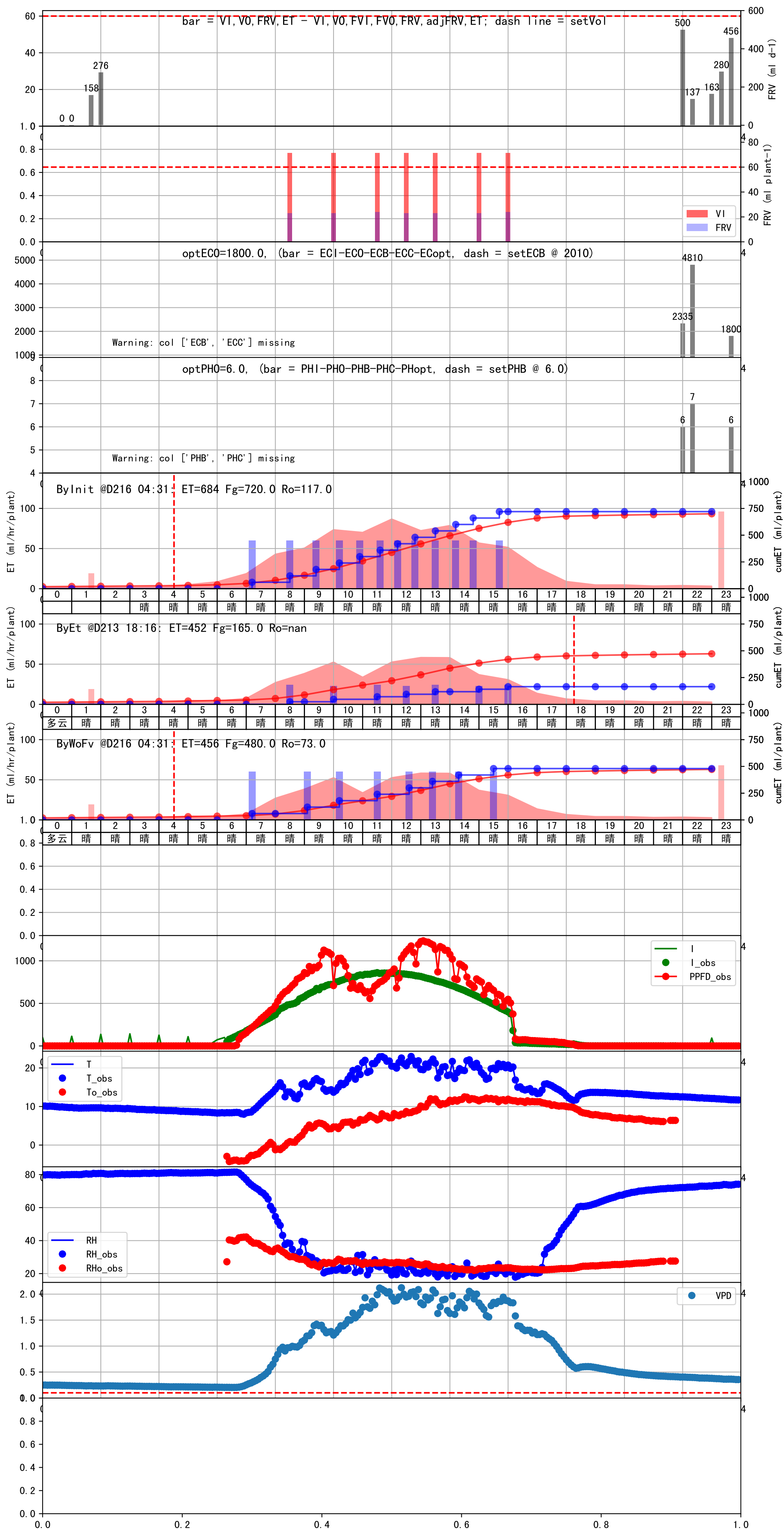
时间	灌溉时长(秒)	灌溉量(毫升/株)	灌溉总量(方/次)	天气	注释
07:10	180	60.0	0.598	多云	假设@07:10 手动 (未用传感器)
09:00	180	60.0	0.598	多云	假设@09:00 手动 (未用传感器)
09:55	180	60.0	0.598	多云	假设@09:55 手动 (未用传感器)
10:50	180	60.0	0.598	多云	假设@10:50 手动 (未用传感器)
11:55	180	60.0	0.598	多云	假设@11:55 手动 (未用传感器)
12:45	180	60.0	0.598	多云	假设@12:45 手动 (未用传感器)
13:45	180	60.0	0.598	多云	假设@13:45 手动 (未用传感器)
14:45	180	60.0	0.598	多云	假设@14:45 手动 (未用传感器)
总计	1440.0 (8次)	480.0			建议进液EC: 1990, PH: 6.0

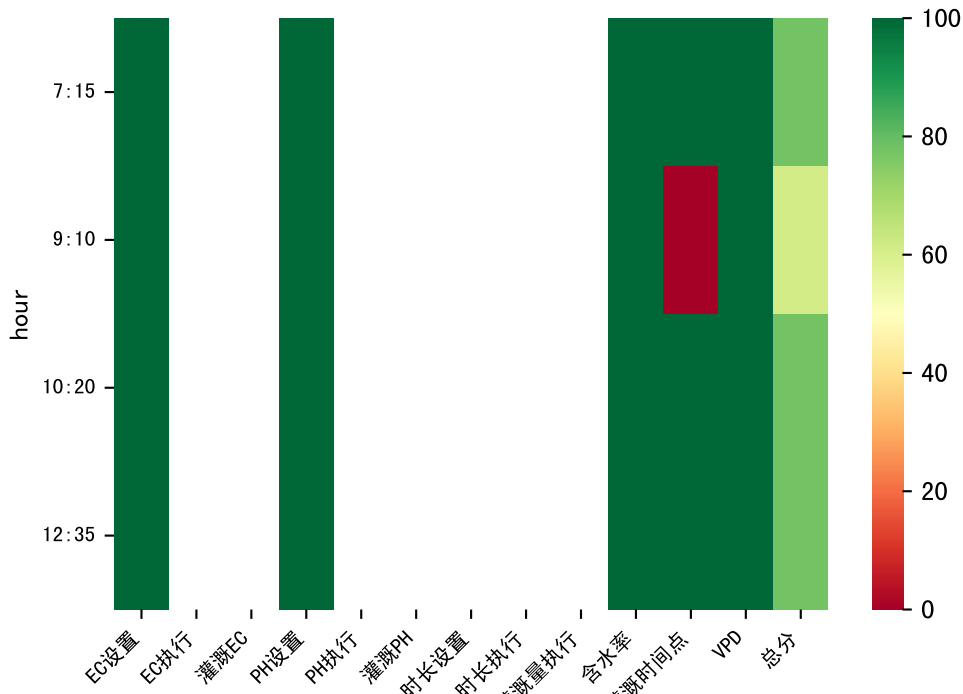
滴头平均流速偏小 (0.13 vs def 0.5), 请检查
 施肥机灌溉量与预期值不符 (23.0 : 58.0), 可能水表需要校准
 默认实际灌溉58.0 ml.



时间	灌溉时长(秒)	灌溉量(毫升/株)	灌溉总量(方/次)	天气	注释
07:15	181	60.0	0.598	晴	假设@07:15 手动 (未用传感器)
09:05	181	60.0	0.598	晴	假设@09:05 手动 (未用传感器)
10:10	181	60.0	0.598	晴	假设@10:10 手动 (未用传感器)
11:30	181	60.0	0.598	晴	假设@11:30 手动 (未用传感器)
12:35	181	60.0	0.598	晴	假设@12:35 手动 (未用传感器)
13:25	181	60.0	0.598	晴	假设@13:25 手动 (未用传感器)
14:20	181	60.0	0.598	晴	假设@14:20 手动 (未用传感器)
15:30	181	60.0	0.598	晴	假设@15:30 手动 (未用传感器)
总计	1448.0 (8次)	480.0			建议进液EC: 2010, PH: 6.0

滴头平均流速偏小 (0.13 vs def 0.5), 请检查
 施肥机灌溉量与预期值不符 (24.0 : 40.0), 可能水表需要校准
 上次灌溉时长未按模型建议 (181 vs 273.0)
 默认实际灌溉40.0 ml.





时间	灌溉时长(秒)	灌溉量(毫升/株)	灌溉总量(方/次)	天气	注释
07:15	181	60.0	0.598	多云	假设@07:15 手动 (未用传感器)
09:10	181	60.0	0.598	多云	假设@09:10 手动 (未用传感器)
10:20	181	60.0	0.598	多云	假设@10:20 手动 (未用传感器)
12:35	181	60.0	0.598	多云	假设@12:35 手动 (未用传感器)
总计	724.0 (4次)	240.0			建议进液EC: 2160, PH: 6.0

滴头平均流速偏小 (0.13 vs def 0.5), 请检查
 施肥机灌溉量与预期值不符 (22.0 : 40.0), 可能水表需要校准
 上次灌溉时长未按模型建议 (180 vs 273.0)
 默认实际灌溉40.0 ml.

