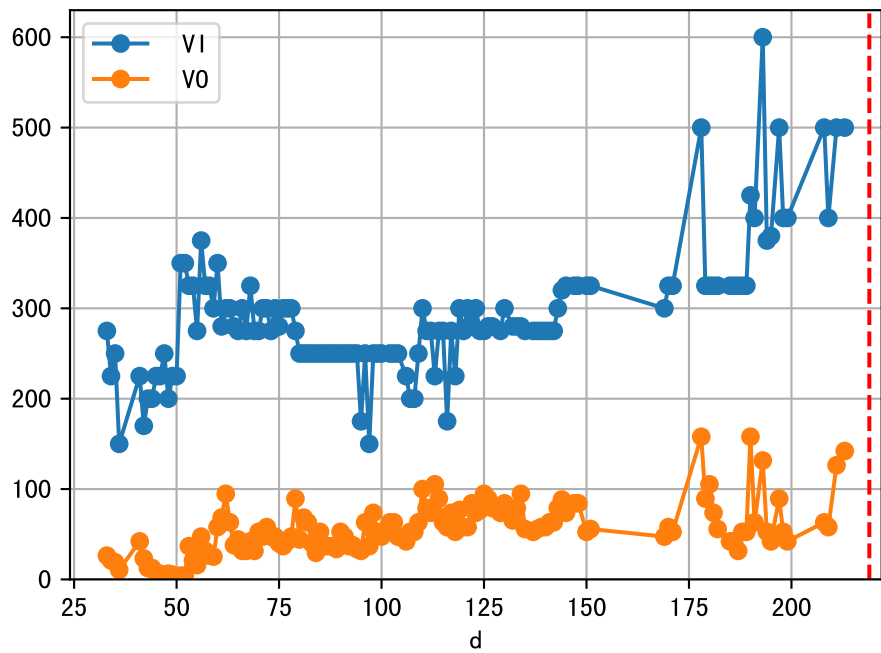
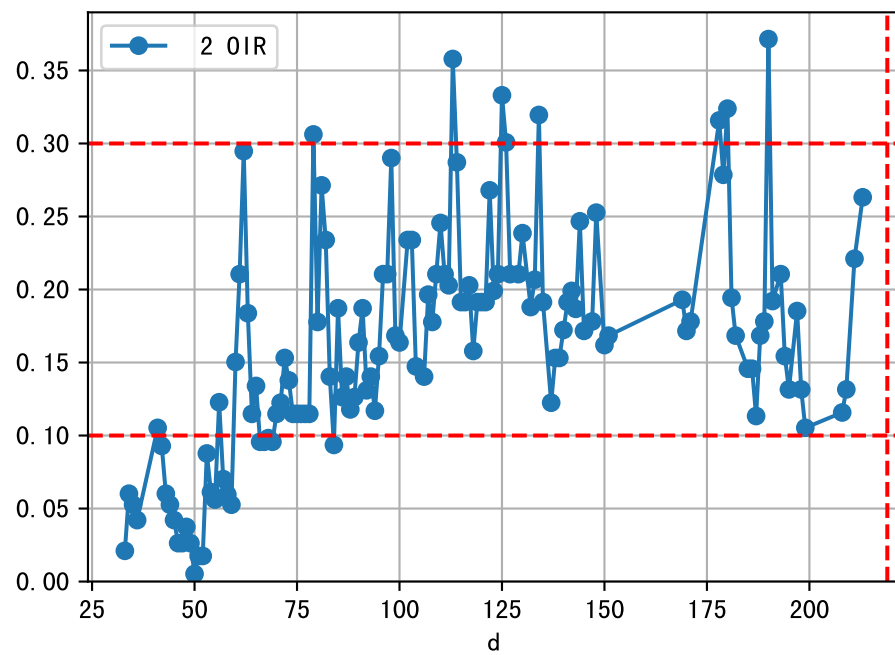
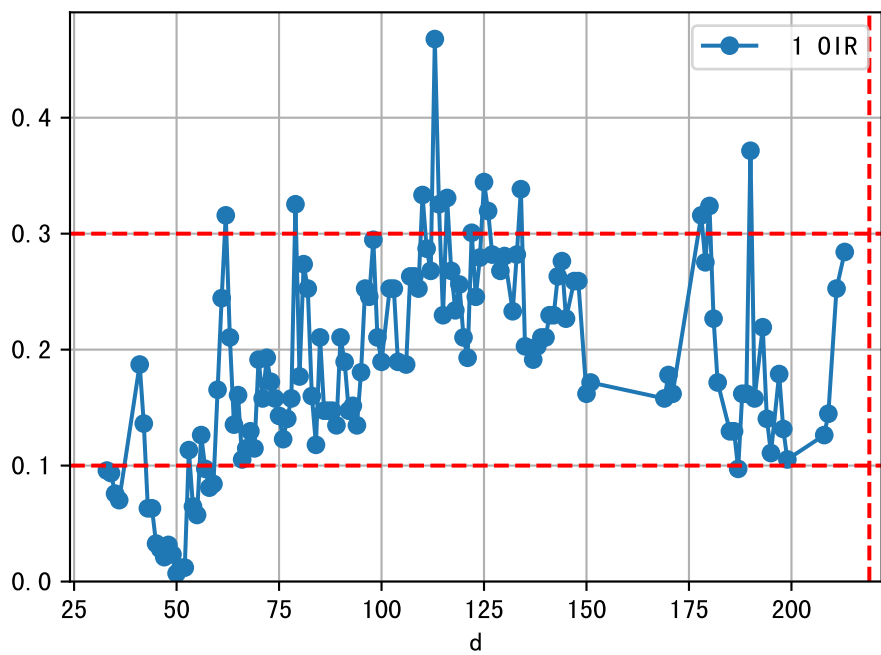
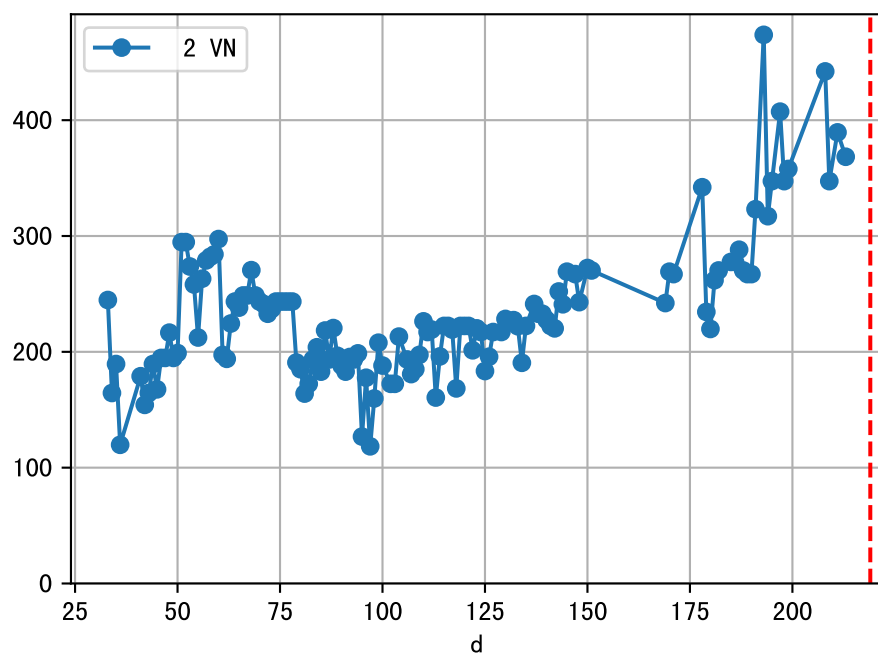
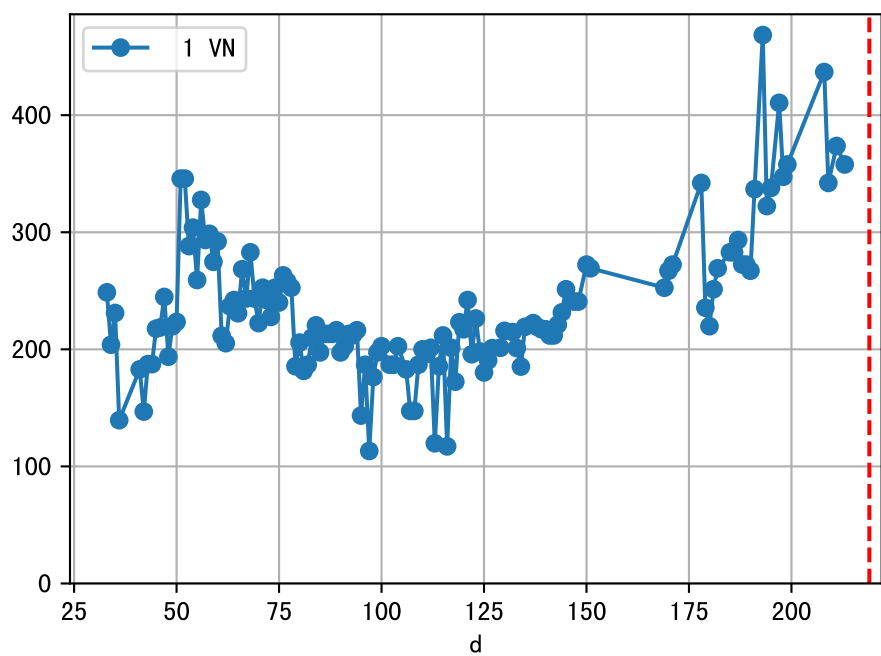
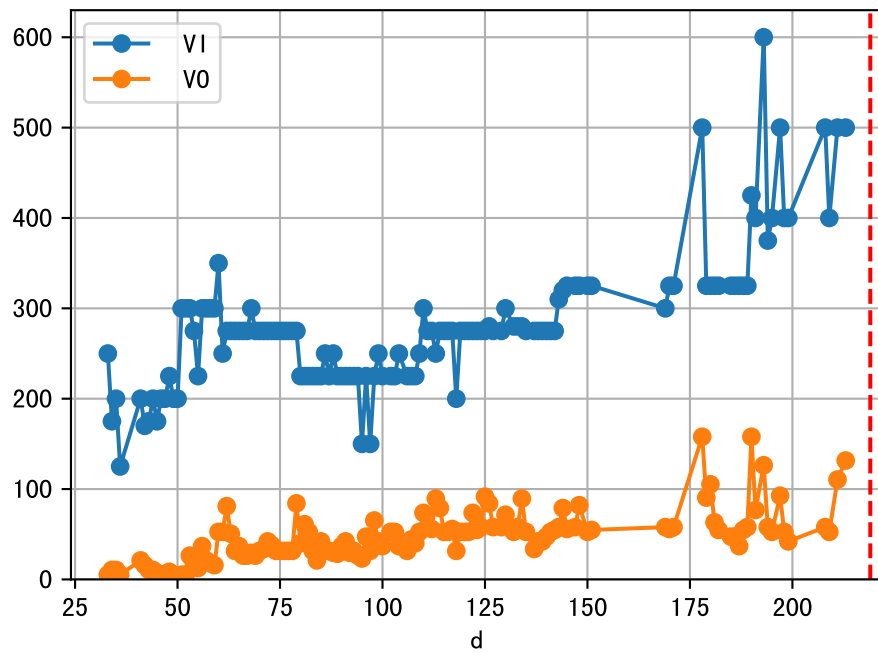


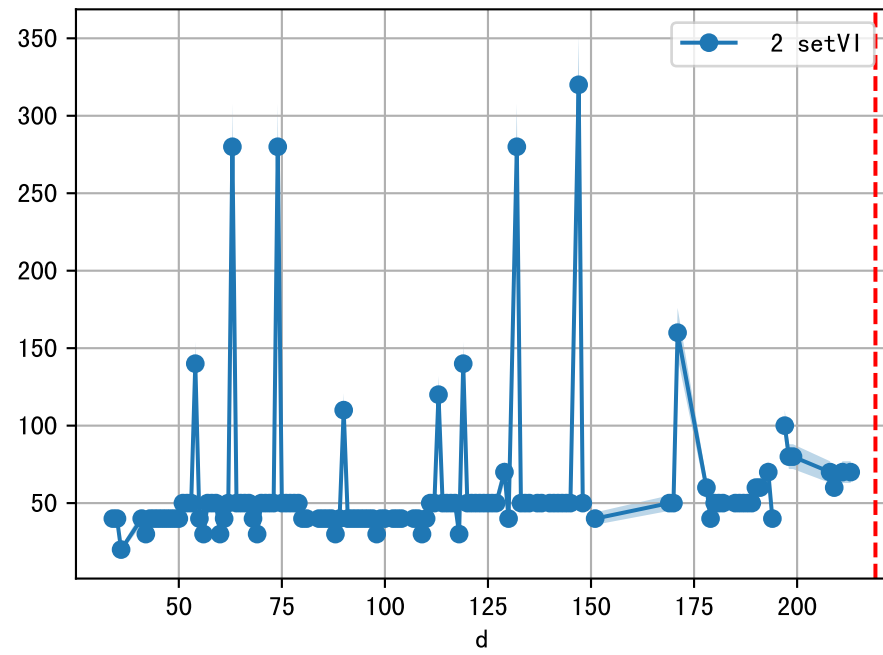
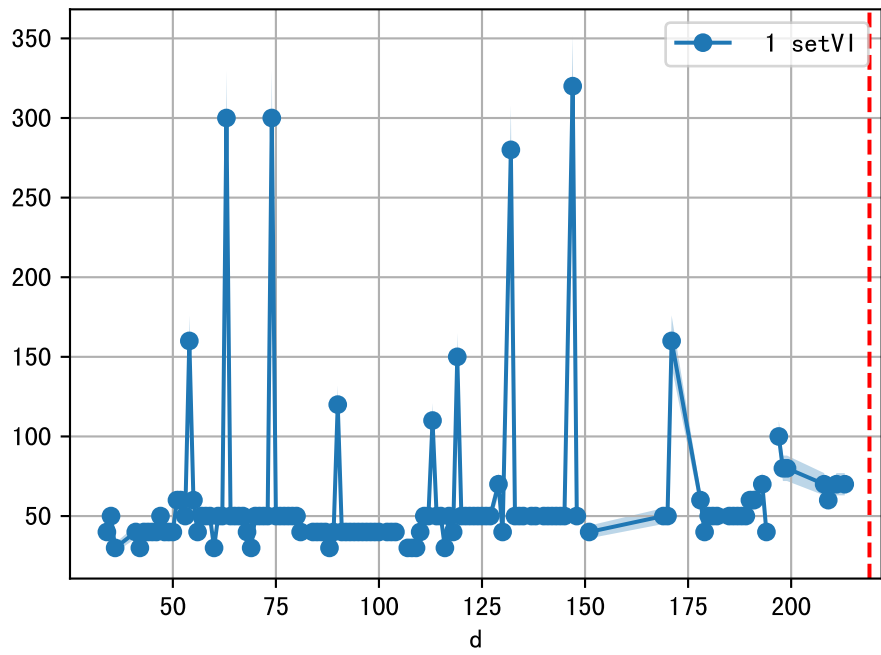
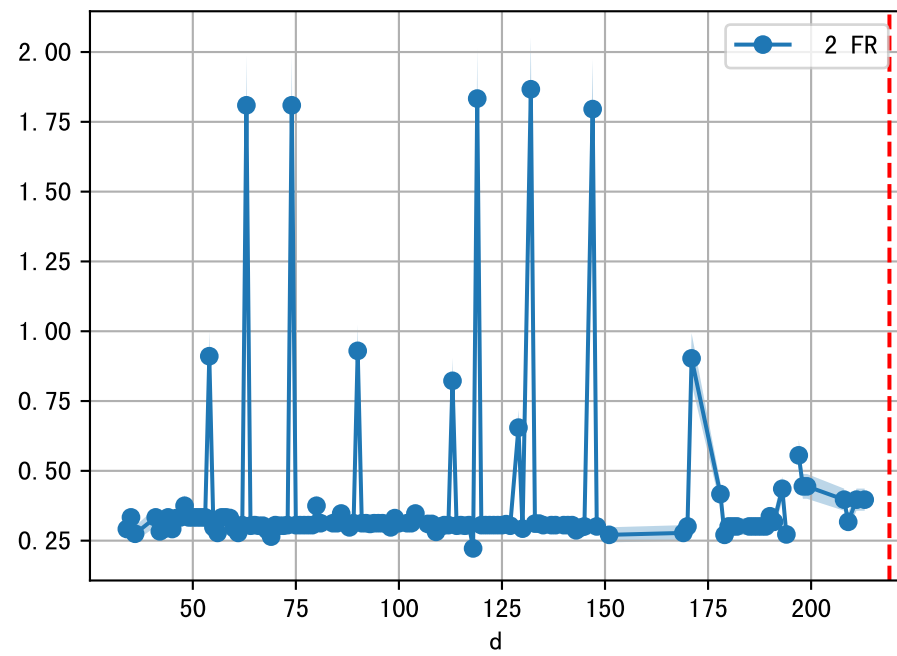
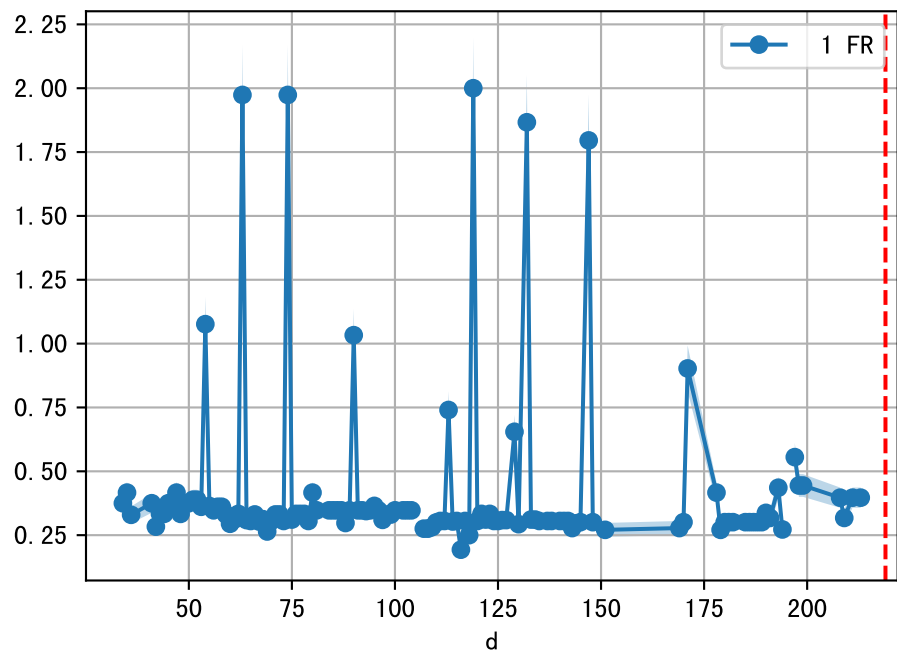
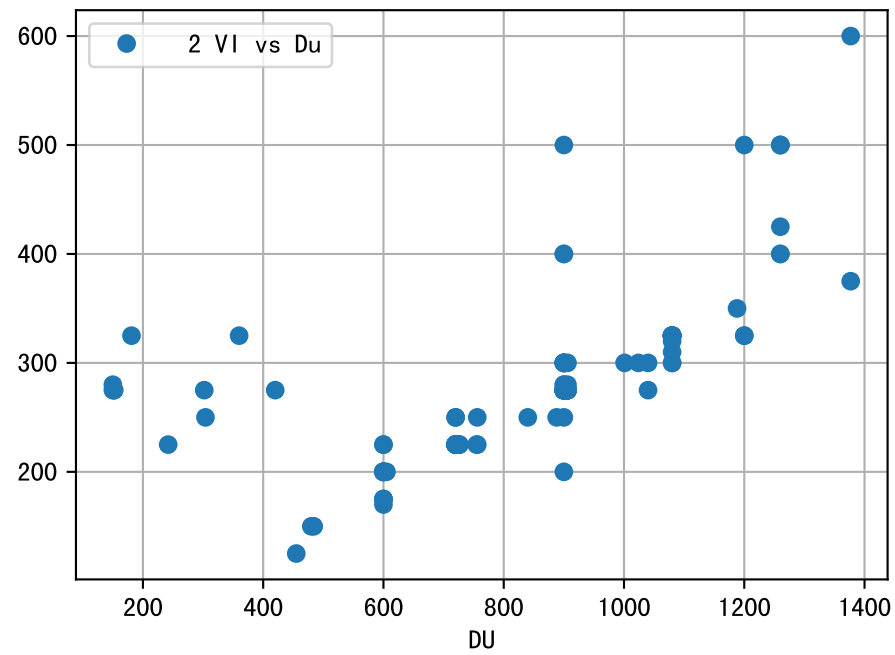
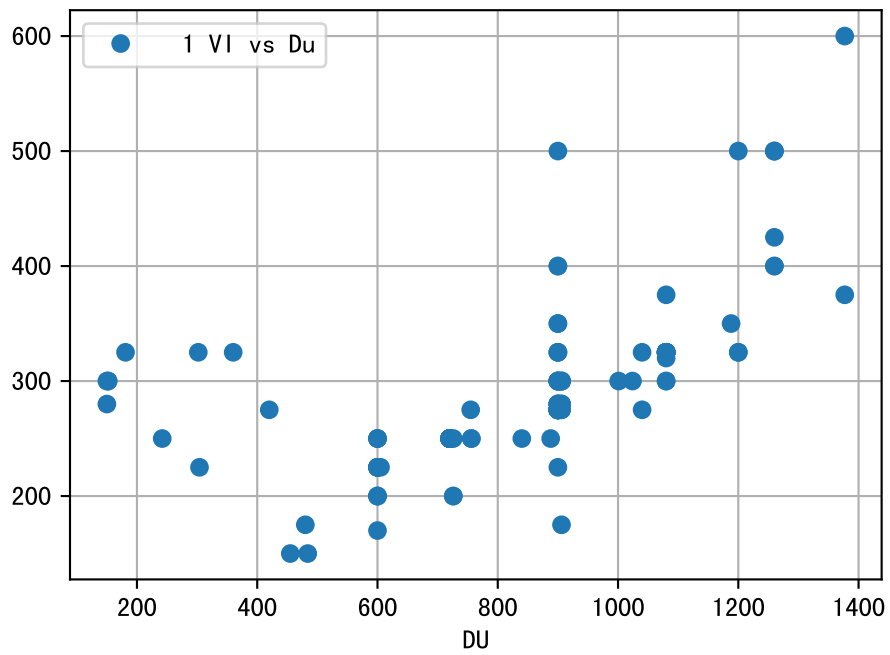
FgArea: [' 0']
SS40 XX11
2026-04-13 (Day 219)

fgNum 1 (at_row = 2.0)

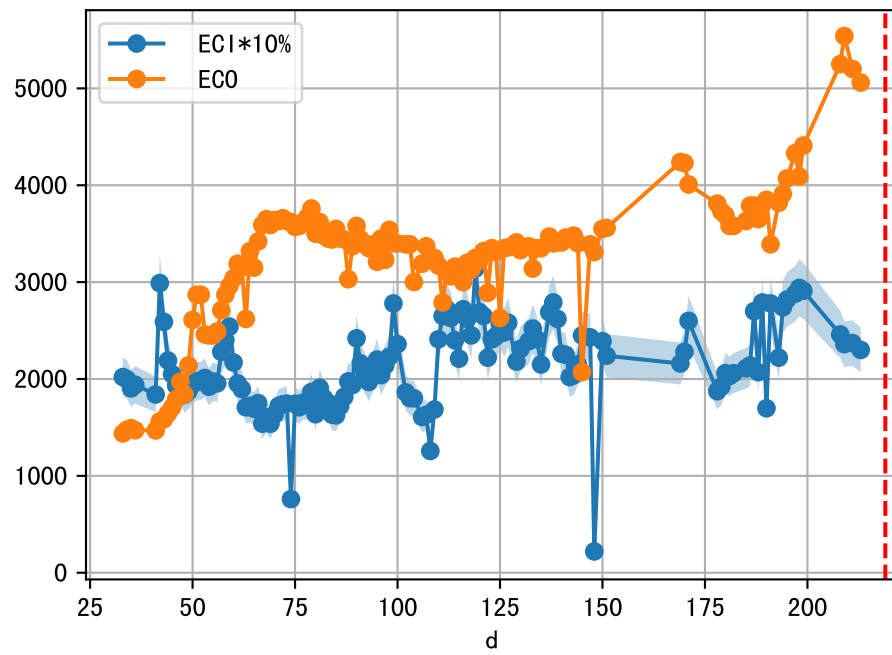


fgNum 2 (at_row = 47.0)

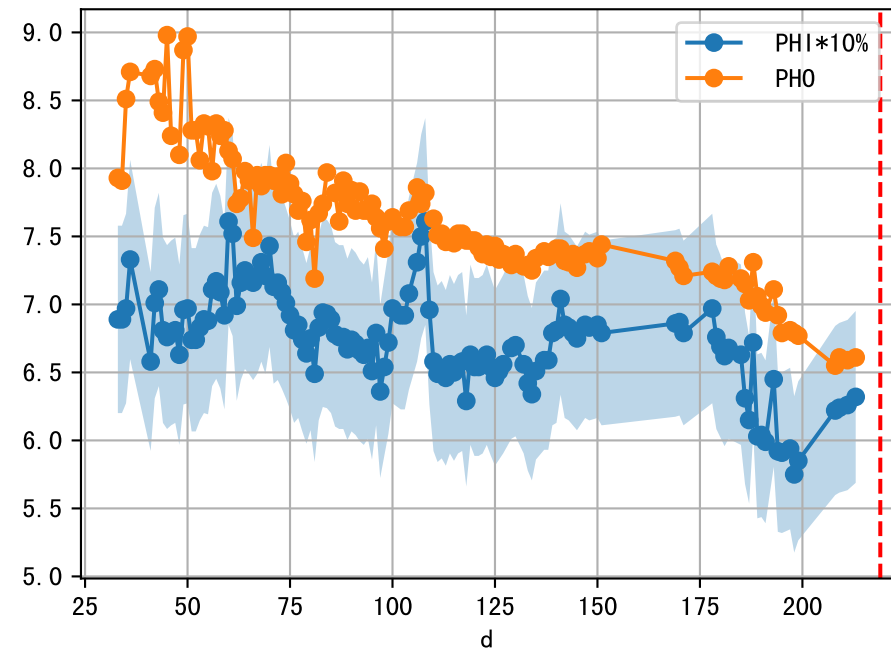
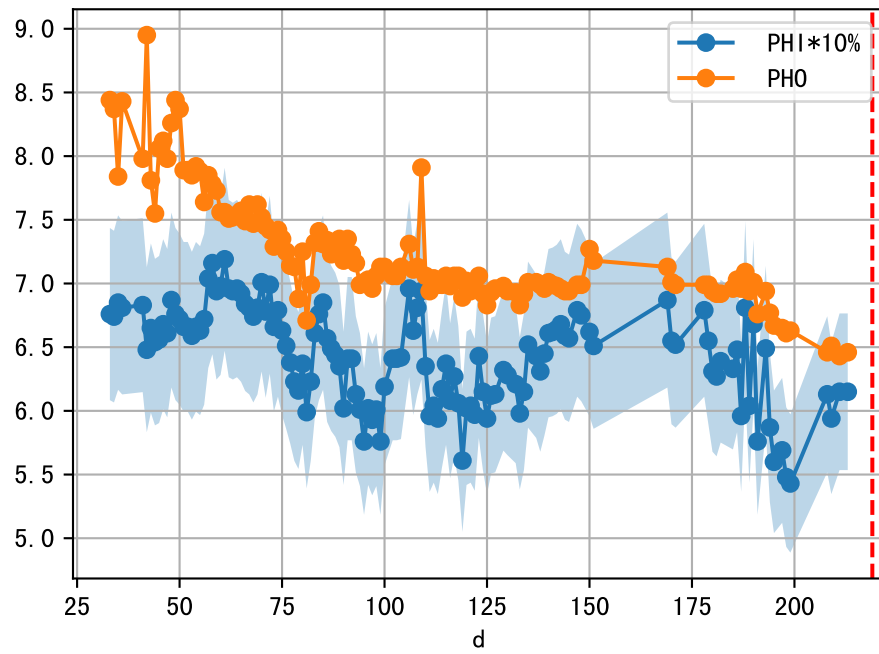
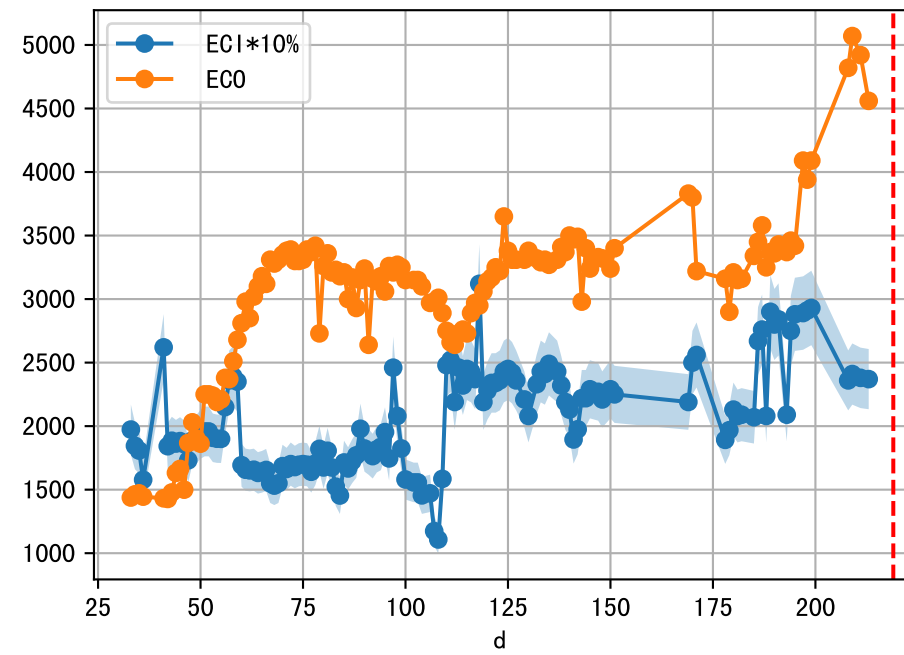




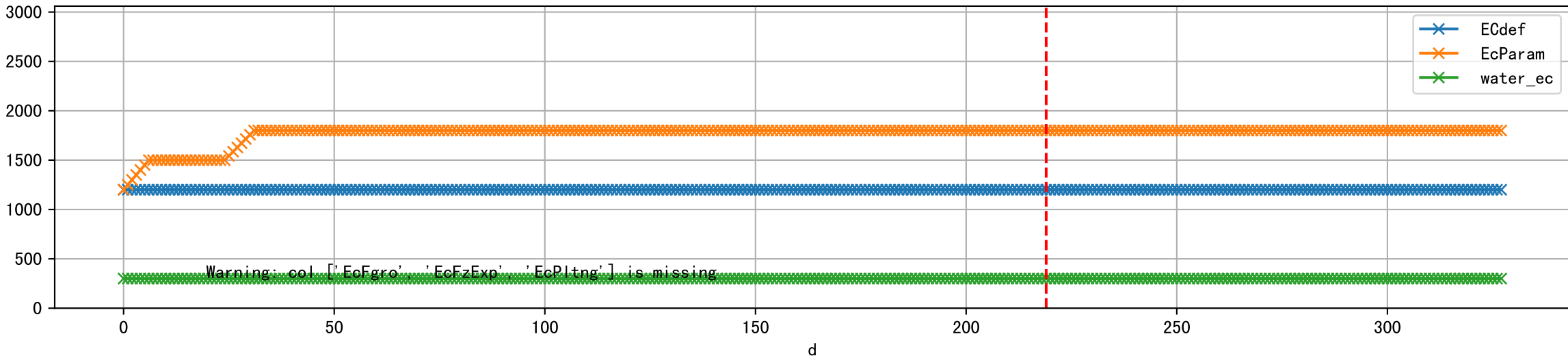
1 (fgArea = NA)



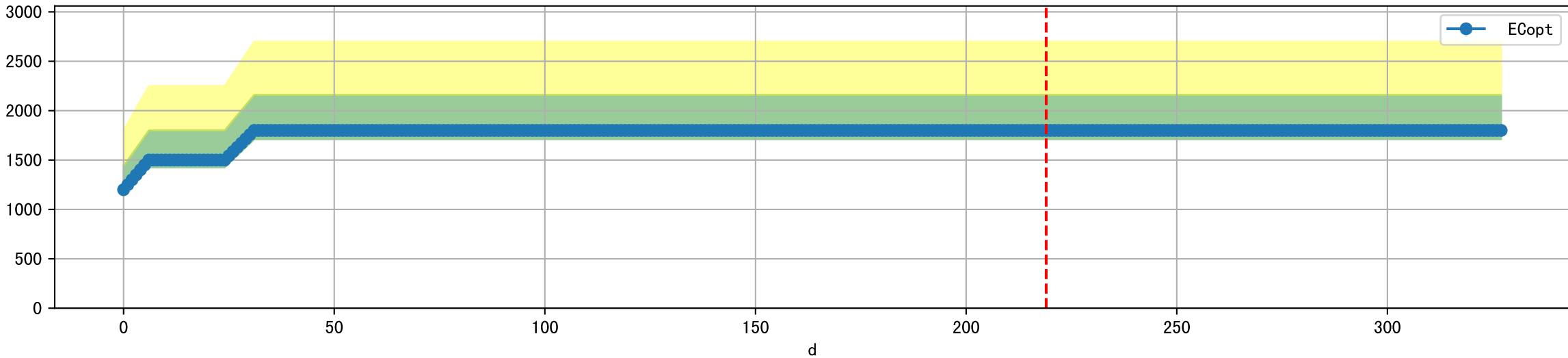
2 (fgArea = NA)



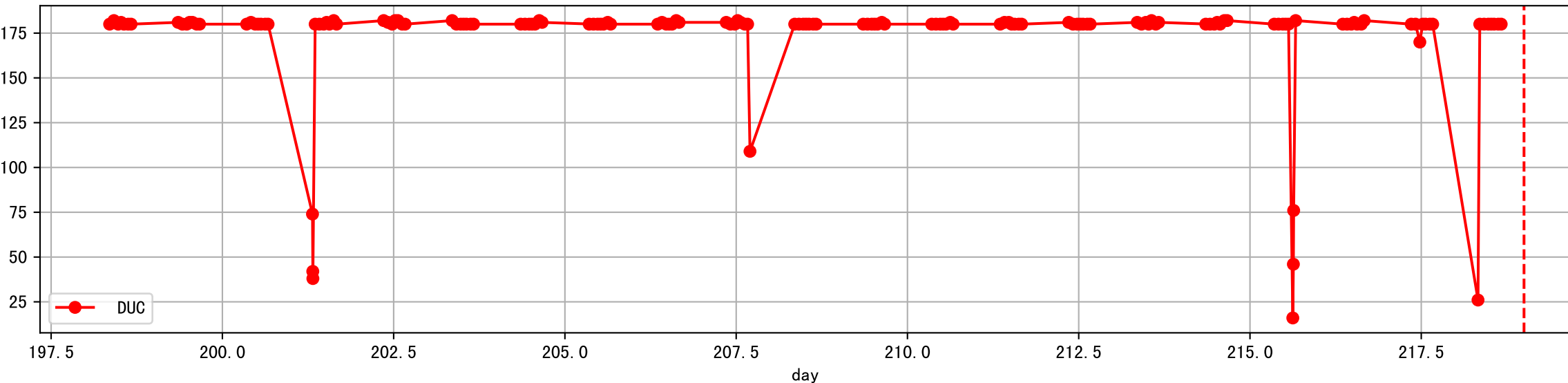
Plot [['EcFgro', 'EcFzExp', 'EcPltng', 'ECdef', 'EcParam', 'water_ec']]



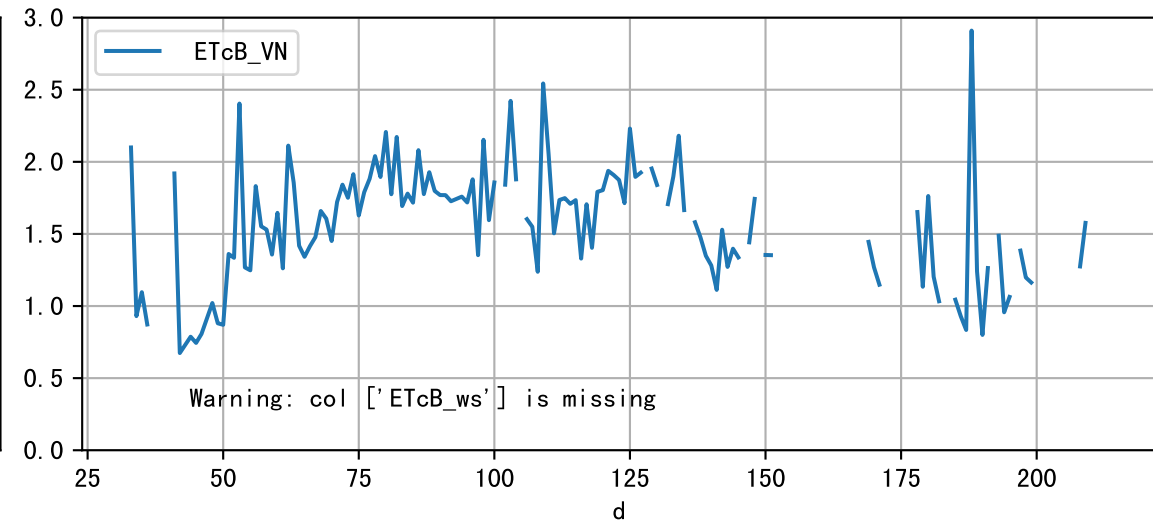
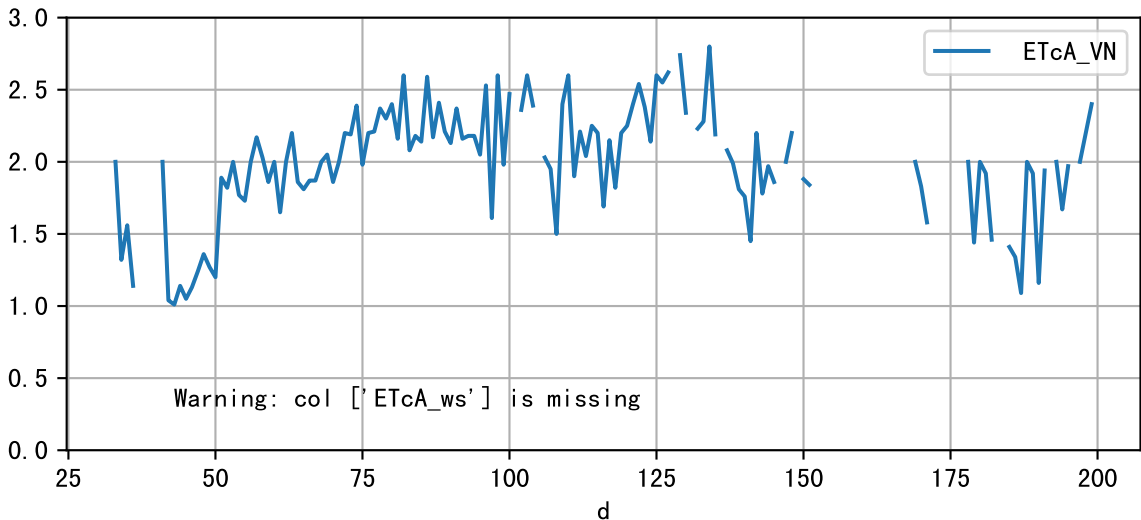
Plot [' ECopt']



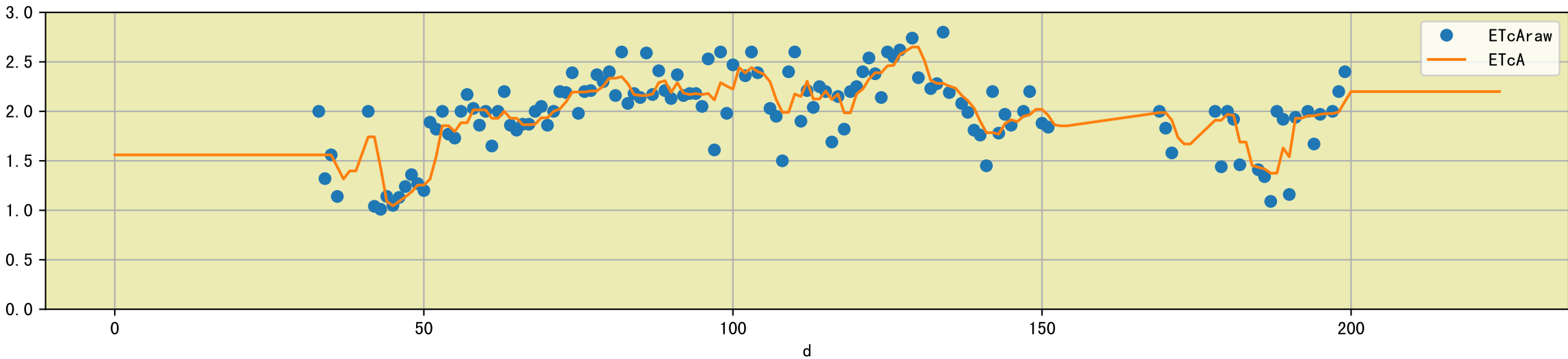
Plot Sensor and FgRec Detail



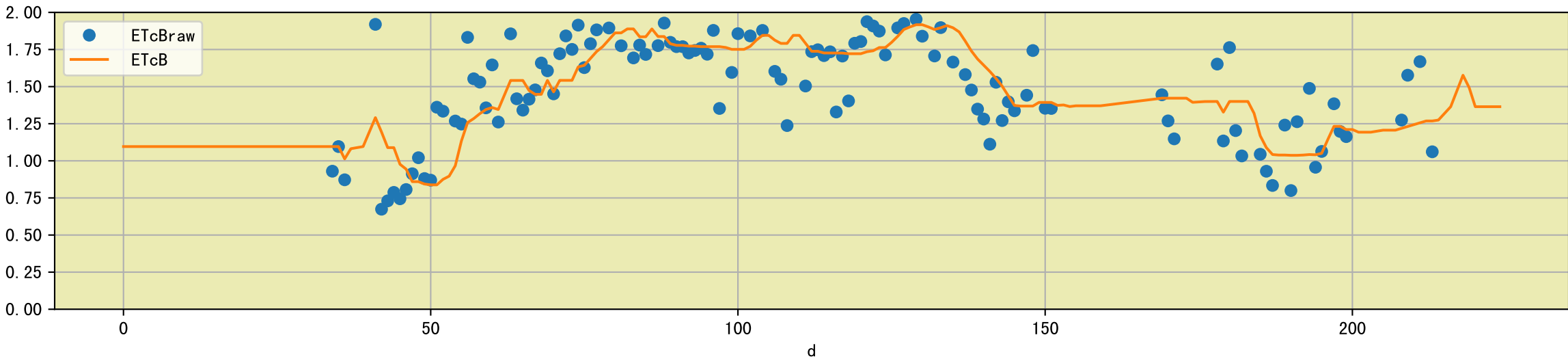
Plot [['ETcA_VN', 'ETcA_ws'], ['ETcB_VN', 'ETcB_ws']]

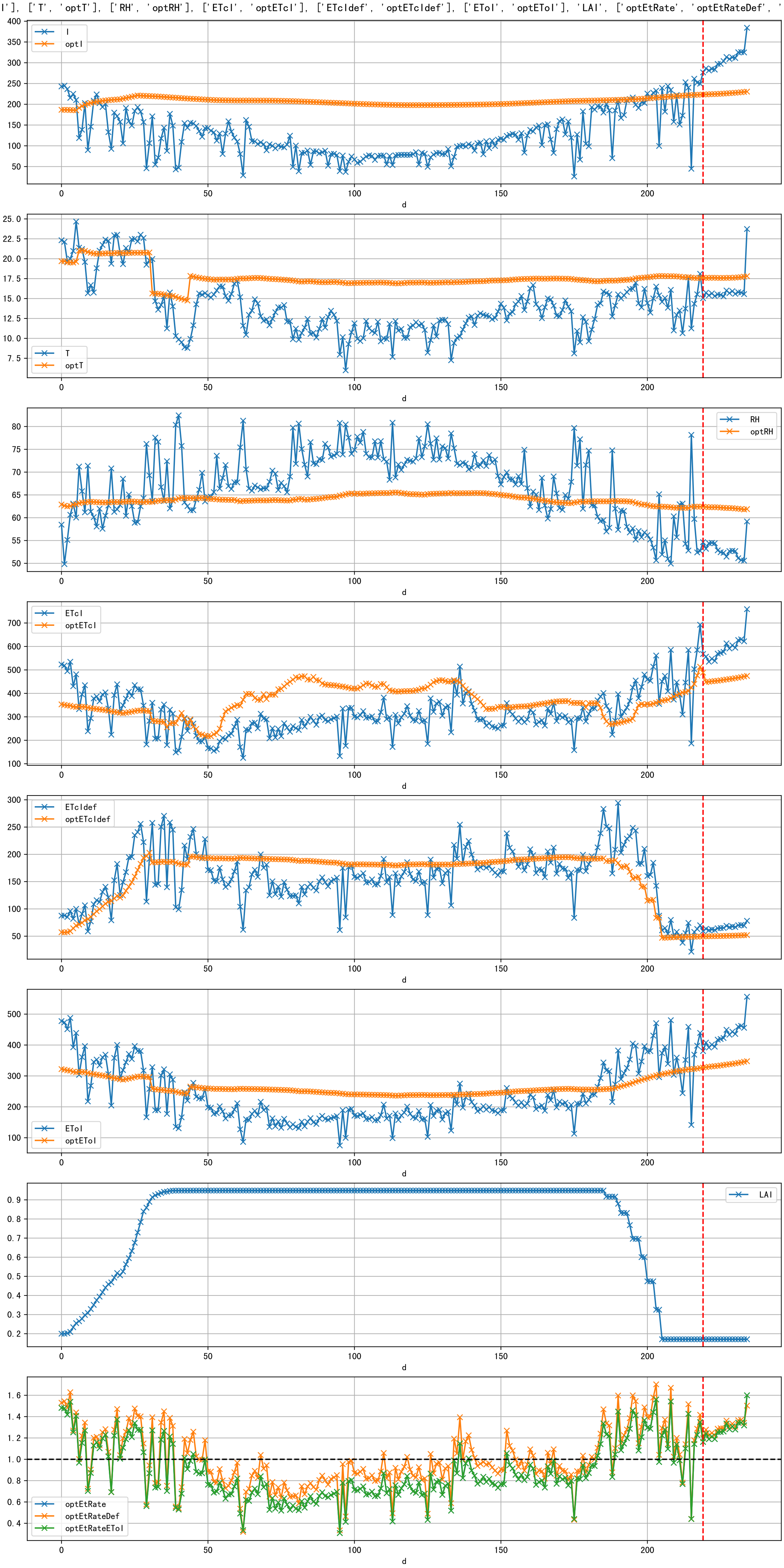


Plot [['ETcAraw:o', 'ETcA']]

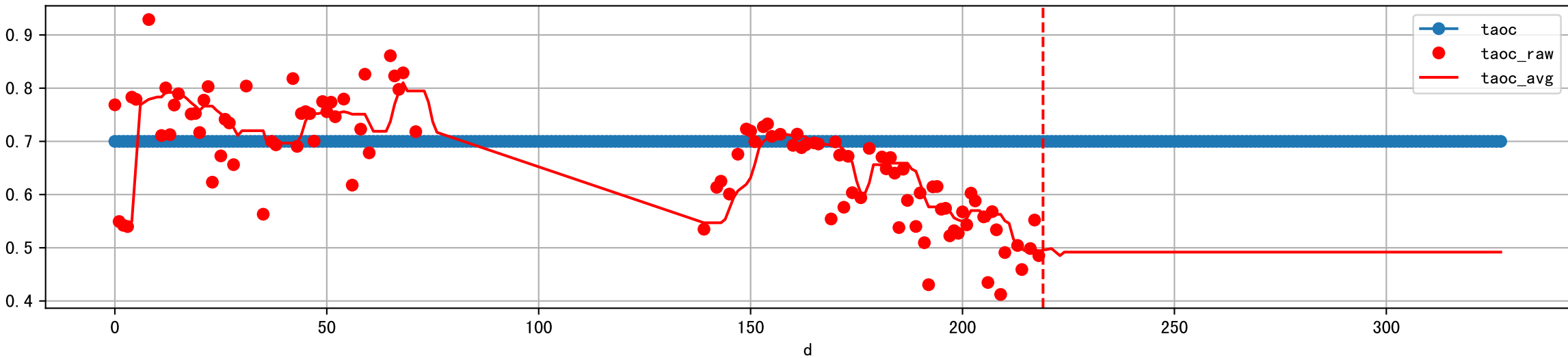


Plot [['ETcBraw:o', 'ETcB']]

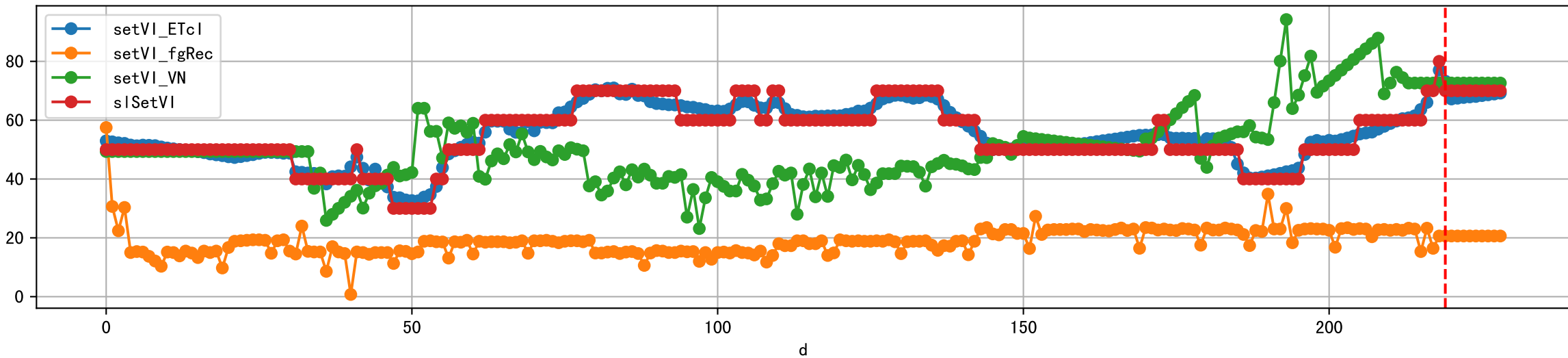




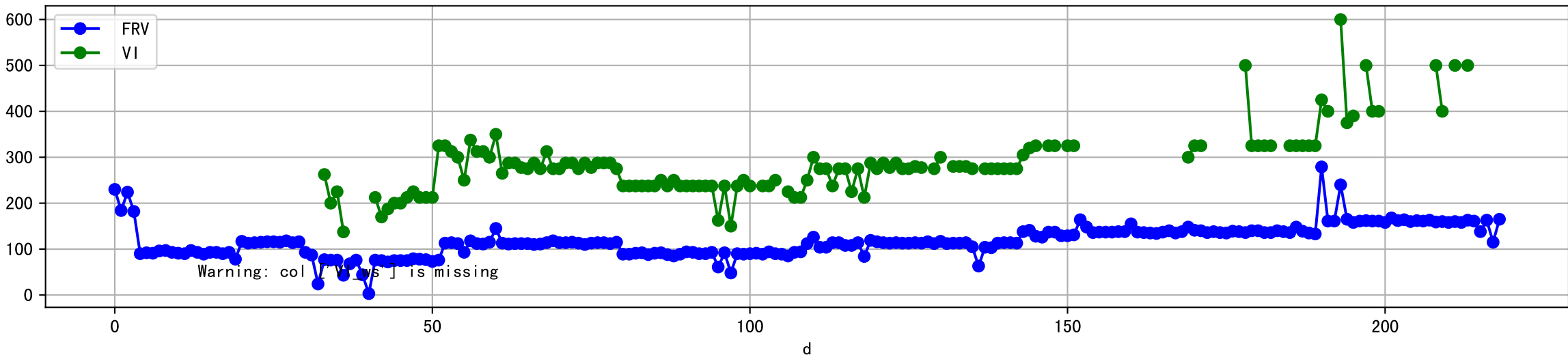
Plot [['taoc', 'taoc_raw:ro', 'taoc_avg:r-']]



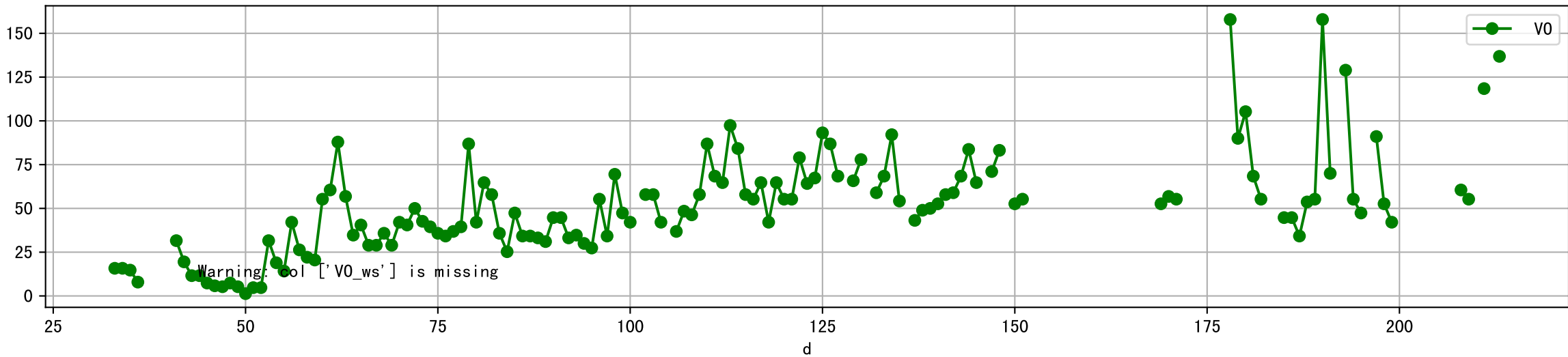
Plot [['setVI_ETcI', 'setVI_fgRec', 'setVI_VN', 'sISetVI']]



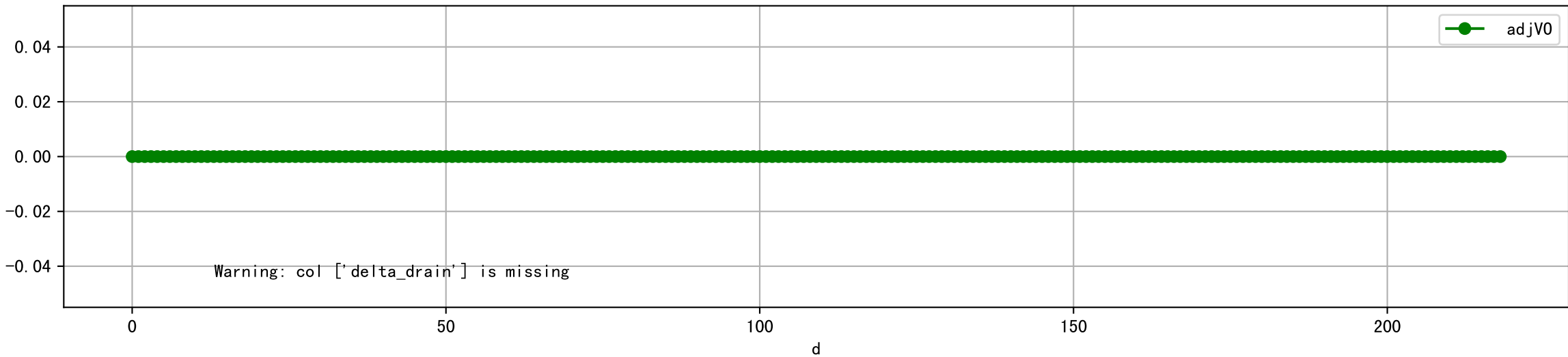
Plot [['FRV:b-o', 'VI_ws:r-o', 'VI:g-o']]



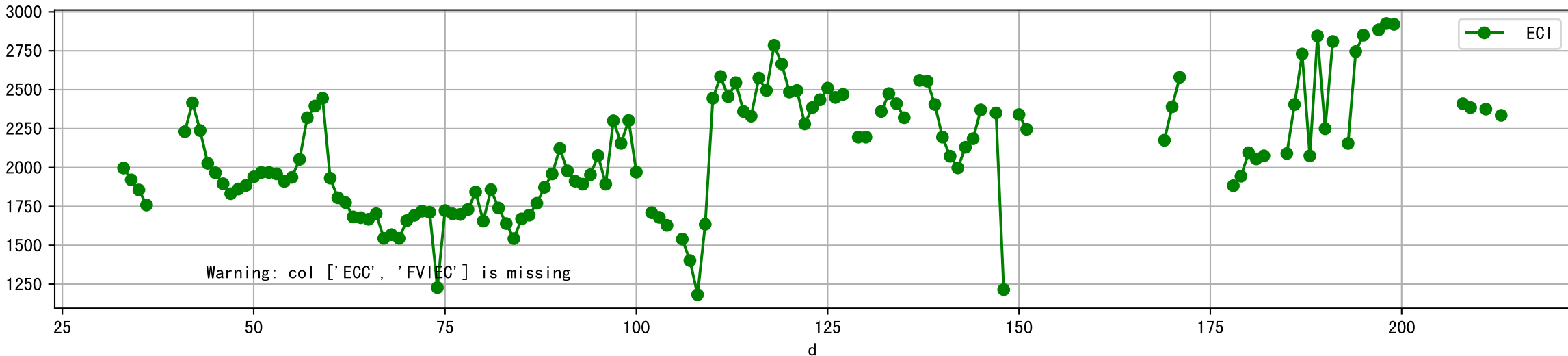
Plot [['V0_ws:r-o', 'V0:g-o']]



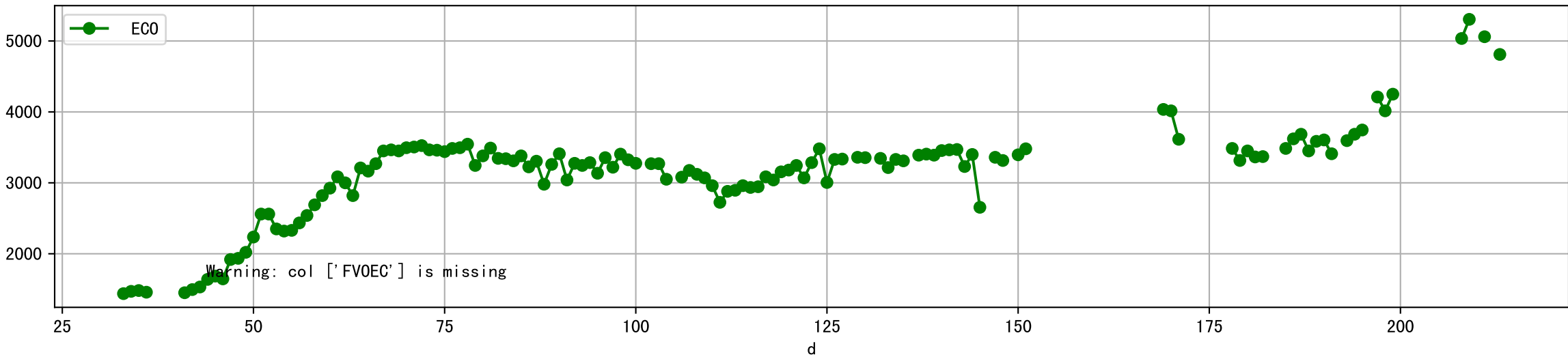
Plot [['delta_drain:ro', 'adjV0:g-o']]



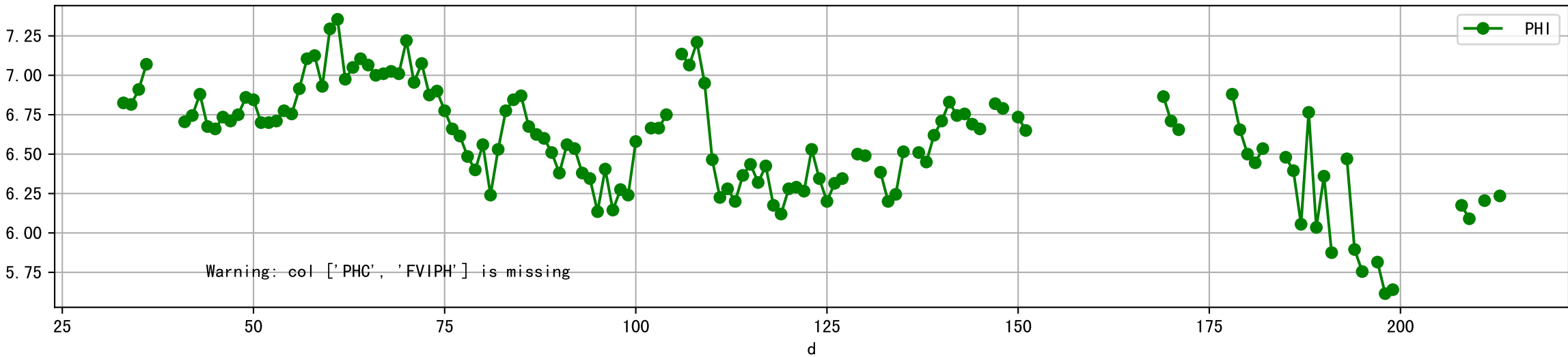
Plot [['ECC:b-o', 'FVIEC:r-o', 'ECI:g-o']]



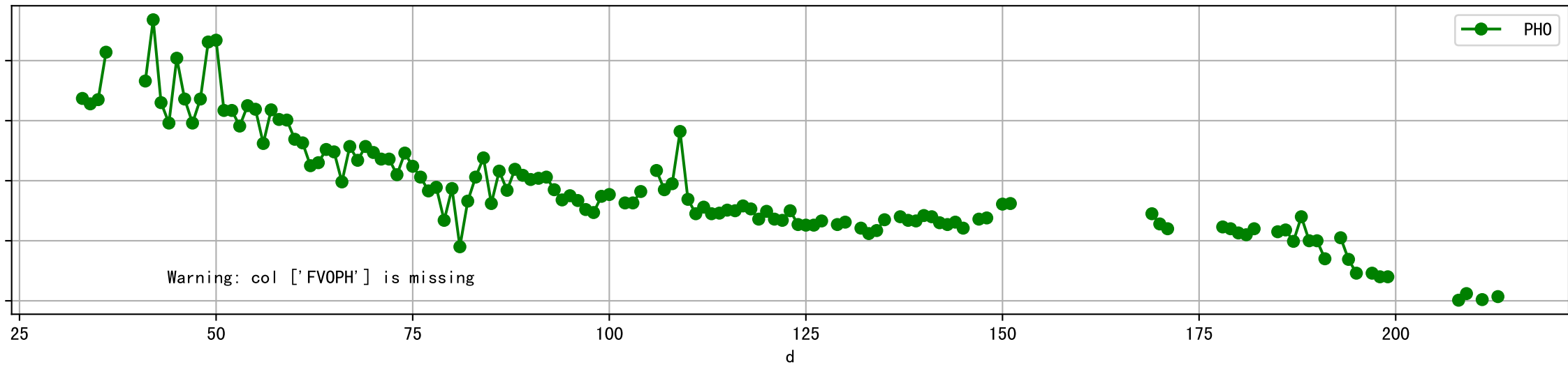
Plot [[' FVOEC:r-o', ' ECO:g-o']]



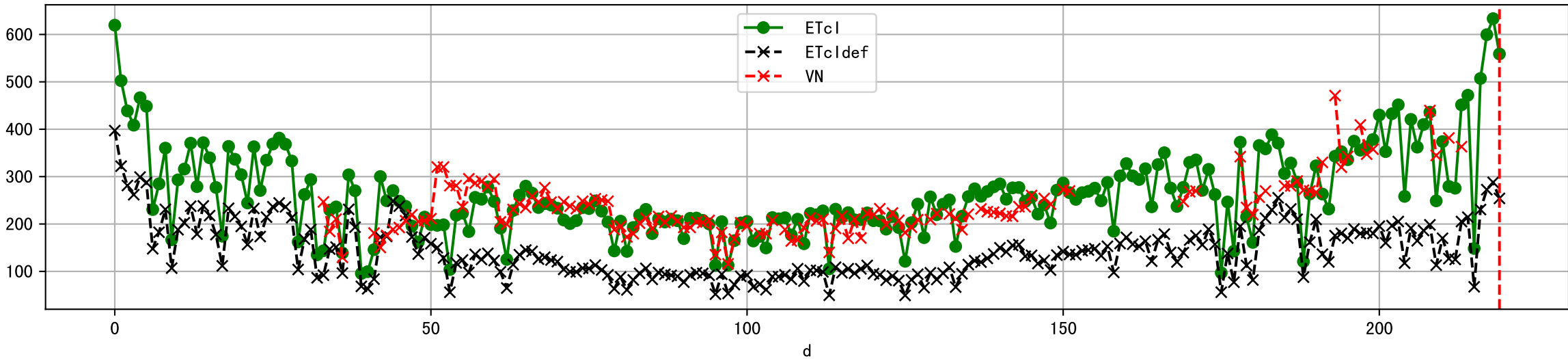
Plot [['PHC:b-o', 'FVIPH:r-o', 'PHI:g-o']]



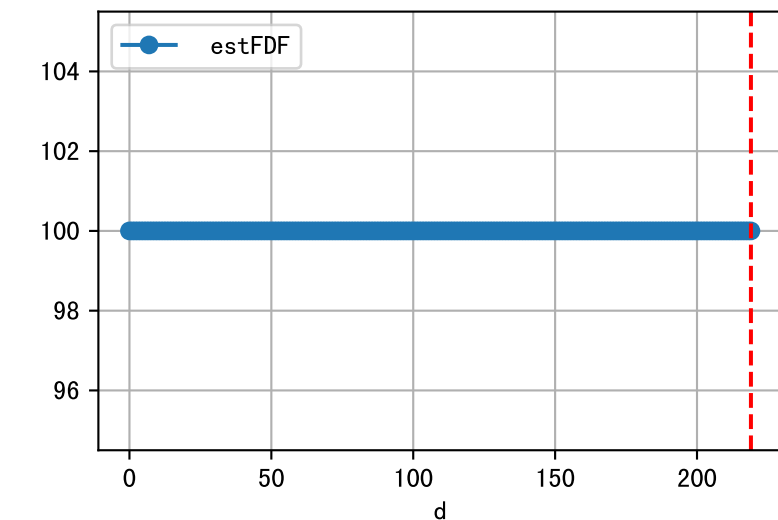
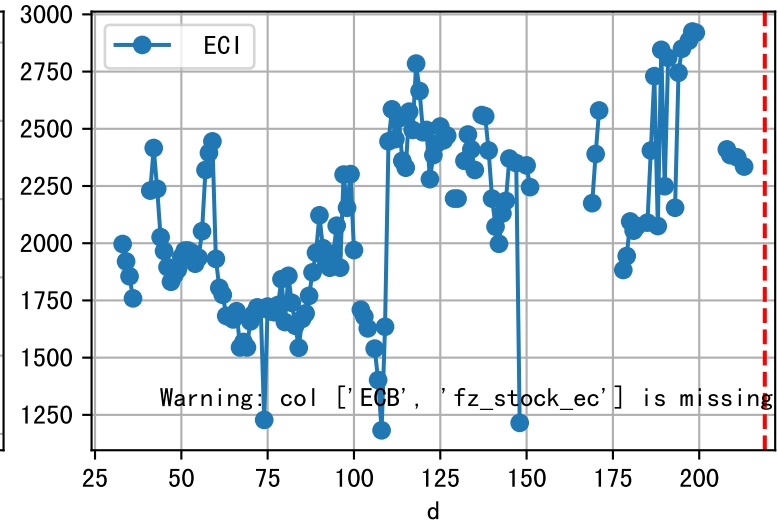
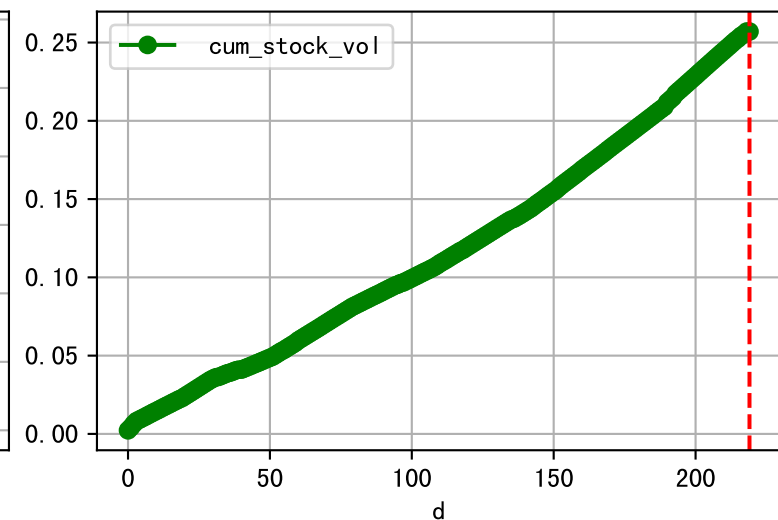
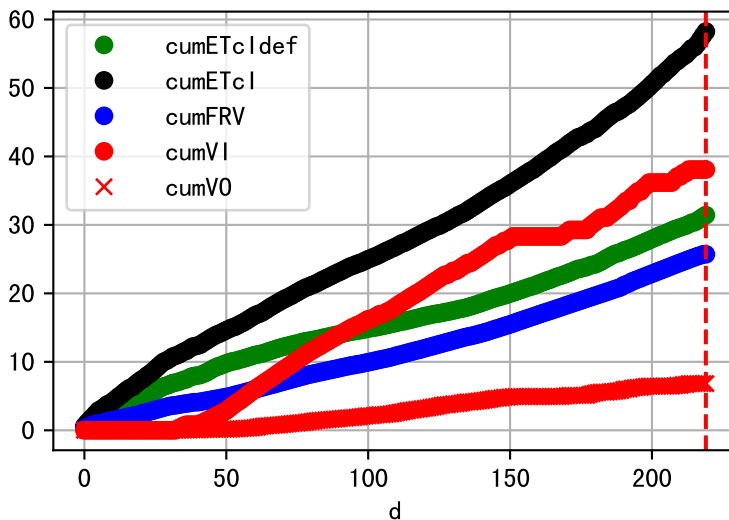
Plot [[' FVOPH:r-o', ' PHO:g-o']]



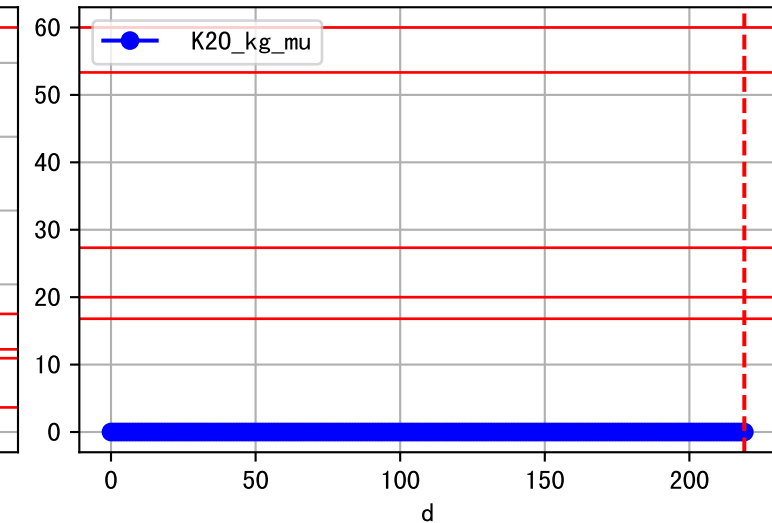
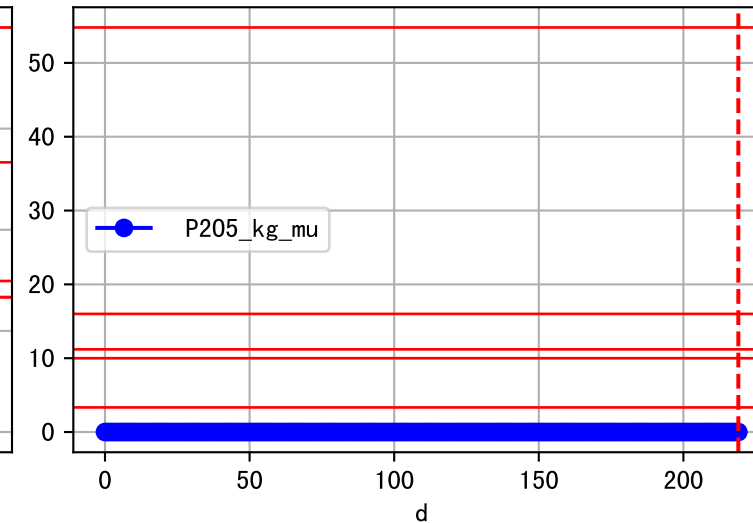
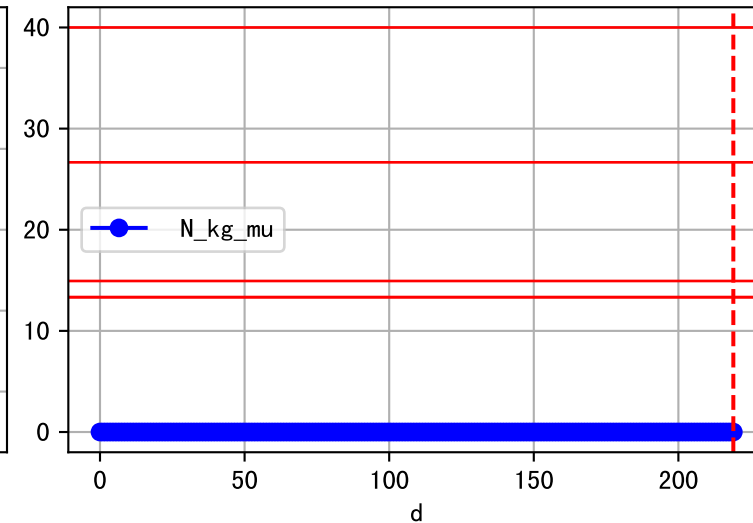
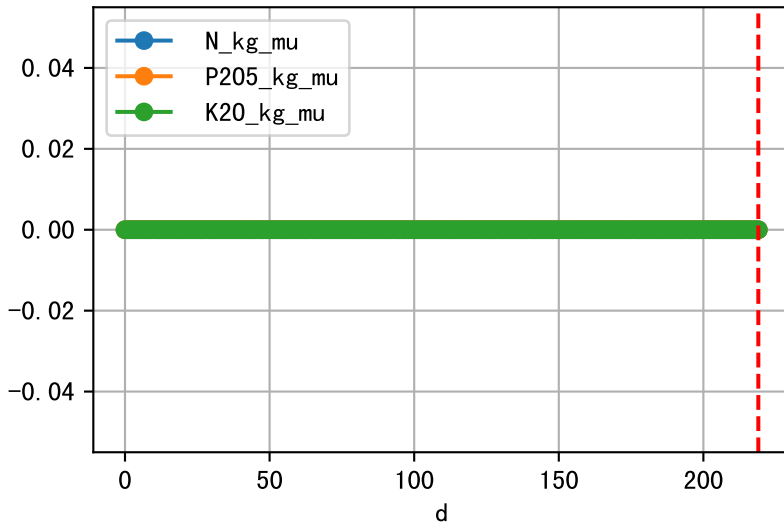
Plot ET/VN



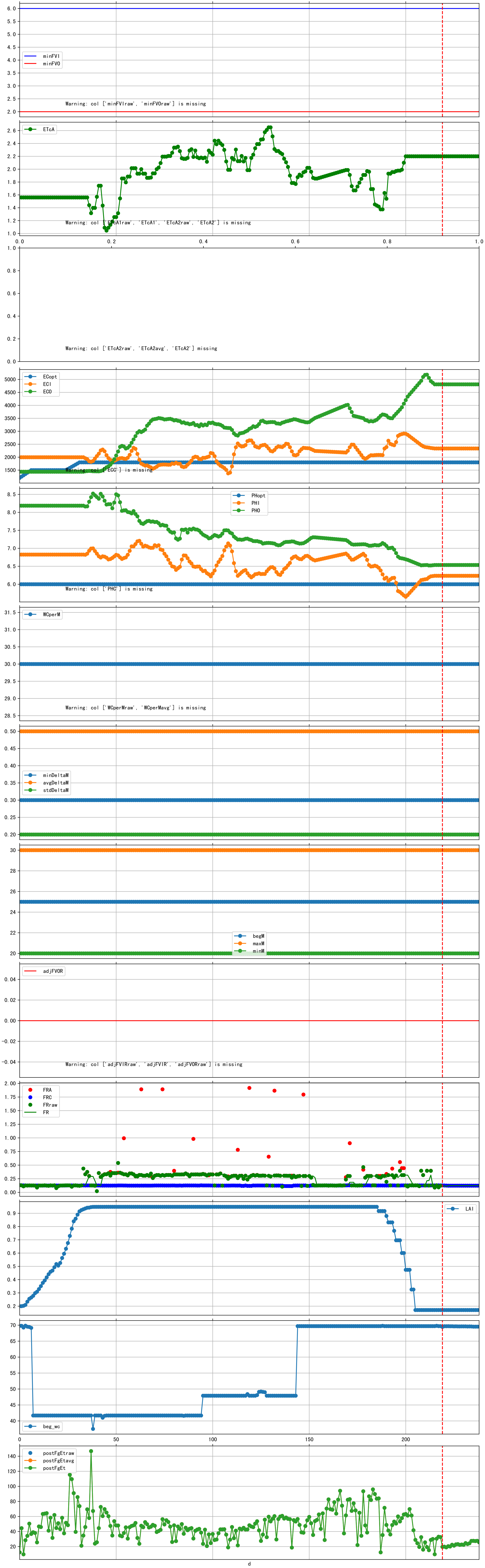
Plot Fv and fertilizer usage



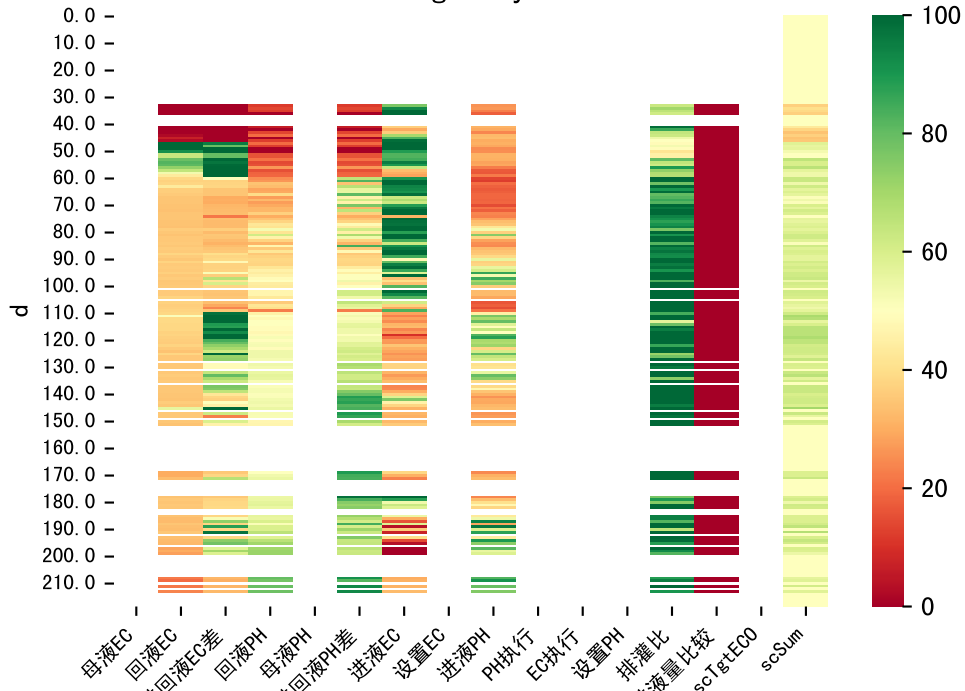
Fertilizer Range Source: kerleyL, kerleyH, UnivFL, TNAI, Haifa

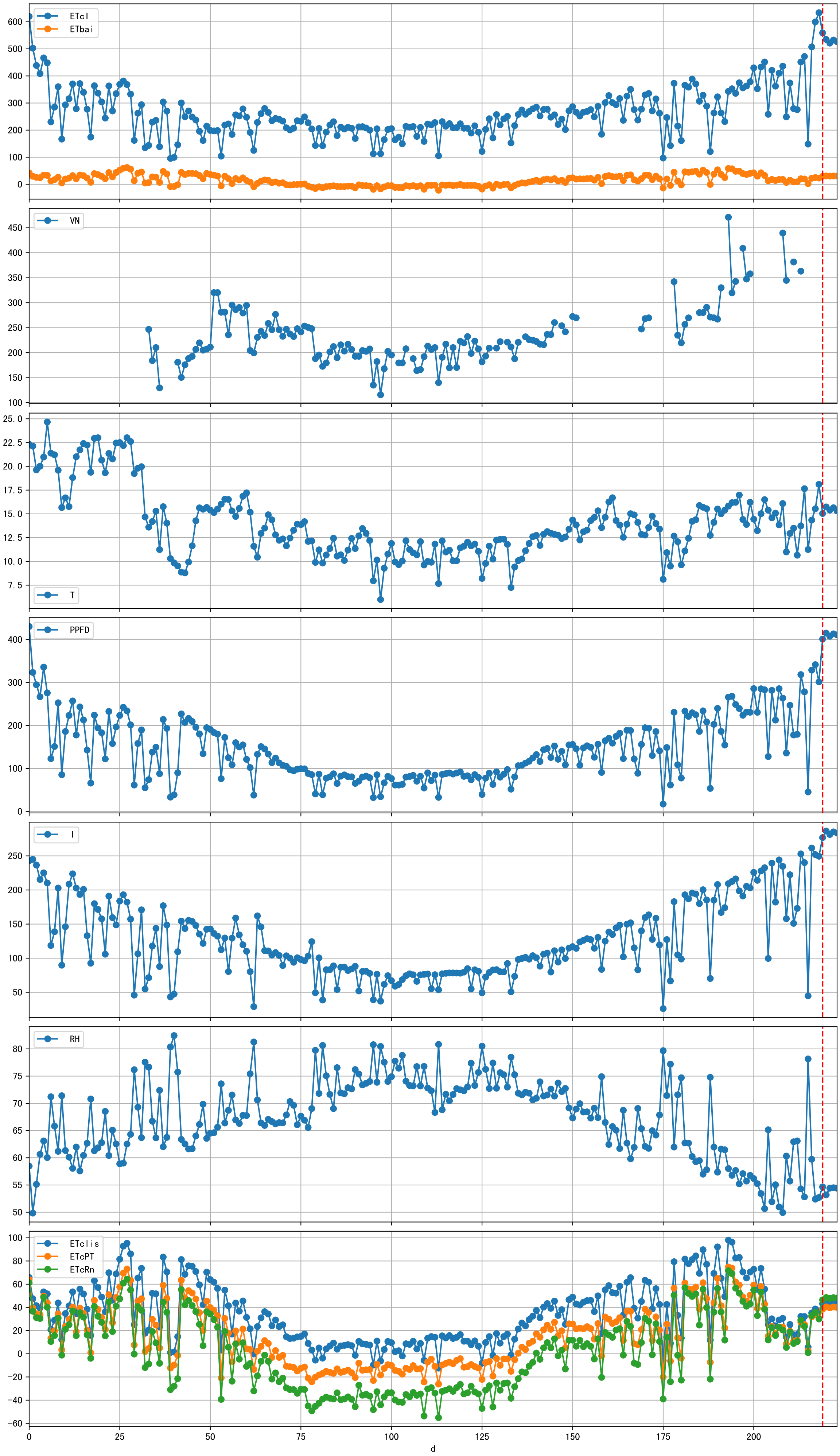


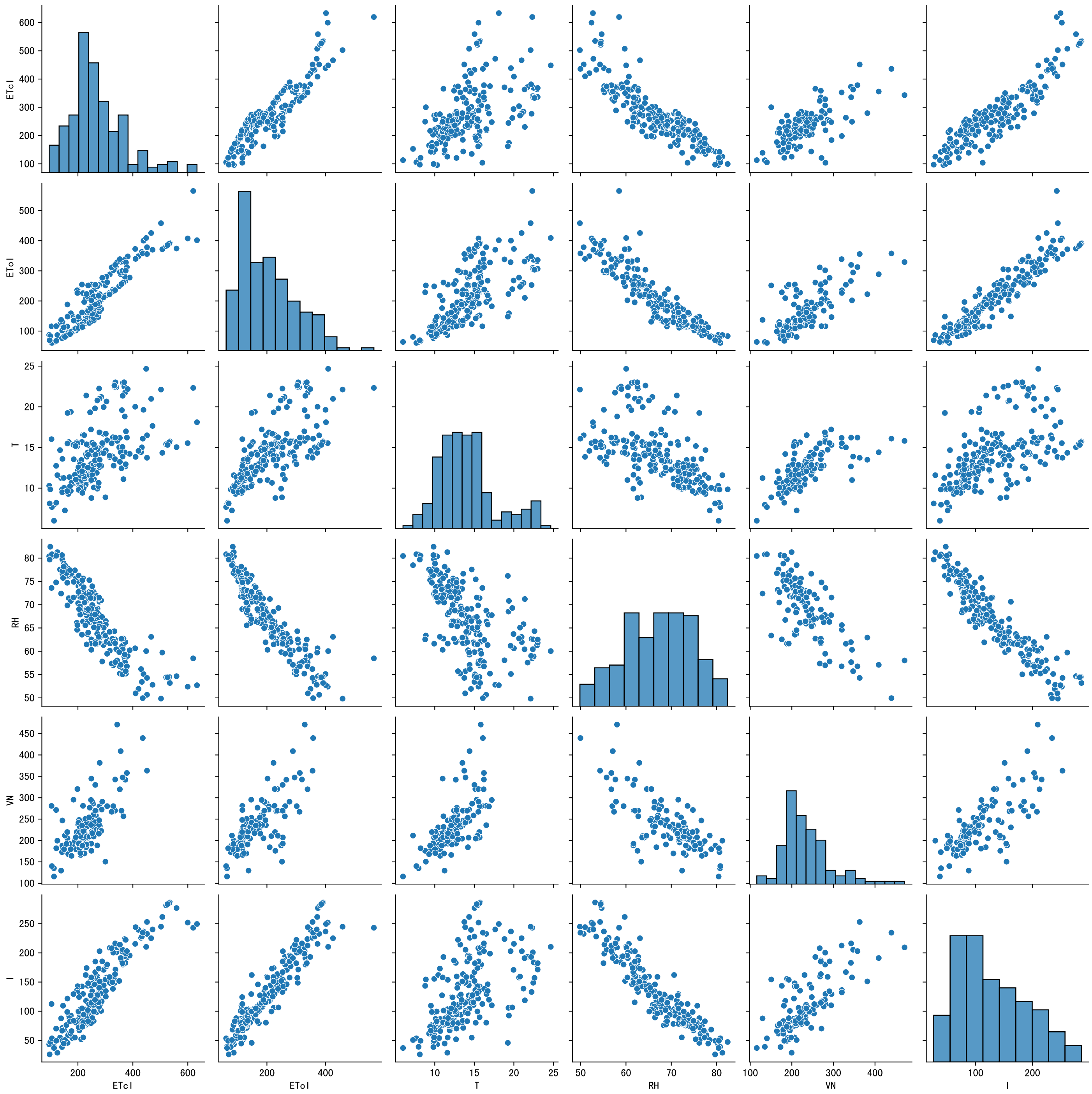
Trend plot forXX11_0

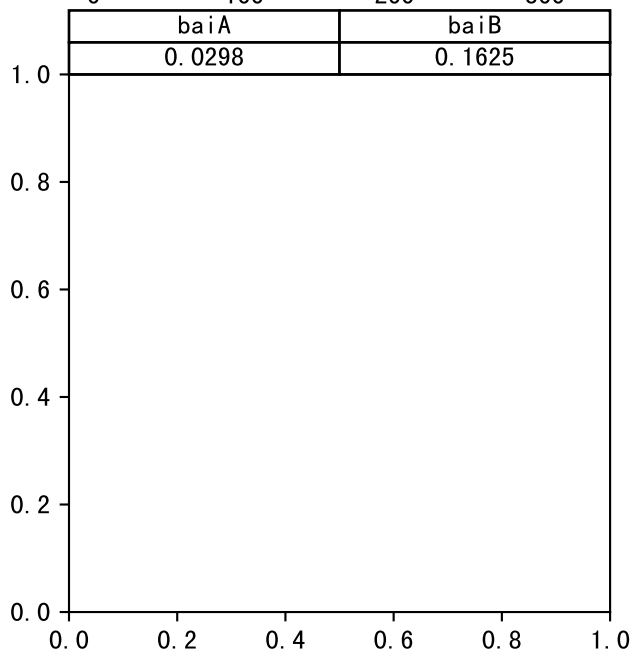
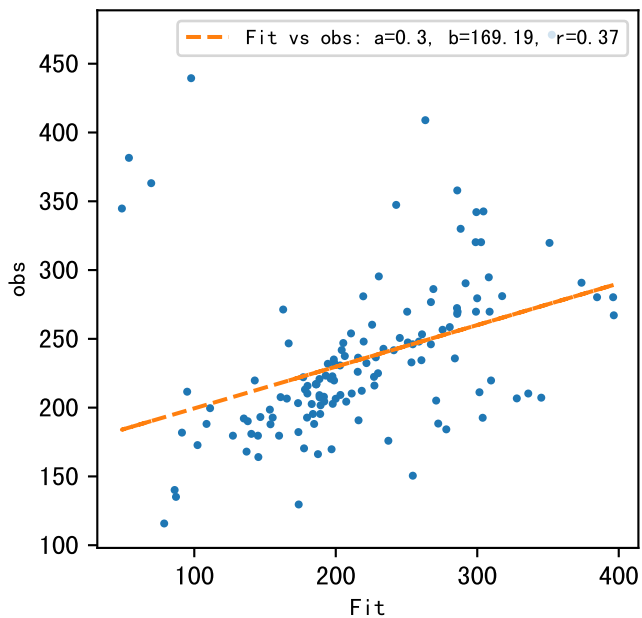
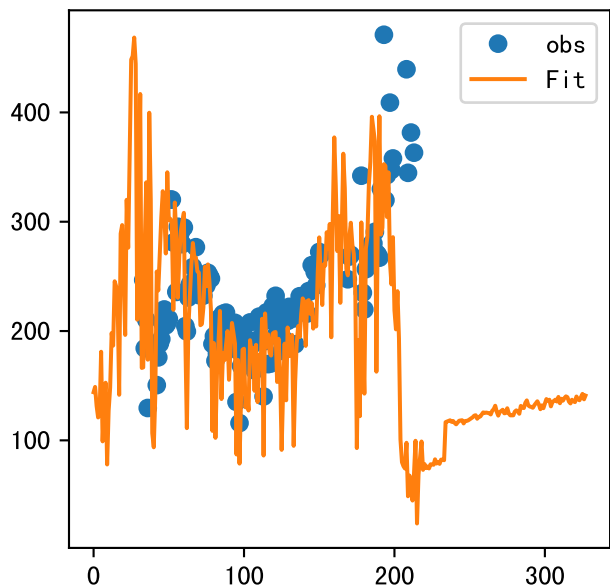


FgDaily









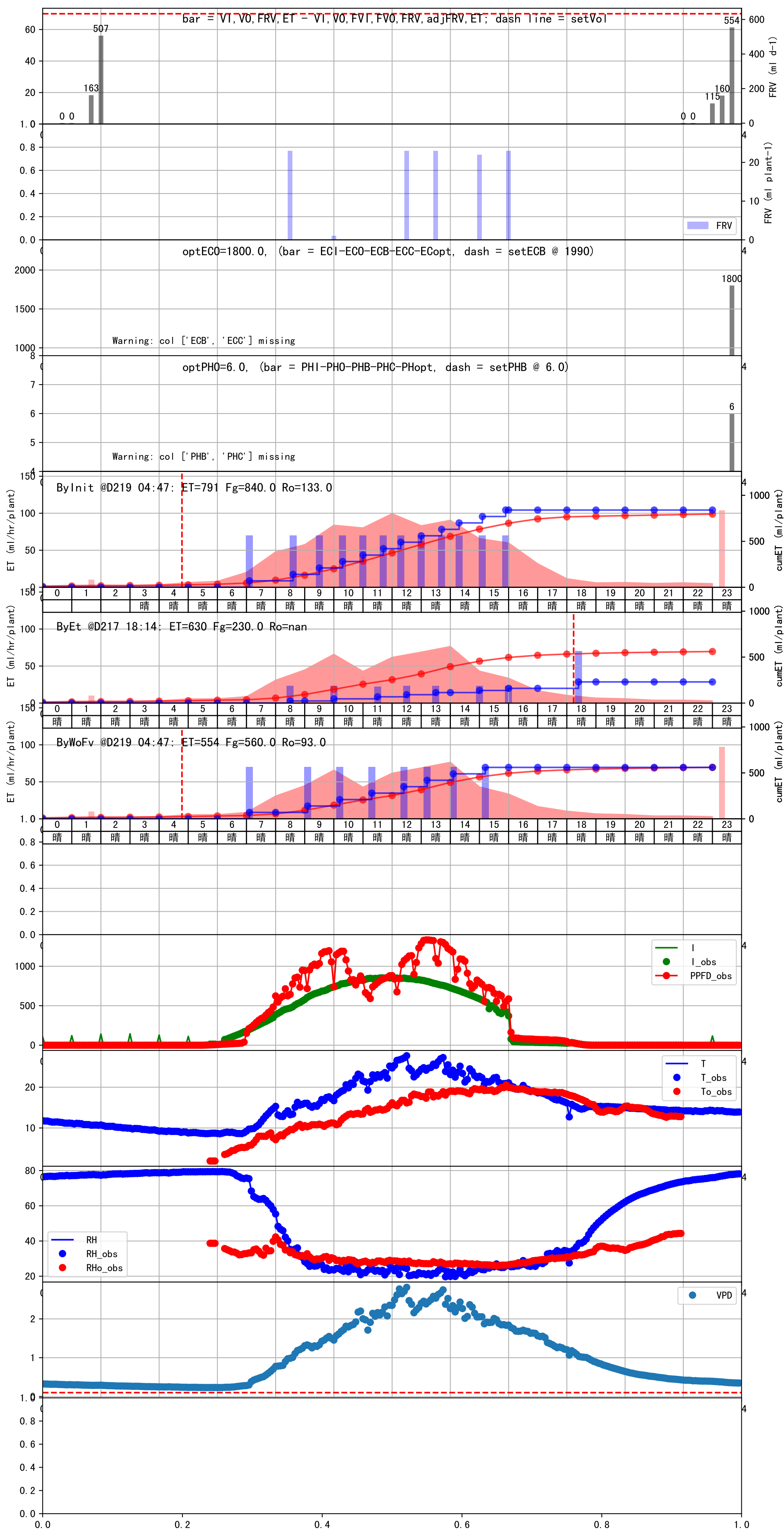
时间	灌溉时长(秒)	灌溉量(毫升/株)	灌溉总量(方/次)	天气	注释
07:00	636	70.0	0.698	多云	预期@07:00 手动 (未用传感器)
09:05	636	70.0	0.698	多云	预期@09:05 手动 (未用传感器)
10:20	636	70.0	0.698	多云	预期@10:20 手动 (未用传感器)
11:20	636	70.0	0.698	多云	预期@11:20 手动 (未用传感器)
12:15	636	70.0	0.698	多云	预期@12:15 手动 (未用传感器)
13:10	636	70.0	0.698	多云	预期@13:10 手动 (未用传感器)
14:10	636	70.0	0.698	多云	预期@14:10 手动 (未用传感器)
15:20	636	70.0	0.698	多云	预期@15:20 手动 (未用传感器)
总计	5088.0 (8次)	560.0			建议进液EC: 1990, PH: 6.0

时间	灌溉时长(秒)	灌溉量(毫升/株)	灌溉总量(方/次)	天气	注释
07:05	26	70.0	0.698	晴	假设@07:05 手动 (未用传感器)
08:45	26	70.0	0.698	晴	假设@08:45 手动 (未用传感器)
10:00	26	70.0	0.698	晴	假设@10:00 手动 (未用传感器)
11:00	26	70.0	0.698	晴	假设@11:00 手动 (未用传感器)
12:00	26	70.0	0.698	晴	假设@12:00 手动 (未用传感器)
12:55	26	70.0	0.698	晴	假设@12:55 手动 (未用传感器)
13:40	26	70.0	0.698	晴	假设@13:40 手动 (未用传感器)
14:30	26	70.0	0.698	晴	假设@14:30 手动 (未用传感器)
15:35	26	70.0	0.698	晴	假设@15:35 手动 (未用传感器)
总计	234.0 (9次)	630.0			建议进液EC: 1990, PH: 6.0

滴头平均流速偏小 (0.13 vs def 0.5), 请检查
上次灌溉时长未按模型建议 (180 vs 538.0))
默认实际灌溉23.0 ml.

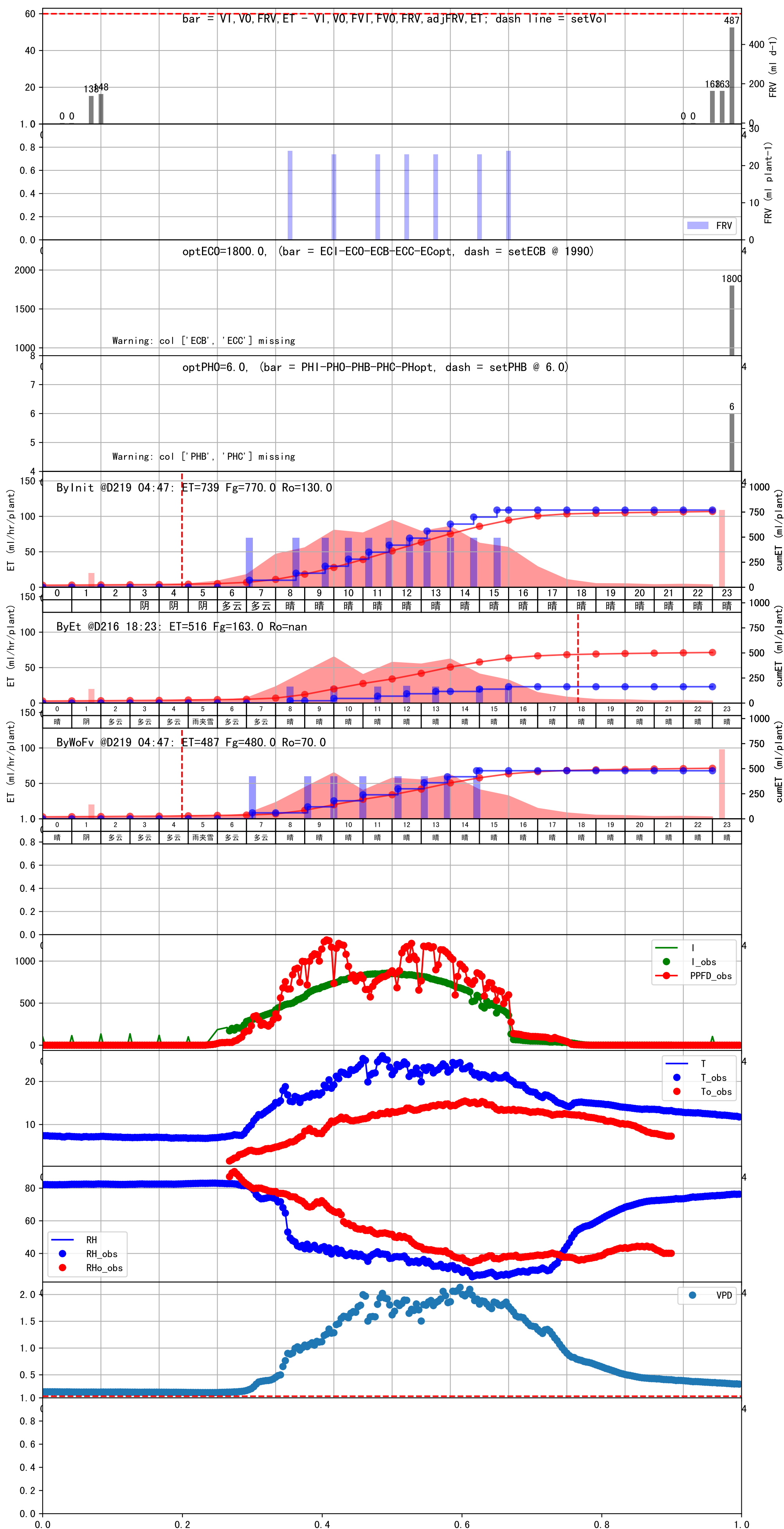
时间	灌溉时长(秒)	灌溉量(毫升/株)	灌溉总量(方/次)	天气	注释
07:05	180	70.0	0.698	晴	假设@07:05 手动 (未用传感器)
09:05	180	70.0	0.698	晴	假设@09:05 手动 (未用传感器)
10:10	180	70.0	0.698	晴	假设@10:10 手动 (未用传感器)
11:20	180	70.0	0.698	晴	假设@11:20 手动 (未用传感器)
12:25	180	70.0	0.698	晴	假设@12:25 手动 (未用传感器)
13:15	180	70.0	0.698	晴	假设@13:15 手动 (未用传感器)
14:05	180	70.0	0.698	晴	假设@14:05 手动 (未用传感器)
15:10	180	70.0	0.698	晴	假设@15:10 手动 (未用传感器)
总计	1440.0 (8次)	560.0			建议进液EC: 1990, PH: 6.0

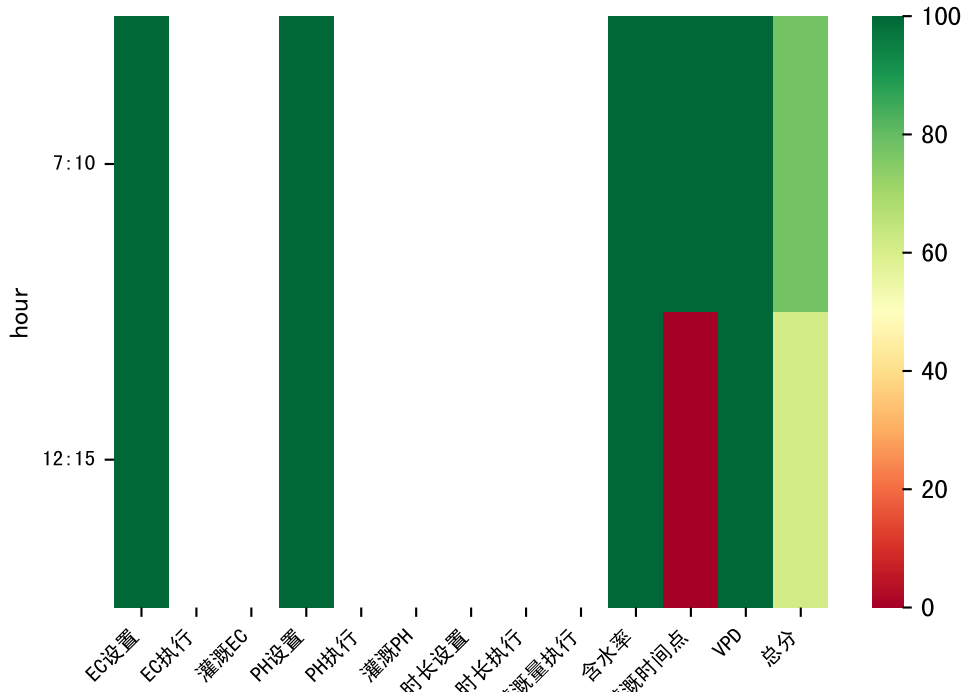
滴头平均流速偏小 (0.13 vs def 0.5), 请检查
上次灌溉时长未按模型建议 (180 vs 538.0)
默认实际灌溉23.0 ml.



时间	灌溉时长(秒)	灌溉量(毫升/株)	灌溉总量(方/次)	天气	注释
07:10	180	60.0	0.598	多云	假设@07:10 手动 (未用传感器)
09:05	180	60.0	0.598	晴	假设@09:05 手动 (未用传感器)
10:00	180	60.0	0.598	晴	假设@10:00 手动 (未用传感器)
11:00	180	60.0	0.598	晴	假设@11:00 手动 (未用传感器)
12:10	180	60.0	0.598	晴	假设@12:10 手动 (未用传感器)
13:05	180	60.0	0.598	晴	假设@13:05 手动 (未用传感器)
13:55	180	60.0	0.598	晴	假设@13:55 手动 (未用传感器)
14:55	180	60.0	0.598	晴	假设@14:55 手动 (未用传感器)
总计	1440.0 (8次)	480.0			建议进液EC: 1990, PH: 6.0

滴头平均流速偏小 (0.13 vs def 0.5), 请检查
上次灌溉时长未按模型建议 (182 vs 462.0)
默认实际灌溉24.0 ml.





时间	灌溉时长(秒)	灌溉量(毫升/株)	灌溉总量(方/次)	天气	注释
07:10	180	60.0	0.598	阴	假设@07:10 手动 (未用传感器)
12:15	180	60.0	0.598	多云	假设@12:15 手动 (未用传感器)
总计	360.0 (2次)	120.0			建议进液EC: 2160, PH: 6.0

滴头平均流速偏小 (0.13 vs def 0.5), 请检查
上次灌溉时长未按模型建议 (182 vs 462.0)
默认实际灌溉24.0 ml.

