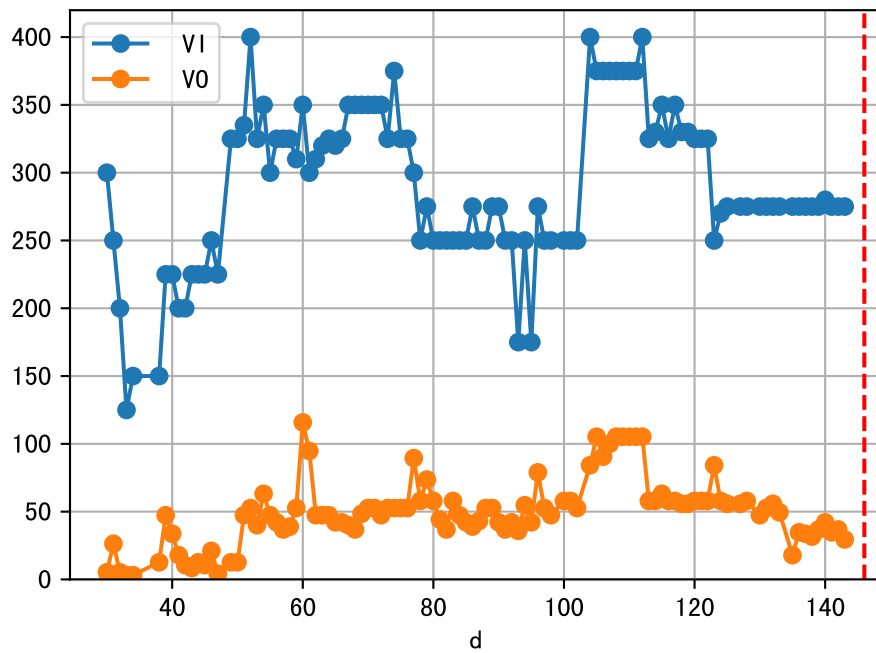
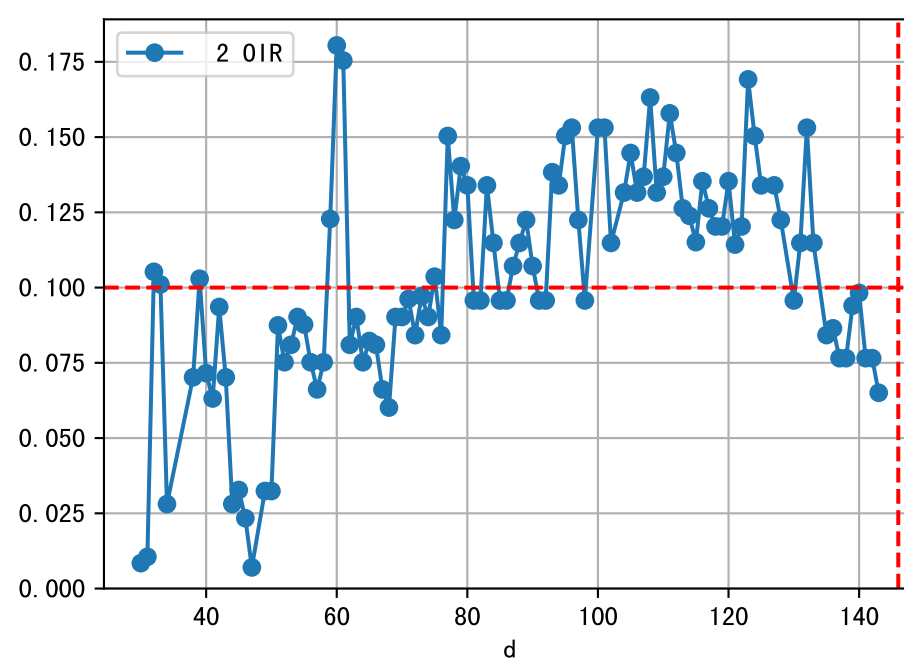
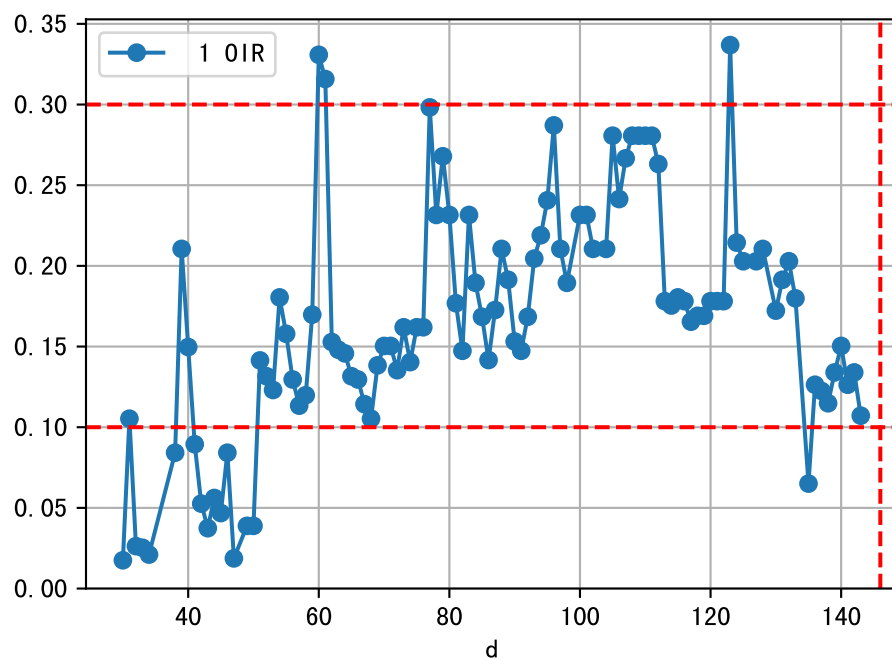
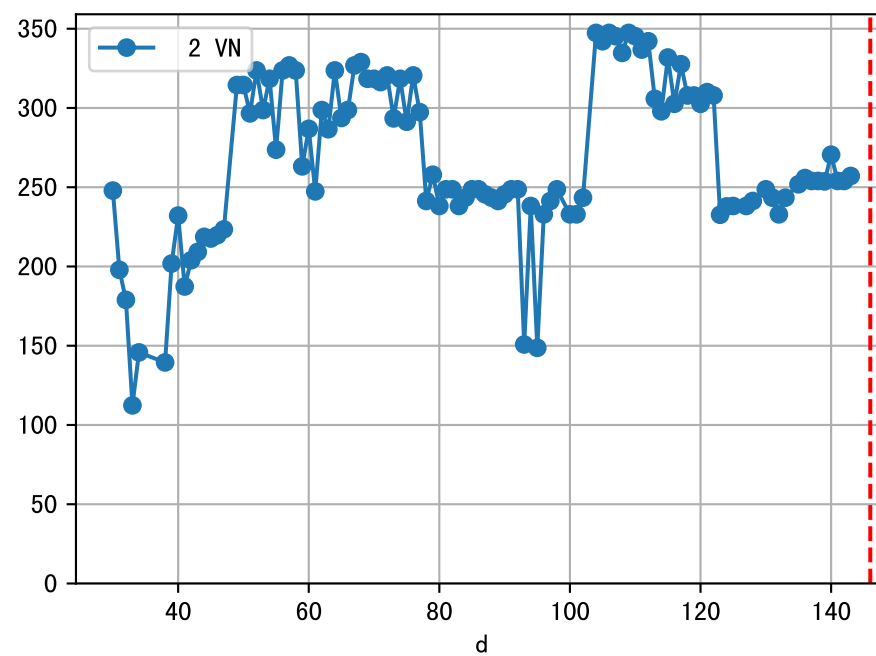
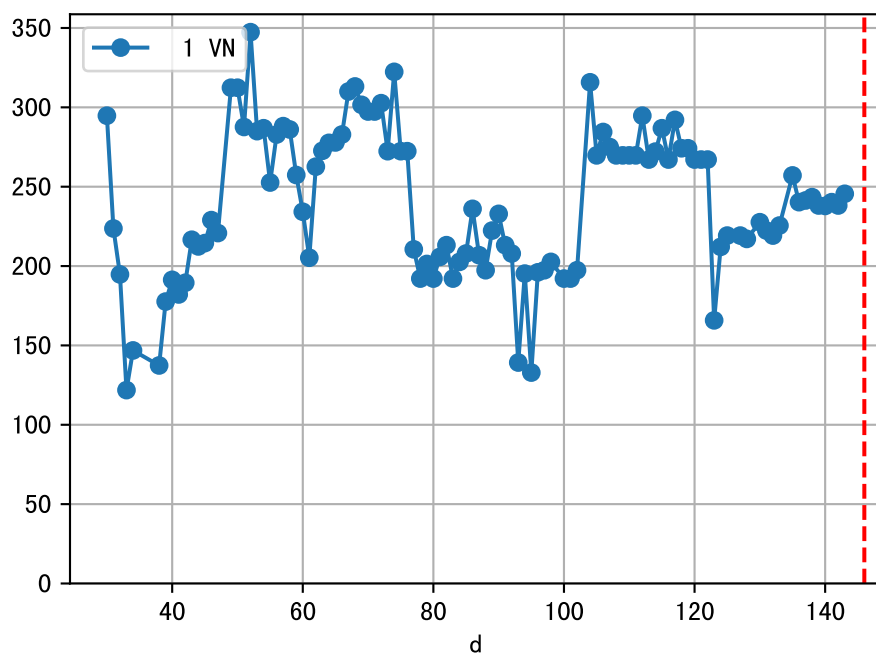
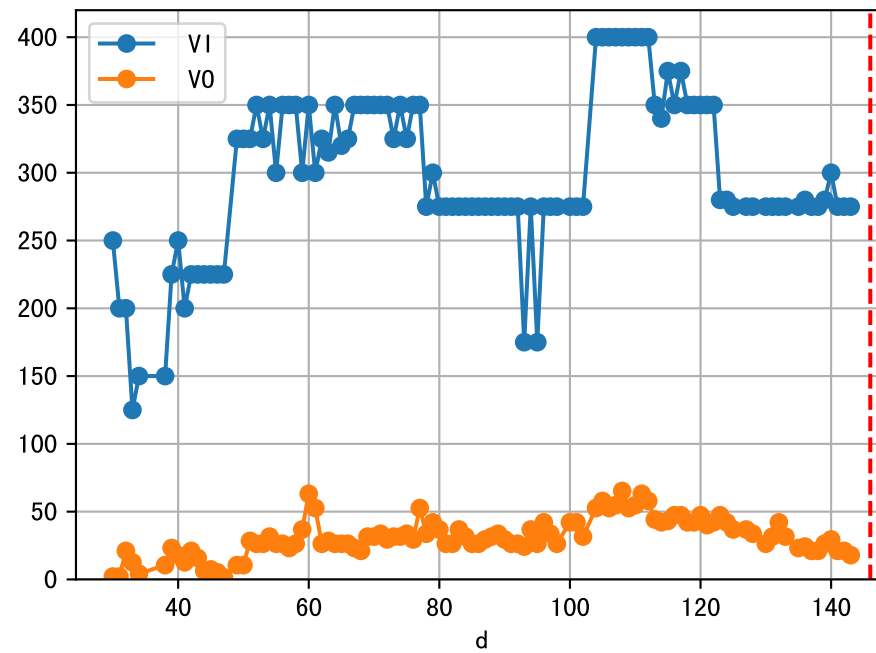


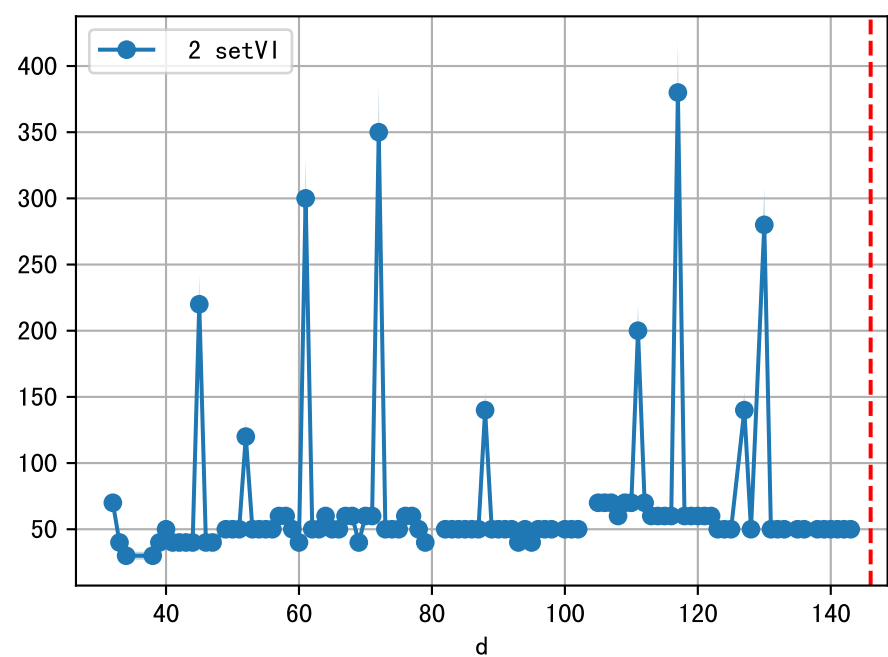
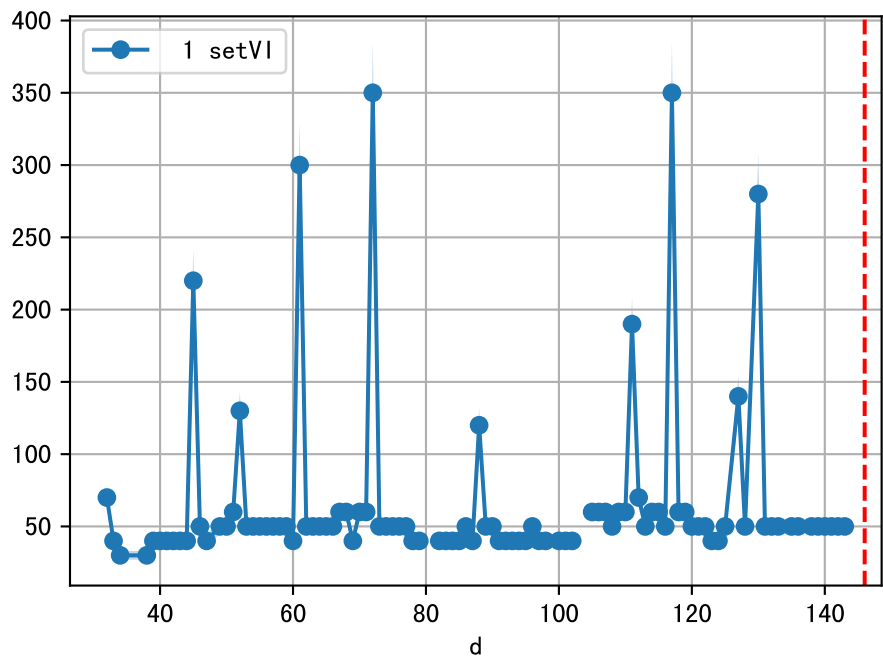
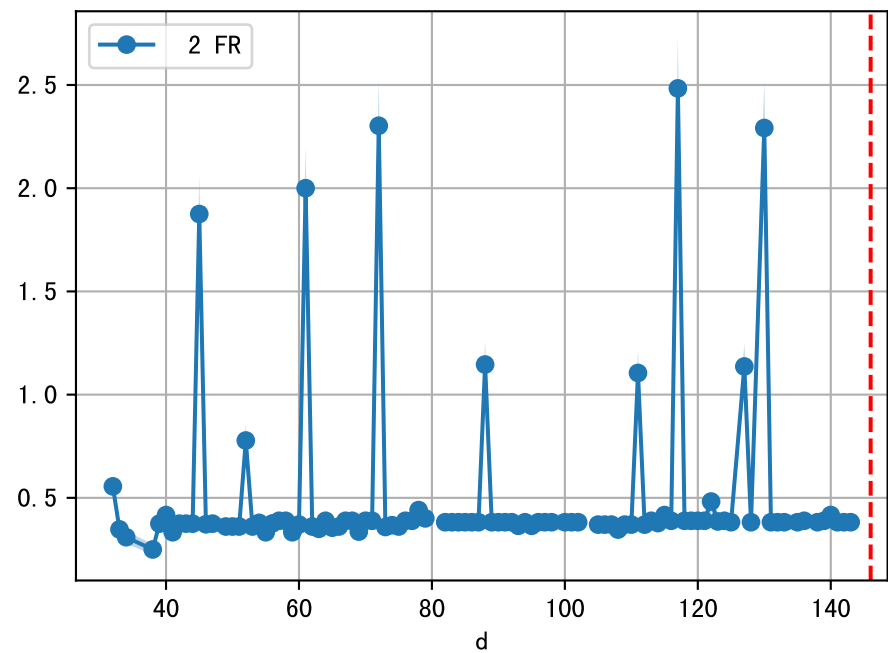
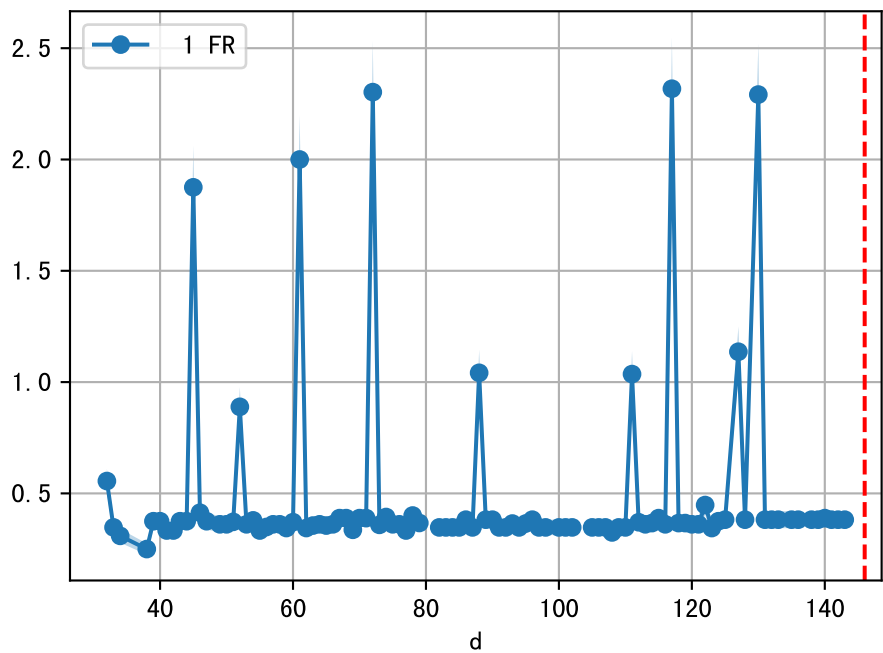
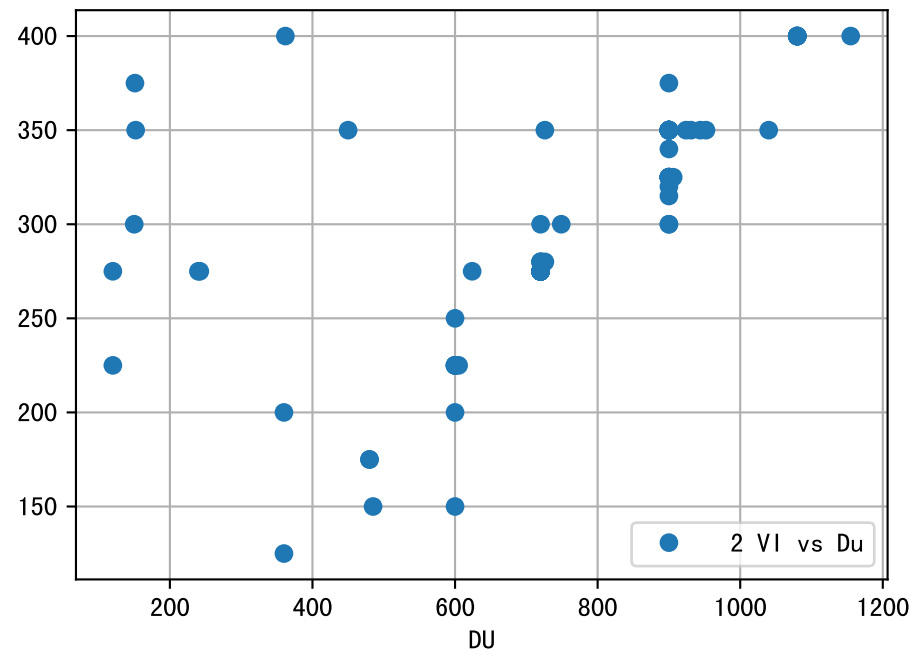
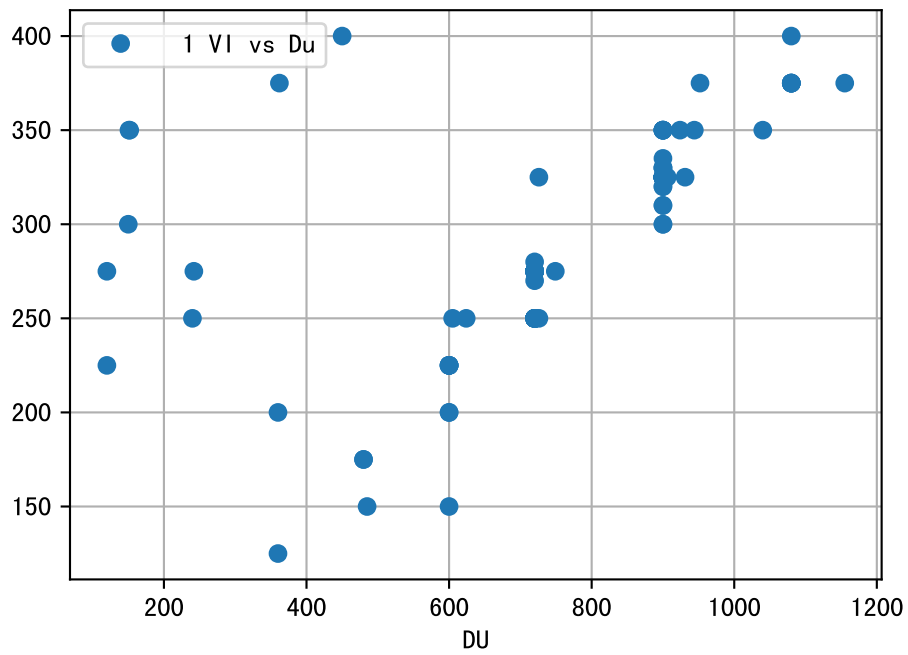
FgArea: [' 0']
SS40 XX8
2026-02-01 (Day 146)

fgNum 1 (at_row = 3)

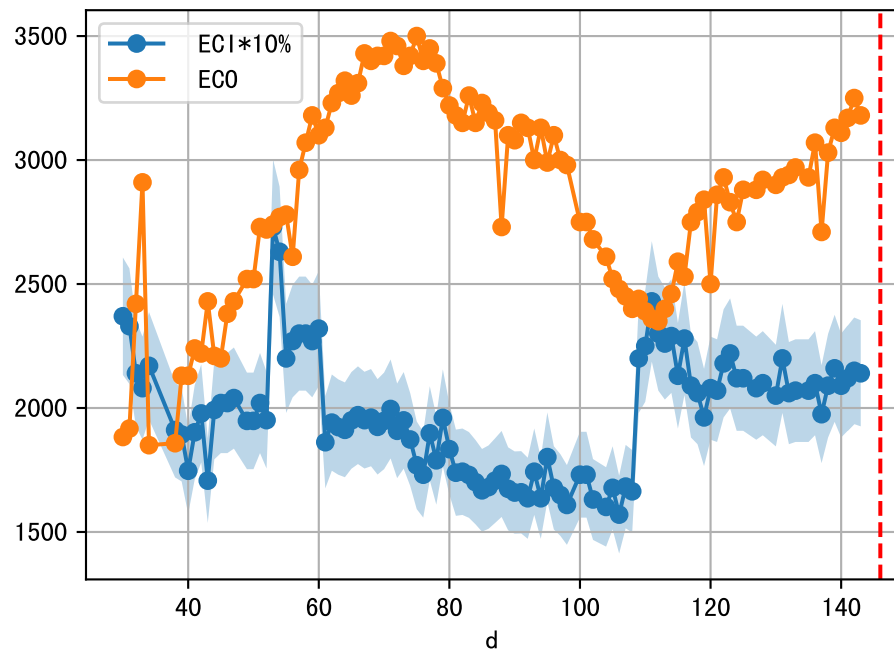


fgNum 2 (at_row = 35)

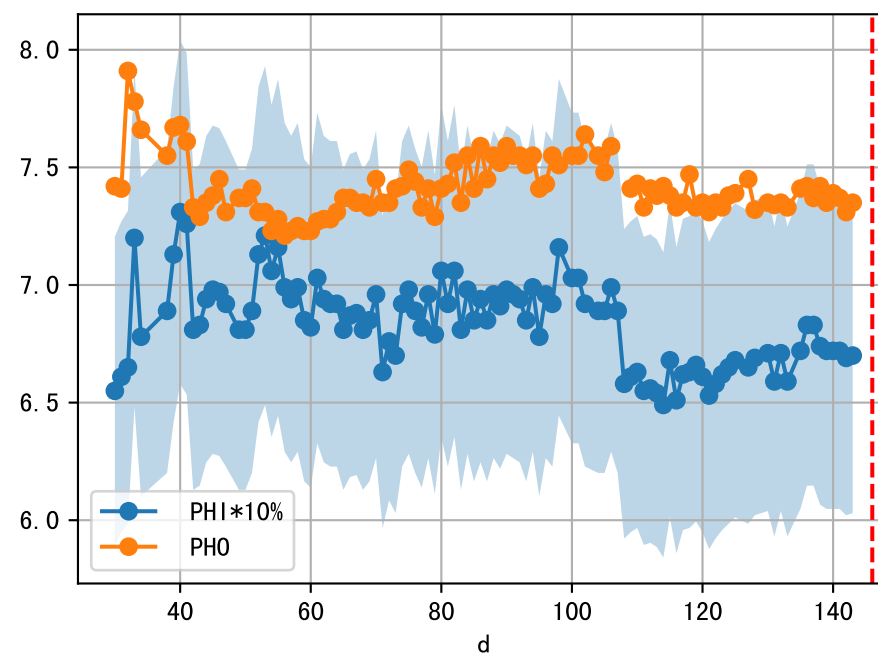
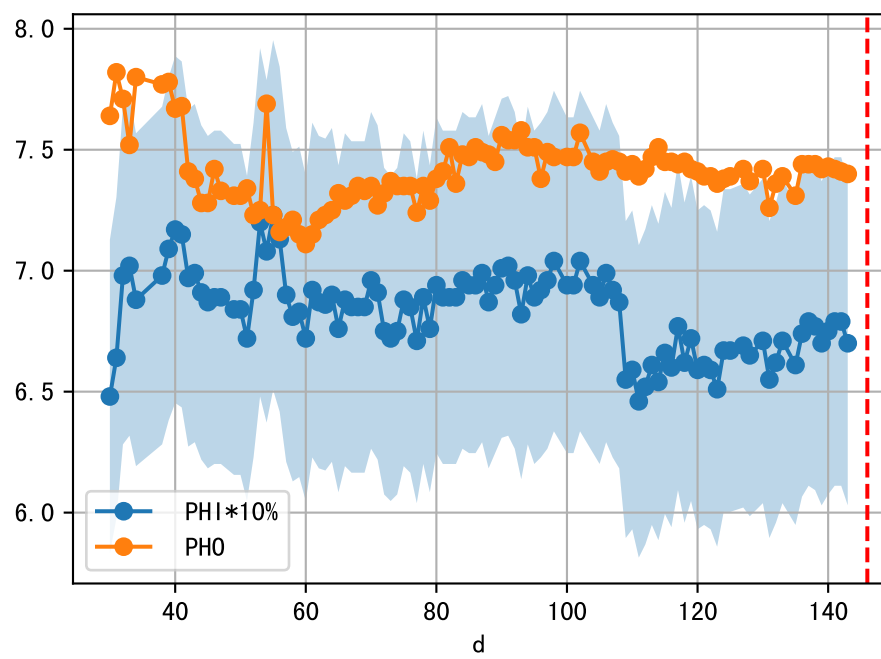
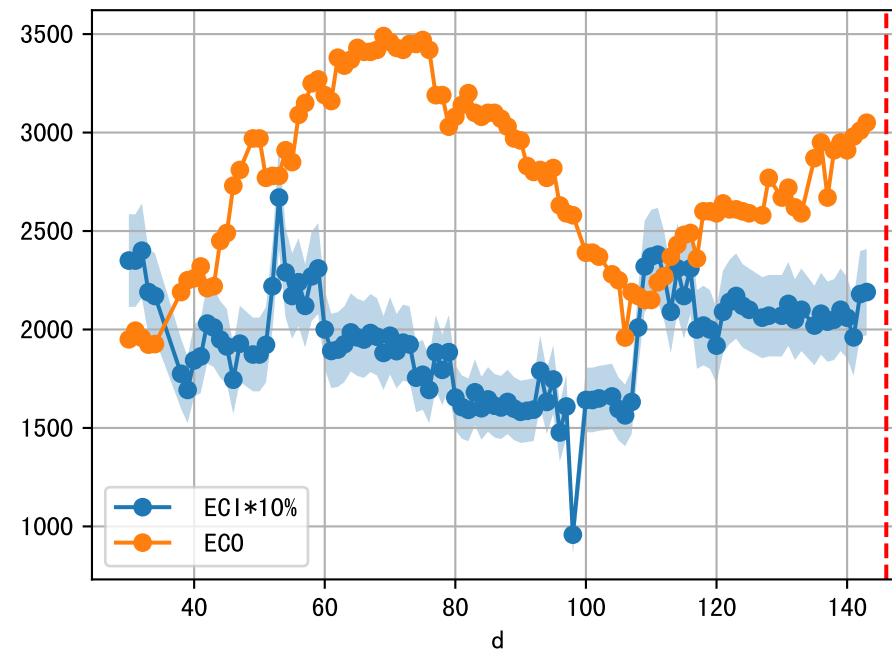




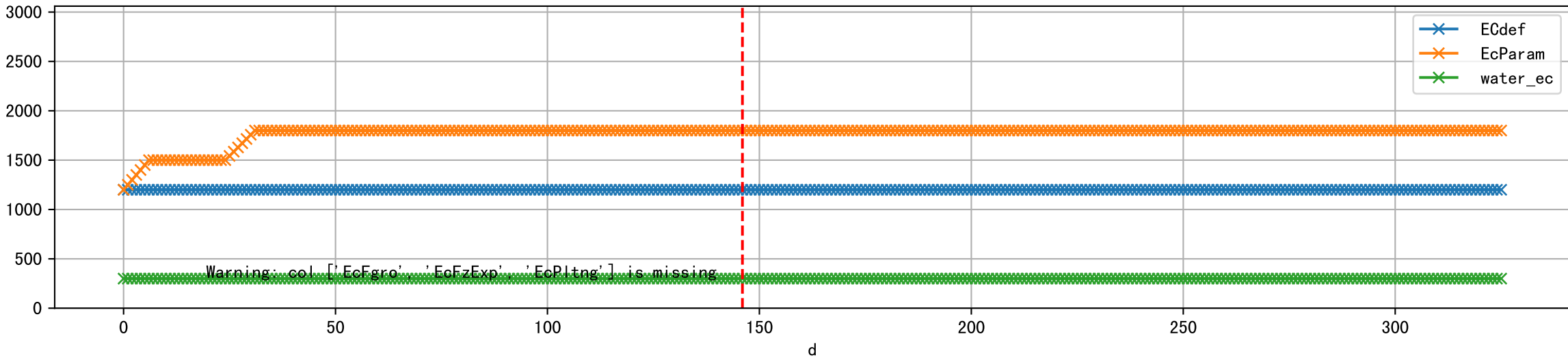
1 (fgArea = NA)



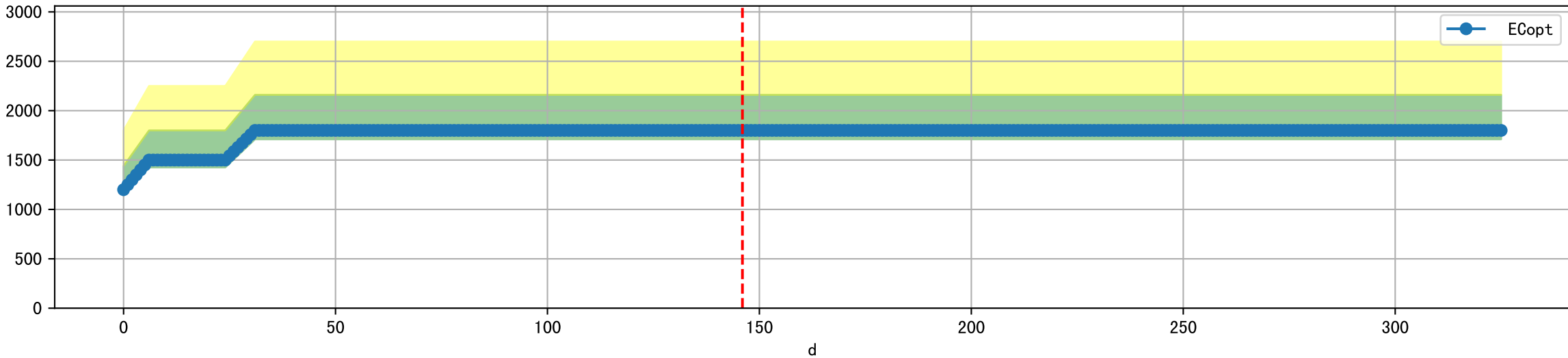
2 (fgArea = NA)



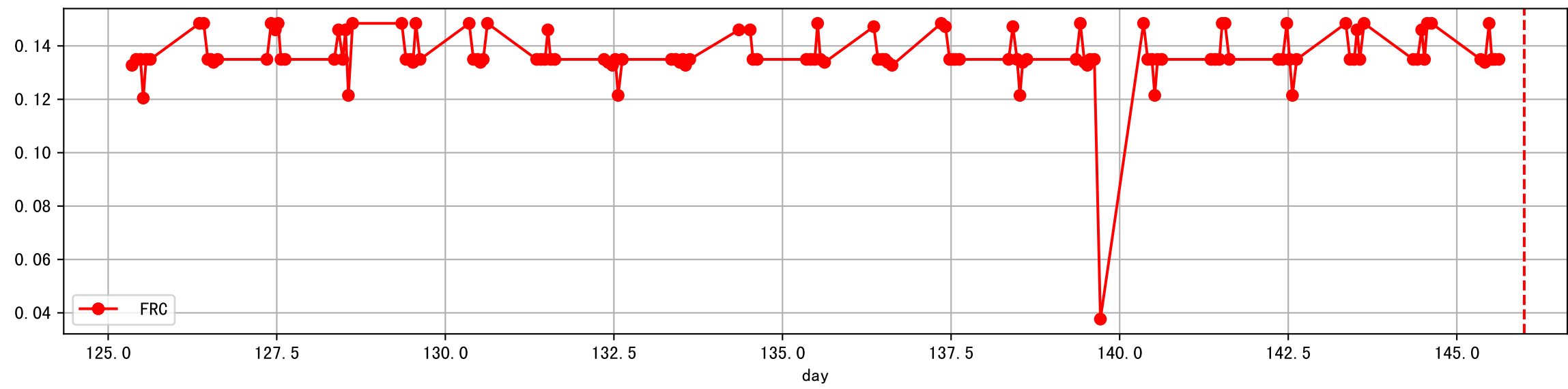
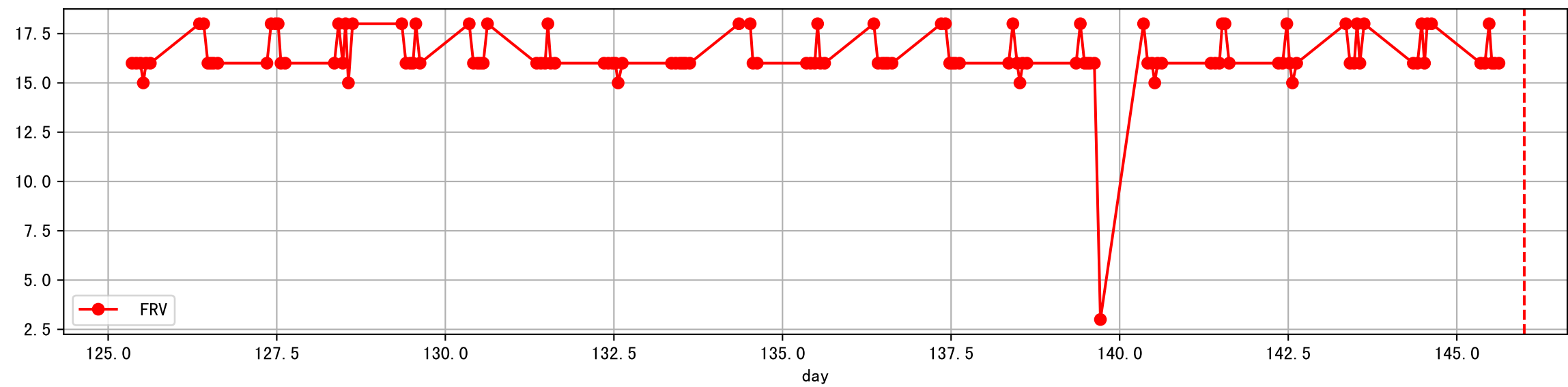
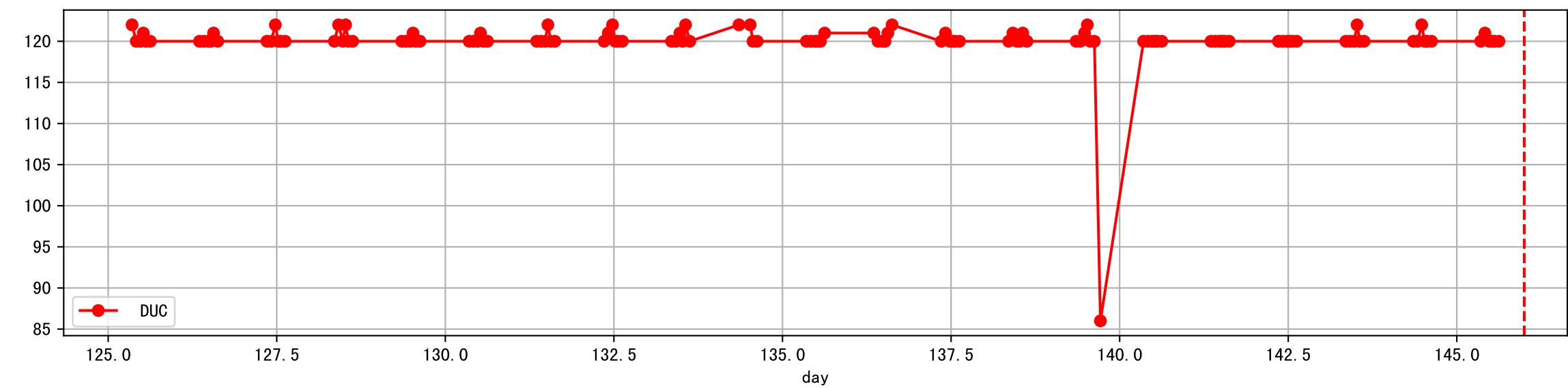
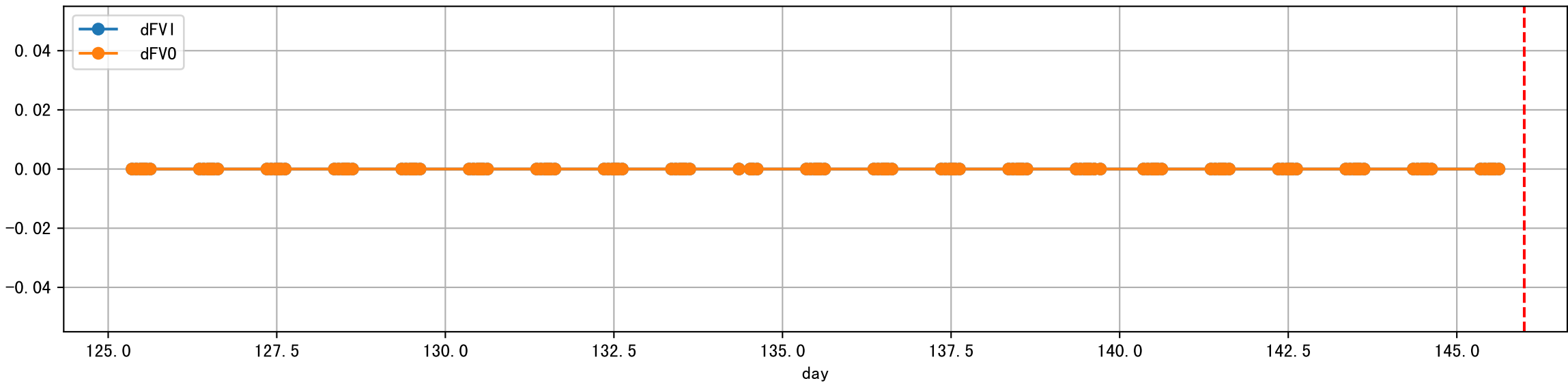
Plot [['EcFgro', 'EcFzExp', 'EcPltng', 'ECdef', 'EcParam', 'water_ec']]



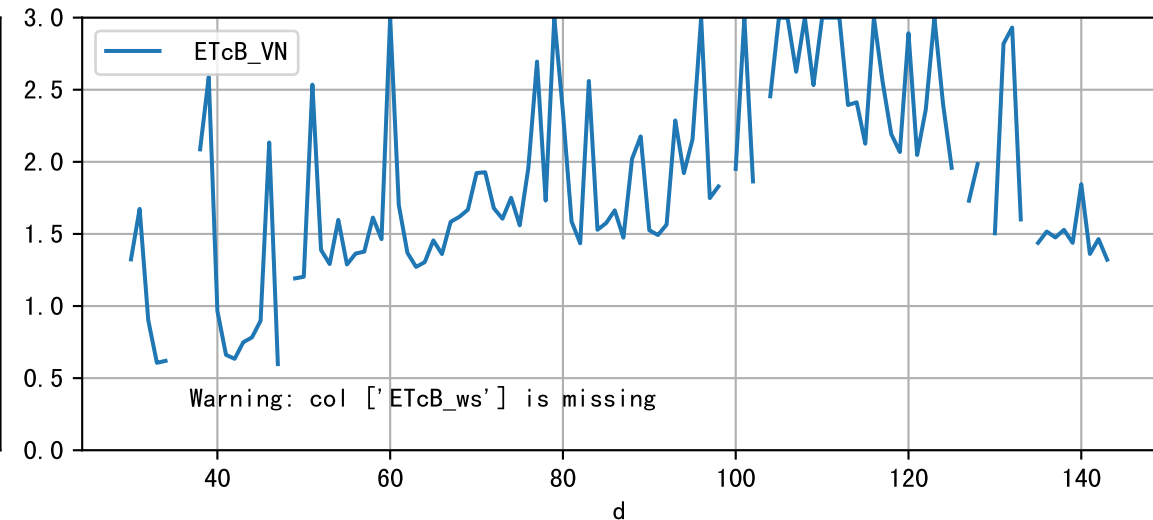
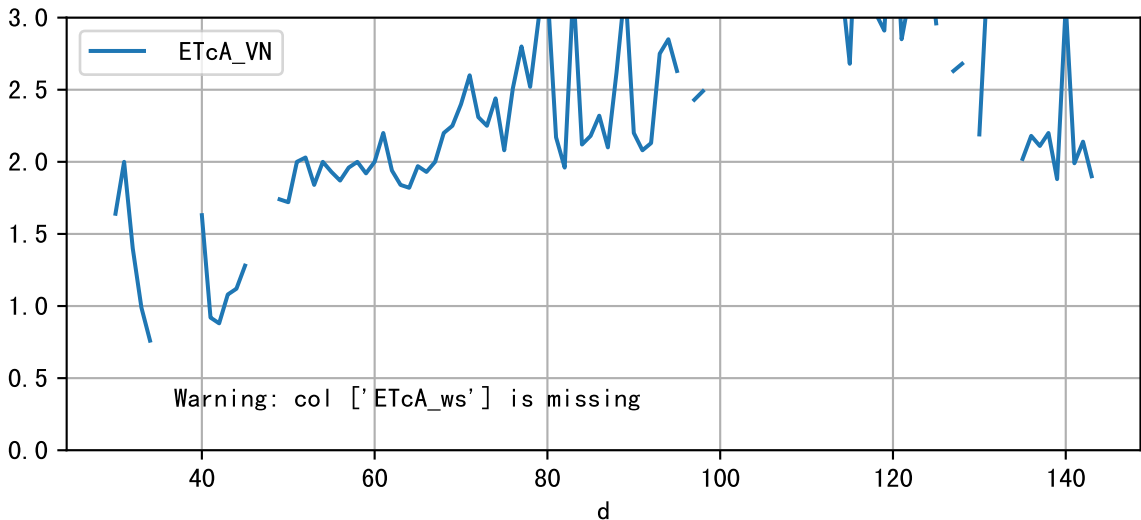
Plot [' ECopt']



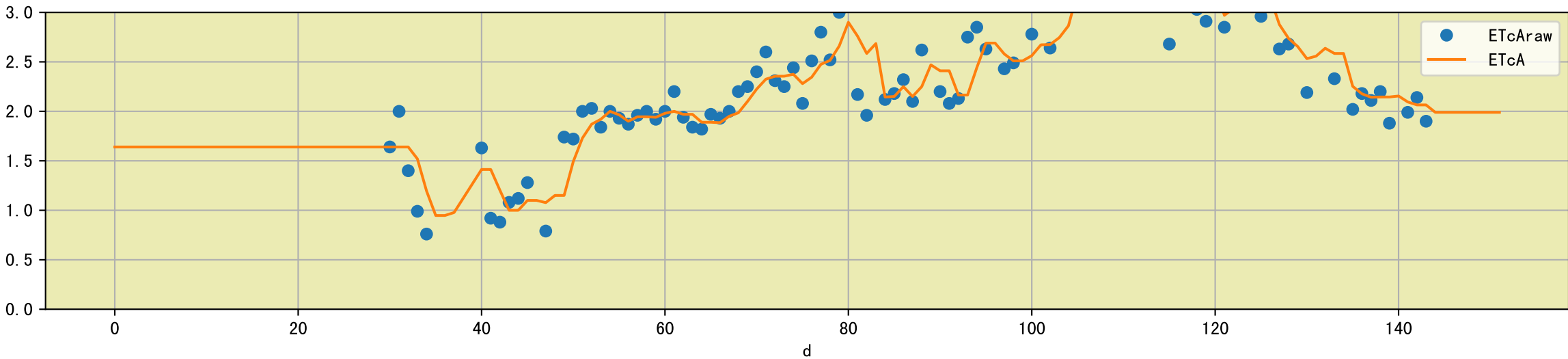
Plot Sensor and FgRec Data



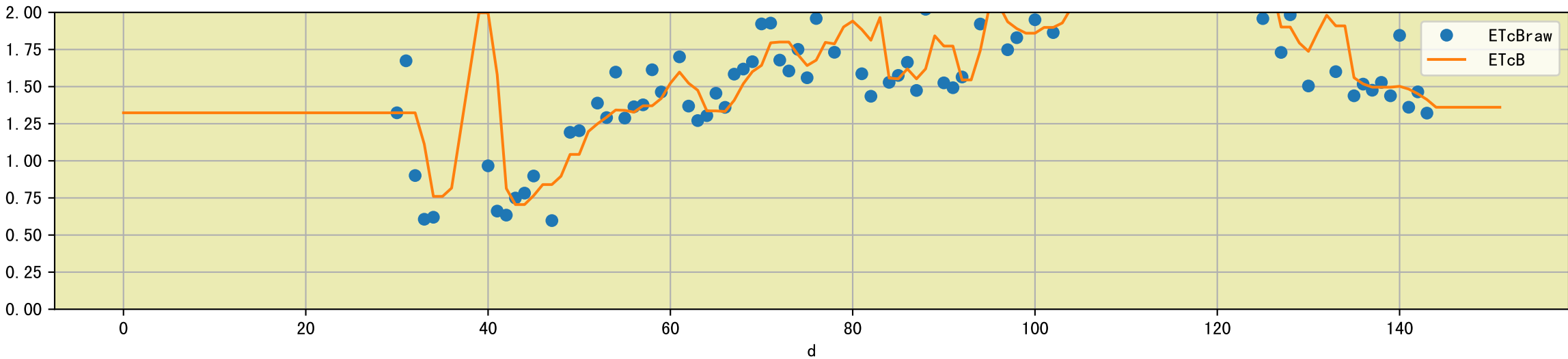
Plot [['ETcA_VN', 'ETcA_ws'], ['ETcB_VN', 'ETcB_ws']]

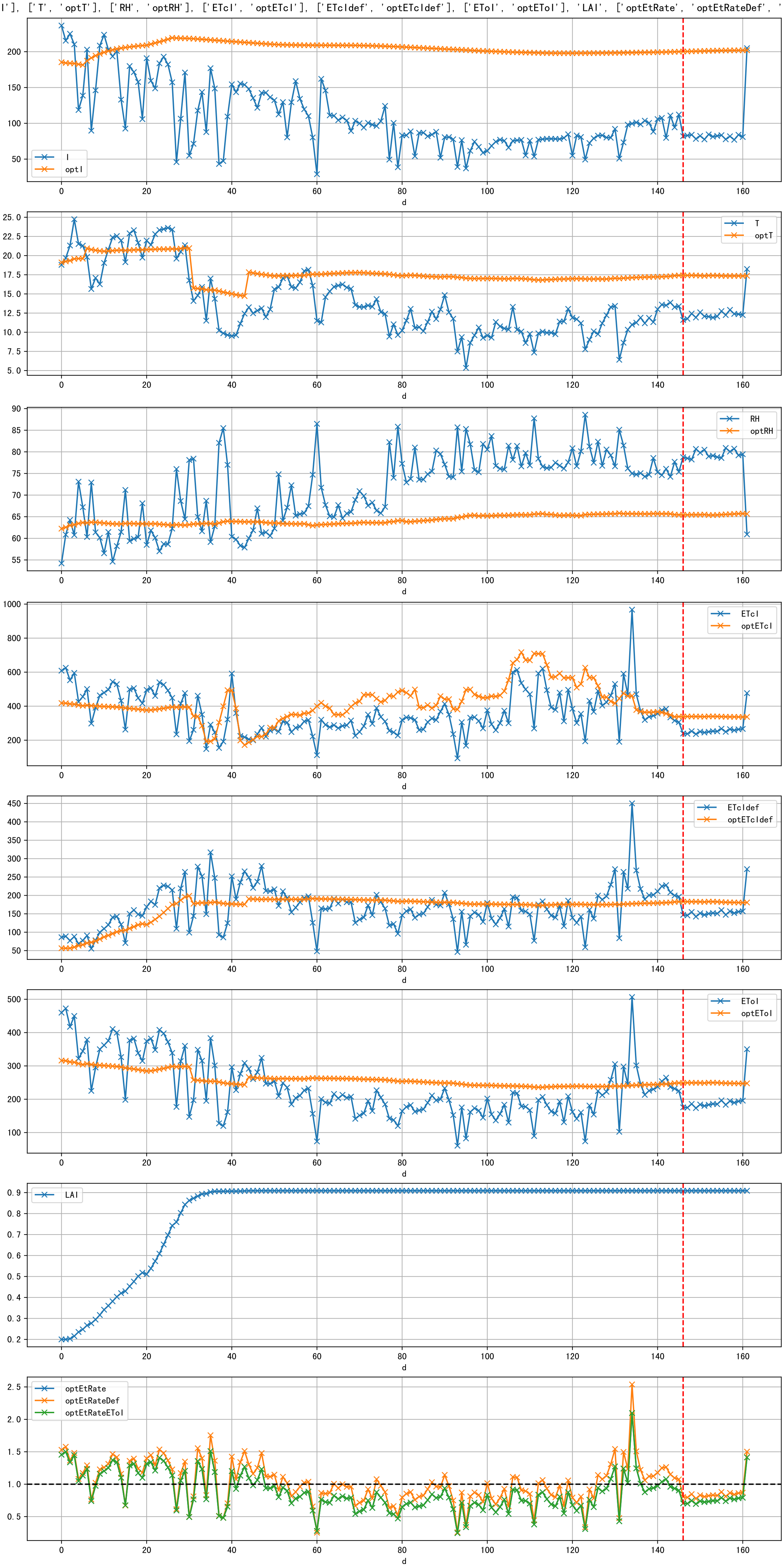


Plot [['ETcAraw:o', 'ETcA']]

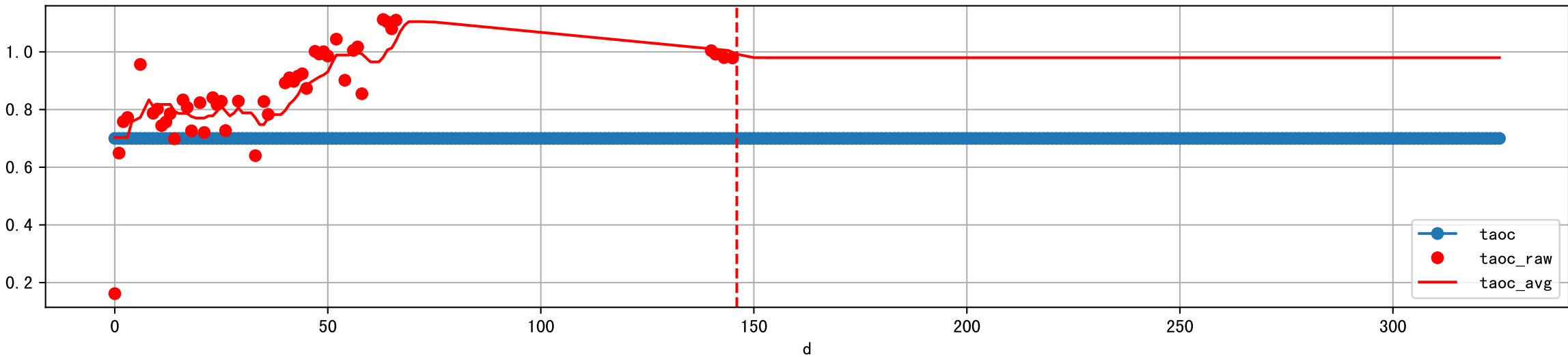


Plot [['ETcBraw:o', 'ETcB']]

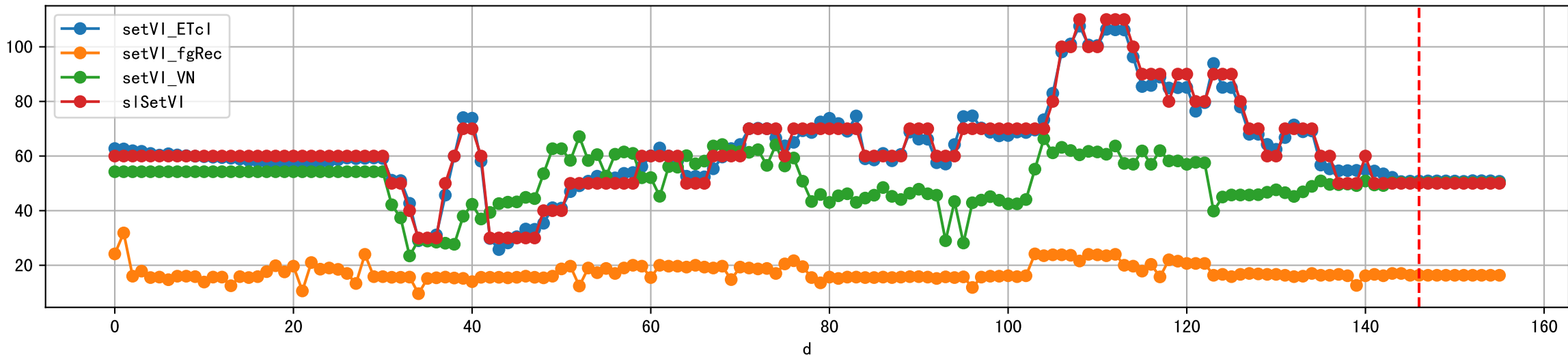




Plot [['taoc', 'taoc_raw:ro', 'taoc_avg:r-']]

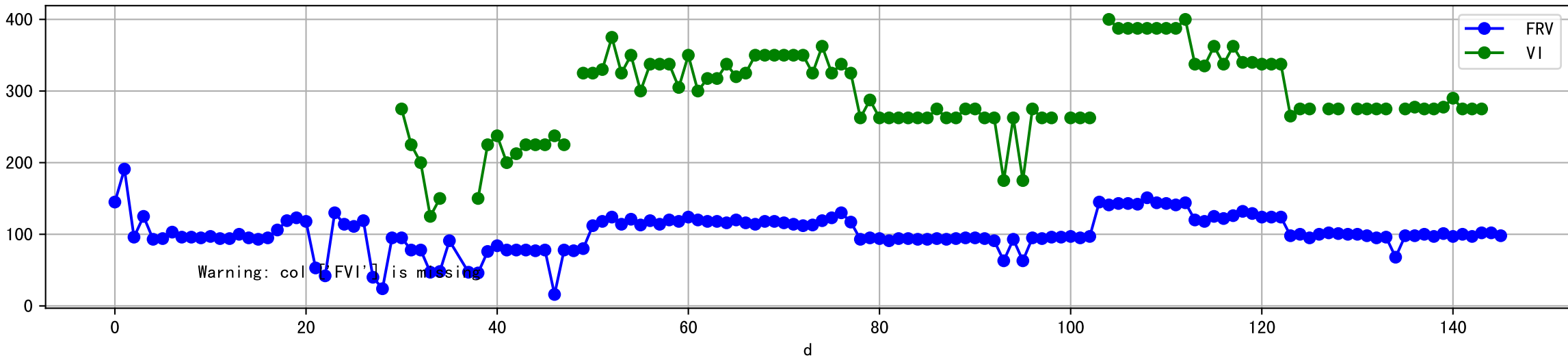


Plot [['setVI_ETcI', 'setVI_fgRec', 'setVI_VN', 'sISetVI']]

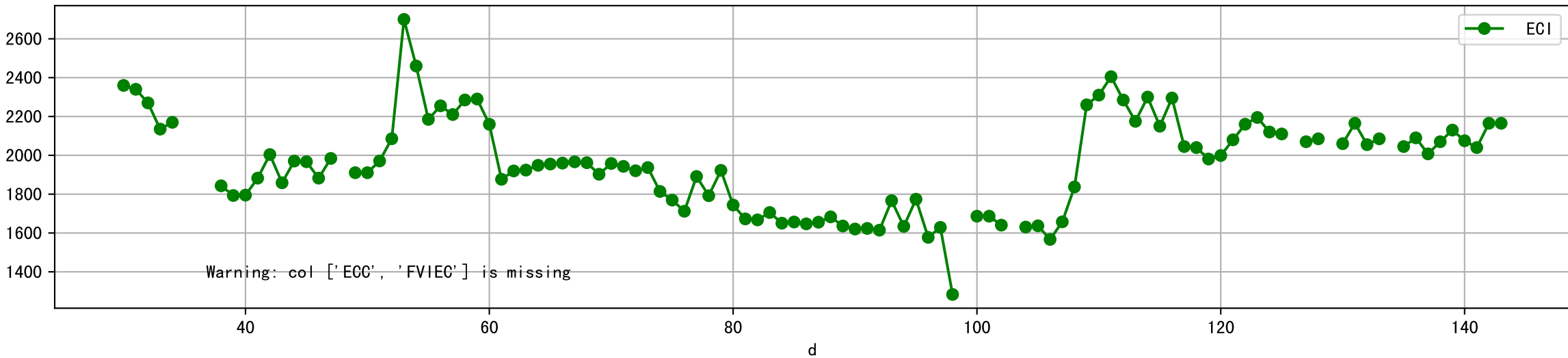




Plot [['FRV:b-o', 'FVI:r-o', 'VI:g-o']]

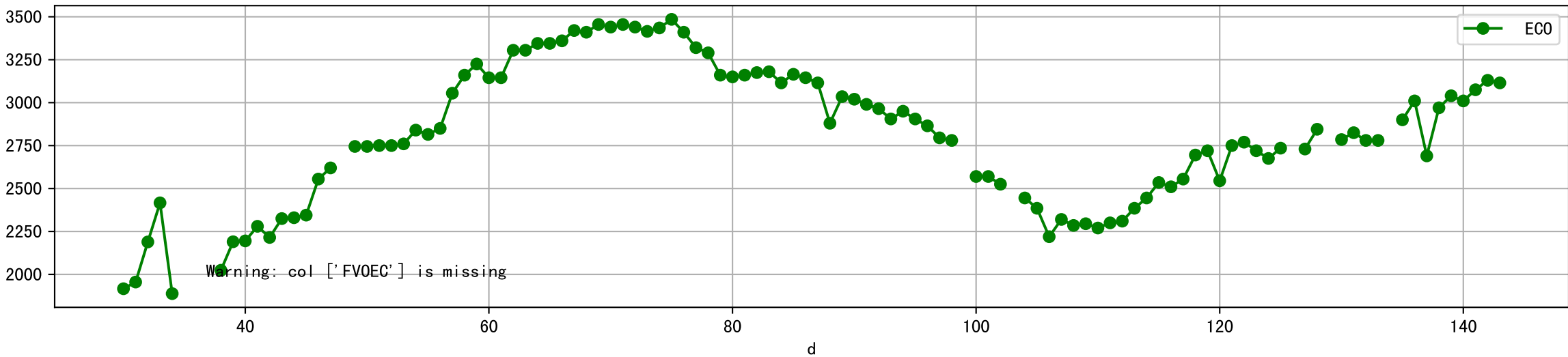


Plot [['ECC:b-o', 'FVIEC:r-o', 'ECI:g-o']]

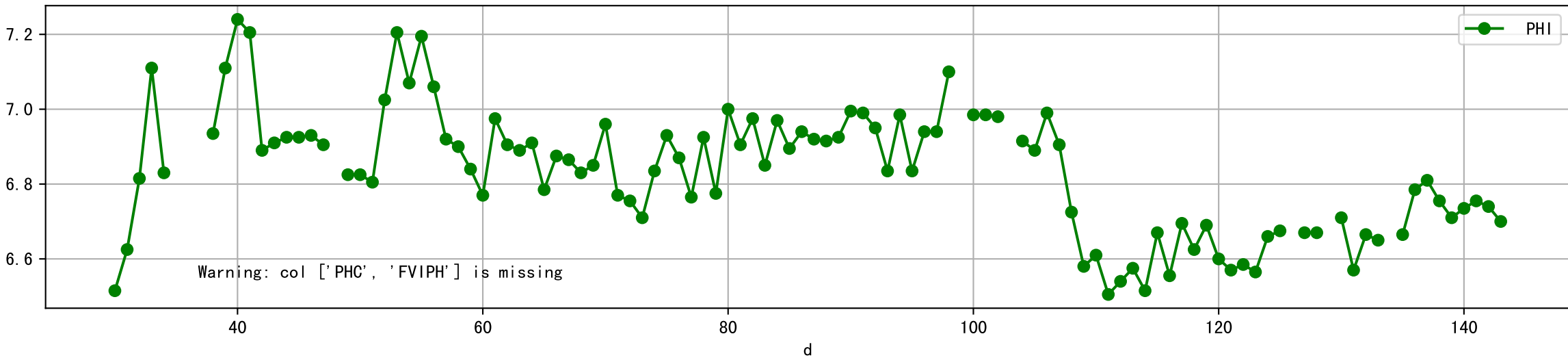


Warning: col ['ECC', 'FVIEC'] is missing

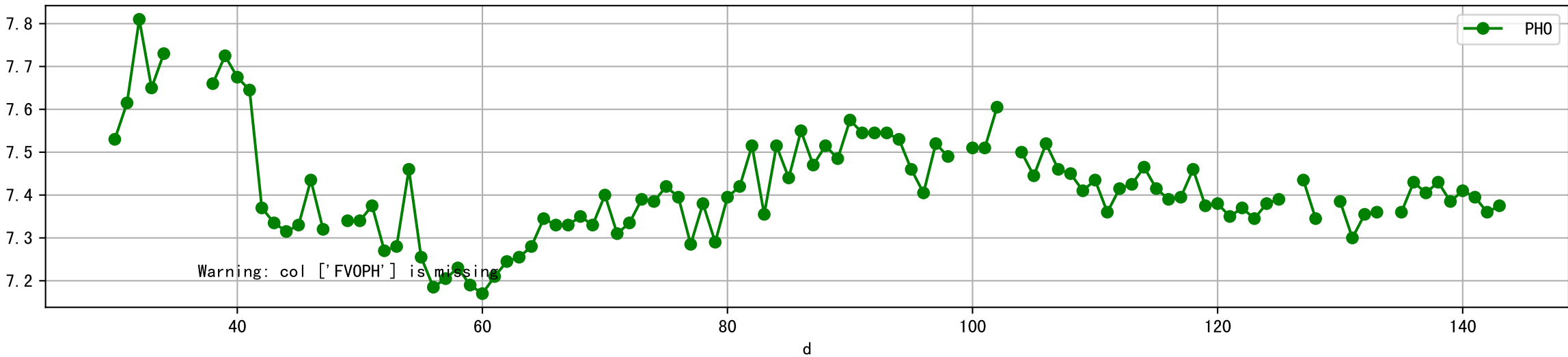
Plot [[' FVOEC:r-o' , ' ECO:g-o']]



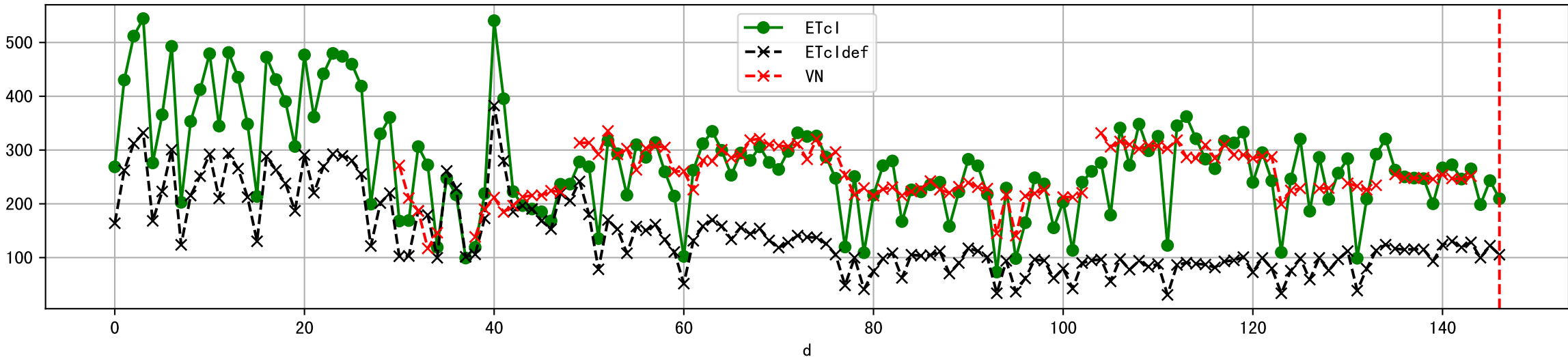
Plot [['PHC:b-o', 'FVIPH:r-o', 'PHI:g-o']]



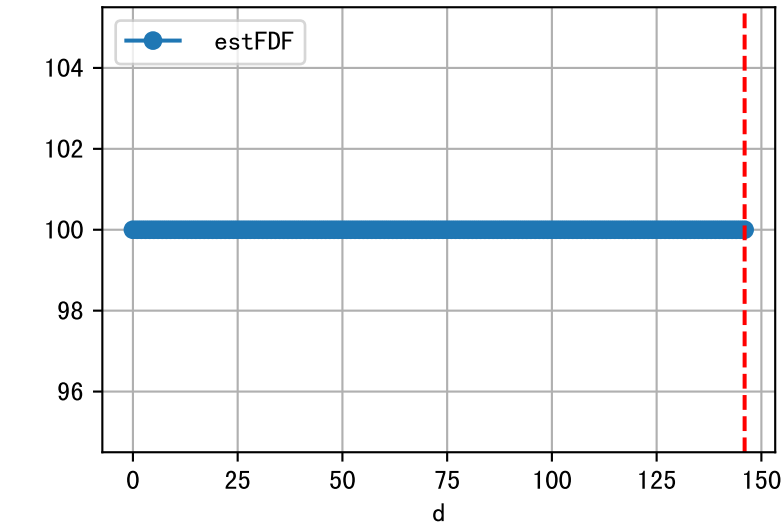
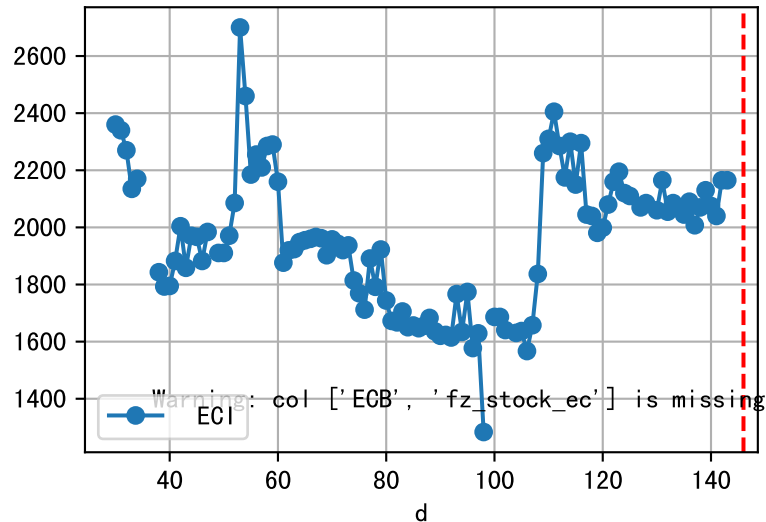
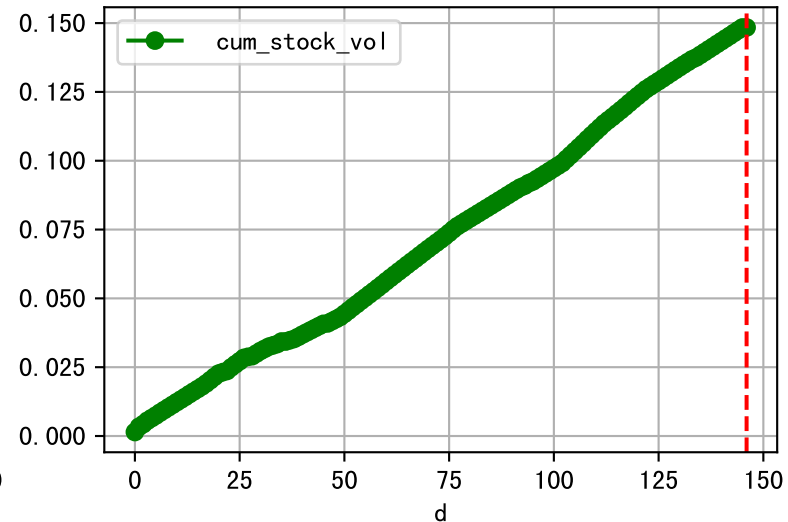
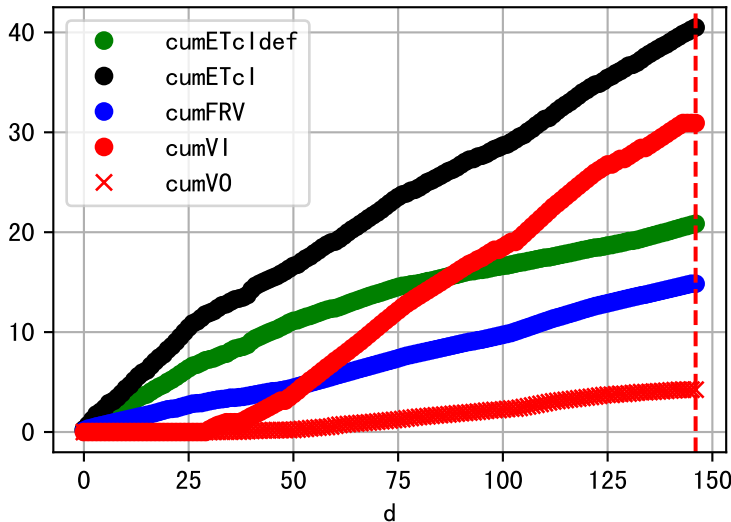
Plot [[' FVOPH:r-o' , ' PH0:g-o']]



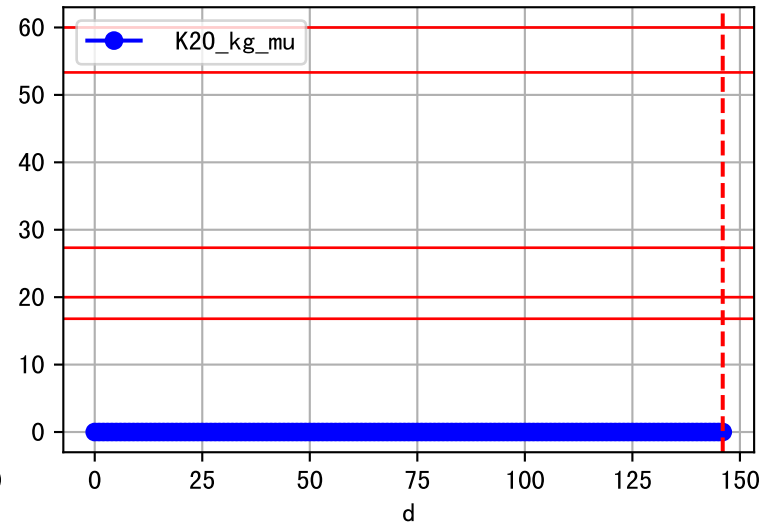
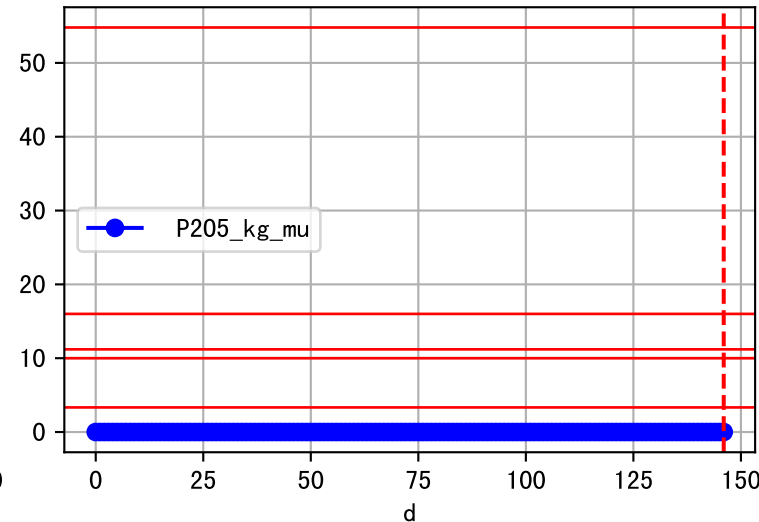
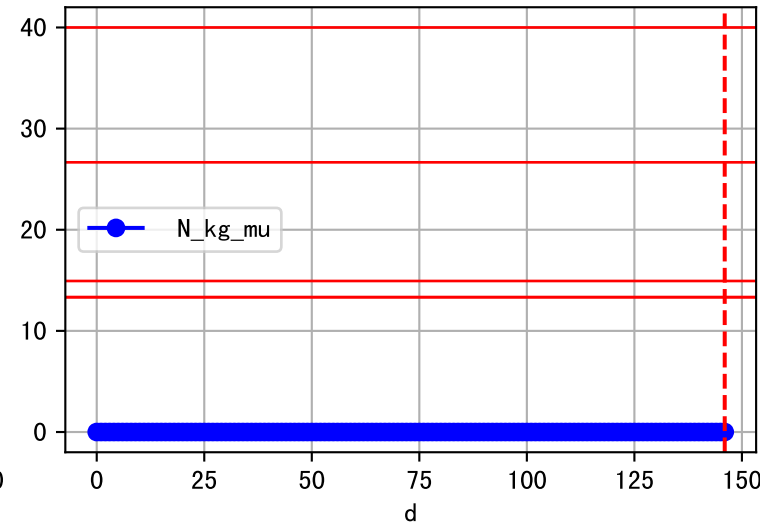
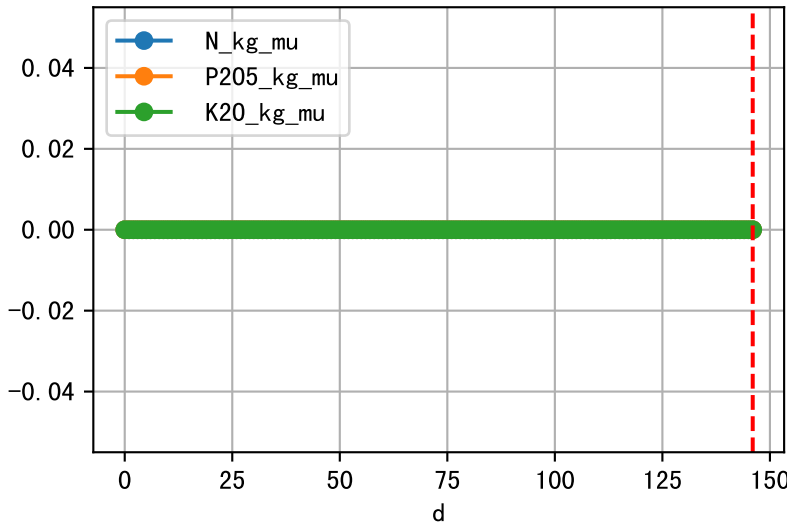
Plot ET/VN



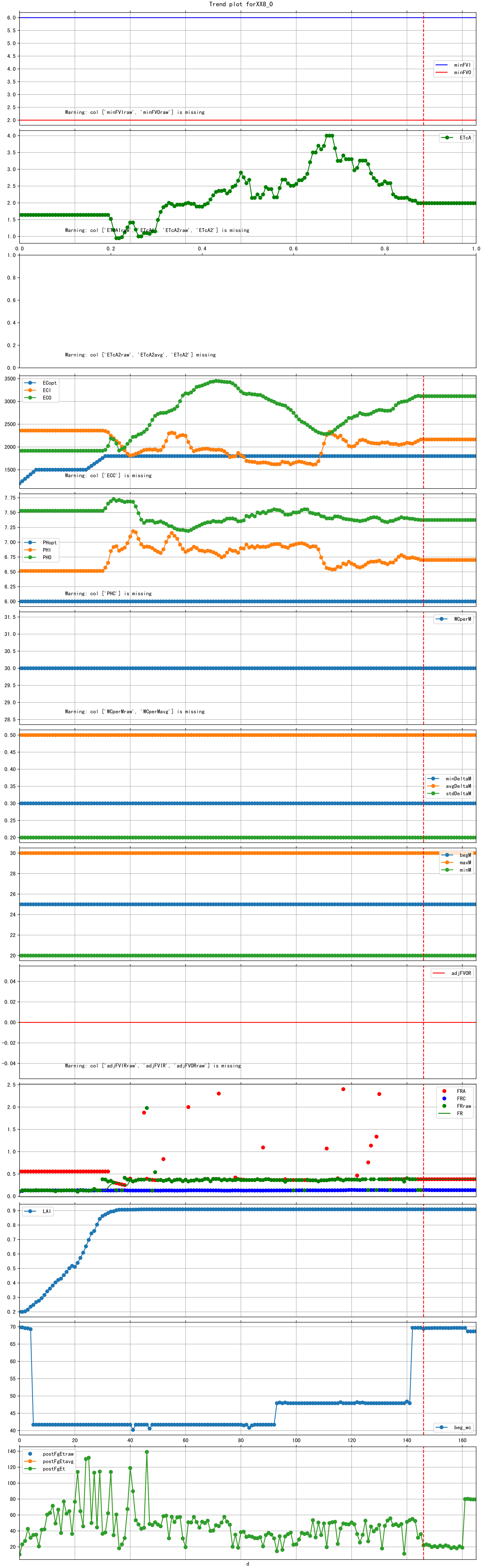
Plot Fv and fertilizer usage

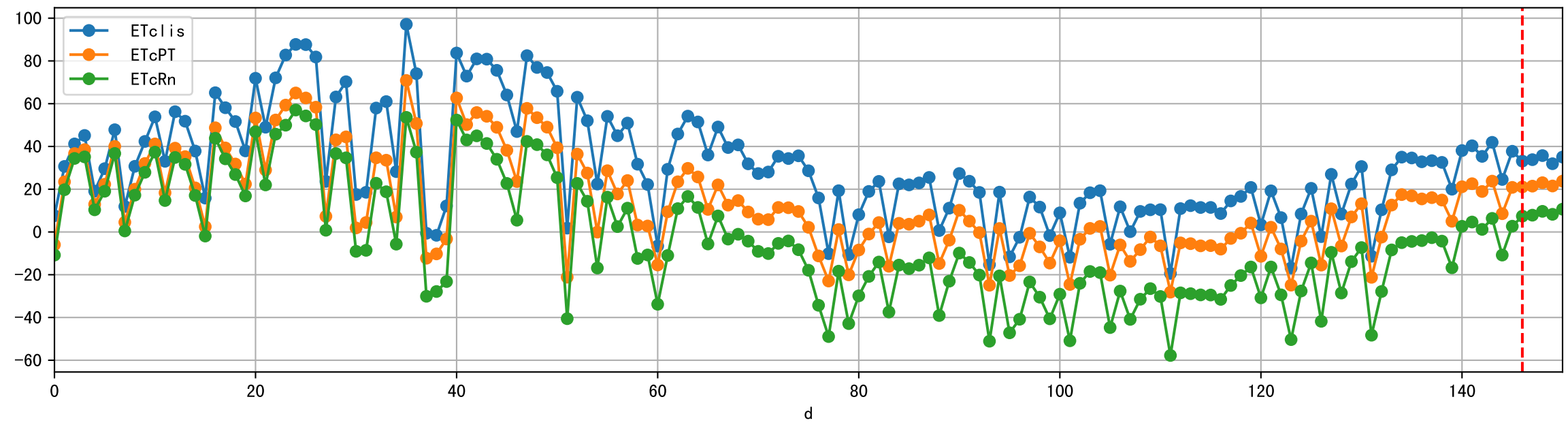
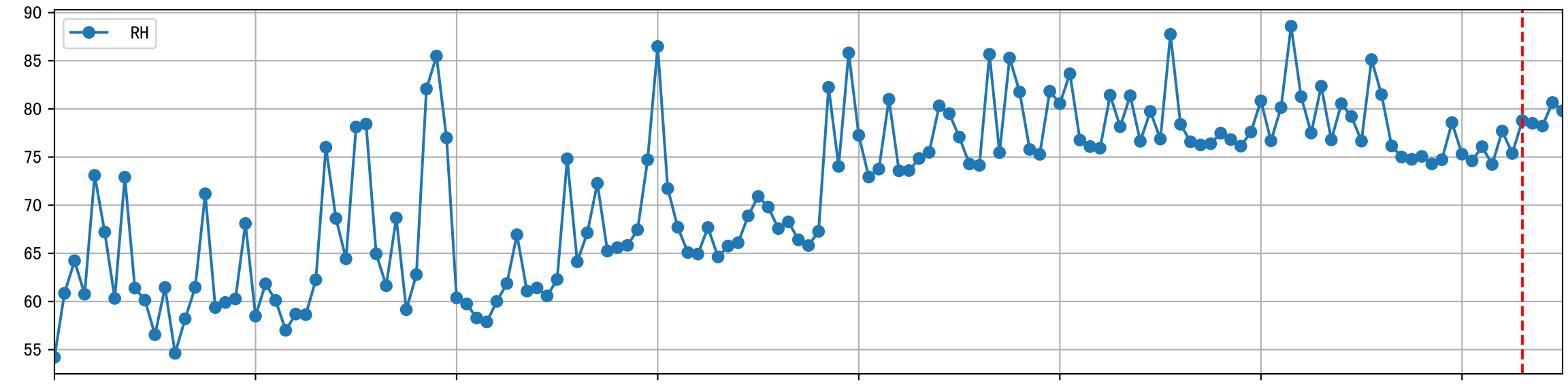
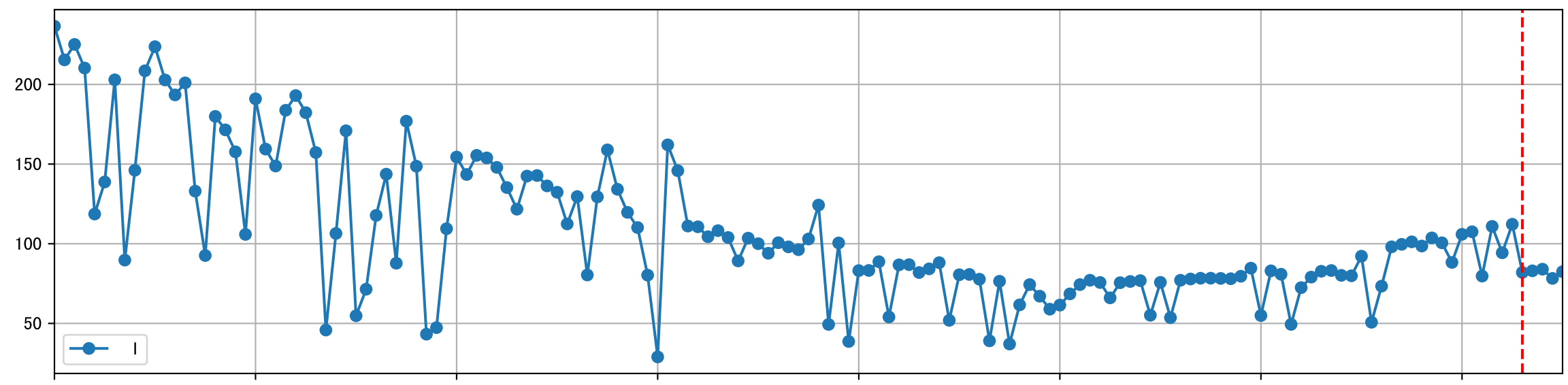
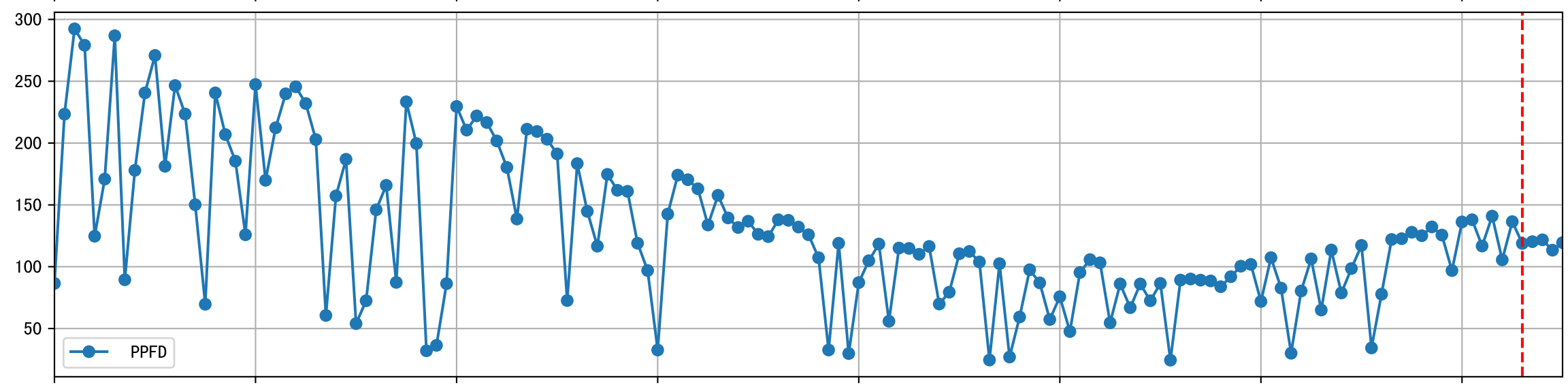
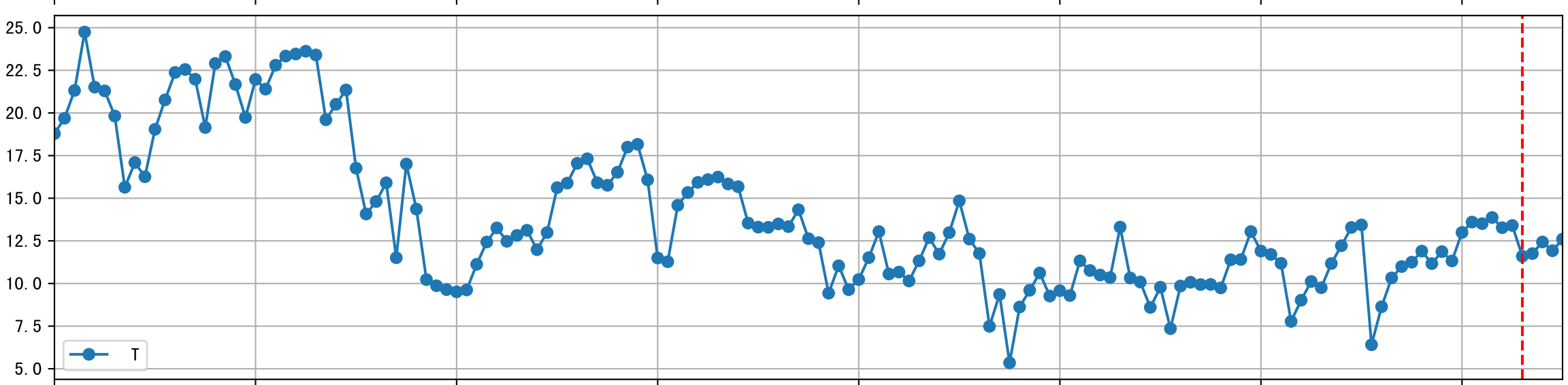
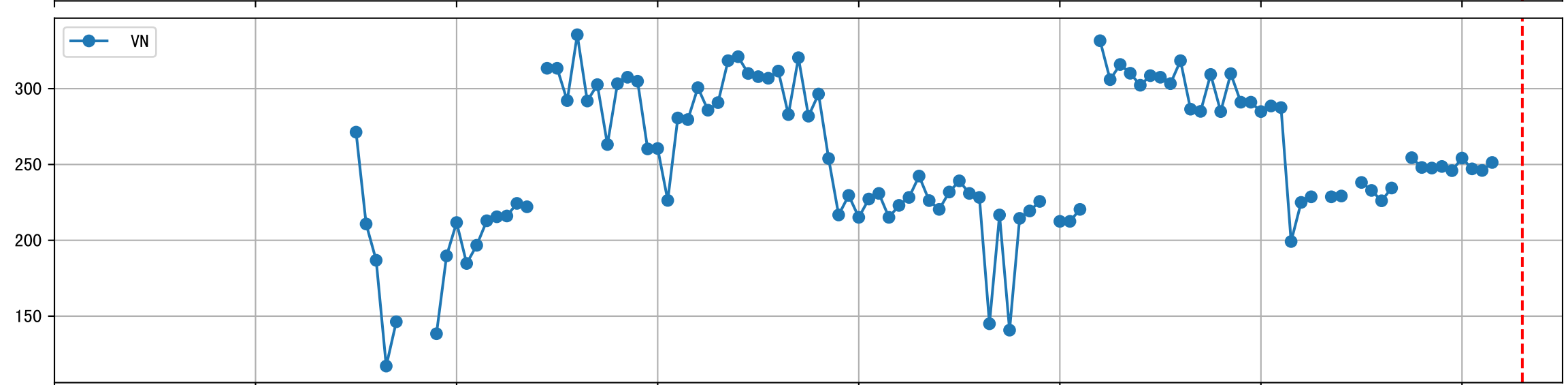
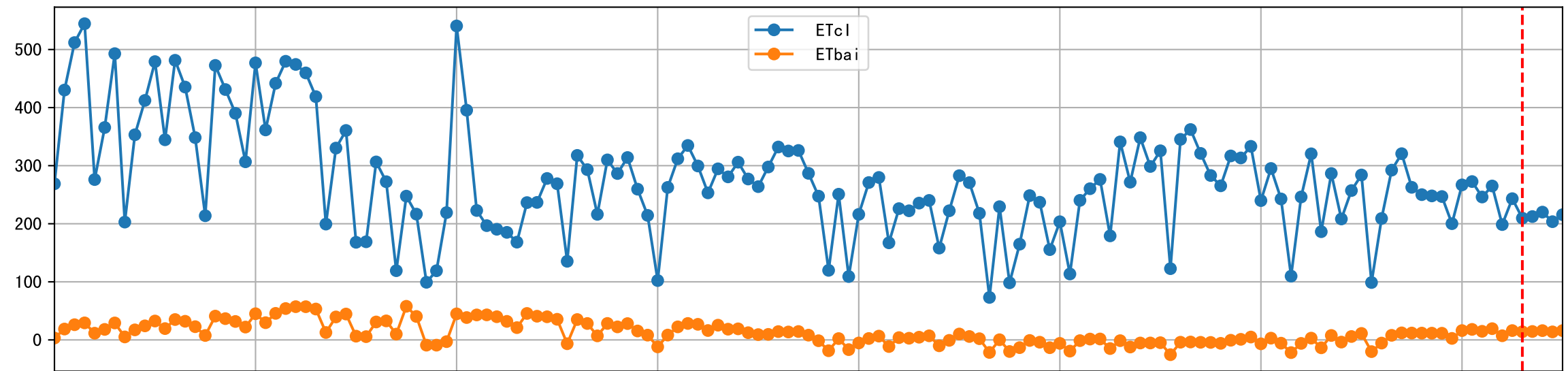


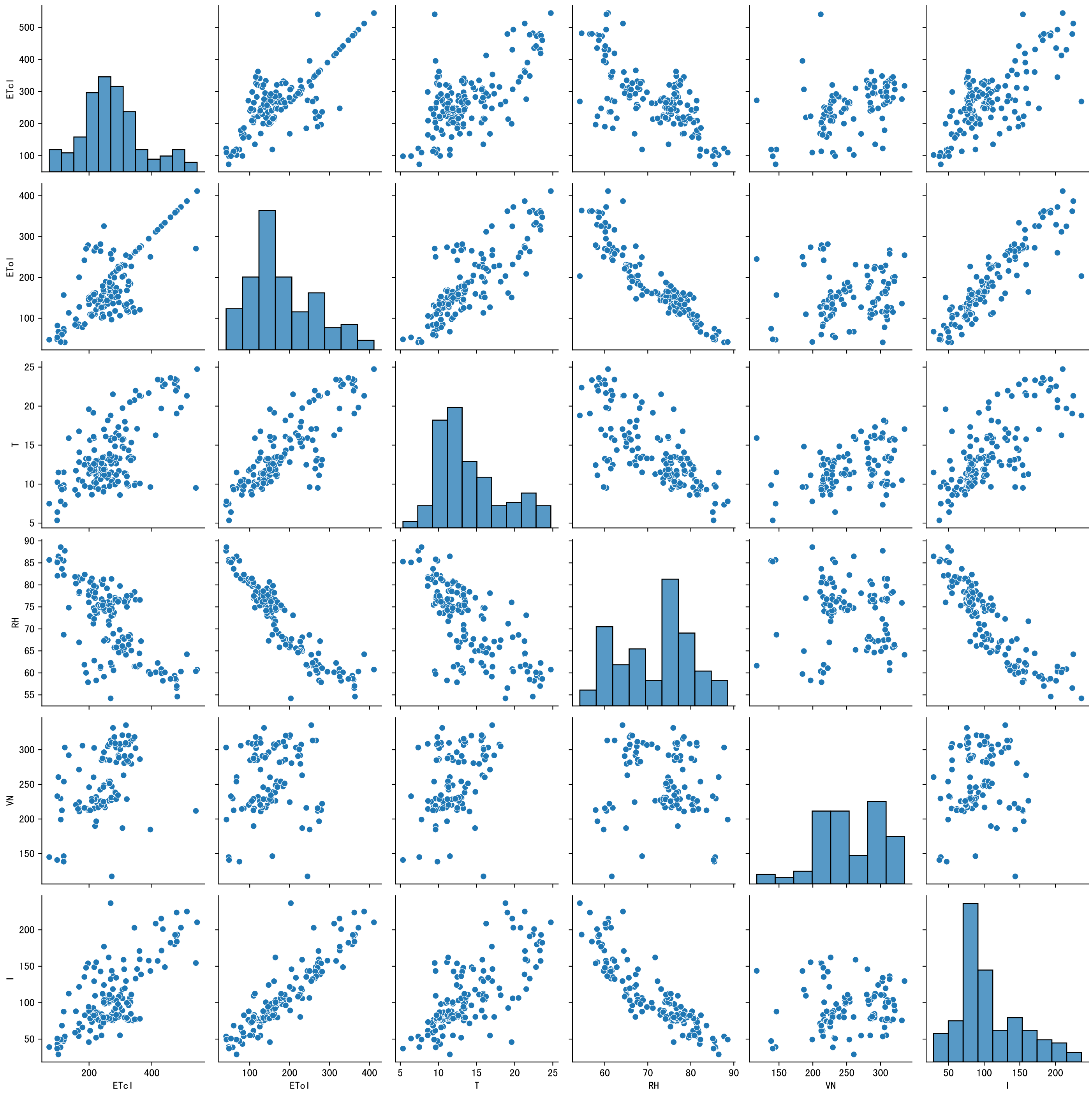
Fertilizer Range Source: kerleyL, kerleyH, UnivFL, TNAI, Haifa

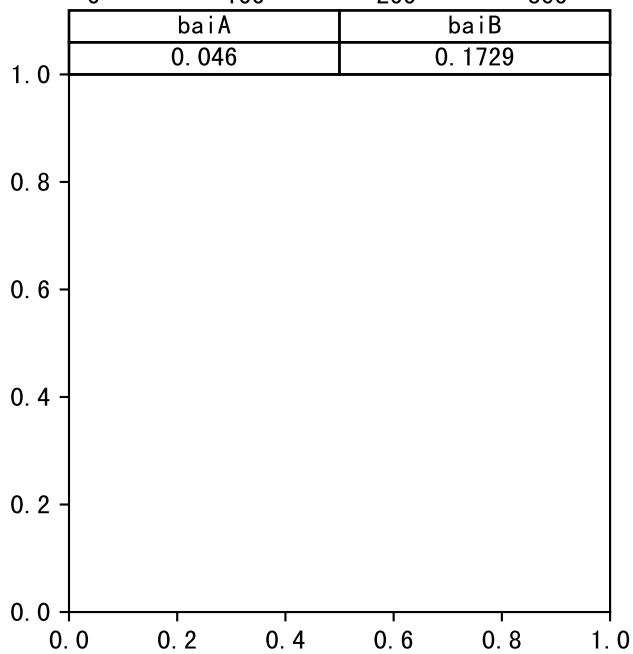
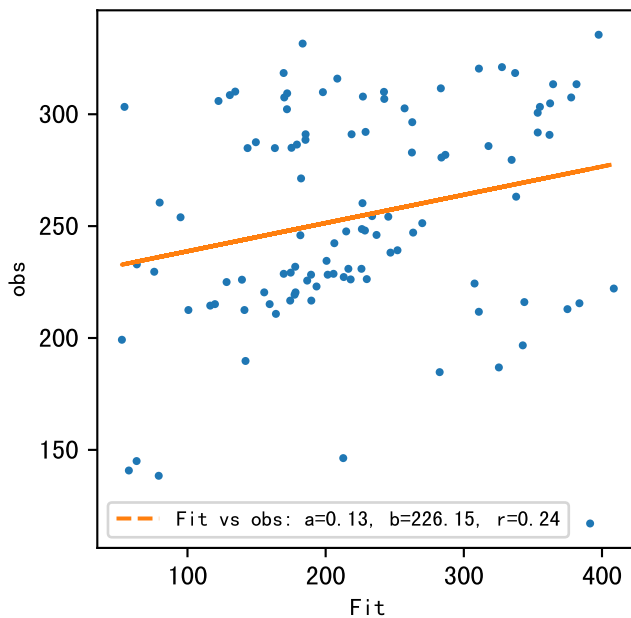
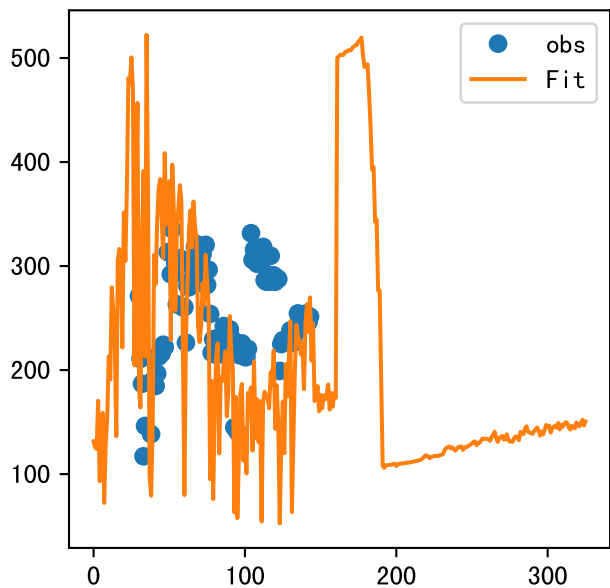


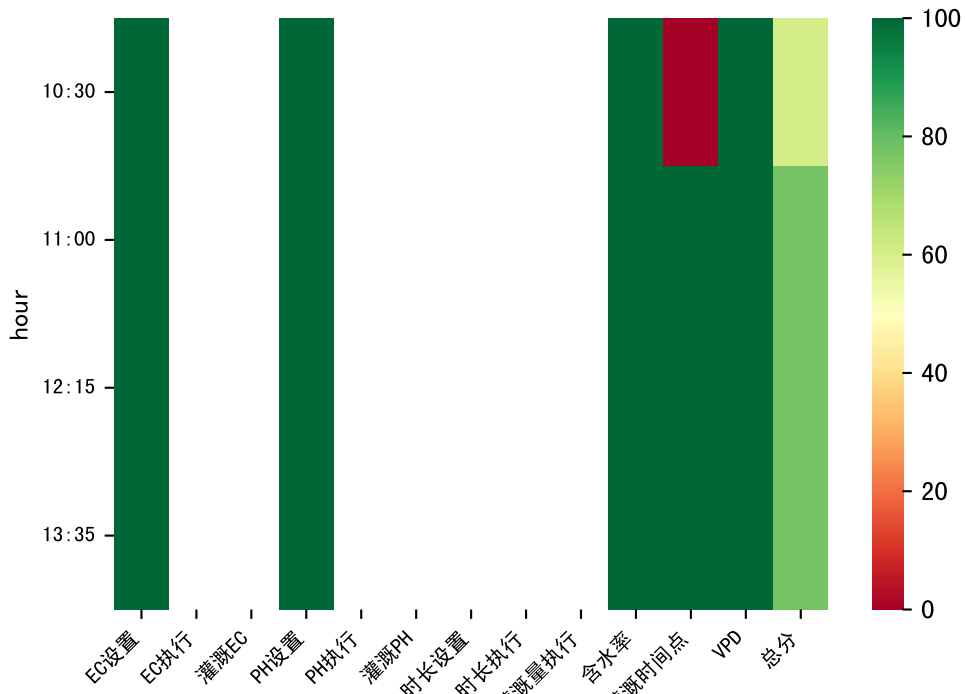
Trend plot forXX8_0



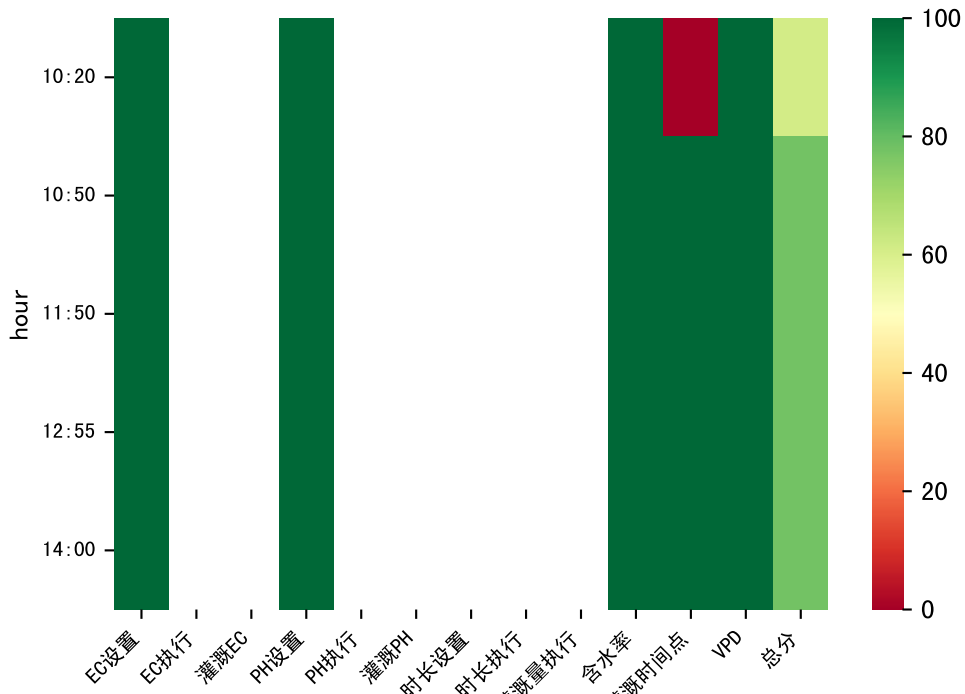






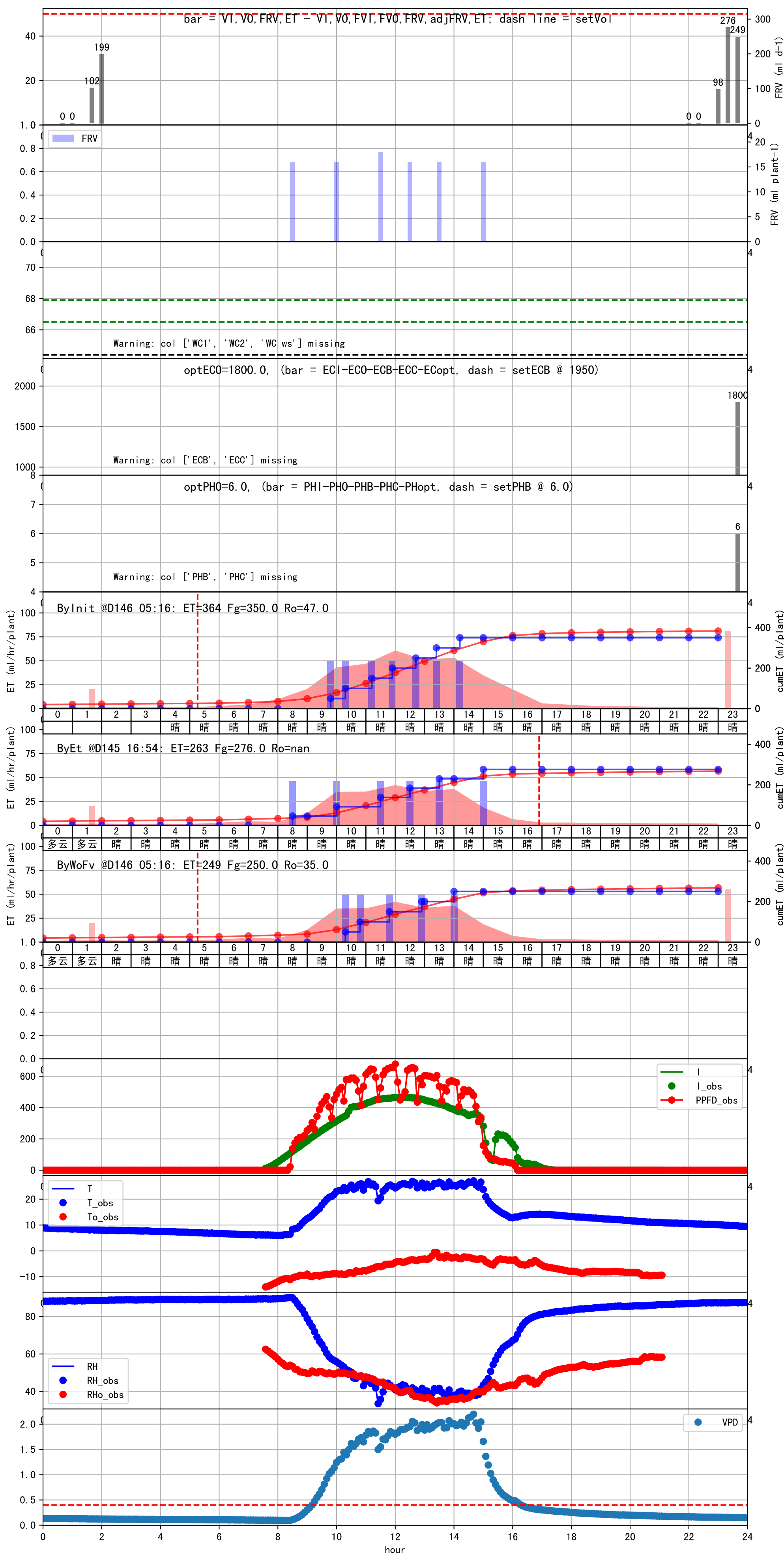


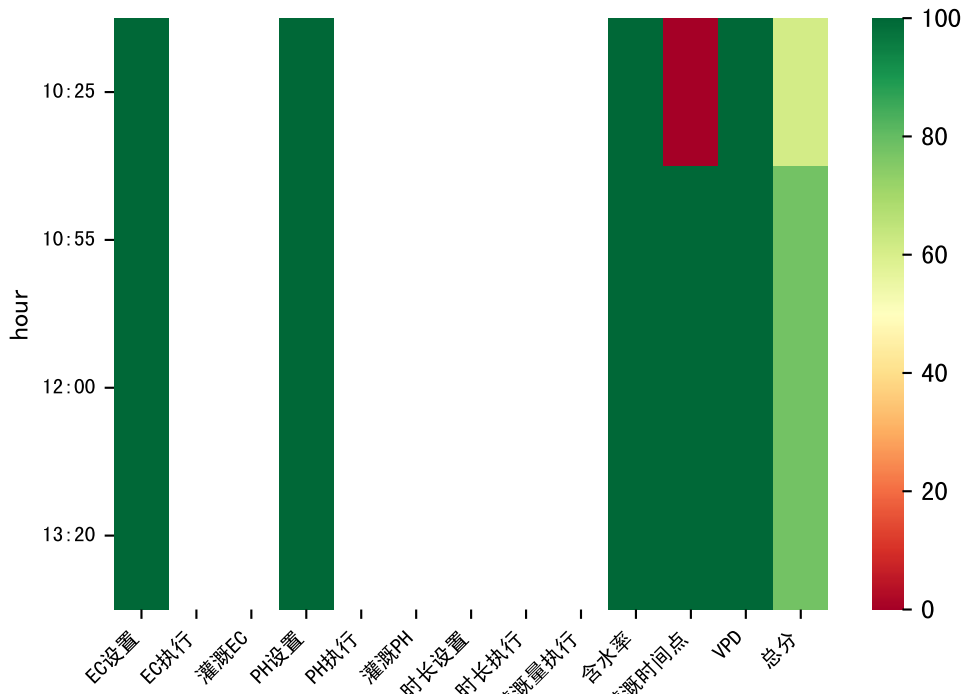
时间	灌溉时长(秒)	灌溉量(毫升/株)	灌溉总量(方/次)	天气	注释
10:30	132	50.0	0.309	晴	预期@10:30 手动 (未用传感器)
11:00	132	50.0	0.309	晴	预期@11:00 手动 (未用传感器)
12:15	132	50.0	0.309	晴	预期@12:15 手动 (未用传感器)
13:35	132	50.0	0.309	晴	预期@13:35 手动 (未用传感器)
总计	528.0 (4次)	200.0			建议进液EC: 1990, PH: 6.0



时间	灌溉时长(秒)	灌溉量(毫升/株)	灌溉总量(方/次)	天气	注释
10:20	120	50.0	0.309	晴	假设@10:20 手动 (未用传感器)
10:50	120	50.0	0.309	晴	假设@10:50 手动 (未用传感器)
11:50	120	50.0	0.309	晴	假设@11:50 手动 (未用传感器)
12:55	120	50.0	0.309	晴	假设@12:55 手动 (未用传感器)
14:00	120	50.0	0.309	晴	假设@14:00 手动 (未用传感器)
总计	600.0 (5次)	250.0			建议进液EC: 1950, PH: 6.0

滴头平均流速偏小 (0.14 vs def 0.5), 请检查
 施肥机灌溉量与预期值不符 (16.0 : 46.0), 可能水表需要校准
 默认实际灌溉46.0 ml.





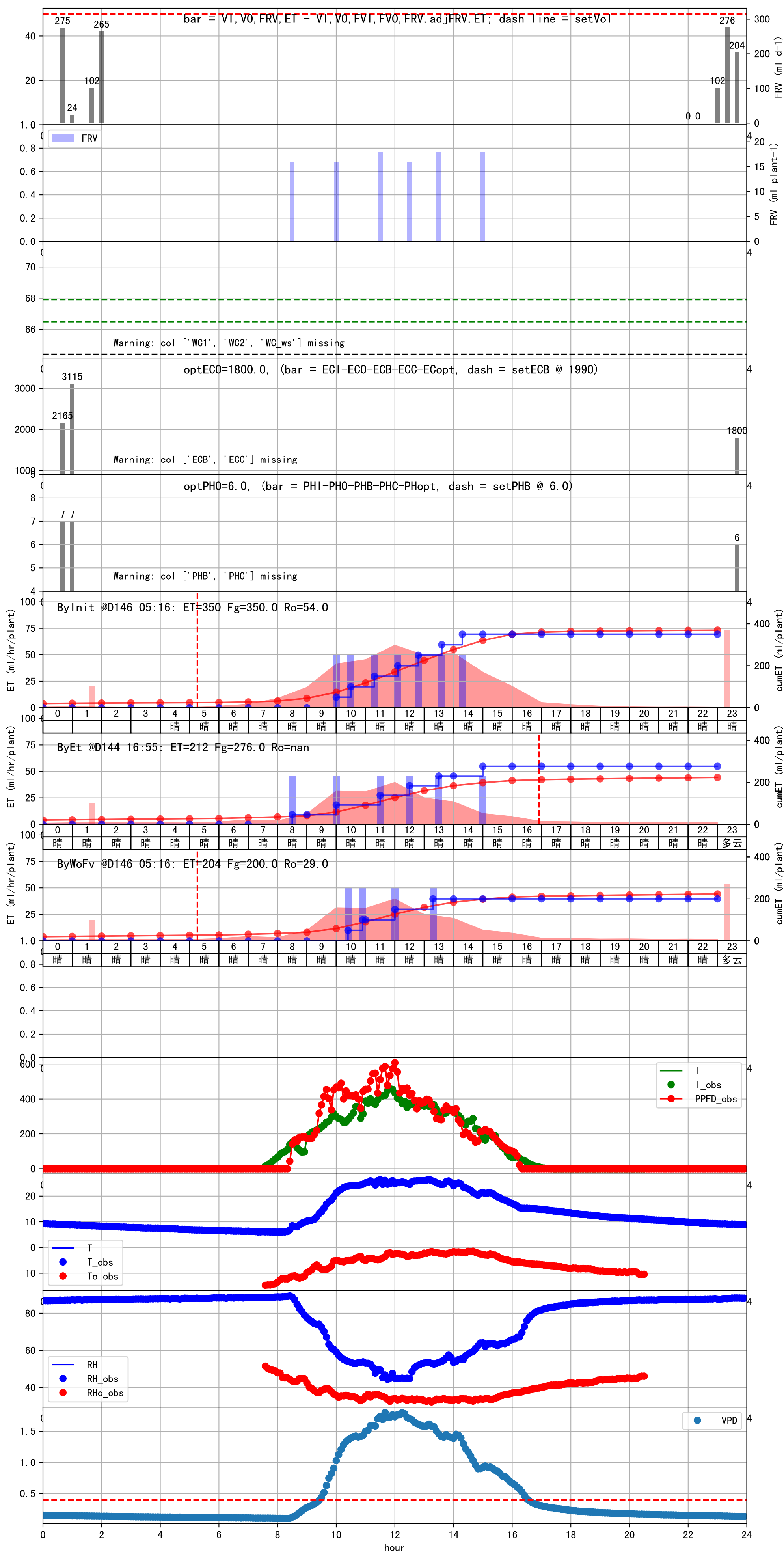
时间	灌溉时长(秒)	灌溉量(毫升/株)	灌溉总量(方/次)	天气	注释
10:25	120	50.0	0.309	晴	假设@10:25 手动 (未用传感器)
10:55	120	50.0	0.309	晴	假设@10:55 手动 (未用传感器)
12:00	120	50.0	0.309	晴	假设@12:00 手动 (未用传感器)
13:20	120	50.0	0.309	晴	假设@13:20 手动 (未用传感器)
总计	480.0 (4次)	200.0			建议进液EC: 1990, PH: 6.0

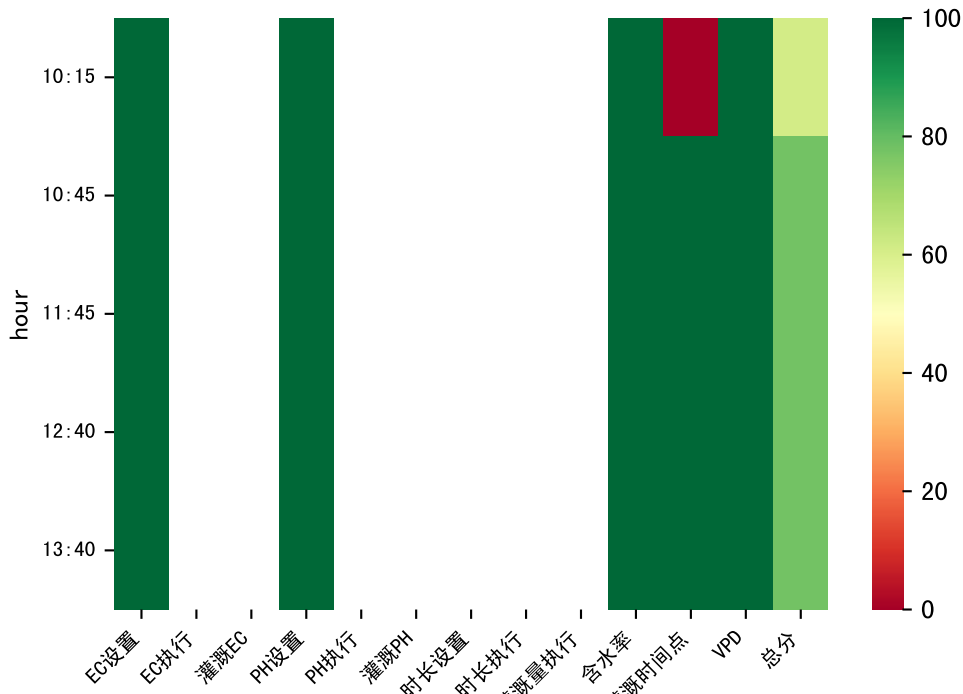
滴头平均流速偏小 (0.13 vs def 0.5), 请检查

上次灌溉流速比过去5天平均大 (0.15 vs 0.13), 可能管道压力异常或有管道漏水

施肥机灌溉量与预期值不符 (18.0 : 46.0), 可能水表需要校准

默认实际灌溉46.0 ml.





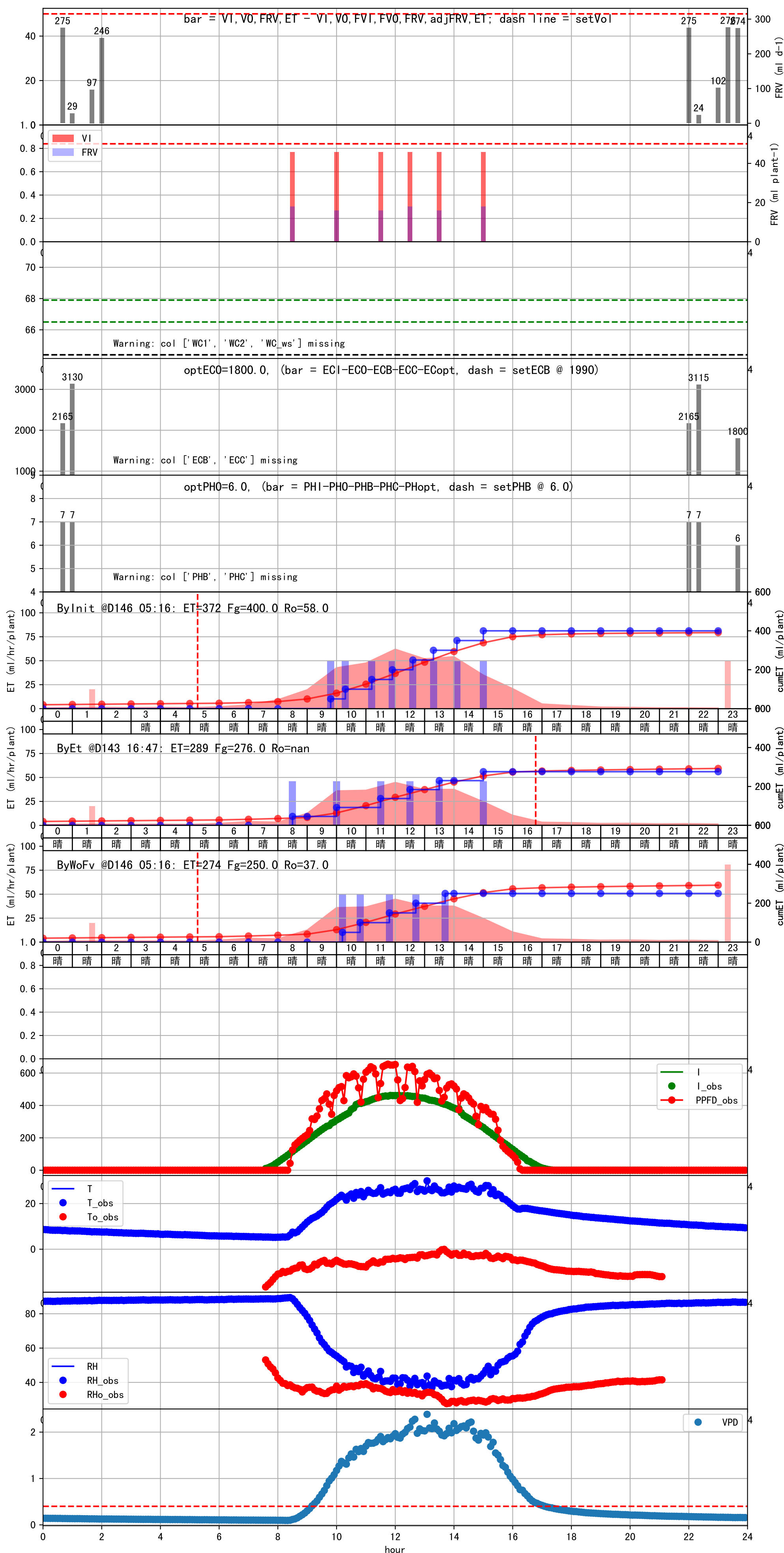
时间	灌溉时长(秒)	灌溉量(毫升/株)	灌溉总量(方/次)	天气	注释
10:15	120	50.0	0.309	晴	假设@10:15 手动 (未用传感器)
10:45	120	50.0	0.309	晴	假设@10:45 手动 (未用传感器)
11:45	120	50.0	0.309	晴	假设@11:45 手动 (未用传感器)
12:40	120	50.0	0.309	晴	假设@12:40 手动 (未用传感器)
13:40	120	50.0	0.309	晴	假设@13:40 手动 (未用传感器)
总计	600.0 (5次)	250.0			建议进液EC: 1990, PH: 6.0

滴头平均流速偏小 (0.13 vs def 0.5), 请检查

上次灌溉流速比过去5天平均大 (0.15 vs 0.13), 可能管道压力异常或有管道漏水

施肥机灌溉量与预期值不符 (18.0 : 46.0), 可能水表需要校准

默认实际灌溉46.0 ml.



时间	灌溉时长(秒)	灌溉量(毫升/株)	灌溉总量(方/次)	天气	注释
10:25	120	50.0	0.309	晴	假设@10:25 手动 (未用传感器)
11:00	120	50.0	0.309	晴	假设@11:00 手动 (未用传感器)
12:20	120	50.0	0.309	晴	假设@12:20 手动 (未用传感器)
13:25	120	50.0	0.309	晴	假设@13:25 手动 (未用传感器)
总计	480.0 (4次)	200.0			建议进液EC: 1850, PH: 6.0

滴头平均流速偏小 (0.13 vs def 0.5), 请检查
 施肥机灌溉量与预期值不符 (16.0 : 46.0), 可能水表需要校准
 默认实际灌溉46.0 ml.

