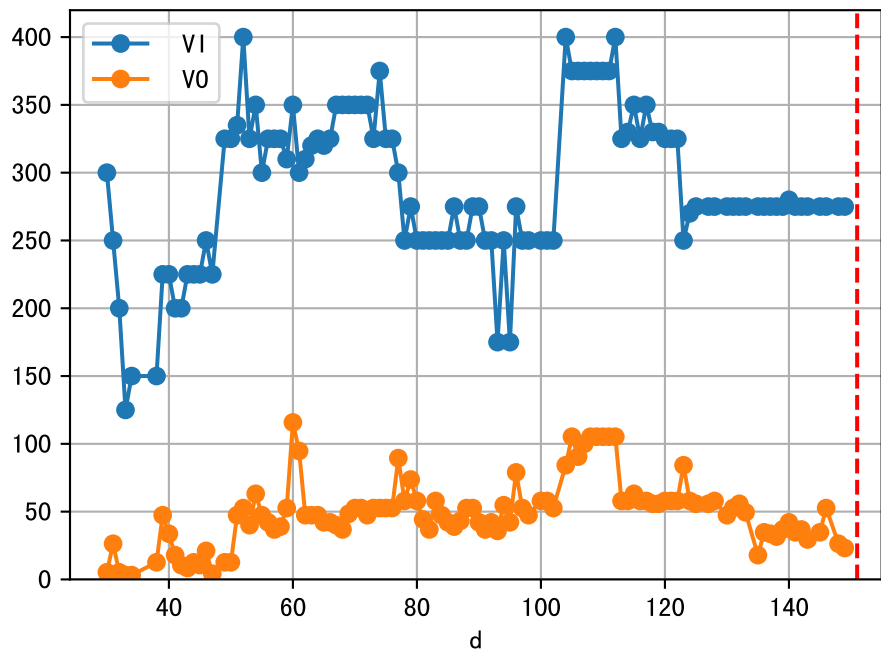
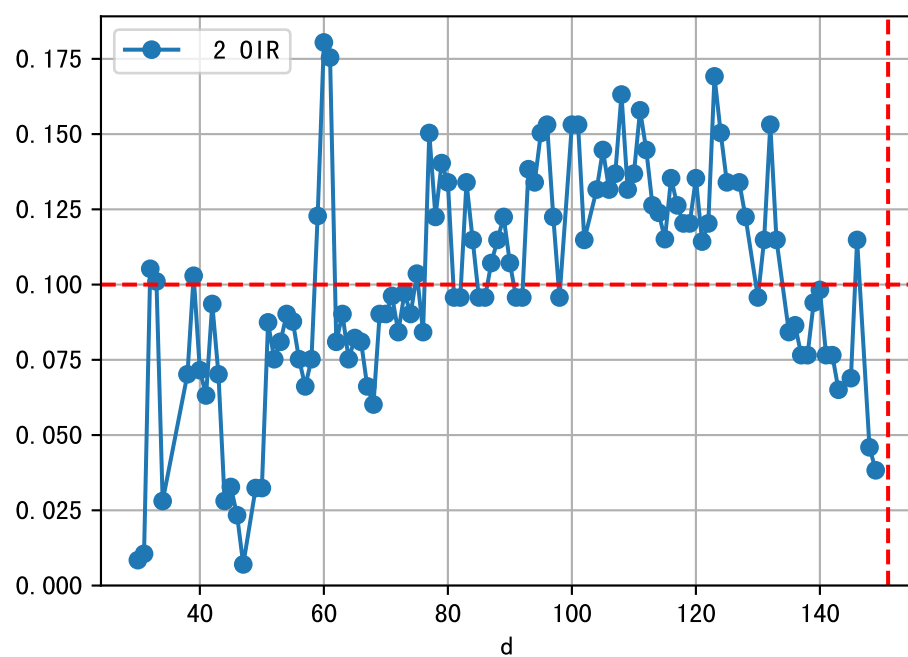
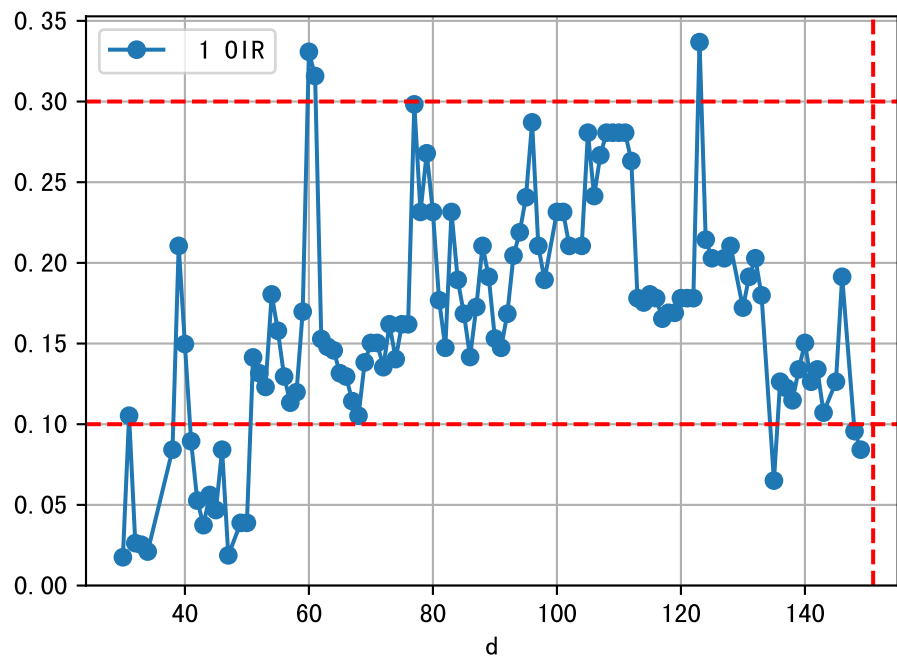
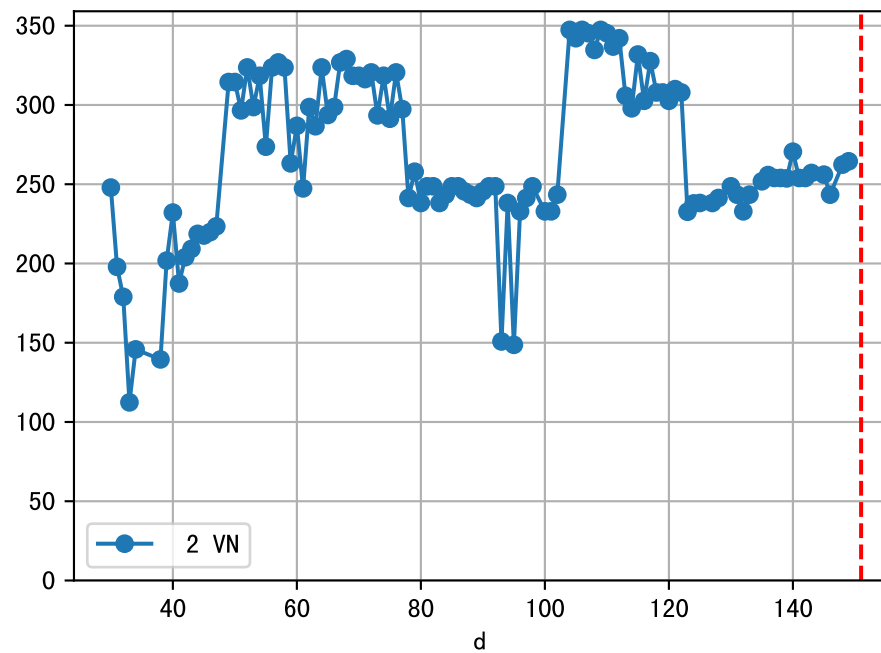
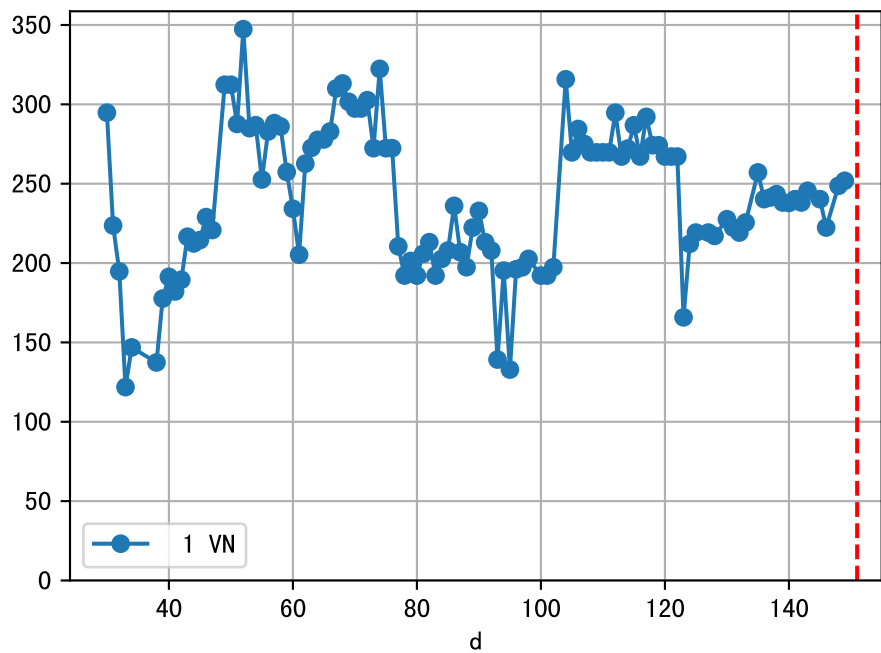
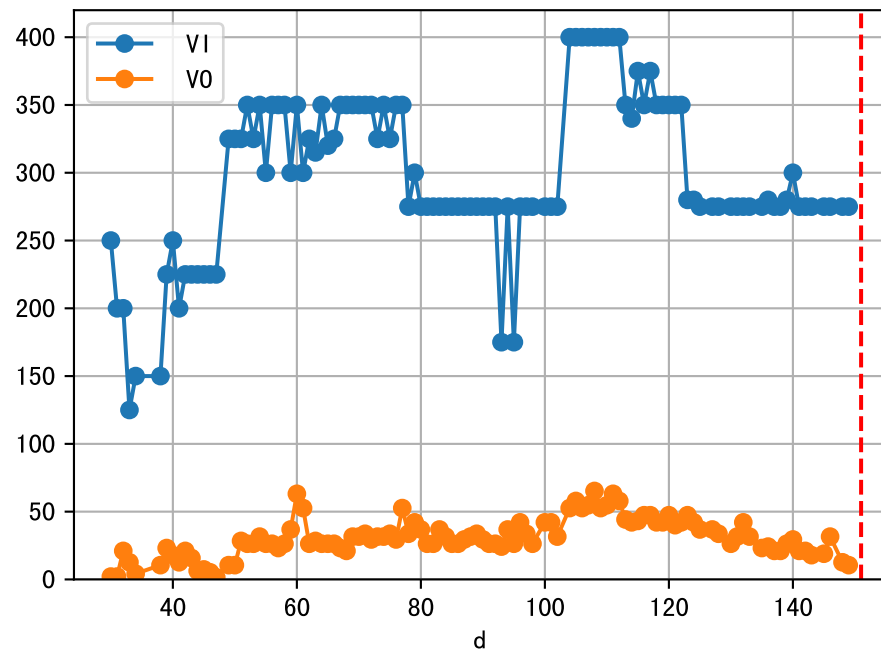


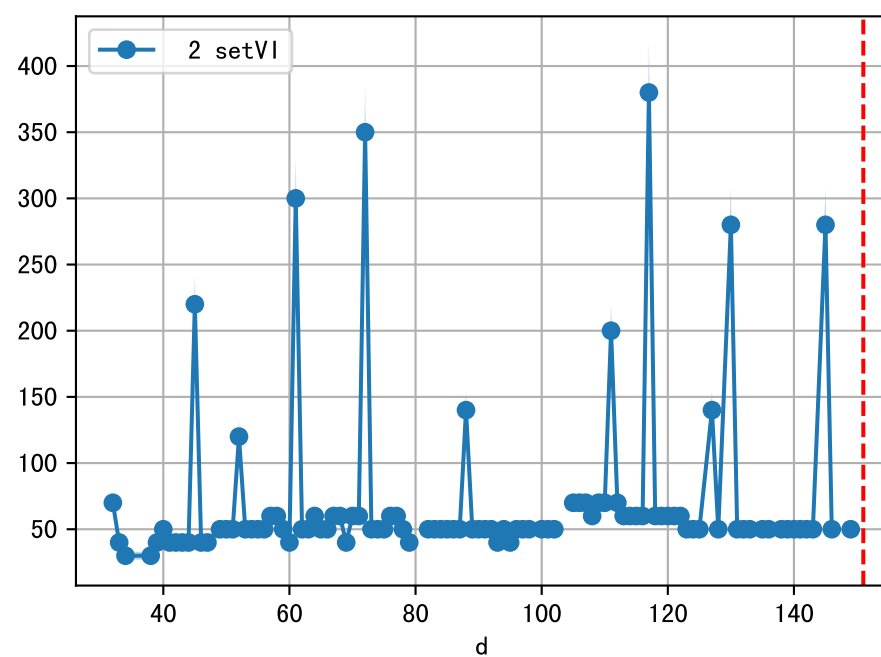
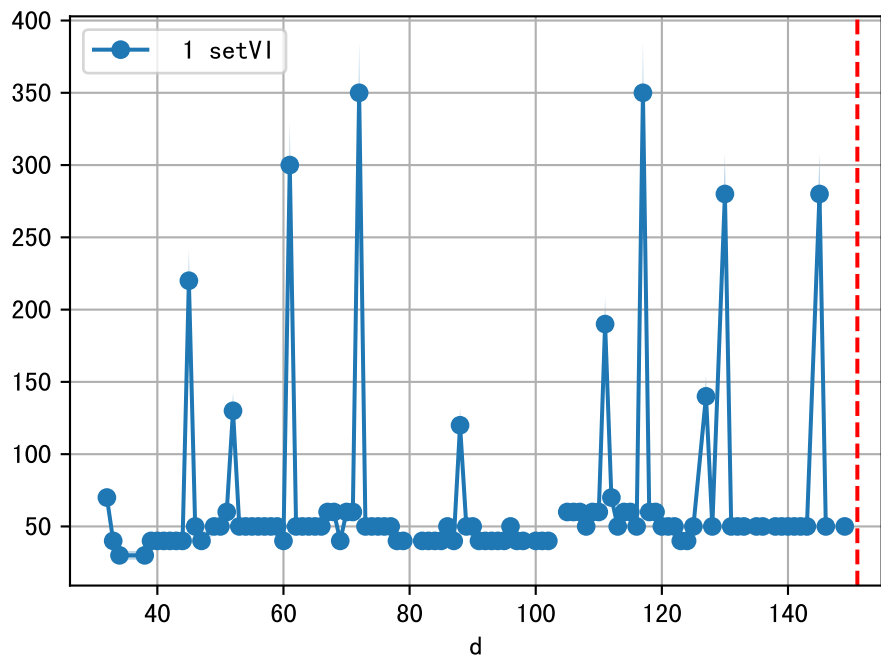
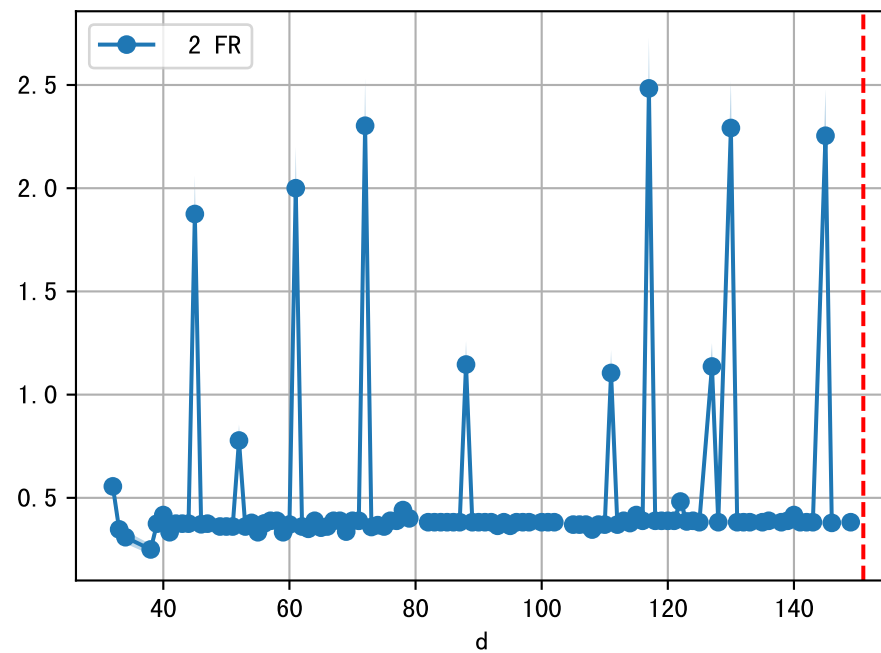
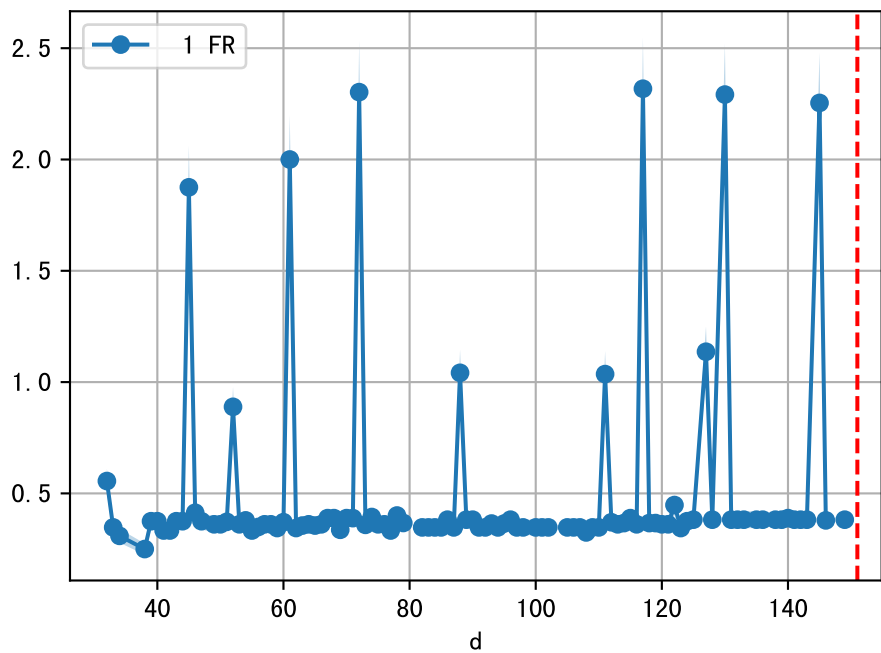
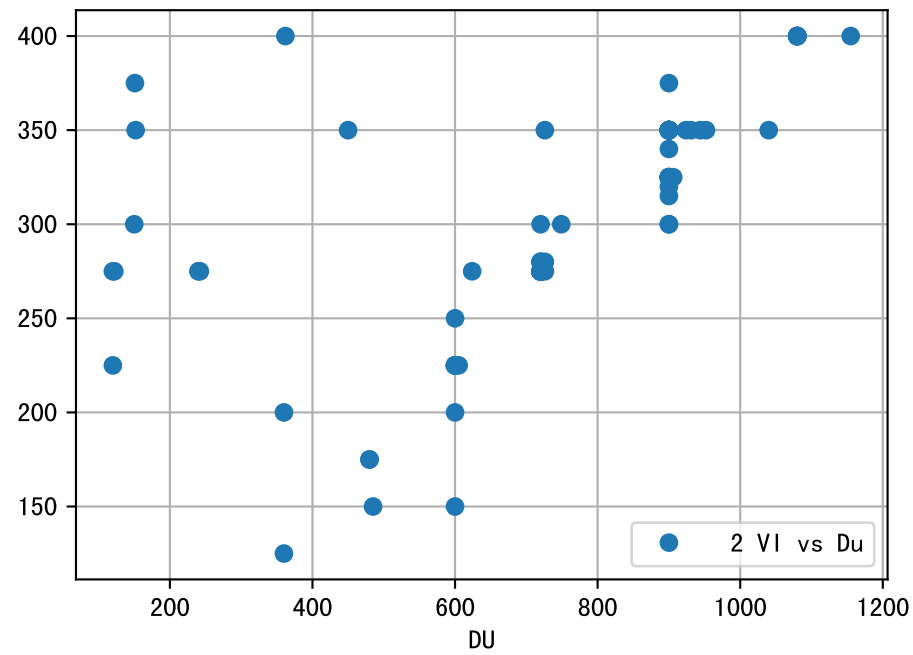
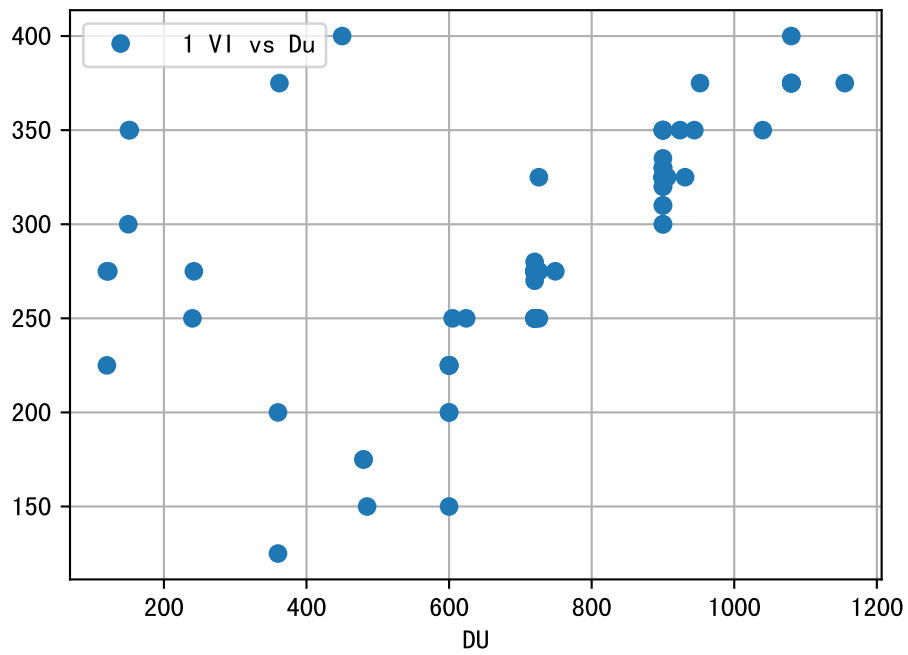
FgArea: [' 0' ]  
SS40 XX8  
2026-02-06 (Day 151)

fgNum 1 (at\_row = 3)

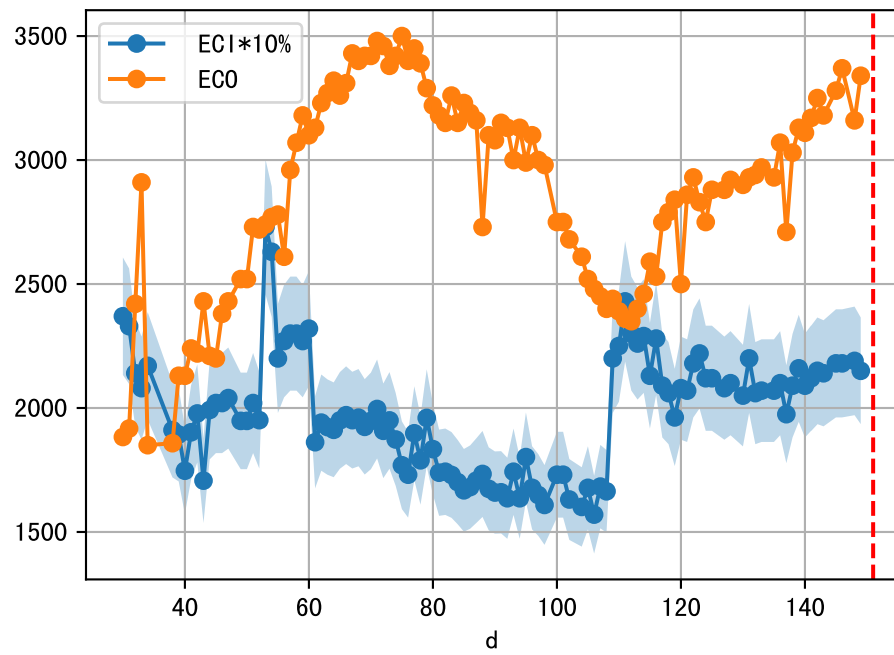


fgNum 2 (at\_row = 35)

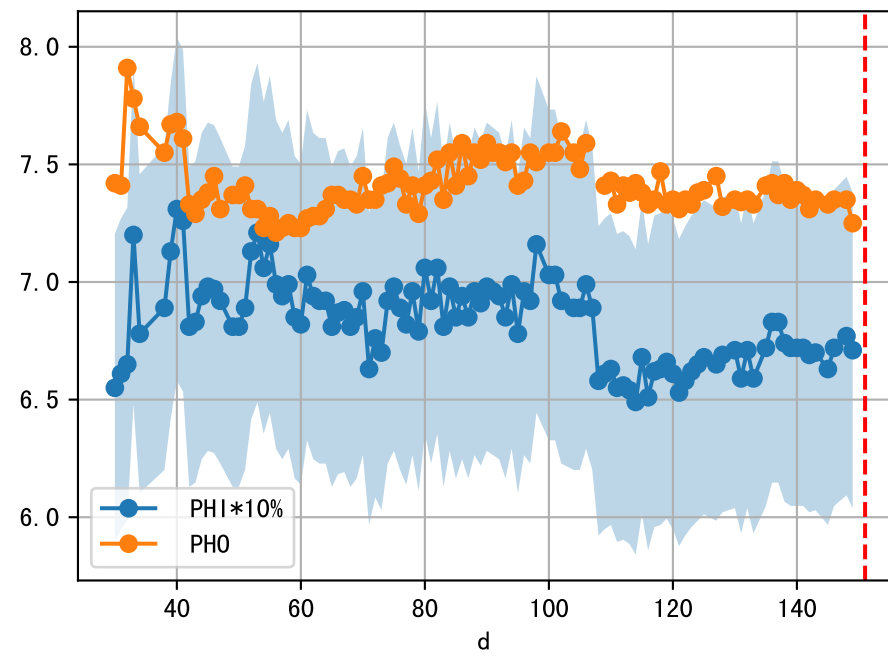
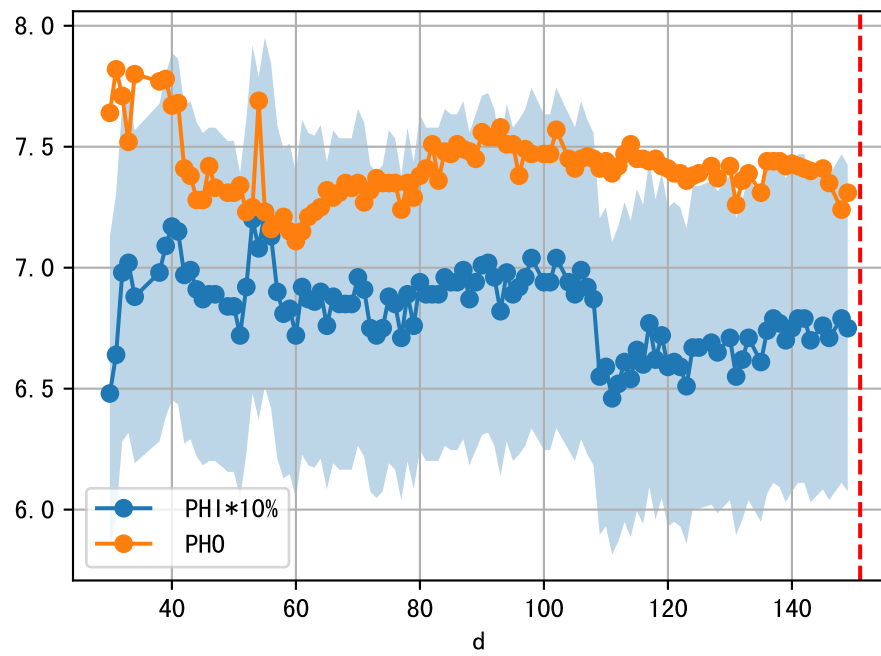
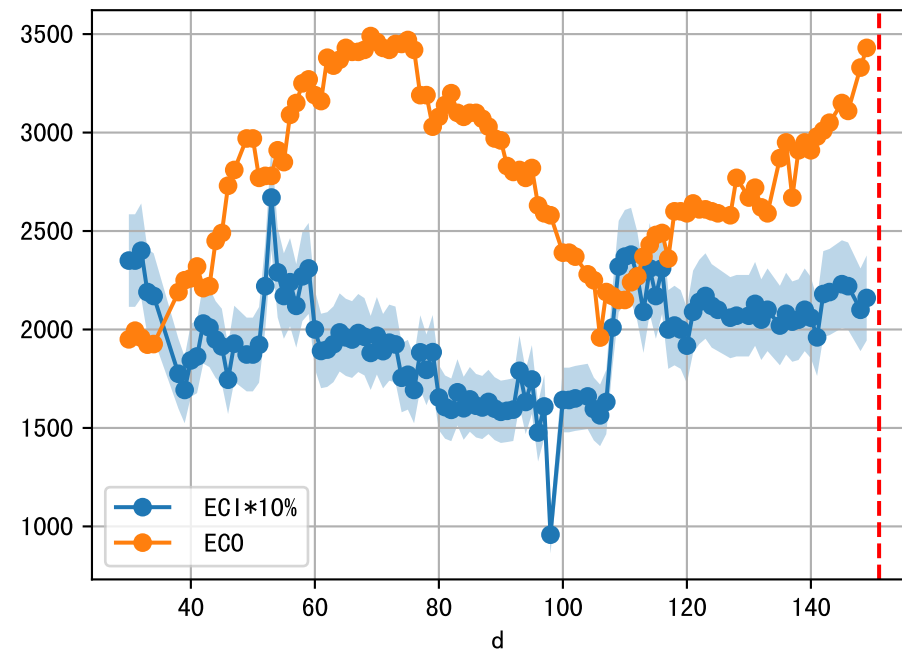




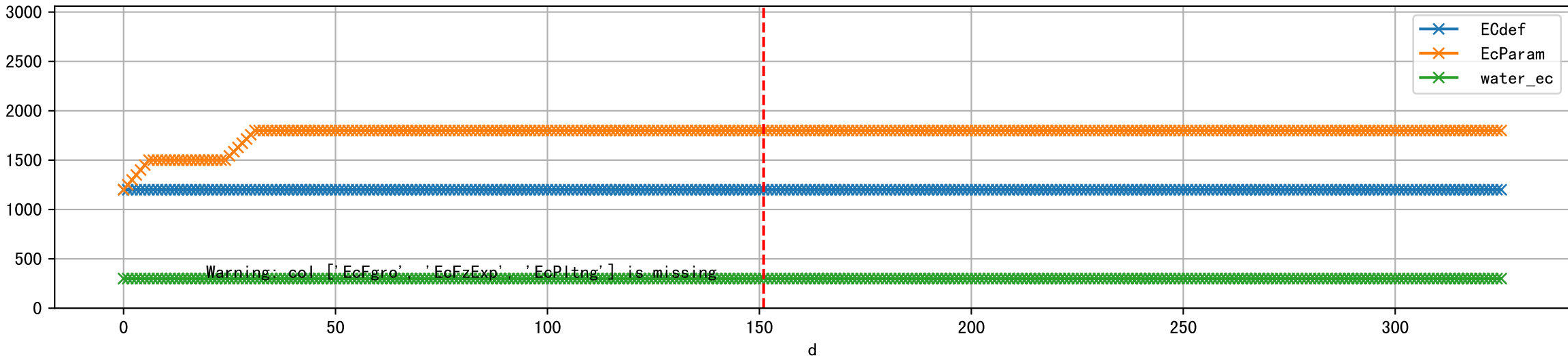
1 (fgArea = NA)



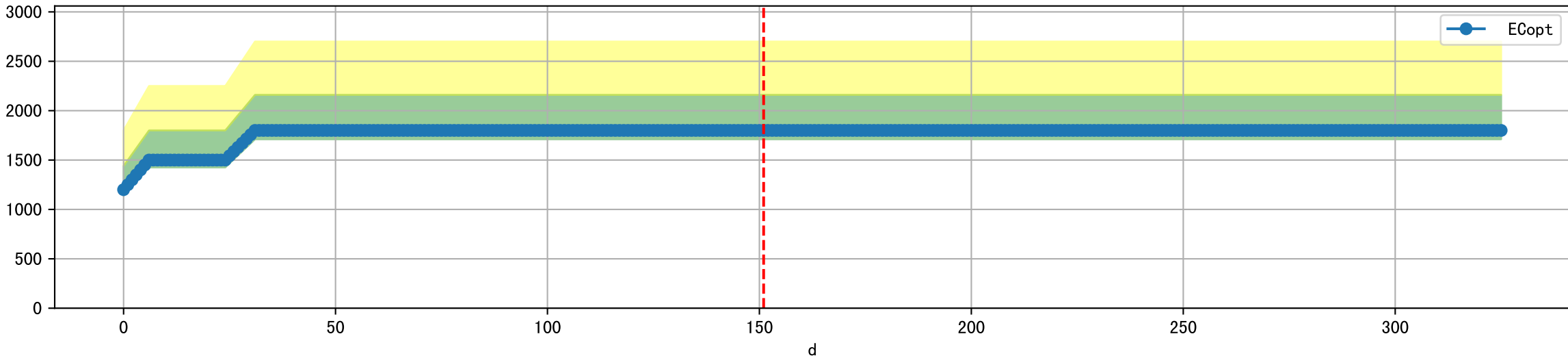
2 (fgArea = NA)



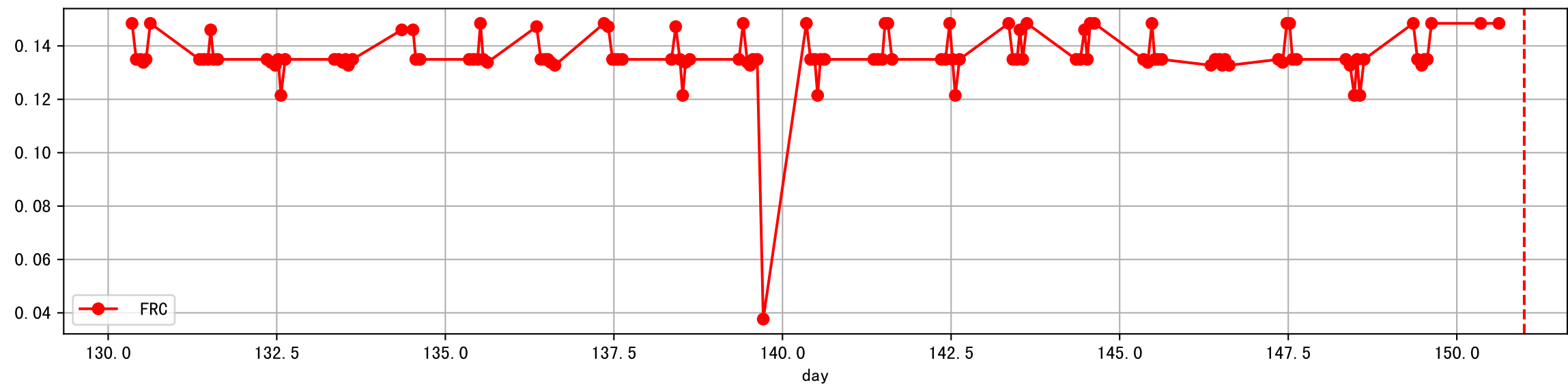
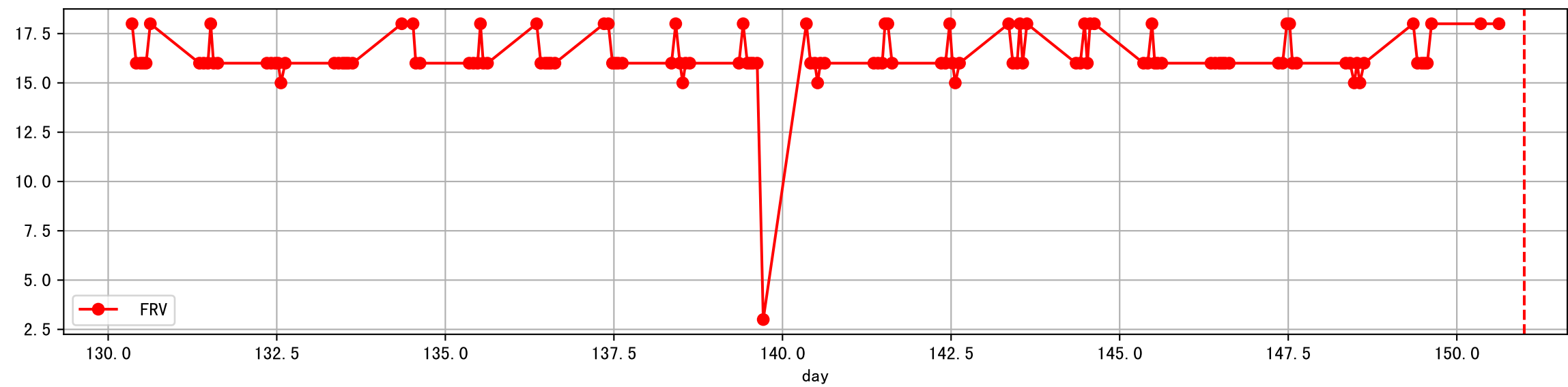
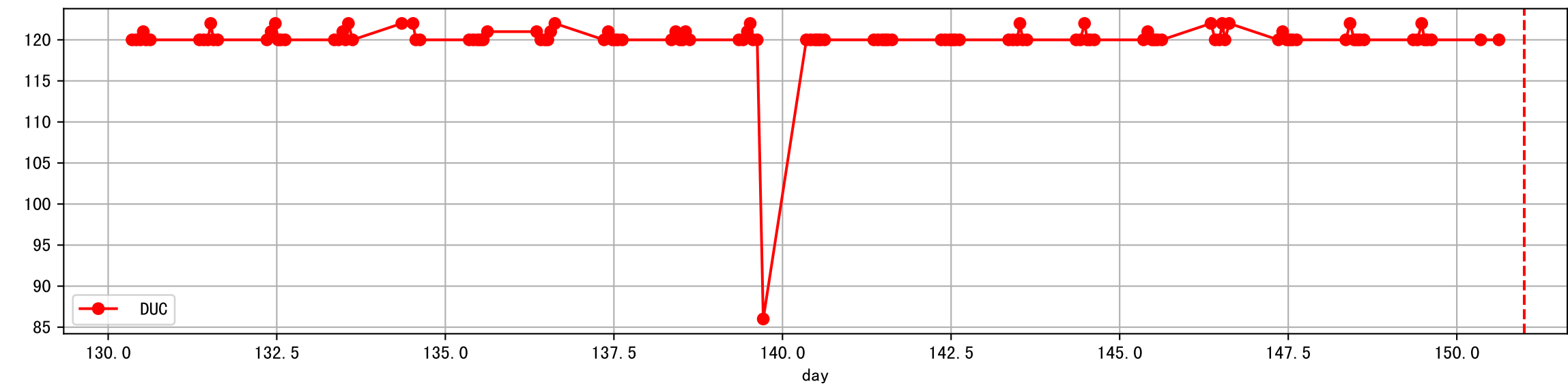
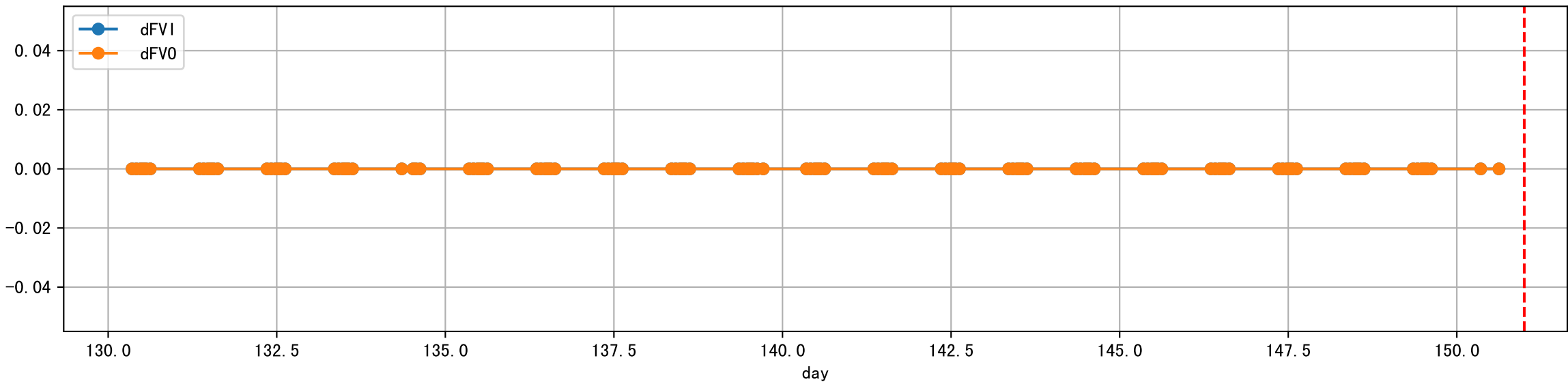
Plot [['EcFgro', 'EcFzExp', 'EcPltng', 'ECdef', 'EcParam', 'water\_ec']]



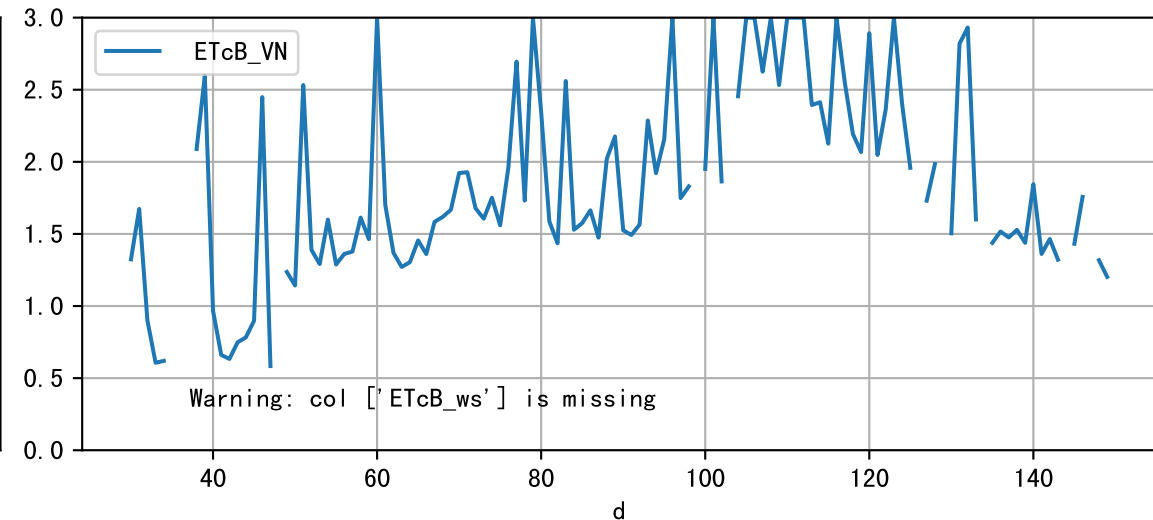
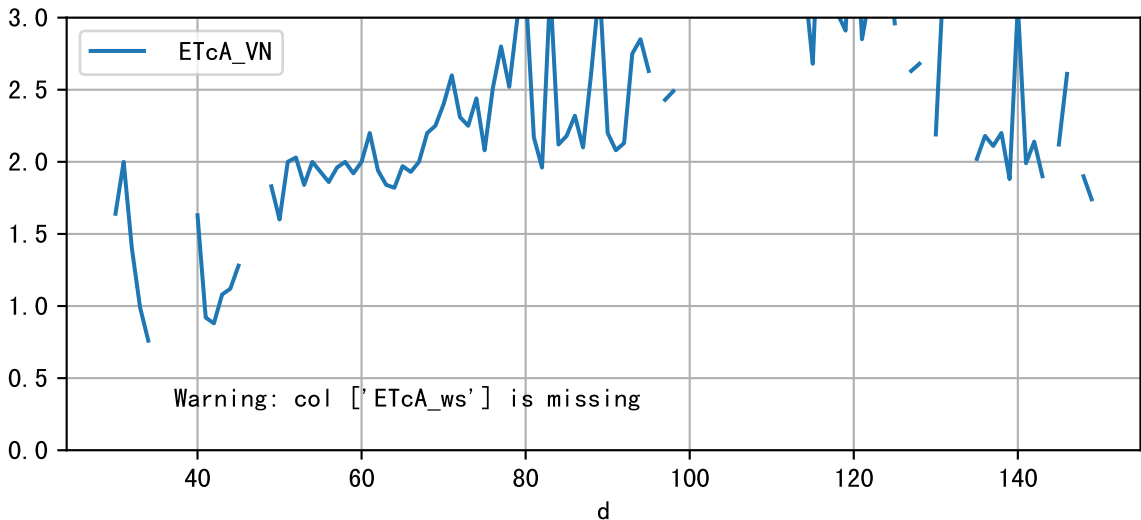
Plot [ ' ECopt' ]



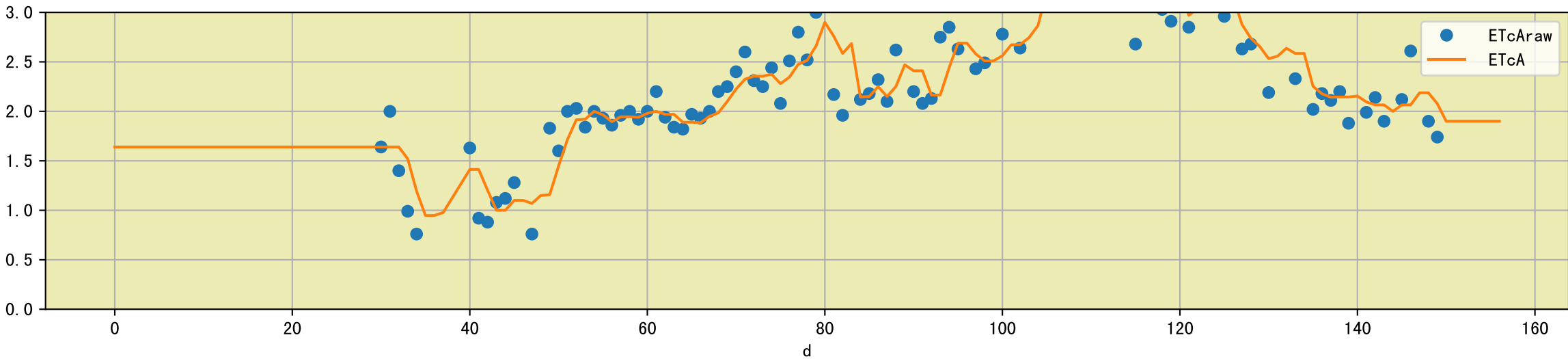
Plot Sensor and FgRec Data



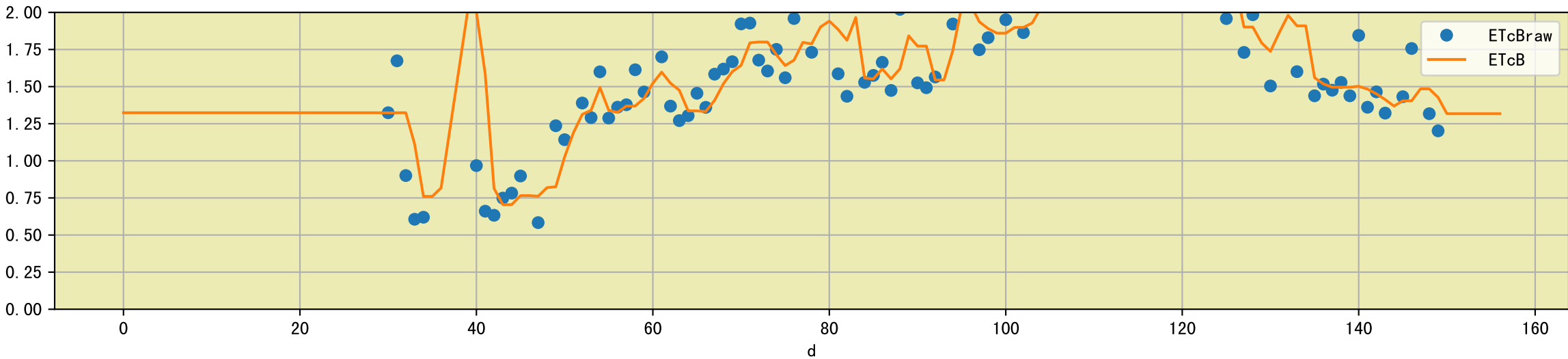
Plot [['ETcA\_VN', 'ETcA\_ws'], ['ETcB\_VN', 'ETcB\_ws']]

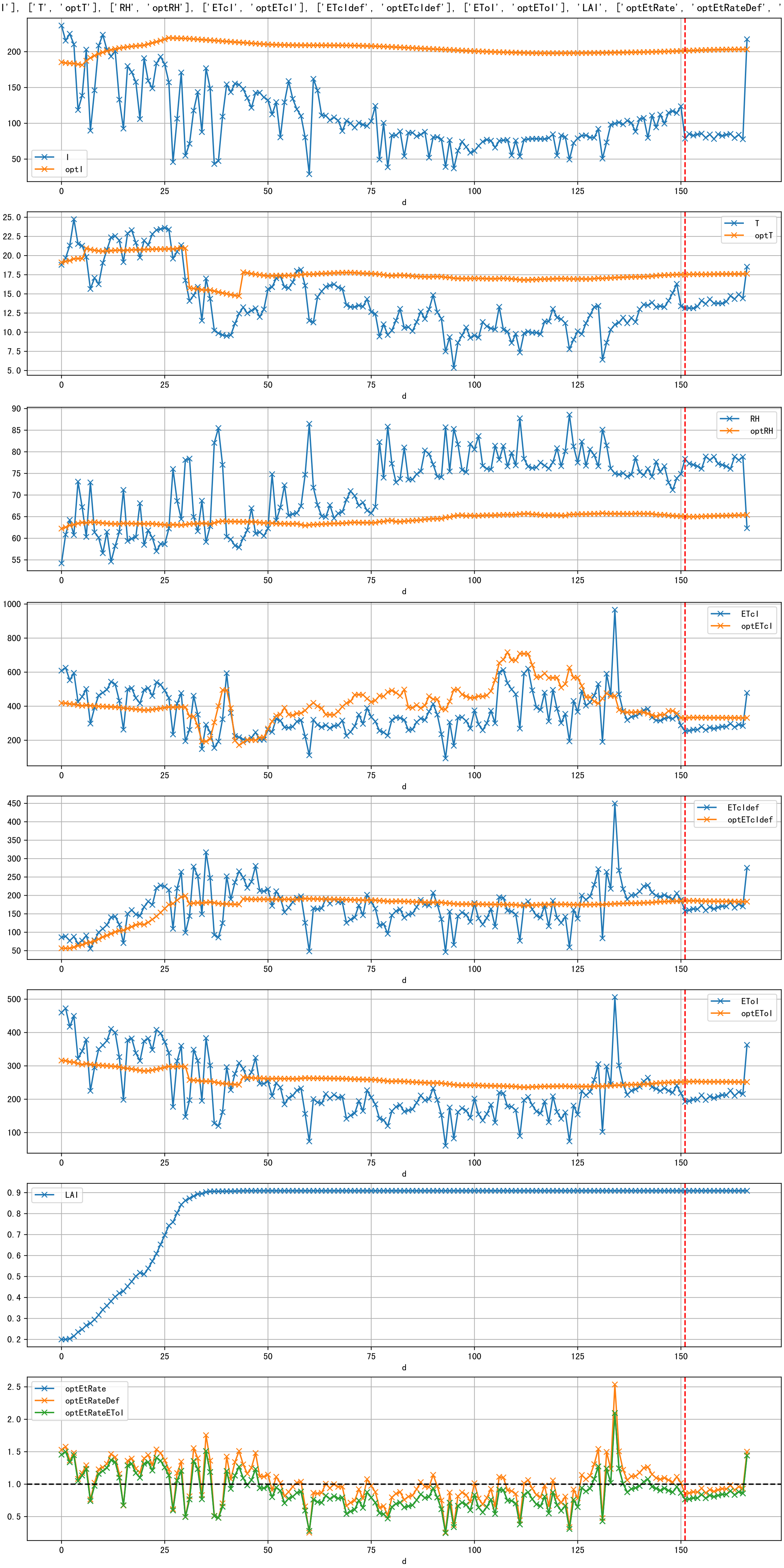


Plot [['ETcAraw:o', 'ETcA']]

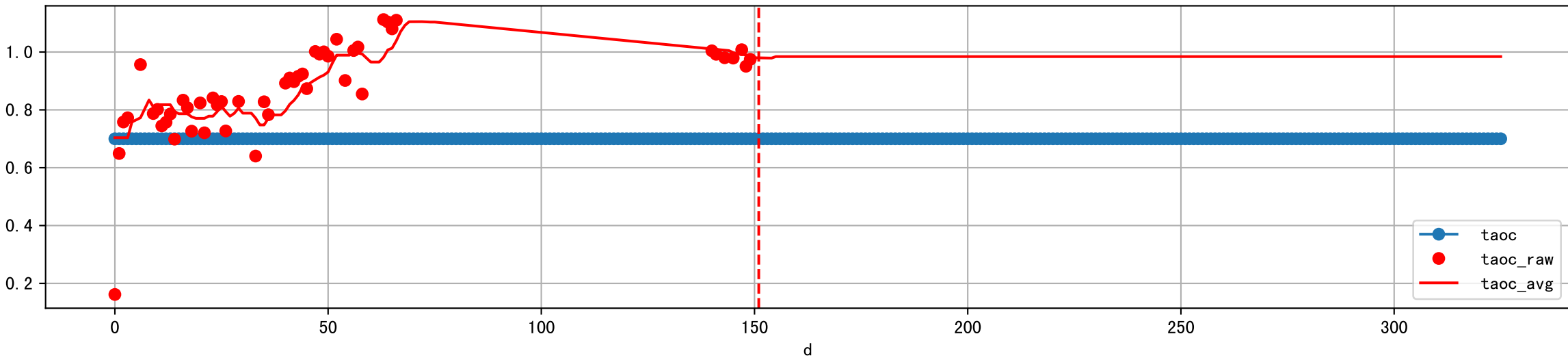


Plot [['ETcBraw:o', 'ETcB']]

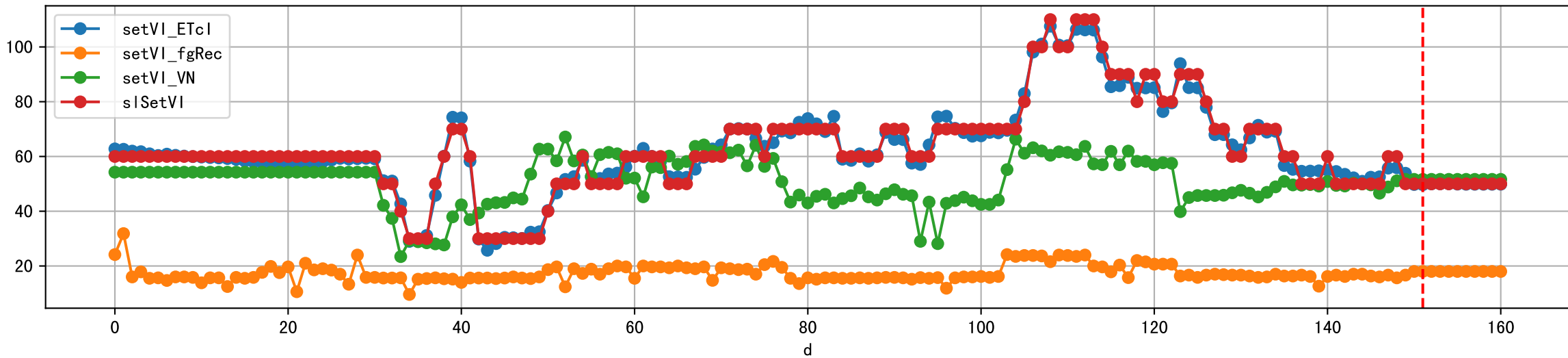




Plot [['taoc', 'taoc\_raw:ro', 'taoc\_avg:r-']]

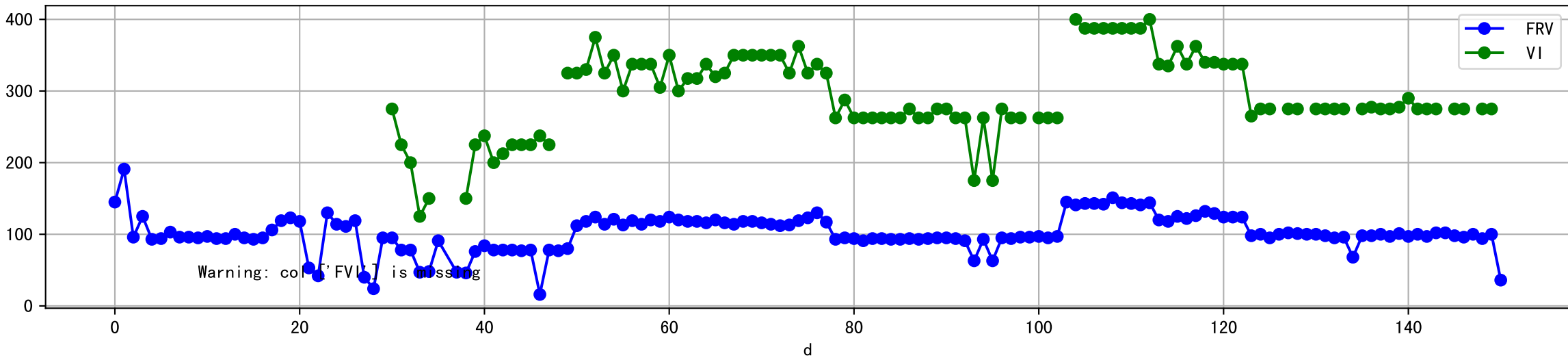


Plot [['setVI\_ETcI', 'setVI\_fgRec', 'setVI\_VN', 'sISetVI']]

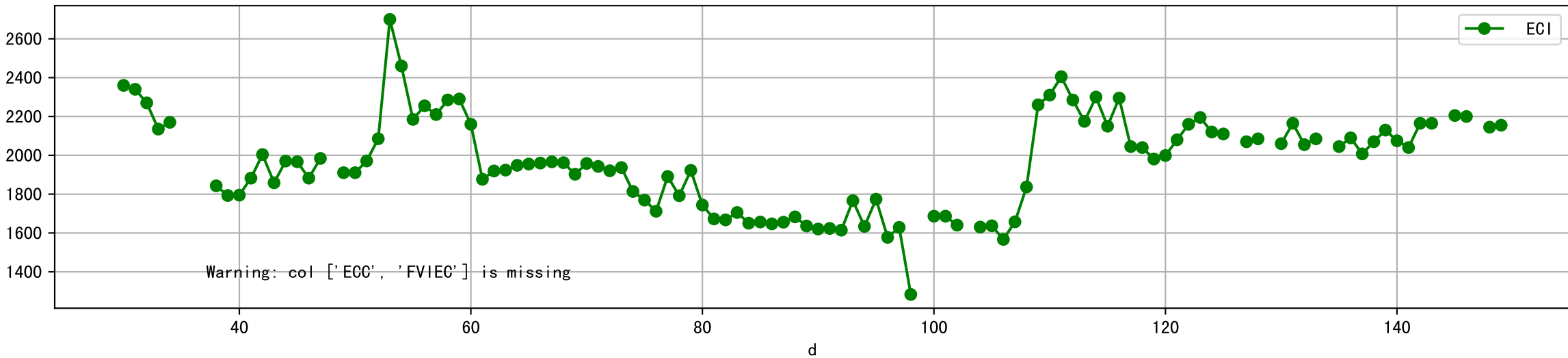




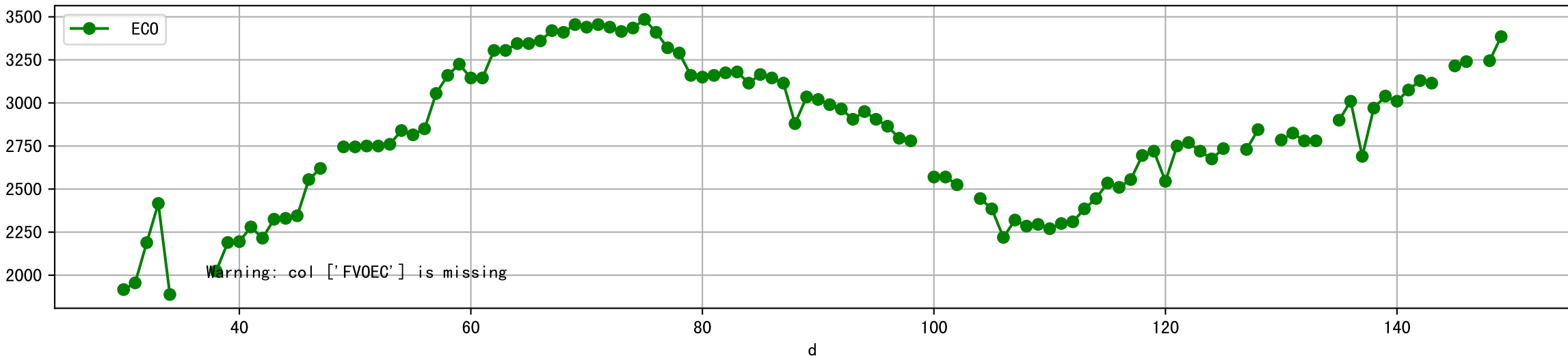
Plot [['FRV:b-o', 'FVI:r-o', 'VI:g-o']]



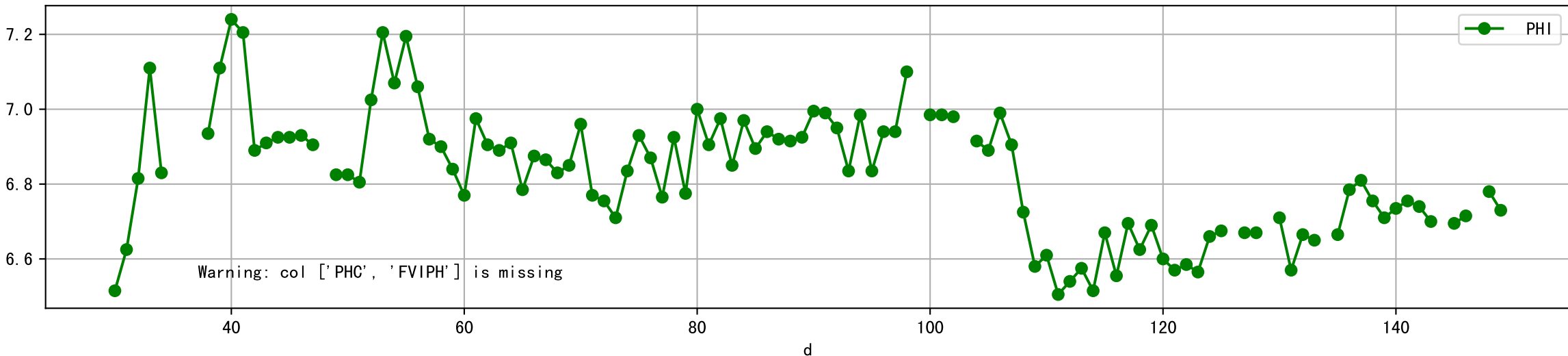
Plot [['ECC:b-o', 'FVIEC:r-o', 'ECI:g-o']]



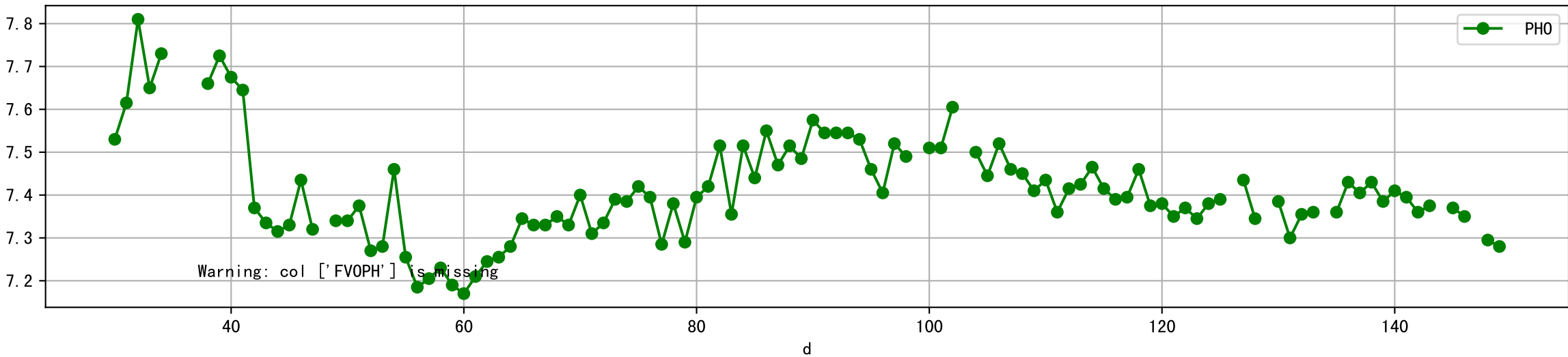
Plot [[' FVOEC:r-o', ' ECO:g-o' ]]



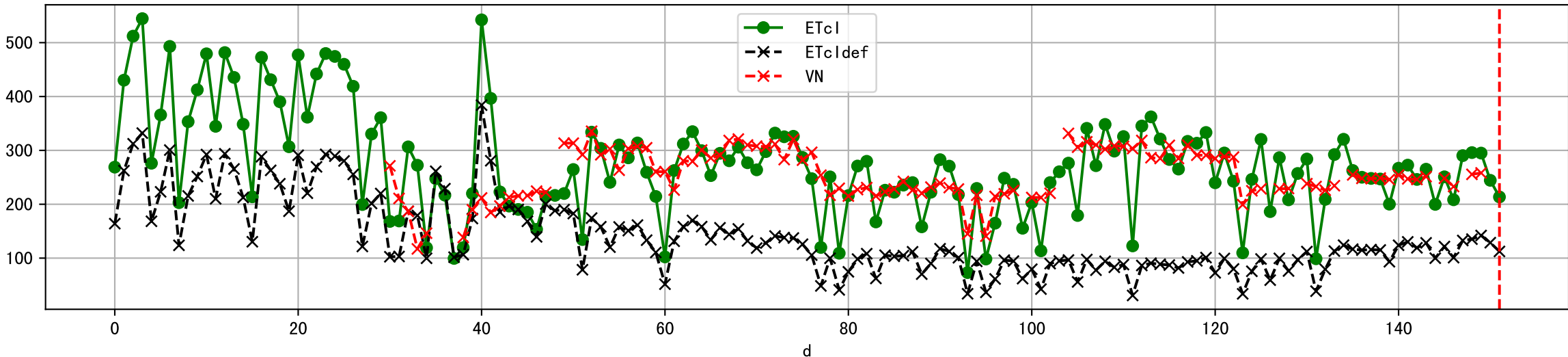
Plot [['PHC:b-o', 'FVIPH:r-o', 'PHI:g-o']]



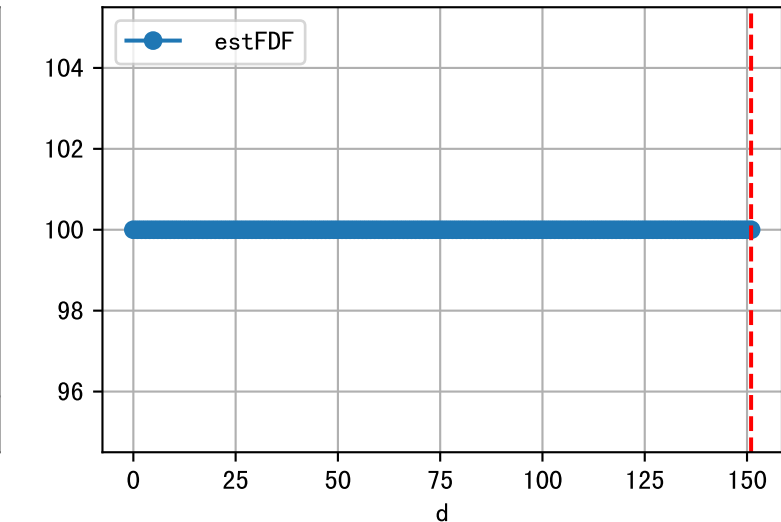
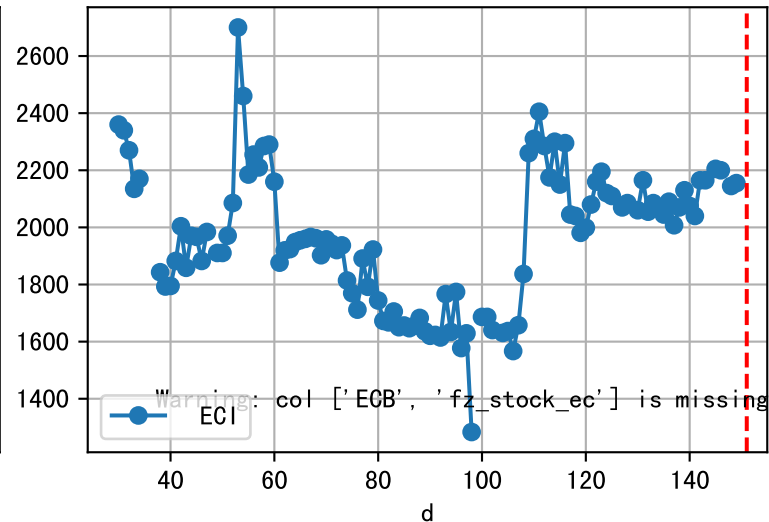
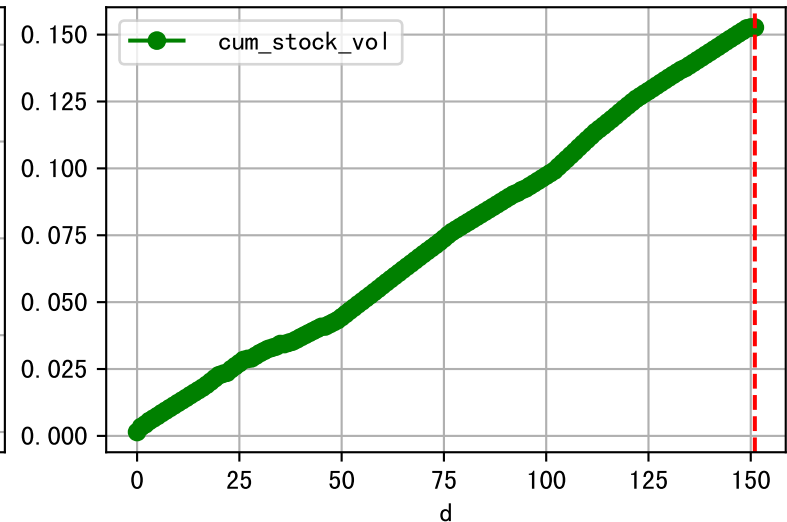
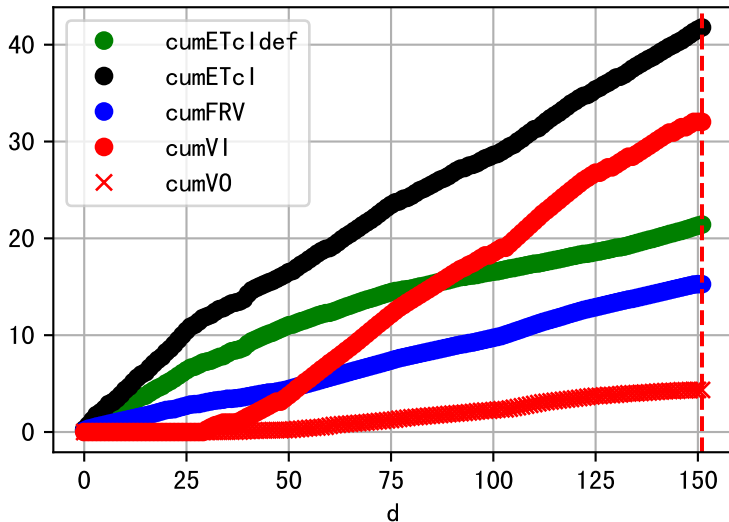
Plot [[' FVOPH:r-o' , ' PH0:g-o' ]]



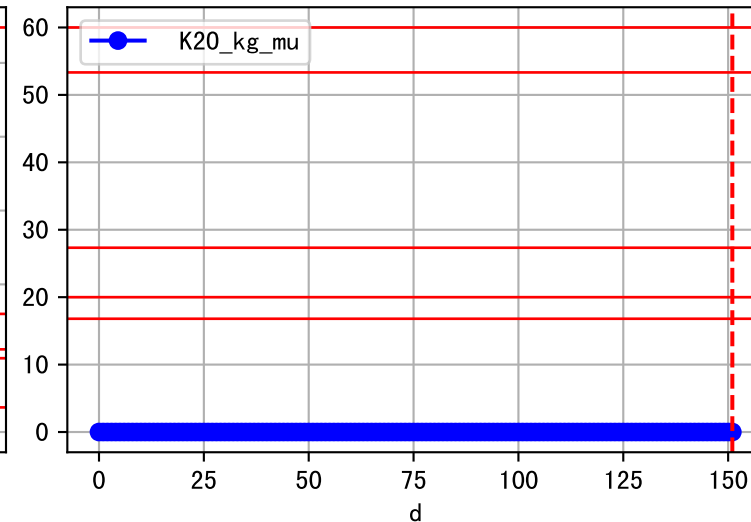
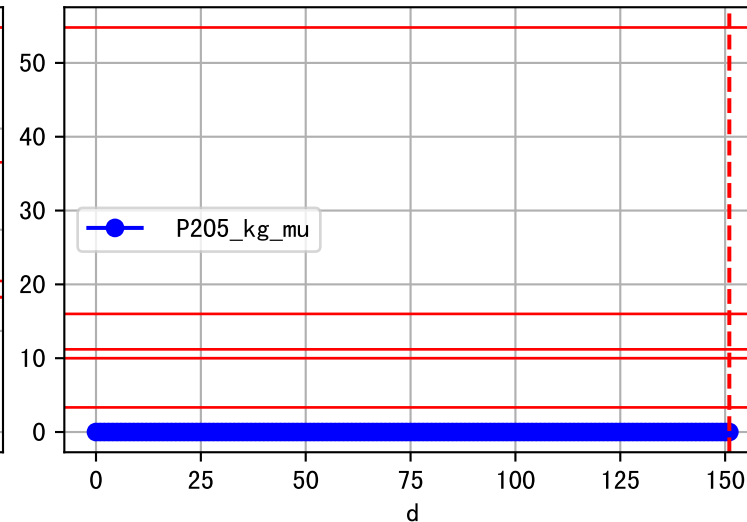
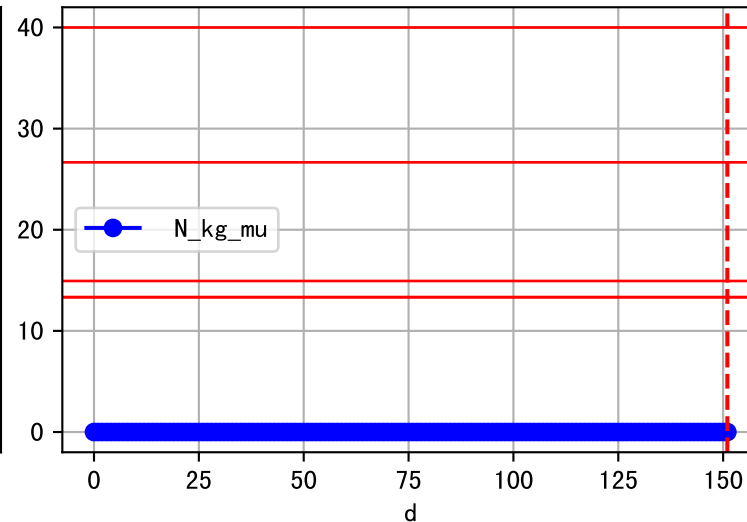
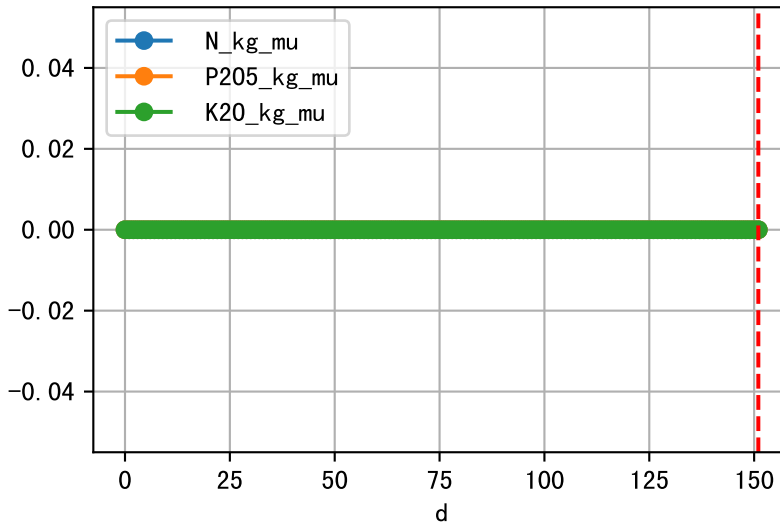
Plot ET/VN



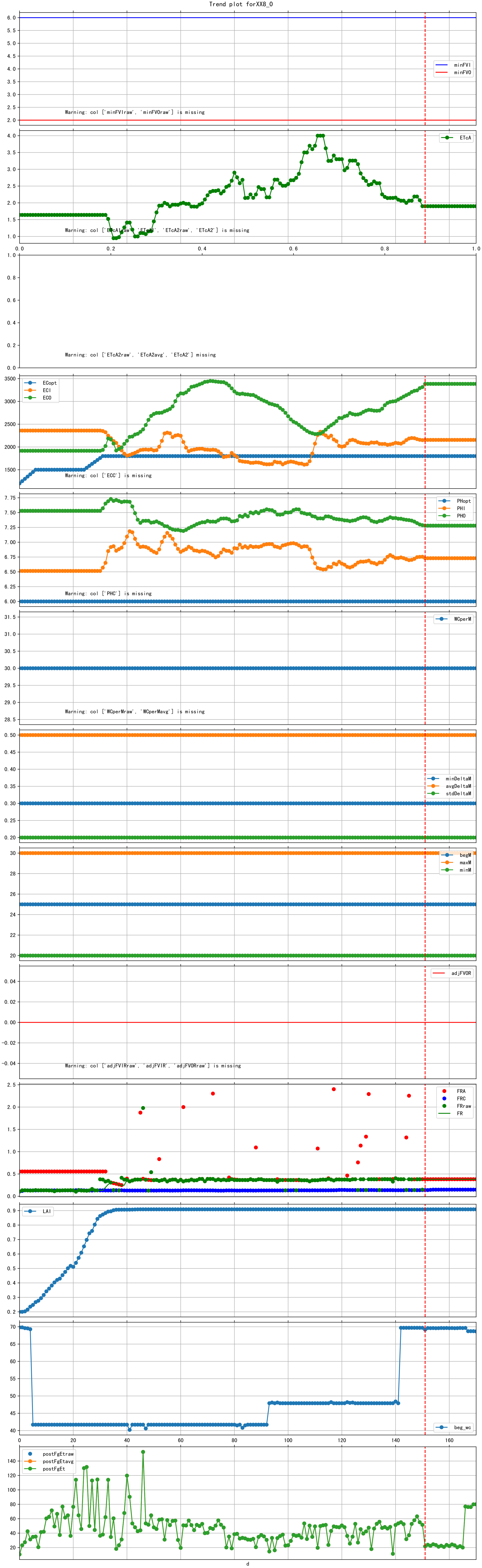
Plot Fv and fertilizer usage



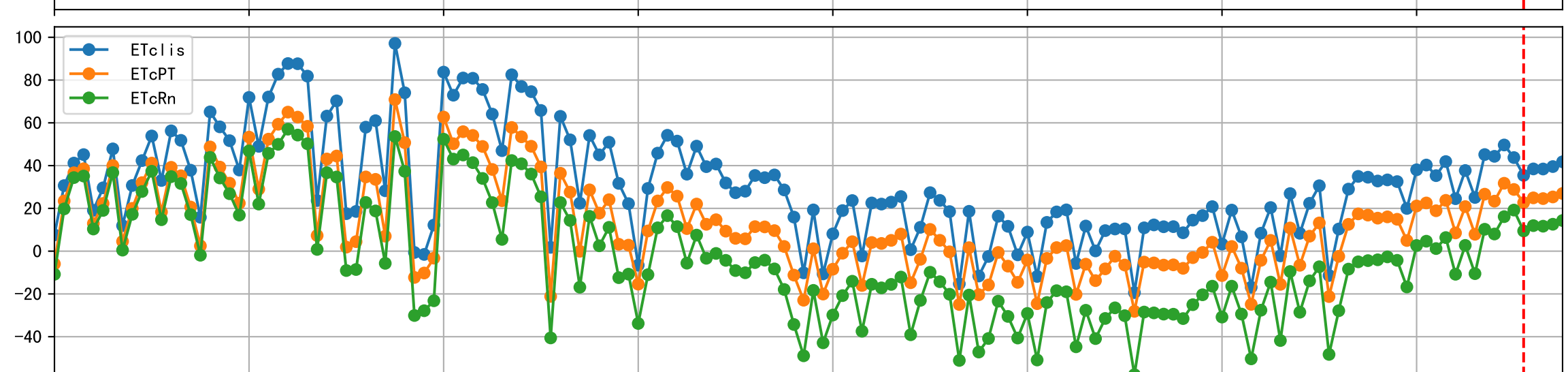
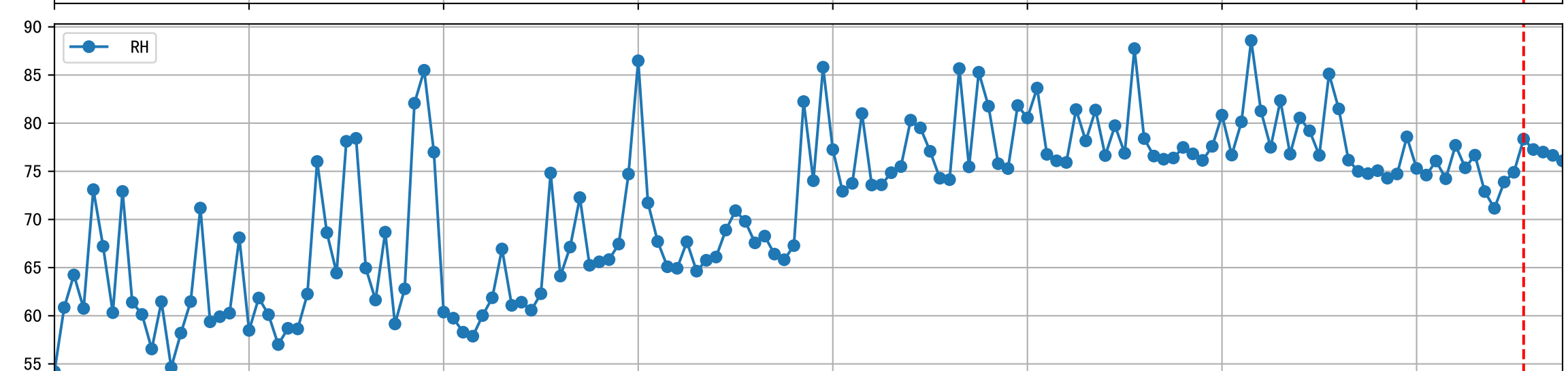
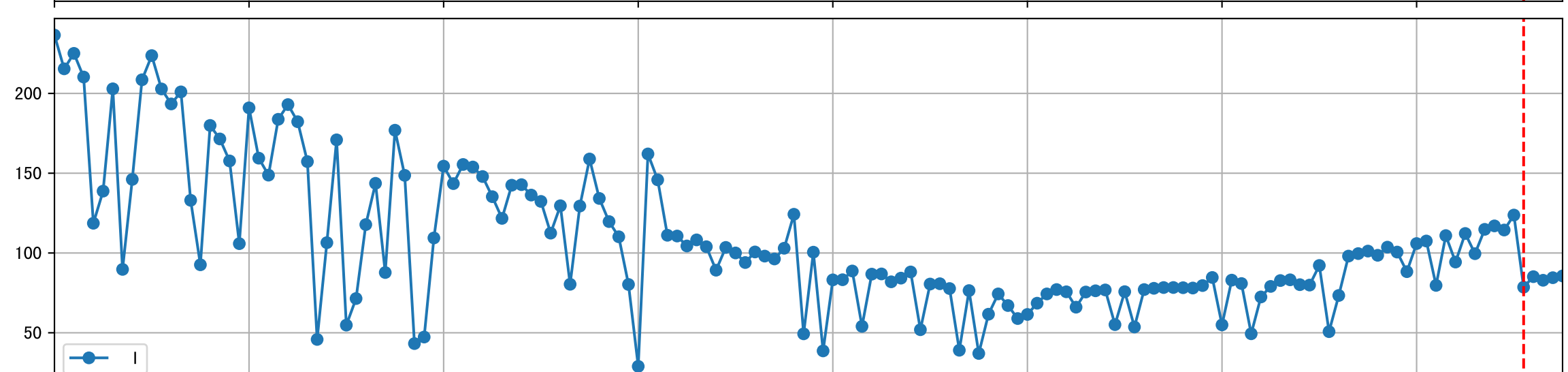
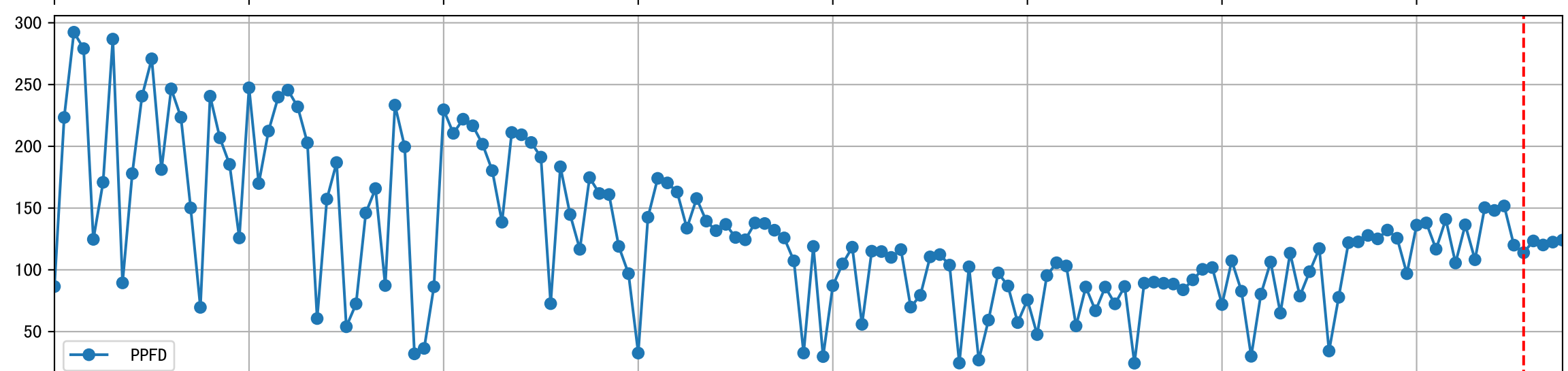
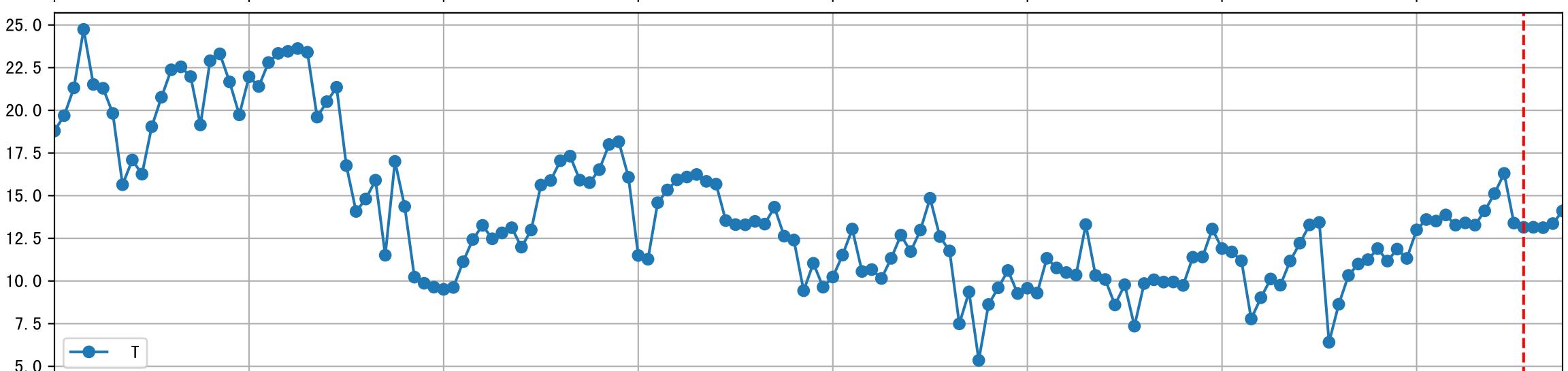
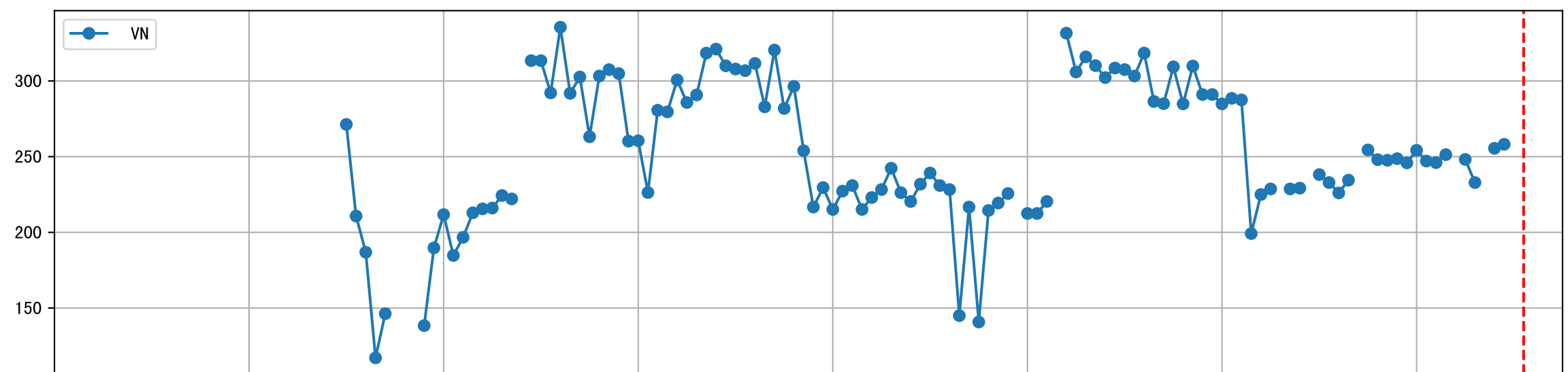
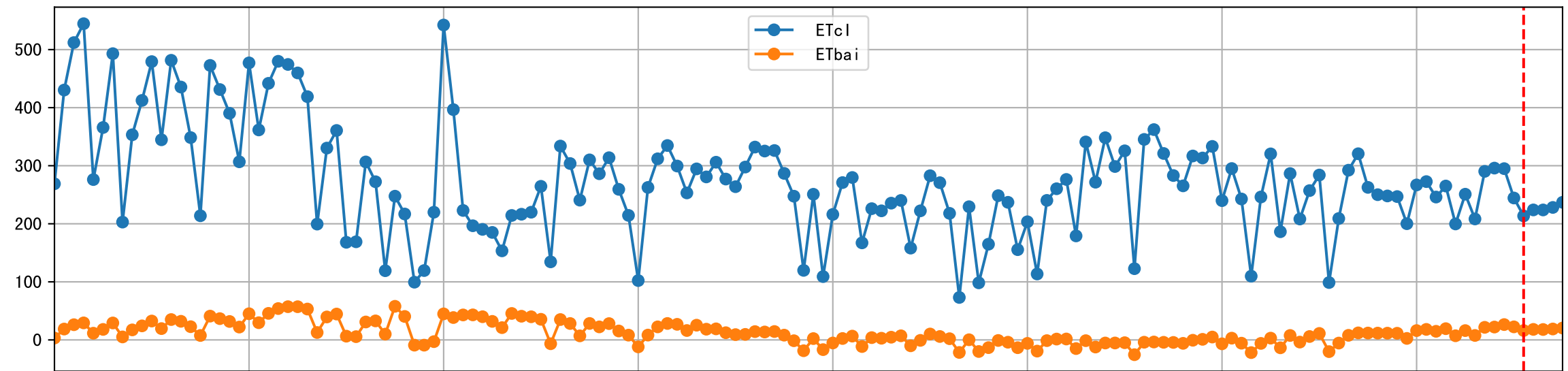
Fertilizer Range Source: kerleyL, kerleyH, UnivFL, TNAI, Haifa

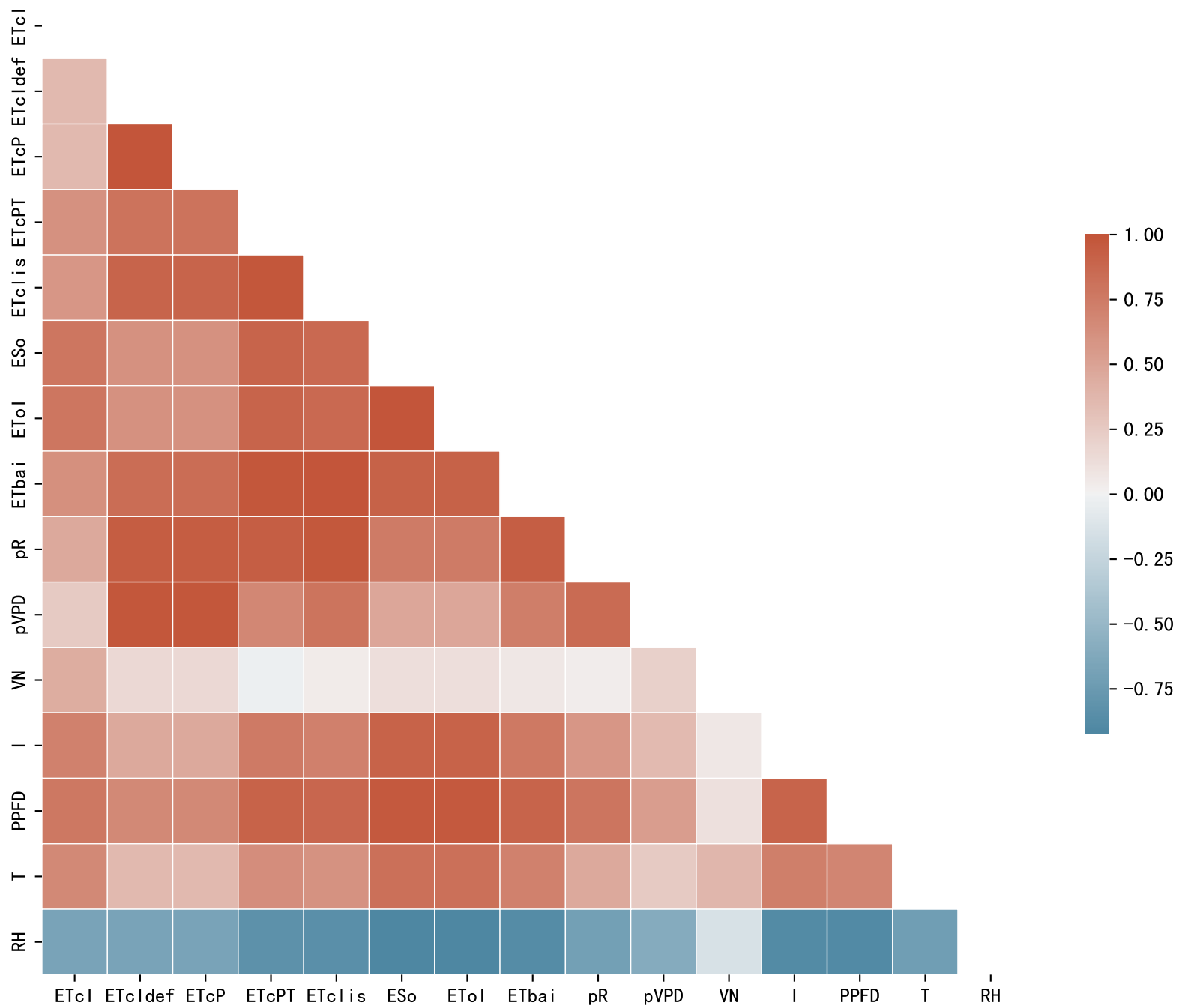


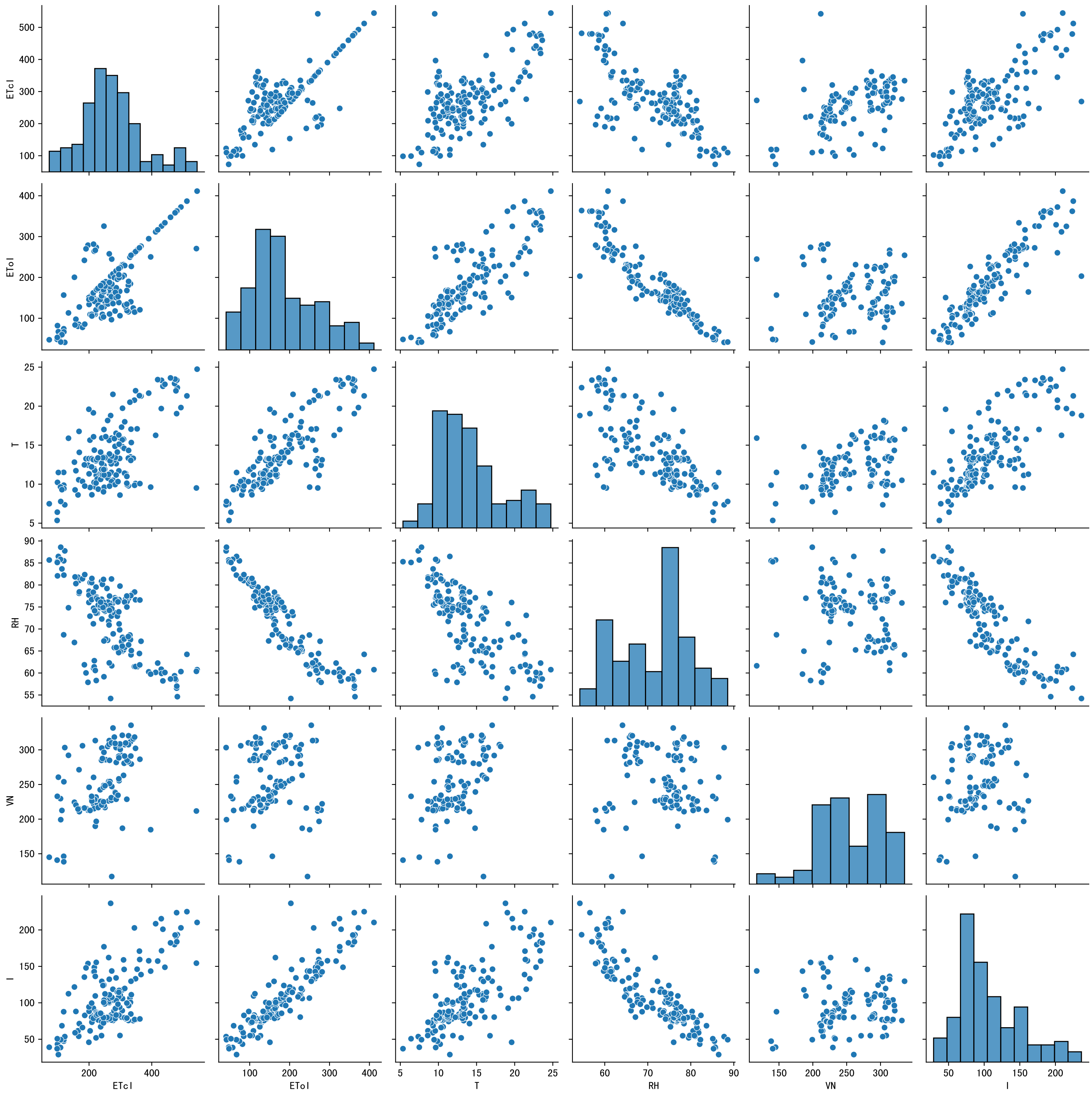
Trend plot forXX8\_0

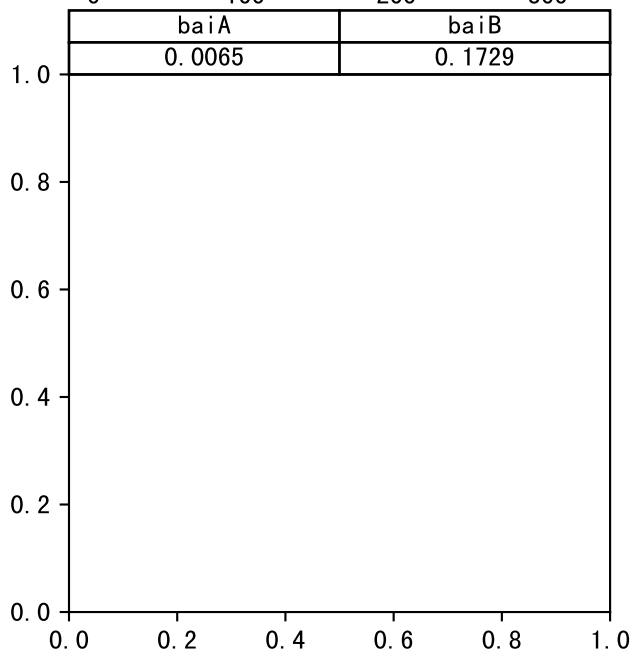
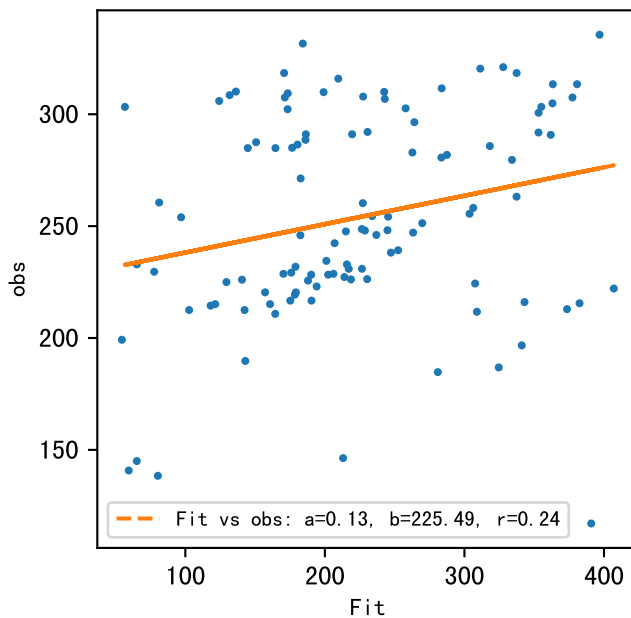
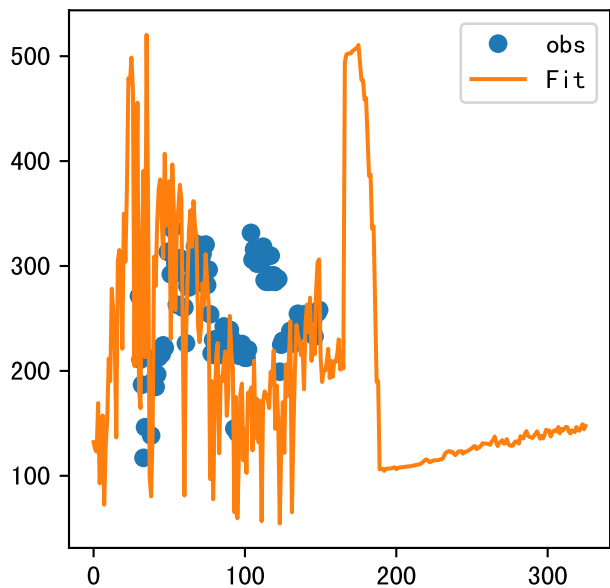


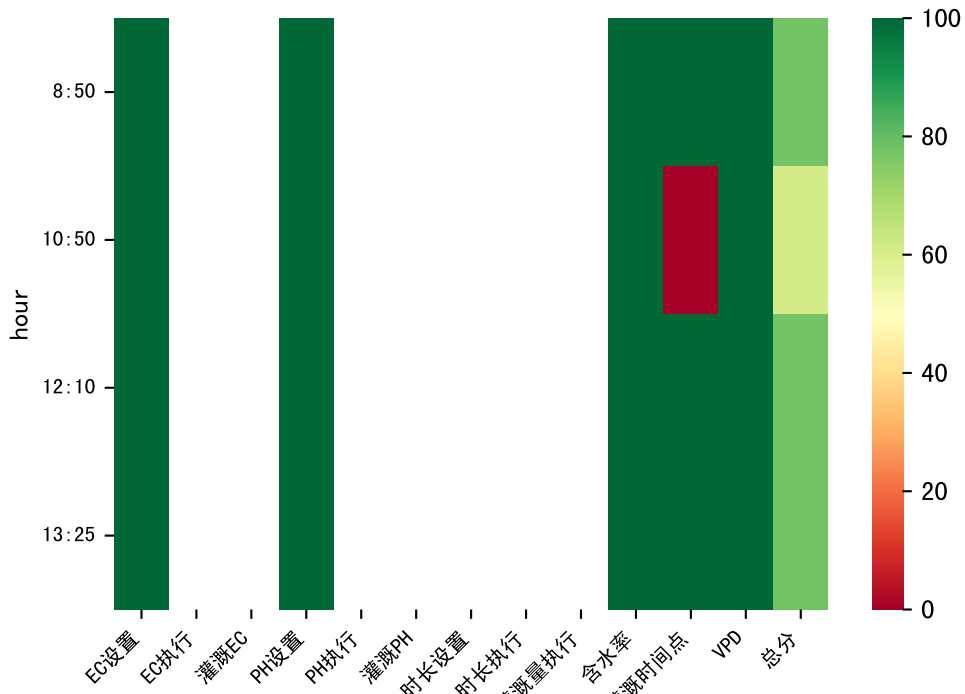




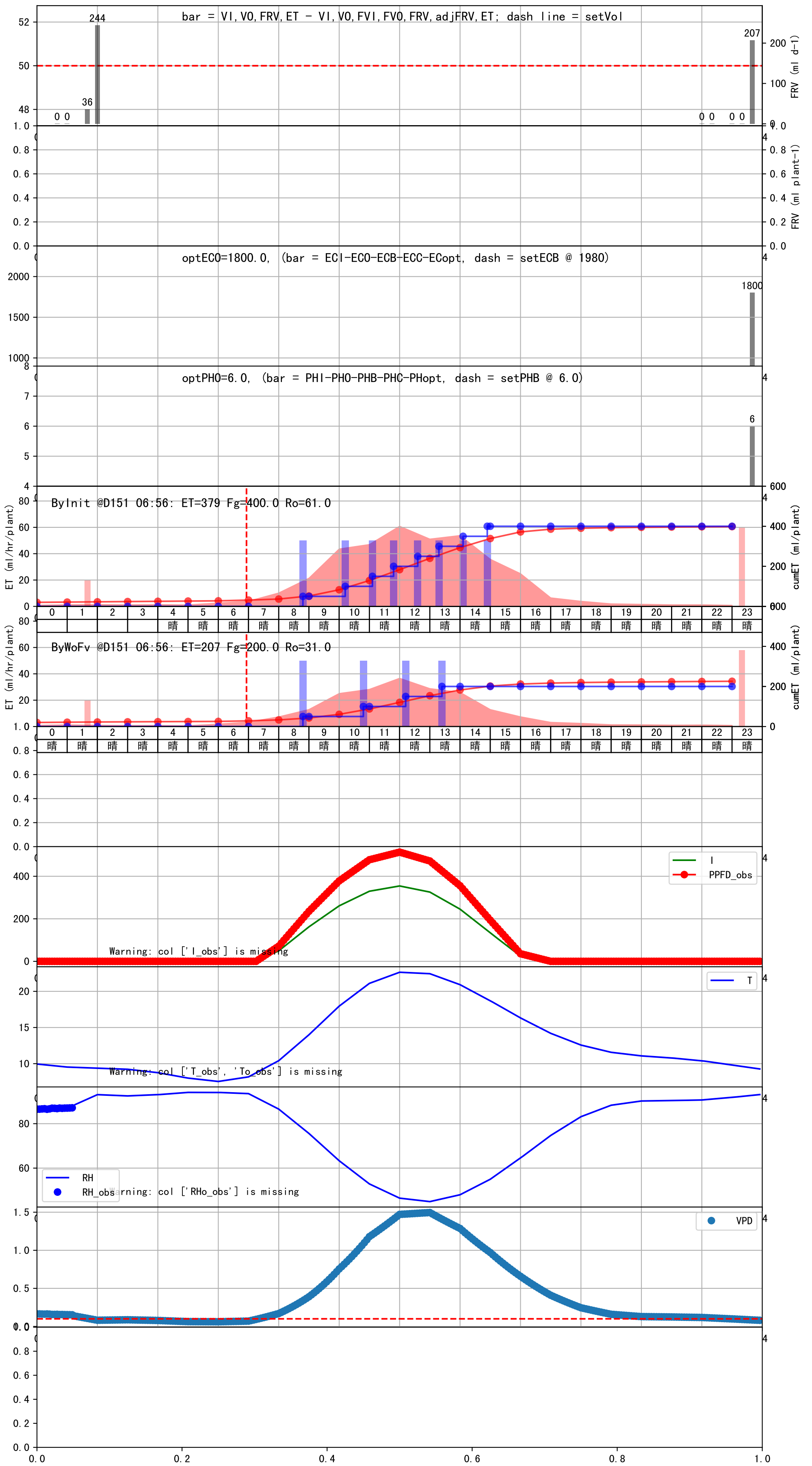


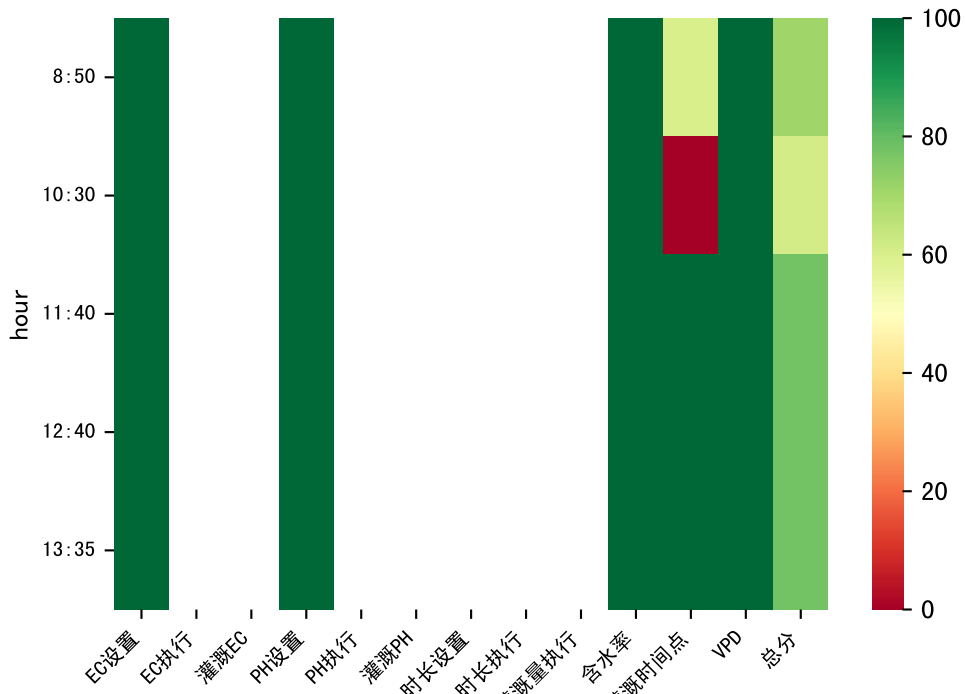






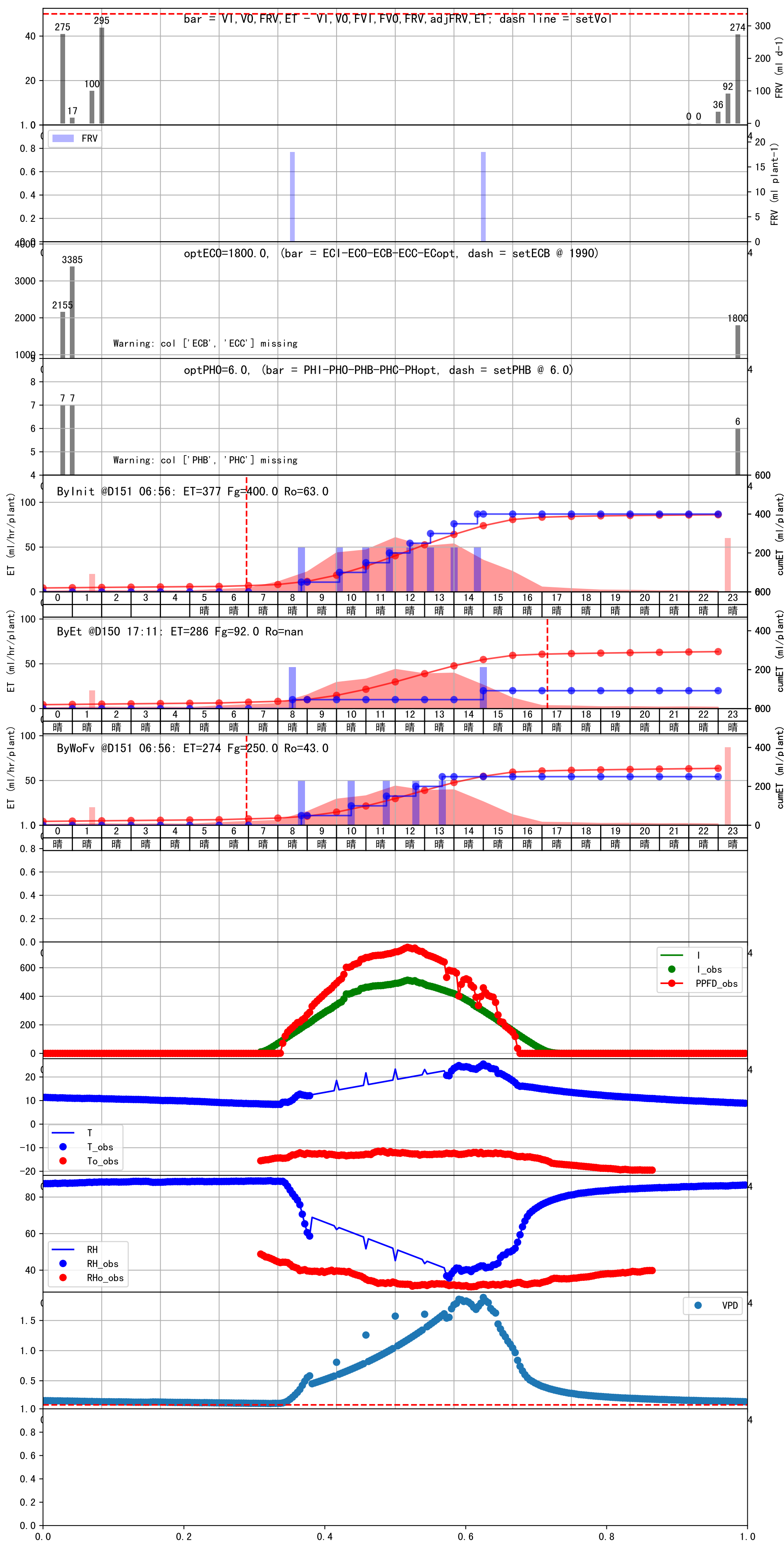
时间	灌溉时长(秒)	灌溉量(毫升/株)	灌溉总量(方/次)	天气	注释
08:50	132	50.0	0.309	晴	预期@08:50 手动 (未用传感器)
10:50	132	50.0	0.309	晴	预期@10:50 手动 (未用传感器)
12:10	132	50.0	0.309	晴	预期@12:10 手动 (未用传感器)
13:25	132	50.0	0.309	晴	预期@13:25 手动 (未用传感器)
总计	528.0 (4次)	200.0			建议进液EC: 1980, PH: 6.0

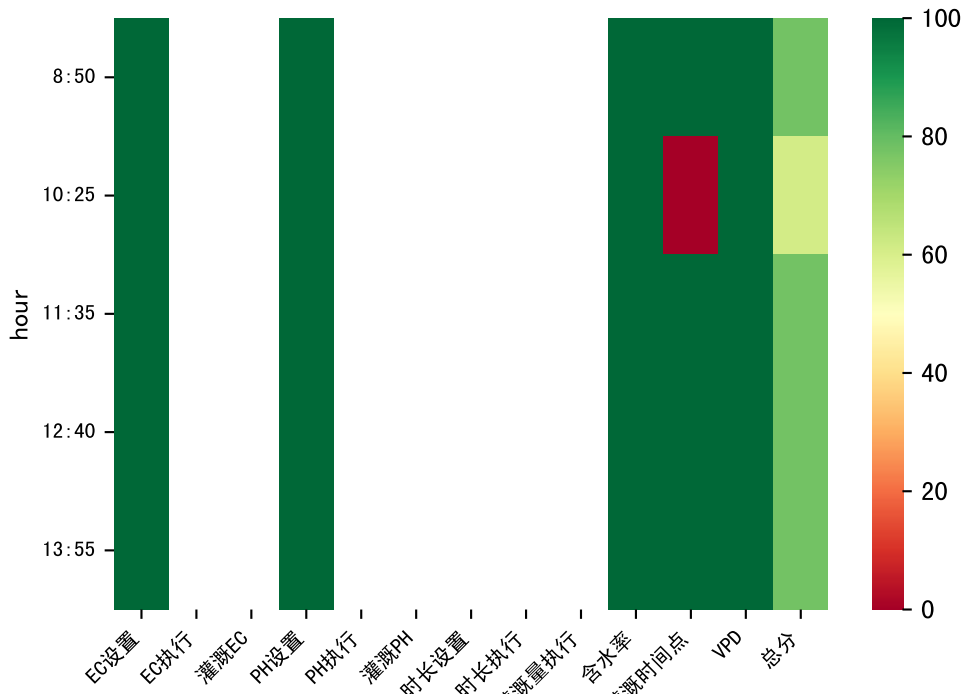




时间	灌溉时长(秒)	灌溉量(毫升/株)	灌溉总量(方/次)	天气	注释
08:50	120	50.0	0.309	晴	假设@08:50 手动 (未用传感器)
10:30	120	50.0	0.309	晴	假设@10:30 手动 (未用传感器)
11:40	120	50.0	0.309	晴	假设@11:40 手动 (未用传感器)
12:40	120	50.0	0.309	晴	假设@12:40 手动 (未用传感器)
13:35	120	50.0	0.309	晴	假设@13:35 手动 (未用传感器)
总计	600.0 (5次)	250.0			建议进液EC: 1990, PH: 6.0

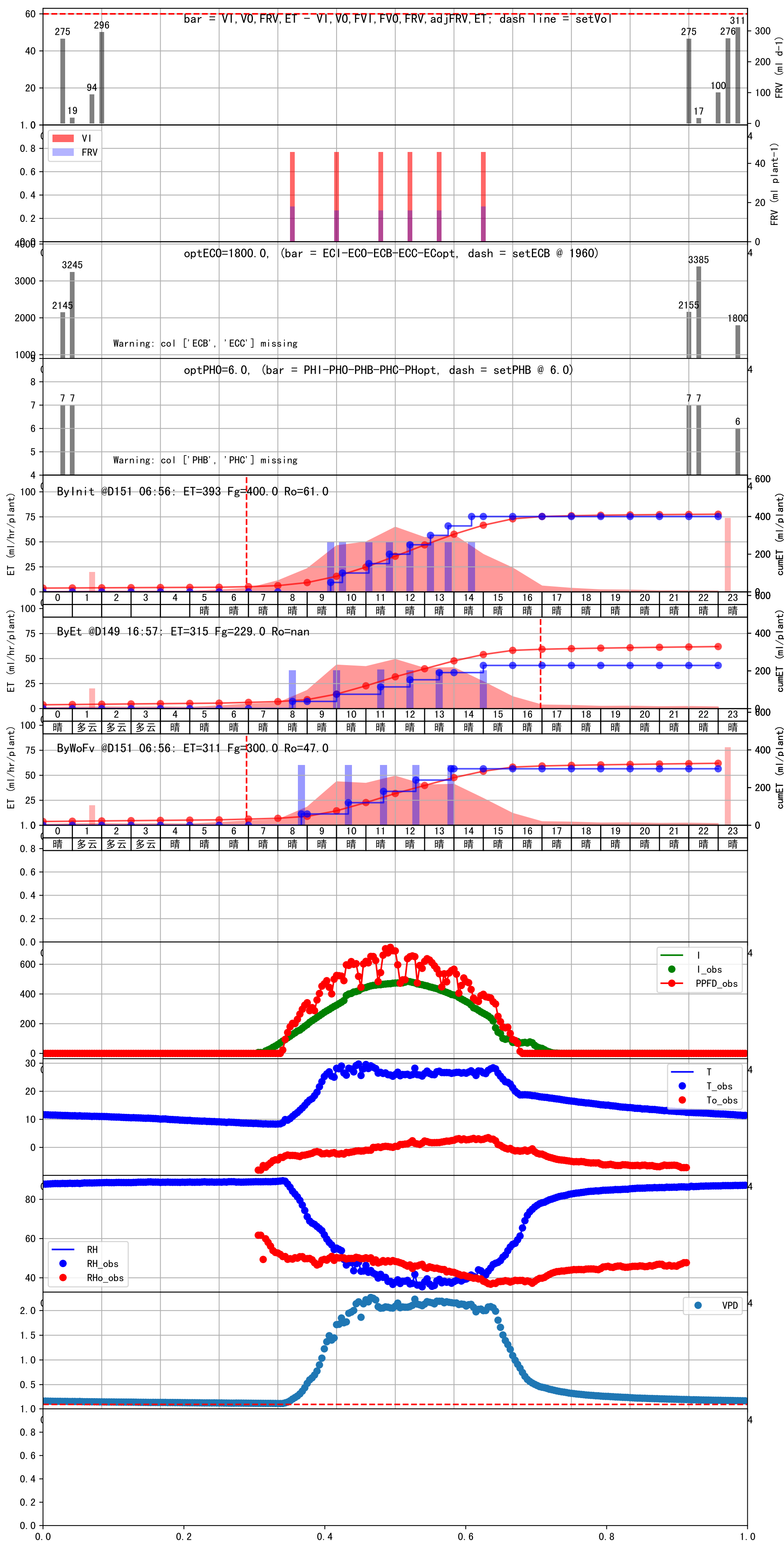
滴头平均流速偏小 (0.14 vs def 0.5), 请检查  
 施肥机灌溉量与预期值不符 (18.0 : 46.0), 可能水表需要校准  
 默认实际灌溉46.0 ml.





时间	灌溉时长(秒)	灌溉量(毫升/株)	灌溉总量(方/次)	天气	注释
08:50	120	60.0	0.37	晴	假设@08:50 手动 (未用传感器)
10:25	120	60.0	0.37	晴	假设@10:25 手动 (未用传感器)
11:35	120	60.0	0.37	晴	假设@11:35 手动 (未用传感器)
12:40	120	60.0	0.37	晴	假设@12:40 手动 (未用传感器)
13:55	120	60.0	0.37	晴	假设@13:55 手动 (未用传感器)
总计	600.0 (5次)	300.0			建议进液EC: 1960, PH: 6.0

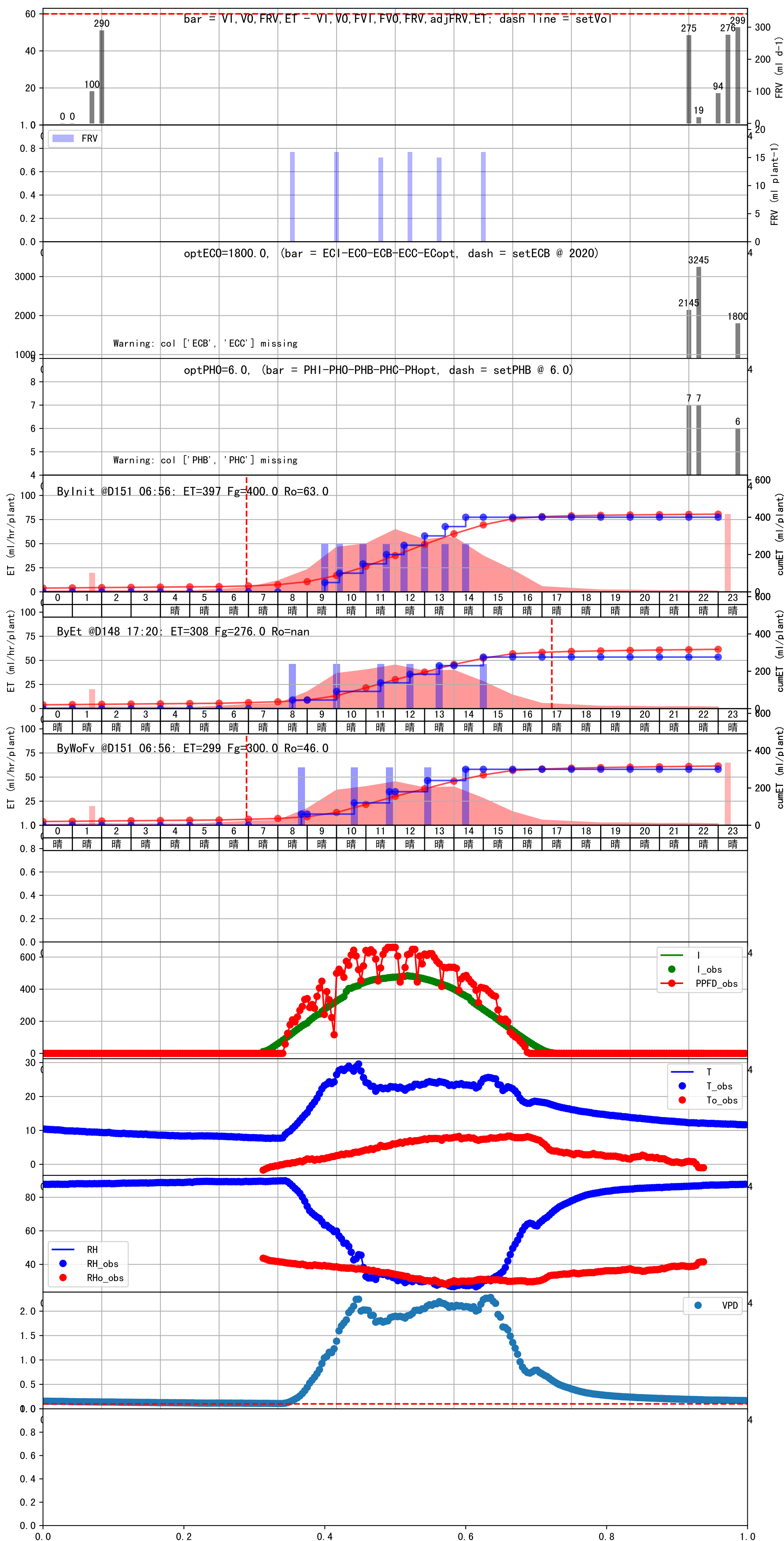
滴头平均流速偏小 (0.14 vs def 0.5), 请检查  
 施肥机灌溉量与预期值不符 (18.0 : 46.0), 可能水表需要校准  
 上次灌溉时长未按模型建议 (120 vs 158.0)  
 默认实际灌溉46.0 ml.





时间	灌溉时长(秒)	灌溉量(毫升/株)	灌溉总量(方/次)	天气	注释
08:50	120	60.0	0.37	晴	假设@08:50 手动 (未用传感器)
10:35	120	60.0	0.37	晴	假设@10:35 手动 (未用传感器)
11:50	120	60.0	0.37	晴	假设@11:50 手动 (未用传感器)
13:05	120	60.0	0.37	晴	假设@13:05 手动 (未用传感器)
14:25	120	60.0	0.37	晴	假设@14:25 手动 (未用传感器)
总计	600.0 (5次)	300.0			建议进液EC: 2020, PH: 6.0

滴头平均流速偏小 (0.14 vs def 0.5), 请检查  
 施肥机灌溉量与预期值不符 (16.0 : 46.0), 可能水表需要校准  
 上次灌溉时长未按模型建议 (120 vs 158.0)  
 默认实际灌溉46.0 ml.





时间	灌溉时长(秒)	灌溉量(毫升/株)	灌溉总量(方/次)	天气	注释
08:55	120	50.0	0.309	晴	假设@08:55 手动 (未用传感器)
10:25	120	50.0	0.309	晴	假设@10:25 手动 (未用传感器)
11:30	120	50.0	0.309	晴	假设@11:30 手动 (未用传感器)
12:30	120	50.0	0.309	晴	假设@12:30 手动 (未用传感器)
13:30	120	50.0	0.309	晴	假设@13:30 手动 (未用传感器)
总计	600.0 (5次)	250.0			建议进液EC: 2030, PH: 6.0

滴头平均流速偏小 (0.14 vs def 0.5), 请检查  
 施肥机灌溉量与预期值不符 (16.0 : 46.0), 可能水表需要校准  
 默认实际灌溉46.0 ml.

