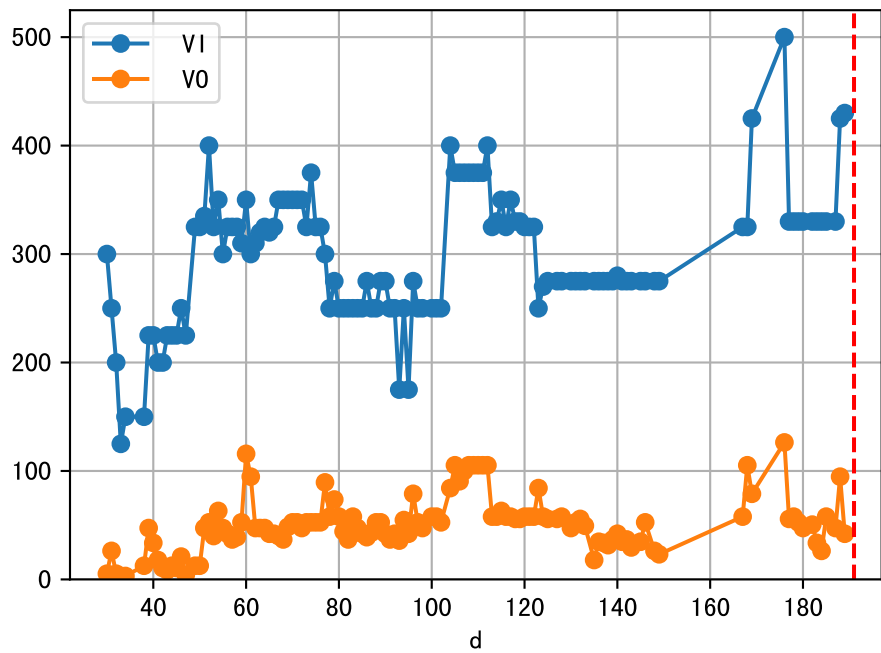
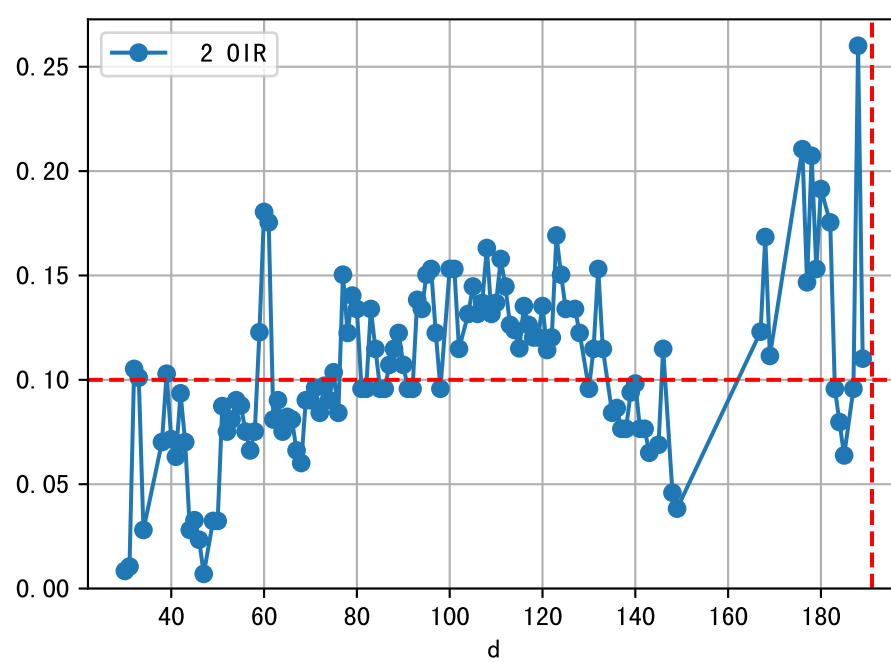
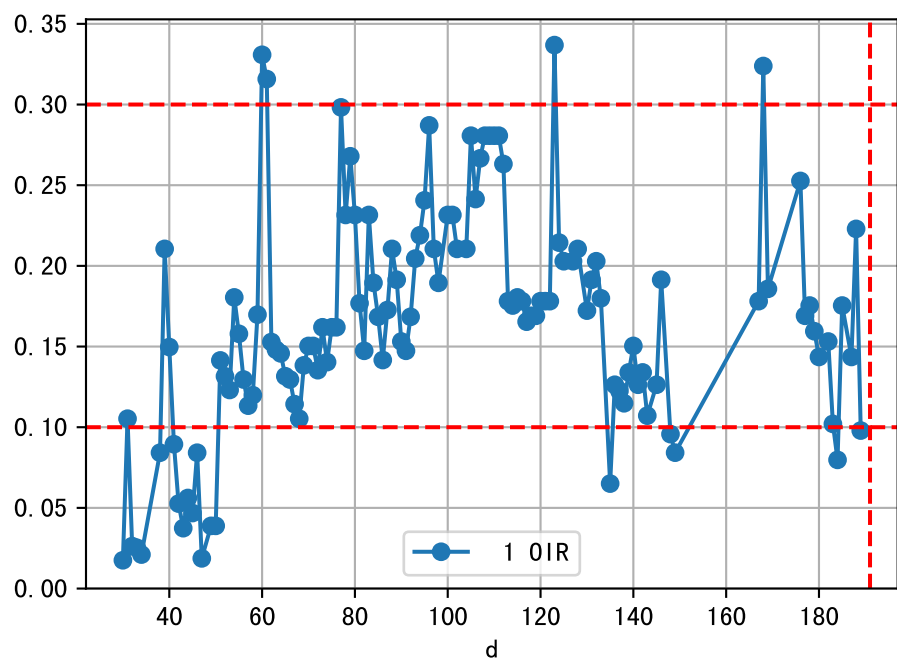
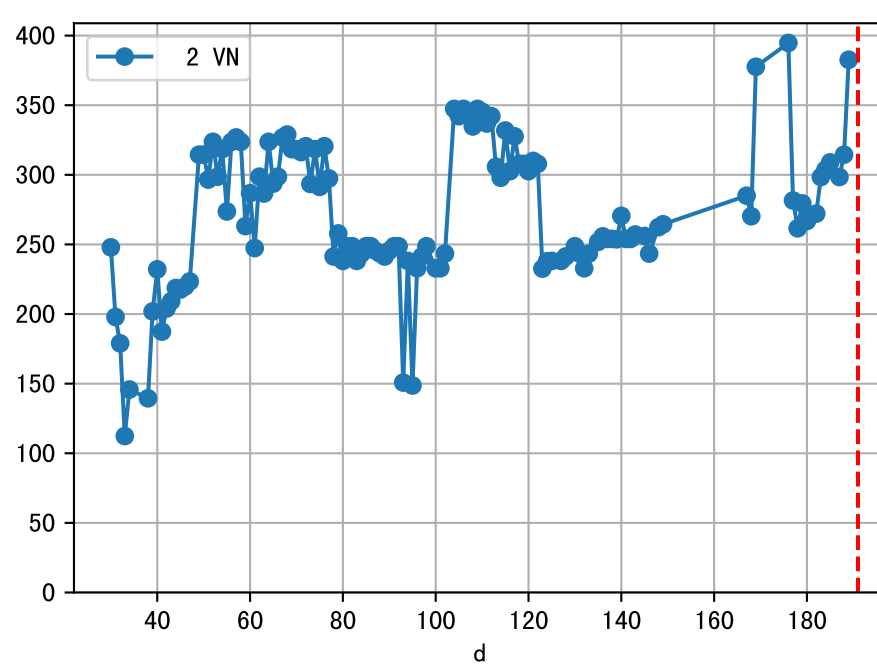
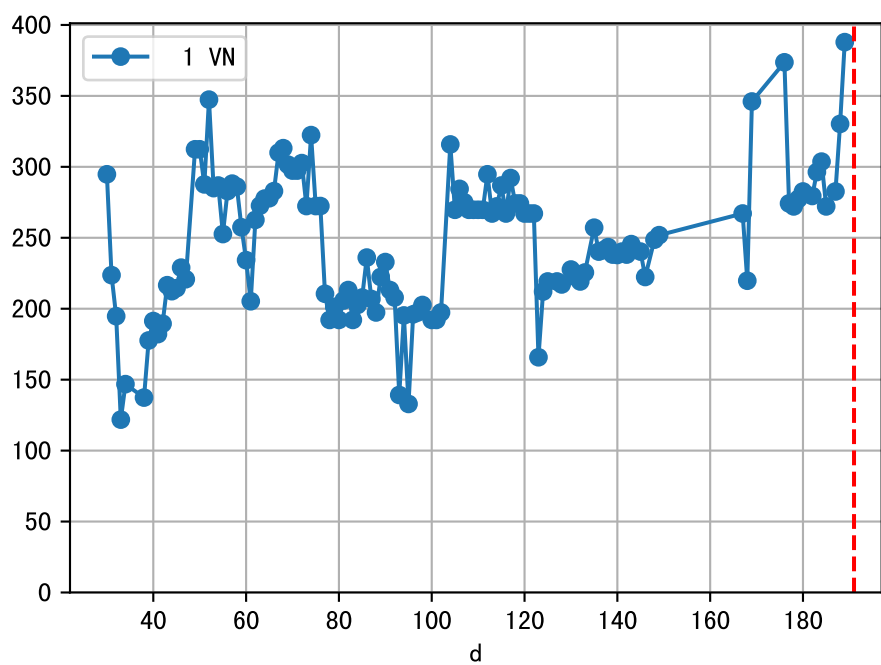
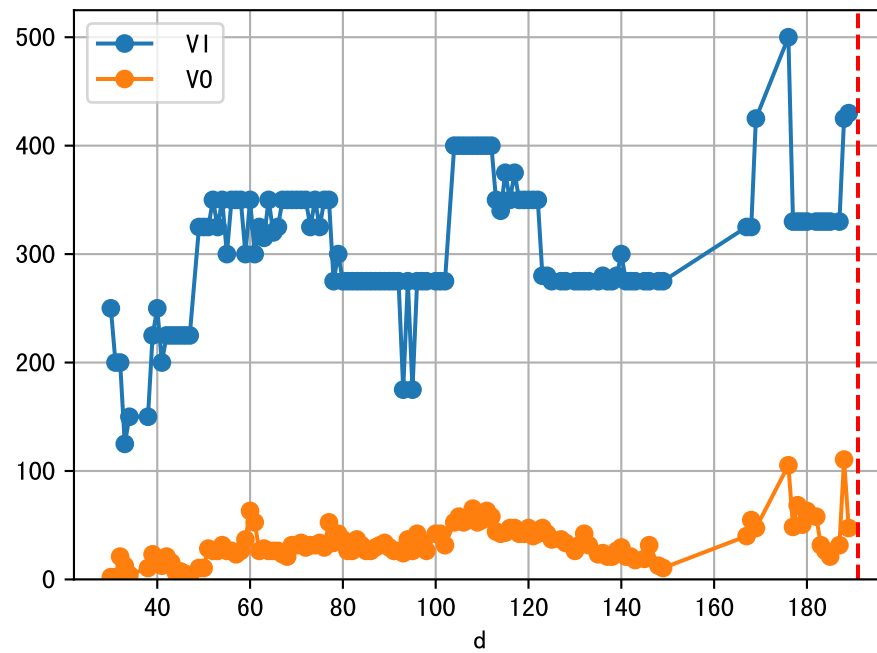


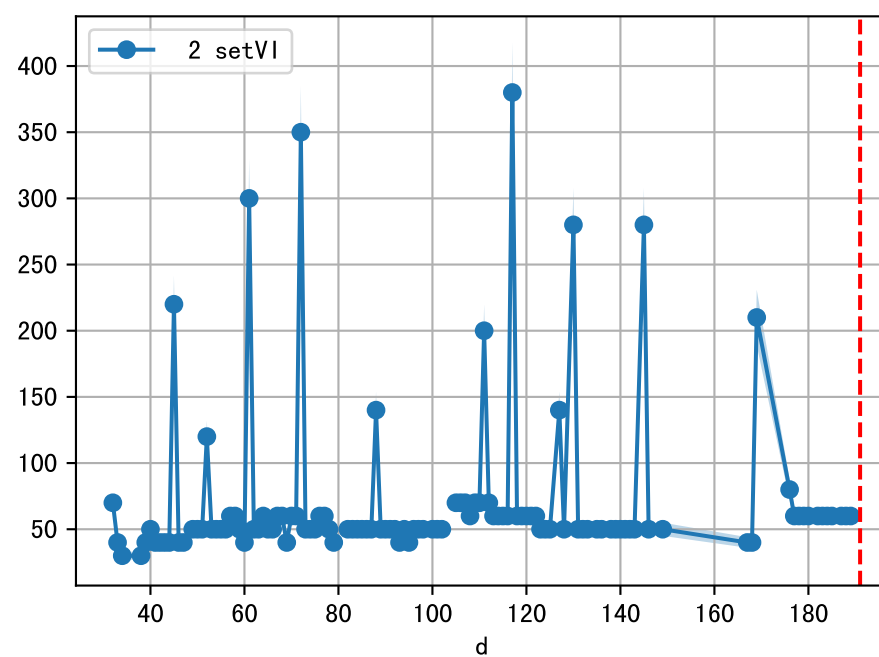
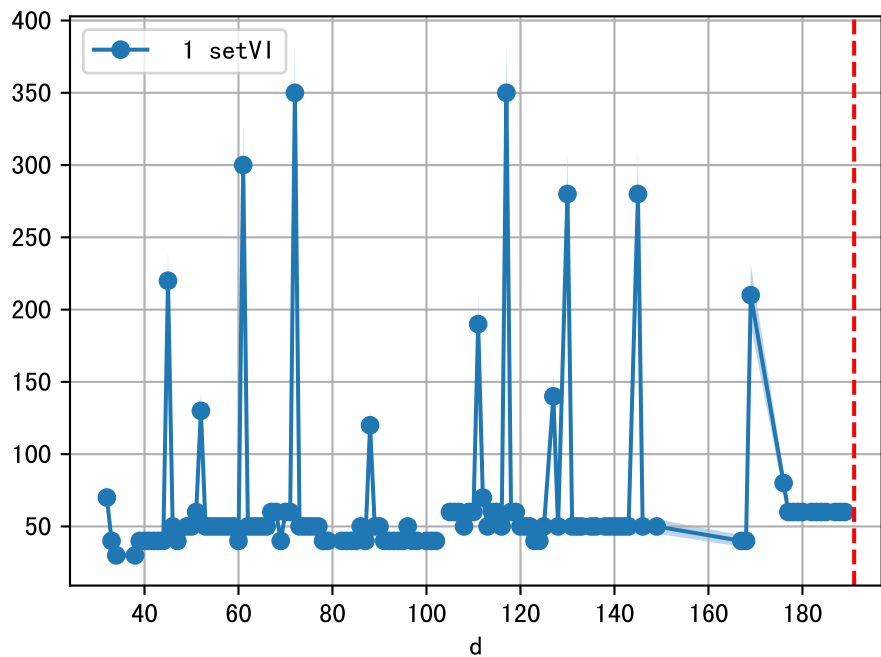
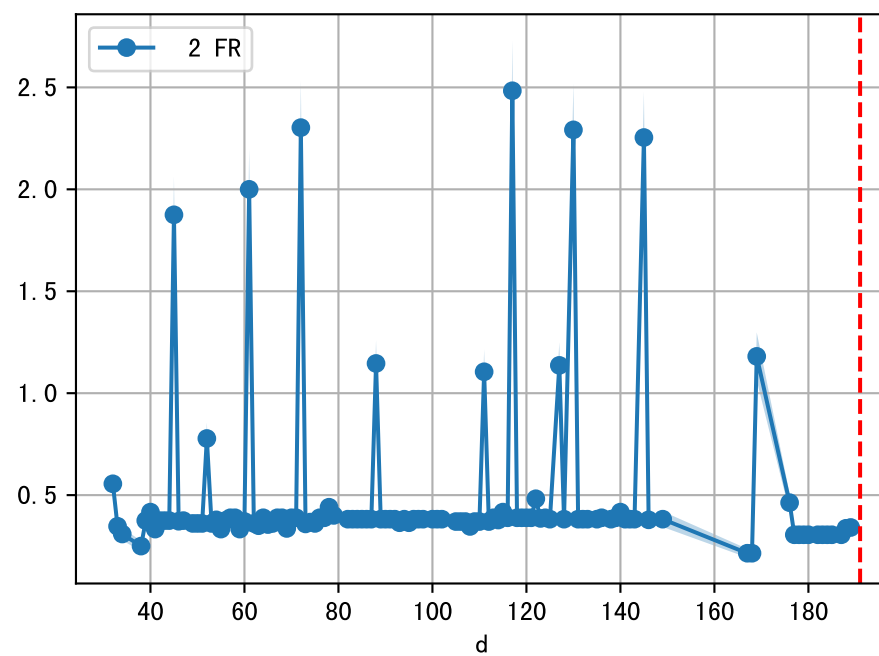
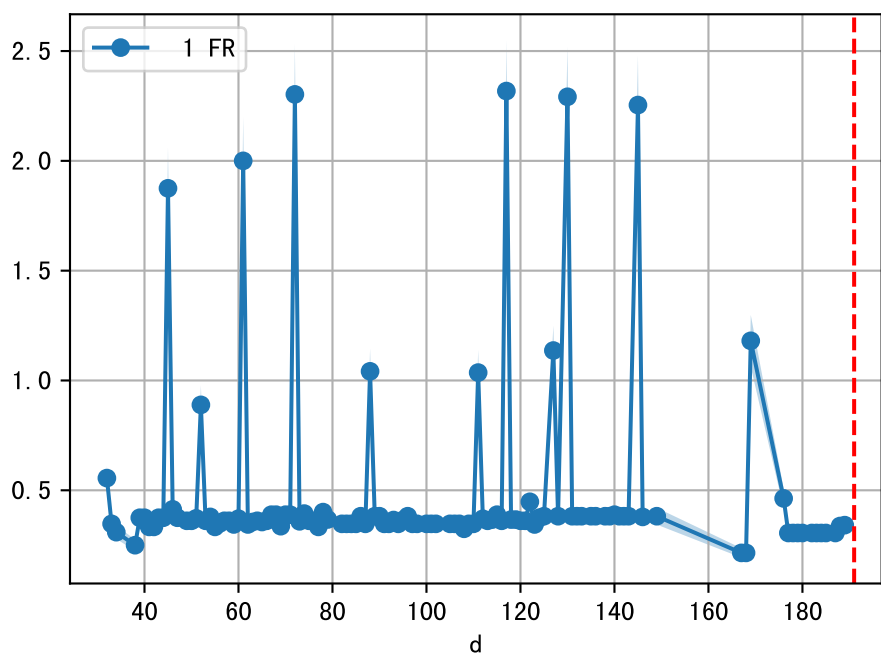
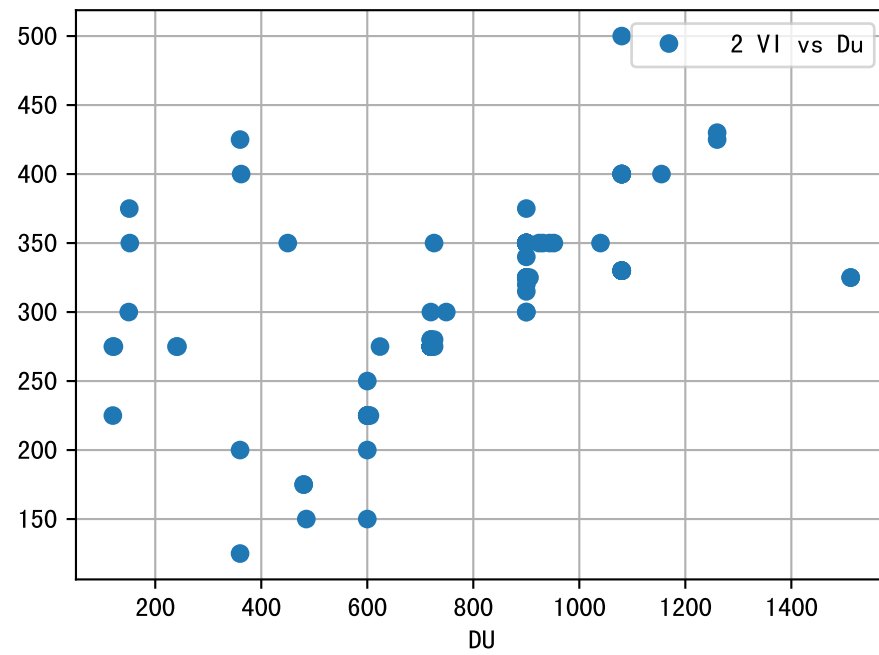
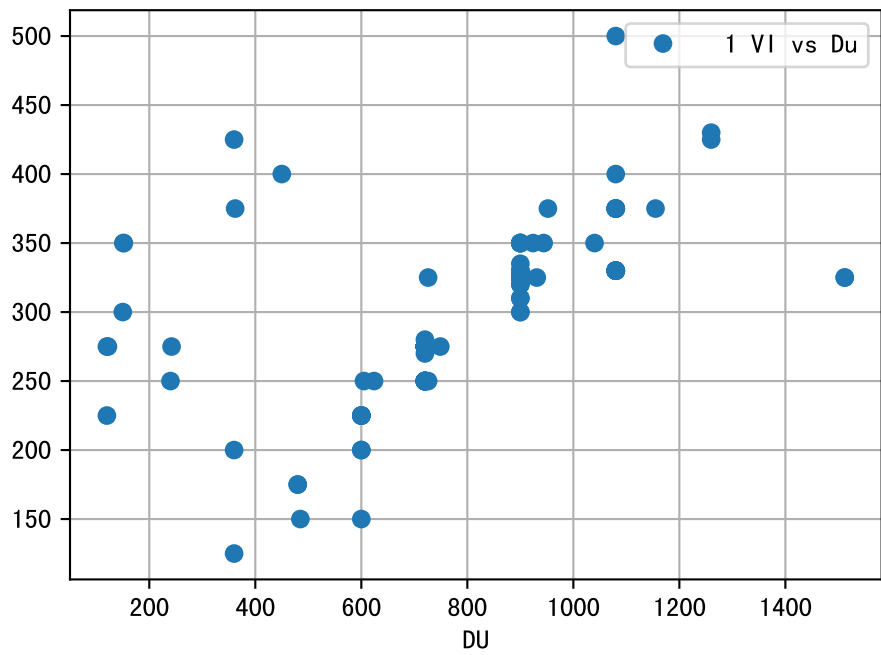
FgArea: [' 0' ]  
SS40 XX8  
2026-03-18 (Day 191)

fgNum 1 (at\_row = 3.0)

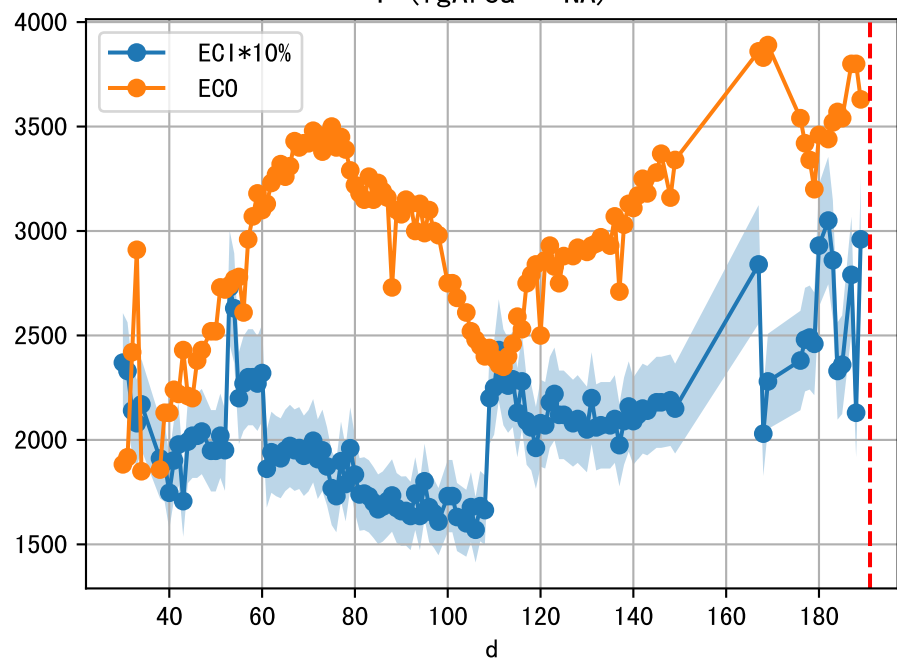


fgNum 2 (at\_row = 35.0)

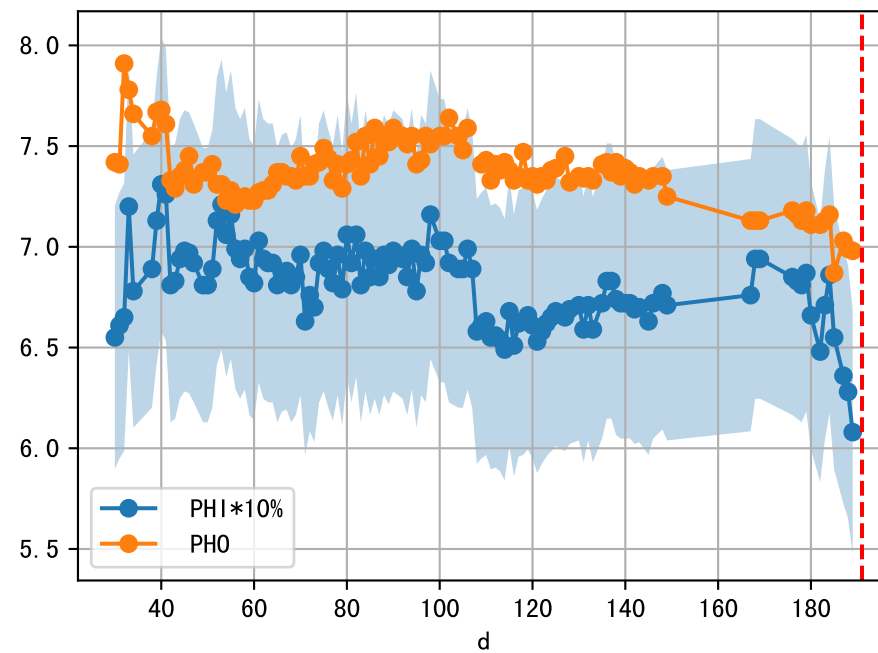
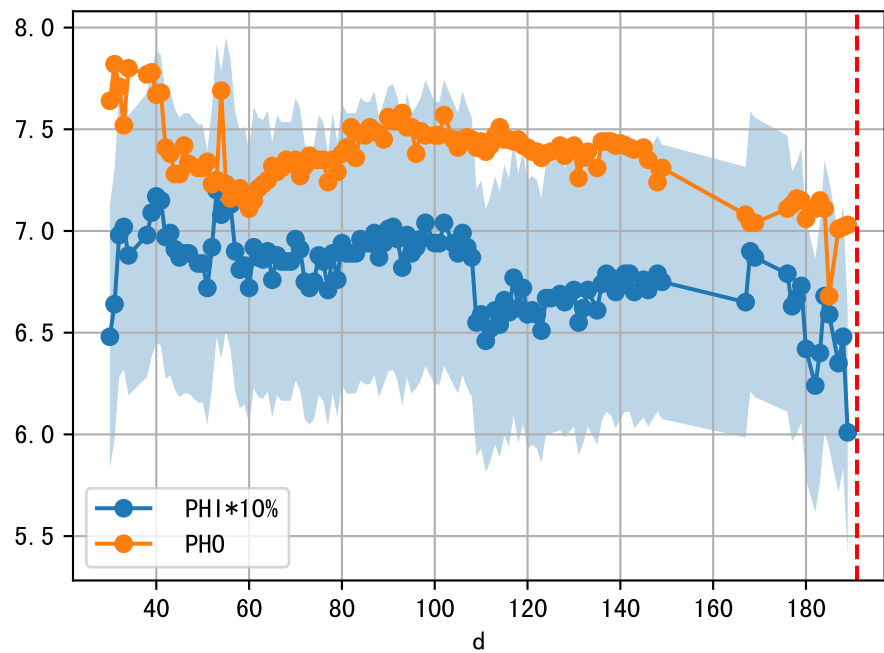
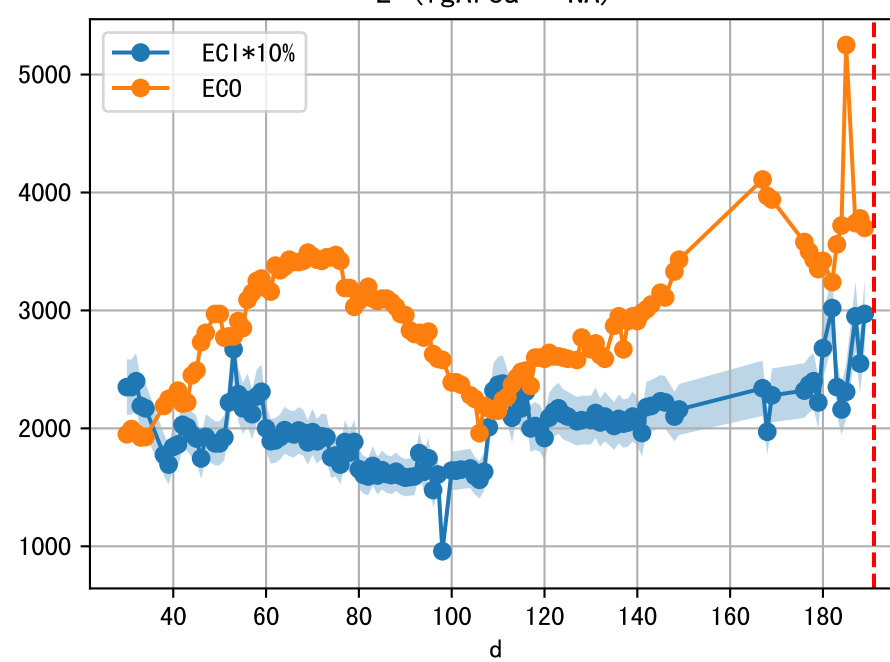




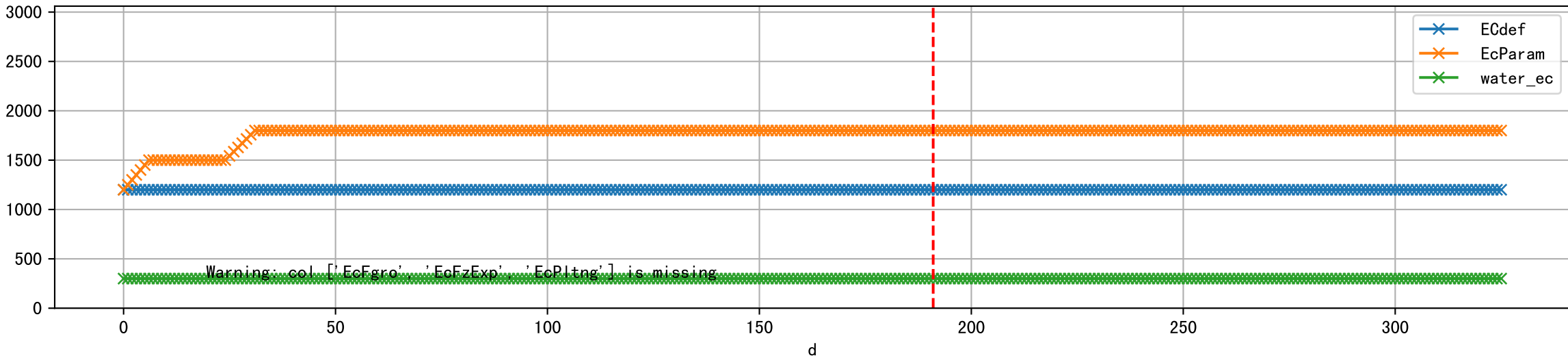
1 (fgArea = NA)



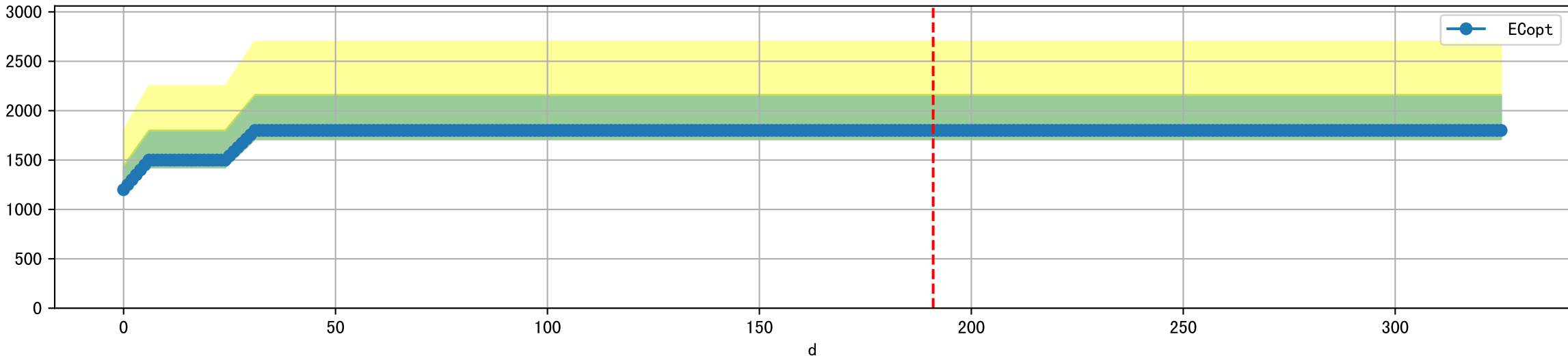
2 (fgArea = NA)



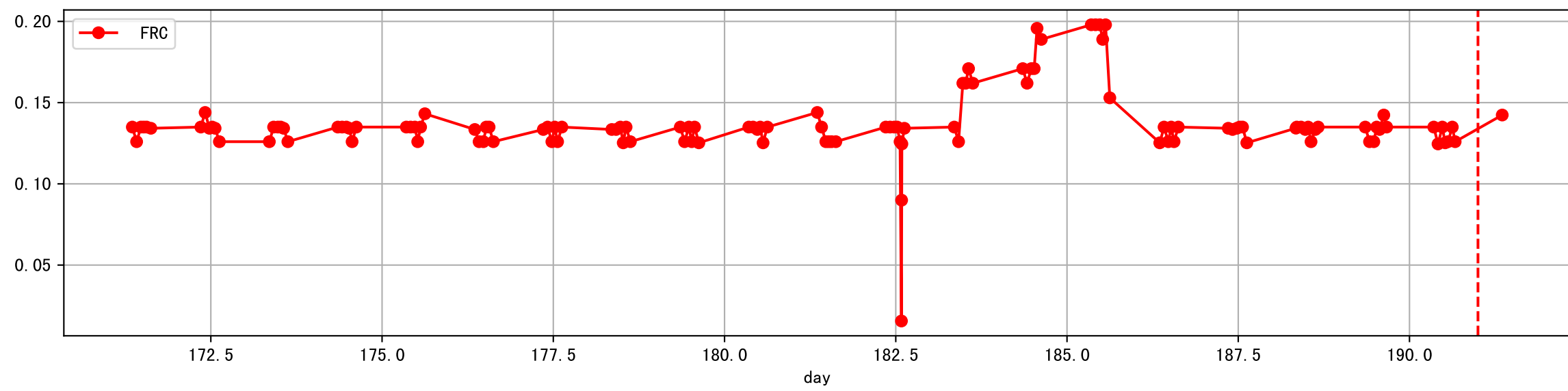
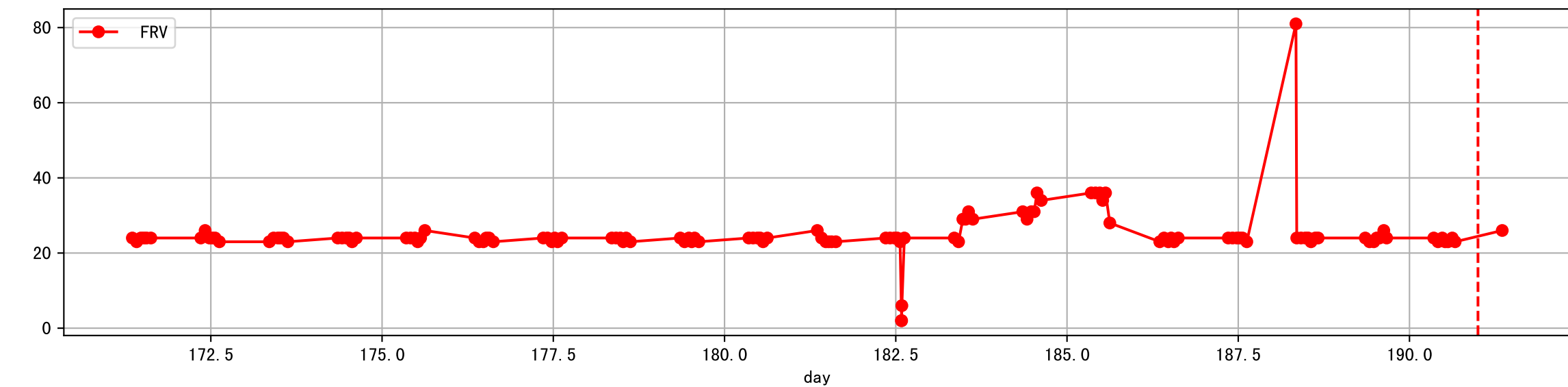
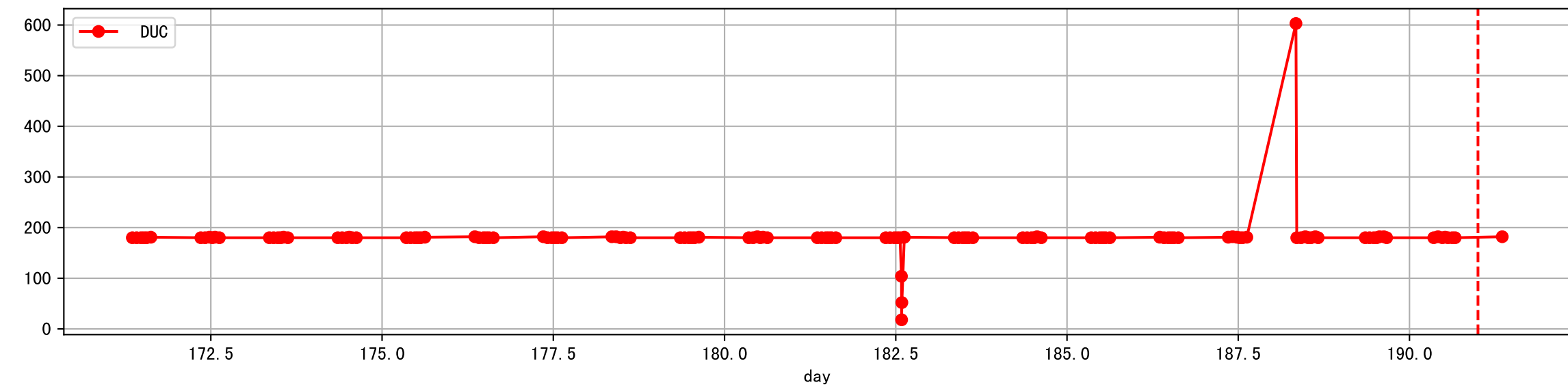
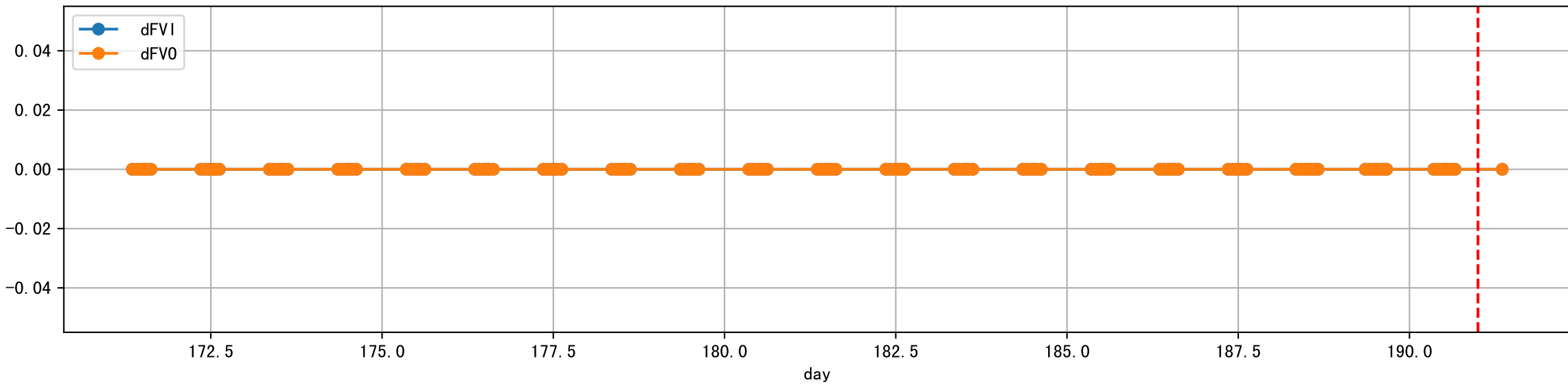
Plot [['EcFgro', 'EcFzExp', 'EcPltng', 'ECdef', 'EcParam', 'water\_ec']]



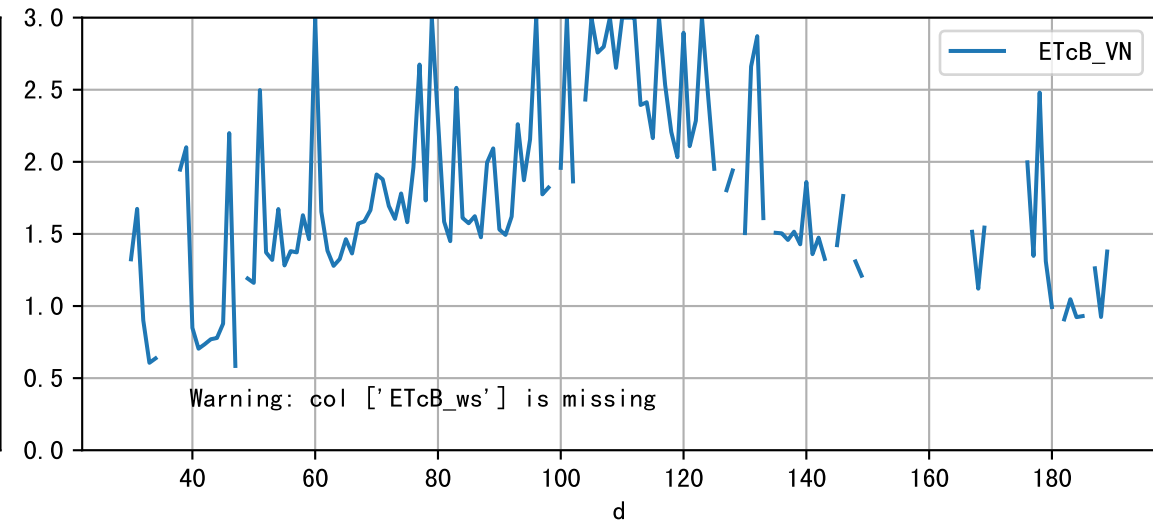
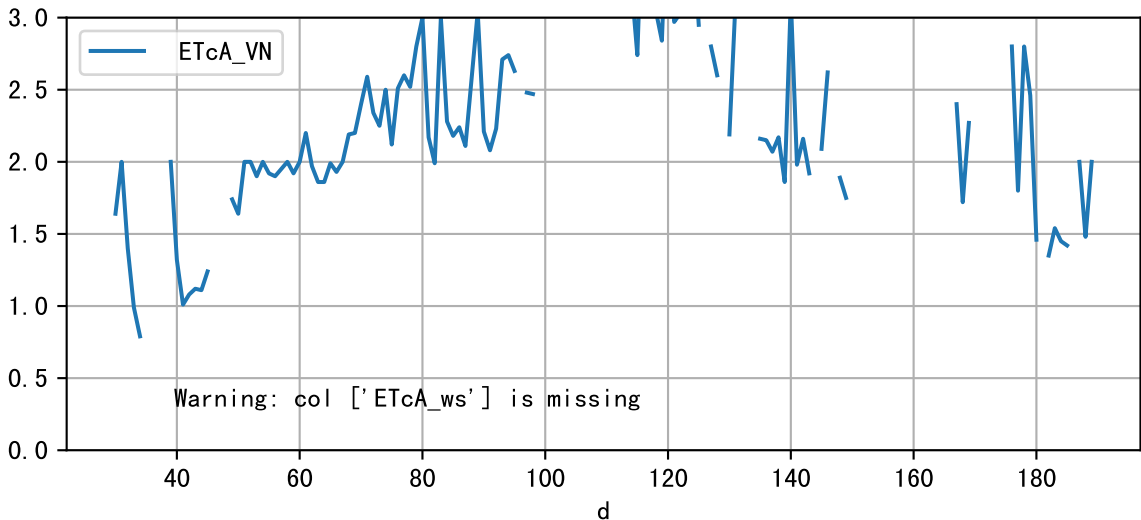
Plot [' ECopt ']



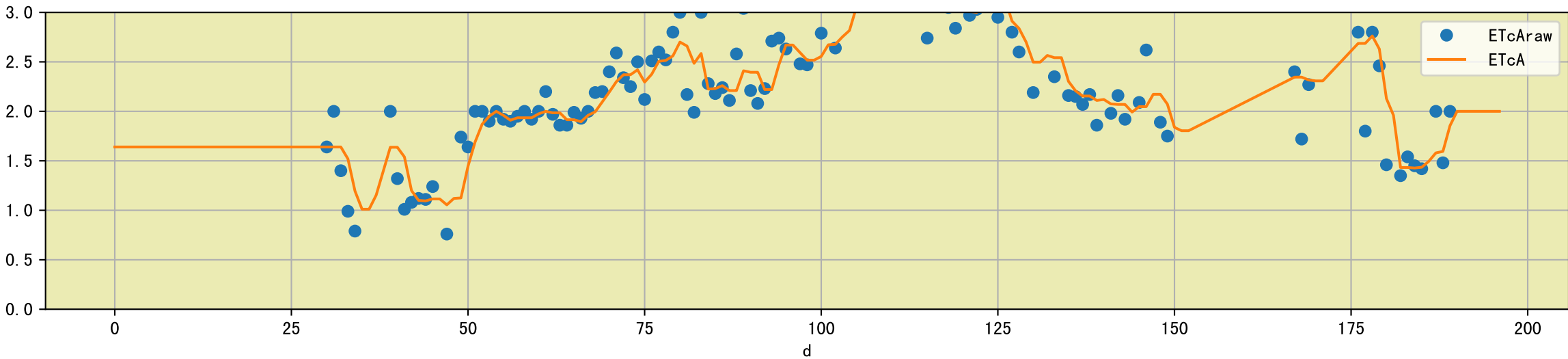
Plot Sensor and FgRec Data



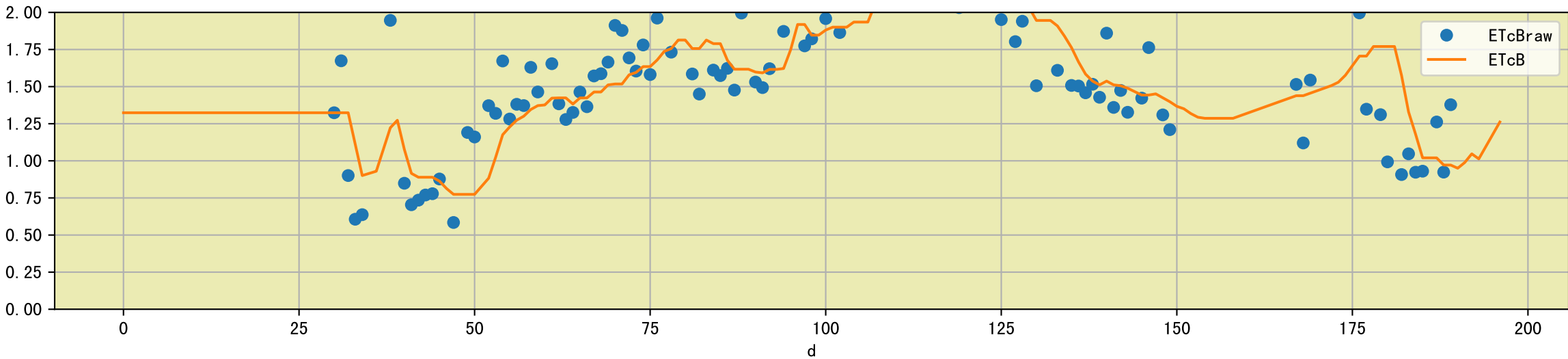
Plot [['ETcA\_VN', 'ETcA\_ws'], ['ETcB\_VN', 'ETcB\_ws']]

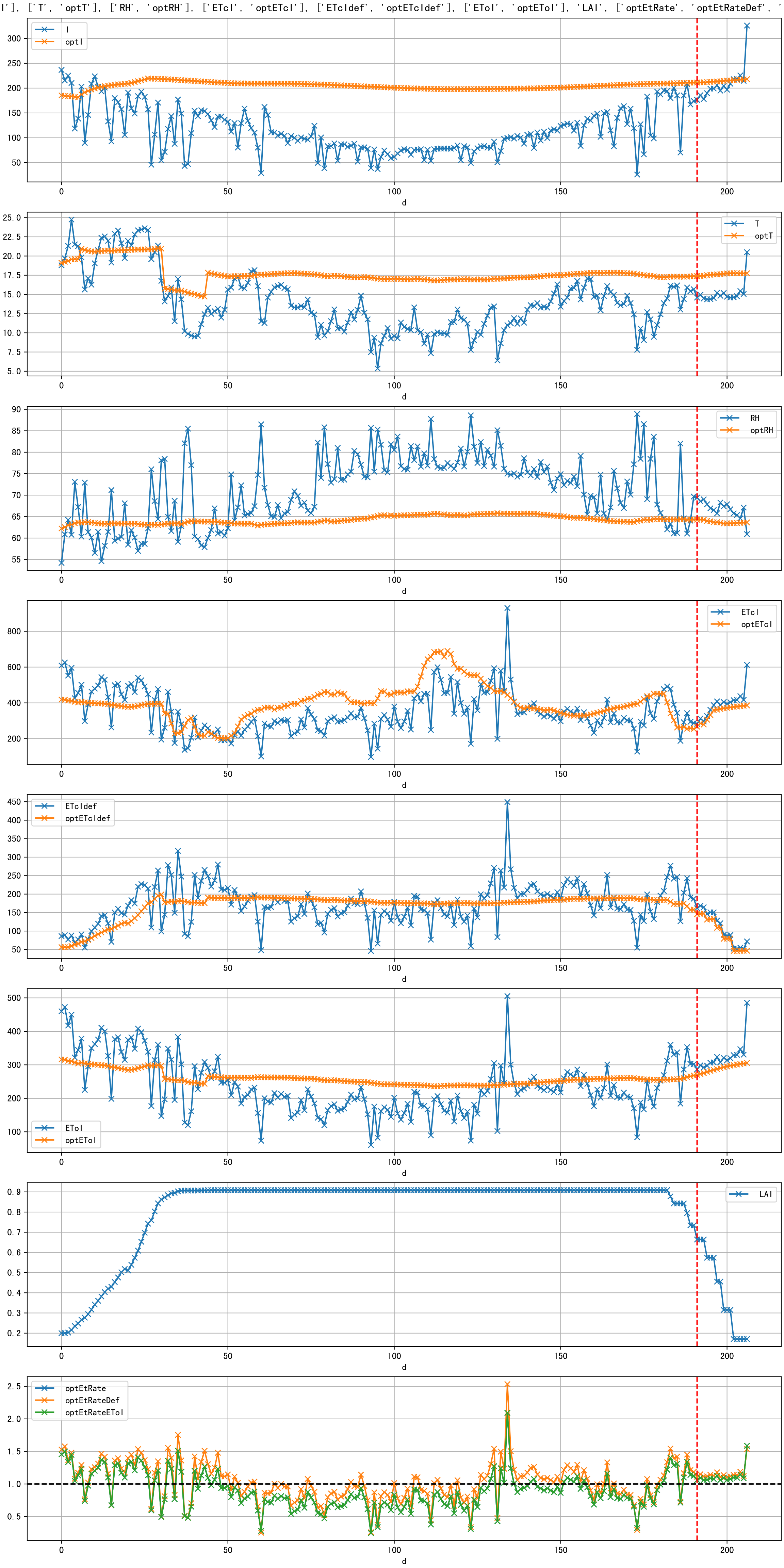


Plot [['ETcAraw:o', 'ETcA']]

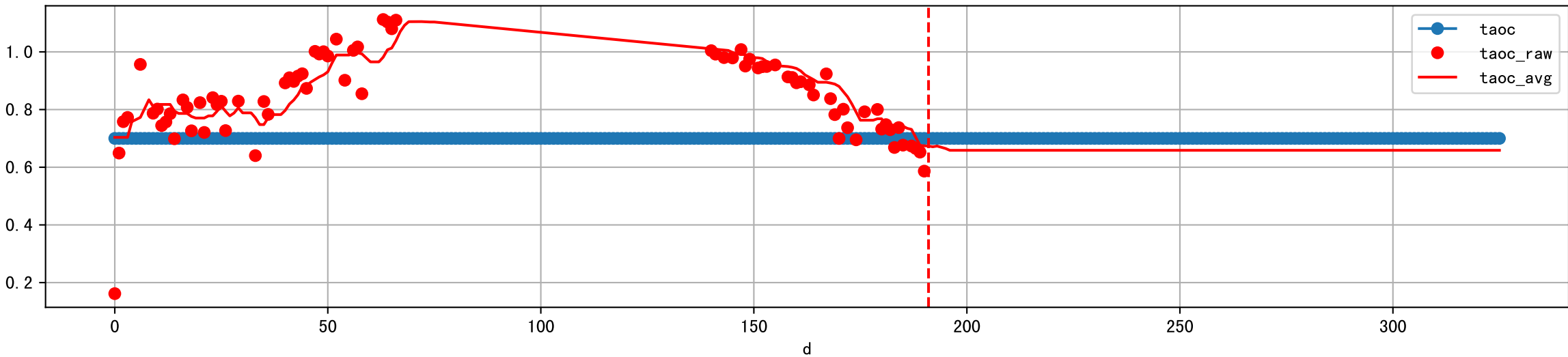


Plot [['ETcBraw:o', 'ETcB']]

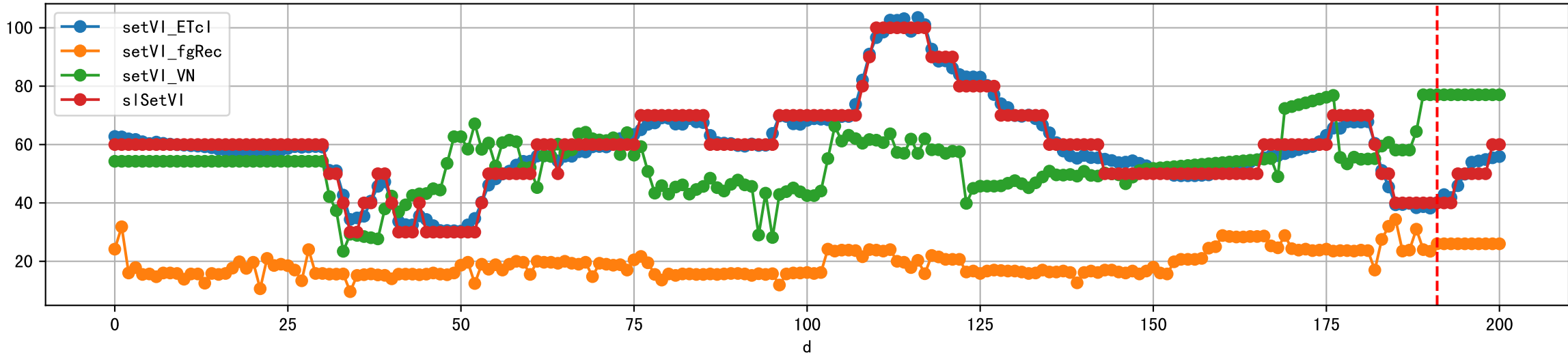




Plot [['taoc', 'taoc\_raw:ro', 'taoc\_avg:r-']]

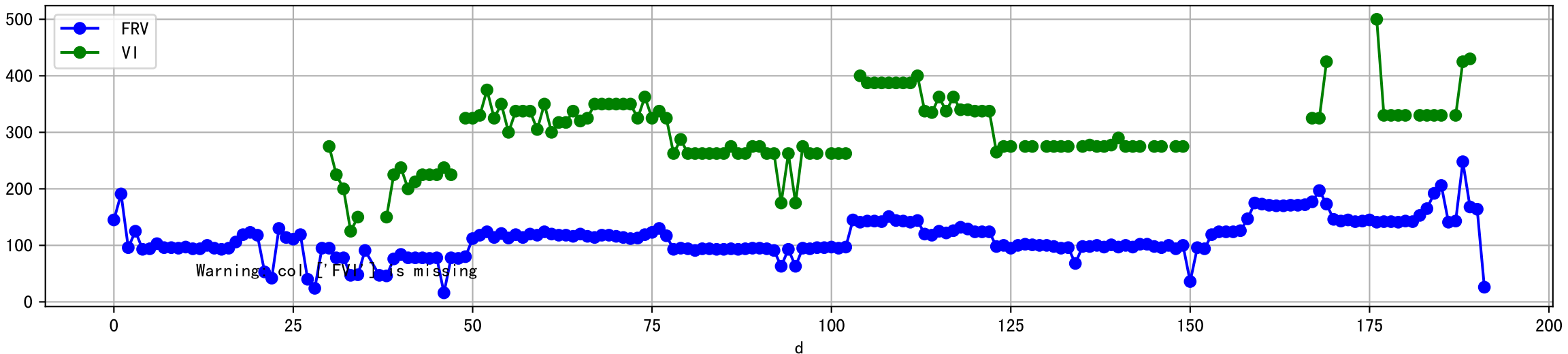


Plot [['setVI\_ETcI', 'setVI\_fgRec', 'setVI\_VN', 'sISetVI']]

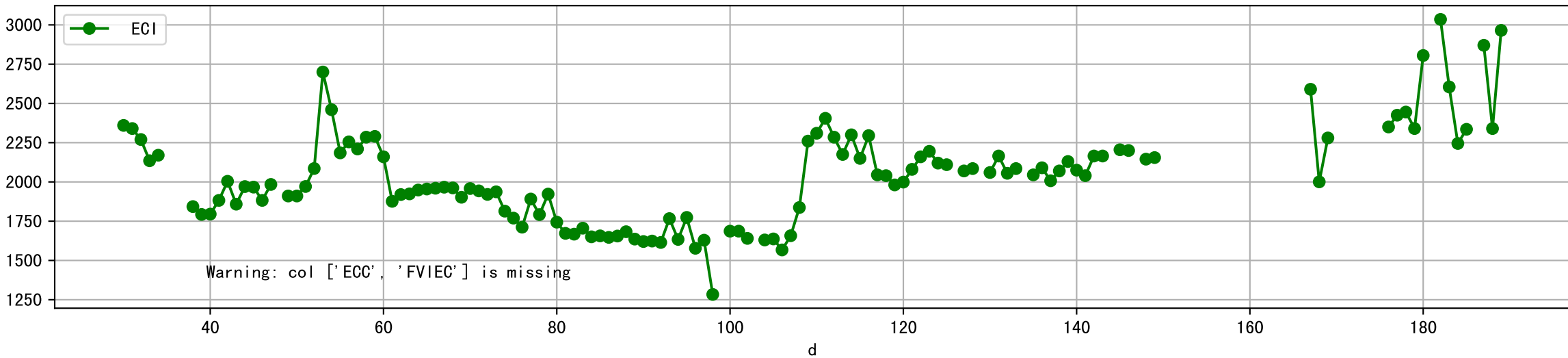




Plot [['FRV:b-o', 'FVI:r-o', 'VI:g-o']]

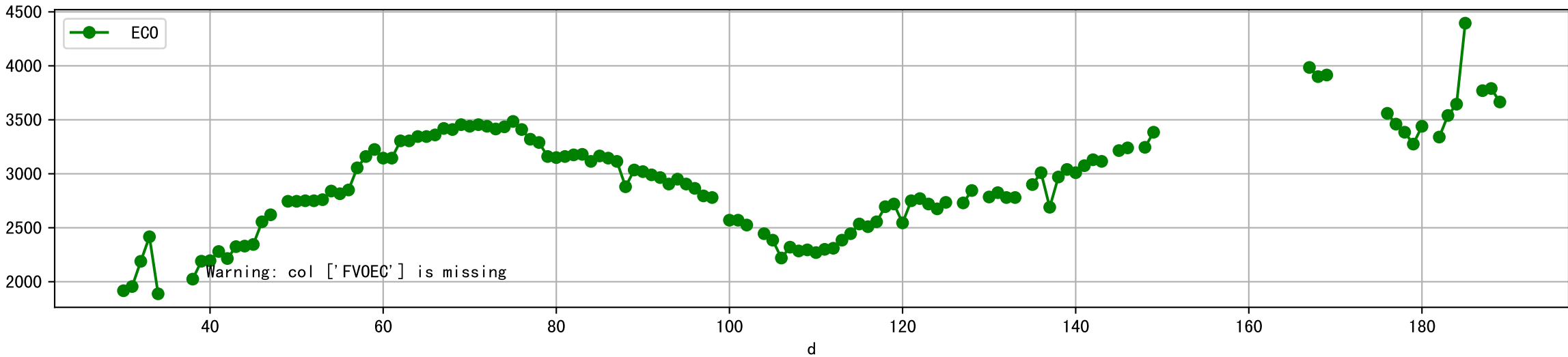


Plot [['ECC:b-o', 'FVIEC:r-o', 'ECI:g-o']]

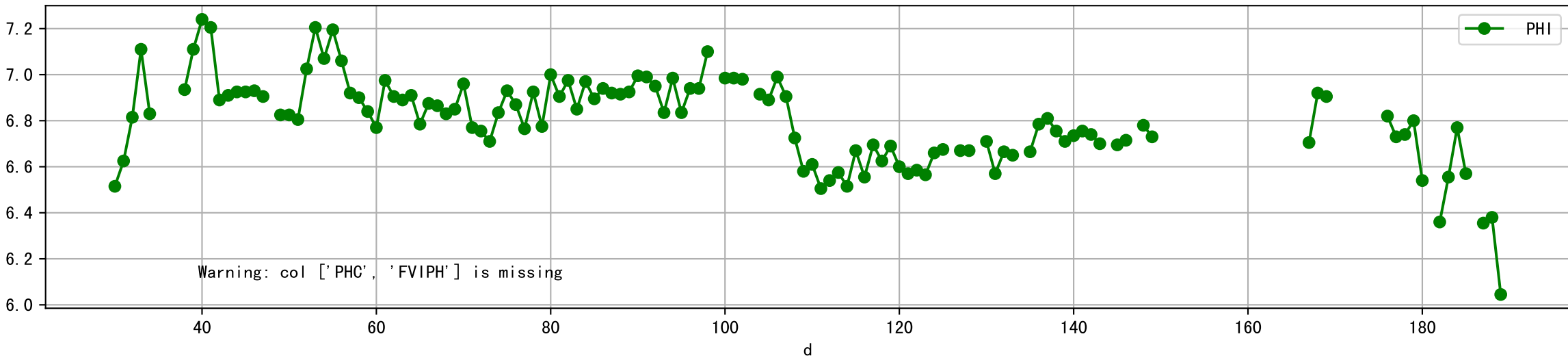


Warning: col ['ECC', 'FVIEC'] is missing

Plot [[' FVOEC:r-o' , ' ECO:g-o' ]]

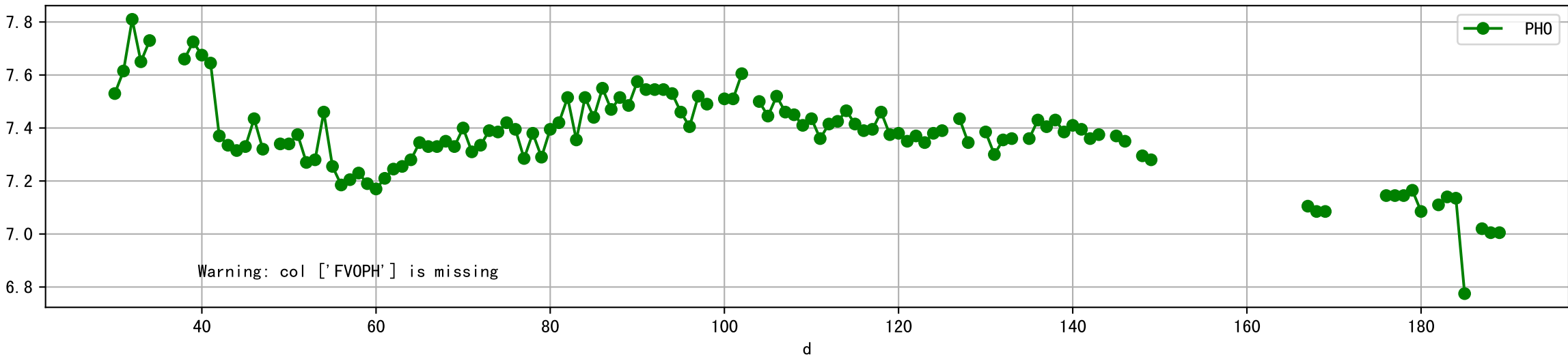


Plot [['PHC:b-o', 'FVIPH:r-o', 'PHI:g-o']]

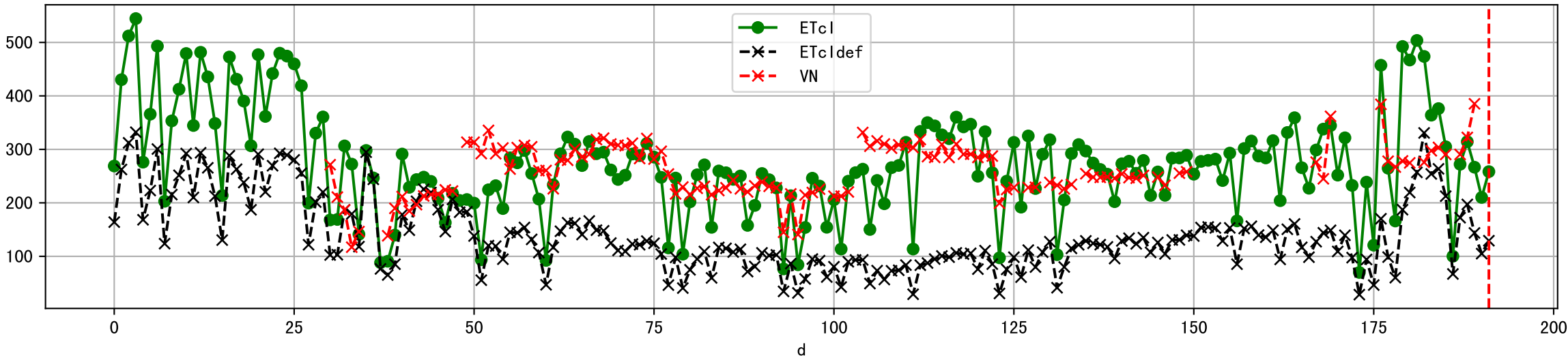


Warning: col ['PHC', 'FVIPH'] is missing

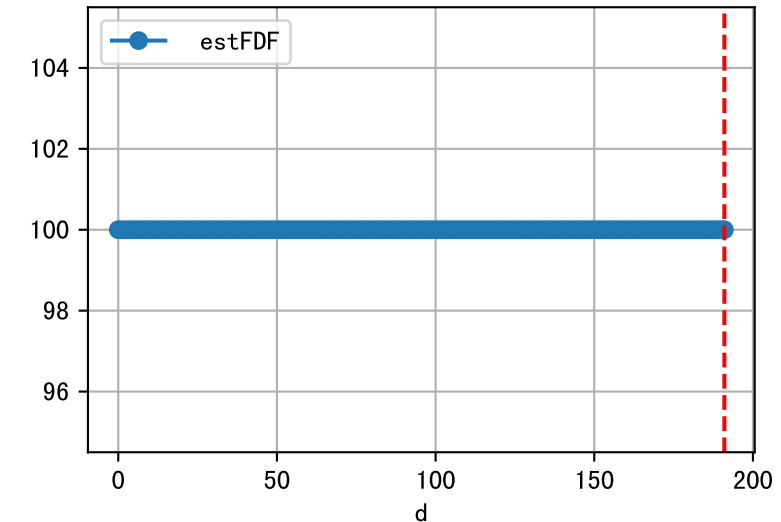
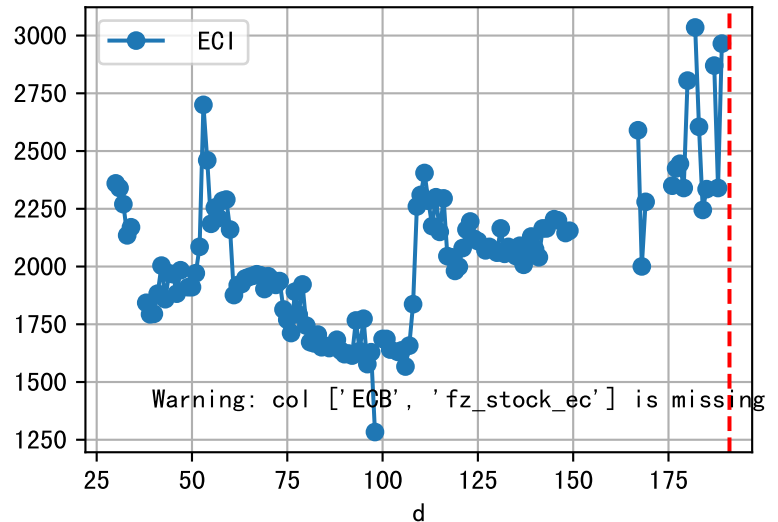
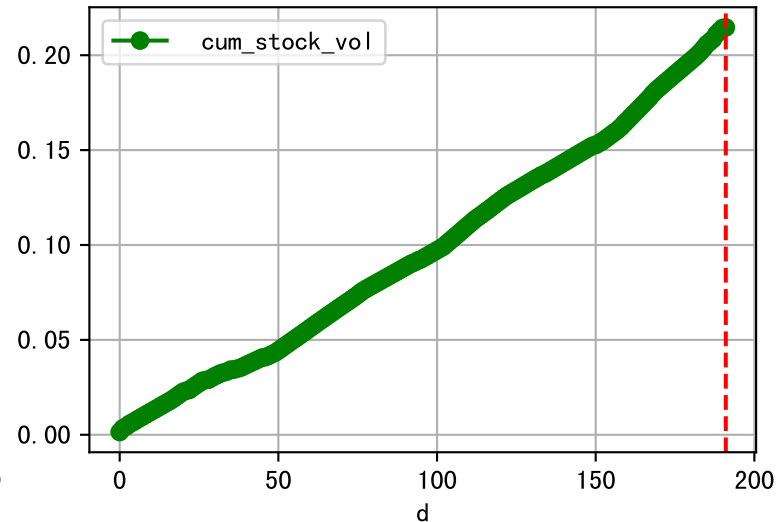
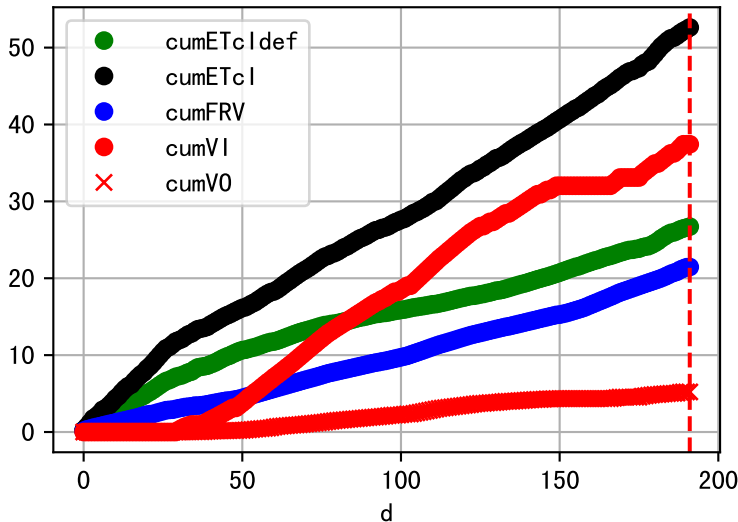
Plot [[' FVOPH:r-o' , ' PHO:g-o' ]]



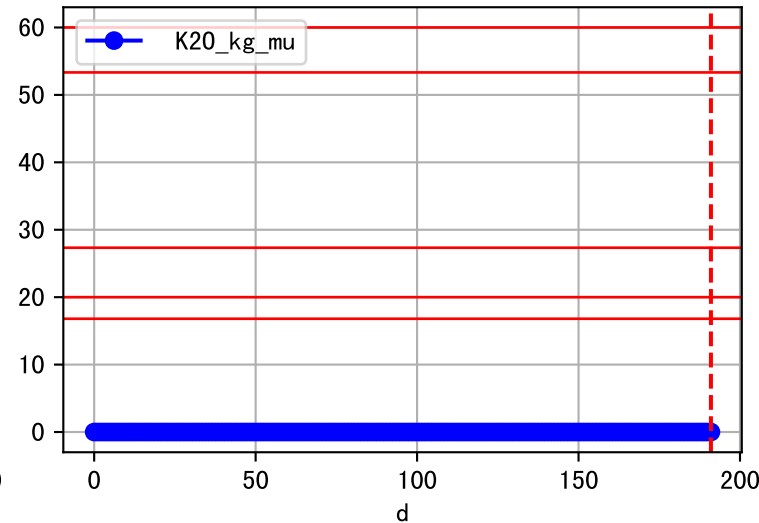
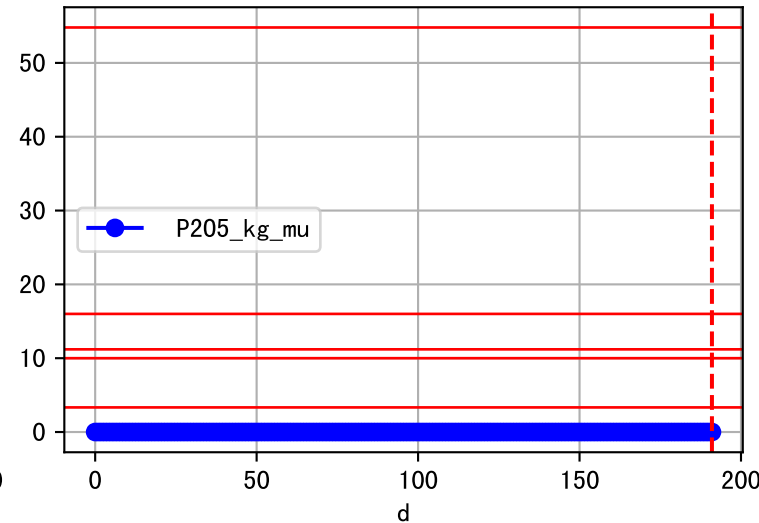
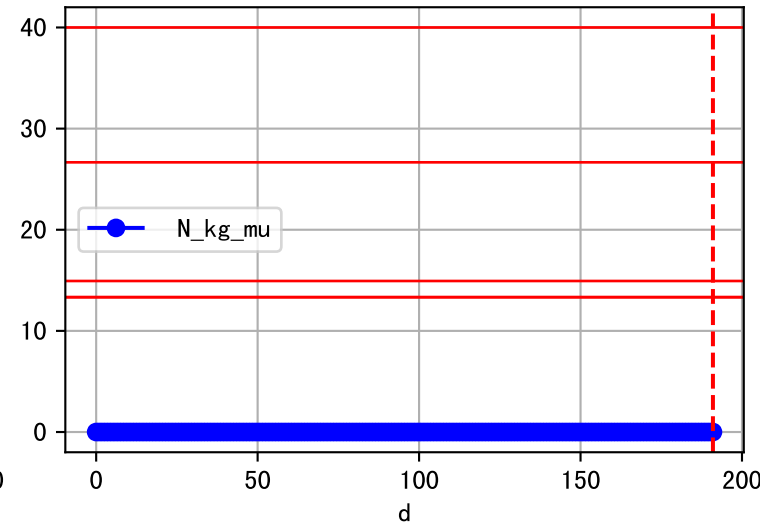
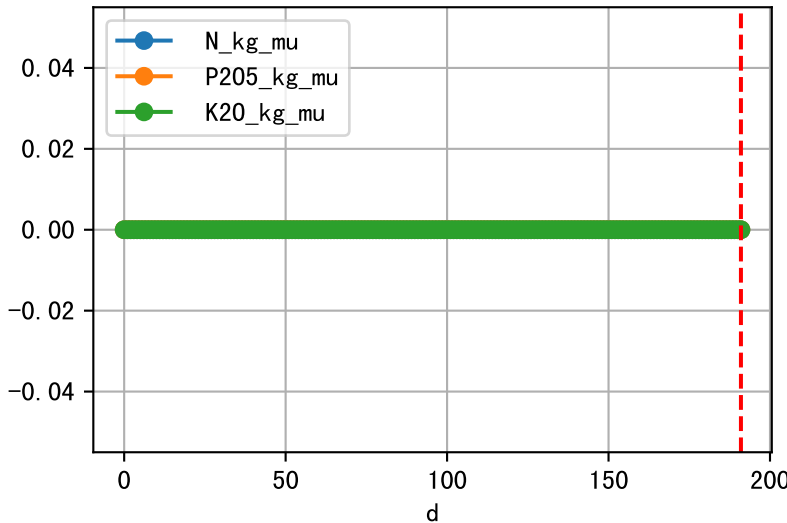
Plot ET/VN



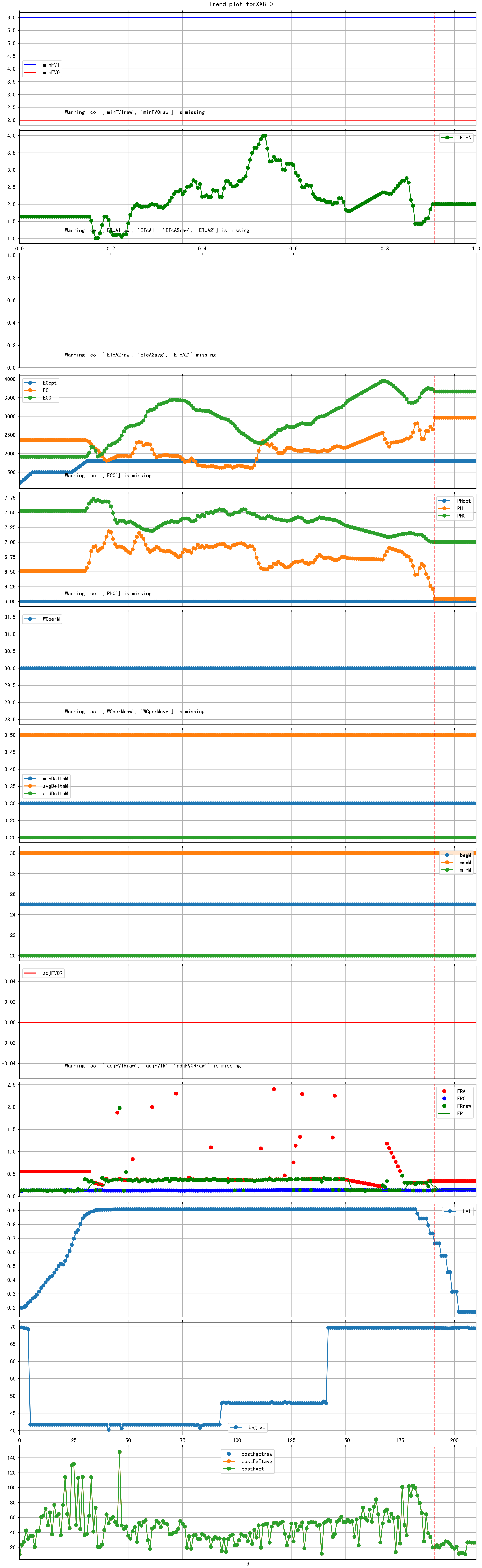
Plot Fv and fertilizer usage



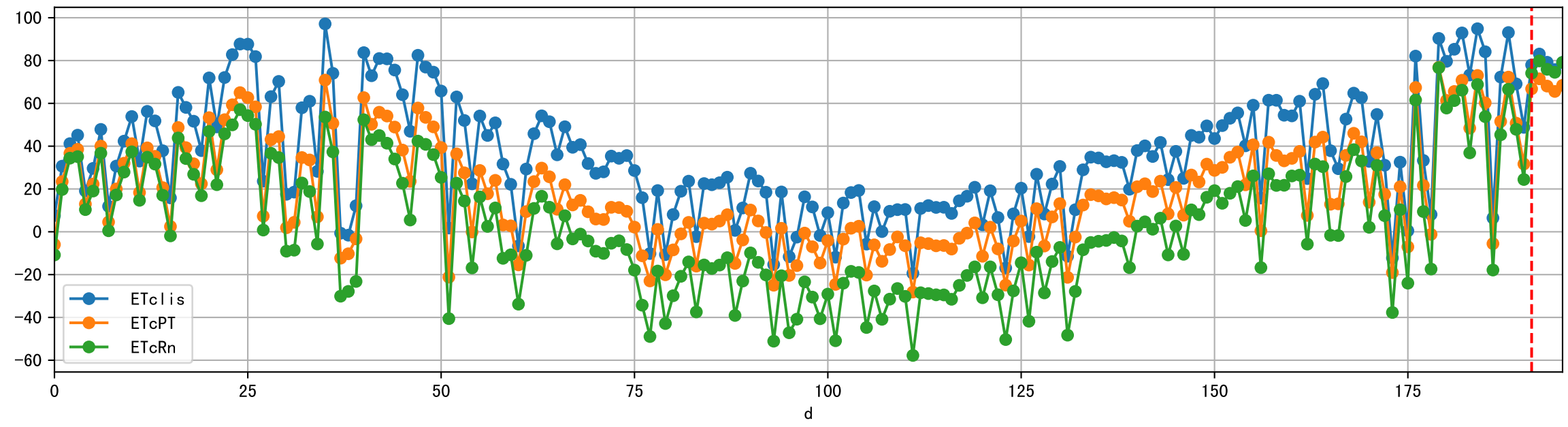
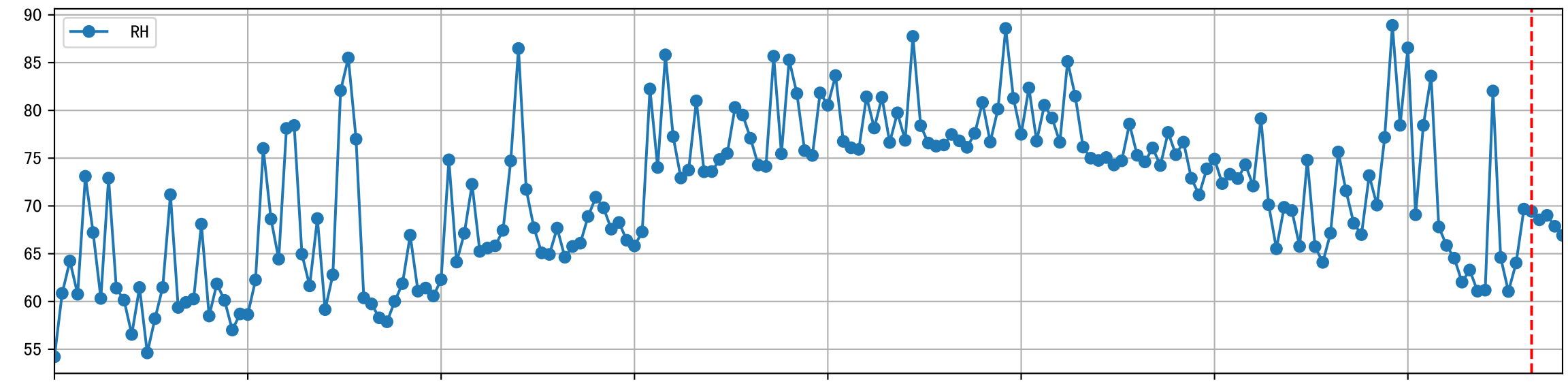
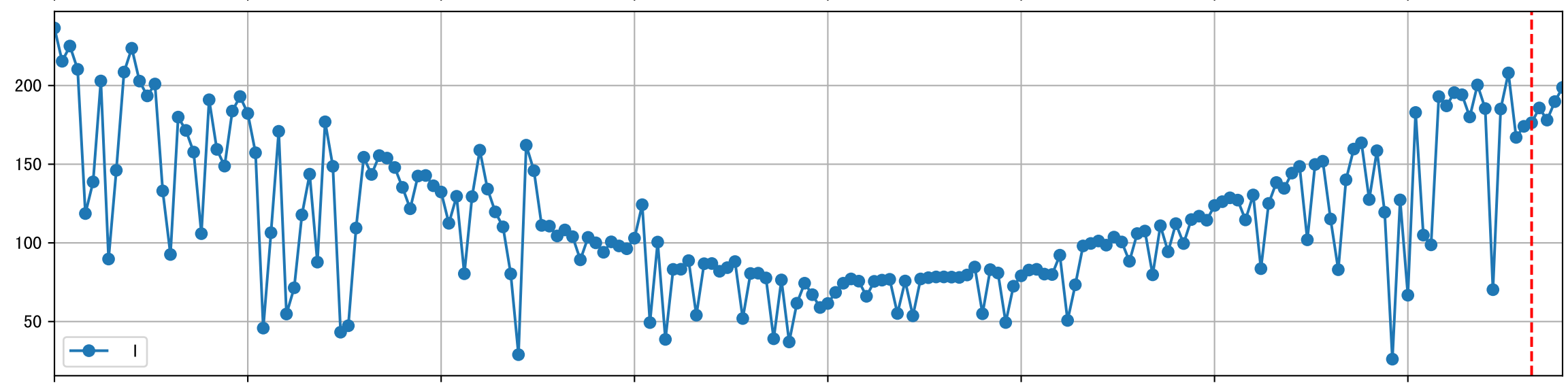
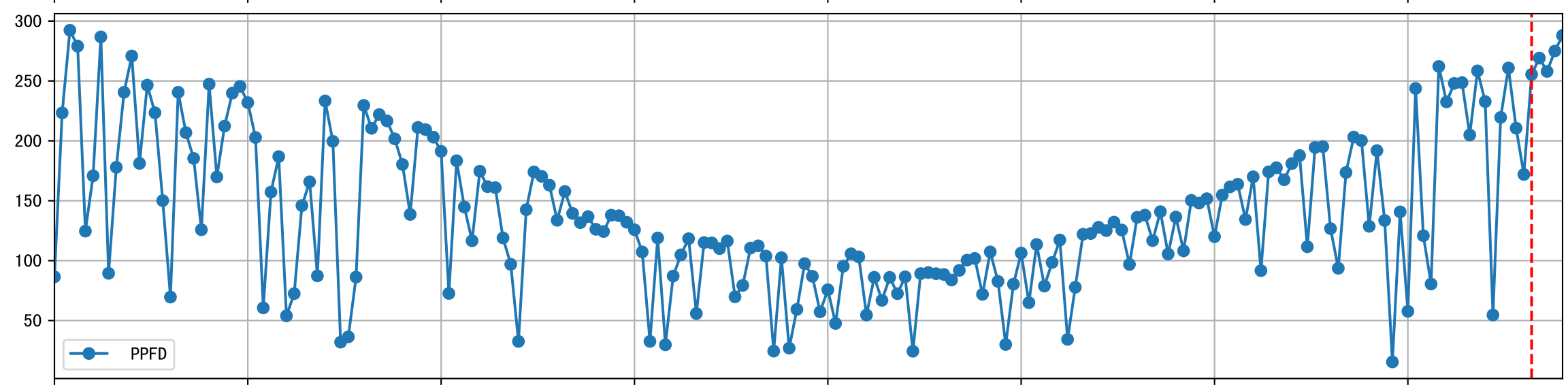
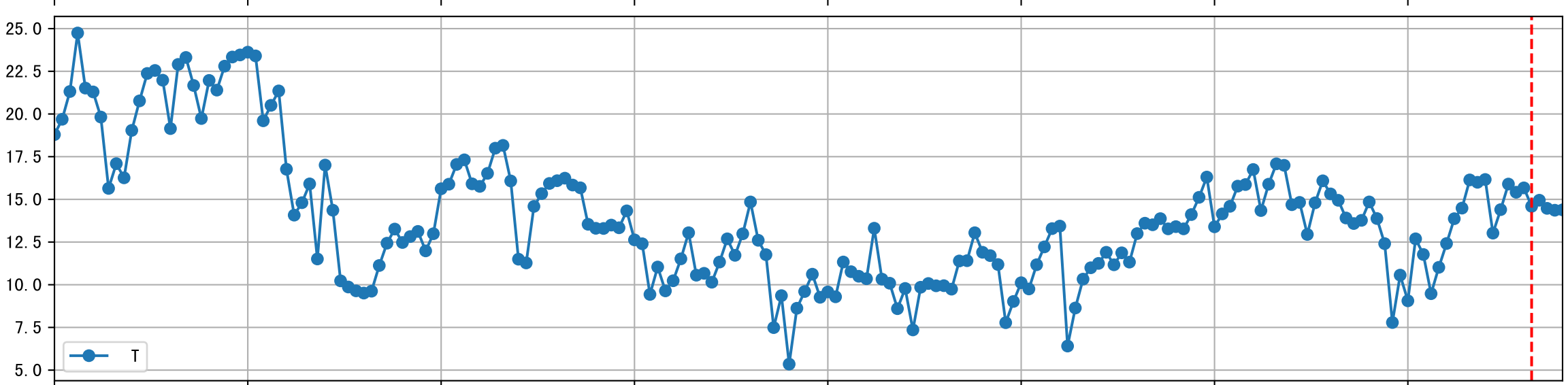
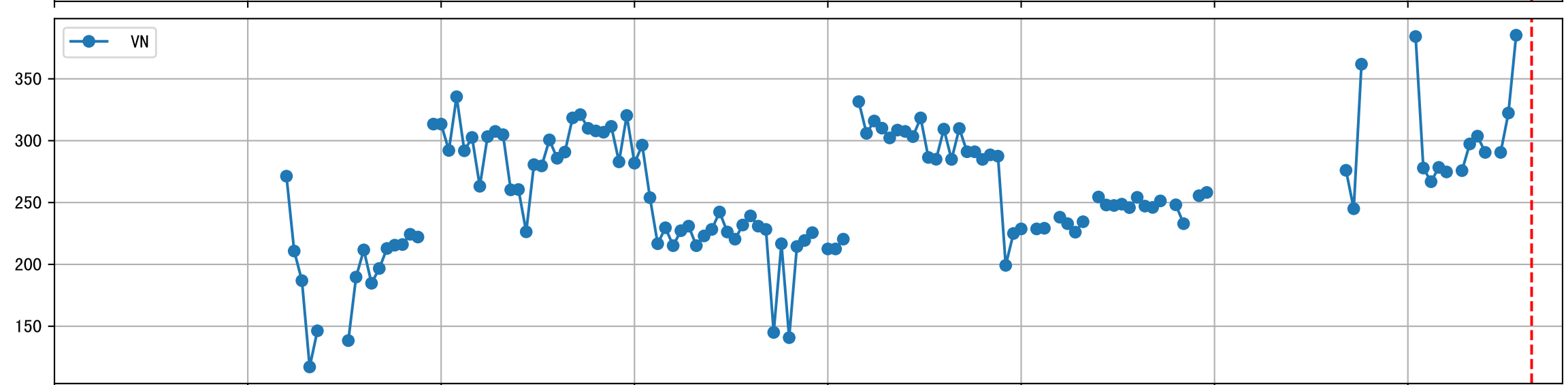
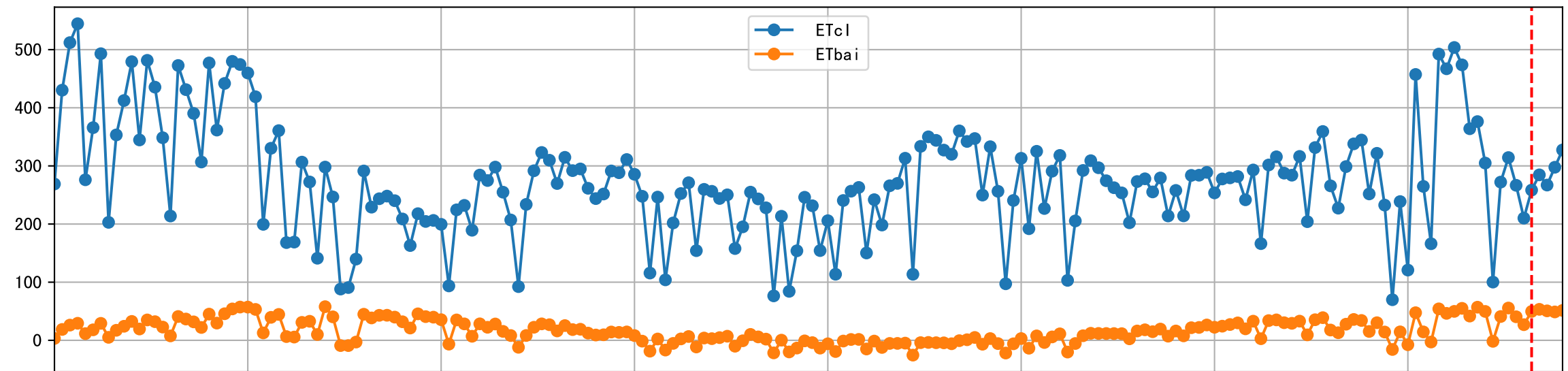
Fertilizer Range Source: kerleyL, kerleyH, UnivFL, TNAI, Haifa



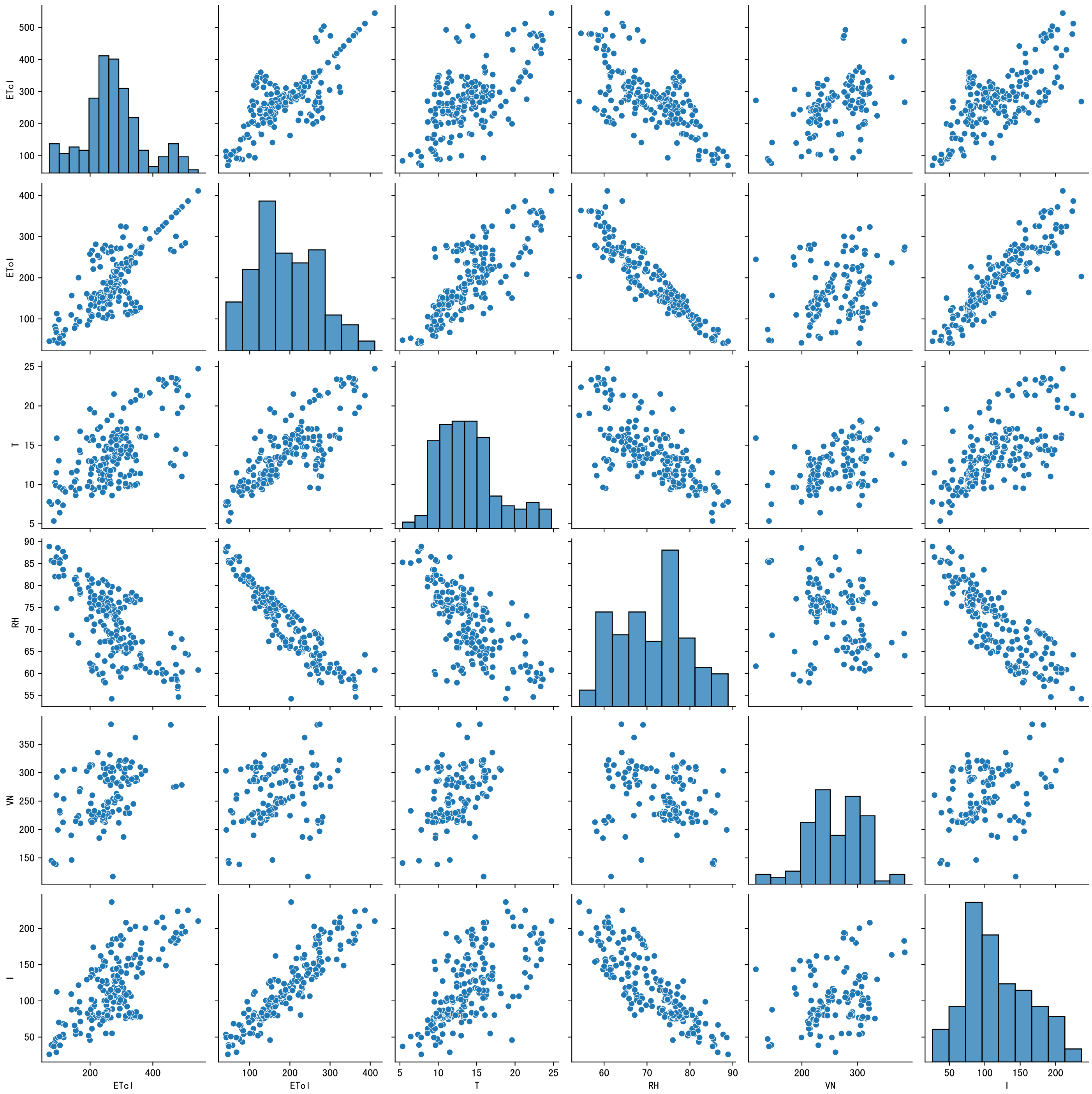
Trend plot forXX8\_0

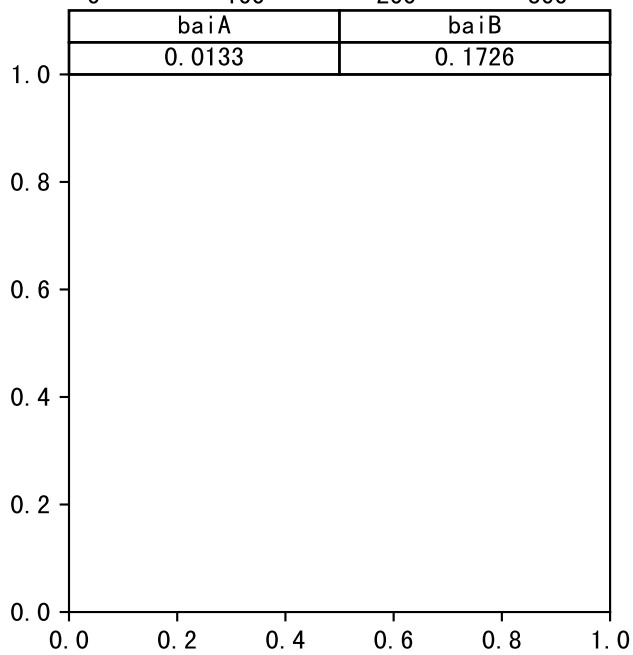
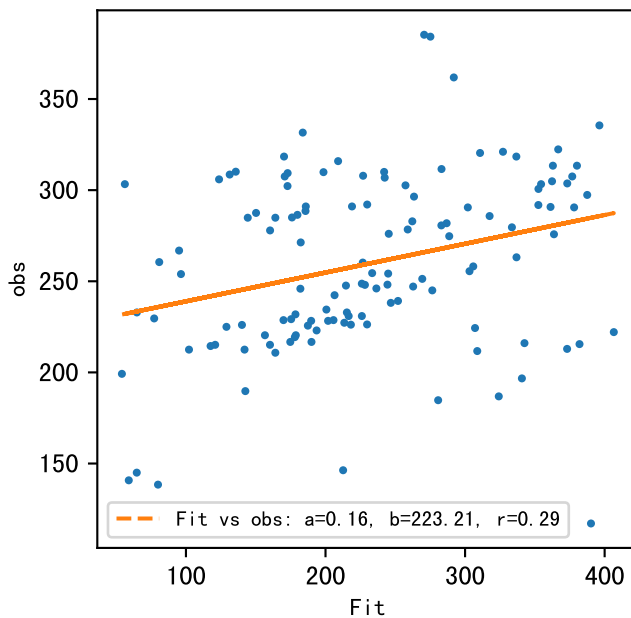
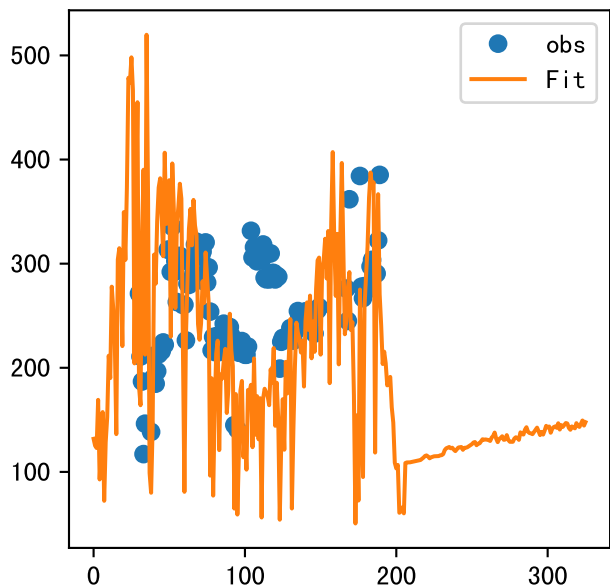


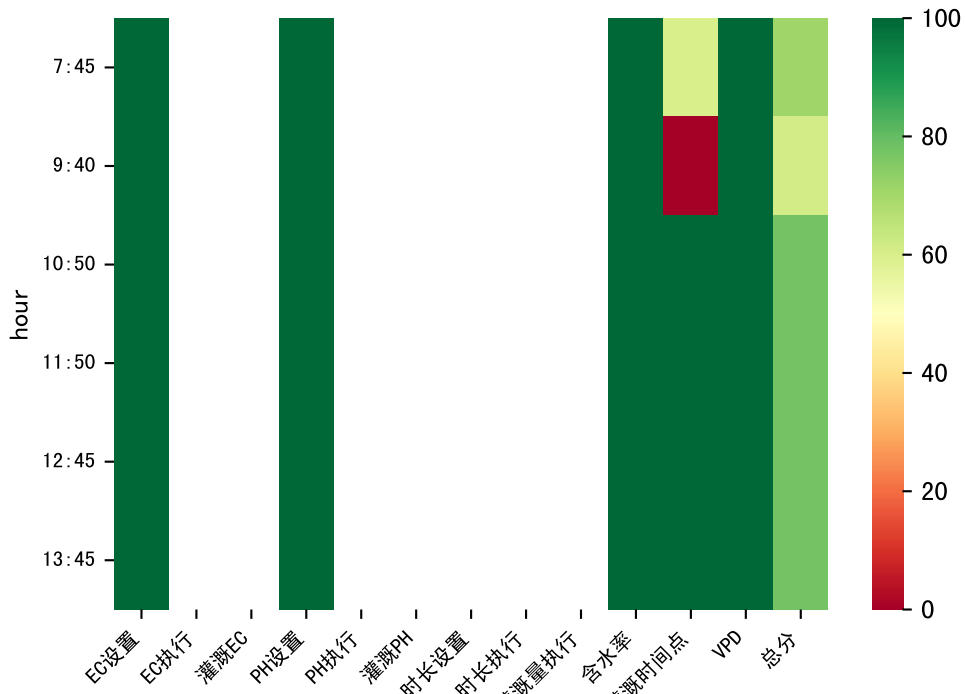






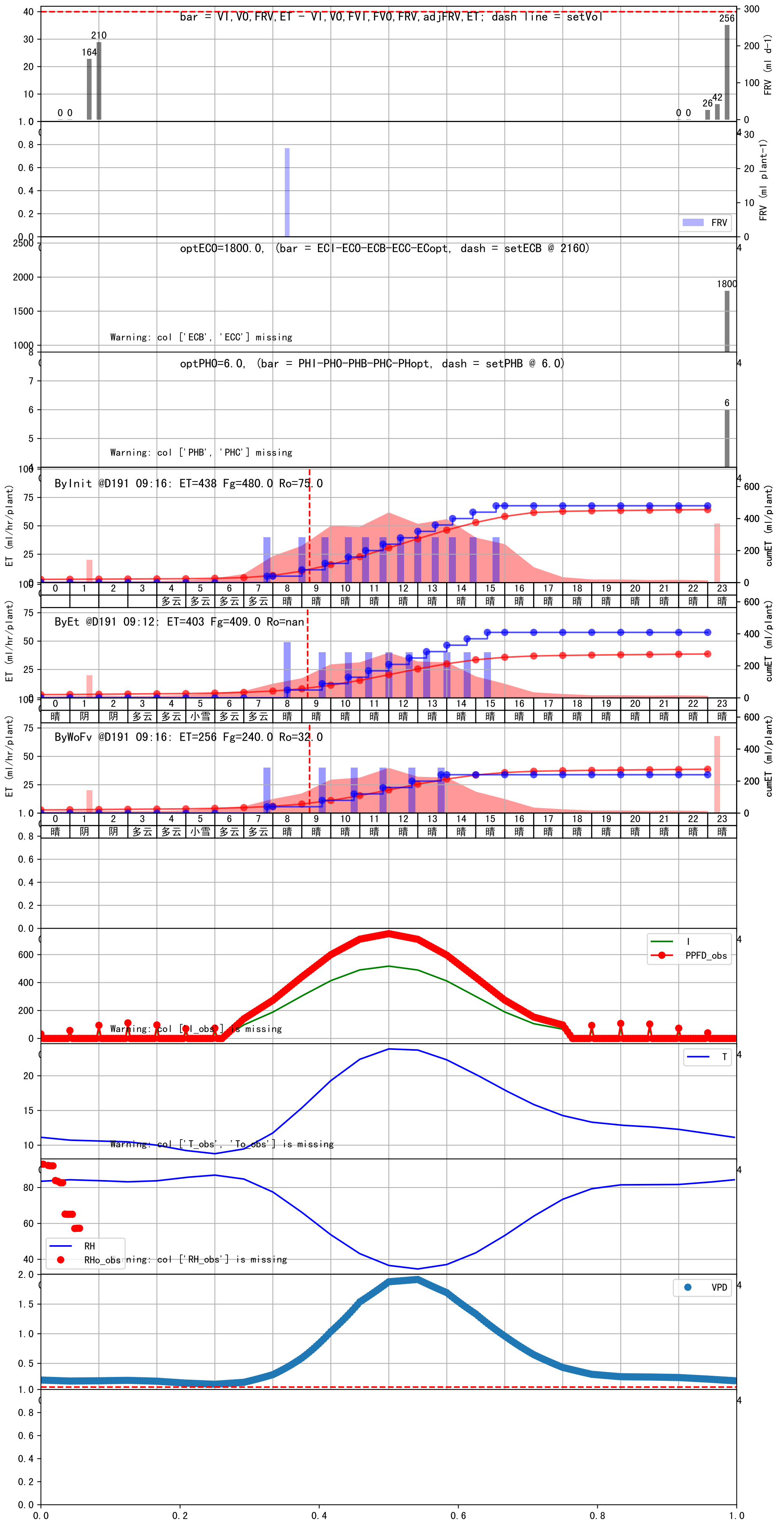






时间	灌溉时长(秒)	灌溉量(毫升/株)	灌溉总量(方/次)	天气	注释
07:45	182	40.0	0.247	多云	假设@07:45 手动 (未用传感器)
09:40	182	40.0	0.247	晴	已推荐@09:40 手动 (未用传感器)
10:50	182	40.0	0.247	晴	预期@10:50 手动 (未用传感器)
11:50	182	40.0	0.247	晴	预期@11:50 手动 (未用传感器)
12:45	182	40.0	0.247	晴	预期@12:45 手动 (未用传感器)
13:45	182	40.0	0.247	晴	预期@13:45 手动 (未用传感器)
总计	1092.0 (6次)	240.0			建议进液EC: 2160, PH: 6.0

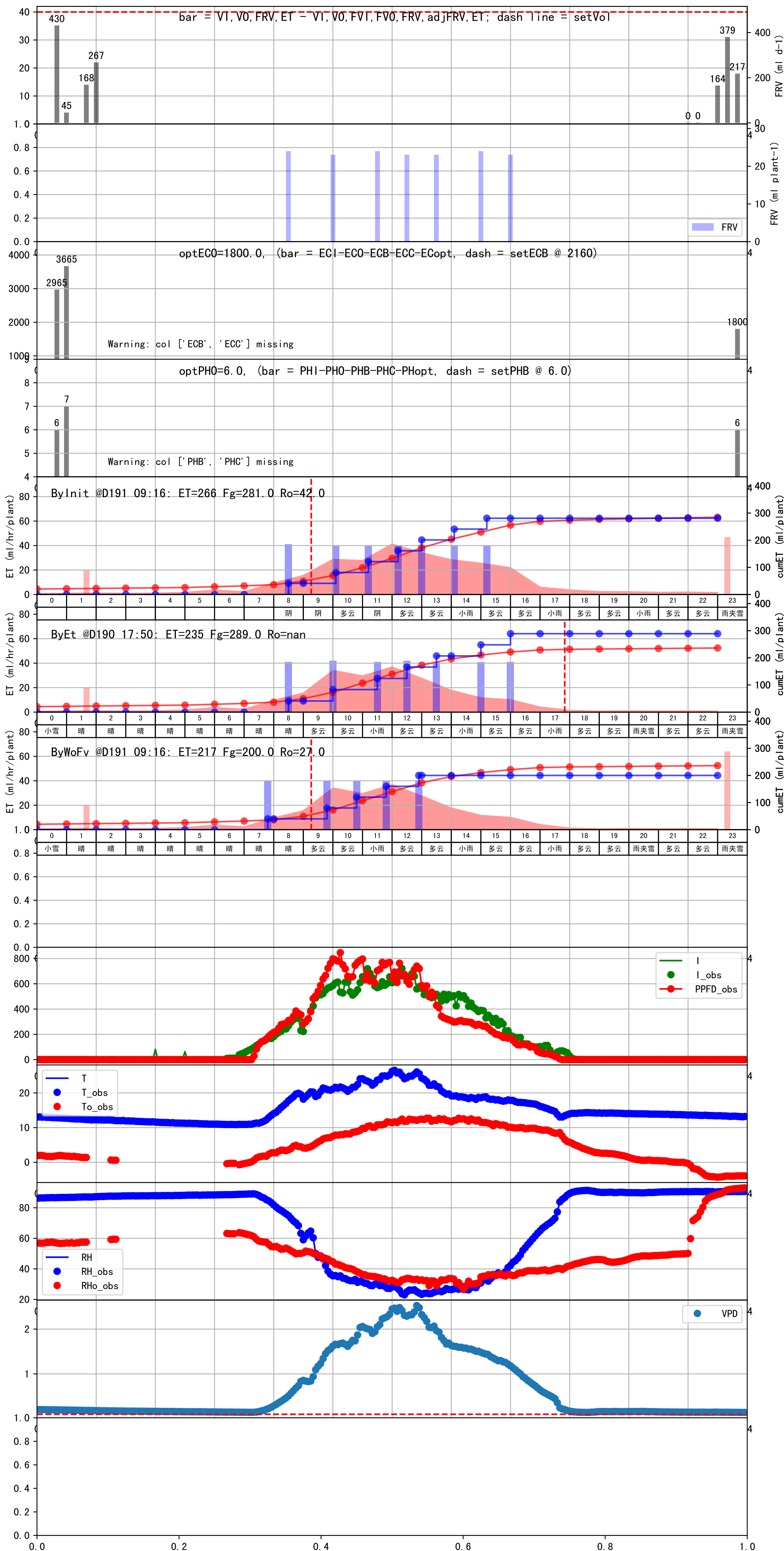
滴头平均流速偏小 (0.13 vs def 0.5), 请检查  
 施肥机灌溉量与预期值不符 (26.0 : 42.0), 可能水表需要校准  
 默认实际灌溉42.0 ml.





时间	灌溉时长(秒)	灌溉量(毫升/株)	灌溉总量(方/次)	天气	注释
07:50	180	40.0	0.247	晴	假设@07:50 手动 (未用传感器)
09:50	180	40.0	0.247	多云	假设@09:50 手动 (未用传感器)
10:50	180	40.0	0.247	多云	假设@10:50 手动 (未用传感器)
11:50	180	40.0	0.247	小雨	假设@11:50 手动 (未用传感器)
12:55	180	40.0	0.247	多云	假设@12:55 手动 (未用传感器)
总计	900.0 (5次)	200.0			建议进液EC: 2160, PH: 6.0

滴头平均流速偏小 (0.13 vs def 0.5), 请检查  
 施肥机灌溉量与预期值不符 (23.0 : 54.0), 可能水表需要校准  
 上次灌溉时长未按模型建议 (180 vs 133.0)  
 默认实际灌溉54.0 ml.





时间	灌溉时长(秒)	灌溉量(毫升/株)	灌溉总量(方/次)	天气	注释
07:50	180	40.0	0.247	晴	假设@07:50 手动 (未用传感器)
09:25	180	40.0	0.247	晴	假设@09:25 手动 (未用传感器)
10:30	180	40.0	0.247	晴	假设@10:30 手动 (未用传感器)
11:25	180	40.0	0.247	晴	假设@11:25 手动 (未用传感器)
12:15	180	40.0	0.247	晴	假设@12:15 手动 (未用传感器)
13:05	180	40.0	0.247	晴	假设@13:05 手动 (未用传感器)
14:45	180	40.0	0.247	晴	假设@14:45 手动 (未用传感器)
总计	1260.0 (7次)	280.0			建议进液EC: 1990, PH: 6.0

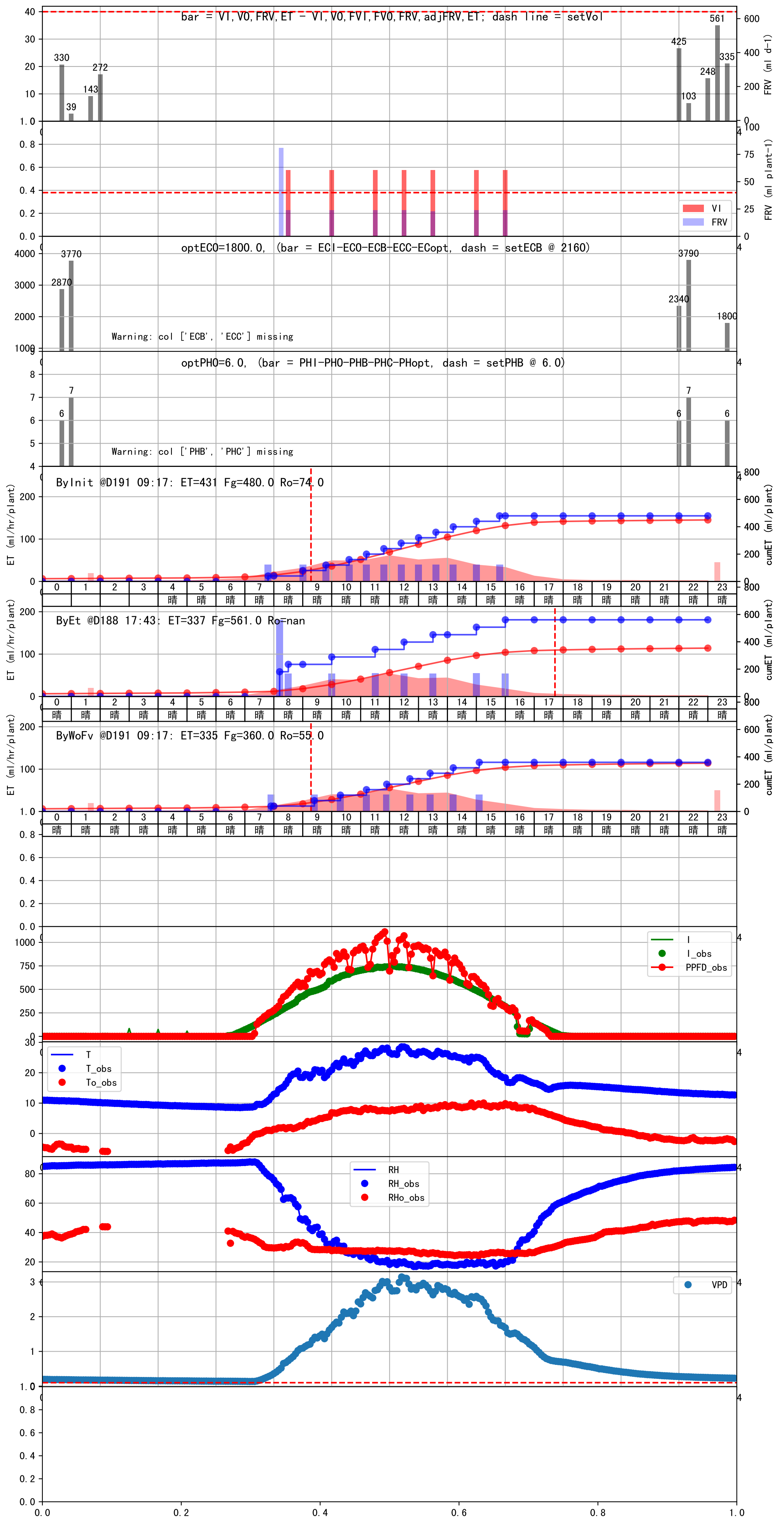
滴头平均流速偏小 (0.13 vs def 0.5), 请检查  
 施肥机灌溉量与预期值不符 (24.0 : 54.0), 可能水表需要校准  
 上次灌溉时长未按模型建议 (180 vs 133.0)  
 默认实际灌溉54.0 ml.





时间	灌溉时长(秒)	灌溉量(毫升/株)	灌溉总量(方/次)	天气	注释
07:55	603	40.0	0.247	晴	假设@07:55 手动 (未用传感器)
09:25	603	40.0	0.247	晴	假设@09:25 手动 (未用传感器)
10:20	603	40.0	0.247	晴	假设@10:20 手动 (未用传感器)
11:10	603	40.0	0.247	晴	假设@11:10 手动 (未用传感器)
11:55	603	40.0	0.247	晴	假设@11:55 手动 (未用传感器)
12:40	603	40.0	0.247	晴	假设@12:40 手动 (未用传感器)
13:25	603	40.0	0.247	晴	假设@13:25 手动 (未用传感器)
14:10	603	40.0	0.247	晴	假设@14:10 手动 (未用传感器)
15:05	603	40.0	0.247	晴	假设@15:05 手动 (未用传感器)
总计	5427.0 (9次)	360.0			建议进液EC: 2160, PH: 6.0

滴头平均流速偏小 (0.13 vs def 0.5), 请检查  
 施肥机灌溉量与预期值不符 (24.0 : 54.0), 可能水表需要校准  
 上次灌溉时长未按模型建议 (180 vs 133.0)  
 默认实际灌溉54.0 ml.





时间	灌溉时长(秒)	灌溉量(毫升/株)	灌溉总量(方/次)	天气	注释
07:55	181	40.0	0.247	多云	假设@07:55 手动 (未用传感器)
09:35	181	40.0	0.247	多云	假设@09:35 手动 (未用传感器)
10:45	181	40.0	0.247	阴	假设@10:45 手动 (未用传感器)
11:40	181	40.0	0.247	阴	假设@11:40 手动 (未用传感器)
12:35	181	40.0	0.247	阴	假设@12:35 手动 (未用传感器)
13:30	181	40.0	0.247	阴	假设@13:30 手动 (未用传感器)
14:30	181	40.0	0.247	阴	假设@14:30 手动 (未用传感器)
总计	1267.0 (7次)	280.0			建议进液EC: 2030, PH: 6.0

滴头平均流速偏小 (0.13 vs def 0.5), 请检查  
 施肥机灌溉量与预期值不符 (23.0 : 54.0), 可能水表需要校准  
 上次灌溉时长未按模型建议 (181 vs 133.0)  
 默认实际灌溉54.0 ml.

