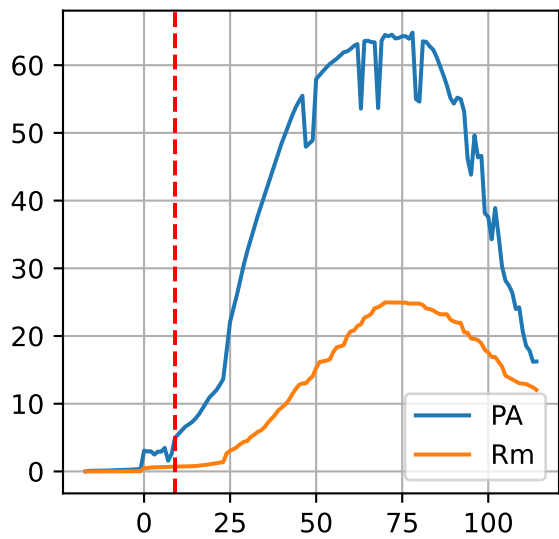
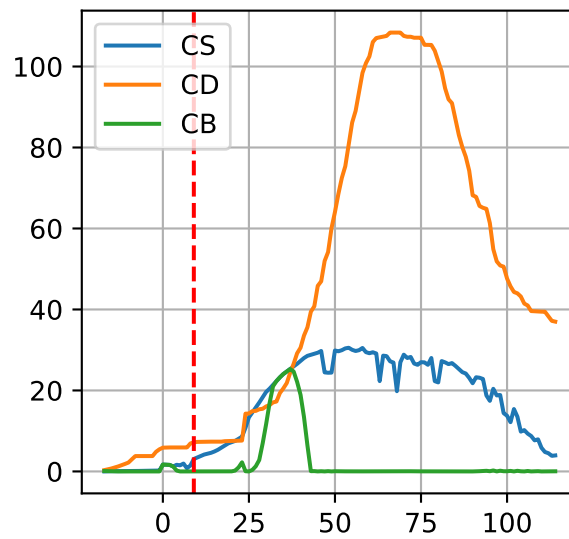


Model Prediction (M11)

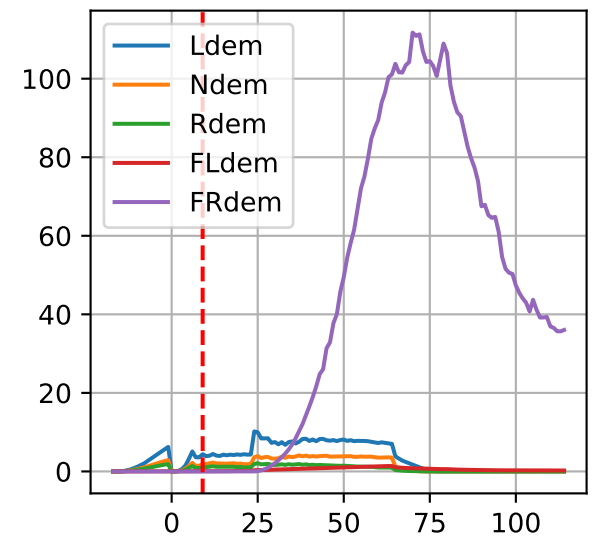
M11: ['PA', 'Rm']



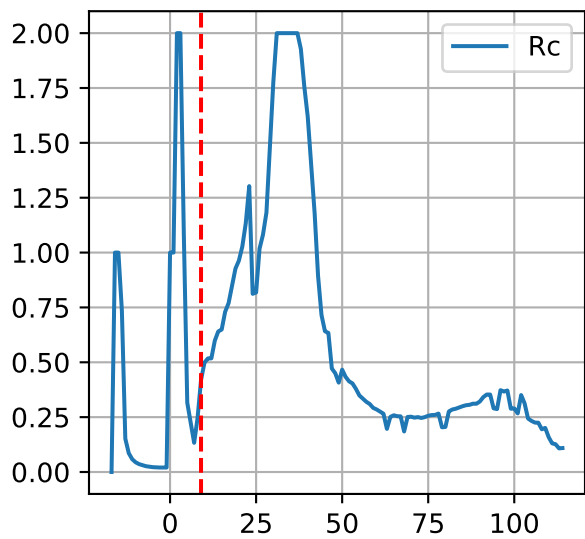
M11: ['CS', 'CD', 'CB']



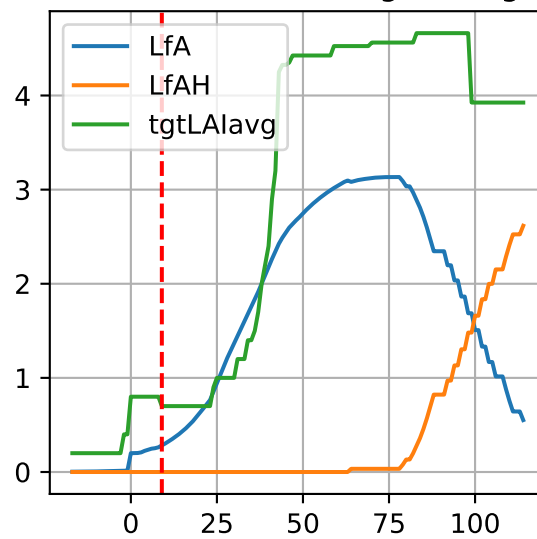
M11: ['Ldem', 'Ndem', 'Rdem', 'FLdem', 'FRdem']



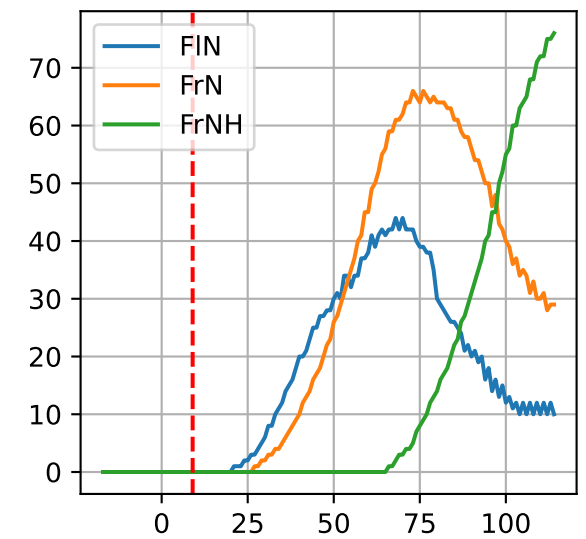
M11: ['Rc']



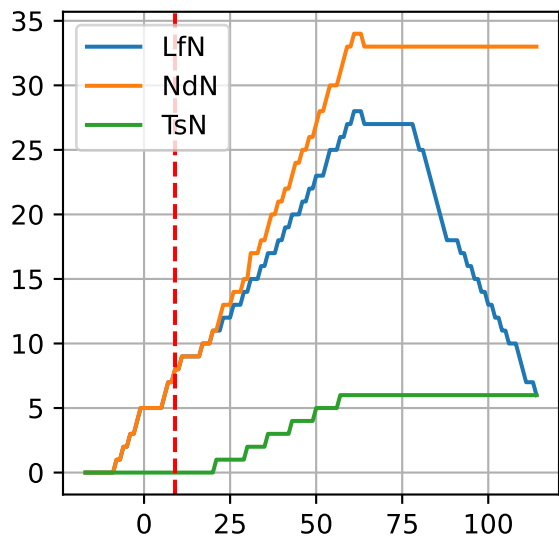
M11: ['LfA', 'LfAH', 'tgtLAlavg']



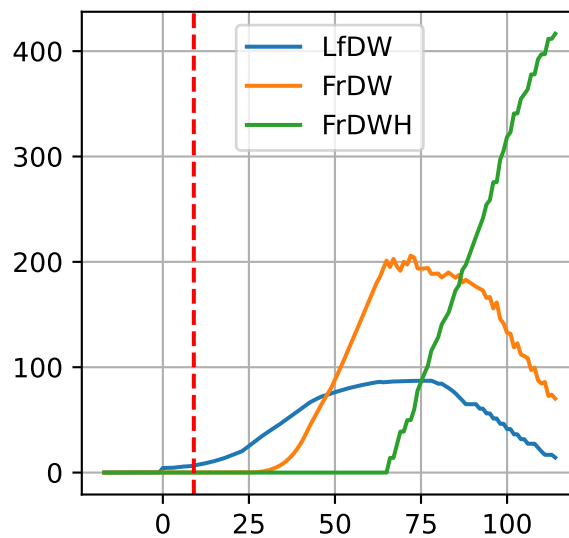
M11: ['FIN', 'FrN', 'FrNH']



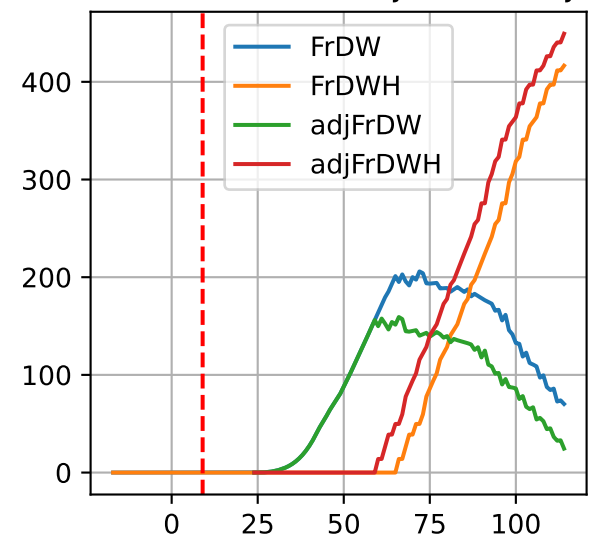
M11: ['LfN', 'NdN', 'TsN']



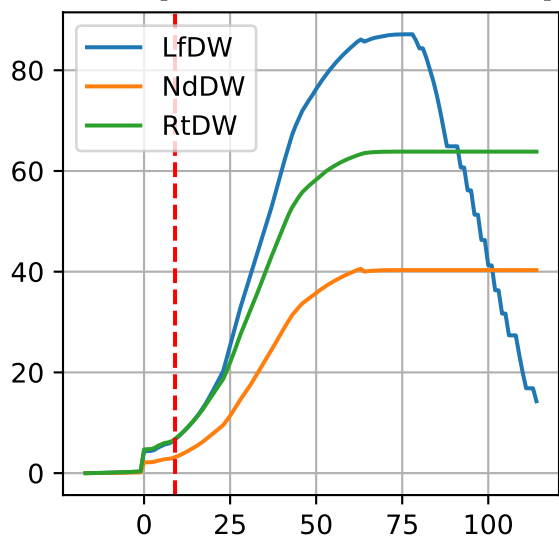
M11: ['LfDW', 'FrDW', 'FrDWH']



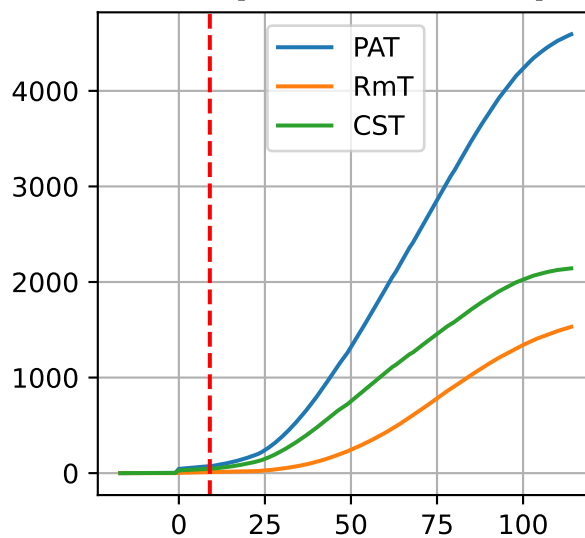
M11: ['FrDW', 'FrDWH', 'adjFrDW', 'adjFrDWH']



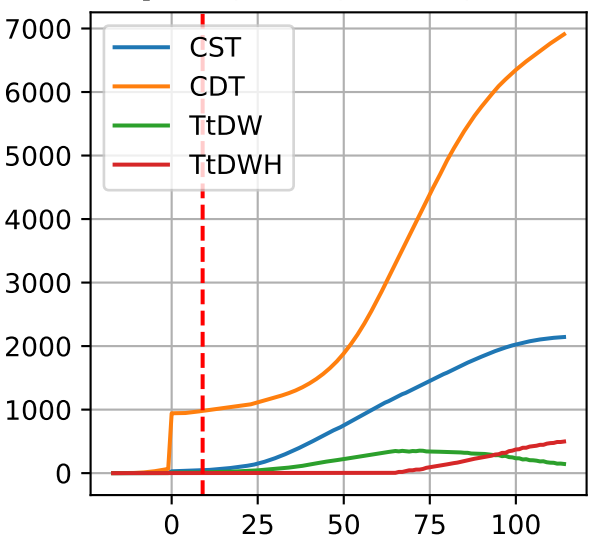
M11: ['LfDW', 'NdDW', 'RtDW']



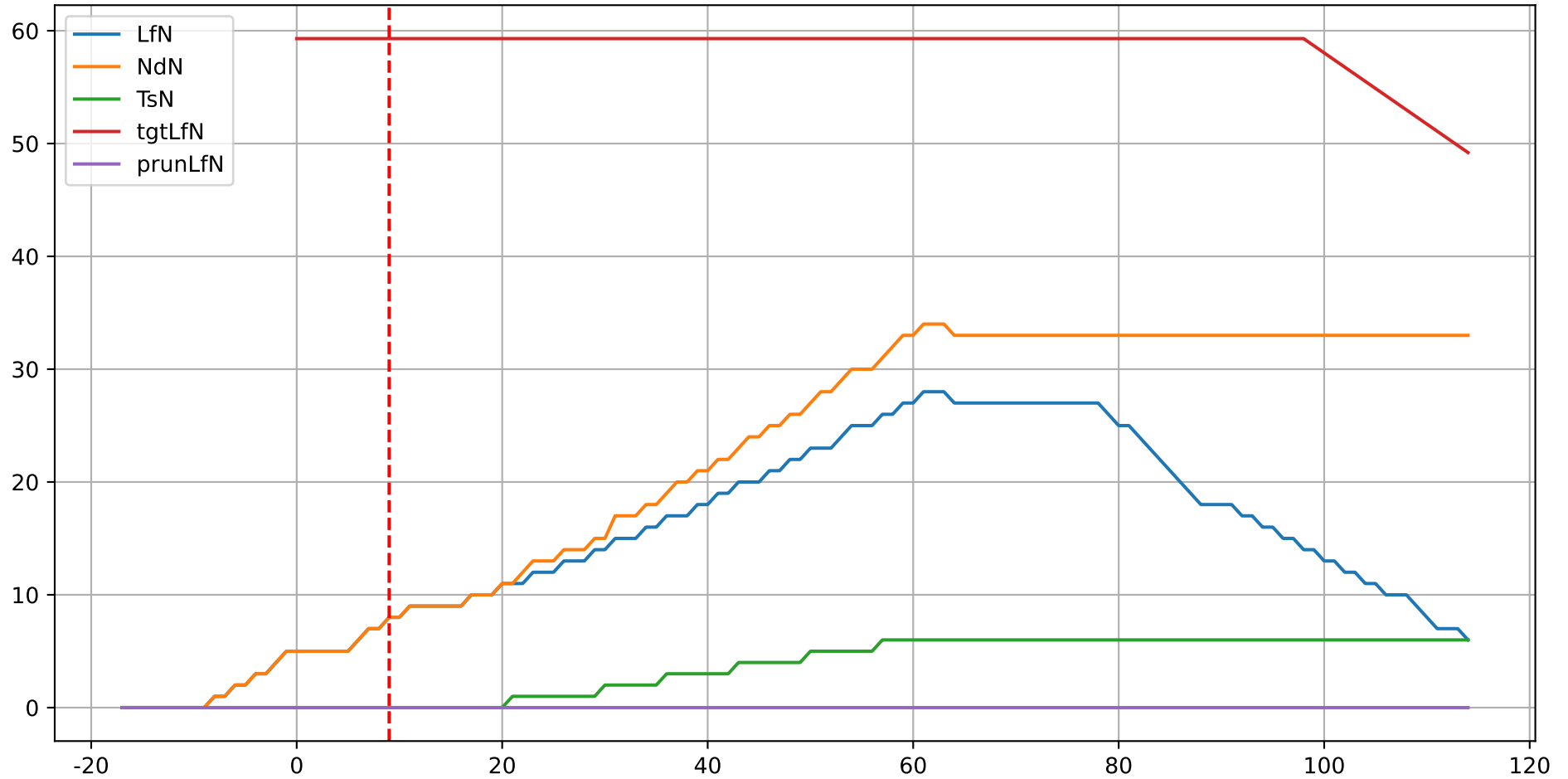
M11: ['PAT', 'RmT', 'CST']



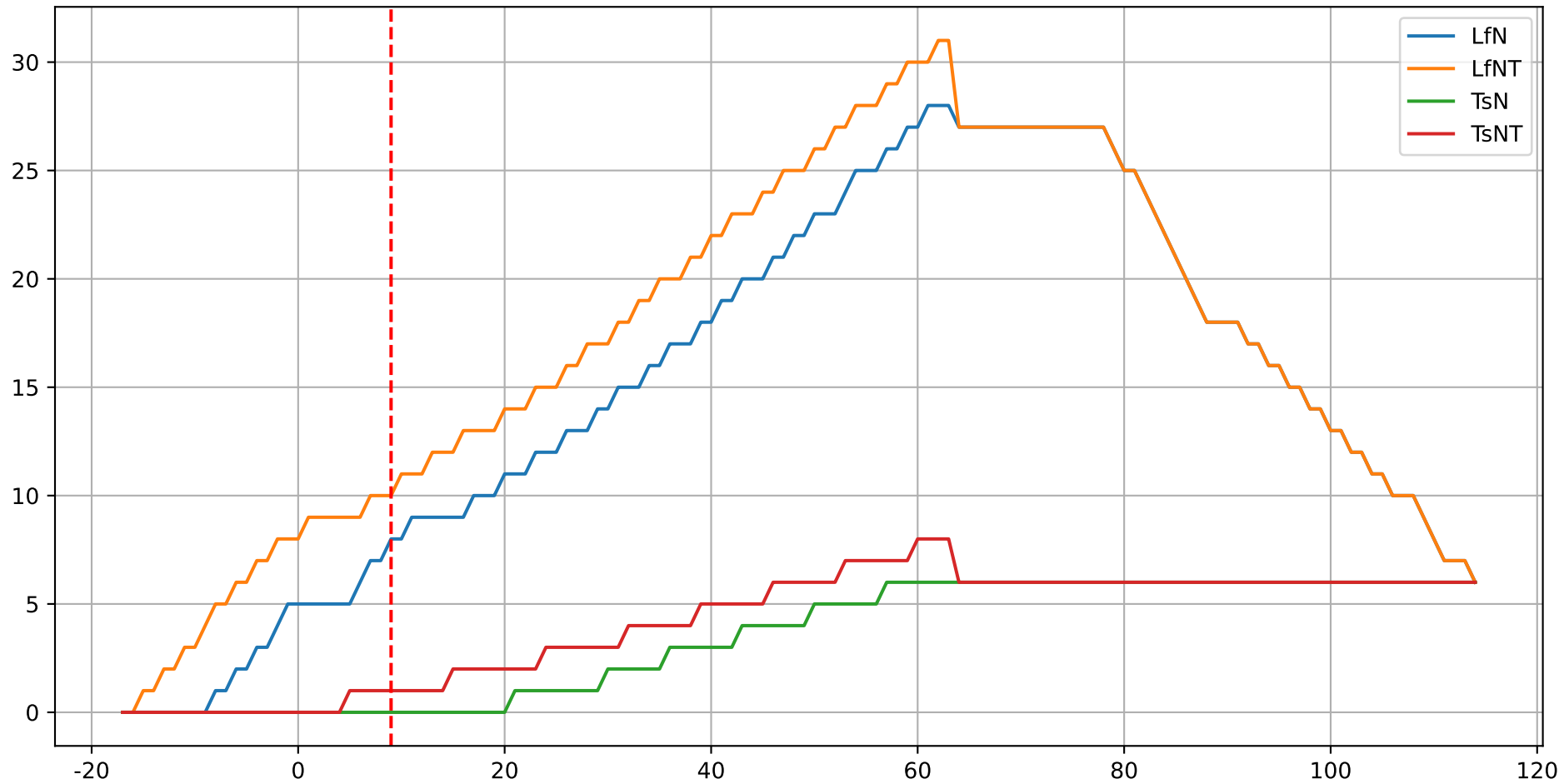
M11: ['CST', 'CDT', 'TtDW', 'TtDWH']



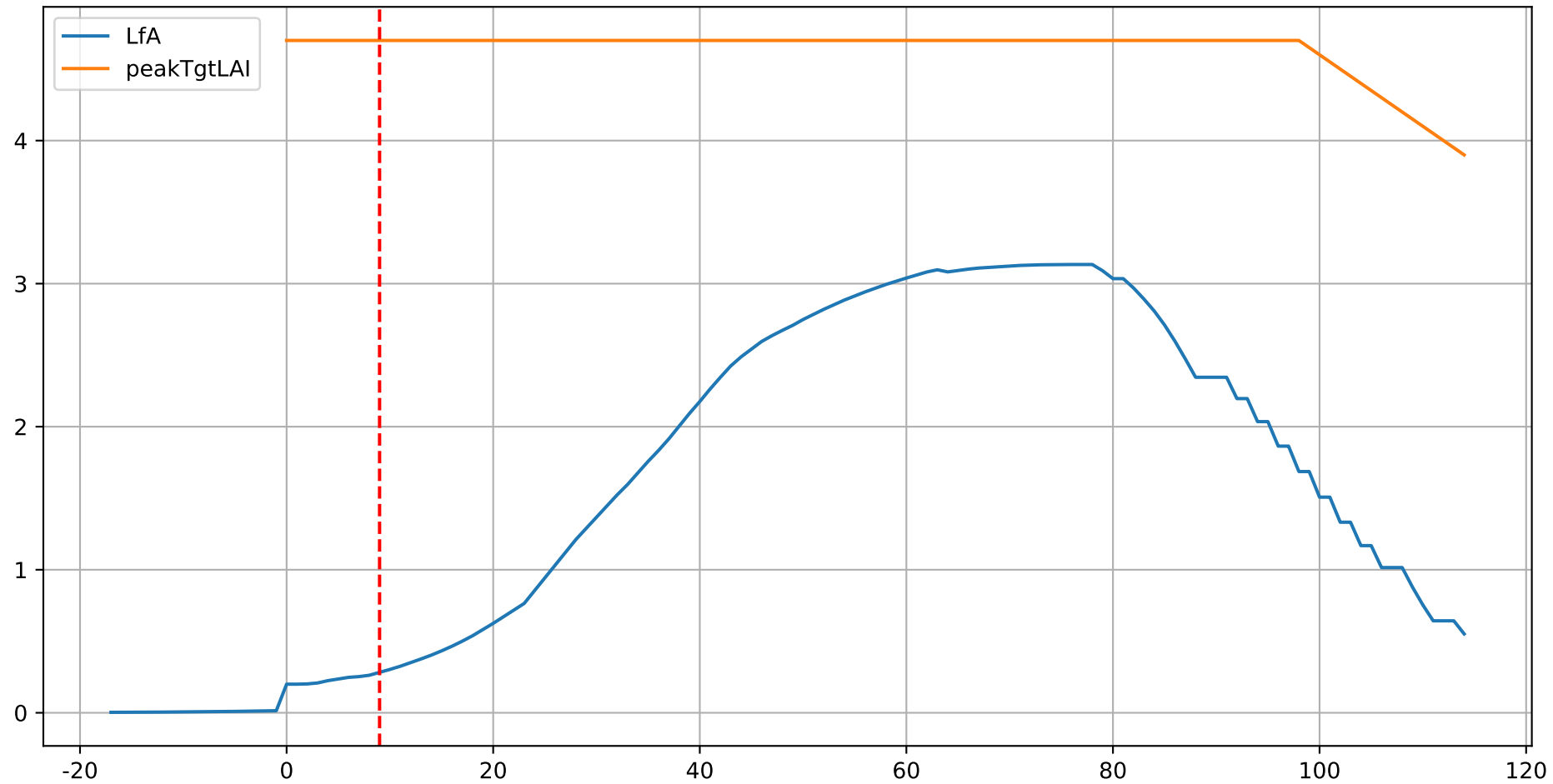
M11: ['LfN', 'NdN', 'TsN', 'tgtLfN', 'prunLfN']



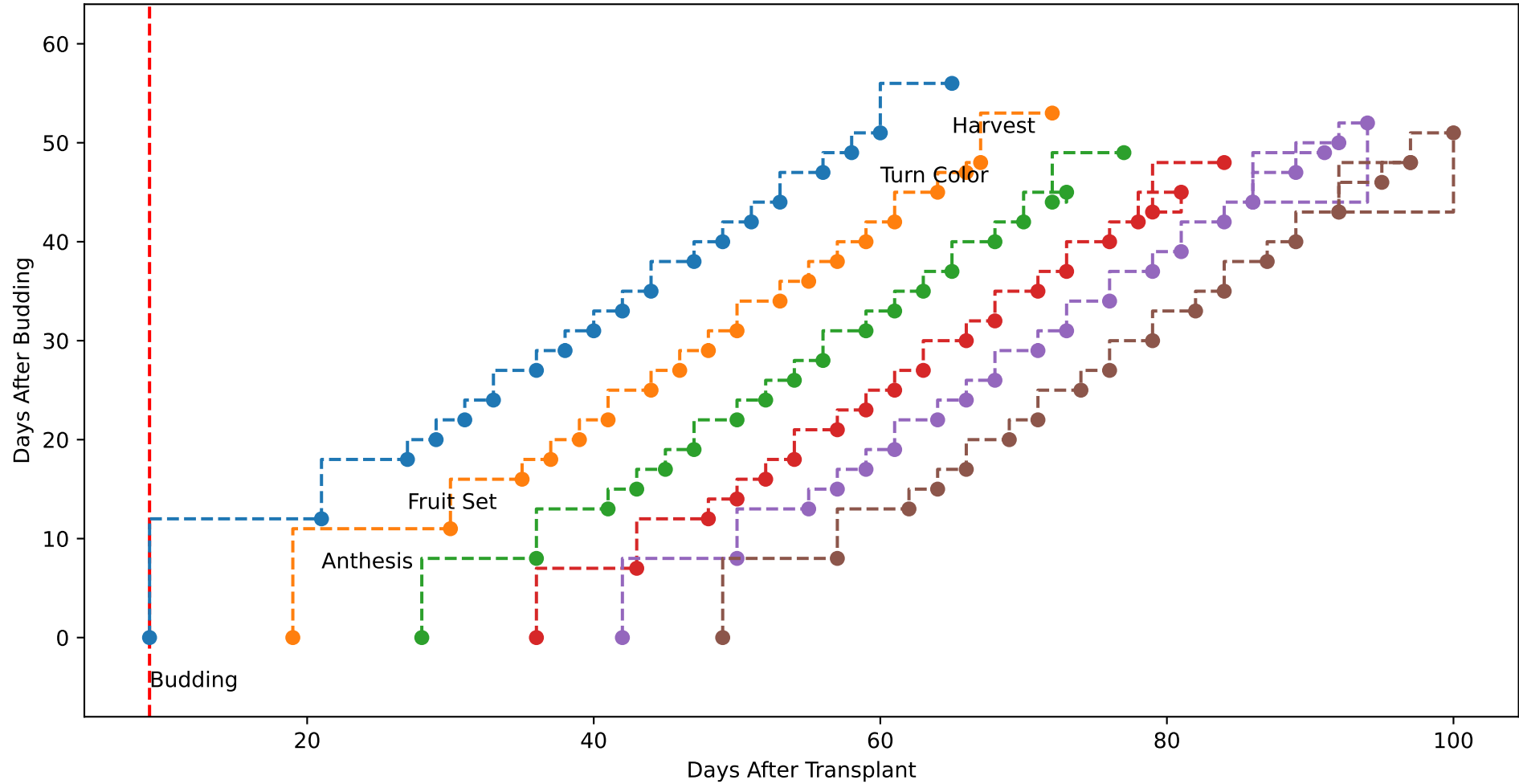
M11: ['LfN', 'LfNT', 'TsN', 'TsNT']



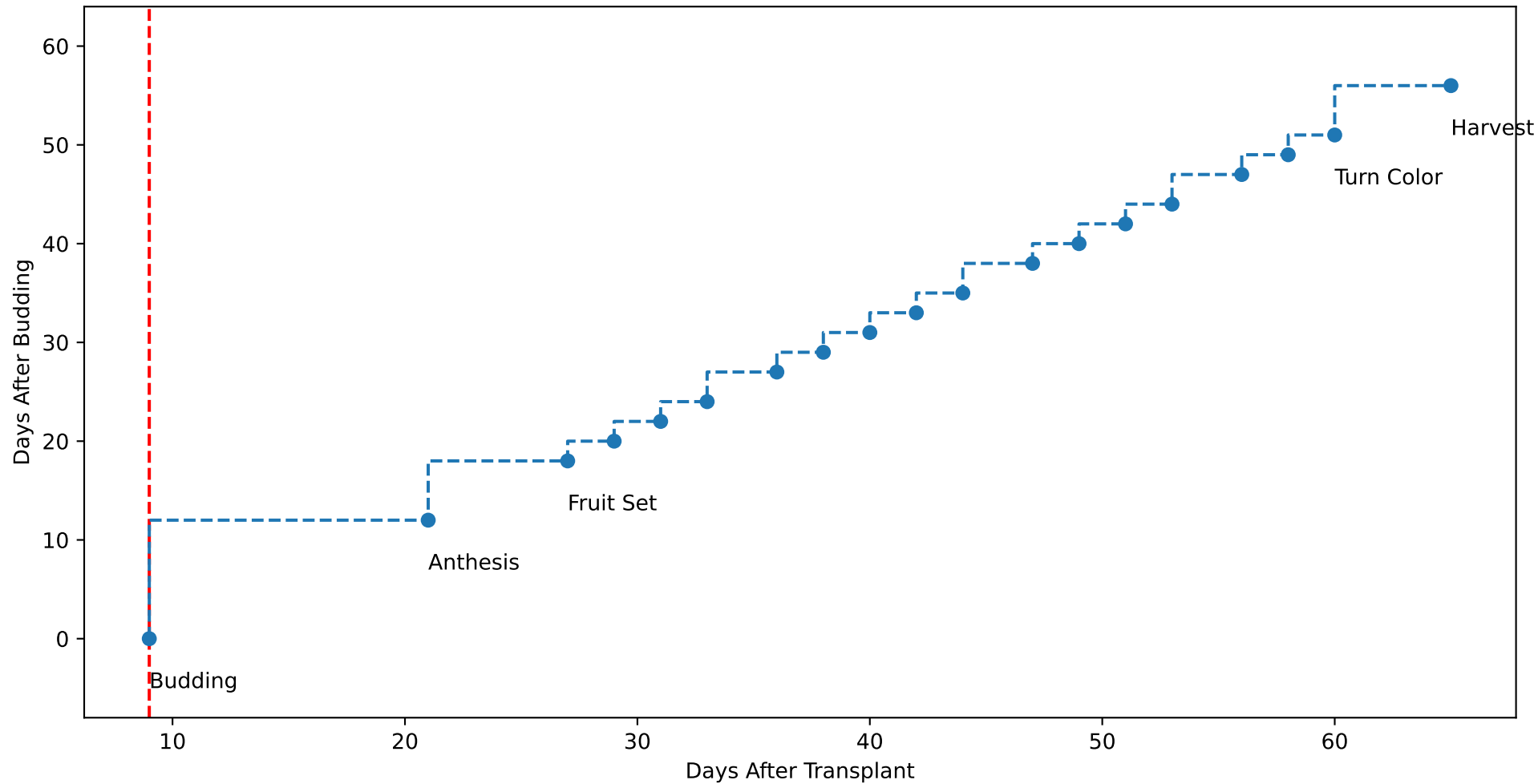
M11: ['LfA', 'peakTgtLAI']



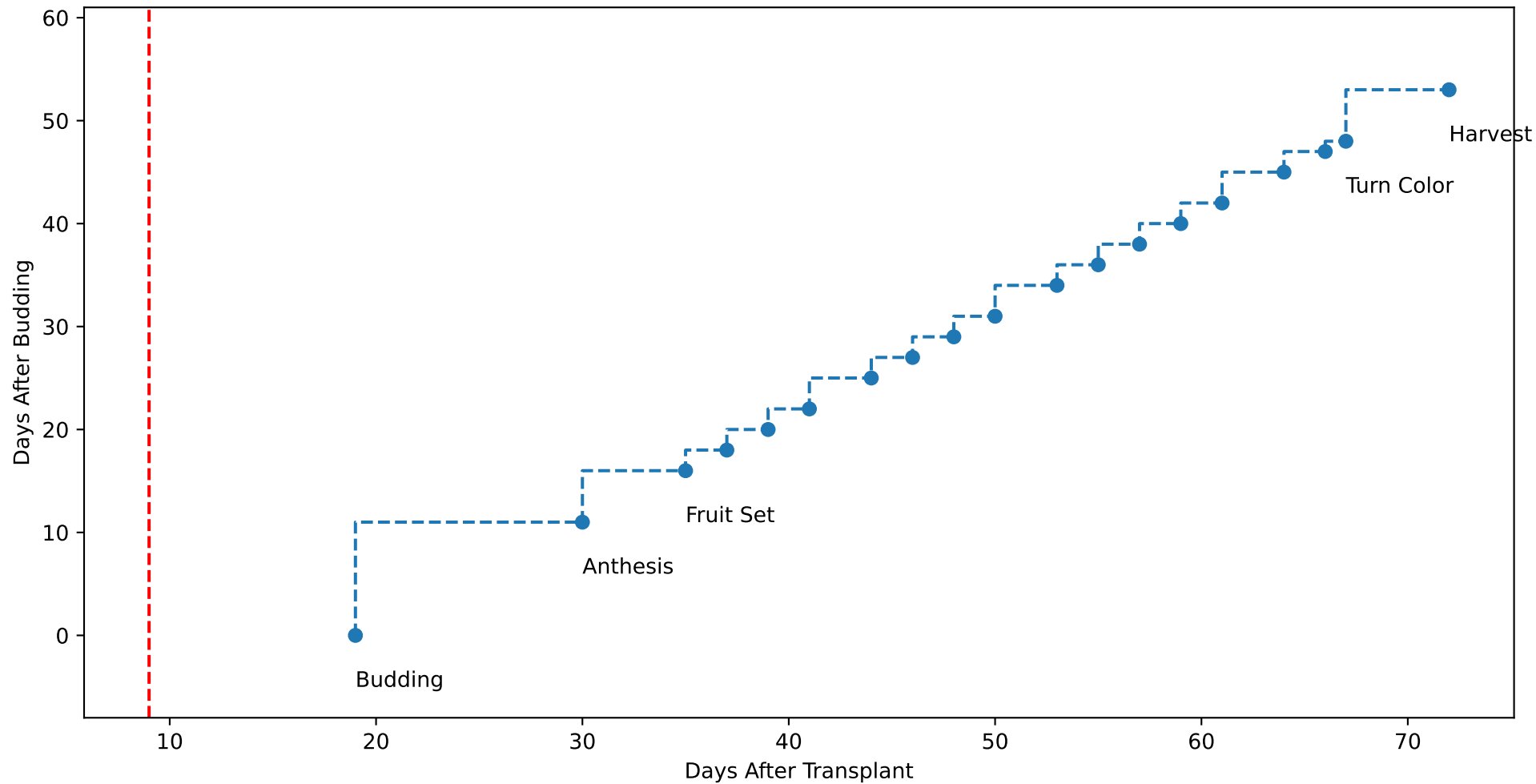
M11 (plot by DAT)



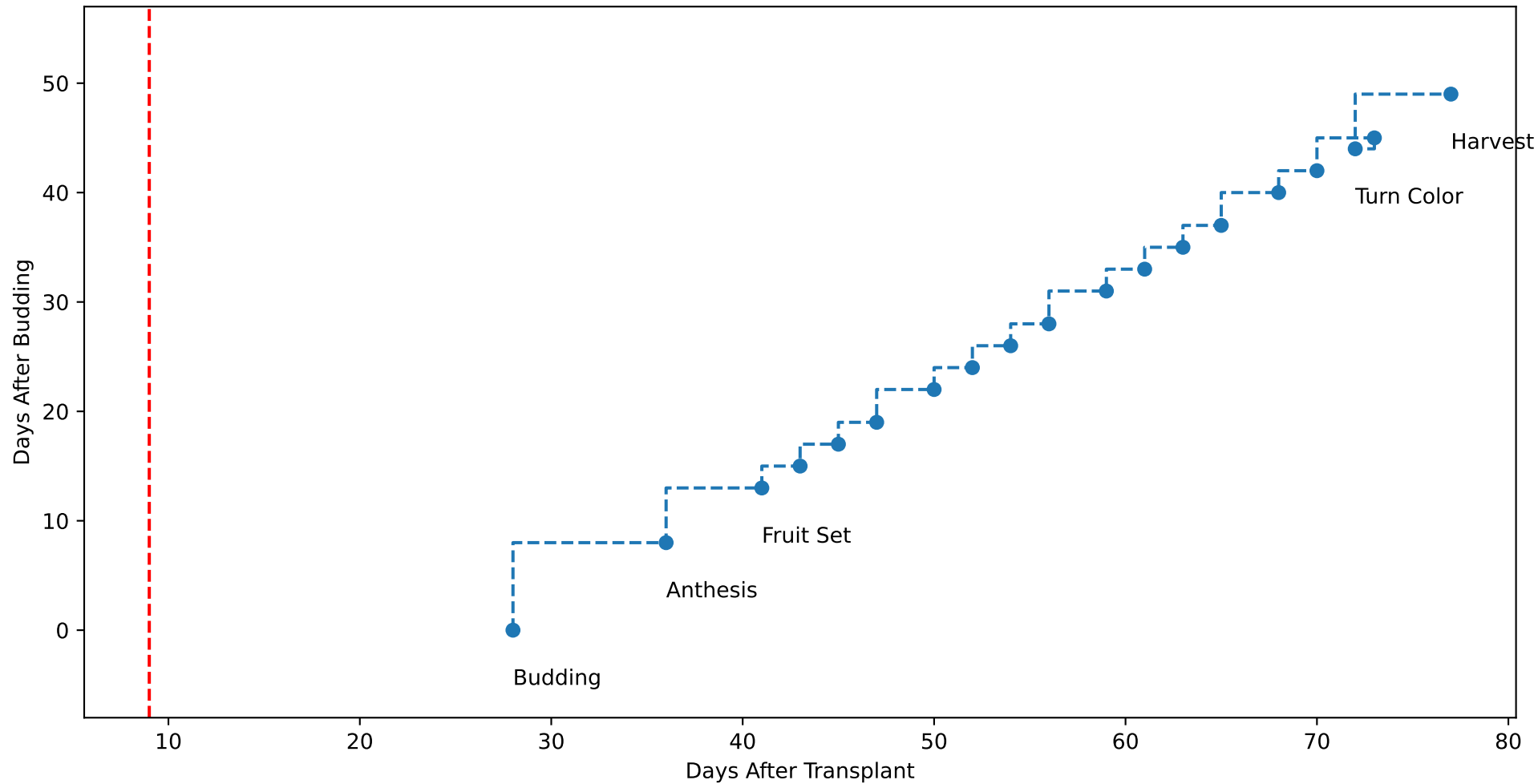
M11 TsN1 (plot by DAT)



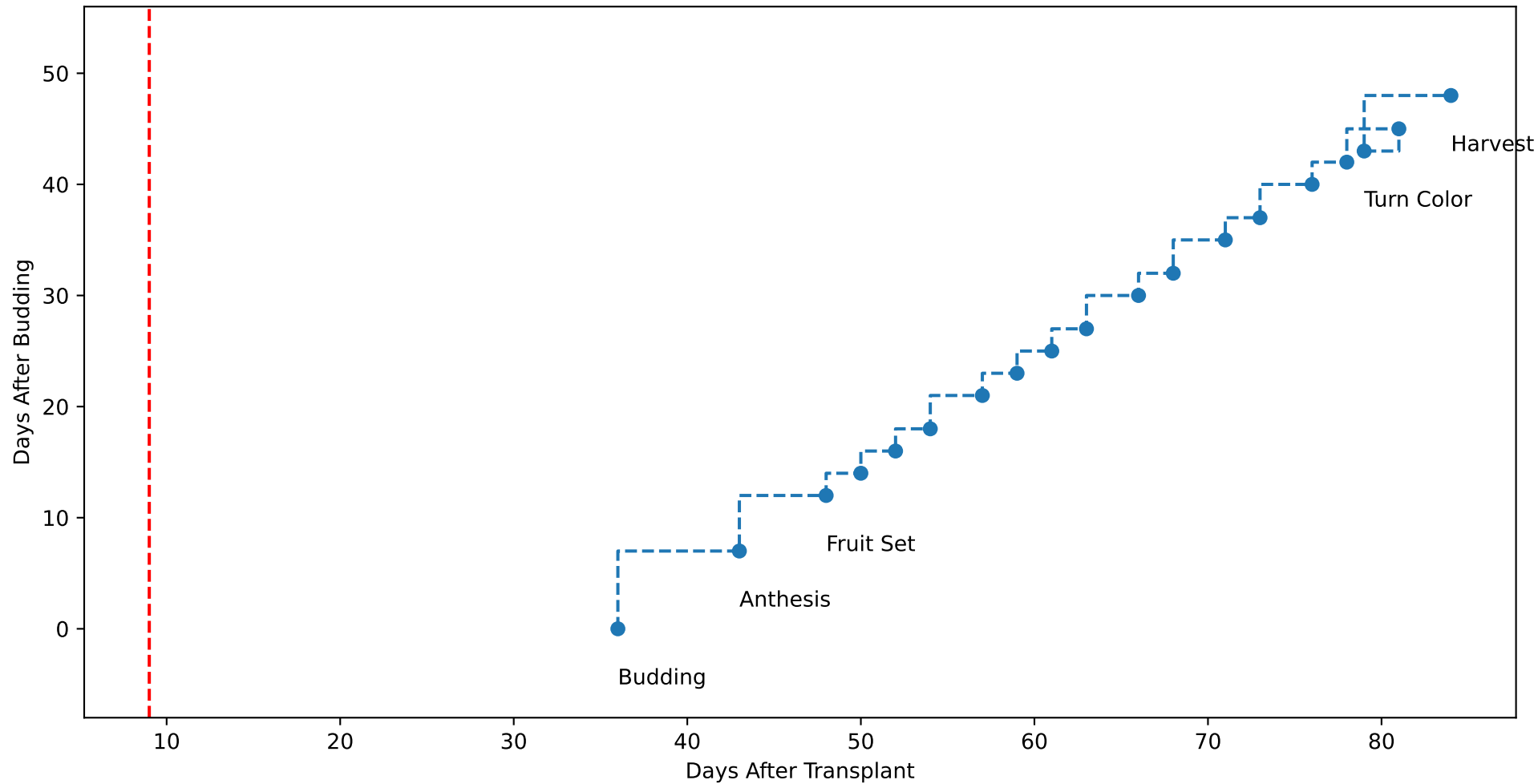
M11 TsN2 (plot by DAT)



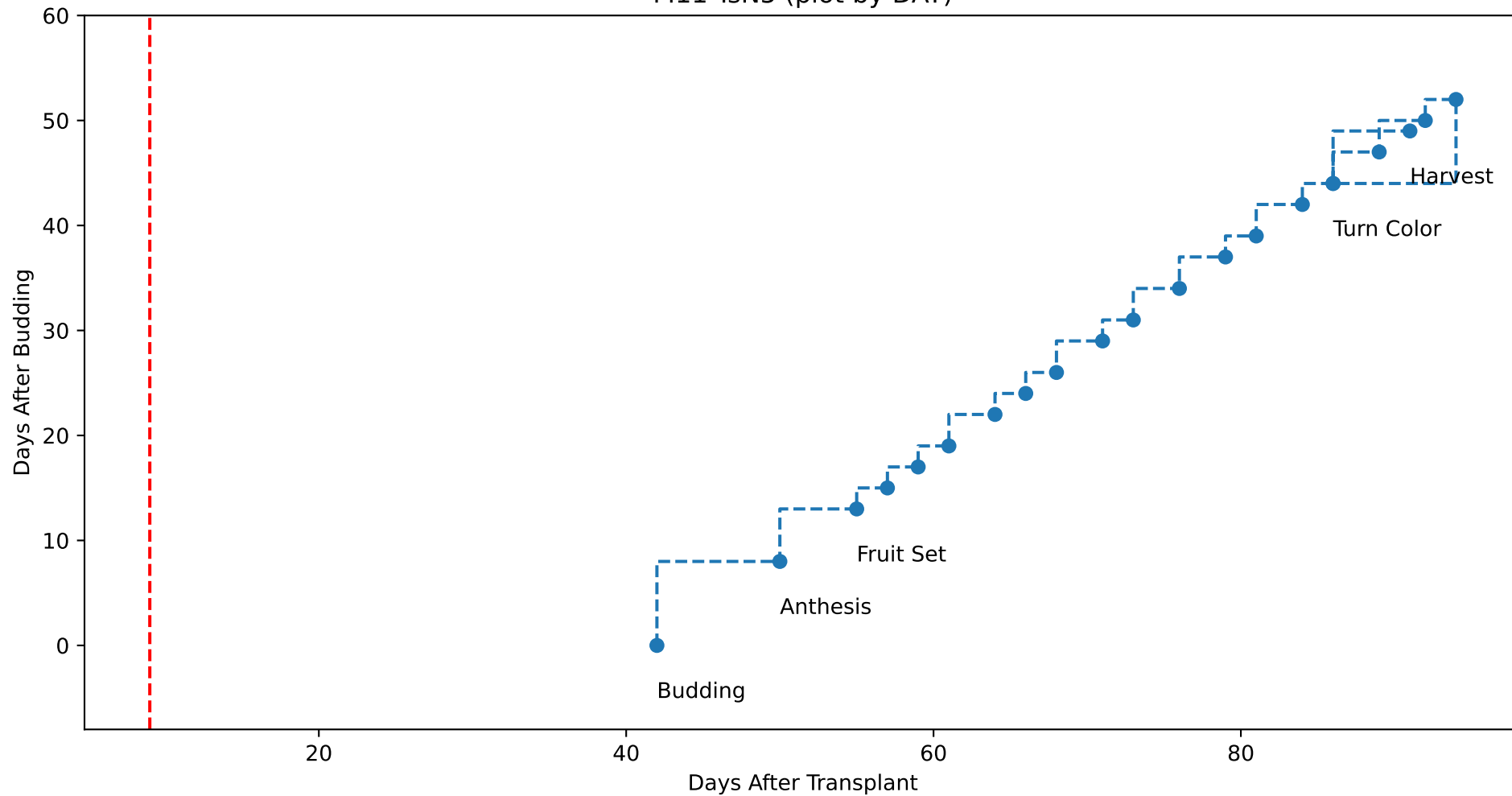
M11 TsN3 (plot by DAT)



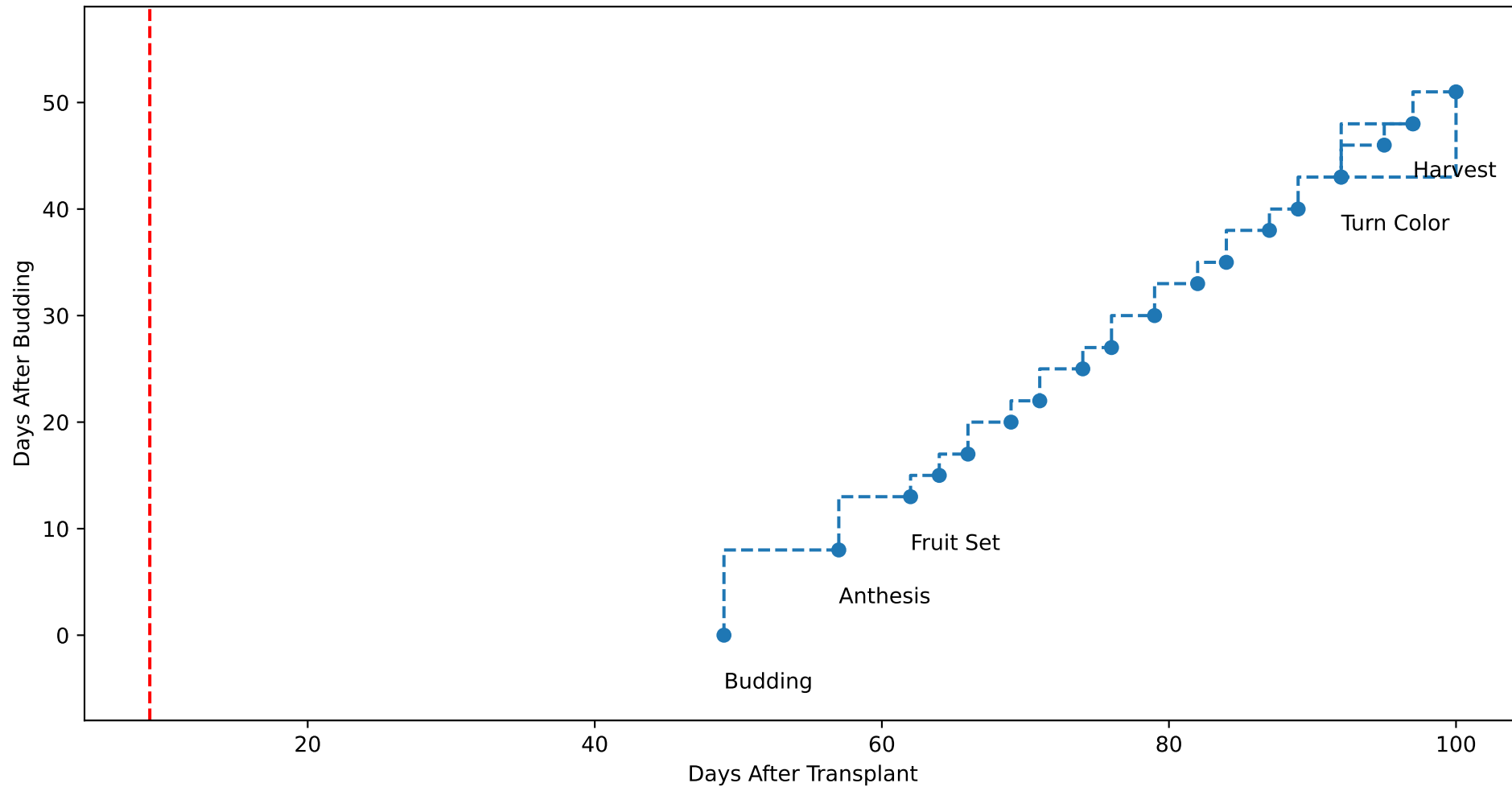
M11 TsN4 (plot by DAT)



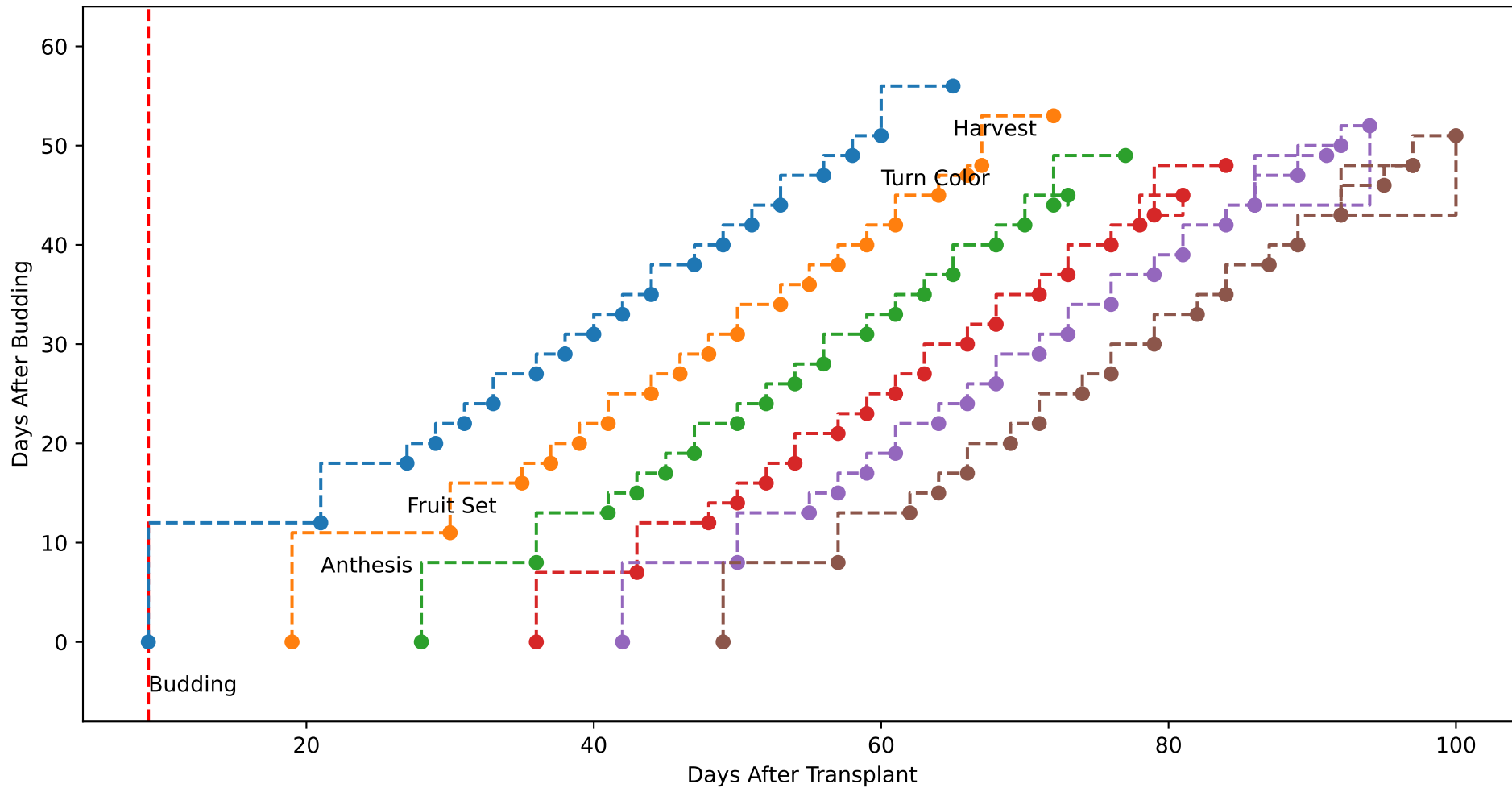
M11 TsN5 (plot by DAT)



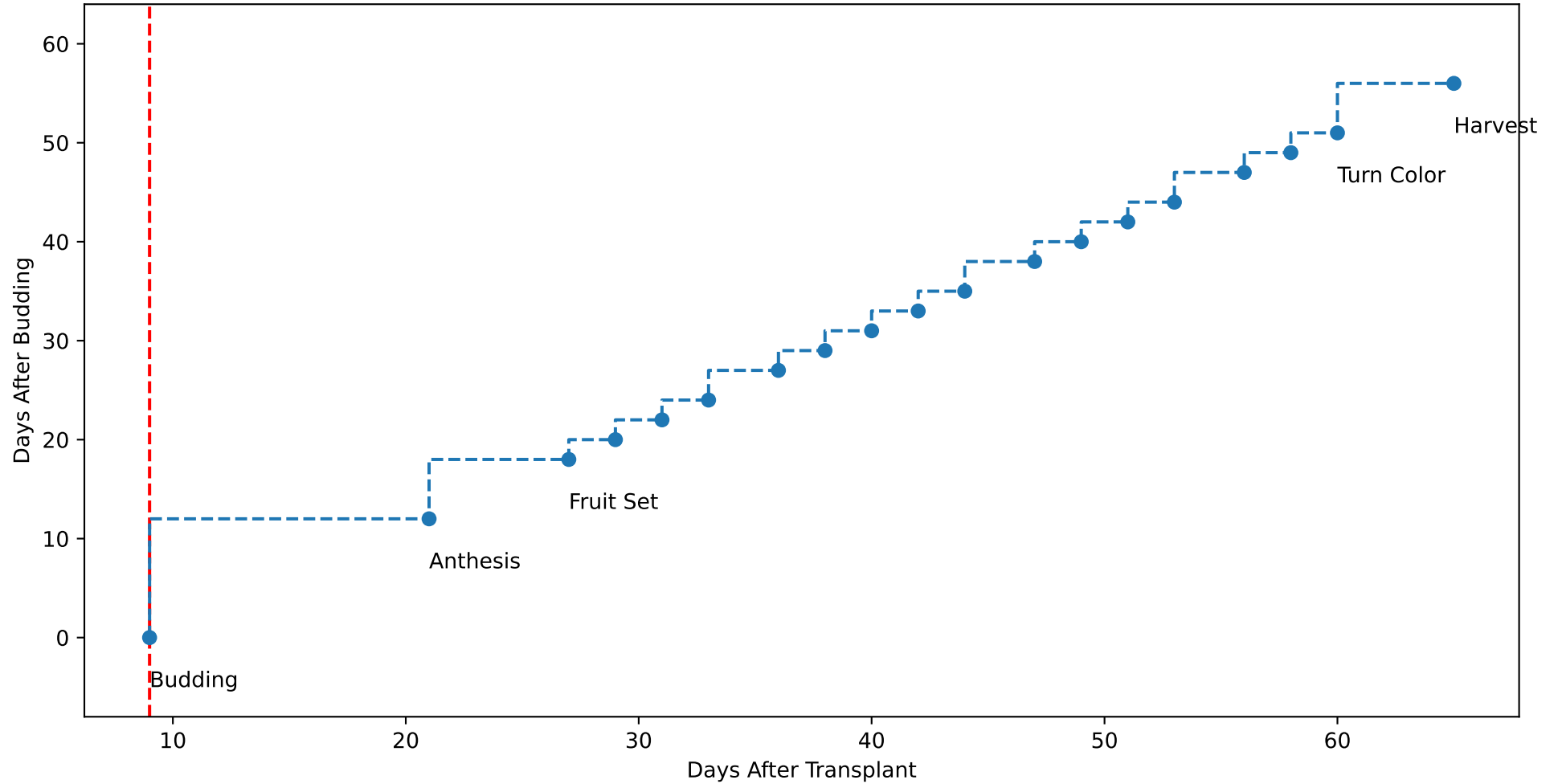
M11 TsN6 (plot by DAT)



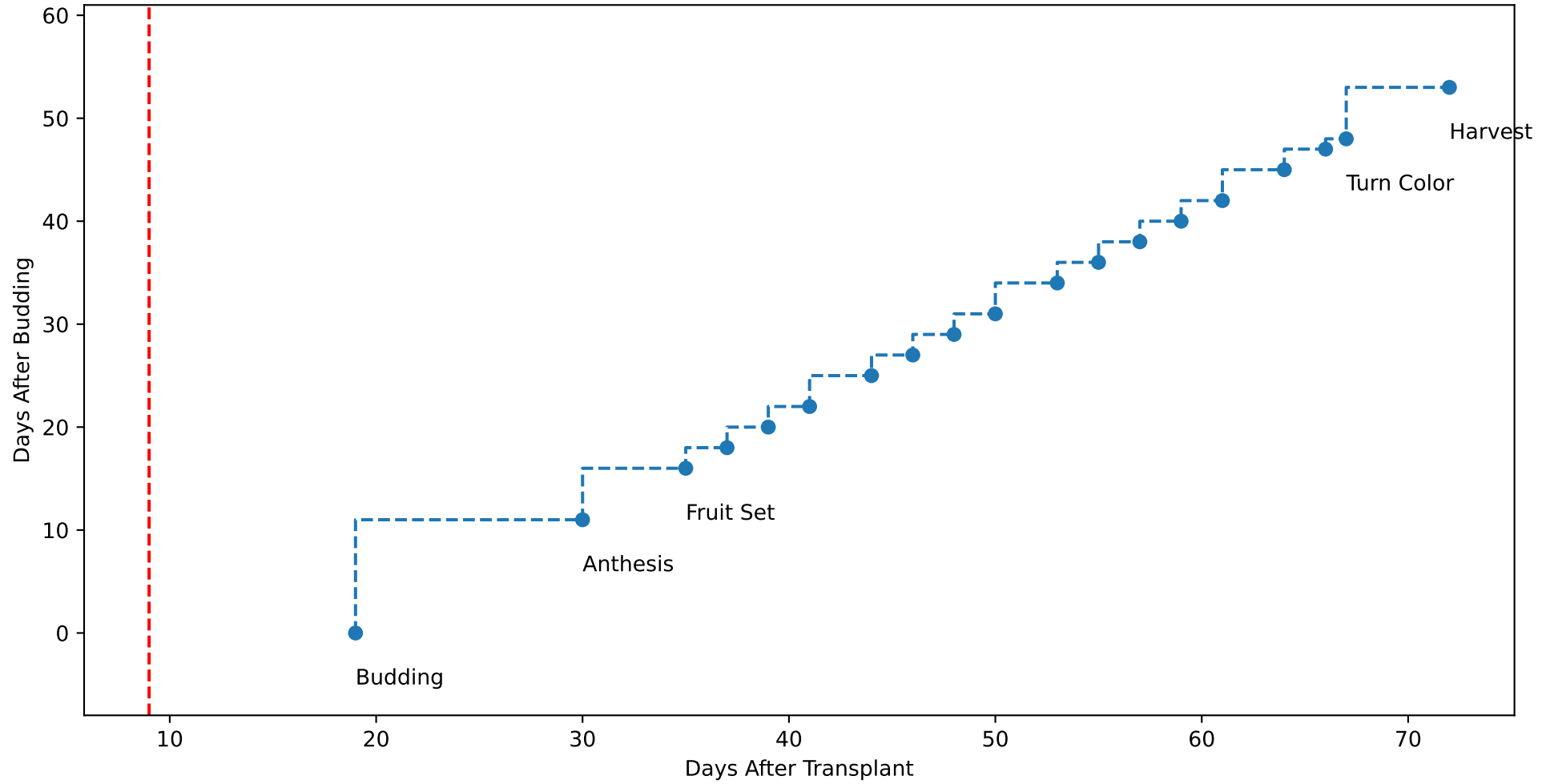
M11 (plot by adjDAT)



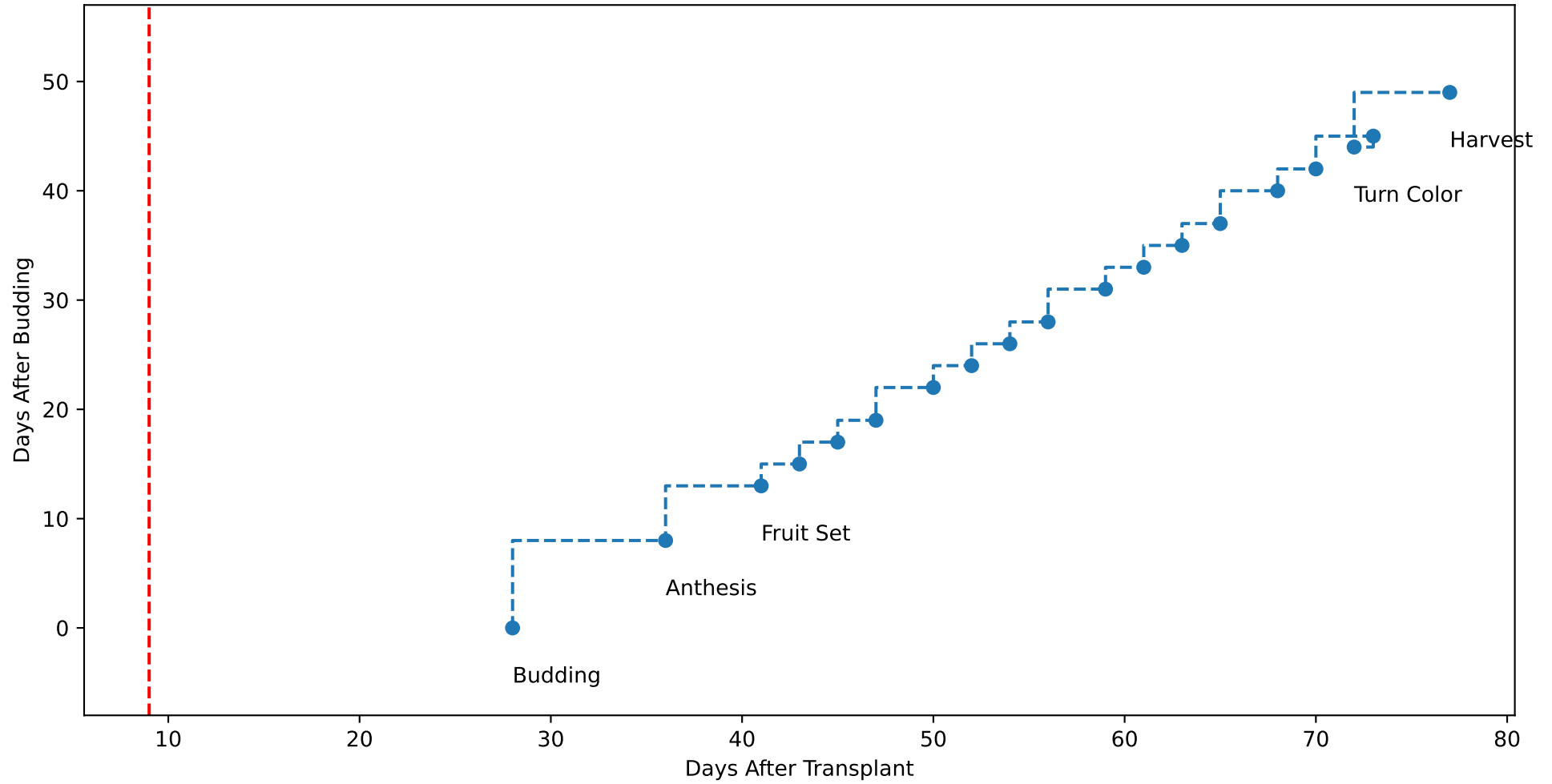
M11 TsN1 (plot by adjDAT)



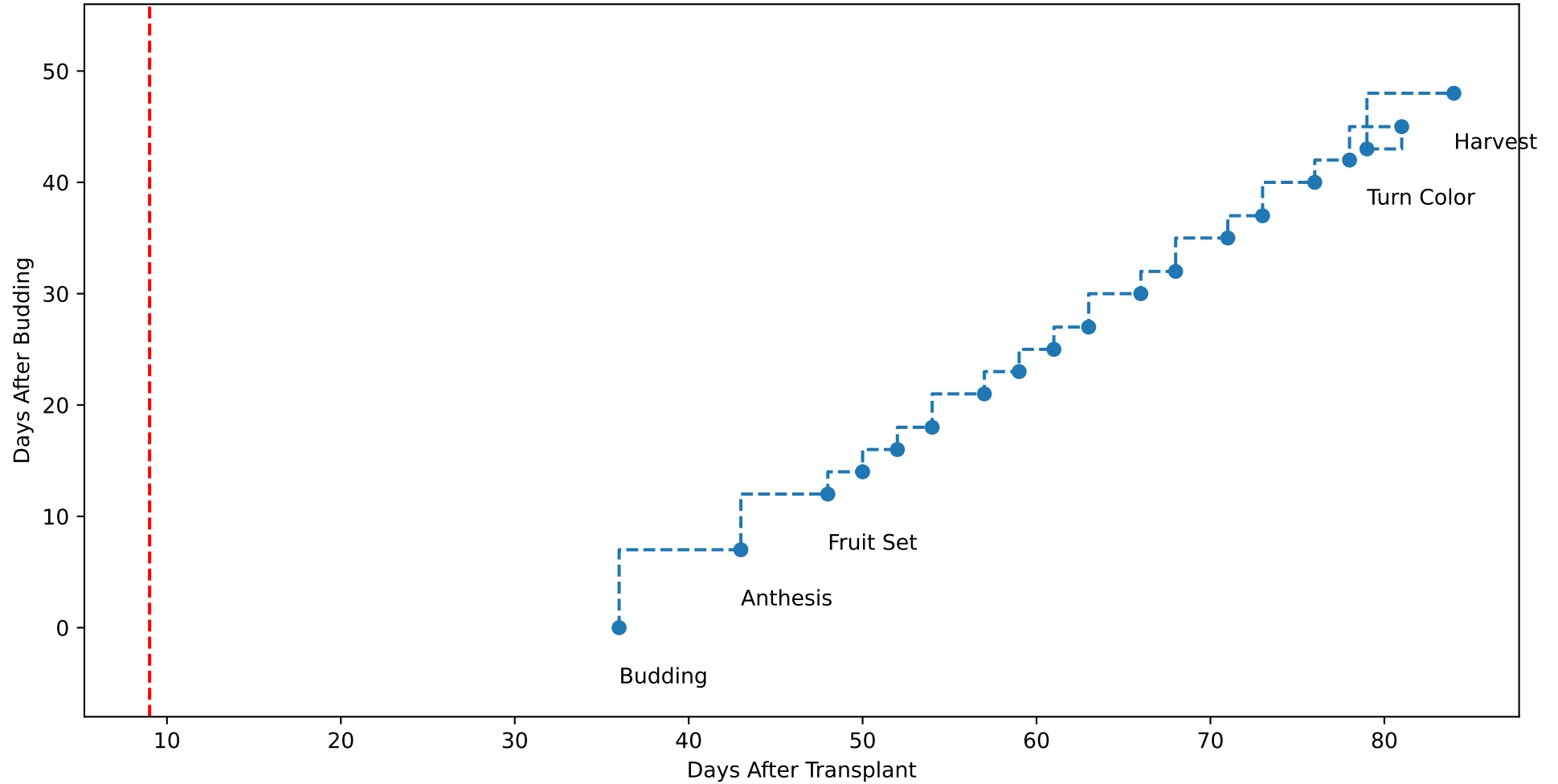
M11 TsN2 (plot by adjDAT)



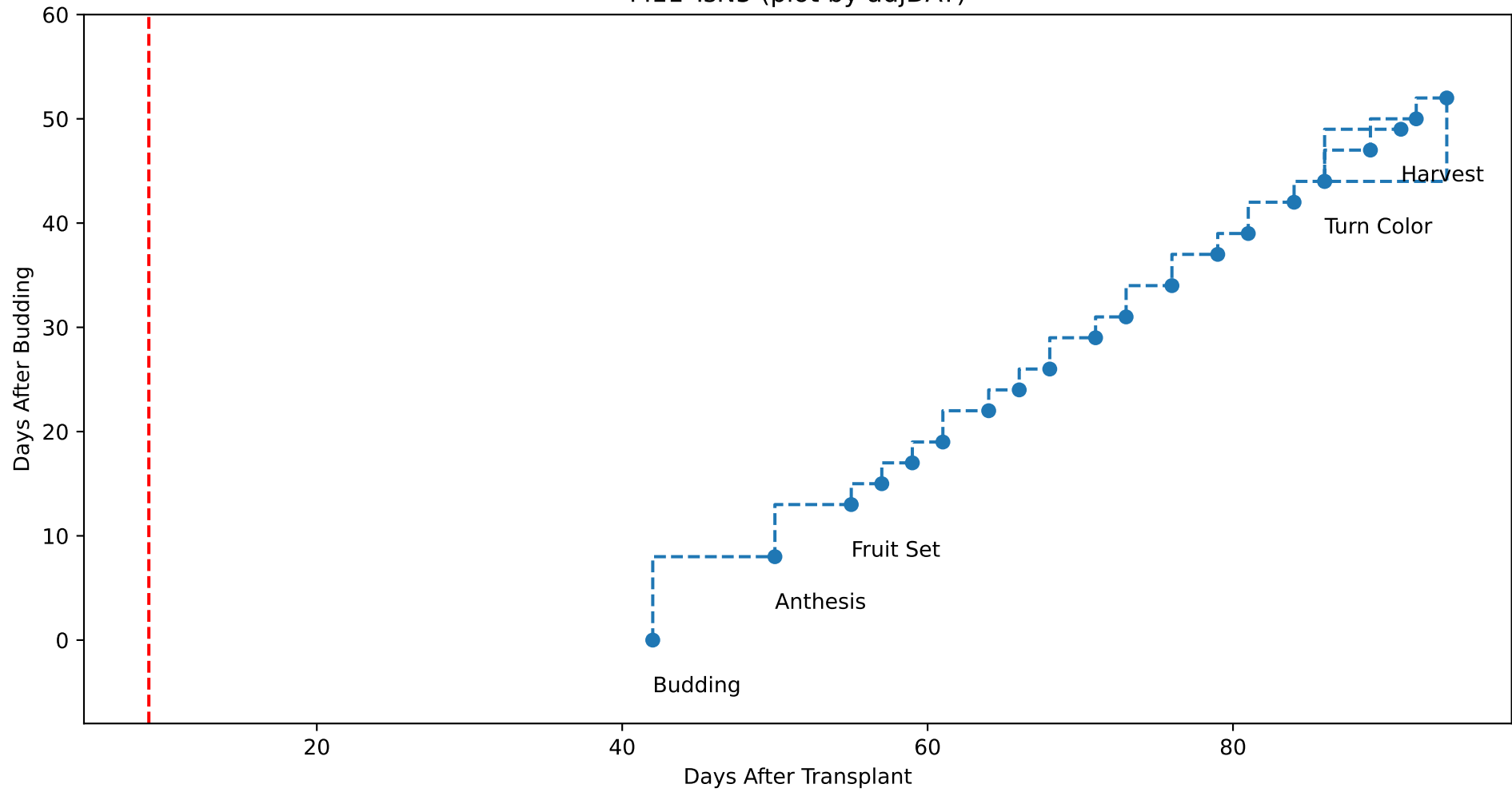
M11 TsN3 (plot by adjDAT)



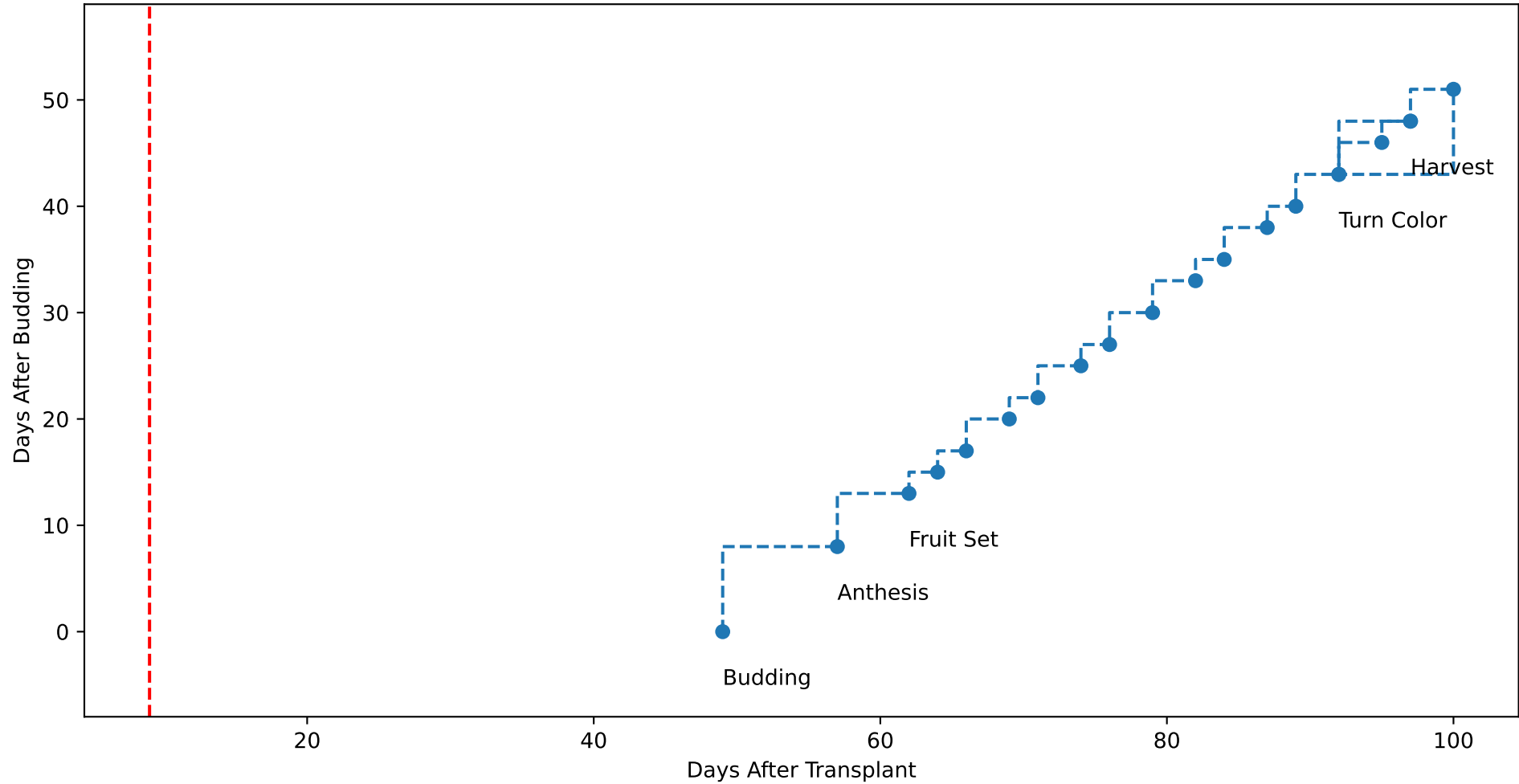
M11 TsN4 (plot by adjDAT)



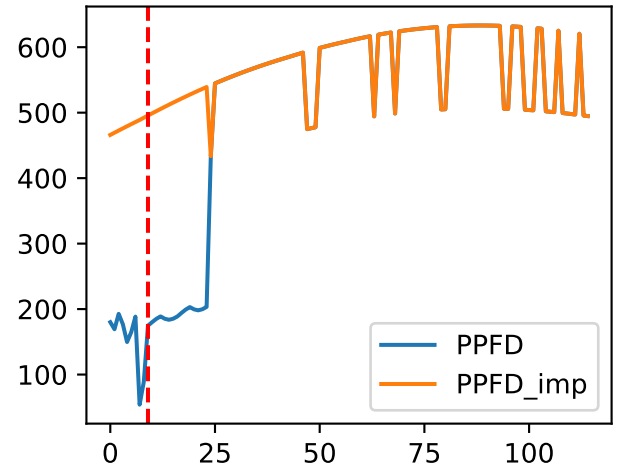
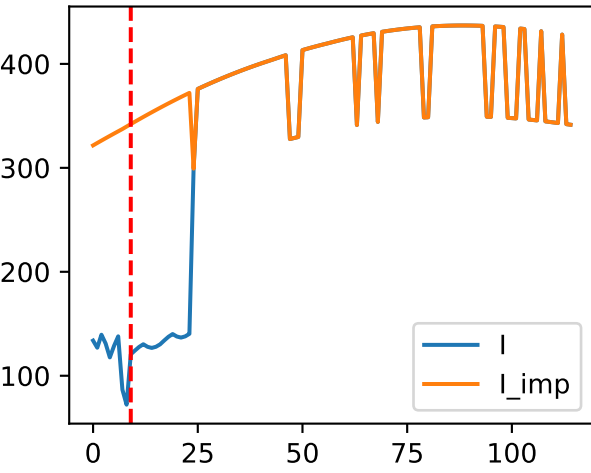
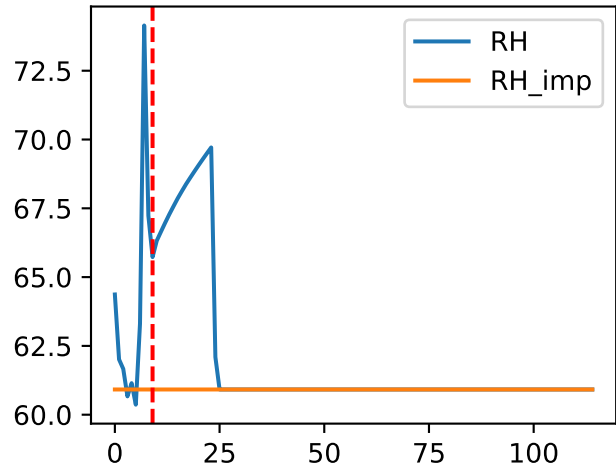
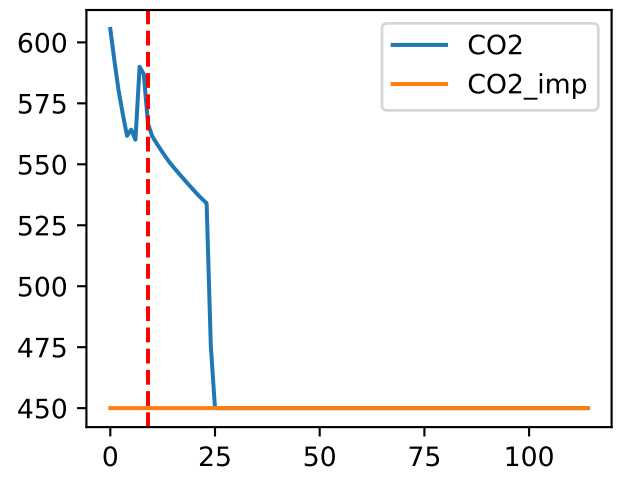
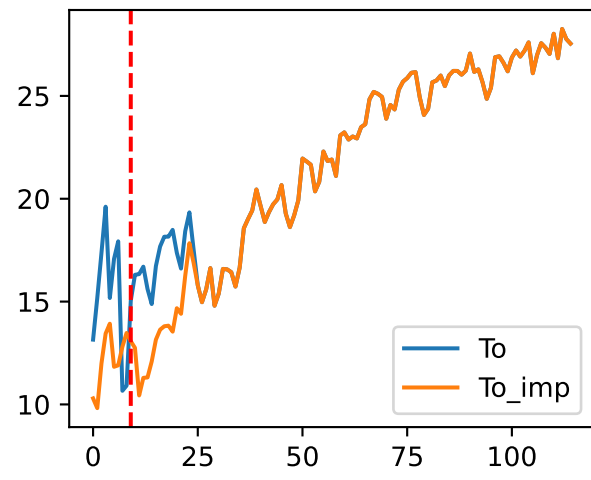
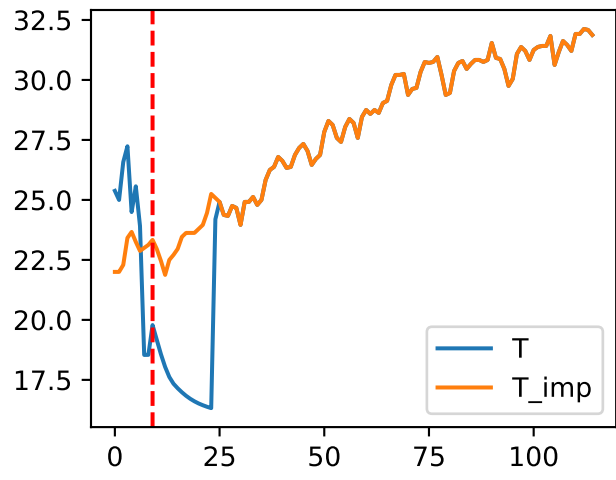
M11 TsN5 (plot by adjDAT)



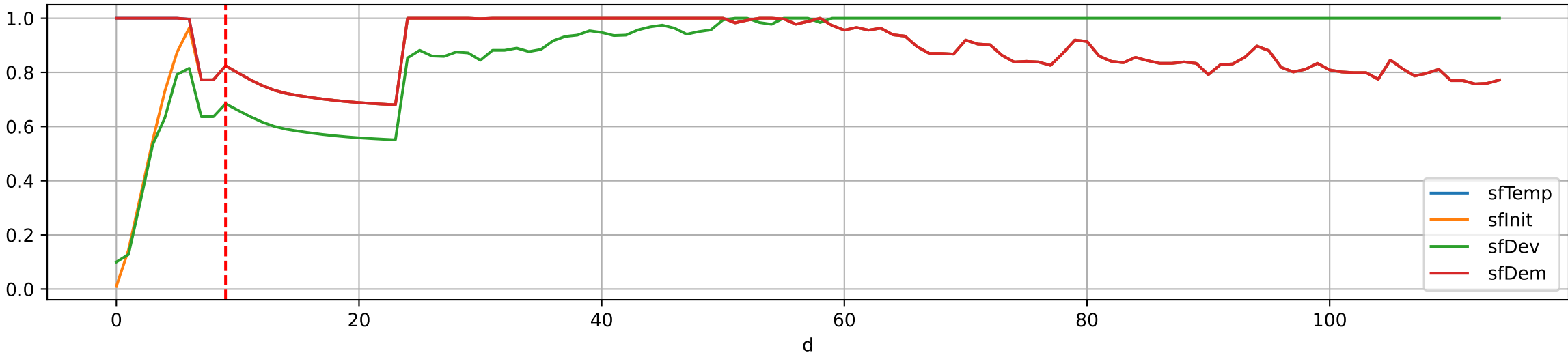
M11 TsN6 (plot by adjDAT)



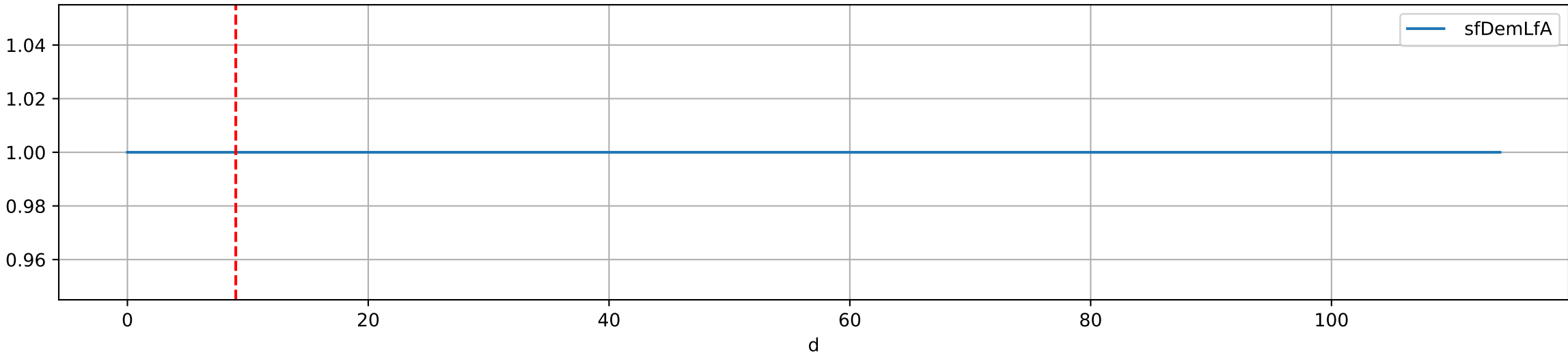
Plot Env Data



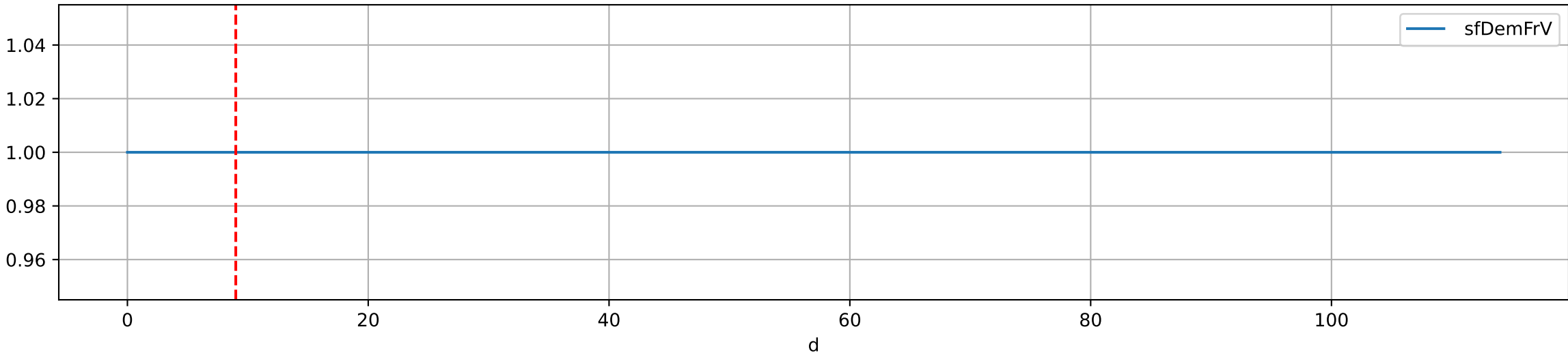
Plot [['sfTemp', 'sfInit', 'sfDev', 'sfDem']]



Plot ['sfDemLfA']



Plot ['sfDemFrV']



Plot EnvOpt Decision

